

Date	1/1/2012	Name	Praveen H.	Mobile	5	Box	John		
Time	Place	1st	2nd	3rd	4th	5th	Ave.	Drilling	Remark
9:00	P1	0.0	0.1	0.2	0.1	0.1	0.1	No	
	P2	0.2	0.4	0.3	0.3	0.2	0.3	No	
	P3	1.8	1.8	1.7	1.6	1.4	1.7	Yes	
	Office	0.0	0.0	0.0	0.0	0.0	0.0	No	
11:00	P1	1.0	1.0	1.2	1.1	1.1	1.1	No	
	P2	1.2	1.0	1.1	1.1	1.0	1.1	Yes	
	P3	2.0	2.1	0.8	1.7	1.6	1.8	Yes	
	Office	0.1	0.1	0.3	0.1	0.1	0.1	No	
14:00	P1	0.1	0.0	0.1	0.2	0.0	0.1	No	
	P2	0.4	0.3	0.5	0.2	0.2	0.3	No	
	P3	1.8	1.8	1.7	1.7	1.5	1.7	Yes	
	Office	0.0	0.2	0.1	0.3	0.1	0.1	No	
17:00	P1	0.1	0.2	0.2	0.3	0.1	0.2	No	
	P2	0.5	0.4	0.6	0.5	0.4	0.5	No	
	P3	0.8	0.7	0.5	0.5	0.4	0.6	No	
	Office	0.1	0.2	0.1	0.1	0.0	0.1	No	

Date	2/1/2012	Name	Praveen H.	Mobile	5	Box	John		
Time	Place	1st	2nd	3rd	4th	5th	Ave.	Drilling	Remark
9:00	P1	0.0	0.1	0.1	0.2	0.3	0.1	No	
	P2	0.1	0.3	0.2	0.1	0.4	0.2	No	
	P3	0.1	0.2	0.3	0.1	0.1	0.1	No	
	Office	0.0	0.0	0.0	0.0	0.0	0.0	No	
11:00	P1	0.1	0.2	0.3	0.1	0.1	0.1	No	
	P2	0.4	0.1	0.2	0.3	0.1	0.2	No	
	P3	0.1	0.4	0.1	0.3	0.2	0.2	No	
	Office	0.0	0.1	0.0	0.0	0.6	0.0	No	
14:00	P1	0.0	0.1	0.2	0.1	0.1	0.1	No	
	P2	0.1	0.1	0.4	0.1	0.3	0.2	No	
	P3	0.5	0.1	0.1	0.2	0.1	0.1	No	
	Office	0.0	0.1	0.1	0.2	0.1	0.1	No	
17:00	P1						0.0	No	
	P2						0.0	No	
	P3						0.0	No	
	Office						0.0	No	

Date	3/1/2012	Name	Praveen H.	Mobile	5	Box	John		
Time	Place	1st	2nd	3rd	4th	5th	Ave.	Drilling	Remark
9:00	P1	0.1	0.1	0.1	0.2	0.1	0.1	No	
	P2	0.1	0.3	0.2	0.2	0.1	0.2	No	
	P3	0.4	0.1	0.3	0.3	0.1	0.2	No	
	Office	0.1	0.2	0.1	0.1	0.1	0.1	No	
11:00	P1	0.1	0.1	0.4	0.1	0.3	0.2	No	
	P2	0.1	0.1	0.1	0.1	0.1	0.1	No	
	P3	0.2	0.1	0.2	0.1	0.1	0.1	No	
	Office	0.0	0.0	0.1	0.3	0.4	0.1	No	
14:00	P1	0.1	0.0	0.1	0.1	0.1	0.1	No	
	P2	0.1	0.2	0.3	0.1	0.1	0.1	No	
	P3	0.1	0.1	0.5	0.4	0.1	0.2	No	
	Office	0.1	0.1	0.1	0.1	0.0	0.1	No	
17:00	P1						0.0	No	
	P2						0.0	No	
	P3						0.0	No	
	Office						0.0	No	

Date	4/1/2012	Name	Praveen H.	Mobile	5	Box	John
------	----------	------	------------	--------	---	-----	------

Time	Place	1st	2nd	3rd	4th	5th	Ave.	Drilling	Remark
9:00	P1	0.0	0.1	0.1	0.2	0.1	0.1	No	
	P2	0.1	0.2	0.1	0.1	0.1	0.1	No	
	P3	0.1	0.2	0.1	0.1	0.1	0.1	No	
	Office	0.0	0.0	0.0	0.0	0.0	0.0	No	
11:00	P1	0.1	0.2	0.1	0.1	0.1	0.1	No	
	P2	0.1	0.1	0.3	0.1	0.1	0.1	No	
	P3	1.2	1.4	1.0	1.6	1.4	1.3	Yes	
	Office	0.1	0.0	0.1	0.1	0.0	0.1	No	
14:00	P1	0.1	0.1	0.1	0.1	0.2	0.1	No	
	P2	0.1	0.1	0.1	0.4	0.3	0.2	No	
	P3	0.1	0.4	0.3	0.1	0.0	0.2	No	
	Office	0.1	0.3	0.5	0.1	0.1	0.2	No	
17:00	P1	0.1	0.2	0.1	0.1	0.2	0.1	No	
	P2	0.1	0.2	0.1	0.1	0.2	0.1	No	
	P3	0.4	0.1	0.4	0.3	0.1	0.3	No	
	Office	0.0	0.1	0.1	0.0	0.0	0.0	No	

Date	5/1/2012		Name	Praveen H.		Mobile	5	Box	John
Time	Place	1st	2nd	3rd	4th	5th	Ave.	Drilling	Remark
9:00	P1	0.0	0.1	0.0	0.0	0.1	0.0	No	
	P2	0.1	0.2	0.3	0.1	0.1	0.1	No	
	P3	4.2	3.5	5.5	1.9	2.7	3.5	Yes	
	Office	0.0	0.0	0.1	0.0	0.1	0.0	No	
11:00	P1	0.1	0.0	0.1	0.1	0.1	0.1	No	
	P2	0.2	0.4	0.1	0.3	0.1	0.2	No	
	P3	3.3	2.3	2.6	3.3	4.1	3.1	Yes	
	Office	0.1	0.1	0.3	0.2	0.1	0.1	No	
14:00	P1	0.0	0.0	0.1	0.2	0.1	0.1	No	
	P2	0.1	0.1	0.2	0.1	0.1	0.1	No	
	P3	3.3	1.9	3.1	3.1	2.3	2.8	Yes	
	Office	0.0	0.0	0.0	0.0	0.1	0.0	No	
17:00	P1	0.1	0.2	0.1	0.1	0.3	0.1	No	
	P2	0.2	0.1	0.1	0.1	0.1	0.1	Yes	
	P3	0.2	2.9	3.9	2.8	1.6	2.4	Yes	
	Office	0.0	0.1	0.1	0.0	0.1	0.1	No	

Date	6/1/2012		Name	Praveen H.		Mobile	5	Box	John
Time	Place	1st	2nd	3rd	4th	5th	Ave.	Drilling	Remark
9:00	P1	0.1	0.1	0.0	0.1	0.0	0.1	No	
	P2	0.1	0.0	0.0	0.1	0.2	0.1	No	
	P3	0.1	0.1	0.1	0.0	0.1	0.1	No	
	Office	0.0	0.1	0.0	0.1	0.1	0.1	No	
11:00	P1	0.1	0.0	0.0	0.1	0.0	0.0	No	
	P2	1.4	1.8	2.7	1.6	2.3	1.9	No	
	P3	2.7	2.9	2.8	2.3	2.6	2.7	Yes	
	Office	0.0	0.1	0.1	0.0	0.0	0.0	No	
14:00	P1	0.1	0.0	0.0	0.1	0.1	0.1	No	
	P2	0.1	0.0	0.2	0.0	0.1	0.1	No	
	P3	0.2	0.0	0.0	0.0	0.1	0.0	No	
	Office	0.1	0.1	0.1	0.1	0.1	0.1	No	
17:00	P1						0.0	No	
	P2						0.0	No	
	P3						0.0	No	
	Office						0.0	No	

Date	7/1/2012		Name	Praveen H.		Mobile	5	Box	John
Time	Place	1st	2nd	3rd	4th	5th	Ave.	Drilling	Remark
	P1	0.0	0.1	0.1	0.1	0.0	0.1	No	

9:00	P2	0.0	0.1	0.1	0.1	0.1	0.1	No	
	P3	0.1	0.0	0.1	0.1	0.0	0.1	No	
	Office	0.0	0.1	0.1	0.1	0.0	0.1	No	
11:00	P1	0.1	0.2	0.1	0.1	0.1	0.1	No	
	P2	0.1	0.1	0.0	0.0	0.0	0.0	No	
	P3	0.1	0.1	0.1	0.0	0.1	0.1	No	
	Office	0.0	0.0	0.1	0.0	0.1	0.0	No	
14:00	P1	0.1	0.0	0.1	0.2	0.1	0.1	No	
	P2	1.7	1.8	1.7	1.5	1.6	1.7	Yes	
	P3	0.1	0.3	0.1	0.2	0.1	0.1	No	
	Office	0.0	0.1	0.1	0.1	0.2	0.1	No	
17:00	P1						0.0	No	
	P2						0.0	No	
	P3						0.0	No	
	Office						0.0	No	

Date	8/1/2012	Name	Praveen H.	Mobile	5	Box	John		
Time	Place	1st	2nd	3rd	4th	5th	Ave.	Drilling	Remark
9:00	P1	0.0	0.1	0.1	0.1	0.1	0.1	No	
	P2	0.1	0.2	0.1	0.1	0.0	0.1	No	
	P3	0.2	0.1	0.1	0.1	0.0	0.1	No	
	Office	0.1	0.1	0.0	0.0	0.1	0.1	No	
11:00	P1	0.0	0.1	0.2	0.2	0.2	0.2	No	
	P2	0.1	0.4	0.1	0.1	0.1	0.1	No	
	P3	0.1	0.1	0.3	0.1	0.2	0.1	No	
	Office	0.0	0.1	0.1	0.1	0.1	0.1	No	
14:00	P1	0.0	0.3	0.2	0.1	0.1	0.1	No	
	P2	0.1	0.1	0.1	0.1	0.2	0.1	No	
	P3	0.1	0.2	0.1	0.1	0.3	0.1	No	
	Office	0.0	0.0	0.1	0.2	0.1	0.1	No	
17:00	P1						0.0	No	
	P2						0.0	No	
	P3						0.0	No	
	Office						0.0	No	

Date	9/1/2012	Name	Praveen H.	Mobile	5	Box	John		
Time	Place	1st	2nd	3rd	4th	5th	Ave.	Drilling	Remark
9:00	P1	0.1	0.1	0.2	0.1	0.1	0.1	No	
	P2	0.1	0.1	0.1	0.3	0.2	0.1	No	
	P3	0.1	0.1	0.1	0.3	0.1	0.1	No	
	Office	0.1	0.1	0.1	0.1	0.1	0.1	No	
11:00	P1	0.1	0.0	0.1	0.1	0.1	0.1	No	
	P2	0.1	0.1	0.2	0.1	0.0	0.1	No	
	P3	0.1	0.1	0.0	0.1	0.1	0.1	No	
	Office	0.1	0.1	0.1	0.2	0.1	0.1	No	
14:00	P1	0.1	0.2	0.1	0.3	0.1	0.1	No	
	P2	0.1	0.1	0.2	0.1	0.1	0.1	No	
	P3	0.1	0.2	0.1	0.3	0.1	0.1	No	
	Office	0.1	0.1	0.1	0.2	0.1	0.1	No	
17:00	P1						0.0	No	
	P2						0.0	No	
	P3						0.0	No	
	Office						0.0	No	

Date	10/1/2012	Name	Praveen H.	Mobile	5	Box	John		
Time	Place	1st	2nd	3rd	4th	5th	Ave.	Drilling	Remark
9:00	P1	0.1	0.2	0.1	0.4	0.1	0.1	No	
	P2	0.1	0.1	0.1	0.6	0.1	0.1	No	
	P3	0.2	0.1	0.1	0.1	0.4	0.1	No	

11:00	Office	0.0	0.1	0.0	0.1	0.0	0.0	No	
	P1	0.1	0.2	0.1	0.0	0.1	0.1	No	
	P2	1.2	1.6	1.7	1.5	1.2	1.4	Yes	
	P3	0.1	0.1	0.5	0.1	0.3	0.2	No	
14:00	Office	0.1	0.2	0.1	0.1	0.1	0.1	No	
	P1	0.1	0.1	0.4	0.2	0.3	0.2	No	
	P2	0.5	0.1	0.5	0.1	0.1	0.2	Yes	
	P3	2.0	2.8	2.1	1.2	1.6	1.9	Yes	
17:00	Office	0.0	0.1	0.0	0.1	0.0	0.0	No	
	P1						0.0	No	
	P2						0.0	No	
	P3						0.0	No	
	Office						0.0	No	

Date	11/1/2012	Name	Praveen H.	Mobile	5	Box	John		
Time	Place	1st	2nd	3rd	4th	5th	Ave.	Drilling	Remark
9:00	P1	0.1	0.2	0.1	0.2	0.1	0.1	No	
	P2	0.1	0.2	0.1	0.2	0.1	0.1	No	
	P3	1.9	1.8	2.2	1.6	2.3	2.0	Yes	
	Office	0.0	0.1	0.1	0.2	0.0	0.1	No	
11:00	P1	0.1	0.1	0.2	0.6	0.1	0.1	No	
	P2	0.1	0.2	0.1	0.1	0.2	0.1	No	
	P3	1.2	1.3	0.4	0.0	1.4	1.0	No	
	Office	0.1	0.1	0.0	0.0	0.0	0.0	No	
14:00	P1	0.1	0.0	0.1	0.2	0.3	0.1	No	
	P2	0.1	0.1	0.1	0.1	0.1	0.1	No	
	P3	0.2	0.0	0.4	0.1	0.1	0.1	No	
	Office	0.0	0.1	0.1	0.5	0.0	0.1	No	
17:00	P1						0.0	No	
	P2						0.0	No	
	P3						0.0	No	
	Office						0.0	No	

Date	12/1/2012	Name	Praveen H.	Mobile	5	Box	John		
Time	Place	1st	2nd	3rd	4th	5th	Ave.	Drilling	Remark
9:00	P1	0.0	0.4	0.2	0.9	0.9	0.5	No	
	P2	1.2	1.8	1.8	0.9	1.1	1.4	No	
	P3	0.2	0.6	0.9	0.4	0.6	0.5	No	
	Office	0.0	0.1	0.0	0.3	0.0	0.0	No	
11:00	P1	1.1	2.8	1.7	0.9	1.2	1.3	No	
	P2	2.3	2.2	1.5	2.4	1.6	2.0	Yes	
	P3	0.1	0.9	0.2	0.8	0.6	0.5	No	
	Office	0.2	0.1	0.6	0.1	0.6	0.3	No	
14:00	P1	0.1	0.2	0.1	0.4	0.6	0.2	No	
	P2	0.2	0.3	0.1	0.5	0.1	0.2	No	
	P3	0.2	0.1	0.2	0.1	0.1	0.1	No	
	Office	0.0	0.1	0.1	0.2	0.1	0.1	No	
17:00	P1	1.1	1.8	1.2	1.2	1.2	1.2	No	
	P2	1.2	2.2	1.5	2.4	0.6	1.6	No	
	P3	0.1	0.1	0.4	0.5	0.9	0.3	No	
	Office	0.0	0.2	0.1	0.1	0.1	0.1	No	

Date	13/1/2012	Name	Praveen H.	Mobile	5	Box	John		
Time	Place	1st	2nd	3rd	4th	5th	Ave.	Drilling	Remark
9:00	P1	0.1	0.2	0.1	0.1	0.6	0.1	No	
	P2	0.0	0.3	0.1	0.5	0.1	0.2	No	
	P3	0.1	0.3	0.6	0.1	0.5	0.3	No	
	Office	0.1	0.1	0.3	0.0	0.5	0.2	No	
	P1	1.1	1.5	1.3	1.2	1.5	1.3	No	

11:00	P2	2.1	2.8	2.1	1.9	1.8	2.0	No	
	P3	0.1	0.5	0.3	0.1	0.1	0.2	No	
	Office	0.0	0.1	0.5	0.1	0.2	0.1	No	
14:00	P1	0.1	0.3	0.3	0.7	0.1	0.2	No	
	P2	0.5	0.5	0.6	0.1	0.3	0.4	No	
	P3	0.3	0.1	0.0	0.9	0.5	0.3	No	
17:00	Office	0.0	0.1	0.3	0.1	0.5	0.2	No	
	P1						0.0	No	
	P2						0.0	No	
	P3						0.0	No	
Office						0.0	No		

Date	14/1/2012	Name	Praveen H.	Mobile	5	Box	John		
Time	Place	1st	2nd	3rd	4th	5th	Ave.	Drilling	Remark
9:00	P1	0.2	0.0	0.0	0.3	0.3	0.2	No	
	P2	0.0	0.0	0.6	0.0	0.0	0.0	No	
	P3	0.0	0.0	0.0	0.1	0.0	0.0	No	
	Office	0.0	0.0	0.0	0.0	0.0	0.0	No	
11:00	P1	0.1	0.0	0.5	0.3	0.1	0.2	No	
	P2	0.2	0.1	0.4	0.3	0.1	0.2	No	
	P3	0.1	0.1	0.0	0.1	0.2	0.1	No	
	Office	0.1	0.1	0.1	0.0	0.0	0.1	No	
14:00	P1	0.1	0.0	0.1	0.1	0.0	0.1	No	
	P2	0.0	0.0	0.5	0.1	0.0	0.0	No	
	P3	0.1	0.3	0.1	0.6	0.1	0.2	No	
	Office	0.0	0.1	0.5	0.0	0.5	0.2	No	
17:00	P1	0.0	0.1	0.1	0.5	0.0	0.1	No	
	P2	0.1	0.1	0.3	0.4	0.5	0.3	No	
	P3	0.1	0.0	0.1	0.5	0.1	0.1	No	
	Office	0.1	0.5	0.1	0.1	0.1	0.1	No	

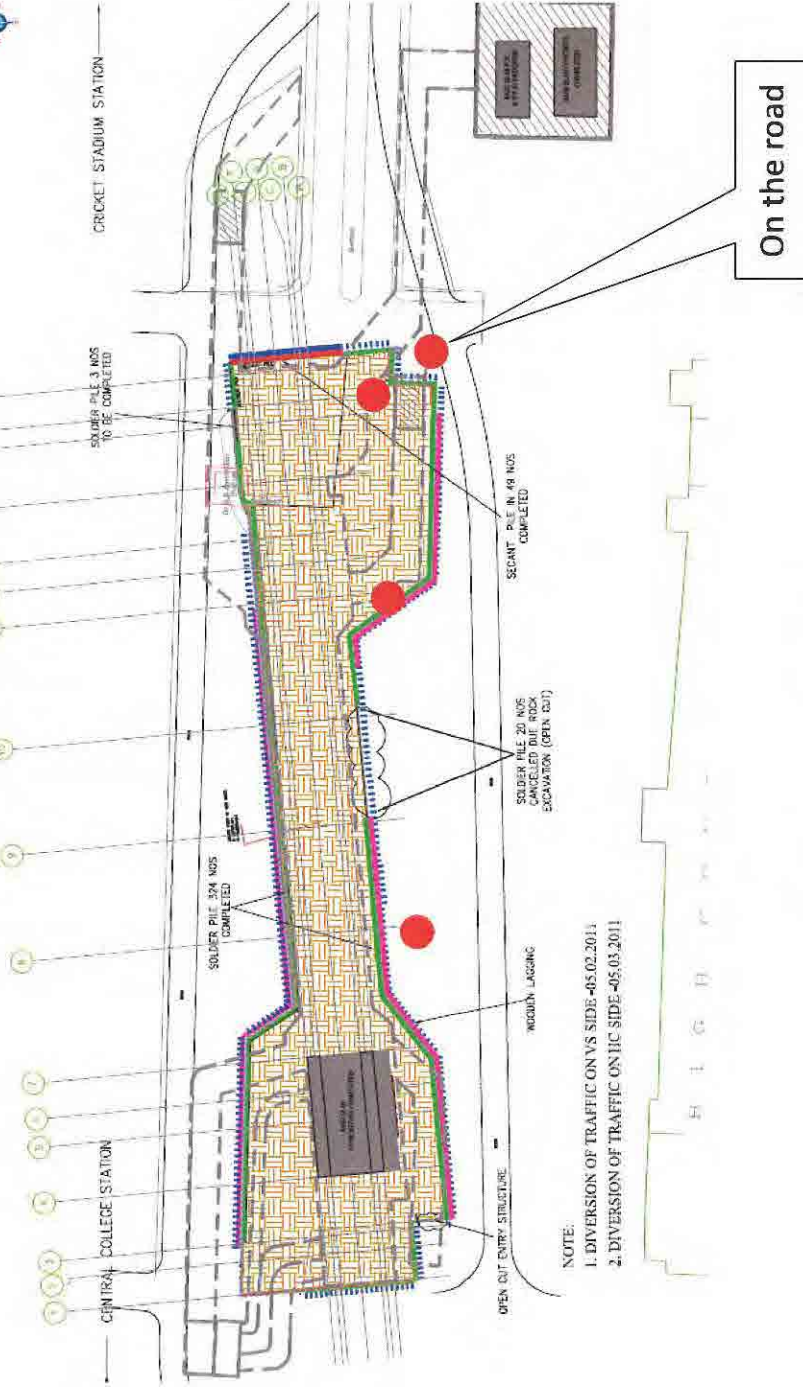
Date	17/1/2012	Name	Praveen H.	Mobile	5	Box	John		
Time	Place	1st	2nd	3rd	4th	5th	Ave.	Drilling	Remark
9:00	P1	0.2	0.0	0.0	0.3	0.3	0.2	No	
	P2	0.0	0.6	0.0	0.0	0.1	0.0	No	
	P3	0.1	0.2	0.1	0.0	0.1	0.1	No	
	Office	0.0	0.0	0.0	0.1	0.0	0.0	No	
11:00	P1	0.0	0.0	0.0	0.0	0.0	0.0	No	
	P2	4.8	4.8	4.6	4.3	3.6	4.6	No	
	P3	0.1	0.1	0.0	0.0	0.0	0.0	No	
	Office	0.2	0.1	0.1	0.0	0.0	0.1	No	
14:00	P1	0.1	0.0	0.2	0.1	0.0	0.1	No	
	P2	0.0	0.1	0.2	0.1	0.6	0.1	No	
	P3	0.6	0.0	0.3	0.3	0.1	0.2	No	
	Office	0.2	0.1	0.0	0.0	0.0	0.0	No	
17:00	P1	0.1	0.1	0.2	0.0	0.0	0.1	No	
	P2	0.1	0.6	0.1	0.1	0.0	0.1	No	
	P3	0.1	0.3	0.6	0.3	0.0	0.2	No	
	Office	0.1	0.1	0.2	0.1	0.3	0.1	No	

Date	18/1/2012	Name	Praveen H.	Mobile	5	Box	John		
Time	Place	1st	2nd	3rd	4th	5th	Ave.	Drilling	Remark
9:00	P1	0.1	0.2	0.1	0.1	0.2	0.1	No	
	P2	0.3	0.1	0.1	0.4	0.1	0.2	No	
	P3	0.1	0.1	0.2	0.1	0.1	0.1	No	
	Office	0.1	0.1	0.0	0.0	0.0	0.0	No	
11:00	P1	0.2	0.2	0.1	0.1	0.1	0.1	No	
	P2	0.3	0.2	0.2	0.1	0.1	0.2	No	
	P3	0.1	0.1	0.2	0.1	0.0	0.1	No	



VIDHANA SOUDHA STATION

AS ON 08.02.2012



NOTE:

- 1. DIVERSION OF TRAFFIC ON VS SIDE -05.02.2011
- 2. DIVERSION OF TRAFFIC ON HC SIDE -05.03.2011

● : Dust Monitoring Place

## Dust Density Check Sheet

Place	Time	Detector report	Dust Concentration	Work Item
Date		16/1/2012		
Date		18/01/2012		
Office		-	4.3 mg/m <sup>3</sup>	drilling
Road		-	1.2 mg/m <sup>3</sup>	vehicle passing
Date		19/01/2012		
Office	4:00 PM	-	0.9 mg/m <sup>3</sup>	No work
Road	4:45 PM	-	0.5 mg/m <sup>3</sup>	vehicle passing
Date		27/01/2012		
Office	3:00 PM	-	0.2mg/m <sup>3</sup>	No work
Road	3:30 PM	-	0.7 mg/m <sup>3</sup>	No vehicle passing
Date		30/01/2012		
Office	11:15 AM			
Office		0.072 mg/m <sup>3</sup>	-	No work
Place 1		1.389 mg/m <sup>3</sup>	-	Drilling
Place 2		0.197mg/m <sup>3</sup>	-	No work
Place 3		0.127 mg/m <sup>3</sup>	-	No work
Road		0.094 mg/m <sup>3</sup>	-	vehicle passing
Place 1		0.123 mg/m <sup>3</sup>	-	vehicle passing
Place 2		0.146 mg/m <sup>3</sup>	-	vehicle passing
Place 3		0.073 mg/m <sup>3</sup>	-	vehicle passing
Date		31/01/2012		
Office	11:15 AM			
Office		0.045 mg/m <sup>3</sup>	-	No work
Place 1		0.592 mg/m <sup>3</sup>	-	Drilling
Place 2		0.095 mg/m <sup>3</sup>	-	No work
Place 3		0.128 mg/m <sup>3</sup>	-	No work
Road		0.073 mg/m <sup>3</sup>	-	vehicle passing
Place 1		0.105 mg/m <sup>3</sup>	-	vehicle passing
Place 2		0.123 mg/m <sup>3</sup>	-	vehicle passing
Place 3		0.064 mg/m <sup>3</sup>	-	vehicle passing



## **ANNEX 1-3**

Photo

## Installation of OSV Equipments



Installation of Strain Gauge for Strut Axial Force at Cricket Stadium Station



Inclinometer on Secant Pile and Lighting Conditions (Blue) at Cricket Stadium Station



Installation of Inclinometer and OSV Display Equipment at Cricket Stadium Station

## OSV Equipment under Operation



OSV Display (Blue & Yellow) for Ground Anchor Axial Force at Central College Station



OSV Lighting for Axial Force of Strut monitored by Strain Gauge (Cricket Stadium St.)



OSV Display at Cricket Stadium St. (Struts & Inclinator) and at BSNL (Tilt Meter)

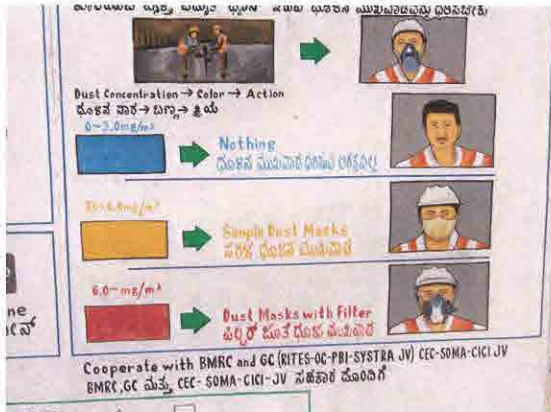
## Dust Monitoring by HTC camera and Monitoring Box



Dusty Condition under Rock Drilling Work



Preparation of Dust Box and Taking Digital Photos by HTC on Site



Notice Board showing Extent of Dust by Colors and Classification of Dust Density

## Presentation of OSV to BMRC



Presentation of OSV to BMRC on 26th July 2011



Presentation of OSV to BMRC on 27th July 2011



Presentation of OSV to BMRC on 28th July 2011



Presentation of OSV to BMRC on 29th July 2011

Evacuation Training (1st) on 26th August 2011



Preliminary Presentation for the Evacuation Training in Advance



Preparation for Evacuation Direction and Temporary Evacuation Route



Post Training Lecture by Safety Officer for Site Workers

Environmental Training (1st) on 16th September 2011



Preliminary Presentation for the Environmental Training in Advance



Environmental Training on Site



Demonstration of Taking Digital Photo by HTC camera

Training Program on the OSV & Dust Monitoring on 22nd November 2011



Reception at the Venue and the Workshop Program



Lecturers and the Presentation by JICA Representative Mr. Sano



Presentation of Dust Monitoring by Professor Shinji and Project Manager Abe



Question Survey regarding OSV and Dust Monitoring



Question Survey for Evacuation by Interview to Site Workers and Engineers



Question Survey for Environmental Training by Interview to Site Workers



Final Question Survey for Environmental & Evacuation Training by Interview on 5 Jan.

Environmental & Evacuation Training (2nd) on 20th & 22nd December



Environmental Training by Safety Officer to Site Workers



Evacuation Training for Site Workers & Information Board at Cricket Stadium Station



Post Training Lecture for Evacuation by Safety Officer and Project Manager Abe

Final JICA Workshop on 24th January 2012



Reception at Pride Hotel and Lecturers



Attendees and Presentation of OSV by Professor Akutagawa



Presentation of Dust Monitoring by Professor Shinji and Site Visit after Workshop

JICA Study Team cordially invites you to



**The Final Workshop for On Site Visualization  
and Dust Monitoring on Bangalore Metro Project**

on 24<sup>th</sup> January 2012, 9:45 to 17:00 Onwards

at Banquet Hall, The PRIDE HOTEL (+91-80 43484348), 93 Richmond Road, Bangalore

**Program**

- 09:15-09:55 Reception
- 09:45-10:00 Opening Speech by **Mr. S. Yamanaka**, Chief Representative, JICA INDIA
- 10:00-10:10 Welcome / Inaugural Speech by **Mr. N. Sivasailam**, Managing Director, Bangalore Metro Rail Corporation (BMRCL), INDIA
- 10:10-10:20 Speech by **Mr. S. Chandra**, Director Projects, BMRCL, INDIA
- 10:20-10:30 Speech by **Mr. N. P. Sharma**, Chief Engineer (Underground), BMRCL, INDIA
- 10:30-10:45 Presentation regarding Bangalore Metro Project by **Mr. K. R. Shivananda**, Dy. Chief Engineer, BMRCL, INDIA
- 10:45-11:30 Report on OSV monitoring by **Professor S. Akutagawa**, Kobe University JAPAN
- 11:30-11:45 Presentation regarding OSV monitoring in Delhi Metro by **Mr. J. Tyagi**, Chief General Manager, Delhi Metro Rail Corporation, INDIA
- 11:45-12:00 Coffee Break
- 12:00-12:10 Speech by **Mr. Pahuja. D. D.**, Director Projects, BMRCL, INDIA
- 12:10-12:20 Brief Introduction of Special Invitees from other Metro Projects
- 12:20-13:00 Report on Dust Monitoring by **Professor M. Shinji**, Yamaguchi University, JAPAN
- 13:00-13:20 Report on geological analysis for OSV by **Professor T. G. Sitharam**, Indian Institute of Science, INDIA
- 13:20-14:20 Lunch Break
- 14:20-14:40 Report on Question Survey of OSV & DUST monitoring, **Dr. Ravi S.**, Central Road Research Institute, INDIA
- 14:40-15:00 Q & A
- 15:00-15:10 Closing Speech by **Ms. R. Abe**, Project Manager of JICA Study Team (Oriental Consultants), JAPAN
- 15:10-17:00 Site Visit for OSV and Dust Monitoring at BMRC construction site



## JICA Study Team in association with CiSTUP

Cordially invites you to

### Training programme on the On Site Visualisation and Dust Monitoring on Bangalore Metro Project

on 22<sup>nd</sup> November 2011, at 10:00 a.m. Onwards  
at Faculty Hall, Main Building, Indian Institute of Science, Bangalore

#### Program

10:00-10:15 - Reception

10:15-10:30 - Welcome / Inaugural Speech by IISc

10:30-10:50 - Opening Speech by **Prof. T.G. Sithram, Chairman, CiSTUP, IISc**

10:50-11:20 - Report on the On Site Visualization for Bangalore Metro Project

by **Prof. S. Akutagawa, Kobe University**

11:20-11:30 - Discussion of preliminary Results of Questionnaire survey by **Dr. Ravi, Central Road Research Centre**

11:30-11:50 - Keynote Lecture regarding JICA Project

by **Mr. Y. Sano, Representative, JICA India**

11:50-12:10 - Coffee Break

12:10-12:30 - Special Lecture regarding the Bangalore Metro Project

by **Mr. K. R. Shivananda, Deputy Chief Engineer, BMRCL**

12:30-13:00 - Report on the Dust Monitoring for Bangalore Metro Project

by **Prof. M. Shinji, Yamaguchi University**

13:00-13:10 - Demonstration from Kobe University

13:10-13:20 - Demonstration from Yamaguchi University

13:20-13:30 - Presentation by **Mr. Yoshino, Tokyo University**

13:30-13:40 - Closing Speech by **Ms. R. Abe, Project Manager of JICA Team (Oriental Consultants Co. Ltd)**

13:40-14:40 - Lunch and Q&A



ALL ARE WELCOME