

2) Schematic Design Drawings based on Urban Planning of Ho Chi Minh City

The schematic design drawings on the 2nd phase based on the urban planning of Ho Chi Minh City are shown in the following pages. The ground level plans are different from the drawings under current traffic arrangement, however the underground plans and the sections are same as the drawings under current traffic arrangement. Therefore the relevant drawings to the ground level plan based on the urban planning of Ho Chi Minh City are shown in this section. In addition the perspective views of this project are attached.

The list of the schematic design drawings is as below.

Table 4.28 Drawing List of 2nd Phase based on Urban Planning of Ho Chi Minh City

Drawing No.	Drawing Title	Scale
Figure 4.66	2nd Phase Ground Level Whole Plan (Based on HCMC urban planning)	1/2500
Figure 4.67	Ground Level Plan 1 (Based on HCMC urban planning)	1/1000
Figure 4.68	Ground Level Plan 2 (Based on HCMC urban planning)	1/1000
Figure 4.69	Ground Level Plan 3 (Based on HCMC urban planning)	1/1000
Figure 4.70	Architectural Section 1	1/200
Figure 4.71	Architectural Section 2	1/200
Figure 4.72	Architectural Section 3	1/200
Figure 4.73	Perspective View 1 (Ground Level)	—
Figure 4.74	Perspective View 2 (Underground Plaza)	—
Figure 4.75	Perspective View 3 (Le Loi Street)	—

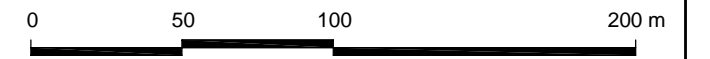
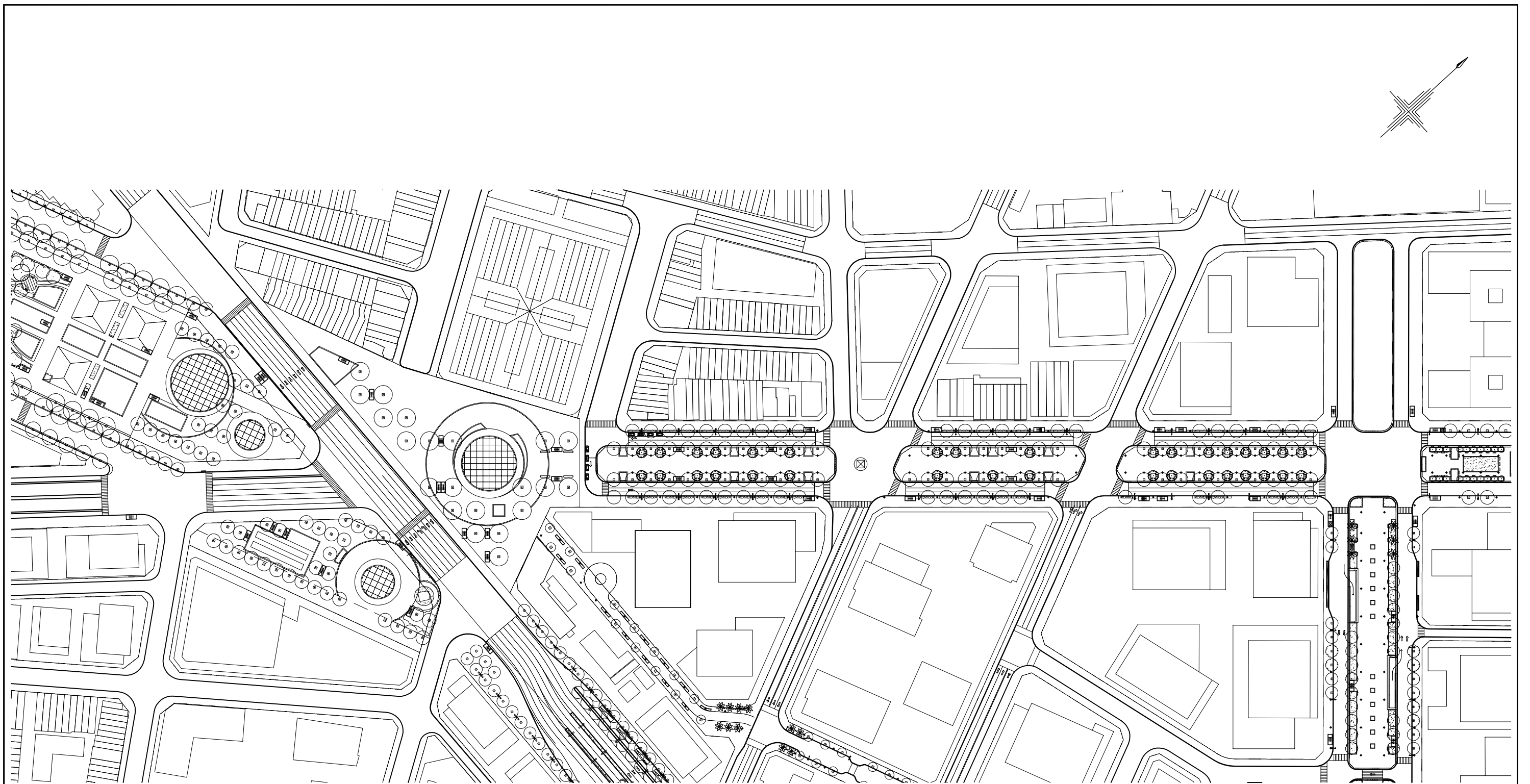
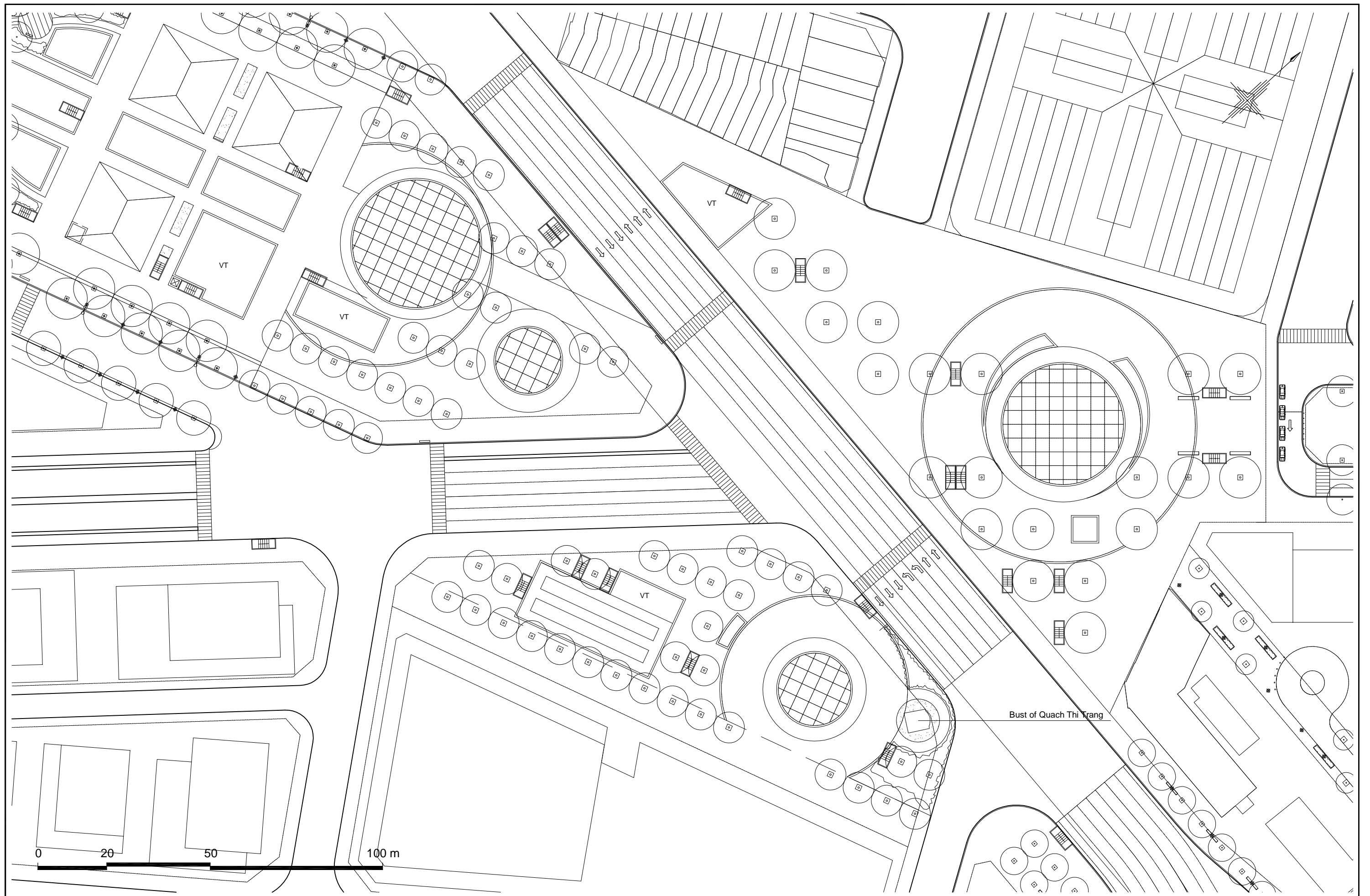


Figure4.66 Glood Level Whole Plan Based on HCMC urban planning

JICA STUDY TEAM FOR BTN CENTRAL STATION PROJECT NIKKEN SEKKEI CIVIL ENGINEERING LTD. NIKKEN SEKKEI RESEARCH INSTITUTE NIPPON KOEI CO.,LTD. JAPAN RAILWAY TECHNICAL SERVICE SUMITOMO REALTY & DEVELOPMENT CO.,LTD.	JAPAN INTERNATIONAL COOPERATION AGENCY(JICA)	DATA 10.12.2011
	PREPARATORY SURVEY ON BEN THANH CENTRAL STATION PROJECT	SCALE: A1:1/1250 A3:1/2500
	GLOUND LEVEL WHOLE PLAN (2nd Phase)	DWG NO. DFR-2-1



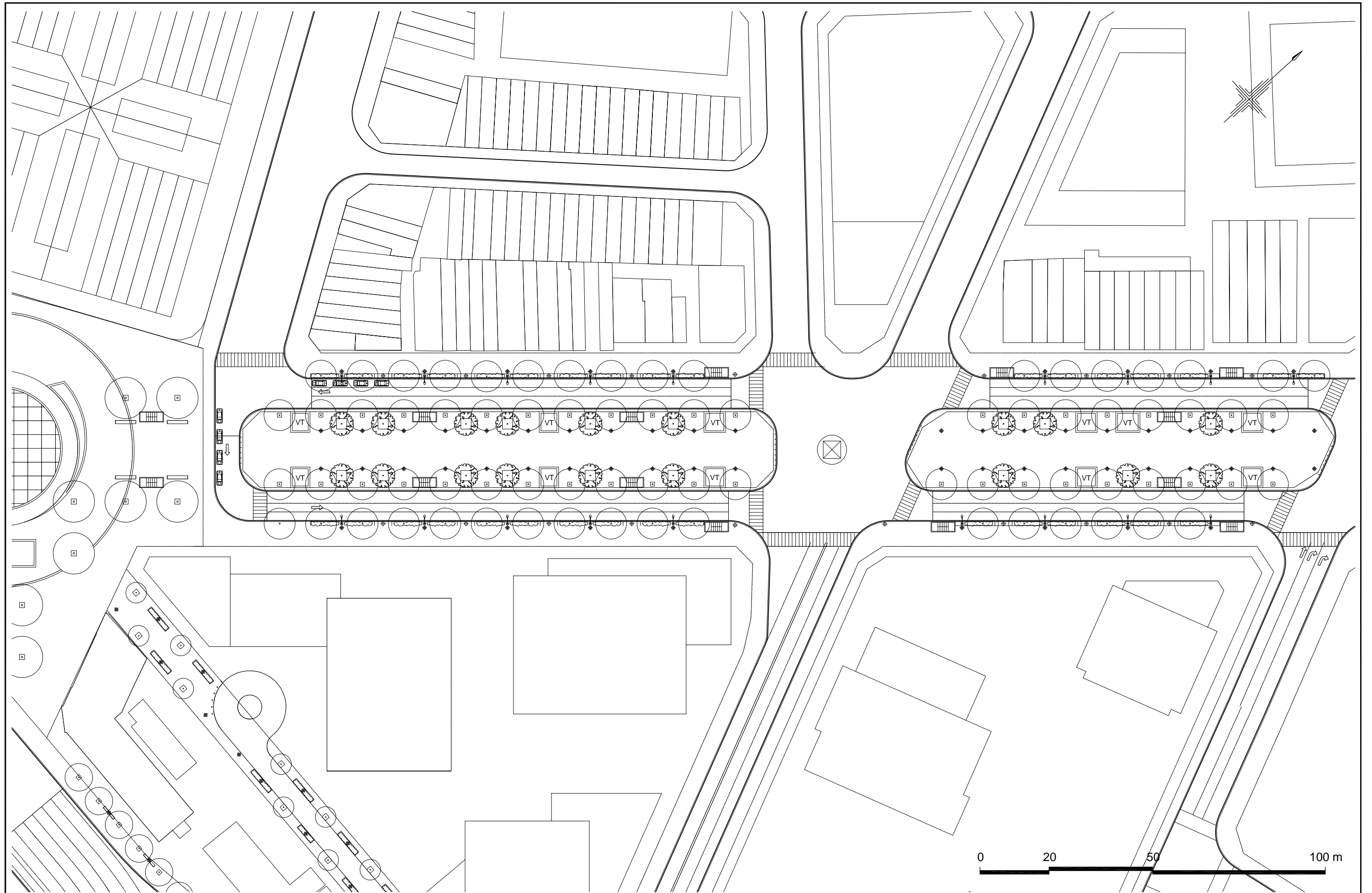
*VT : Ventilation Tower

Figure4.67 Glound Level Plan 1 Based on HCMC urban planning

JICA STUDY TEAM FOR BTN CENTRAL STATION PROJECT
 NIKKEN SEKKEI CIVIL ENGINEERING LTD.
 NIKKEN SEKKEI RESEARCH INSTITUTE
 NIPPON KOEI CO.,LTD.
 JAPAN RAILWAY TECHNICAL SERVICE
 SUMITOMO REALTY & DEVELOPMENT CO.,LTD.

JAPAN INTERNATIONAL COOPERATION AGENCY(JICA)
 PREPARATORY SURVEY ON
 BEN THANH CENTRAL STATION PROJECT
 GLOUND LEVEL PLAN 1 (2nd Phase)

DATE: 10.12.2011
 SCALE: A1:1/500 A3:1/1000
 DWG NO.: DFR-2-2



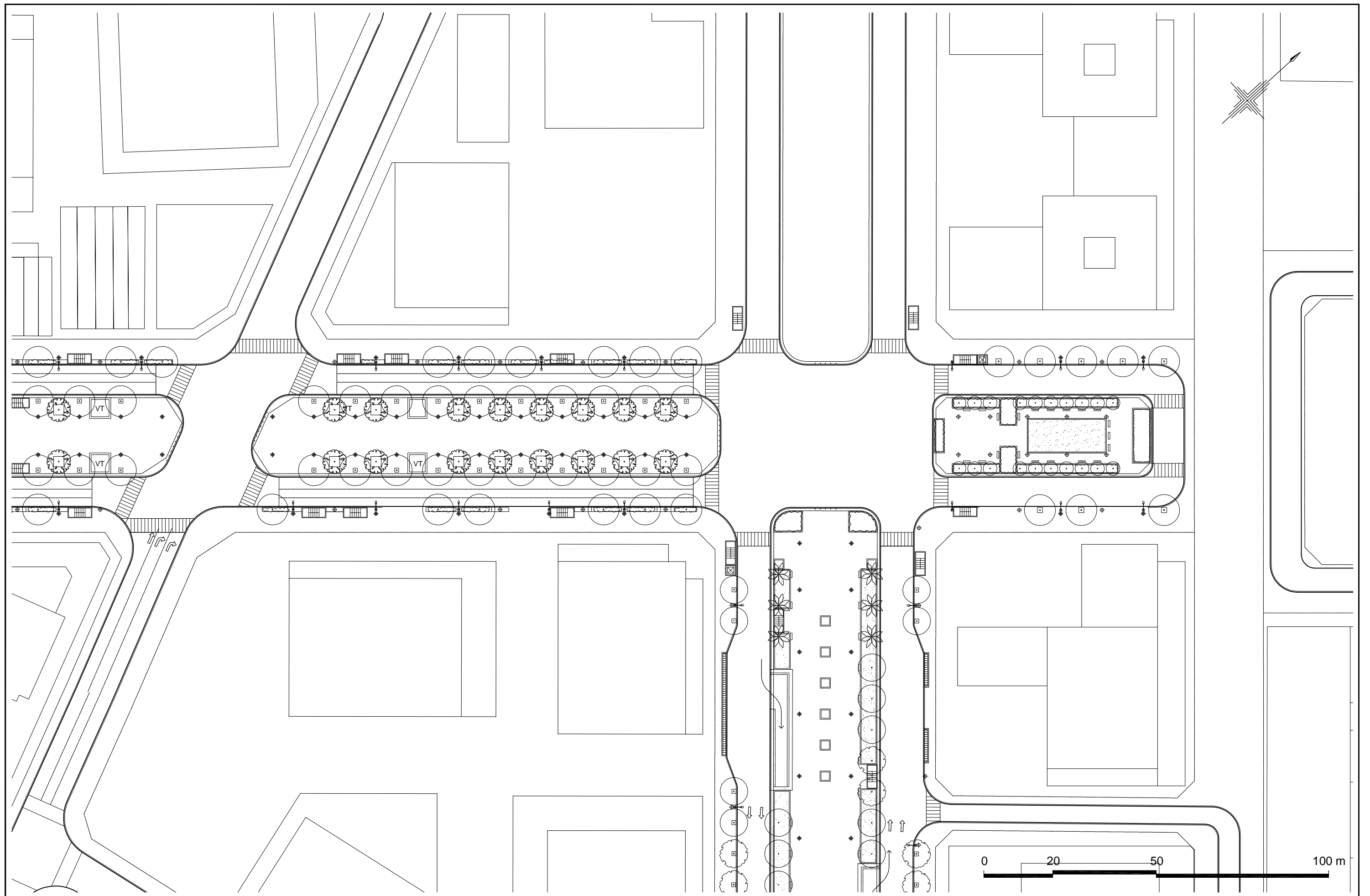
*VT : Ventilation Tower

Figure4.68 Glound Level Plan 2 Based on HCMC urban planning

JICA STUDY TEAM FOR BTN CENTRAL STATION PROJECT
 NIKKEN SEKKEI CIVIL ENGINEERING LTD.
 NIKKEN SEKKEI RESEARCH INSTITUTE
 NIPPON KOEI CO.,LTD.
 JAPAN RAILWAY TECHNICAL SERVICE
 SUMITOMO REALTY & DEVELOPMENT CO.,LTD.

JAPAN INTERNATIONAL COOPERATION AGENCY(JICA)
 PREPARATORY SURVEY ON
 BEN THANH CENTRAL STATION PROJECT
 GLOUND LEVEL PLAN 2 (2nd Phase)

DATA 10.12.2011
 SCALE: A1:1/500 A3:1/1000
 DWG NO. DFR-2-3



*VT : Ventilation Tower

Figure4.69 Glound Level Plan 3 Based on HCMC urban planning

JICA STUDY TEAM FOR BTN CENTRAL STATION PROJECT NIKKEN SEKKEI CIVIL ENGINEERING LTD. NIKKEN SEKKEI RESEARCH INSTITUTE NIPPON KOEI CO.,LTD. JAPAN RAILWAY TECHNICAL SERVICE SUMITOMO REALTY & DEVELOPMENT CO.,LTD.	JAPAN INTERNATIONAL COOPERATION AGENCY(JICA)	DATA 10.12.2011
	PREPARATORY SURVEY ON BEN THANH CENTRAL STATION PROJECT	SCALE. A1:1/500 A3:1/1000
	GLOUND LEVEL PLAN 3 (2nd Phase)	DWG NO. DFR-2-4

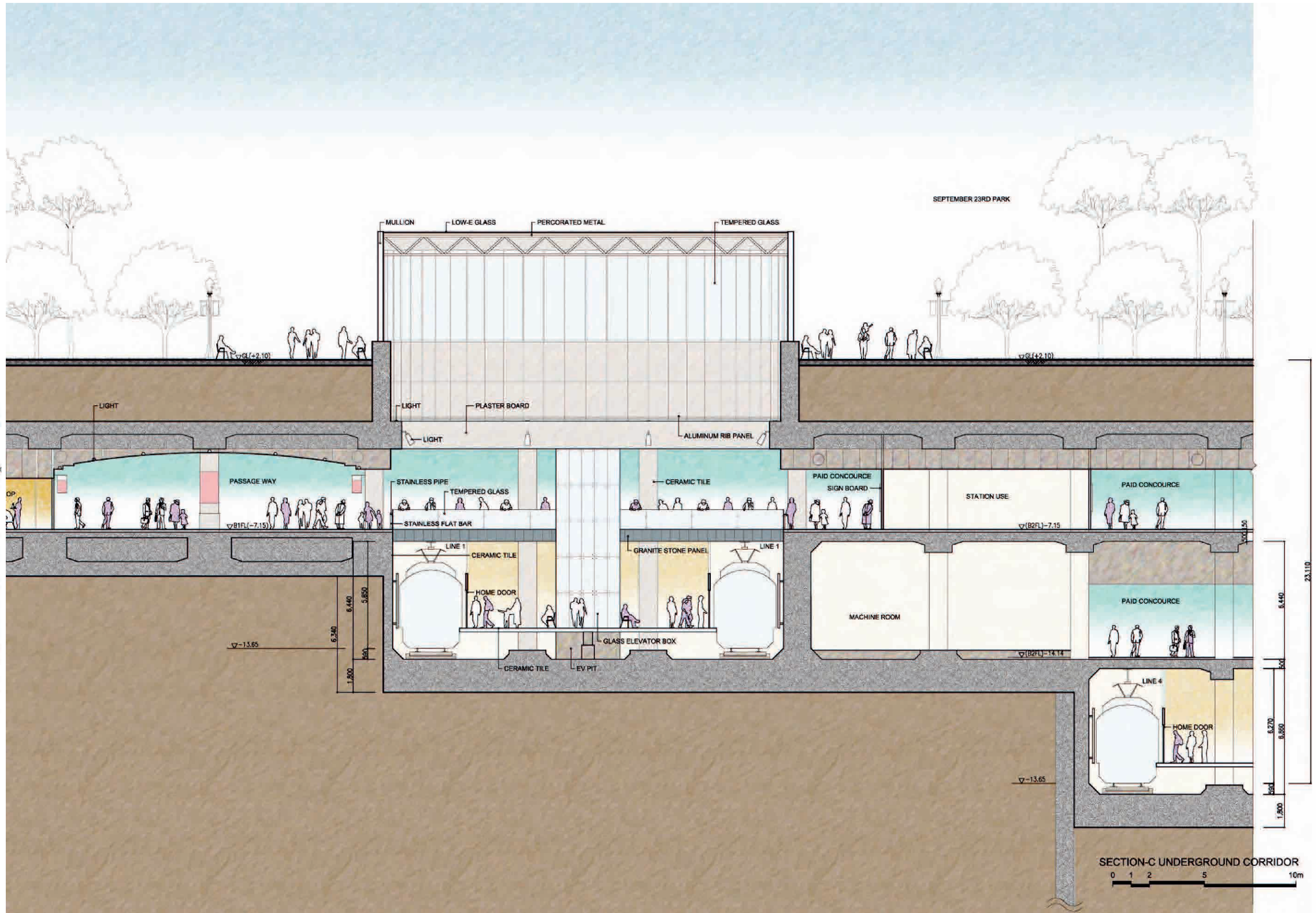


Figure4.70 Architectural Section 1

JICA STUDY TEAM FOR BTN CENTRAL STATION PROJECT	JAPAN INTERNATIONAL COOPERATION AGENCY(JICA)	DATA	10.12.2011
NIKKEN SEKKEI CIVIL ENGINEERING LTD.	PREPARATORY SURVEY ON	SCALE	A1:1/100 A3:1/200
NIKKEN SEKKEI RESEARCH INSTITUTE	BEN THANH CENTRAL STATION PROJECT	ARCHITECTURAL SECTION 1 (2nd Phase)	DWG NO. DFR-2-16
NIPPON KOEI CO.,LTD.			
JAPAN RAILWAY TECHNICAL SERVICE			
SUMITOMO REALTY & DEVELOPMENT CO.,LTD.			

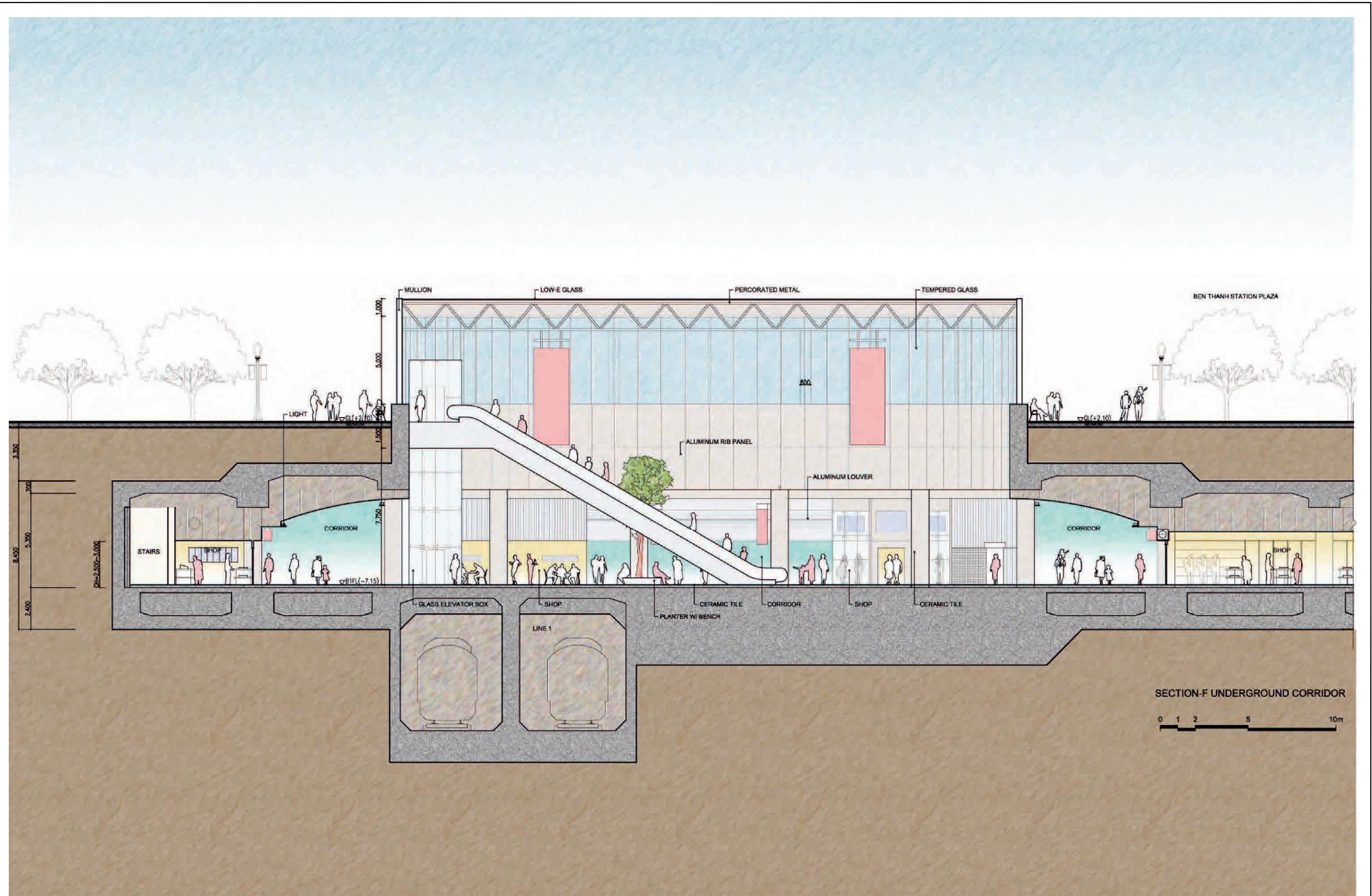


Figure4.71 Architectural Section 2

JICA STUDY TEAM FOR BTN CENTRAL STATION PROJECT	JAPAN INTERNATIONAL COOPERATION AGENCY(JICA)	DATA: 10.12.2011
NIKKEN SEKKEI CIVIL ENGINEERING LTD. NIKKEN SEKKEI RESEARCH INSTITUTE NIPPON KOEI CO.,LTD.	PREPARATORY SURVEY ON BEN THANH CENTRAL STATION PROJECT	SCALE: A1:1/100 A3:1/200
JAPAN RAILWAY TECHNICAL SERVICE SUMITOMO REALTY & DEVELOPMENT CO.,LTD.	ARCHITECTURAL SECTION 2 (2nd Phase)	DWG NO. DFR-2-17



Figure4.72 Architectural Section 3

JICA STUDY TEAM FOR BTN CENTRAL STATION PROJECT	JAPAN INTERNATIONAL COOPERATION AGENCY(JICA)	DATE 10.12.2011
NIKKEN SEKKEI CIVIL ENGINEERING LTD. NIKKEN SEKKEI RESEARCH INSTITUTE NIPPON KOEI CO.,LTD.	PREPARATORY SURVEY ON BEN THANH CENTRAL STATION PROJECT	SCALE: A1:1/100 A3:1/200
JAPAN RAILWAY TECHNICAL SERVICE SUMITOMO REALTY & DEVELOPMENT CO.,LTD.	ARCHITECTURAL SECTION 3 (2nd Phase)	DWG NO. DFR-2-18



Figure 4.73 Perspective View 1 (Ground Level)



Figure 4.74 Perspective View 2 (Underground Plaza)



Figure 4.75 Perspective View 3 (Le Loi Street)