

PREPARATORY STUDY REPORT
ON
THE PROJECT FOR IMPROVEMENT
OF NATIONAL ROAD NO.1 (PHNOM PENH-NEAK LOEUNG SECTION)
IN
KINGDOM OF CAMBODIA

DRAWINGS

JANUARY 2012

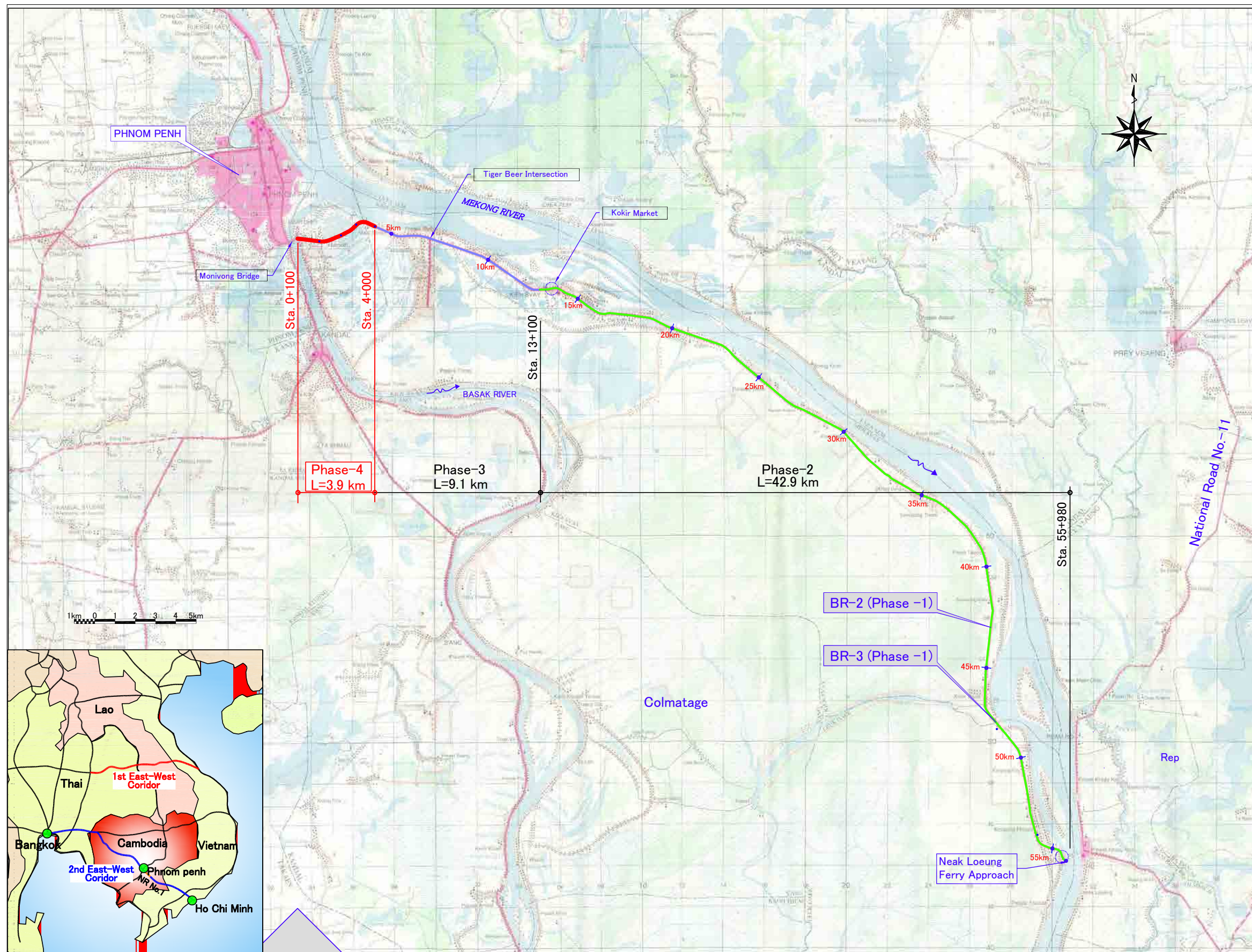
JAPAN INTERNATIONAL COOPERATION AGENCY

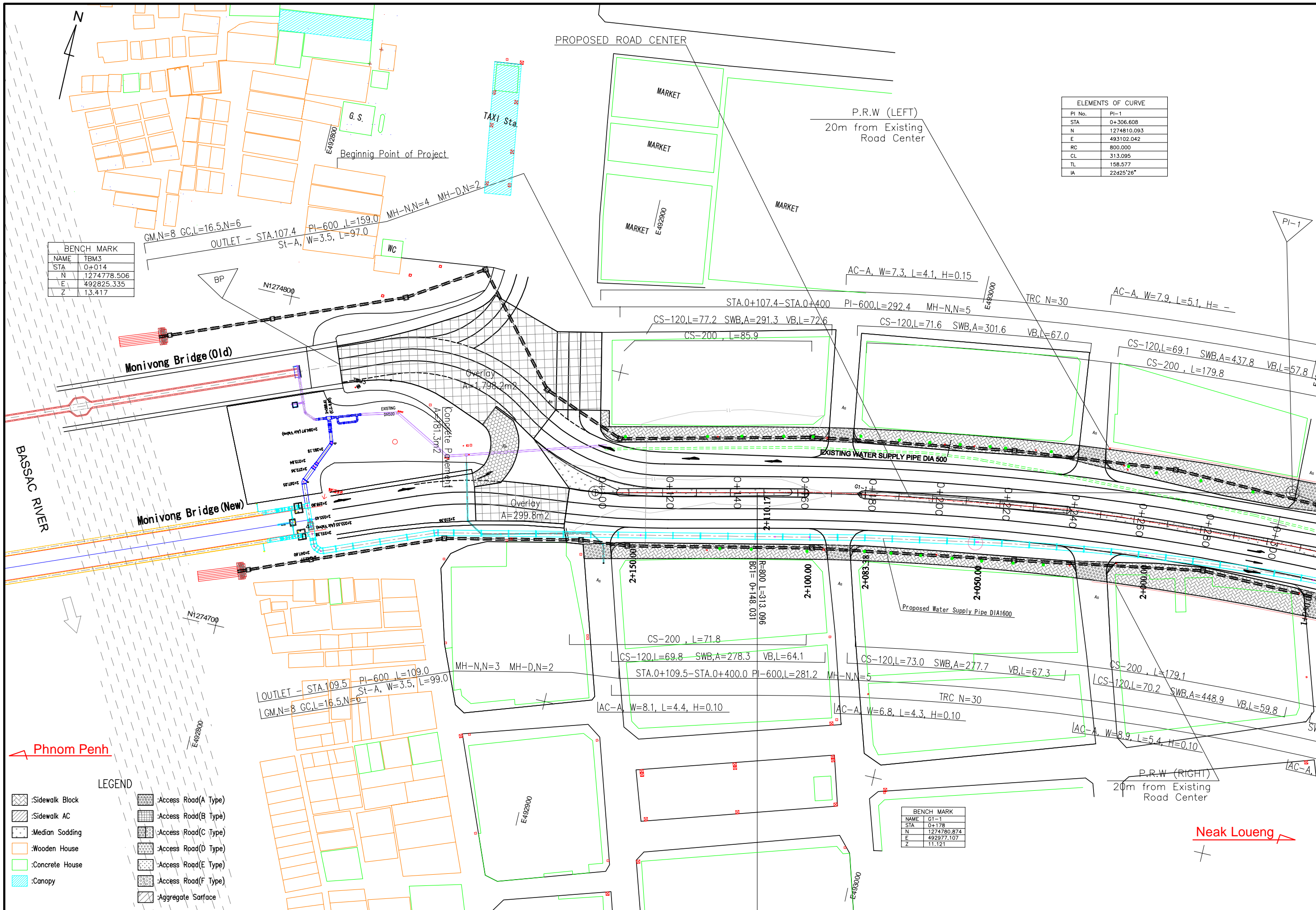
KATAHIRA & ENGINEERS INTERNATIONAL

CONTENTS OF DRAWINGS

1) LOCATION MAP	LC - 1
2) PLAN	PL - 1~13
3) PROFILE	PR - 1~12
4) TYPICAL CROSS SECTIONS	TC - 1
5) REPLACEMENT OF EXISTING GROUD	RP - 1
6) ROAD STRUCTURES	RS - 1
7) ACCESS ROADS	AR - 1
8) BUS BAY DETAIL	BB - 1
9) GABION MATTRESS WALL	GM - 1
10) DRAINAGE STRUCTURES	DR - 1~8
11) ROAD MARKINGS	RM - 1~3
12) ROAD SIGNS	RS- 1
13) KIRO POST AND CAT EYE DETAIL	KC- 1

TOTAL 45 Sheets





ELEMENTS OF CURVE	
PI No.	PI-1
STA	0+306.608
N	1274810.093
E	493102.042
RC	800.000
CL	313.095
TL	158.577
IA	22625'26"

BENCH MARK	
NAME	TBM3
STA	0+014
N	1274778.506
E	492825.335
Z	13.417

BENCH MARK	
NAME	G1-1
STA	0+178
N	1274780.874
E	492977.107
Z	11.121

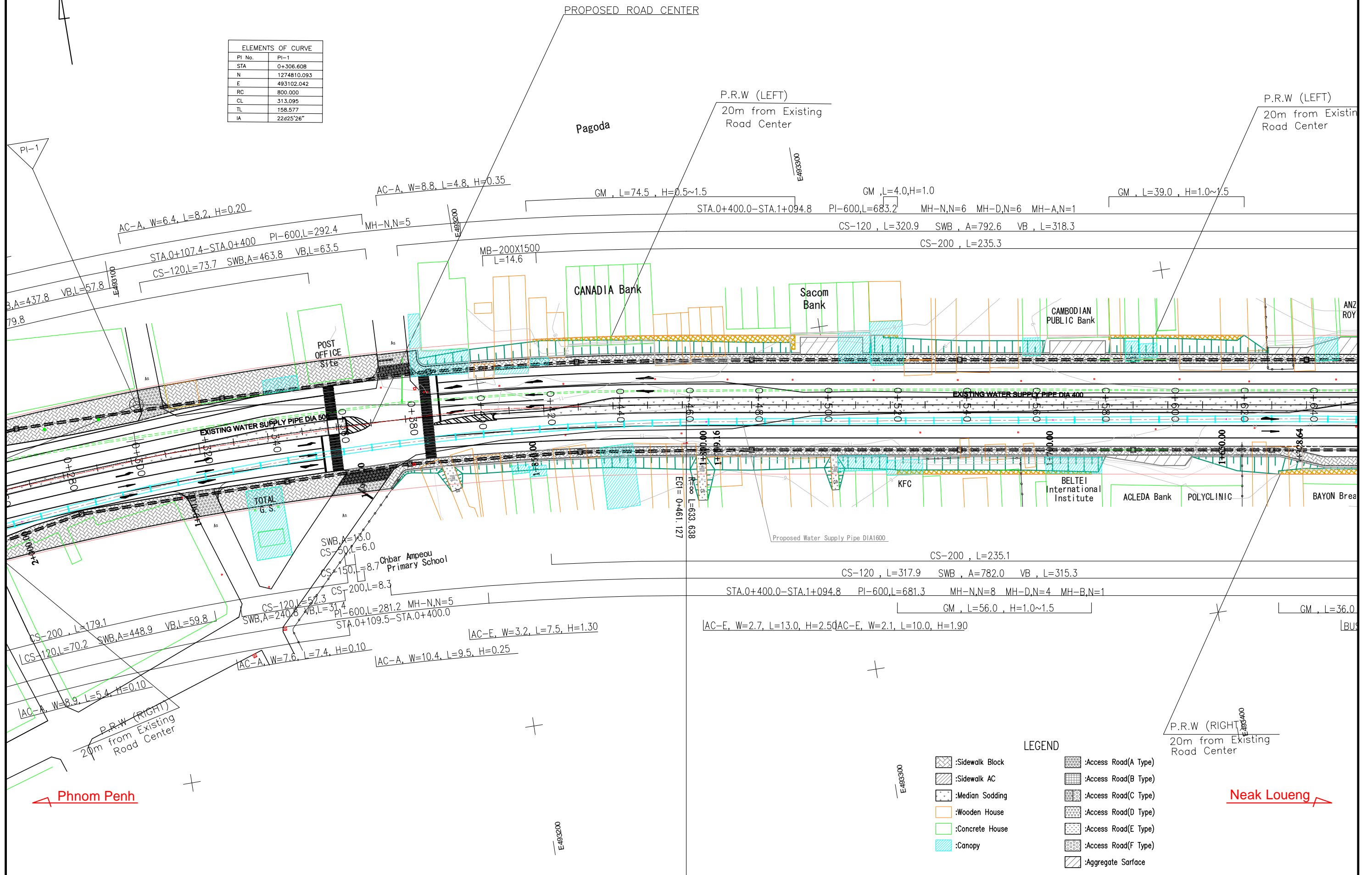
Phnom Penh

Neak Loueng

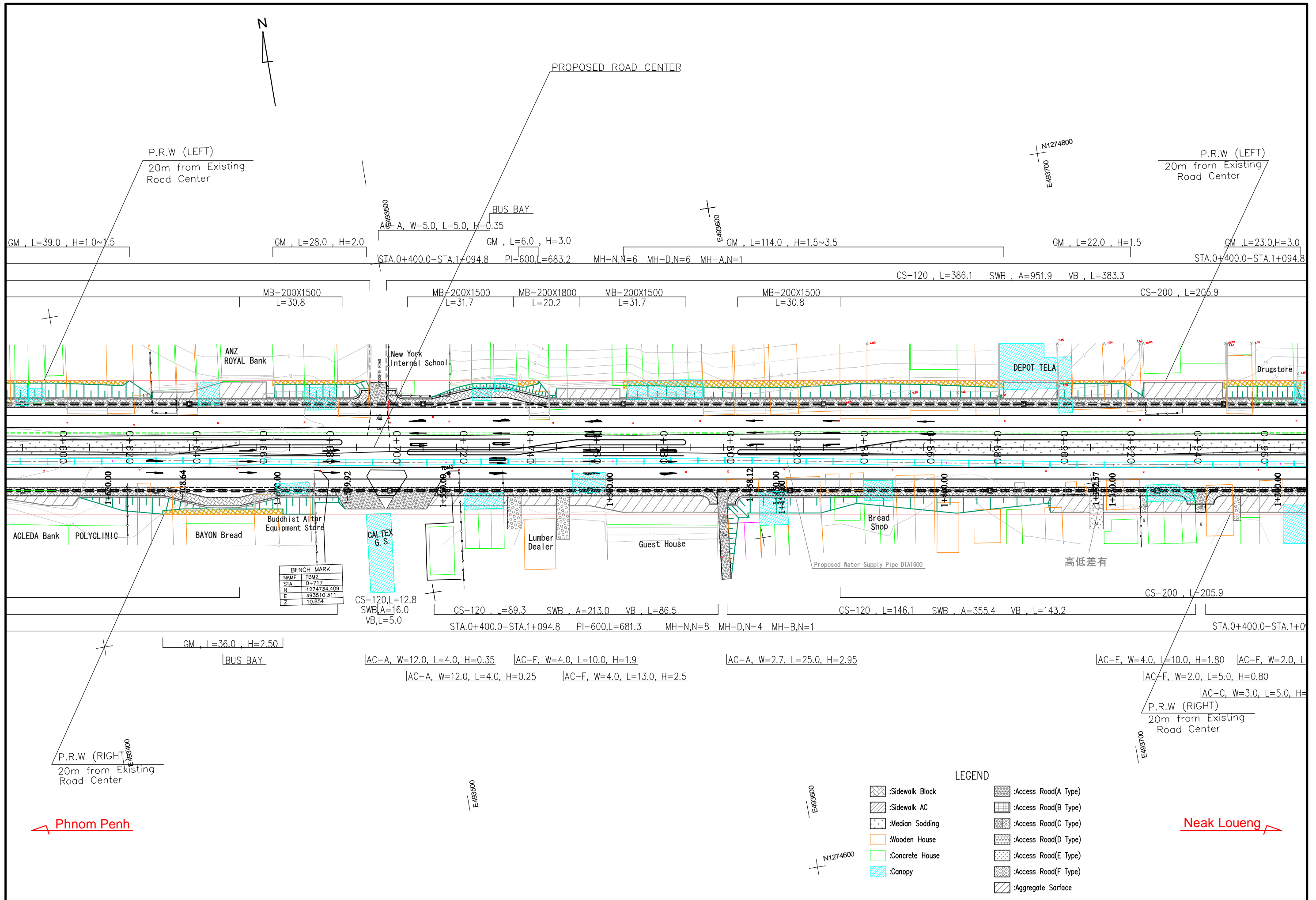
LEGEND	
	:Sidewalk Block
	:Sidewalk AC
	:Median Sodding
	:Wooden House
	:Concrete House
	:Canopy
	:Access Road(A Type)
	:Access Road(B Type)
	:Access Road(C Type)
	:Access Road(D Type)
	:Access Road(E Type)
	:Access Road(F Type)
	:Aggregate Surface

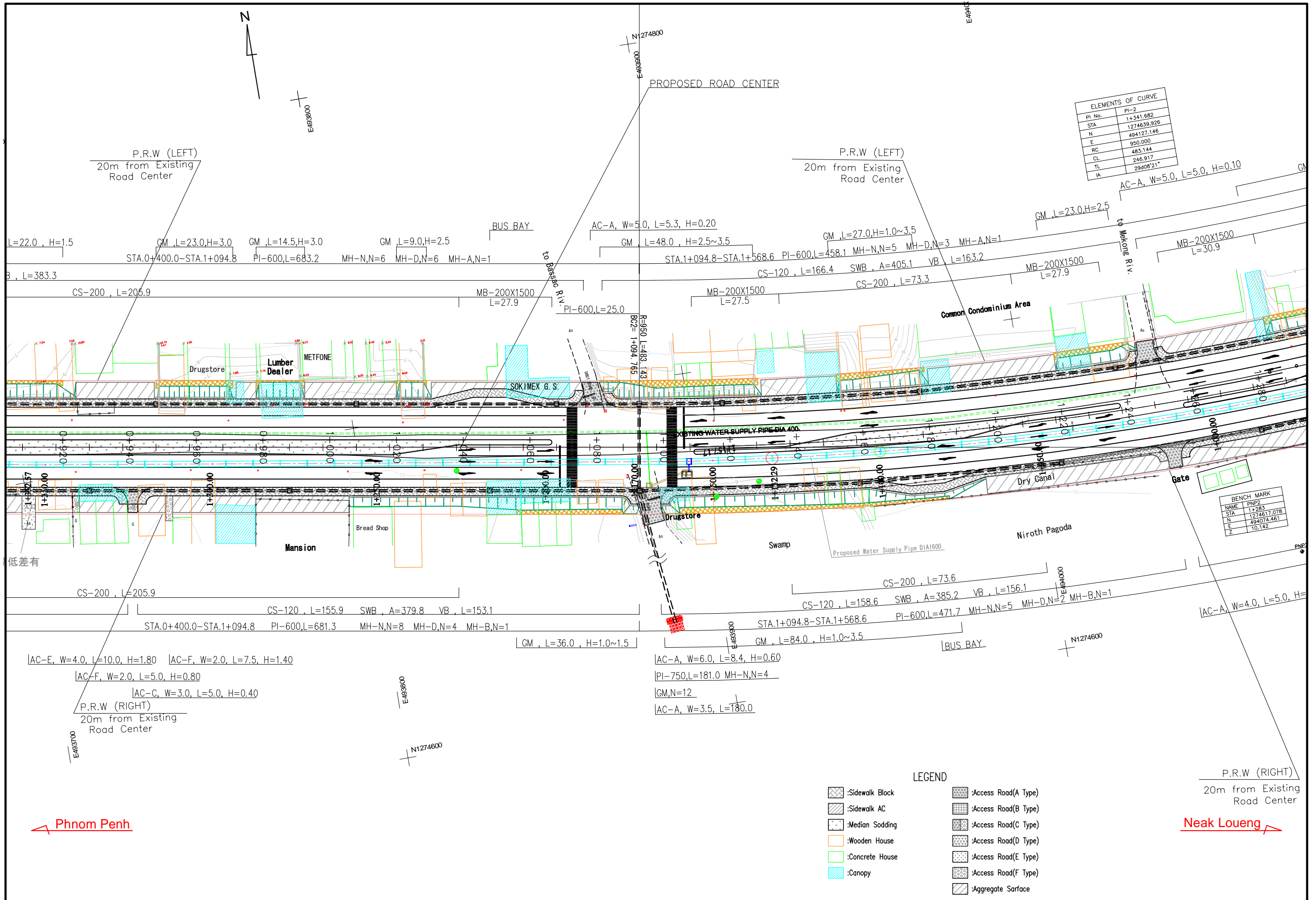


ELEMENTS OF CURVE	
PI No.	PI-1
STA	0+306.608
N	1274810.093
E	493102.042
RC	800.000
CL	313.095
TL	158.577
IA	22d25'26"



- LEGEND**
- :Sidewalk Block
 - :Sidewalk AC
 - :Median Sodding
 - :Wooden House
 - :Concrete House
 - :Canopy
 - :Access Road(A Type)
 - :Access Road(B Type)
 - :Access Road(C Type)
 - :Access Road(D Type)
 - :Access Road(E Type)
 - :Access Road(F Type)
 - :Aggregate Surface





ELEMENTS OF CURVE	
PI No.	PI-2
STA	1+341.682
N	1274639.926
E	494127.146
RC	950.000
CL	483.144
TL	246.917
IA	29408'21"

BENCH MARK	
NAME	PNP2
STA	1+283
N	1274617.078
E	494074.461
Z	10.142

LEGEND

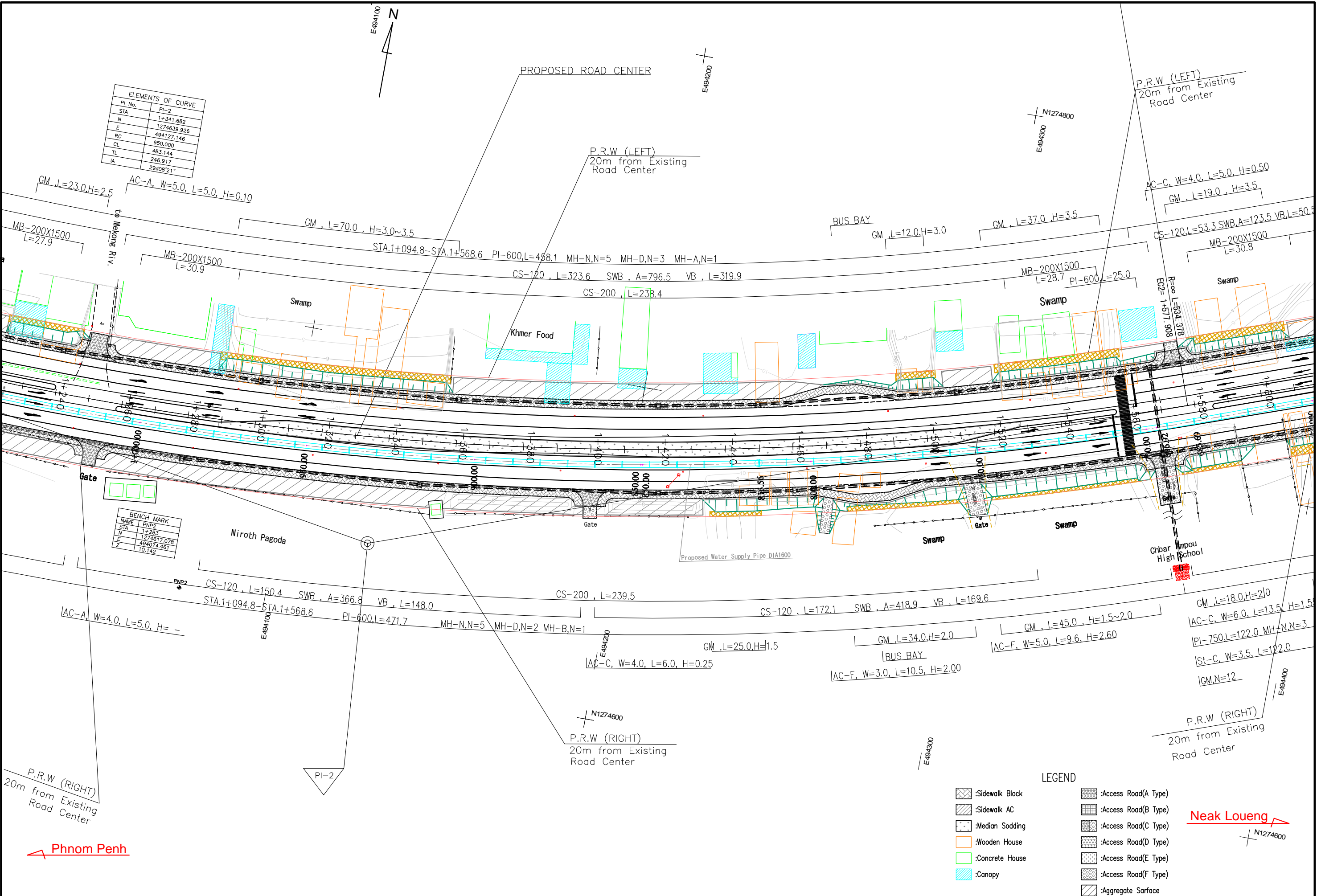
- :Sidewalk Block
- :Sidewalk AC
- :Median Sodding
- :Wooden House
- :Concrete House
- :Canopy
- :Access Road(A Type)
- :Access Road(B Type)
- :Access Road(C Type)
- :Access Road(D Type)
- :Access Road(E Type)
- :Access Road(F Type)
- :Aggregate Surface

Phnom Penh

Neak Loueng

ELEMENTS OF CURVE	
PI No.	PI-2
STA	1+341.682
N	1274639.926
E	494127.146
CL	950.000
TL	483.144
IA	246.917
	29808'21"

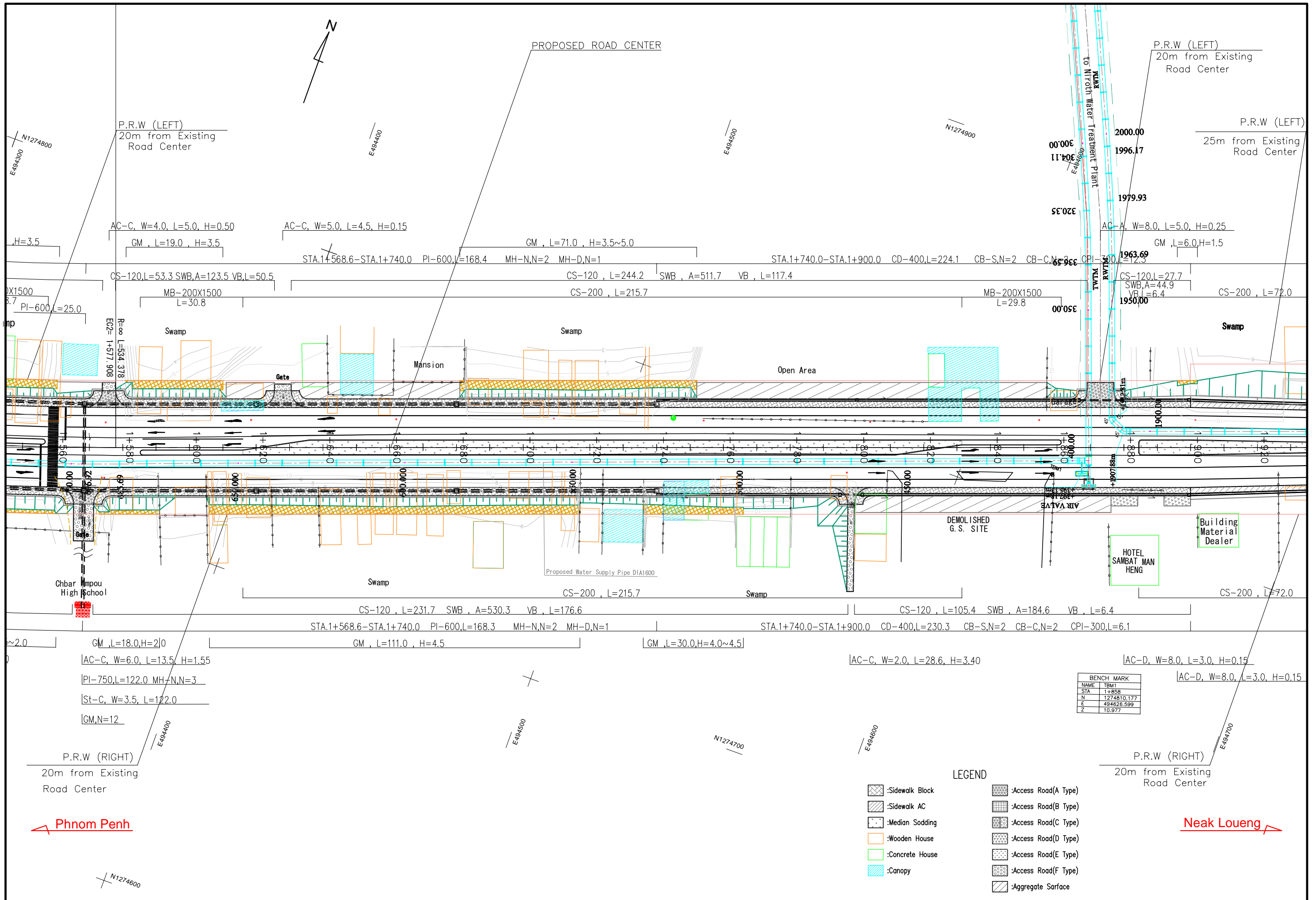
BENCH MARK	
NAME	PNP2
STA	1+283
N	1274617.078
E	494074.461
Z	10.142



LEGEND

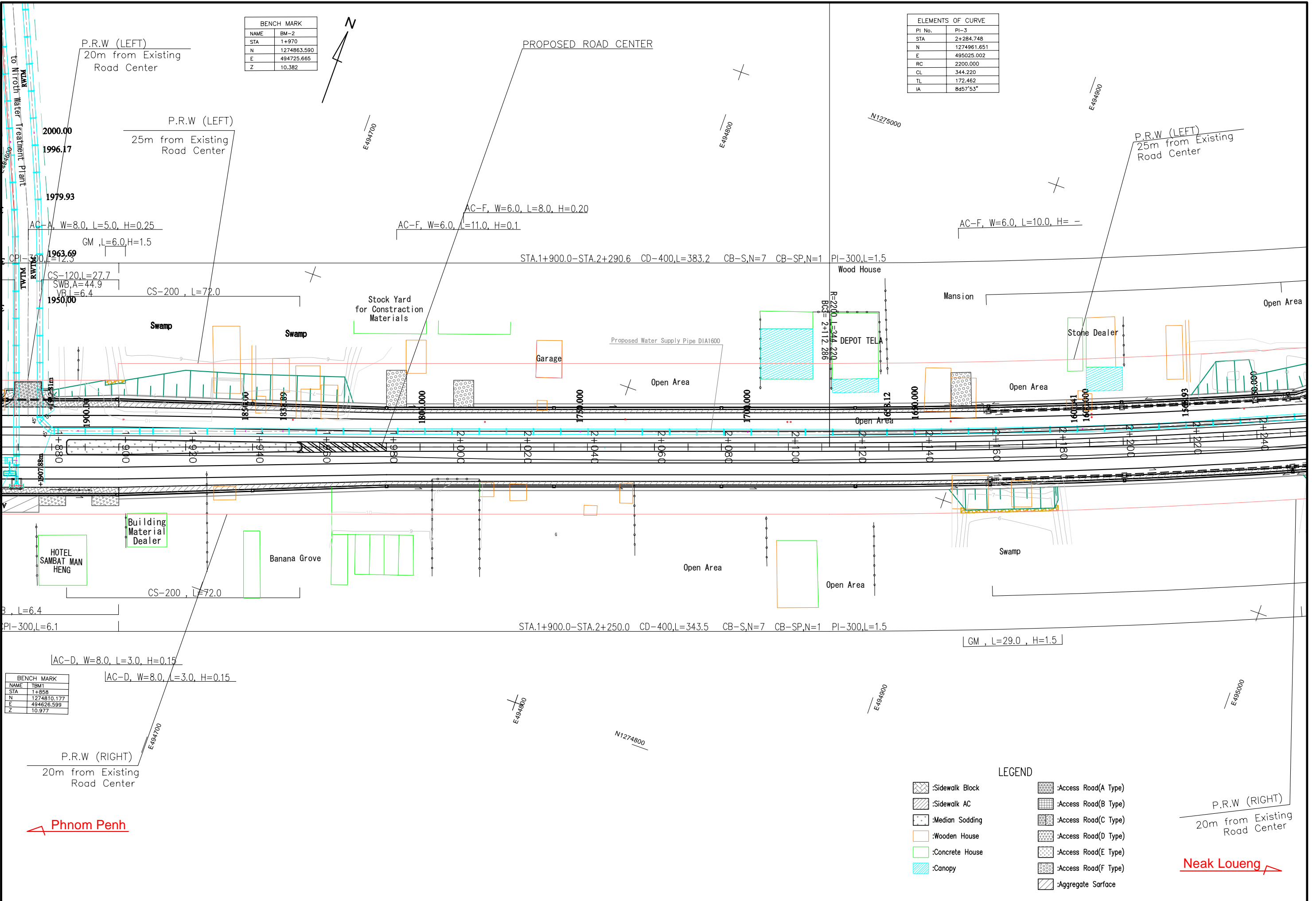
	:Sidewalk Block		:Access Road(A Type)
	:Sidewalk AC		:Access Road(B Type)
	:Median Sodding		:Access Road(C Type)
	:Wooden House		:Access Road(D Type)
	:Concrete House		:Access Road(E Type)
	:Canopy		:Access Road(F Type)
			:Aggregate Surface

Neak Loueng



BENCH MARK	
NAME	BM-2
STA	1+970
N	1274863.590
E	494725.665
Z	10.382

ELEMENTS OF CURVE	
PI No.	PI-3
STA	2+284.748
N	1274961.651
E	495025.002
RC	2200.000
CL	344.220
TL	172.462
IA	8d57'53"

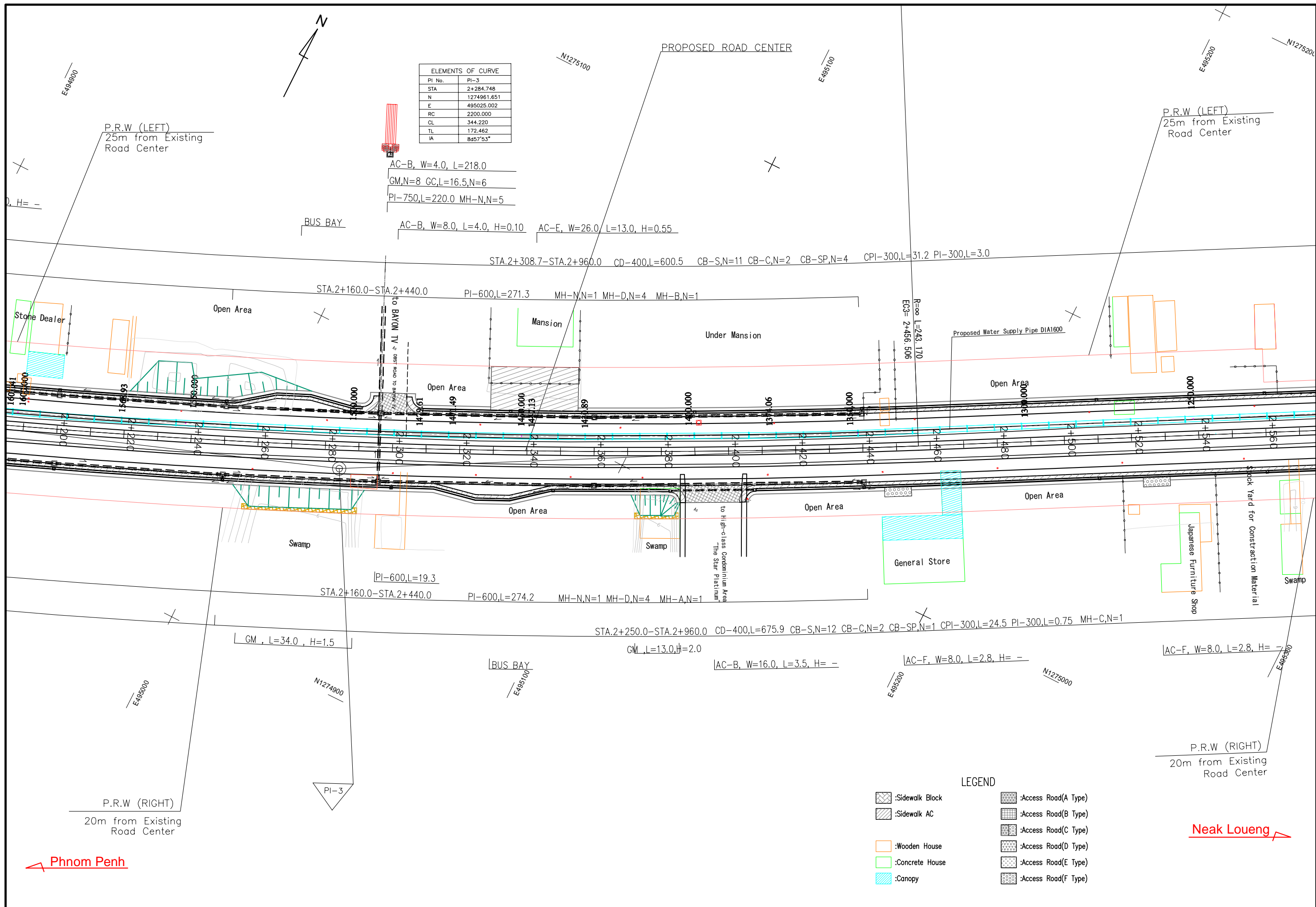


BENCH MARK	
NAME	TBM1
STA	1+858
N	1274810.177
E	494626.599
Z	10.977

LEGEND	
	:Sidewalk Block
	:Sidewalk AC
	:Median Sodding
	:Wooden House
	:Concrete House
	:Canopy
	:Access Road(A Type)
	:Access Road(B Type)
	:Access Road(C Type)
	:Access Road(D Type)
	:Access Road(E Type)
	:Access Road(F Type)
	:Aggregate Surface

Phnom Penh

Neak Loueng



ELEMENTS OF CURVE	
PI No.	PI-3
STA	2+284.748
N	1274961.651
E	495025.002
RC	2200.000
CL	344.220
TL	172.462
IA	8d57'53"

AC-B, W=4.0, L=218.0
 GM,N=8 GC,L=16.5,N=6
 PI-750,L=220.0 MH-N,N=5

AC-B, W=8.0, L=4.0, H=0.10 AC-E, W=26.0, L=13.0, H=0.55

STA.2+308.7-STA.2+960.0 CD-400,L=600.5 CB-S,N=11 CB-C,N=2 CB-SP,N=4 CPI-300,L=31.2 PI-300,L=3.0

STA.2+160.0-STA.2+440.0 PI-600,L=271.3 MH-N,N=1 MH-D,N=4 MH-B,N=1

STA.2+160.0-STA.2+440.0 PI-600,L=19.3 PI-600,L=274.2 MH-N,N=1 MH-D,N=4 MH-A,N=1

STA.2+250.0-STA.2+960.0 CD-400,L=675.9 CB-S,N=12 CB-C,N=2 CB-SP,N=1 CPI-300,L=24.5 PI-300,L=0.75 MH-C,N=1

GM, L=34.0, H=1.5

GM, L=13.0, H=2.0

BUS BAY

AC-B, W=16.0, L=3.5, H=-

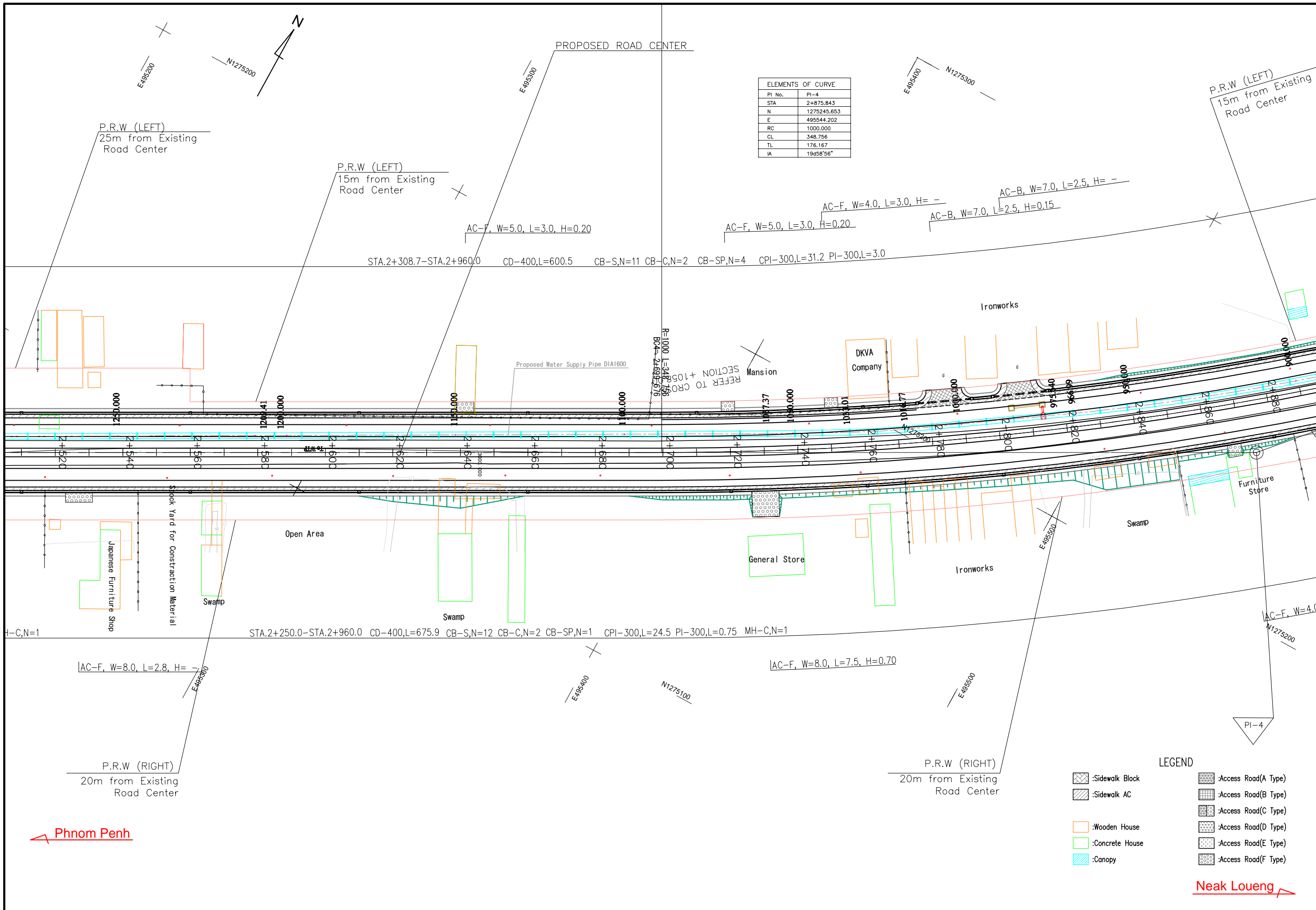
AC-F, W=8.0, L=2.8, H=-

AC-F, W=8.0, L=2.8, H=-

LEGEND

- :Sidewalk Block
- :Sidewalk AC
- :Wooden House
- :Concrete House
- :Canopy
- :Access Road(A Type)
- :Access Road(B Type)
- :Access Road(C Type)
- :Access Road(D Type)
- :Access Road(E Type)
- :Access Road(F Type)

Neak Loueng

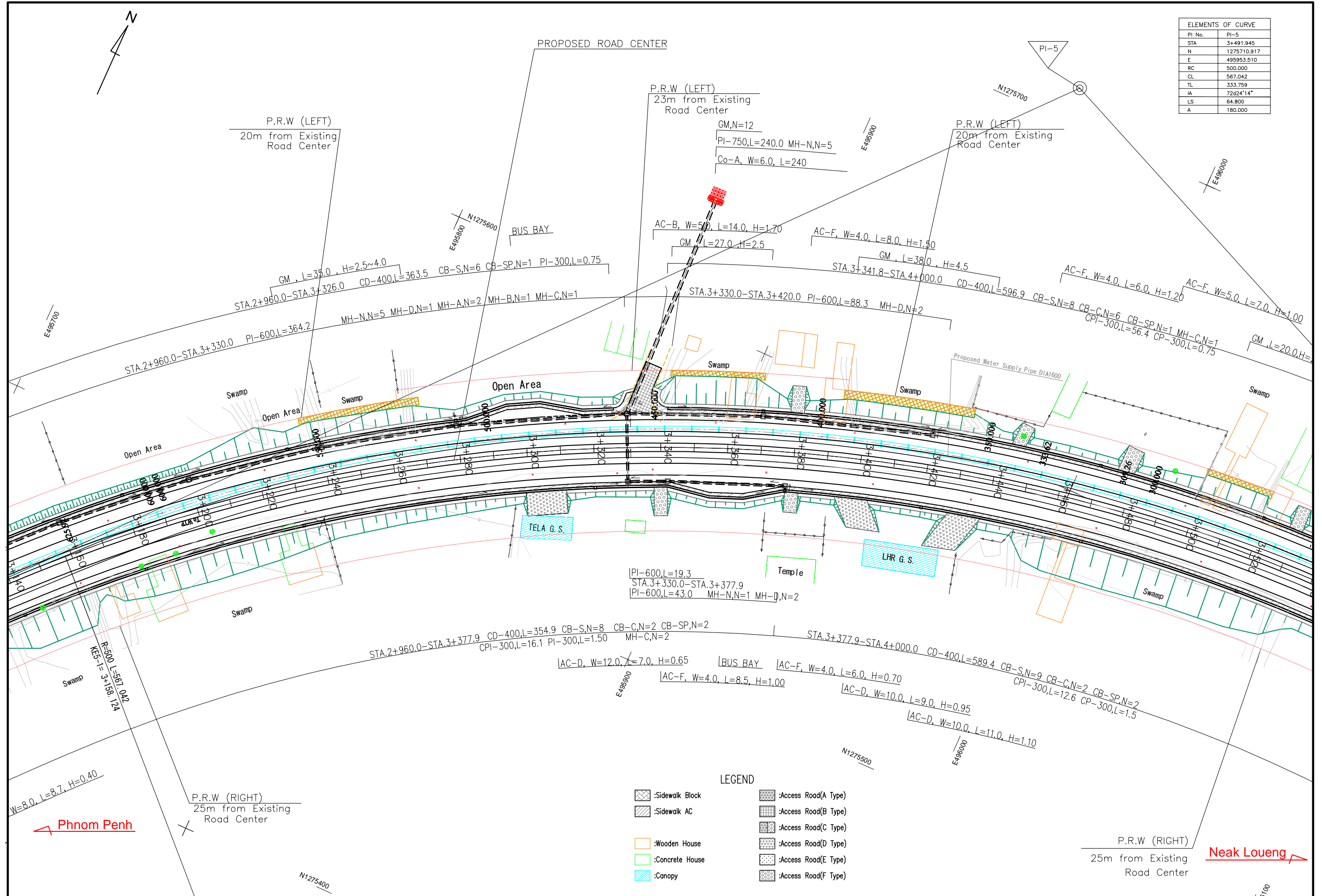


ELEMENTS OF CURVE	
PI No.	PI-4
STA	2+875.843
N	1275245.853
E	495544.202
RC	1000.000
CL	348.756
TL	176.167
IA	19d58°56"

Phnom Penh

Neak Loueng

ELEMENTS OF CURVE	
PI No.	PI-5
STA	3+491.945
N	1275710.917
E	495953.510
RC	500.000
CL	567.042
TL	333.759
IA	7242'14"
LS	64.800
A	180.000



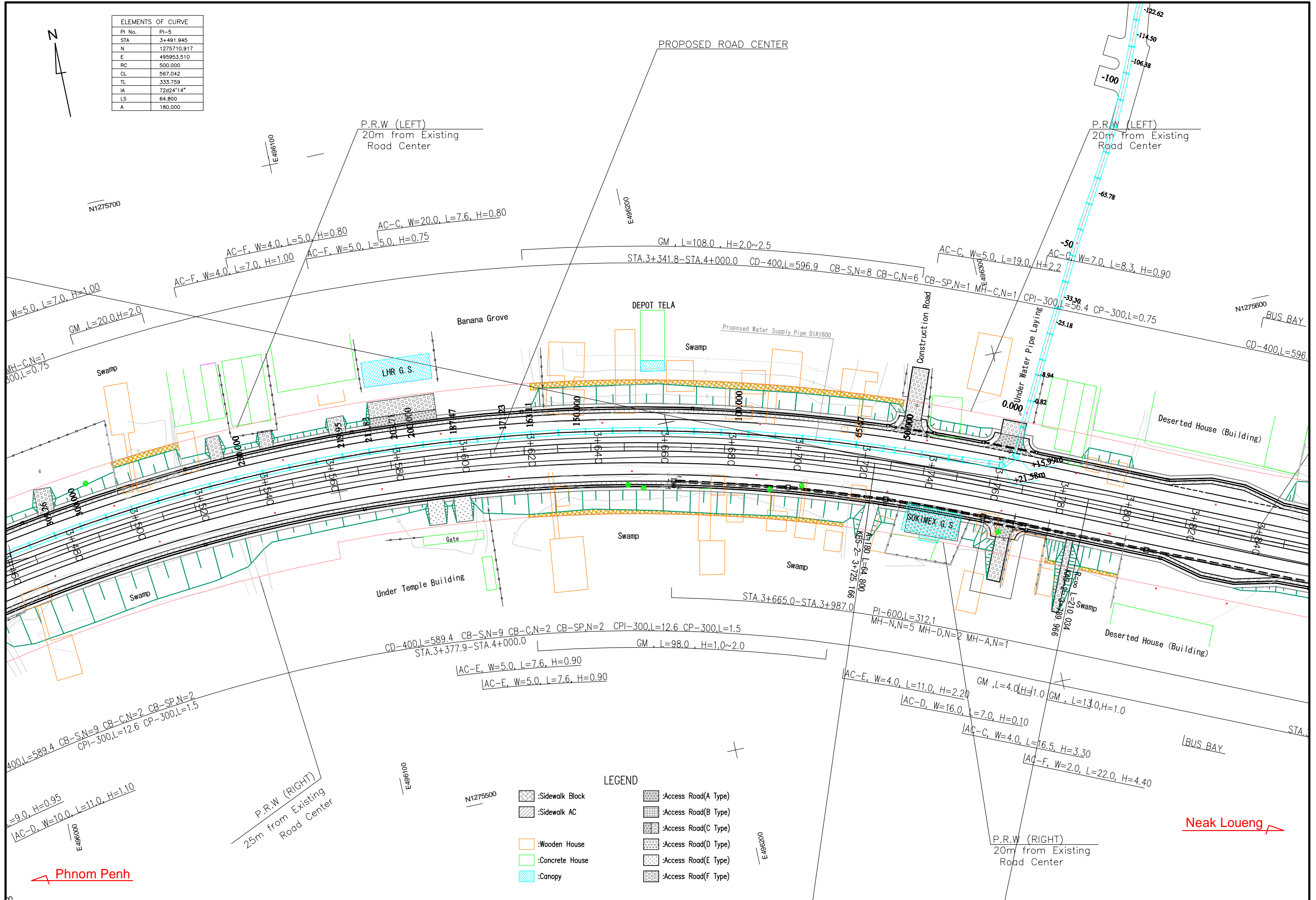
LEGEND

	:Sidewalk Block		:Access Road(A Type)
	:Sidewalk AC		:Access Road(B Type)
	:Wooden House		:Access Road(C Type)
	:Concrete House		:Access Road(D Type)
	:Canopy		:Access Road(E Type)
			:Access Road(F Type)

Phnom Penh

Neak Loueng

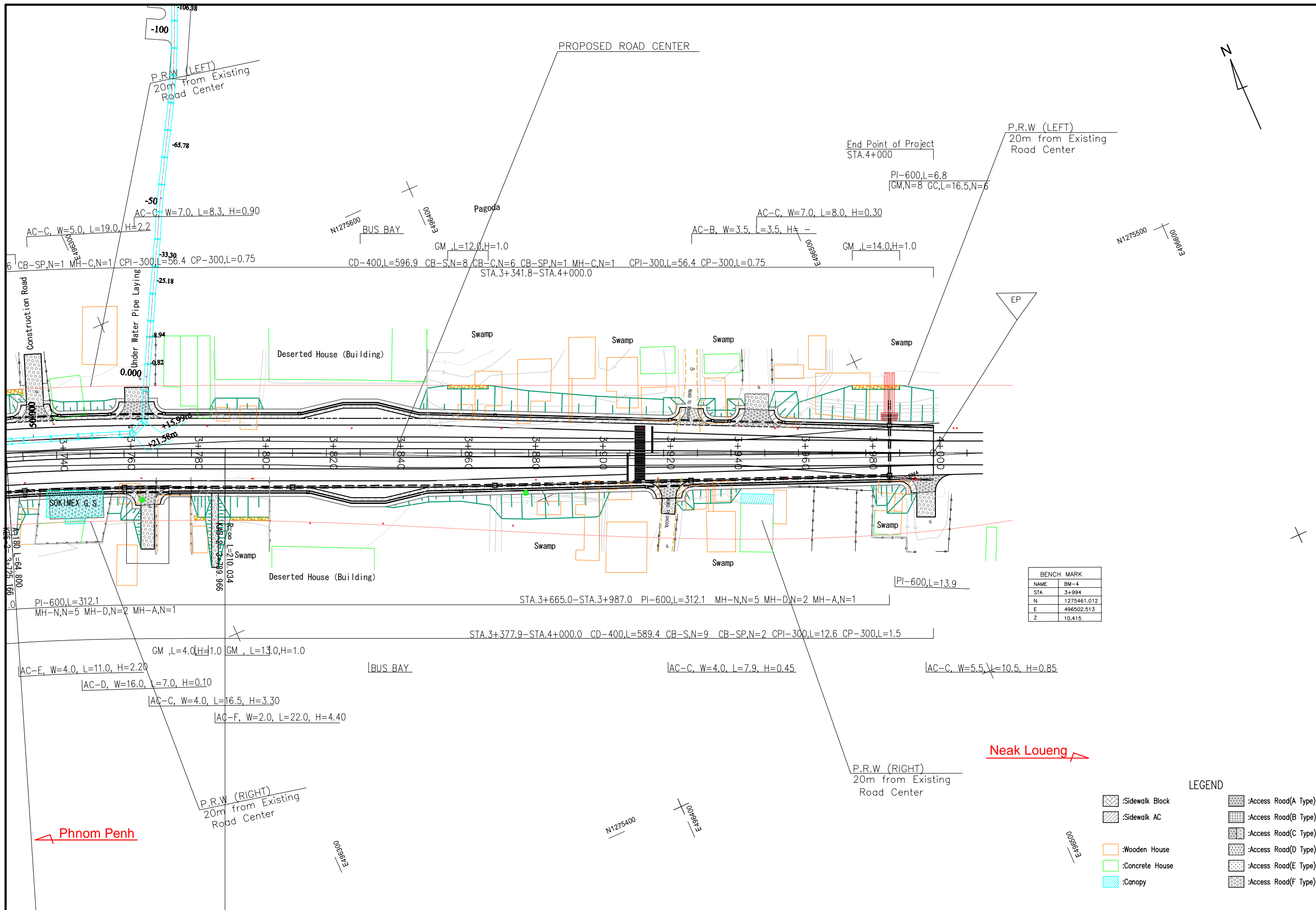
ELEMENTS OF CURVE	
PI No.	PI-5
STA	3+491.945
N	1275710.917
E	495953.510
RC	500.000
CL	567.042
TL	333.759
IA	72d24'14"
LS	64.800
A	180.000



- LEGEND**
- :Sidewalk Block
 - :Sidewalk AC
 - :Wooden House
 - :Concrete House
 - :Canopy
 - :Access Road(A Type)
 - :Access Road(B Type)
 - :Access Road(C Type)
 - :Access Road(D Type)
 - :Access Road(E Type)
 - :Access Road(F Type)

Phnom Penh

Neak Loueng



BENCH MARK	
NAME	BM-4
STA	3+994
N	1275461.012
E	496502.513
Z	10.415

LEGEND			
	:Sidewalk Block		:Access Road(A Type)
	:Sidewalk AC		:Access Road(B Type)
	:Wooden House		:Access Road(C Type)
	:Concrete House		:Access Road(D Type)
	:Canopy		:Access Road(E Type)
			:Access Road(F Type)