

## 資料 10. 概略設計図



PREPARATORY SURVEY  
ON THE PROJECT FOR CONSTRUCTION OF NILE RIVER BRIDGE  
IN THE REPUBLIC OF THE SUDAN

DRAWINGS

JAPAN INTERNATIONAL COOPERATION AGENCY  

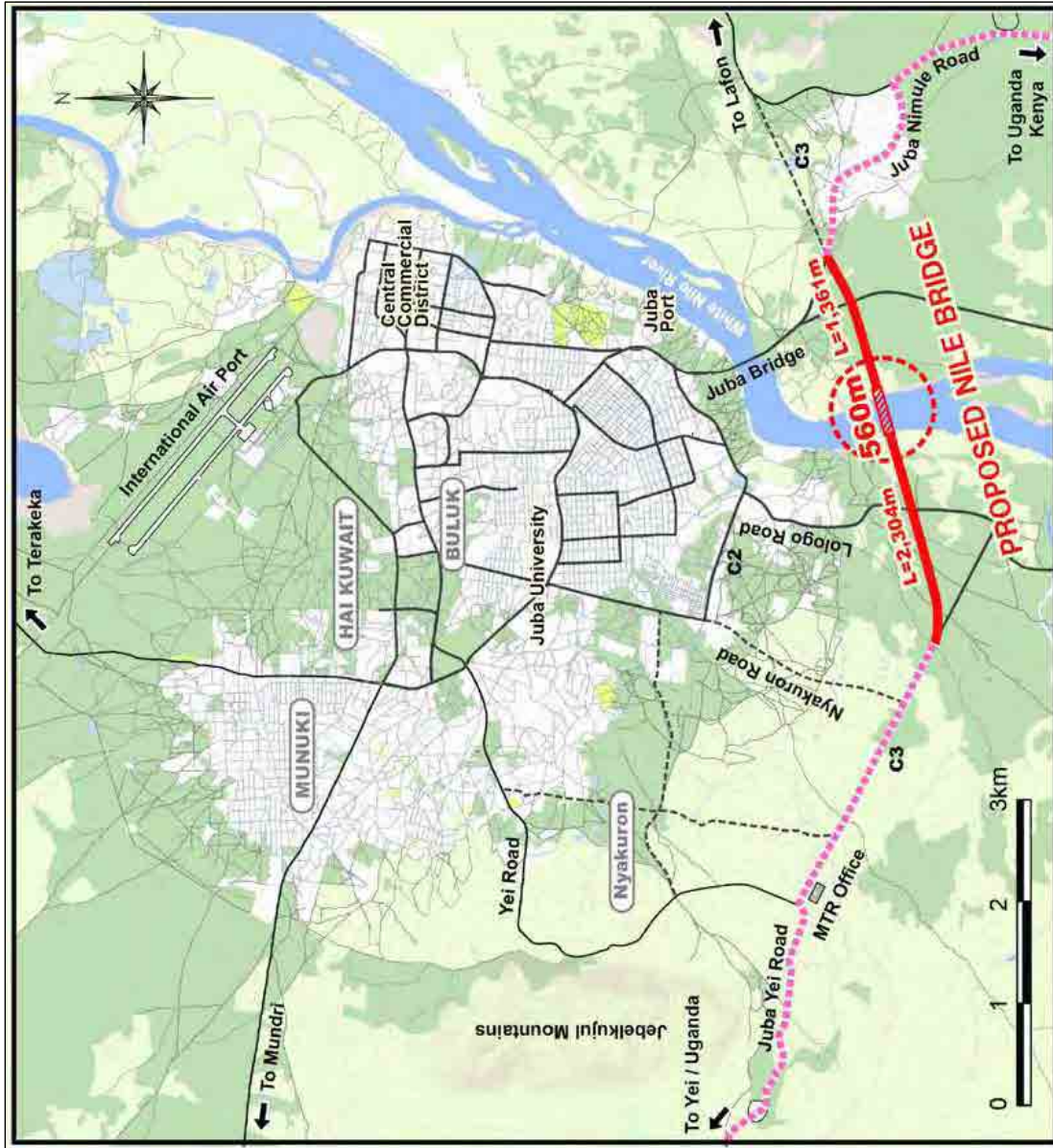
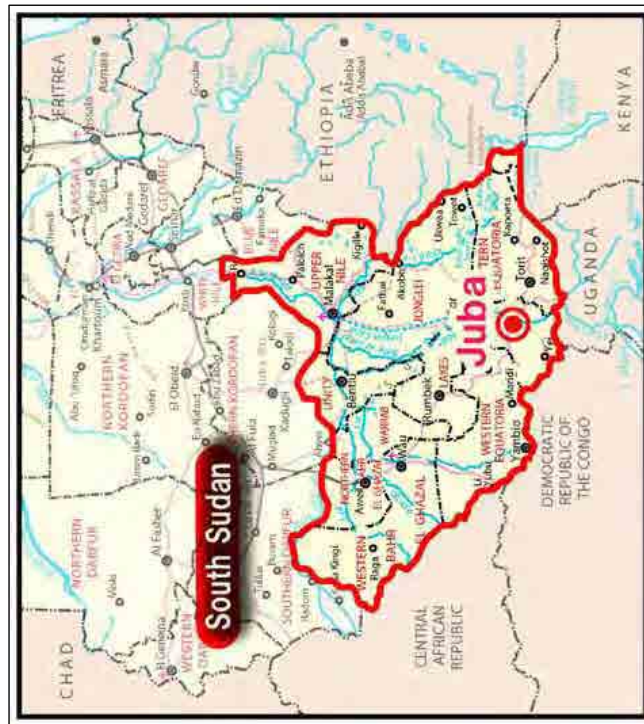
---

CTI ENGINEERING INTERNATIONAL CO., LTD

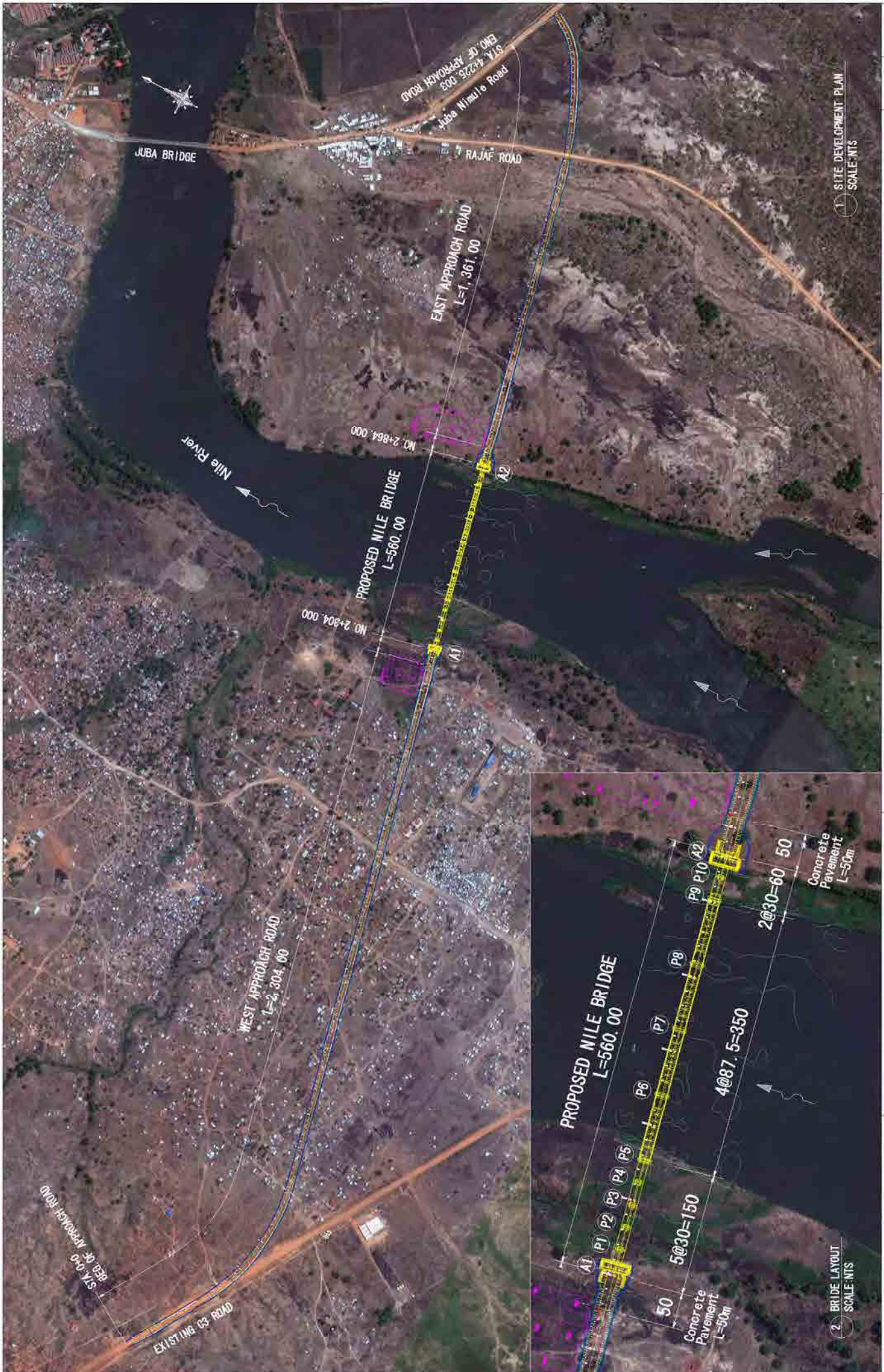
**PREPARATORY SURVEY ON THE PROJECT FOR CONSTRUCTION OF NILE RIVER BRIDGE IN THE REPUBLIC OF THE SUDAN**

**LIST OF DRAWINGS**

<b>Item No.</b>	<b>Drawing Title</b>	<b>No. of Sheets</b>	<b>Drawing No.</b>
1	LOCATION MAP (位置図)	1	NB-01
2	PROJECT SITE DEVELOPMENT PLAN (全体概要図)	1	NB-02
3	HORIZONTAL ALIGNMENT REFERENCE(1)~(3) (取付道路平面線形図)	3	NB-03~05
4	GENERAL PLAN AND PROFILE(1)~(8) (取付道路平面・縦断図)	8	NB-06~13
5	TYPICAL CROSS-SECTION OF APPROACH ROAD (取付道路標準横断図)	1	NB-14
6	GENERAL VIEW OF THE BRIDGE (橋梁一般図)	1	NB-15
7	SUPERSTRUCTURE LAYOUT AND TYPICAL SECTIONS (A1~P5) (橋梁上部工構造図)	1	NB-16
8	SUPERSTRUCTURE LAYOUT AND TYPICAL SECTIONS (P5~P9 LANGHER ARCH) (橋梁上部工構造図)	1	NB-17
9	TYPICAL DETAILS OF SUPERSTRUCTURE FOR P5~P9 (LANGHER ARCH) (橋梁上部工構造図)	1	NB-18
10	SUPERSTRUCTURE LAYOUT AND TYPICAL SECTIONS (P9~A2) (橋梁上部工構造図)	1	NB-19
11	ABUTMENT-A1 LAYOUT AND DIMENSIONS (橋台構造図)	1	NB-20
12	DIMENSION DETAILS FOR PIER-1~PIRE-5 (橋脚構造図)	5	NB-21~25
13	DIMENSION DETAILS FOR PIER-6~PIRE-8 (橋脚構造図)	3	NB-26~28
14	DIMENSION DETAILS FOR PIER-9~PIRE-10 (橋脚構造図)	2	NB-29~30
15	ABUTMENT-A2 LAYOUT AND DIMENSIONS (橋台構造図)	1	NB-31
16	DRAINAGE DETAILS OF APPROACH ROAD (1)~(7) (取付道路排水構造図)	7	NB-32~38
17	DRAWINGS FOR CONCRETE PAVEMENT CONSTRUCTION(1)~(2) (コンクリート舗装構造図)	2	NB-39~40
18	ANCILLARY STRUCTURE(1)~(2) (取付道路施設工図)	2	NB-41~42
19	SLOPE PROTECTION LAYOUT AND DETAILS (1)~(2) (護岸工構造図)	2	NB-43~44

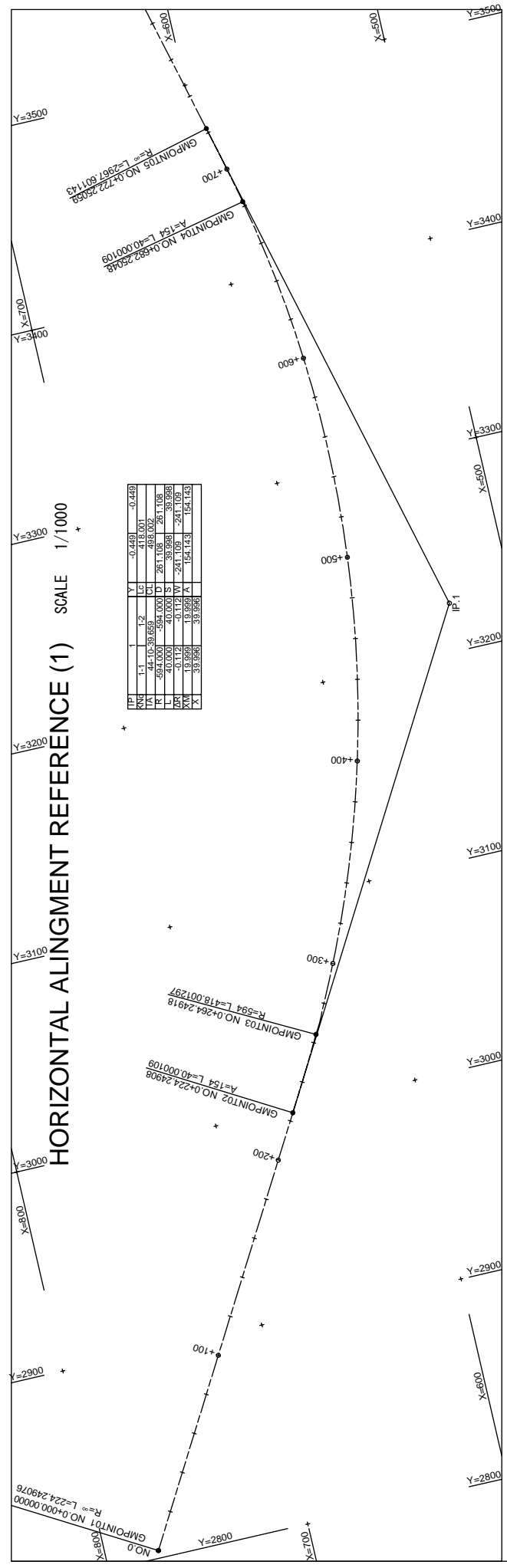


MINISTRY OF TRANSPORT AND ROADS GOVERNMENT OF SOUTHERN SUDAN	PRELIMINARY SURVEY FOR THE PROJECT FOR CONSTRUCTION OF NILE RIVER BRIDGE IN SOUTHERN SUDAN	JAPAN INTERNATIONAL COOPERATION AGENCY CTI ENGINEERING INTERNATIONAL CO., LTD. EIGHT-JAPAN ENGINEERING CONSULTANTS INC.	TITLE:	LOCATION MAP
			SCALE	H=1/5000
			SHEET NO.	NO-01
			DATE	OCT 2011

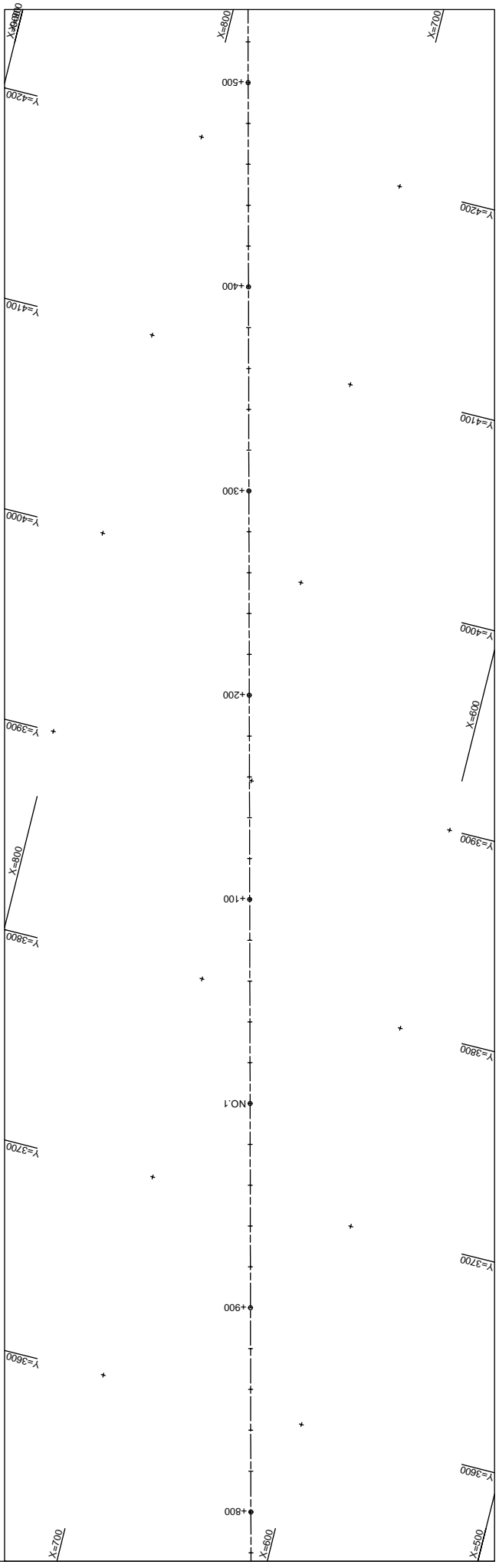


<p><b>PROJECT SITE DEVELOPMENT PLAN</b></p> <p>SCALE: 1:5000</p> <p>DATE: OCT 2011</p>	<p><b>TITLE:</b></p> <p>JAPAN INTERNATIONAL COOPERATION AGENCY          CTI ENGINEERING INTERNATIONAL CO., LTD.          EIGHT-JAPAN ENGINEERING CONSULTANTS INC.</p>	<p><b>PRELIMINARY SURVEY FOR THE PROJECT FOR CONSTRUCTION OF NILE RIVER BRIDGE IN SOUTHERN SUDAN</b></p>	<p><b>MINISTRY OF TRANSPORT AND ROADS          GOVERNMENT OF SOUTHERN SUDAN</b></p>
--	---	--	---

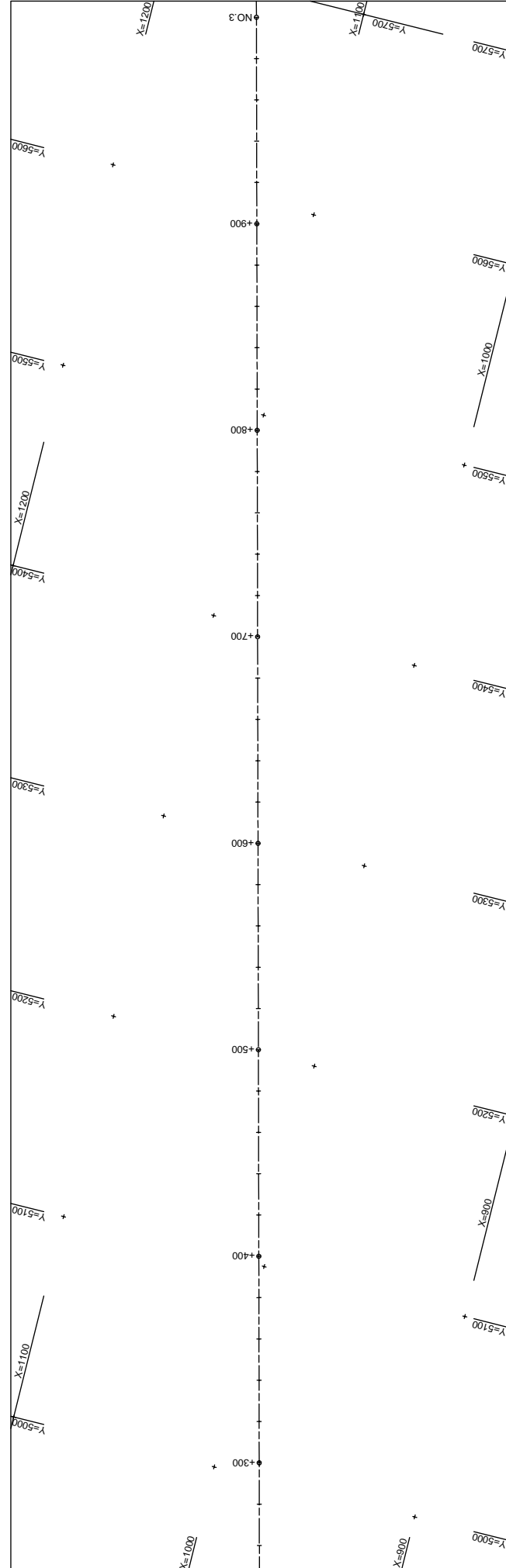
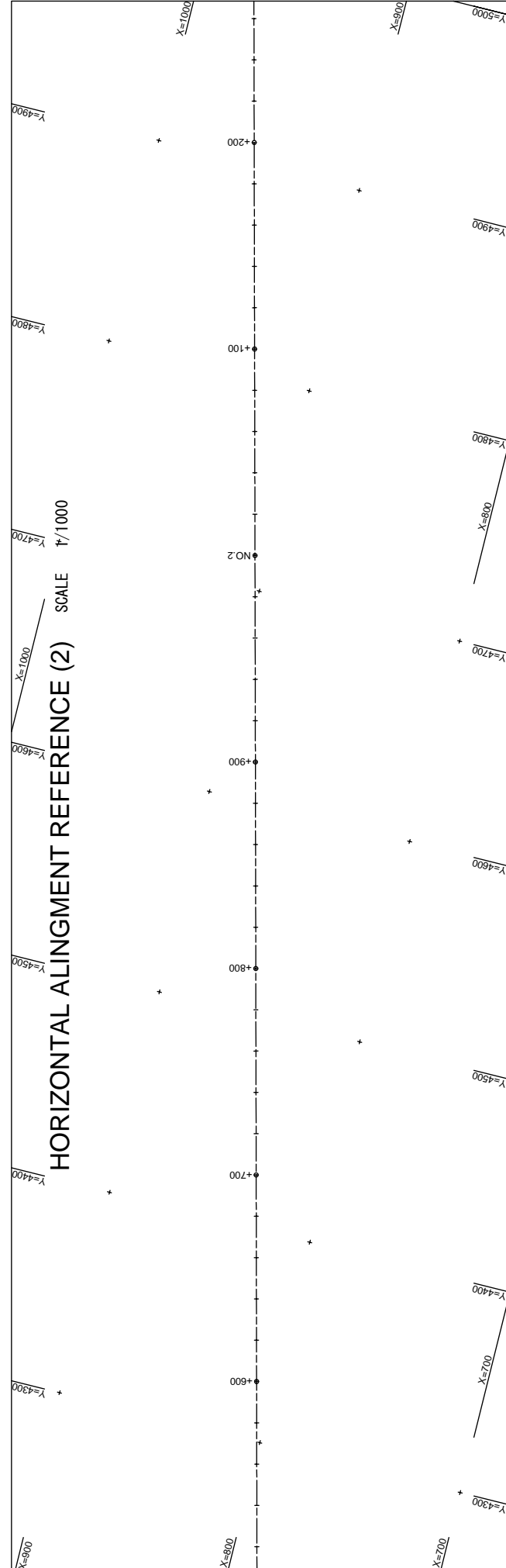
# HORIZONTAL ALIGNMENT REFERENCE (1) SCALE 1/1000



Station	0+000	0+100	0+200	0+300	0+400	0+500	0+600	0+700
X	33.886	33.886	33.886	33.886	33.886	33.886	33.886	33.886
Y	19.826	19.826	19.826	19.826	19.826	19.826	19.826	19.826
Z	26.108	26.108	26.108	26.108	26.108	26.108	26.108	26.108
D	40.000	40.000	40.000	40.000	40.000	40.000	40.000	40.000
S	44.10	44.10	44.10	44.10	44.10	44.10	44.10	44.10
C	488.002	488.002	488.002	488.002	488.002	488.002	488.002	488.002
A	1.1	1.2	1.2	1.2	1.2	1.2	1.2	1.2
L	0.449	0.449	0.449	0.449	0.449	0.449	0.449	0.449
D	40.000	40.000	40.000	40.000	40.000	40.000	40.000	40.000



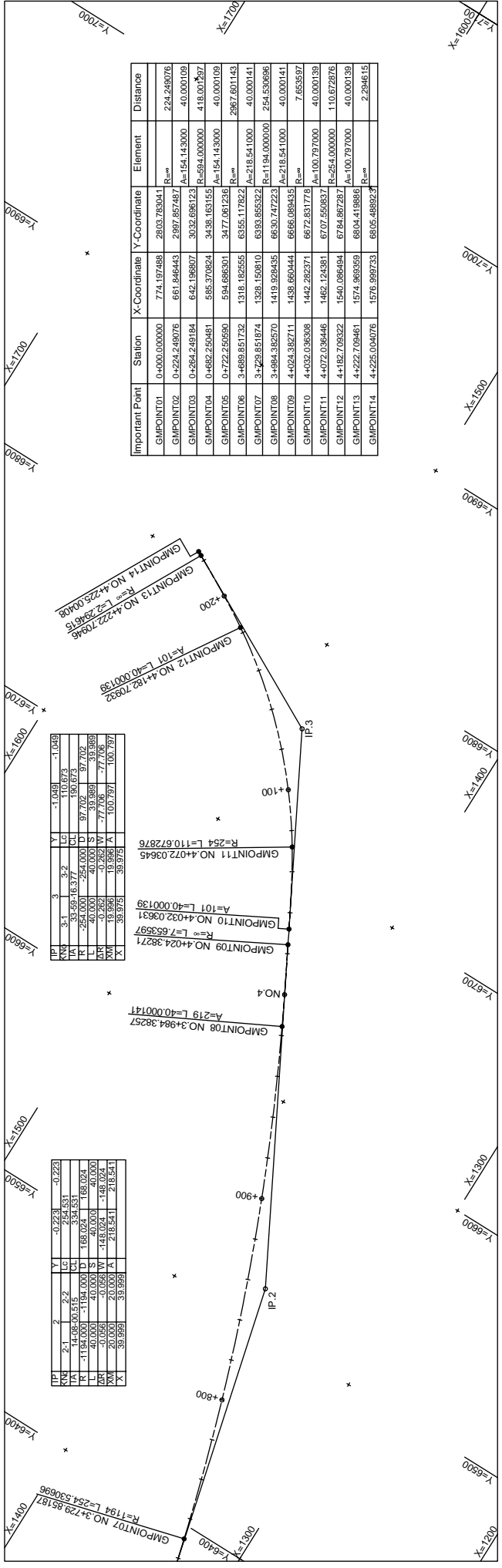
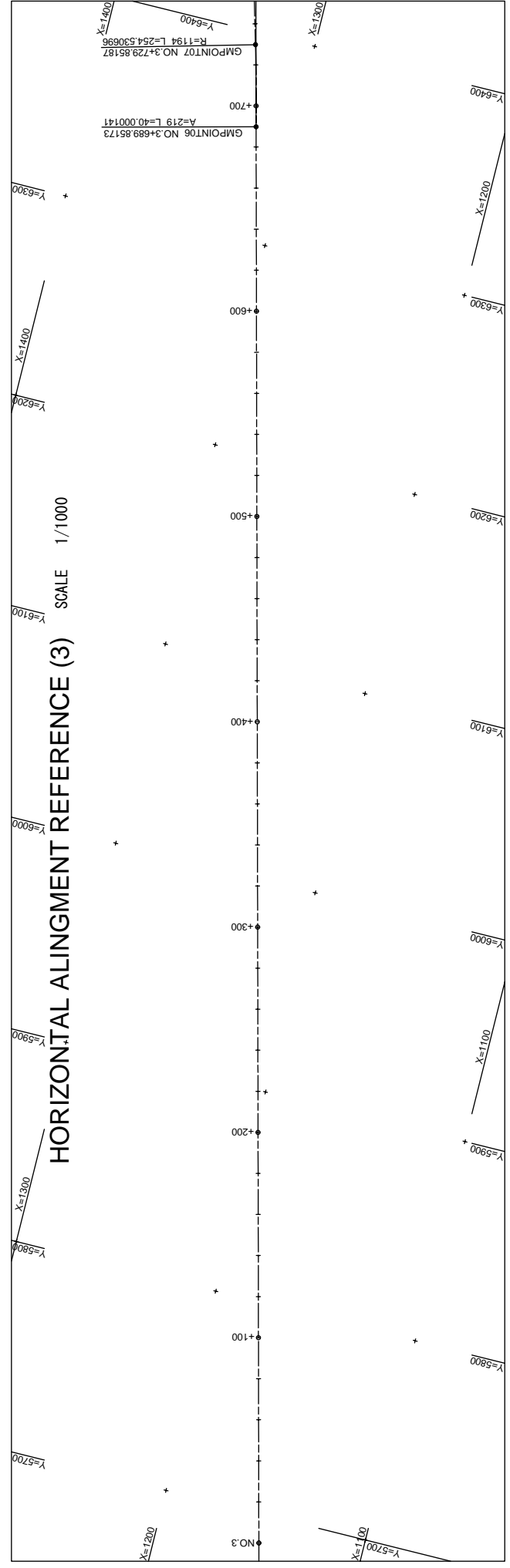
HORIZONTAL ALIGNMENT REFERENCE (1)	SCALE	1/1000	SHEET NO.	NE:03
	DATE	OCT 2011		
TITLE: JAPAN INTERNATIONAL COOPERATION AGENCY CTI ENGINEERING INTERNATIONAL CO., LTD. EIGHT-JAPAN ENGINEERING CONSULTANTS INC.				
PRELIMINARY SURVEY FOR THE PROJECT FOR CONSTRUCTION OF NILE RIVER BRIDGE IN SOUTHERN SUDAN				
MINISTRY OF TRANSPORT AND ROADS GOVERNMENT OF SOUTHERN SUDAN				



HORIZONTAL ALIGNMENT REFERENCE (2)	SCALE	1/1000	SHEET NO.	NE-04
	DATE	OCT 2011		
JAPAN INTERNATIONAL COOPERATION AGENCY CTI ENGINEERING INTERNATIONAL CO., LTD. EIGHT-JAPAN ENGINEERING CONSULTANTS INC.	TITLE: HORIZONTAL ALIGNMENT REFERENCE (2)			
PRELIMINARY SURVEY FOR THE PROJECT FOR CONSTRUCTION OF NILE RIVER BRIDGE IN SOUTHERN SUDAN				
MINISTRY OF TRANSPORT AND ROADS GOVERNMENT OF SOUTHERN SUDAN				

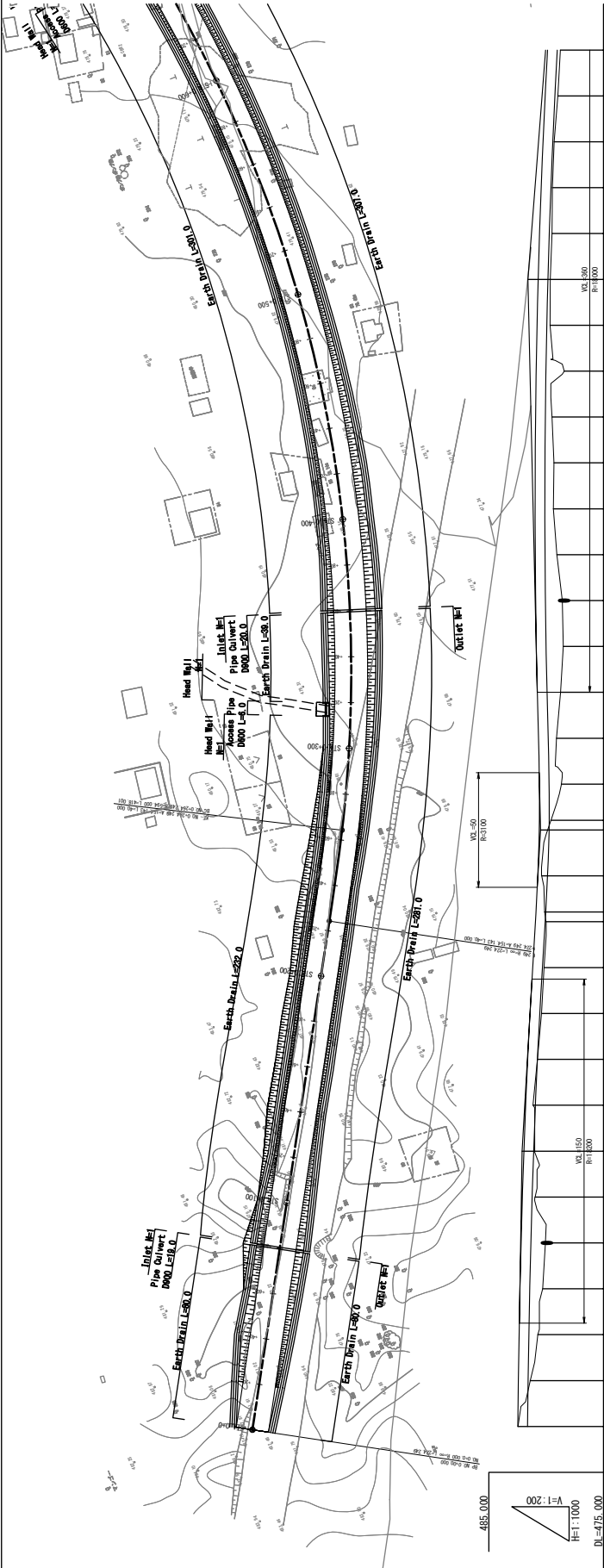


# HORIZONTAL ALIGNMENT REFERENCE (3) SCALE 1/1000



Important Point	Station	X-Coordinate	Y-Coordinate	Element	Distance
GMPOINT01	0+000.000000	774.197488	2603.763041	R=∞	224.249076
GMPOINT02	0+224.249076	661.846443	2397.857487	A=154.143000	40.000109
GMPOINT03	0+264.249184	642.196807	3032.696123	R=894.000000	418.001297
GMPOINT04	0+682.252481	585.378624	3438.163153	A=154.143000	40.000109
GMPOINT05	0+722.252590	594.896301	3477.061236	R=∞	2867.601143
GMPOINT06	3+428.851874	1328.150810	6333.855322	A=218.541000	40.000141
GMPOINT07	3+894.392570	1419.928435	6630.747223	R=1184.000000	254.530696
GMPOINT08	4+024.382711	1438.660444	6666.089435	A=218.541000	40.000141
GMPOINT09	4+032.036398	1462.124391	6707.569357	R=∞	7.658587
GMPOINT10	4+072.036446	1442.282371	6672.831776	A=100.797000	40.000139
GMPOINT11	4+072.036446	1462.124391	6707.569357	R=254.000000	110.672876
GMPOINT12	4+182.709322	1540.086494	6784.867297	A=∞	40.000139
GMPOINT13	4+222.709461	1574.968359	6804.419865	A=∞	2.294615
GMPOINT14	4+225.004076	1576.999733	6805.488923	R=∞	

HORIZONTAL ALIGNMENT REFERENCE (3) SCALE 1/1000	HORIZONTAL ALIGNMENT REFERENCE (3)	SHEET NO. 11/000
TITLE: JAPAN INTERNATIONAL COOPERATION AGENCY CTI ENGINEERING INTERNATIONAL CO., LTD. EIGHT-JAPAN ENGINEERING CONSULTANTS INC.		
MINISTRY OF TRANSPORT AND ROADS GOVERNMENT OF SOUTHERN SUDAN	PRELIMINARY SURVEY FOR THE PROJECT FOR CONSTRUCTION OF NILE RIVER BRIDGE IN SOUTHERN SUDAN	DATE OCT 2011



Station	Slope (FPH)	F	P	H	Slope (PH)	P	H	Existing Level	Setting Height	Filling Height	Accumulative Length	Distance
0+00								482.480				0.000
0+20								481.390			20.000	20.000
0+40								481.503			40.000	40.000
0+60								480.307			60.000	60.000
0+80								481.343			80.000	80.000
1+00								480.972			100.000	100.000
1+20								481.000			120.000	120.000
1+40								481.145			140.000	140.000
1+60								480.766			160.000	160.000
1+80								480.417			180.000	180.000
2+00								480.188			200.000	200.000
2+20								480.017			220.000	220.000
2+40								480.137			240.000	240.000
2+60								479.594			260.000	260.000
2+80								479.594			280.000	280.000
3+00								479.100			300.000	300.000
3+20								478.746			320.000	320.000
3+40								478.517			340.000	340.000
3+60								478.590			360.000	360.000
3+80								479.056			380.000	380.000
4+00								479.366			400.000	400.000
4+20								479.333			420.000	420.000
4+40								479.497			440.000	440.000
4+60								478.428			460.000	460.000
4+80								479.666			480.000	480.000
5+00								479.644			500.000	500.000
5+20								479.733			520.000	520.000
5+40								479.463			540.000	540.000
5+60								479.425			560.000	560.000
5+80								479.200			580.000	580.000
6+00								479.030			600.000	600.000
6+12								479.758			612.000	612.000

MINISTRY OF TRANSPORT AND ROADS  
GOVERNMENT OF SOUTHERN SUDAN

PRELIMINARY SURVEY FOR THE PROJECT FOR  
CONSTRUCTION OF NILE RIVER BRIDGE  
IN SOUTHERN SUDAN

JAPAN INTERNATIONAL COOPERATION AGENCY  
CTI ENGINEERING INTERNATIONAL CO., LTD.  
EIGHT-JAPAN ENGINEERING CONSULTANTS INC.

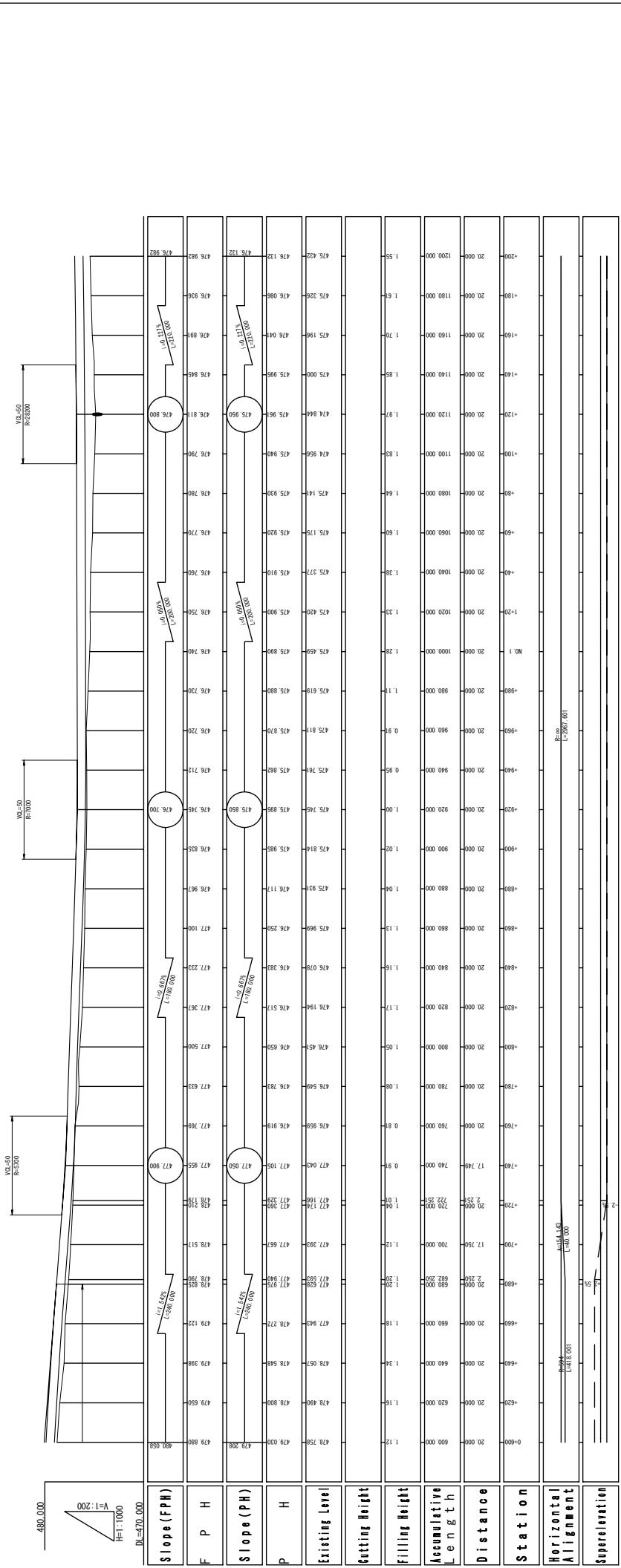
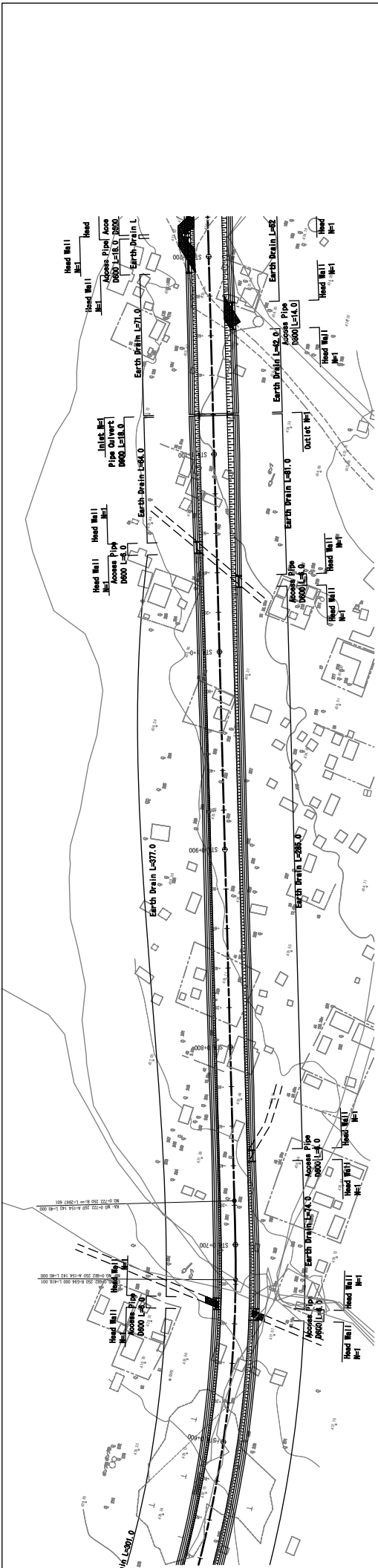
General Plan And Profile (1)

TITLE:

SCALE  
V=1:200  
H=1:1000

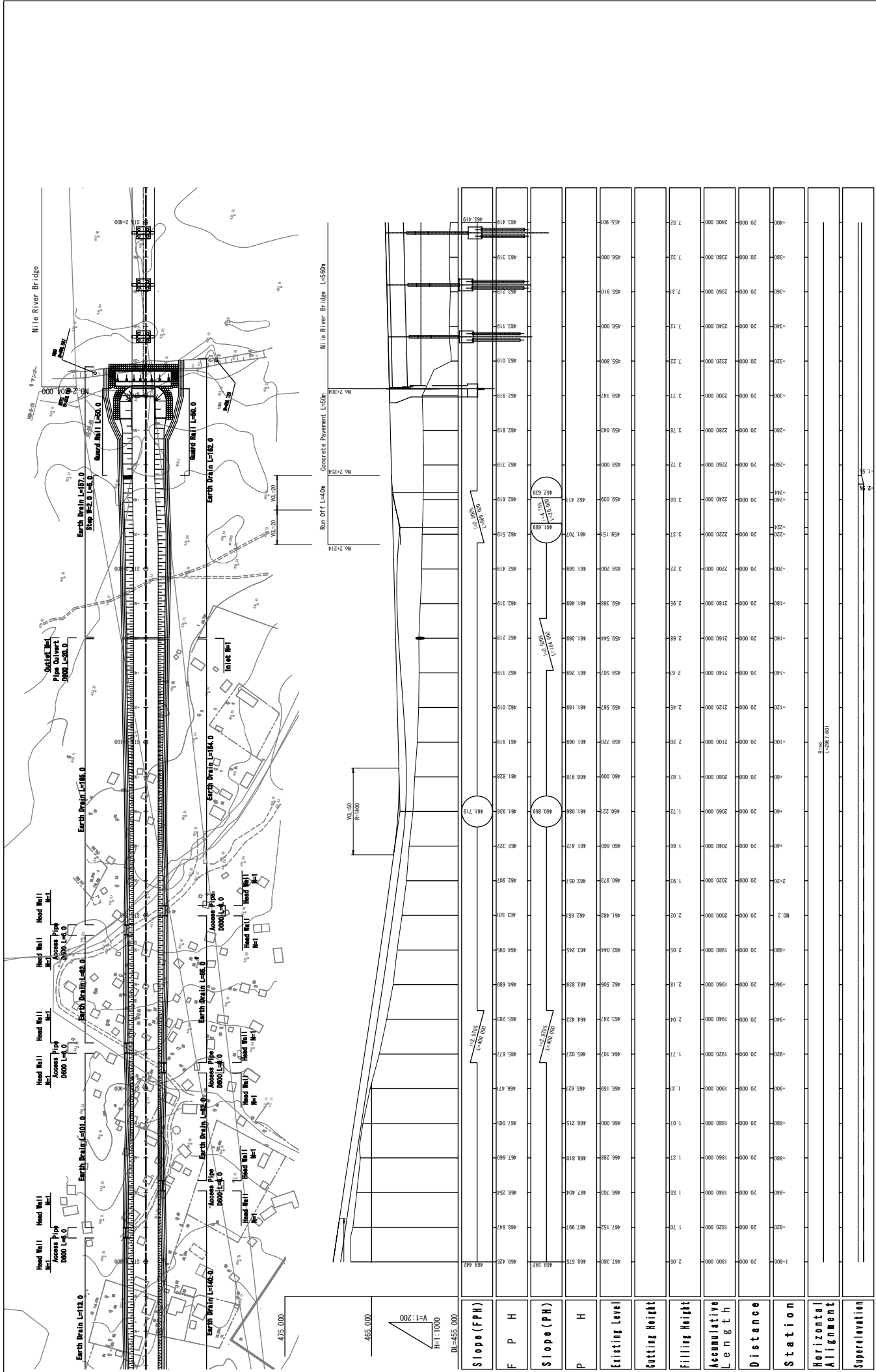
SHEET NO.  
NB-06

DATE  
OCT 2011



Scale		Sheet No.	
Vertical	1:200	Horizontal	1:1000
DATE		OCT 2011	
General Plan And Profile (2)			
TITLE:		JAPAN INTERNATIONAL COOPERATION AGENCY CTI ENGINEERING INTERNATIONAL CO., LTD. EIGHT-JAPAN ENGINEERING CONSULTANTS INC.	
MINISTRY OF TRANSPORT AND ROADS GOVERNMENT OF SOUTHERN SUDAN		PRELIMINARY SURVEY FOR THE PROJECT FOR CONSTRUCTION OF NILE RIVER BRIDGE IN SOUTHERN SUDAN	





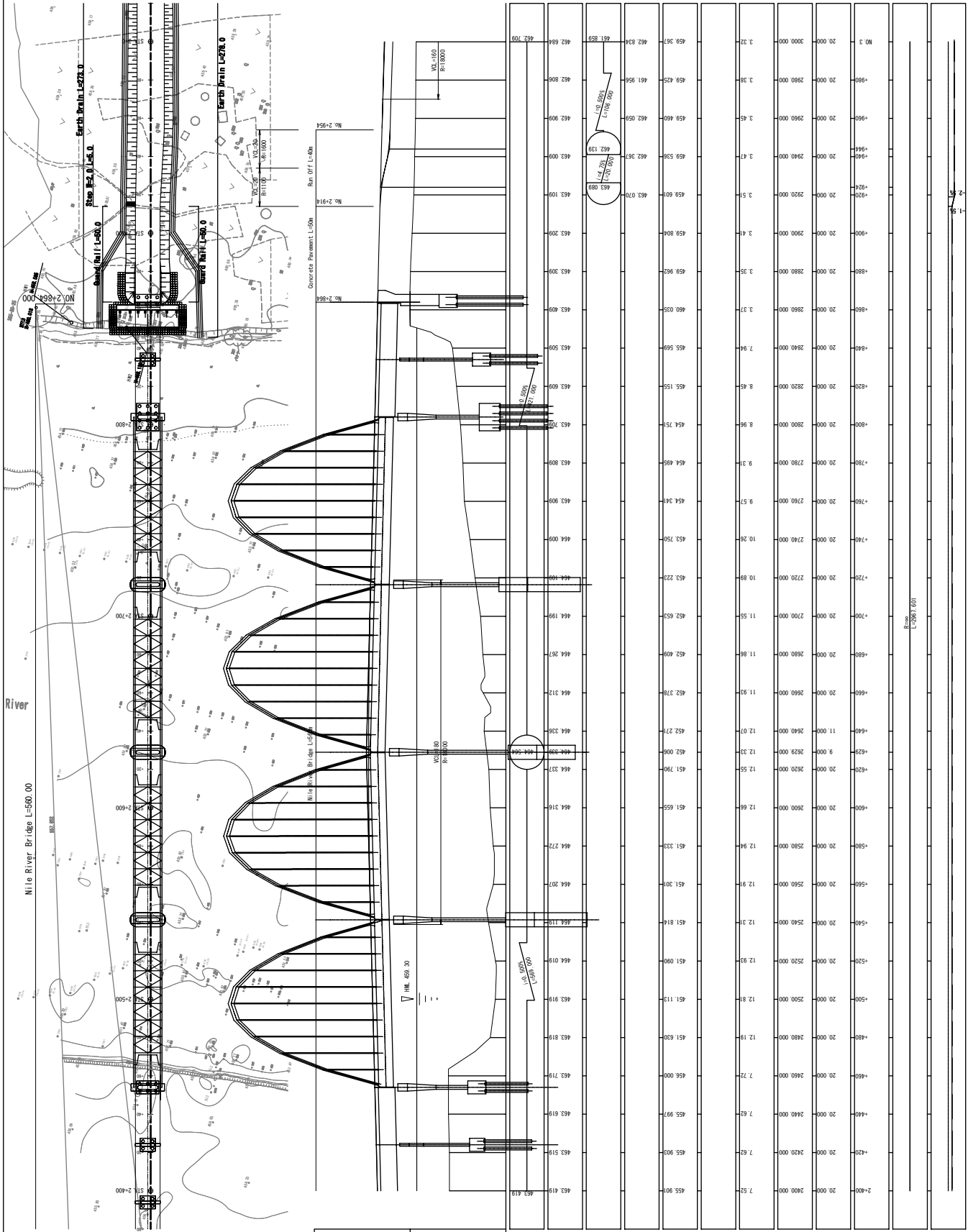
MINISTRY OF TRANSPORT AND ROADS  
GOVERNMENT OF SOUTHERN SUDAN

PRELIMINARY SURVEY FOR THE PROJECT FOR  
CONSTRUCTION OF NILE RIVER BRIDGE  
IN SOUTHERN SUDAN

JAPAN INTERNATIONAL COOPERATION AGENCY  
CTI ENGINEERING INTERNATIONAL CO., LTD.  
EIGHT-JAPAN ENGINEERING CONSULTANTS INC.

General Plan And Profile (4)

SHEET NO.  
SCALE  
V=1/200  
H=1/1000  
DATE  
NB-09  
OCT 2011



Slope (FPH)	F	P	H	Slope (PH)	P	H	Existing Level	Setting Height	Filling Height	Accumulative Length	Distance	Station	Horizontal Alignment	Superelevation
	467.700	467.834	467.968		455.900	7.52	2400.000	7.62		2420.000	20.000	+420		
	462.858	461.956	461.054		455.970	7.62	2440.000	7.62		2440.000	20.000	+440		
	462.808	462.932	463.056		458.000	7.72	2460.000	7.72		2460.000	20.000	+460		
	463.100	463.224	463.348		451.110	12.81	2500.000	12.81		2500.000	20.000	+500		
	463.200	463.324	463.448		451.090	12.92	2520.000	12.92		2520.000	20.000	+520		
	463.300	463.424	463.548		451.814	12.31	2540.000	12.31		2540.000	20.000	+540		
	463.400	463.524	463.648		451.790	12.55	2620.000	12.55		2620.000	20.000	+620		
	463.500	463.624	463.748		452.000	12.33	2620.000	12.33		2620.000	20.000	+620		
	463.600	463.724	463.848		452.271	12.07	2640.000	12.07		2640.000	11.000	+640		
	463.700	463.824	463.948		452.378	11.93	2660.000	11.93		2660.000	20.000	+660		
	463.800	463.924	464.048		452.409	11.86	2680.000	11.86		2680.000	20.000	+680		
	463.900	464.024	464.148		452.650	11.55	2700.000	11.55		2700.000	20.000	+700		
	464.000	464.124	464.248		452.720	10.89	2720.000	10.89		2720.000	20.000	+720		
	464.100	464.224	464.348		454.341	9.51	2760.000	9.51		2760.000	20.000	+760		
	464.200	464.324	464.448		454.495	9.31	2780.000	9.31		2780.000	20.000	+780		
	464.300	464.424	464.548		454.750	10.26	2740.000	10.26		2740.000	20.000	+740		
	464.400	464.524	464.648		454.950	8.96	2800.000	8.96		2800.000	20.000	+800		
	464.500	464.624	464.748		455.155	8.45	2820.000	8.45		2820.000	20.000	+820		
	464.600	464.724	464.848		455.599	7.94	2840.000	7.94		2840.000	20.000	+840		
	464.700	464.824	464.948		460.030	3.37	2860.000	3.37		2860.000	20.000	+860		
	464.800	464.924	465.048		459.960	3.35	2880.000	3.35		2880.000	20.000	+880		
	464.900	465.024	465.148		459.904	2.41	2900.000	2.41		2900.000	20.000	+900		
	465.000	465.124	465.248		459.400	2.45	2960.000	2.45		2960.000	20.000	+960		
	465.100	465.224	465.348		459.425	3.38	2980.000	3.38		2980.000	20.000	+980		
	465.200	465.324	465.448		459.361	3.32	3000.000	3.32		3000.000	20.000	+1000		

MINISTRY OF TRANSPORT AND ROADS  
GOVERNMENT OF SOUTHERN SUDAN

PRELIMINARY SURVEY FOR THE PROJECT FOR  
CONSTRUCTION OF NILE RIVER BRIDGE  
IN SOUTHERN SUDAN

JAPAN INTERNATIONAL COOPERATION AGENCY  
CTI ENGINEERING INTERNATIONAL CO., LTD.  
EIGHT-JAPAN ENGINEERING CONSULTANTS INC.

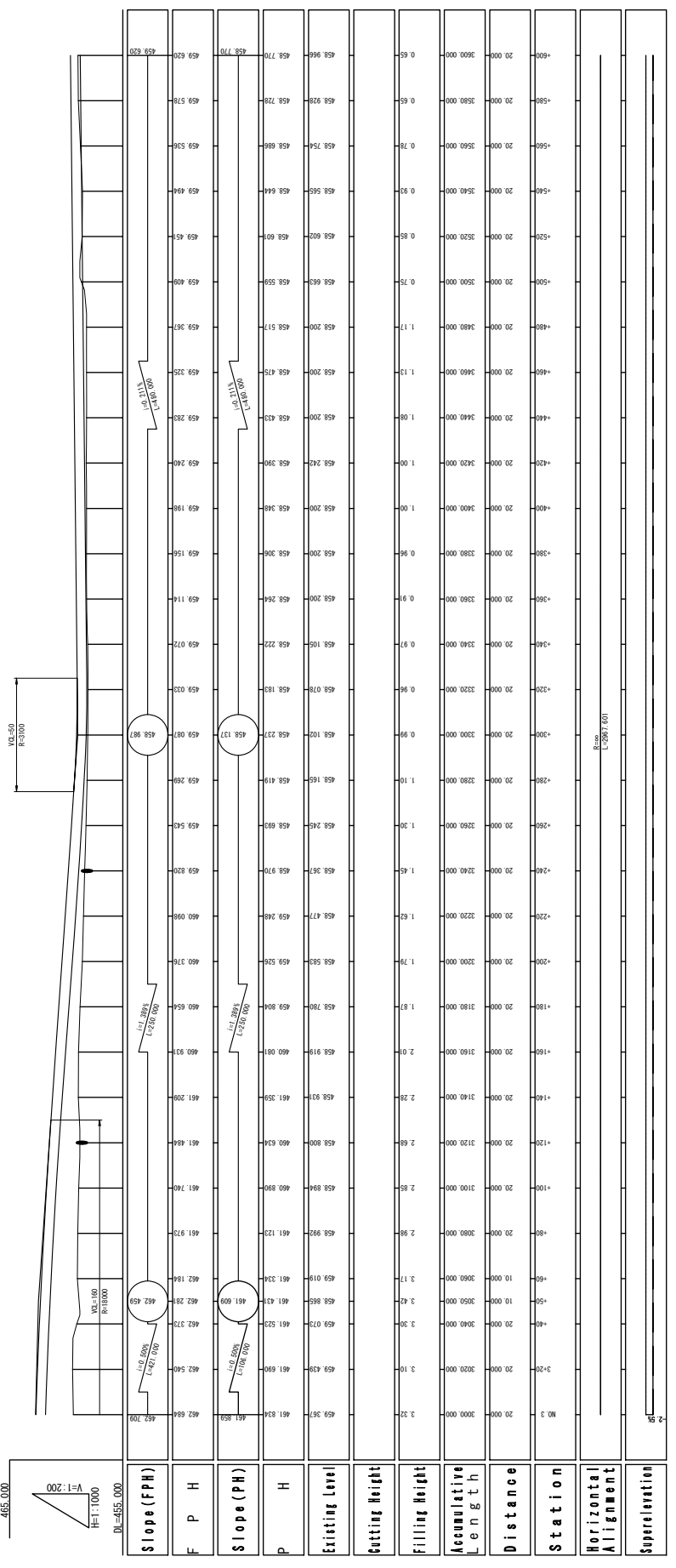
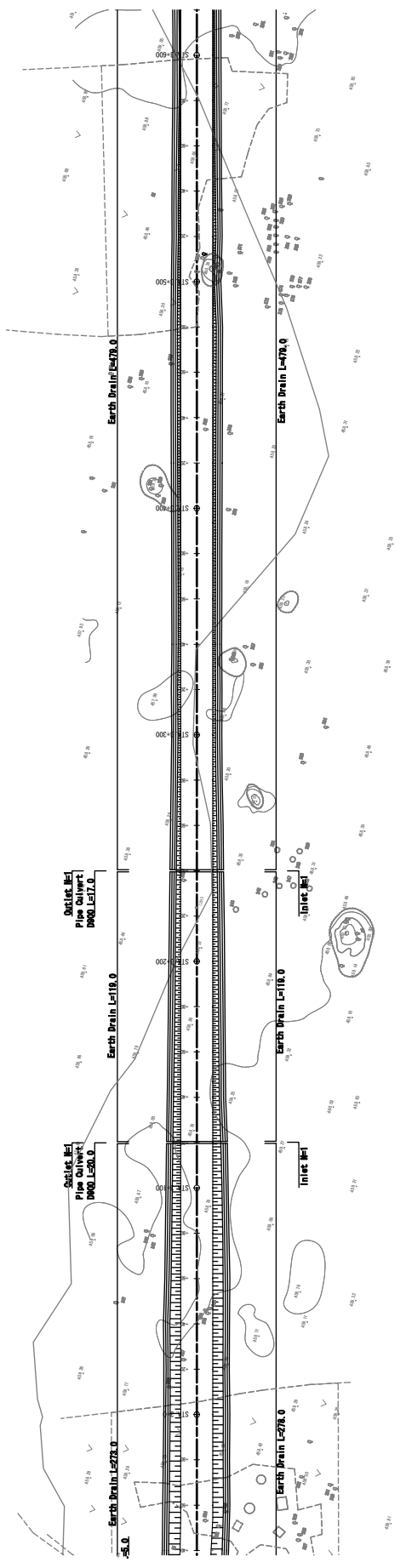
General Plan And Profile (5)

TITLE:

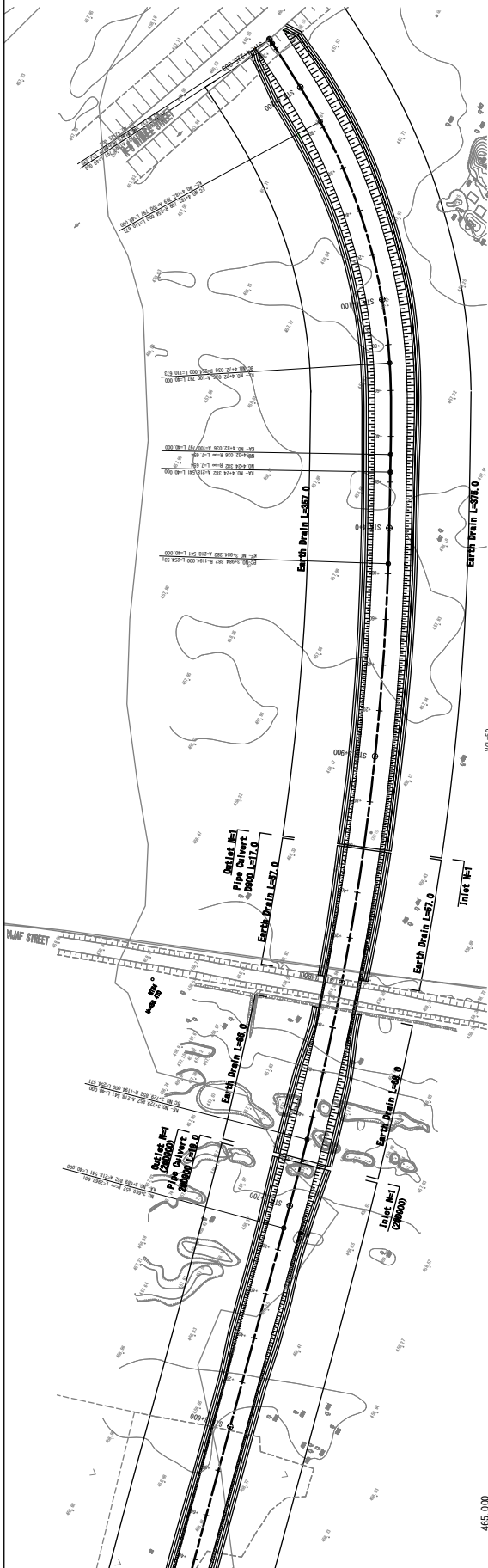
SCALE  
V=1/200  
H=1/1000

SHEET NO.  
NB-10

DATE  
OCT 2011



Station	Existing Level	Setting Height	Filling Height	Accumulative Length	Distance	Station
465.000	459.367	3.32	3000.000	3000.000	465.000	465.000
465.200	459.350	3.10	3020.000	3020.000	465.200	465.200
465.400	461.690	3.30	3040.000	3040.000	465.400	465.400
465.600	461.523	3.42	3050.000	3050.000	465.600	465.600
465.800	460.634	2.68	3120.000	3120.000	465.800	465.800
466.000	460.890	2.85	3100.000	3100.000	466.000	466.000
466.200	461.123	2.98	3080.000	3080.000	466.200	466.200
466.400	461.970	2.85	3100.000	3100.000	466.400	466.400
466.600	461.740	2.68	3120.000	3120.000	466.600	466.600
466.800	461.494	2.68	3120.000	3120.000	466.800	466.800
467.000	461.298	2.28	3140.000	3140.000	467.000	467.000
467.200	460.881	2.01	3160.000	3160.000	467.200	467.200
467.400	460.800	1.81	3180.000	3180.000	467.400	467.400
467.600	459.904	1.79	3200.000	3200.000	467.600	467.600
467.800	459.526	1.62	3220.000	3220.000	467.800	467.800
468.000	459.248	1.52	3240.000	3240.000	468.000	468.000
468.200	458.970	1.45	3240.000	3240.000	468.200	468.200
468.400	458.245	1.30	3260.000	3260.000	468.400	468.400
468.600	458.693	1.10	3280.000	3280.000	468.600	468.600
468.800	458.419	1.10	3280.000	3280.000	468.800	468.800
469.000	458.102	0.99	3300.000	3300.000	469.000	469.000
469.200	458.078	0.96	3320.000	3320.000	469.200	469.200
469.400	458.183	0.96	3320.000	3320.000	469.400	469.400
469.600	458.200	0.96	3380.000	3380.000	469.600	469.600
469.800	458.200	1.00	3400.000	3400.000	469.800	469.800
470.000	458.240	1.00	3420.000	3420.000	470.000	470.000
470.200	458.390	1.08	3440.000	3440.000	470.200	470.200
470.400	458.423	1.13	3460.000	3460.000	470.400	470.400
470.600	458.475	1.17	3480.000	3480.000	470.600	470.600
470.800	458.517	0.75	3500.000	3500.000	470.800	470.800
471.000	458.559	0.85	3520.000	3520.000	471.000	471.000
471.200	458.602	0.93	3540.000	3540.000	471.200	471.200
471.400	458.644	0.78	3560.000	3560.000	471.400	471.400
471.600	458.686	0.65	3580.000	3580.000	471.600	471.600
471.800	458.728	0.65	3600.000	3600.000	471.800	471.800
472.000	458.770	0.65			472.000	472.000



Station	Slope (FPH)	F	P	Slope (PH)	P	Existing Level	Setting Height	Filling Height	Accumulative Length	Distance	Station
459.000	1:1	0.00	0.00	1:1	0.00	459.000	1.34	1.34	0.00	0.00	459.000
459.010	1:1	0.00	0.00	1:1	0.00	459.010	1.34	1.34	0.00	0.00	459.010
459.020	1:1	0.00	0.00	1:1	0.00	459.020	1.34	1.34	0.00	0.00	459.020
459.030	1:1	0.00	0.00	1:1	0.00	459.030	1.34	1.34	0.00	0.00	459.030
459.040	1:1	0.00	0.00	1:1	0.00	459.040	1.34	1.34	0.00	0.00	459.040
459.050	1:1	0.00	0.00	1:1	0.00	459.050	1.34	1.34	0.00	0.00	459.050
459.060	1:1	0.00	0.00	1:1	0.00	459.060	1.34	1.34	0.00	0.00	459.060
459.070	1:1	0.00	0.00	1:1	0.00	459.070	1.34	1.34	0.00	0.00	459.070
459.080	1:1	0.00	0.00	1:1	0.00	459.080	1.34	1.34	0.00	0.00	459.080
459.090	1:1	0.00	0.00	1:1	0.00	459.090	1.34	1.34	0.00	0.00	459.090
459.100	1:1	0.00	0.00	1:1	0.00	459.100	1.34	1.34	0.00	0.00	459.100
459.110	1:1	0.00	0.00	1:1	0.00	459.110	1.34	1.34	0.00	0.00	459.110
459.120	1:1	0.00	0.00	1:1	0.00	459.120	1.34	1.34	0.00	0.00	459.120
459.130	1:1	0.00	0.00	1:1	0.00	459.130	1.34	1.34	0.00	0.00	459.130
459.140	1:1	0.00	0.00	1:1	0.00	459.140	1.34	1.34	0.00	0.00	459.140
459.150	1:1	0.00	0.00	1:1	0.00	459.150	1.34	1.34	0.00	0.00	459.150
459.160	1:1	0.00	0.00	1:1	0.00	459.160	1.34	1.34	0.00	0.00	459.160
459.170	1:1	0.00	0.00	1:1	0.00	459.170	1.34	1.34	0.00	0.00	459.170
459.180	1:1	0.00	0.00	1:1	0.00	459.180	1.34	1.34	0.00	0.00	459.180
459.190	1:1	0.00	0.00	1:1	0.00	459.190	1.34	1.34	0.00	0.00	459.190
459.200	1:1	0.00	0.00	1:1	0.00	459.200	1.34	1.34	0.00	0.00	459.200
459.210	1:1	0.00	0.00	1:1	0.00	459.210	1.34	1.34	0.00	0.00	459.210
459.220	1:1	0.00	0.00	1:1	0.00	459.220	1.34	1.34	0.00	0.00	459.220
459.230	1:1	0.00	0.00	1:1	0.00	459.230	1.34	1.34	0.00	0.00	459.230
459.240	1:1	0.00	0.00	1:1	0.00	459.240	1.34	1.34	0.00	0.00	459.240
459.250	1:1	0.00	0.00	1:1	0.00	459.250	1.34	1.34	0.00	0.00	459.250
459.260	1:1	0.00	0.00	1:1	0.00	459.260	1.34	1.34	0.00	0.00	459.260
459.270	1:1	0.00	0.00	1:1	0.00	459.270	1.34	1.34	0.00	0.00	459.270
459.280	1:1	0.00	0.00	1:1	0.00	459.280	1.34	1.34	0.00	0.00	459.280
459.290	1:1	0.00	0.00	1:1	0.00	459.290	1.34	1.34	0.00	0.00	459.290
459.300	1:1	0.00	0.00	1:1	0.00	459.300	1.34	1.34	0.00	0.00	459.300
459.310	1:1	0.00	0.00	1:1	0.00	459.310	1.34	1.34	0.00	0.00	459.310
459.320	1:1	0.00	0.00	1:1	0.00	459.320	1.34	1.34	0.00	0.00	459.320
459.330	1:1	0.00	0.00	1:1	0.00	459.330	1.34	1.34	0.00	0.00	459.330
459.340	1:1	0.00	0.00	1:1	0.00	459.340	1.34	1.34	0.00	0.00	459.340
459.350	1:1	0.00	0.00	1:1	0.00	459.350	1.34	1.34	0.00	0.00	459.350
459.360	1:1	0.00	0.00	1:1	0.00	459.360	1.34	1.34	0.00	0.00	459.360
459.370	1:1	0.00	0.00	1:1	0.00	459.370	1.34	1.34	0.00	0.00	459.370
459.380	1:1	0.00	0.00	1:1	0.00	459.380	1.34	1.34	0.00	0.00	459.380
459.390	1:1	0.00	0.00	1:1	0.00	459.390	1.34	1.34	0.00	0.00	459.390
459.400	1:1	0.00	0.00	1:1	0.00	459.400	1.34	1.34	0.00	0.00	459.400
459.410	1:1	0.00	0.00	1:1	0.00	459.410	1.34	1.34	0.00	0.00	459.410
459.420	1:1	0.00	0.00	1:1	0.00	459.420	1.34	1.34	0.00	0.00	459.420
459.430	1:1	0.00	0.00	1:1	0.00	459.430	1.34	1.34	0.00	0.00	459.430
459.440	1:1	0.00	0.00	1:1	0.00	459.440	1.34	1.34	0.00	0.00	459.440
459.450	1:1	0.00	0.00	1:1	0.00	459.450	1.34	1.34	0.00	0.00	459.450
459.460	1:1	0.00	0.00	1:1	0.00	459.460	1.34	1.34	0.00	0.00	459.460
459.470	1:1	0.00	0.00	1:1	0.00	459.470	1.34	1.34	0.00	0.00	459.470
459.480	1:1	0.00	0.00	1:1	0.00	459.480	1.34	1.34	0.00	0.00	459.480
459.490	1:1	0.00	0.00	1:1	0.00	459.490	1.34	1.34	0.00	0.00	459.490
459.500	1:1	0.00	0.00	1:1	0.00	459.500	1.34	1.34	0.00	0.00	459.500
459.510	1:1	0.00	0.00	1:1	0.00	459.510	1.34	1.34	0.00	0.00	459.510

MINISTRY OF TRANSPORT AND ROADS  
GOVERNMENT OF SOUTHERN SUDAN

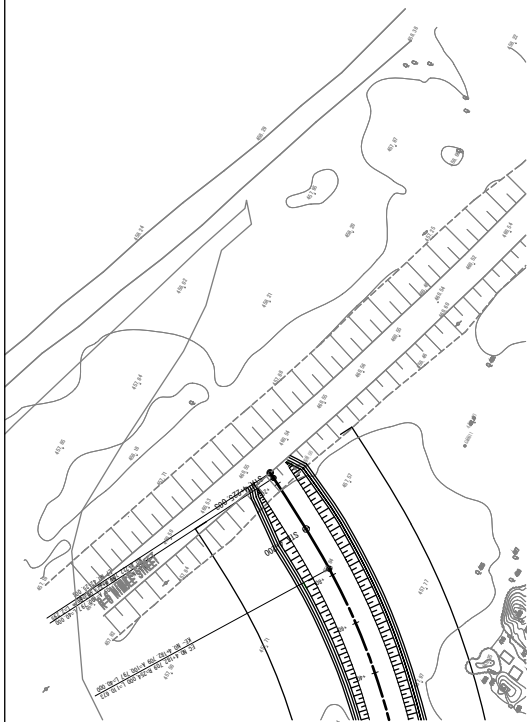
PRELIMINARY SURVEY FOR THE PROJECT FOR  
CONSTRUCTION OF NILE RIVER BRIDGE  
IN SOUTHERN SUDAN

JAPAN INTERNATIONAL COOPERATION AGENCY  
CTI ENGINEERING INTERNATIONAL CO., LTD.  
EIGHT-JAPAN ENGINEERING CONSULTANTS INC.

General Plan And Profile (7)

SHEET NO.  
SCALE  
V=1/200  
H=1/1000  
DATE  
OCT 2011





DL=465.000	
<b>Slope (FPH)</b>	
<b>F P H</b>	460.610 460.610 460.610
<b>Slope (PH)</b>	
<b>P H</b>	459.766 459.766 459.766
<b>Existing Level</b>	457.527 458.600 458.858 459.000 459.142 459.284 459.426 459.568
<b>Cutting Height</b>	
<b>Filling Height</b>	2.99 1.70 0.00
<b>Accumulative Length</b>	4200.000 4223.000 4252.000 4290.000
<b>Distance</b>	17.29
<b>Station</b>	+220 +4200
<b>Horizontal Alignment</b>	
<b>Superelevation</b>	

MINISTRY OF TRANSPORT AND ROADS  
GOVERNMENT OF SOUTHERN SUDAN

PRELIMINARY SURVEY FOR THE PROJECT FOR  
CONSTRUCTION OF NILE RIVER BRIDGE  
IN SOUTHERN SUDAN

JAPAN INTERNATIONAL COOPERATION AGENCY  
CTI ENGINEERING INTERNATIONAL CO., LTD.  
EIGHT-JAPAN ENGINEERING CONSULTANTS INC.

TITLE:

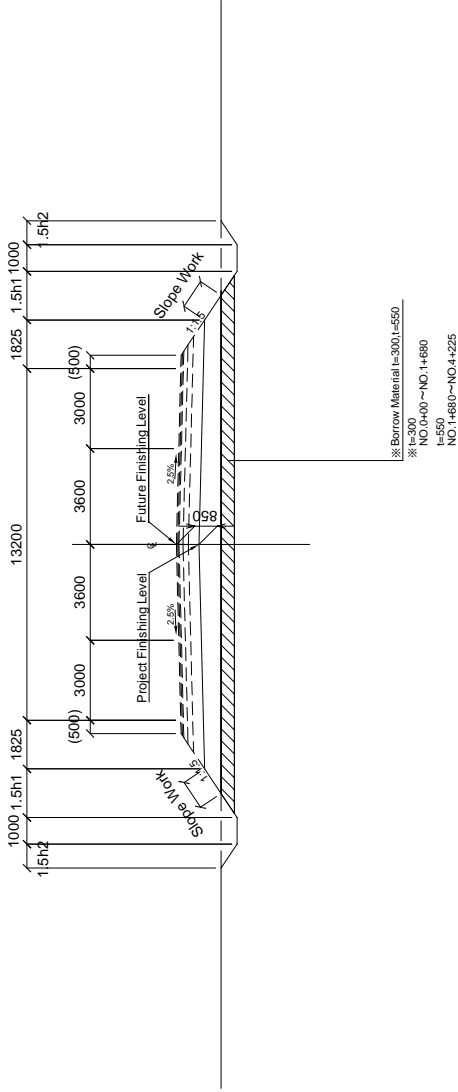
General Plan And Profile (8)

SCALE	SHEET NO.
V=1/200 H=1/1000	
DATE	
OCT 2011	NB-13

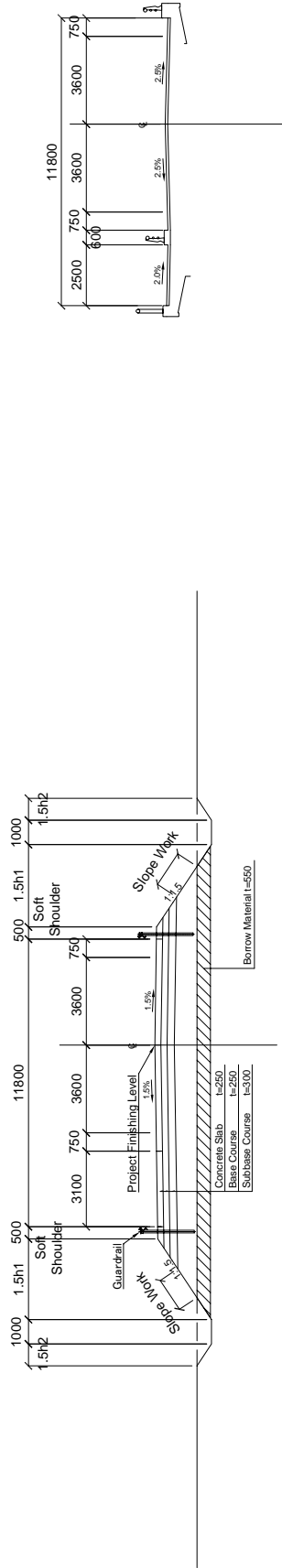
# Typical Cross Section

SCALE 1/100

Standard



Bridge  
No. 2+304~No. 2+864



MINISTRY OF TRANSPORT AND ROADS GOVERNMENT OF SOUTHERN SUDAN	PRELIMINARY SURVEY FOR THE PROJECT FOR CONSTRUCTION OF NILE RIVER BRIDGE IN SOUTHERN SUDAN	JAPAN INTERNATIONAL COOPERATION AGENCY CTI ENGINEERING INTERNATIONAL CO., LTD. EIGHT-JAPAN ENGINEERING CONSULTANTS INC.	TITLE:  Typical Cross Section Of Approach Road
			SHEET NO. NB-14

