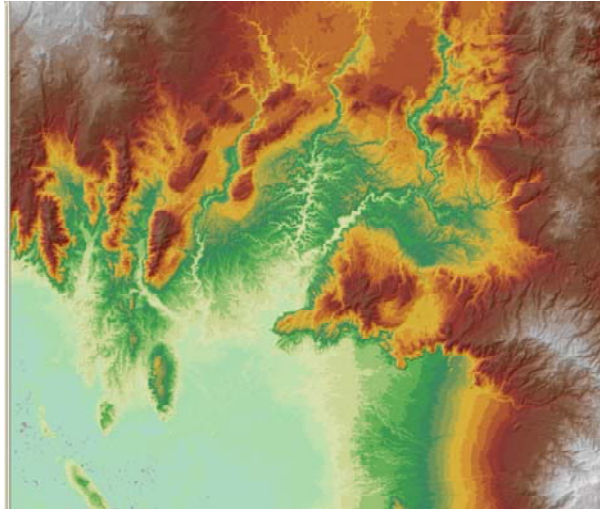
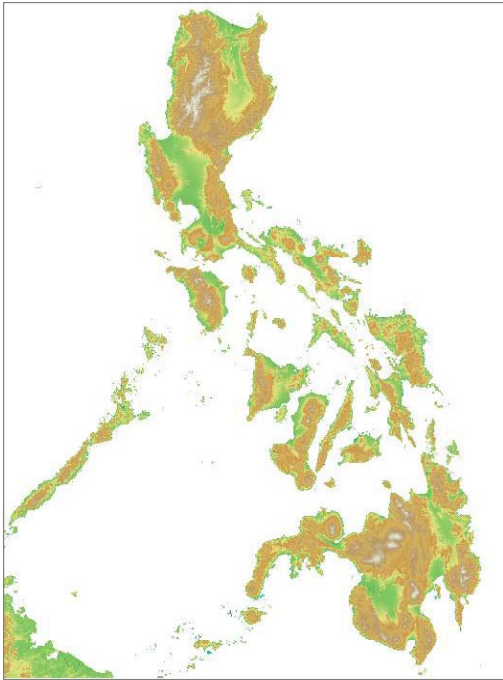


# Topography

## SRTM (The Shuttle Radar Topography Mission)

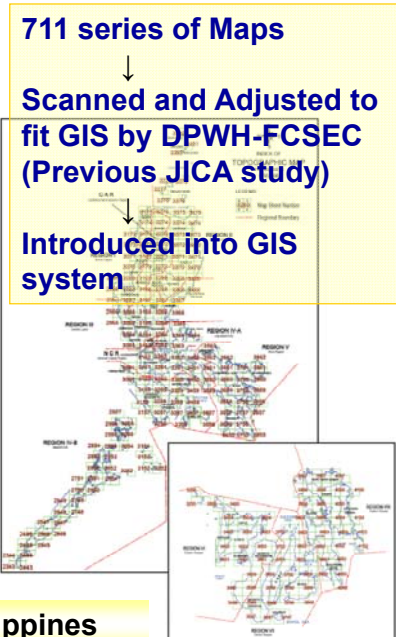
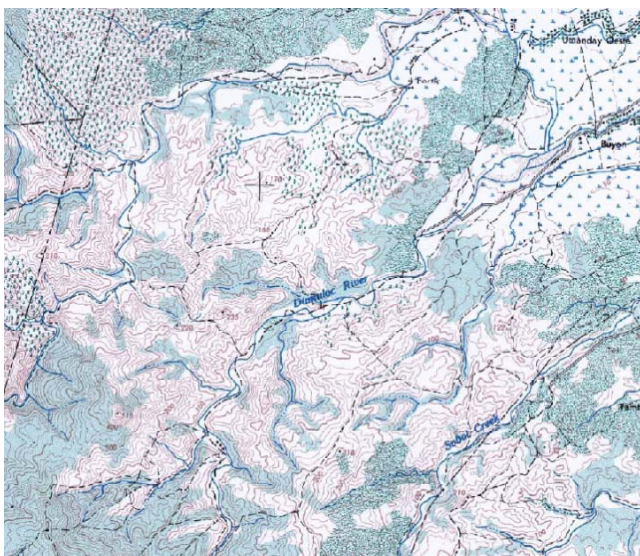


90m mesh Digital Elevation Model Data

Source: USGS (United States Geological Survey)  
[http://dds.cr.usgs.gov/srtm/version2\\_1/](http://dds.cr.usgs.gov/srtm/version2_1/)

# Topography

## Topographic Map of 1/50,000 Scale



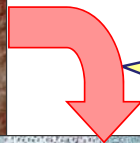
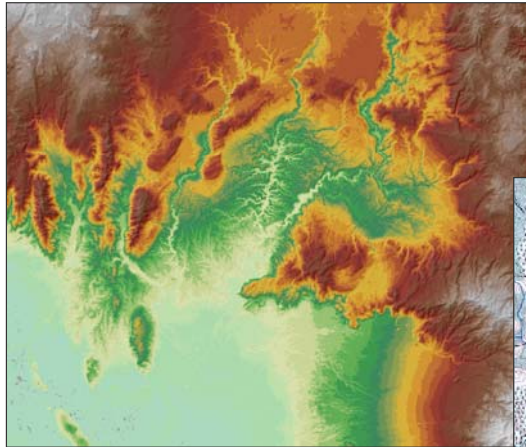
These data covers all over the Philippines

Source:  
Map : NAMRIA (National Mapping and Resource Information Authority)  
Data : DPWH-FCSEC (Flood Control Sabo Engineering Center, Department of Public Works and Highways)

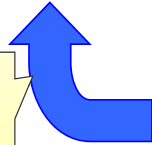
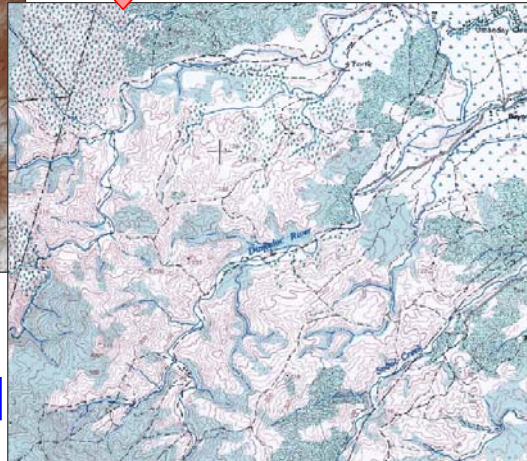
# Topography

Data Contents in HRD

## SRTM (The Shuttle Radar Topography Mission)



Switched from SRTM to 1/50,000 automatically when zoomed in



Switched from 1/50,000 to SRTM automatically when zoomed out

Map of 1/50,000 Scale

One of Sales Point of this System;  
In this GIS Database system, The Map will automatically switched from SRTM to 1/50,000 corresponding to the display scale (when you zoom in)

### 3.3 Example Images of HRD

#### Initial Screen

**Site Search system**

Searching for the project with some key words - Name, Status, Island, Province, ..., etc.

Check	ID	Project ID	Status	Status ID	Potential	Island	Region	Province	Municipality	Barangay	River Basin	Stream Name	Tributary	Region Name
<input type="checkbox"/>	9111	1689	NDR	71	Potential	Negros	12	NEGROS	SANTA C.	Nagbunan	Cautian	Cautian		Cautian
<input type="checkbox"/>	9112	1690	NDR	72	Potential	Negros	12	NEGROS	ZAMBOA.	Basin	Cantaway	Cantaway		Cantaway
<input type="checkbox"/>	9113	1691	NDR	73	Potential	Negros	12	NEGROS	ZAMBOA.	Malay	Bangollet	Cantaway		Cantaway
<input type="checkbox"/>	9114	1692	NDR	74	Potential	Negros	12	NEGROS	SAGAY C.	Pilar	Hingagan	Hingagan		Mansu Dinary
<input type="checkbox"/>	9115	1693	NDR	75	Potential	Negros	12	NEGROS	SAGAY C.	Pilar	Hingagan	Hingagan		Mansu Dinary
<input type="checkbox"/>	9116	1694	NDR	76	Potential	Negros	12	NEGROS	OLIMPION	Villasis	Bantuan	Bantuan		Gulchuanan
<input type="checkbox"/>	9117	1695	NDR	77	Potential	Negros	12	NEGROS	OLIMPION	Villasis	Bantuan	Bantuan		Gulchuanan
<input type="checkbox"/>	9118	1696	NDR	78	Potential	Negros	12	NEGROS	OLIMPION	Villasis	Bantuan	Bantuan		Gulchuanan

**Search Result**

The selected Project will be shown

**Zoom in by mouse**



## Example Images of HRD

### Project Information

- (1) Project Information
- (2) River Profile
- (3) Duration Curve
- (4) Layout Profile
- (5) Site Reconnaissance
- (6) 3D Bird's Eye
- (7) Original Data

### Site Reconnaissance Report

Original Data

PDF file

3D Bird's eye view

## Example Images of HRD

### Data Updating

### Easy to Update the Data in HRD

### Window for Updating

Easy to Find the Project by using search system

Input the appropriate data and then update by push "OK" button

Delete the data

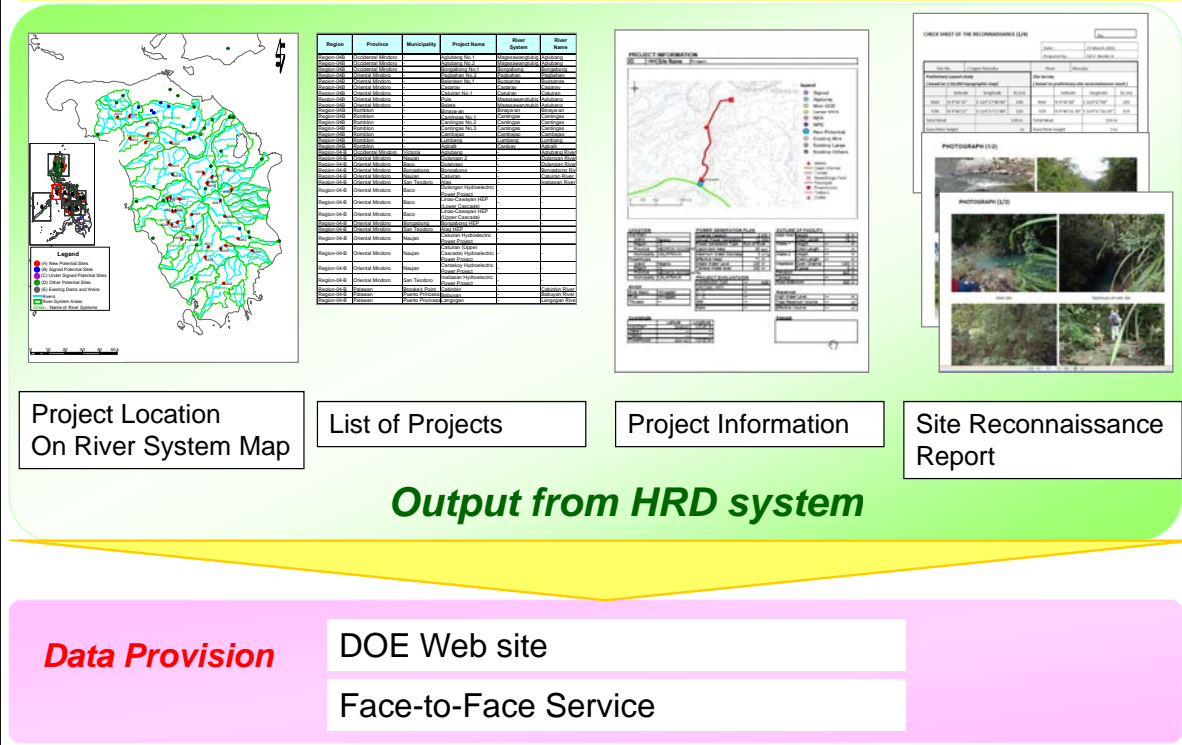
Update the Project data

Update End.

A6-13

## 4. Proposal of Applying HRD

### ~ Hydropower Resource Database (HRD) ~



## 4. Proposal of Applying HRD

