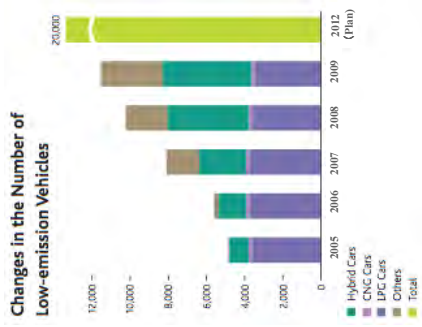


Strategy 2

Active Deployment of Low-emission Delivery Vehicles



Goal: 20,000 low-emission delivery vehicles by 2012

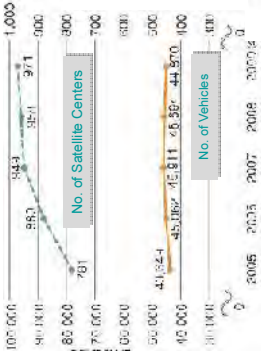
In 2009, added 1,298 low-emission vehicles, including 379 hybrids, to the total to 11,538



Hybrid Delivery Car

Strategy 1

Delivery not Dependent on Trucks !



Satellite Center

More Satellite Centers



Low-emission vehicles and "Bus-stop operation"

Light vehicles 400m

Handcards and attached trailers

Bicycles with attached trailers

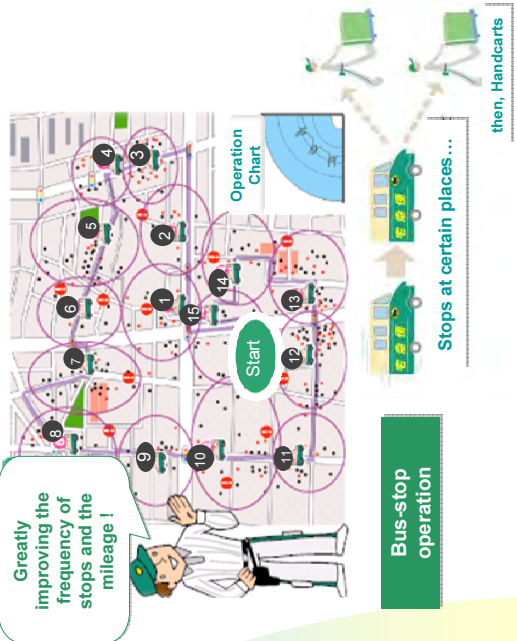
Different Modes depending on Distance from Distribution Center



Bicycle with attached trailer

Strategy 3

Eco-Drive, Application of Bus Stop Operation to minimize mileage



Greatly improving the frequency of stops and the mileage !

Bus-stop operation

Stops at certain places...

then, Handcards



Delivering & Collecting with Handcart

Quiz

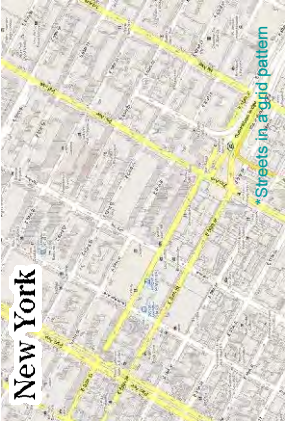
Can you distinguish these cities?



Answer

>>> Peculiarity of Japanese Metropolis

- *Mosaic of business districts and residential districts
- *Broad / narrow streets and avenue.



Streets in a grid pattern



Bicycles with attached trailers

Started with 5 Bicycles at a distribution center in Tokyo

Original Intent: To solve parking-space-limit issue and to stay out of traffic jams

2002 Generalized all over Japan

2004 Now over **3,500** Bicycles in use, covering **15%** of delivery in metropolitan area



- Effects:
- No Air Pollution, No Noise Pollution
 - More Flexible and Efficient Delivery/Collection esp. in Congested Area
 - Recognized as a Regional Community Member



Bicycle with attached trailers

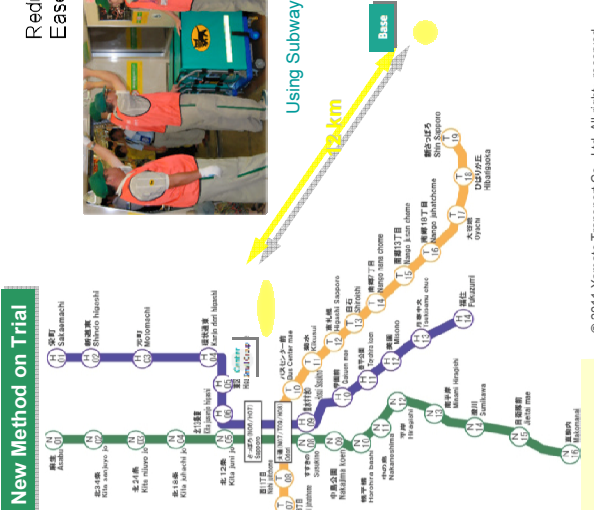
New Method on Trial

Reduce CO₂ Emission
Ease Traffic Congestion



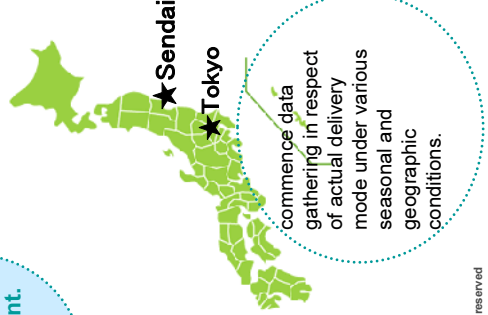
Using Subway instead of Trucks

Go Back and Forth between Sapporo Base and Distribution Centers (12km out of 13km by subway)



EV

TEST run has been commenced for deployment.



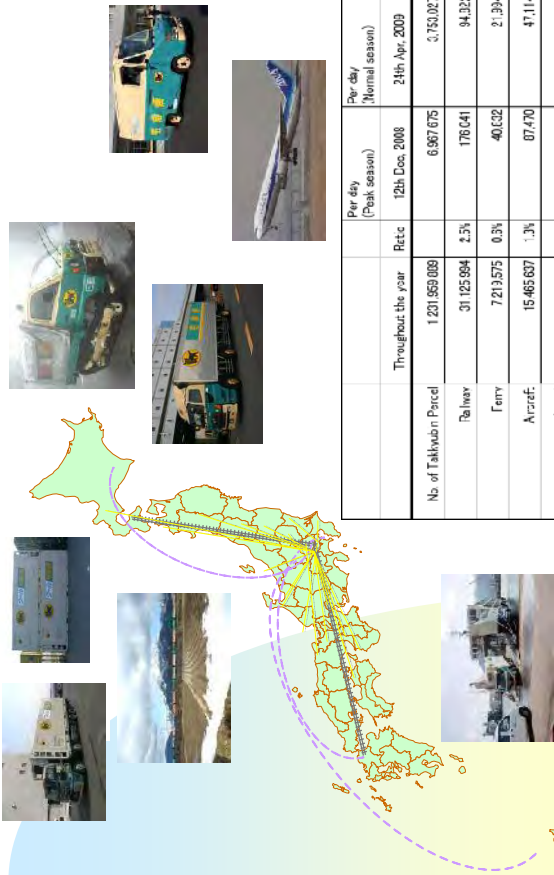
commence data gathering in respect of actual delivery mode under various seasonal and geographic conditions.

No need to use gas station. We can charge at the our center.



New Method on Trial

Various Means of Transport for both B2C/B2B



	Throughout the year	Ratio	Per day (Peak season)	Per day (Normal season)
No. of Takuhon Parcel	1,201,959,009	6,967,075	6,967,075	3,753,027
Railway	31,125,994	2.5%	176,641	94,322
Ferry	721,575	0.3%	40,332	2,394
Airref.	15,465,607	1.3%	87,470	47,114
Other(Land)	1,178,146,003	95.9%	6,663,322	3,589,097

12

© 2011 Yamato Transport Co., Ltd. All rights reserved.

Yamato Transportation Overview

Yamato Daily Transport Records (Oct.29,2009)

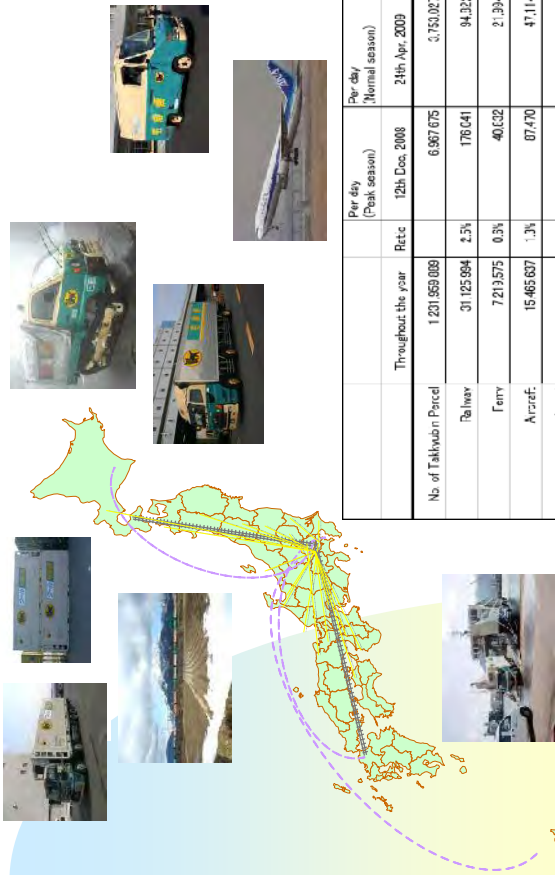
Type of Vehicle	# of Vehicle	Ratio	Mileage/Km
Total	46,792	78.1	103,122,488
Tractor	70	74.9	707,939
Trailer	86	58.4	91
Truck 10t	918	78.1	10,366,679
Truck 7-8t	119	72.0	359,870
Truck 3-5t	26	70.0	54,090
Mid Truck 3-5	597	71.1	1,901,837
S.Truck1.5-3	18,893	85.2	41,910,200
Van-G	392	55.7	398,463
Van-D	1,285	70.0	3,101,846
Walkthrough 2t	12,400	85.6	26,428,910
Walkthrough 1.25	26	51.3	30,939
Mini-Van	5,070	67.6	7,877,239
Lifts	2,807	60.1	0
Sedan	60	31.6	148,737
Others	4,092	31.6	9,939,651



13

© 2011 Yamato Transport Co., Ltd. All rights reserved.

Various Means of Transport for both B2C/B2B



	Throughout the year	Ratio	Per day (Peak season)	Per day (Normal season)
No. of Takuhon Parcel	1,201,959,009	6,967,075	6,967,075	3,753,027
Railway	31,125,994	2.5%	176,641	94,322
Ferry	721,575	0.3%	40,332	2,394
Airref.	15,465,607	1.3%	87,470	47,114
Other(Land)	1,178,146,003	95.9%	6,663,322	3,589,097

12

© 2011 Yamato Transport Co., Ltd. All rights reserved.

Yamato Transportation Overview

Yamato Daily Transport Records (Oct.29,2009)

Type of Vehicle	# of Vehicle	Ratio	Mileage/Km
Total	46,792	78.1	103,122,488
Tractor	70	74.9	707,939
Trailer	86	58.4	91
Truck 10t	918	78.1	10,366,679
Truck 7-8t	119	72.0	359,870
Truck 3-5t	26	70.0	54,090
Mid Truck 3-5	597	71.1	1,901,837
S.Truck1.5-3	18,893	85.2	41,910,200
Van-G	392	55.7	398,463
Van-D	1,285	70.0	3,101,846
Walkthrough 2t	12,400	85.6	26,428,910
Walkthrough 1.25	26	51.3	30,939
Mini-Van	5,070	67.6	7,877,239
Lifts	2,807	60.1	0
Sedan	60	31.6	148,737
Others	4,092	31.6	9,939,651



13

© 2011 Yamato Transport Co., Ltd. All rights reserved.

Now into Asian Countries

Jan. 2010
①Shanghai
 Sales Drivers: 254
 Vehicles: 100
 Delivery Centers: 13

Launched

②Singapore
 Sales Drivers: 70
 Vehicles: 35
 Delivery Centers: 6

Shanghai

Sep. 2011
③Hong Kong
 Sales Drivers: 51
 Vehicles: 14
 Delivery Centers: 4

Soon !

Feb. 2011
④MALAYSIA

Possibly... ?

⑤THAILAND
⑥Manila

⑦SOUTH KOREA
⑧VIETNAM

⑨AUSTRALIA
⑩INDIA

14

© 2011 Yamato Transport Co., Ltd. All rights reserved.

Thank YOU !

DAN-TOTSU

Let's Go Greening



YAMATO TRANSPORT CO., LTD.

