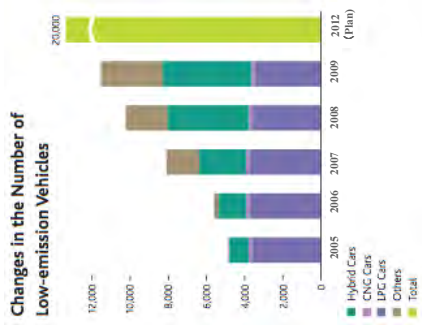


Strategy 2

Active Deployment of Low-emission Delivery Vehicles



Goal: 20,000 low-emission delivery vehicles by 2012

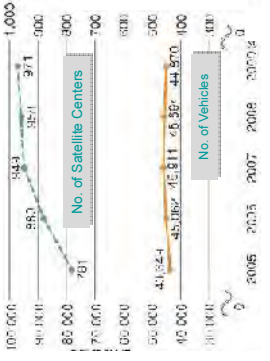
In 2009, added 1,298 low-emission vehicles, including 379 hybrids, to the total to 11,538



Hybrid Delivery Car

Strategy 1

Delivery not Dependent on Trucks !



Satellite Center

More Satellite Centers



Low-emission vehicles and "Bus-stop operation"

Light vehicles 400m

Handcars and bicycles with attached trailers 400m

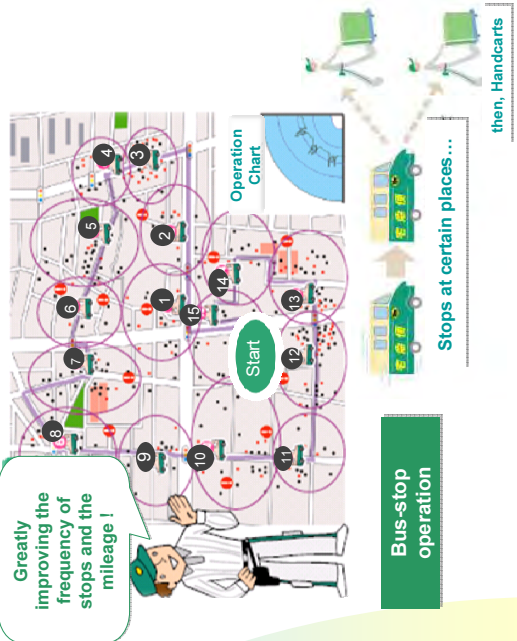
Different Modes depending on Distance from Distribution Center



Bicycle with attached trailer

Strategy 3

Eco-Drive, Application of Bus Stop Operation to minimize mileage



Greatly improving the frequency of stops and the mileage!

Bus-stop operation

Stops at certain places...

then, Handcarts



Delivering & Collecting with Handcart

Quiz

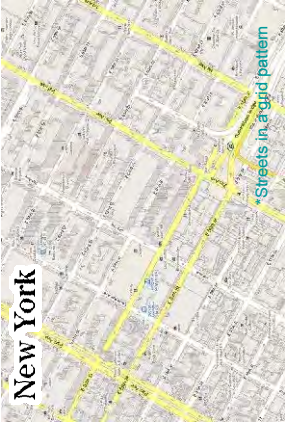
Can you distinguish these cities?



# Answer

>>> Peculiarity of Japanese Metropolis

- \*Mosaic of business districts and residential districts
- \*Broad / narrow streets and avenue.



## Bicycles with attached trailers

2002 Started with 5 Bicycles at a distribution center in Tokyo  
Original Intent: To solve parking-space-limit issue and to stay out of traffic jams

2004 Generalized all over Japan

2010 Now over **3,500** Bicycles in use, covering **15%** of delivery in metropolitan area



- Effects:
- No Air Pollution, No Noise Pollution
  - More Flexible and Efficient Delivery/Collection esp. in Congested Area
  - Recognized as a Regional Community Member



Bicycle with attached trailers

## New Method on Trial

Reduce CO<sub>2</sub> Emission  
Ease Traffic Congestion



Using Subway instead of Trucks

Go Back and Forth between Sapporo Base and Distribution Centers (12km out of 13km by subway)

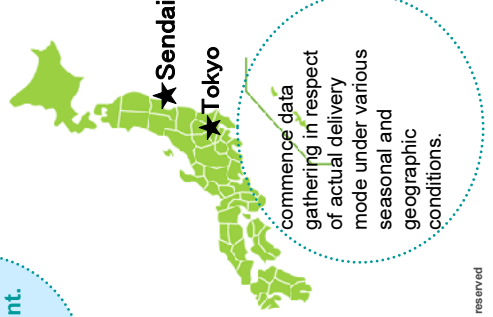


# EV

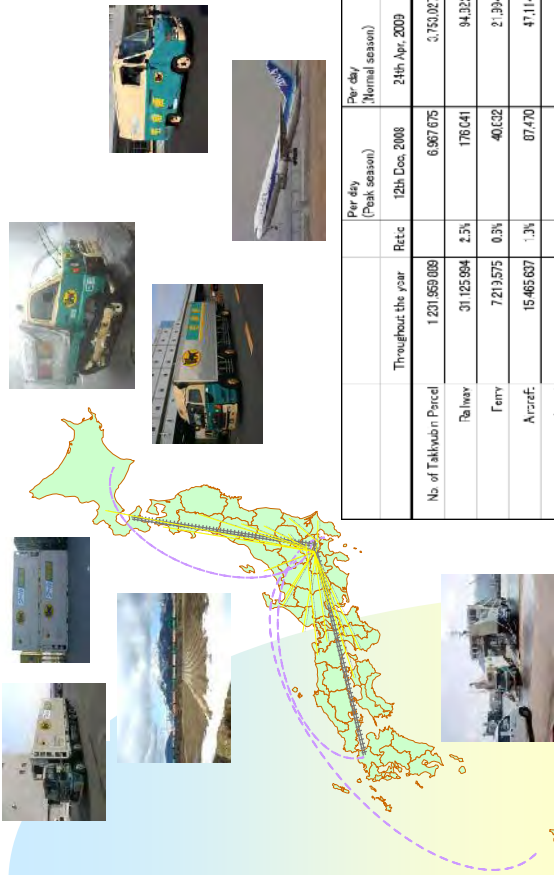
TEST run has been commenced for deployment.



No need to use gas station. We can charge at the our center.



## Various Means of Transport for both B2C/B2B



	Throughout the year	Ratio	Per day (Peak season)	Per day (Normal season)
No. of Takuhon Parcel	1,201,959,009		6,997,075	3,753,027
Railway	31,125,994	2.5%	176,641	94,322
Ferry	721,575	0.3%	40,332	2,394
Airref.	15,465,607	1.3%	87,470	47,114
Other(Land)	1,178,146,003	95.9%	6,663,322	3,589,097

## Yamato Transportation Overview



**Yamato Daily Transport Records ( Oct.29,2009 )**

Type of Vehicle	# of Vehicle	Ratio	Mileage/Km
Total	48,792	78.1	103,122,488
Tractor	70	74.9	707,939
Trailer	89	58.4	91
Truck 10t	918	78.1	10,366,679
Truck 7-8t	119	72.0	359,870
Truck 3-5t	26	70.0	54,090
Mid Truck 3-5	597	71.1	1,901,837
S.Truck1.5-3	18,893	85.2	41,910,200
Van-G	392	55.7	398,463
Van-D	1,285	70.0	3,101,846
Walkthrough 2t	12,400	85.6	26,428,910
Walkthrough 1.25	26	51.3	30,939
Mini-Van	5,070	67.6	7,877,239
Lifts	2,807	60.1	0
Sedan	90	31.6	148,737
Others	4,092	31.6	9,939,651



## Thank YOU !

**DAN-TOTSU**  
Let's Go Greening



YAMATO TRANSPORT CO., LTD.

## Now into Asian Countries

