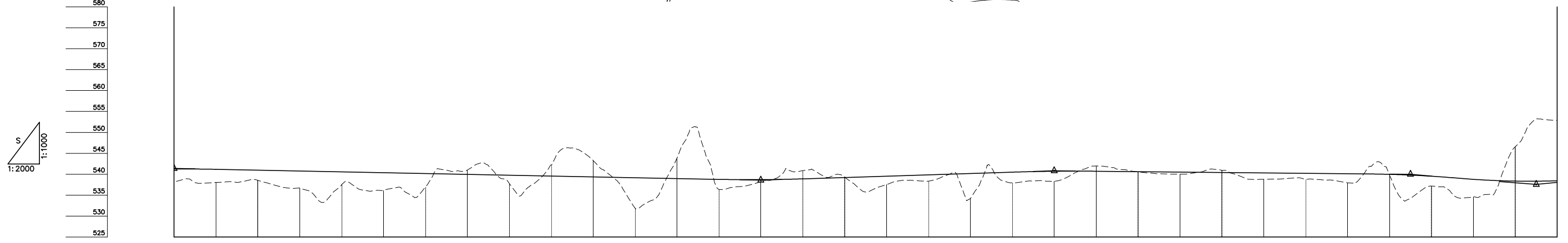


DEPARTMENT OF ROADS
 Ministry of Physical Planning and Works, FDR/ Nepal
 THE PROJECT FOR CONSTRUCTION OF SINDHULI ROAD
 (Section III)

PLAN AND PROFILE STA. 26+400 - STA. 27+060	Drawing No. B-54
Date: July, 2009	Scale: 1:2000
Designed by: <i>H. Dalgin</i>	Approved by:
NIPPON KOEI CO., LTD, Consulting Engineers, Japan	



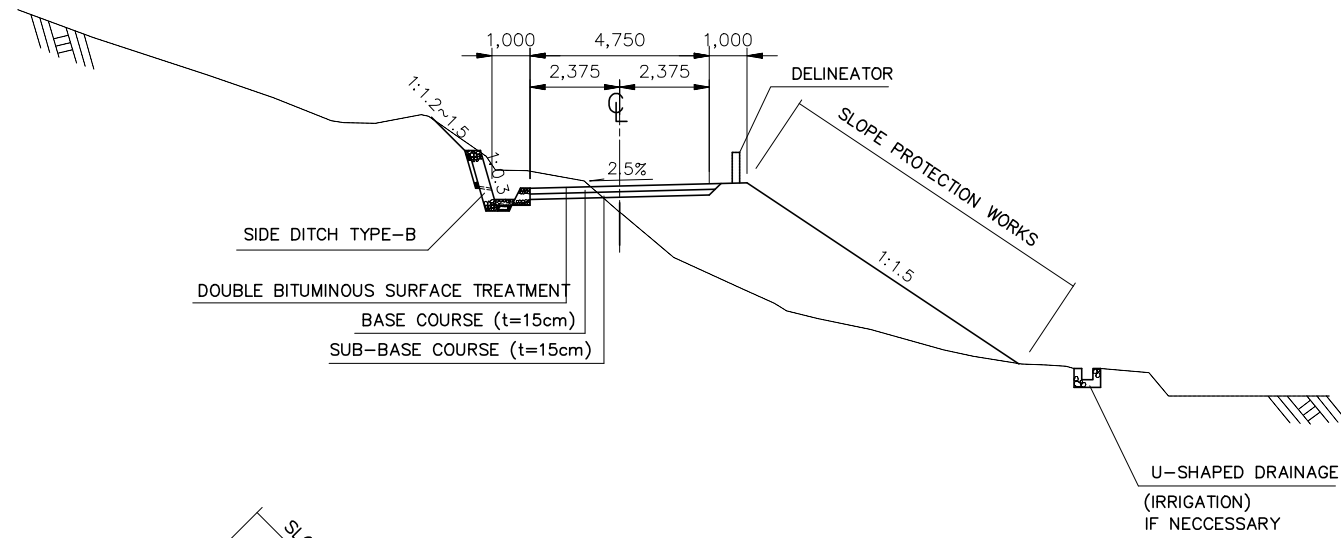
VCL = 40m VCR = 1481m VCL = 40m VCR = 1538m VCL = 40m VCR = 1905m VCL = 40m VCR = 1143m VCL = 70m VCR = 795m

GRADE																																					
PROPOSED HEIGHT	26+400	26+420	26+440	26+460	26+480	26+500	26+520	26+540	26+560	26+580	26+600	26+620	26+640	26+660	26+680	26+700	26+720	26+740	26+760	26+780	26+800	26+820	26+840	26+860	26+880	26+900	26+920	26+940	26+960	26+980	27+000	27+020	27+040	27+060			
GROUND HEIGHT	538.198	538.034	538.541	536.660	537.519	536.140	536.952	540.997	537.774	542.233	543.268	531.909	543.846	536.370	538.221	540.860	539.357	537.529	538.359	534.241	537.963	538.324	541.959	540.575	540.021	540.939	538.796	538.793	537.948	539.825	537.158	534.598	546.568	552.841			
CURVE ELEMENT	R=80 L=28.440	R=70 L=45.249	R=70 L=47.933	R=140 L=41.601	L=24.435	R=25 L=43.300	L=14.281	R=60 L=29.231	L=7.145	R=40 L=27.066	L=36.688	R=90 L=36.607	R=50 L=49.161	R=30 L=42.948	L=28.064	R=250 L=39.916	L=43.218	R=30 L=38.869	L=56.458	L=40.601																	
SUPER ELEVATION																																					
WIDENING																																					
DESIGN SPEED	30 Km/h																																				

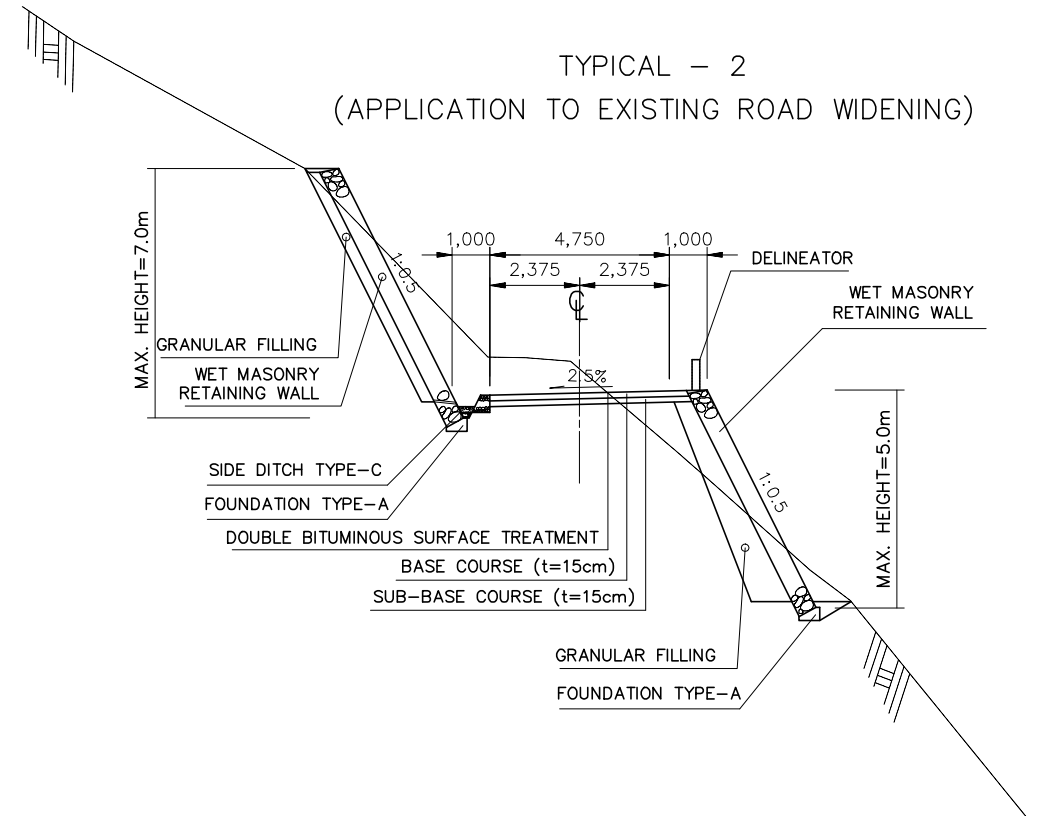
TYPICAL CROSS SECTIONS (1)

SCALE 1:200

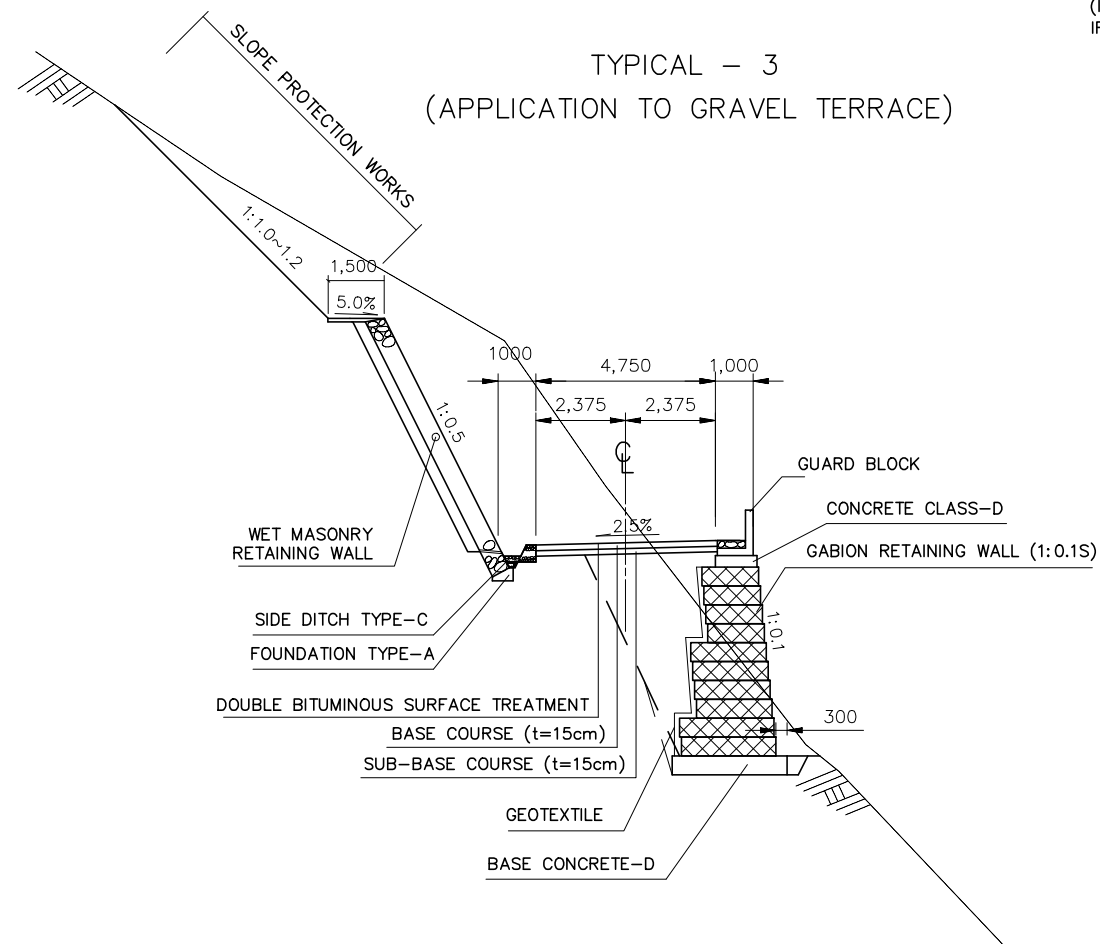
TYPICAL - 1
(APPLICATION TO AGRICULTURAL LAND)



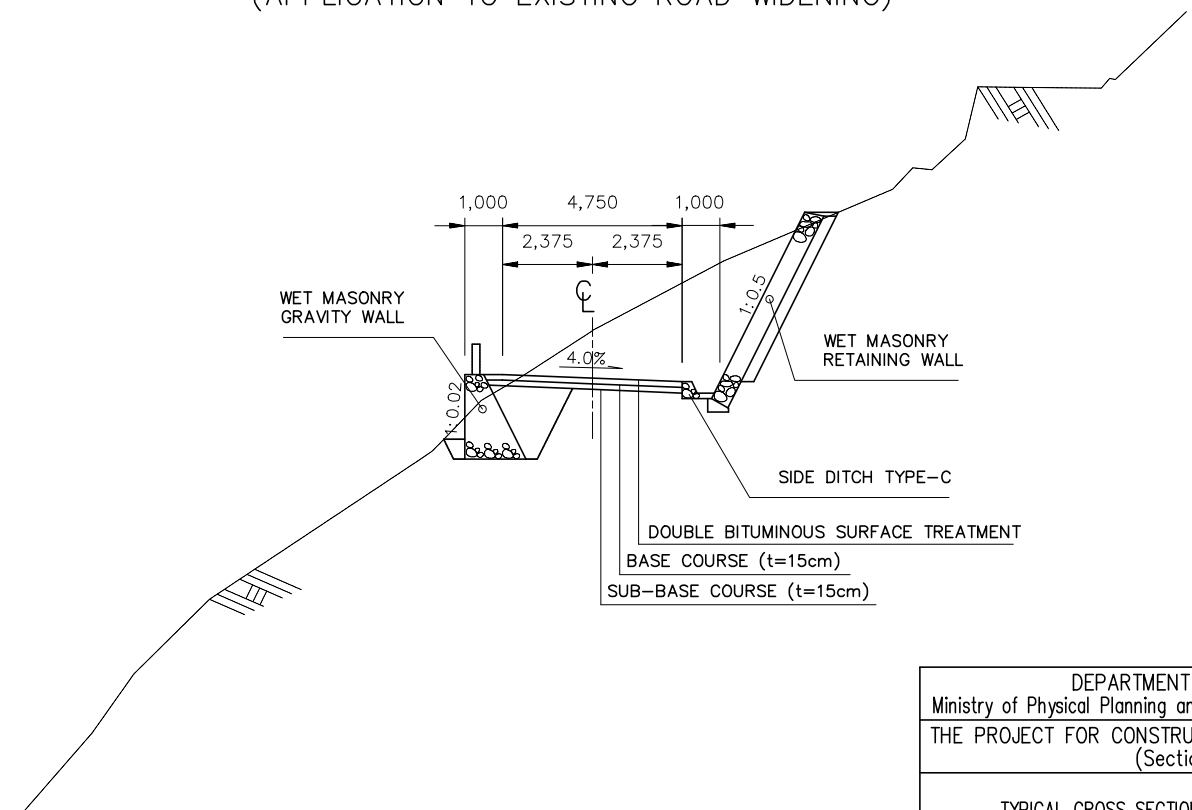
TYPICAL - 2
(APPLICATION TO EXISTING ROAD WIDENING)



TYPICAL - 3
(APPLICATION TO GRAVEL TERRACE)



TYPICAL - 4
(APPLICATION TO EXISTING ROAD WIDENING)

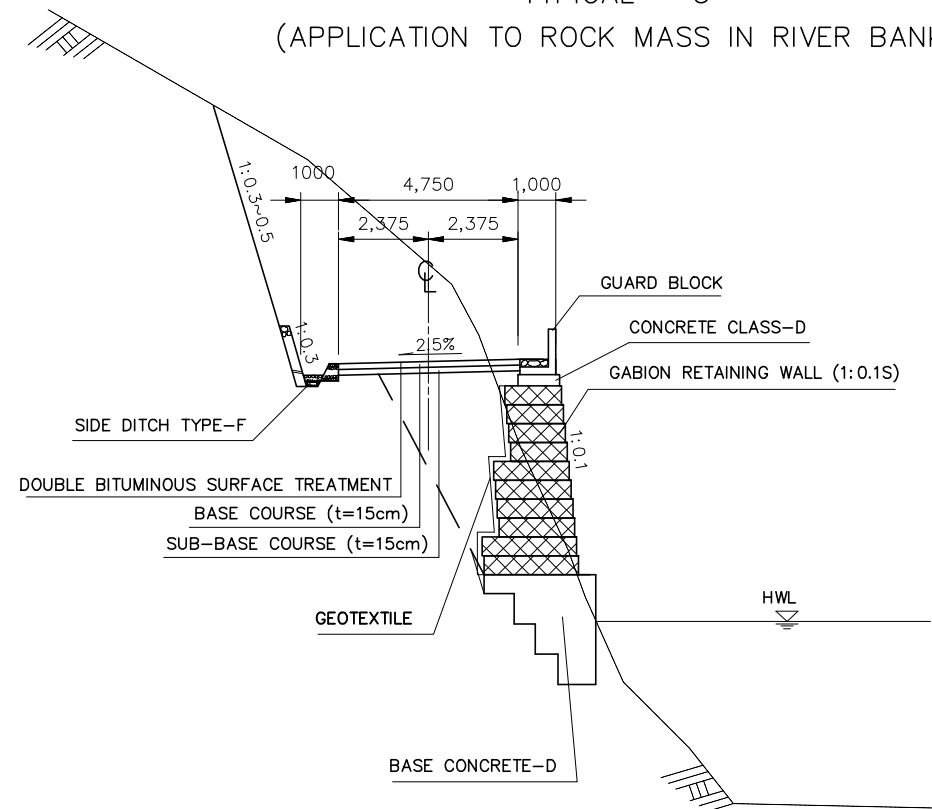


DEPARTMENT OF ROADS Ministry of Physical Planning and Works, FDR/ Nepal	
THE PROJECT FOR CONSTRUCTION OF SINDHULI ROAD (Section III)	
TYPICAL CROSS SECTION (1)	Drawing No. TX-01
Date: July, 2009	Scale: 1:200
Designed by: <i>H. Subedi</i>	Approved by:
NIPPON KOEI CO., LTD, Consulting Engineers, Japan	

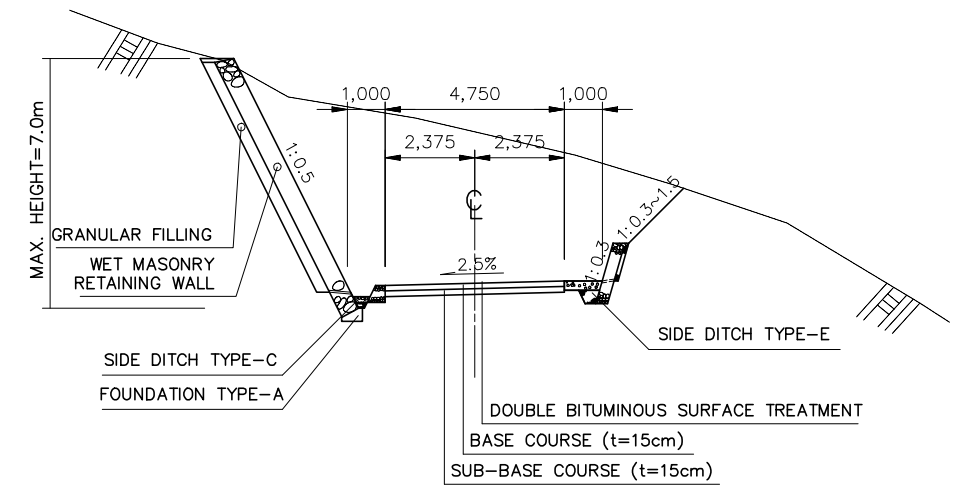
TYPICAL CROSS SECTIONS (2)

SCALE 1:200

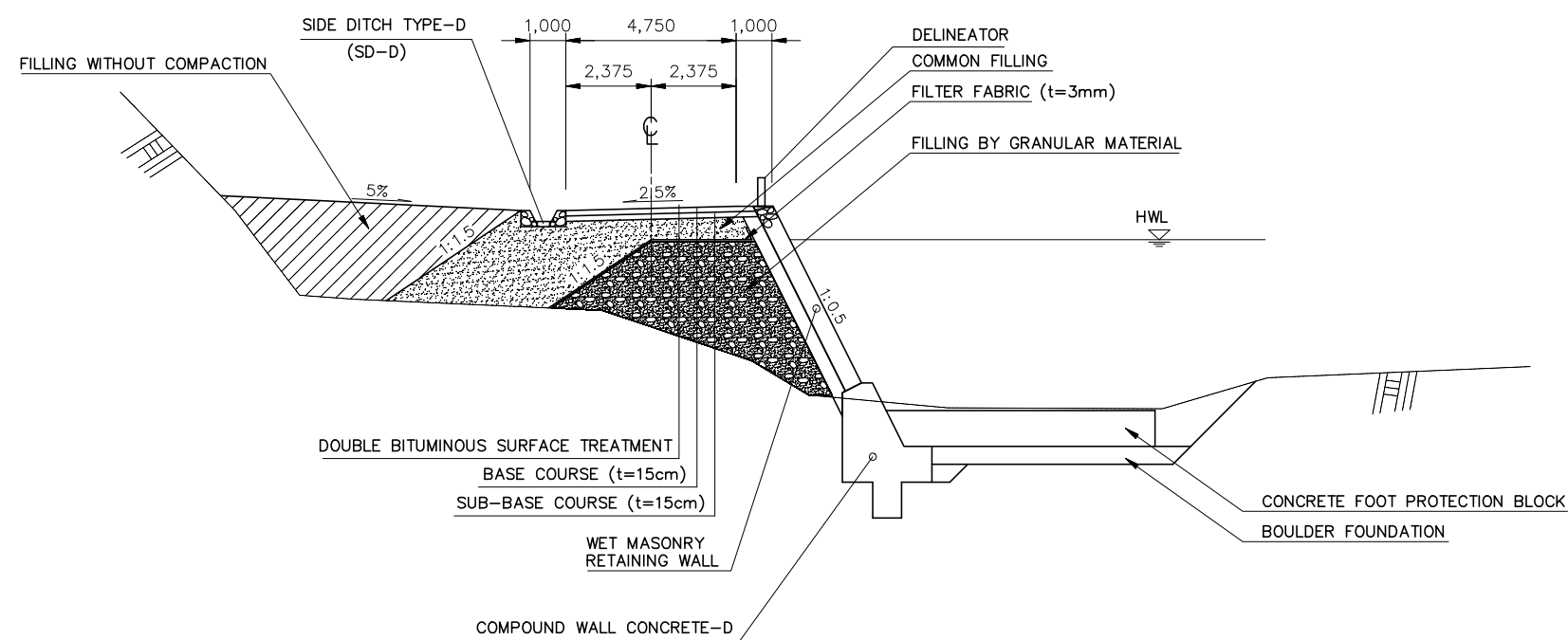
TYPICAL - 5
(APPLICATION TO ROCK MASS IN RIVER BANK)



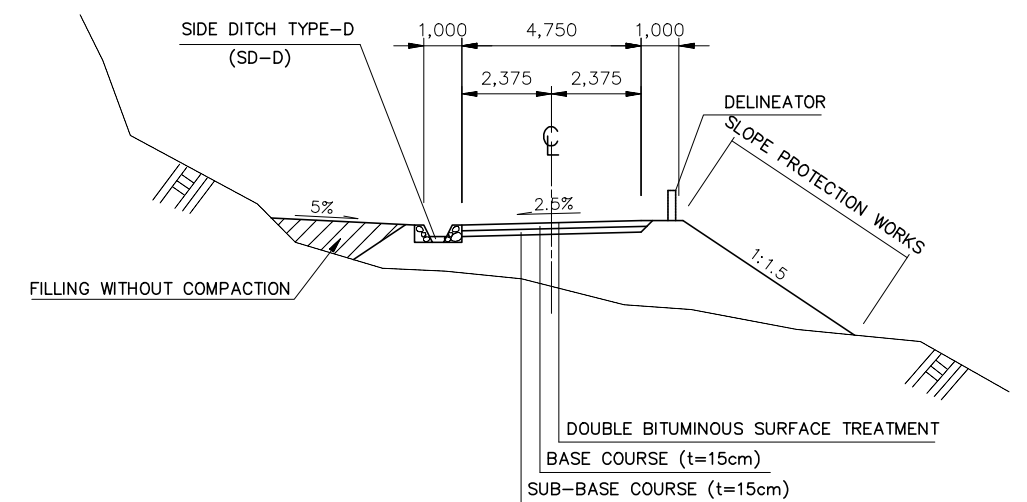
TYPICAL - 6
(APPLICATION TO OPEN CUT SECTION)



TYPICAL - 7
(APPLICATION TO EMBANKMENT ON RIVERBED)



TYPICAL - 8
(APPLICATION TO FULL EMBANKMENT SECTION)

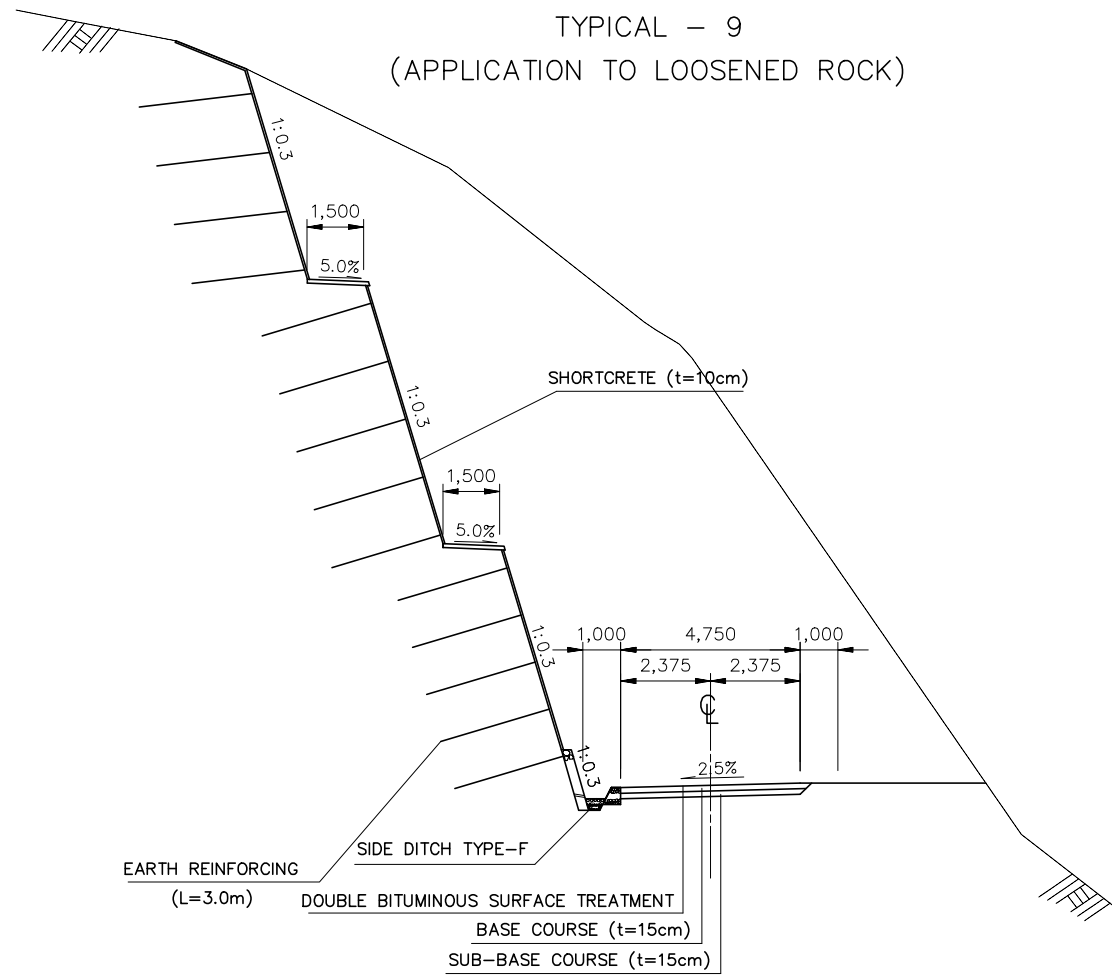


DEPARTMENT OF ROADS Ministry of Physical Planning and Works, FDR/ Nepal	
THE PROJECT FOR CONSTRUCTION OF SINDHULI ROAD (Section III)	
TYPICAL CROSS SECTION (2)	Drawing No. TX-02
Date: July, 2009	Scale: 1:200
Designed by: <i>[Signature]</i>	Approved by:
NIPPON KOEI CO., LTD, Consulting Engineers, Japan	

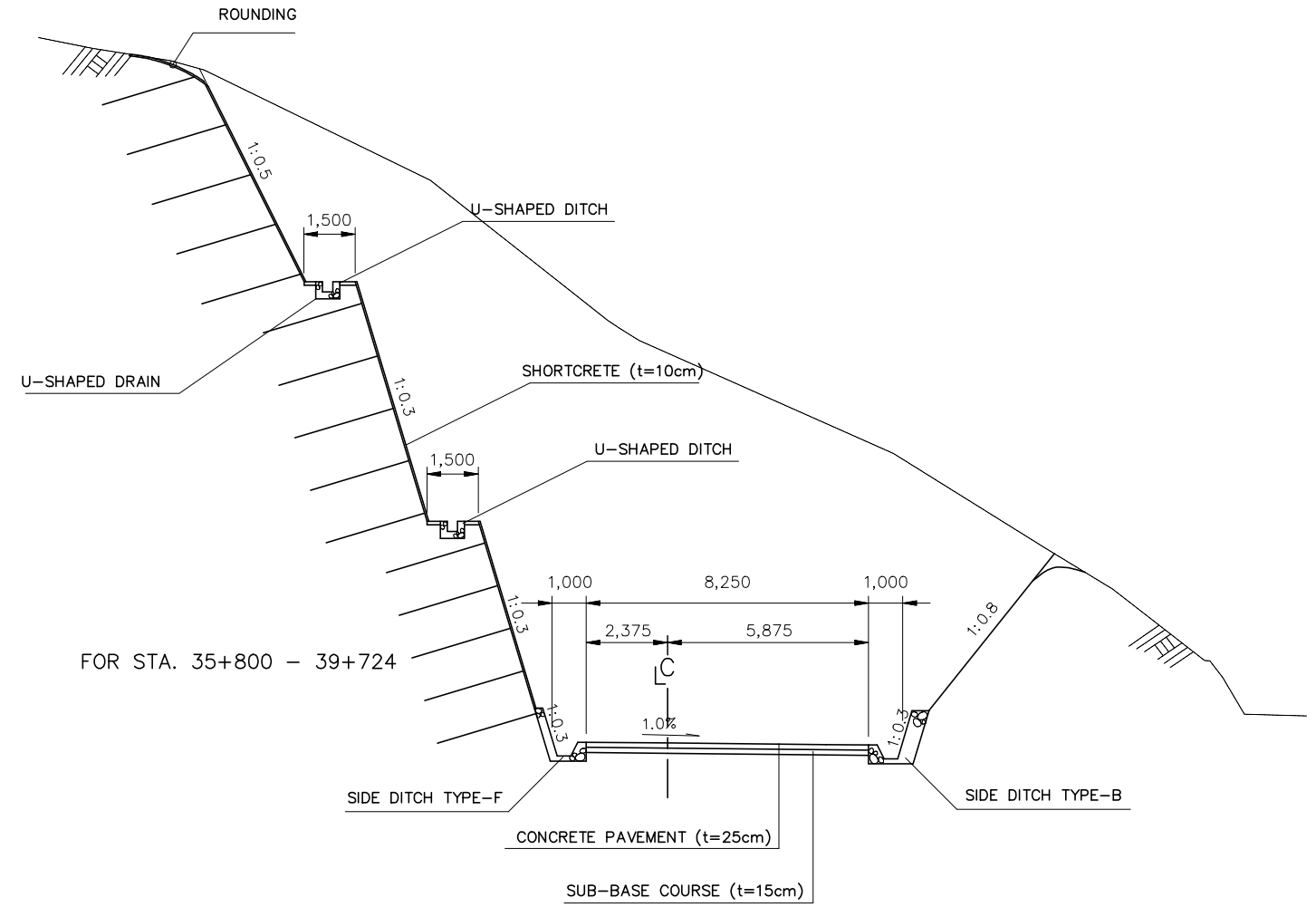
TYPICAL CROSS SECTIONS (3)

SCALE 1:200

TYPICAL - 9
(APPLICATION TO LOOSENEED ROCK)



TYPICAL10
(APPLICATION TO LOOSENEED ROCK)



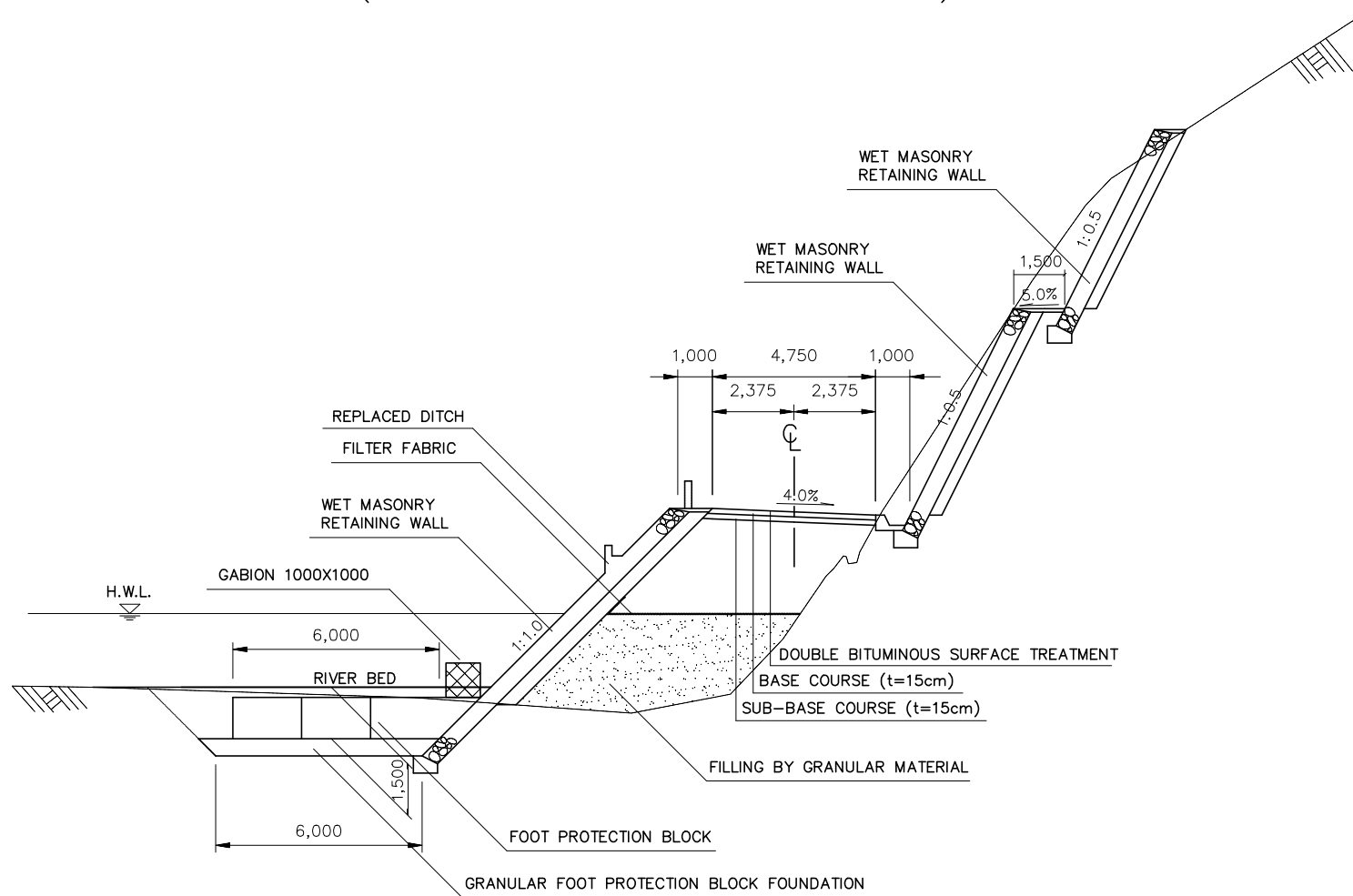
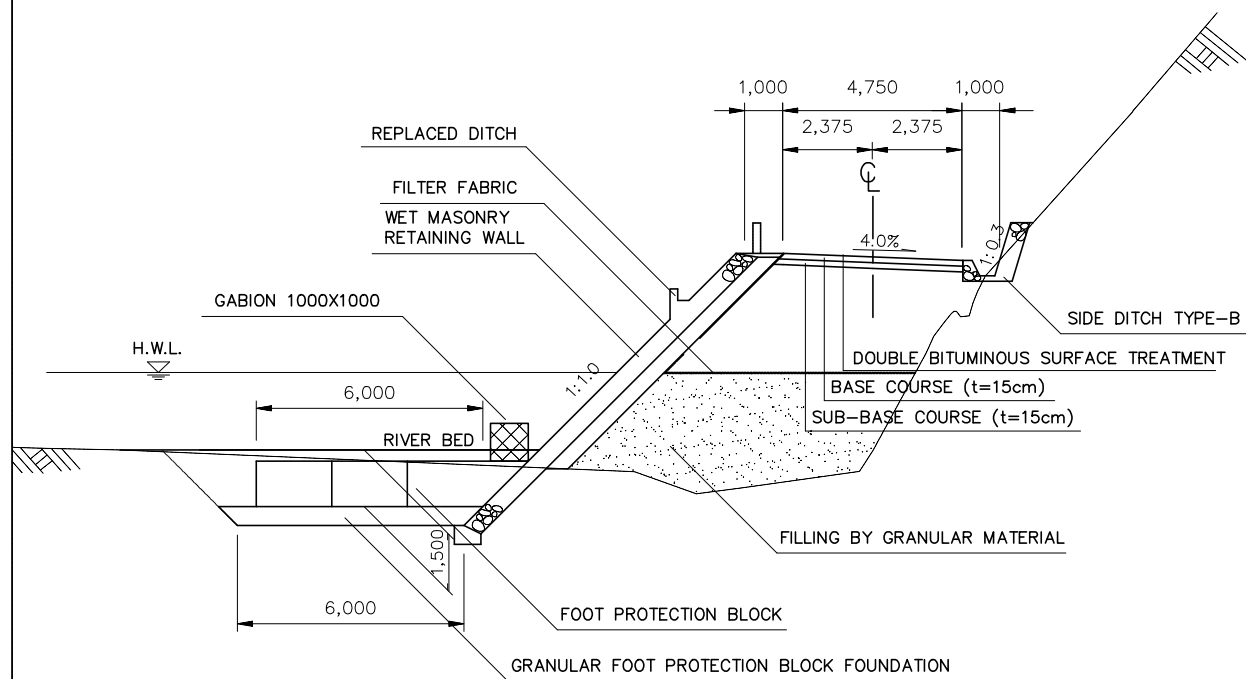
DEPARTMENT OF ROADS Ministry of Physical Planning and Works, FDR/ Nepal	
THE PROJECT FOR CONSTRUCTION OF SINDHULI ROAD (Section III)	
TYPICAL CROSS SECTION (3)	Drawing No. TX-03
Date: July, 2009	Scale: 1:200
Designed by: <i>H. Subedi</i>	Approved by:
NIPPON KOEI CO., LTD, Consulting Engineers, Japan	

TYPICAL CROSS SECTIONS (4)

SCALE 1:200

TYPICAL - 11
(APPLICATION TO SUNKOSHI RIVER SECTION)

TYPICAL - 12
(APPLICATION TO SUNKOSHI RIVER SECTION)



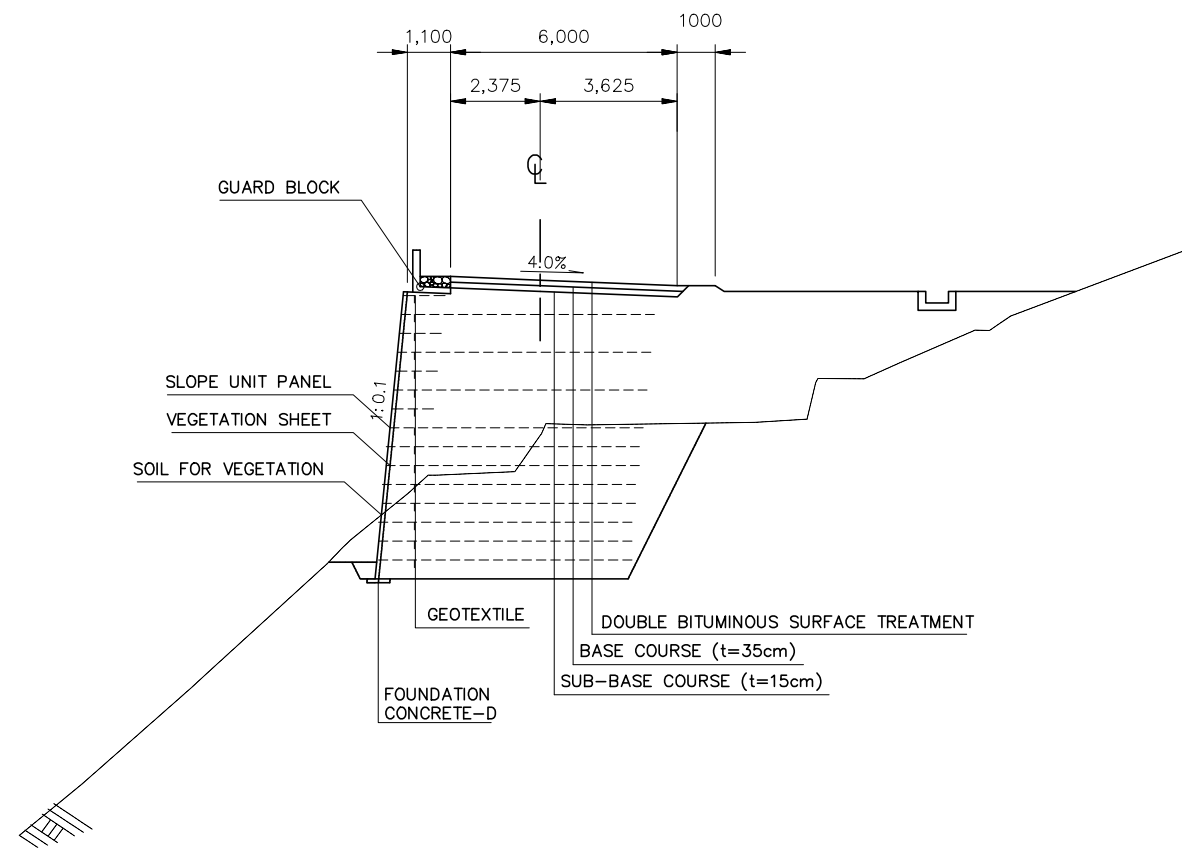
300-TX-04

DEPARTMENT OF ROADS Ministry of Physical Planning and Works, FDR/ Nepal	
THE PROJECT FOR CONSTRUCTION OF SINDHULI ROAD (Section III)	
TYPICAL CROSS SECTION (4)	Drawing No. TX-04
Date: July, 2009	Scale: 1:200
Designed by: <i>A. Saha</i>	Approved by:
NIPPON KOEI CO., LTD, Consulting Engineers, Japan	

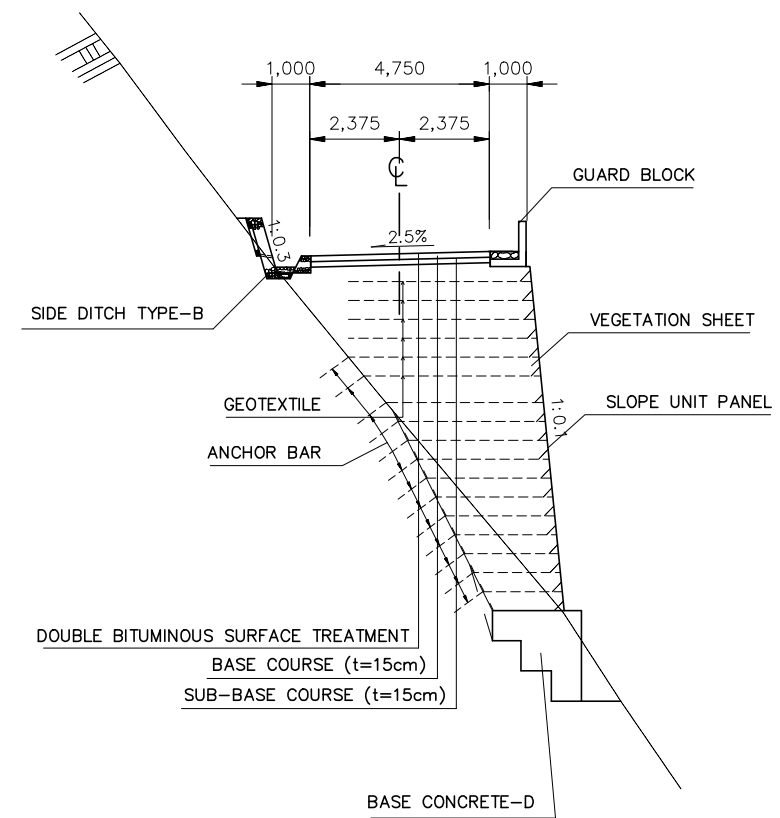
TYPICAL CROSS SECTIONS (5)

SCALE 1:200

TYPICAL - 13
(APPLICATION TO HIGH EMBANKMENT)



TYPICAL - 14
(APPLICATION TO HIGH EMBANKMENT FOR STA. 35+500 - 39+724)



300-TX-05

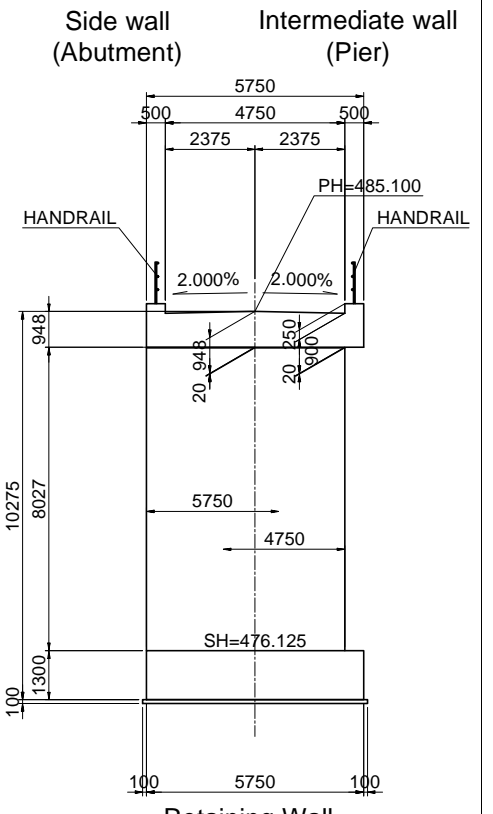
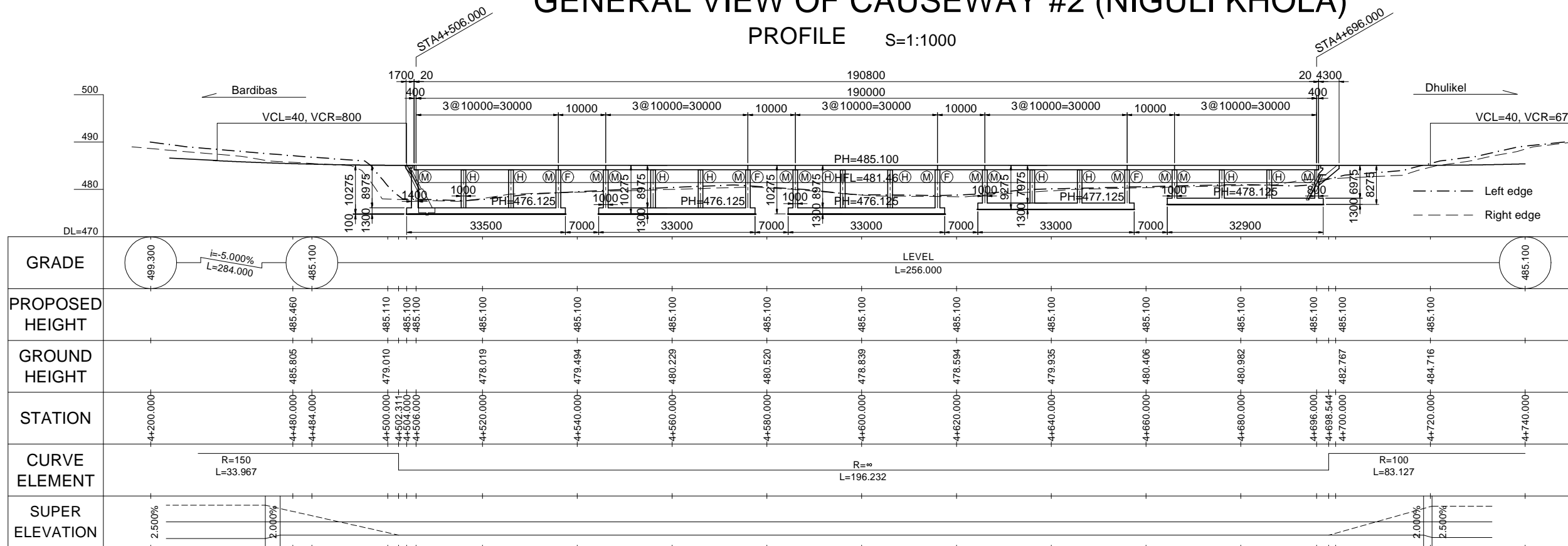
DEPARTMENT OF ROADS Ministry of Physical Planning and Works, FDR/ Nepal	
THE PROJECT FOR CONSTRUCTION OF SINDHULI ROAD (Section III)	
TYPICAL CROSS SECTION (5)	Drawing No. TX-05
Date: July, 2009	Scale: 1:200
Designed by: <i>M. Subyasa</i>	Approved by:
NIPPON KOEI CO., LTD, Consulting Engineers, Japan	

GENERAL VIEW OF CAUSEWAY #2 (NIGULI KHOLA)

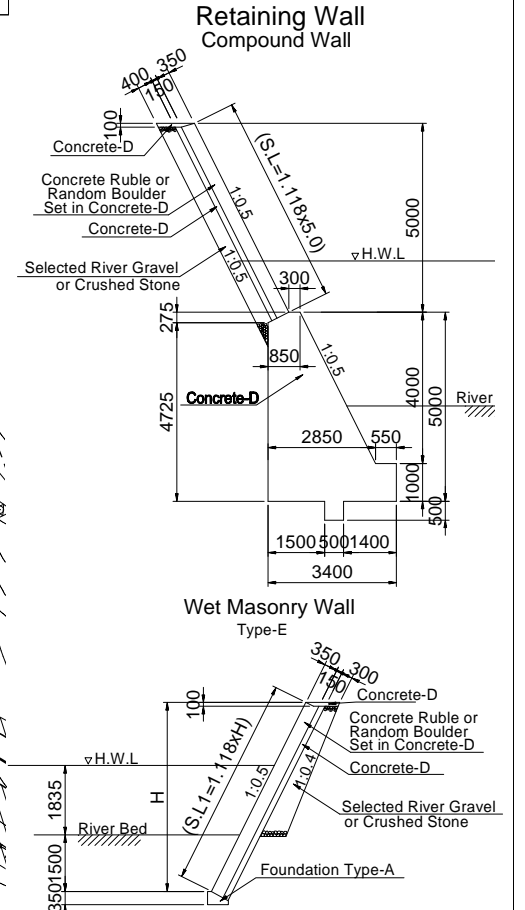
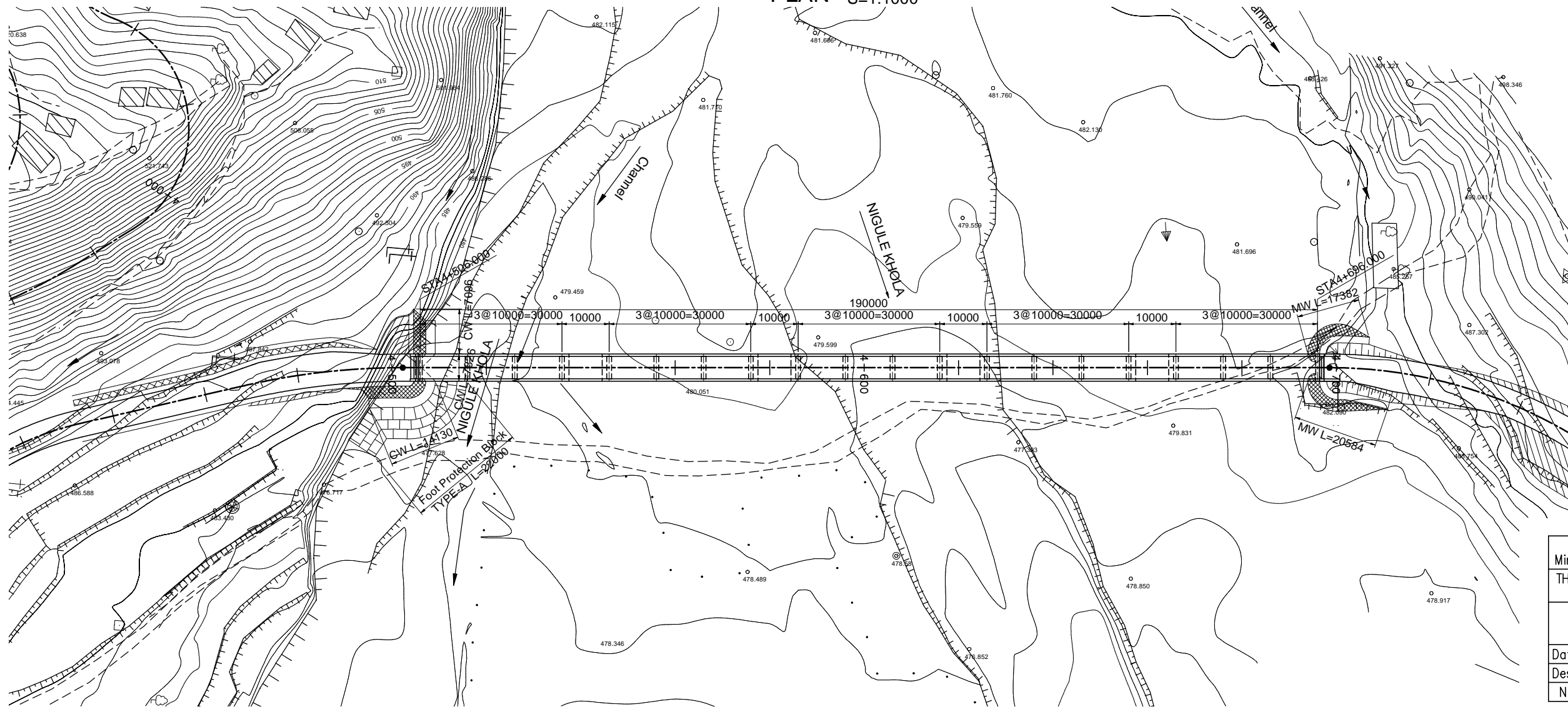
PROFILE S=1:1000

TYPICAL CROSS SECTION

S=1:200



PLAN S=1:1000



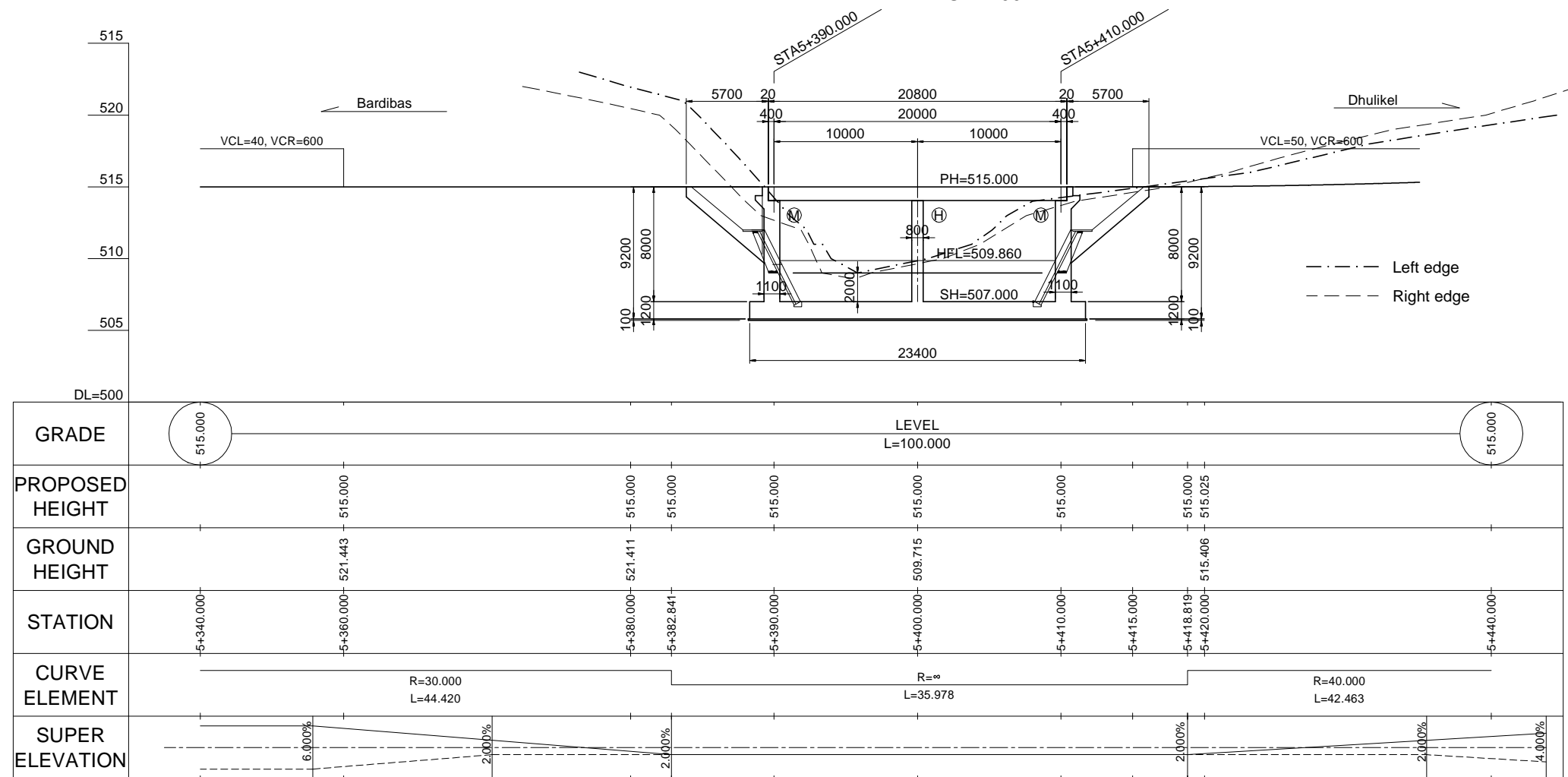
DEPARTMENT OF ROADS
 Ministry of Physical Planning and Works, FDR/ Nepal
 THE PROJECT FOR CONSTRUCTION OF SINDHULI ROAD (Section III)

GENERAL VIEW OF CAUSEWAY #2 (NIGULI KHOLA) Drawing No. E-#2-01

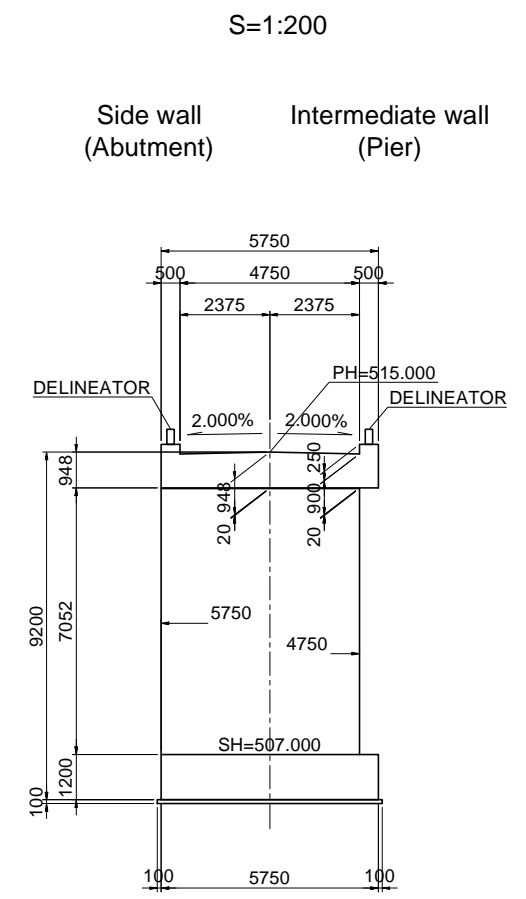
Date: July, 2009 Scale: As Shown
 Designed by: *[Signature]* Approved by: *[Signature]*
 NIPPON KOEI CO., LTD, Consulting Engineers, Japan

GENERAL VIEW OF CAUSEWAY #3 (GADAULE KHOLA)

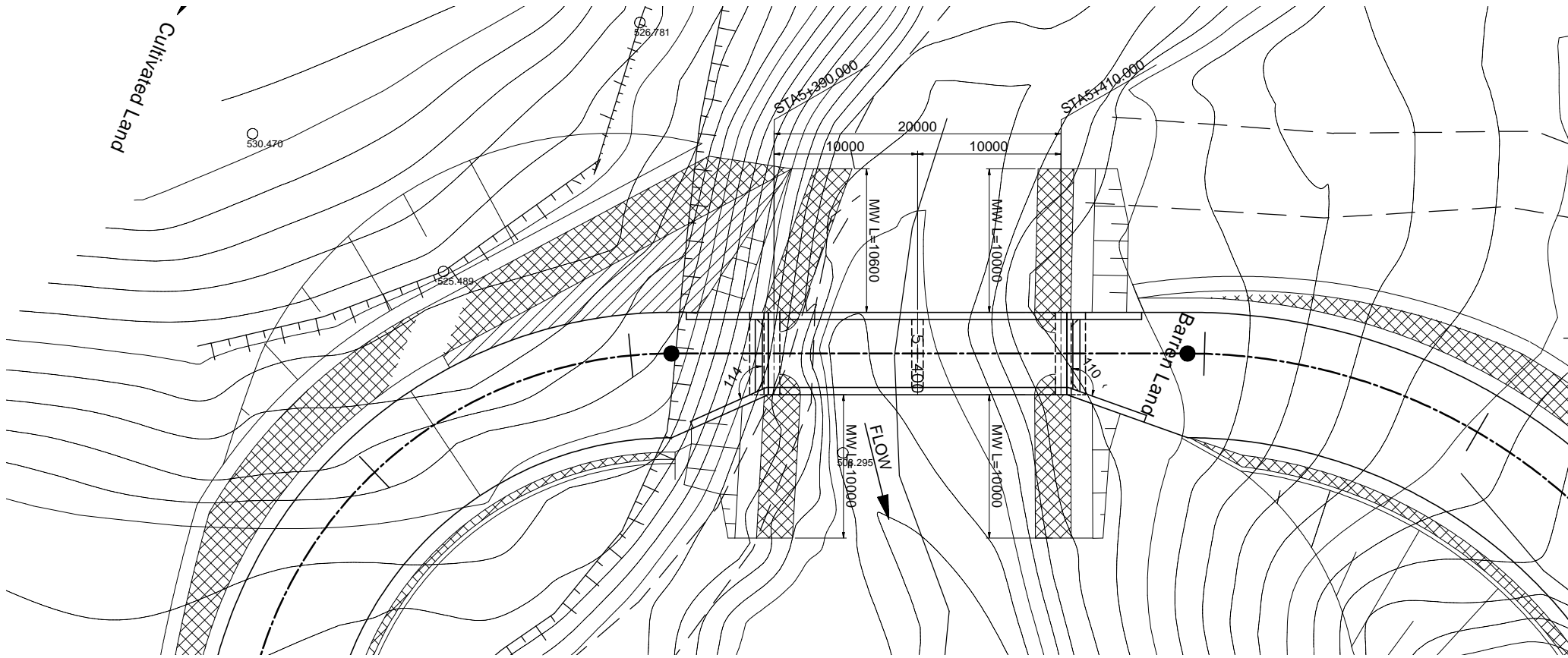
PROFILE S=1:400



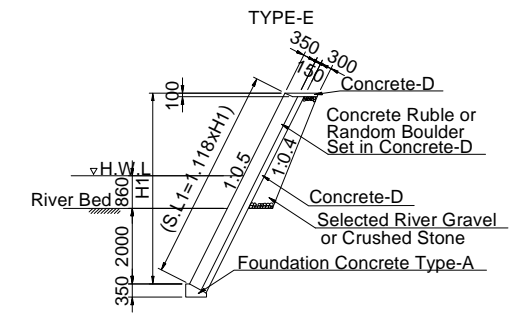
TYPICAL CROSS SECTION S=1:200



PLAN S=1:400



Retaining Wall (Wet Masonry Wall) TYPE-E

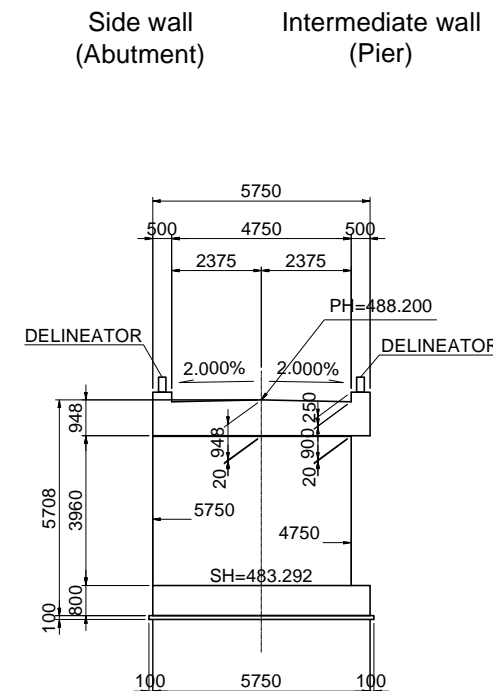
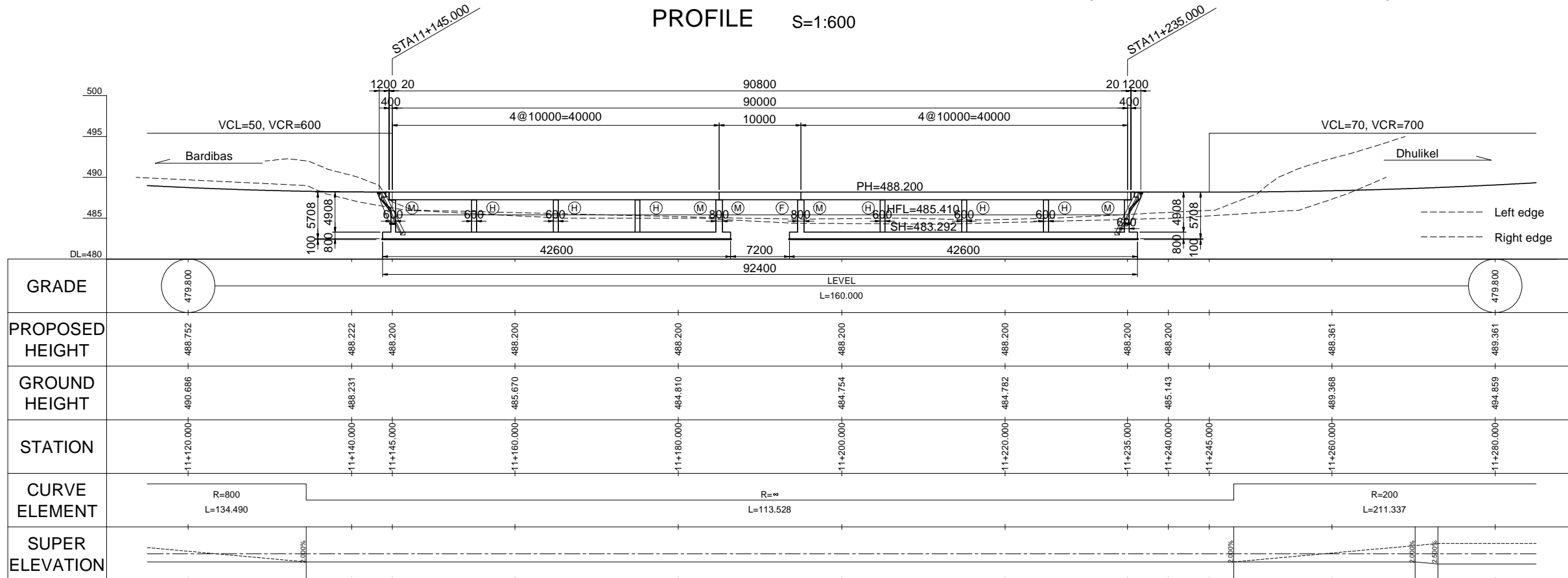


DEPARTMENT OF ROADS Ministry of Physical Planning and Works, FDR/ Nepal THE PROJECT FOR CONSTRUCTION OF SINDHULI ROAD (Section III)	
GENERAL VIEW OF CAUSEWAY #3 (GADAULE KHOLA)	Drawing No. E-#3-01
Date: July, 2009	Scale: As Shown
Designed by: <i>[Signature]</i>	Approved by: <i>[Signature]</i>
NIPPON KOEI CO., LTD, Consulting Engineers, Japan	

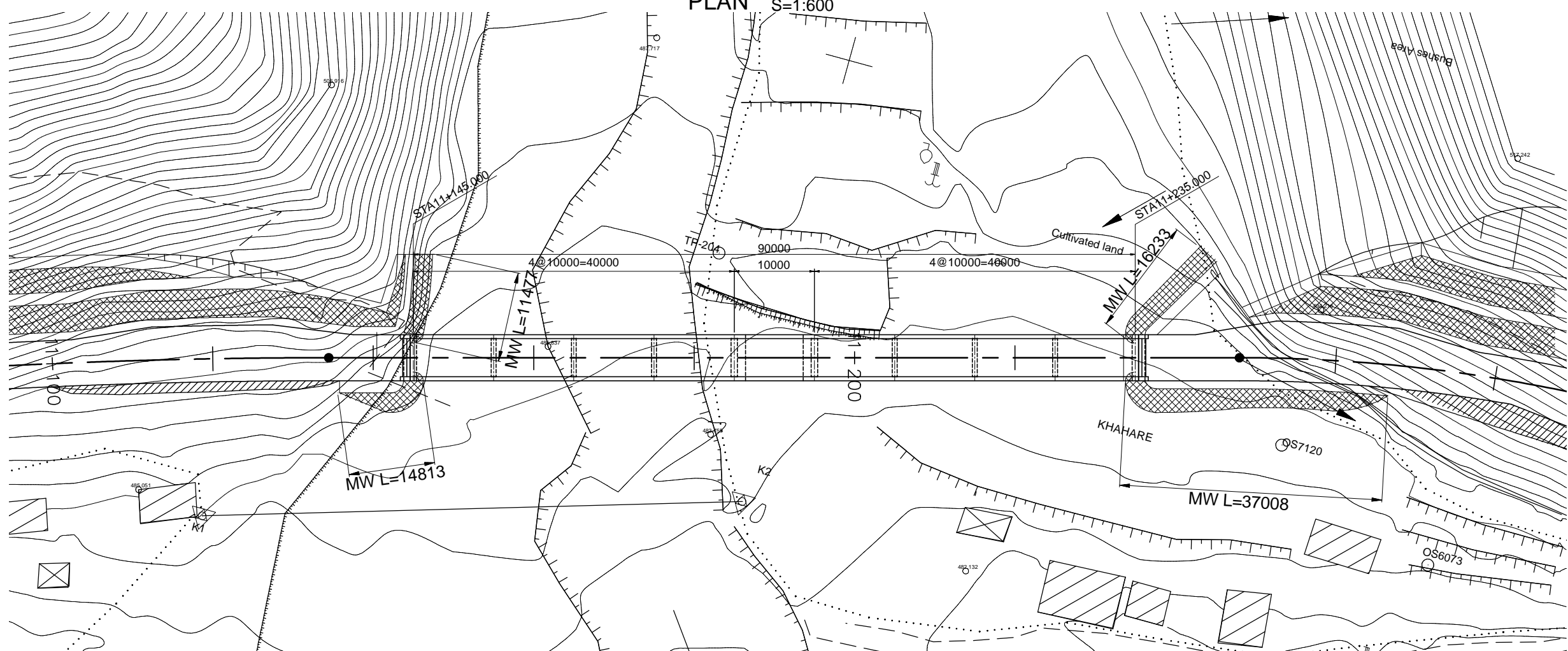
GENERAL VIEW OF CAUSEWAY #5 (KHAHARE KHOLA)

PROFILE S=1:600

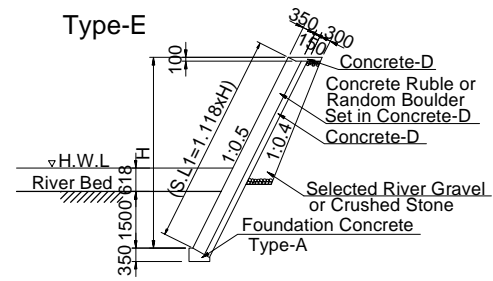
TYPICAL CROSS SECTION S=1:200



PLAN S=1:600



Retaining wall (Wet Masonry Wall)

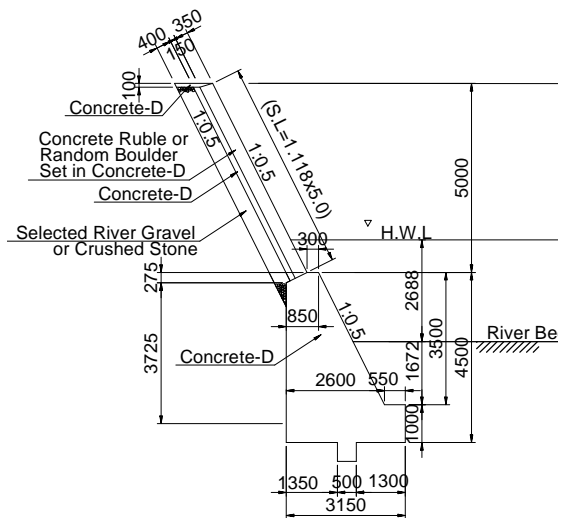
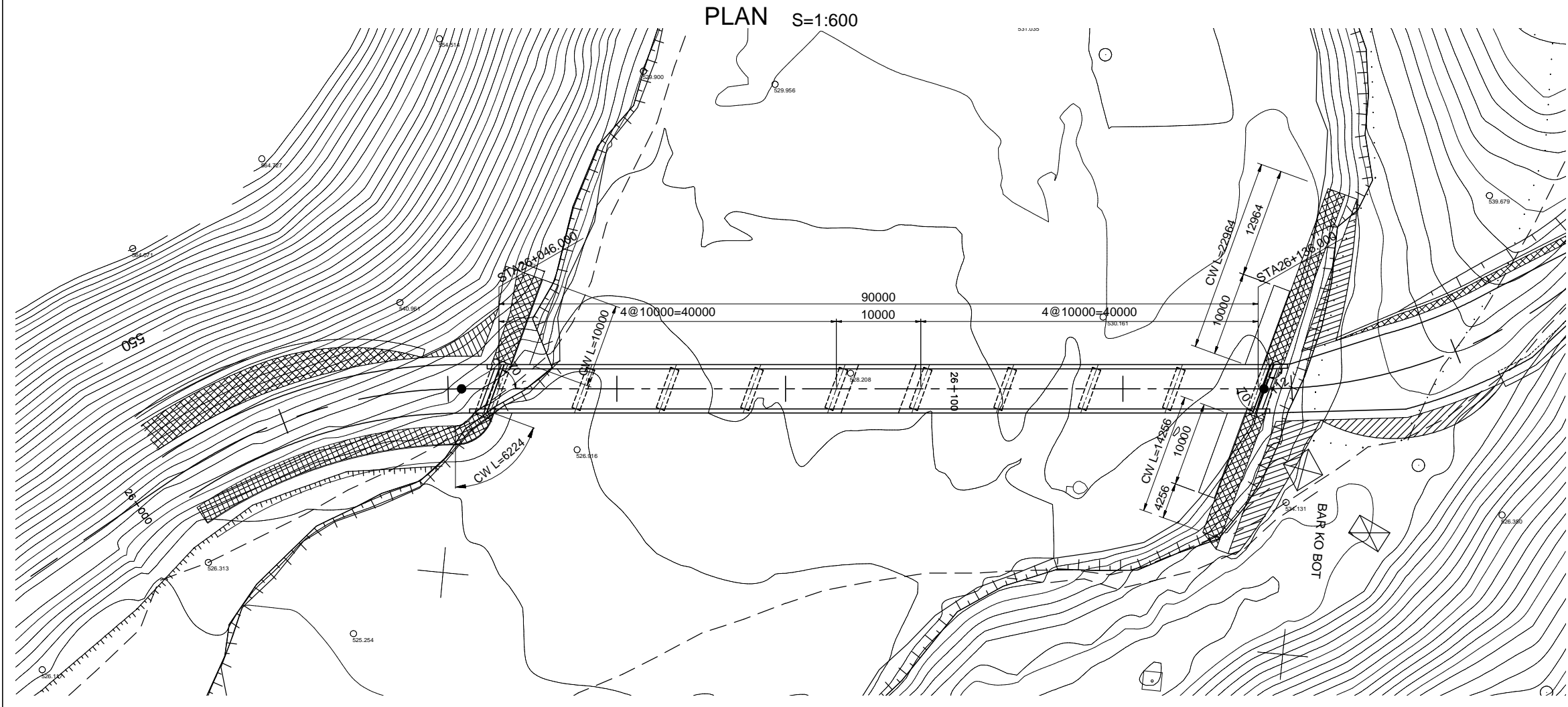
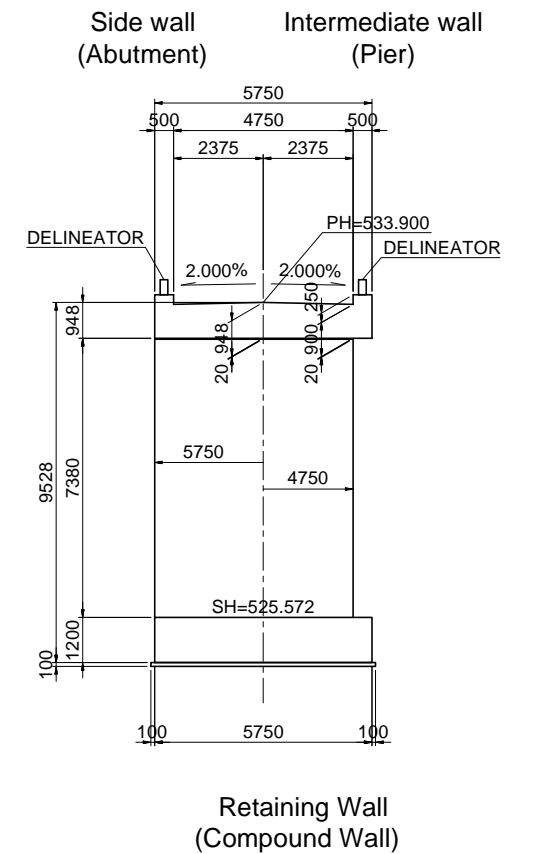
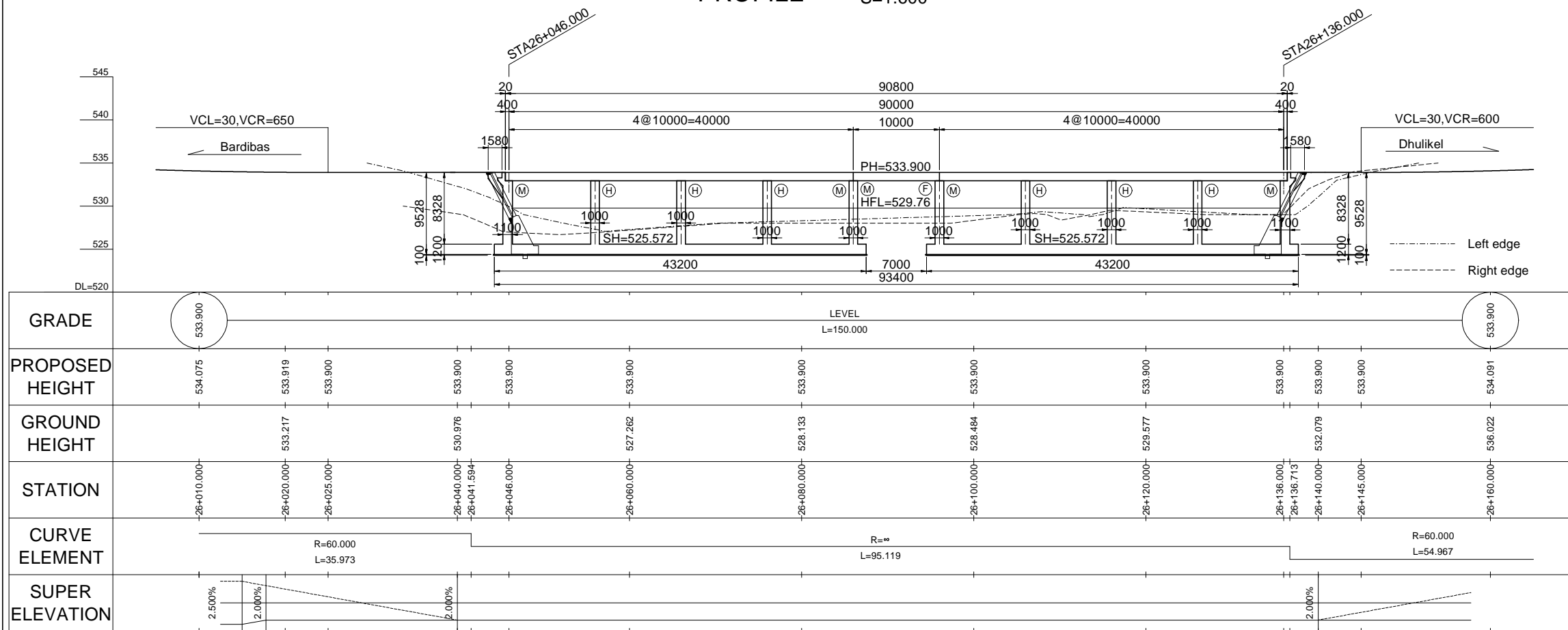


DEPARTMENT OF ROADS Ministry of Physical Planning and Works, FDR/ Nepal THE PROJECT FOR CONSTRUCTION OF SINDHULI ROAD (Section III)	
GENERAL VIEW OF CAUSEWAY #5 (KHAHARE KHOLA)	Drawing No. E-#5-01
Date: July, 2009	Scale: As Shown
Designed by: <i>[Signature]</i>	Approved by: <i>[Signature]</i>
NIPPON KOEI CO., LTD, Consulting Engineers, Japan	

GENERAL VIEW OF CAUSEWAY #9 (SADHI KHOLA)

PROFILE S=1:600

TYPICAL CROSS SECTION S=1:200



DEPARTMENT OF ROADS
Ministry of Physical Planning and Works, FDR/ Nepal
THE PROJECT FOR CONSTRUCTION OF SINDHULI ROAD
(Section III)

GENERAL VIEW OF CAUSEWAY #9 (SADHI KHOLA) Drawing No. E-#9-01

Date: July, 2009 Scale: As Shown

Designed by: *H. Rajan* Approved by:

NIPPON KOEI CO., LTD, Consulting Engineers, Japan