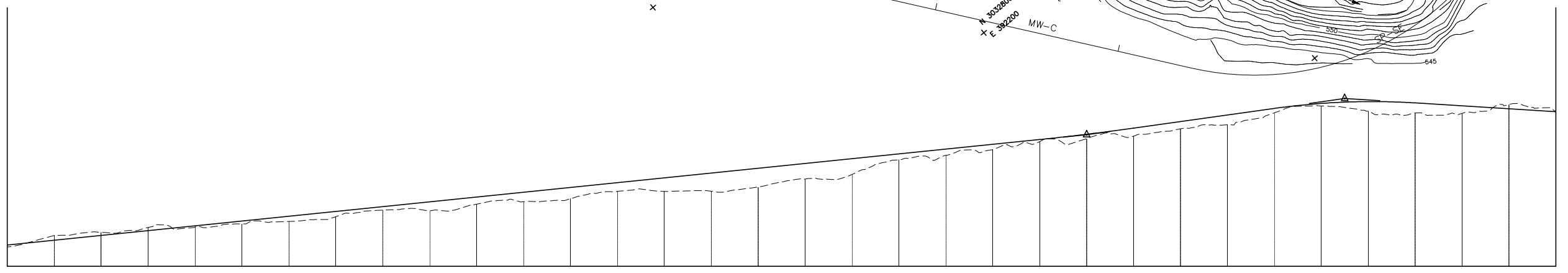
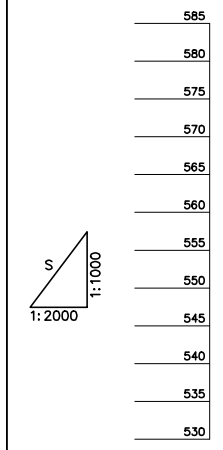
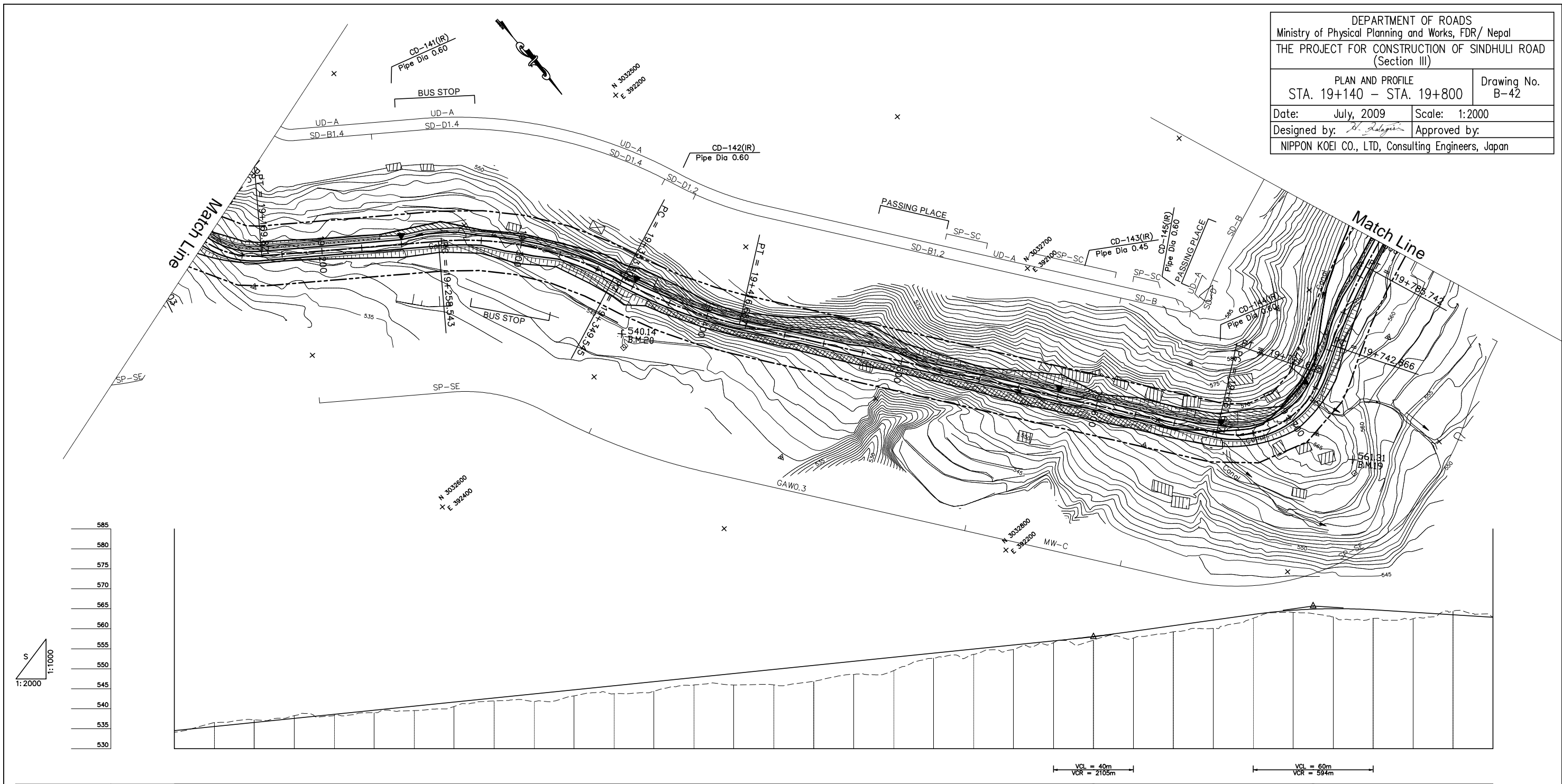


DEPARTMENT OF ROADS
 Ministry of Physical Planning and Works, FDR/ Nepal
 THE PROJECT FOR CONSTRUCTION OF SINDHULI ROAD
 (Section III)

PLAN AND PROFILE
 STA. 19+140 - STA. 19+800

Drawing No. B-42

Date: July, 2009 Scale: 1:2000
 Designed by: *H. Salgotra* Approved by:
 NIPPON KOEI CO., LTD, Consulting Engineers, Japan



GRADE																																			
PROPOSED HEIGHT	19+140	19+160	19+180	19+200	19+220	19+240	19+260	19+280	19+300	19+320	19+340	19+360	19+380	19+400	19+420	19+440	19+460	19+480	19+500	19+520	19+540	19+560	19+580	19+600	19+620	19+640	19+660	19+680	19+700	19+720	19+740	19+760	19+780	19+800	
PROPOSED HEIGHT	534.520	535.540	536.560	537.580	538.600	539.620	540.640	541.660	542.680	543.700	544.720	545.740	546.760	547.780	548.800	549.820	550.840	551.860	552.880	553.900	554.920	555.940	556.960	557.980	559.380	560.780	562.180	563.580	564.980	565.380	566.780	568.180	569.580	570.980	572.380
GROUND HEIGHT	534.095	535.553	537.216	538.249	538.337	539.000	539.528	540.539	541.959	541.807	543.204	543.754	544.365	545.936	545.909	545.969	546.813	548.565	549.538	552.640	553.608	554.835	556.531	557.148	557.682	559.247	560.095	562.637	564.115	565.000	566.608	567.530	568.402	569.073	570.890
STATION	19+140	19+160	19+180	19+200	19+220	19+240	19+260	19+280	19+300	19+320	19+340	19+360	19+380	19+400	19+420	19+440	19+460	19+480	19+500	19+520	19+540	19+560	19+580	19+600	19+620	19+640	19+660	19+680	19+700	19+720	19+740	19+760	19+780	19+800	
CURVE ELEMENT		R=45, L=36.379		L=88.723				R=160, L=91.001		L=4.459				R=240, L=63.083		L=244.949				R=45, L=66.021		L=15.209		R=250, L=42.875		L=158.154									
SUPER ELEVATION		+169.821		+258.543				+349.549+353.604				+416.687						+861.637		+727.658+742.866		+785.742													
WIDENING		1.75m		1.75m				1.25m				1.5m				1.25m																			
DESIGN SPEED		30 Km/h																30 Km/h(40 Km/h)																	