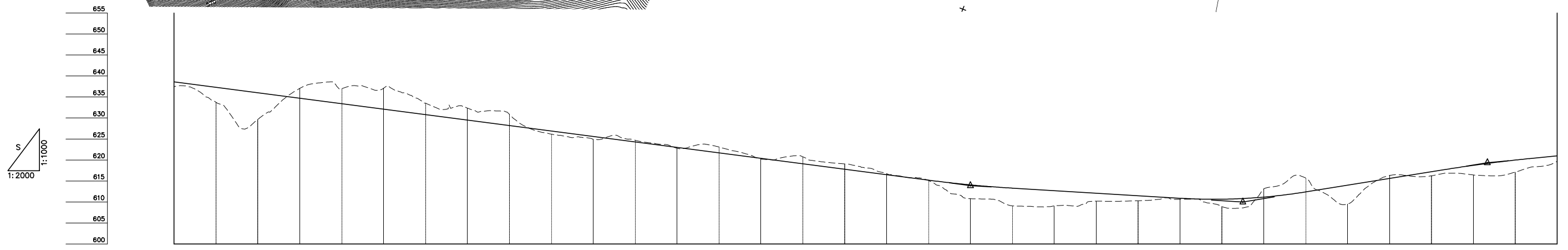
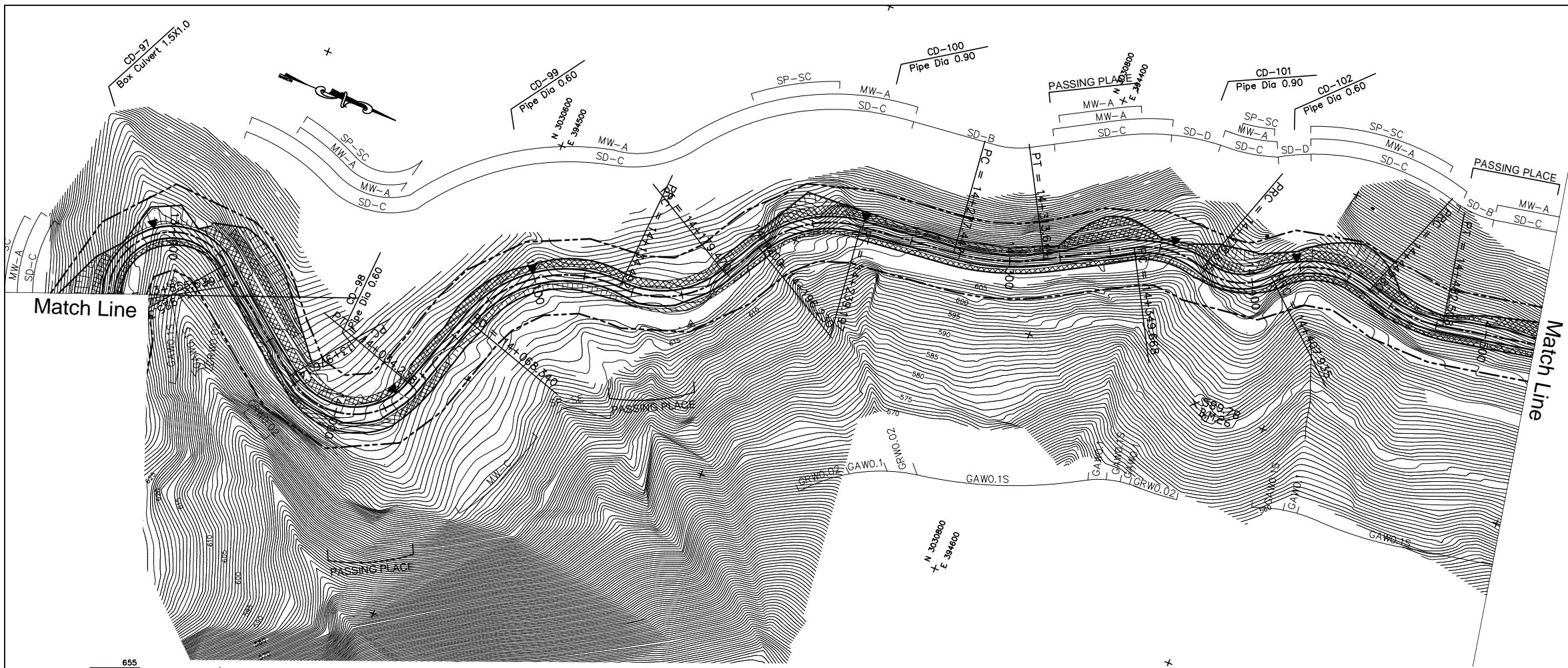


DEPARTMENT OF ROADS
 Ministry of Physical Planning and Works, FDR/ Nepal
 THE PROJECT FOR CONSTRUCTION OF SINDHULI ROAD
 (Section III)

PLAN AND PROFILE
 STA. 13+860 - STA. 14+520

Drawing No. B-33

Date: July, 2009 Scale: 1:2000
 Designed by: *S. Subedi* Approved by:
 NIPPON KOEI CO., LTD, Consulting Engineers, Japan



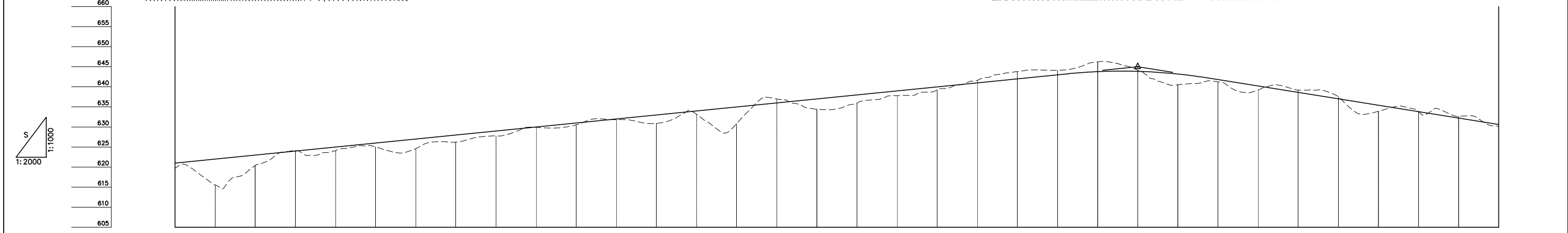
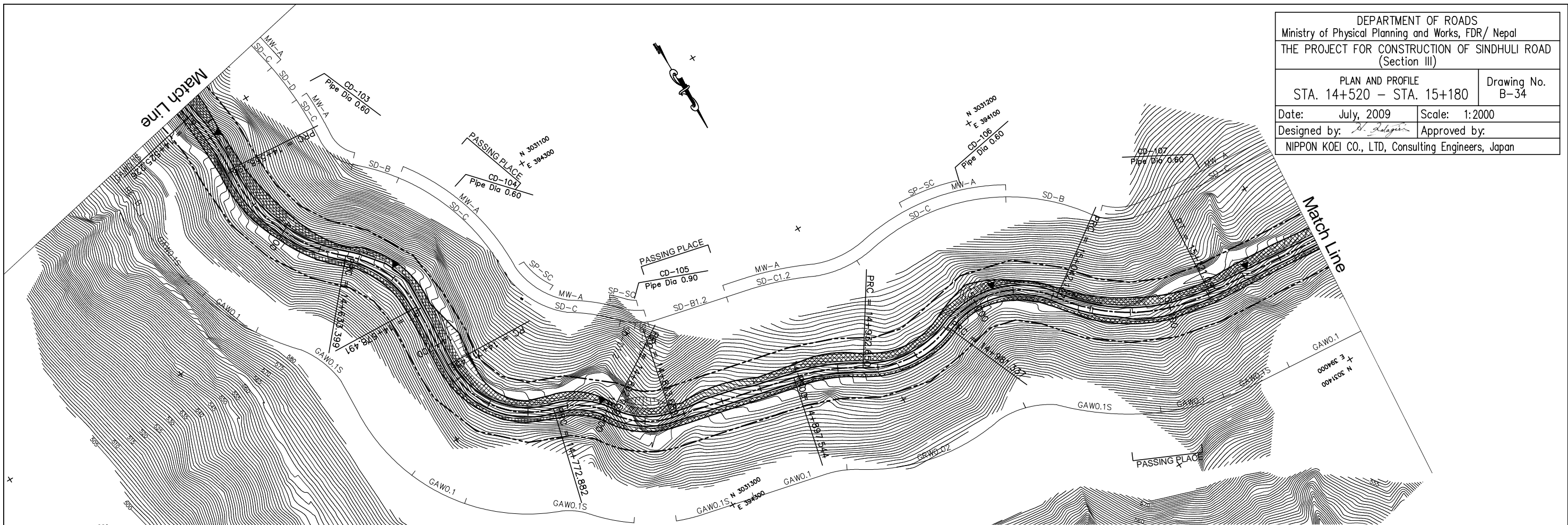
GRADE		-6.500% L=560.000		613.900 L=240.000		-3.000% L=130.000		610.000 L=370.000		8.000% L=116.667		619.333 L=466.667		5.000% L=613.333																									
PROPOSED HEIGHT		638.600	637.300	636.000	634.700	633.400	632.100	630.800	629.500	628.200	626.900	625.600	624.300	623.000	621.700	620.400	619.100	617.800	616.500	615.200	614.075	613.300	612.700	612.100	611.500	610.900	610.667	610.167	612.400	614.000	615.600	617.200	618.733	619.983	621.000				
GROUND HEIGHT		637.448	633.761	629.675	637.048	636.964	637.076	633.547	632.364	630.892	626.163	625.000	624.709	622.779	623.113	620.246	620.776	619.064	616.751	615.119	610.776	609.074	613.300	609.078	610.213	610.292	610.648	608.923	613.110	615.691	609.507	616.244	616.423	617.125	619.716	619.716			
STATION		13+860	13+880	13+900	13+920	13+940	13+960	13+980	14+000	14+020	14+040	14+060	14+080	14+100	14+120	14+140	14+160	14+180	14+200	14+220	14+240	14+260	14+280	14+300	14+320	14+340	14+360	14+380	14+400	14+420	14+440	14+460	14+480	14+500	14+520				
CURVE ELEMENT		R=25 L=69.676		L=50.825		R=30 L=58.098		L=34.101		R=50 L=66.152		R=40 L=44.978		L=16.761		R=45 L=42.966		L=38.250		R=90 L=36.197		L=36.025		R=35 L=29.147		R=25 L=29.119		R=35 L=41.866		R=60 L=32.707		L=42.718							
SUPER ELEVATION	Left	6.0%	6.0%	0.0%	2.5%	2.5%	6.0%	6.0%	2.5%	2.5%	6.0%	6.0%	2.5%	2.5%	0.0%	0.0%	2.5%	2.5%	0.0%	0.0%	2.5%	2.5%	0.0%	0.0%	2.5%	2.5%	0.0%	0.0%	2.5%	2.5%	0.0%	0.0%	2.5%	2.5%	0.0%	0.0%			
Right		0.0%	0.0%	6.0%	6.0%	6.0%	0.0%	0.0%	6.0%	6.0%	6.0%	6.0%	6.0%	6.0%	6.0%	6.0%	6.0%	6.0%	6.0%	6.0%	6.0%	6.0%	6.0%	6.0%	6.0%	6.0%	6.0%	6.0%	6.0%	6.0%	6.0%	6.0%	6.0%	6.0%	6.0%	6.0%			
WIDENING		0.5m		1.25m		1.25m		1.25m		1.25m		1.25m		1.25m		1.25m		1.25m		1.25m		1.25m		1.0m		1.25m		1.25m		1.25m		1.25m		1.25m					
DESIGN SPEED		30 Km/h																																					

DEPARTMENT OF ROADS
 Ministry of Physical Planning and Works, FDR/ Nepal
 THE PROJECT FOR CONSTRUCTION OF SINDHULI ROAD
 (Section III)

PLAN AND PROFILE
 STA. 14+520 - STA. 15+180

Drawing No. B-34

Date: July, 2009 Scale: 1:2000
 Designed by: *S. Subedi* Approved by:
 NIPPON KOEI CO., LTD, Consulting Engineers, Japan



GRADE		5.000% L=513.333		645.000 15+000.000															-8.000% L=700.000																	
PROPOSED HEIGHT		621.000	622.000	623.000	624.000	625.000	626.000	627.000	628.000	629.000	630.000	631.000	632.000	633.000	634.000	635.000	636.000	637.000	638.000	639.000	640.000	641.000	642.000	643.000	643.791	643.863	643.191	641.800	640.200	638.600	637.000	635.400	633.800	632.200	630.600	
GROUND HEIGHT		619.716	615.555	620.390	624.137	624.056	625.013	624.599	626.203	627.758	629.891	630.527	631.811	630.900	633.168	630.820	636.970	634.422	635.946	637.818	639.261	641.632	643.805	644.112	646.243	644.187	640.514	641.248	639.211	639.162	637.543	633.903	633.853	632.638	630.200	630.600
STATION		14+520	14+540	14+560	14+580	14+600	14+620	14+640	14+660	14+680	14+700	14+720	14+740	14+760	14+780	14+800	14+820	14+840	14+860	14+880	14+900	14+920	14+940	14+960	14+980	15+000	15+020	15+040	15+060	15+080	15+100	15+120	15+140	15+160	15+180	
CURVE ELEMENT		L=42.718	R=120 L=33.570	R=80 L=74.602	R=50 L=45.093	L=32.965	R=45 L=61.425	R=40 L=29.887	R=40 L=30.920	L=63.855	R=100 L=35.106	R=50 L=48.687	R=45 L=60.800	R=90 L=78.944	L=65.041																					
SUPER ELEVATION	Left Right																																			
WIDENING																																				
DESIGN SPEED		30 Km/h																																		