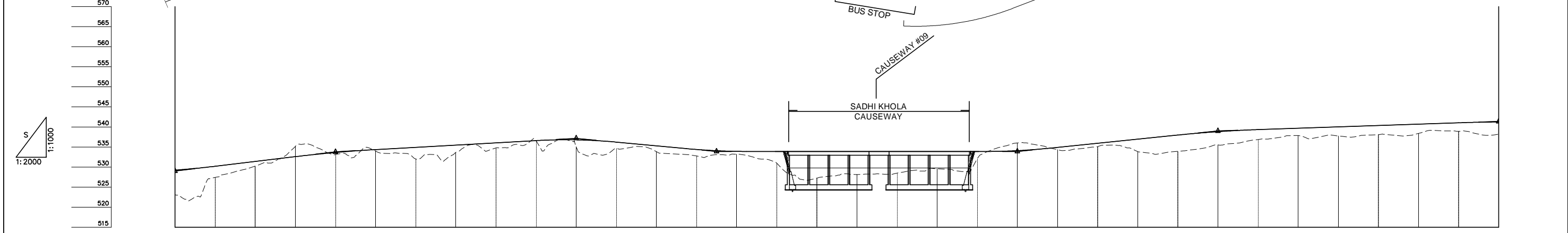
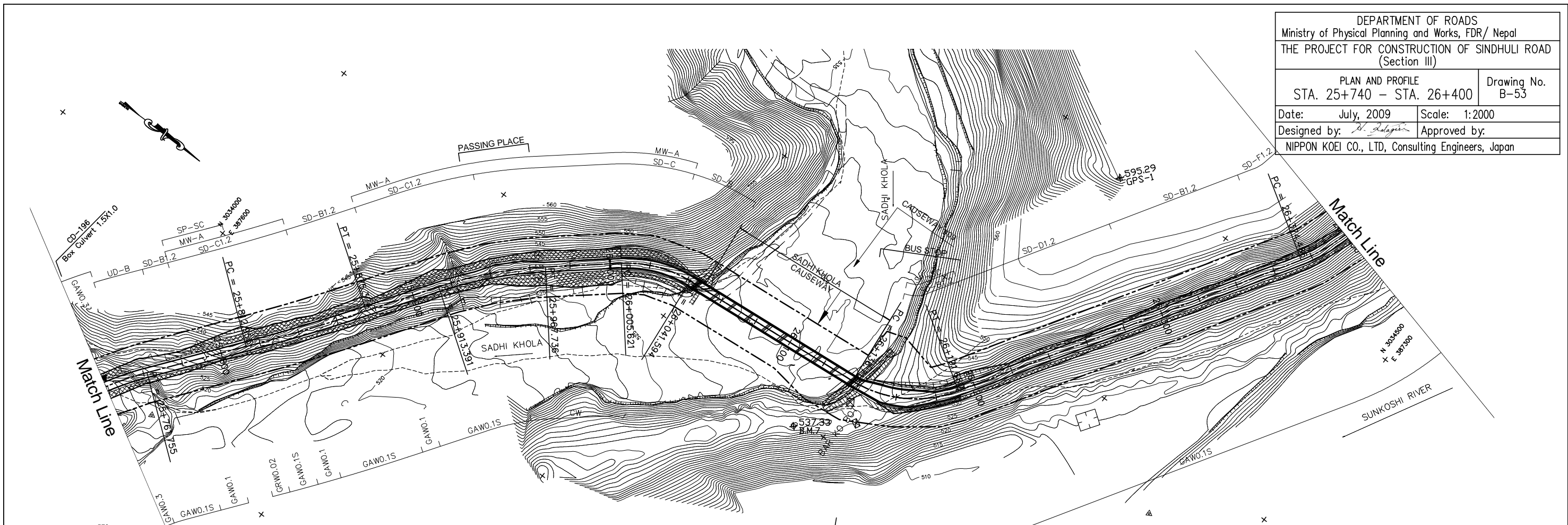


DEPARTMENT OF ROADS
 Ministry of Physical Planning and Works, FDR/ Nepal
 THE PROJECT FOR CONSTRUCTION OF SINDHULI ROAD
 (Section III)

PLAN AND PROFILE
 STA. 25+740 - STA. 26+400

Drawing No. B-53

Date: July, 2009 Scale: 1:2000
 Designed by: *S. Subedi* Approved by:
 NIPPON KOEI CO., LTD, Consulting Engineers, Japan



VCL = 40m VCR = 833m	VCL = 40m VCR = 1250m	VCL = 40m VCR = 536m	VCL = 30m VCR = 644m	VCL = 30m VCR = 588m	VCL = 40m VCR = 1178m	VCL = 40m VCR = 1481m
-------------------------	--------------------------	-------------------------	-------------------------	-------------------------	--------------------------	--------------------------

GRADE	529.000 25+740.000		6.000% L=80.000		533.800 25+820.000		2.800% L=120.000		537.160 25+940.000		-4.65% L=70.000		533.900 26+000.000		0.000% L=150.000		533.900 26+160.000		-5.100% L=100.000		539.000 26+260.000		1.700% L=140.000		541.380 26+400.000									
PROPOSED HEIGHT	529.240	530.200	531.400	532.600	533.640	534.360	534.920	535.480	536.040	536.600	537.787	536.229	535.297	534.385	533.919	533.900	533.900	533.900	534.091	534.920	535.940	536.960	537.980	538.830	539.340	539.680	540.020	540.360	540.700	541.040	541.245			
GROUND HEIGHT	523.080	527.414	530.261	535.173	533.138	533.998	532.021	533.627	534.775	536.646	535.126	534.704	533.848	532.775	533.217	530.976	527.262	528.133	528.484	529.577	532.079	536.022	533.849	533.926	535.544	536.860	537.762	538.066	538.389	538.914	538.198			
STATION	25+740	25+760	25+780	25+800	25+820	25+840	25+860	25+880	25+900	25+920	25+940	25+960	25+980	26+000	26+020	26+040	26+060	26+080	26+100	26+120	26+140	26+160	26+180	26+200	26+220	26+240	26+260	26+280	26+300	26+320	26+340	26+360	26+380	26+400
CURVE ELEMENT	R=150 L=48.670		L=51.200		R=1000 L=62.419		L=38.018		R=200 L=54.344		L=37.885		R=60 L=35.973		L=95.119		R=60 L=54.967		L=136.713		R=60 L=54.967		L=182.806		R=80 L=28.440		L=374.486							
SUPER ELEVATION	Left		Right		Left		Right		Left		Right		Left		Right		Left		Right		Left		Right		Left		Right		Left		Right			
WIDENING					1.25m				1.25m						1.75m		1.75m																	
DESIGN SPEED	30 Km/h																																	