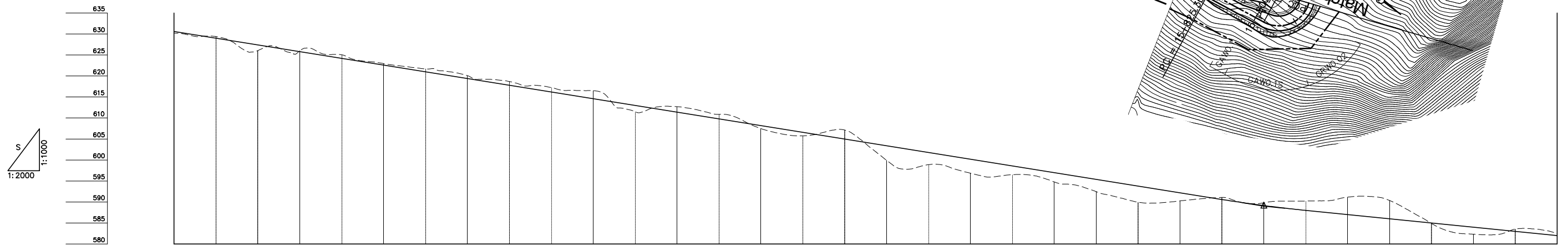
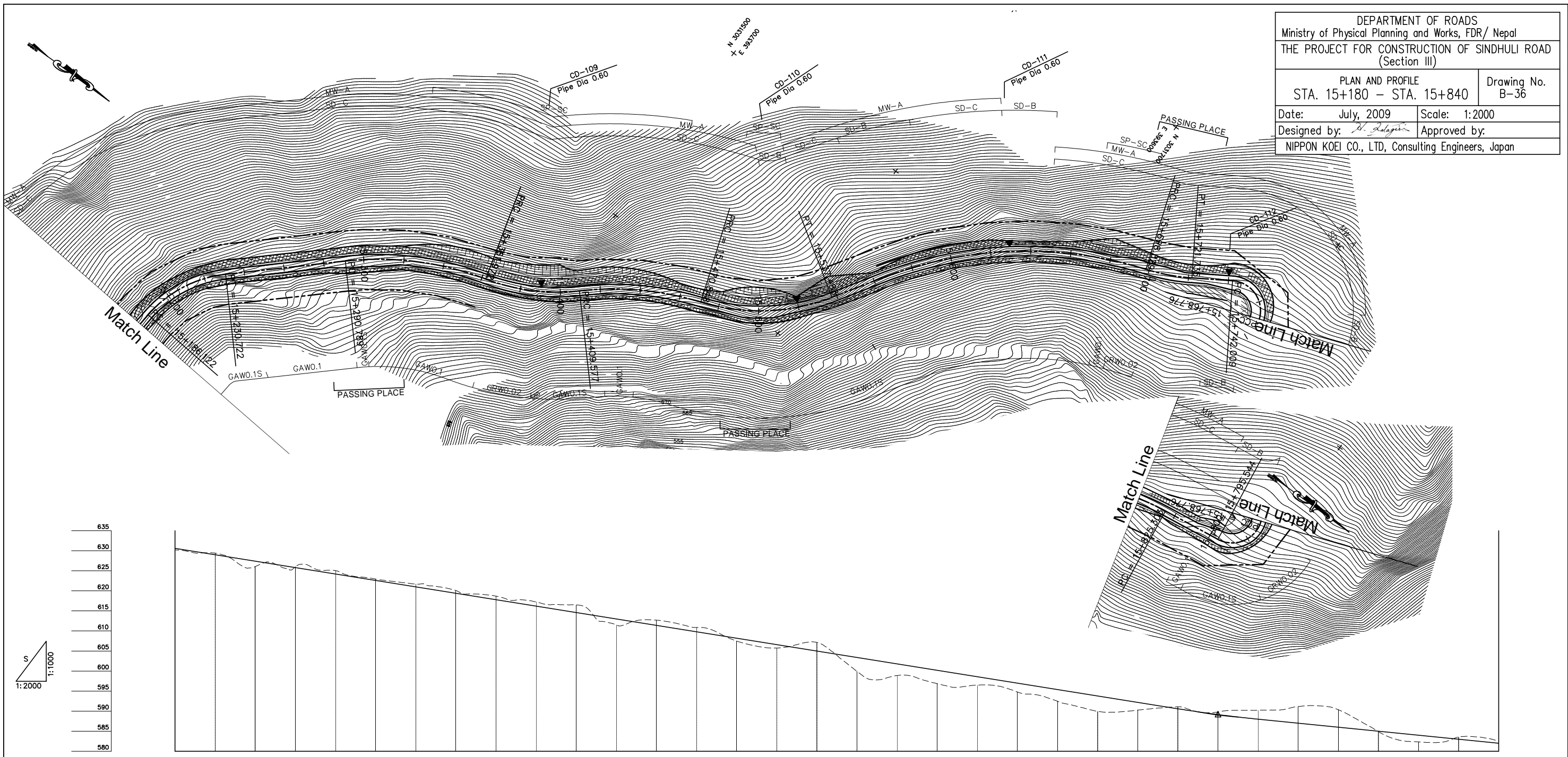


DEPARTMENT OF ROADS
 Ministry of Physical Planning and Works, FDR/ Nepal
 THE PROJECT FOR CONSTRUCTION OF SINDHULI ROAD
 (Section III)

PLAN AND PROFILE
 STA. 15+180 - STA. 15+840

Drawing No. B-36

Date: July, 2009 Scale: 1:2000
 Designed by: *S. Salgotra* Approved by:
 NIPPON KOEI CO., LTD, Consulting Engineers, Japan



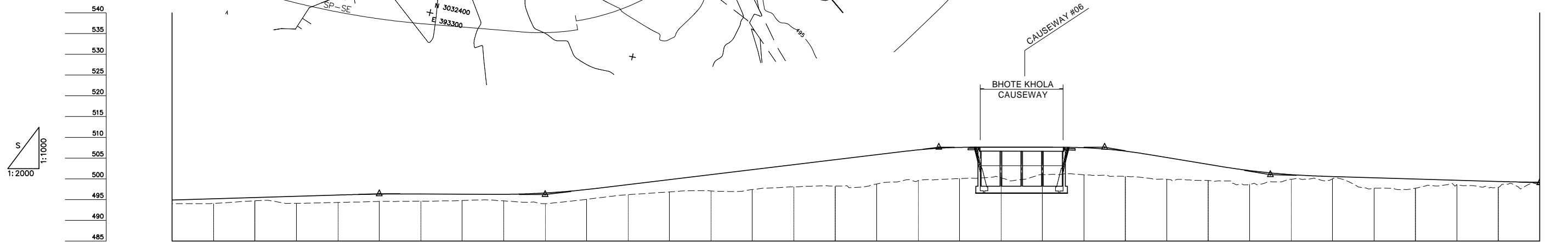
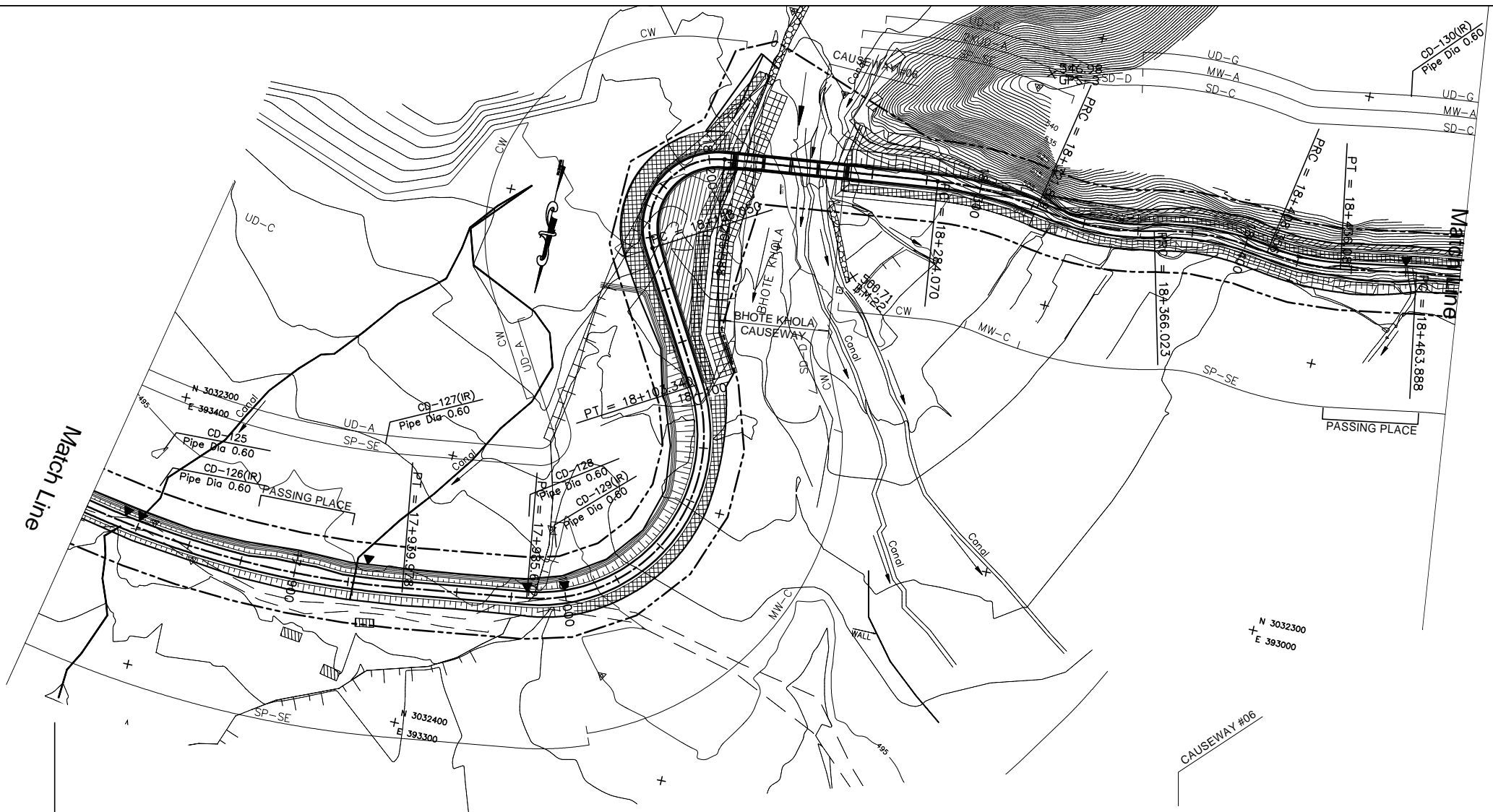
GRADE	-8.000% L=700.000		589.000 15+700.000															-5.000% L=560.000																
PROPOSED HEIGHT	630.600	629.000	627.400	625.800	624.200	622.600	621.000	619.400	617.800	616.200	614.600	613.000	611.400	609.800	608.200	606.600	605.000	603.400	601.800	600.200	598.600	597.000	595.400	593.800	592.200	590.600	589.150	588.000	587.000	586.000	585.000	584.000	583.000	582.000
GROUND HEIGHT	630.200	629.395	628.059	626.026	625.052	622.946	621.695	620.088	618.682	617.243	616.505	611.516	612.691	610.873	607.485	605.741	607.130	599.913	598.893	596.853	596.486	594.778	592.471	589.967	591.085	589.795	590.221	591.152	590.364	584.906	582.335	583.548	582.497	
STATION	15+180	15+200	15+220	15+240	15+260	15+280	15+300	15+320	15+340	15+360	15+380	15+400	15+420	15+440	15+460	15+480	15+500	15+520	15+540	15+560	15+580	15+600	15+620	15+640	15+660	15+680	15+700	15+720	15+740	15+760	15+780	15+800	15+820	15+840
CURVE ELEMENT	L=65.041	R=60 L=44.600	L=60.067	R=150 L=71.183	R=100 L=47.606	R=150 L=61.270	R=100 L=66.636	L=26.442	R=200 L=134.403	R=100 L=23.406	L=20.274	R=15 L=26.768	R=15 L=26.768	L=29.759	R=120 L=127.995																			
SUPER ELEVATION	<div style="display: flex; justify-content: space-between;"> Left Right </div>																																	
WIDENING	<div style="display: flex; justify-content: space-around;"> 1.25m 1.25m 1.25m 2.25m </div>																																	
DESIGN SPEED	30 Km/h																20 Km/h											30 Km/h						

DEPARTMENT OF ROADS
 Ministry of Physical Planning and Works, FDR/ Nepal
 THE PROJECT FOR CONSTRUCTION OF SINDHULI ROAD
 (Section III)

PLAN AND PROFILE
 STA. 17+820 - STA. 18+480

Drawing No. B-40

Date: July, 2009 Scale: 1:2000
 Designed by: *H. Salgotra* Approved by:
 NIPPON KOEI CO., LTD, Consulting Engineers, Japan



GRADE		1.500% L=240.000	496.400 17+920.000	-0.250% L=80.000	496.200 18+000.000	6.000% L=190.000	507.600 18+190.000	0.000% L=80.000	507.600 18+270.000	-8.238% L=80.000	501.010 18+350.000	-1.500% L=130.000	499.060 18+480.000
PROPOSED HEIGHT			494.900		494.900		499.975		507.600		501.012		499.178
GROUND HEIGHT			494.000		494.000		499.553		500.239		499.894		498.661
STATION			17+820		18+000		18+180		18+260		18+360		18+480
CURVE ELEMENT		R=350 L=131.351		L=45.694	R=60 L=117.669		R=25 L=49.538		L=78.481	R=120 L=37.749	R=100 L=42.333	R=80 L=27.725	R=300 L=51.289
SUPER ELEVATION	Left Right			+939.978	+985.672	+103.340	+156.050	+205.588	+284.070	+321.819	+366.023	+408.356	+436.081
WIDENING			1.25m				0.5m					1.25m	
DESIGN SPEED							30 Km/h						