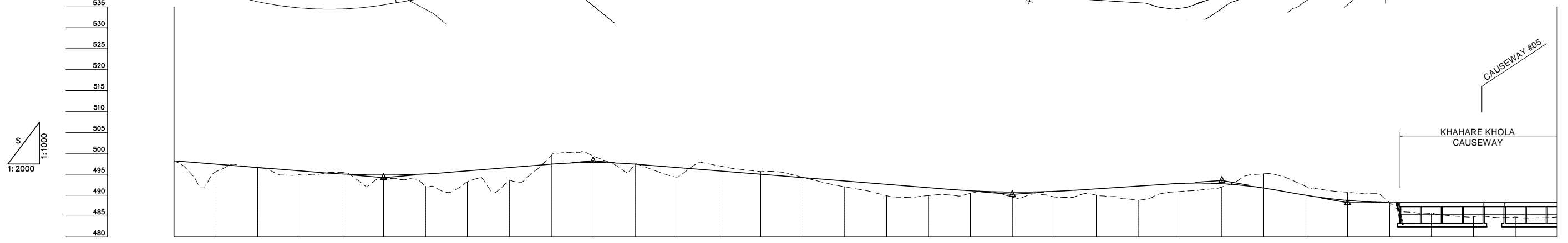
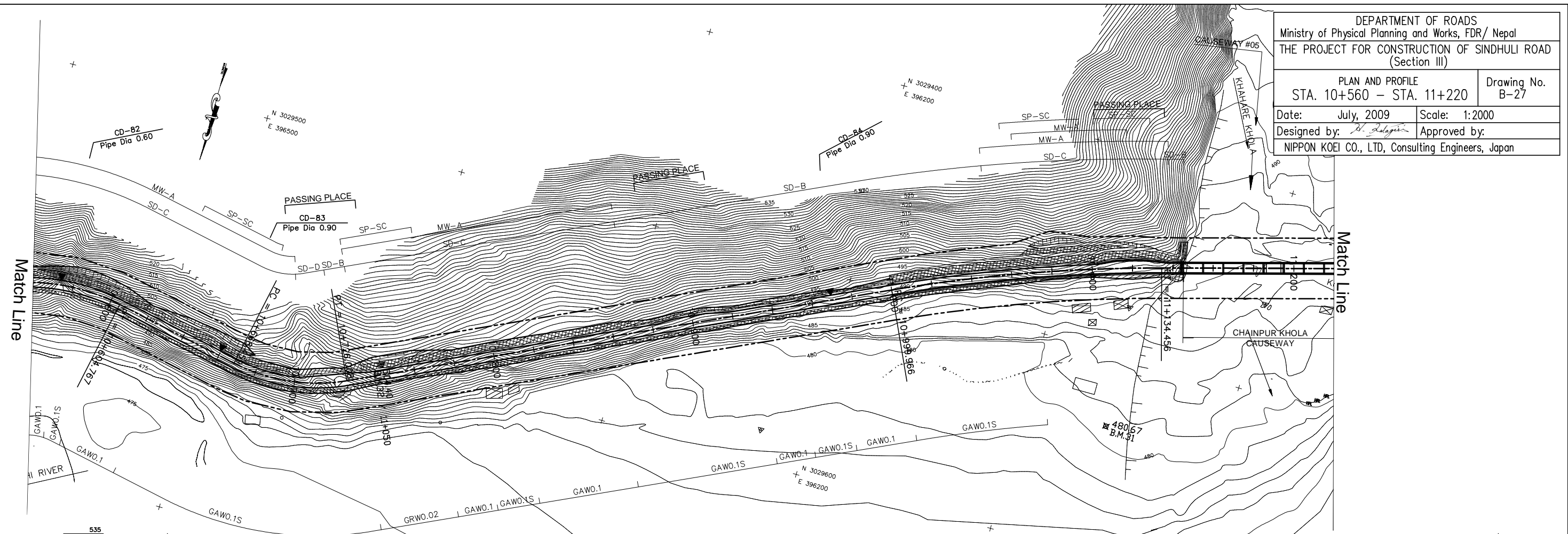


DEPARTMENT OF ROADS
 Ministry of Physical Planning and Works, FDR/ Nepal
 THE PROJECT FOR CONSTRUCTION OF SINDHULI ROAD
 (Section III)

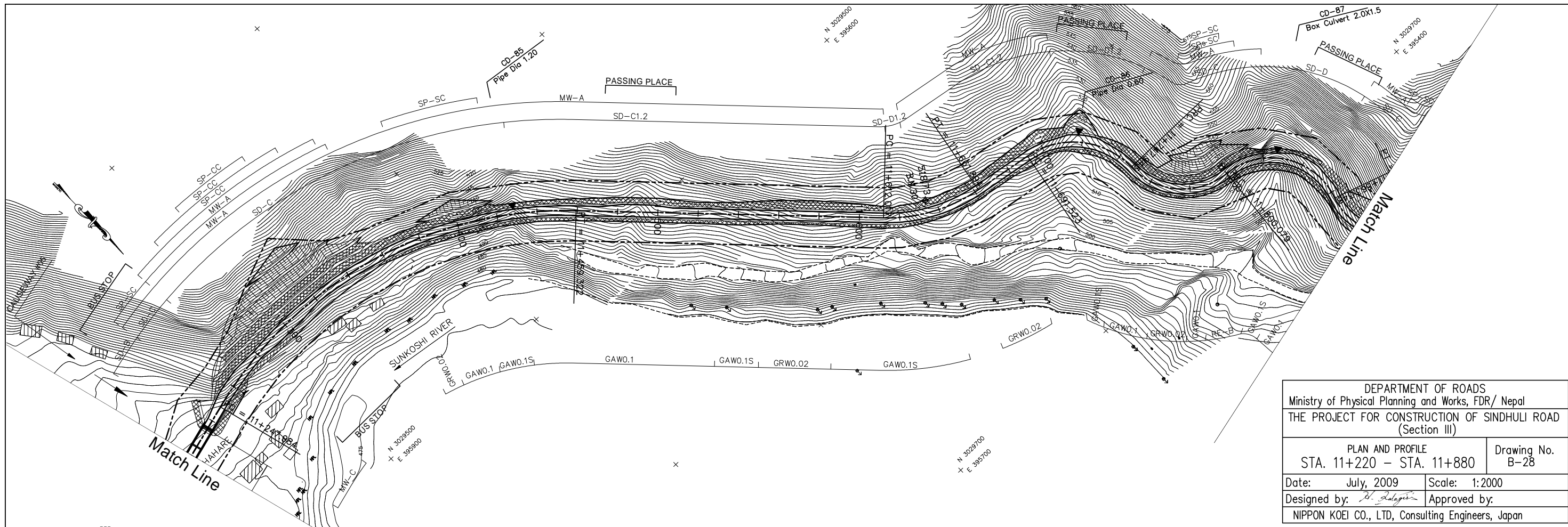
PLAN AND PROFILE
 STA. 10+560 - STA. 11+220

Drawing No. B-27

Date: July, 2009 Scale: 1:2000
 Designed by: *S. Subedi* Approved by:
 NIPPON KOEI CO., LTD, Consulting Engineers, Japan



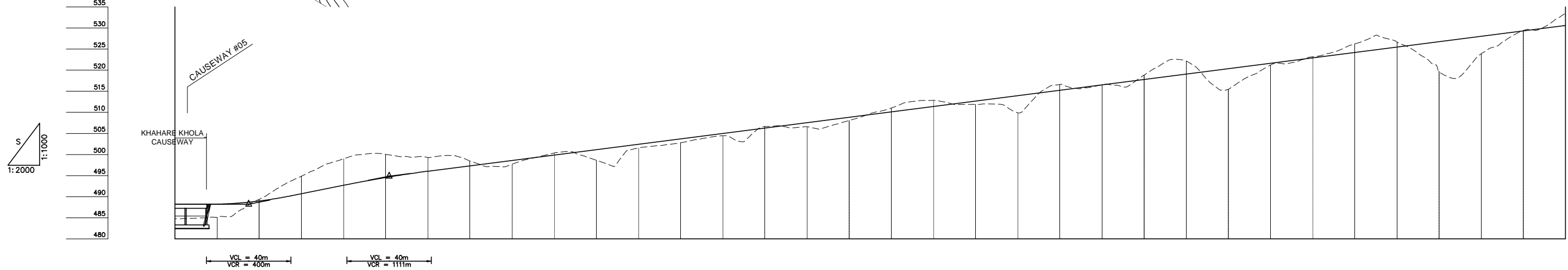
GRADE	PROPOSED HEIGHT	GROUND HEIGHT	STATION	CURVE ELEMENT	SUPER ELEVATION	WIDENING	DESIGN SPEED
499.000 10+540.000	488.200	498.437	10+560	R=100 L=77.466	Left: 0.00% Right: 0.00%		30 Km/h(40 Km/h)
-4.000% L=120.000	497.400	495.589	10+580				
494.200 10+660.000	496.600	496.534	10+600				30 Km/h(40 Km/h)
4.000% L=100.000	495.800	494.964	10+620				
494.200 10+760.000	495.067	495.426	10+640				30 Km/h(40 Km/h)
-4.000% L=200.000	494.800	493.944	10+660				
498.200 10+860.000	495.067	492.188	10+680				30 Km/h(40 Km/h)
4.000% L=100.000	495.800	493.192	10+700				
498.200 10+960.000	496.600	493.564	10+720				30 Km/h(40 Km/h)
-4.000% L=200.000	496.400	493.426	10+740				
490.200 10+960.000	497.400	499.372	10+760				30 Km/h(40 Km/h)
3.300% L=100.000	497.800	497.382	10+780				
493.500 11+060.000	496.600	494.314	10+800				30 Km/h(40 Km/h)
-8.833% L=60.000	495.800	497.016	10+820				
488.200 11+120.000	495.000	495.638	10+840				30 Km/h(40 Km/h)
0.000% L=135.000	494.200	494.264	10+860				
490.200 10+960.000	493.400	492.018	10+880				30 Km/h(40 Km/h)
	492.600	489.900	10+900				
	491.800	489.916	10+920				30 Km/h(40 Km/h)
	491.061	490.428	10+940				
	490.748	489.560	10+960				30 Km/h(40 Km/h)
	490.921	489.583	10+980				
	491.520	490.040	11+000				30 Km/h(40 Km/h)
	492.180	488.779	11+020				
	492.810	490.892	11+040				30 Km/h(40 Km/h)
	492.742	491.979	11+060				
	491.703	495.099	11+080				30 Km/h(40 Km/h)
	489.989	492.113	11+100				
	488.752	490.686	11+120				30 Km/h(40 Km/h)
	488.222	488.231	11+140				
	488.200	485.670	11+160				30 Km/h(40 Km/h)
	488.200	484.810	11+180				
	488.200	484.754	11+200				30 Km/h(40 Km/h)
	488.200	484.782	11+220				



DEPARTMENT OF ROADS
 Ministry of Physical Planning and Works, FDR/ Nepal
 THE PROJECT FOR CONSTRUCTION OF SINDHULI ROAD
 (Section III)

PLAN AND PROFILE
 STA. 11+220 - STA. 11+880

Date: July, 2009 Scale: 1:2000
 Designed by: *H. Salgia* Approved by:
 NIPPON KOEI CO., LTD, Consulting Engineers, Japan



GRADE	0.000% L=135.000		488.200 11+255.000		10.000% L=66.667		494.867 11+321.667		6.400% L=658.333																									
PROPOSED HEIGHT	488.200	488.231	488.981	490.700	492.700	494.549	496.039	497.320	498.600	489.880	501.160	502.440	503.720	505.000	506.280	507.560	508.840	510.120	511.400	512.680	513.960	515.240	516.520	517.800	519.080	520.360	521.640	522.920	524.200	525.480	526.760	528.040	529.320	530.600
GROUND HEIGHT	484.782	485.143	489.368	494.859	499.019	500.051	499.298	498.453	497.734	500.358	498.636	501.551	502.799	504.474	506.672	506.587	508.070	511.039	512.834	511.892	509.889	516.581	516.544	518.840	522.145	515.480	521.219	523.188	526.226	526.704	519.740	523.905	529.387	533.543
STATION	11+220	11+240	11+260	11+280	11+300	11+320	11+340	11+360	11+380	11+400	11+420	11+440	11+460	11+480	11+500	11+520	11+540	11+560	11+580	11+600	11+620	11+640	11+660	11+680	11+700	11+720	11+740	11+760	11+780	11+800	11+820	11+840	11+860	11+880
CURVE ELEMENT	L=113.528		R=200 L=211.337		L=152.695												R=80 L=49.877		L=29.628		R=40 L=56.420		R=35 L=52.136		R=35 L=63.269		R=30 L=47.392							
SUPER ELEVATION	+247.984				+459.322												+612.017		+661.894		+691.523		+747.943		+800.079		+863.348							
WIDENING	1.75m		1.75m		1.25m												1.25m		1.25m		1.25m		1.25m		0.5m									
DESIGN SPEED	Running speed		30 Km/h(40 Km/h)												30 Km/h																			