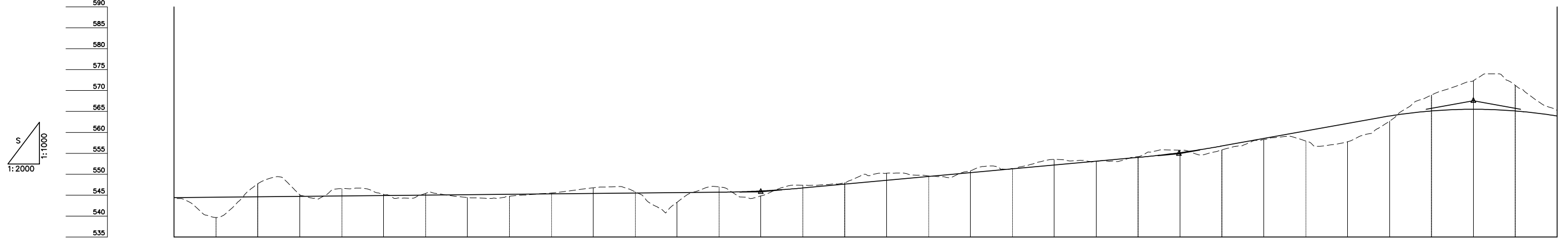
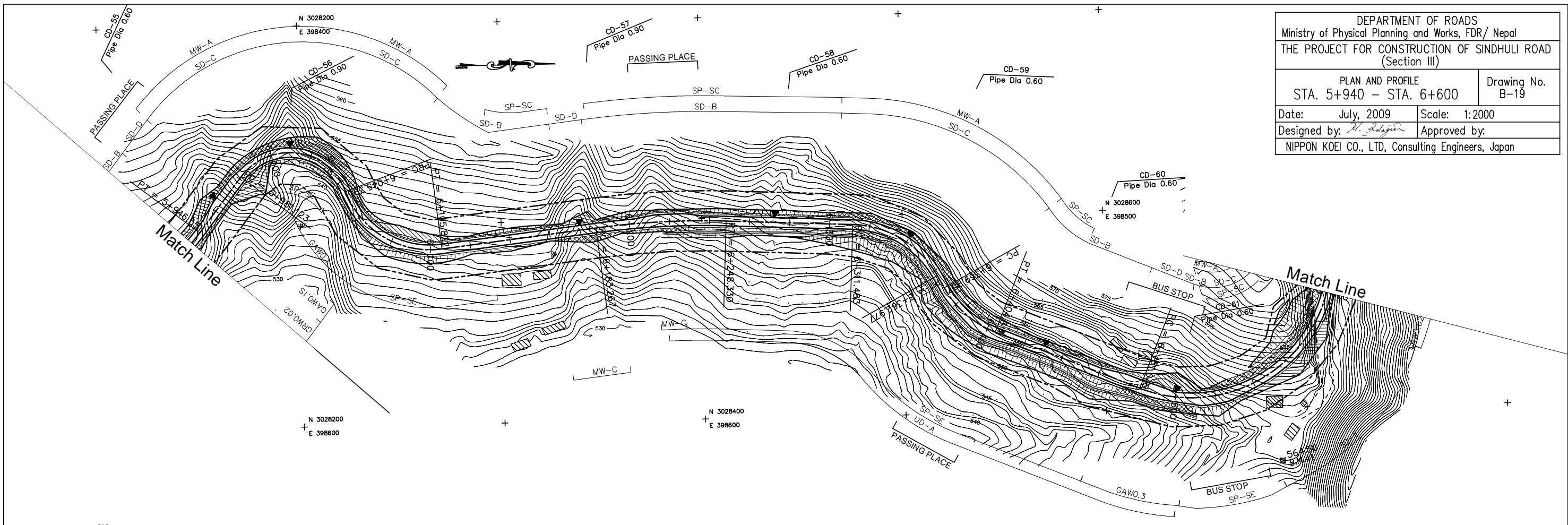


DEPARTMENT OF ROADS
 Ministry of Physical Planning and Works, FDR/ Nepal
 THE PROJECT FOR CONSTRUCTION OF SINDHULI ROAD
 (Section III)

PLAN AND PROFILE
 STA. 5+940 - STA. 6+600

Drawing No. B-19

Date: July, 2009 Scale: 1:2000
 Designed by: *S. Delagis* Approved by:
 NIPPON KOEI CO., LTD, Consulting Engineers, Japan



GRADE		0.500% L=320.000		545.800 E+220.000		4.564% L=199.499		554.905 E+419.499		9.000% L=140.501		567.550 E+560.000	
PROPOSED HEIGHT	544.400	544.500	544.600	544.700	544.800	544.900	545.000	545.100	545.200	545.300	545.400	545.500	545.600
GROUND HEIGHT	544.138	539.651	547.727	545.100	546.566	545.216	545.411	544.448	544.749	545.502	546.777	545.842	543.290
STATION	5+940	5+960	5+990	6+000	6+020	6+040	6+060	6+080	6+100	6+120	6+140	6+160	6+180
CURVE ELEMENT		R=90 L=38.778	R=30 L=64.271	R=45 L=60.427	R=45 L=60.427	R=45 L=60.427	R=45 L=60.427	R=45 L=60.427	R=45 L=60.427	R=45 L=60.427	R=45 L=60.427	R=45 L=60.427	R=45 L=60.427
SUPER ELEVATION		Left Right	Left Right	Left Right	Left Right	Left Right	Left Right	Left Right	Left Right	Left Right	Left Right	Left Right	Left Right
WIDENING		1.25m	1.25m	1.25m	1.25m	1.25m	1.25m	1.25m	1.25m	1.25m	1.25m	1.25m	1.25m
DESIGN SPEED		30 Km/h											