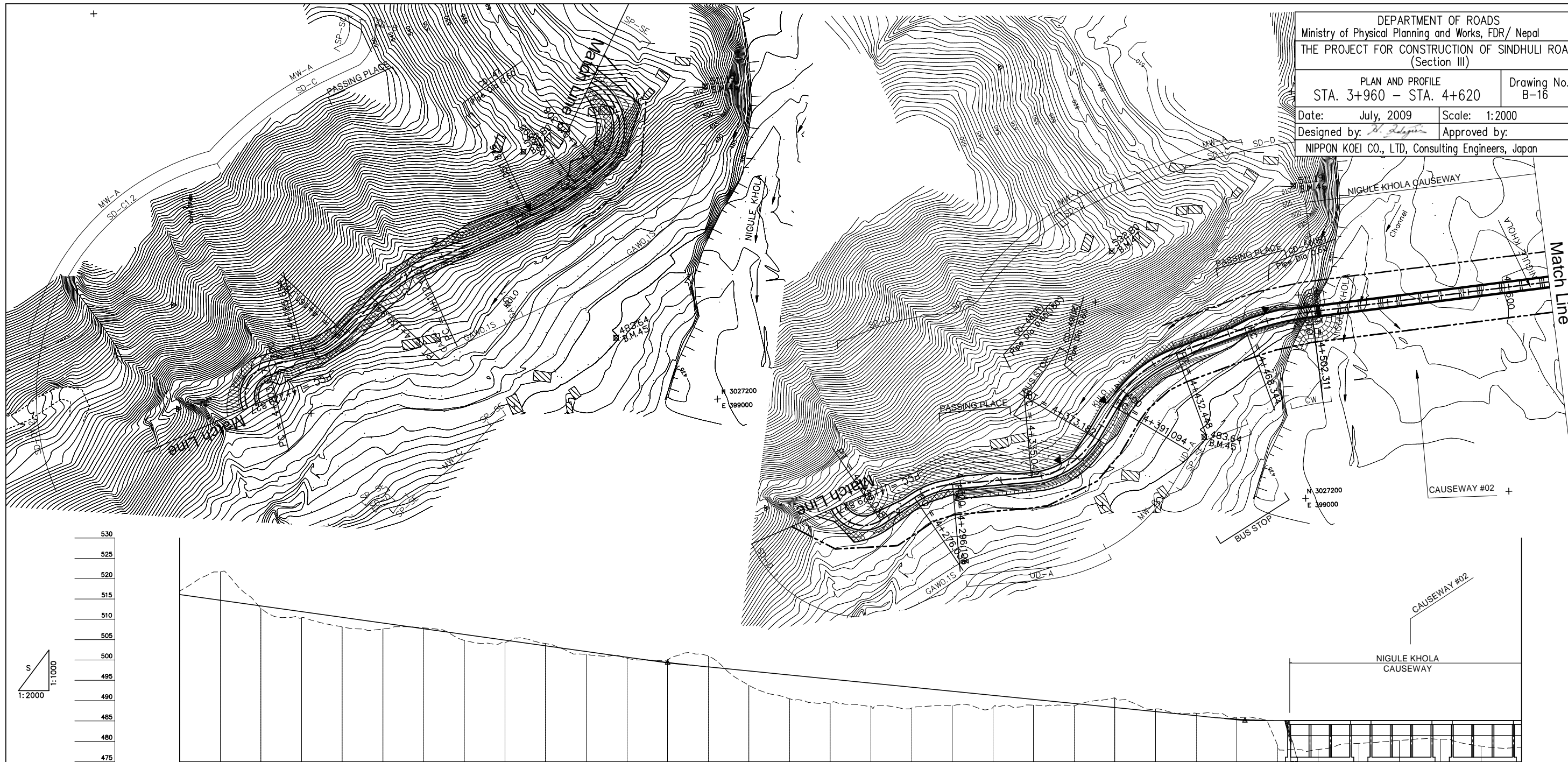


DEPARTMENT OF ROADS  
 Ministry of Physical Planning and Works, FDR/ Nepal  
 THE PROJECT FOR CONSTRUCTION OF SINDHULI ROAD  
 (Section III)

PLAN AND PROFILE STA. 3+960 - STA. 4+620	Drawing No. B-16
Date: July, 2009	Scale: 1:2000
Designed by: R. K. Karki	Approved by:
NIPPON KOEI CO., LTD, Consulting Engineers, Japan	



GRADE		$\frac{1}{3000.000}$ <span style="margin-left: 150px;"><math>\frac{1}{2000.000}</math></span> <span style="margin-left: 150px;"><math>\frac{1}{800.000}</math></span>
PROPOSED HEIGHT	516.100	514.700 513.300 511.900 510.500 509.100 507.700 506.300 504.900 503.500 502.100 500.700 499.400 498.300 497.300 496.300 495.300 494.300 493.300 492.300 491.300 490.300 489.300 488.300 487.300 486.300 485.460 485.110 485.100 485.100 485.100 485.100 485.100 485.100 485.100
GROUND HEIGHT	516.912	521.691 512.774 510.388 508.109 507.628 507.903 504.822 504.361 504.050 501.409 500.411 499.940 500.978 493.779 490.481 489.358 488.666 488.194 488.771 488.324 488.918 488.753 490.678 487.974 486.903 485.805 479.010 478.019 479.494 480.229 480.520 478.839 478.584
STATION	3+960	3+980 4+000 4+020 4+040 4+060 4+080 4+100 4+120 4+140 4+160 4+180 4+200 4+220 4+240 4+260 4+280 4+300 4+320 4+340 4+360 4+380 4+400 4+420 4+440 4+460 4+480 4+500 4+520 4+540 4+560 4+580 4+600 4+620
CURVE ELEMENT		<span style="margin-left: 50px;">R=25 L=55.183</span> <span style="margin-left: 50px;">R=110 L=27.072</span> <span style="margin-left: 100px;">L=60.238</span> <span style="margin-left: 50px;">R=70 L=27.828</span> <span style="margin-left: 50px;">L=21.844</span> <span style="margin-left: 50px;">R=40 L=23.867</span> <span style="margin-left: 50px;">L=17.963</span> <span style="margin-left: 50px;">R=15 L=26.211</span> <span style="margin-left: 50px;">L=20.000</span> <span style="margin-left: 50px;">R=40 L=20.065</span> <span style="margin-left: 50px;">L=38.940</span> <span style="margin-left: 50px;">R=40 L=38.140</span> <span style="margin-left: 50px;">L=17.912</span> <span style="margin-left: 50px;">R=60 L=41.354</span> <span style="margin-left: 50px;">L=35.896</span> <span style="margin-left: 50px;">R=150 L=33.967</span> <span style="margin-left: 50px;">L=196.232</span>
SUPER ELEVATION	Left Right	$+010.308$ $+024.805$ $+051.876$ $+112.115$ $+139.943$ $+161.787$ $+185.654$ $+203.617$ $+229.827$ $+256.038$ $+276.038$ $+295.103$ $+335.042$ $+373.182$ $+391.094$ $+432.448$ $+468.344$ $+502.311$
WIDENING		<span style="margin-left: 100px;">0.5m</span> <span style="margin-left: 100px;">1.25m</span> <span style="margin-left: 100px;">2.25m</span> <span style="margin-left: 100px;">1.25m</span> <span style="margin-left: 100px;">1.75m</span> <span style="margin-left: 100px;">1.75m</span> <span style="margin-left: 100px;">1.25m</span>
DESIGN SPEED		<span style="margin-left: 100px;">30 Km/h</span> <span style="margin-left: 200px;">20 Km/h</span> <span style="margin-left: 200px;">30 Km/h</span>