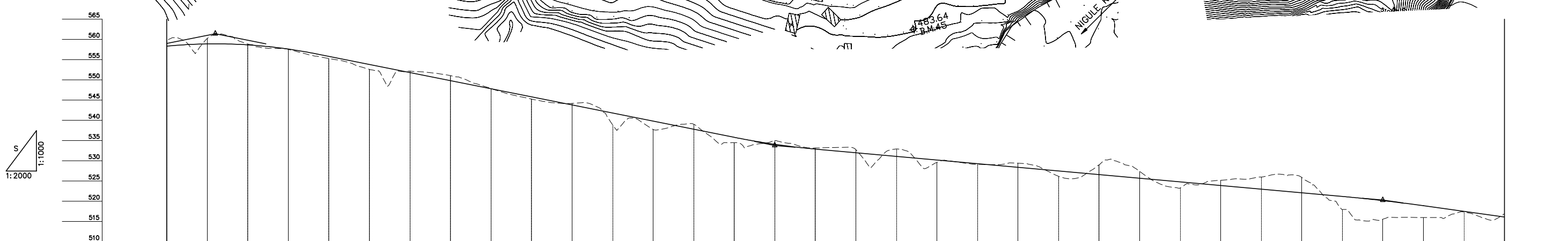
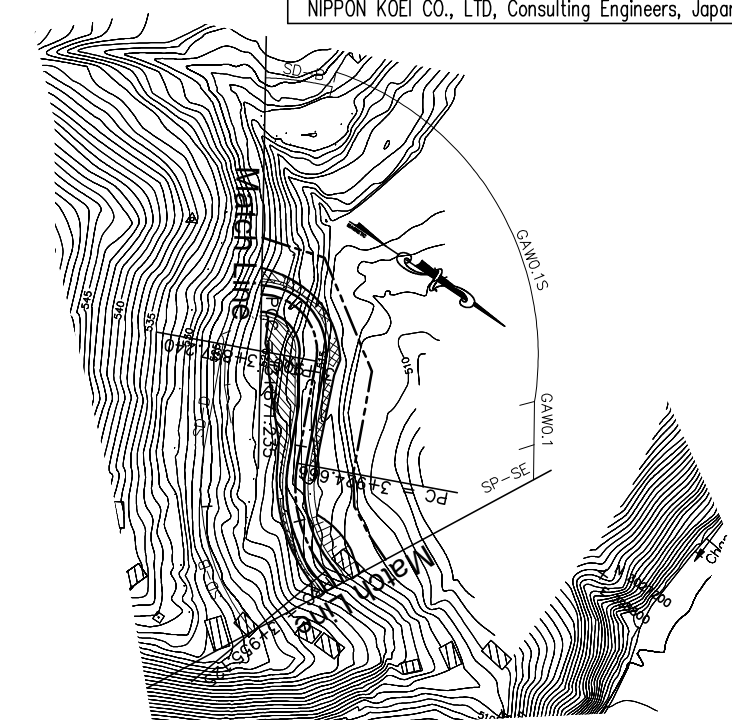
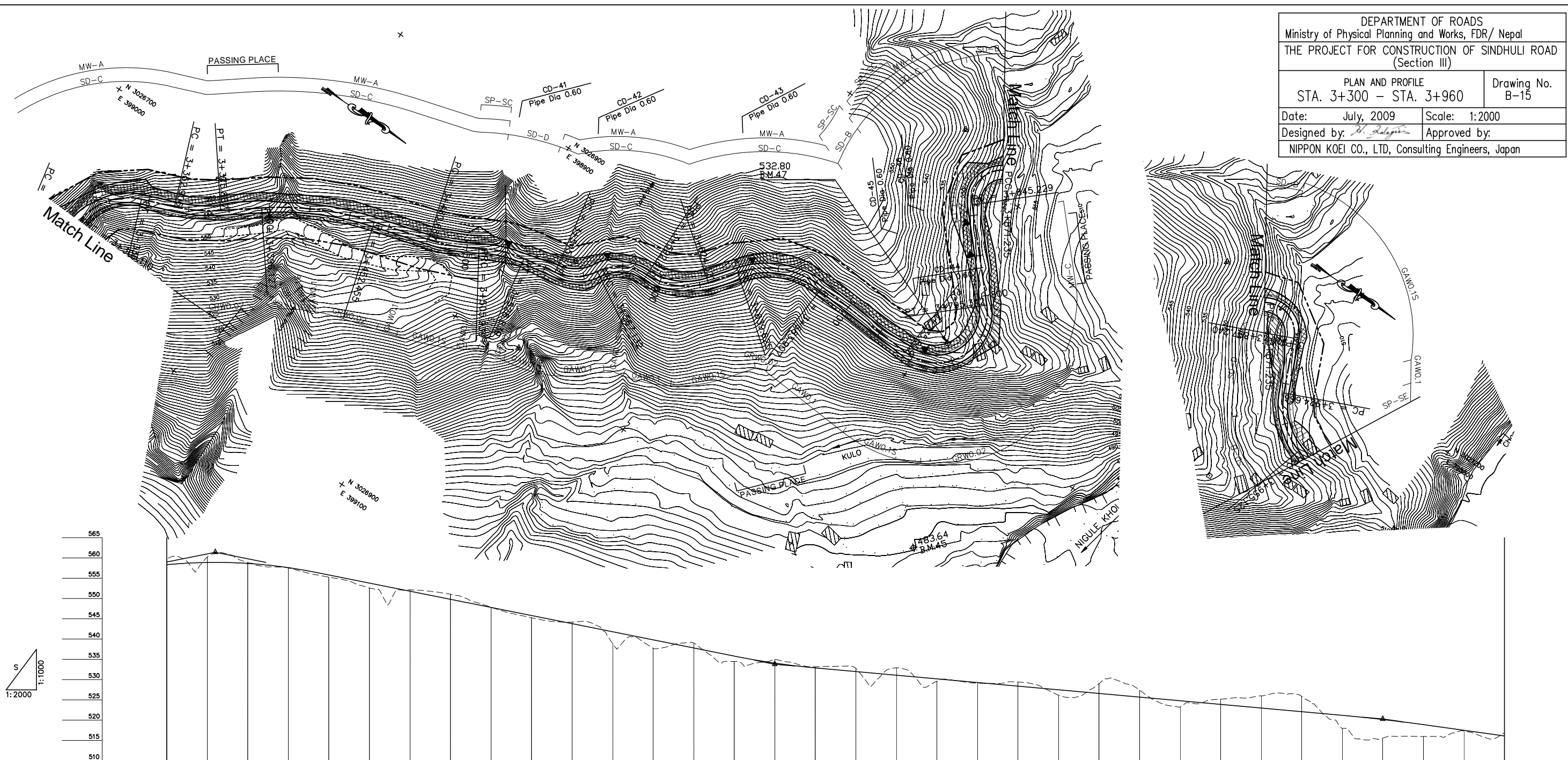


DEPARTMENT OF ROADS
 Ministry of Physical Planning and Works, FDR/ Nepal
 THE PROJECT FOR CONSTRUCTION OF SINDHULI ROAD
 (Section III)

PLAN AND PROFILE STA. 3+300 - STA. 3+960		Drawing No. B-15
Date: July, 2009	Scale: 1:2000	
Designed by: <i>R. Dalgin</i>	Approved by:	
NIPPON KOEI CO., LTD, Consulting Engineers, Japan		



GRADE	561.400 3+324.000		-10.000% L=276.000										533.800 3+600.000										-4.500% L=300.000										520.300 3+900.000										-7.000% L=300.000									
PROPOSED HEIGHT	558.324	558.884	558.644	557.604	555.800	553.800	551.800	549.800	547.800	545.800	543.800	541.800	539.800	537.800	535.800	534.075	532.900	532.000	531.100	529.300	528.400	527.500	526.600	525.700	524.800	523.900	523.000	522.100	521.200	520.175	518.900	517.500	516.100																			
GROUND HEIGHT	559.792	560.233	558.857	557.513	555.281	552.583	552.158	551.031	547.836	545.254	544.177	538.877	537.737	539.036	534.464	535.056	533.164	532.748	532.921	529.606	529.423	526.192	529.003	527.390	523.291	525.201	526.000	525.914	518.000	515.573	516.000	517.321	516.912																			
STATION	3+300	3+320	3+340	3+360	3+380	3+400	3+420	3+440	3+460	3+480	3+500	3+520	3+540	3+560	3+580	3+600	3+620	3+640	3+660	3+680	3+700	3+720	3+740	3+760	3+780	3+800	3+820	3+840	3+860	3+880	3+900	3+920	3+940	3+960																		
CURVE ELEMENT	R=25 L=34.423		R=30 L=36.120		L=16.676		R=80 L=22.981		L=20.260		R=150 L=56.328		L=28.231		R=90 L=25.252		L=22.900		R=60 L=16.700		L=21.593		R=25 L=25.678		L=15.304		R=35 L=31.510		L=44.281		R=45 L=51.902		L=59.533		R=25 L=26.006		L=26.006		R=15 L=27.426		L=30.459		R=25 L=55.183									
SUPER ELEVATION	+300.110		+336.230		+352.906		+375.867		+396.127		+452.455		+480.687		+505.939		+528.839		+545.539		+567.132		+592.810		+624.321		+639.625		+683.907		+735.809		+795.342		+845.229		+871.235		+897.240		+924.666		+955.125									
WIDENING	1.5m		1.25m		1.5m		0.5m		1.25m		1.5m		1.25m		1.5m		1.25m		2.25m		0.5m																															
DESIGN SPEED	30 Km/h										20 Km/h										30 Km/h																															