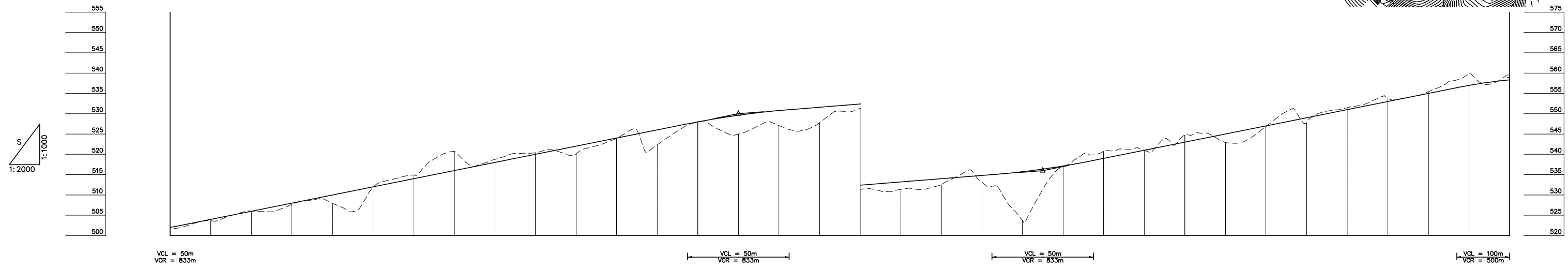
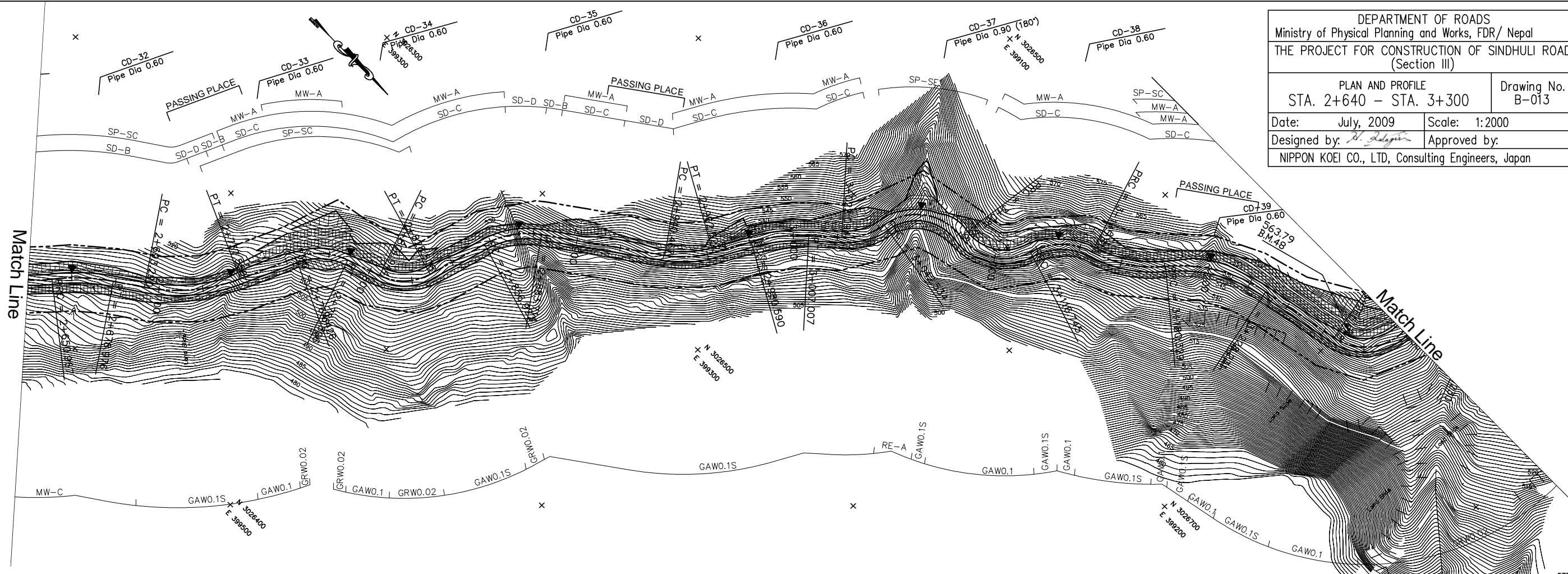


DEPARTMENT OF ROADS  
 Ministry of Physical Planning and Works, FDR/ Nepal  
 THE PROJECT FOR CONSTRUCTION OF SINDHULI ROAD  
 (Section III)

PLAN AND PROFILE  
 STA. 2+640 - STA. 3+300

Date: July, 2009 Scale: 1:2000  
 Designed by: *H. Dalgin* Approved by:  
 NIPPON KOEI CO., LTD, Consulting Engineers, Japan



GRADE																																		
PROPOSED HEIGHT	502.015	504.000	506.000	508.000	510.000	512.000	514.000	516.000	518.000	520.000	522.000	524.000	526.000	527.985	529.625	530.785	531.600	532.400	533.200	534.000	534.800	535.735	537.135	539.000	541.000	543.000	545.000	547.000	549.000	551.000	553.000	555.000	556.964	558.324
GROUND HEIGHT	501.597	503.713	506.025	507.699	507.942	511.896	514.929	520.754	518.777	520.421	520.069	523.953	522.367	527.922	524.980	527.092	527.810	531.333	531.373	532.576	533.174	523.696	537.049	540.789	540.986	544.715	542.944	546.815	547.819	551.469	553.861	555.426	559.982	559.792
STATION	2+640	2+660	2+680	2+700	2+720	2+740	2+760	2+780	2+800	2+820	2+840	2+860	2+880	2+900	2+920	2+940	2+960	2+980	3+000	3+020	3+040	3+060	3+080	3+100	3+120	3+140	3+160	3+180	3+200	3+220	3+240	3+260	3+280	3+300
CURVE ELEMENT																																		
SUPER ELEVATION																																		
WIDENING																																		
DESIGN SPEED	30 Km/h																																	