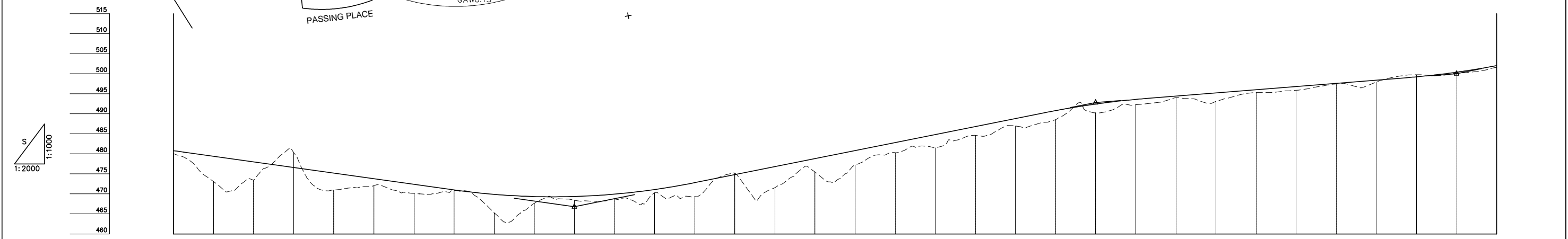
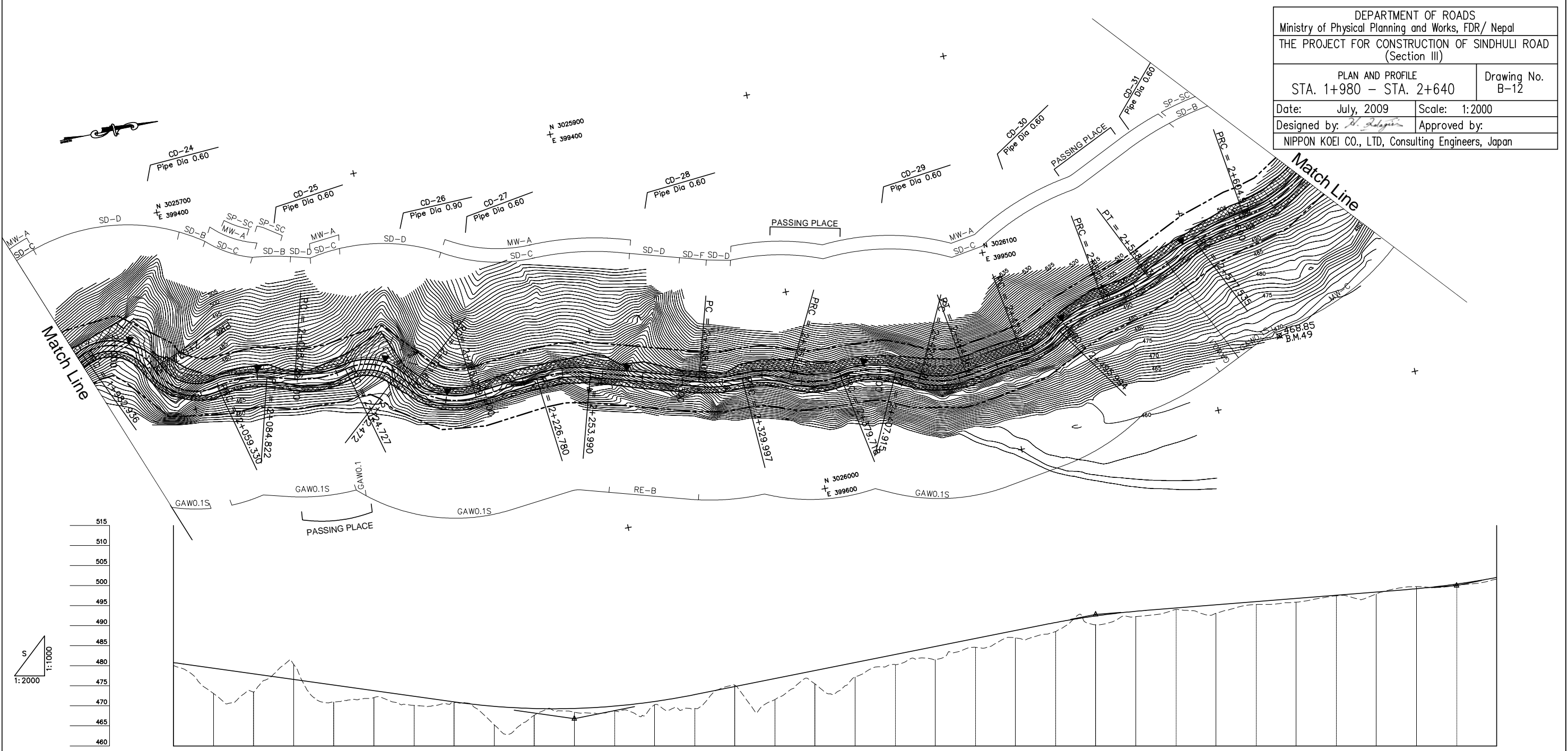


DEPARTMENT OF ROADS
 Ministry of Physical Planning and Works, FDR/ Nepal
 THE PROJECT FOR CONSTRUCTION OF SINDHULI ROAD
 (Section III)

PLAN AND PROFILE STA. 1+980 - STA. 2+640		Drawing No. B-12
Date: July, 2009	Scale: 1:2000	
Designed by: <i>R. Dalgin</i>	Approved by:	
NIPPON KOEI CO., LTD, Consulting Engineers, Japan		



GRADE		-7.000% L=230.000		466.800 2+180.000		10.000% L=260.000		492.800 2+440.000		4.000% L=180.000		500.000 2+620.000																						
PROPOSED HEIGHT	480.777	479.400	478.000	476.600	475.200	473.800	472.400	471.000	469.883	469.333	469.350	469.933	471.083	472.800	474.800	476.800	478.800	480.800	482.800	484.800	486.800	488.800	490.785	492.425	493.585	494.400	495.200	496.000	496.800	497.600	498.400	499.215	500.375	501.597
GROUND HEIGHT	480.042	473.094	473.448	480.302	470.946	472.059	470.100	470.826	465.290	467.646	468.415	468.745	470.279	469.347	475.138	471.545	475.464	477.183	480.281	481.502	484.605	486.965	488.525	490.237	492.249	494.037	493.082	495.301	495.867	497.430	497.937	499.752	500.144	501.597
STATION	1+980	2+000	2+020	2+040	2+060	2+080	2+100	2+120	2+140	2+160	2+180	2+200	2+220	2+240	2+260	2+280	2+300	2+320	2+340	2+360	2+380	2+400	2+420	2+440	2+460	2+480	2+500	2+520	2+540	2+560	2+580	2+600	2+620	2+640
CURVE ELEMENT	R=50 L=25.381	R=25 L=40.429	R=25 L=35.965	R=50 L=25.491	R=50 L=13.904	R=50 L=26.001	R=25 L=27.745	R=25 L=9.200	R=35 L=33.628	L=31.481	R=70 L=27.210	L=54.093	R=65 L=21.915	R=45 L=23.604	R=40 L=26.117	R=45 L=28.197	R=40 L=12.354	R=40 L=24.095	L=29.420	R=50 L=22.210	R=60 L=26.501	R=90 L=25.718	R=90 L=27.443	R=60 L=45.989										
SUPER ELEVATION	+982.936	+023.365	+059.330	+084.822	+098.726	+124.727	+152.472	+161.672	+195.299	+226.780	+253.990	+308.082	+329.997	+353.601	+379.718	+407.915	+420.269	+444.364	+473.784	+495.994	+522.495	+548.213	+577.535	+604.978										
WIDENING	0.5m	1.5m	1.25m	0.5m	1.25m	0.5m	1.25m	0.5m	1.25m	0.5m	1.25m	0.5m	1.25m	0.5m	1.25m	0.5m	1.25m	0.5m	1.25m	0.5m	1.25m	0.5m	1.25m	0.5m	1.25m	0.5m	1.25m	0.5m	1.25m	0.5m	1.25m	0.5m	1.25m	
DESIGN SPEED	30 Km/h																																	