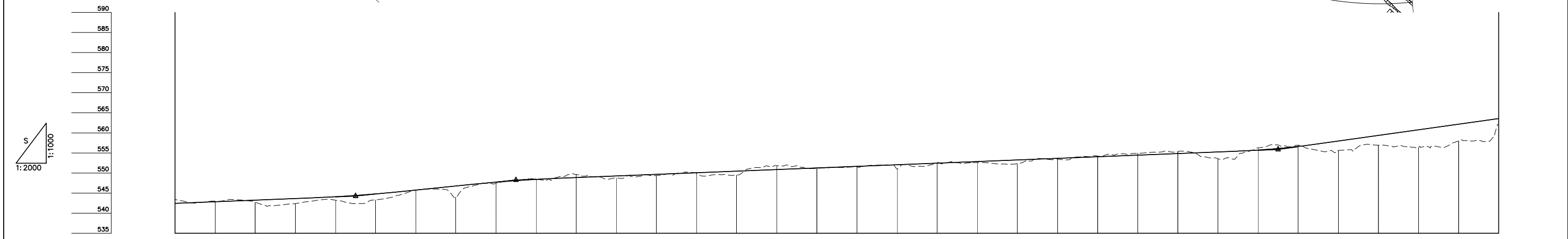
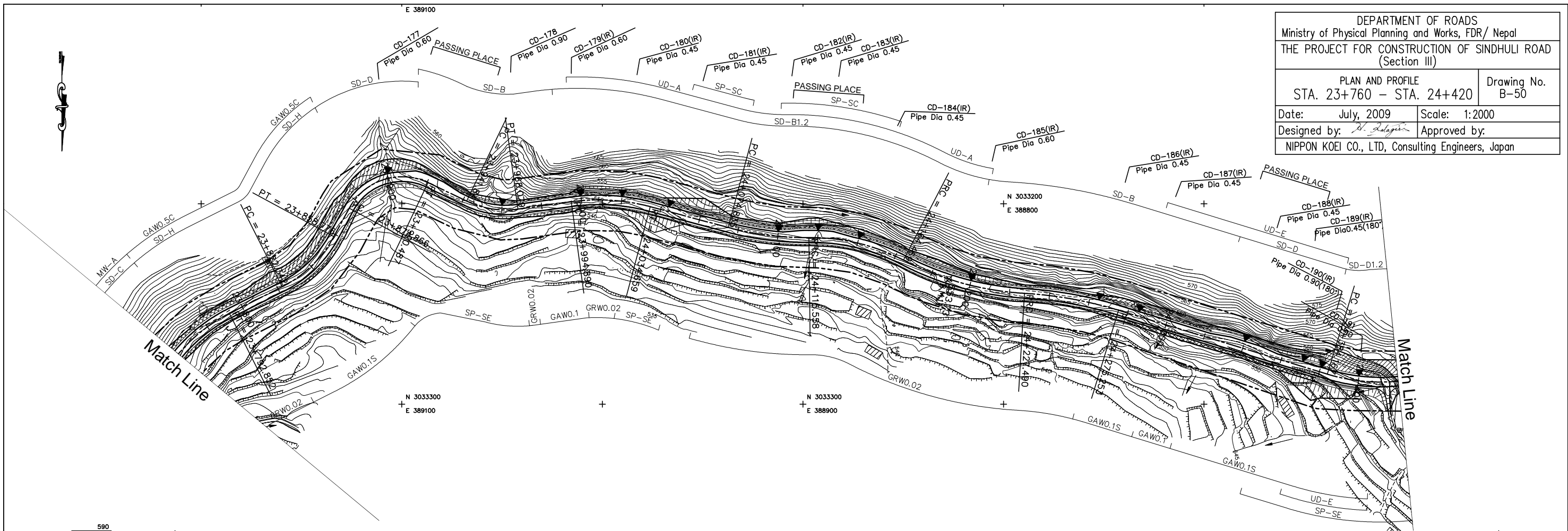


DEPARTMENT OF ROADS  
 Ministry of Physical Planning and Works, FDR/ Nepal  
 THE PROJECT FOR CONSTRUCTION OF SINDHULI ROAD  
 (Section III)

PLAN AND PROFILE  
 STA. 23+760 - STA. 24+420

Drawing No. B-50

Date: July, 2009 Scale: 1:2000  
 Designed by: *S. Salgotra* Approved by:  
 NIPPON KOEI CO., LTD, Consulting Engineers, Japan



GRADE		2.000% L=460.000		5.000% L=60.000		2.000% L=380.000		555.860 24+310.000		7.000% L=180.000																									
PROPOSED HEIGHT		542.460	542.860	543.260	543.660	544.098	544.798	545.760	546.760	547.723	548.423	549.260	549.660	550.060	550.460	550.860	551.260	551.660	552.060	552.460	552.860	553.260	553.660	554.060	554.460	554.860	555.260	555.723	556.623	557.960	559.360	560.760	562.160	563.560	
GROUND HEIGHT		543.407	542.989	542.725	542.370	543.221	543.321	545.781	544.000	547.430	548.436	549.629	548.747	549.382	549.508	551.832	551.156	551.560	551.000	552.541	552.622	552.320	553.548	554.220	554.929	555.338	553.553	556.271	556.914	555.616	556.925	556.354	558.027	562.083	
STATION		23+760	23+780	23+800	23+820	23+840	23+860	23+880	23+900	23+920	23+940	23+960	23+980	24+000	24+020	24+040	24+060	24+080	24+100	24+120	24+140	24+160	24+180	24+200	24+220	24+240	24+260	24+280	24+300	24+320	24+340	24+360	24+380	24+400	24+420
CURVE ELEMENT		R=80 L=56.653		R=60 L=36.434		R=30 L=16.091		R=45 L=26.239		R=100 L=39.769		R=150 L=40.175		R=100 L=48.911		R=150 L=63.022		R=200 L=47.763		L=108.914		R=90 L=36.338													
SUPER ELEVATION	Left Right	+792.852		+822.342		+858.776 +874.866		+920.487		+941.841		+968.079		+994.890		+034.659		+074.835		+115.558		+164.469		+227.490		+275.253		L=108.914		+384.167					
WIDENING						1.25m				1.25m						1.25m										1.25m									
DESIGN SPEED	Running speed	30 Km/h																30 Km/h(40 Km/h)																	