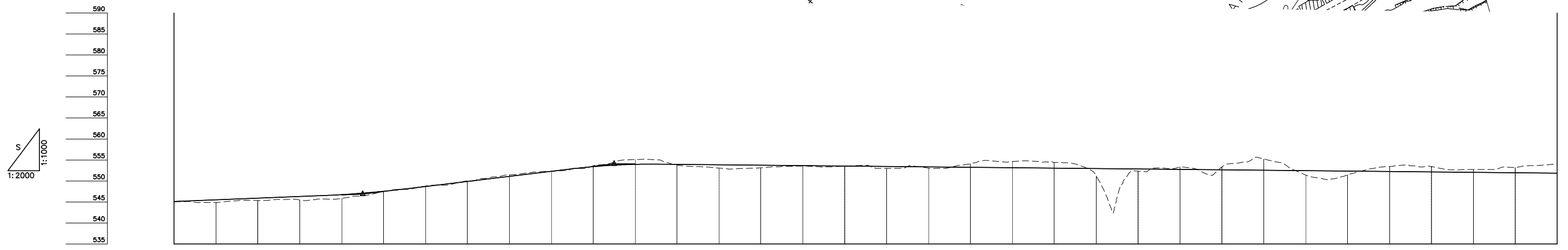
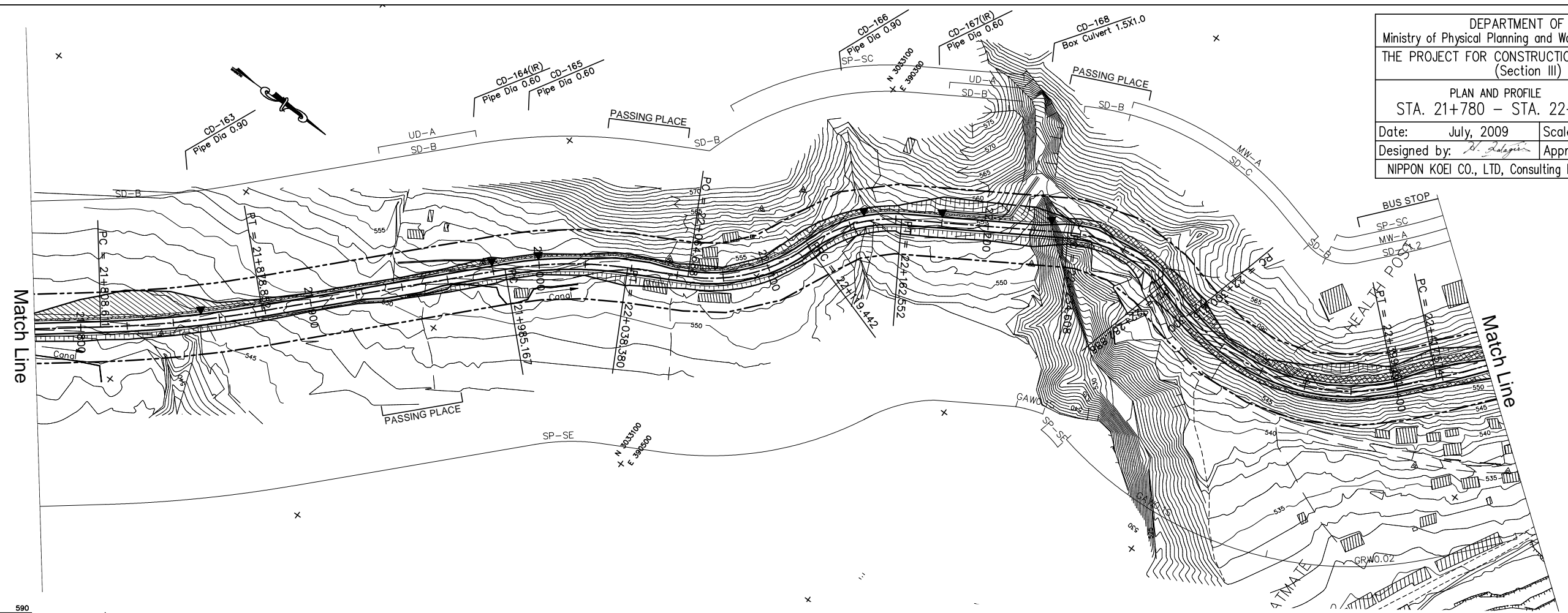


DEPARTMENT OF ROADS
 Ministry of Physical Planning and Works, FDR/ Nepal
 THE PROJECT FOR CONSTRUCTION OF SINDHULI ROAD
 (Section III)

PLAN AND PROFILE
 STA. 21+780 - STA. 22+440

Drawing No. B-47

Date: July, 2009 Scale: 1:2000
 Designed by: *S. Subin* Approved by:
 NIPPON KOEI CO., LTD, Consulting Engineers, Japan



GRADE	544.700 21+760.000		2.000% L=110.000		546.900 21+870.000		6.000% L=120.000		554.100 21+990.000		-0.500% L=760.000																							
PROPOSED HEIGHT	545.100	545.500	545.900	546.300	546.750	547.550	548.700	549.900	551.100	552.300	553.419	553.969	553.950	553.850	553.750	553.650	553.550	553.450	553.350	553.250	553.150	553.050	552.950	552.850	552.750	552.650	552.550	552.450	552.350	552.250	552.150	552.050	551.950	551.850
GROUND HEIGHT	545.068	544.886	545.361	545.460	545.868	547.512	548.794	550.000	551.473	552.317	553.619	555.111	553.817	553.088	553.121	553.551	553.542	553.000	553.058	554.106	554.652	554.407	551.231	552.358	553.316	553.345	555.245	551.415	551.464	553.440	553.454	552.719	553.194	554.093
STATION	21+780	21+800	21+820	21+840	21+860	21+880	21+900	21+920	21+940	21+960	21+980	22+000	22+020	22+040	22+060	22+080	22+100	22+120	22+140	22+160	22+180	22+200	22+220	22+240	22+260	22+280	22+300	22+320	22+340	22+360	22+380	22+400	22+420	22+440
CURVE ELEMENT	L=130.473		R=500 L=70.241		+878.852		L=106.315		+985.167		R=170 L=53.213		L=26.308		R=70 L=54.754		R=60 L=43.110		L=72.056		R=60 L=48.280		L=17.827		R=90 L=98.486		L=18.373		L=83.615					
SUPER ELEVATION	+808.611										+038.380		+084.688		+119.442		+162.552		L=72.056		+234.608		+282.888		+300.715		+399.201		+417.574					
WIDENING							1.25m				1.25m										1.25m								1.75m					
DESIGN SPEED	()		Running speed																		30 Km/h(40 Km/h)													