

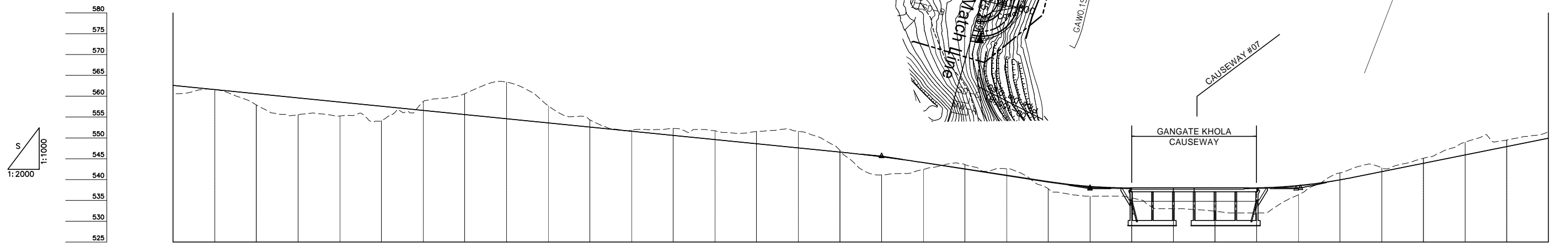
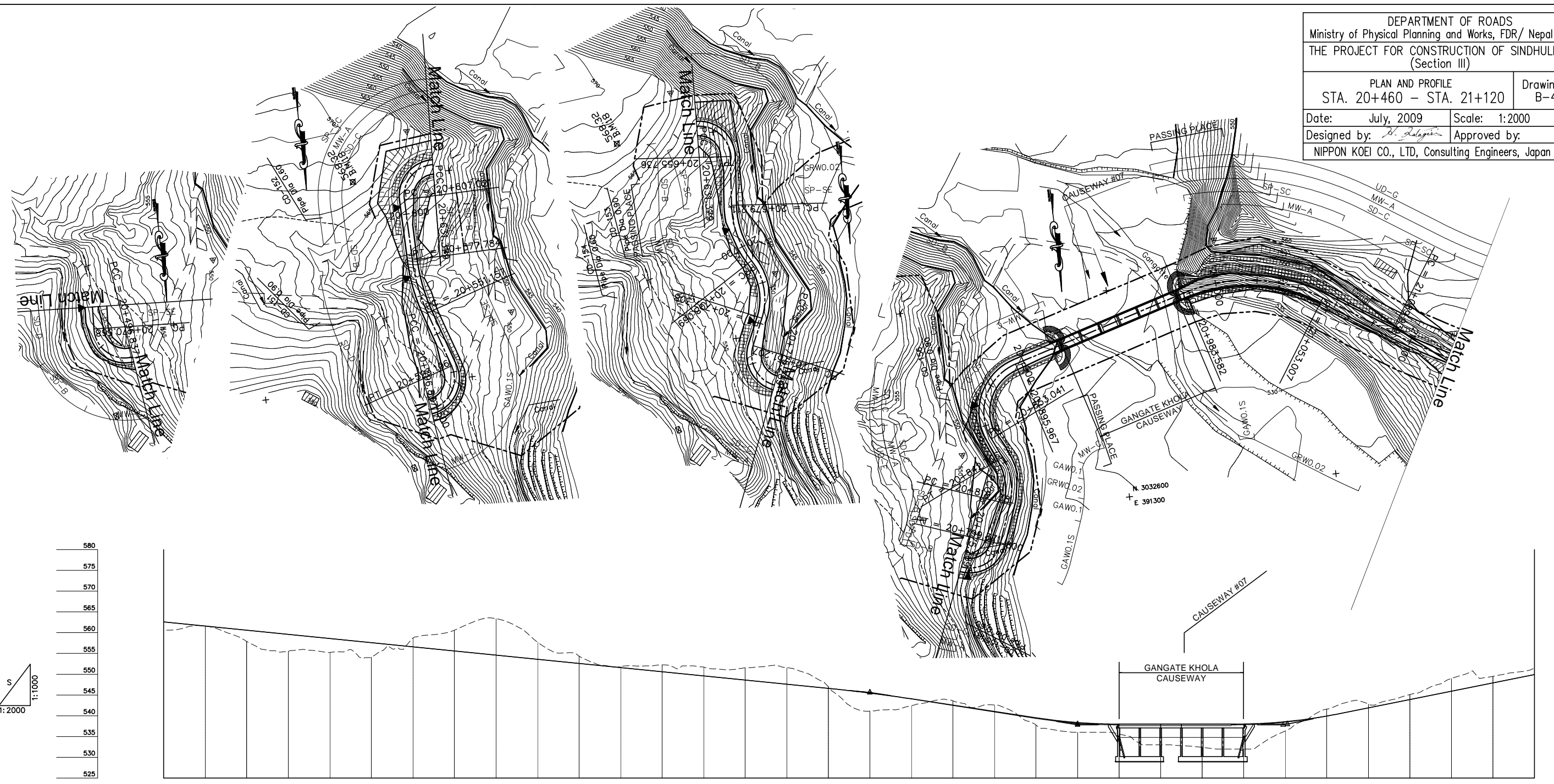


DEPARTMENT OF ROADS  
 Ministry of Physical Planning and Works, FDR/ Nepal  
 THE PROJECT FOR CONSTRUCTION OF SINDHULI ROAD  
 (Section III)

PLAN AND PROFILE  
 STA. 20+460 – STA. 21+120

Drawing No. B-45

Date: July, 2009 Scale: 1:2000  
 Designed by: *S. Salgin* Approved by:  
 NIPPON KOEI CO., LTD, Consulting Engineers, Japan



GRADE																																				
PROPOSED HEIGHT		562.600	561.600	560.600	559.600	558.600	557.600	556.600	555.600	554.600	553.600	552.600	551.600	550.600	549.600	548.600	547.600	546.600	545.470	544.080	542.560	541.040	539.520	538.380	538.000	538.000	538.000	538.000	538.016	538.576	539.936	541.900	543.900	545.900	547.900	549.900
GROUND HEIGHT		560.527	561.631	557.908	555.551	555.240	554.141	558.671	560.582	563.400	557.718	554.363	551.882	552.254	551.718	551.561	551.592	547.004	541.117	542.432	543.571	542.620	537.783	536.000	535.594	533.000	532.389	532.000	536.367	541.608	542.819	545.115	548.982	549.499	551.398	549.900
STATION		20+460	20+480	20+500	20+520	20+540	20+560	20+580	20+600	20+620	20+640	20+660	20+680	20+700	20+720	20+740	20+760	20+780	20+800	20+820	20+840	20+860	20+880	20+900	20+920	20+940	20+960	20+980	21+000	21+020	21+040	21+060	21+080	21+100	21+120	
CURVE ELEMENT																																				
SUPER ELEVATION	Left Right																																			
WIDENING																																				
DESIGN SPEED	Running speed																																			