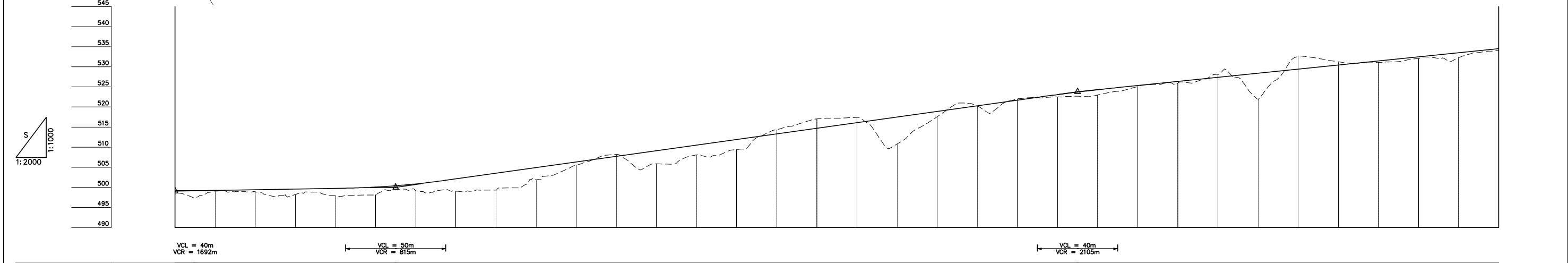
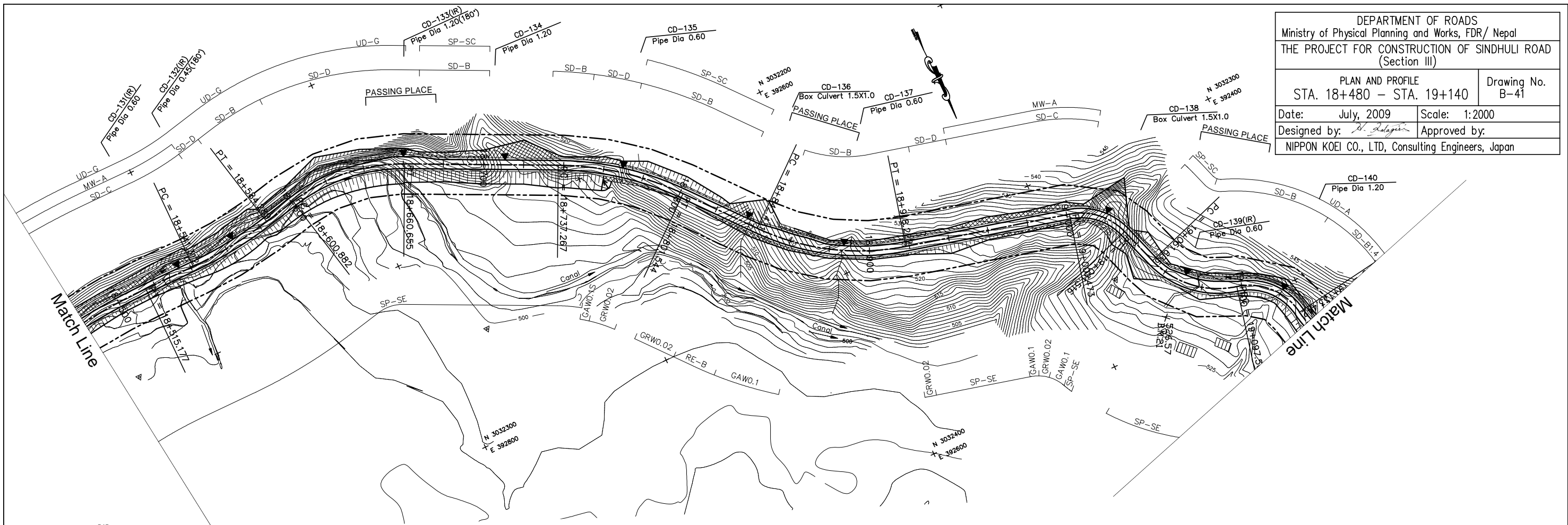


DEPARTMENT OF ROADS
 Ministry of Physical Planning and Works, FDR/ Nepal
 THE PROJECT FOR CONSTRUCTION OF SINDHULI ROAD
 (Section III)

PLAN AND PROFILE
 STA. 18+480 - STA. 19+140

Drawing No. B-41

Date: July, 2009 Scale: 1:2000
 Designed by: *S. Halgiri* Approved by:
 NIPPON KOEI CO., LTD, Consulting Engineers, Japan



GRADE	499.060 18+480.000		500.010 18+590.000		523.810 18+930.000																																	
PROPOSED HEIGHT	499.178	499.233	499.405	499.578	499.751	500.062	500.848	502.110	503.510	504.910	506.310	507.710	509.110	510.510	511.910	513.310	514.710	516.110	517.510	518.910	520.310	521.710	523.086	524.296	525.340	526.360	527.380	528.400	529.420	530.440	531.460	532.480	533.500	534.520				
GROUND HEIGHT	498.661	499.059	498.928	498.193	497.924	498.144	499.146	499.041	499.322	501.905	505.511	508.212	505.855	508.074	509.420	514.325	517.033	517.402	510.785	517.587	518.910	520.196	521.980	522.515	522.996	525.111	525.981	528.119	521.948	532.618	531.259	531.079	532.079	532.265	534.095			
STATION	18+480	18+500	18+520	18+540	18+560	18+580	18+600	18+620	18+640	18+660	18+680	18+700	18+720	18+740	18+760	18+780	18+800	18+820	18+840	18+860	18+880	18+900	18+920	18+940	18+960	18+980	19+000	19+020	19+040	19+060	19+080	19+100	19+120	19+140				
CURVE ELEMENT	R=300 L=51.289		R=200 L=42.977		R=90 L=59.773		R=150 L=64.277		R=120 L=75.791		R=30 L=30.043		R=45 L=45.868		R=30 L=35.939		R=5 L=3.379																					
SUPER ELEVATION	+515.177		+541.312		+584.289 +600.882		+660.655		+737.267		+801.544		+842.431		+918.222		+001.473		+031.516		+051.635		+097.503		+133.442													
WIDENING	1.25m		1.25m		1.25m		1.25m		1.25m		1.25m		1.25m		1.25m		1.25m																					
DESIGN SPEED	30 Km/h																																					