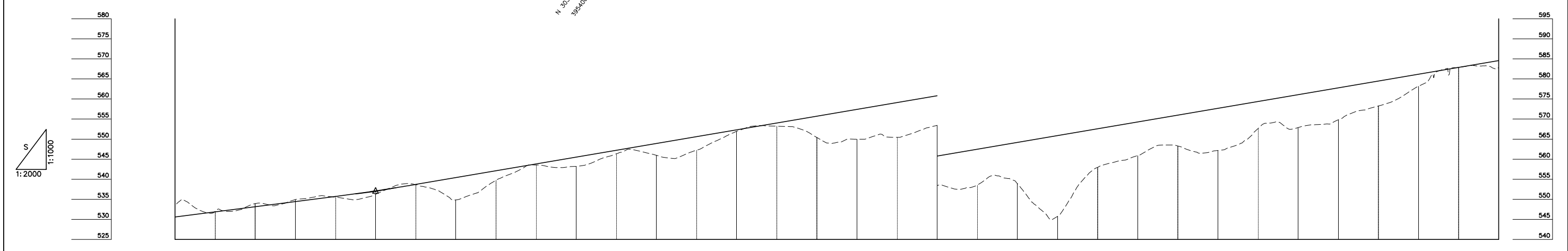
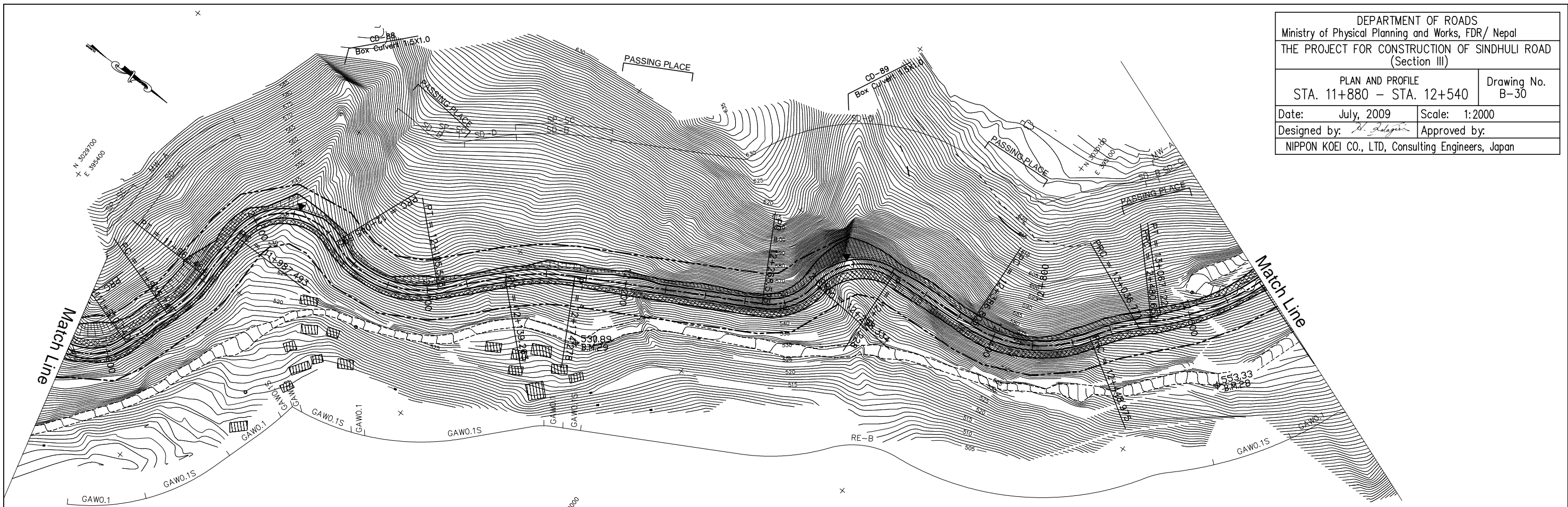


DEPARTMENT OF ROADS
 Ministry of Physical Planning and Works, FDR/ Nepal
 THE PROJECT FOR CONSTRUCTION OF SINDHULI ROAD
 (Section III)

PLAN AND PROFILE
 STA. 11+880 - STA. 12+540

Drawing No. B-30

Date: July, 2009 Scale: 1:2000
 Designed by: *S. Subedi* Approved by:
 NIPPON KOEI CO., LTD, Consulting Engineers, Japan



GRADE		6.400% L=658.333		537.000 11+980.000		8.500% L=600.000																															
PROPOSED HEIGHT		530.600	531.880	533.160	534.440	535.720	537.105	538.700	540.400	542.100	543.800	545.500	547.200	548.900	550.600	552.300	554.000	555.700	557.400	559.100	560.800	562.500	564.200	565.900	567.600	569.300	571.000	572.700	574.400	576.100	577.800	579.500	581.200	582.900	584.600		
GROUND HEIGHT		533.543	531.979	533.915	534.914	535.541	536.258	538.657	534.852	539.722	543.552	543.188	546.353	545.968	547.224	551.944	553.227	550.429	549.994	550.441	553.446	553.543	553.900	545.725	557.971	560.890	563.283	562.164	567.626	567.893	569.814	573.274	578.194	582.891	582.776		
STATION		11+880	11+900	11+920	11+940	11+960	11+980	12+000	12+020	12+040	12+060	12+080	12+100	12+120	12+140	12+160	12+180	12+200	12+220	12+240	12+260	12+280	12+300	12+320	12+340	12+360	12+380	12+400	12+420	12+440	12+460	12+480	12+500	12+520	12+540		
CURVE ELEMENT		R=30 L=47.392		R=90 L=26.723		R=30 L=25.029		R=30 L=58.202		R=50 L=59.838		R=110 L=33.731		R=110 L=35.015		R=30 L=94.297		R=30 L=29.759		R=30 L=42.893		R=65 L=62.171		R=120 L=31.677		R=120 L=57.991		R=60 L=29.953									
SUPER ELEVATION	Left Right	+910.740		+935.741		+962.464		+987.493		+045.695		+105.533		+139.263		+174.278		+268.575		+298.334		+341.228		+386.805		+448.975		+480.652		+538.643							
WIDENING		0.5m		1.25m		1.25m		1.25m		1.25m		0.5m		1.25m		1.25m		0.5m		1.25m		1.25m		1.25m		1.25m		1.25m		1.25m							
DESIGN SPEED		30 Km/h																																			