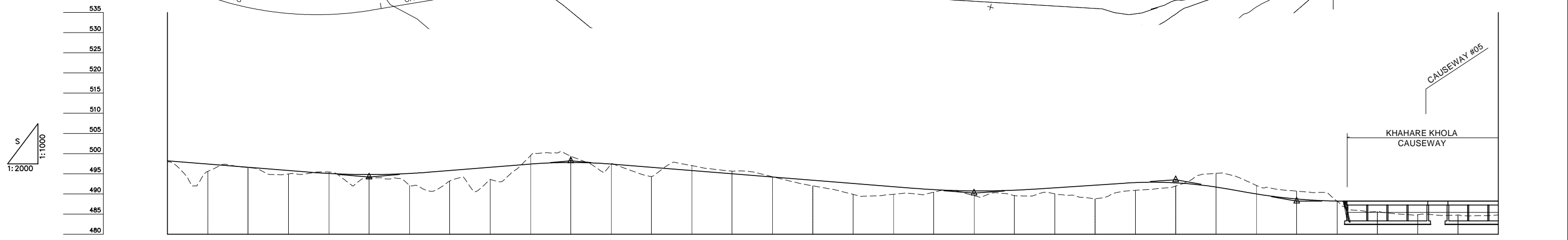
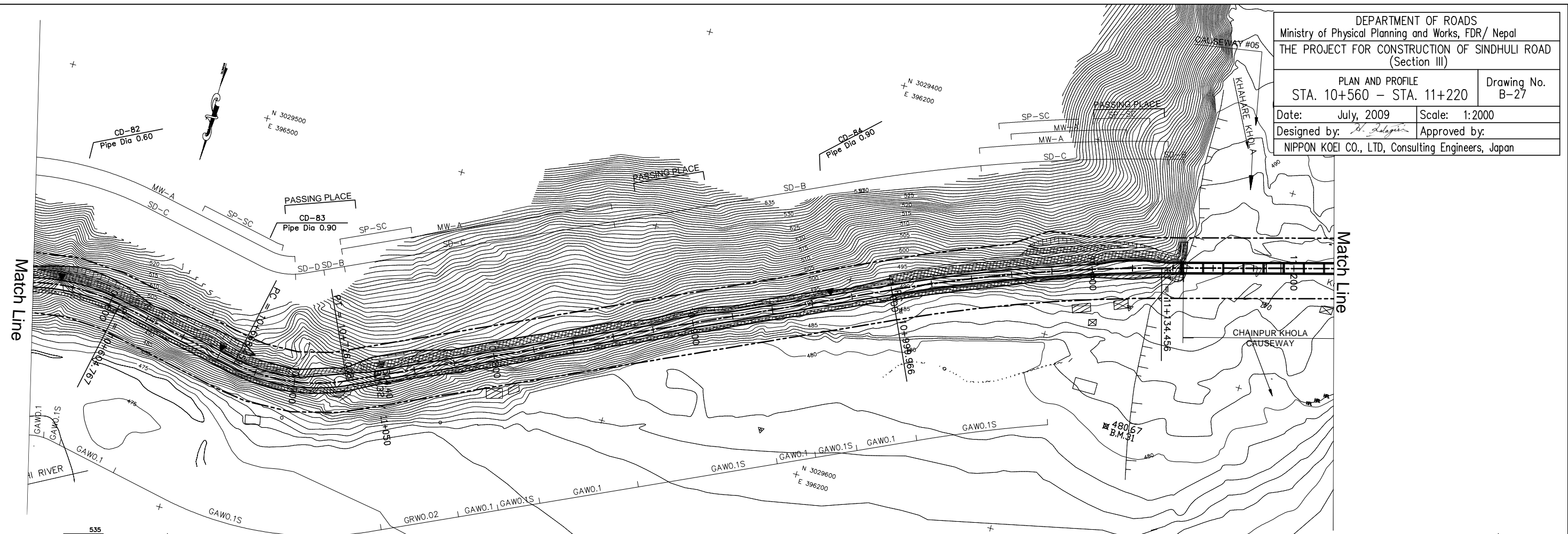


DEPARTMENT OF ROADS
 Ministry of Physical Planning and Works, FDR/ Nepal
 THE PROJECT FOR CONSTRUCTION OF SINDHULI ROAD
 (Section III)

PLAN AND PROFILE
 STA. 10+560 - STA. 11+220

Drawing No. B-27

Date: July, 2009 Scale: 1:2000
 Designed by: *S. Subedi* Approved by:
 NIPPON KOEI CO., LTD, Consulting Engineers, Japan



GRADE	PROPOSED HEIGHT	GROUND HEIGHT	STATION	CURVE ELEMENT	SUPER ELEVATION	WIDENING	DESIGN SPEED
499.000 10+540.000	488.200	498.437	10+560	R=100 L=77.466	Left: 0.00% Right: 0.00%		30 Km/h(40 Km/h)
-4.000% L=120.000	497.400	495.589	10+580				
494.200 10+660.000	496.600	496.534	10+600				
494.800	495.800	494.964	10+620				
495.067	495.067	495.426	10+640				
494.800	494.800	493.944	10+660				
495.067	495.067	492.188	10+680				
495.800	495.800	493.192	10+700				
496.600	496.600	493.564	10+720				
497.400	497.400	499.469	10+740				
497.800	497.800	499.372	10+760				
497.400	497.400	497.382	10+780				
496.600	496.600	494.314	10+800				
495.800	495.800	497.016	10+820				
495.000	495.000	495.638	10+840				
494.200	494.200	494.264	10+860				
493.400	493.400	492.018	10+880				
492.600	492.600	489.900	10+900				
491.800	491.800	489.916	10+920				
491.061	491.061	490.428	10+940				
490.748	490.748	489.560	10+960				
490.921	490.921	489.583	10+980				
491.520	491.520	490.040	11+000				
492.180	492.180	488.779	11+020				
492.810	492.810	490.892	11+040				
492.742	492.742	491.979	11+060				
491.703	491.703	495.099	11+080				
489.989	489.989	492.113	11+100				
488.752	488.752	490.686	11+120				
488.222	488.222	488.231	11+140				
488.200	488.200	485.670	11+160				
488.200	488.200	484.810	11+180				
488.200	488.200	484.754	11+200				
488.200	488.200	484.782	11+220				

