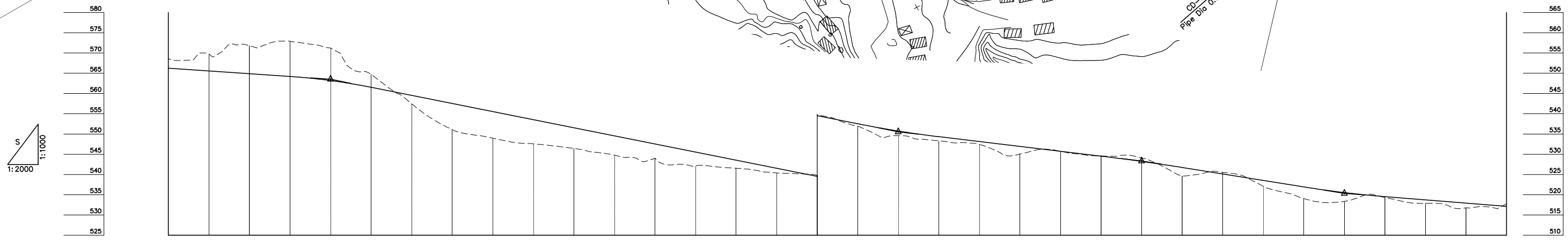
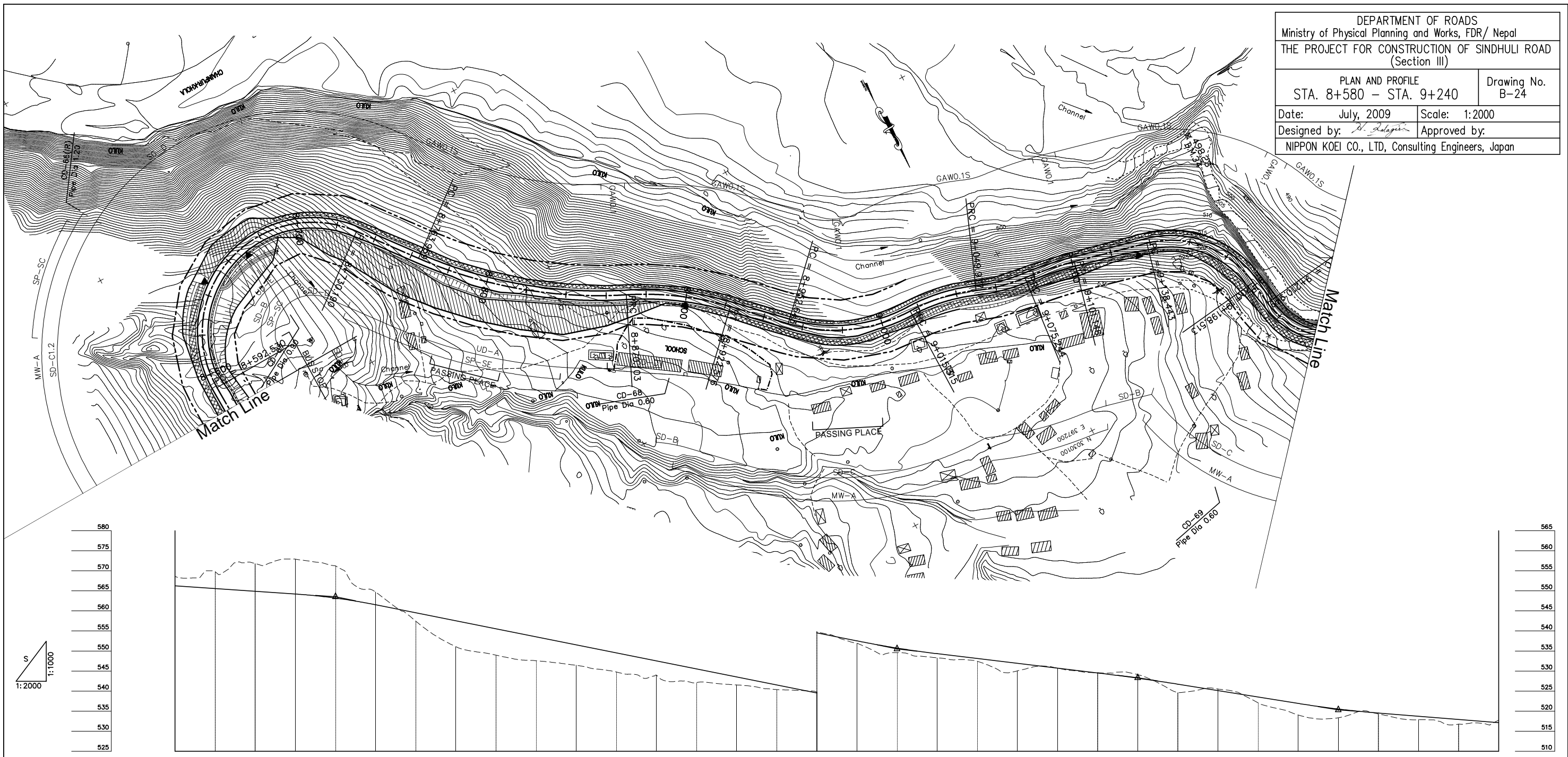


DEPARTMENT OF ROADS  
 Ministry of Physical Planning and Works, FDR/ Nepal  
 THE PROJECT FOR CONSTRUCTION OF SINDHULI ROAD  
 (Section III)

PLAN AND PROFILE  
 STA. 8+580 - STA. 9+240

Drawing No. B-24

Date: July, 2009 Scale: 1:2000  
 Designed by: *S. Halgiri* Approved by:  
 NIPPON KOEI CO., LTD, Consulting Engineers, Japan



GRADE		-3.400% L=280.000	563.530 R=55 L=137.659	-10.000% L=280.000	535.530 R=225 L=106.144	-6.000% L=120.000	528.330 R=90 L=25.267	-8.000% L=100.000	520.330 R=50 L=60.069	-4.000% L=610.750																								
PROPOSED HEIGHT	566.250	565.570	564.890	564.210	563.200	561.530	559.530	557.530	555.530	553.530	549.530	547.530	545.530	541.530	539.530	537.530	535.730	533.130	531.930	530.730	529.530	528.230	526.730	525.130	523.530	521.930	520.530	519.530	518.730	517.930	517.130			
GROUND HEIGHT	568.619	569.784	571.798	572.896	571.242	564.697	557.461	551.077	548.970	547.572	546.455	544.773	543.985	542.123	541.545	540.374	539.790	534.610	532.453	530.062	530.687	529.590	529.092	524.607	525.523	522.085	519.037	518.349	519.285	517.870	516.752	517.744		
STATION	8+580	8+600	8+620	8+640	8+660	8+680	8+700	8+720	8+740	8+760	8+780	8+800	8+820	8+840	8+860	8+880	8+900	8+920	8+940	8+960	8+980	9+000	9+020	9+040	9+060	9+080	9+100	9+120	9+140	9+160	9+180	9+200	9+220	9+240
CURVE ELEMENT		L=56.234 +592.530		L=33.769 +730.190		L=106.144 +763.959		L=52.473 +870.103		L=30.067 +922.576		L=62.671 +952.643		L=34.662 +015.315		L=25.267 +049.977		L=25.902 +075.244		L=37.298 +101.146		L=60.069 +138.443		L=12.437 +198.513		L=40.915 +210.949								
SUPER ELEVATION	Left																																	
SUPER ELEVATION	Right																																	
WIDENING		1.75m	0.5m	1.25m	1.25m	1.25m	1.25m	1.25m	1.25m	1.25m	1.25m	1.25m	1.25m	1.25m	1.25m	1.25m	1.25m	1.25m	1.25m	1.25m	1.25m	1.25m	1.25m	1.25m	1.25m	1.25m	1.25m	1.25m	1.25m	1.25m	1.25m	1.25m	1.25m	
DESIGN SPEED	Running speed	30 Km/h(40 Km/h)																30 Km/h																