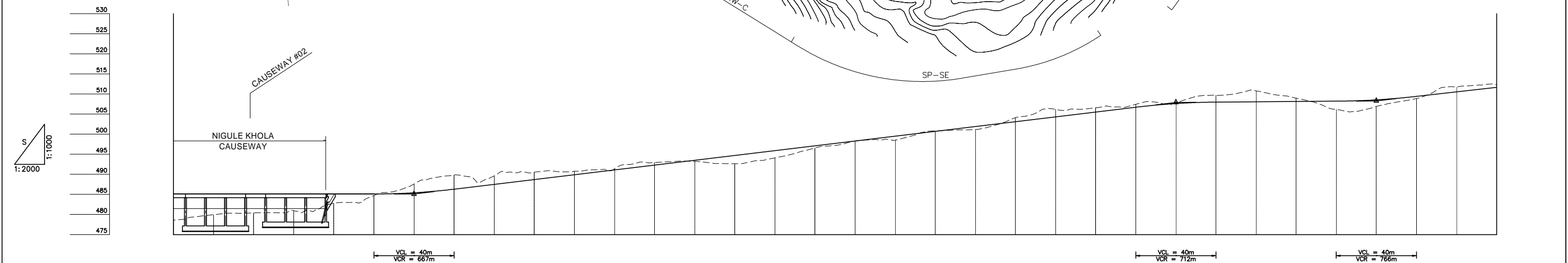
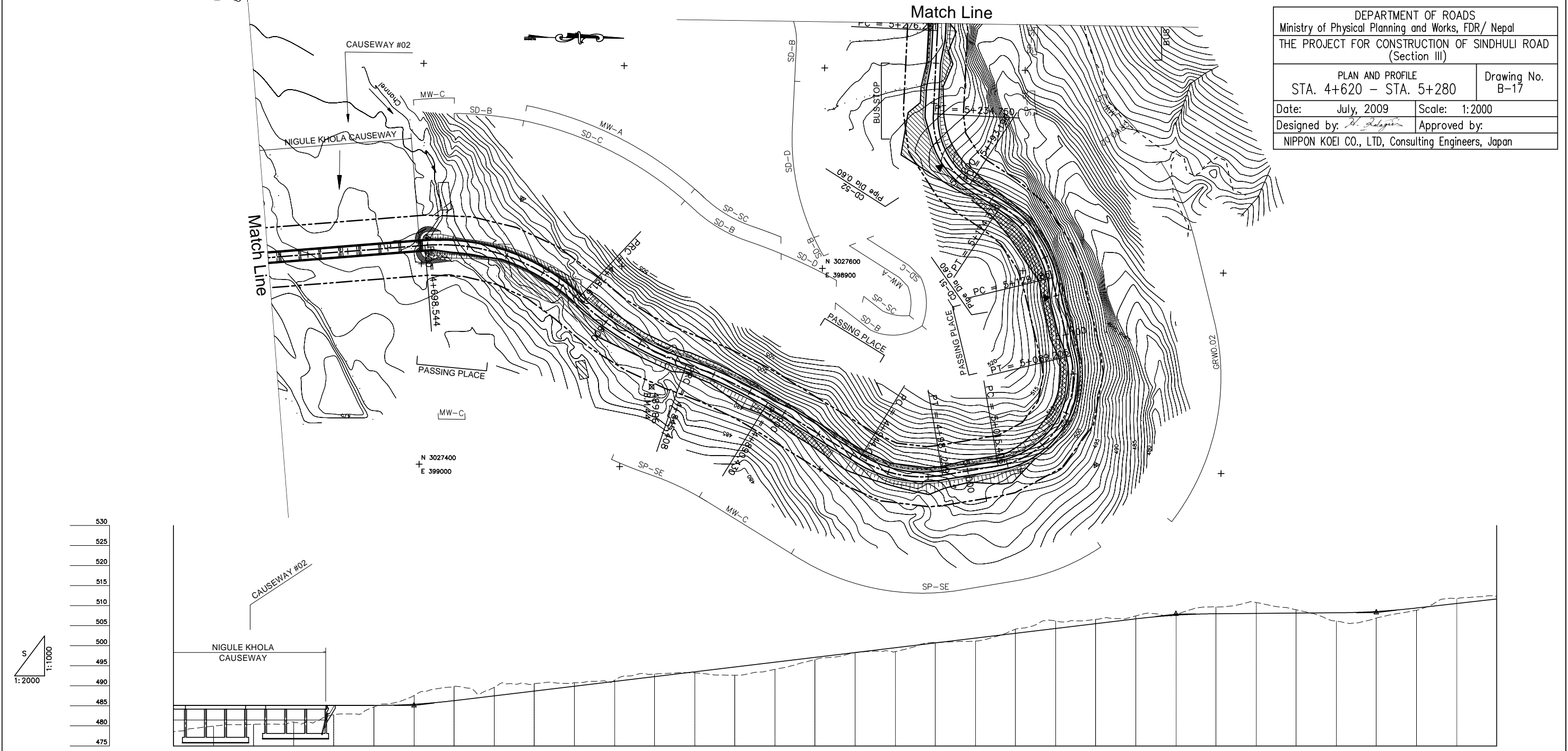


DEPARTMENT OF ROADS
 Ministry of Physical Planning and Works, FDR/ Nepal
 THE PROJECT FOR CONSTRUCTION OF SINDHULI ROAD
 (Section III)

PLAN AND PROFILE STA. 4+620 - STA. 5+280		Drawing No. B-17
Date: July, 2009	Scale: 1:2000	
Designed by: <i>B. Subedi</i>	Approved by:	
NIPPON KOEI CO., LTD, Consulting Engineers, Japan		



GRADE																																		
PROPOSED HEIGHT	485.100	485.100	485.100	485.100	485.100	485.100	485.400	486.300	487.500	488.700	489.900	491.100	492.300	493.500	494.700	495.900	497.100	498.300	499.500	500.700	501.900	503.100	504.300	505.500	506.700	507.619	507.976	508.052	508.128	508.204	508.541	509.400	510.520	511.640
GROUND HEIGHT	478.584	479.935	480.406	480.982	482.767	484.716	487.556	489.818	489.601	490.535	490.763	491.349	492.940	493.218	492.645	494.092	496.555	498.280	498.530	500.808	501.156	504.119	506.200	506.563	507.419	507.729	509.681	510.774	508.964	506.146	506.907	508.858	511.713	512.340
STATION	4+620	4+640	4+660	4+680	4+700	4+720	4+740	4+760	4+780	4+800	4+820	4+840	4+860	4+880	4+900	4+920	4+940	4+960	4+980	5+000	5+020	5+040	5+060	5+080	5+100	5+120	5+140	5+160	5+180	5+200	5+220	5+240	5+260	5+280
CURVE ELEMENT																																		
SUPER ELEVATION																																		
WIDENING																																		
DESIGN SPEED	30 Km/h																																	