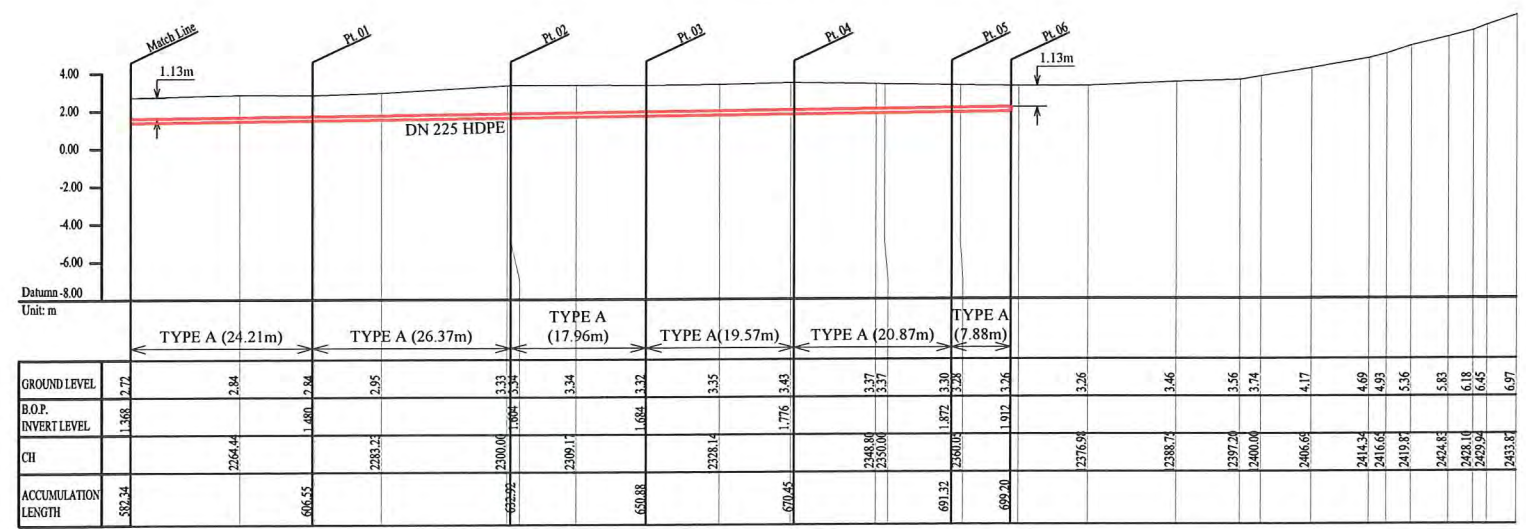


PLAN VIEW  
Scale : 1:1000

HDPE PIPE BENDING POINT COORDINATES

Corner Pt. No.	EASTING	NORTHING
PI55-Pt.01	109403.85	102789.98
PI55-Pt.02	109411.10	102764.65
PI55-Pt.03	109414.94	102747.16
PI55-Pt.04	109418.42	102727.91
PI55-Pt.05	109423.17	102707.55
PI55-Pt.06	109425.05	102700.00



SCALES HOR 1 : 1000 VER 1 : 400

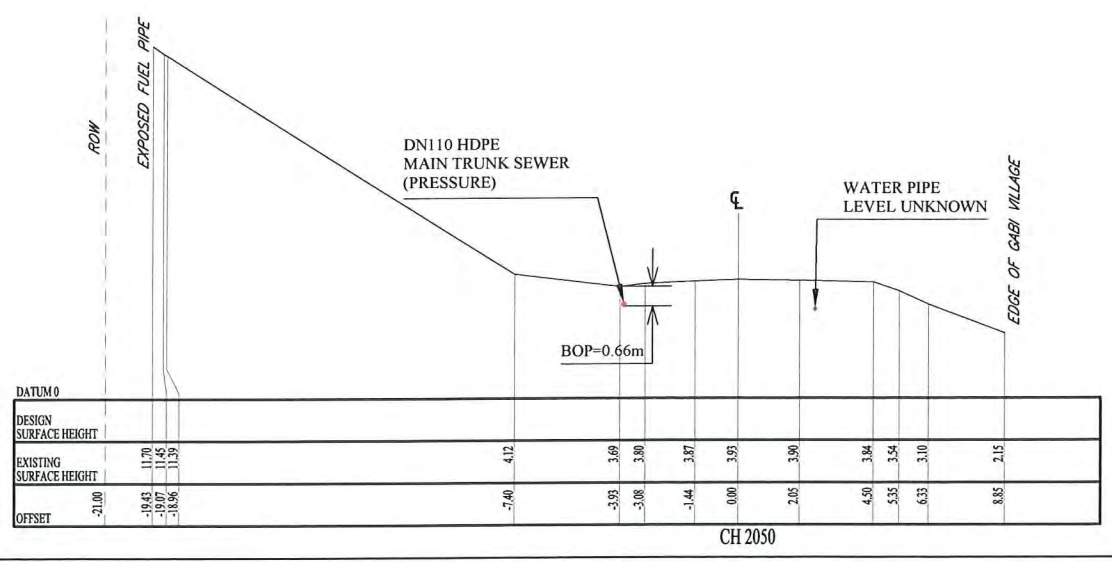
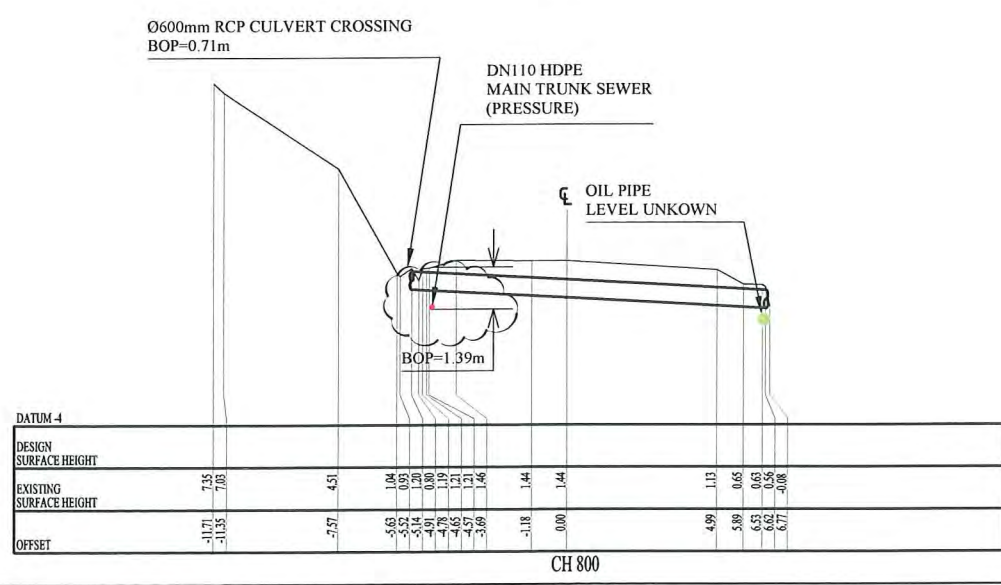
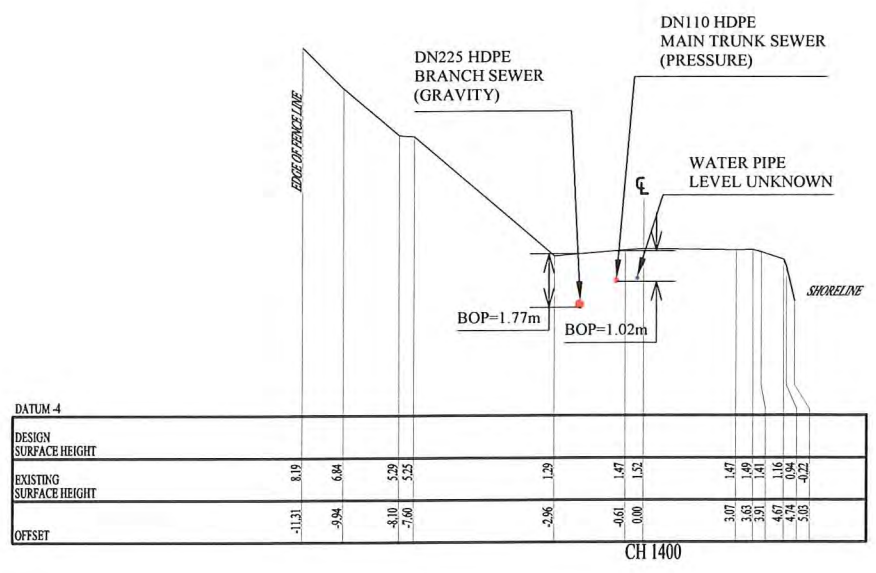
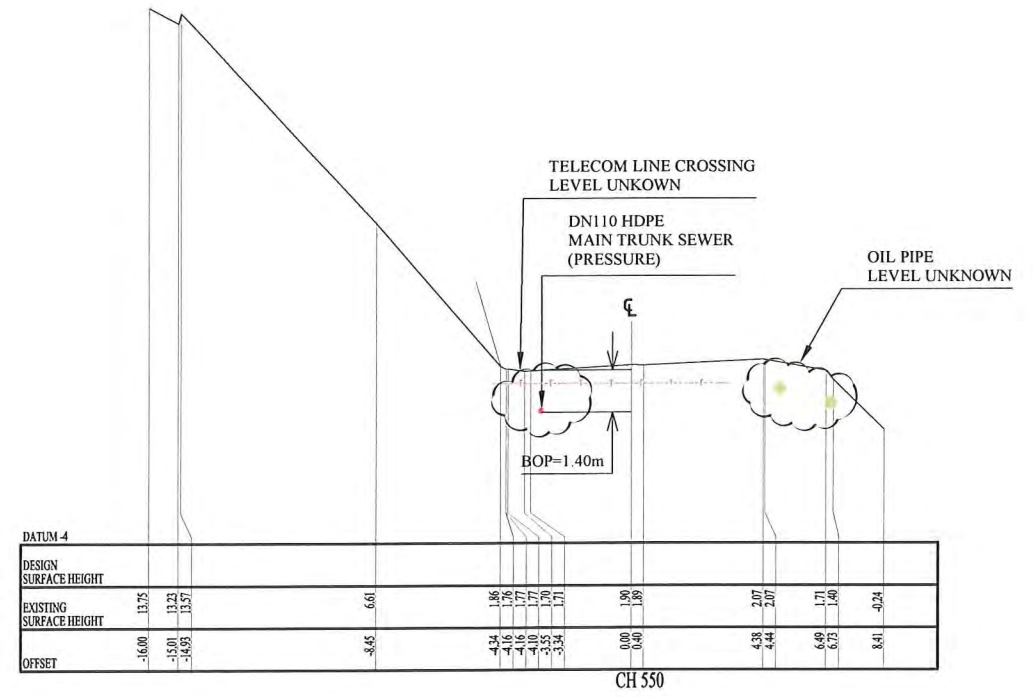
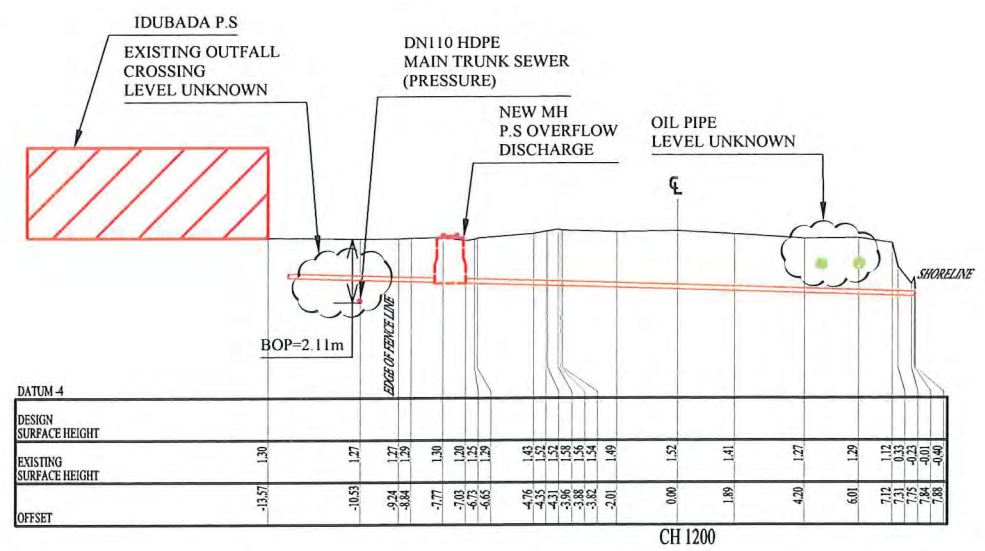
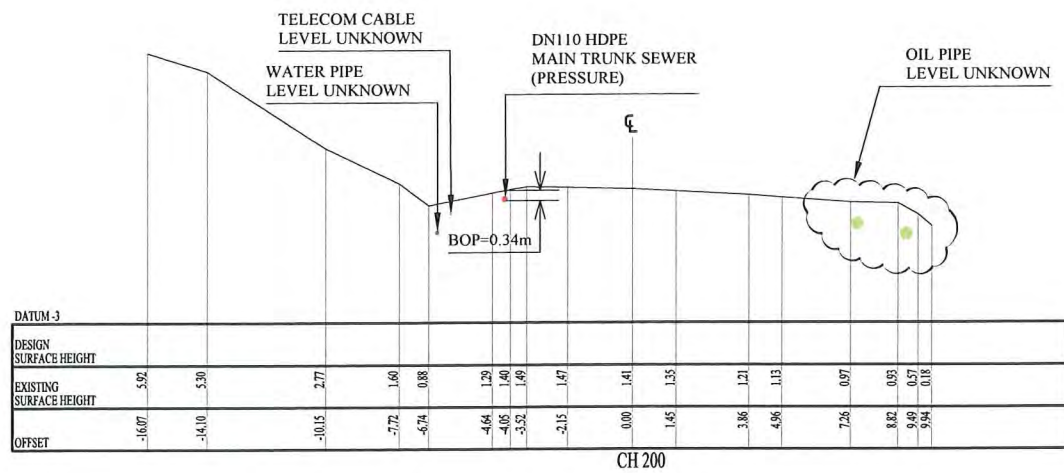
**LEGEND**

- PROPOSED SEWER
- POWER POLE WITH OVERHEAD POWER LINES
- POWER POLE WITH LIGHT
- ELECTRICITY TRANSMISSION TOWER
- ELECTRICITY PIT
- UNDER GROUND POWER CABLE
- TELECOM PIT
- TELECOM MARKER POST
- TELECOM LINE
- FUEL PIPE
- MANHOLE WITH UNDER GROUND SEWER PIPE
- WATER VALVE BOX
- STOP VALVE
- WATER TAP
- FIRE HYDRANT
- WATER METER
- EXISTING SEWER PIPE
- PALM TREE
- TREE
- WATER LINE
- FENCE LINE WITH GATE
- BITUMEN SEALED ROAD

- NOTES BELOW APPLY TO PIPELINE WORK SHOWN
- LOCATION OF UNDERGROUND UTILITIES SHOWN ON THESE PLANS ARE APPROXIMATE ONLY. DETAILS ARE SHOWN IN STANDARD AND PARTICULAR SPECIFICATIONS.
  - UNDERGROUND UTILITY SERVICES TO RESIDENTIAL, PUBLIC AND COMMERCIAL BUILDINGS OR FACILITIES HAVE NOT BEEN SHOWN BUT SHALL BE LOCATED AND PROTECTED IN A SIMILAR MANNER AS DESCRIBED ABOVE BY THE CONTRACTOR.
  - MINIMUM COVER IS 60cm FOR UNPAVED ROAD AND 90cm FOR ASPHALT / CONCRETE PAVED ROAD IF NOT DESCRIBED ON THE DRAWINGS.
- Type A - Soil/others  
Type B - Asphalt (Road)  
Type C - Walkway

PROJECT: PORT MORESBY SEWERAGE SYSTEM UPGRADING PROJECT (POMSSUP)		TITLE: Trunk Main Pipe Plan and Profile (Horse Camp to STP_55/55)																
CLIENT: IPBC INDEPENDENT PUBLIC BUSINESS CORPORATION PORT MORESBY SEWERAGE SYSTEM UPGRADING PROJECT PROJECT MANAGEMENT UNIT (PMU) jica JAPAN INTERNATIONAL COOPERATION AGENCY	CONSULTANTS: NJS CONSULTANTS CO., LTD. - JAPAN	NOTES:	<table border="1" style="width: 100%;"> <thead> <tr> <th colspan="3">REVISIONS</th> </tr> <tr> <th>REV.</th> <th>DATE</th> <th>DESCRIPTION</th> </tr> </thead> <tbody> <tr><td> </td><td> </td><td> </td></tr> <tr><td> </td><td> </td><td> </td></tr> <tr><td> </td><td> </td><td> </td></tr> </tbody> </table>	REVISIONS			REV.	DATE	DESCRIPTION									
REVISIONS																		
REV.	DATE	DESCRIPTION																
APPROVED by PMU: Project Director Lot G.Zauya		DATE: 1. Dec 2011	SCALE: 1/1000															
CHECKED by CONSULTANT Project Manager T.Fuji		DATE: 1. Dec 2011	DRAWING NO.: PI-55															





PROJECT: PORT MORESBY SEWERAGE SYSTEM UPGRADING PROJECT (POMSSUP)

TITLE: Trunk Main Pipe Typical Section (Kanudi to Hagara - 1/10)

CLIENT: INDEPENDENT PUBLIC BUSINESS CORPORATION  
 PORT MORESBY SEWERAGE SYSTEM UPGRADING PROJECT  
 PROJECT MANAGEMENT UNIT (PMU)  
 JAPAN INTERNATIONAL COOPERATION AGENCY

CONSULTANTS: NJS CONSULTANTS CO., LTD. - JAPAN

NOTES:

REVISIONS		
REV.	DATE	DESCRIPTION

APPROVED by PMU:  
 Project Director  
 Lot G.Zauya

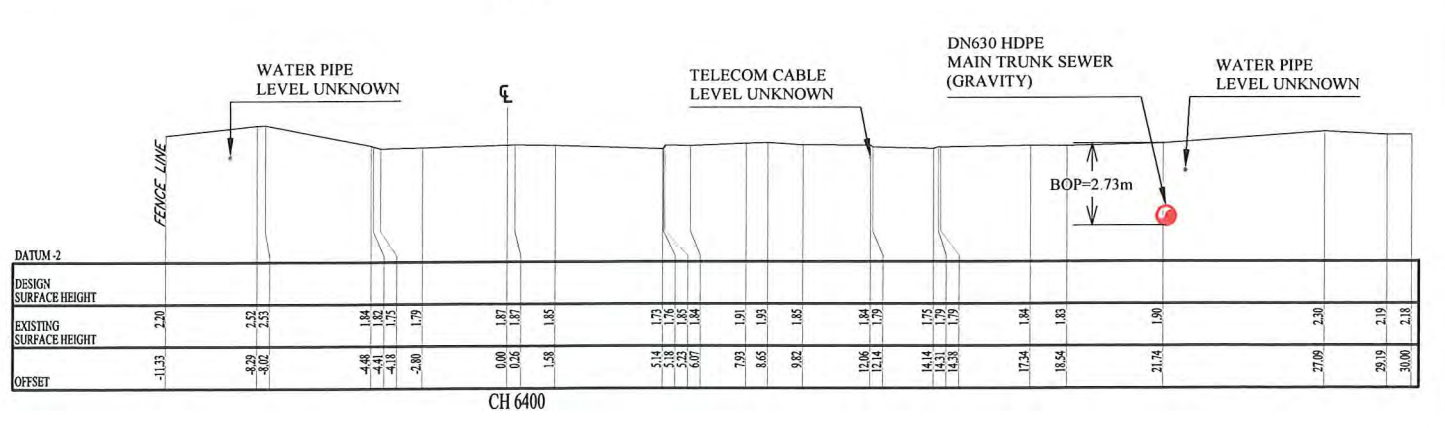
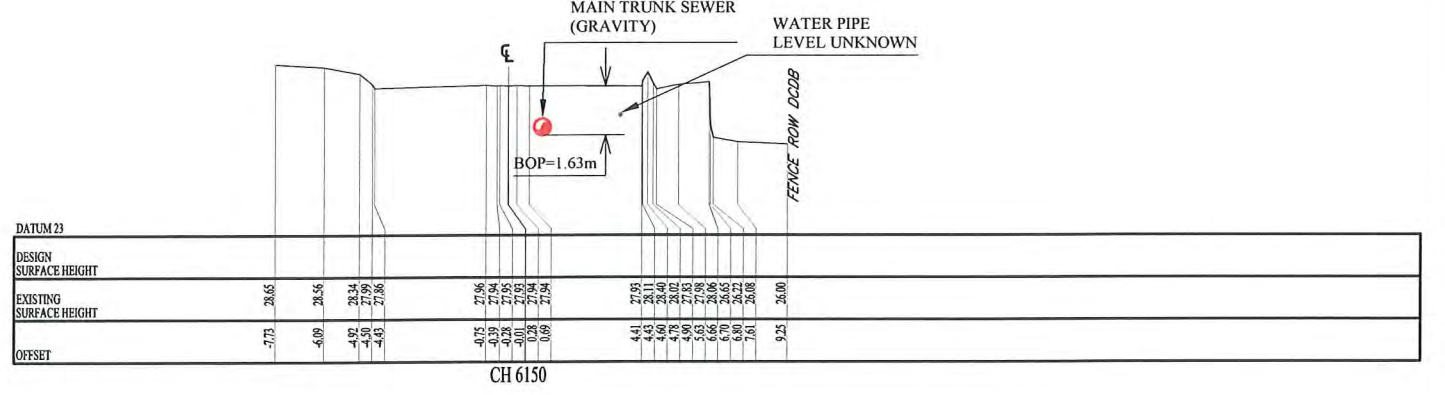
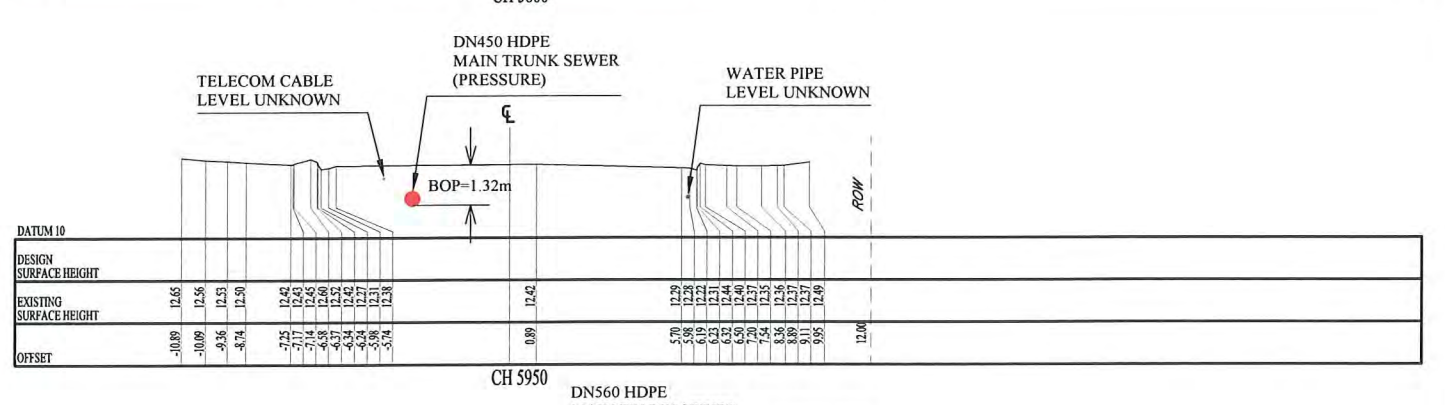
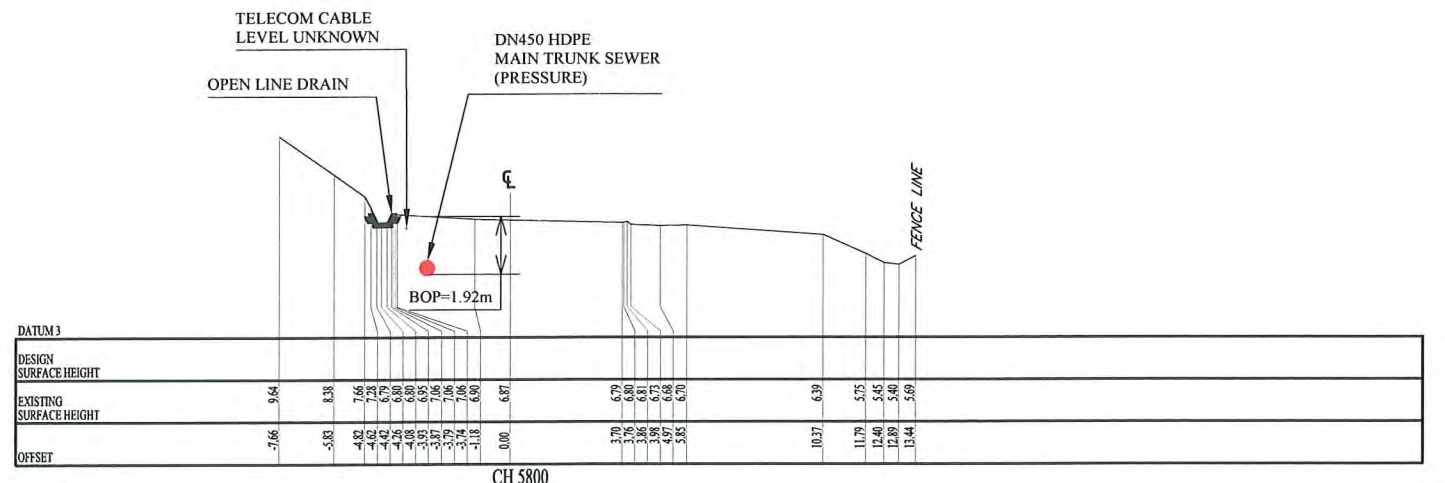
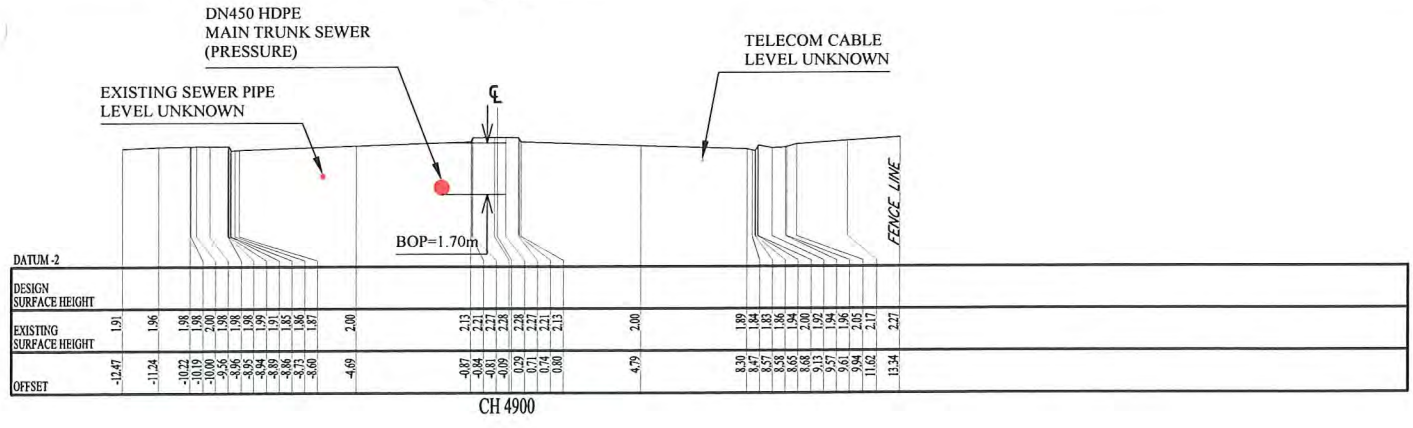
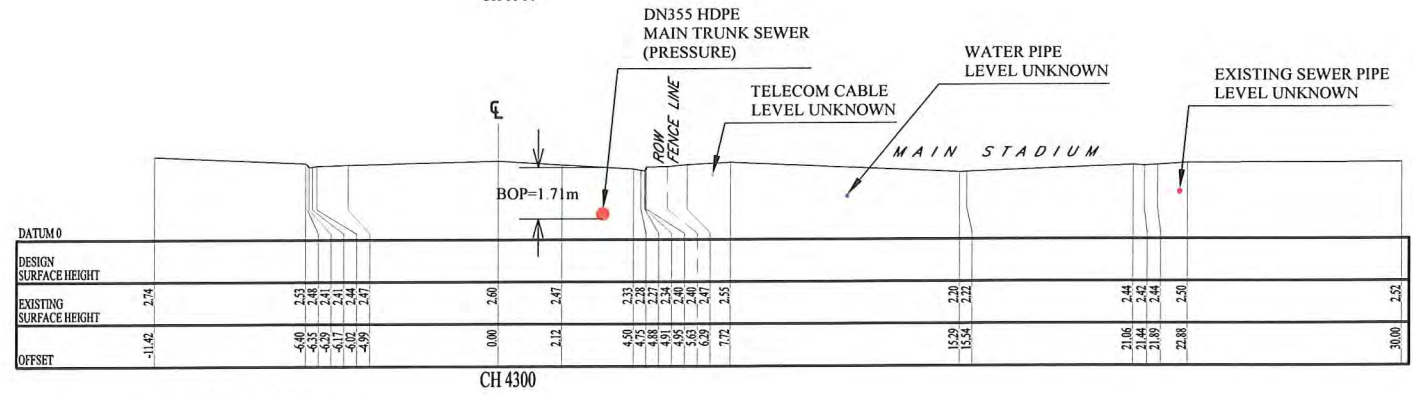
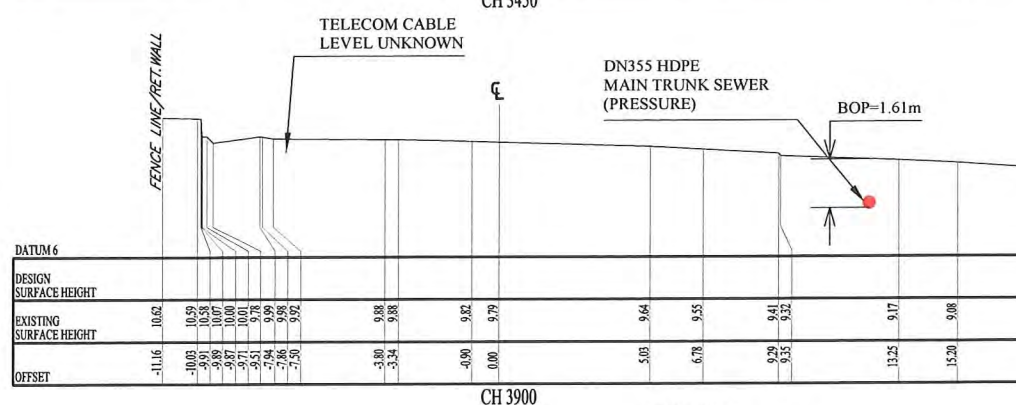
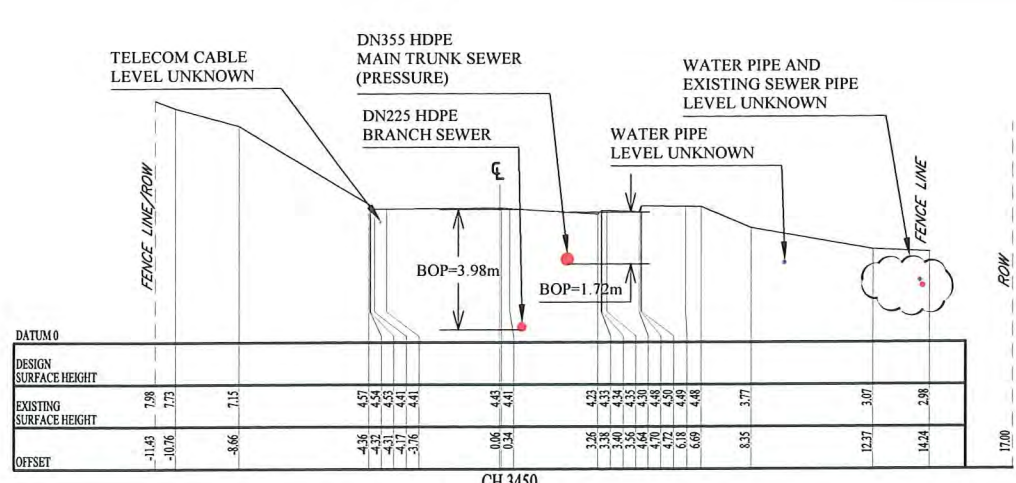
CHECKED by CONSULTANT  
 Project Manager  
 T.Fuji

DATE: 1. Dec 2011  
 DATE: 1. Dec 2011  
 SCALE: 1/250  
 DRAWING NO.: PI-56









PROJECT: PORT MORESBY SEWERAGE SYSTEM UPGRADING PROJECT (POMSSUP) TITLE: Trunk Main Pipe Typical Section (Hanuabada to Davara - 3/10)

CLIENT: INDEPENDENT PUBLIC BUSINESS CORPORATION  
 PORT MORESBY SEWERAGE SYSTEM UPGRADING PROJECT  
 PROJECT MANAGEMENT UNIT (PMU)  
 JAPAN INTERNATIONAL COOPERATION AGENCY

CONSULTANTS: NJS CONSULTANTS CO., LTD. - JAPAN

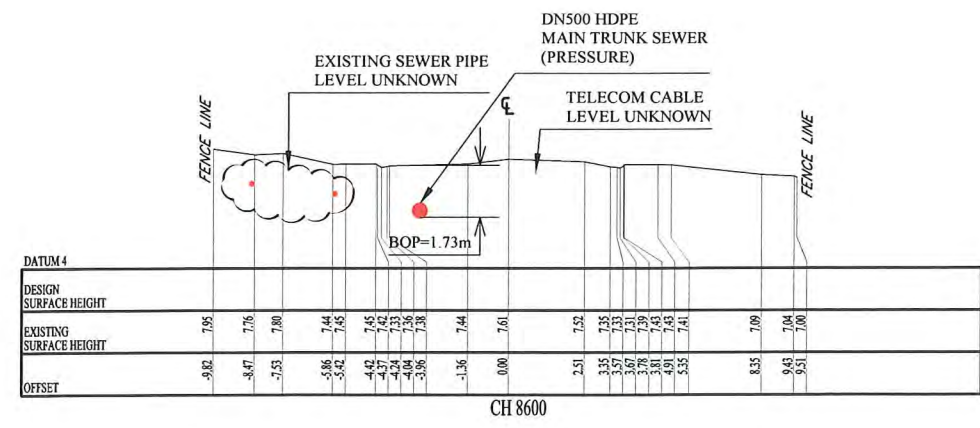
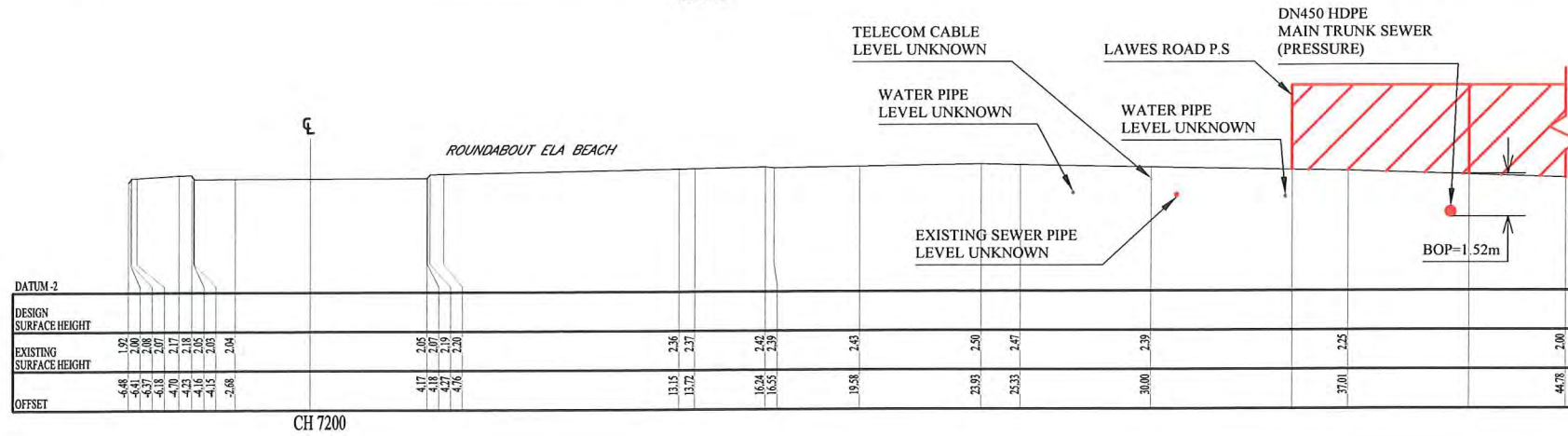
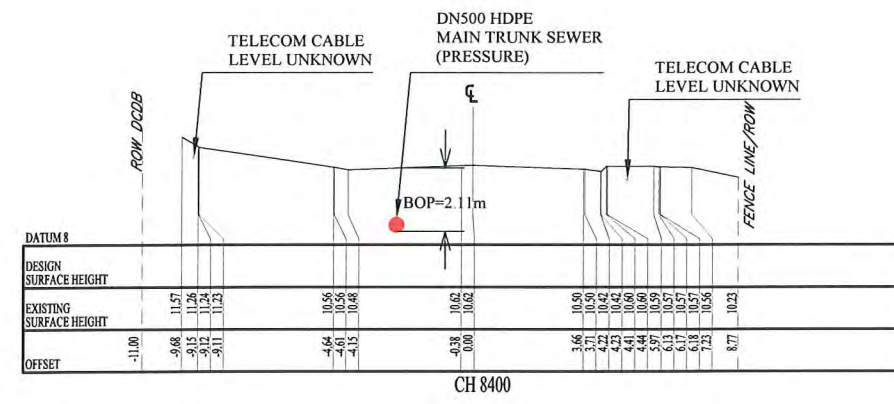
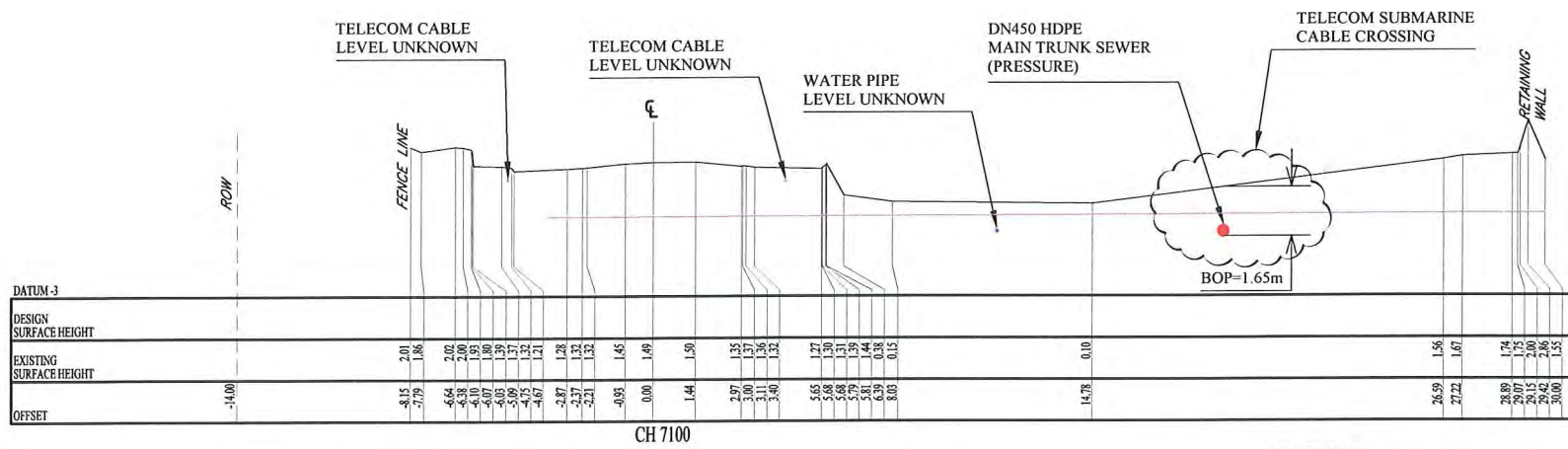
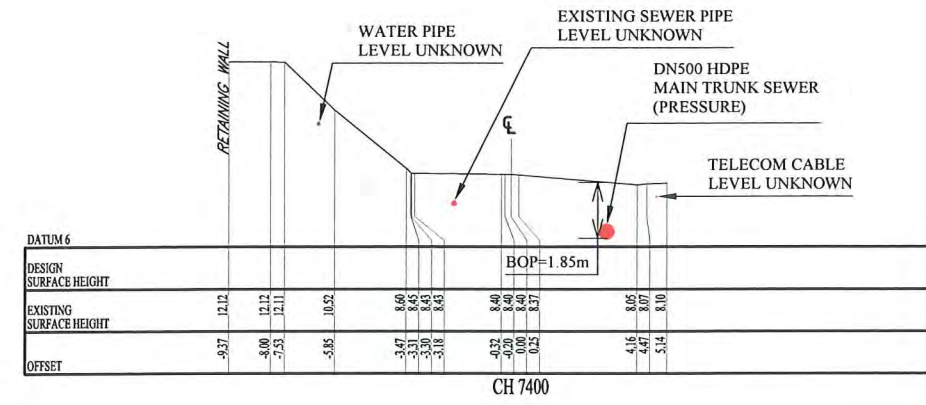
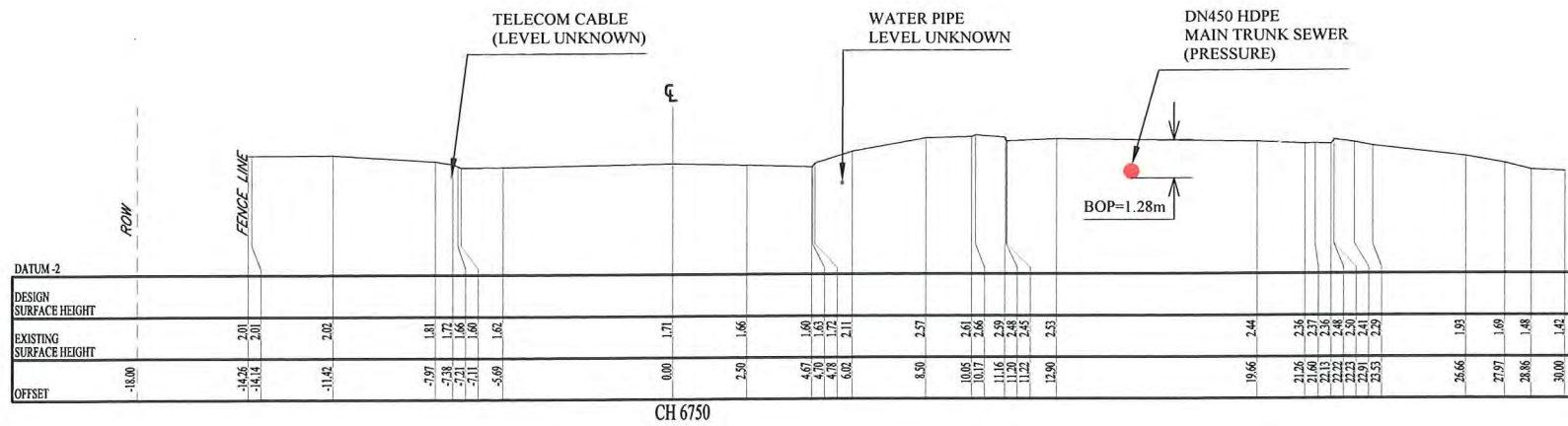
NOTES:

REVISIONS		
REV	DATE	DESCRIPTION

APPROVED by PMU:  
 Project Director  
 Lot G.Zauya  
 CHECKED by CONSULTANT  
 Project Manager  
 T.Fuji

DATE: 1. Dec 2011  
 DATE: 1. Dec 2011  
 SCALE: 1/250  
 DRAWING NO.: PI-58





PROJECT: PORT MORESBY SEWERAGE SYSTEM UPGRADING PROJECT (POMSSUP)

CLIENT: INDEPENDENT PUBLIC BUSINESS CORPORATION  
 PORT MORESBY SEWERAGE SYSTEM UPGRADING PROJECT  
 PROJECT MANAGEMENT UNIT (PMU)  
 JICA JAPAN INTERNATIONAL COOPERATION AGENCY

CONSULTANTS: NJS CONSULTANTS CO., LTD. - JAPAN

TITLE: Trunk Main Pipe Typical Section (Davara to Koki - 4/10)

NOTES:

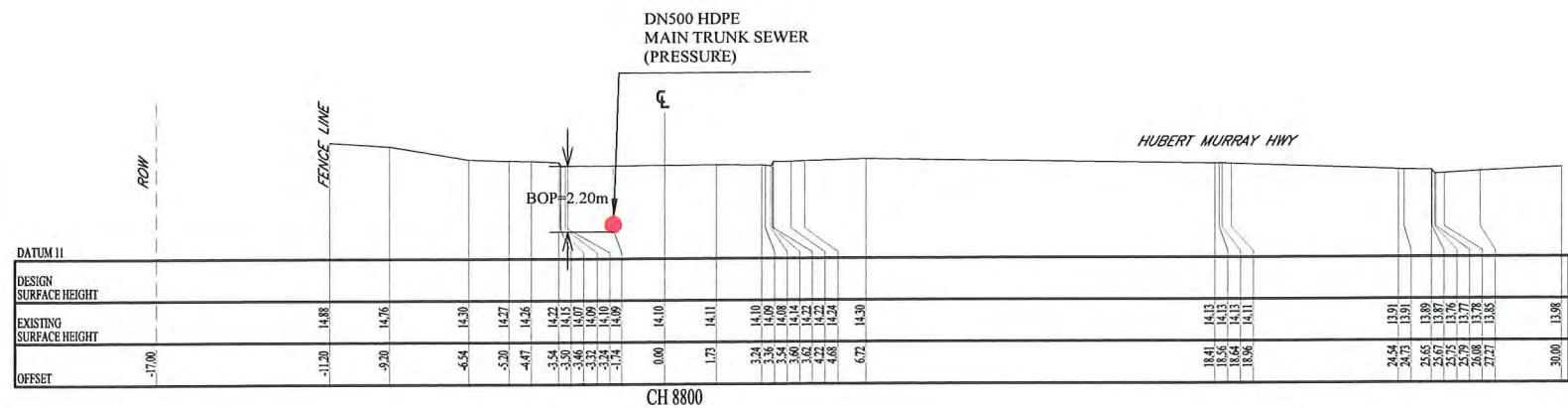
REVISIONS		
REV.	DATE	DESCRIPTION

APPROVED by PMU:  
 Project Director  
 Lot G Zauya

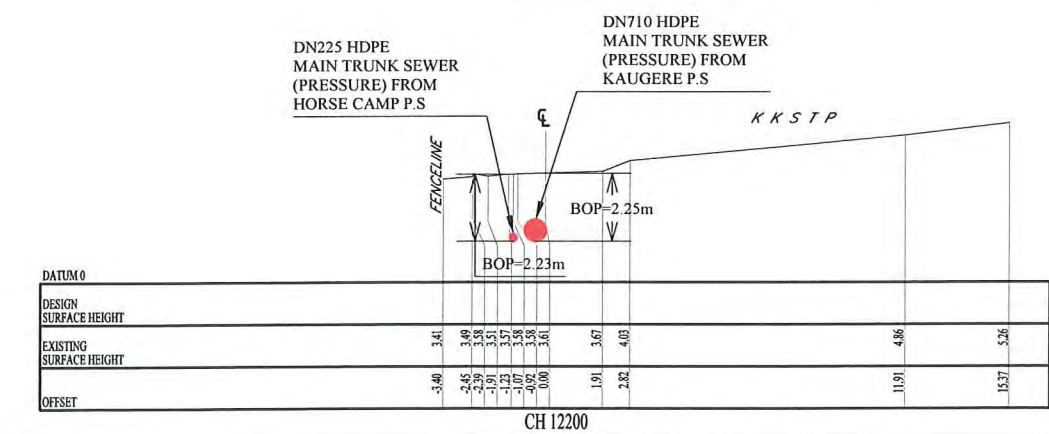
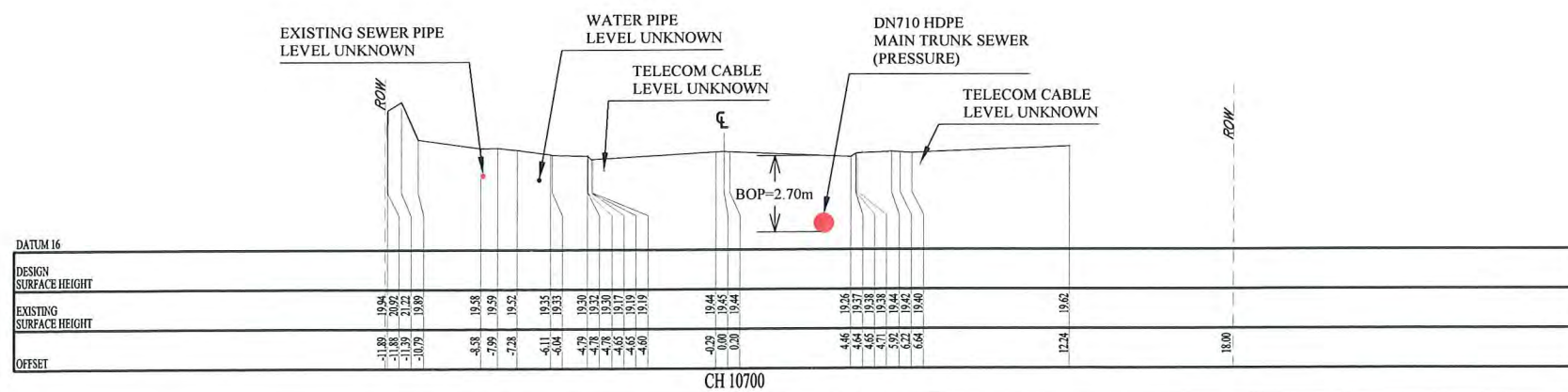
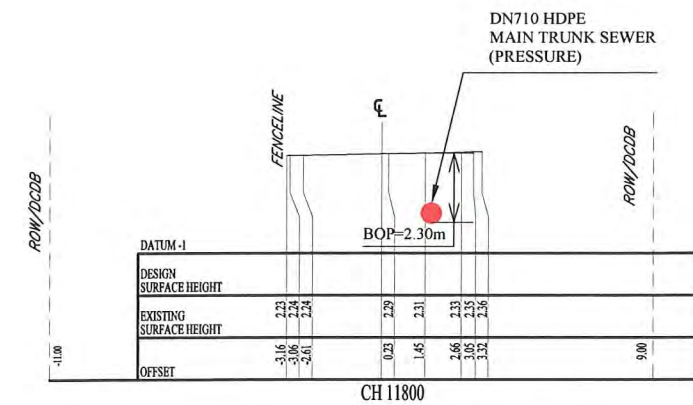
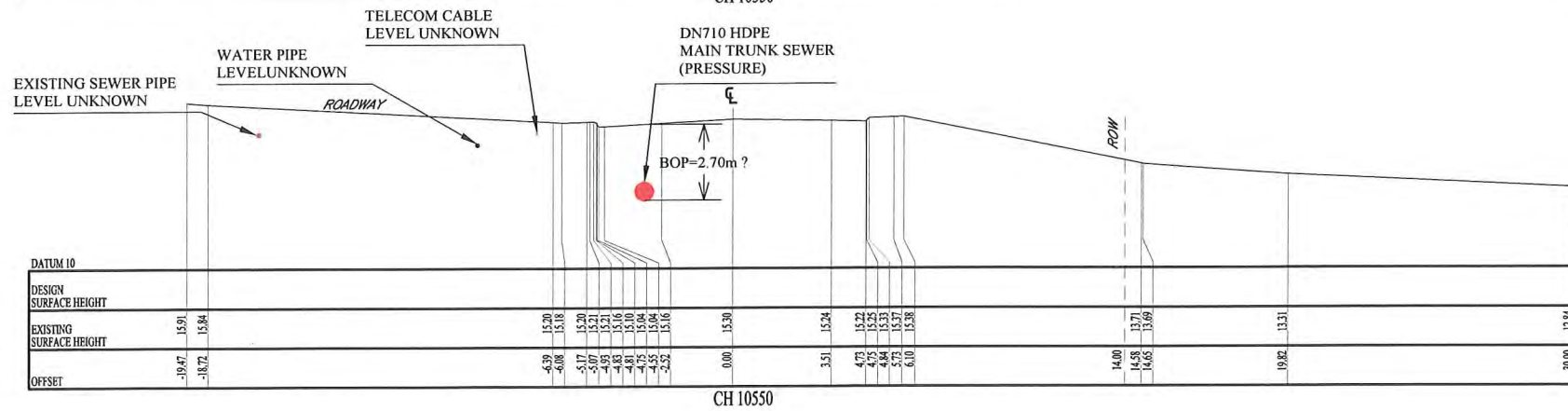
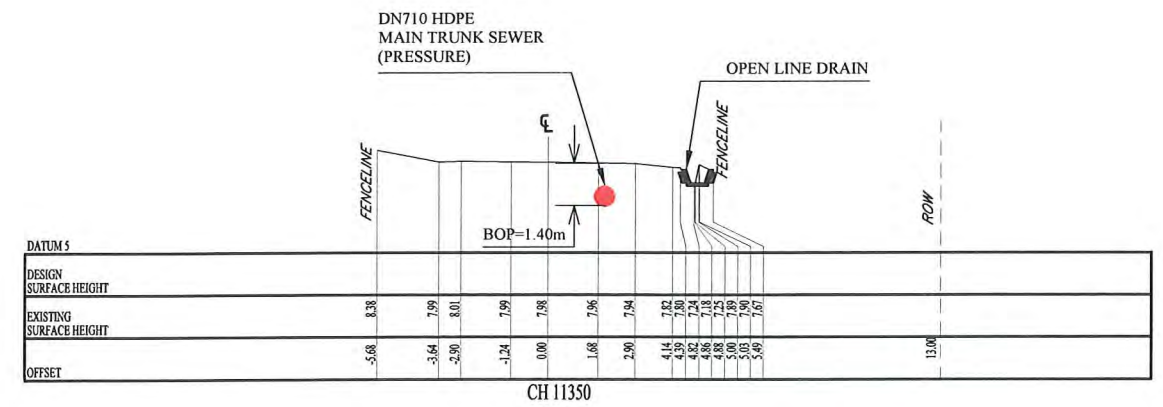
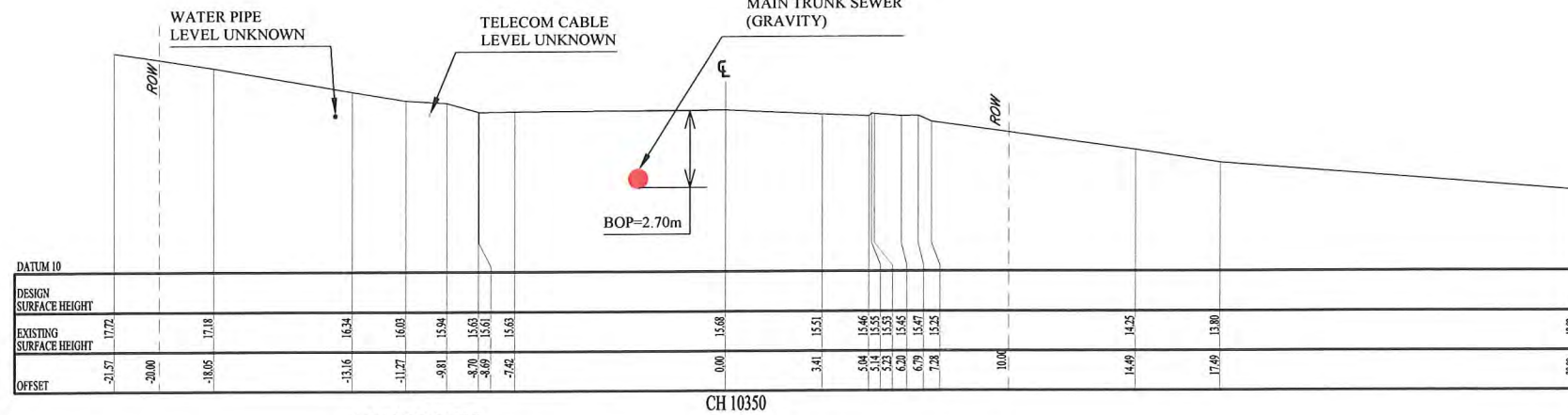
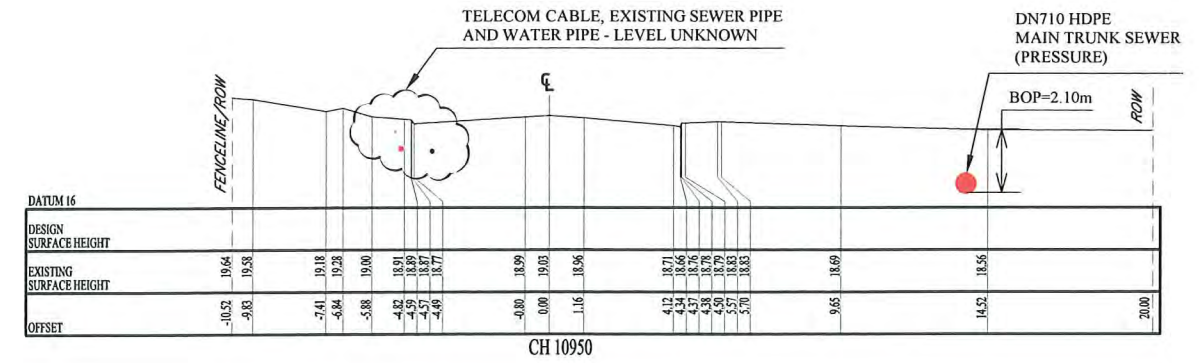
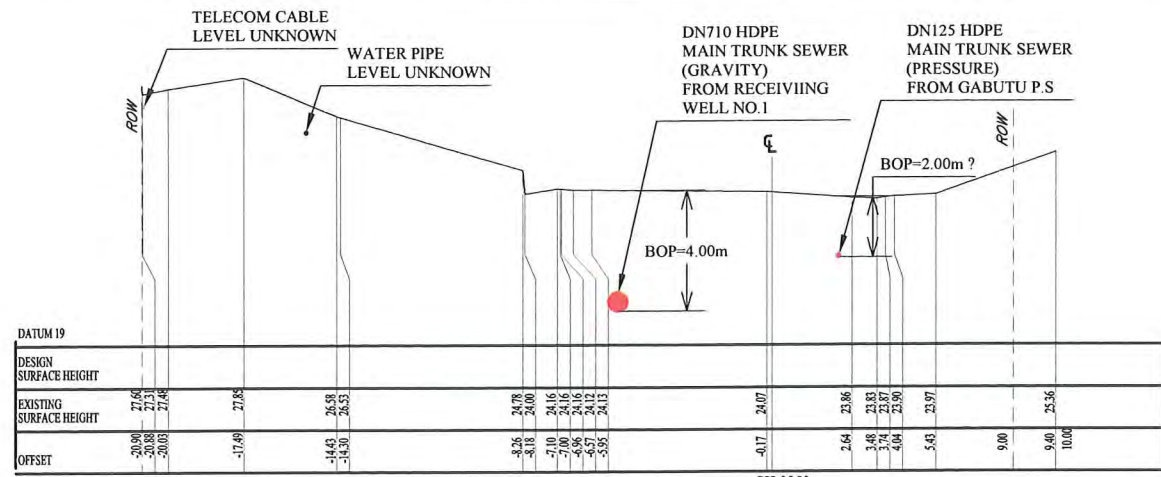
CHECKED by CONSULTANT  
 Project Manager  
 T Fuji

DATE: 1. Dec 2011  
 DATE: 1. Dec 2011  
 SCALE: 1/250  
 DRAWING NO.: PI-59









PROJECT: PORT MORESBY SEWERAGE SYSTEM UPGRADING PROJECT (POMSSUP)

CLIENT: INDEPENDENT PUBLIC BUSINESS CORPORATION  
 PORT MORESBY SEWERAGE SYSTEM UPGRADING PROJECT  
 PROJECT MANAGEMENT UNIT (PMU)  
 JICA JAPAN INTERNATIONAL COOPERATION AGENCY

CONSULTANTS: NJS CONSULTANTS CO., LTD. - JAPAN

TITLE: Trunk Main Pipe Typical Section (Receiving Well (1) to STP - 6/10)

NOTES:

REVISIONS		
REV.	DATE	DESCRIPTION

APPROVED by PMU:  
 Project Director  
 Lot G. Zauya

CHECKED by CONSULTANT  
 Project Manager  
 T. Fuji

DATE: 1. Dec 2011  
 DATE: 1. Dec 2011  
 SCALE: 1/250  
 DRAWING NO.: PI-61