

PROJECT: PORT MORESBY SEWERAGE SYSTEM UPGRADING PROJECT (POMSSUP) TITLE: Trunk Main Pipe Plan and Profile (Konebada to Gabutu_49/55)

CLIENT: INDEPENDENT PUBLIC BUSINESS CORPORATION PORT MORESBY SEWERAGE SYSTEM UPGRADING PROJECT PROJECT MANAGEMENT UNIT (PMU) JAPAN INTERNATIONAL COOPERATION AGENCY

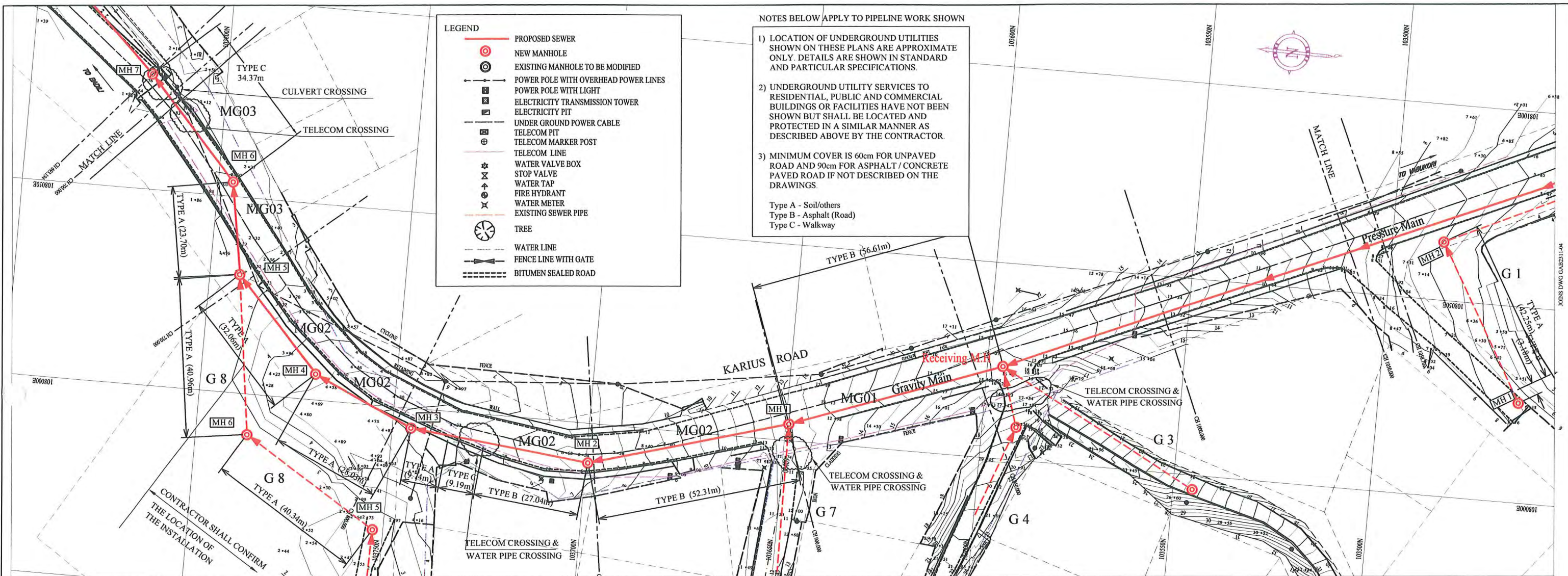
CONSULTANTS: NJS CONSULTANTS CO., LTD. - JAPAN

NOTES:

REVISIONS		
REV.	DATE	DESCRIPTION

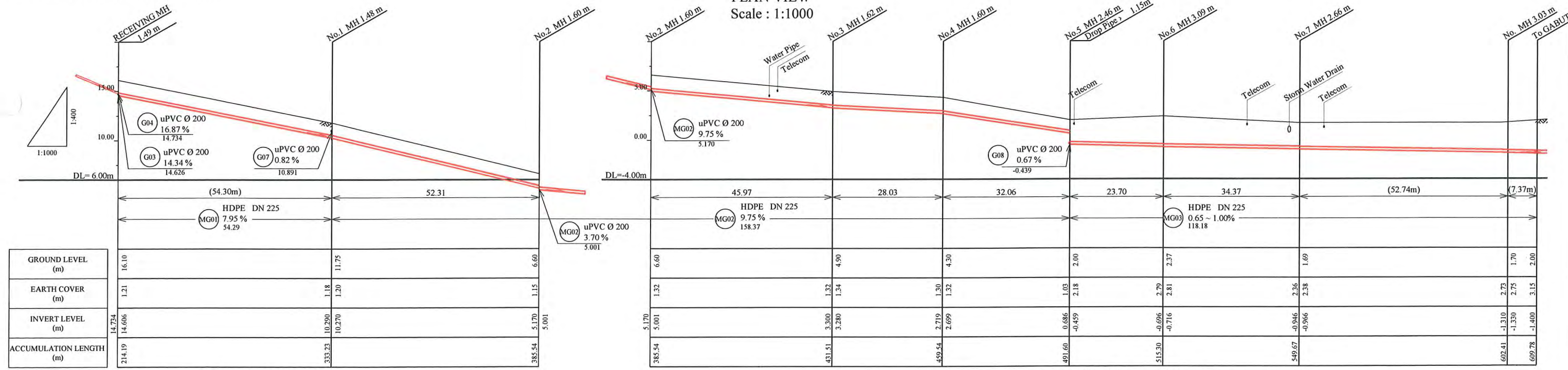
APPROVED by PMU: Project Director Lot G.Zauya
CHECKED by CONSULTANT: Project Manager T.Fuji

DATE: 1. Dec 2011 SCALE: 1/1000
DATE: 1. Dec 2011 DRAWING NO.: PI-49



NOTE: CADASTRAL BOUNDARIES TAKEN FROM DCDB

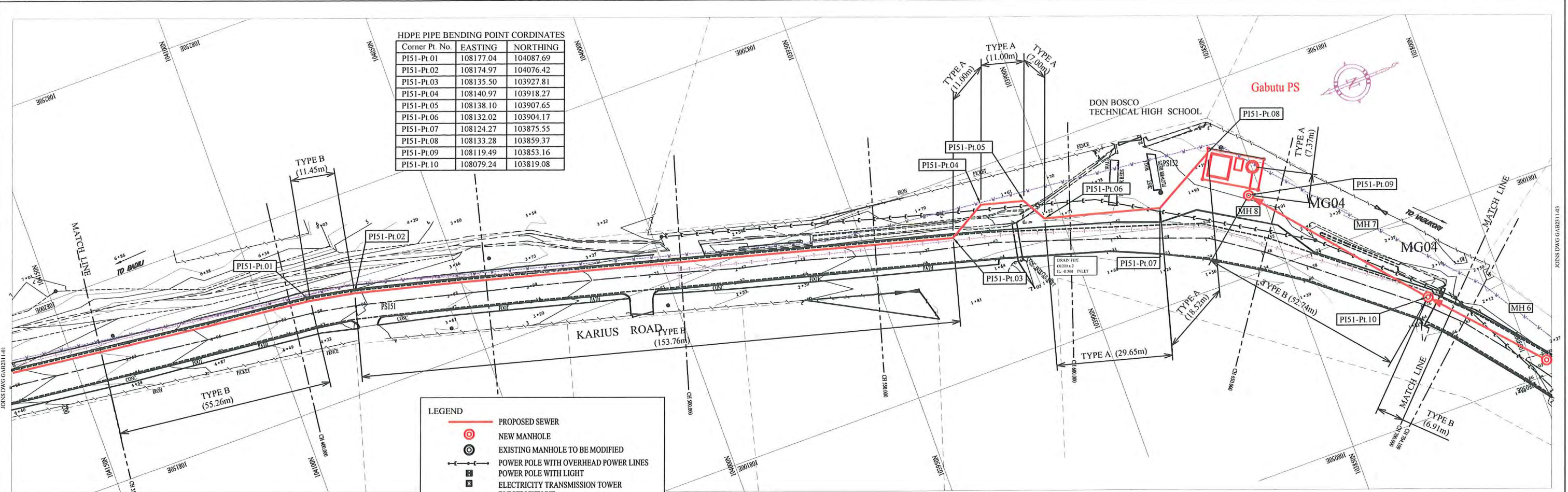
PLAN VIEW
Scale : 1:1000



SCALES HOR 1:1000 VER 1:400

SCALES HOR 1:1000 VER 1:400

PROJECT: PORT MORESBY SEWERAGE SYSTEM UPGRADING PROJECT (POMSSUP)		TITLE: Trunk Main Pipe Plan and Profile (Konebada to Gabutu_50/55)							
CLIENT: INDEPENDENT PUBLIC BUSINESS CORPORATION PORT MORESBY SEWERAGE SYSTEM UPGRADING PROJECT PROJECT MANAGEMENT UNIT (PMU)		CONSULTANTS: NJS CONSULTANTS CO., LTD. - JAPAN							
NOTES:		REVISIONS: <table border="1"> <thead> <tr> <th>REV.</th> <th>DATE</th> <th>DESCRIPTION</th> </tr> </thead> <tbody> <tr> <td> </td> <td> </td> <td> </td> </tr> </tbody> </table>		REV.	DATE	DESCRIPTION			
REV.	DATE	DESCRIPTION							
JAPAN INTERNATIONAL COOPERATION AGENCY		APPROVED by PMU: Project Director Lot G Zauya CHECKED by CONSULTANT: Project Manager T.Fuji							
DATE: 1. Dec 2011		SCALE: 1/1000							
DATE: 1. Dec 2011		DRAWING NO.: PI-50							



LEGEND

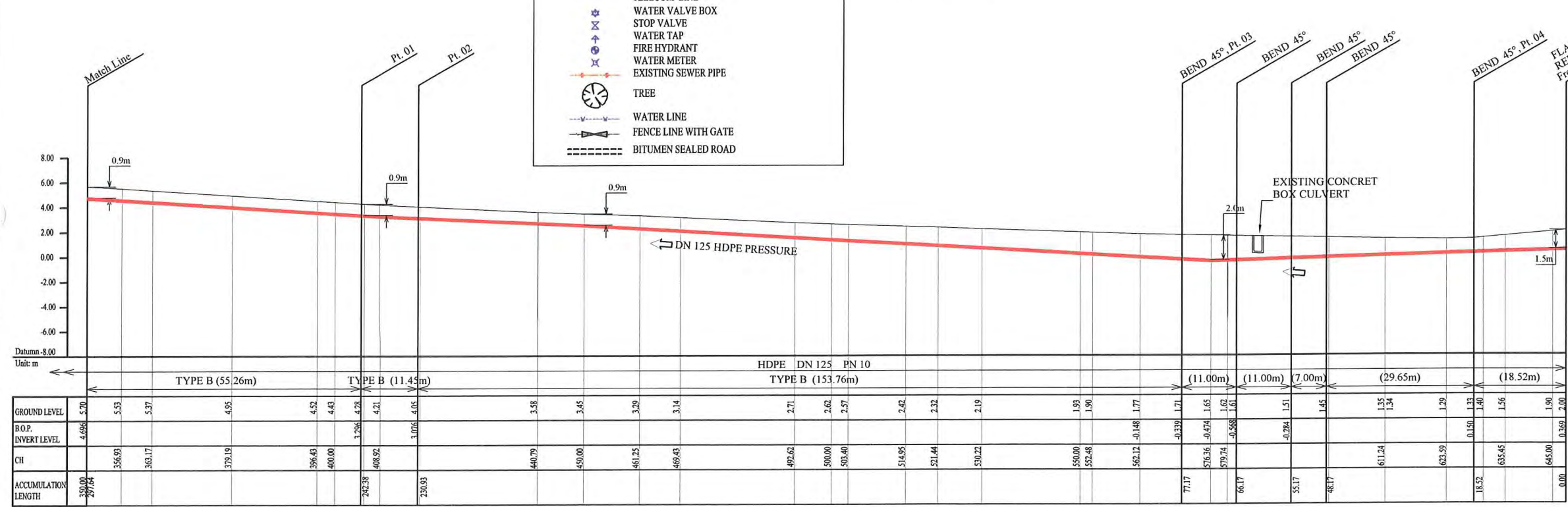
- PROPOSED SEWER
- NEW MANHOLE
- EXISTING MANHOLE TO BE MODIFIED
- POWER POLE WITH OVERHEAD POWER LINES
- POWER POLE WITH LIGHT
- ELECTRICITY TRANSMISSION TOWER
- ELECTRICITY PIT
- UNDER GROUND POWER CABLE
- TELECOM PIT
- TELECOM MARKER POST
- TELECOM LINE
- WATER VALVE BOX
- STOP VALVE
- WATER TAP
- FIRE HYDRANT
- WATER METER
- EXISTING SEWER PIPE
- TREE
- WATER LINE
- FENCE LINE WITH GATE
- BITUMEN SEALED ROAD

PLAN VIEW
Scale : 1:1000

NOTES BELOW APPLY TO PIPELINE WORK SHOWN

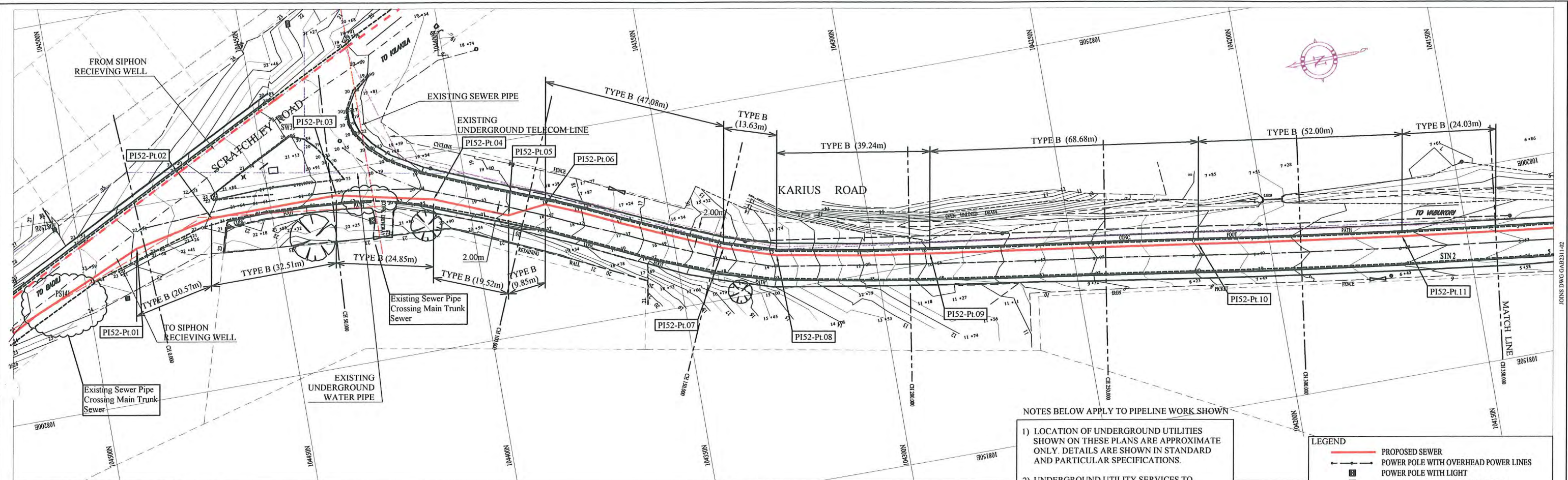
- 1) LOCATION OF UNDERGROUND UTILITIES SHOWN ON THESE PLANS ARE APPROXIMATE ONLY. DETAILS ARE SHOWN IN STANDARD AND PARTICULAR SPECIFICATIONS
- 2) UNDERGROUND UTILITY SERVICES TO RESIDENTIAL, PUBLIC AND COMMERCIAL BUILDINGS OR FACILITIES HAVE NOT BEEN SHOWN BUT SHALL BE LOCATED AND PROTECTED IN A SIMILAR MANNER AS DESCRIBED ABOVE BY THE CONTRACTOR.
- 3) MINIMUM COVER IS 60cm FOR UNPAVED ROAD AND 90cm FOR ASPHALT / CONCRETE PAVED ROAD IF NOT DESCRIBED ON THE DRAWINGS.

Type A - Soil/others
Type B - Asphalt (Road)
Type C - Walkway



SCALES HOR 1 : 1000 VER 1 : 4100

PROJECT: PORT MORESBY SEWERAGE SYSTEM UPGRADING PROJECT (POMSSUP)		TITLE: Trunk Main Pipe Plan and Profile (Gabutu to Receiving Well No.1_51/55)	
CLIENT: INDEPENDENT PUBLIC BUSINESS CORPORATION PORT MORESBY SEWERAGE SYSTEM UPGRADING PROJECT PROJECT MANAGEMENT UNIT (PMU)	CONSULTANTS: NJS CONSULTANTS CO., LTD. - JAPAN	NOTES:	APPROVED BY PMU: Project Director Lot G.Zauya
JICA JAPAN INTERNATIONAL COOPERATION AGENCY			CHECKED BY CONSULTANT Project Manager T.Fuji
			DATE: 1. Dec 2011
			SCALE: 1/1000
			DRAWING NO.: PI-51



NOTE: CADASTRAL BOUNDARIES TAKEN FROM DCDB

PLAN VIEW
Scale : 1:1000

HDPE PIPE BENDING POINT CORDINATES

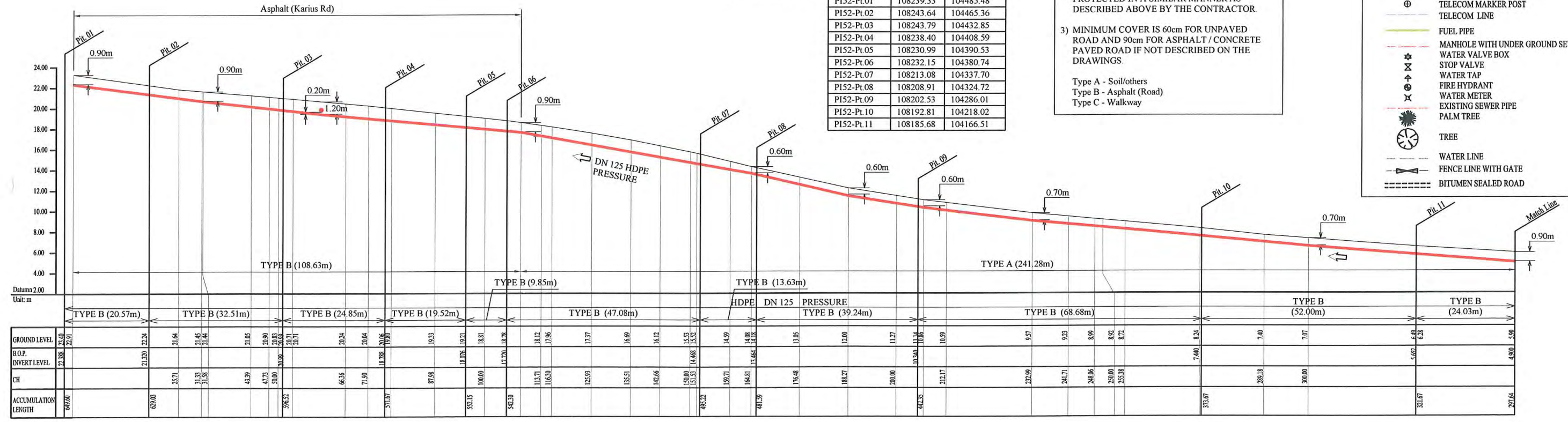
Corner Pt. No.	EASTING	NORTHING
PI52-Pt.01	108239.33	104485.48
PI52-Pt.02	108243.64	104465.36
PI52-Pt.03	108243.79	104432.85
PI52-Pt.04	108238.40	104408.59
PI52-Pt.05	108230.99	104390.53
PI52-Pt.06	108232.15	104380.74
PI52-Pt.07	108213.08	104337.70
PI52-Pt.08	108208.91	104324.72
PI52-Pt.09	108202.53	104286.01
PI52-Pt.10	108192.81	104218.02
PI52-Pt.11	108185.68	104166.51

NOTES BELOW APPLY TO PIPELINE WORK SHOWN

- 1) LOCATION OF UNDERGROUND UTILITIES SHOWN ON THESE PLANS ARE APPROXIMATE ONLY. DETAILS ARE SHOWN IN STANDARD AND PARTICULAR SPECIFICATIONS.
 - 2) UNDERGROUND UTILITY SERVICES TO RESIDENTIAL, PUBLIC AND COMMERCIAL BUILDINGS OR FACILITIES HAVE NOT BEEN SHOWN BUT SHALL BE LOCATED AND PROTECTED IN A SIMILAR MANNER AS DESCRIBED ABOVE BY THE CONTRACTOR.
 - 3) MINIMUM COVER IS 60cm FOR UNPAVED ROAD AND 90cm FOR ASPHALT / CONCRETE PAVED ROAD IF NOT DESCRIBED ON THE DRAWINGS.
- Type A - Soil/others
Type B - Asphalt (Road)
Type C - Walkway

LEGEND

- PROPOSED SEWER
- POWER POLE WITH OVERHEAD POWER LINES
- POWER POLE WITH LIGHT
- ELECTRICITY TRANSMISSION TOWER
- ELECTRICITY PIT
- UNDER GROUND POWER CABLE
- TELECOM PIT
- TELECOM MARKER POST
- TELECOM LINE
- FUEL PIPE
- MANHOLE WITH UNDER GROUND SEWER PIPE
- WATER VALVE BOX
- STOP VALVE
- WATER TAP
- FIRE HYDRANT
- WATER METER
- EXISTING SEWER PIPE
- PALM TREE
- TREE
- WATER LINE
- FENCE LINE WITH GATE
- BITUMEN SEALED ROAD



KARIUS ROAD
SCALES HOR 1:1000 VER 1:400

PORT MORESBY SEWERAGE SYSTEM UPGRADING PROJECT (POMSSUP)

Trunk Main Pipe Plan and Profile (Gabutu to Receiving Well No.1_52/55)

CLIENT:
 INDEPENDENT PUBLIC BUSINESS CORPORATION
 PORT MORESBY SEWERAGE SYSTEM UPGRADING PROJECT
 PROJECT MANAGEMENT UNIT (PMU)
 JAPAN INTERNATIONAL COOPERATION AGENCY

CONSULTANTS:
 NJS CONSULTANTS CO., LTD. - JAPAN

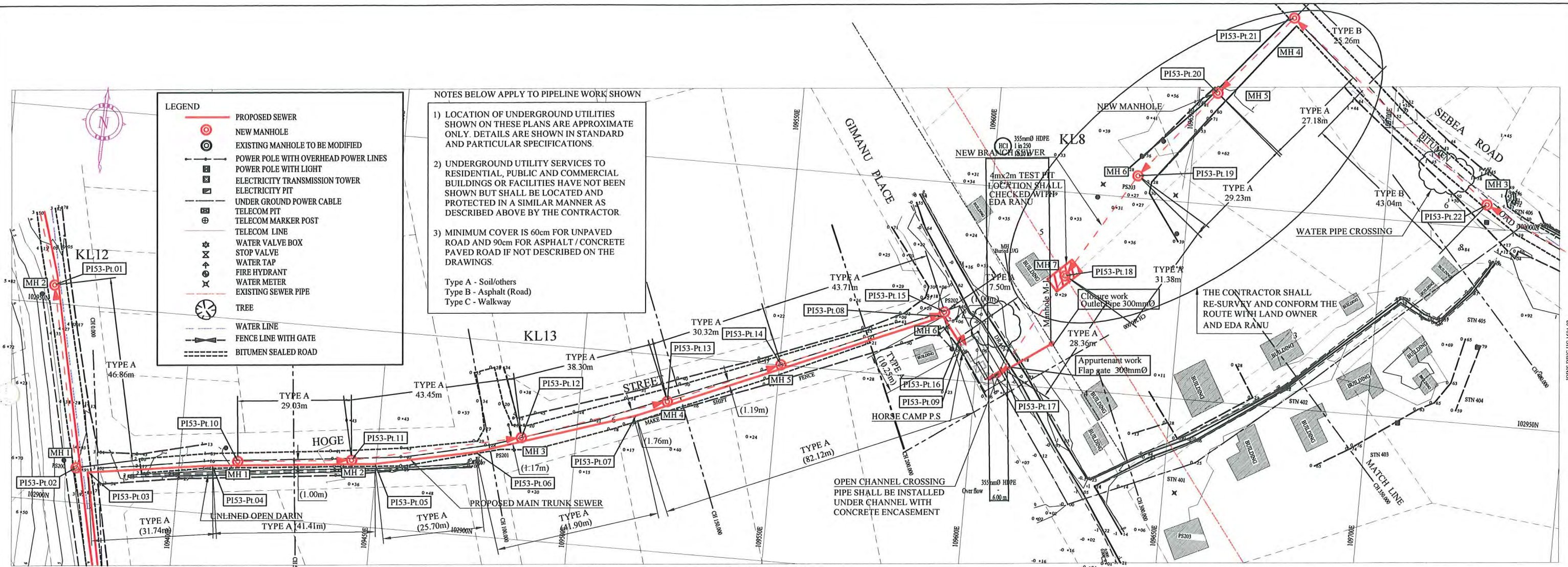
NOTES:

REVISIONS

REV.	DATE	DESCRIPTION

APPROVED by PMU:
 Project Director
 Lot G.Zauya
 CHECKED by CONSULTANT
 Project Manager
 T.Fuji

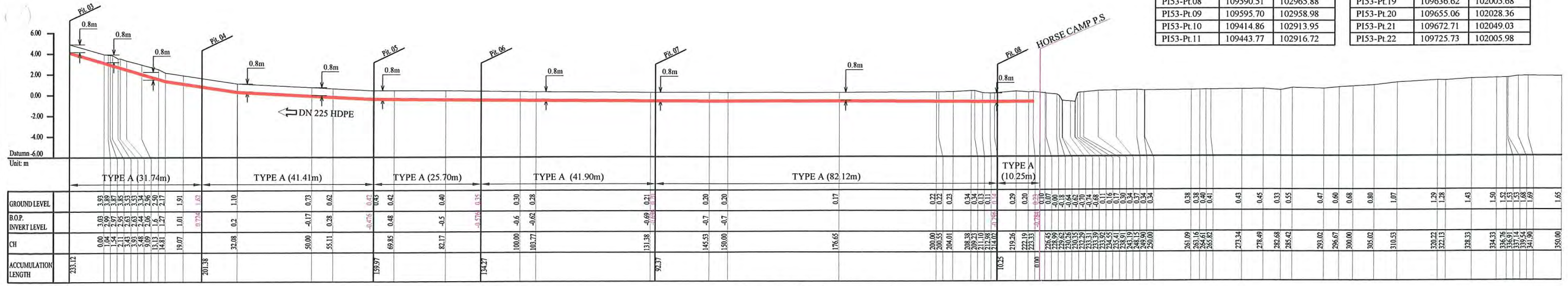
DATE:
1. Dec 2011
 SCALE:
1/1000
 DATE:
1. Dec 2011
 DRAWING NO.:
PI-52



NOTE: CADASTRAL BOUNDARIES TAKEN FROM DCDB

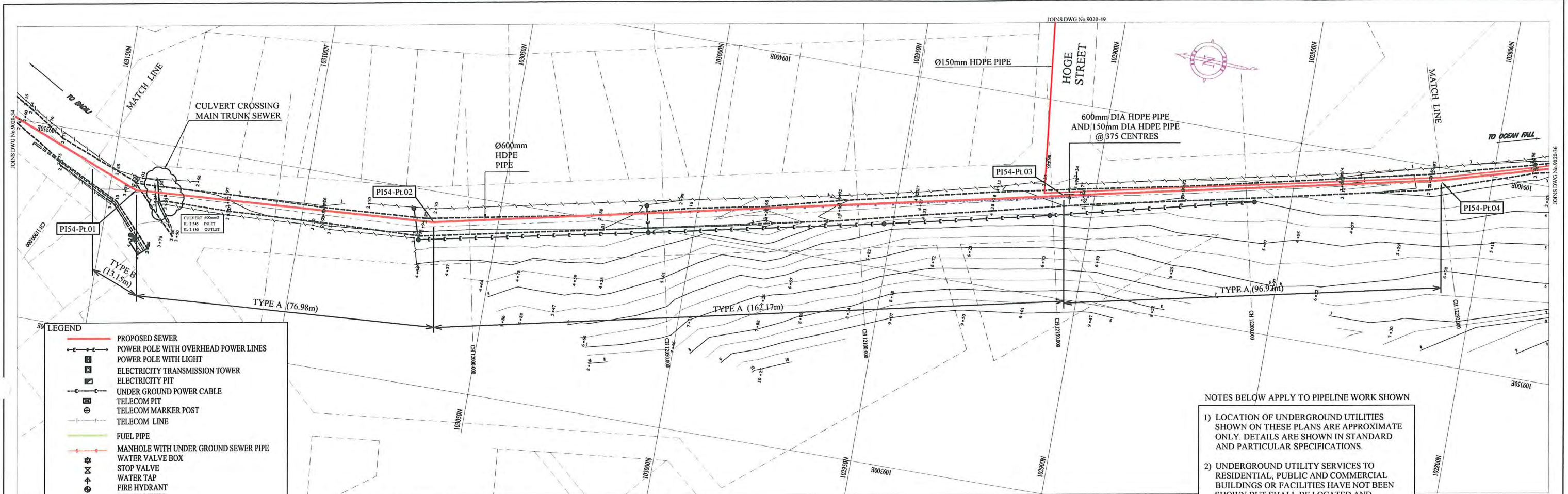
PLAN VIEW
Scale : 1:1000

HDPE PIPE BENDING POINT CORDINATES			HDPE PIPE BENDING POINT CORDINATES		
Corner Pt. No.	EASTING	NORTHING	Corner Pt. No.	EASTING	NORTHING
PI53-Pt.01	109364.42	102954.72	PI53-Pt.12	109486.21	102926.01
PI53-Pt.02	109374.04	102908.86	PI53-Pt.13	109522.45	102938.38
PI53-Pt.03	109377.06	102907.95	PI53-Pt.14	109550.41	102950.12
PI53-Pt.04	109408.40	102912.32	PI53-Pt.15	109590.71	102967.05
PI53-Pt.05	109449.68	102916.29	PI53-Pt.16	109595.46	102961.25
PI53-Pt.06	109474.88	102921.35	PI53-Pt.17	109606.93	102953.84
PI53-Pt.07	109514.80	102934.08	PI53-Pt.18	109620.45	102978.79
PI53-Pt.08	109590.51	102965.88	PI53-Pt.19	109636.62	102905.68
PI53-Pt.09	109595.70	102958.98	PI53-Pt.20	109655.06	102028.36
PI53-Pt.10	109414.86	102913.95	PI53-Pt.21	109672.71	102049.03
PI53-Pt.11	109443.77	102916.72	PI53-Pt.22	109725.73	102005.98



SCALES HOR 1:1000 VER 1:400

PROJECT: PORT MORESBY SEWERAGE SYSTEM UPGRADING PROJECT (POMSSUP)		TITLE: Main Trunk Pipe Plan and Profile (Horse Camp To STP_53/55)																
CLIENT: IPBC INDEPENDENT PUBLIC BUSINESS CORPORATION PORT MORESBY SEWERAGE SYSTEM UPGRADING PROJECT PROJECT MANAGEMENT UNIT (PMU) JICA JAPAN INTERNATIONAL COOPERATION AGENCY	CONSULTANTS: NJS CONSULTANTS CO., LTD. - JAPAN	NOTES:	<table border="1"> <thead> <tr> <th colspan="3">REVISIONS</th> </tr> <tr> <th>REV.</th> <th>DATE</th> <th>DESCRIPTION</th> </tr> </thead> <tbody> <tr><td> </td><td> </td><td> </td></tr> <tr><td> </td><td> </td><td> </td></tr> <tr><td> </td><td> </td><td> </td></tr> </tbody> </table>	REVISIONS			REV.	DATE	DESCRIPTION									
REVISIONS																		
REV.	DATE	DESCRIPTION																
APPROVED by PMU: Project Director Lot G.Zauya		DATE: 1. Dec 2011	SCALE: 1/1000															
CHECKED by CONSULTANT Project Manager T.Fuji		DATE: 1. Dec 2011	DRAWING NO.: PI-53															



LEGEND

- PROPOSED SEWER
- POWER POLE WITH OVERHEAD POWER LINES
- POWER POLE WITH LIGHT
- ELECTRICITY TRANSMISSION TOWER
- ELECTRICITY PIT
- UNDER GROUND POWER CABLE
- TELECOM PIT
- TELECOM MARKER POST
- TELECOM LINE
- FUEL PIPE
- MANHOLE WITH UNDER GROUND SEWER PIPE
- WATER VALVE BOX
- STOP VALVE
- WATER TAP
- FIRE HYDRANT
- WATER METER
- EXISTING SEWER PIPE
- PALM TREE
- TREE
- WATER LINE
- FENCE LINE WITH GATE
- BITUMEN SEALED ROAD

NOTE: CADASTRAL BOUNDARIES TAKEN FROM DCDB

PLAN VIEW
Scale : 1:1000

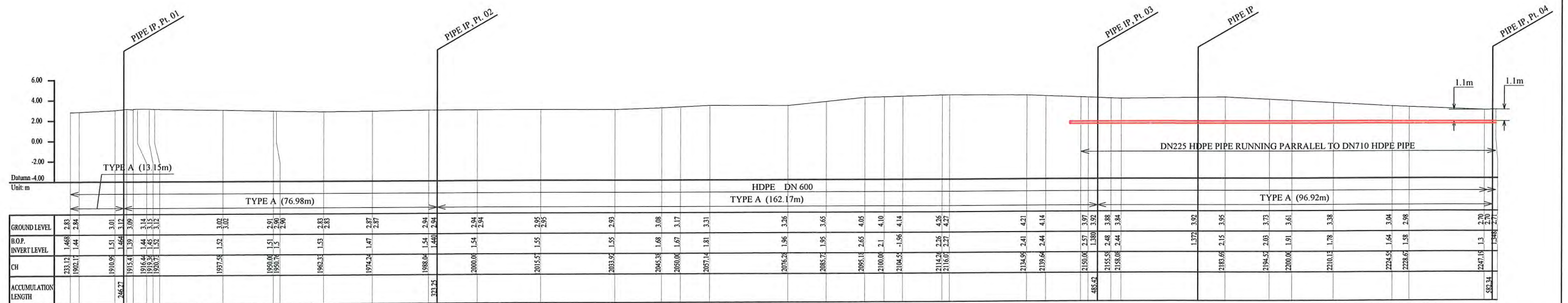
HDPE PIPE BENDING POINT CORDINATES

Corner Pt. No.	EASTING	NORTHING
PI54-Pt.01	109337.26	103143.14
PI54-Pt.02	109342.14	103066.31
PI54-Pt.03	109376.34	102907.79
PI54-Pt.04	109396.81	102813.05

NOTES BELOW APPLY TO PIPELINE WORK SHOWN

- 1) LOCATION OF UNDERGROUND UTILITIES SHOWN ON THESE PLANS ARE APPROXIMATE ONLY. DETAILS ARE SHOWN IN STANDARD AND PARTICULAR SPECIFICATIONS.
- 2) UNDERGROUND UTILITY SERVICES TO RESIDENTIAL, PUBLIC AND COMMERCIAL BUILDINGS OR FACILITIES HAVE NOT BEEN SHOWN BUT SHALL BE LOCATED AND PROTECTED IN A SIMILAR MANNER AS DESCRIBED ABOVE BY THE CONTRACTOR.
- 3) MINIMUM COVER IS 60cm FOR UNPAVED ROAD AND 90cm FOR ASPHALT / CONCRETE PAVED ROAD IF NOT DESCRIBED ON THE DRAWINGS.

Type A - Soil/others
Type B - Asphalt (Road)
Type C - Walkway



SCALES HOR 1:1000 VER 1:400

PROJECT: PORT MORESBY SEWERAGE SYSTEM UPGRADING PROJECT (POMSSUP)		TITLE: Trunk Main Pipe Plan and Profile (Horsecamp to STP_54/55)																			
CLIENT: IPBC INDEPENDENT PUBLIC BUSINESS CORPORATION PORT MORESBY SEWERAGE SYSTEM UPGRADING PROJECT PROJECT MANAGEMENT UNIT (PMU) jica JAPAN INTERNATIONAL COOPERATION AGENCY	CONSULTANTS: NJS CONSULTANTS CO., LTD. - JAPAN	NOTES:	<table border="1" style="width: 100%;"> <thead> <tr> <th colspan="3">REVISIONS</th> </tr> <tr> <th>REV.</th> <th>DATE</th> <th>DESCRIPTION</th> </tr> </thead> <tbody> <tr><td> </td><td> </td><td> </td></tr> <tr><td> </td><td> </td><td> </td></tr> <tr><td> </td><td> </td><td> </td></tr> <tr><td> </td><td> </td><td> </td></tr> </tbody> </table>	REVISIONS			REV.	DATE	DESCRIPTION												
REVISIONS																					
REV.	DATE	DESCRIPTION																			
APPROVED BY PMU: Project Director Lot G.Zauya		DATE: 1. Dec 2011	SCALE: 1/1000																		
CHECKED BY CONSULTANT: Project Manager T.Fuji		DATE: 1. Dec 2011	DRAWING NO.: PI-54																		