

NOTES BELOW APPLY TO PIPELINE WORK SHOWN

- 1) LOCATION OF UNDERGROUND UTILITIES SHOWN ON THESE PLANS ARE APPROXIMATE ONLY. DETAILS ARE SHOWN IN STANDARD AND PARTICULAR SPECIFICATIONS.
- 2) UNDERGROUND UTILITY SERVICES TO RESIDENTIAL, PUBLIC AND COMMERCIAL BUILDINGS OR FACILITIES HAVE NOT BEEN SHOWN BUT SHALL BE LOCATED AND PROTECTED IN A SIMILAR MANNER AS DESCRIBED ABOVE BY THE CONTRACTOR.
- 3) MINIMUM COVER IS 60cm FOR UNPAVED ROAD AND 90cm FOR ASPHALT / CONCRETE PAVED ROAD IF NOT DESCRIBED ON THE DRAWINGS.

Type A - Soil/others
 Type B - Asphalt (Road)
 Type C - Walkway

PLAN VIEW
 Scale : 1:1000

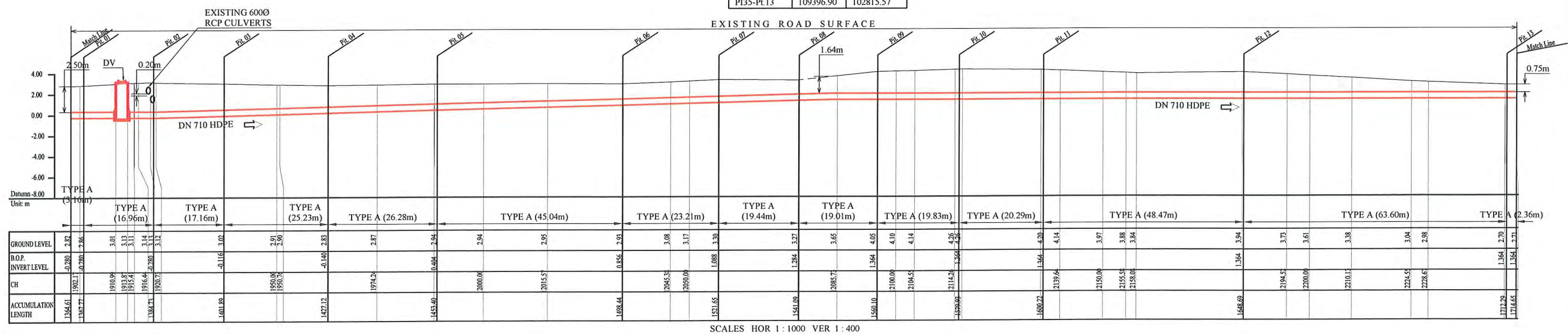
HDPE PIPE BENDING POINT COORDINATES

Corner Pt. No.	EASTING	NORTHING
PI35-Pt.01	109337.81	103153.97
PI35-Pt.02	109338.21	103137.01
PI35-Pt.03	109339.21	103119.88
PI35-Pt.04	109340.11	103094.67
PI35-Pt.05	109341.76	103068.44
PI35-Pt.06	109350.17	103024.19
PI35-Pt.07	109355.85	103001.68
PI35-Pt.08	109359.60	102982.61
PI35-Pt.09	109364.33	102964.26
PI35-Pt.10	109368.76	102944.88
PI35-Pt.11	109373.29	102925.18
PI35-Pt.12	109382.94	102877.64
PI35-Pt.13	109396.90	102815.57

LEGEND

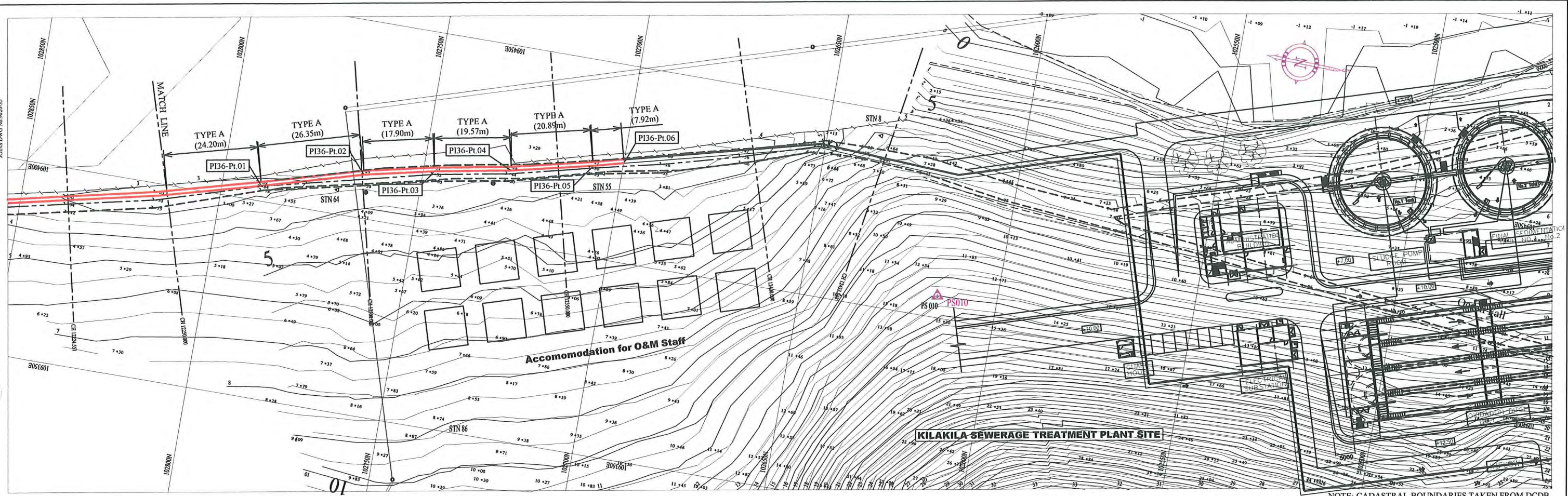
- PROPOSED SEWER
- POWER POLE WITH OVERHEAD POWER LINES
- POWER POLE WITH LIGHT
- ELECTRICITY TRANSMISSION TOWER
- ELECTRICITY PIT
- UNDER GROUND POWER CABLE
- TELECOM PIT
- TELECOM MARKER POST
- TELECOM LINE
- FUEL PIPE
- MANHOLE WITH UNDER GROUND SEWER PIPE
- WATER VALVE BOX
- STOP VALVE
- WATER TAP
- FIRE HYDRANT
- WATER METER
- EXISTING SEWER PIPE
- PALM TREE
- TREE
- WATER LINE
- FENCE LINE WITH GATE
- BITUMEN SEALED ROAD

NOTE: CADASTRAL BOUNDARIES TAKEN FROM DCDB



SCALES HOR 1:1000 VER 1:400

PROJECT: PORT MORESBY SEWERAGE SYSTEM UPGRADING PROJECT (POMSSUP)		TITLE: Trunk Main Pipe Plan and Profile (Siphon No.2_35/53)	
CLIENT: IPBC INDEPENDENT PUBLIC BUSINESS CORPORATION PORT MORESBY SEWERAGE SYSTEM UPGRADING PROJECT PROJECT MANAGEMENT UNIT (PMU)	CONSULTANTS: NJS CONSULTANTS CO., LTD. - JAPAN	NOTES:	APPROVED by PMU: Project Director Lot G.Zauya
JICA JAPAN INTERNATIONAL COOPERATION AGENCY			DATE: 1. Dec 2011
			SCALE: 1/1000
			CHECKED by CONSULTANT Project Manager T.Fuji
			DATE: 1. Dec 2011
			DRAWING NO.: PI-35

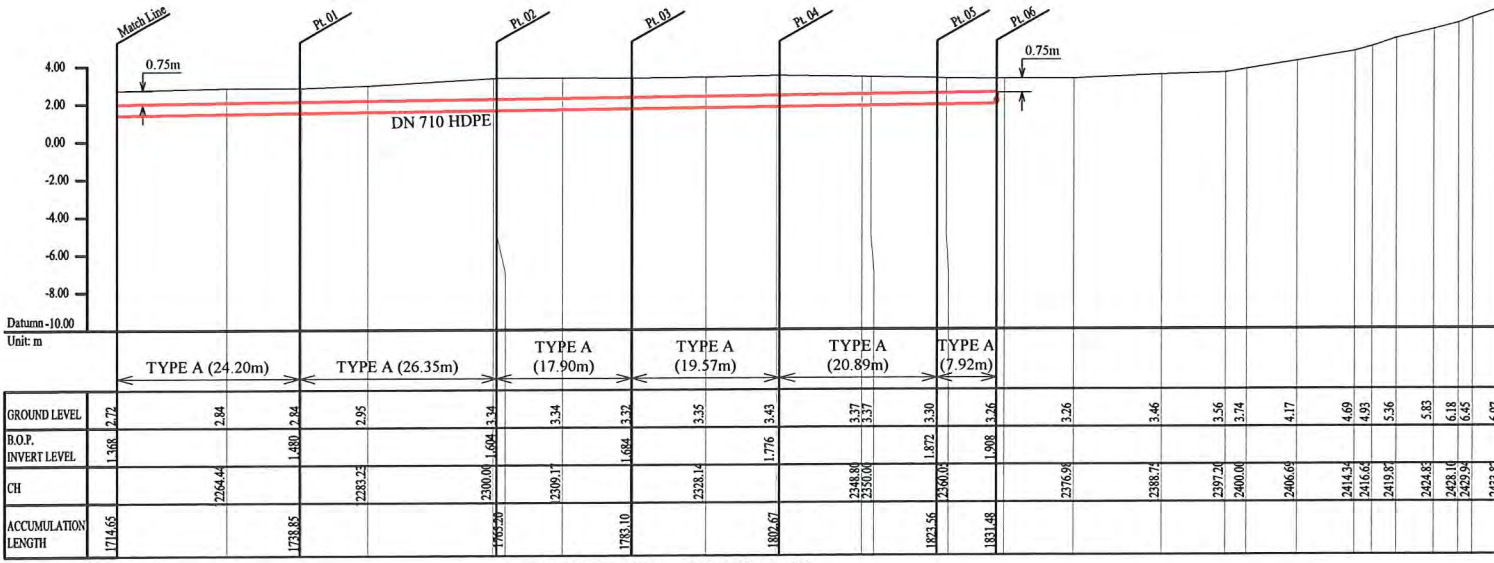


HDPE PIPE BENDING POINT COORDINATES

Corner Pt. No.	EASTING	NORTHING
PI36-Pl.01	109403.85	102789.98
PI36-Pl.02	109411.10	102764.65
PI36-Pl.03	109414.94	102747.16
PI36-Pl.04	109418.42	102727.91
PI36-Pl.05	109423.17	102707.55
PI36-Pl.06	109425.05	102700.00

PLAN VIEW
Scale : 1:1000

NOTE: CADASTRAL BOUNDARIES TAKEN FROM DCDB



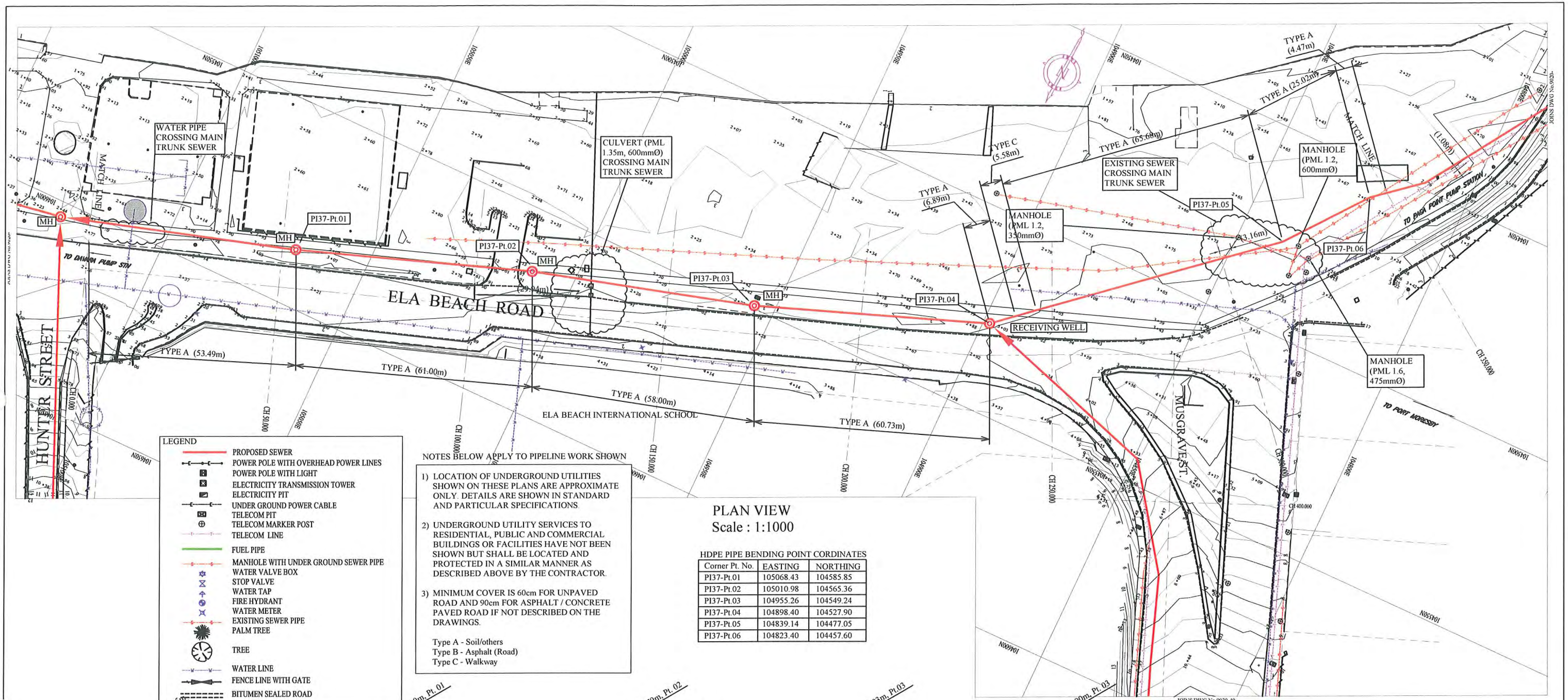
SCALES HOR 1 : 1000 VER 1 : 400

LEGEND

- PROPOSED SEWER
- POWER POLE WITH OVERHEAD POWER LINES
- POWER POLE WITH LIGHT
- ELECTRICITY TRANSMISSION TOWER
- ELECTRICITY PIT
- UNDER GROUND POWER CABLE
- TELECOM PIT
- TELECOM MARKER POST
- TELECOM LINE
- FUEL PIPE
- MANHOLE WITH UNDER GROUND SEWER PIPE
- WATER VALVE BOX
- STOP VALVE
- WATER TAP
- FIRE HYDRANT
- WATER METER
- EXISTING SEWER PIPE
- PALM TREE
- TREE
- WATER LINE
- FENCE LINE WITH GATE
- BITUMEN SEALED ROAD

- NOTES BELOW APPLY TO PIPELINE WORK SHOWN
- 1) LOCATION OF UNDERGROUND UTILITIES SHOWN ON THESE PLANS ARE APPROXIMATE ONLY. DETAILS ARE SHOWN IN STANDARD AND PARTICULAR SPECIFICATIONS.
 - 2) UNDERGROUND UTILITY SERVICES TO RESIDENTIAL, PUBLIC AND COMMERCIAL BUILDINGS OR FACILITIES HAVE NOT BEEN SHOWN BUT SHALL BE LOCATED AND PROTECTED IN A SIMILAR MANNER AS DESCRIBED ABOVE BY THE CONTRACTOR.
 - 3) MINIMUM COVER IS 60cm FOR UNPAVED ROAD AND 90cm FOR ASPHALT / CONCRETE PAVED ROAD IF NOT DESCRIBED ON THE DRAWINGS.
- Type A - Soil/others
Type B - Asphalt (Road)
Type C - Walkway

PROJECT: PORT MORESBY SEWERAGE SYSTEM UPGRADING PROJECT (POMSSUP)		TITLE: Trunk Main Pipe Plan and Profile (Siphon No.2_36/55)													
CLIENT: INDEPENDENT PUBLIC BUSINESS CORPORATION PORT MORESBY SEWERAGE SYSTEM UPGRADING PROJECT PROJECT MANAGEMENT UNIT (PMU) JAPAN INTERNATIONAL COOPERATION AGENCY	CONSULTANTS: NJS CONSULTANTS CO., LTD. - JAPAN	NOTES:	<table border="1"> <thead> <tr> <th>REV.</th> <th>DATE</th> <th>REVISIONS DESCRIPTION</th> </tr> </thead> <tbody> <tr><td> </td><td> </td><td> </td></tr> <tr><td> </td><td> </td><td> </td></tr> <tr><td> </td><td> </td><td> </td></tr> </tbody> </table>	REV.	DATE	REVISIONS DESCRIPTION									
REV.	DATE	REVISIONS DESCRIPTION													
APPROVED by PMU: Project Director Lot G.Zauya		DATE: 1. Dec 2011	SCALE: 1/1000												
CHECKED by CONSULTANT Project Manager T.Fuji		DATE: 1. Dec 2011	DRAWING NO.: PI-36												



LEGEND

- PROPOSED SEWER
- POWER POLE WITH OVERHEAD POWER LINES
- POWER POLE WITH LIGHT
- ELECTRICITY TRANSMISSION TOWER
- ELECTRICITY PIT
- UNDER GROUND POWER CABLE
- TELECOM PIT
- TELECOM MARKER POST
- TELECOM LINE
- FUEL PIPE
- MANHOLE WITH UNDER GROUND SEWER PIPE
- WATER VALVE BOX
- STOP VALVE
- WATER TAP
- FIRE HYDRANT
- WATER METER
- EXISTING SEWER PIPE
- PALM TREE
- TREE
- WATER LINE
- FENCE LINE WITH GATE
- BITUMEN SEALED ROAD

NOTES BELOW APPLY TO PIPELINE WORK SHOWN

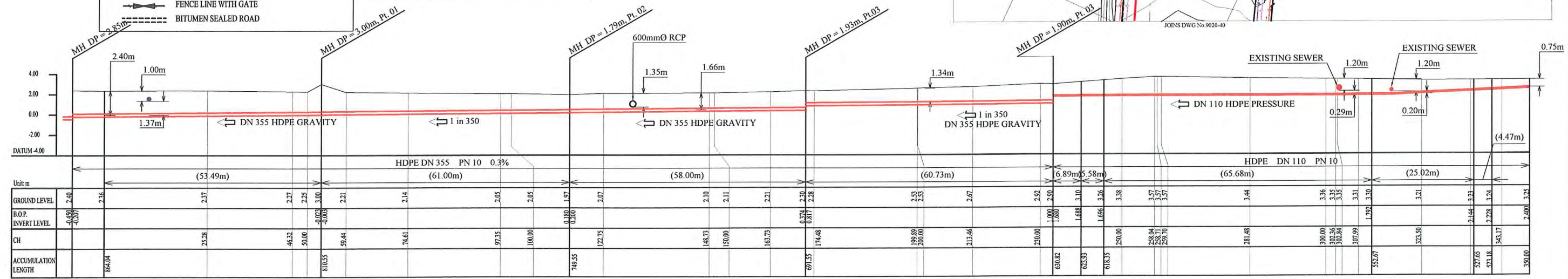
- LOCATION OF UNDERGROUND UTILITIES SHOWN ON THESE PLANS ARE APPROXIMATE ONLY. DETAILS ARE SHOWN IN STANDARD AND PARTICULAR SPECIFICATIONS
- UNDERGROUND UTILITY SERVICES TO RESIDENTIAL, PUBLIC AND COMMERCIAL BUILDINGS OR FACILITIES HAVE NOT BEEN SHOWN BUT SHALL BE LOCATED AND PROTECTED IN A SIMILAR MANNER AS DESCRIBED ABOVE BY THE CONTRACTOR.
- MINIMUM COVER IS 60cm FOR UNPAVED ROAD AND 90cm FOR ASPHALT / CONCRETE PAVED ROAD IF NOT DESCRIBED ON THE DRAWINGS.

Type A - Soil/others
 Type B - Asphalt (Road)
 Type C - Walkway

PLAN VIEW
Scale: 1:1000

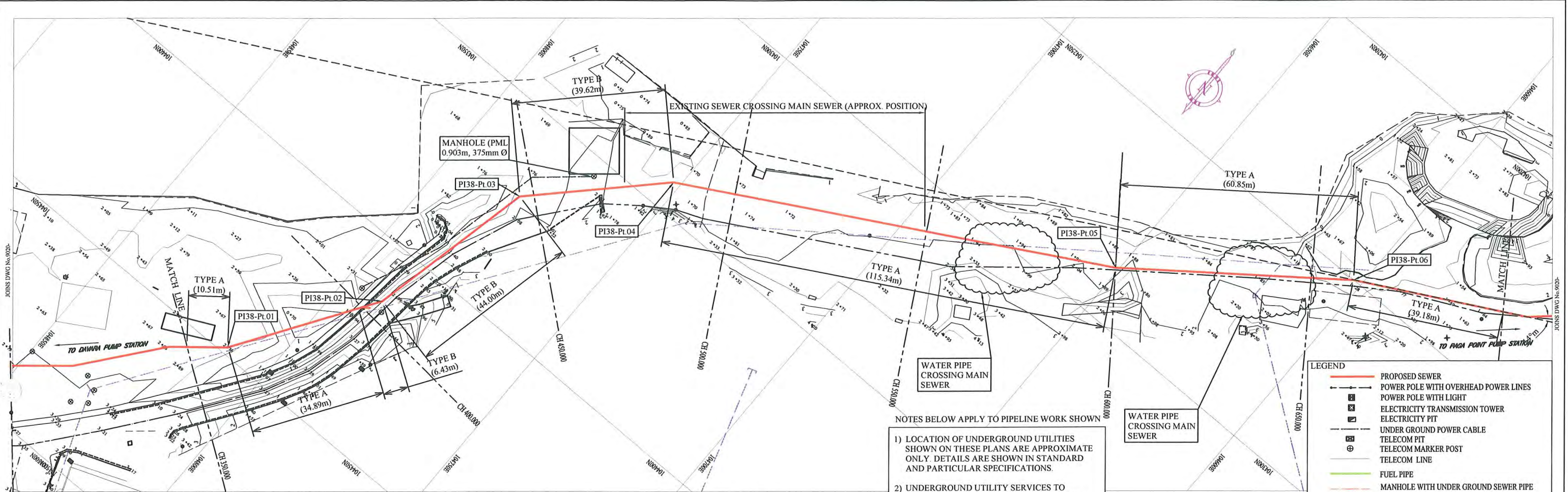
HDPE PIPE BENDING POINT CORDINATES

Corner Pt. No.	EASTING	NORTHING
PI37-Pt.01	105068.43	104585.85
PI37-Pt.02	105010.98	104565.36
PI37-Pt.03	104955.26	104549.24
PI37-Pt.04	104898.40	104527.90
PI37-Pt.05	104839.14	104477.05
PI37-Pt.06	104823.40	104457.60



SCALES HOR 1:1000 VER 1:400

PROJECT: PORT MORESBY SEWERAGE SYSTEM UPGRADING PROJECT (POMSSUP)		TITLE: Trunk Main Pipe Plan and Profile (Sea Park to Davara_37/55)																
CLIENT: IPBC INDEPENDENT PUBLIC BUSINESS CORPORATION PORT MORESBY SEWERAGE SYSTEM UPGRADING PROJECT PROJECT MANAGEMENT UNIT (PMU) jica JAPAN INTERNATIONAL COOPERATION AGENCY	CONSULTANTS: NJS CONSULTANTS CO., LTD. - JAPAN	NOTES:	REVISIONS															
		<table border="1" style="width: 100%; border-collapse: collapse;"> <thead> <tr> <th>REV.</th> <th>DATE</th> <th>DESCRIPTION</th> </tr> </thead> <tbody> <tr><td> </td><td> </td><td> </td></tr> <tr><td> </td><td> </td><td> </td></tr> <tr><td> </td><td> </td><td> </td></tr> <tr><td> </td><td> </td><td> </td></tr> </tbody> </table>		REV.	DATE	DESCRIPTION												
REV.	DATE	DESCRIPTION																
		<table border="1" style="width: 100%; border-collapse: collapse;"> <tr> <td style="width: 50%;">APPROVED BY PMU: Project Director Lot G.Zauya</td> <td style="width: 50%;">DATE: 1. Dec 2011</td> </tr> <tr> <td>CHECKED BY CONSULTANT: Project Manager T.Fuji</td> <td>SCALE: 1/1000</td> </tr> <tr> <td></td> <td>DRAWING NO.: PI-37</td> </tr> </table>		APPROVED BY PMU: Project Director Lot G.Zauya	DATE: 1. Dec 2011	CHECKED BY CONSULTANT: Project Manager T.Fuji	SCALE: 1/1000		DRAWING NO.: PI-37									
APPROVED BY PMU: Project Director Lot G.Zauya	DATE: 1. Dec 2011																	
CHECKED BY CONSULTANT: Project Manager T.Fuji	SCALE: 1/1000																	
	DRAWING NO.: PI-37																	



NOTE: CADASTRAL BOUNDARIES TAKEN FROM DCDB

HDPE PIPE BENDING POINT CORDINATES

Corner Pt. No.	EASTING	NORTHING
PI38-Pt.01	104811.88	104448.15
PI38-Pt.02	104789.15	104413.64
PI38-Pt.03	104779.64	104370.68
PI38-Pt.04	104751.77	104342.52
PI38-Pt.05	104650.86	104286.66
PI38-Pt.06	104602.29	104250.00

PLAN VIEW
Scale: 1:1000

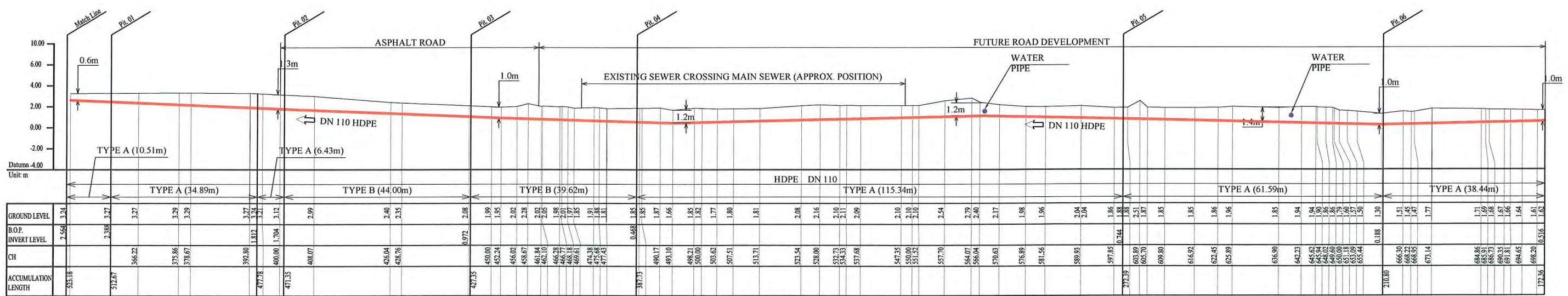
NOTES BELOW APPLY TO PIPELINE WORK SHOWN

- 1) LOCATION OF UNDERGROUND UTILITIES SHOWN ON THESE PLANS ARE APPROXIMATE ONLY. DETAILS ARE SHOWN IN STANDARD AND PARTICULAR SPECIFICATIONS.
- 2) UNDERGROUND UTILITY SERVICES TO RESIDENTIAL, PUBLIC AND COMMERCIAL BUILDINGS OR FACILITIES HAVE NOT BEEN SHOWN BUT SHALL BE LOCATED AND PROTECTED IN A SIMILAR MANNER AS DESCRIBED ABOVE BY THE CONTRACTOR.
- 3) MINIMUM COVER IS 60cm FOR UNPAVED ROAD AND 90cm FOR ASPHALT / CONCRETE PAVED ROAD IF NOT DESCRIBED ON THE DRAWINGS.

Type A - Soil/others
Type B - Asphalt (Road)
Type C - Walkway

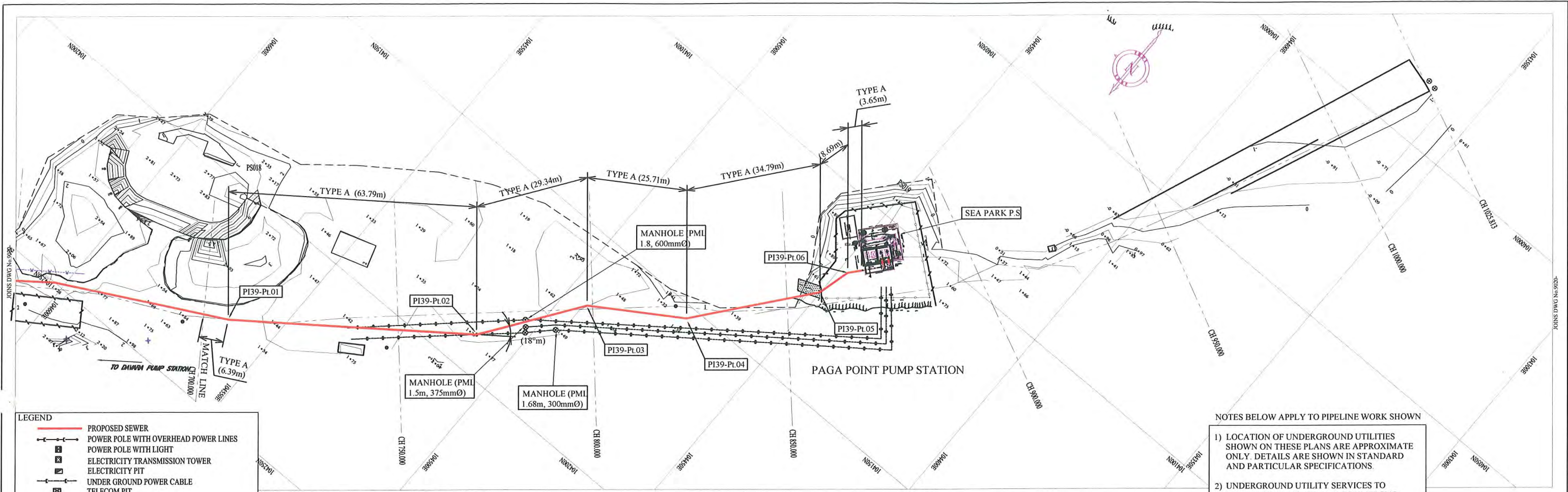
LEGEND

- PROPOSED SEWER
- POWER POLE WITH OVERHEAD POWER LINES
- POWER POLE WITH LIGHT
- ELECTRICITY TRANSMISSION TOWER
- ELECTRICITY PIT
- UNDER GROUND POWER CABLE
- TELECOM PIT
- TELECOM MARKER POST
- TELECOM LINE
- FUEL PIPE
- MANHOLE WITH UNDER GROUND SEWER PIPE
- WATER VALVE BOX
- STOP VALVE
- WATER TAP
- FIRE HYDRANT
- WATER METER
- EXISTING SEWER PIPE
- PALM TREE
- TREE
- WATER LINE
- FENCE LINE WITH GATE
- BITUMEN SEALED ROAD



SCALES HOR 1:1000 VER 1:400

PROJECT: PORT MORESBY SEWERAGE SYSTEM UPGRADING PROJECT (POMSSUP)		TITLE: Trunk Main Pipe Plan and Profile (Sea Park to Davara_38/52)										
CLIENT: INDEPENDENT PUBLIC BUSINESS CORPORATION PORT MORESBY SEWERAGE SYSTEM UPGRADING PROJECT PROJECT MANAGEMENT UNIT (PMU)		CONSULTANTS: NJS CONSULTANTS CO., LTD. - JAPAN										
JICA JAPAN INTERNATIONAL COOPERATION AGENCY		NOTES:										
REVISIONS <table border="1" style="width: 100%;"> <thead> <tr> <th>REV.</th> <th>DATE</th> <th>DESCRIPTION</th> </tr> </thead> <tbody> <tr> <td> </td> <td> </td> <td> </td> </tr> <tr> <td> </td> <td> </td> <td> </td> </tr> </tbody> </table>		REV.	DATE	DESCRIPTION							APPROVED BY PMU: Project Director Lot G.Zaiya	
REV.	DATE	DESCRIPTION										
CHECKED BY CONSULTANT: Project Manager T.Fuji		DATE: 1. Dec 2011 SCALE: 1/1000										
DATE: 1. Dec 2011		DRAWING NO.: PI-38										



LEGEND

- PROPOSED SEWER
- POWER POLE WITH OVERHEAD POWER LINES
- POWER POLE WITH LIGHT
- ELECTRICITY TRANSMISSION TOWER
- ELECTRICITY PIT
- UNDER GROUND POWER CABLE
- TELECOM PIT
- TELECOM MARKER POST
- TELECOM LINE
- FUEL PIPE
- MANHOLE WITH UNDER GROUND SEWER PIPE
- WATER VALVE BOX
- STOP VALVE
- WATER TAP
- FIRE HYDRANT
- WATER METER
- EXISTING SEWER PIPE
- PALM TREE
- TREE
- WATER LINE
- FENCE LINE WITH GATE
- BITUMEN SEALED ROAD

NOTE: CADASTRAL BOUNDARIES TAKEN FROM DCDB

PLAN VIEW
Scale: 1:1000

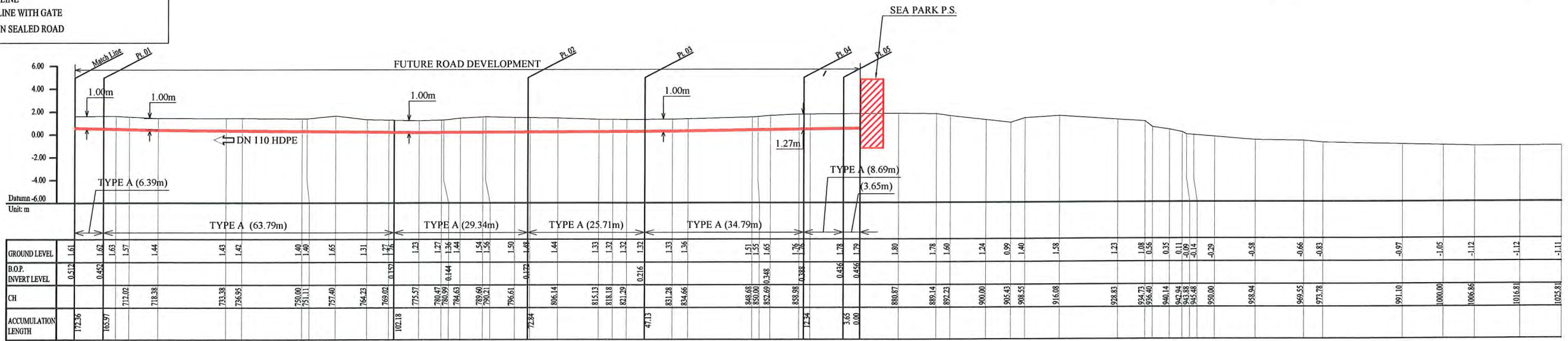
HDPE PIPE BENDING POINT CORDINATES

Corner Pt. No.	EASTING	NORTHING
PI39-Pt.01	104561.96	104228.65
PI39-Pt.02	104510.68	104190.72
PI39-Pt.03	104492.02	104166.54
PI39-Pt.04	104472.09	104152.90
PI39-Pt.05	104450.18	104125.87
PI39-Pt.06	104447.93	104117.47

NOTES BELOW APPLY TO PIPELINE WORK SHOWN

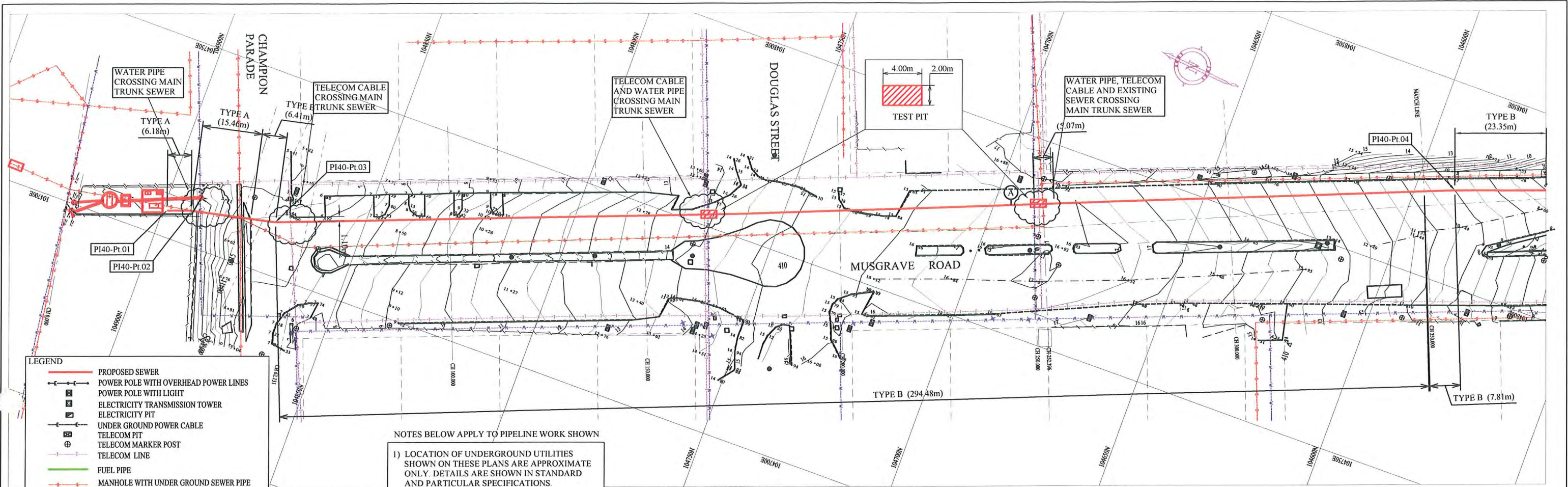
- 1) LOCATION OF UNDERGROUND UTILITIES SHOWN ON THESE PLANS ARE APPROXIMATE ONLY. DETAILS ARE SHOWN IN STANDARD AND PARTICULAR SPECIFICATIONS.
- 2) UNDERGROUND UTILITY SERVICES TO RESIDENTIAL, PUBLIC AND COMMERCIAL BUILDINGS OR FACILITIES HAVE NOT BEEN SHOWN BUT SHALL BE LOCATED AND PROTECTED IN A SIMILAR MANNER AS DESCRIBED ABOVE BY THE CONTRACTOR.
- 3) MINIMUM COVER IS 60cm FOR UNPAVED ROAD AND 90cm FOR ASPHALT / CONCRETE PAVED ROAD IF NOT DESCRIBED ON THE DRAWINGS.

Type A - Soil/others
Type B - Asphalt (Road)
Type C - Walkway



SCALES HOR 1:1000 VER 1:400

PROJECT: PORT MORESBY SEWERAGE SYSTEM UPGRADING PROJECT (POMSSUP)		TITLE: Main Plan and Profile (Sea Park to Davara_39/52)	
CLIENT: INDEPENDENT PUBLIC BUSINESS CORPORATION PORT MORESBY SEWERAGE SYSTEM UPGRADING PROJECT PROJECT MANAGEMENT UNIT (PMU) JICA JAPAN INTERNATIONAL COOPERATION AGENCY	CONSULTANTS: NJS CONSULTANTS CO., LTD. - JAPAN	NOTES:	
		REVISIONS	APPROVED by PMU: Project Director Lot G Zauya
		CHECKED by CONSULTANT: Project Manager T. Fuji	DATE: 1. Dec 2011
			SCALE: 1/1000
			DRAWING NO.: PI-39



LEGEND

- PROPOSED SEWER
- POWER POLE WITH OVERHEAD POWER LINES
- POWER POLE WITH LIGHT
- ELECTRICITY TRANSMISSION TOWER
- ELECTRICITY PIT
- UNDER GROUND POWER CABLE
- TELECOM PIT
- TELECOM MARKER POST
- TELECOM LINE
- FUEL PIPE
- MANHOLE WITH UNDER GROUND SEWER PIPE
- WATER VALVE BOX
- STOP VALVE
- WATER TAP
- FIRE HYDRANT
- WATER METER
- EXISTING SEWER PIPE
- PALM TREE
- TREE
- WATER LINE
- FENCE LINE WITH GATE
- BITUMEN SEALED ROAD

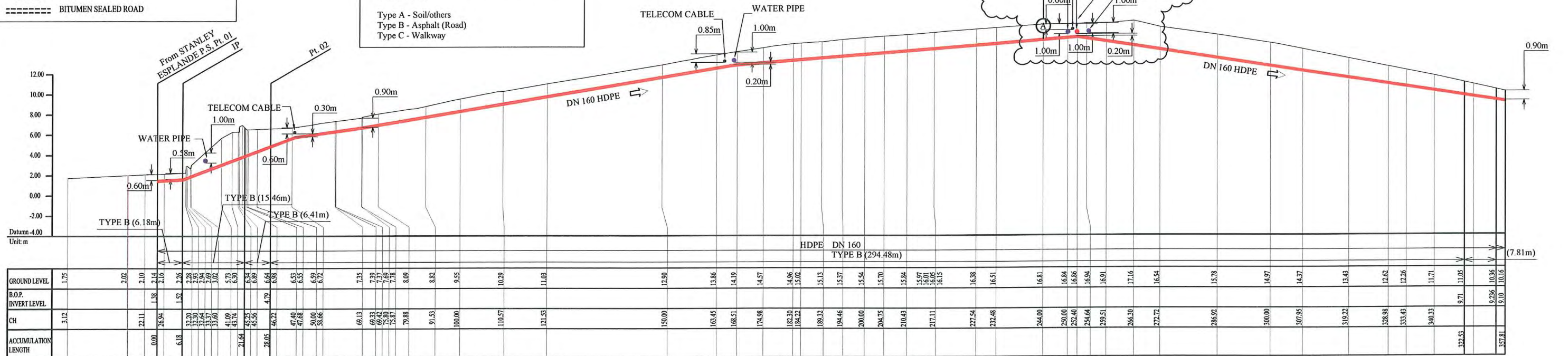
NOTES BELOW APPLY TO PIPELINE WORK SHOWN

- 1) LOCATION OF UNDERGROUND UTILITIES SHOWN ON THESE PLANS ARE APPROXIMATE ONLY. DETAILS ARE SHOWN IN STANDARD AND PARTICULAR SPECIFICATIONS.
 - 2) UNDERGROUND UTILITY SERVICES TO RESIDENTIAL, PUBLIC AND COMMERCIAL BUILDINGS OR FACILITIES HAVE NOT BEEN SHOWN BUT SHALL BE LOCATED AND PROTECTED IN A SIMILAR MANNER AS DESCRIBED ABOVE BY THE CONTRACTOR.
 - 3) MINIMUM COVER IS 60cm FOR UNPAVED ROAD AND 90cm FOR ASPHALT / CONCRETE PAVED ROAD IF NOT DESCRIBED ON THE DRAWINGS.
- Type A - Soil/others
 Type B - Asphalt (Road)
 Type C - Walkway

PLAN VIEW
Scale 1:1000

HDPE PIPE BENDING POINT CORDINATES

Corner Pt. No.	EASTING	NORTHING
PI40-Pt.01	104706.66	104898.97
PI40-Pt.02	104708.73	104893.14
PI40-Pt.03	104713.40	104871.77
PI40-Pt.04	104823.64	104590.30



SCALES HOR 1 : 1000 VER 1 : 400

PROJECT: PORT MORESBY SEWERAGE SYSTEM UPGRADING PROJECT (POMSSUP)		TITLE: Trunk Main Pipe Plan and Profile (Stanley Esplanade to Davara_40/52)																	
CLIENT: INDEPENDENT PUBLIC BUSINESS CORPORATION PORT MORESBY SEWERAGE SYSTEM UPGRADING PROJECT PROJECT MANAGEMENT UNIT (PMU)	CONSULTANTS: NJS CONSULTANTS CO., LTD. - JAPAN	NOTES:	APPROVED by PMU: Project Director Lot G.Zauya CHECKED by CONSULTANT: Project Manager T.Fuji																
		<table border="1"> <thead> <tr> <th>REV.</th> <th>DATE</th> <th>DESCRIPTION</th> </tr> </thead> <tbody> <tr><td> </td><td> </td><td> </td></tr> <tr><td> </td><td> </td><td> </td></tr> <tr><td> </td><td> </td><td> </td></tr> </tbody> </table>	REV.	DATE	DESCRIPTION										<table border="1"> <tr> <td>DATE: 1. Dec 2011</td> <td>SCALE: 1/1000</td> </tr> <tr> <td>DATE: 1. Dec 2011</td> <td>DRAWING NO.: PI-40</td> </tr> </table>	DATE: 1. Dec 2011	SCALE: 1/1000	DATE: 1. Dec 2011	DRAWING NO.: PI-40
REV.	DATE	DESCRIPTION																	
DATE: 1. Dec 2011	SCALE: 1/1000																		
DATE: 1. Dec 2011	DRAWING NO.: PI-40																		