

LEGEND

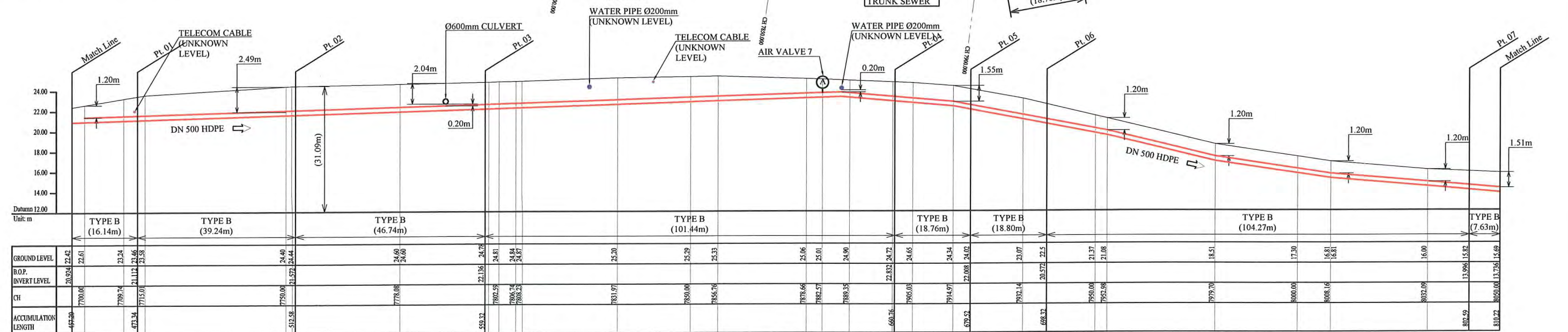
- PROPOSED SEWER
- POWER POLE WITH OVERHEAD POWER LINES
- POWER POLE WITH LIGHT
- ELECTRICITY TRANSMISSION TOWER
- ELECTRICITY PIT
- UNDER GROUND POWER CABLE
- TELECOM PIT
- TELECOM MARKER POST
- TELECOM LINE
- FUEL PIPE
- MANHOLE WITH UNDER GROUND SEWER PIPE
- WATER VALVE BOX
- STOP VALVE
- WATER TAP
- FIRE HYDRANT
- WATER METER
- EXISTING SEWER PIPE
- PALM TREE
- TREE
- WATER LINE
- FENCE LINE WITH GATE
- BITUMEN SEALED ROAD

HDPE PIPE BENDING POINT CORDINATES

Corner Pt. No.	EASTING	NORTHING
PI23-Pt.01	106426.44	104678.88
PI23-Pt.02	106441.86	104642.80
PI23-Pt.03	106471.54	104606.69
PI23-Pt.04	106545.55	104537.30
PI23-Pt.05	106562.48	104529.38
PI23-Pt.06	106581.07	104532.60
PI23-Pt.07	106671.57	104584.40

NOTE: CADASTRAL BOUNDARIES TAKEN FROM DCDB

PLAN VIEW
Scale: 1:1000



SCALES HOR 1:1000 VER 1:400

PROJECT: PORT MORESBY SEWERAGE SYSTEM UPGRADING PROJECT (POMSSUP) TITLE: Trunk Main Pipe Plan and Profile (Lawes Road to Siphon No.1_23/52)

CLIENT: INDEPENDENT PUBLIC BUSINESS CORPORATION
PORT MORESBY SEWERAGE SYSTEM UPGRADING PROJECT
PROJECT MANAGEMENT UNIT (PMU)
jica JAPAN INTERNATIONAL COOPERATION AGENCY

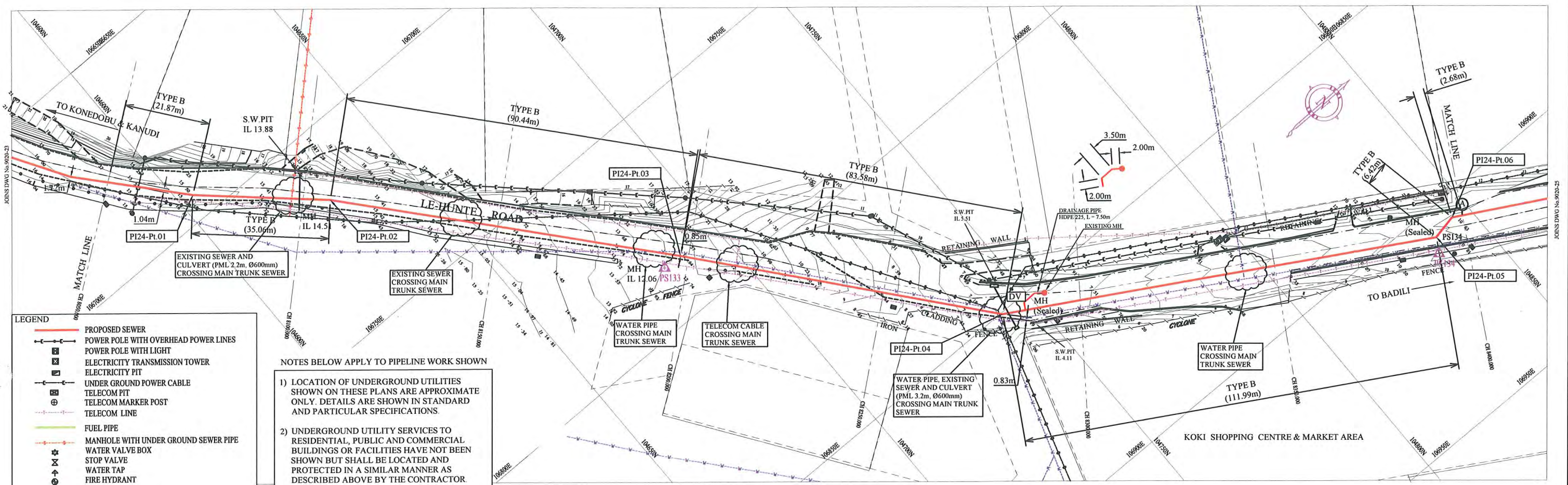
CONSULTANTS: NJS CONSULTANTS CO., LTD. - JAPAN

NOTES:

REVISIONS		
REV.	DATE	DESCRIPTION

APPROVED by PMU: Project Director Lot G.Zauya
CHECKED by CONSULTANT: Project Manager T.Fuji

DATE: 1. Dec 2011 SCALE: 1/1000
DATE: 1. Dec 2011 DRAWING NO.: PI-23



- LEGEND**
- PROPOSED SEWER
 - POWER POLE WITH OVERHEAD POWER LINES
 - POWER POLE WITH LIGHT
 - ELECTRICITY TRANSMISSION TOWER
 - ELECTRICITY PIT
 - UNDER GROUND POWER CABLE
 - TELECOM PIT
 - TELECOM MARKER POST
 - TELECOM LINE
 - FUEL PIPE
 - MANHOLE WITH UNDER GROUND SEWER PIPE
 - WATER VALVE BOX
 - STOP VALVE
 - WATER TAP
 - FIRE HYDRANT
 - WATER METER
 - EXISTING SEWER PIPE
 - PALM TREE
 - TREE
 - WATER LINE
 - FENCE LINE WITH GATE
 - BITUMEN SEALED ROAD

NOTES BELOW APPLY TO PIPELINE WORK SHOWN

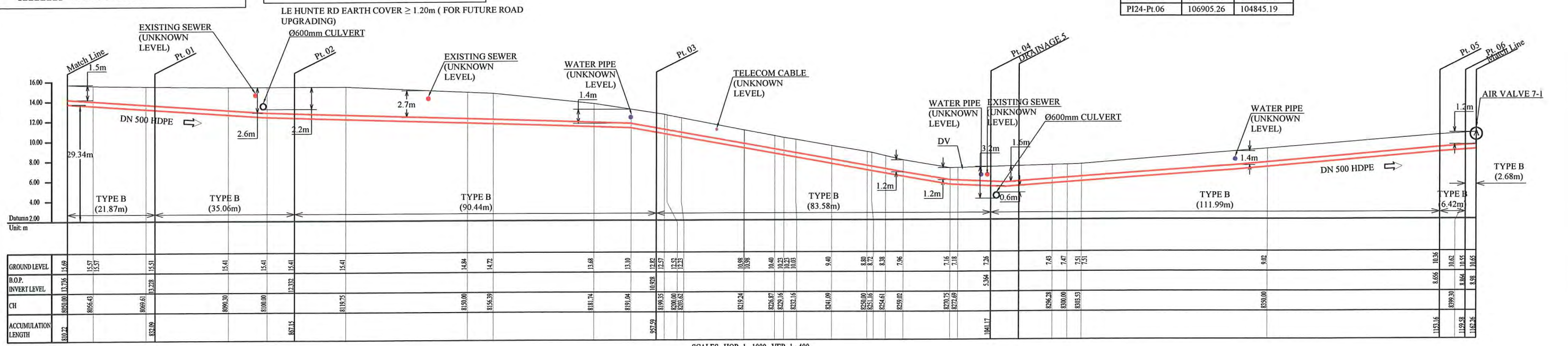
- 1) LOCATION OF UNDERGROUND UTILITIES SHOWN ON THESE PLANS ARE APPROXIMATE ONLY. DETAILS ARE SHOWN IN STANDARD AND PARTICULAR SPECIFICATIONS.
- 2) UNDERGROUND UTILITY SERVICES TO RESIDENTIAL, PUBLIC AND COMMERCIAL BUILDINGS OR FACILITIES HAVE NOT BEEN SHOWN BUT SHALL BE LOCATED AND PROTECTED IN A SIMILAR MANNER AS DESCRIBED ABOVE BY THE CONTRACTOR.
- 3) MINIMUM COVER IS 60cm FOR UNPAVED ROAD AND 90cm FOR ASPHALT / CONCRETE PAVED ROAD IF NOT DESCRIBED ON THE DRAWINGS.

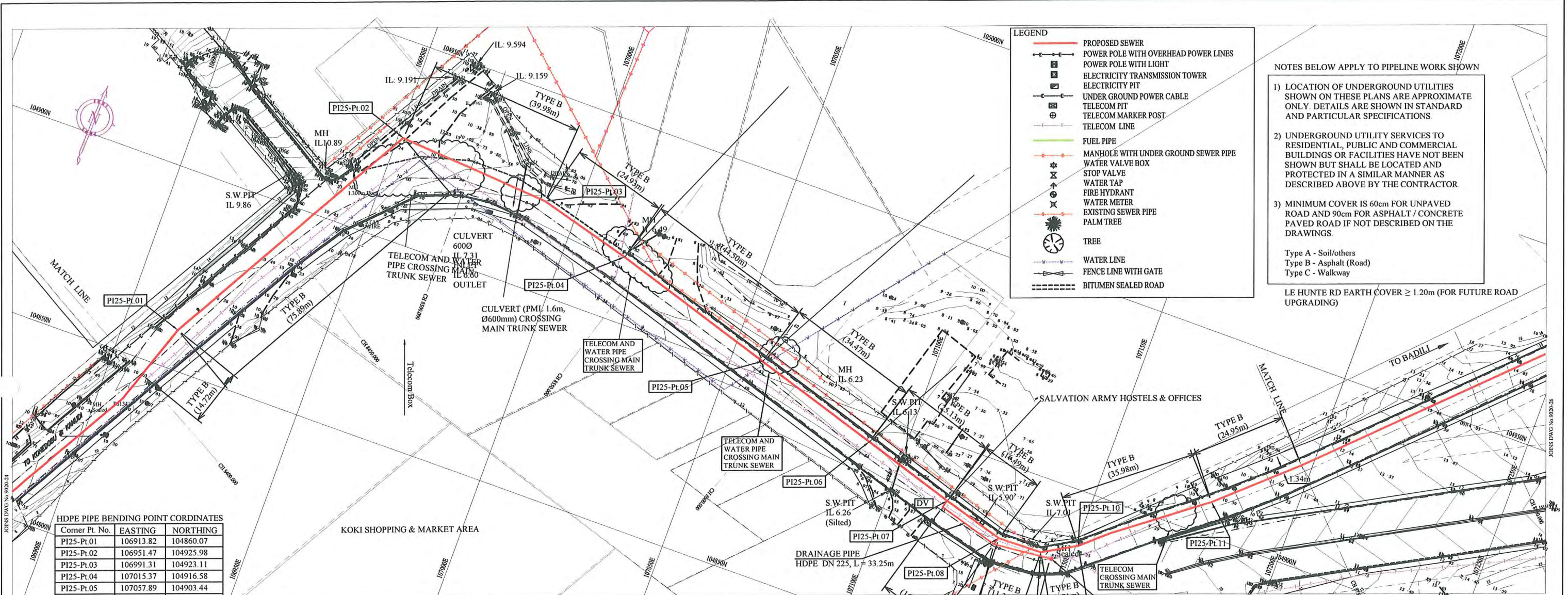
Type A - Soil/others
 Type B - Asphalt (Road)
 Type C - Walkway

PLAN VIEW
 Scale : 1:1000

HDPE PIPE BENDING POINT COORDINATES

Corner Pt. No.	EASTING	NORTHING
PI24-Pt.01	106693.82	104603.87
PI24-Pt.02	106717.41	104629.81
PI24-Pt.03	106786.04	104688.70
PI24-Pt.04	106850.47	104741.94
PI24-Pt.05	106906.25	104838.89
PI24-Pt.06	106905.26	104845.19





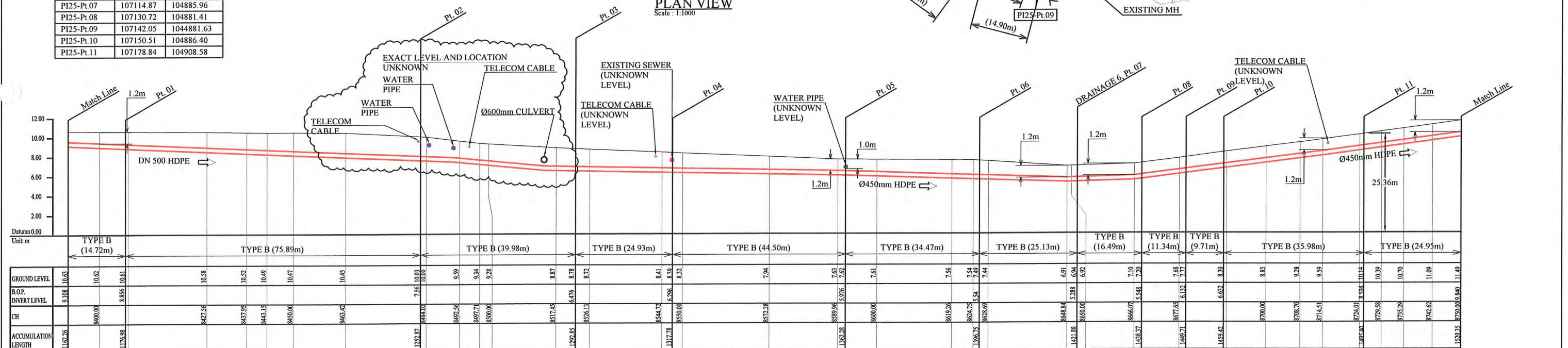
- LEGEND**
- PROPOSED SEWER
 - POWER POLE WITH OVERHEAD POWER LINES
 - ELECTRICITY TRANSMISSION TOWER
 - UNDER GROUND POWER CABLE
 - TELECOM PIT
 - TELECOM MARKER POST
 - TELECOM LINE
 - FUEL PIPE
 - MANHOLE WITH UNDER GROUND SEWER PIPE
 - WATER VALVE BOX
 - STOP VALVE
 - WATER TAP
 - FIRE HYDRANT
 - WATER METER
 - EXISTING SEWER PIPE
 - PALM TREE
 - TREE
 - WATER LINE
 - FENCE LINE WITH GATE
 - BITUMEN SEALED ROAD

- NOTES BELOW APPLY TO PIPELINE WORK SHOWN**
- 1) LOCATION OF UNDERGROUND UTILITIES SHOWN ON THESE PLANS ARE APPROXIMATE ONLY. DETAILS ARE SHOWN IN STANDARD AND PARTICULAR SPECIFICATIONS
 - 2) UNDERGROUND UTILITY SERVICES TO RESIDENTIAL, PUBLIC AND COMMERCIAL BUILDINGS OR FACILITIES HAVE NOT BEEN SHOWN BUT SHALL BE LOCATED AND PROTECTED IN A SIMILAR MANNER AS DESCRIBED ABOVE BY THE CONTRACTOR
 - 3) MINIMUM COVER IS 60cm FOR UNPAVED ROAD AND 90cm FOR ASPHALT / CONCRETE PAVED ROAD IF NOT DESCRIBED ON THE DRAWINGS.
- Type A - Soil/others
 Type B - Asphalt (Road)
 Type C - Walkway
- LE HUNTE RD EARTH COVER ≥ 1.20m (FOR FUTURE ROAD UPGRADING)

HDPE PIPE BENDING POINT CORDINATES

Corner Pt. No.	EASTING	NORTHING
PI25-Pt.01	106913.82	104860.07
PI25-Pt.02	106951.47	104925.98
PI25-Pt.03	106991.31	104923.11
PI25-Pt.04	107015.37	104916.58
PI25-Pt.05	107057.89	104903.44
PI25-Pt.06	107090.87	104893.39
PI25-Pt.07	107114.87	104885.96
PI25-Pt.08	107130.72	104881.41
PI25-Pt.09	107142.05	104881.63
PI25-Pt.10	107150.51	104886.40
PI25-Pt.11	107178.84	104908.58

PLAN VIEW
 Scale : 1:1000



SCALES HOR 1 : 1000 VER 1 : 400

PROJECT: PORT MORESBY SEWERAGE SYSTEM UPGRADING PROJECT (POMSSUP) **TITLE:** Trunk Main Pipe Plan and Profile (Lawes Road to Siphon No.1_25/52)

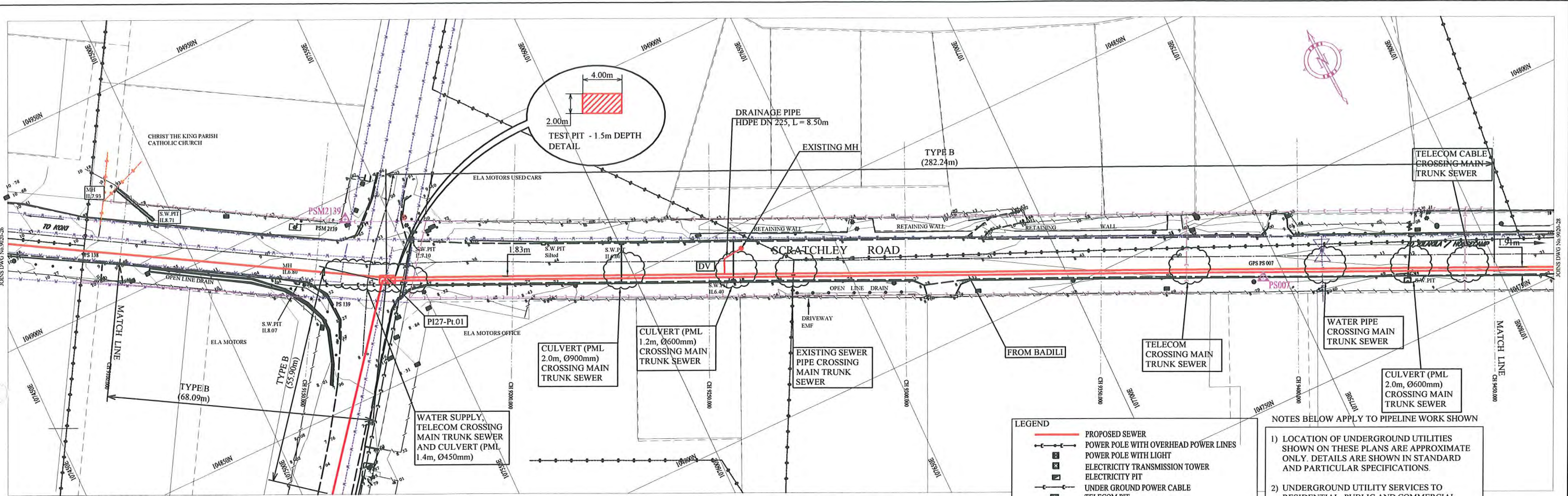
CLIENT: INDEPENDENT PUBLIC BUSINESS CORPORATION
 PORT MORESBY SEWERAGE SYSTEM UPGRADING PROJECT
 PROJECT MANAGEMENT UNIT (PMU)
 JICA JAPAN INTERNATIONAL COOPERATION AGENCY

CONSULTANTS: NJS CONSULTANTS CO., LTD. - JAPAN

NOTES:

REVISIONS			APPROVED BY PMU: Project Director Lot G.Zauya	DATE: 1. Dec 2011	SCALE: 1/1000
REV.	DATE	DESCRIPTION			

CHECKED BY CONSULTANT: Project Manager T.Fuji
 DATE: 1. Dec 2011
 DRAWING NO.: PI-25



NOTE: CADASTRAL BOUNDARIES TAKEN FROM DCDB

PLAN VIEW

Scale : 1:1000

HDPE PIPE BENDING POINT COORDINATES

Corner Pt. No.	EASTING	NORTHING
PI27-Pt.01	107542.70	104876.08

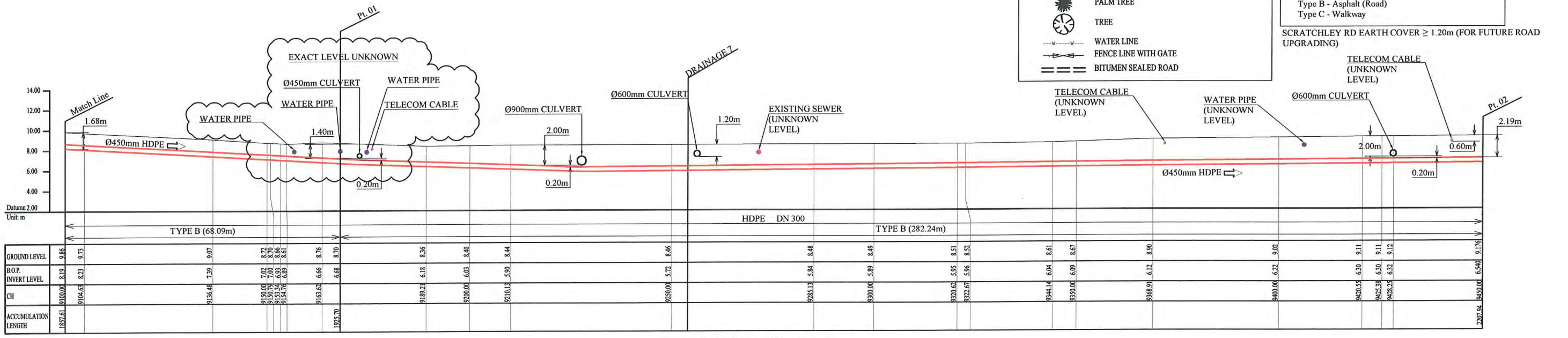
LEGEND

- PROPOSED SEWER
- POWER POLE WITH OVERHEAD POWER LINES
- ELECTRICITY TRANSMISSION TOWER
- UNDER GROUND POWER CABLE
- TELECOM PIT
- TELECOM MARKER POST
- TELECOM LINE
- FUEL PIPE
- MANHOLE WITH UNDER GROUND SEWER PIPE
- WATER VALVE BOX
- STOP VALVE
- WATER TAP
- FIRE HYDRANT
- WATER METER
- EXISTING SEWER PIPE
- PALM TREE
- TREE
- WATER LINE
- FENCE LINE WITH GATE
- BITUMEN SEALED ROAD

NOTES BELOW APPLY TO PIPELINE WORK SHOWN

- 1) LOCATION OF UNDERGROUND UTILITIES SHOWN ON THESE PLANS ARE APPROXIMATE ONLY. DETAILS ARE SHOWN IN STANDARD AND PARTICULAR SPECIFICATIONS.
 - 2) UNDERGROUND UTILITY SERVICES TO RESIDENTIAL, PUBLIC AND COMMERCIAL BUILDINGS OR FACILITIES HAVE NOT BEEN SHOWN BUT SHALL BE LOCATED AND PROTECTED IN A SIMILAR MANNER AS DESCRIBED ABOVE BY THE CONTRACTOR.
 - 3) MINIMUM COVER IS 60cm FOR UNPAVED ROAD AND 90cm FOR ASPHALT / CONCRETE PAVED ROAD IF NOT DESCRIBED ON THE DRAWINGS.
- Type A - Soil/others
 Type B - Asphalt (Road)
 Type C - Walkway

SCRATCHLEY RD EARTH COVER ≥ 1.20m (FOR FUTURE ROAD UPGRADING)



SCALES HOR 1:1000 VER 1:400

PROJECT: **PORT MORESBY SEWERAGE SYSTEM UPGRADING PROJECT (POMSSUP)**

CLIENT: **INDEPENDENT PUBLIC BUSINESS CORPORATION**
PORT MORESBY SEWERAGE SYSTEM UPGRADING PROJECT
PROJECT MANAGEMENT UNIT (PMU)

CONSULTANTS: **NJS CONSULTANTS CO., LTD. - JAPAN**

CLIENT LOGOS: IPBC, JICA, JAPAN INTERNATIONAL COOPERATION AGENCY

TITLE: **Trunk Main Pipe Plan and Profile (Lawes Road to Receiving Well (1)_27/55)**

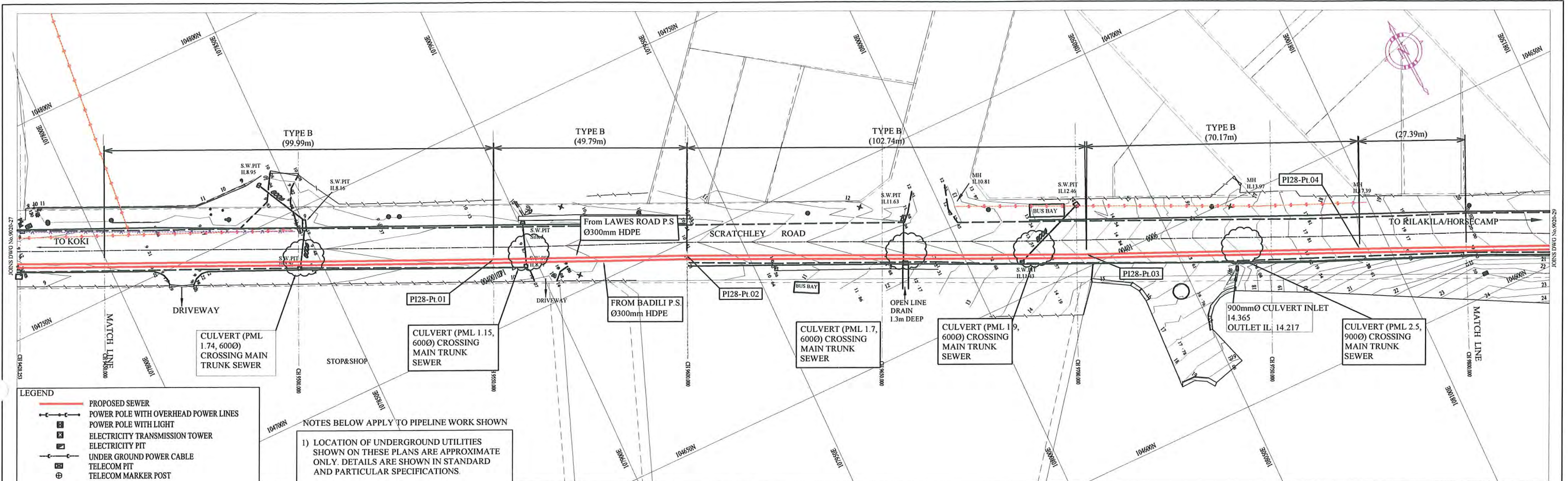
NOTES:

REV.	DATE	REVISIONS DESCRIPTION

APPROVED by PMU:
 Project Director: Lot G.Zauya
 CHECKED by CONSULTANT: Project Manager T.Fuji

DATE: 1. Dec 2011
 DATE: 1. Dec 2011

SCALE: 1/1000
 DRAWING NO.: PI-27



PLAN VIEW
Scale : 1:1000

HDPE PIPE BENDING POINT CORDINATES

Corner Pt. No.	EASTING	NORTHING
PI28-Pt.01	107890.16	104717.92
PI28-Pt.02	107935.66	104696.59
PI28-Pt.03	108028.77	104653.17
PI28-Pt.04	108092.92	104624.75

NOTE: CADASTRAL BOUNDARIES TAKEN FROM DCDB

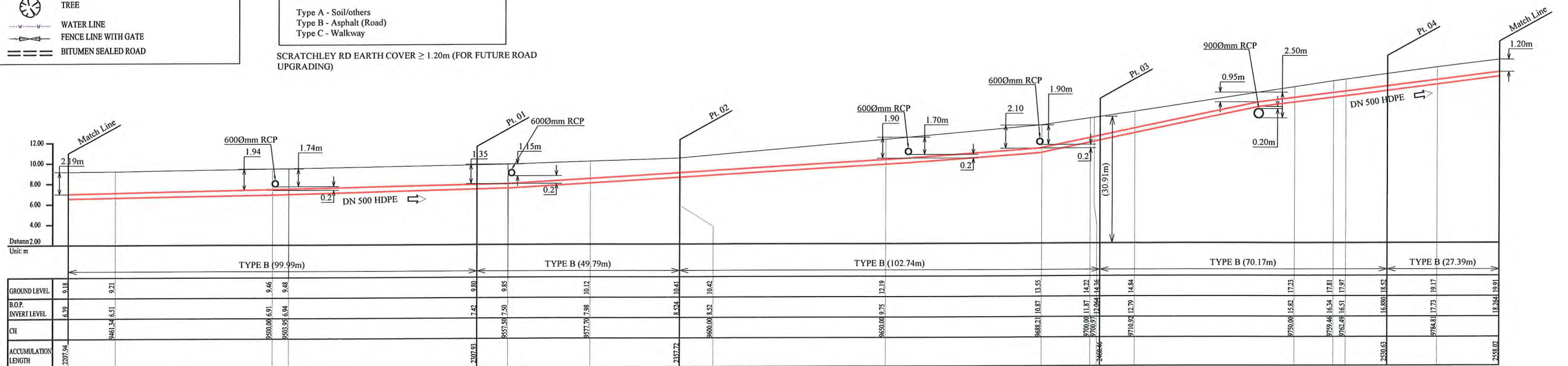
- LEGEND
- PROPOSED SEWER
 - POWER POLE WITH OVERHEAD POWER LINES
 - POWER POLE WITH LIGHT
 - ELECTRICITY TRANSMISSION TOWER
 - ELECTRICITY PIT
 - UNDER GROUND POWER CABLE
 - TELECOM PIT
 - TELECOM MARKER POST
 - TELECOM LINE
 - FUEL PIPE
 - MANHOLE WITH UNDER GROUND SEWER PIPE
 - WATER VALVE BOX
 - STOP VALVE
 - WATER TAP
 - FIRE HYDRANT
 - WATER METER
 - EXISTING SEWER PIPE
 - PALM TREE
 - TREE
 - WATER LINE
 - FENCE LINE WITH GATE
 - BITUMEN SEALED ROAD

NOTES BELOW APPLY TO PIPELINE WORK SHOWN

- 1) LOCATION OF UNDERGROUND UTILITIES SHOWN ON THESE PLANS ARE APPROXIMATE ONLY. DETAILS ARE SHOWN IN STANDARD AND PARTICULAR SPECIFICATIONS.
- 2) UNDERGROUND UTILITY SERVICES TO RESIDENTIAL, PUBLIC AND COMMERCIAL BUILDINGS OR FACILITIES HAVE NOT BEEN SHOWN BUT SHALL BE LOCATED AND PROTECTED IN A SIMILAR MANNER AS DESCRIBED ABOVE BY THE CONTRACTOR.
- 3) MINIMUM COVER IS 60cm FOR UNPAVED ROAD AND 90cm FOR ASPHALT / CONCRETE PAVED ROAD IF NOT DESCRIBED ON THE DRAWINGS.

Type A - Soil/others
Type B - Asphalt (Road)
Type C - Walkway

SCRATCHLEY RD EARTH COVER ≥ 1.20m (FOR FUTURE ROAD UPGRADING)



SCALES HOR 1:1000 VER 1:400

PROJECT: PORT MORESBY SEWERAGE SYSTEM UPGRADING PROJECT (POMSSUP)

TITLE: Trunk Main Pipe Plan and Profile (Lawes Road to Siphon No.1_28/52)

INDEPENDENT PUBLIC BUSINESS CORPORATION
PORT MORESBY SEWERAGE SYSTEM UPGRADING PROJECT
PROJECT MANAGEMENT UNIT (PMU)

JICA
JAPAN INTERNATIONAL COOPERATION AGENCY

CONSULTANTS:

NJS CONSULTANTS CO., LTD. - JAPAN

NOTES:

REVISIONS		
REV.	DATE	DESCRIPTION

APPROVED by PMU:
Project Director
Lot G.Zauya

CHECKED by CONSULTANT
Project Manager
T.Fuji

DATE: 1. Dec 2011

SCALE: 1/1000

DATE: 1. Dec 2011

DRAWING NO.: PI-28