

LEGEND

- PROPOSED SEWER
- POWER POLE WITH OVERHEAD POWER LINES
- POWER POLE WITH LIGHT
- ELECTRICITY TRANSMISSION TOWER
- ELECTRICITY PIT
- UNDER GROUND POWER CABLE
- TELECOM PIT
- TELECOM MARKER POST
- TELECOM LINE
- FUEL PIPE
- MANHOLE WITH UNDER GROUND SEWER PIPE
- WATER VALVE BOX
- STOP VALVE
- WATER TAP
- FIRE HYDRANT
- WATER METER
- EXISTING SEWER PIPE
- PALM TREE
- TREE
- WATER LINE
- FENCE LINE WITH GATE
- BITUMEN SEALED ROAD

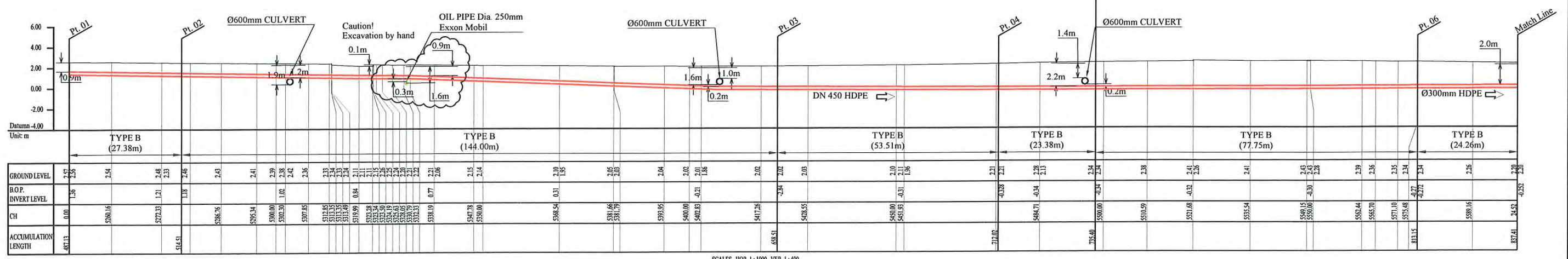
- NOTES BELOW APPLY TO PIPELINE WORK SHOWN**
- 1) LOCATION OF UNDERGROUND UTILITIES SHOWN ON THESE PLANS ARE APPROXIMATE ONLY. DETAILS ARE SHOWN IN STANDARD AND PARTICULAR SPECIFICATIONS.
 - 2) UNDERGROUND UTILITY SERVICES TO RESIDENTIAL, PUBLIC AND COMMERCIAL BUILDINGS OR FACILITIES HAVE NOT BEEN SHOWN BUT SHALL BE LOCATED AND PROTECTED IN A SIMILAR MANNER AS DESCRIBED ABOVE BY THE CONTRACTOR.
 - 3) MINIMUM COVER IS 60cm FOR UNPAVED ROAD AND 90cm FOR ASPHALT / CONCRETE PAVED ROAD IF NOT DESCRIBED ON THE DRAWINGS
- Type A - Soil/others
 Type B - Asphalt (Road)
 Type C - Walkway

PLAN VIEW
 Scale : 1:1000

HDPE PIPE BENDING POINT CORDINATES

Corner Pt. No.	EASTING	NORTHING
PI16-Pt.01	105082.40	105557.19
PI16-Pt.02	105079.52	105530.08
PI16-Pt.03	105073.29	105386.21
PI16-Pt.04	105058.59	105335.22
PI16-Pt.05	105048.35	105313.73
PI16-Pt.06	105008.21	105247.14

NOTE: Cadastral Boundaries taken from DCDB



SCALES HOR 1:1000 VER 1:400

PROJECT: PORT MORESBY SEWERAGE SYSTEM UPGRADING PROJECT (POMSSUP) **TITLE:** Trunk Main Pipe Plan and Profile (Konedobu to Davara _16/55)

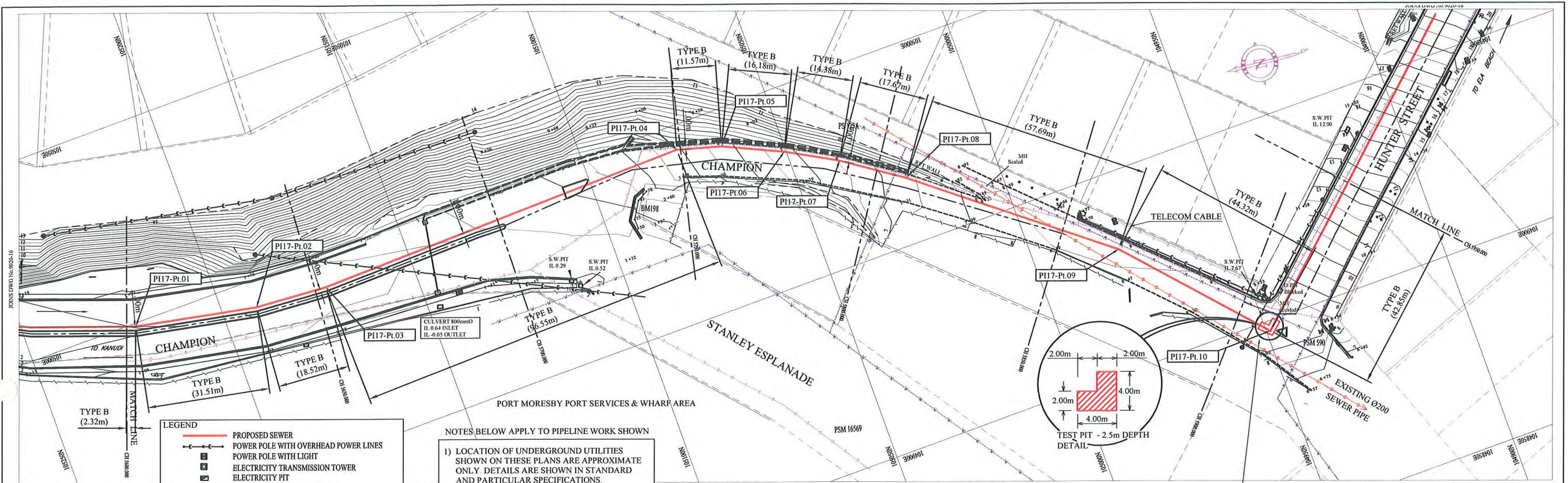
CLIENT: INDEPENDENT PUBLIC BUSINESS CORPORATION
 PORT MORESBY SEWERAGE SYSTEM UPGRADING PROJECT
 PROJECT MANAGEMENT UNIT (PMU)

CONSULTANTS: NJS CONSULTANTS CO., LTD. - JAPAN

NOTES:

REVISIONS			APPROVED BY PMU: Project Director Lot G.Zauya	DATE: 1. Dec 2011	SCALE: 1/1000
REV.	DATE	DESCRIPTION			

CHECKED BY CONSULTANT: Project Manager T.Fuji **DATE:** 1. Dec 2011 **DRAWING NO.:** PI-16



LEGEND

- PROPOSED SEWER
- POWER POLE WITH OVERHEAD POWER LINES
- POWER POLE WITH LIGHT
- ELECTRICITY TRANSMISSION TOWER
- ELECTRICITY PIT
- UNDER GROUND POWER CABLE
- TELECOM PIT
- TELECOM MARKER POST
- TELECOM LINE
- FUEL PIPE
- MANHOLE WITH UNDER GROUND SEWER PIPE
- WATER VALVE BOX
- STOP VALVE
- WATER TAP
- FIRE HYDRANT
- WATER METER
- EXISTING SEWER PIPE
- PALM TREE
- TREE
- WATER LINE
- FENCE LINE WITH GATE
- BITUMEN SEALED ROAD

NOTES BELOW APPLY TO PIPELINE WORK SHOWN

- LOCATION OF UNDERGROUND UTILITIES SHOWN ON THESE PLANS ARE APPROXIMATE ONLY. DETAILS ARE SHOWN IN STANDARD AND PARTICULAR SPECIFICATIONS.
- UNDERGROUND UTILITY SERVICES TO RESIDENTIAL, PUBLIC AND COMMERCIAL BUILDINGS OR FACILITIES HAVE NOT BEEN SHOWN BUT SHALL BE LOCATED AND PROTECTED IN A SIMILAR MANNER AS DESCRIBED ABOVE BY THE CONTRACTOR.
- MINIMUM COVER IS 60cm FOR UNPAVED ROAD AND 90cm FOR ASPHALT / CONCRETE PAVED ROAD IF NOT DESCRIBED ON THE DRAWINGS.

Type A - Soil/others
 Type B - Asphalt (Road)
 Type C - Walkway

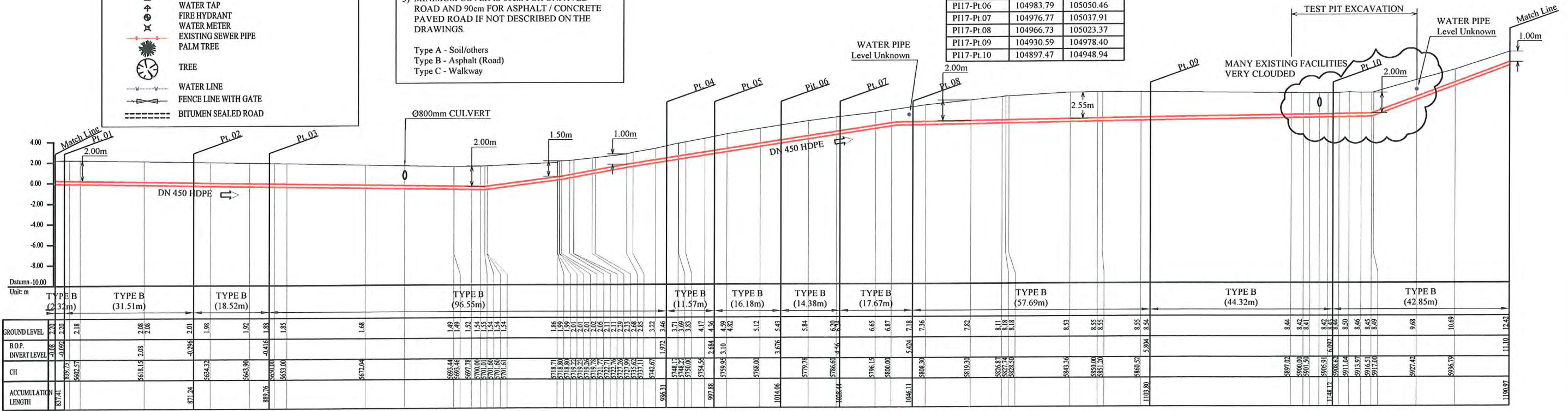
PLAN VIEW
 Scale : 1:1000

HDPE PIPE BENDING POINT COORDINATES

Corner Pt. No.	EASTING	NORTHING
PI17-Pt.01	104999.19	105222.15
PI17-Pt.02	104993.09	105191.24
PI17-Pt.03	104991.77	105172.77
PI17-Pt.04	104993.82	105076.24
PI17-Pt.05	104990.65	105065.12
PI17-Pt.06	104983.79	105050.46
PI17-Pt.07	104976.77	105037.91
PI17-Pt.08	104966.73	105023.37
PI17-Pt.09	104930.59	104978.40
PI17-Pt.10	104897.47	104948.94

TEST EXCAVATION BY HAND

NOTE: Cadastral Boundaries taken from DCDB



SCALES HOR 1:1000 VER 1:400

PROJECT: PORT MORESBY SEWERAGE SYSTEM UPGRADING PROJECT (POMSSUP) **TITLE:** Trunk Main Pipe Plan and Profile (Hanubada to Davara_17/55)

CLIENT: INDEPENDENT PUBLIC BUSINESS CORPORATION
 PORT MORESBY SEWERAGE SYSTEM UPGRADING PROJECT
 PROJECT MANAGEMENT UNIT (PMU)
 JAPAN INTERNATIONAL COOPERATION AGENCY

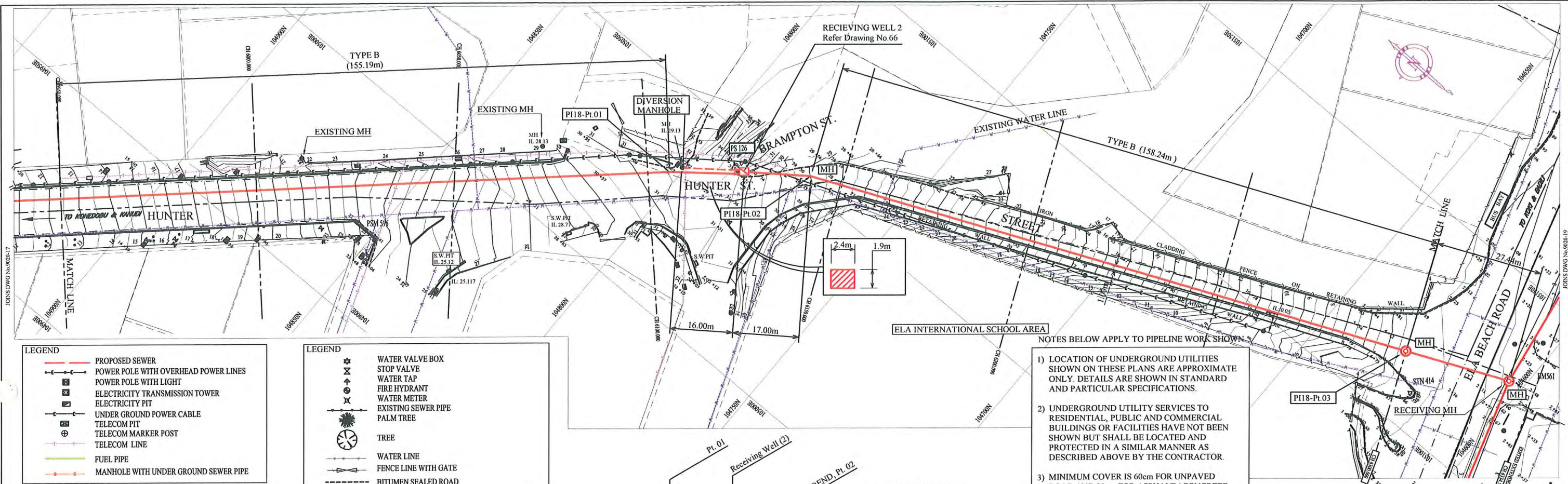
CONSULTANTS: NJS CONSULTANTS CO., LTD. - JAPAN

NOTES:

REVISIONS			APPROVED BY PMU:	DATE:	SCALE:
REV.	DATE	DESCRIPTION			
			Project Director Lot G.Zauya	1. Dec 2011	1/1000

CHECKED BY CONSULTANT: Project Manager T.Fuji

DATE: 1. Dec 2011 DRAWING NO.: PI-17



LEGEND

- PROPOSED SEWER
- POWER POLE WITH OVERHEAD POWER LINES
- POWER POLE WITH LIGHT
- ELECTRICITY TRANSMISSION TOWER
- ELECTRICITY PIT
- UNDER GROUND POWER CABLE
- TELECOM PIT
- TELECOM MARKER POST
- TELECOM LINE
- FUEL PIPE
- MANHOLE WITH UNDER GROUND SEWER PIPE

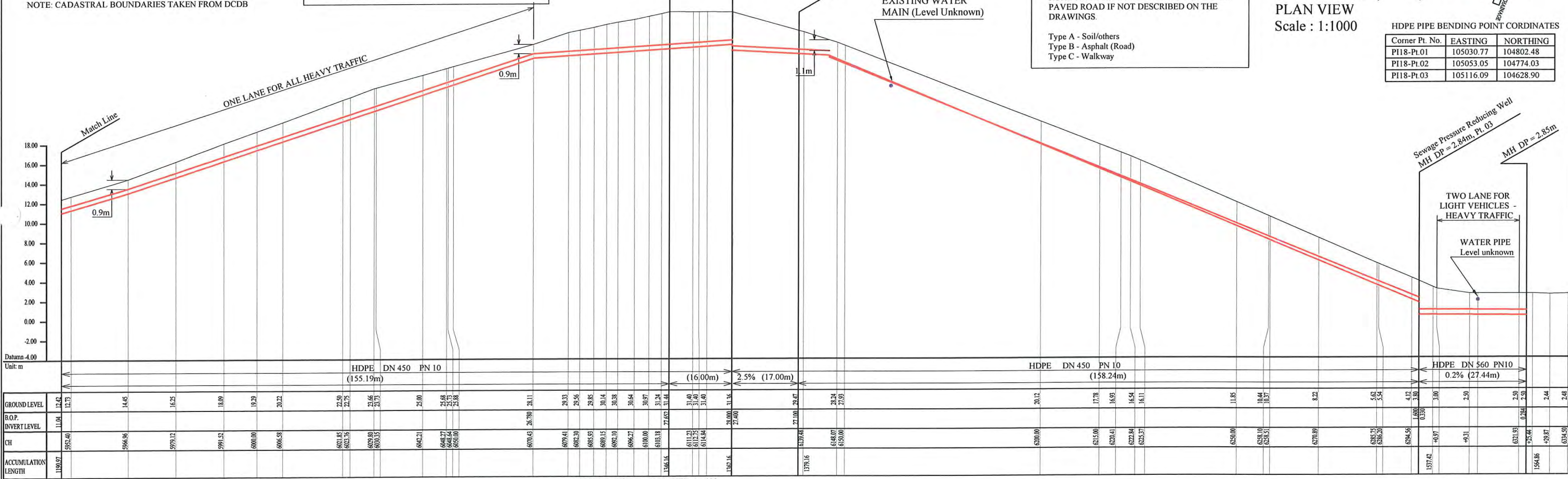
LEGEND

- WATER VALVE BOX
- STOP VALVE
- WATER TAP
- FIRE HYDRANT
- WATER METER
- EXISTING SEWER PIPE
- PALM TREE
- TREE
- WATER LINE
- FENCE LINE WITH GATE
- BITUMEN SEALED ROAD

- NOTES BELOW APPLY TO PIPELINE WORK SHOWN
- 1) LOCATION OF UNDERGROUND UTILITIES SHOWN ON THESE PLANS ARE APPROXIMATE ONLY. DETAILS ARE SHOWN IN STANDARD AND PARTICULAR SPECIFICATIONS.
 - 2) UNDERGROUND UTILITY SERVICES TO RESIDENTIAL, PUBLIC AND COMMERCIAL BUILDINGS OR FACILITIES HAVE NOT BEEN SHOWN BUT SHALL BE LOCATED AND PROTECTED IN A SIMILAR MANNER AS DESCRIBED ABOVE BY THE CONTRACTOR.
 - 3) MINIMUM COVER IS 60cm FOR UNPAVED ROAD AND 90cm FOR ASPHALT / CONCRETE PAVED ROAD IF NOT DESCRIBED ON THE DRAWINGS.
- Type A - Soil/others
Type B - Asphalt (Road)
Type C - Walkway

HDPE PIPE BENDING POINT COORDINATES

Corner Pt. No.	EASTING	NORTHING
PI18-Pl.01	105030.77	104802.48
PI18-Pl.02	105053.05	104774.03
PI18-Pl.03	105116.09	104628.90



Unit: m	Stationing	Ground Level	R.O.P.	Invert Level	CH	Accumulation Length
	1189.7	12.4	12.7	11.04	595.40	1189.7
	5966.96	14.45			5966.96	
	5979.12	16.25			5979.12	
	5991.52	18.09			5991.52	
	6000.00	19.29			6000.00	
	6006.58	20.22			6006.58	
	6011.85	21.50			6011.85	
	6022.56	22.75			6022.56	
	6029.80	23.66			6029.80	
	6035.53	25.73			6035.53	
	6042.21	25.00			6042.21	
	6048.27	25.68			6048.27	
	6048.64	25.73			6048.64	
	6050.00	25.88			6050.00	
	6070.43	26.79	26.11		6070.43	
	6079.41	29.33			6079.41	
	6083.30	29.56			6083.30	
	6085.93	29.85			6085.93	
	6089.15	30.14			6089.15	
	6092.10	30.39			6092.10	
	6096.27	30.64			6096.27	
	6100.00	30.97			6100.00	
	6103.18	31.24			6103.18	
	6111.22	31.48			6111.22	
	6117.44	31.40			6117.44	
	6118.64	31.40			6118.64	
	6120.16	31.96			6120.16	
	6139.16	27.10	26.47		6139.16	
	6148.07	28.24			6148.07	
	6150.00	27.93			6150.00	
	6200.00	20.12			6200.00	
	6215.00	17.78			6215.00	
	6228.41	16.93			6228.41	
	6229.84	16.54			6229.84	
	6232.37	16.11			6232.37	
	6250.00	11.85			6250.00	
	6258.10	10.44			6258.10	
	6263.51	10.37			6263.51	
	6270.89	8.22			6270.89	
	6285.72	5.62			6285.72	
	6286.30	5.54			6286.30	
	6296.56	4.12			6296.56	
	6300.00	3.90			6300.00	
	6301.93	2.50			6301.93	
	6303.84	2.44			6303.84	
	6304.90	2.48			6304.90	

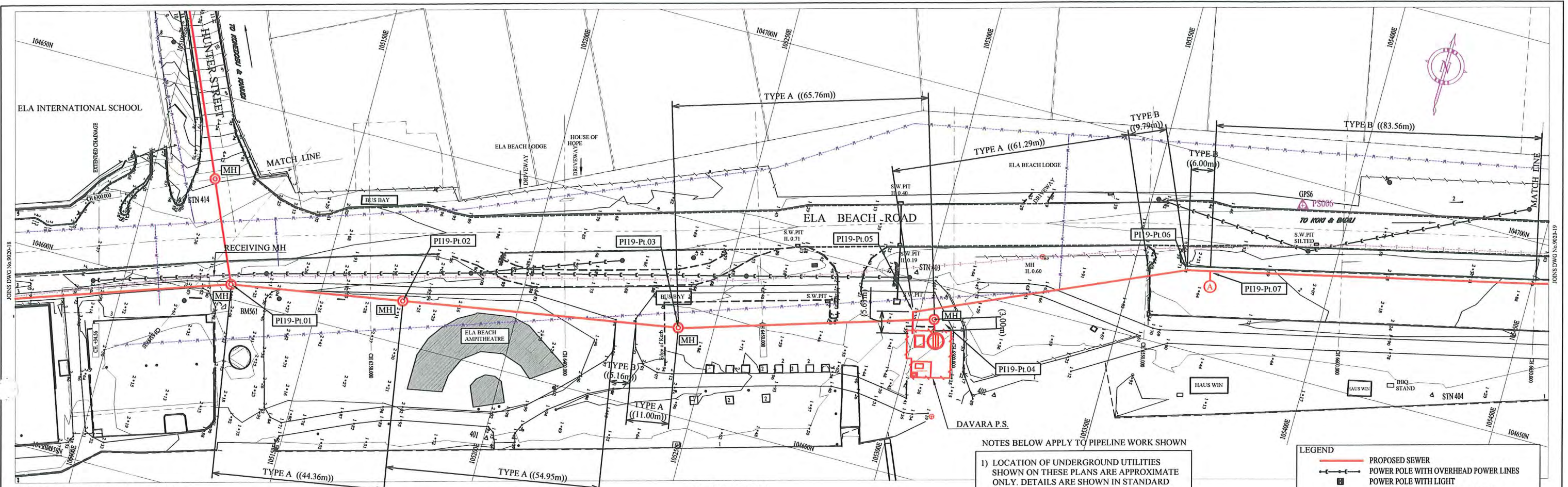
SCALES HOR 1:1000 VER 1:400

PROJECT: PORT MORESBY SEWERAGE SYSTEM UPGRADING PROJECT (POMSSUP) **TITLE:** Trunk Main Pipe Plan and Profile (Konedobu to Davara_18/55)

CLIENT: INDEPENDENT PUBLIC BUSINESS CORPORATION, PORT MORESBY SEWERAGE SYSTEM UPGRADING PROJECT, PROJECT MANAGEMENT UNIT (PMU) **CONSULTANTS:** NJS CONSULTANTS CO., LTD. - JAPAN

NOTES:

REVISIONS			APPROVED by PMU: Project Director Lot G.Zauya	DATE: 1, Dec 2011	SCALE: 1/1000
REV.	DATE	DESCRIPTION			
			CHECKED by CONSULTANT Project Manager T.Fuji	DATE: 1, Dec 2011	DRAWING NO.: PI-18



NOTE: Cadastral Boundaries taken from DCDB

HDPE PIPE BENDING POINT COORDINATES

Corner Pt. No.	EASTING	NORTHING
PI19-Pt.01	105127.10	104603.77
PI19-Pt.02	105170.88	104610.88
PI19-Pt.03	105241.07	104622.32
PI19-Pt.04	105304.06	104641.21
PI19-Pt.05	105298.33	104641.67
PI19-Pt.06	105363.53	104669.97
PI19-Pt.07	105369.38	104671.29

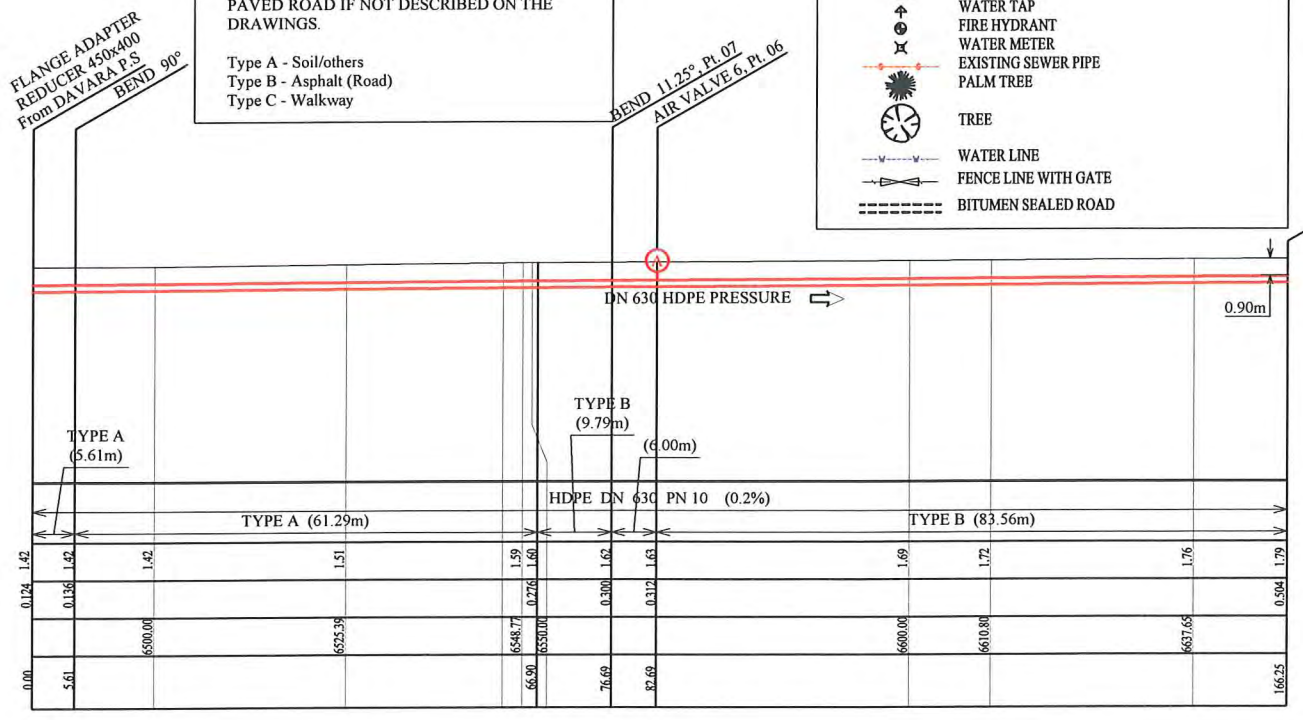
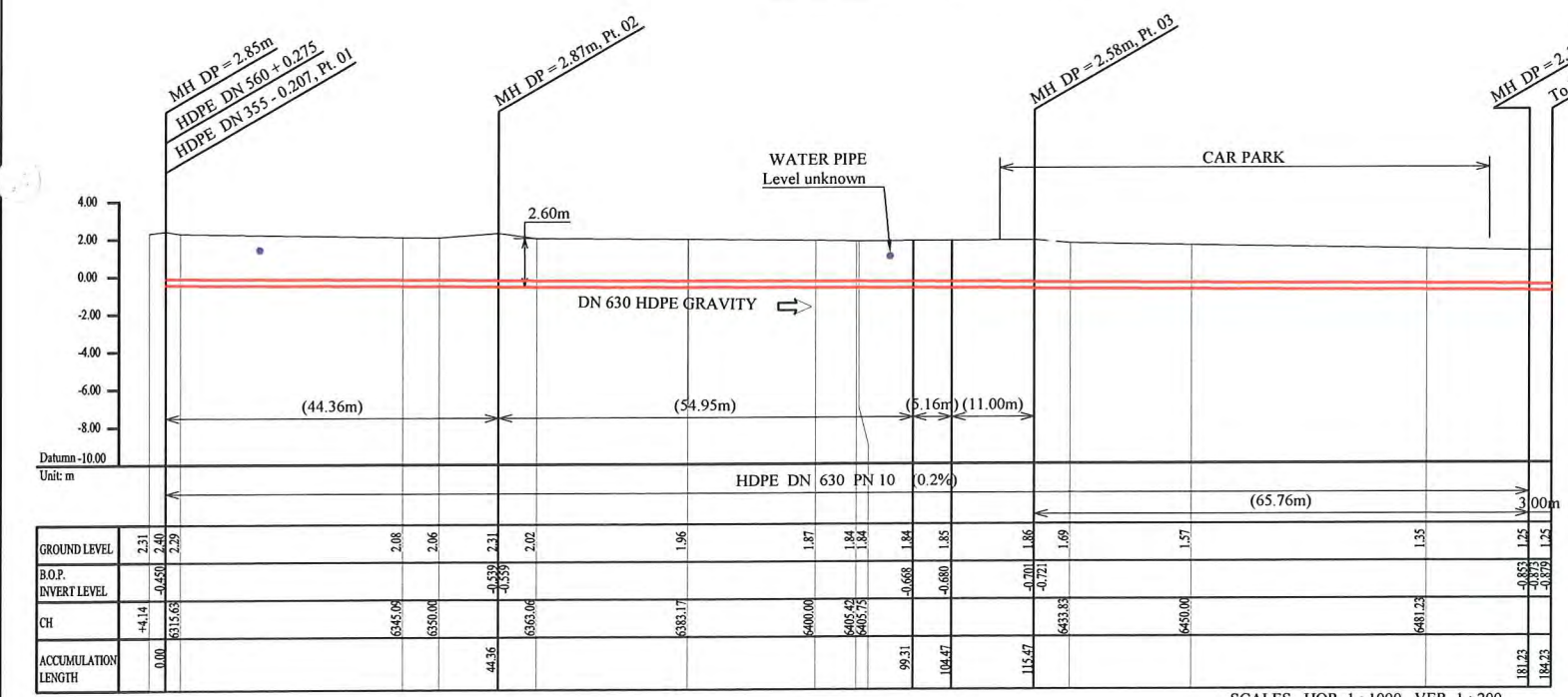
PLAN VIEW
Scale : 1:1000

NOTES BELOW APPLY TO PIPELINE WORK SHOWN

- 1) LOCATION OF UNDERGROUND UTILITIES SHOWN ON THESE PLANS ARE APPROXIMATE ONLY. DETAILS ARE SHOWN IN STANDARD AND PARTICULAR SPECIFICATIONS.
 - 2) UNDERGROUND UTILITY SERVICES TO RESIDENTIAL, PUBLIC AND COMMERCIAL BUILDINGS OR FACILITIES HAVE NOT BEEN SHOWN BUT SHALL BE LOCATED AND PROTECTED IN A SIMILAR MANNER AS DESCRIBED ABOVE BY THE CONTRACTOR.
 - 3) MINIMUM COVER IS 60cm FOR UNPAVED ROAD AND 90cm FOR ASPHALT / CONCRETE PAVED ROAD IF NOT DESCRIBED ON THE DRAWINGS.
- Type A - Soil/others
Type B - Asphalt (Road)
Type C - Walkway

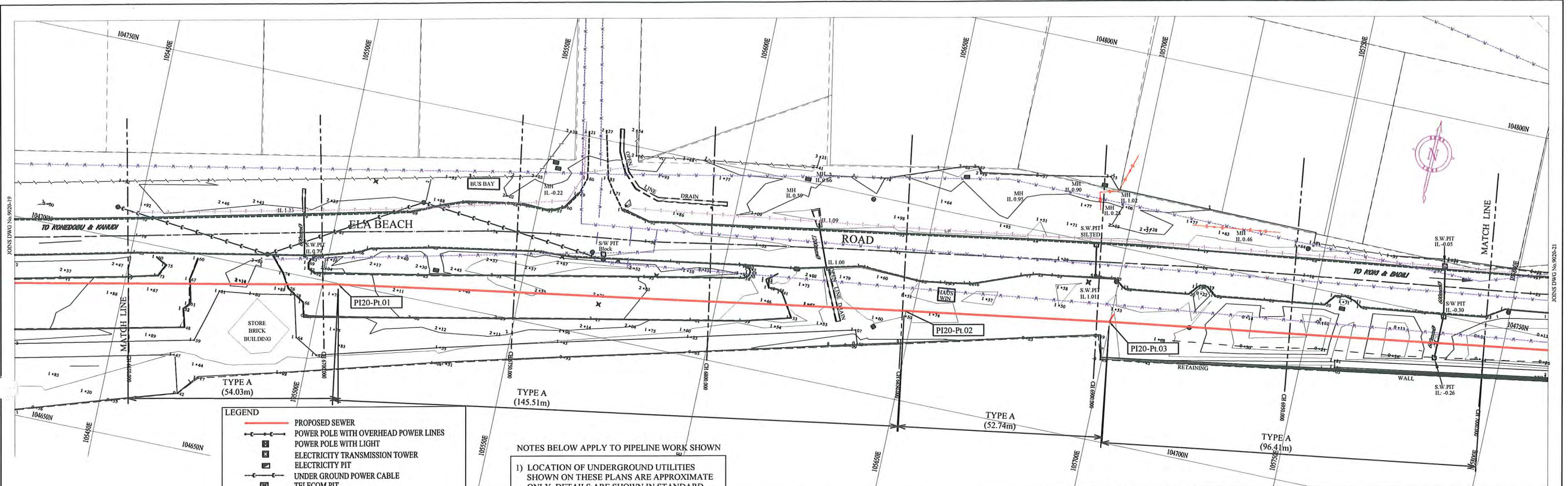
LEGEND

- PROPOSED SEWER
- POWER POLE WITH OVERHEAD POWER LINES
- POWER POLE WITH LIGHT
- ELECTRICITY TRANSMISSION TOWER
- ELECTRICITY PIT
- UNDER GROUND POWER CABLE
- TELECOM PIT
- TELECOM MARKER POST
- TELECOM LINE
- FUEL PIPE
- MANHOLE WITH UNDER GROUND SEWER PIPE
- WATER VALVE BOX
- STOP VALVE
- WATER TAP
- FIRE HYDRANT
- WATER METER
- EXISTING SEWER PIPE
- PALM TREE
- TREE
- WATER LINE
- FENCE LINE WITH GATE
- BITUMEN SEALED ROAD



SCALES HOR 1 : 1000 VER 1 : 200

PROJECT: PORT MORESBY SEWERAGE SYSTEM UPGRADING PROJECT (POMSSUP)		TITLE: Trunk Main Pipe Plan and Profile (Konedobu to Davara_19/55)	
CLIENT: INDEPENDENT PUBLIC BUSINESS CORPORATION PORT MORESBY SEWERAGE SYSTEM UPGRADING PROJECT PROJECT MANAGEMENT UNIT (PMU)	CONSULTANTS: NJS CONSULTANTS CO., LTD. - JAPAN	NOTES:	APPROVED by PMU: Project Director Lot G.Zauya
JAPAN INTERNATIONAL COOPERATION AGENCY			CHECKED by CONSULTANT Project Manager T.Fuji
			DATE: 1. Dec 2011
			SCALE: 1/1000
			DATE: 1. Dec 2011
			DRAWING NO.: PI-19



LEGEND

- PROPOSED SEWER
- POWER POLE WITH OVERHEAD POWER LINES
- POWER POLE WITH LIGHT
- ELECTRICITY TRANSMISSION TOWER
- ELECTRICITY PIT
- UNDER GROUND POWER CABLE
- TELECOM PIT
- TELECOM MARKER POST
- TELECOM LINE
- FUEL PIPE
- MANHOLE WITH UNDER GROUND SEWER PIPE
- WATER VALVE BOX
- STOP VALVE
- WATER TAP
- FIRE HYDRANT
- WATER METER
- EXISTING SEWER PIPE
- PALM TREE
- TREE
- WATER LINE
- FENCE LINE WITH GATE
- BITUMEN SEALED ROAD

NOTES BELOW APPLY TO PIPELINE WORK SHOWN

- 1) LOCATION OF UNDERGROUND UTILITIES SHOWN ON THESE PLANS ARE APPROXIMATE ONLY. DETAILS ARE SHOWN IN STANDARD AND PARTICULAR SPECIFICATIONS.
- 2) UNDERGROUND UTILITY SERVICES TO RESIDENTIAL, PUBLIC AND COMMERCIAL BUILDINGS OR FACILITIES HAVE NOT BEEN SHOWN BUT SHALL BE LOCATED AND PROTECTED IN A SIMILAR MANNER AS DESCRIBED ABOVE BY THE CONTRACTOR
- 3) MINIMUM COVER IS 60cm FOR UNPAVED ROAD AND 90cm FOR ASPHALT / CONCRETE PAVED ROAD IF NOT DESCRIBED ON THE DRAWINGS.

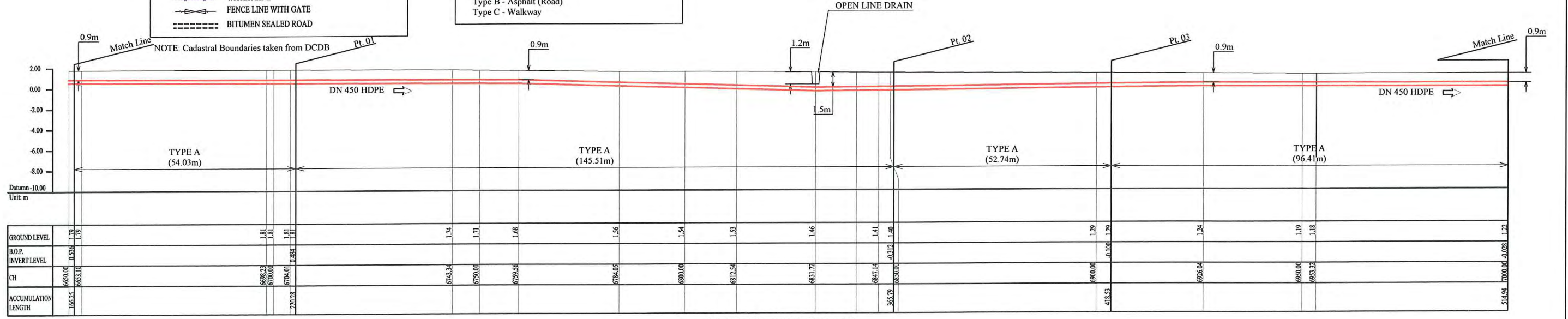
Type A - Soil/others
 Type B - Asphalt (Road)
 Type C - Walkway

PLAN VIEW
 Scale : 1:1000

HDPE PIPE BENDING POINT CORDINATES

Corner Pt. No.	EASTING	NORTHING
PI20-Pt.01	105503.99	104699.76
PI20-Pt.02	105647.67	104722.80
PI20-Pt.03	105699.81	104730.75

NOTE: CADASTRAL BOUNDARIES TAKEN FROM DCDB



SCALES HOR 1 : 1000 VER 1 : 400

PROJECT: PORT MORESBY SEWERAGE SYSTEM UPGRADING PROJECT (POMSSUP)

TITLE: Trunk Main Pipe Plan and Profile (Davara to Lawes Road-20/55)

CLIENT: INDEPENDENT PUBLIC BUSINESS CORPORATION
 PORT MORESBY SEWERAGE SYSTEM UPGRADING PROJECT
 PROJECT MANAGEMENT UNIT (PMU)
 JICA JAPAN INTERNATIONAL COOPERATION AGENCY

CONSULTANTS: NJS CONSULTANTS CO., LTD. - JAPAN

NOTES:

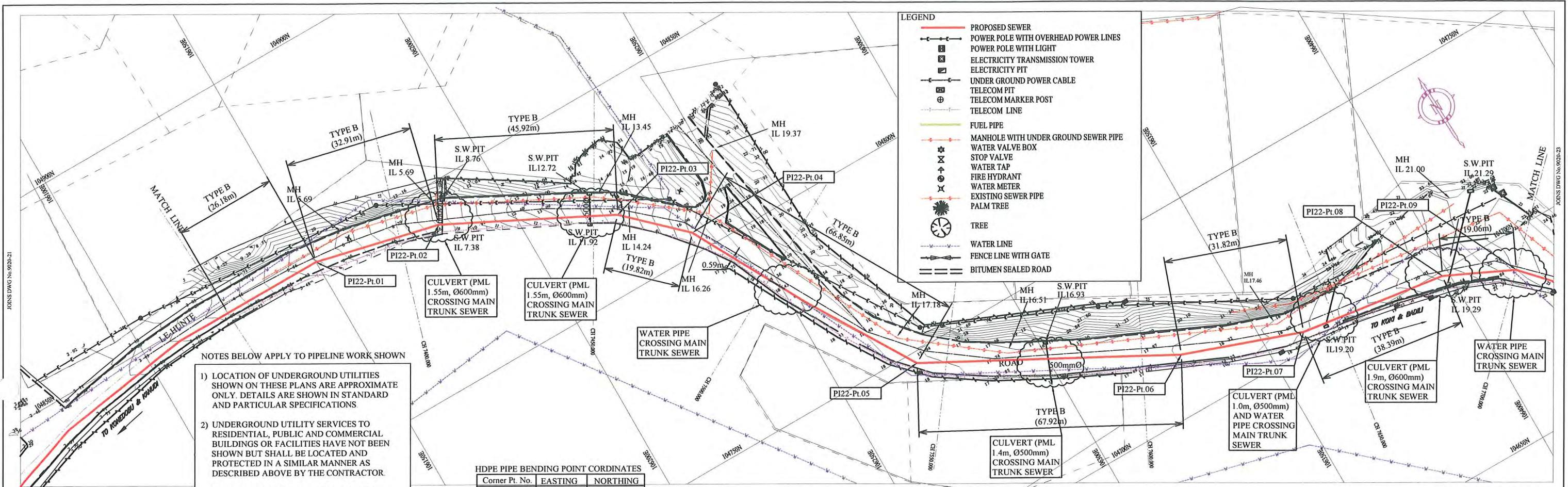
REVISIONS

REV.	DATE	DESCRIPTION

APPROVED by PMU:
 Project Director
 Lot G.Zauya

CHECKED by CONSULTANT
 Project Manager
 T.Fuji

DATE: 1. Dec 2011
 DATE: 1. Dec 2011
 SCALE: 1/1000
 DRAWING NO.: PI-20



NOTES BELOW APPLY TO PIPELINE WORK SHOWN

- 1) LOCATION OF UNDERGROUND UTILITIES SHOWN ON THESE PLANS ARE APPROXIMATE ONLY. DETAILS ARE SHOWN IN STANDARD AND PARTICULAR SPECIFICATIONS
- 2) UNDERGROUND UTILITY SERVICES TO RESIDENTIAL, PUBLIC AND COMMERCIAL BUILDINGS OR FACILITIES HAVE NOT BEEN SHOWN BUT SHALL BE LOCATED AND PROTECTED IN A SIMILAR MANNER AS DESCRIBED ABOVE BY THE CONTRACTOR
- 3) MINIMUM COVER IS 60cm FOR UNPAVED ROAD AND 90cm FOR ASPHALT / CONCRETE PAVED ROAD IF NOT DESCRIBED ON THE DRAWINGS.

Type A - Soil/others
 Type B - Asphalt (Road)
 Type C - Walkway

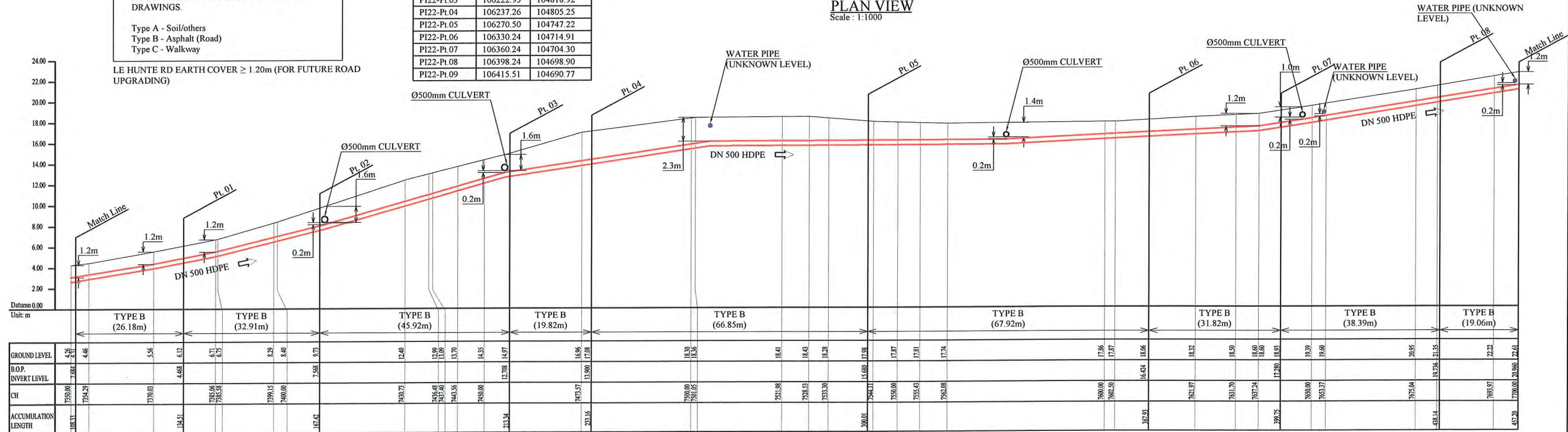
LE HUNTE RD EARTH COVER ≥ 1.20m (FOR FUTURE ROAD UPGRADING)

HDPE PIPE BENDING POINT COORDINATES

Corner Pt. No.	EASTING	NORTHING
PI22-Pt.01	106150.00	104847.35
PI22-Pt.02	106182.00	104839.76
PI22-Pt.03	106222.95	104818.92
PI22-Pt.04	106237.26	104805.25
PI22-Pt.05	106270.50	104747.22
PI22-Pt.06	106330.24	104714.91
PI22-Pt.07	106360.24	104704.30
PI22-Pt.08	106398.24	104698.90
PI22-Pt.09	106415.51	104690.77

PLAN VIEW
Scale: 1:1000

NOTE: CADASTRAL BOUNDARIES TAKEN FROM DCDB



SCALES HOR 1:1000 VER 1:400

PROJECT: PORT MORESBY SEWERAGE SYSTEM UPGRADING PROJECT (POMSSUP)		TITLE: Trunk Main Pipe Plan and Profile (Lawes Road to Receiving Well (1) 1_22/55)	
CLIENT: INDEPENDENT PUBLIC BUSINESS CORPORATION PORT MORESBY SEWERAGE SYSTEM UPGRADING PROJECT PROJECT MANAGEMENT UNIT (PMU) JAPAN INTERNATIONAL COOPERATION AGENCY	CONSULTANTS: NJS CONSULTANTS CO., LTD. - JAPAN	NOTES:	APPROVED by PMU: Project Director Lot G.Zauya
		REVISIONS	CHECKED by CONSULTANT Project Manager T.Fuji
		DATE: 1. Dec 2011	SCALE: 1/1000
		DATE: 1. Dec 2011	DRAWING NO.: PI-22