

APPENDIX 4

Fish O/D Survey Results and Distribution Flow

APPENDIX 4: FISH O/D SURVEY RESULTS AND DISTRIBUTION FLOW

4.1 VEHICLE ENTRY WITH FISH TO JFP WHOLESALE MARKET (PPI - MUARA BARU)

MUARA BARU VEHICLE ENTRY WITH FISH (NO. OF TRUCKS AND FISH VOLUME)																				
	5.Apr		6.Apr		7.Apr		8.Apr		9.Apr		10.Apr		11.Apr		12.Apr		13.Apr		14.Apr	
	No.	Volume (kg)	No.	Volume (kg)	No.	Volume (kg)	No.	Volume (kg)	No.	Volume (kg)	No.	Volume (kg)	No.	Volume (kg)	No.	Volume (kg)	No.	Volume (kg)	No.	Volume (kg)
Type of vehicles																				
Pick-up	25	12,915	30	20,788	48	40,734	21	12,790	29	20,130	24	15,330	16	11,564	20	14,080	37	28,120	29	20,180
Trucks	57	197,900	63	211,140	49	177,668	47	149,030	51	163,000	43	144,950	41	140,860	41	141,754	41	127,625	41	124,670
Container	0	0	0	0	0	0	0	0	1	10,000	1	1,500	0	0	0	0	1	7,000	0	0
Motor-cycle	0	0	0	0	0	0	0	0	0	0	0	0	0	0	0	0	0	0	0	0
Total	82	210,815	93	231,928	97	218,402	68	161,820	81	193,130	68	161,780	57	152,424	61	155,834	79	162,745	70	144,850
Type of business																				
Boat owner	0	0	0	0	2	1,500	1	320	0	0	2	1,150	0	0	2	1,500	0	0	1	1,000
Farm owner	6	12,700	4	6,600	11	18,350	9	14,120	5	2,630	7	17,150	1	5,900	3	9,480	7	11,200	5	17,200
Wholesaler	52	161,970	53	166,700	35	103,014	44	124,180	54	164,200	44	113,150	45	124,974	39	117,844	55	134,895	39	90,560
Broker	17	33,825	21	48,688	36	81,988	11	21,500	14	22,700	12	28,790	8	16,250	8	22,000	9	11,600	17	23,290
Retailer	7	2,320	15	9,940	13	13,550	3	1,700	8	3,600	3	1,540	3	5,300	9	5,010	8	5,050	8	12,800
Total	82	210,815	93	231,928	97	218,402	68	161,820	81	193,130	68	161,780	57	152,424	61	155,834	79	162,745	70	144,850
Type of products																				
Beku es	13	9,250	30	16,648	16	6,240	14	4,560	20	5,270	0	0	3	200	9	7,280	14	5,750	3	800
Beku ikan	11	2,420	22	17,740	23	21,710	46	25,820	35	28,500	0	0	13	11,300	22	11,920	39	40,270	43	28,660
Asap	0	0	0	0	0	0	0	0	0	0	0	0	0	0	0	0	0	0	0	0
Hidup	1	100	0	0	0	0	0	0	0	0	0	0	0	6	5,000	0	0	0	0	0
Segar Utuh	206	186,295	370	195,740	293	188,552	215	131,240	243	157,730	197	159,780	162	140,924	184	131,514	163	113,225	147	113,990
Rusak	0	0	2	800	4	1,900	1	200	1	1,000	0	0	0	0	1	120	2	1,500	0	0
Ada kepala	0	0	1	300	0	0	276	161,820	0	0	0	0	0	0	0	0	0	0	0	0
Filet	0	0	1	300	0	0	0	0	0	0	0	0	0	0	0	0	0	0	1	1,400
Tanpa kepala	0	0	0	0	0	0	0	0	1	500	0	0	0	0	0	0	0	0	0	0
Ada kulit	0	0	0	0	0	0	0	0	1	130	0	0	0	0	0	0	0	0	0	0
Total	231	198,065	426	231,528	336	218,402	552	323,640	301	193,130	197	159,780	178	152,424	222	155,834	218	160,745	194	144,850
Origin																				
Lampung	3	14,500	5	15,940	3	8,670	5	11,000	4	12,700	1	3,000	13	26,300	1	1,000	1	1,000	1	4,500
DKI Jakarta	26	27,465	33	25,500	40	34,750	22	14,560	24	26,280	21	14,780	12	14,950	21	32,020	33	30,720	38	36,780
Jawa Barat	35	102,850	32	100,588	30	81,582	21	66,400	26	75,230	32	103,550	24	70,724	22	76,350	23	61,000	20	73,370
Java Tengah	14	51,000	15	59,600	8	25,000	12	42,160	17	60,000	9	31,750	9	33,450	10	28,644	13	47,325	6	17,700
D.I.Yogyakarta	0	0	0	0	0	0	0	0	0	0	0	0	0	0	0	0	0	0	0	0
Jawa Timur	1	5,000	6	25,800	14	63,100	4	23,000	9	18,420	2	4,500	3	7,000	5	16,100	8	22,000	5	12,500
Banten	1	1,000	2	4,500	2	5,300	4	4,700	1	500	2	3,400	0	0	2	1,720	1	700	0	0
Others	2	9,000	0	0	0	0	0	0	0	0	1	800	0	0	0	0	0	0	0	0
Total	82	210,815	93	231,928	97	218,402	68	161,820	81	193,130	68	161,780	61	152,424	61	155,834	79	162,745	70	144,850

15.Apr		16.Apr		17.Apr		18.Apr		Total				Average per vehicle (kg)	Average per day	
No.	Volume (kg)	No.	Volume (kg)	No.	Volume (kg)	No.	Volume (kg)	No.	Proportion (%)	Volume (kg)	Proportion (%)		No. of vehicle	Fish volume (kg)
37	24,360	42	25,680	19	11,880	32	20,670	409	37.8%	279,221	11.6%	683	29.2	19,944
50	134,515	55	164,430	45	116,360	45	121,420	669	61.9%	2,115,322	87.7%	3,162	47.8	151,094
0	0	0	0	0	0	0	0	3	0.3%	18,500	0.8%	6,167	0.2	1,321
0	0	0	0	0	0	0	0	0	0.0%	0	0.0%	0	0.0	0
87	158,875	97	190,110	64	128,240	77	142,090	1,081	100.0%	2,413,043	100.0%	2,232	77.2	172,360
0	0	0	0	1	700	0	0	9	0.8%	6,170	0.3%	686	0.6	441
1	500	6	17,500	1	1,500	6	18,820	72	6.7%	153,650	6.4%	2,134	5.1	10,975
55	116,505	61	131,670	48	94,940	58	112,760	682	63.1%	1,757,362	72.8%	2,577	48.7	125,526
19	31,520	23	29,640	14	31,100	11	9,710	220	20.4%	412,601	17.1%	1,875	15.7	29,472
12	10,350	7	11,300	0	0	2	800	98	9.1%	83,260	3.5%	850	7.0	5,947
87	158,875	97	190,110	64	128,240	77	142,090	1,081	100.0%	2,413,043	100.0%	2,232	77.2	172,360
19	13,000	0	0	2	3,000	12	5,800	155	4.2%	77,798	3.0%			5,557
55	42,150	61	38,790	32	28,230	41	26,050	443	12.1%	323,560	12.7%			23,111
0	0	0	0	0	0	0	0	0	0.0%	0	0.0%			0
0	0	0	0	0	0	0	0	7	0.2%	5,100	0.2%			364
141	103,155	217	150,520	108	96,760	122	109,840	2,768	75.4%	1,979,265	77.5%			141,376
0	0	1	300	1	250	1	400	14	0.4%	6,470	0.3%			462
0	0	0	0	0	0	0	0	277	7.5%	162,120	6.3%			11,580
0	0	0	0	0	0	0	0	2	0.1%	1,700	0.1%			121
0	0	1	500	0	0	0	0	2	0.1%	1,000	0.0%			71
0	0	0	0	0	0	0	0	1	0.0%	130	0.0%			9
215	158,305	280	190,110	143	128,240	176	142,090	3,669	100.0%	2,557,143	100.1%			182,653
3	7,800	1	7,000	2	6,500	2	2,800	45	4.1%	122,710	5.1%	2,727	3.2	8,765
36	28,700	43	31,880	22	23,380	33	27,160	404	37.2%	368,925	15.3%	913	28.9	26,352
23	61,275	35	108,800	24	57,180	28	74,230	375	34.6%	1,113,129	46.1%	2,968	26.8	79,509
16	40,200	11	26,830	12	29,680	11	28,900	163	15.0%	522,239	21.6%	3,204	11.6	37,303
0	0	0	0	0	0	0	0	0	0.0%	0	0.0%	0	0.0	0
8	19,900	5	14,300	3	10,500	2	5,000	75	6.9%	247,120	10.2%	3,295	5.4	17,651
1	1,000	2	1,300	1	1,000	1	4,000	20	1.8%	29,120	1.2%	1,456	1.4	2,080
0	0	0	0	0	0	0	0	3	0.3%	9,800	0.4%	3,267	0.2	700
87	158,875	97	190,110	64	128,240	77	142,090	1,085	100.0%	2,413,043	100.0%	2,224	77.5	172,360

4.2 VEHICLE LEAVING WITH FISH FROM JFP WHOLESALE MARKET (PPI - MUARA BARU)

MUARA BARU VEHICLE LEAVING WITH FISH (NO. OF TRUCKS AND FISH VOLUME)																				
	5.Apr		6.Apr		7.Apr		8.Apr		9.Apr		10.Apr		11.Apr		12.Apr		13.Apr		14.Apr	
Type of vehicles	No.	Volume (kg)	No.	Volume (kg)	No.	Volume (kg)	No.	Volume (kg)	No.	Volume (kg)	No.	Volume (kg)	No.	Volume (kg)	No.	Volume (kg)	No.	Volume (kg)	No.	Volume (kg)
Pick-up	61	44,578	78	70,628	84	51,162	80	42,820	68	43,150	65	32,457	71	37,090	66	37,225	59	36,509	72	42,838
Trucks	50	104,518	39	89,512	44	111,106	41	98,350	52	98,667	53	113,070	51	105,317	51	103,440	56	114,383	53	106,235
Container	0	0	1	1,000	1	2,000	0	0	1	1,000	2	1,500	0	0	0	0	0	0	0	0
Motor-cycle	2	300	0	0	0	0	0	0	0	0	0	0	0	0	0	0	0	0	0	0
Total	113	149,396	118	161,140	129	164,268	121	141,170	121	142,817	120	147,027	122	142,407	117	140,665	115	150,892	125	149,073
Type of business	No.	Volume (kg)	No.	Volume (kg)	No.	Volume (kg)	No.	Volume (kg)	No.	Volume (kg)	No.	Volume (kg)	No.	Volume (kg)	No.	Volume (kg)	No.	Volume (kg)	No.	Volume (kg)
Boat owner	0	0	0	0	1	520	2	850	0	0	4	1,507	0	0	2	4,925	1	400	1	600
Farm owner	0	0	0	0	3	3,200	2	3,000	1	150	2	2,850	2	4,000	1	500	7	5,810	1	700
Wholesaler	74	94,052	74	113,304	54	90,898	63	99,260	61	93,270	76	111,405	69	101,800	66	96,300	65	103,399	64	83,765
Broker	33	54,350	33	42,150	50	55,030	43	34,500	45	44,490	31	21,965	41	32,702	38	34,940	30	36,060	45	56,345
Retailer	6	994	11	5,686	21	14,620	11	3,560	14	4,907	7	9,300	10	3,905	10	4,000	12	5,223	14	7,663
Total	113	149,396	118	161,140	129	164,268	121	141,170	121	142,817	120	147,027	122	142,407	117	140,665	115	150,892	125	149,073
Type of products	No.	Volume (kg)	No.	Volume (kg)	No.	Volume (kg)	No.	Volume (kg)	No.	Volume (kg)	No.	Volume (kg)	No.	Volume (kg)	No.	Volume (kg)	No.	Volume (kg)	No.	Volume (kg)
Bekus	11	864	59	12,702	64	10,488	20	4,570	147	31,096	37	15,475	12	730	82	17,090	40	9,625	94	18,050
Beku ikan	9	1,441	34	10,218	159	32,000	205	37,230	101	26,020	132	38,422	165	33,860	112	16,895	268	36,435	400	41,745
Asap	0	0	0	0	0	0	0	0	0	0	0	0	0	0	0	0	0	0	0	0
Hidup	0	0	0	0	29	4,744	0	0	4	650	0	0	0	0	46	7,335	0	0	0	0
Segar Utuh	379	147,091	557	136,320	610	115,836	628	99,320	577	81,236	540	91,760	651	107,567	552	99,265	688	103,842	517	87,098
Rusak	0	0	1	250	1	1,000	0	0	1	150	0	0	0	0	0	0	0	0	2	700
Ada kepala	0	0	2	600	0	0	0	0	0	0	0	0	0	0	0	0	0	0	0	0
Ada kulit	0	0	1	200	0	0	0	0	0	0	0	0	0	0	0	0	0	0	0	0
Fillet	0	0	1	500	0	0	0	0	0	0	1	300	0	0	0	0	0	0	1	370
Tanpa kepala	0	0	0	0	1	200	0	0	5	2,100	0	0	0	0	0	0	0	0	0	0
Total	399	149,396	655	160,790	864	164,268	853	141,120	835	141,252	710	145,957	828	142,157	792	140,585	995	149,902	1,014	147,963
Destination	No.	Volume (kg)	No.	Volume (kg)	No.	Volume (kg)	No.	Volume (kg)	No.	Volume (kg)	No.	Volume (kg)	No.	Volume (kg)	No.	Volume (kg)	No.	Volume (kg)	No.	Volume (kg)
Lampung	0	0	0	0	2	4,700	0	0	0	0	0	0	0	1	2,500	0	0	0	0	0
DKI Jakarta	47	52,420	62	74,716	69	52,760	70	57,390	74	66,757	77	65,897	75	61,185	69	55,935	64	50,639	81	70,021
Jawa Barat	43	74,129	35	58,782	30	60,028	31	47,990	30	57,980	26	57,090	26	52,297	30	61,170	40	88,469	27	53,950
Java Tengah	0	0	0	0	3	11,700	2	7,600	1	3,000	2	6,500	1	4,000	1	3,500	0	0	2	7,500
D.I.Yogyakarta	0	0	0	0	0	0	0	0	0	0	0	0	0	0	0	0	0	0	0	0
Jawa Timur	2	4,571	1	1,500	0	0	0	0	0	0	3	8,000	3	8,250	5	12,200	1	2,000	3	7,000
Banten	21	18,276	20	26,142	25	35,080	18	28,190	16	15,080	12	9,540	17	16,675	12	7,860	10	9,784	12	10,602
Total	113	149,396	118	161,140	129	164,268	121	141,170	121	142,817	120	147,027	122	142,407	118	143,165	115	150,892	125	149,073

15.Apr		16.Apr		17.Apr		18.Apr		Total				Average per vehicle (kg)	Average per day	
No.	Volume (kg)	No.	Volume (kg)	No.	Volume (kg)	No.	Volume (kg)	No.	Proportion (%)	Volume (kg)	Proportion (%)		No. of vehicle	Fish volume (kg)
68	42,436	63	40,825	64	37,354	66	46,320	965	59.3%	605,392	30.7%	627	68.9	43,242
47	103,250	35	64,630	36	63,890	47	83,930	655	40.3%	1,360,298	69.0%	2,077	46.8	97,164
0	0	0	0	0	0	0	0	5	0.3%	5,500	0.3%	1,100	0.4	393
0	0	0	0	0	0	0	0	2	0.1%	300	0.0%	0	0.1	21
115	145,686	98	105,455	100	101,244	113	130,250	1,627	100.0%	1,971,490	100.0%	1,212	116.2	140,821
0	0	0	0	0	0	0	0	11	0.7%	8,802	0.5%	800	0.8	629
0	0	1	200	0	0	0	0	20	1.3%	20,410	1.1%	1,021	1.4	1,458
56	76,760	49	59,245	55	61,650	63	73,005	889	56.3%	1,258,113	65.3%	1,415	63.5	89,865
51	64,832	34	35,085	30	27,787	31	36,070	535	33.9%	576,306	29.9%	1,077	38.2	41,165
8	4,094							124	7.9%	63,952	3.3%	516	11.3	5,814
115	145,686	84	94,530	85	89,437	94	109,075	1,579	100.0%	1,927,583	100.0%	1,221	115.2	138,930
85	18,088	164	21,590	3	300	83	9,500	901	7.6%	170,168	8.7%			12,155
606	71,778	339	36,695	257	24,737	321	41,875	3,108	26.3%	449,351	23.0%			32,096
0	0	0	0	0	0	0	0	0	0.0%	0	0.0%			0
0	0	0	0	1	200	0	0	80	0.7%	12,929	0.7%			924
349	51,746	354	46,470	663	75,887	663	78,875	7,728	65.3%	1,322,313	67.5%			94,451
0	0	1	200	0	0	0	0	6	0.1%	2,300	0.1%			164
0	0	0	0	0	0	0	0	2	0.0%	600	0.0%			43
0	0	0	0	0	0	0	0	1	0.0%	200	0.0%			14
0	0	0	0	0	0	0	0	3	0.0%	1,170	0.1%			84
0	0	0	0	0	0	0	0	6	0.1%	2,300	0.1%			164
1,040	141,611	858	104,955	924	101,124	1,067	130,250	11,834	100.0%	1,961,330	100.2%	0	0	140,095
1	5,000	0	0	0	0	0	0	4	0.2%	12,200	0.6%	3,050	0.3	871
66	58,152	61	54,985	61	47,205	65	58,895	941	57.8%	826,957	41.8%	879	67.2	59,068
33	64,370	22	32,090	24	37,640	32	51,520	429	26.3%	797,505	40.3%	1,859	30.6	56,965
1	3,000	0	0	1	3,500	1	3,000	15	0.9%	53,300	2.7%	3,553	1.1	3,807
0	0	0	0	0	0	0	0	0	0.0%	0	0.0%	0	0.0	0
2	5,100	3	4,100	0	0	1	2,500	24	1.5%	55,221	2.8%	2,301	1.7	3,944
13	15,064	12	14,280	14	12,899	14	14,335	216	13.3%	233,807	11.8%	1,082	15.4	16,701
116	150,686	98	105,455	100	101,244	113	130,250	1,629	100.0%	1,978,990	100.0%	1,215	116.4	141,356

4.3 VEHICLE ENTRY WITH FISH TO MUARA ANGKE WHOLESALE MARKET

MUARA ANGKE VEHICLE ENTRY WITH FISH (NO. OF TRUCKS AND FISH VOLUME)																				
	5.Apr		6.Apr		7.Apr		8.Apr		9.Apr		10.Apr		11.Apr		12.Apr		13.Apr		14.Apr	
	No.	Volume (kg)	No.	Volume (kg)	No.	Volume (kg)	No.	Volume (kg)	No.	Volume (kg)	No.	Volume (kg)	No.	Volume (kg)	No.	Volume (kg)	No.	Volume (kg)	No.	Volume (kg)
Type of vehicles																				
Pick-up	66	53,000	80	63,130	71	48,900	72	42,652	81	55,600	56	43,195	62	33,980	63	36,375	77	42,450	96	62,230
Trucks	63	185,160	61	160,550	65	170,850	55	148,900	63	185,900	61	157,850	73	177,410	56	127,430	77	166,260	61	174,450
Container	1	14,000	2	22,000	0	0	1	2,000	2	11,000	0	0	0	0	0	0	0	0	0	0
Motor-cycle	0	0	0	0	0	0	0	0	0	0	0	0	0	0	0	0	0	0	0	0
Total	130	252,160	143	245,680	136	219,750	128	193,552	146	252,500	117	201,045	135	211,390	119	163,805	154	208,710	157	236,680
Type of business																				
Boat owner	0	0	1	2,500	0	0	0	0	0	0	0	0	0	0	0	0	0	0	0	0
Farm owner	3	2,900	5	12,950	4	12,000	6	7,600	3	6,300	1	800	0	0	0	0	7	12,600	3	1,850
Wholesaler	74	183,100	75	147,860	79	159,500	64	122,900	67	167,550	69	134,185	86	167,420	69	122,205	73	123,360	89	172,350
Broker	33	41,360	46	67,220	45	42,150	37	42,602	53	56,550	38	50,210	40	40,450	49	40,780	66	66,700	56	46,280
Retailer	20	24,800	16	15,150	8	6,100	21	20,450	23	22,100	9	15,850	9	3,520	1	820	8	6,050	9	16,200
Total	130	252,160	143	245,680	136	219,750	128	193,552	146	252,500	117	201,045	135	211,390	119	163,805	154	208,710	157	236,680
Type of products																				
Beku es	31	28,200	42	17,550	5	4,000	14	15,200	38	51,100	47	27,760	28	27,250	12	9,650	89	31,250	55	14,580
Beku ikan	19	9,300	29	35,260	61	56,100	31	20,850	24	26,350	22	32,150	28	25,885	34	24,580	35	31,450	39	35,100
Indang/Asin/Kering	1	800	0	0	0	0	2	2,500	1	3,000	0	0	2	250	0	0	0	0	0	0
Hidup	1	1,000	3	300	8	5,650	188	147,302	7	4,100	8	4,850	7	6,350	2	450	1	300	8	3,000
Segar Utuh	161	212,860	204	190,570	183	153,300	7	4,200	172	166,250	145	124,585	183	149,855	161	128,875	176	145,210	170	181,950
Tanpa Tulang	0	0	3	1,600	0	0	0	0	0	0	0	0	0	0	0	0	0	0	0	0
Tanpa Ekor	0	0	0	0	1	700	1	700	0	0	2	10,300	0	0	0	0	0	0	1	300
Rusak	0	0	0	0	0	0	0	0	1	500	0	0	0	0	0	0	0	0	0	0
Fillet	0	0	0	0	0	0	0	0	0	0	0	0	0	0	0	0	0	0	0	0
Total	213	252,160	281	245,280	258	219,750	243	190,752	243	251,300	224	199,645	248	209,590	209	163,555	301	208,210	273	234,930
Origin																				
Lampung	15	35,000	9	23,150	11	22,500	9	24,300	12	26,250	9	30,400	11	16,500	11	20,650	7	13,100	8	23,450
DKI Jakarta	45	44,600	56	54,810	52	41,700	45	29,102	49	42,400	39	43,345	47	36,260	54	42,535	64	43,200	69	49,650
Jawa Barat	27	47,600	40	84,850	35	69,000	36	58,300	41	85,900	40	69,200	41	68,650	29	53,570	35	63,600	41	66,550
Jawa Tengah	22	67,900	20	47,750	25	59,600	17	48,000	21	50,500	13	24,350	17	39,660	8	17,900	21	41,410	17	52,750
D.I.Yogyakarta	0	0	0	0	0	0	0	0	0	0	0	0	0	0	1	4,000	0	0	0	0
Jawa Timur	10	48,560	6	23,000	7	23,000	12	28,400	9	31,050	10	31,100	12	35,100	9	20,700	11	33,100	12	40,400
Banten	11	8,500	12	12,120	6	3,950	9	5,450	14	16,400	6	2,650	7	15,220	7	4,450	16	14,300	9	3,480
Total	130	252,160	143	245,680	136	219,750	128	193,552	146	252,500	117	201,045	135	211,390	119	163,805	154	208,710	156	236,280

15.Apr		16.Apr		17.Apr		18.Apr		Total				Average per vehicle (kg)	Average per day	
No.	Volume (kg)	No.	Volume (kg)	No.	Volume (kg)	No.	Volume (kg)	No.	Proportion (%)	Volume (kg)	Proportion (%)		No. of vehicle	Fish volume (kg)
78	44,440	66	45,550	50	34,750	60	44,730	978	52.1%	588,848	20.1%	602	69.9	42,061
65	160,150	64	166,300	68	148,340	61	160,950	893	47.6%	2,290,500	78.2%	2,565	63.8	163,607
0	0	0	0	0	0	0	0	6	0.3%	49,000	1.7%	8,167	0.4	3,500
0	0	0	0	0	0	0	0	0	0.0%	0	0.0%	0	0.0	0
143	204,590	130	211,850	118	183,090	121	205,680	1,877	100.0%	2,928,348	100.0%	1,560	134.1	209,168
2	2,500	0	0	1	500	0	0	4	0.2%	5,500	0.2%	1,375	0.3	393
0	0	0	0	0	0	2	7,000	34	1.8%	64,000	2.2%	1,882	2.4	4,571
80	145,990	74	123,150	77	142,690	71	140,830	1,047	56.0%	2,053,090	69.0%	1,961	74.8	146,649
53	41,050	38	44,300	36	34,600	42	41,350	632	33.8%	655,602	22.0%	1,037	45.1	46,829
		18	44,400	4	5,300	6	16,500	152	8.1%	197,240	6.6%	1,298	11.7	15,172
135	189,540	130	211,850	118	183,090	121	205,680	1,869	100.0%	2,975,432	100.0%	1,592	134.3	213,615
50	17,100	26	20,050	15	10,500	12	3,100	464	13.7%	262,765	8.9%			18,769
41	32,540	46	36,900	46	51,800	58	40,130	513	15.2%	458,395	15.5%			32,743
0	0	0	0	0	0	1	500	7	0.2%	7,050	0.2%			504
6	3,400	4	2,100	8	3,800	4	3,400	255	7.6%	186,002	6.3%			13,286
160	148,050	141	152,300	136	113,790	127	150,550	2,126	63.0%	2,022,345	68.6%			144,453
0	0	0	0	0	0	0	0	3	0.1%	1,600	0.1%			114
0	0	0	0	0	0	0	0	5	0.1%	12,000	0.4%			857
0	0	0	0	0	0	0	0	1	0.0%	500	0.0%			36
0	0	0	0	2	3,000	0	0	2	0.1%	3,000	0.1%			214
257	201,090	217	211,350	207	182,890	202	197,680	3,376	100.0%	2,953,657	100.1%	0	0	210,975
8	20,400	5	15,600	9	13,400	10	23,400	134	7.1%	284,658	9.6%	2,124	9.6	20,333
65	44,290	55	47,350	39	46,400	52	53,730	731	39.0%	619,372	20.9%	847	52.2	44,241
40	74,900	38	78,900	36	55,190	28	54,650	507	27.0%	930,860	31.4%	1,836	36.2	66,490
13	36,850	14	42,000	12	33,400	8	18,000	228	12.2%	580,070	19.6%	2,544	16.3	41,434
0	0	0	0	0	0	0	0	1	0.1%	4,000	0.1%	0	0.1	286
8	22,650	10	24,300	10	23,700	13	48,200	139	7.4%	433,260	14.6%	3,117	9.9	30,947
9	5,500	8	3,700	12	11,000	10	7,700	136	7.2%	114,420	3.9%	841	9.7	8,173
143	204,590	130	211,850	118	183,090	121	205,680	1,876	100.0%	2,966,640	100.0%	1,581	134.0	211,903

4.4 VEHICLE LEAVING WITH FISH FROM MUARA ANGKE WHOLESALE MARKET

MUARA ANGKE VEHICLE LEAVING WITH FISH (NO. OF TRUCKS AND FISH VOLUME)																				
	5.Apr		6.Apr		7.Apr		8.Apr		9.Apr		10.Apr		11.Apr		12.Apr		13.Apr		14.Apr	
	No.	Volume (kg)	No.	Volume (kg)	No.	Volume (kg)	No.	Volume (kg)	No.	Volume (kg)	No.	Volume (kg)	No.	Volume (kg)	No.	Volume (kg)	No.	Volume (kg)	No.	Volume (kg)
Type of vehicles																				
Pick-up	163	156,175	174	92,950	158	89,756	159	72,270	156	68,650	148	66,470	161	73,244	154	63,030	124	45,145	148	56,850
Trucks	6	12,000	9	13,200	4	10,500	13	32,200	11	51,300	9	15,800	25	47,894	12	46,100	13	35,620	13	30,500
Container	1	10,000	0	0	0	0	0	0	0	0	0	0	0	0	0	0	0	0	0	0
Motor-cycle	3	2,400	0	0	0	0	0	0	0	0	0	0	0	0	0	0	0	0	0	0
Total	173	180,575	183	106,150	162	100,256	172	104,470	167	119,950	157	82,270	186	121,138	166	109,130	137	80,765	161	87,350
Type of business																				
Boat owner	1	700	3	3,400	2	1,000	2	600	1	1,100	0	0	0	0	1	200	0	0	0	0
Farm owner	2	1,000	0	0	0	0	2	1,600	0	0	0	0	0	0	0	0	0	0	1	500
Wholesaler	53	93,560	55	36,050	43	28,776	46	49,600	33	48,560	37	24,550	47	54,494	6	26,050	5	17,650	13	22,650
Broker	92	72,515	110	61,450	108	66,630	101	46,160	114	63,320	114	55,220	128	60,080	153	79,880	121	56,765	140	61,570
Retailer	25	12,800	15	5,250	9	3,850	21	6,510	19	6,970	6	2,500	11	6,564	6	3,000	3	4,700	7	2,630
Total	173	180,575	183	106,150	162	100,256	172	104,470	167	119,950	157	82,270	186	121,138	166	109,130	129	79,115	161	87,350
Type of products																				
Beku es	123	52,495	174	34,450	132	27,300	96	31,270	95	37,500	84	15,840	106	23,680	63	7,695	82	20,640	141	38,310
Beku ikan	8	2,300	15	4,450	11	4,176	7	4,350	16	10,950	7	1,850	20	28,784	31	35,930	9	14,390	17	7,350
Asap	0	0	2	1,700	0	0	0	0	0	0	0	0	0	0	0	0	0	0	0	0
Hidup	29	11,120	21	4,250	34	5,350	19	3,500	24	2,825	15	1,925	21	4,630	20	2,930	7	1,100	12	3,250
Segar Utuh	213	86,830	224	61,100	205	62,330	244	64,650	219	69,695	232	62,655	183	63,544	202	62,575	162	44,635	153	38,240
Fermentasi / peda	0	0	0	0	1	800	0	0	0	0	0	0	0	0	0	0	0	0	0	0
Rusak	0	0	0	0	1	100	0	0	0	0	0	0	0	0	0	0	0	0	0	0
Fillet	0	0	0	0	0	0	0	0	0	0	0	0	0	0	0	0	0	0	0	0
Total	373	152,745	436	105,950	384	100,056	366	103,770	354	120,970	338	82,270	330	120,638	316	109,130	260	80,765	323	87,150
Destination																				
Lampung	2	1,400	2	2,800	1	1,000	2	5,700	1	400	0	0	3	10,244	2	11,000	1	1,800	1	1,200
DKI Jakarta	74	62,670	64	31,600	49	34,906	57	24,470	58	49,820	59	29,680	69	46,164	63	51,490	50	40,690	72	39,600
Jawa Barat	36	53,250	45	30,600	41	29,450	42	28,710	40	20,280	33	15,900	45	23,330	34	15,150	33	16,580	28	13,520
Jawa Tengah	0	0	1	4,000	1	1,000	4	9,000	1	750	1	4,500	1	2,000	0	0	0	0	0	0
D.I.Yogyakarta	0	0	0	0	0	0	0	0	0	0	0	0	0	0	0	0	0	0	0	0
Jawa Timur	3	3,050	1	2,000	1	400	0	0	2	6,700	2	850	1	4,000	3	1,300	1	400	1	2,000
Banten	58	60,205	70	35,150	69	33,500	66	35,890	65	42,000	62	31,340	67	35,400	64	30,190	52	21,295	59	31,030
Others	0	0	0	0	0	0	1	700	0	0	0	0	0	0	0	0	0	0	0	0
Total	173	180,575	183	106,150	162	100,256	172	104,470	167	119,950	157	82,270	186	121,138	166	109,130	137	80,765	161	87,350

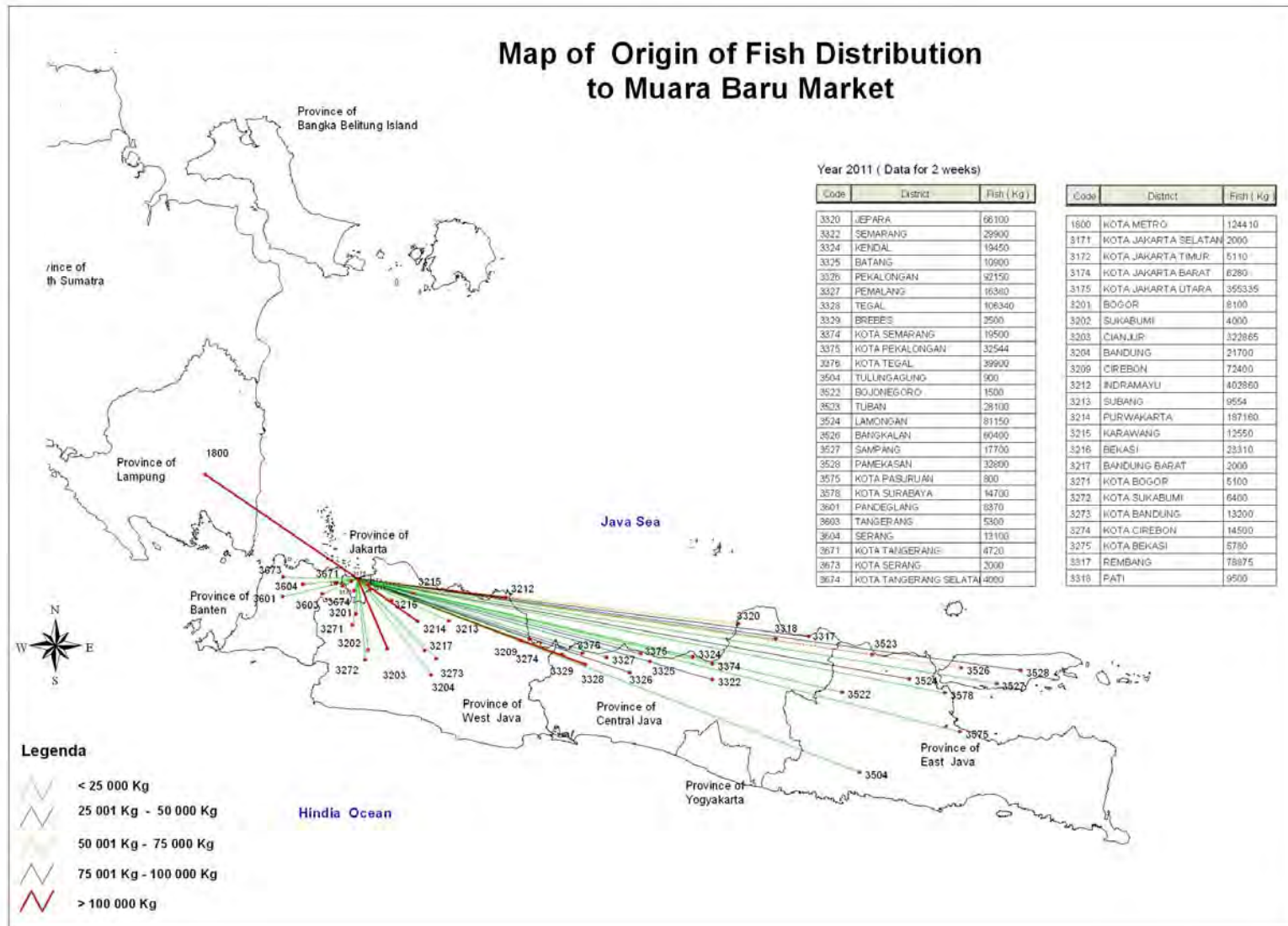
15.Apr		16.Apr		17.Apr		18.Apr		Total				Average per vehicle (kg)	Average per day	
No.	Volume (kg)	No.	Volume (kg)	No.	Volume (kg)	No.	Volume (kg)	No.	Proportion (%)	Volume (kg)	Proportion (%)		No. of vehicle	Fish volume (kg)
168	65,820	162	59,065	147	68,200	158	71,100	2,180	92.7%	1,048,725	71.6%	481	155.7	74,909
11	27,720	14	23,400	15	35,000	13	22,900	168	7.1%	404,134	27.6%	2,406	12.0	28,867
0	0	0	0	0	0	0	0	1	0.0%	10,000	0.7%	10,000	0.1	714
0	0	0	0	0	0	0	0	3	0.1%	2,400	0.2%	0	0.2	171
179	93,540	176	82,465	162	103,200	171	94,000	2,352	100.0%	1,465,259	100.0%	623	168.0	104,661
0	0	1	1,000	0	0	0	0	11	0.5%	8,000	0.5%	727	0.8	571
0	0	0	0	0	0	0	0	5	0.2%	3,100	0.2%	620	0.4	221
12	16,830	4	7,300	14	20,950	4	14,000	372	15.9%	461,020	31.5%	1,239	26.6	32,930
164	74,960	155	62,405	137	68,090	155	73,930	1,792	76.5%	902,975	61.7%	504	128.0	64,498
3	1,750	16	11,760	11	14,160	12	6,070	164	7.0%	88,514	6.0%	540	11.7	6,322
179	93,540	176	82,465	162	103,200	171	94,000	2,344	100.0%	1,463,609	100.0%	624	167.4	104,544
177	39,890	175	36,185	194	28,140	52	7,870	1,694	33.9%	401,265	28.0%			28,662
6	2,880	15	8,690	58	28,135	125	29,180	345	6.9%	183,415	12.8%			13,101
0	0	0	0	0	0	1	900	3	0.1%	2,600	0.2%			186
19	3,785	16	2,410	18	3,255	13	2,600	268	5.4%	52,930	3.7%			3,781
174	46,985	165	35,180	136	43,070	175	52,950	2,687	53.7%	794,439	55.3%			56,746
0	0	0	0	0	0	0	0	1	0.0%	800	0.1%			57
0	0	0	0	0	0	0	0	1	0.0%	100	0.0%			7
0	0	0	0	2	300	0	0	2	0.0%	300	0.0%			21
376	93,540	371	82,465	408	102,900	366	93,500	5,001	100.0%	1,435,549	100.0%	0	0	102,561
1	800	2	3,500	0	0	0	0	18	0.8%	39,844	2.7%	2,214	1.3	2,846
67	43,970	63	29,380	66	53,150	58	36,170	869	36.9%	573,760	39.2%	660	62.1	40,983
31	15,730	25	9,885	39	19,000	47	28,600	519	22.1%	319,985	21.8%	617	37.1	22,856
1	5,000	2	3,100	1	2,500	1	1,500	14	0.6%	33,350	2.3%	2,382	1.0	2,382
0	0	0	0	0	0	0	0	0	0.0%	0	0.0%	0	0.0	0
0	0	2	1,020	0	0	0	0	17	0.7%	21,720	1.5%	1,278	1.2	1,551
79	28,040	82	35,580	56	28,550	65	27,730	914	38.9%	475,900	32.5%	521	65.3	33,993
0	0	0	0	0	0	0	0	1	0.0%	700	0.0%	700	0.1	50
179	93,540	176	82,465	162	103,200	171	94,000	2,352	100.0%	1,465,259	100.0%	623	168.0	104,661

4.5 BOAT ENTRY WITH FISH TO MUARA ANGKE FISHING PORT

MUARA ANGKE BOAT ENTRY WITH FISH (NO. OF BOATS AND FISH VOLUME)																								
Date	No. of boats	Type of boat		Size of Boat			Port of Registration		No. of Fishing Days						Fish landed (kg)	Volume of Fish by Destination (kg)				Volume by Type of Fish (kg)				
		Fishing	Transport	OBE	<20GT	20-50GT	50GT<	M. Angke	Others	<1 day	2-3 days	4-7 days	7-15days	15-30days		>30days	TPI	Pasar	UPI	Broker	Segar Utuh	Beku Es	Beku Ikan	Hidup
5.Apr	11	11	0	4	1	6	0	10	1	5	1	1	0	2	2	41,550	40,300	0	0	1,250	5,000	14,050	22,500	0
6.Apr	17	16	1	6	2	9	0	14	3	1	4	3	4	3	1	53,660	48,710	850	2,000	2,100	2,000	0	51,360	0
7.Apr	16	11	5	4	1	11	0	15	1	4	5	1	3	1	2	72,680	72,680	0	0	0	13,500	24,700	33,580	0
8.Apr	18	11	7	6	4	8	0	12	6	13	1	0	0	0	4	53,362	21,435	31,927	0	0	1,697	24,468	27,700	0
9.Apr	23	18	5	5	4	13	1	14	9	6	3	1	2	2	9	118,655	98,015	19,740	900	0	1,875	93,653	22,650	0
10.Apr	19	14	5	3	5	11	0	12	7	7	3	0	1	3	5	65,653	47,000	18,653	0	0	1,050	16,050	47,953	500
11.Apr	21	18	3	6	3	9	3	13	8	5	0	2	4	1	9	89,600	83,350	5,880	0	370	10,680	71,450	7,070	0
12.Apr	21	19	2	13	1	7	0	6	15	7	2	4	2	2	4	45,444	31,200	13,056	0	2,188	4,394	26,900	14,850	0
13.Apr	18	14	4	1	0	16	1	13	5	5	2	1	2	4	4	91,040	67,600	8,640	0	14,800	12,870	57,050	25,350	0
14.Apr	21	20	1	15	1	4	1	8	13	12	3	1	1	2	1	47,664	15,000	18,664	1,500	12,500	13,654	22,000	12,000	0
15.Apr	20	20	0	12	2	5	1	7	13	12	0	2	2	1	3	52,873	13,050	16,050	0	23,773	5,073	38,900	8,900	0
16.Apr	22	18	4	10	3	9	0	7	15	13	0	1	2	3	3	62,513	23,300	24,100	0	15,113	10,713	33,850	17,950	0
17.Apr	24	23	1	15	4	5	0	16	8	16	0	2	0	2	4	39,325	20,000	8,220	0	11,105	2,225	23,100	13,900	0
18.Apr	28	26	2	16	3	9	0	13	15	15	2	1	2	2	6	61,369	21,000	19,410	0	159	3,039	40,500	17,500	0
Total	279	239	40	116	34	122	7	160	119	121	26	20	25	28	57	895,388	602,640	185,190	4,400	83,358	87,770	486,671	323,263	500
%		85.7%	14.3%	41.6%	12.2%	43.7%	2.5%	57.3%	42.7%	43.4%	9.3%	7.2%	9.0%	10.0%	20.4%		67.3%	20.7%	0.5%	9.3%	9.8%	54.4%	36.1%	0.1%
Average	19.9	17.1	2.9	8.3	2.4	8.7	0.5	11.4	8.5	8.6	1.9	1.4	1.8	2.0	4.1	63,956	43,046	13,228	314	5,954	6,269	34,762	23,090	36

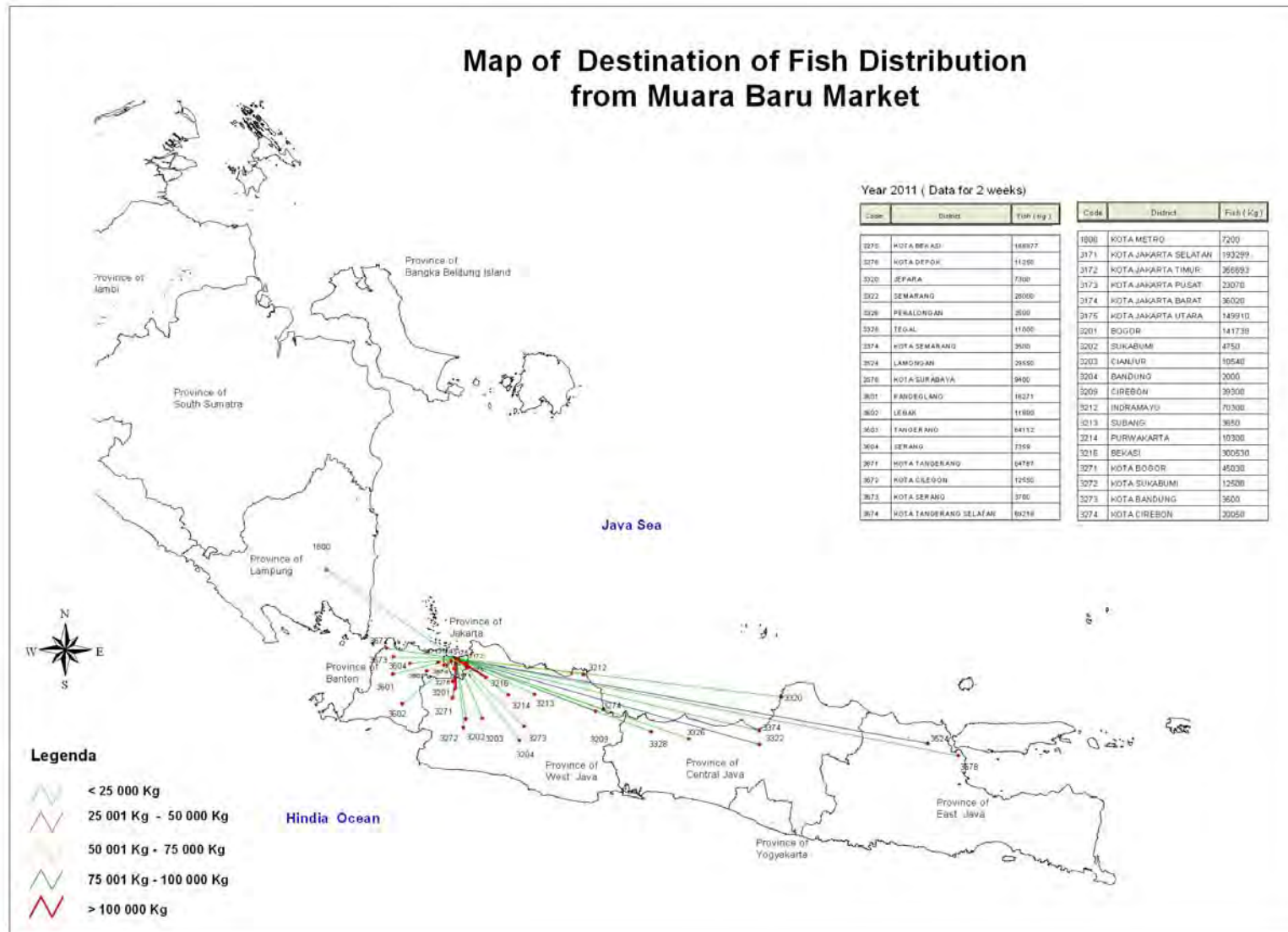
4.6 MAP SHOWING FISH ORIGINS TO JFP WHOLESAL MARKET (PPI - MUARA BARU)

A-4-10

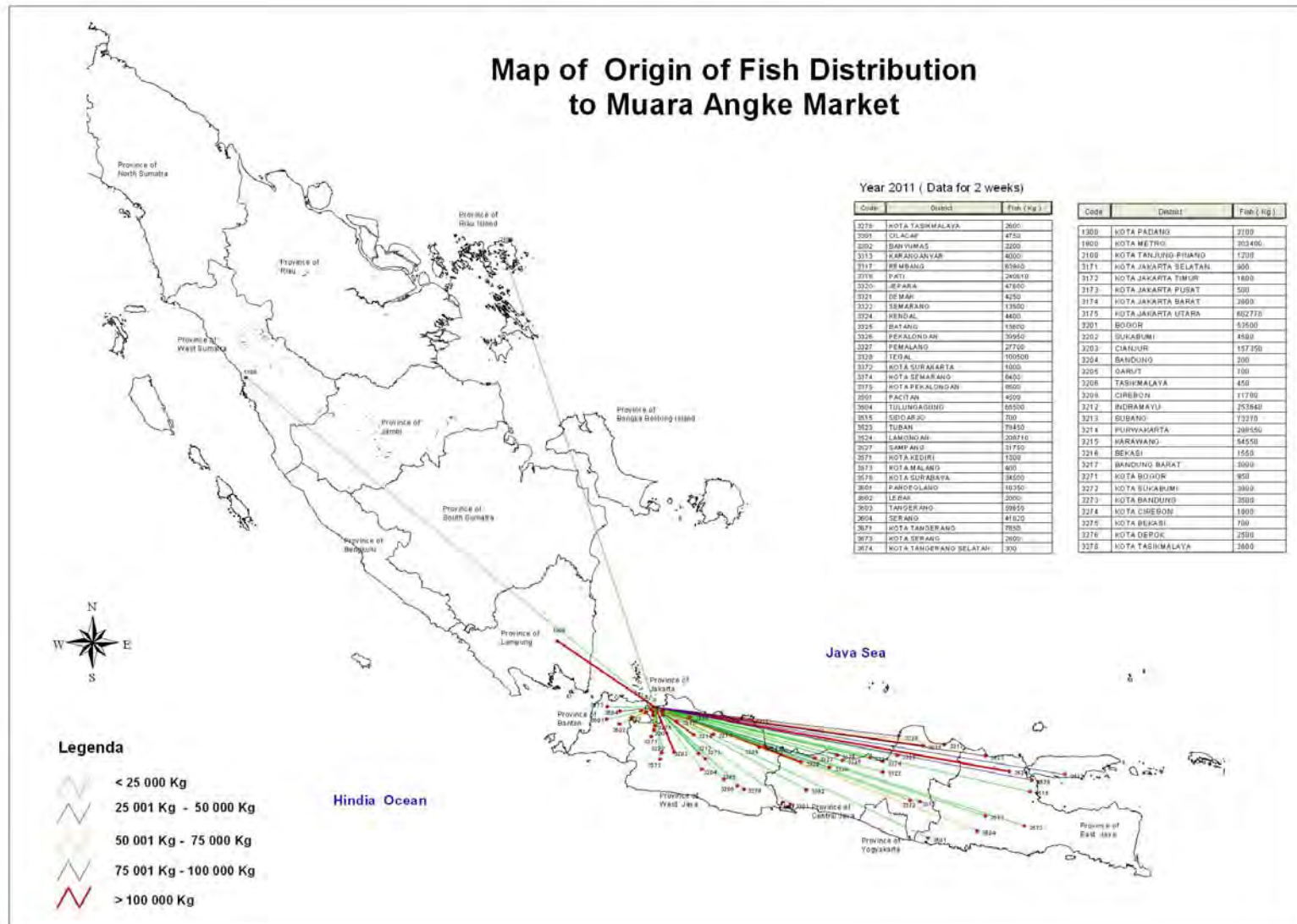


4.7 MAP SHOWING FISH DESTINATIONS FROM JFP WHOLESALER MARKET (PPI - MUARA BARU)

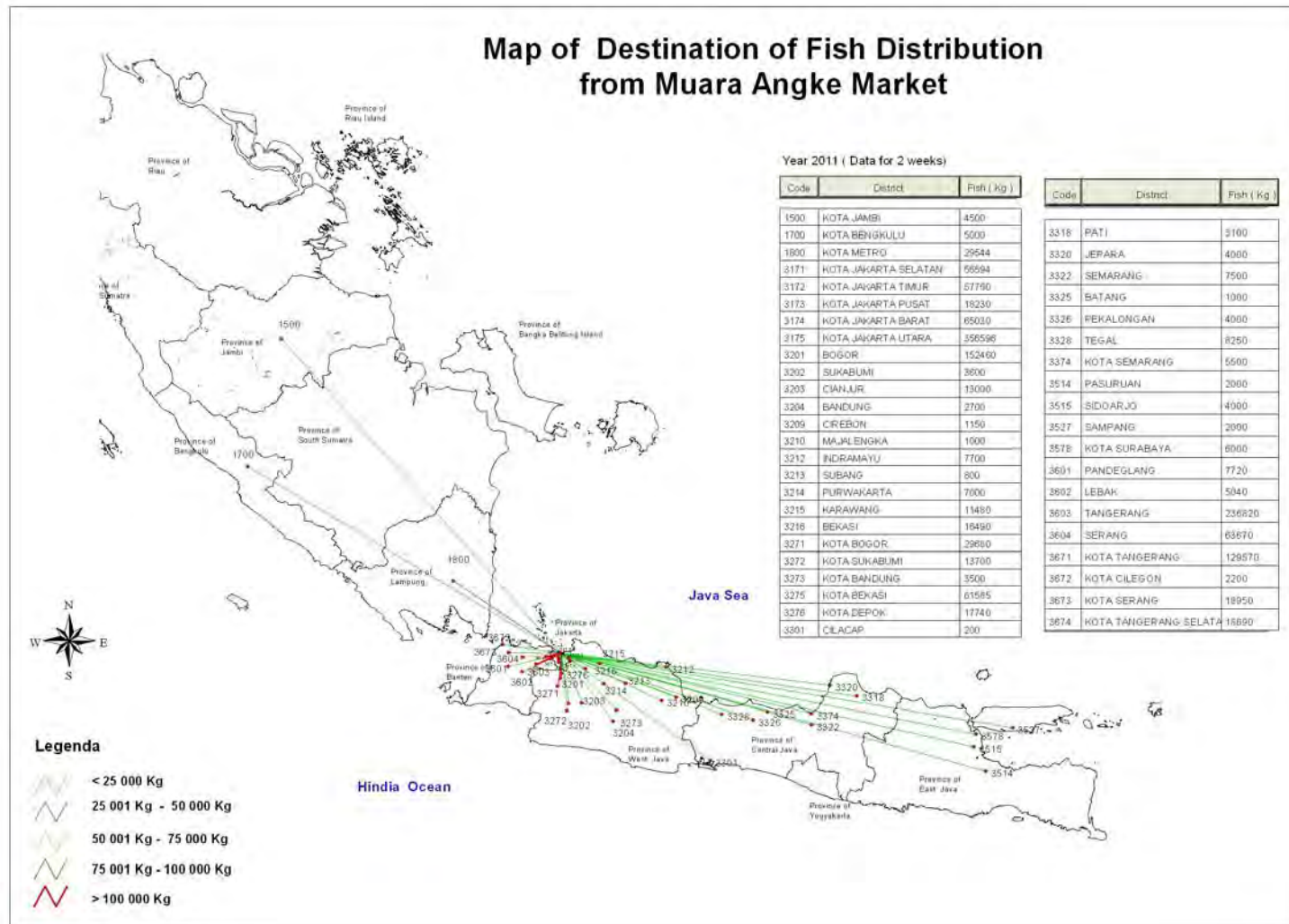
A-4-11



4.8 MAP SHOWING FISH ORIGINS TO MUARA ANGKE WHOLESAL MARKET

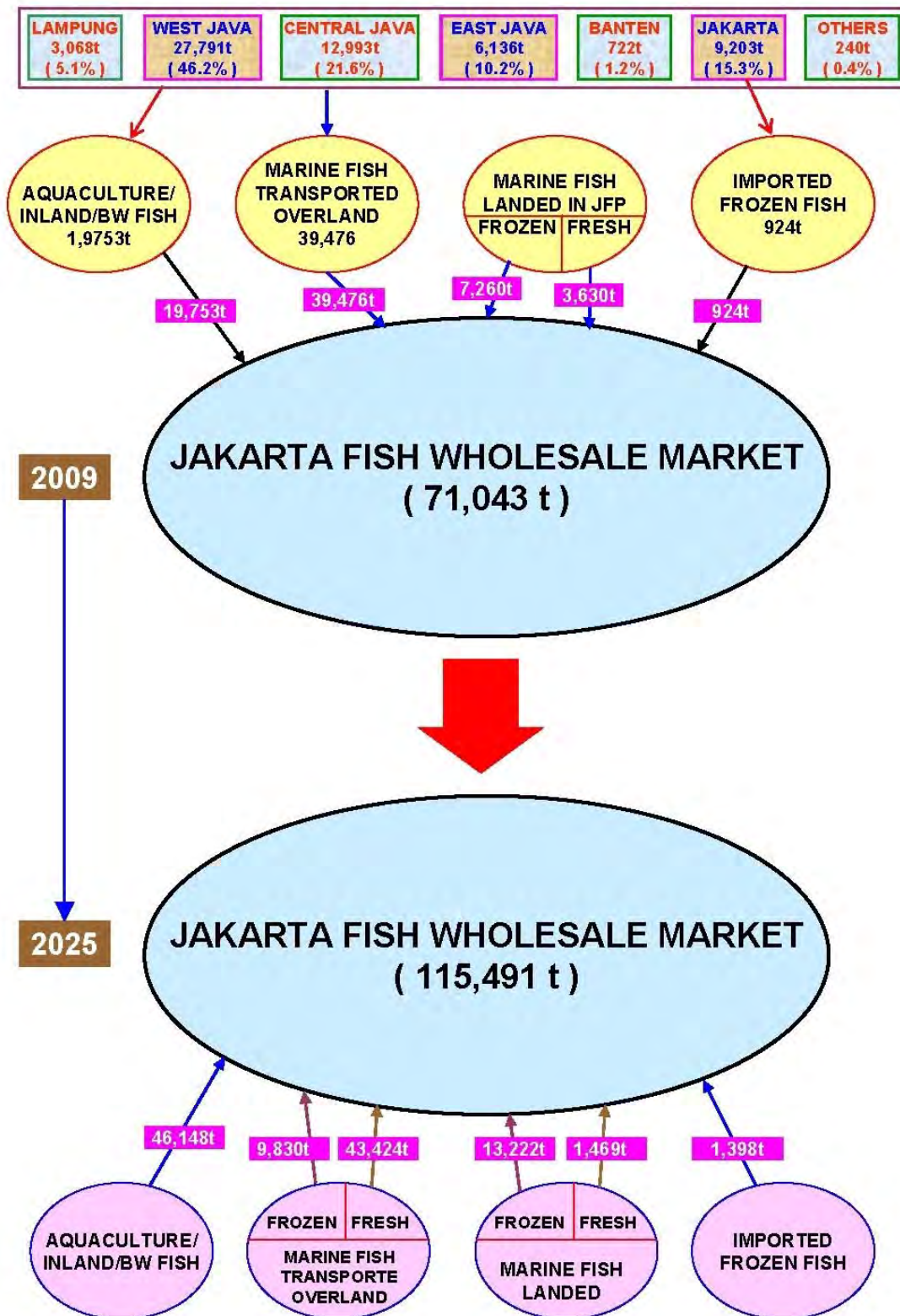


4.9 MAP SHOWING FISH DESTINATIONS FROM MUARA ANGKE WHOLESAL MARKET



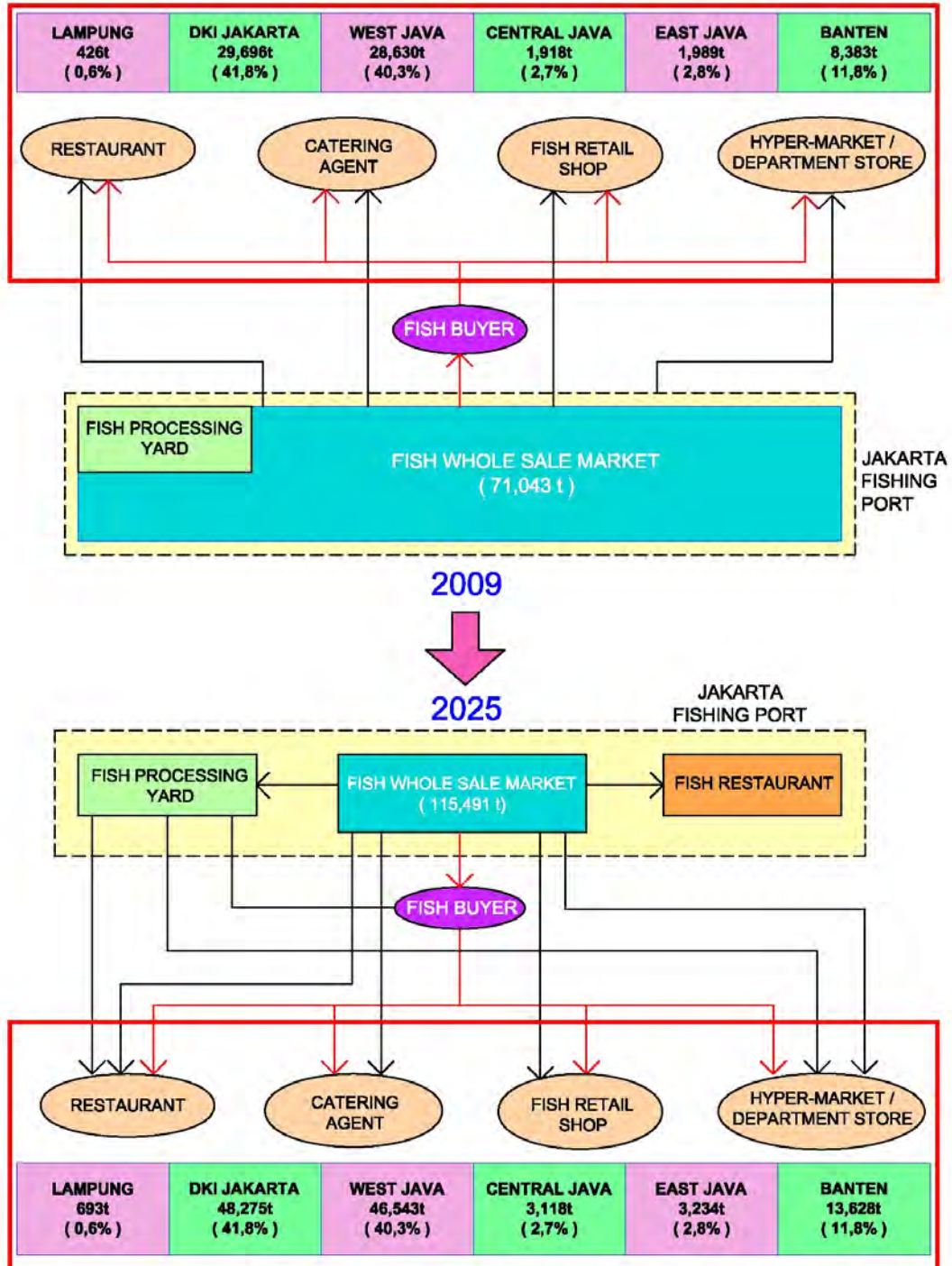
4.6 FLOW OF FISH BROUGHT IN FISH WHOLESALE MARKET IN JFP

FLOW OF FISH TRANSPORTED IN PPT / JFP



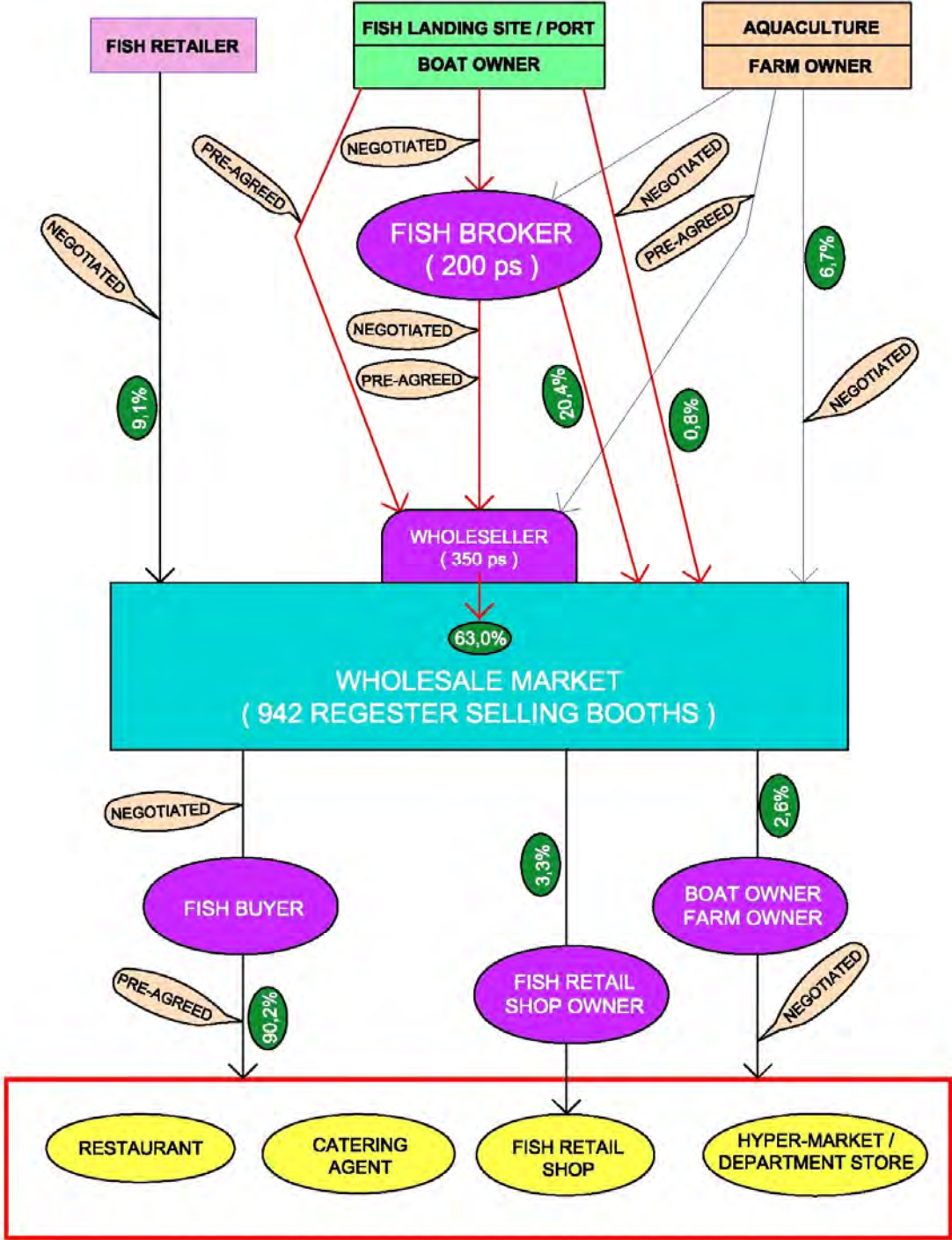
4.7 FLOW OF FISH DISTRIBUTED FROM JFP WHOLESALE MARKET

FLOW OF FISH DISTRIBUTION FROM PPT / JFP

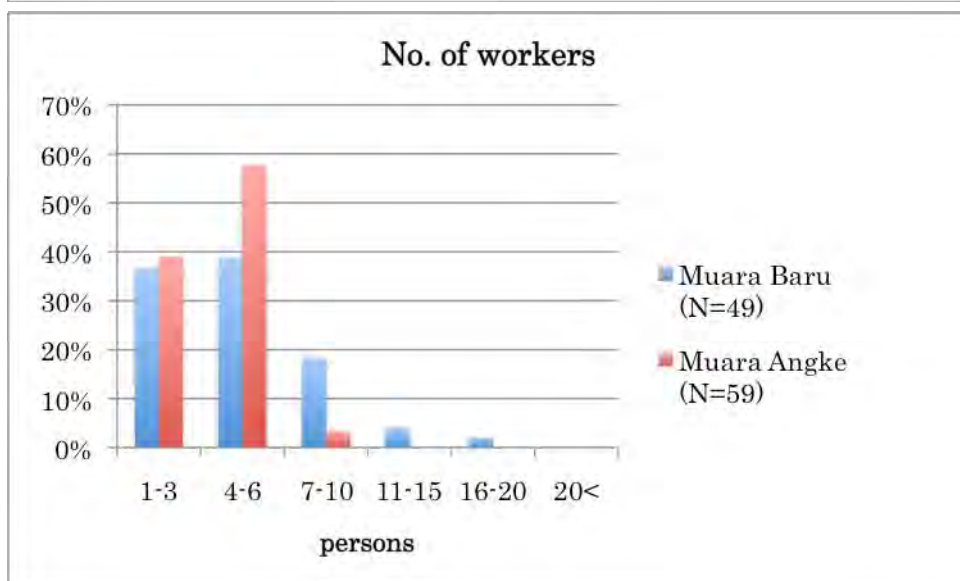
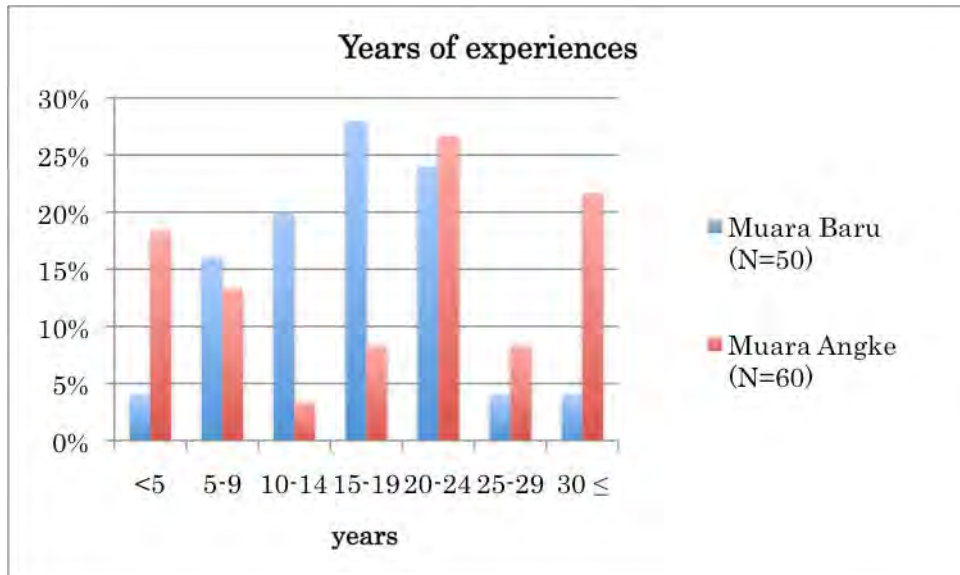
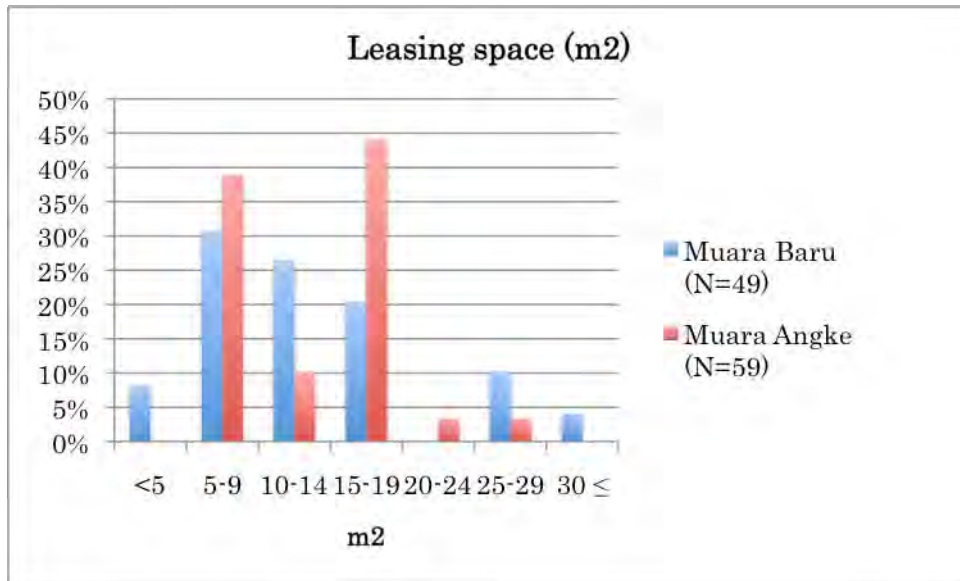


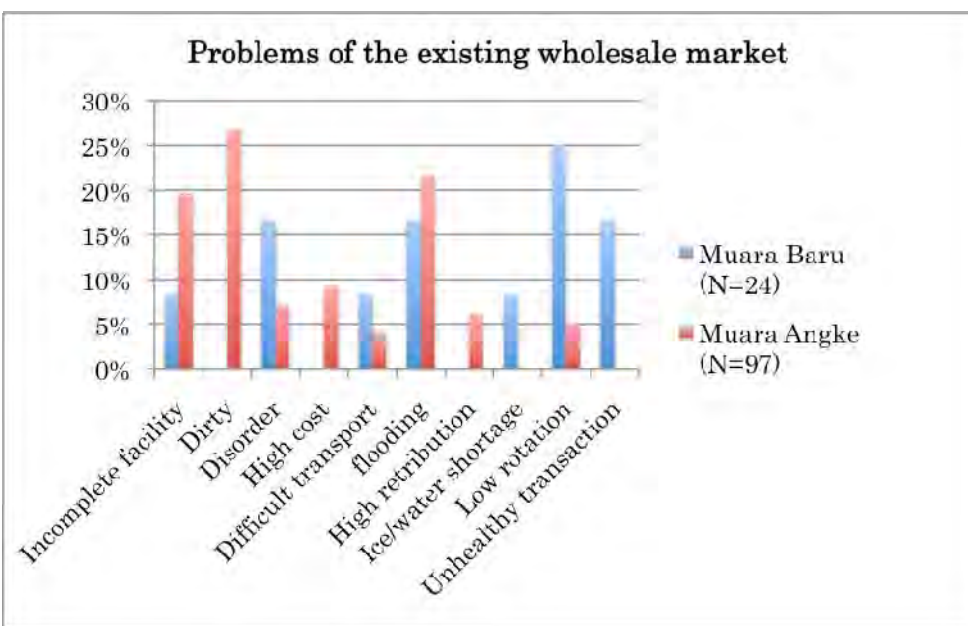
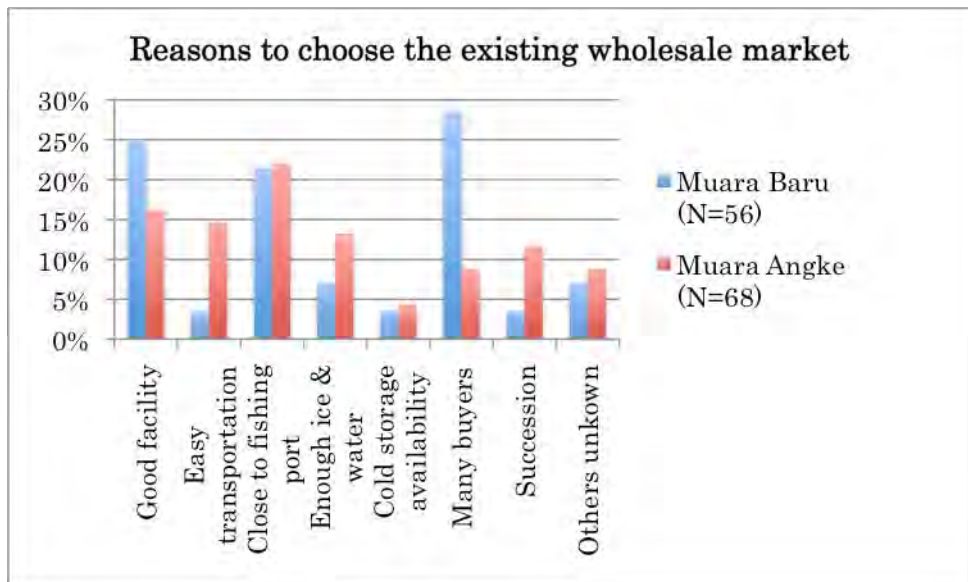
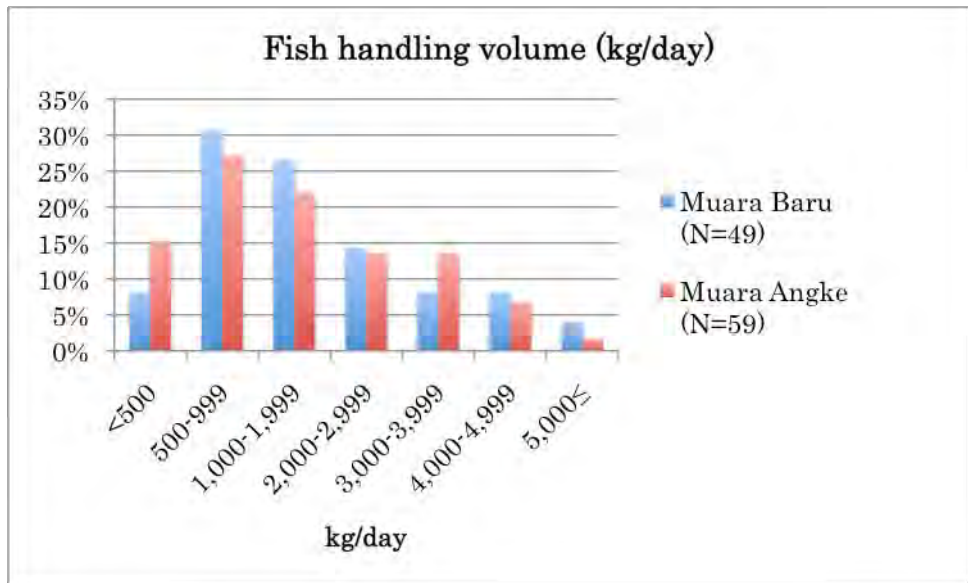
4.8 FLOW OF FISH TRANSACTION AROUND FISH WHOLESALE MARKET JFP

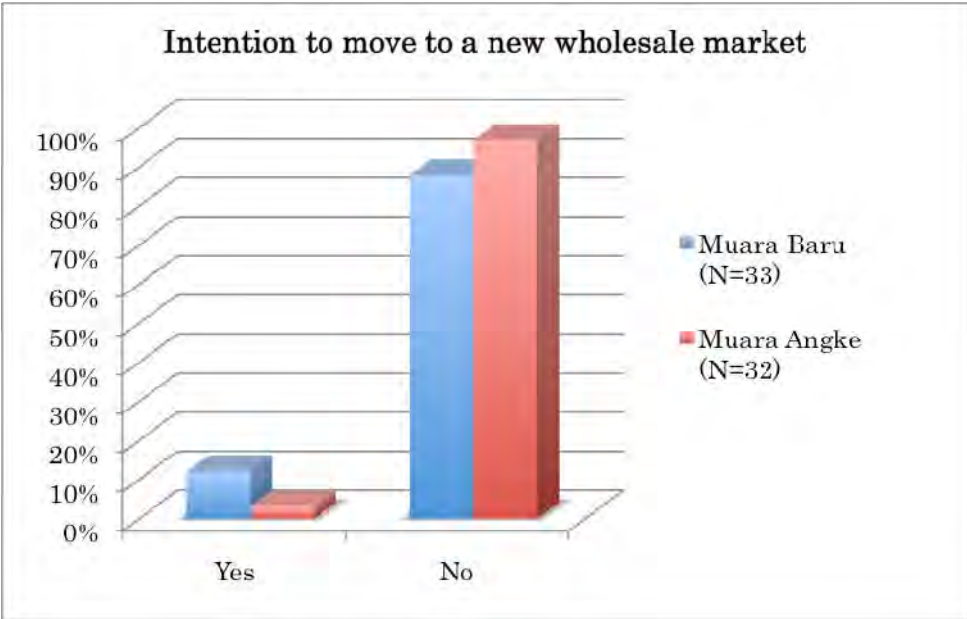
FLOW OF FISH TRANSACTION



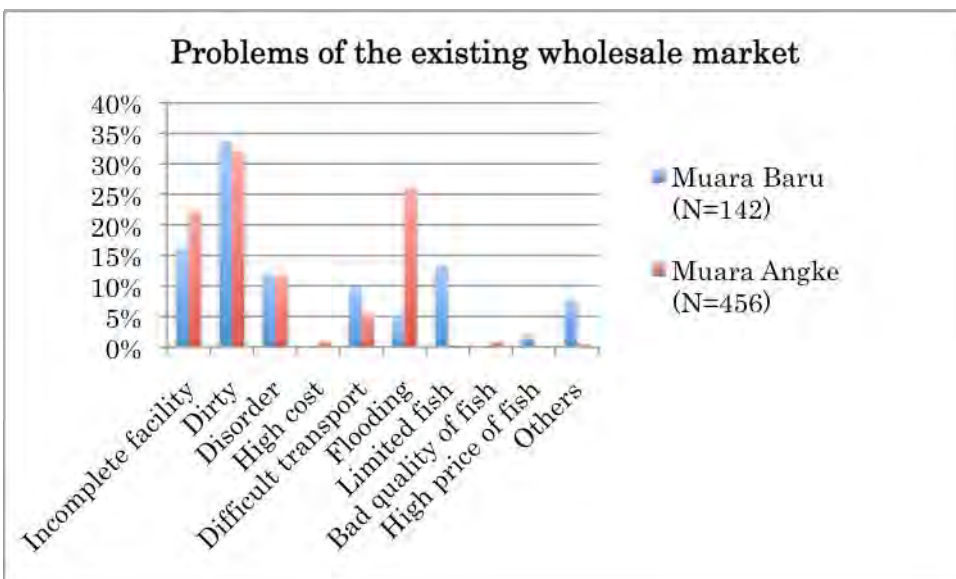
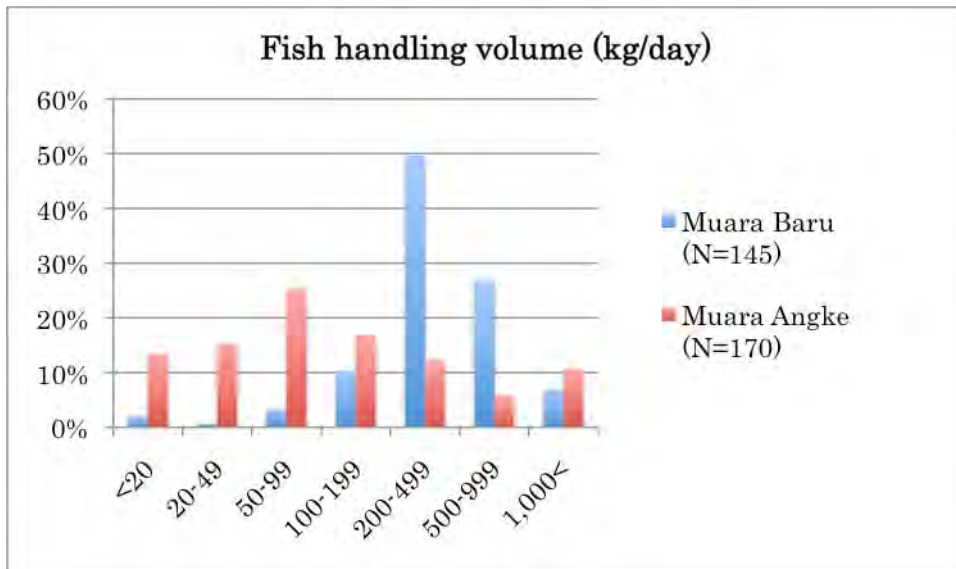
4.9 PROFILES OF WHOLESALERS IN MUARA BARU AND MUARA ANGKE







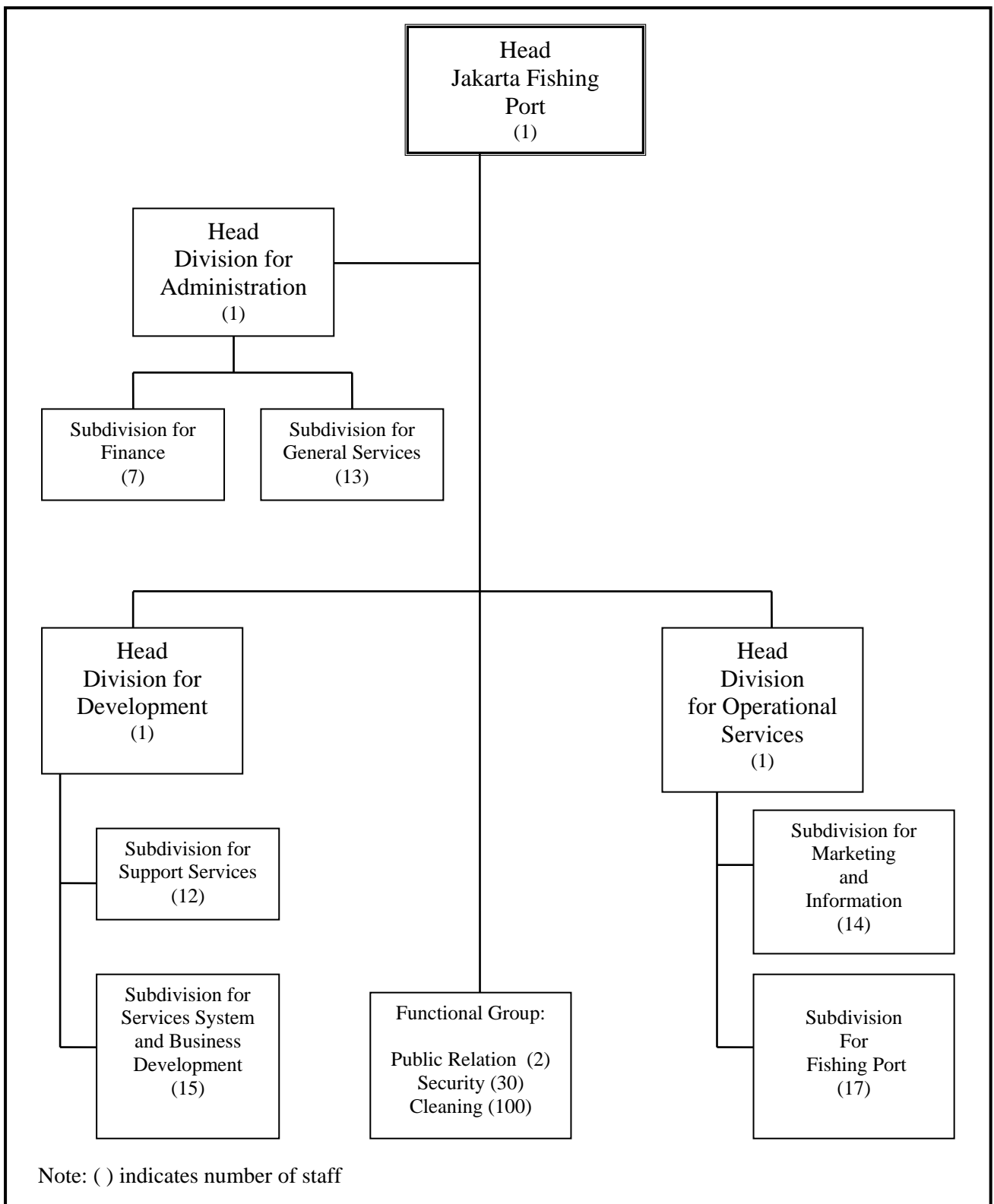
4.10 PROFILES OF FISH BUYERS IN MUARA BARU AND MUARA ANGKE



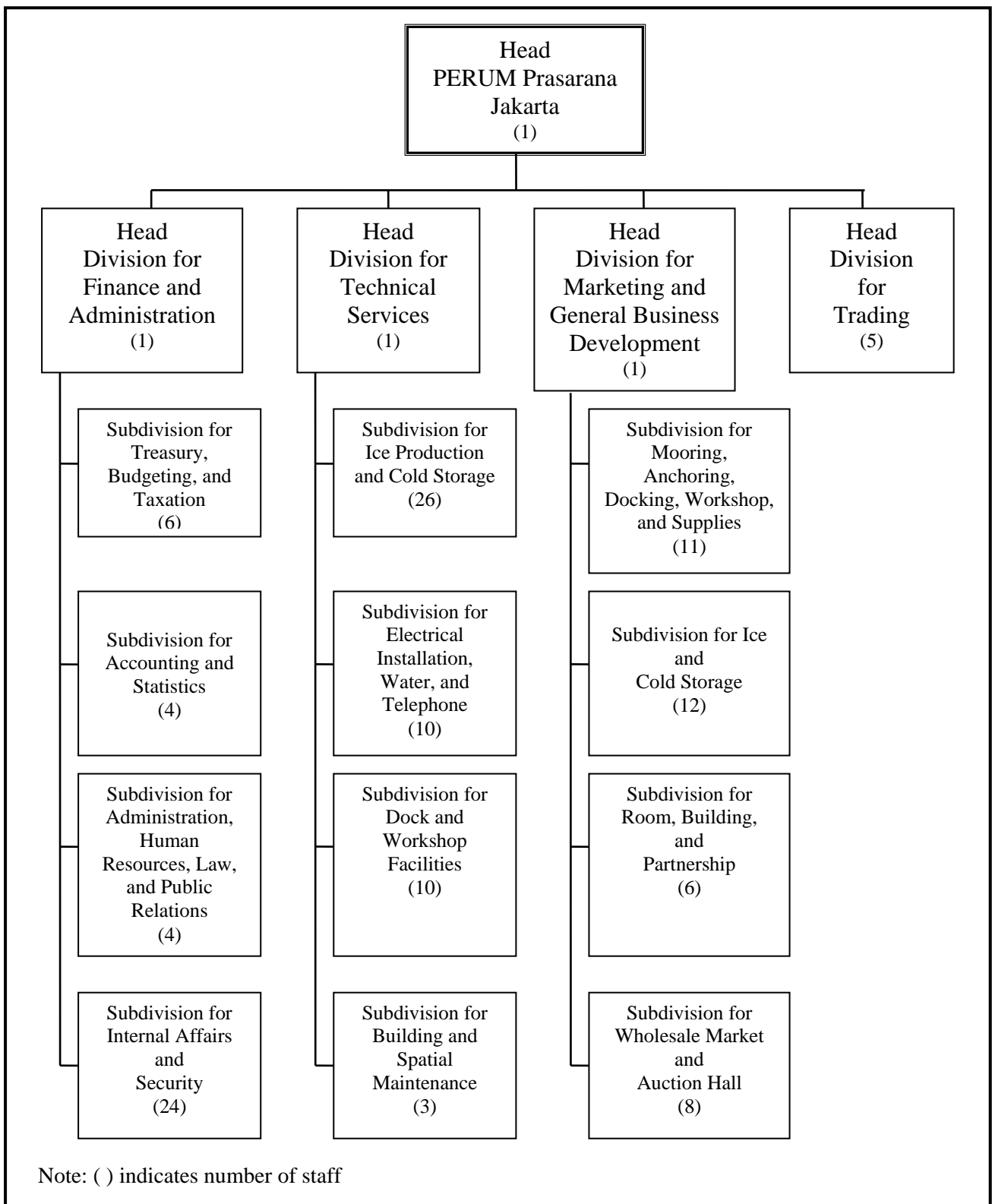
APPENDIX 5

Organization Charts and Financial Status of UPT-PPSJ and PERUM PPS

ORGANIZATIONAL STRUCTURE OF JAKARTA FISHING PORT



ORGANIZATIONAL STRUCTURE OF PERUM PPS, JAKARTA BRANCH



Revenues and Operation and Maintenance Costs – PERUM PPS

Item	2008		2009		2010	
	Actual Rph million	Actual as % of planned	Actual Rph million	Actual as % of planned	Actual Rph million	Actual as % of planned
Revenues from operations						
1. Cold storage services						
(i) Fish storage	2,204.879	70%	2,900.500	112%	2,697.996	91%
(ii) Fish freezer	491.335	64%	255.756	33%	113.161	41%
Subtotal revenues from cold storage services	2,696.213	69%	3,156.255	94%	2,811.157	87%
2. Buildings and land use						
(i) Buildings						
(a) East quaywall						
1) Tuna landing center						
i) Group I						
a) Lease	1,099.233	106%	966.897	91%	1,110.191	96%
b) Building lease	97.656	57%	177.263	100%	191.519	95%
ii) Group II	193.500	111%	181.131	104%	197.367	117%
iii) Group III						
a) Workshops	175.125	124%	190.382	98%	194.520	120%
(b) West quaywall						
1) Ship landing facilities	313.271	105%	348.351	97%	361.855	101%
(c) Cold storage area						
1) Cold storage A						
i) Fish processing	75.078	117%	238.115	370%	101.423	150%
ii) Annex building	-	0%		0%		0%
iii) Packing	12.881	745%	15.587	902%	15.593	143%
2) Cold storage B						
i) Fish processing	381.141	99%	296.193	77%	448.200	68%
ii) Annex building	-	0%		0%		0%
(d) Shop area						
1) Muara Baru Center	504.290	109%	356.440	77%	208.317	53%
2) Additional building			38.585	179%	21.600	100%
(e) Office area	-		171.473	90%	214.718	93%
(f) Auction hall						
1) Office area	12.150	75%		0%		0%
2) Auction floors	261.792	96%	267.699	98%	264.487	61%
(g) Warehouses			42.455	179%	45.352	86%
(h) Wholesale market						
1) Fish selling	534.595	134%	548.595	101%	694.815	102%
2) Packing	120.698	101%	124.900	103%	146.333	103%
3) Canteen/kiosk	246.335	159%	290.556	101%	353.001	116%
4) Ice storage	1.563	54%	21.363	593%	24.116	96%
5) WSM yard	46.050	139%	50.188	125%	64.617	145%
6) Others					281.417	
Subtotal revenues from buildings	4,075.357	102%	4,326.172	97%	4,939.440	96%
(ii) Land use						
(a) Development charge	731.551	147%	1,047.306	164%	1,380.298	140%
(b) SPP	919.963	199%	837.555	92%	898.333	105%
(c) Quaywall yard	201.912	168%	292.471	183%	302.259	111%
(d) WSM	5.350	102%	12.867	123%	4.698	37%
(e) Land use right	8.100	110%	6.075	68%	8.424	94%
(f) Others (Administration)					671.418	
Subtotal revenues from land use	1,866.877	171%	2,196.274	127%	3,265.429	153%
Subtotal revenues from buildings and land use	5,942.234	117%	6,522.447	105%	8,204.869	112%
3. Electricity	10,384.136	151%	11,649.123	104%	13,788.296	112%

(continued...)

Revenues and Operation and Maintenance Costs – PERUM PPS (...continuation)

Item	2008		2009		2010	
	Actual Rph million	Actual as % of planned	Actual Rph million	Actual as % of planned	Actual Rph million	Actual as % of planned
4. Water services						
(i) Fresh water						
(ii) Industrial	5,145.255	100%	3,397.977	43%	3,131.678	43%
(iii) Reservoirs	82.898	98%	38.717	30%	43.915	56%
(iv) Water supply cooperation	100.539	81%	112.495	92%	158.476	200%
Subtotal revenues from water services	5,328.691	78%	3,549.189	44%	3,334.068	45%
5. Telephone	973.259	88%	787.541	79%	696.158	85%
6. Other revenues	440.158	1862%	709.625	2957%	135.939	284%
7. Ice services	3,300.033	73%	4,313.598	94%	4,387.556	87%
8. Berthing charges						
(i) <10 GT	0.037	56%	0.113	114%	0.003	1%
(ii) 11 - 20 GT	0.193	58%	0.209	53%	0.088	33%
(iii) 21 - 30 GT	4.505	123%	5.015	123%	3.375	68%
(iv) >30 GT, tbt Dmg Brt	4,274.684	132%	4,415.807	137%	5,204.410	130%
Subtotal revenues from berthing charges	4,279.418	132%	4,421.144	136%	5,207.875	130%
9. Logistic services	792.488	13%	598.108	79%	585.383	111%
10. Workshop and dockyard						
(i) Workshop	221.141	102%	250.625	111%	284.764	122%
(ii) Slipway	1,134.495	88%	1,123.146	87%	1,251.498	98%
Subtotal revenues from workshop and dockyard	1,355.636	90%	1,373.771	91%	1,536.261	102%
11. Fish selling	3,721.779		8,730.814	146%	10,695.430	
Total revenues	39,214.047	100%	45,811.616	99%	51,382.994	94%
Operation and maintenance costs						
1. Directorate for Development						
(i) Materials, tools, and equipment	8,551.986	84%	12,666.196	102%	13,792.411	74%
(ii) Salaries, honoraria, wages, and employees benefits	2,006.250	84%	2,043.212	100%	2,101.846	131%
(iii) Office operational expenses	398.705	97%	374.758	94%	215.605	55%
(iv) Electricity	7,772.951	142%	8,019.383	94%	9,746.349	107%
(v) Telephone	804.060	91%	660.367	79%	590.551	92%
Subtotal O&M costs Division for Marketing and General Business Development	19,533.953	101%	23,763.916	98%	26,446.762	87%
2. Directorate for Engineering						
(i) Salaries, honoraria, wages, and employees benefits	2,036.774	100%	2,301.215	92%	2,447.736	99%
(ii) Office operational expenses	46.951	196%	49.300	101%	52.684	139%
(iii) Electricity	6,473.869	127%	7,155.052	116%	6,586.997	90%
(iv) Water	2,043.590	174%	691.686	45%	1,380.631	63%
(v) Maintenance cost						
(a) Building rental	25.539	43%	48.278		18.152	
(b) Machinery and equipment	549.449	94%	847.902	70%	648.612	73%
(c) Hauling equipment	88.746	148%	10.335	17%	64.842	216%
(d) Inventories	10.376		79.441		68.425	
(e) Depreciation cost of fixed assets	2,438.247	98%	2,258.191	88%	2,314.167	96%
Subtotal O&M costs Division for Technical Services	13,713.540	119%	13,441.399	95%	13,582.246	88%
3. Directorate for Finance and Administration						
(i) Salaries, honoraria, wages, and employees benefits	2,021.690	104%	2,057.338	87%	2,197.438	116%
(ii) Office operational expenses	140.219	113%	133.614	114%	138.939	101%
(iii) Electricity	182.526	84%	205.149	74%	226.253	86%
(iv) Water	133.155	446%	139.731	93%	370.117	114%
(v) Telephone	52.513	80%	46.726	78%	58.266	97%
(vi) Operation of vehicles	483.894	117%	394.420	78%	428.255	98%
(vii) Other operational costs	739.877	113%	831.527	119%	940.452	119%
(viii) Maintenance cost	69.107	53%	95.334	61%	167.599	72%
(ix) Depreciation cost of fixed assets	166.997	84%	99.028	50%	129.888	99%
Subtotal O&M costs Division for Finance and Administration	3,989.979	106%	4,002.867	88%	4,657.205	109%
Total operation and maintenance costs	37,237.472	108%	41,208.182	96%	44,686.213	89%
NET Revenue from operations	1,976.575	44%	4,603.434	141%	6,696.780	146%
Add: Non-operational revenue						
(i) Interest and services	32.210	89%	49.560	138%	47.573	113%
(ii) Others	446.202	1859%	419.549	1748%	769.261	2849%
Less: Non-operational costs	78.754	12%	260.359	723%	722.033	1719%
NET Revenue from operations and other sources	2,376.233	62%	4,812.183	147%	6,791.582	148%

PERUM TARIFF SURVEY RESULTS

Item		As of April 29, 2009 (Rph or %)	As of May 7, 2010 (Rph or %)	
I. MOORING/ANCHORING				
II. LAND				
1. Management rights (HPL) and use rights (HP)				
	(i) development charge		13,895	/m ² /year + 0.5% tax (NJOP) ^a
	(ii) donation for infrastructure maintenance	plus	2,779	/m ² /year + 0.1% tax (NJOP)
2. Right to build	(i) development charge	0.10%	0.10%	of NJOP (m ² /year)
	(ii) donation for infrastructure maintenance	0.10%	0.10%	of NJOP (m ² /year)
3. Administration cost for acquisition, renewal and transfer of land lease rights				
3.1 Acquisition of land lease rights	(i) lease with HPL and HP		0.40%	of NJOP (m ² /year)
	(ii) lease with rights to build		0.50%	of NJOP (m ² /year)
3.2 Renewal of land lease rights	(i) lease with HPL and HP		0.25%	of NJOP (m ² /year)
	(ii) lease with rights to build		0.35%	of NJOP (m ² /year)
3.3 Transfer of land lease rights	(i) lease with HPL and HP		0.40%	of NJOP (m ² /year)
	(ii) lease with rights to build		0.50%	of NJOP (m ² /year)
III. DEVELOPED SPACE				
1. East wharf area	(i) tuna handling area	(a) Kelompok I	18,000	/m ² /month
		(b) Kelompok II	15,000	15,000 /m ² /month
		(c) Kelompok III	12,500	12,500 /m ² /month
2. Workshop			22,000	22,000 /m ² /month
3. Canteen			15,000	15,000 /m ² /month
4. West wharf area	(i) boat handling area		15,000	15,000 /m ² /month
	(ii) canteen		15,000	15,000 /m ² /month
5. Cold storage	(i) cold storage A	(a) fish processing area	15,000	15,000 /m ² /month
		(b) fish packing area	20,000	20,000 /unit/24 hours
	(ii) cold storage B	(a) fish processing and storage area	20,000	20,000 /m ² /month
		(b) additional development	15,000	15,000 /m ² /month
	(iii) cold storage			13,000 /ton/day
6. Fishermen activities support area			15,000	15,000 /m ² /month
7. Office			22,000	22,000 /m ² /month
8. Fish customers place	(i) TPI office		12,000	12,000 /m ² /month
	(ii) TPI		12,000	12,000 /m ² /month
9. Wholesale market	(i) wholesale market place		2,500/unit/yr	77,500 /unit/month (2 x 2.5m)
	(ii) fish packing place		7,000/unit/yr	217,000 /unit/month (5 x 6m)
	(iii) warung/kiosk		10,000	10,000 /m ² /month
	(iv) office		10,000	10,000 /m ² /month
	(v) ice depot		25,000	25,000 /unit/month (2.5 x 4m)
10. Administrative cost for advance payment of building rent			2.00%	2.00% for each rental payment amount
11. Lease extension administration fee			1.50%	1.50% of annual lease amount
12. Lease right transfer administration fee (change name)			2.00%	2.00% of annual lease amount
IV. YARD				
1. East wharf area			5,000	5,000 /m ² /year
2. Bongkar Muat place	(i) placement of container 20'		100,000	100,000 /day
	(ii) placement of container 40'		150,000	150,000 /day
3. Wholesale market	(i) placement of containers (up to 60kg)		1,500	1,500 /container/day
	(ii) loading/unloading terminal	(a) truck	3,000	3,000 /time of action
		(b) pickup	2,000	2,000 /time of action
		(c) 3-wheel vehicle	1,000	1,000 /time of action
		(d) cart	500	500 /time of action
	(iii) fish packing		10,000	10,000 /unit/day

(continued...)

PERUM TARIFF SURVEY RESULTS (...continuation)

Item			As of April 29, 2009 (Rph or %)	As of May 7, 2010 (Rph or %)	
V. WORKSHOP					
1. Work service and boat full maintenance	(i) scrap wash service	(a) <50GT	220,000	220,000	/boat
		(b) 50 - 100 GT	400,000	400,000	/boat
		(c) 100 - 200 GT	450,000	450,000	/boat
	(ii) hull painting service	(a) <50GT	175,000	175,000	/boat
		(b) 50 - 100 GT	350,000	350,000	/boat
		(c) 100 - 200 GT	400,000	400,000	/boat
	(iii)				
	(iii) brushing service		6,000	6,000	/m ²
	(iv) installation of zinc anode	(a) 4 - 8 kg	30,000	30,000	/kg
		(b) 9kg or more	35,000	35,000	/kg
(v) Installation service		25,000	25,000	/kg	
2. Propulsion and steering work service	(i) propeller unloading		25,000	25,000	/inch-diameter x no. of leaf
	(ii) propeller blade unloading		175,000	175,000	/inch-diameter x no. of leaf
	(iii) bearing unloading		75,000	75,000	/inch-diameter x no. of leaf
	(iv) steering leaves unloading	(a) <1.5 m	220,000	220,000	
(b) < 1.5 m		350,000	350,000		
3. Others	(i) lighting facility & slipway cleaning		300,000	300,000	/packet
	(ii) electric facility for work		40,000	40,000	/day
4. Underwater work coordination service			20%	20%	x total work cost
VI. SHIPYARD					
1) Slipway up & down			35,000	35,000	/GT/boat
2) Slipway lease			10%	10%	of slipway up & down
VII. COLD STORAGE					
1. Cold storage			7,000	7,000	/box pallet/day
2. Air blast freezer			500	500	/kg/24 hours
			50	50	/kg/hour
VIII. ICE PRODUCTION					
1. 50kg block			5,300	5,800	/block
2. 60kg block			6,360	6,360	/block
IX. FRESHWATER					
1. Selling	(i) freshwater		16,000	18,000	/m ³
	(ii) collecting water		4,500	4,500	/m ³
2. Buying	(i) PT. CNE			13,000	/m ³
	(ii) PT. TSA			13,000	/m ³
	(iii) PDAM PALYJA				
X. MATERIALS					
XI. ELECTRICITY					
			20%	20%	of PLN tariff
XII. TELEPHONE					
			20%		based on telecommunication tariff and exploitation cost
				75,000	/hour after 4 hours
XIII. INSTALLATION CONTINUATION					
XIII. PARTNERSHIP BUSINESS					
1. Live fish			15	15	/piece
2. Frozen fish			50	50	/kg
3. BBM	(i) SPBB/SPBU		0.14%	0.14%	of selling price
	(ii) non SPBB		0.24%	0.24%	of selling price
4. Lubricant oil			75	75	/liter
5. Ice			400		/block
5. Freshwater from outside of fishing port			2,000	2,000	/m ³
6. Labour	(i) cold storage		15	15	/kg
	(ii) fish handling site		15	15	/kg

³ Sale value of tax object.

APPENDIX 6

Facility Scale Calculation

APPENDIX 6: FACILITIES SCALE DETERMINATION

6-1. BUILDING AND FLOOR AREA

A-6-1

Required Facilities		Dimension (m, m2)		Quantity	Total Building	Total Floor	Comments & Specification	
A	Fish Trading & Marketing Center (PPPI)	Width	Depth		Area (m2)	Area (m2)		
1	Wholesale Market	170.0	126.0	1	22,064.4	24,125.4		
a	Fish Unloading Area	Fish Unloading Deck (including waste depots)	170.0	3.0	1	Ground Floor	510.0	Coated Floor (easy to clean-up), Clean water supply, Drainage, Illumination, Power supply
		Fish Handling Hall (Future)	170.0	7.5	1	Ground Floor	1,275.0	Semi-enclosed (Future), Coated Floor (easy to clean-up), Clean water supply, Drainage, Illumination, Power supply
b	Fish Verification & Transaction Area	Fish Trading hall (Future)	170.0	12.0	1	Ground Floor	2,040.0	Enclosed (Future), Coated Floor (easy to clean-up), Boots washing pools, Washbasins, Clean water supply, drainage, Illumination, Power supply, Air-conditioning (Future)
c	Fish Organoleptic Laboratory							Floor area for the laboratory is lay-outed in the "1-b" or "1-g"
d	Transit Area	Transit Corridor	170.0	7.5	1	Ground Floor	1,275.0	Coated Floor (easy to clean-up), Clean water supply, Drainage, Illumination, Power supply
e	Market hall	Market Hall (including Transit Pass)	170.0	63.0	1	Ground Floor	10,710.0	Semi-enclosed, Coated Floor (easy to clean-up), Boots washing pools, Washbasins, Clean water supply, Drainage, Illumination
	Saling Compartment for Wholesaler	3.5 x 3.5 metres	3.5	3.5	480			Existing compartment=2.5 x 2m, Sales space, Fish storage space, Accountants space, Balances; Efficiency of fish sales by area is estimated almost 45-50kg/m2. It will be assumed to increase up to 60kg/m2, Total Volume of fish dealt in the Wholesale Market is estimated 320ton/day at 2025
	Compartment Unit	8-10 compartment / unit						Currently 992 compartments for 390 wholesalers (based on registration, That is said to be 150 or more), Some compartments are used for fish processing, store area of insulation boxes are not used and food stand, So the actual sales compartments are assumed 80-85% of total
	Unit Arrangement	10 x 6 units or 8 x 6 units						
	Total Saling Compartments	480 compartments						
f	Packing Area	Fish Packing Deck (including slope to the parking lot and carrier, Ice, waste depots)	170.0	33.0	1	Ground Floor	5,610.0	Coated Floor (easy to clean-up), Clean water supply, Drainage, Illumination, Power supply, Power supply
g	Management Offices	for UPT, Perum, DKI, MMM, TKBMII (including Stairs, Corridors & WCs)	65.5	12.0	1	Second Floor	786.0	Desalinated clean water supply, Drainage, Illuminations, Power supply
h	Offices & Resting Stations for Wholesalers	(including Stairs, Corridors & WCs)	170.0	7.5	1	Second Floor	1,275.0	Desalinated clean water supply, Drainage, Illuminations, Power supply
		50 compartments	4.5	2.7	12.15			Currently Just 4 offices are registered, But Accutually 15 compartments are assumed to be used for Offices and/or Rest stations, Since the wholesalemarket is the night market, latent demand for offces served as resting stations seems to increase, This space may be divided into almost 24.
j	Ice Supply Stations		6.0	15.0	2	Ground Floor	180.0	Crashed block ice will be provided by the container; Temporary stock yard for ice, Ice crushers, Desalinated clean water supply, Drainage, Illuminations, Power supply
k	Fish Transit Deck		6.0	16.5	2	Ground Floor	198.0	Desalinated Clean Water will not be provided to the market hall, Then these spaces are provided as Fish Transit Deck, In case it would be seemed to be necessary, the water will be provided by the container; Desalinated clean water supply, Drainage, Illuminations, Power supply
	Ice supply Decks		6.0	6.9	2	Ground Floor	82.8	
m	Electric Machine Room							Included in some space in the Building
n	Public Toilets		6.0	11.1	4	Ground Floor	266.4	Required area shall be re-calculated according to the international standard; Desalinated clean water supply, Drainage, Illuminations, Power supply
	Corridors		6.0	8.4	2	Ground Floor	100.8	
o	Entrance Post		7.2	4.5	1	Annex	32.4	
**	Sub Total						22,924.8	24,985.8
	Base parts of Pedestrian Walk	Just Roof Top	69.0	6.0	2			828.0

B Fish Supply Buffer Ceter							
1	Cold Storage Building		217.5				Desalinated clean water supply, Drainage, Illuminations, Power supply
	Cold Storage unit	7.5 x10.5 metres	7.5	10.5	29	Ground Floor	2,283.8
	Unit	29 units		78.8			
	Management Offices	(including Stairs,Atrium, Corridors & WCs)	7.5	7.5	29	Second Floor	1,631.3
	* Sub-sub Total						2,283.8 3,915.0
2	Fish Processing Units		112.5				Desalinated clean water supply, Drainage, Illuminations, Power supply, Mandatory installation of grease traps to the users
	Processing unit		4.5	10.5	25	Ground Floor	1,181.3
	Unit	25 units		47.3			
	Management Offices	(including Stairs,Atrium, Corridors, Balcyns & WCs)	4.5	10.5	25	Second Floor	1,181.3
	* Sub-sub Total						1,181.3 2,362.5
3	Storage Building		36.0				These spaces are constructed with Fish Processing Units in the same building; Desalinated clean water supply, Drainage, Illuminations, Power supply
	Storage unit	4.5 x10.5 metres	4.5	10.5	8	Ground Floor	378.0
	Unit	8 units		47.3			
	Management Offices	(including Stairs,Atrium, Corridors, Balcyns & WCs)	4.5	10.5	8	Second Floor	378.0
	* Sub-sub Total						378.0 756.0
	** Sub total						3,843.0 7,033.5
	Pedestrian Walk						
			265.0	3.0	1		795.0
			35.5	3.0	1		106.5
			46.0	3.0	1		138.0
			148.0	3.0	1		444.0
	Pedestrian Walk						1,483.5
C Canteens and Kiosks Bldg.							
1	Kiosks and Canteens, Food stands		127.5	27.0			3,442.5 6,885.0
	Compartment	3.75 x7.5 metres	7.50	3.75	48	Ground Floor	1,350.0
	Compartment Unit	100 compartment / unit	7.50	3.75	48	Second Floor	1,350.0
	Food stand unit		2.1	2.1	28	Ground Floor	123.5
	Food stand unit		2.1	2.1	32	Second Floor	141.1
							Installed on the pedestrian deck
2	Public Toilets						135.0 270.0
	Unit		6.0	11.25	2	Ground Floor	135.0
			6.0	11.25	2	Second Floor	135.0
3	Pedestrian Walk	including stairs				Ground Floor	1,834.0
	Pedestrian Walk	including stairs				Second Floor	1,816.4
	** Sub Total						3,442.5 6,885.0
	Pedestrian Walk		22.0	3.0	1		66.0

Pedestrian deck area is not included in these caliculations

D	Seafood Plaza								These spaces may be layouted as double-decked building
1	Fish Shops	including guest toilet	85.5	18.0	1	1,539.0	1,539.0		Including Passage for consumers, Now under considerations; Desalinated clean water supply, Drainage, Illuminations, Power supply
		Retail Unit	6.0	4.5	12	Ground Floor	324.00		
		Unit Arrangement	3 x 2x 2						
		Storages	3.0	1.2	12	Ground Floor	43.20		
		Offices and Resting Stations	3.0	3.3	12	Ground Floor	118.80		
		Event Square	22.5	18.0	1		405.00		
2	Seafood Restaurants	Restaurant unit	31.5	18.0	2	Second Floor	1,417.5		Including guest toilet and outside corridor in this calculation; Desalinated clean water supply, Drainage, Illuminations, Power supply
3	Public Toilet		3.6	3.6	3.142	Ground Floor	40.7		This unit is layouted under the pedestrian deck
**	Sub Total						1,579.7	2,997.2	Pedestrian deck area is not included in these calculations
	Pedestrian Walk								
		Restaurant's Balcony	6.0	6.0	36			36.0	
		Pedestrian Walk	21.0	3.0	1			63.0	
		Public Toilet's Roof	3.6	3.6	3	Ground Floor		40.7	
		Sub Total of Pedestrian Walk						139.7	
***	Total						31,790.0	41,901.5	
E	Utility Stations								
1	Clean Water Supply Station								
a	Desalinated Clean Water Production Plant		12.0	22.5	1		270.0	270.0	For 600m ³ /day production plant; including storage and office
b	Sterilized Seawater Production Plant						0.0		
c	Water Reservoir for Desalinated Clean Water		25.2	25.2	3		1,905.1		1 days capacity
d	Water Reservoir for Clean Seawater						0.0		
e	Elevated Water Tank (Water Supply Tower)		6.3	6.3	3.6		142.9		1/10~1/15 of the Capacity of Reservoirs
*	Sub-sub Total						2,318.0	270.0	
2	Sewage Treatment Plant								
			10.5	4.5	1		47.3	47.3	
		Area	63.0	22.5	1		1,417.5		
*	Sub-sub Total							47.3	
3	Electric Sub-Station		10.5	15.0	1		157.5	157.5	
**	Sub Total							474.8	
***	Sum Total						31,790.0	42,376.3	

E	Traffic Facilities								
0	Inner road		240.0	12.0	1	2,880.0		inside the Access road	
			198.0	12.0	1	2,376.0			
			197.5	7.5	2	2,962.5			
			205.5	12.0	1	2,466.0			
			259.0	12.0	1	3,108.0			
			46.0	12.0	1	552.0			
	* Sub Sub Total					14,344.5			
S	Inner road 2		69.0	12.0	1	828.0		The other saide of the Access road	
			123.0	12.0	1	1,476.0			
			86.5	12.0	1	1,038.0			
	* Sub Sub Total					3,342.0			
S	Access road		229.0	12.0	1	2,748.0		in the reclamation area only	
**	Sub Total					20,434.5			
1	Truck Berth for Unloading Trucks		170.0	12.0	1	2,040.0		30m width of this truck berth is supplied for allowance	
	Unit	for 7.5tons trucks	4.0	12.0	40			Almost 2.5 tons volume of fish is transported by each truck, Total numbers of incoming trucks is assumed to be almost 160, The truck berth can be used by 4 rotations, Each rotation is estimated in 30 minutes	
2	Parking Lot for Unloading Trucks		0.0	12.0	1	0.0		Same as above	
	Unit	for 7.5tons trucks	4.0	12.0	40			Wating time is estimated less than 30 minutes	
3	Parking Lot for Offloading Trucks		197.5	21.0	1	4,147.5			
		for 100trucks	190.5	21.0	1	4,000.5			
		for 98trucks	157.5	10.5	1	1,653.8			
		for 40trucks	3.5	10.5	36.75				
	238 units// UnitUnit	averagely for 4.5tons trucks							
	* Sub-sub Total					9,801.8			
4	Truck Berth for Fish Supply Buffer Center		366.0	12.0	1	4,392.0			
5	Parking Lot for Workers Moter-cycles		37.0	14.00	2	1,036.0		There were 571 motercycles parking in the existing wholesale market, It is estimated to increase into almost 840, These can be accomodated together in the Kiosk's parking lot, necessary area for motorcycle is almost 1.8m2 each	
6	Parking Lot for Management offices		9.6	10.5	2	201.6		for 5cars x 2	
7	Parking Lot for Kiosks Area		40.0	5.0	1	200.0			
			27.5	15.0	1	411.8			
	* Sub-sub Total					611.8			
**	Sub Total					18,083.1			
***	Total					38,517.6			
	Total of Pedestrian Walk						2,517.2		

6-2. ICE REQUIREMENT

(A). Account for ice used in 2009						
<u>Base of calculation</u>						
The amount of ice supplied by PERUM to PPI/JFP:			24,236 ton			
(1) Current practice in use of ice						
Group of fish	Volume of fish (ton)	In the PPI/JFP premises		During distribution		Total
		Ice/fish ratio (%)	Volume of ice (ton)	Ice/fish ratio (%)	Volume of ice (ton)	
- Frozen marine fish	8,184	0	0	16	1,309	1,309
- Fresh water fish	19,753	10	1,975	16	3,160	5,136
- Fresh marine fish	43,106	25	10,777	16	6,897	17,673
Total	71,043	-	12,752	-	11,367	24,119
Note: Total application of ice per kg fish is 29.7%.						
(1) Suggested amount of ice application						
Group of fish	Volume of fish (ton)	In the PPI/JFP premises		During distribution		Total
		Ice/fish ratio (%)	Volume of ice (ton)	Ice/fish ratio (%)	Volume of ice (ton)	
- Frozen marine fish	8,184	0	0	50	4,092	4,092
- Fresh water fish	19,753	10	1,975	50	9,877	11,852
- Fresh marine fish	43,106	25	10,777	50	21,553	32,330
Total	71,043	-	12,752	-	35,522	48,273
Note: In case of an ideal practice of fish handling, an additional 24,037 ton ice is required.						
(B). Account for ice used in 2025						
(1). Under the current practice						
Group of fish	Volume of fish (ton)	In the PPI/JFP premises		During distribution		Total
		Ice/fish ratio (%)	Volume of ice (ton)	Ice/fish ratio (%)	Volume of ice (ton)	
- Frozen marine fish	24,456	0	0	16	3,913	3,913
- Fresh water fish	46,148	10	4,615	16	7,384	11,998
- Fresh marine fish	44,886	25	11,222	16	7,182	18,403
Total	115,490	-	15,836	-	18,478	34,315
Note: 10,079 ton ice is short.						
(2). Suggested amount of ice application						
Group of fish	Volume of fish (ton)	In the PPI/JFP premises		During distribution		Total
		Ice/fish ratio (%)	Volume of ice (ton)	Ice/fish ratio (%)	Volume of ice (ton)	
- Frozen marine fish	24,456	0	0	50	12,228	12,228
- Fresh water fish	46,148	15	6,922	50	23,074	29,996
- Fresh marine fish	44,886	25	11,222	50	22,443	33,665
Total	115,490	-	18,144	-	57,745	75,889
Note: 51,653 ton additional ice is required.						

(3). In case of employing an improved fish handling method in use of insulated fish boxes (2025)						
Group of fish	Volume of fish (ton)	In the PPI/JFP premises		During distribution		Total
		Ice/fish ratio (%)	Volume of ice (ton)	Ice/fish ratio (%)	Volume of ice (ton)	
- Frozen marine fish	24,456	0	0	15	3,668	3,668
- Fresh water fish	46,148	10	4,615	15	6,922	11,537
- Fresh marine fish	44,886	15	6,733	15	6,733	13,466
Total	115,490	-	11,348	-	17,324	28,671

Note: 4,435 ton ice is short.

(A) Classification of fish supplied to PPI/JFP in 2009

Origin of fish supply	Group of fish (ton)			Total	Remarks
	Frozen marine fish	Fresh water fish	Fresh marine fish		
1. Fish brought in overland	924	19,753	39,476	60,153	Fesh water fish= milkfish +inland fish
2. Fish landed	7,260	0	3,630	10,890	Ratio of frozen fish: estimated by UPT/JFP
Total	8,184	19,753	43,106	71,043	

(B) Classification of fish supplied to PPI/JFP in 2025

Origin of fish supply	Group of fish (ton)			Total	Remarks
	Frozen marine fish	Fresh water fish	Fresh marine fish		
1. Fish brought in overland	11,234	46,148	43,417	100,799	Ref. projected figure
2. Fish landed	13,222	0	1,469	14,691	Projected figure
Total	24,456	46,148	44,886	115,490	

6-3. COLD STORAGE CAPACITY

Fish to be stored at peak month in 2009 (except freshwater fish and milkfish) 2,848 MT

	(Unit: MT)												Total	Average
Year 2009	Jan.	Feb.	Mar.	Apr.	May	June	July	Aug.	Sep.	Oct.	Nov.	Dec.		
Fish brought to JFP by land	6,058.58	6,844.32	8,565.99	7,265.41	7,521.00	10,263.64	8,372.68	7,402.08	5,282.67	7,657.23	6,444.96	7,458.21	89,136.77	7,428.06
Fish brought to PPI	4,088.57	4,618.82	5,780.67	4,902.98	5,075.47	6,926.31	5,650.21	4,995.21	3,564.95	5,167.40	4,349.31	5,033.09	60,153.00	5,012.75
Except Bandeng & FW fish	2,583.86	2,668.72	3,859.81	2,777.91	2,589.48	4,425.52	3,478.44	3,045.75	2,194.65	3,393.79	2,551.11	3,230.86	36,799.91	3,066.66
Fish landed from fishing boats and distributed to PPI	518.63	599.25	2,438.00	707.89	1,108.29	828.82	1,249.63	1,102.39	904.53	1,097.48	1,232.67	939.92	10,889.00	
Total	3,102.49	3,267.97	6,297.81	3,485.81	3,697.77	5,254.34	4,728.07	4,148.15	3,099.18	4,491.27	3,783.78	4,170.79	49,527.41	4,127.28
Excess volume from monthly average	(1,024.80)	(859.32)	2,170.52	(641.48)	(429.51)	1,127.06	600.79	20.86	(1,028.10)	363.98	(343.51)	43.50	(0.00)	(0.00)
Volume to be stored in cold storage	859.32	0.00	2,170.52	1,529.04	1,099.53	2,226.59	2,827.37	2,848.24	1,820.14	2,184.12	1,840.61	1,884.12	21,289.60	1,774.13

Increase of capture fishery production from 2009 to 2025 1.35 times

Fish to be stored at peak month in 2025 (except freshwater fish and milkfish) 3,845 MT

Capacity and operating efficiency of the existing cold storages:

	Storage Capacity (Tons)	Occupancy at peak month (2009)	Actual Fish Holding Volume at peak month (2009)	Max. Occupancy	Max. Fish Holding Volume at peak month (MT)
Private (around market)	1,700	50% (estimated)	850 (estimated)	75%	1,275
PERUM	1,800	44.3%	798	75%	1,350
Total	3,500				2,625

Required Capacity of Cold Storages 1,220 MT (3,845 MT – 2,625 MT)

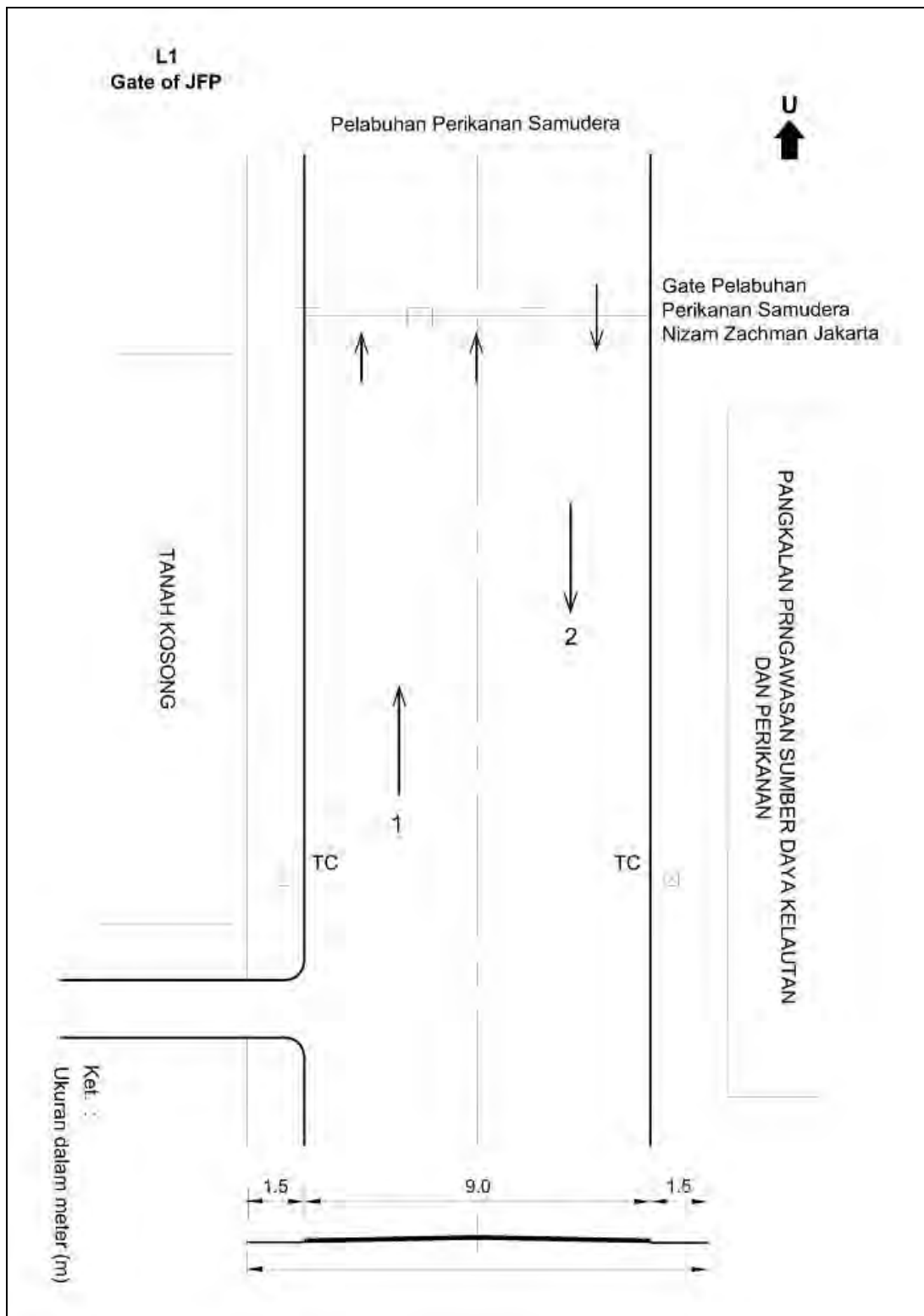
6-4. FISH PROCESSING UNITS (UPI)

	Year 2009	Year 2025
Estimated volume of raw materials for processing	1,752 MT/year (frozen large pelagic)	2,474 MT/year (frozen large pelagic)
Estimated volume of processed products (fillets)	1,489 MT/year (1,752 MT x 85%)	2,103 MT/year (2,474 MT x 85%)
Estimated volume of fish waste	263 MT/year (1,752 MT x 15%)	371 MT/year (2,474 MT x 15%)
Fish processing units (UPI)	Inside of PPI: 510 m ² (15 units) Around PPI: 200 m ² (2 units), Total: 710 m ²	27 units (35 m ² /unit x 24 units, 100 m ² /unit x 3 units), Total 1,140 m ²

APPENDIX 7

Traffic Survey Results & Forecast

Location: Gate at Jakarta Fishing Port



Traffic Volume by Time Zone (Weekday Average Volume, Vehicle/Day)

FORMULIR PERHITUNGAN LALU-LINTAS

Direction : 1

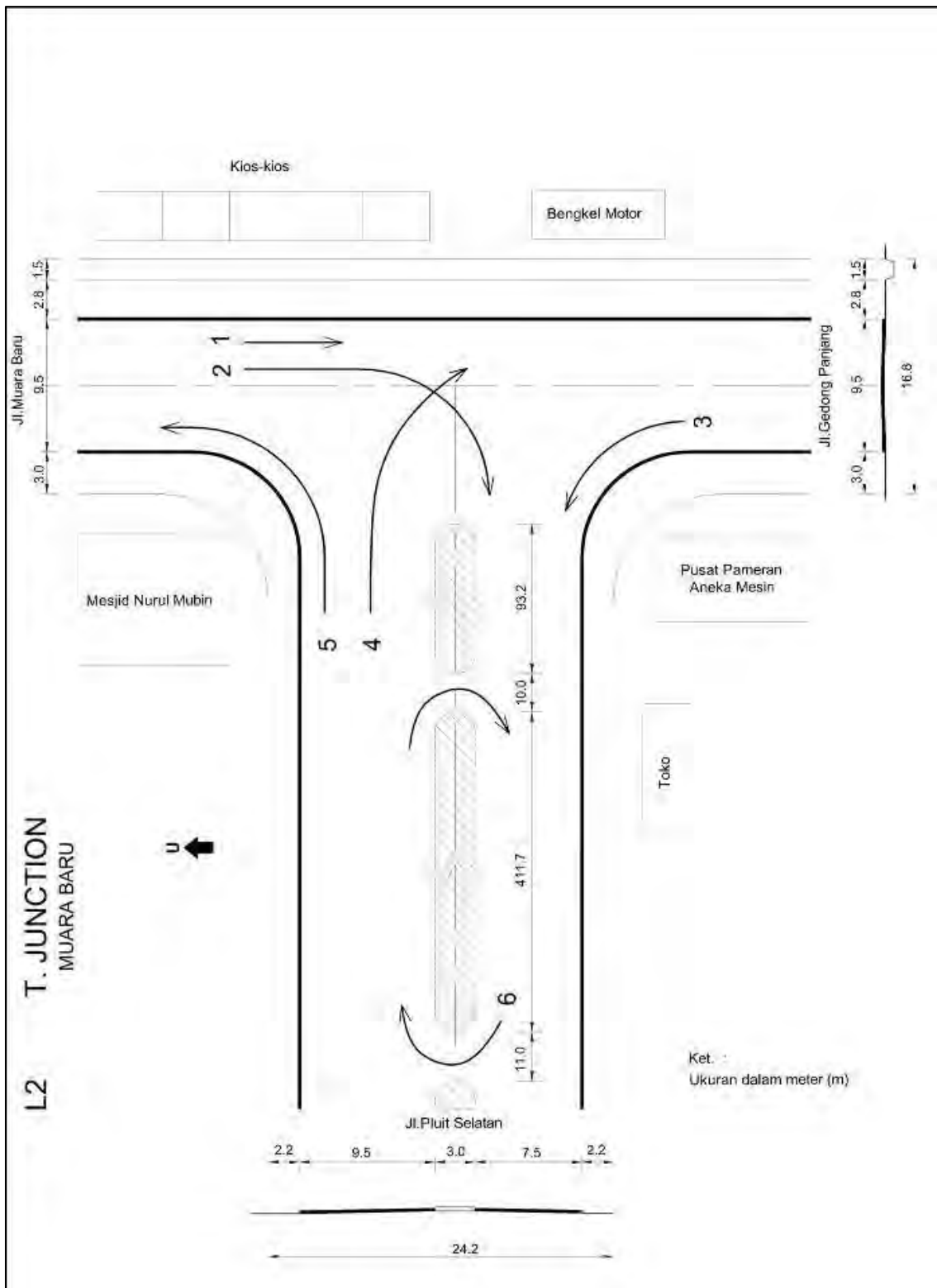
Pukul	1 Sepeda Motor, Scooter/Vespa	2 Sedan, Jeep, Kijang, Taxi, Stalion-Wagon	3 Bis Kecil, (Mikrolet, Angkot) Elf	4 Bis Sedang	5 Bis Besar	6 Pick up	7 Truck 3/4 ton (Colt Diesel) Truck 2-AS	8 Truck 3 As	9 Truck 4 As	10 Truck 5 As atau lebih	11 Sepeda, Becak, Gerobak	TOTAL	
												2 - 10 Without Motorcycle & Non Motorized	1 - 11 With Motorcycle & Motorized
06:00 - 07:00	308	15	21	17	2	16	6	2	1	0	48	81	437
07:00 - 08:00	860	29	14	10	5	28	5	2	1	0	73	93	1,026
08:00 - 09:00	720	66	20	4	1	49	12	1	0	1	51	155	926
09:00 - 10:00	543	69	10	2	0	49	22	4	1	1	34	158	735
10:00 - 11:00	464	63	10	1	0	51	25	2	1	1	31	152	647
11:00 - 12:00	358	57	9	1	0	45	14	2	0	1	24	130	512
12:00 - 13:00	369	47	11	2	0	45	16	0	1	0	22	124	515
13:00 - 14:00	387	54	19	5	0	61	13	2	0	1	40	155	583
14:00 - 15:00	375	39	4	0	1	43	17	3	1	0	33	107	515
15:00 - 16:00	396	51	1	0	0	39	22	3	1	1	42	117	555
16:00 - 17:00	400	40	1	0	0	34	20	1	0	1	43	98	541
17:00 - 18:00	331	33	2	0	1	37	19	1	1	0	46	94	470
18:00 - 19:00	447	30	0	0	0	25	26	1	0	1	37	84	568
19:00 - 20:00	390	32	1	0	2	59	31	1	0	0	32	126	547
20:00 - 21:00	343	17	0	0	1	52	35	2	0	1	24	108	475
21:00 - 22:00	261	7	4	0	1	26	14	2	0	0	24	54	340
22:00 - 23:00	206	10	1	13	0	17	11	3	1	1	33	56	294
23:00 - 24:00	133	9	1	0	0	11	6	1	0	0	33	29	195
24:00 - 01:00	109	8	0	0	0	10	6	1	0	0	44	25	179
01:00 - 02:00	90	3	0	0	0	4	4	1	0	1	50	14	153
02:00 - 03:00	51	2	0	0	0	2	3	0	0	0	28	7	86
03:00 - 04:00	30	1	0	0	0	2	3	1	1	0	11	9	50
04:00 - 05:00	43	2	1	0	0	3	4	2	0	0	12	12	67
05:00 - 06:00	89	8	7	0	0	5	6	2	0	0	19	29	137
Total	7,703	691	137	56	15	715	340	38	10	13	834	2,016	10,553

FORMULIR PERHITUNGAN LALU-LINTAS

Direction : 2

Pukul	1 Sepeda Motor, Scooter/Vespa	2 Sedan, Jeep, Kijang, Taxi, Stalion-Wagon	3 Bis Kecil, (Mikrolet, Angkot) Elf	4 Bis Sedang	5 Bis Besar	6 Pick up	7 Truck 3/4 ton (Colt Diesel) Truck 2-AS	8 Truck 3 As	9 Truck 4 As	10 Truck 5 As atau lebih	11 Sepeda, Becak, Gerobak	TOTAL	
												2 - 10 Without Motorcycle & Non Motorized	1 - 11 With Motorcycle & Motorized
06:00 - 07:00	181	8	15	16	2	10	3	0	0	0	26	55	261
07:00 - 08:00	251	13	13	6	0	10	2	1	0	0	21	46	318
08:00 - 09:00	286	23	11	3	1	21	6	1	0	0	22	67	375
09:00 - 10:00	283	31	7	3	0	29	14	1	1	0	30	86	399
10:00 - 11:00	349	37	5	1	0	44	16	2	0	0	27	106	482
11:00 - 12:00	388	39	4	0	0	45	18	3	1	0	27	109	525
12:00 - 13:00	307	42	6	0	0	36	9	1	1	1	21	96	425
13:00 - 14:00	277	47	3	0	0	45	19	4	1	1	37	121	435
14:00 - 15:00	385	49	4	0	1	51	21	3	1	1	33	131	550
15:00 - 16:00	495	59	6	1	1	53	18	3	1	1	41	143	679
16:00 - 17:00	860	82	5	2	4	50	15	1	0	2	76	161	1,097
17:00 - 18:00	754	56	5	1	3	46	12	2	1	1	67	126	947
18:00 - 19:00	734	55	5	0	1	30	9	1	0	2	43	103	881
19:00 - 20:00	486	30	1	0	1	24	11	2	1	1	27	69	583
20:00 - 21:00	378	25	1	0	2	27	9	1	1	0	22	64	464
21:00 - 22:00	333	20	2	0	0	30	11	1	0	1	17	65	416
22:00 - 23:00	283	19	1	0	0	49	16	2	0	1	22	87	392
23:00 - 24:00	235	13	0	0	0	59	19	1	0	2	34	94	363
24:00 - 01:00	201	12	0	0	0	47	24	1	0	1	42	85	327
01:00 - 02:00	207	15	0	0	0	25	23	2	0	0	59	65	331
02:00 - 03:00	123	17	0	0	0	10	17	0	0	0	40	44	207
03:00 - 04:00	69	6	0	0	0	7	10	1	0	0	23	24	116
04:00 - 05:00	50	5	0	0	0	4	6	0	0	0	13	16	78
05:00 - 06:00	53	4	1	0	0	1	2	1	0	0	9	9	72
Total	7,968	705	96	34	15	754	312	34	10	14	780	1,975	10,722

Location: Junction 1



Traffic Volume by Time Zone (Weekday Average Volume, Vehicle/Day)

FORMULIR PERHITUNGAN LALU-LINTAS

Direction : 1

Pukul	1	2	3	4	5	6	7	8	9	10	11	TOTAL	
	Sepeda Motor, Scooter/Vespa	Sedan, Jeep, Kijang, Taxi, Station-Wagon	Bis Kecil, (Mikrolet, Angkot) Elf	Bis Sedang	Bis Besar	Pick up	Truck 3/4 ton (Colt Diesel) Truck 2-AS	Truck 3 As	Truck 4 As	Truck 5 As atau lebih	Sepeda, Becak, Gerobak	2 - 10 Without Motorcycle on Motoriz	1 - 11 With Motorcycle Motorized
06:00 - 07:00	282	16	1	1	2	3	5	0	0	0	54	29	365
07:00 - 08:00	430	15	0	2	2	7	7	1	0	0	49	35	514
08:00 - 09:00	454	18	0	2	0	22	8	1	0	0	44	51	549
09:00 - 10:00	354	20	1	2	0	32	14	1	1	1	33	72	458
10:00 - 11:00	348	30	0	2	1	60	19	1	1	1	39	114	501
11:00 - 12:00	356	25	0	3	0	56	13	2	2	1	24	102	482
12:00 - 13:00	329	37	1	3	1	54	13	1	1	1	27	112	468
13:00 - 14:00	345	36	0	3	0	62	17	3	2	1	32	123	500
14:00 - 15:00	339	39	1	2	1	57	14	2	3	1	24	118	481
15:00 - 16:00	356	41	0	3	1	49	15	4	3	1	34	117	507
16:00 - 17:00	498	46	0	6	4	38	12	1	2	2	42	111	652
17:00 - 18:00	507	41	0	1	1	17	8	2	1	2	52	75	634
18:00 - 19:00	546	42	0	1	1	10	10	1	1	1	48	66	660
19:00 - 20:00	598	32	0	0	3	10	8	2	0	1	38	55	691
20:00 - 21:00	561	36	0	0	1	18	7	2	2	1	32	66	659
21:00 - 22:00	485	43	0	1	1	28	10	1	1	2	33	86	605
22:00 - 23:00	391	29	0	0	0	36	18	1	1	1	25	87	502
23:00 - 24:00	273	37	0	0	0	34	26	1	1	1	24	100	397
24:00 - 01:00	204	38	0	1	1	32	28	2	1	2	29	104	337
01:00 - 02:00	173	26	0	0	0	12	18	1	0	0	31	57	261
02:00 - 03:00	122	20	0	0	0	8	17	1	0	0	27	46	196
03:00 - 04:00	92	14	0	0	1	4	9	1	0	0	23	29	144
04:00 - 05:00	122	24	0	0	0	4	7	1	0	0	28	35	184
05:00 - 06:00	152	28	0	0	0	4	3	1	0	0	49	37	239
Total	8,316	732	5	32	22	655	304	34	22	21	841	1,827	10,984

FORMULIR PERHITUNGAN LALU-LINTAS

Direction : 2

Pukul	1	2	3	4	5	6	7	8	9	10	11	TOTAL	
	Sepeda Motor, Scooter/Vespa	Sedan, Jeep, Kijang, Taxi, Station-Wagon	Bis Kecil, (Mikrolet, Angkot) Elf	Bis Sedang	Bis Besar	Pick up	Truck 3/4 ton (Colt Diesel) Truck 2-AS	Truck 3 As	Truck 4 As	Truck 5 As atau lebih	Sepeda, Becak, Gerobak	2 - 10 Without Motorcycle on Motoriz	1 - 11 With Motorcycle Motorized
06:00 - 07:00	381	9	39	9	0	4	2	1	0	0	14	63	457
07:00 - 08:00	439	13	35	6	0	7	4	1	0	0	17	67	523
08:00 - 09:00	349	24	29	6	0	21	10	1	0	0	15	92	456
09:00 - 10:00	290	30	29	6	0	33	13	1	0	0	10	113	413
10:00 - 11:00	260	36	28	5	0	41	15	1	0	0	9	127	396
11:00 - 12:00	310	43	30	5	0	43	14	2	0	0	12	137	459
12:00 - 13:00	262	40	27	7	0	35	11	1	0	0	11	121	394
13:00 - 14:00	266	46	21	7	0	35	15	2	0	0	7	125	398
14:00 - 15:00	241	35	20	5	0	34	18	1	0	0	6	114	362
15:00 - 16:00	283	44	26	5	0	38	13	1	0	0	15	128	426
16:00 - 17:00	421	68	32	6	0	26	12	1	0	0	12	146	579
17:00 - 18:00	414	64	26	4	0	24	9	1	0	0	12	129	555
18:00 - 19:00	243	41	18	6	0	9	12	1	0	0	2	86	331
19:00 - 20:00	228	17	21	1	0	8	8	1	0	0	4	55	288
20:00 - 21:00	130	15	21	0	0	4	4	0	0	0	1	44	175
21:00 - 22:00	102	11	16	0	0	4	3	1	0	0	1	35	138
22:00 - 23:00	74	7	6	0	0	7	3	1	0	0	1	25	100
23:00 - 24:00	46	6	2	0	0	10	4	0	0	0	0	22	68
24:00 - 01:00	35	7	1	0	0	8	3	0	0	0	0	19	54
01:00 - 02:00	32	6	0	0	0	7	6	1	0	0	0	21	53
02:00 - 03:00	24	10	0	0	0	5	3	1	0	0	0	20	44
03:00 - 04:00	21	6	3	0	0	5	2	1	0	0	1	18	40
04:00 - 05:00	30	8	7	0	0	6	3	1	0	0	2	25	57
05:00 - 06:00	40	5	16	3	0	1	3	1	0	0	2	29	72
Total	4,921	593	453	82	2	416	192	24	0	0	155	1,761	6,837

FORMULIR PERHITUNGAN LALU-LINTAS

Direction : 3

Pukul	1	2	3	4	5	6	7	8	9	10	11	TOTAL	
	Sepeda Motor, Scooter/ Vespa	Sedan, Jeep, Kijang, Taxi, Station-Wagon	Bis Kecil, (Mikrolet, Angkot) Elf	Bis Sedang	Bis Besar	Pick up	Truck 3/4 ton (Colt Diesel) Truck 2-AS	Truck 3 As	Truck 4 As	Truck 5 As atau lebih	Sepeda, Becak, Gerobak	2 - 10 Without Motorcycle	1 - 11 With Motorcycle & Motorized
06:00 - 07:00	1,107	221	4	30	4	19	15	1	1	1	4	297	1,408
07:00 - 08:00	2,230	321	3	27	4	26	17	1	2	2	4	402	2,636
08:00 - 09:00	2,249	366	2	24	0	59	23	2	3	1	4	480	2,733
09:00 - 10:00	1,602	382	3	19	0	112	31	2	2	2	3	553	2,158
10:00 - 11:00	1,417	385	2	23	1	123	32	3	2	1	4	571	1,992
11:00 - 12:00	1,209	363	4	18	1	107	27	2	2	2	2	526	1,737
12:00 - 13:00	1,173	379	5	23	0	117	30	3	2	1	2	561	1,737
13:00 - 14:00	1,284	398	5	23	2	113	28	4	1	1	2	575	1,861
14:00 - 15:00	1,384	444	4	16	1	116	23	3	4	1	2	613	1,998
15:00 - 16:00	1,381	585	2	25	2	128	31	3	1	2	3	779	2,163
16:00 - 17:00	1,878	602	0	23	1	120	31	3	1	1	3	783	2,664
17:00 - 18:00	2,053	638	1	18	1	98	24	2	1	1	3	784	2,840
18:00 - 19:00	1,904	845	2	31	2	90	61	3	1	1	3	1,036	2,943
19:00 - 20:00	1,315	757	3	31	1	107	58	1	1	0	1	960	2,276
20:00 - 21:00	864	575	8	25	0	70	36	2	1	2	2	721	1,587
21:00 - 22:00	650	448	4	14	0	41	15	2	1	1	2	526	1,177
22:00 - 23:00	444	315	5	6	1	26	11	3	1	2	2	370	815
23:00 - 24:00	233	201	1	2	0	23	9	2	1	1	2	241	476
24:00 - 01:00	132	130	2	0	0	13	6	2	0	1	1	155	288
01:00 - 02:00	102	77	0	0	0	13	4	2	1	2	1	99	202
02:00 - 03:00	89	65	1	0	0	9	3	4	1	1	1	85	175
03:00 - 04:00	72	66	1	0	2	8	6	4	1	1	2	89	163
04:00 - 05:00	96	64	1	4	1	8	6	6	1	1	3	93	191
05:00 - 06:00	297	89	1	24	1	10	10	5	1	0	7	141	444
Total	25,163	8,718	63	408	27	1,554	538	66	36	27	62	11,437	36,662

FORMULIR PERHITUNGAN LALU-LINTAS

Direction : 4

Pukul	1	2	3	4	5	6	7	8	9	10	11	TOTAL	
	Sepeda Motor, Scooter/ Vespa	Sedan, Jeep, Kijang, Taxi, Station-Wagon	Bis Kecil, (Mikrolet, Angkot) Elf	Bis Sedang	Bis Besar	Pick up	Truck 3/4 ton (Colt Diesel) Truck 2-AS	Truck 3 As	Truck 4 As	Truck 5 As atau lebih	Sepeda, Becak, Gerobak	2 - 10 Without Motorcycle	1 - 11 With Motorcycle & Motorized
06:00 - 07:00	829	875	1	31	0	34	27	6	6	2	6	983	1,818
07:00 - 08:00	2,466	1,194	1	26	0	79	29	4	4	2	5	1,339	3,810
08:00 - 09:00	2,688	1,231	2	26	1	150	35	4	8	2	3	1,458	4,149
09:00 - 10:00	1,962	1,051	2	20	0	156	44	8	7	3	1	1,291	3,255
10:00 - 11:00	1,684	1,122	2	18	0	197	41	5	12	2	1	1,399	3,085
11:00 - 12:00	1,471	930	2	17	0	217	74	9	10	4	1	1,264	2,736
12:00 - 13:00	967	823	4	20	0	180	58	10	13	4	1	1,112	2,080
13:00 - 14:00	1,103	883	3	19	1	167	45	6	10	2	2	1,134	2,239
14:00 - 15:00	1,267	866	4	18	1	183	40	7	14	3	1	1,135	2,404
15:00 - 16:00	1,123	831	3	18	1	175	37	9	16	5	6	1,093	2,223
16:00 - 17:00	1,451	966	3	15	1	151	28	5	16	5	4	1,190	2,645
17:00 - 18:00	2,004	1,022	2	20	1	72	18	7	9	4	1	1,156	3,161
18:00 - 19:00	1,269	632	0	25	1	45	31	4	15	5	1	759	2,029
19:00 - 20:00	861	696	0	25	1	27	29	8	15	5	0	805	1,667
20:00 - 21:00	659	628	0	14	0	22	19	8	16	7	0	713	1,373
21:00 - 22:00	537	559	0	4	0	18	13	6	12	6	0	619	1,157
22:00 - 23:00	483	458	0	4	0	13	11	9	13	9	0	517	1,000
23:00 - 24:00	265	310	0	2	1	9	9	10	14	9	0	362	628
24:00 - 01:00	158	121	0	0	2	11	6	7	13	12	0	172	329
01:00 - 02:00	98	92	0	1	0	8	8	7	10	5	0	132	230
02:00 - 03:00	51	57	0	1	0	10	7	6	14	7	0	102	153
03:00 - 04:00	49	55	0	3	0	12	8	11	8	6	0	104	153
04:00 - 05:00	49	107	0	12	1	9	9	8	8	4	0	157	206
05:00 - 06:00	109	209	0	31	1	13	17	7	10	3	0	291	400
Total	23,605	15,717	28	368	14	1,956	644	172	272	117	34	19,289	42,928

FORMULIR PERHITUNGAN LALU-LINTAS

Direction : 5

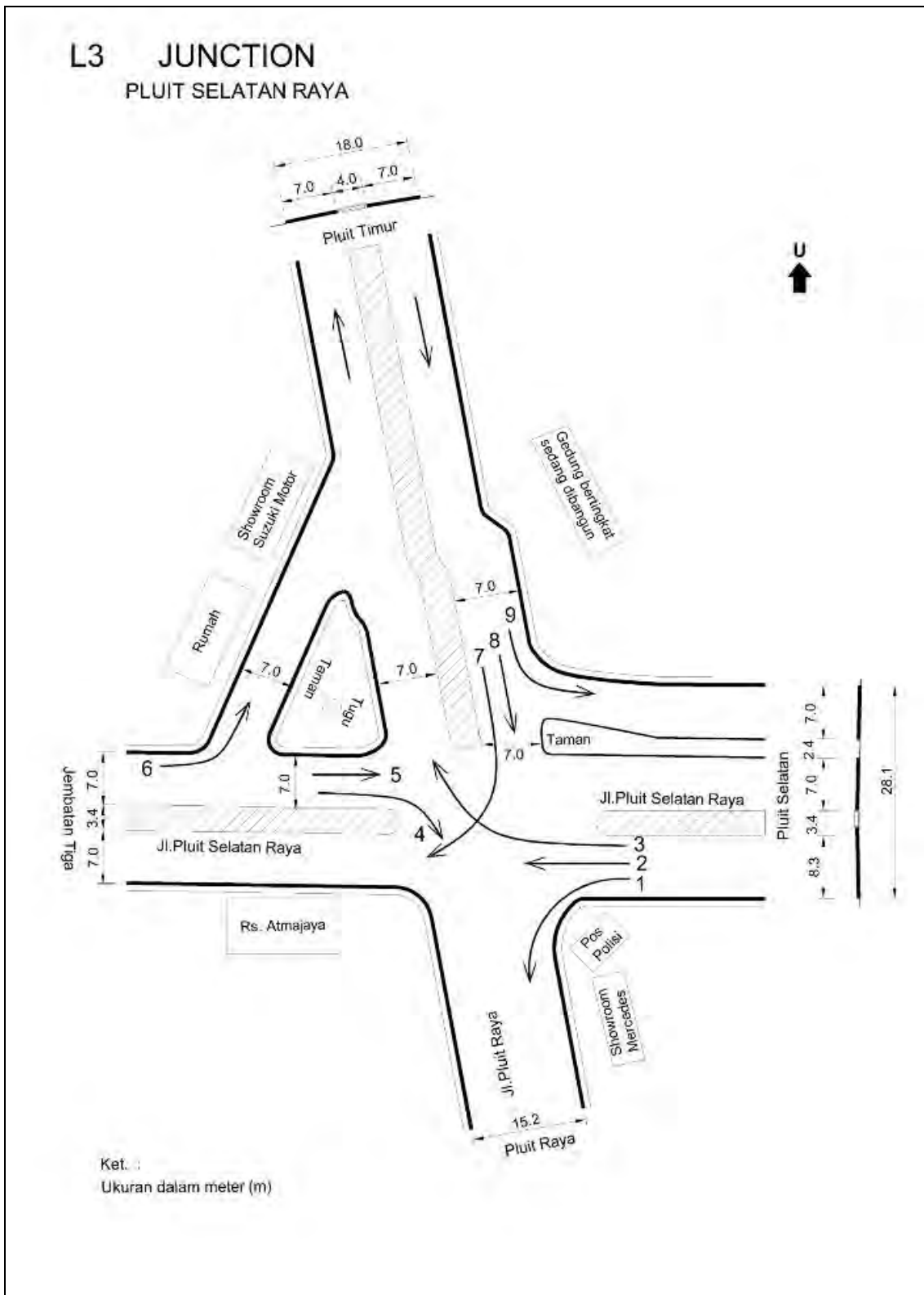
Pukul	1	2	3	4	5	6	7	8	9	10	11	TOTAL	
	Sepeda Motor, Scooter/Vespa	Sedan, Jeep, Kijang, Taxi, Station-Wagon	Bis Kecil, (Mikrolet, Angkot) Elf	Bis Sedang	Bis Besar	Pick up	Truck 3/4 ton (Colt Diesel) Truck 2-AS	Truck 3 As	Truck 4 As	Truck 5 As atau lebih	Sepeda, Becak, Gerobak	2 - 10 Without Motorcycle	1 - 11 With Motorcycle
06:00 - 07:00	586	31	34	11	4	12	14	2	1	1	40	111	737
07:00 - 08:00	1,060	84	33	7	5	28	15	2	1	1	37	177	1,274
08:00 - 09:00	1,101	137	34	9	1	60	23	2	2	0	37	268	1,406
09:00 - 10:00	789	121	35	8	1	114	27	2	3	1	17	311	1,117
10:00 - 11:00	688	98	35	8	0	123	32	3	1	1	15	303	1,005
11:00 - 12:00	654	84	34	9	1	114	33	4	1	1	18	280	953
12:00 - 13:00	592	99	33	10	0	83	28	2	2	2	23	259	874
13:00 - 14:00	591	87	33	9	1	98	33	1	1	0	15	265	871
14:00 - 15:00	633	75	31	7	2	80	26	2	1	0	15	224	873
15:00 - 16:00	588	83	32	10	1	82	29	3	1	1	23	242	853
16:00 - 17:00	789	78	32	8	1	58	28	3	1	1	25	208	1,022
17:00 - 18:00	860	66	37	5	0	50	37	3	1	1	34	200	1,095
18:00 - 19:00	737	57	38	5	1	43	34	1	0	1	22	180	939
19:00 - 20:00	602	48	50	1	3	87	30	1	0	0	13	220	835
20:00 - 21:00	427	28	46	0	0	69	23	2	0	1	10	171	608
21:00 - 22:00	310	22	35	1	0	26	13	3	1	1	7	102	418
22:00 - 23:00	260	19	23	0	0	14	9	4	1	1	9	72	341
23:00 - 24:00	164	14	3	0	1	7	7	2	1	1	7	36	207
24:00 - 01:00	87	7	1	0	0	5	4	2	0	0	6	19	112
01:00 - 02:00	58	3	0	0	0	5	7	1	0	0	5	16	79
02:00 - 03:00	38	4	0	0	0	2	4	1	1	0	3	12	54
03:00 - 04:00	33	5	0	0	0	3	6	1	0	0	3	17	53
04:00 - 05:00	44	3	6	1	0	3	5	3	0	1	5	23	72
05:00 - 06:00	77	10	19	6	1	7	11	5	1	2	7	62	146
Total	11,769	1,265	625	114	24	1,172	479	55	24	20	396	3,778	15,943

FORMULIR PERHITUNGAN LALU-LINTAS

Direction : 6

Pukul	1	2	3	4	5	6	7	8	9	10	11	TOTAL	
	Sepeda Motor, Scooter/Vespa	Sedan, Jeep, Kijang, Taxi, Station-Wagon	Bis Kecil, (Mikrolet, Angkot) Elf	Bis Sedang	Bis Besar	Pick up	Truck 3/4 ton (Colt Diesel) Truck 2-AS	Truck 3 As	Truck 4 As	Truck 5 As atau lebih	Sepeda, Becak, Gerobak	2 - 10 Without Motorcycle	1 - 11 With Motorcycle
06:00 - 07:00	102	31	0	1	3	4	8	0	1	0	1	49	153
07:00 - 08:00	119	59	1	1	2	10	16	0	1	0	1	91	212
08:00 - 09:00	146	69	1	2	0	20	26	1	1	0	4	120	270
09:00 - 10:00	142	52	1	3	0	31	43	1	2	0	2	133	276
10:00 - 11:00	142	58	1	3	0	36	43	1	1	0	2	142	286
11:00 - 12:00	130	59	1	3	0	34	37	2	1	0	0	137	267
12:00 - 13:00	125	60	1	3	0	23	32	1	1	0	1	122	248
13:00 - 14:00	117	62	1	3	1	28	32	0	0	0	2	127	245
14:00 - 15:00	127	64	1	3	0	25	32	1	1	0	2	127	255
15:00 - 16:00	125	65	1	2	0	19	34	1	1	0	4	123	251
16:00 - 17:00	133	64	1	2	0	16	28	1	0	1	2	113	248
17:00 - 18:00	151	73	0	1	0	16	15	1	0	0	2	106	260
18:00 - 19:00	110	83	0	0	1	10	16	0	0	0	0	110	220
19:00 - 20:00	99	64	0	1	1	27	18	1	0	1	0	113	212
20:00 - 21:00	72	50	0	0	0	6	14	0	0	0	0	71	142
21:00 - 22:00	81	53	0	1	0	6	5	0	0	0	0	65	146
22:00 - 23:00	35	30	0	0	0	3	4	0	1	0	0	38	73
23:00 - 24:00	29	20	0	0	0	2	1	0	0	0	0	23	52
24:00 - 01:00	22	17	0	0	0	0	1	1	0	0	0	19	41
01:00 - 02:00	11	9	0	0	0	1	0	1	0	0	0	11	22
02:00 - 03:00	12	14	0	0	0	1	0	0	0	0	0	15	27
03:00 - 04:00	7	9	0	0	0	1	0	0	0	0	0	10	17
04:00 - 05:00	12	11	0	0	0	3	3	0	0	0	0	17	30
05:00 - 06:00	23	13	0	1	0	1	4	1	0	0	0	20	44
Total	2,070	1,088	10	27	9	322	414	17	13	4	25	1,903	3,998

Location: Junction 2



Traffic Volume by Time Zone (Weekday Average Volume, Vehicle/Day)

FORMULIR PERHITUNGAN LALU-LINTAS

Direction : 1

Pukul	1	2	3	4	5	6	7	8	9	10	11	TOTAL	
	Sepeda Motor, Scooter/Vespa	Sedan, Jeep, Kijang, Taxi, Station-Wagon	Bis Kecil, (Mikrolet, Angkot) Elf	Bis Sedang	Bis Besar	Pick up	Truck 3/4 ton (Colt Diesel) Truck 2-AS	Truck 3 As	Truck 4 As	Truck 5 As atau lebih	Sepeda, Becak, Gerobak	2 - 10 Without Motorcycle & Non Motorized	1 - 11 With Motorcycle & Motorized
06:00 - 07:00	249	156	4	2	0	10	11	2	0	0	8	183	440
07:00 - 08:00	329	217	6	2	0	7	9	1	0	0	6	241	576
08:00 - 09:00	276	178	4	1	0	25	15	1	1	0	6	226	509
09:00 - 10:00	259	181	3	1	0	34	21	3	0	1	5	243	507
10:00 - 11:00	248	183	2	1	0	44	23	2	0	0	7	255	510
11:00 - 12:00	200	152	1	0	0	31	18	1	0	0	5	203	408
12:00 - 13:00	198	165	2	1	0	25	15	1	0	0	5	210	412
13:00 - 14:00	199	152	2	0	0	32	15	2	0	0	4	204	407
14:00 - 15:00	187	162	1	1	0	33	21	1	0	0	5	218	410
15:00 - 16:00	196	171	1	0	0	39	21	2	0	0	4	234	433
16:00 - 17:00	207	182	2	1	0	30	11	1	0	0	4	227	438
17:00 - 18:00	196	180	2	0	0	13	14	3	1	2	5	195	396
18:00 - 19:00	124	131	0	0	0	9	5	1	0	0	3	147	274
19:00 - 20:00	111	97	0	0	0	7	4	2	0	0	2	111	224
20:00 - 21:00	80	85	0	0	0	4	1	1	0	0	1	91	172
21:00 - 22:00	73	110	0	0	0	4	4	2	0	0	0	120	193
22:00 - 23:00	63	70	0	0	0	7	3	1	0	0	0	80	144
23:00 - 24:00	41	45	0	0	0	6	2	2	0	0	1	55	96
24:00 - 01:00	31	31	0	0	0	8	3	1	0	0	0	43	74
01:00 - 02:00	15	13	0	0	0	4	2	2	0	0	0	22	37
02:00 - 03:00	9	11	0	0	0	3	1	0	0	0	0	16	25
03:00 - 04:00	12	11	0	0	0	2	2	1	0	0	1	16	29
04:00 - 05:00	11	9	0	0	0	1	2	2	0	0	1	14	25
05:00 - 06:00	20	15	0	0	0	2	2	1	0	0	1	20	41
Total	3,332	2,686	30	12	1	378	224	36	3	4	76	3,374	6,782

FORMULIR PERHITUNGAN LALU-LINTAS

Direction : 2

Pukul	1	2	3	4	5	6	7	8	9	10	11	TOTAL	
	Sepeda Motor, Scooter/Vespa	Sedan, Jeep, Kijang, Taxi, Station-Wagon	Bis Kecil, (Mikrolet, Angkot) Elf	Bis Sedang	Bis Besar	Pick up	Truck 3/4 ton (Colt Diesel) Truck 2-AS	Truck 3 As	Truck 4 As	Truck 5 As atau lebih	Sepeda, Becak, Gerobak	2 - 10 Without Motorcycle & Non Motorized	1 - 11 With Motorcycle & Motorized
06:00 - 07:00	53	30	1	7	0	1	1	0	0	0	10	40	103
07:00 - 08:00	20	18	0	5	0	0	1	0	0	0	7	24	51
08:00 - 09:00	36	25	0	5	0	1	2	0	0	0	9	33	78
09:00 - 10:00	54	46	0	6	0	7	4	0	0	0	3	63	120
10:00 - 11:00	61	59	0	5	0	9	4	0	0	0	3	78	142
11:00 - 12:00	54	55	0	3	0	9	5	0	0	0	4	73	132
12:00 - 13:00	78	61	0	6	0	9	2	1	0	0	3	79	161
13:00 - 14:00	69	64	0	6	0	10	3	0	0	0	1	84	154
14:00 - 15:00	75	66	0	5	0	9	5	1	1	0	3	88	166
15:00 - 16:00	82	64	0	5	0	12	2	1	0	0	4	85	172
16:00 - 17:00	114	67	1	5	0	8	4	1	0	0	4	85	203
17:00 - 18:00	141	84	1	5	0	10	5	1	0	1	6	107	254
18:00 - 19:00	111	59	0	6	0	8	3	1	0	0	2	77	189
19:00 - 20:00	77	41	0	1	0	4	3	1	0	0	2	51	129
20:00 - 21:00	57	37	1	0	0	1	1	1	0	0	2	41	99
21:00 - 22:00	40	33	0	0	0	1	1	1	0	0	2	35	77
22:00 - 23:00	35	24	0	0	0	2	0	1	0	0	2	28	66
23:00 - 24:00	31	20	0	0	0	12	2	2	0	0	2	37	69
24:00 - 01:00	22	11	0	0	0	7	2	2	0	0	1	22	45
01:00 - 02:00	18	9	0	0	0	2	2	0	0	0	1	13	32
02:00 - 03:00	14	10	0	0	0	1	2	1	0	0	1	14	29
03:00 - 04:00	12	6	0	0	0	0	1	1	1	1	0	10	23
04:00 - 05:00	10	6	0	0	0	1	1	1	0	0	2	10	21
05:00 - 06:00	26	11	0	2	0	0	1	1	0	0	5	16	46
Total	1,290	906	5	71	2	127	55	17	5	3	79	1,192	2,561

FORMULIR PERHITUNGAN LALU-LINTAS

Direction : 3

Pukul	1	2	3	4	5	6	7	8	9	10	11	TOTAL	
	Sepeda Motor, Scooter/Vespa	Sedan, Jeep, Kijang, Taxi, Station-Wagon	Bis Kecil, (Mikrolet, Angkot) Elf	Bis Sedang	Bis Besar	Pick up	Truck 3/4 ton (Colt Diesel) Truck 2-AS	Truck 3 As	Truck 4 As	Truck 5 As atau lebih	Sepeda, Becak, Gerobak	2 - 10 Without Motorcycle & Non Motorized	1 - 11 With Motorcycle & Motorized
0600 - 0700	1,094	343	37	27	0	19	6	0	0	0	48	481	1,574
0700 - 0800	1,686	433	36	28	0	18	8	2	0	0	45	570	2,256
0800 - 0900	1,576	417	27	28	0	44	11	1	1	0	34	563	2,139
0900 - 1000	1,138	460	29	21	0	81	16	1	0	0	25	633	1,770
1000 - 1100	1,124	453	32	21	0	90	20	1	1	0	16	634	1,758
1100 - 1200	1,063	463	31	20	0	73	21	1	1	0	9	619	1,682
1200 - 1300	1,239	539	34	25	1	95	22	2	1	0	12	730	1,969
1300 - 1400	1,282	521	29	24	2	95	15	2	0	1	11	701	1,983
1400 - 1500	1,190	561	32	21	1	93	13	1	1	0	10	733	1,923
1500 - 1600	1,220	577	29	22	2	99	15	3	1	1	9	757	1,977
1600 - 1700	1,558	870	40	21	1	135	16	2	2	1	14	1,102	2,661
1700 - 1800	1,856	860	29	20	1	90	19	2	1	0	17	1,040	2,896
1800 - 1900	1,769	790	29	27	1	63	17	2	0	0	7	935	2,704
1900 - 2000	1,182	686	26	26	0	45	22	1	0	0	2	809	1,992
2000 - 2100	761	526	32	24	0	31	10	1	0	1	1	626	1,388
2100 - 2200	561	407	22	14	0	23	7	2	2	1	2	479	1,040
2200 - 2300	408	347	20	7	0	30	5	1	1	1	1	414	822
2300 - 2400	241	220	8	1	0	18	1	1	0	0	2	250	491
2400 - 0100	205	130	4	0	0	15	2	1	0	1	1	155	360
0100 - 0200	92	79	0	0	0	9	2	1	1	1	1	94	186
0200 - 0300	65	60	1	0	0	9	2	2	0	0	1	75	140
0300 - 0400	66	55	2	0	1	8	2	4	0	0	1	73	140
0400 - 0500	71	47	15	4	0	6	2	4	0	1	4	82	153
0500 - 0600	267	57	23	18	1	8	3	3	0	0	9	122	389
Total	21,714	9,903	564	401	11	1,198	257	39	12	11	281	12,677	34,391

FORMULIR PERHITUNGAN LALU-LINTAS

Direction : 4

Pukul	1	2	3	4	5	6	7	8	9	10	11	TOTAL	
	Sepeda Motor, Scooter/Vespa	Sedan, Jeep, Kijang, Taxi, Station-Wagon	Bis Kecil, (Mikrolet, Angkot) Elf	Bis Sedang	Bis Besar	Pick up	Truck 3/4 ton (Colt Diesel) Truck 2-AS	Truck 3 As	Truck 4 As	Truck 5 As atau lebih	Sepeda, Becak, Gerobak	2 - 10 Without Motorcycle & Non Motorized	1 - 11 With Motorcycle & Motorized
0600 - 0700	210	133	2	1	0	5	5	1	0	0	4	147	362
0700 - 0800	450	275	2	0	0	18	7	1	0	0	9	304	763
0800 - 0900	518	216	0	0	0	32	19	1	0	0	11	268	798
0900 - 1000	272	163	1	0	0	42	18	1	0	0	7	225	504
1000 - 1100	224	138	0	0	0	51	14	1	0	0	5	206	434
1100 - 1200	206	116	0	0	0	41	18	1	0	0	7	177	390
1200 - 1300	173	125	1	0	0	32	19	2	0	0	5	180	357
1300 - 1400	163	117	0	0	0	35	15	1	0	0	4	168	335
1400 - 1500	164	105	1	0	1	26	15	1	0	0	3	149	316
1500 - 1600	136	100	1	0	1	24	14	1	0	0	2	140	278
1600 - 1700	118	91	0	1	0	19	6	0	0	0	7	117	243
1700 - 1800	134	80	1	0	0	20	6	1	1	0	15	108	257
1800 - 1900	123	86	0	1	1	10	1	0	0	0	8	99	230
1900 - 2000	104	133	1	0	1	6	1	0	0	0	3	143	250
2000 - 2100	86	117	1	0	0	4	2	0	0	0	3	124	213
2100 - 2200	55	71	0	0	0	3	1	0	0	0	1	75	131
2200 - 2300	61	41	1	0	0	3	1	1	0	0	1	49	111
2300 - 2400	31	21	0	0	0	2	2	0	0	0	0	26	57
2400 - 0100	18	12	0	0	0	3	1	0	0	0	1	16	34
0100 - 0200	11	9	0	0	0	0	1	0	0	0	1	10	22
0200 - 0300	6	5	0	0	0	1	0	0	0	0	1	6	12
0300 - 0400	7	6	0	0	0	1	1	0	0	0	0	8	15
0400 - 0500	8	10	0	0	1	1	1	0	0	0	0	13	21
0500 - 0600	16	17	0	0	1	1	1	1	0	0	1	21	38
Total	3,292	2,186	14	6	7	379	168	16	4	1	98	2,781	6,171

FORMULIR PERHITUNGAN LALU-LINTAS

Direction : 5

Pukul	1	2	3	4	5	6	7	8	9	10	11	TOTAL	
	Sepeda Motor, Scooter/Vespa	Sedan, Jeep, Kijang, Taxi, Station-Wagon	Bis Kecil, (Mikrolet, Angkot) Elf	Bis Sedang	Bis Besar	Pick up	Truck 3/4 ton (Colt Diesel) Truck 2-AS	Truck 3 As	Truck 4 As	Truck 5 As atau lebih	Sepeda, Becak, Gerobak	2 - 10 Without Motorcycle & Non Motorized	1 - 11 With Motorcycle & Motorized
0600 - 0700	574	529	4	7	0	25	32	10	7	4	6	625	1,199
0700 - 0800	1,255	634	3	7	0	47	29	6	4	1	11	741	1,996
0800 - 0900	1,261	537	1	8	1	88	45	5	9	1	9	704	1,965
0900 - 1000	885	477	2	5	0	118	72	9	8	2	3	697	1,582
1000 - 1100	977	467	4	7	1	126	98	14	9	2	5	733	1,710
1100 - 1200	794	387	3	6	1	134	74	11	11	3	4	636	1,429
1200 - 1300	675	370	2	7	0	106	63	14	14	7	4	588	1,263
1300 - 1400	751	508	2	6	0	132	59	6	9	4	5	730	1,481
1400 - 1500	748	520	2	6	0	150	65	14	13	4	4	778	1,526
1500 - 1600	679	498	3	6	0	129	64	17	16	2	6	741	1,420
1600 - 1700	822	463	5	5	0	94	49	13	14	3	8	654	1,476
1700 - 1800	965	434	3	5	1	67	26	9	10	4	9	568	1,532
1800 - 1900	741	430	6	4	1	90	18	6	12	5	4	576	1,317
1900 - 2000	583	466	1	1	1	35	23	10	12	5	3	547	1,130
2000 - 2100	380	779	1	0	1	43	19	11	192	9	2	1,057	1,436
2100 - 2200	359	422	1	0	0	28	16	10	17	8	1	503	862
2200 - 2300	360	270	1	1	0	9	12	11	15	10	2	330	690
2300 - 2400	250	161	1	0	0	11	11	12	15	10	3	224	475
2400 - 0100	129	134	0	0	0	5	6	11	13	9	3	181	311
0100 - 0200	65	44	0	0	0	3	8	7	10	6	1	78	143
0200 - 0300	38	38	0	0	0	4	7	8	11	5	2	75	114
0300 - 0400	30	53	1	0	1	5	14	10	4	3	2	94	124
0400 - 0500	43	109	1	2	2	7	17	10	10	3	2	163	206
0500 - 0600	77	168	0	6	2	6	19	11	7	2	2	225	302
Total	13,440	8,889	47	89	13	1,462	846	247	442	114	101	12,249	25,690

FORMULIR PERHITUNGAN LALU-LINTAS

Direction : 6

Pukul	1	2	3	4	5	6	7	8	9	10	11	TOTAL	
	Sepeda Motor, Scooter/Vespa	Sedan, Jeep, Kijang, Taxi, Station-Wagon	Bis Kecil, (Mikrolet, Angkot) Elf	Bis Sedang	Bis Besar	Pick up	Truck 3/4 ton (Colt Diesel) Truck 2-AS	Truck 3 As	Truck 4 As	Truck 5 As atau lebih	Sepeda, Becak, Gerobak	2 - 10 Without Motorcycle & Non Motorized	1 - 11 With Motorcycle & Motorized
0600 - 0700	349	249	0	0	0	2	4	0	0	0	12	256	617
0700 - 0800	150	57	1	0	0	2	1	0	0	0	10	61	222
0800 - 0900	140	77	0	0	0	7	2	1	0	0	7	87	234
0900 - 1000	132	82	0	0	0	15	6	1	0	0	6	104	242
1000 - 1100	141	111	1	0	0	14	5	2	0	0	5	133	280
1100 - 1200	148	123	1	0	0	17	4	1	0	0	4	146	298
1200 - 1300	142	133	1	0	0	20	5	2	1	1	4	163	309
1300 - 1400	151	136	1	0	0	21	6	2	0	0	4	166	320
1400 - 1500	144	167	0	0	0	20	5	2	0	0	3	195	342
1500 - 1600	163	195	1	0	1	19	3	5	0	0	2	224	389
1600 - 1700	188	240	6	1	0	23	6	4	0	0	4	280	473
1700 - 1800	179	254	4	0	0	12	6	0	0	0	4	277	461
1800 - 1900	130	230	2	0	0	9	4	1	0	0	3	246	379
1900 - 2000	125	249	1	0	0	8	4	1	0	0	1	263	389
2000 - 2100	95	214	1	1	0	6	4	1	0	0	1	226	322
2100 - 2200	73	176	0	0	0	3	3	3	0	0	2	184	259
2200 - 2300	48	132	1	0	0	2	2	2	0	0	0	139	187
2300 - 2400	25	79	0	0	0	1	1	1	1	0	0	84	109
2400 - 0100	17	48	0	0	0	1	2	3	0	0	0	54	71
0100 - 0200	12	23	0	0	0	1	2	3	0	0	0	28	40
0200 - 0300	9	15	0	0	0	1	0	2	0	0	0	17	26
0300 - 0400	7	10	0	0	0	0	1	2	0	0	0	14	20
0400 - 0500	12	13	0	0	0	2	2	3	0	0	0	19	32
0500 - 0600	71	37	0	0	0	3	3	3	0	0	2	47	119
Total	2,652	3,050	23	2	1	208	82	43	2	2	74	3,413	6,139

FORMULIR PERHITUNGAN LALU-LINTAS

Direction : 7

Pukul	1	2	3	4	5	6	7	8	9	10	11	TOTAL	
	Sepeda Motor, Scooter/ Vespa	Sedan, Jeep, Kijang, Taxi, Station-Wagon	Bis Kecil, (Mikrolet, Angkot) Elf	Bis Sedang	Bis Besar	Pick up	Truck 3/4 ton (Colt Diesel) Truck 2-AS	Truck 3 As	Truck 4 As	Truck 5 As atau lebih	Sepeda, Becak, Gerobak	2 - 10 Without Motorcycle Non Motorized	1 - 11 With Motorcycle Motorized
0600 - 0700	18	74	0	0	0	1	1	0	0	0	0	76	94
0700 - 0800	20	59	0	0	1	3	1	0	0	0	0	65	85
0800 - 0900	22	64	1	0	0	4	2	0	0	0	0	71	93
0900 - 1000	25	65	0	0	1	6	2	0	0	0	0	74	99
1000 - 1100	37	83	0	0	0	12	3	0	0	0	1	98	136
1100 - 1200	41	55	0	1	0	8	3	1	0	0	1	69	111
1200 - 1300	55	83	1	0	1	9	3	0	0	0	0	98	153
1300 - 1400	48	73	0	0	0	11	3	0	0	0	0	88	136
1400 - 1500	61	89	0	1	2	10	6	2	0	0	1	110	171
1500 - 1600	85	115	1	1	1	13	4	1	0	0	1	137	222
1600 - 1700	93	95	1	0	0	15	2	1	0	0	4	114	212
1700 - 1800	133	93	1	0	0	6	2	0	0	0	3	103	238
1800 - 1900	98	76	0	0	0	4	1	0	0	0	1	82	182
1900 - 2000	46	49	0	0	0	4	1	5	0	0	1	60	107
2000 - 2100	26	34	0	0	0	1	1	3	0	0	0	39	65
2100 - 2200	19	27	0	0	0	2	0	2	0	0	0	32	52
2200 - 2300	18	25	0	0	0	2	0	4	0	0	0	31	49
2300 - 2400	14	17	0	0	0	6	2	3	0	0	0	28	43
2400 - 0100	10	12	0	0	0	23	3	3	0	0	0	41	52
0100 - 0200	9	9	0	0	0	16	1	3	0	0	0	29	38
0200 - 0300	21	8	0	0	0	3	1	3	0	0	0	16	36
0300 - 0400	28	6	0	0	0	2	0	2	0	0	0	11	39
0400 - 0500	23	7	0	0	0	3	0	1	0	0	0	12	35
0500 - 0600	24	23	0	0	0	3	2	1	0	0	1	29	55
Total	972	1,241	8	5	7	167	46	37	0	0	18	1,512	2,501

FORMULIR PERHITUNGAN LALU-LINTAS

Direction : 8

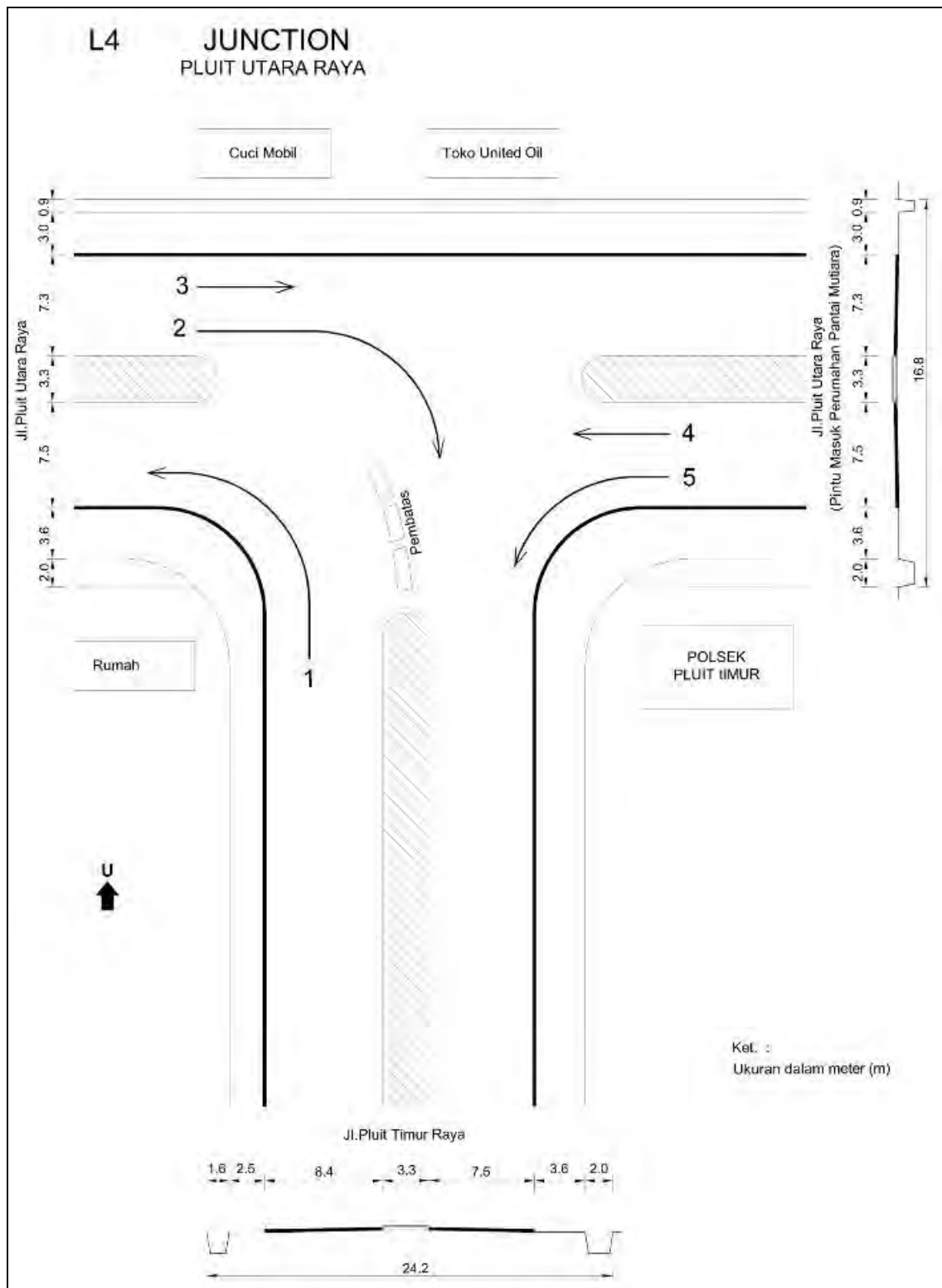
Pukul	1	2	3	4	5	6	7	8	9	10	11	TOTAL	
	Sepeda Motor, Scooter/ Vespa	Sedan, Jeep, Kijang, Taxi, Station-Wagon	Bis Kecil, (Mikrolet, Angkot) Elf	Bis Sedang	Bis Besar	Pick up	Truck 3/4 ton (Colt Diesel) Truck 2-AS	Truck 3 As	Truck 4 As	Truck 5 As atau lebih	Sepeda, Becak, Gerobak	2 - 10 Without Motorcycle Non Motorized	1 - 11 With Motorcycle Motorized
0600 - 0700	261	289	3	2	1	19	14	1	1	0	5	330	597
0700 - 0800	365	340	0	1	1	19	15	1	1	0	8	378	751
0800 - 0900	436	399	0	1	0	27	24	1	0	0	5	453	894
0900 - 1000	389	343	1	3	0	35	34	2	0	0	5	420	813
1000 - 1100	412	331	3	1	1	42	31	1	0	0	4	412	828
1100 - 1200	366	312	1	0	0	39	26	2	1	0	2	382	749
1200 - 1300	311	302	1	0	0	39	23	2	0	0	1	367	679
1300 - 1400	354	251	0	0	0	34	25	3	0	0	1	314	669
1400 - 1500	376	279	1	2	0	35	28	2	0	0	5	346	727
1500 - 1600	380	260	1	0	0	36	26	2	0	0	4	324	709
1600 - 1700	478	255	0	0	0	41	23	3	0	0	10	323	810
1700 - 1800	545	263	1	0	0	38	30	2	0	0	7	335	888
1800 - 1900	430	252	0	1	0	22	15	2	0	0	6	292	727
1900 - 2000	344	278	0	1	0	15	5	2	0	0	3	301	648
2000 - 2100	335	254	0	0	0	12	5	1	0	0	2	273	609
2100 - 2200	306	226	0	1	0	16	4	1	0	0	1	247	554
2200 - 2300	313	196	0	0	0	19	6	1	0	0	1	222	537
2300 - 2400	149	129	0	0	0	24	6	2	0	0	0	161	310
2400 - 0100	89	87	0	0	0	19	2	2	0	0	0	110	200
0100 - 0200	55	48	0	1	0	17	4	3	0	0	1	73	128
0200 - 0300	36	32	0	0	0	17	4	5	0	0	0	57	93
0300 - 0400	31	21	0	0	0	9	4	3	0	0	0	37	68
0400 - 0500	48	45	0	0	0	8	9	2	0	0	1	65	114
0500 - 0600	88	85	0	0	0	13	8	4	0	0	1	110	199
Total	6,897	5,276	13	16	6	596	370	50	4	1	73	6,331	13,301

FORMULIR PERHITUNGAN LALU-LINTAS

Direction : 9

Pukul	1	2	3	4	5	6	7	8	9	10	11	TOTAL	
	Sepeda Motor, Scooter/Vespa	Sedan, Jeep, Kijang, Taxi, Station-Wagon	Bis Kecil, (Mikrolet, Angkot) Elf	Bis Sedang	Bis Besar	Pick up	Truck 3/4 ton (Colt Diesel) Truck 2-AS	Truck 3 As	Truck 4 As	Truck 5 As atau lebih	Sepeda, Becak, Gerobak	2 - 10 Without Motorcycle Non Motorized	1 - 11 With Motorized
06:00 - 07:00	914	505	48	35	0	22	11	0	0	0	10	621	1,545
07:00 - 08:00	2,346	676	47	28	1	70	7	2	0	0	9	830	3,186
08:00 - 09:00	2,159	842	37	26	0	123	14	2	1	1	4	1,047	3,210
09:00 - 10:00	1,557	992	18	19	0	155	15	0	0	0	8	1,200	2,765
10:00 - 11:00	1,327	731	27	15	2	169	29	1	1	0	7	977	2,311
11:00 - 12:00	1,130	573	29	19	0	129	22	2	2	0	8	776	1,914
12:00 - 13:00	979	536	30	20	0	133	22	2	1	0	5	744	1,728
13:00 - 14:00	989	572	31	19	1	133	23	3	1	1	8	785	1,783
14:00 - 15:00	1,114	564	24	19	2	138	20	2	0	1	8	771	1,893
15:00 - 16:00	1,110	513	30	21	0	121	20	3	0	0	13	709	1,832
16:00 - 17:00	1,386	487	30	18	2	92	21	3	1	0	18	653	2,057
17:00 - 18:00	1,663	445	39	25	1	62	16	2	1	0	24	590	2,278
18:00 - 19:00	1,413	418	33	24	1	35	12	2	0	1	9	527	1,949
19:00 - 20:00	1,268	412	43	26	2	28	8	2	0	1	7	521	1,796
20:00 - 21:00	793	315	36	13	1	25	8	1	1	0	6	400	1,200
21:00 - 22:00	644	271	28	7	0	17	8	1	1	0	4	333	982
22:00 - 23:00	524	205	20	4	0	13	7	1	0	1	4	252	780
23:00 - 24:00	293	148	5	1	0	12	8	1	0	1	3	175	471
24:00 - 01:00	170	78	1	0	0	10	5	1	1	0	2	96	267
01:00 - 02:00	98	44	1	0	0	12	3	2	0	0	1	62	161
02:00 - 03:00	73	34	0	0	0	14	3	2	0	1	1	54	128
03:00 - 04:00	64	25	2	3	0	14	6	4	0	0	1	54	119
04:00 - 05:00	77	32	6	10	0	8	3	3	0	0	3	62	141
05:00 - 06:00	126	48	11	16	0	12	5	4	0	0	5	98	229
Total	22,218	9,469	576	370	14	1,546	296	45	12	8	170	12,336	34,724

Location: Junction 3



Traffic Volume by Time Zone (Weekday Average Volume, Vehicle/Day)

FORMULIR PERHITUNGAN LALU-LINTAS

Direction : 1

Pukul	1	2	3	4	5	6	7	8	9	10	11	TOTAL	
	Sepeda Motor, Scooter/Vespa	Sedan, Jeep, Kijang, Taxi, Station-Wagon	Bis Kecil, (Mikrolet, Angkot) Elf	Bis Sedang	Bis Besar	Pick up	Truck 3/4 ton (Colt Diesel) Truck 2-AS	Truck 3 As	Truck 4 As	Truck 5 As atau lebih	Sepeda, Becak, Gerobak	2 - 10 Without Motorcycle & Non Motorized	1 - 11 With Motorcycle & Motorized
06:00 - 07:00	311	274	0	0	0	7	6	0	0	1	27	289	626
07:00 - 08:00	159	161	0	0	0	3	1	0	0	0	26	165	350
08:00 - 09:00	128	145	0	0	0	6	4	0	0	0	18	155	300
09:00 - 10:00	163	146	0	0	1	9	3	1	0	0	12	160	335
10:00 - 11:00	221	177	0	0	0	16	10	0	0	0	13	204	438
11:00 - 12:00	342	310	0	0	0	46	20	1	0	0	11	378	731
12:00 - 13:00	328	355	1	0	0	48	22	3	1	0	6	430	764
13:00 - 14:00	371	384	0	0	2	49	28	5	1	1	7	469	847
14:00 - 15:00	364	405	0	1	1	42	21	2	0	1	10	473	846
15:00 - 16:00	427	445	1	1	1	49	22	5	1	0	8	524	959
16:00 - 17:00	489	560	2	1	1	52	29	5	0	0	6	651	1,145
17:00 - 18:00	520	568	1	0	1	41	19	1	1	0	11	632	1,163
18:00 - 19:00	505	629	1	1	0	40	25	1	0	0	4	698	1,207
19:00 - 20:00	457	553	1	0	0	39	31	2	0	0	3	626	1,085
20:00 - 21:00	377	461	3	0	0	42	19	4	0	1	3	529	909
21:00 - 22:00	297	362	1	0	0	19	10	3	0	1	3	396	696
22:00 - 23:00	220	235	2	0	0	16	5	4	0	0	1	263	484
23:00 - 24:00	115	115	0	0	0	18	6	3	0	0	1	144	259
24:00 - 01:00	97	71	0	0	0	13	5	2	0	0	1	92	190
01:00 - 02:00	72	34	2	0	0	6	5	4	0	1	0	52	124
02:00 - 03:00	66	26	1	0	0	8	4	6	0	0	0	45	111
03:00 - 04:00	67	25	1	1	1	5	3	6	0	0	0	41	109
04:00 - 05:00	50	31	2	0	1	4	3	5	0	0	4	47	101
05:00 - 06:00	148	69	1	0	1	3	4	6	1	0	14	84	246
Total	6,293	6,538	22	7	9	579	304	69	8	8	189	7,545	14,027

FORMULIR PERHITUNGAN LALU-LINTAS

Direction : 2

Pukul	1	2	3	4	5	6	7	8	9	10	11	TOTAL	
	Sepeda Motor, Scooter/Vespa	Sedan, Jeep, Kijang, Taxi, Station-Wagon	Bis Kecil, (Mikrolet, Angkot) Elf	Bis Sedang	Bis Besar	Pick up	Truck 3/4 ton (Colt Diesel) Truck 2-AS	Truck 3 As	Truck 4 As	Truck 5 As atau lebih	Sepeda, Becak, Gerobak	2 - 10 Without Motorcycle & Non Motorized	1 - 11 With Motorcycle & Motorized
06:00 - 07:00	473	798	39	4	2	28	24	2	0	0	9	895	1,377
07:00 - 08:00	697	1,017	33	4	2	39	32	3	0	0	6	1,129	1,832
08:00 - 09:00	777	1,102	25	1	2	81	68	3	0	1	7	1,282	2,066
09:00 - 10:00	677	1,026	16	3	1	96	103	2	1	2	8	1,249	1,935
10:00 - 11:00	613	1,067	9	0	1	98	84	4	1	1	2	1,265	1,881
11:00 - 12:00	614	919	8	1	1	90	85	3	1	2	6	1,109	1,729
12:00 - 13:00	554	964	9	0	0	85	87	6	1	1	5	1,153	1,713
13:00 - 14:00	505	769	3	1	2	63	61	5	1	0	7	904	1,417
14:00 - 15:00	522	815	2	2	4	68	85	5	1	1	7	983	1,512
15:00 - 16:00	544	776	2	3	1	69	63	4	0	1	10	920	1,474
16:00 - 17:00	733	981	4	1	3	70	59	6	0	0	15	1,124	1,873
17:00 - 18:00	814	1,048	8	2	2	59	49	4	0	0	18	1,172	2,004
18:00 - 19:00	1,074	974	1	1	1	101	21	1	0	0	18	1,100	2,192
19:00 - 20:00	678	693	2	1	1	46	16	8	0	0	9	767	1,455
20:00 - 21:00	562	504	3	0	0	34	9	4	0	0	8	554	1,125
21:00 - 22:00	464	434	4	1	0	27	11	4	1	0	9	482	955
22:00 - 23:00	412	289	1	1	0	31	13	8	0	1	6	343	761
23:00 - 24:00	210	140	1	0	0	36	16	6	0	0	3	199	412
24:00 - 01:00	173	84	1	0	0	53	14	6	0	0	1	159	333
01:00 - 02:00	120	47	2	0	0	36	7	9	0	0	1	101	222
02:00 - 03:00	129	41	0	0	0	28	8	10	0	0	1	86	217
03:00 - 04:00	145	36	3	0	0	18	7	8	0	0	1	72	218
04:00 - 05:00	147	51	5	0	0	12	10	6	0	0	3	85	236
05:00 - 06:00	198	79	6	0	1	16	14	6	0	0	6	122	326
Total	11,838	14,653	185	27	23	1,284	944	122	9	11	168	17,258	29,265

FORMULIR PERHITUNGAN LALU-LINTAS

Direction : 3

Pukul	1	2	3	4	5	6	7	8	9	10	11	TOTAL	
	Sepeda Motor, Scooter/ Vespa	Sedan, Jeep, Kijang, Taxi, Station-Wagon	Bis Kecil, (Mikrolet, Angkot) Elf	Bis Sedang	Bis Besar	Pick up	Truck 3/4 ton (Colt Diesel) Truck 2-AS	Truck 3 As	Truck 4 As	Truck 5 As atau lebih	Sepeda, Becak, Gerobak	2 - 10 Without Motorcycle Non Motorized	1 - 11 With Motorcycle Motorized
0600 - 0700	133	48	0	0	0	4	1	0	0	0	10	54	196
0700 - 0800	170	86	0	0	0	5	1	0	0	0	9	93	272
0800 - 0900	171	122	0	0	0	8	1	0	0	0	7	132	311
0900 - 1000	122	60	1	0	0	5	1	0	0	0	7	67	197
1000 - 1100	127	77	0	0	0	8	1	0	0	0	6	86	219
1100 - 1200	99	89	0	0	0	10	2	0	0	0	6	100	205
1200 - 1300	90	91	0	0	0	6	1	0	0	0	4	98	192
1300 - 1400	99	73	0	0	1	9	1	0	0	0	7	84	190
1400 - 1500	115	92	1	0	0	11	3	0	0	0	10	108	232
1500 - 1600	107	85	0	0	0	9	2	1	0	0	6	96	209
1600 - 1700	140	103	0	0	0	7	3	0	0	0	12	113	265
1700 - 1800	144	117	0	0	0	9	4	0	0	0	15	131	289
1800 - 1900	108	114	0	0	0	2	3	0	0	0	10	119	238
1900 - 2000	85	90	0	0	0	5	3	0	0	0	4	97	187
2000 - 2100	77	75	1	0	0	4	2	0	0	0	3	82	162
2100 - 2200	68	52	1	0	0	5	1	0	0	0	4	61	133
2200 - 2300	52	44	1	0	0	1	1	1	0	0	3	47	102
2300 - 2400	27	18	0	0	0	1	1	0	0	0	2	21	49
2400 - 0100	15	4	0	0	0	1	0	0	0	0	1	6	22
0100 - 0200	9	2	0	0	0	1	0	0	0	0	1	2	12
0200 - 0300	6	1	0	0	0	0	0	0	0	0	1	1	8
0300 - 0400	4	1	0	0	0	1	0	0	0	0	2	2	9
0400 - 0500	10	2	0	0	0	0	0	0	0	0	2	2	14
0500 - 0600	390	306	1	0	0	20	5	1	0	0	27	334	750
Total	2,371	1,751	8	2	1	133	37	4	0	1	158	1,936	4,465

FORMULIR PERHITUNGAN LALU-LINTAS

Direction : 4

Pukul	1	2	3	4	5	6	7	8	9	10	11	TOTAL	
	Sepeda Motor, Scooter/ Vespa	Sedan, Jeep, Kijang, Taxi, Station-Wagon	Bis Kecil, (Mikrolet, Angkot) Elf	Bis Sedang	Bis Besar	Pick up	Truck 3/4 ton (Colt Diesel) Truck 2-AS	Truck 3 As	Truck 4 As	Truck 5 As atau lebih	Sepeda, Becak, Gerobak	2 - 10 Without Motorcycle Non Motorized	1 - 11 With Motorcycle Motorized
0600 - 0700	81	45	0	0	0	5	0	0	0	0	11	50	141
0700 - 0800	124	44	0	0	0	3	0	0	0	0	16	47	186
0800 - 0900	96	85	0	0	0	5	0	0	0	0	7	90	193
0900 - 1000	89	43	0	0	0	6	0	0	0	0	7	50	145
1000 - 1100	78	51	0	0	0	7	0	0	0	0	4	58	140
1100 - 1200	71	33	0	0	0	7	0	0	0	0	3	41	115
1200 - 1300	78	62	1	0	0	6	0	0	0	0	4	68	150
1300 - 1400	78	41	0	0	0	5	0	0	0	0	3	46	126
1400 - 1500	74	27	0	0	0	7	0	0	0	0	3	35	112
1500 - 1600	87	31	0	0	0	9	1	0	0	0	4	41	131
1600 - 1700	128	36	0	0	0	8	0	0	0	0	5	45	178
1700 - 1800	149	29	0	0	0	8	0	0	0	0	6	37	193
1800 - 1900	84	25	0	0	0	3	1	0	0	0	2	29	115
1900 - 2000	57	24	0	0	0	1	0	0	0	0	2	25	84
2000 - 2100	59	12	0	0	0	2	1	0	0	0	2	14	74
2100 - 2200	33	8	0	0	0	5	0	0	0	0	1	13	47
2200 - 2300	16	4	0	0	0	0	0	0	0	0	1	5	22
2300 - 2400	9	2	0	0	0	1	0	0	0	0	1	3	13
2400 - 0100	9	1	0	0	0	1	0	0	0	0	0	1	11
0100 - 0200	7	1	0	0	0	0	0	0	0	0	0	1	8
0200 - 0300	1	1	0	0	0	1	0	0	0	0	1	1	3
0300 - 0400	3	0	0	0	0	0	0	0	0	0	1	0	4
0400 - 0500	4	0	0	0	0	0	0	0	0	0	2	1	7
0500 - 0600	17	3	1	0	0	0	0	0	0	0	6	4	27
Total	1,431	607	3	0	0	88	6	0	0	0	91	704	2,226

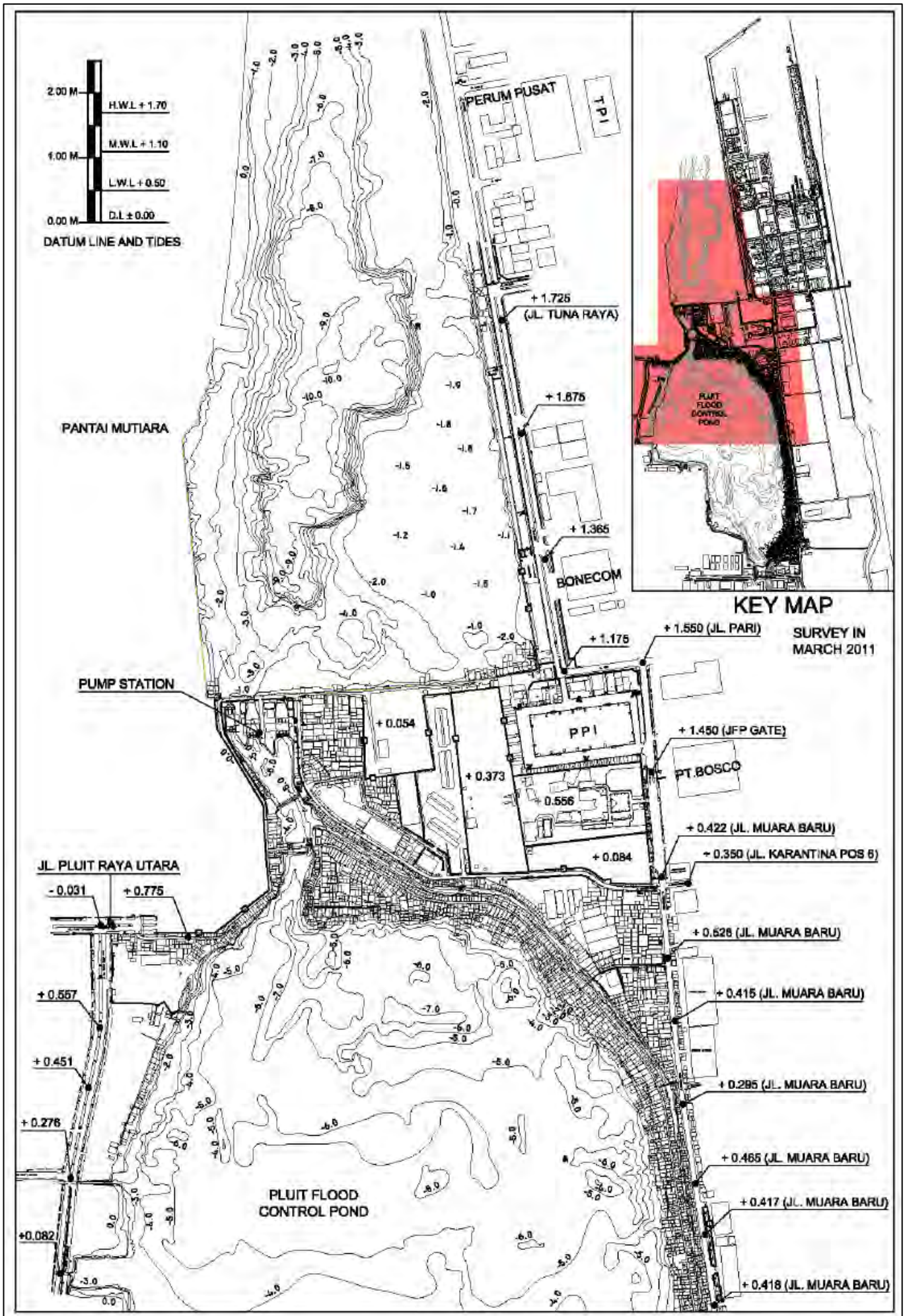
FORMULIR PERHITUNGAN LALU-LINTAS

Direction : 5

Pukul	1	2	3	4	5	6	7	8	9	10	11	TOTAL	
	Sepeda Motor, Scooter/ Vespa	Sedan, Jeep, Kijang, Taxi, Station-Wagon	Bis Kecil, (Mikrolet, Angkot) Elf	Bis Sedang	Bis Besar	Pick up	Truck 3/4 ton (Colt Diesel) Truck 2-AS	Truck 3 As	Truck 4 As	Truck 5 As atau lebih	Sepeda, Becak, Gerobak	2 - 10 Without Motorcycle & Non Motorized	1 - 11 With Motorcycle & Motorized
06:00 - 07:00	64	79	0	0	0	1	1	0	0	0	7	82	153
07:00 - 08:00	69	116	0	0	0	2	0	0	0	0	6	118	193
08:00 - 09:00	72	138	0	0	0	3	0	0	0	0	6	142	220
09:00 - 10:00	63	137	0	0	0	2	1	0	0	0	4	140	207
10:00 - 11:00	59	104	0	0	0	2	1	0	0	0	6	106	171
11:00 - 12:00	52	87	0	0	0	4	1	0	0	0	5	92	150
12:00 - 13:00	38	78	0	0	0	1	0	0	0	0	2	80	120
13:00 - 14:00	43	67	0	0	0	1	1	0	0	0	4	69	116
14:00 - 15:00	41	55	0	0	0	3	2	0	0	0	7	60	108
15:00 - 16:00	53	59	0	0	0	2	1	0	0	0	7	61	121
16:00 - 17:00	79	59	0	0	0	2	2	0	0	0	8	63	150
17:00 - 18:00	91	49	0	0	0	2	1	0	0	0	7	53	151
18:00 - 19:00	96	60	0	0	0	1	2	0	0	0	5	63	164
19:00 - 20:00	69	50	0	0	0	1	2	0	0	0	5	55	128
20:00 - 21:00	53	40	1	0	0	1	2	0	0	0	3	44	100
21:00 - 22:00	31	20	0	0	0	1	1	0	0	0	2	23	56
22:00 - 23:00	29	13	0	0	0	1	1	0	0	0	1	15	46
23:00 - 24:00	6	4	0	0	0	1	1	0	0	0	1	6	13
24:00 - 01:00	4	2	0	0	0	0	0	0	0	0	1	2	7
01:00 - 02:00	5	2	1	0	0	0	0	0	0	0	0	4	8
02:00 - 03:00	3	1	0	0	0	1	0	0	0	0	1	1	5
03:00 - 04:00	3	0	0	0	0	0	0	0	0	0	2	1	5
04:00 - 05:00	5	1	0	0	0	0	1	0	0	0	3	3	11
05:00 - 06:00	10	4	1	0	0	0	0	0	0	0	2	5	17
Total	1,038	1,226	3	1	0	33	22	2	0	0	95	1,287	2,420

APPENDIX 8

Topographic/Hydrographic Survey Map



Topographic and Hydrographic Survey