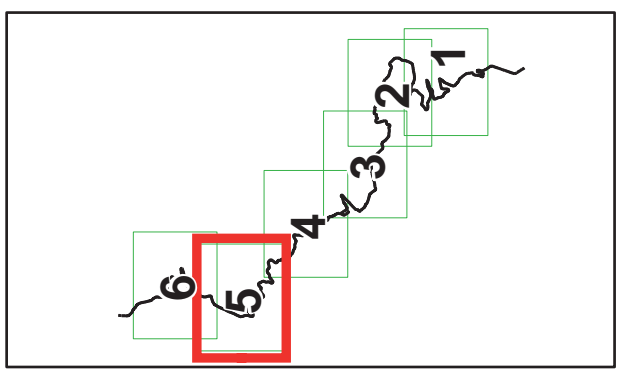
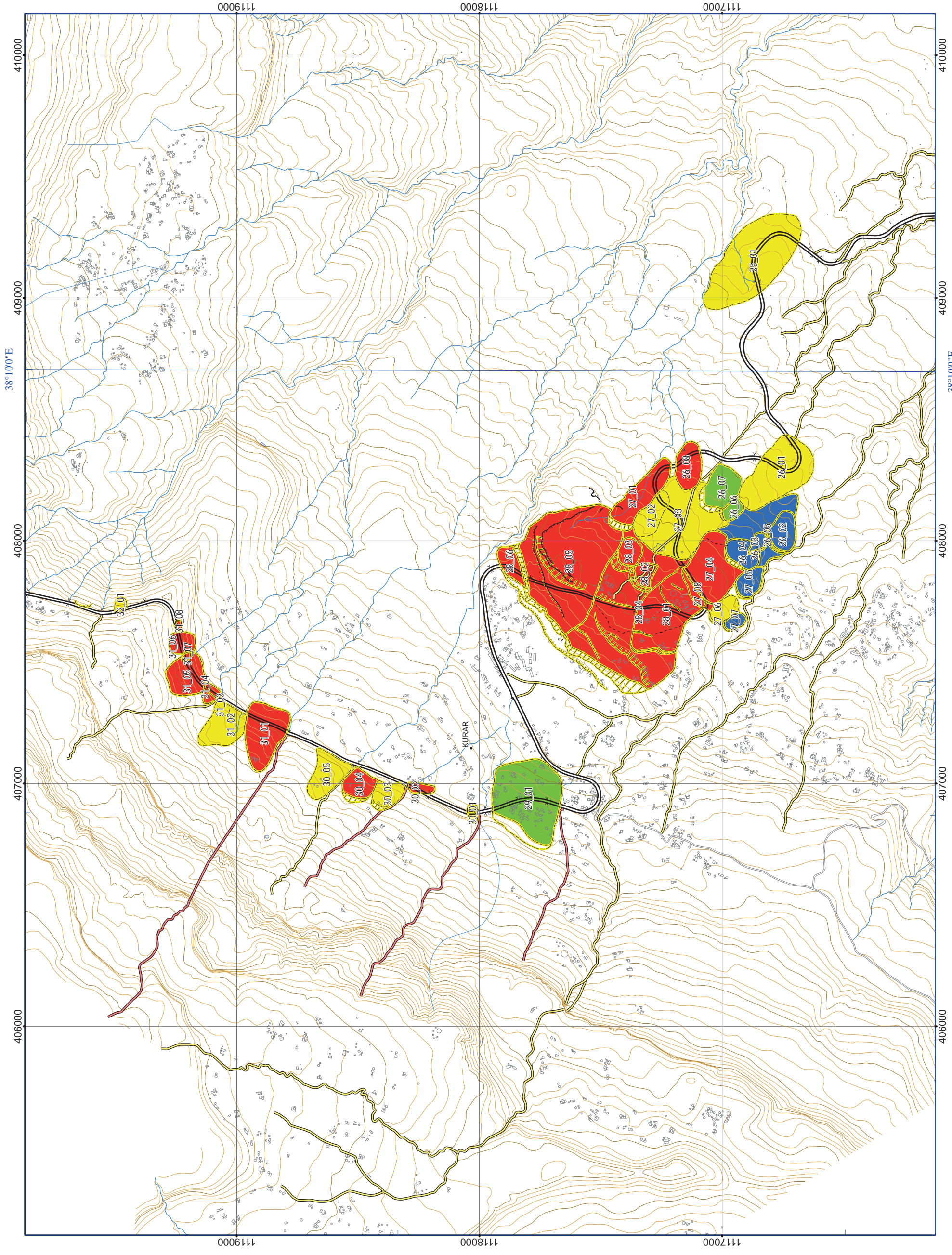
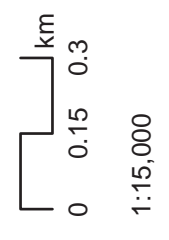


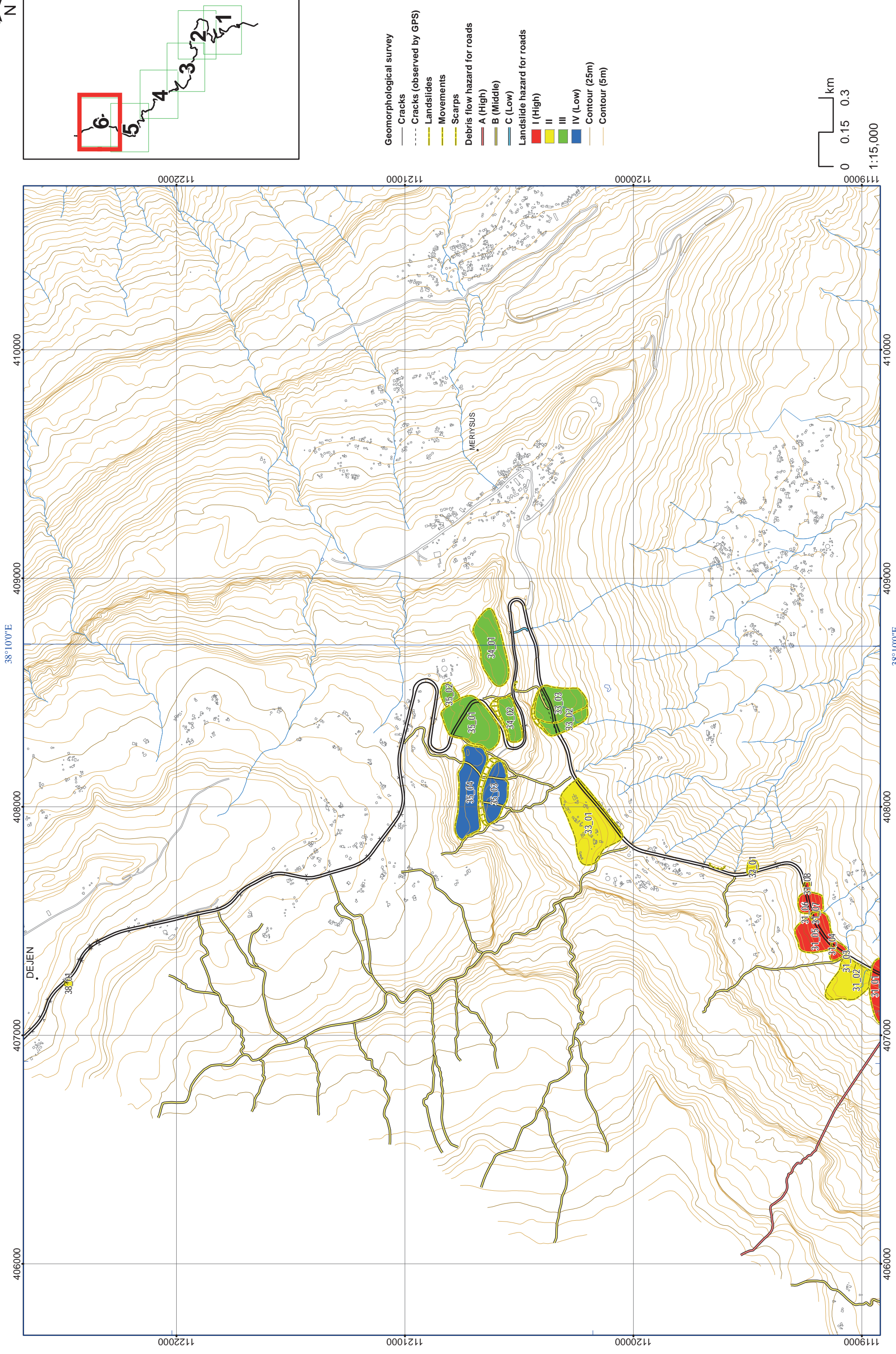
# HAZARD RANK OF LANDSLIDE AND DEBRIS FLOW FOR ROADS (FR January 2012)



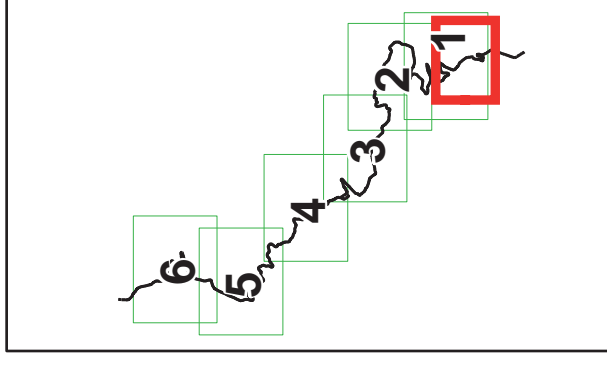
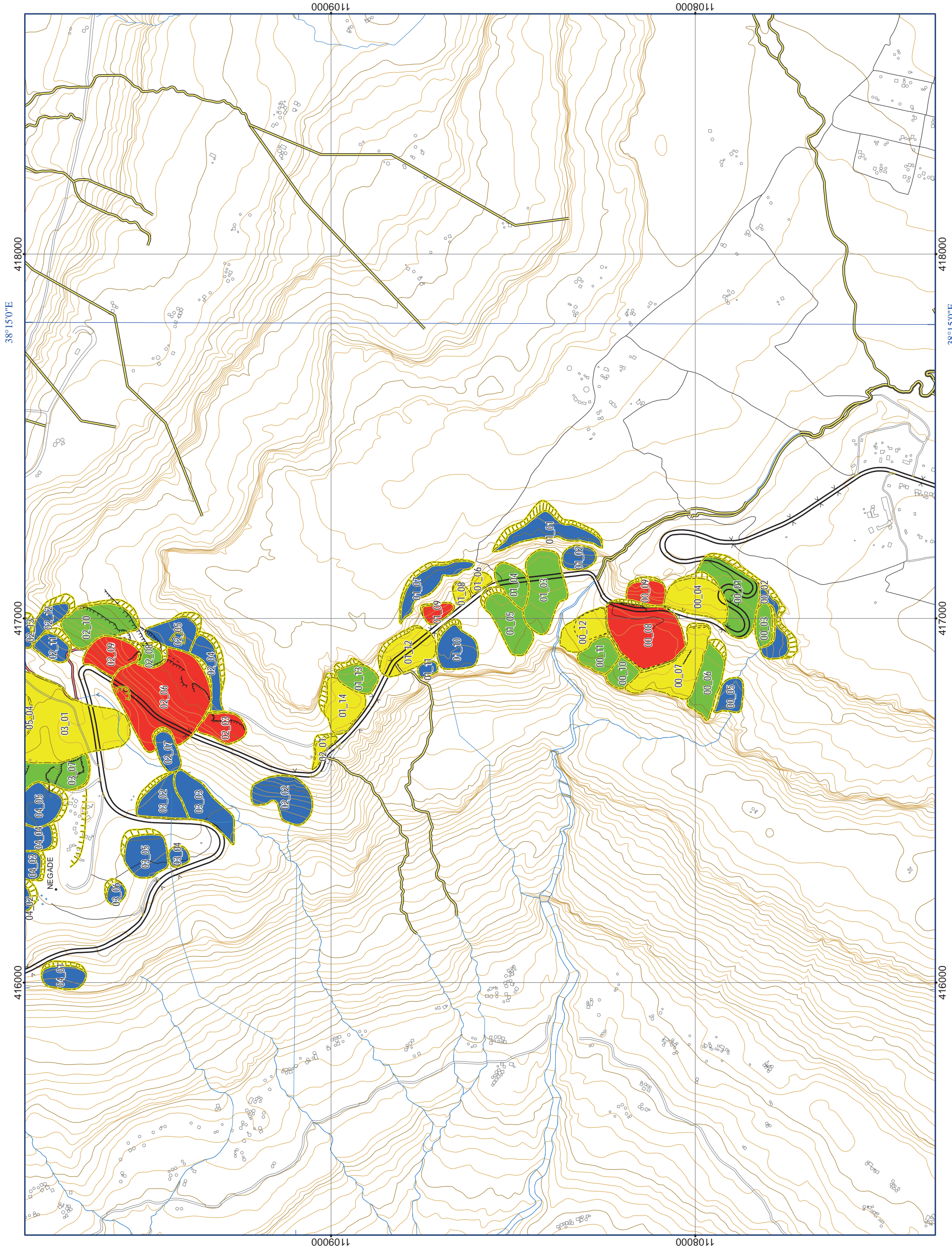
- Geomorphological survey**
- Cracks
  - - - Cracks (observed by GPS)
  - Landslides
  - Movements
  - Scarps
- Debris flow hazard for roads**
- A (High)
  - B (Middle)
  - C (Low)
- Landslide hazard for roads**
- I (High)
  - II
  - III
  - IV (Low)
- Contour (25m)
- Contour (5m)



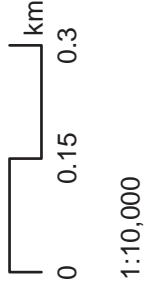
# HAZARD RANK OF LANDSLIDE AND DEBRIS FLOW FOR ROADS (FR January 2012)



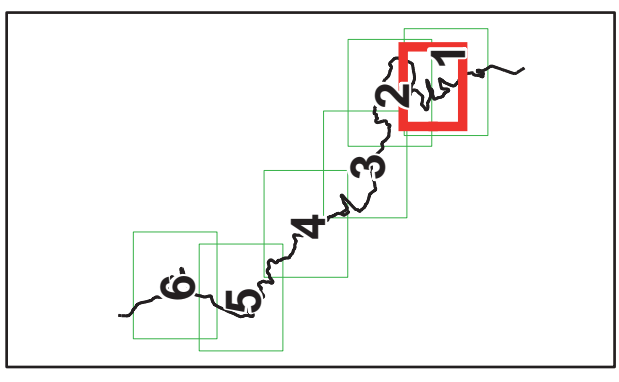
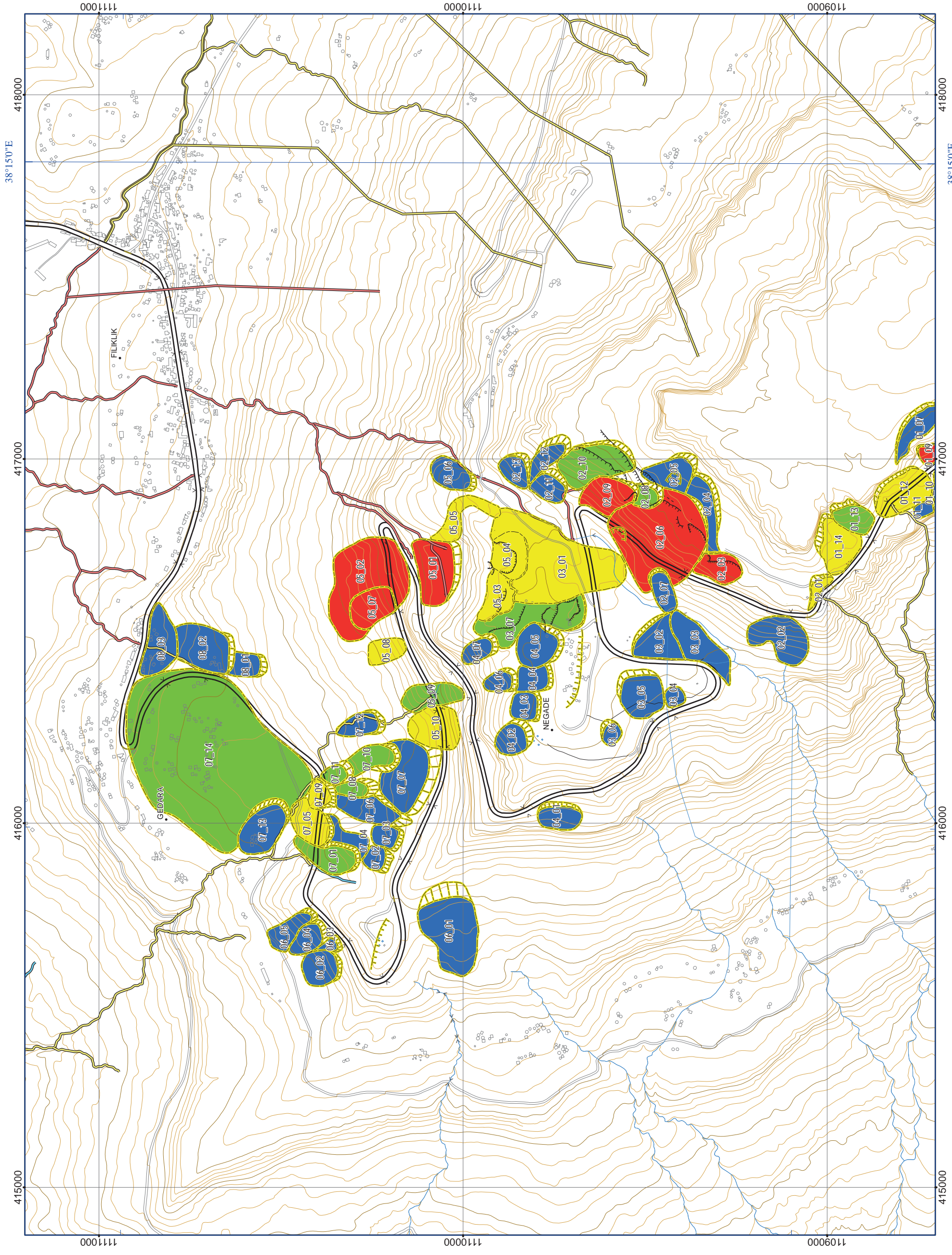
# HAZARD RANK OF LANDSLIDE AND DEBRIS FLOW FOR ROADS (FR January 2012)



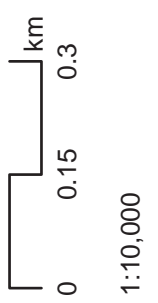
- Geomorphological survey**
- Cracks
  - Cracks (observed by GPS)
  - Landslides
  - Movements
  - Scarp
- Debris flow hazard for roads**
- A (High)
  - B (Middle)
  - C (Low)
- Landslide hazard for roads**
- I (High)
  - II
  - III
  - IV (Low)
  - Contour (25m)
  - Contour (5m)



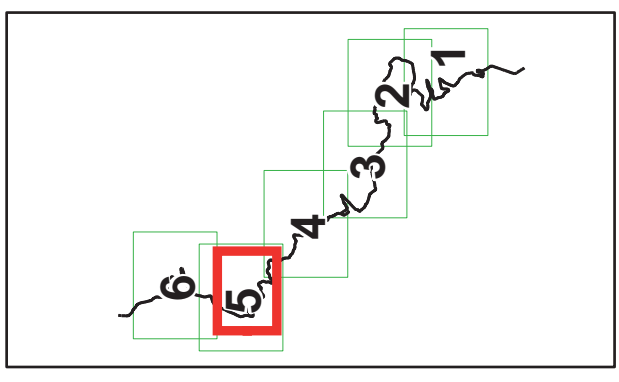
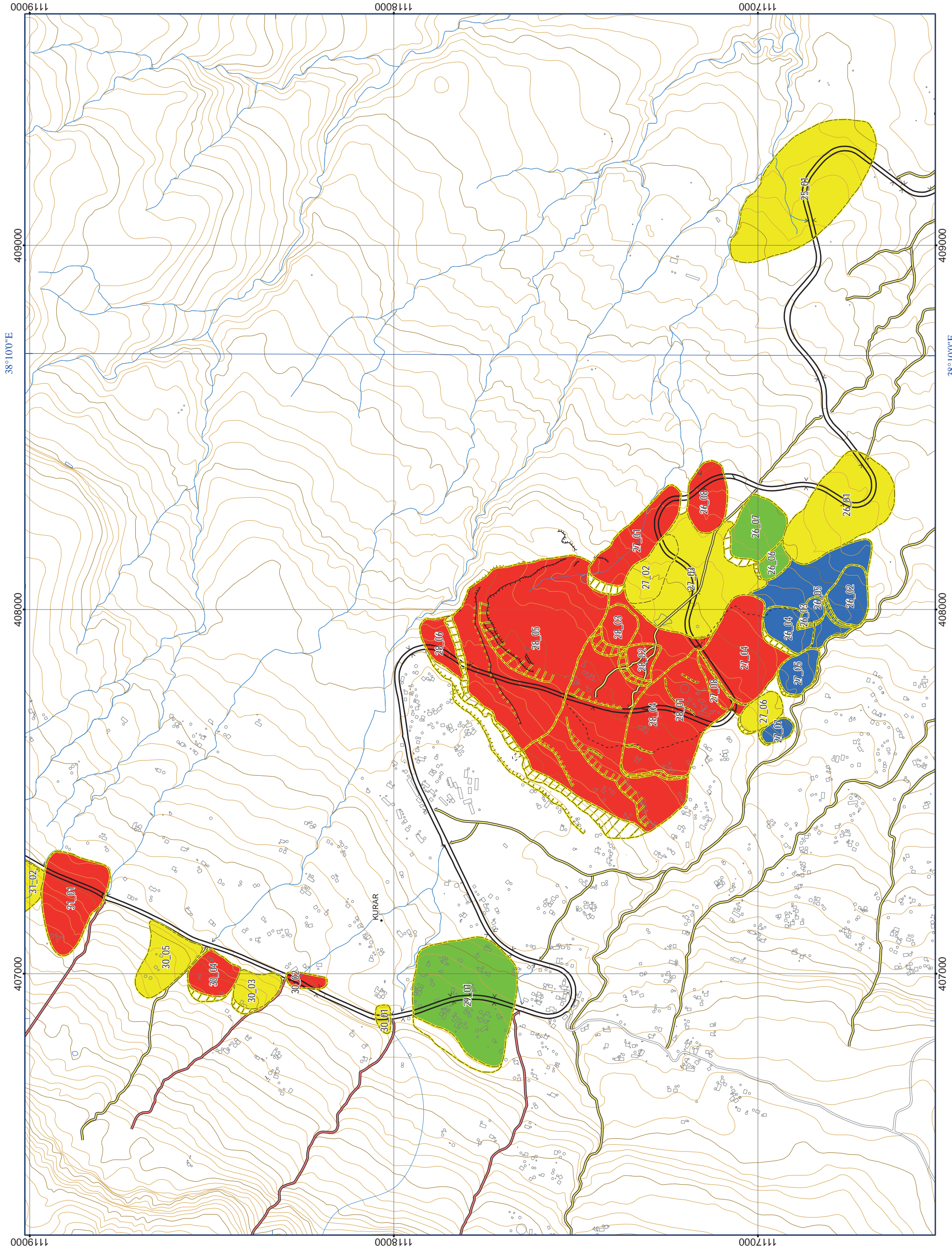
# HAZARD RANK OF LANDSLIDE AND DEBRIS FLOW FOR ROADS (FR January 2012)



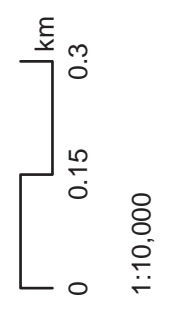
- Geomorphological survey**
- Cracks
  - - - Cracks (observed by GPS)
  - Landslides
  - Movements
  - Scarps
- Debris flow hazard for roads**
- A (High)
  - B (Middle)
  - C (Low)
- Landslide hazard for roads**
- I (High)
  - II
  - III
  - IV (Low)
  - Contour (25m)
  - Contour (5m)



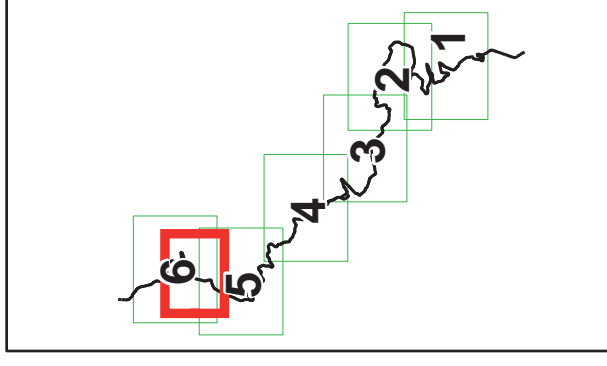
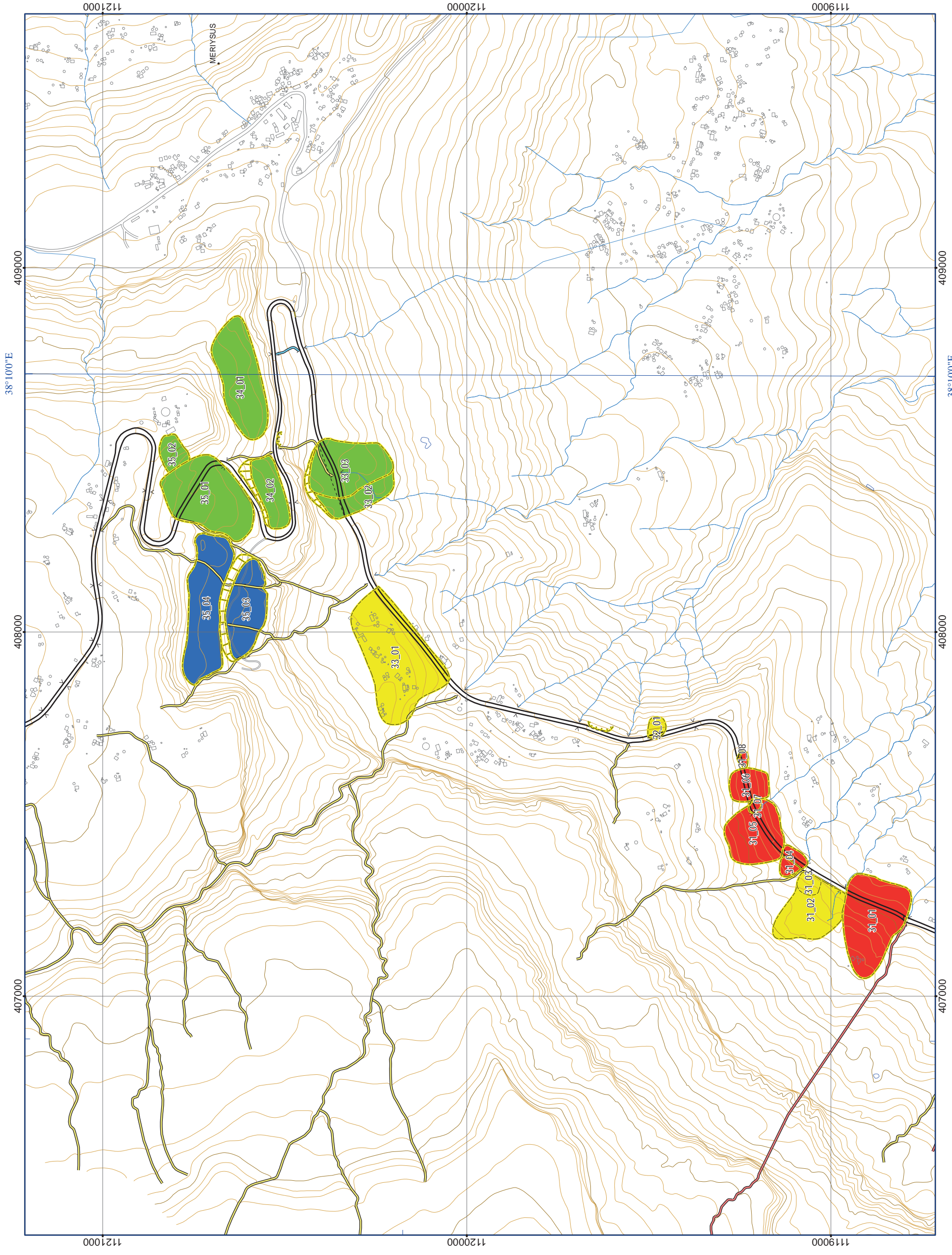
# HAZARD RANK OF LANDSLIDE AND DEBRIS FLOW FOR ROADS (FR January 2012)



- Geomorphological survey**
- Cracks
  - - - Cracks (observed by GPS)
  - Landslides
  - Movements
  - Scarps
- Debris flow hazard for roads**
- A (High)
  - B (Middle)
  - C (Low)
- Landslide hazard for roads**
- I (High)
  - II
  - III
  - IV (Low)
- Contour (25m)
- Contour (5m)



# HAZARD RANK OF LANDSLIDE AND DEBRIS FLOW FOR ROADS (FR January 2012)



- Geomorphological survey**
- Cracks
  - - - Cracks (observed by GPS)
  - Landslides
  - Movements
  - Scarps
- Debris flow hazard for roads**
- A (High)
  - B (Middle)
  - C (Low)
- Landslide hazard for roads**
- I (High)
  - II
  - III
  - IV (Low)
- Contour (25m)
- Contour (5m)

