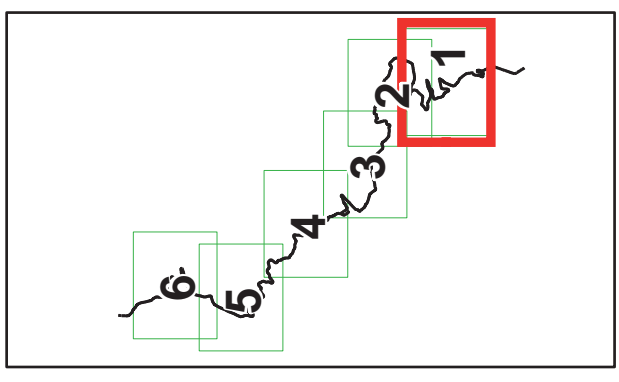
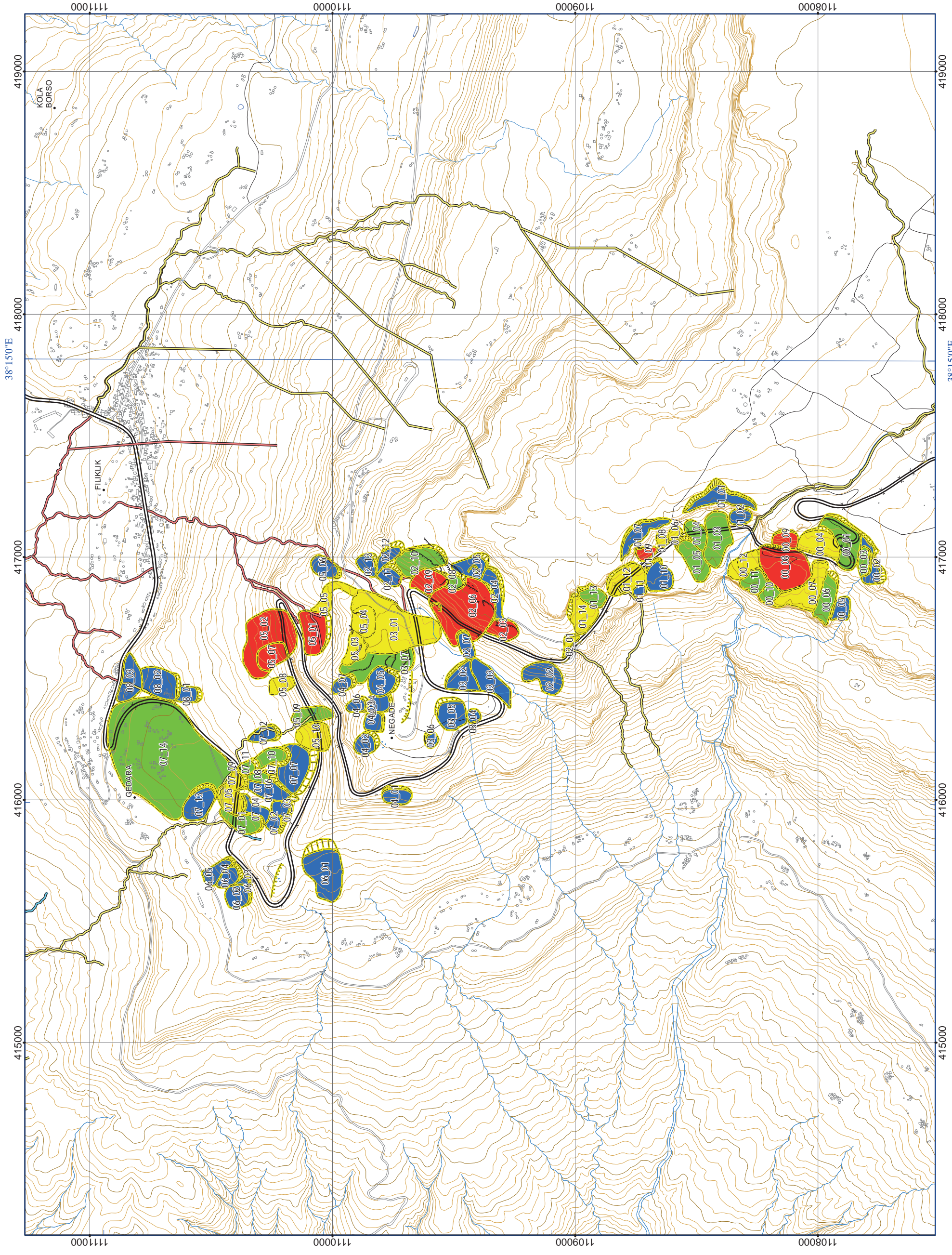
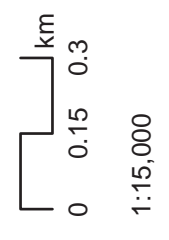


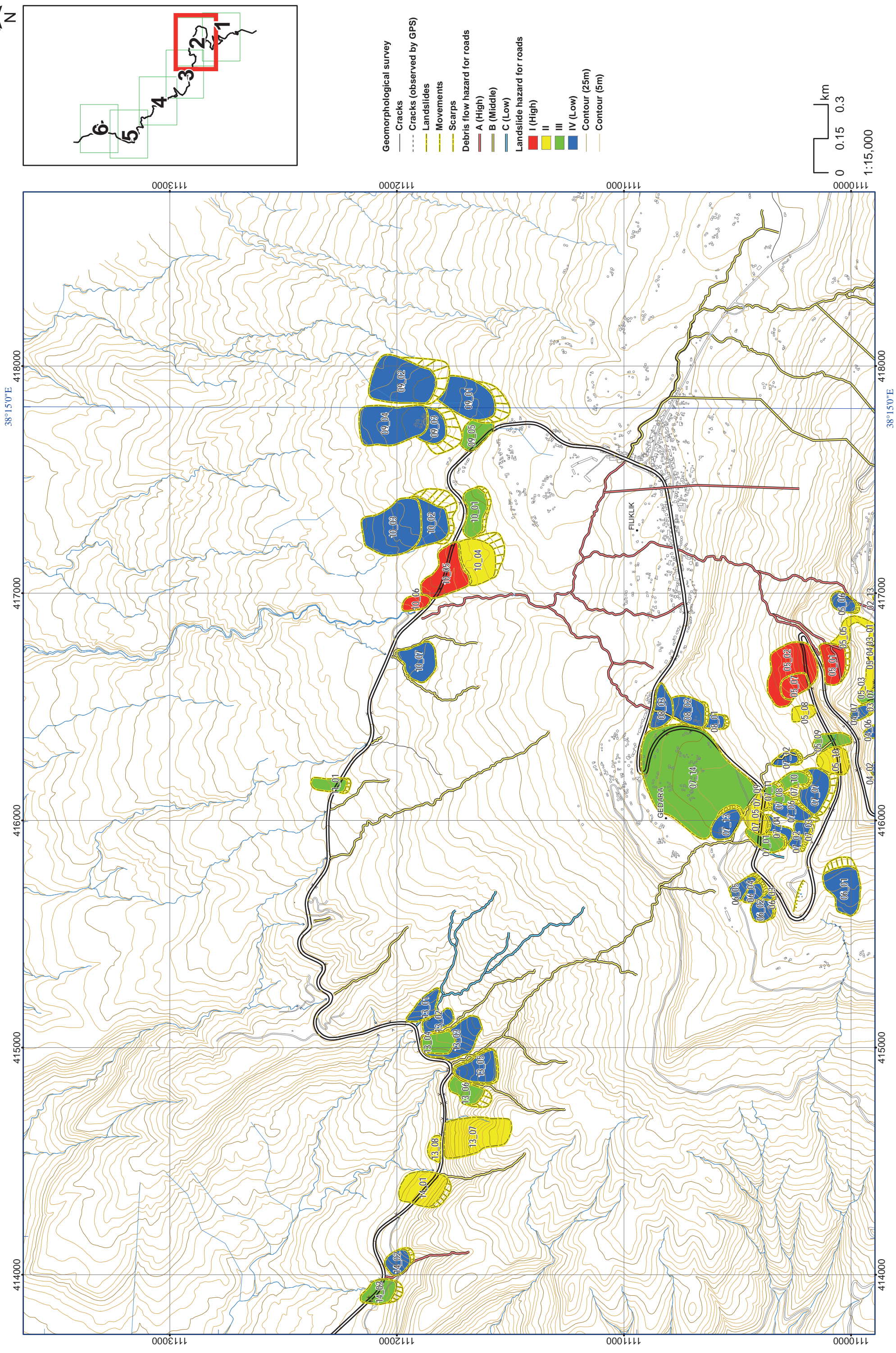
HAZARD RANK OF LANDSLIDE AND DEBRIS FLOW FOR ROADS (FR January 2012)



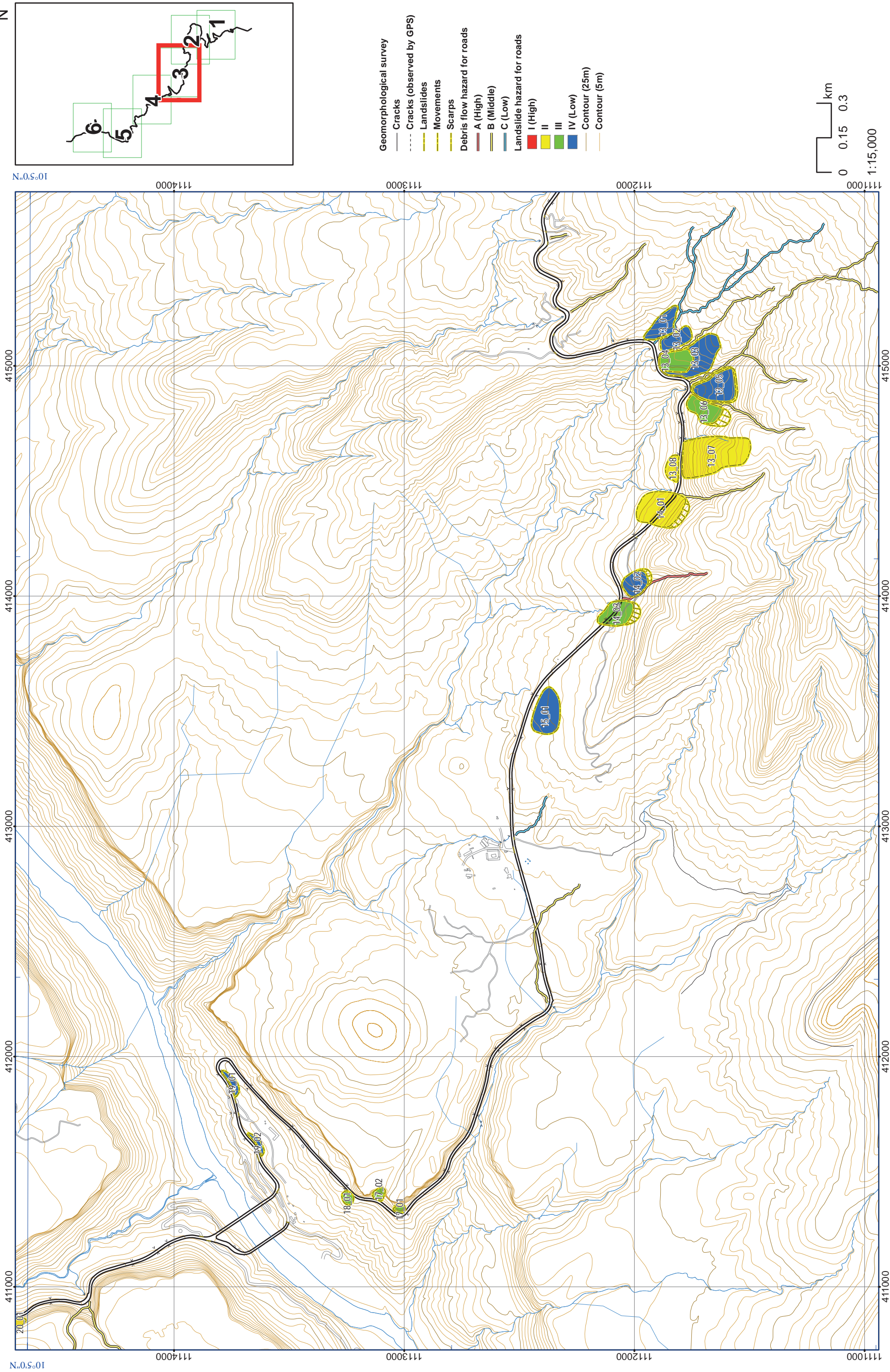
- Geomorphological survey**
- Cracks
 - - - Cracks (observed by GPS)
 - Landslides
 - Movements
 - Scarps
- Debris flow hazard for roads**
- A (High)
 - B (Middle)
 - C (Low)
- Landslide hazard for roads**
- I (High)
 - II
 - III
 - IV (Low)
- Contour (25m)
- Contour (5m)



HAZARD RANK OF LANDSLIDE AND DEBRIS FLOW FOR ROADS (FR January 2012)



HAZARD RANK OF LANDSLIDE AND DEBRIS FLOW FOR ROADS (FR January 2012)



HAZARD RANK OF LANDSLIDE AND DEBRIS FLOW FOR ROADS (FR January 2012)

