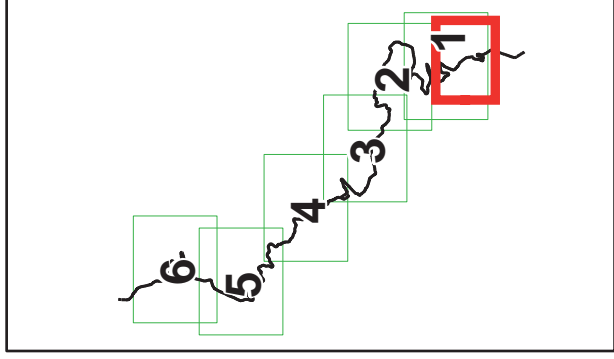
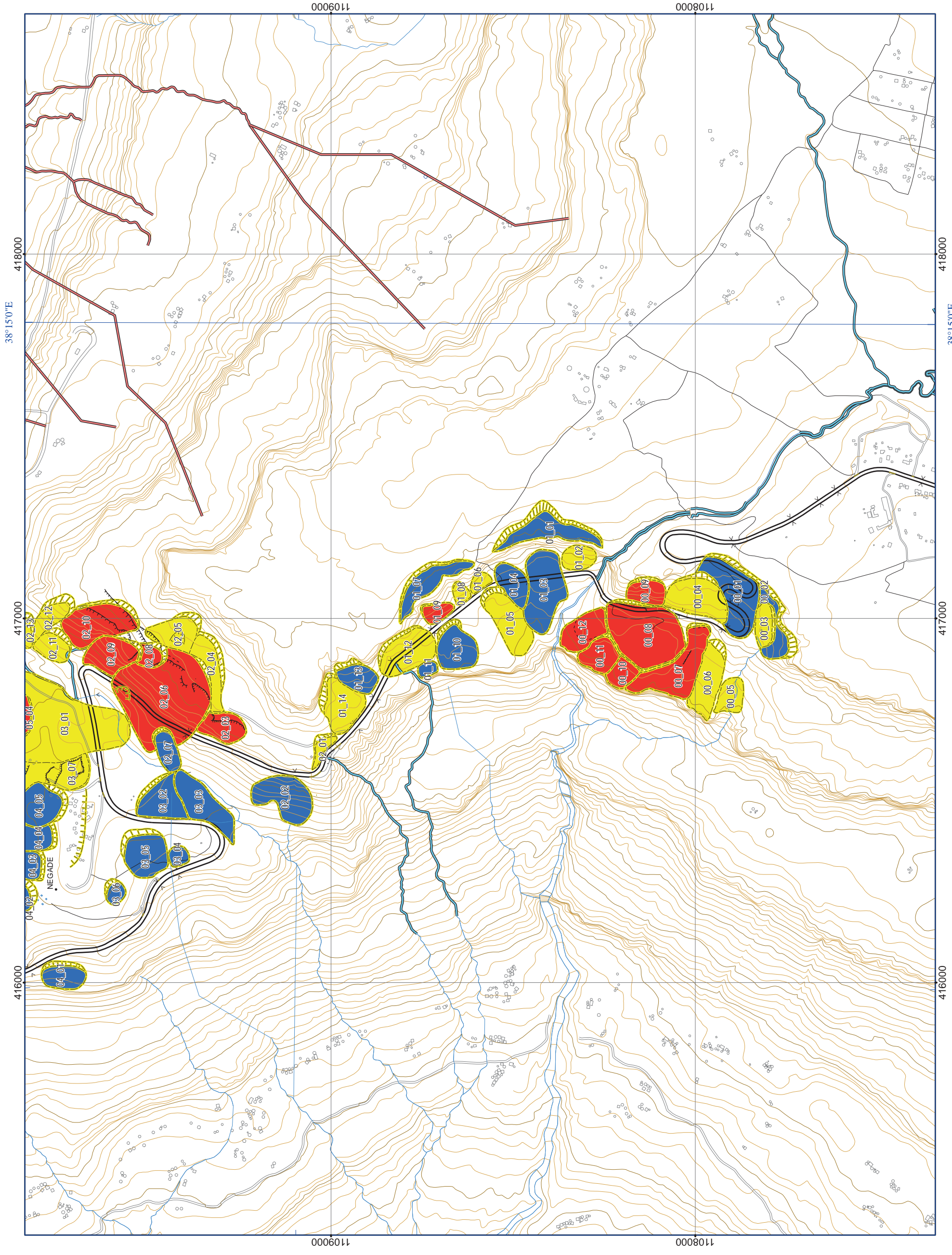
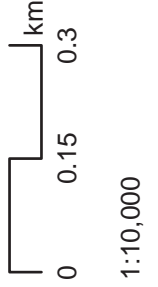


# HAZARD RANK OF LANDSLIDE AND DEBRIS FLOW BY SCORE (FR January 2012)

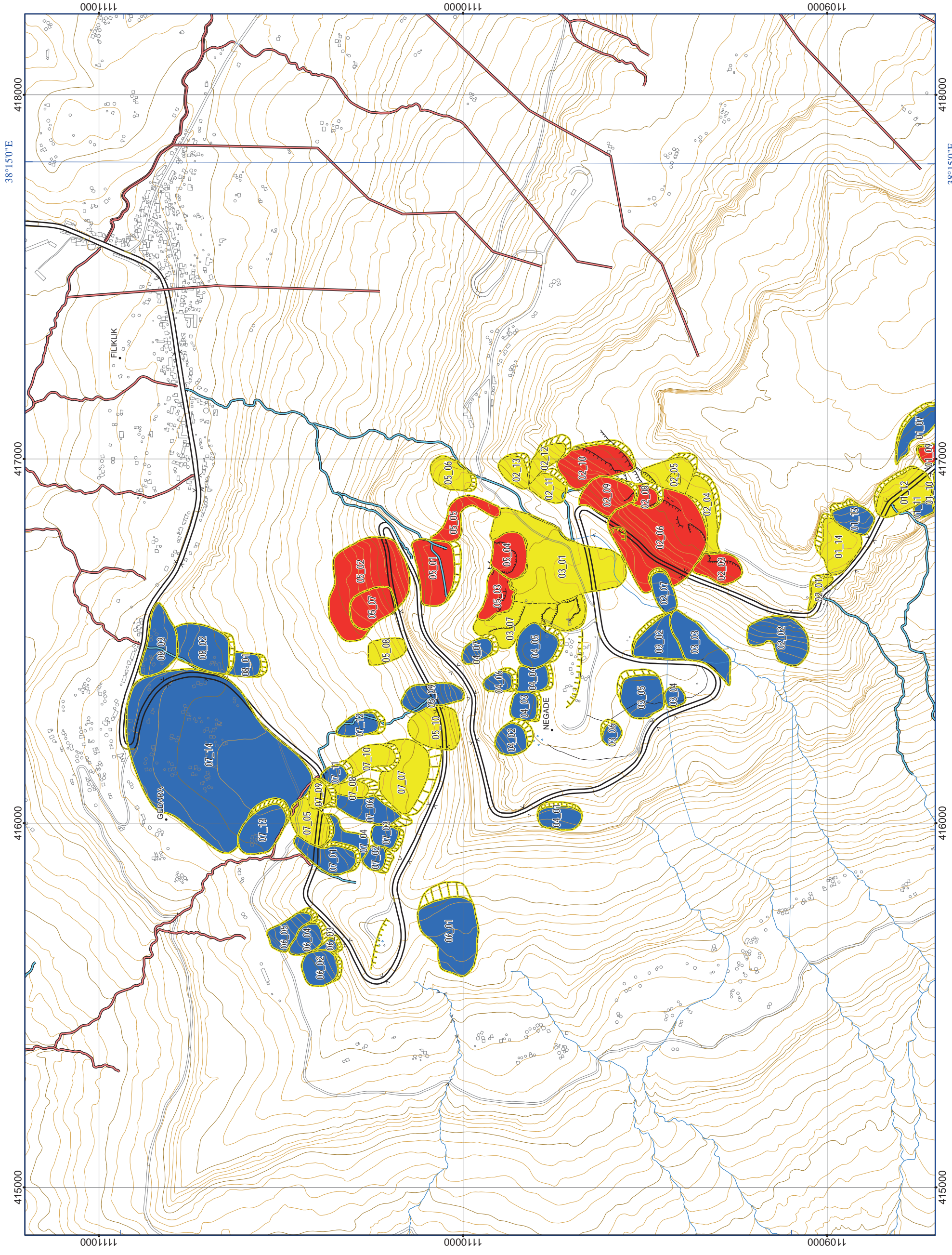


- Geomorphological survey**
- Cracks
  - - - Cracks (observed by GPS)
  - Landslides
  - Movements
  - Scarps
- Debris flow hazard by score**
- A (High)
  - B (Middle)
  - C (Low)
- Landslide hazard by score**
- A (High)
  - B (Middle)
  - C (Low)
  - Contour (25m)
  - Contour (5m)

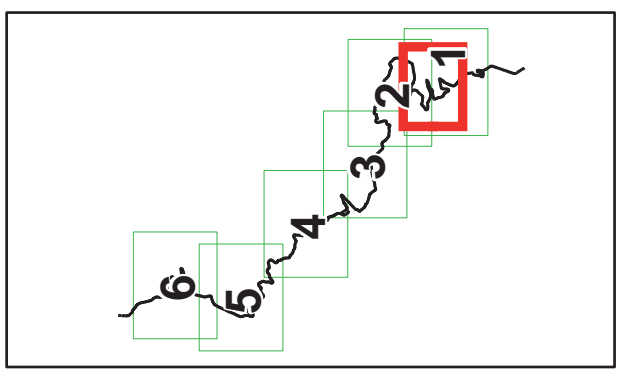
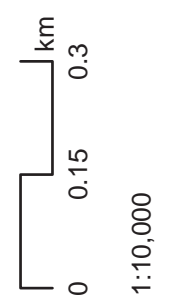




# HAZARD RANK OF LANDSLIDE AND DEBRIS FLOW BY SCORE (FR January 2012)

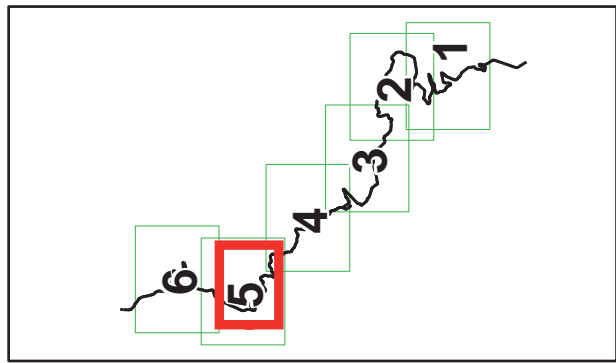
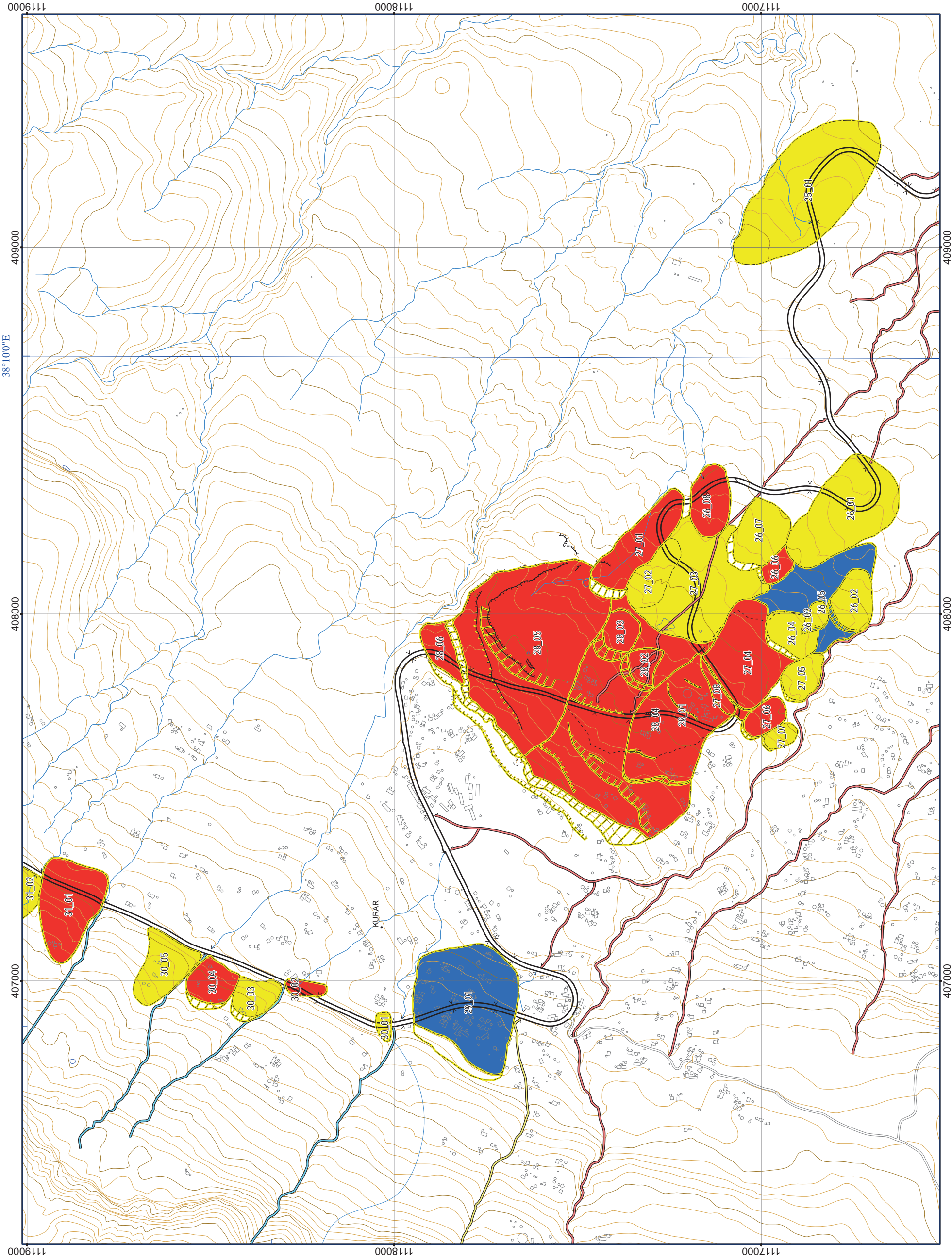


- Geomorphological survey**
- Cracks
  - - - Cracks (observed by GPS)
  - Landslides
  - Movements
  - Scarps
- Debris flow hazard by score**
- A (High)
  - B (Middle)
  - C (Low)
- Landslide hazard by score**
- A (High)
  - B (Middle)
  - C (Low)
  - Contour (25m)
  - Contour (5m)





# HAZARD RANK OF LANDSLIDE AND DEBRIS FLOW BY SCORE (FR January 2012)

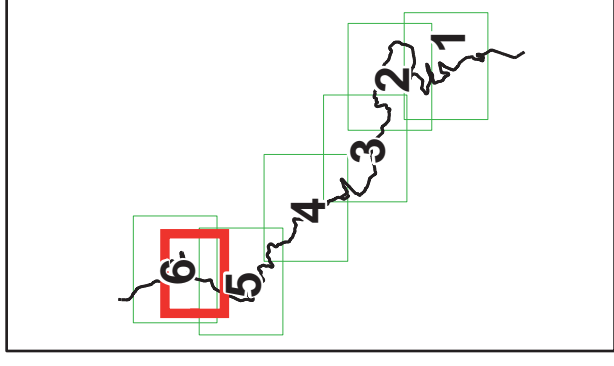
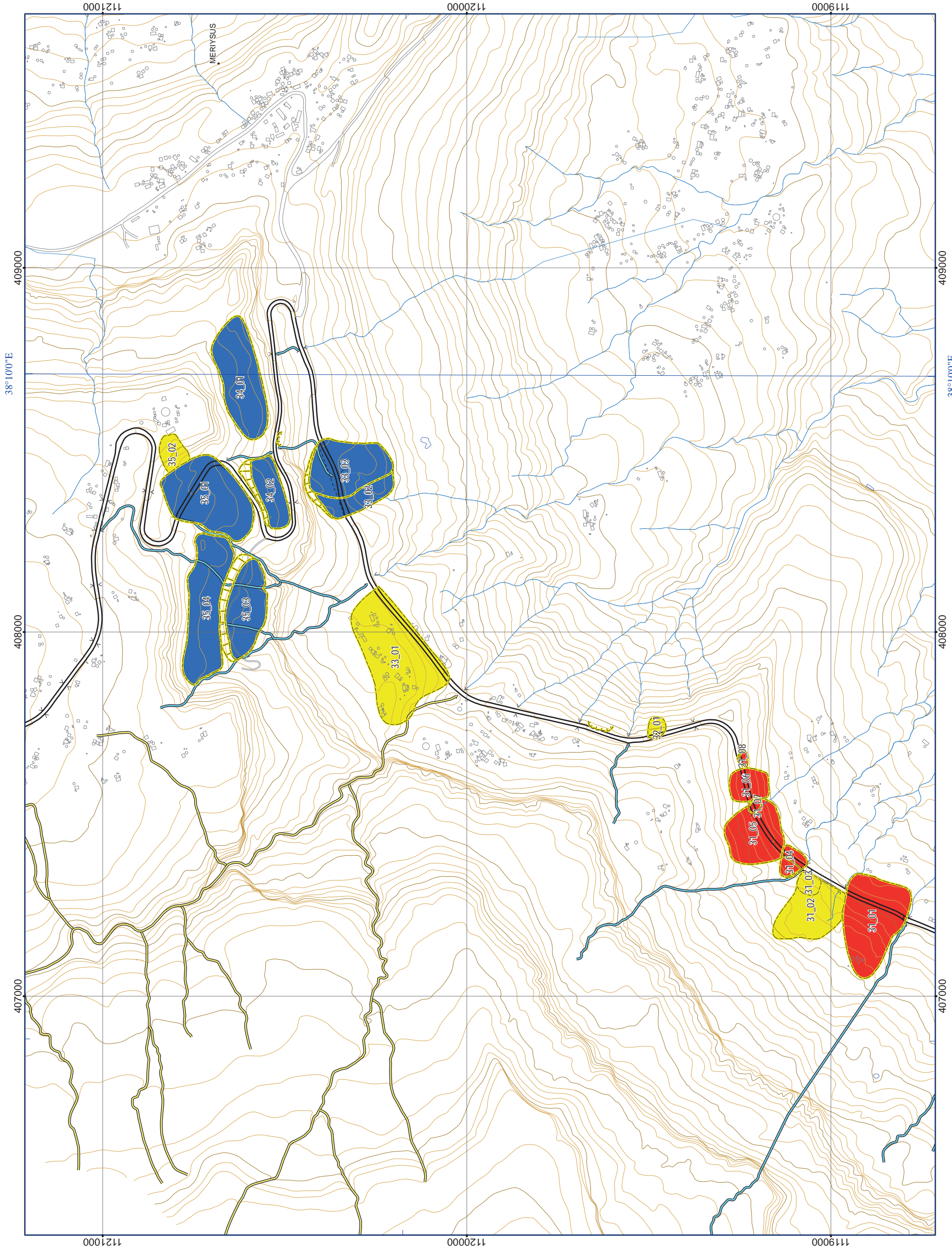


- Geomorphological survey**
- Cracks
  - Cracks (observed by GPS)
  - Landslides
  - Movements
  - Scarps
- Debris flow hazard by score**
- A (High)
  - B (Middle)
  - C (Low)
- Landslide hazard by score**
- A (High)
  - B (Middle)
  - C (Low)
  - Contour (25m)
  - Contour (5m)

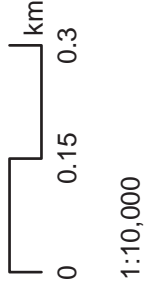




# HAZARD RANK OF LANDSLIDE AND DEBRIS FLOW BY SCORE (FR January 2012)



- Geomorphological survey**
  - Cracks
  - Cracks (observed by GPS)
  - Landslides
  - Movements
  - Scarps
- Debris flow hazard by score**
  - A (High)
  - B (Middle)
  - C (Low)
- Landslide hazard by score**
  - A (High)
  - B (Middle)
  - C (Low)
- Contour (25m)
- Contour (5m)





18. Hazard map (Rank of landslide and debris flow for roads)





# HAZARD RANK OF LANDSLIDE AND DEBRIS FLOW FOR ROADS (FR January 2012)

