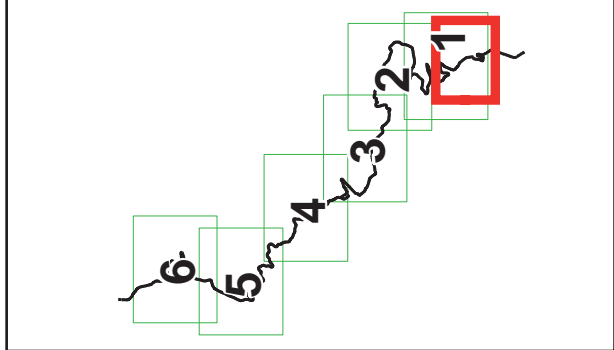
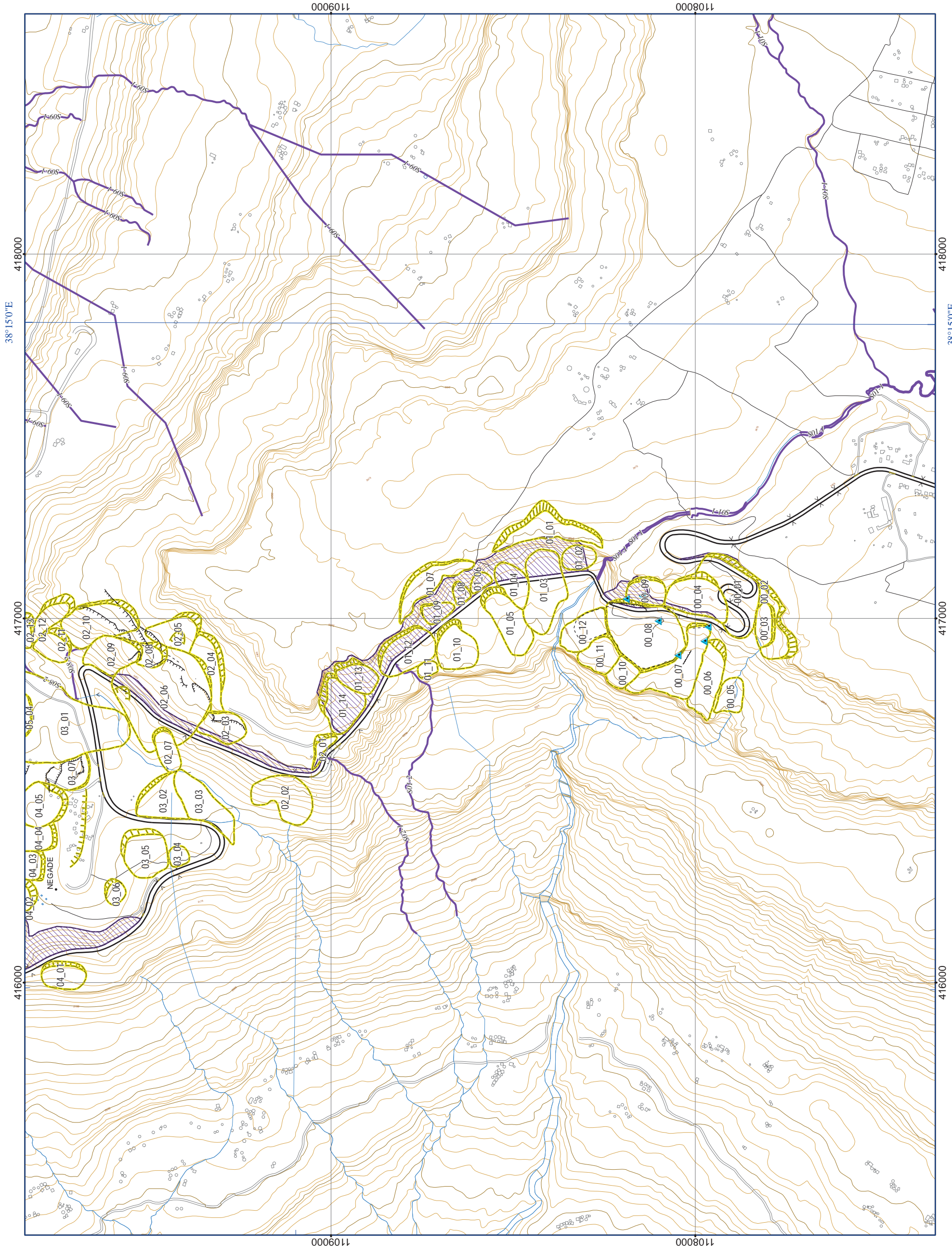
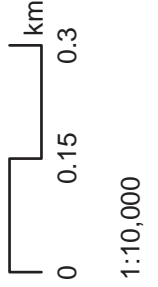


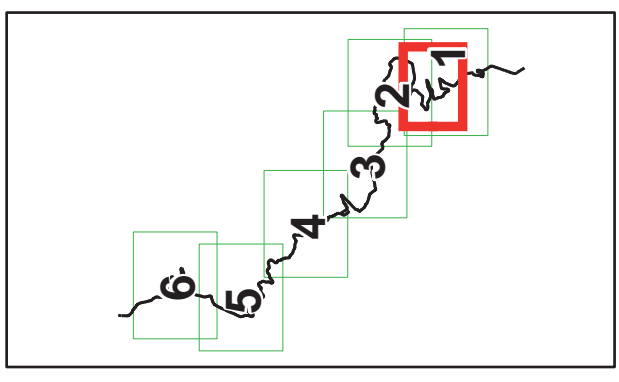
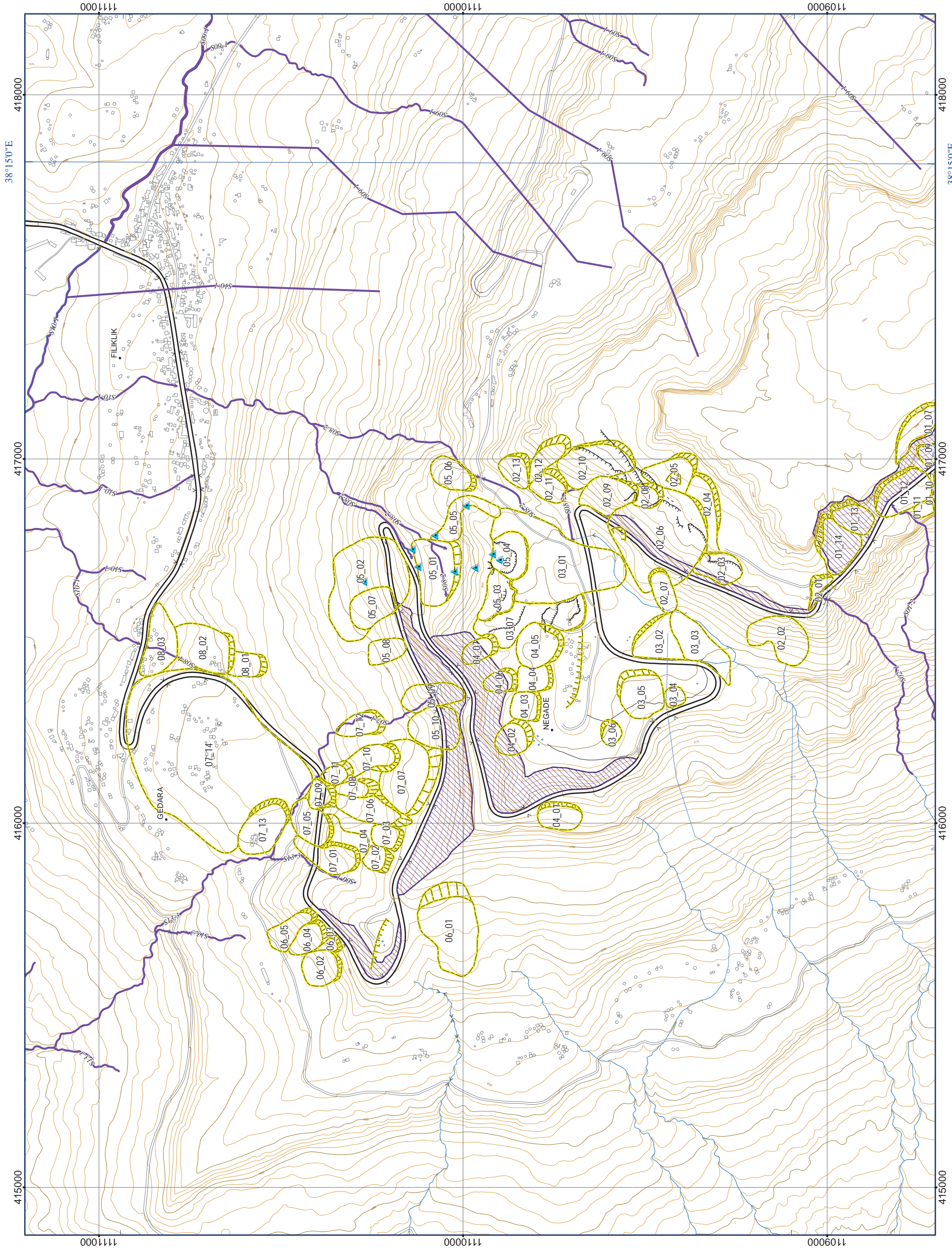
LANDSLIDE, ROCK FALL AND DEBRIS FLOW DISTRIBUTION MAP (FR January 2012)



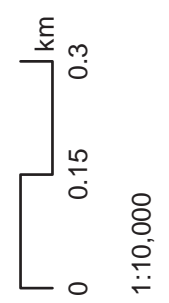
- Geomorphological survey**
- Cracks
 - - - Cracks (observed by GPS)
 - Landslides
 - Movements
 - Scarps
 - ▨ Rock fall scarp
 - High risk debris flow streams
 - High risk debris flow streams
 - Contour (25m)
 - Contour (5m)
 - ▲ Springs



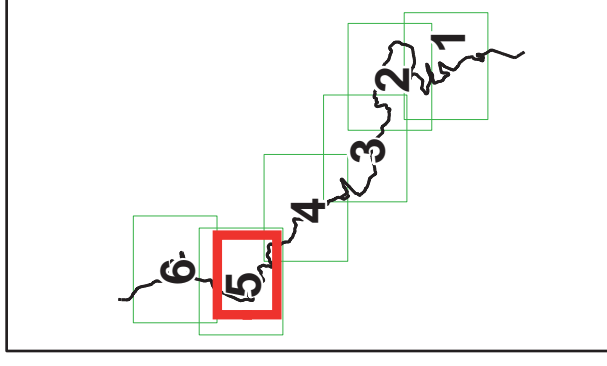
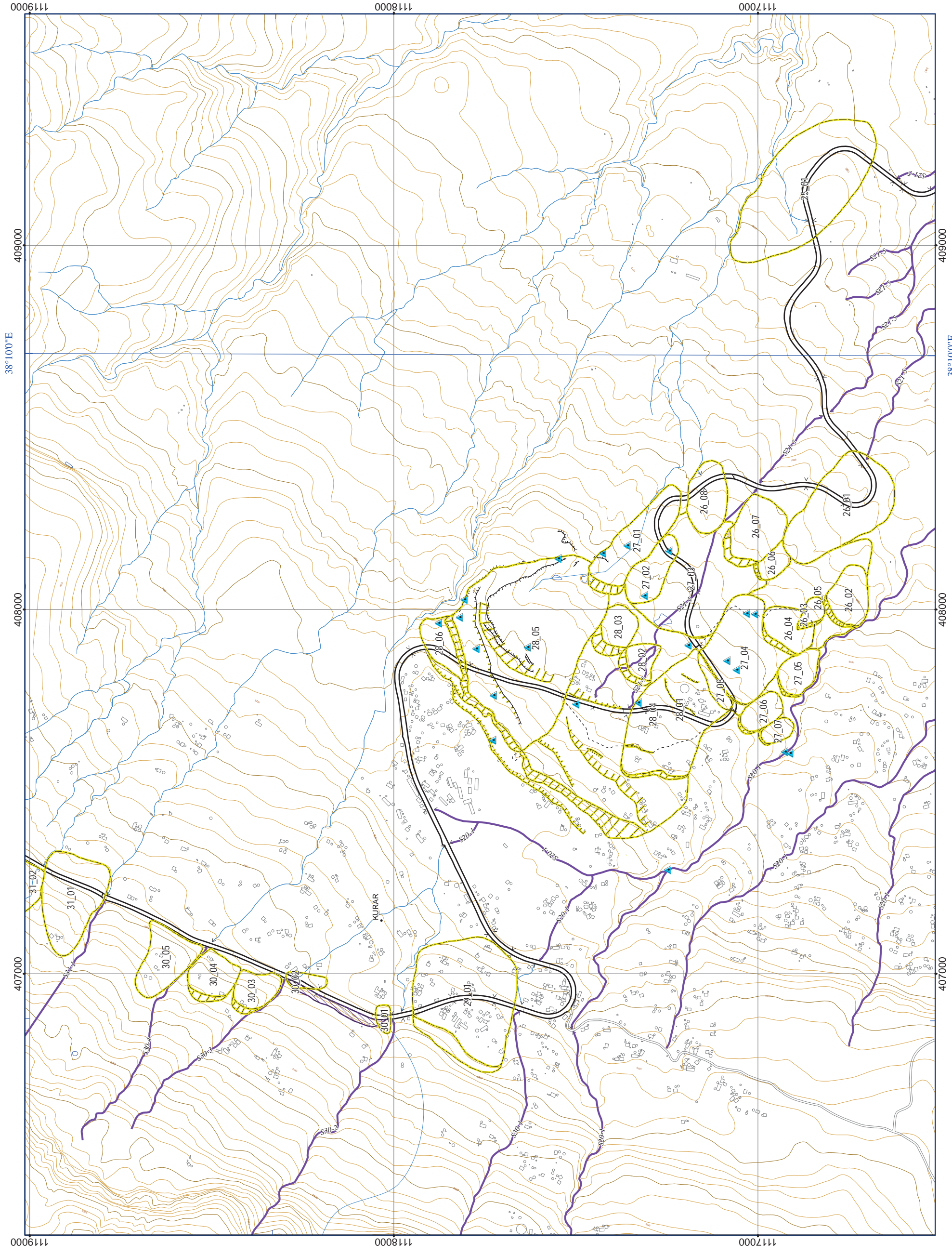
LANDSLIDE, ROCK FALL AND DEBRIS FLOW DISTRIBUTION MAP (FR January 2012)



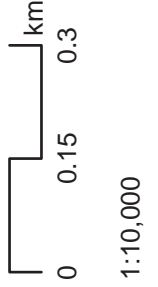
- Geomorphological survey**
- Cracks
 - - - Cracks (observed by GPS)
 - Landslides
 - Movements
 - Scarps
 - ▨ Rock fall scarp
 - ▨ High risk debris flow streams
 - High risk debris flow streams
 - Contour (25m)
 - Contour (5m)
 - ▲ Springs



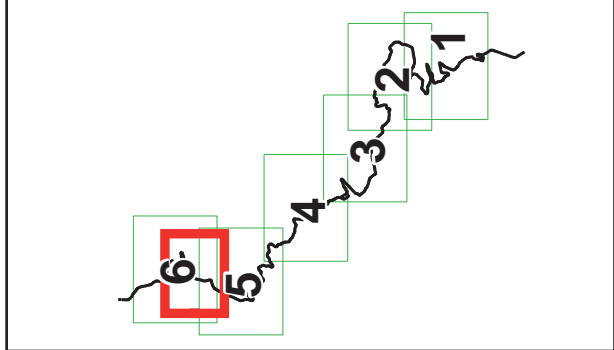
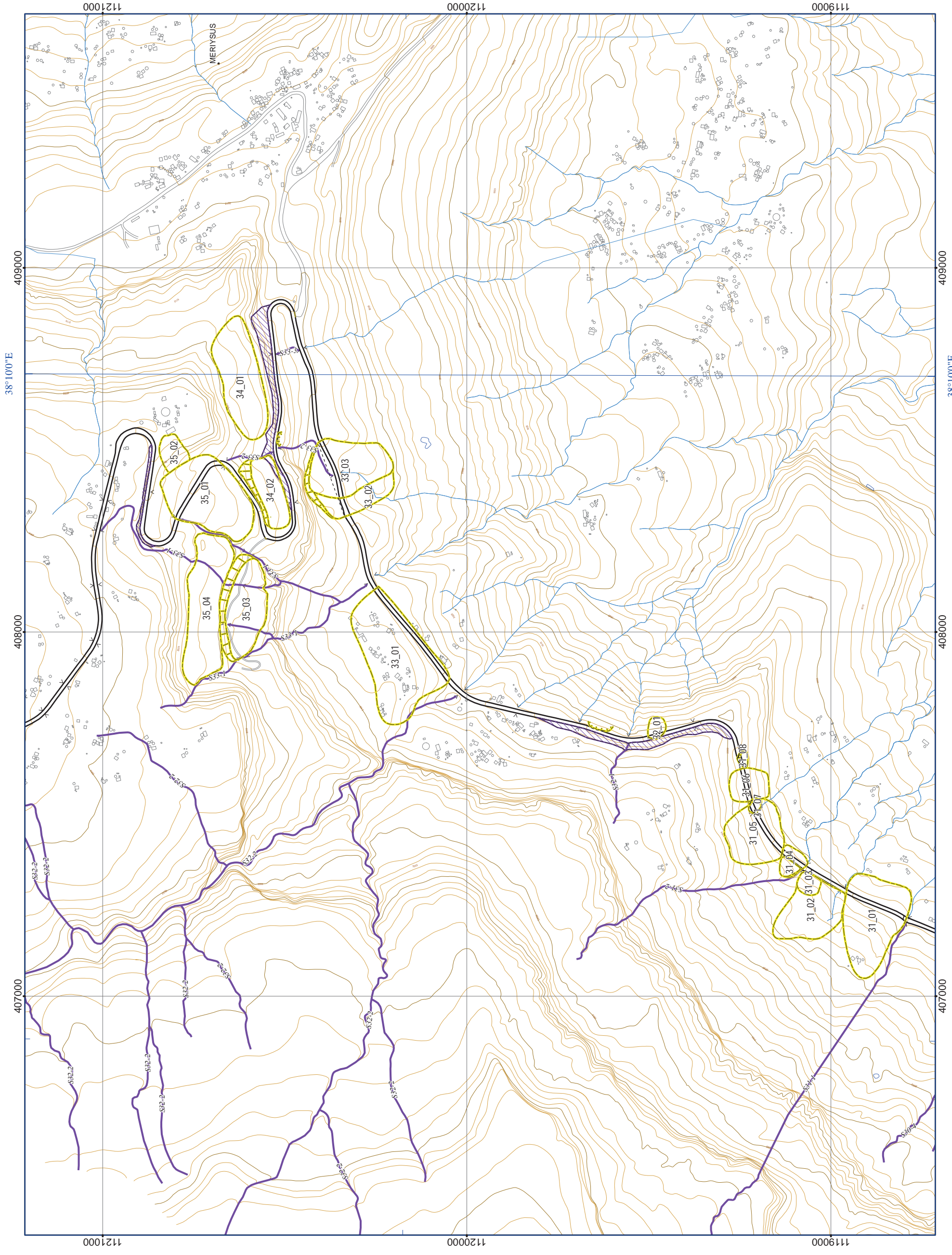
LANDSLIDE, ROCK FALL AND DEBRIS FLOW DISTRIBUTION MAP (FR January 2012)



- Geomorphological survey**
- Cracks
 - - - Cracks (observed by GPS)
 - ▨ Landslides
 - ▨ Movements
 - ▨ Scarps
 - ▨ Rock fall scarp
 - ▨ High risk debris flow streams
 - ▨ High risk debris flow streams
 - Contour (25m)
 - Contour (5m)
 - ▲ Springs



LANDSLIDE, ROCK FALL AND DEBRIS FLOW DISTRIBUTION MAP (FR January 2012)



- Geomorphological survey**
- Cracks
 - - - Cracks (observed by GPS)
 - Landslides
 - Movements
 - Scarps
 - Rock fall scarp
 - ▨ Rock fall scarp
 - High risk debris flow streams
 - High risk debris flow streams
 - Contour (25m)
 - Contour (5m)
 - ▲ Springs

