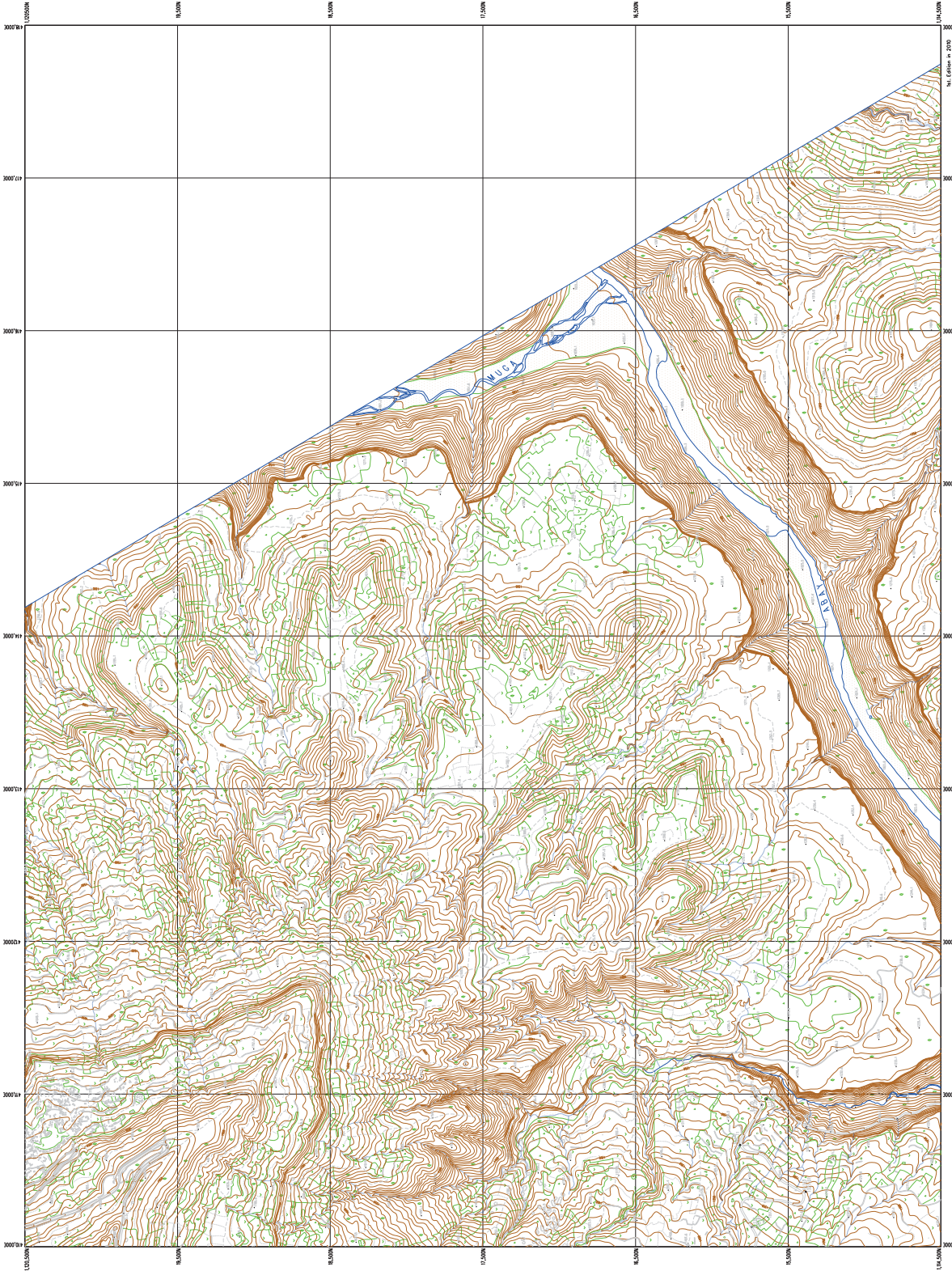


No.04



105,000' 104,000' 103,000' 102,000' 101,000' 100,000' 99,000' 98,000' 97,000' 96,000'

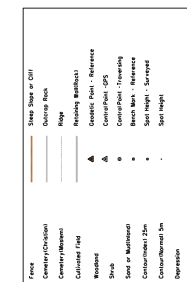
3000' 3000' 3000' 3000' 3000' 3000' 3000' 3000' 3000' 3000'

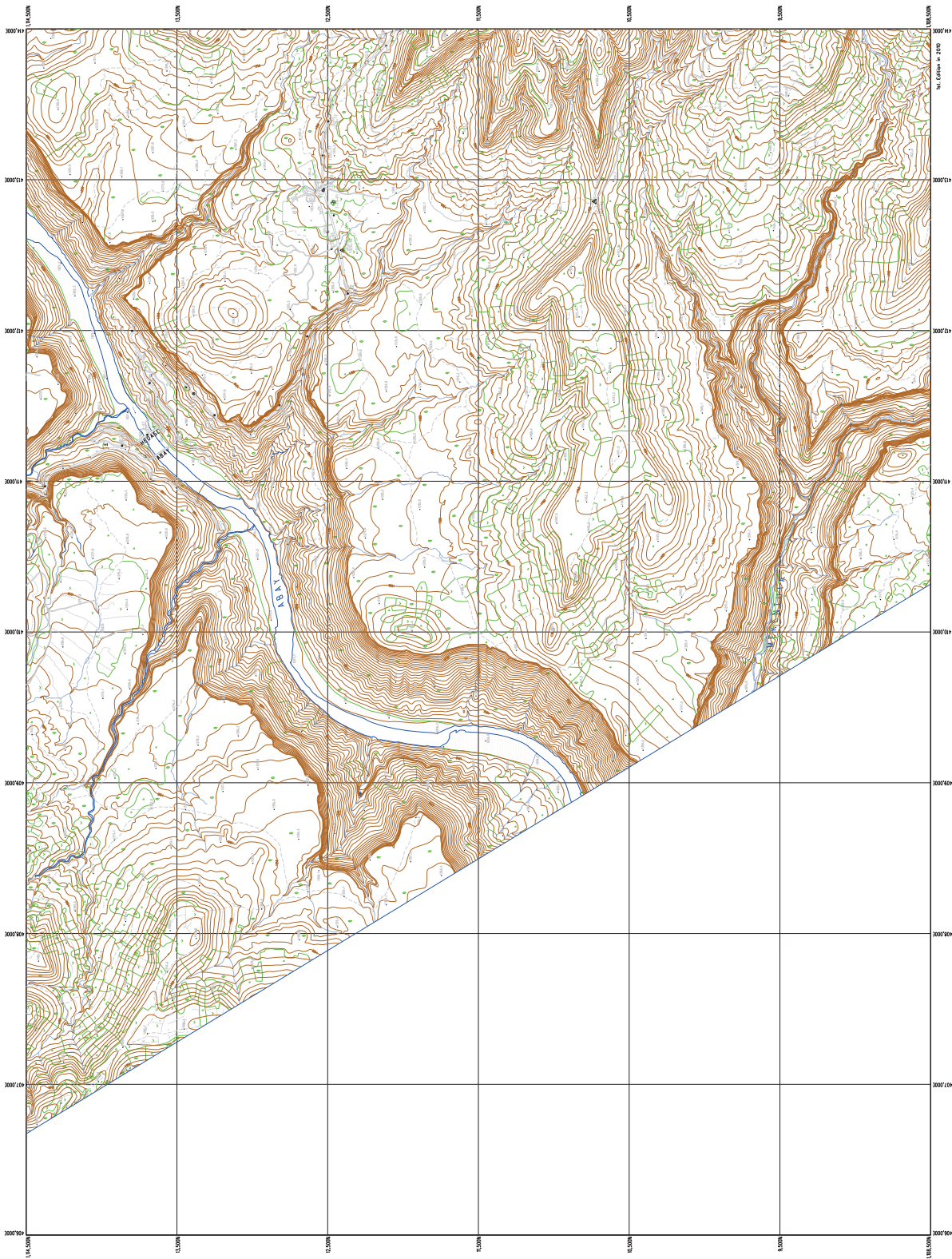
This diploma was prepared jointly by Japan International Cooperation Agency (JICA) and the Ministry of Land, Infrastructure, Transport and Tourism (MLIT) of the Government of the Federal Democratic Republic of Ethiopia, under the Japanese ODA Loan Grant Program and the Government of Ethiopia's Road Rehabilitation Program and the Government of Ethiopia's Rural Road Rehabilitation Program.

Schematic Map No.04 of 10  
Date of ground control survey: June 2010  
Date of field identification: June 2010  
Reference ellipsoid: Clarke 1880  
Datum: Indian  
Datum Height: 610.000m  
Coordinate System: UTM  
Meridian or origin: 39 degrees east of Greenwich  
Scale factor at origin: 0.9996  
False coordinate of origin: 500,000m in E  
False coordinate of origin: 500,000m in N  
Unit of measurement: meter  
Source: Topographic Map No. 101

**Legend**

Power Line	Tree	Fence	Shade Area or Cliff
Water (Canal)	Power Line	Concrete/Cyclops	Outcrop Area
Water (Stream)	Line	Concrete/Block	Ridge
Division of Safety Area	Point	Concrete/Block	Roading Bank/Barrier
	Line	Concrete/Block	Geometric Point - Reference
	Point	Concrete/Block	Control Point - GPS
	Point	Concrete/Block	Block Mark - Reference
	Point	Concrete/Block	Spot Height - Surveyed
	Point	Concrete/Block	Spot Height
	Point	Concrete/Block	Depression
	Point	Concrete/Block	



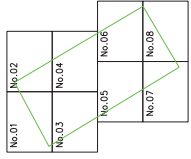


Scale 1:10,000

**Legend**

<ul style="list-style-type: none"> <li>Power Line</li> <li>High Voltage Line</li> <li>Medium Voltage Line</li> <li>Low Voltage Line</li> <li>Water Pipeline</li> <li>Drainage</li> <li>Division of Flood Plain</li> </ul>	<ul style="list-style-type: none"> <li>Water</li> <li>Stream</li> <li>Canal</li> <li>Drainage</li> <li>Water Pipeline</li> <li>Drainage</li> <li>Division of Flood Plain</li> </ul>	<ul style="list-style-type: none"> <li>Power Line</li> <li>High Voltage Line</li> <li>Medium Voltage Line</li> <li>Low Voltage Line</li> <li>Water Pipeline</li> <li>Drainage</li> <li>Division of Flood Plain</li> </ul>	<ul style="list-style-type: none"> <li>Water</li> <li>Stream</li> <li>Canal</li> <li>Drainage</li> <li>Water Pipeline</li> <li>Drainage</li> <li>Division of Flood Plain</li> </ul>	<ul style="list-style-type: none"> <li>Water</li> <li>Stream</li> <li>Canal</li> <li>Drainage</li> <li>Water Pipeline</li> <li>Drainage</li> <li>Division of Flood Plain</li> </ul>	<ul style="list-style-type: none"> <li>Water</li> <li>Stream</li> <li>Canal</li> <li>Drainage</li> <li>Water Pipeline</li> <li>Drainage</li> <li>Division of Flood Plain</li> </ul>
---	---	---	---	---	---

Index to adjoining sheets



The Project for Developing Countermeasures against Landslides in the Akyi River Catchment in the Federal Democratic Republic of Ethiopia

This diagram was prepared jointly by Japan International Cooperation Agency (JICA) under the Government of Ethiopia's Geomatics Program and the Government of the Federal Democratic Republic of Ethiopia.

Scale: 1:10,000  
 Date of field work: June 2010  
 Date of field verification: June 2010  
 Reference ellipsoid: Everest 1960  
 Datum: Everest  
 Coordinate system: UTM  
 - Meridian of origin is 39 degrees east of Greenwich  
 - Scale factor at origin is 0.9996  
 - False coordinate of origin is 500,000m in E  
 Unit of measurement: meter  
 Contour interval: 5m