

添付資料

添付資料 1
図 面 集

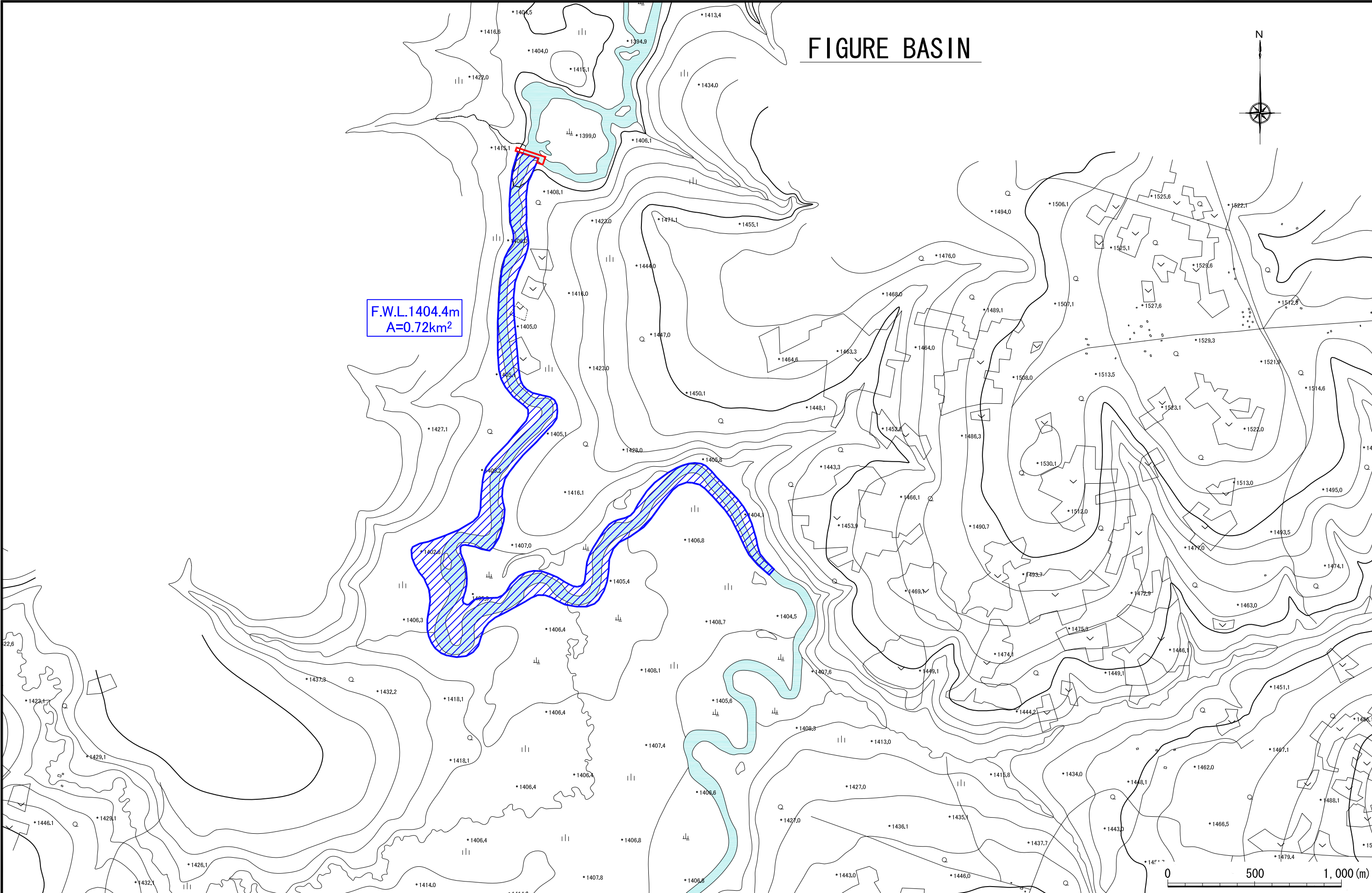
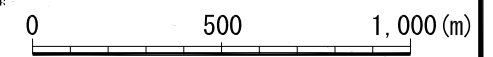
List of Drawings

Draw. No.	Title
C-001	Cutato Hydro Power Station Figure Basin
C-002	Cutato Hydro Power Station Overall Plan
C-003	Cutato Hydro Power Station Weir Plan
C-004	Cutato Hydro Power Station Figure Upstream Weir
C-005	Cutato Hydro Power Station Weir Standard Cross Section
C-006	Cutato Hydro Power Station Power House Plan
C-007	Cutato Hydro Power Station Vertical Section for Power House
C-008	Cutato Hydro Power Station Cross Section for Power House
C-009	Cutato Hydro Power Station Riverbed Excavation Plan
C-010	Cutato Hydro Power Station Access Road Plan
C-011	Cutato Hydro Power Station Temporary Facilities (1)
C-012	Cutato Hydro Power Station Temporary Facilities (2)
E-001	Cutato Hydro Power Station Single Line Diagram
E-002	Cutato Hydro Power Station Power House Layout
E-003	Cutato Hydro Power Station Vertical Section for Power House
E-004	Cutato Hydro Power Station Cross Section for Power House
E-005	Cutato Hydro Power Station Substation Layout
T-001	Distribution Line Route Cutato to Andulo
T-002	Single Line Diagram Distribution Line (30kV) from Cutato to Andulo
T-003	Single Line Diagram Distribution Line (400-230V) Low Voltage for Chicumbi
T-004	Sample Pole Drawing for Distribution Line Route Cutato to Andulo
T-005	Pole Drawing for Distribution Line Route Cutato to Andulo
T-006	Sample Pole Drawing for Distribution Line Route Cutato to Andulo
T-007	Pole Drawing for Distribution Line Route Cutato to Andulo

FIGURE BASIN



F.W.L. 1404.4m
A=0.72km²



REPUBLIC OF ANGOLA
MINISTRY OF ENERGY AND WATER



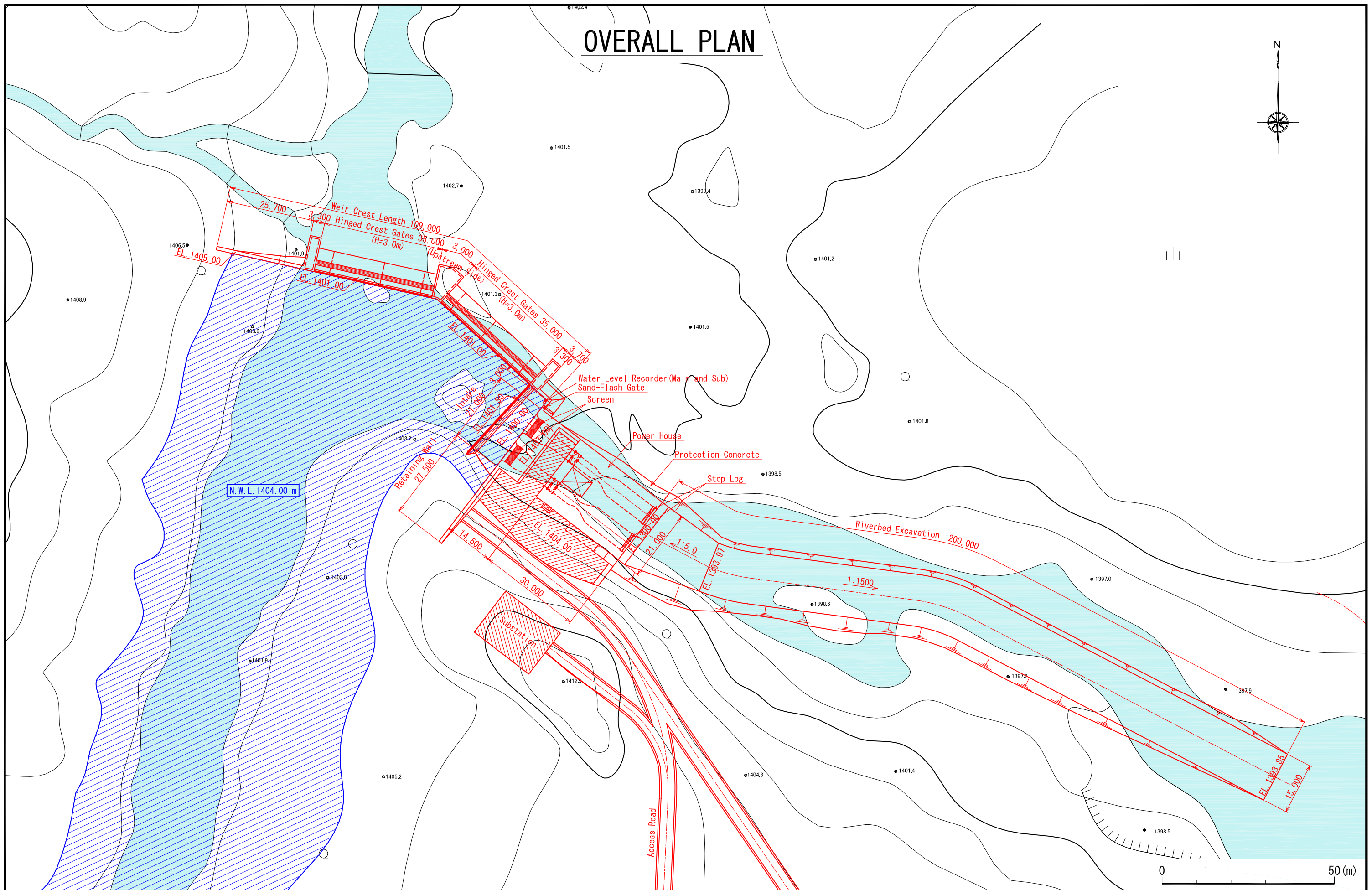
JAPAN INTERNATIONAL
COOPERATION AGENCY
NEWJEC Inc.

Project & Location
THE PREPARATORY SURVEY ON
RURAL ELECTRIFICATION DEVELOPMENT
IN THE REPUBLIC OF ANGLA

Drawing Title
CUTATO HYDRO POWER STATION
FIGURE BASIN
(S = 1/20,000)

DWG No.
C-001
7.Apr.2011

OVERALL PLAN



REPUBLIC OF ANGOLA
MINISTRY OF ENERGY AND WATER



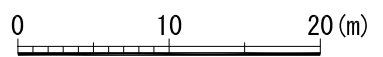
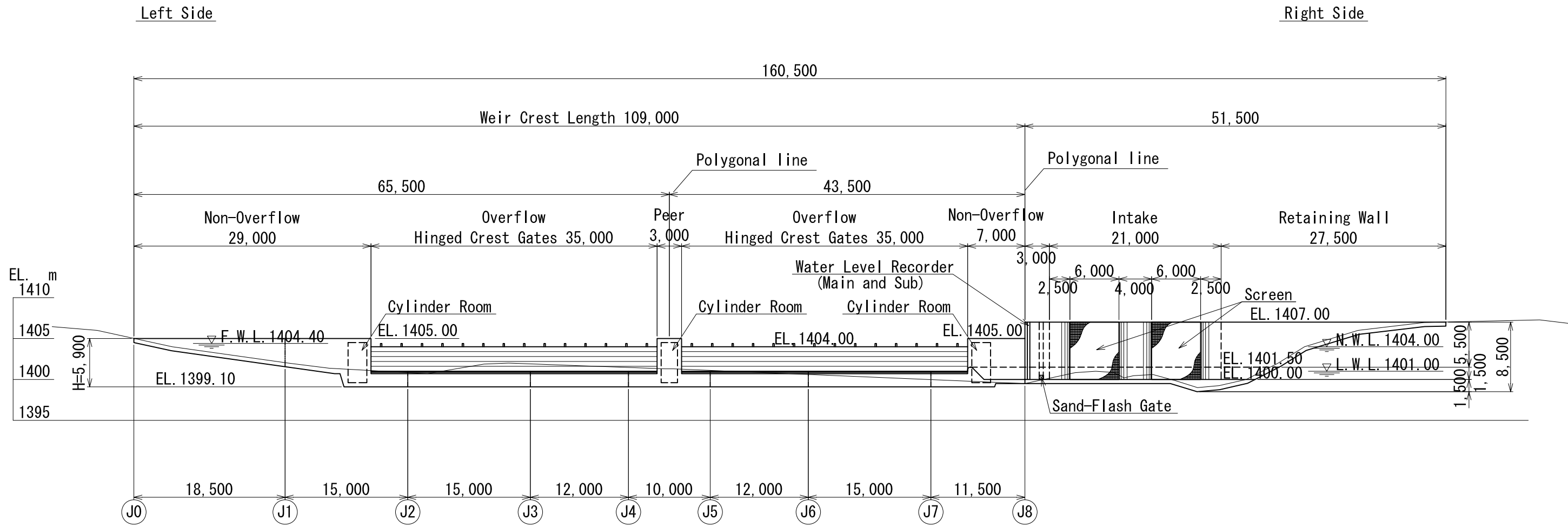
JAPAN INTERNATIONAL
COOPERATION AGENCY
NEWJEC Inc.

Project & Location
THE PREPARATORY SURVEY ON
RURAL ELECTRIFICATION DEVELOPMENT
IN THE REPUBLIC OF ANGOLA

Drawing Title
CUTATO HYDRO POWER STATION
OVERALL PLAN
(S = 1/1,000)

DWG No.
C-002
7.Apr.2011

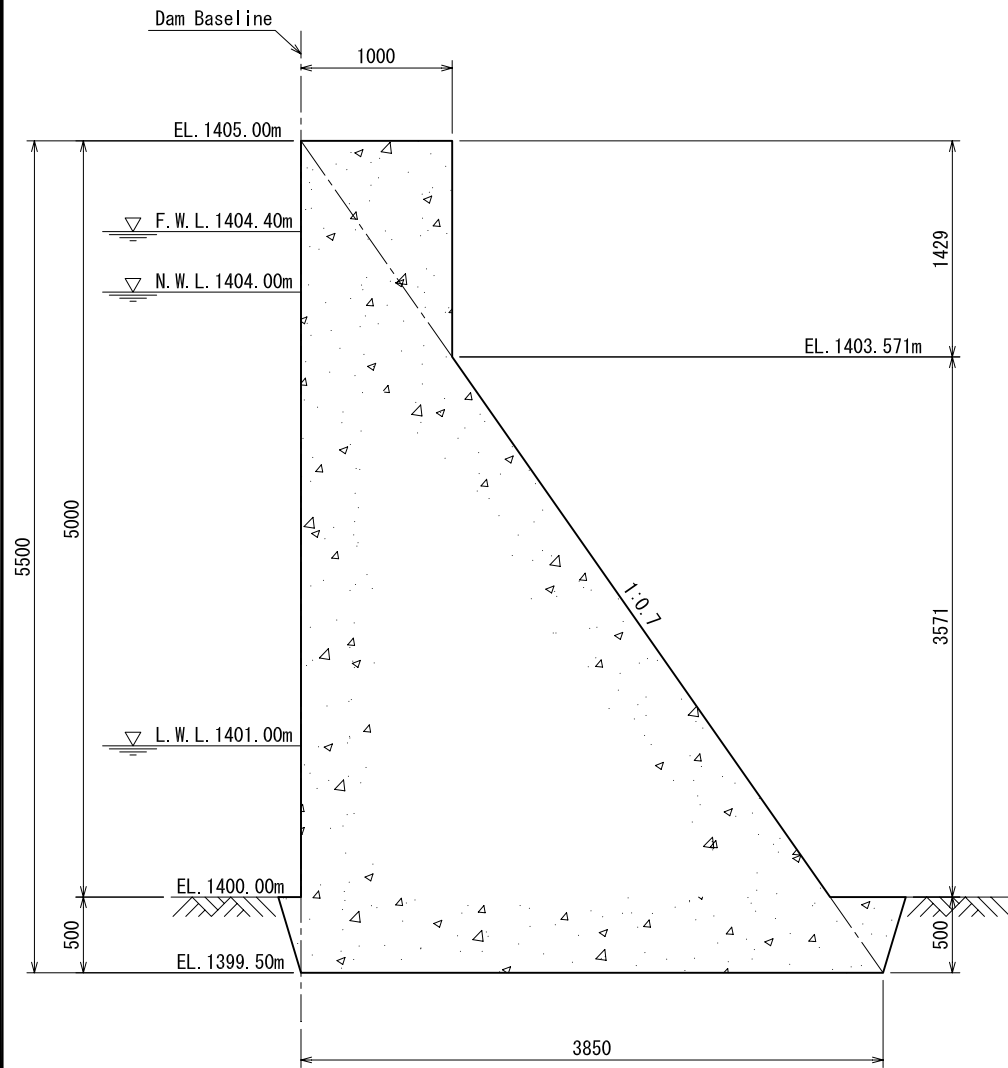
FIGURE UPSTREAM WEIR



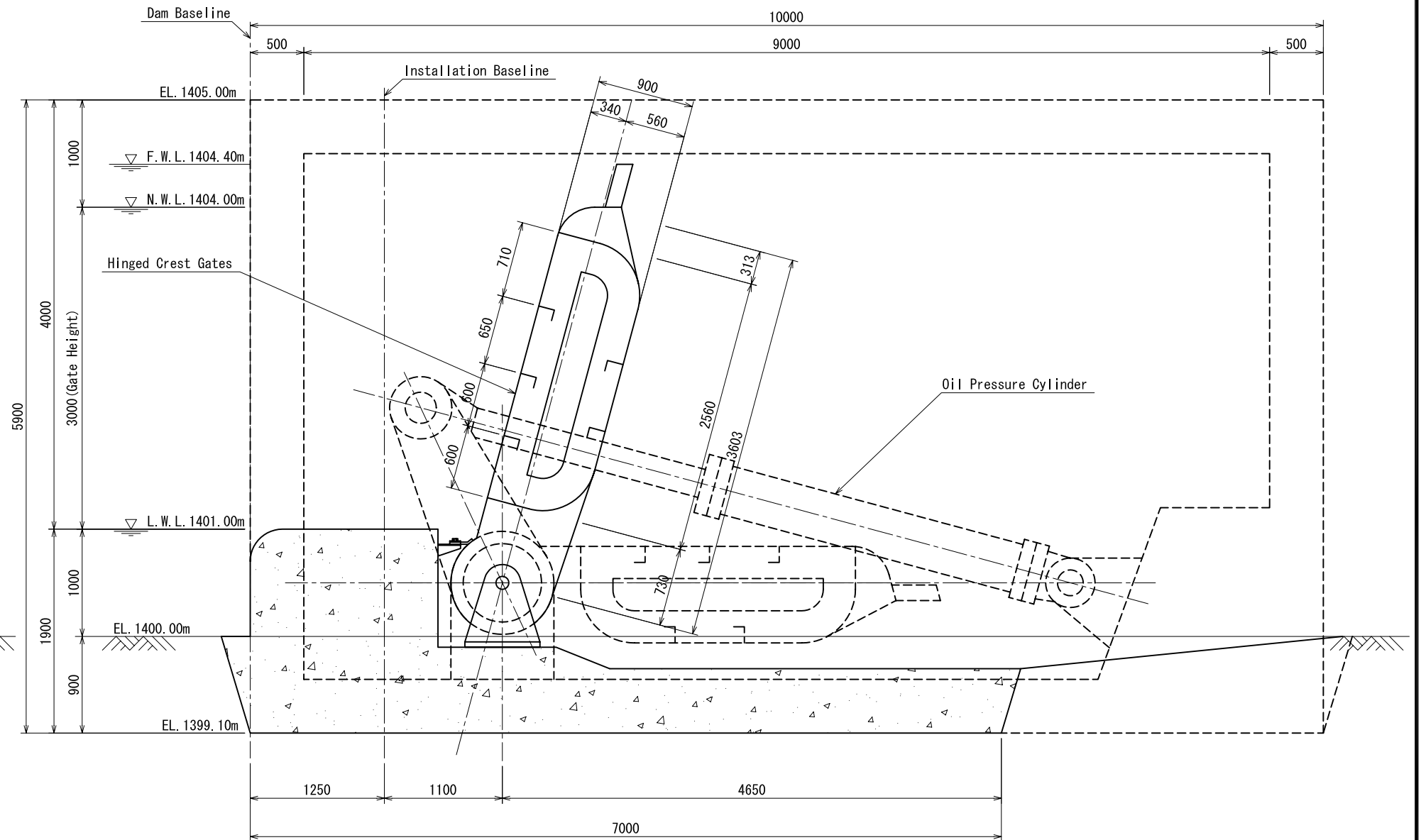
REPUBLIC OF ANGOLA MINISTRY OF ENERGY AND WATER	JICA NEWJEC	JAPAN INTERNATIONAL COOPERATION AGENCY NEWJEC Inc.	Project & Location	Drawing Title	DWG No.		
			THE PREPARATORY SURVEY ON RURAL ELECTRIFICATION DEVELOPMENT IN THE REPUBLIC OF ANGLA			CUTATO HYDRO POWER STATION FIGURE UPSTREAM WEIR (S = 1/500)	
						C-004 7.Apr.2011	

WEIR STANDARD CROSS SECTION

NON-OVERFLOW SECTION



OVERFLOW SECTION and CYLINDER ROOM



REPUBLIC OF ANGOLA
MINISTRY OF ENERGY AND WATER



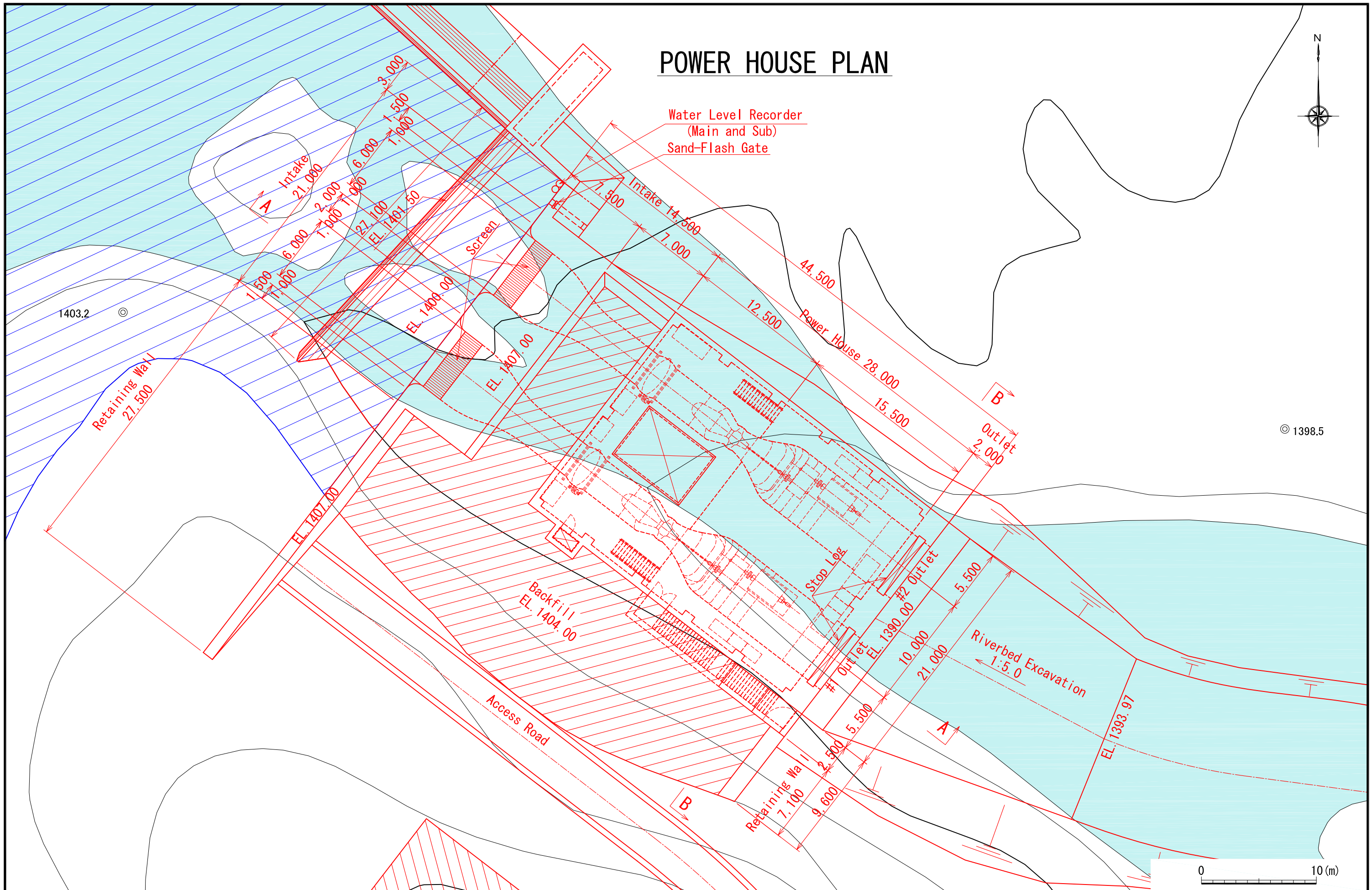
JAPAN INTERNATIONAL
COOPERATION AGENCY
NEWJEC Inc.

Project & Location
THE PREPARATORY SURVEY ON
RURAL ELECTRIFICATION DEVELOPMENT
IN THE REPUBLIC OF ANGLA

Drawing Title
CUTATO HYDRO POWER STATION
WEIR STANDARD CROSS SECTION
(S = 1/50)

DWG No.
C-005
7.Apr.2011

POWER HOUSE PLAN



REPUBLIC OF ANGOLA
MINISTRY OF ENERGY AND WATER



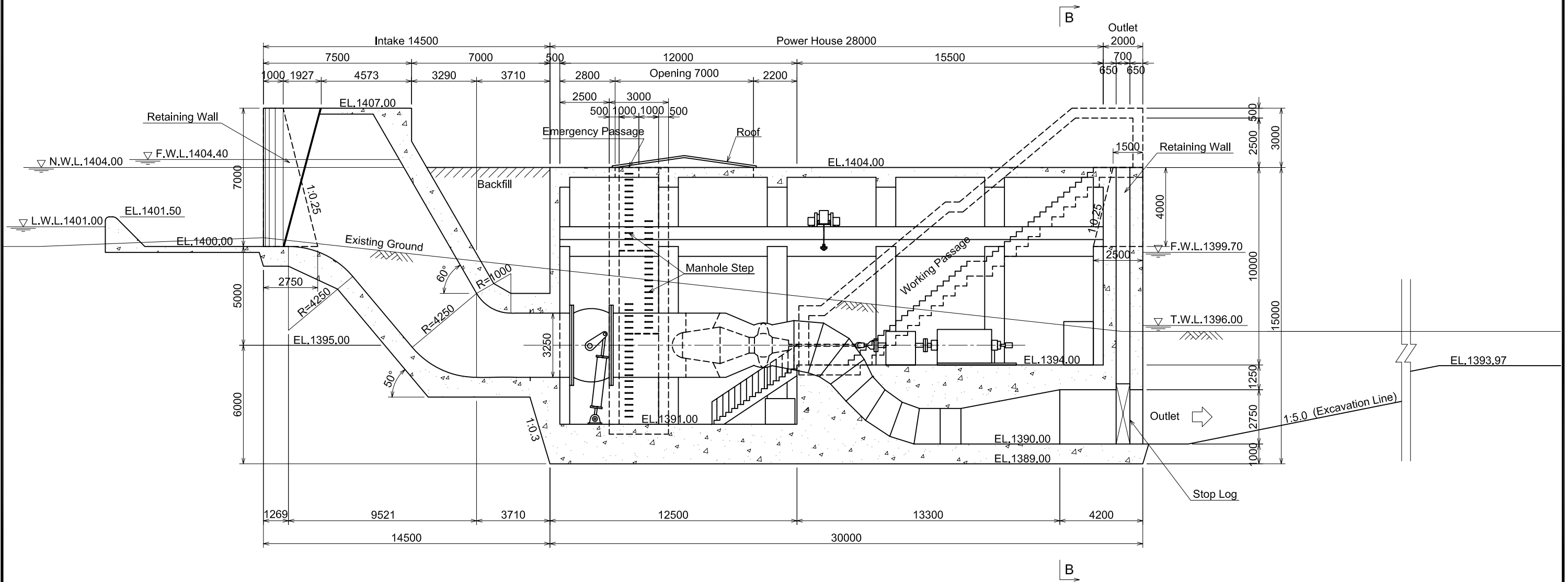
JAPAN INTERNATIONAL
COOPERATION AGENCY
NEWJEC Inc.

Project & Location
THE PREPARATORY SURVEY ON
RURAL ELECTRIFICATION DEVELOPMENT
IN THE REPUBLIC OF ANGOLA

Drawing Title
CUTATO HYDRO POWER STATION
POWER HOUSE PLAN
(S = 1/300)

DWG No.
C-006
7.Apr.2011

VERTICAL SECTION FOR POWER HOUSE (A - A)



REPUBLIC OF ANGOLA
MINISTRY OF ENERGY AND WATER



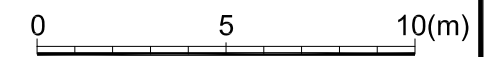
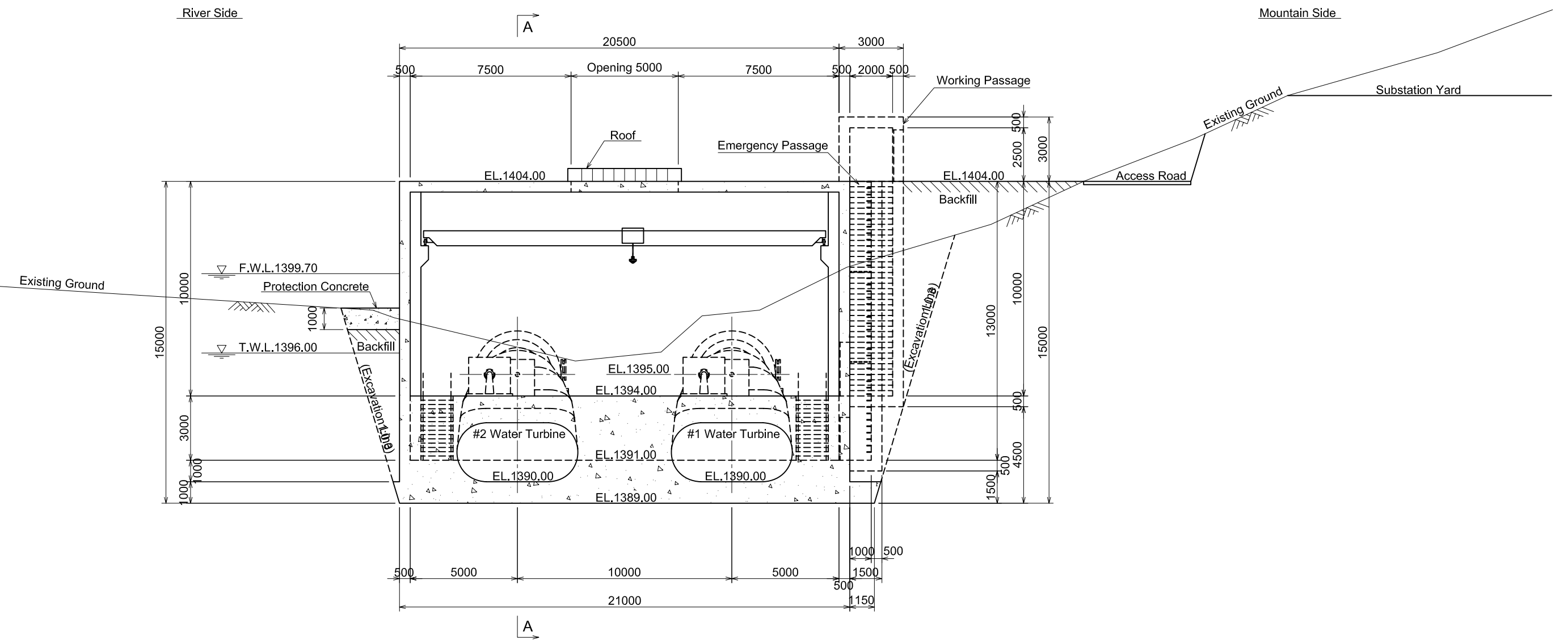
JAPAN INTERNATIONAL
COOPERATION AGENCY
NEWJEC Inc.


Project & Location
THE PREPARATORY SURVEY ON
RURAL ELECTRIFICATION DEVELOPMENT
IN THE REPUBLIC OF ANGOLA

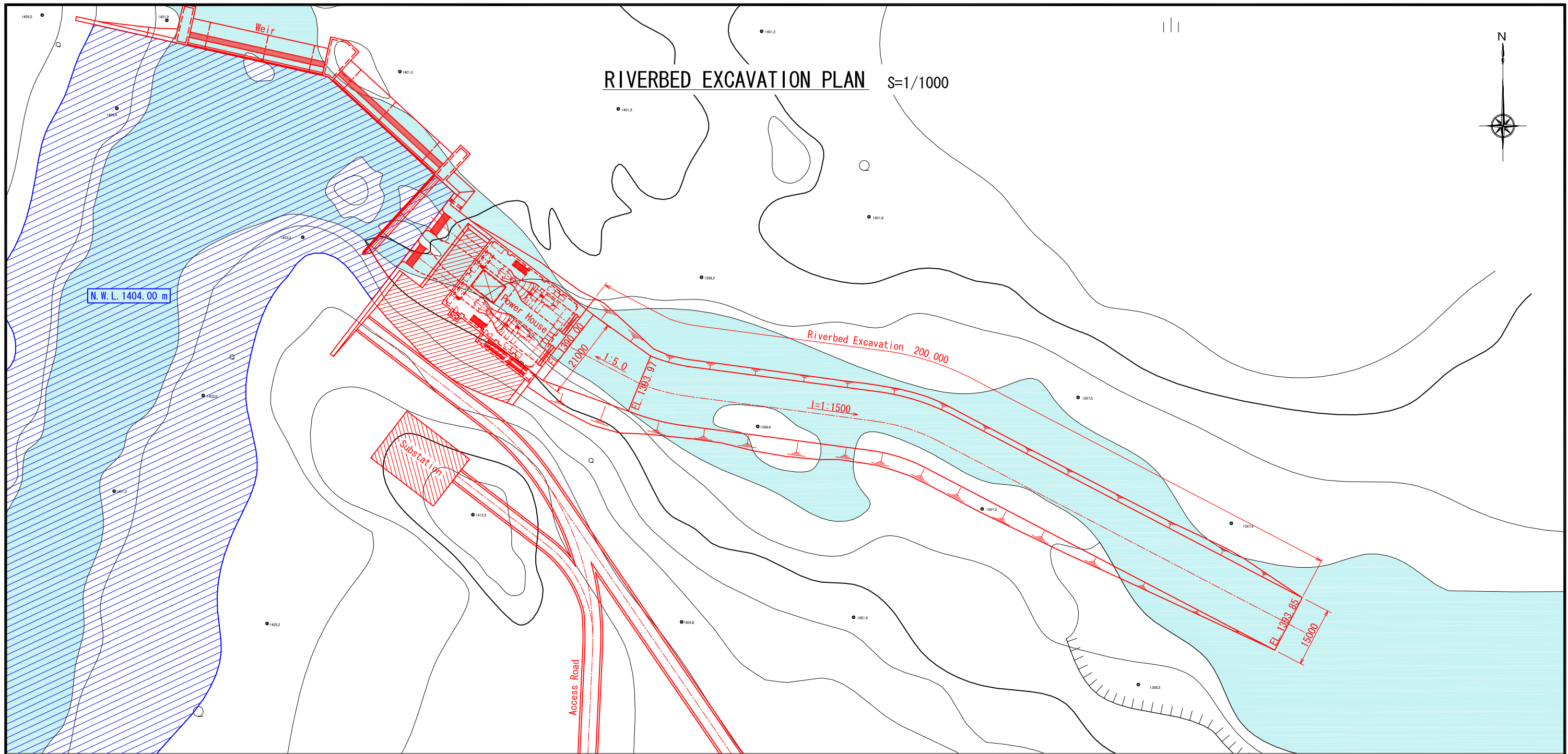
Drawing Title
CUTATO HYDRO POWER STATION
VERTICAL SECTION FOR POWER HOUSE
(S = 1/200)

DWG No.
C-007
7.Apr.2011

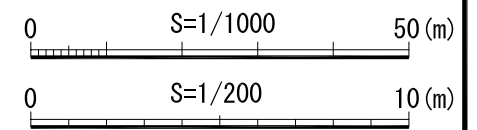
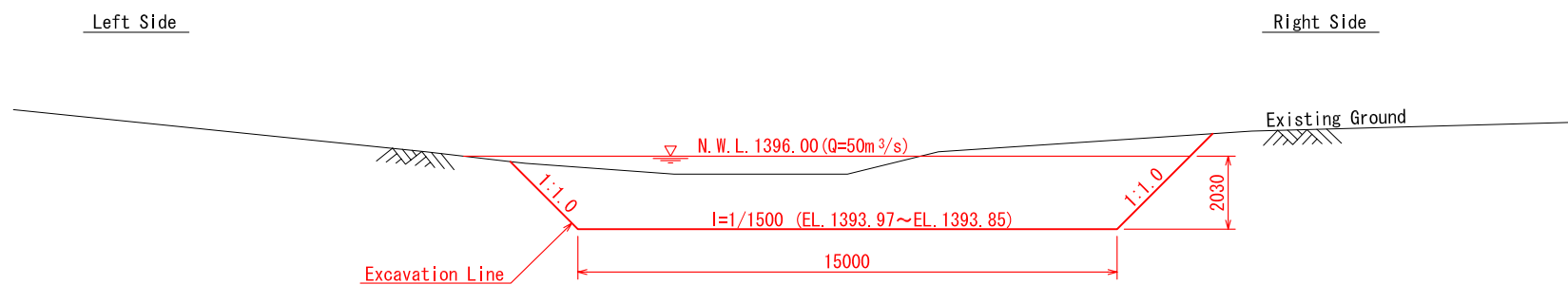
CROSS SECTION FOR POWER HOUSE (B - B)





REPUBLIC OF ANGOLA MINISTRY OF ENERGY AND WATER	 JAPAN INTERNATIONAL COOPERATION AGENCY NEWJEC Inc.	Project & Location	Drawing Title	DWG No.
		THE PREPARATORY SURVEY ON RURAL ELECTRIFICATION DEVELOPMENT IN THE REPUBLIC OF ANGLA	CUTATO HYDRO POWER STATION CROSS SECTION FOR POWER HOUSE (S = 1/200)	C-008
				7.Apr.2011



CROSS SECTION FOR RIVERBED EXCAVATION S=1/200

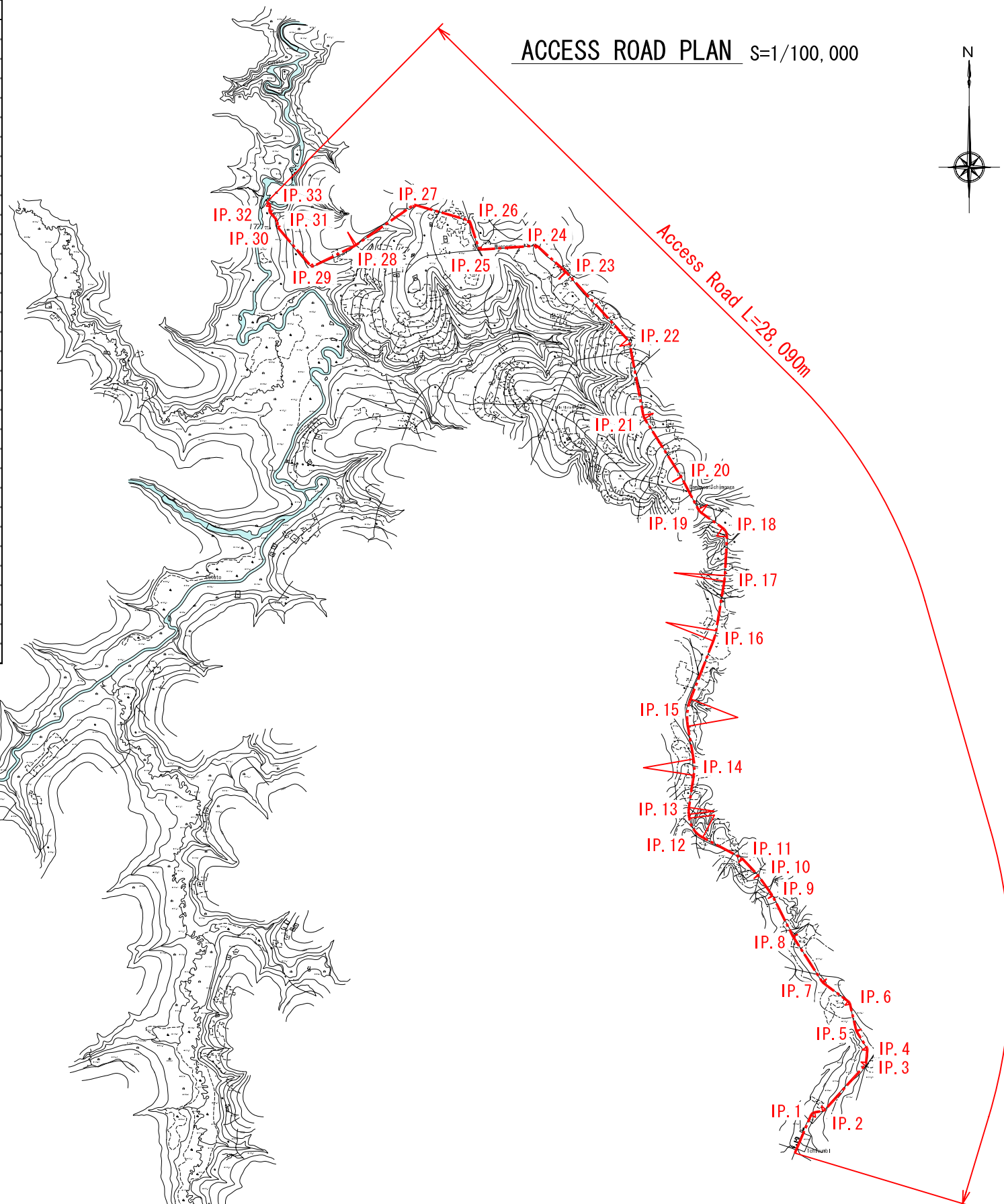
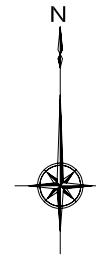


REPUBLIC OF ANGOLA MINISTRY OF ENERGY AND WATER	 JAPAN INTERNATIONAL COOPERATION AGENCY  NEWJEC Inc.	Project & Location THE PREPARATORY SURVEY ON RURAL ELECTRIFICATION DEVELOPMENT IN THE REPUBLIC OF ANGOLA	Drawing Title CUTATO HYDRO POWER STATION RIVERBED EXCAVATION PLAN (S = 1/1000 , 1/200)	DWG No. C-009 7.Apr.2011
--	--	--	--	--

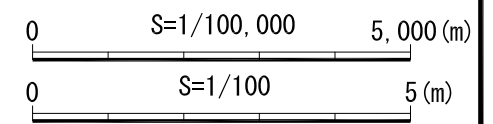
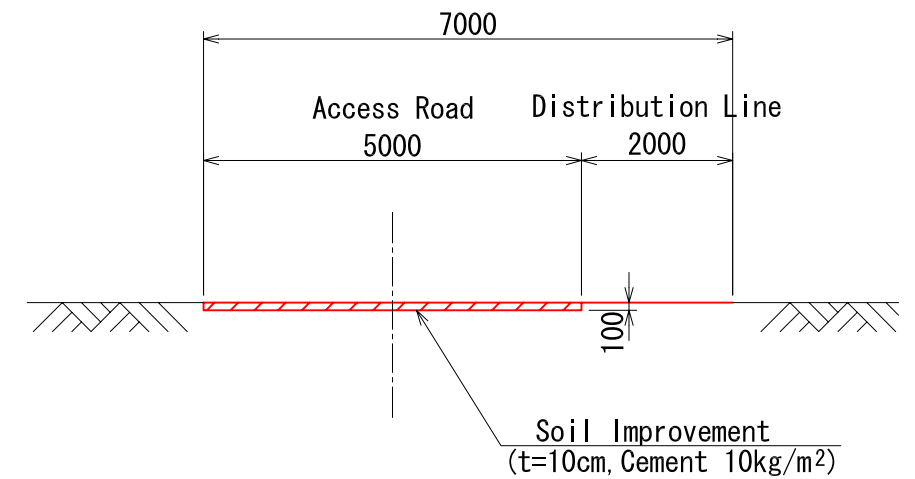
Specifications of IP

No.	IA	R(m)	TL(m)	CL(m)
IP. 1	57' 10' 1"	100.000	54.487	99.780
IP. 2	38' 10' 14"	100.000	34.634	66.681
IP. 3	36' 24' 4"	100.000	32.889	63.549
IP. 4	37' 59' 14"	100.000	34.454	66.361
IP. 5	19' 8' 52"	100.000	16.984	33.646
IP. 6	40' 24' 47"	100.000	36.922	70.739
IP. 7	20' 52' 4"	100.000	18.424	36.439
IP. 8	6' 18' 55"	100.000	5.637	11.262
IP. 9	12' 39' 6"	100.000	11.099	22.108
IP. 10	8' 1' 46"	100.000	7.119	14.215
IP. 11	22' 57' 16"	100.000	20.340	40.133
IP. 12	55' 2' 57"	500.000	261.347	481.638
IP. 13	15' 47' 57"	500.000	70.011	139.117
IP. 14	18' 26' 32"	1000.000	163.059	323.274
IP. 15	31' 19' 9"	1000.000	280.538	547.015
IP. 16	11' 59' 27"	1000.000	105.619	210.458
IP. 17	6' 32' 11"	1000.000	57.343	114.561
IP. 18	57' 38' 20"	200.000	110.153	201.372
IP. 19	26' 59' 34"	200.000	48.159	94.519
IP. 20	4' 27' 27"	200.000	7.902	15.795
IP. 21	21' 27' 6"	200.000	37.911	74.933
IP. 22	31' 31' 54"	200.000	56.720	110.538
IP. 23	5' 47' 15"	200.000	10.175	20.333
IP. 24	46' 2' 48"	50.000	21.310	40.288
IP. 25	75' 31' 7"	50.000	38.739	65.918
IP. 26	55' 29' 8"	50.000	26.309	48.438
IP. 27	50' 45' 17"	50.000	23.740	44.329
IP. 28	8' 33' 16"	300.000	22.542	45.000
IP. 29	75' 42' 23"	50.000	38.899	66.116
IP. 30	38' 12' 26"	50.000	17.349	33.399
IP. 31	40' 0' 0"	30.000	10.919	20.944
IP. 32	45' 7' 2"	50.000	20.773	39.377
IP. 33	55' 0' 0"	70.000	36.440	67.195

ACCESS ROAD PLAN S=1/100,000



CROSS SECTION FOR ACCESS ROAD S=1/100



REPUBLIC OF ANGOLA
MINISTRY OF ENERGY AND WATER



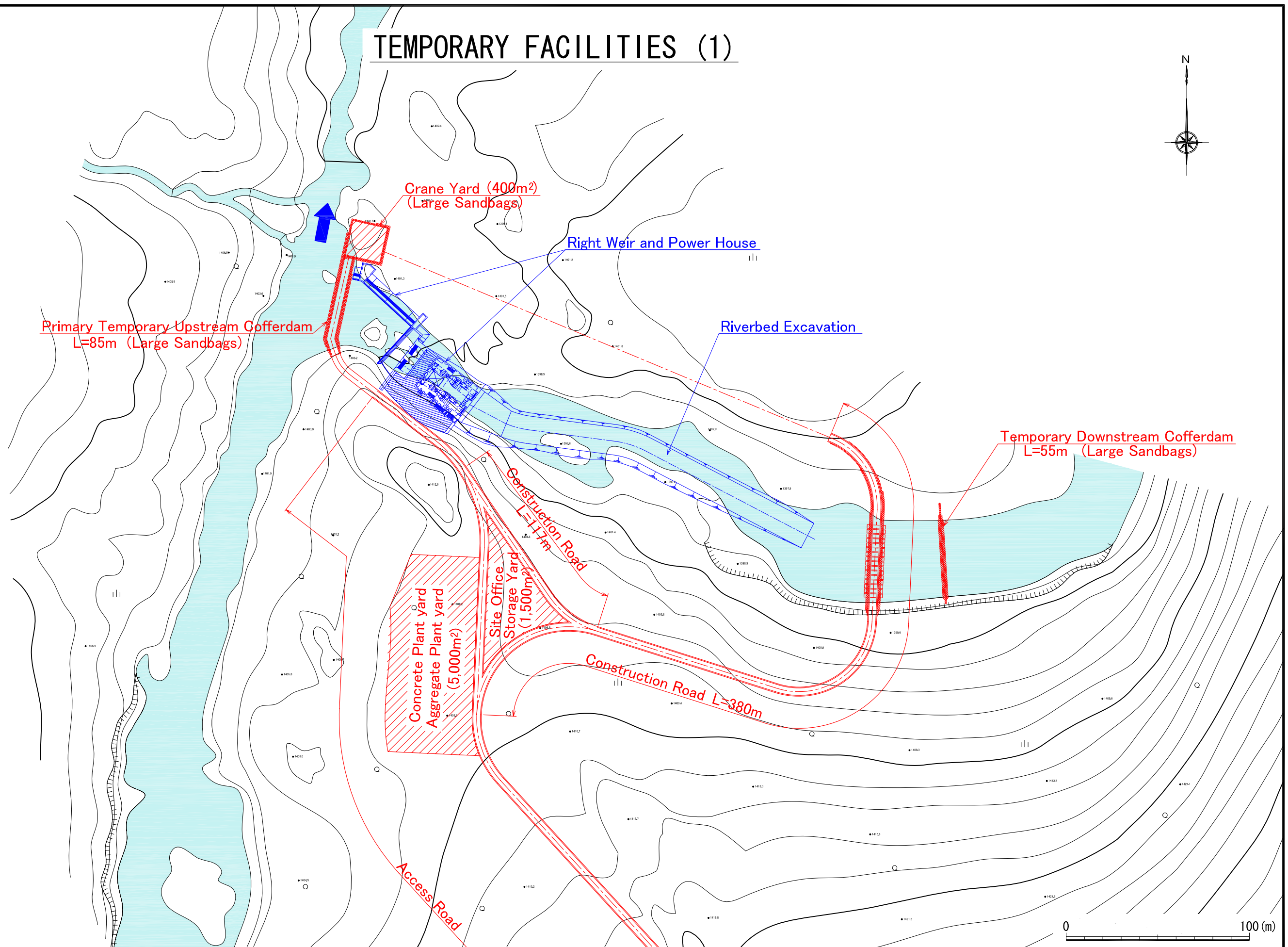
JAPAN INTERNATIONAL
COOPERATION AGENCY
NEWJEC Inc.

Project & Location
THE PREPARATORY SURVEY ON
RURAL ELECTRIFICATION DEVELOPMENT
IN THE REPUBLIC OF ANGLA

Drawing Title
CUTATO HYDRO POWER STATION
ACCESS ROAD PLAN
(S = 1/100,000 ,1/100)

DWG No.
C-010
7.Apr.2011

TEMPORARY FACILITIES (1)



REPUBLIC OF ANGOLA
MINISTRY OF ENERGY AND WATER



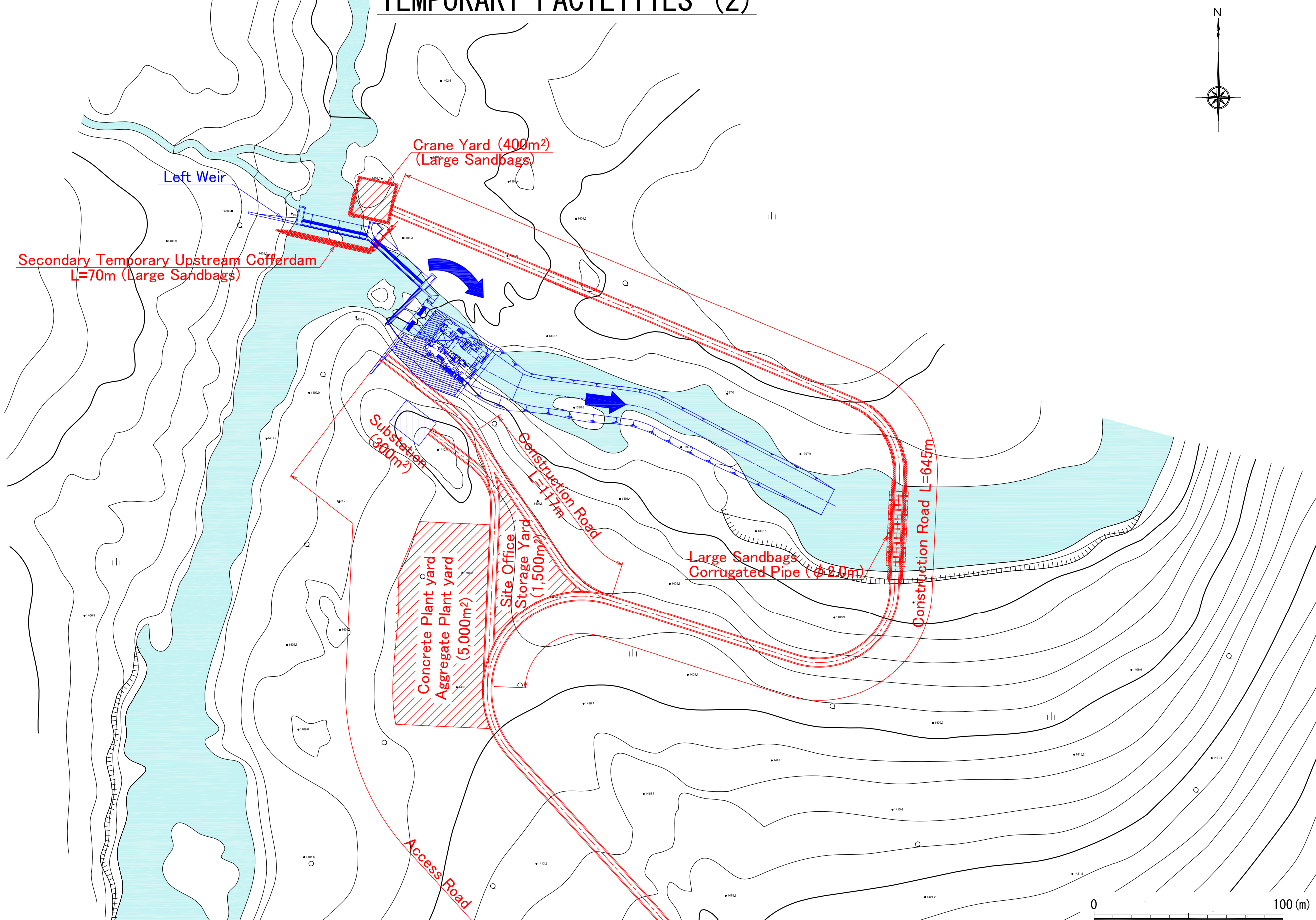
JAPAN INTERNATIONAL
COOPERATION AGENCY
NEWJEC Inc.

Project & Location
THE PREPARATORY SURVEY ON
RURAL ELECTRIFICATION DEVELOPMENT
IN THE REPUBLIC OF ANGLA

Drawing Title
CUTATO HYDRO POWER STATION
TEMPORARY FACILITIES (1)
(S = 1/2,000)

DWG No.
C-011
7.Apr.2011

TEMPORARY FACILITIES (2)



REPUBLIC OF ANGOLA
MINISTRY OF ENERGY AND WATER



JAPAN INTERNATIONAL
COOPERATION AGENCY
NEWJEC Inc.

Project & Location
THE PREPARATORY SURVEY ON
RURAL ELECTRIFICATION DEVELOPMENT
IN THE REPUBLIC OF ANGOLA

Drawing Title
CUTATO HYDRO POWER STATION
TEMPORARY FACILITIES (2)
(S = 1/2,000)

DWG No.
C-012
7.Apr.2011