

PLAN & PROFILE
SECTION 1: STA 66+800 - 67+500

MINISTRY OF PUBLIC WORKS AND TRANSPORT
LAO PEOPLE'S DEMOCRATIC REPUBLIC

JAPAN INTERNATIONAL COOPERATION AGENCY
THE CONSORTIUM OF
ORIENTAL CONSULTANTS CO., LTD.
INTERNATIONAL DEVELOPMENT CENTER OF JAPAN

JICA **ORIENTAL CONSULTANTS**

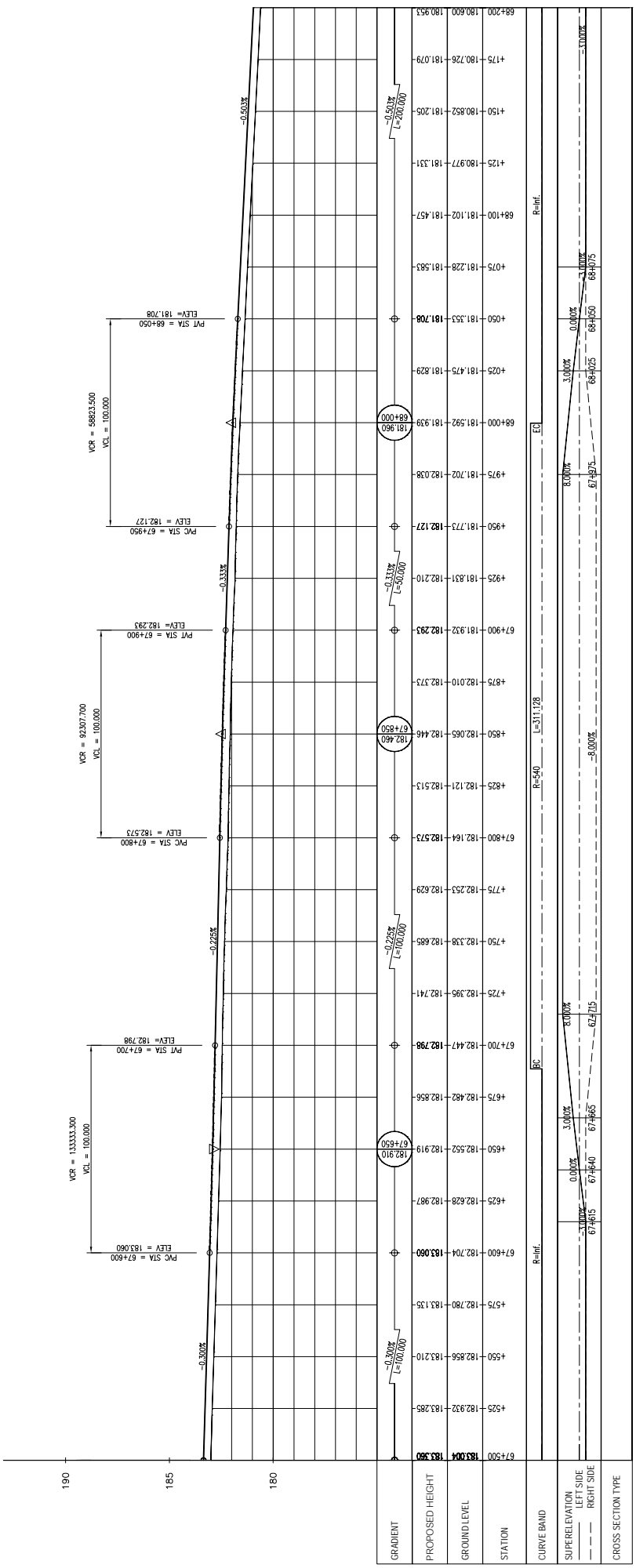
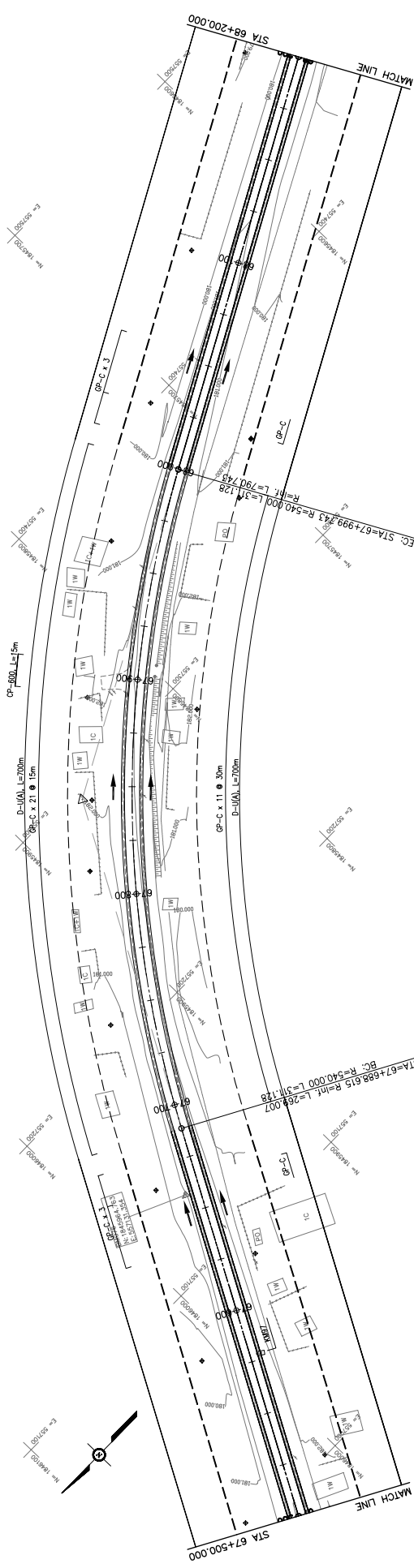
REV. No.	DATE	DESCRIPTION

SCALE: H=1:2,000
V=1:200

DRAWING No. **C-156**

THE PROJECT FOR IMPROVEMENT OF NATIONAL ROAD No.9
AS EAST-WEST ECONOMIC CORRIDOR IN LAO PDR

SIGNATURE: _____
NAME: _____
TITLE: _____
PREPARED BY: _____
CHECKED BY: _____
APPROVED BY: _____



GRADIENT	PROPOSED HEIGHT	GROUND LEVEL	STATION	CURVE BAND	SUPERELEVATION LEFT SIDE	SUPERELEVATION RIGHT SIDE	CROSS SECTION TYPE
	183.500	183.000	67+500	R=inf.	0.000%	0.000%	
	183.004	182.987	67+500	R=inf.	0.000%	0.000%	
	182.856	182.919	67+500	R=inf.	0.000%	0.000%	
	182.932	182.987	67+500	R=inf.	0.000%	0.000%	
	182.780	182.919	67+500	R=inf.	0.000%	0.000%	
	182.704	182.919	67+500	R=inf.	0.000%	0.000%	
	182.828	182.919	67+500	R=inf.	0.000%	0.000%	
	182.628	182.919	67+500	R=inf.	0.000%	0.000%	
	182.552	182.919	67+500	R=inf.	0.000%	0.000%	
	182.482	182.919	67+500	R=inf.	0.000%	0.000%	
	182.447	182.919	67+500	R=inf.	0.000%	0.000%	
	182.398	182.919	67+500	R=inf.	0.000%	0.000%	
	182.253	182.919	67+500	R=inf.	0.000%	0.000%	
	182.164	182.919	67+500	R=inf.	0.000%	0.000%	
	182.121	182.919	67+500	R=inf.	0.000%	0.000%	
	182.068	182.919	67+500	R=inf.	0.000%	0.000%	
	182.010	182.919	67+500	R=inf.	0.000%	0.000%	
	181.932	182.919	67+500	R=inf.	0.000%	0.000%	
	181.773	182.919	67+500	R=inf.	0.000%	0.000%	
	181.702	182.919	67+500	R=inf.	0.000%	0.000%	
	181.592	182.919	67+500	R=inf.	0.000%	0.000%	
	181.475	182.919	67+500	R=inf.	0.000%	0.000%	
	181.353	182.919	67+500	R=inf.	0.000%	0.000%	
	181.228	182.919	67+500	R=inf.	0.000%	0.000%	
	181.102	182.919	67+500	R=inf.	0.000%	0.000%	
	180.977	182.919	67+500	R=inf.	0.000%	0.000%	
	180.852	182.919	67+500	R=inf.	0.000%	0.000%	
	180.726	182.919	67+500	R=inf.	0.000%	0.000%	
	180.600	182.919	67+500	R=inf.	0.000%	0.000%	

MINISTRY OF PUBLIC WORKS AND TRANSPORT
LAO PEOPLE'S DEMOCRATIC REPUBLIC

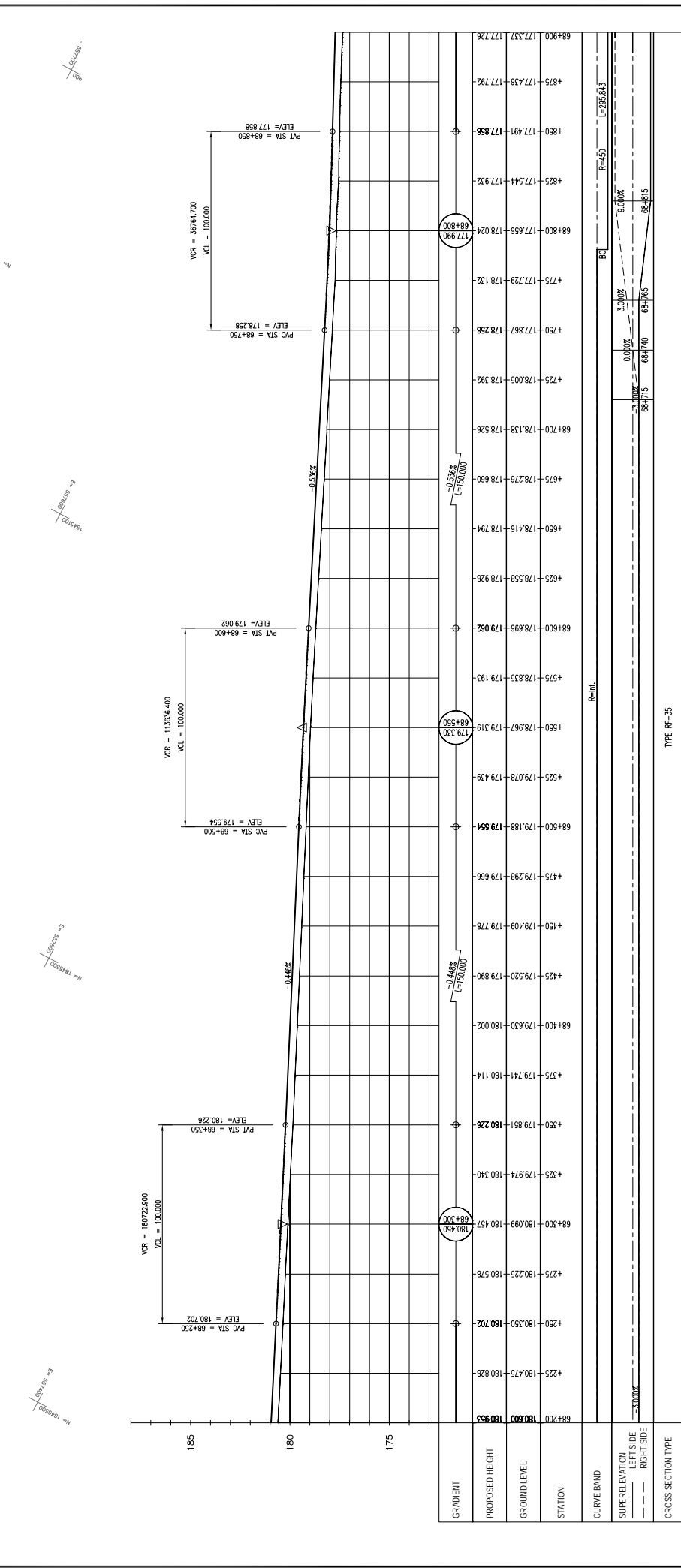
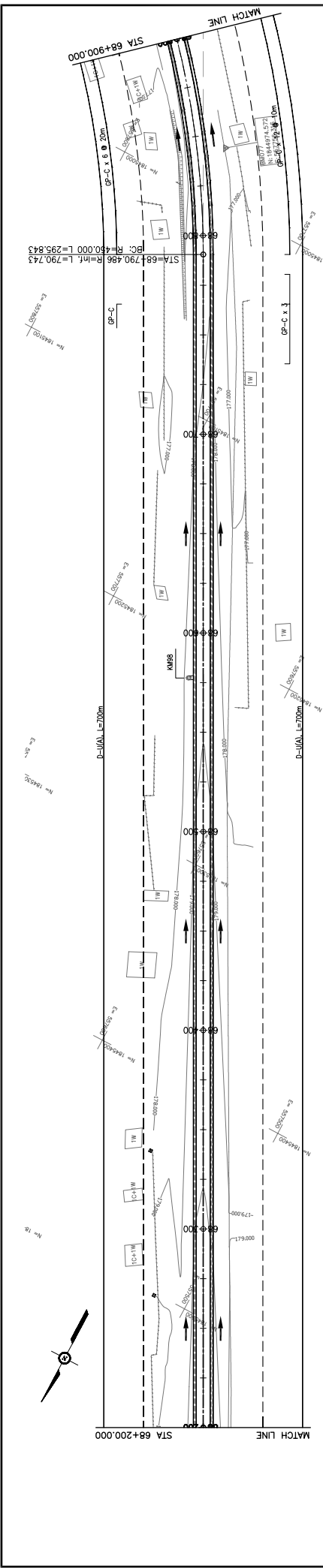
JAPAN INTERNATIONAL COOPERATION AGENCY
THE CONSORTIUM OF
ORIENTAL CONSULTANTS CO., LTD.
INTERNATIONAL DEVELOPMENT CENTER OF JAPAN

PLAN & PROFILE
SECTION 1: STA 67+500 - 68+200

THE PROJECT FOR IMPROVEMENT OF NATIONAL ROAD No.9
AS EAST-WEST ECONOMIC CORRIDOR IN LAO PDR

DRAWING TITLE: PLAN & PROFILE
DRAWING NO.: C-157

REV. No.	DATE	DESCRIPTION	SCALE
1			H=1:2,000 V=1:200
2			
3			



TYPE RF-35

TITLE	NAME	SIGNATURE	DATE	DESCRIPTION	REV. No.
PREPARED BY					
CHECKED BY					
APPROVED BY					

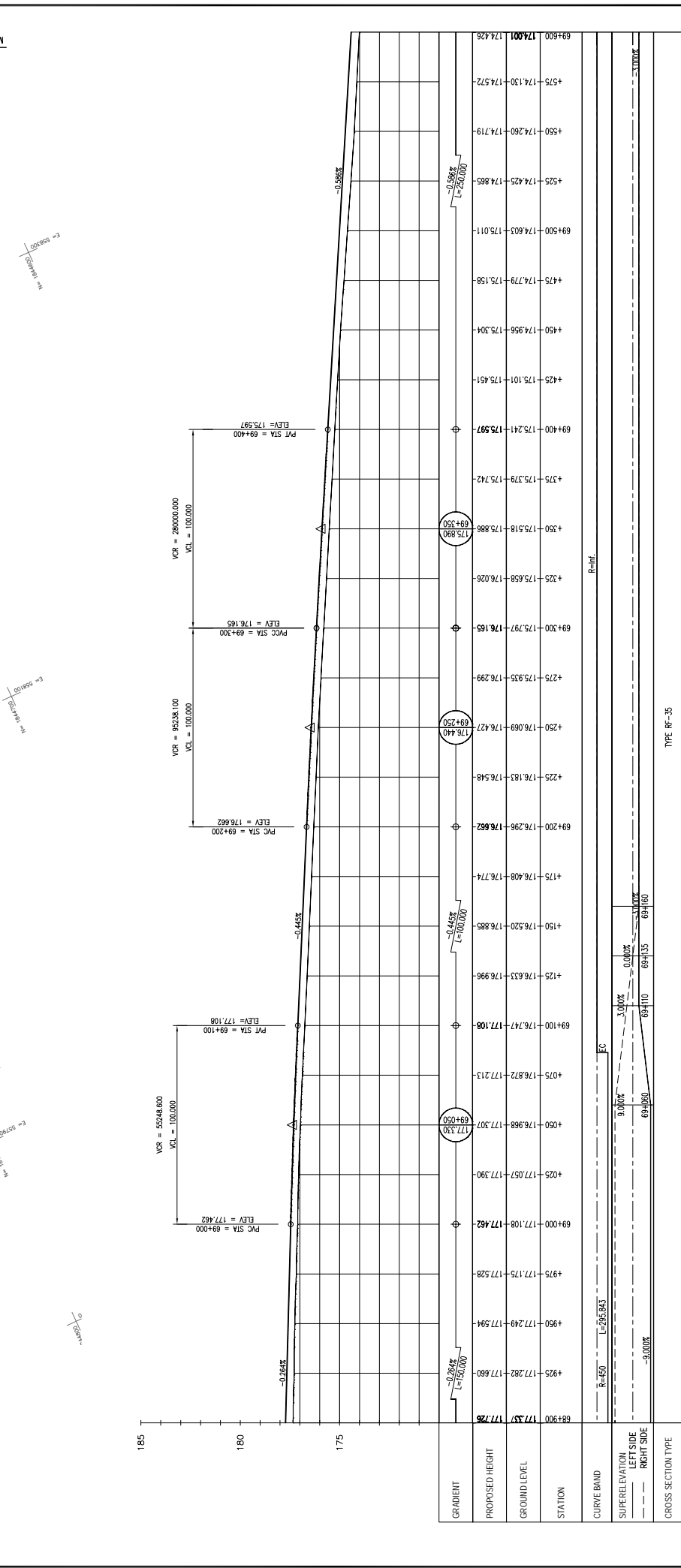
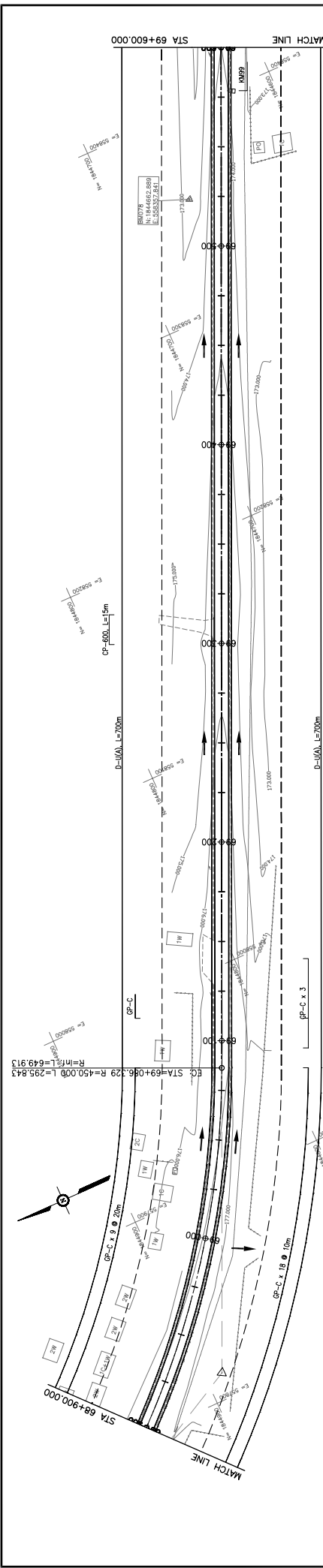
JAPAN INTERNATIONAL COOPERATION AGENCY
 THE CONSORTIUM OF
ORIENTAL CONSULTANTS CO., LTD.
 INTERNATIONAL DEVELOPMENT CENTER OF JAPAN

MINISTRY OF PUBLIC WORKS AND TRANSPORT
LAO PEOPLE'S DEMOCRATIC REPUBLIC

THE PROJECT FOR IMPROVEMENT OF NATIONAL ROAD No.9
AS EAST-WEST ECONOMIC CORRIDOR IN LAO PDR

PLAN & PROFILE
SECTION 1: STA 68+200 - 68+900


SCALE: H=1:2,000
 V=1:200
 DRAWING No. **C-158**



REV. No.	DATE	DESCRIPTION


SCALE:	H=1:2,000
	V=1:200
DRAWING No.	C-159

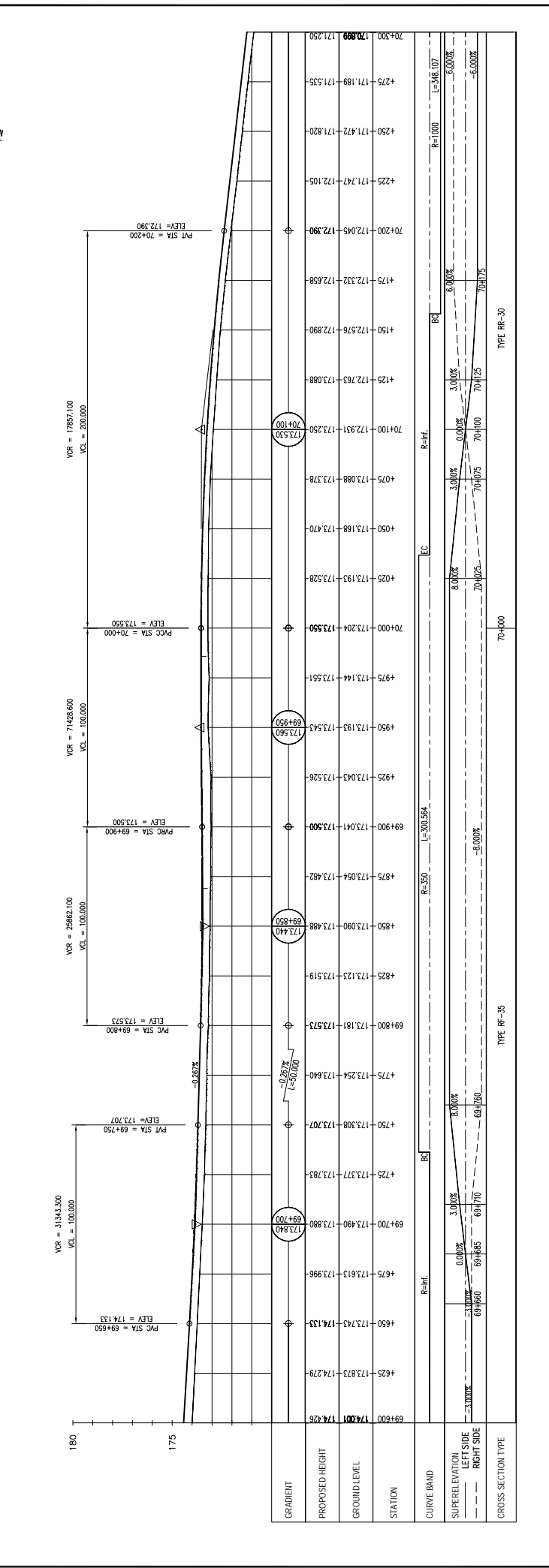
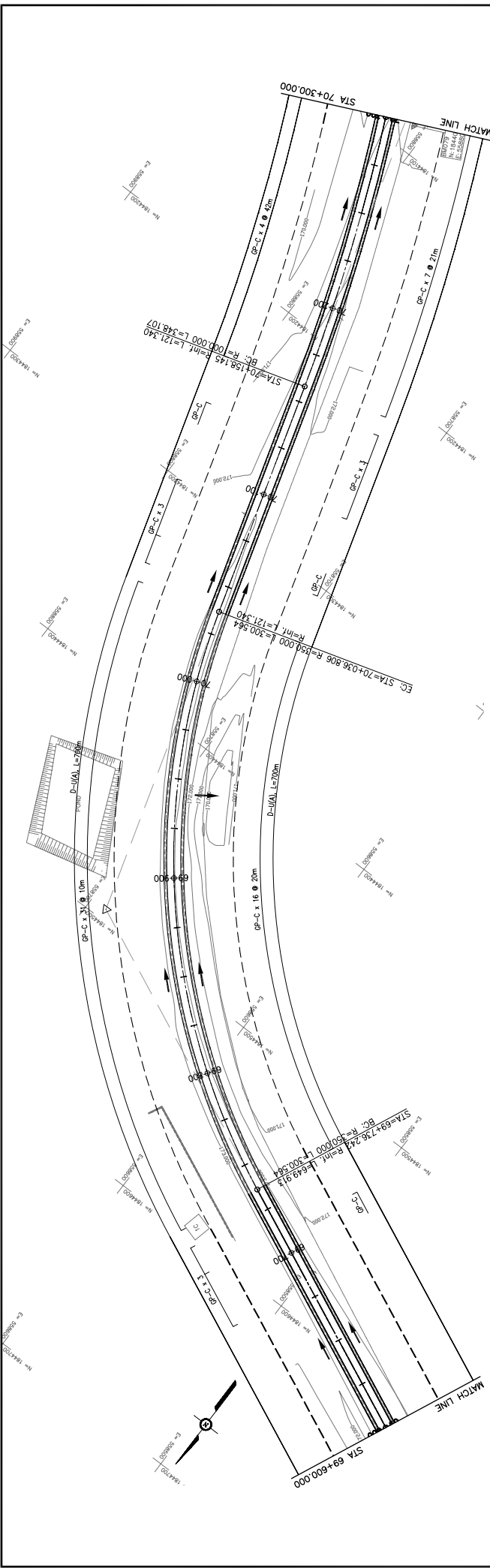
THE PROJECT FOR IMPROVEMENT OF NATIONAL ROAD No.9 AS EAST-WEST ECONOMIC CORRIDOR IN LAO PDR	
DRAWING TITLE: PLAN & PROFILE	
SECTION 1: STA 68+900 - 69+600	

MINISTRY OF PUBLIC WORKS AND TRANSPORT LAO PEOPLE'S DEMOCRATIC REPUBLIC	
	

TITLE	NAME	SIGNATURE
PREPARED BY		
CHECKED BY		
APPROVED BY		

JAPAN INTERNATIONAL COOPERATION AGENCY	THE CONSORTIUM OF
ORIENTAL CONSULTANTS CO., LTD.	INTERNATIONAL DEVELOPMENT CENTER OF JAPAN





REV. No.	DATE	DESCRIPTION

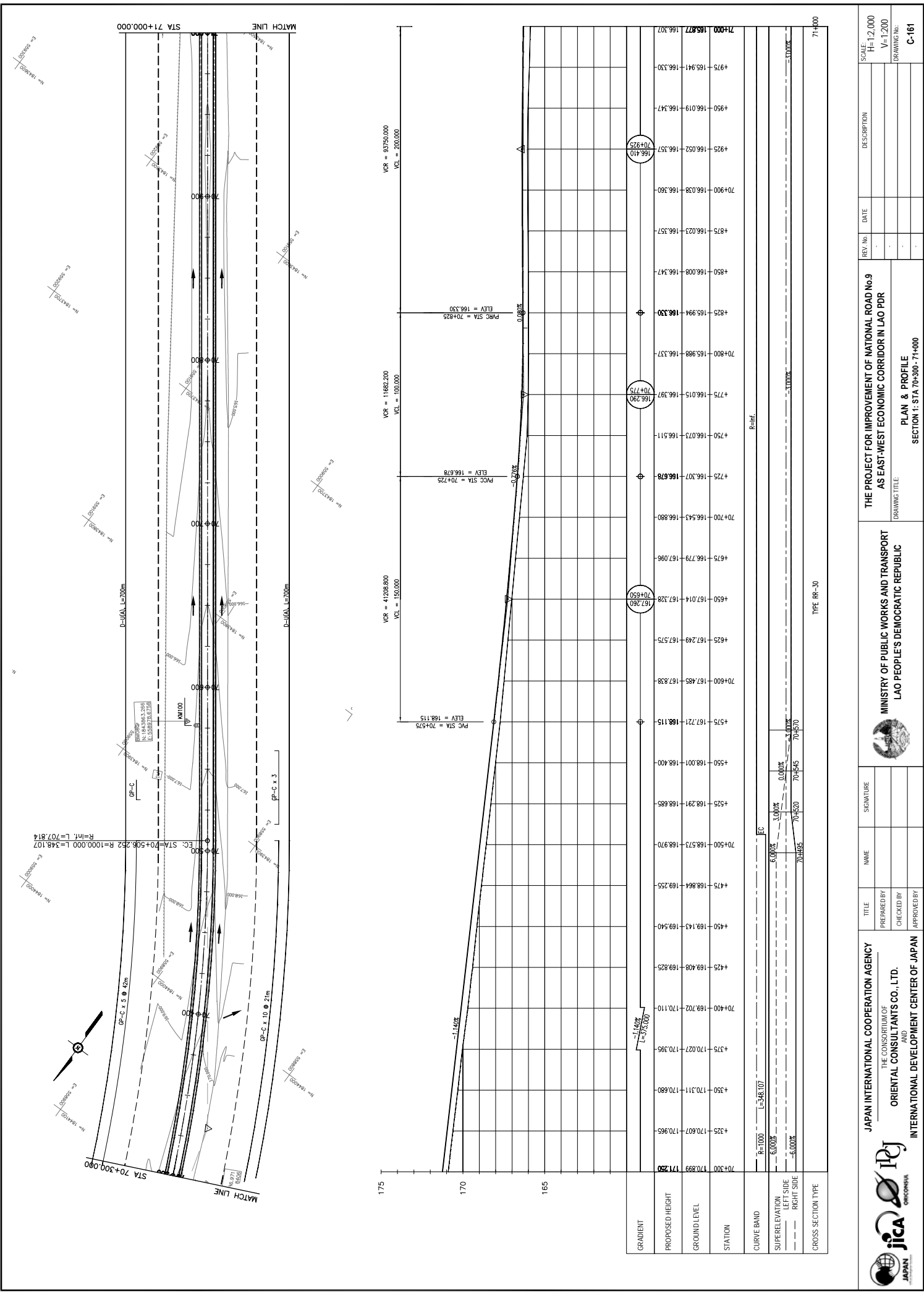
SCALE:	H=1:2,000
	V=1:200

PROJECT TITLE:	THE PROJECT FOR IMPROVEMENT OF NATIONAL ROAD No.9 AS EAST-WEST ECONOMIC CORRIDOR IN LAO PDR
DRAWING TITLE:	PLAN & PROFILE SECTION 1: STA 69+600 - 70+300

AGENCY:	JAPAN INTERNATIONAL COOPERATION AGENCY
CLIENT:	THE CONSORTIUM OF ORIENTAL CONSULTANTS CO., LTD.
CLIENT:	INTERNATIONAL DEVELOPMENT CENTER OF JAPAN

TITLE:	NAME:	SIGNATURE:
PREPARED BY:		
CHECKED BY:		
APPROVED BY:		

DRAWING No.:	C-160
--------------	-------



STATION	PROPOSED HEIGHT	GROUND LEVEL	GRADIENT
70+300	170.889	171.250	
4325	170.607	170.965	
4350	170.311	170.680	
4375	170.027	170.395	-1.40%
70+400	169.702	170.110	-1.40%
4425	169.408	169.825	
4450	169.143	169.540	
4475	168.864	169.255	
70+500	168.573	168.970	
4525	168.291	168.685	
4550	168.001	168.400	
4575	167.721	168.115	
70+600	167.485	167.838	
4625	167.249	167.575	
4650	167.014	167.328	6.738%
70+700	166.543	166.880	
4725	166.307	166.678	
4750	166.073	166.511	
4775	166.015	166.397	70+775
70+800	165.988	166.337	
4825	165.994	166.330	
4850	166.008	166.347	
4875	166.023	166.357	
70+900	166.038	166.360	
4925	166.052	166.357	70+925
4950	166.019	166.347	
4975	165.941	166.330	
71+000	165.877	166.307	

JICA JAPAN INTERNATIONAL COOPERATION AGENCY

ORIENTAL CONSULTANTS CO., LTD.

INTERNATIONAL DEVELOPMENT CENTER OF JAPAN

MINISTRY OF PUBLIC WORKS AND TRANSPORT

LAO PEOPLE'S DEMOCRATIC REPUBLIC

SCALE: H=1:2,000
V=1:200

DRAWING NO. C-161

THE PROJECT FOR IMPROVEMENT OF NATIONAL ROAD No.9

AS EAST-WEST ECONOMIC CORRIDOR IN LAO PDR

PLAN & PROFILE

SECTION 1: STA 70+300 - 71+000

REV. No.	DATE	DESCRIPTION

TITLE

PREPARED BY

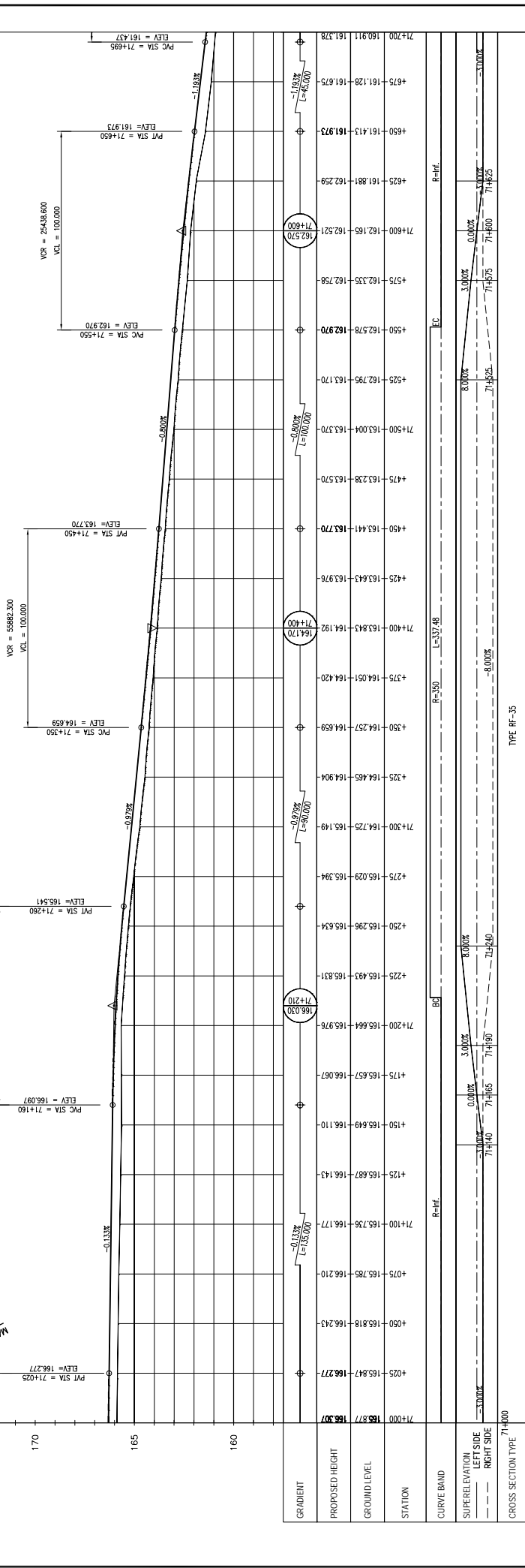
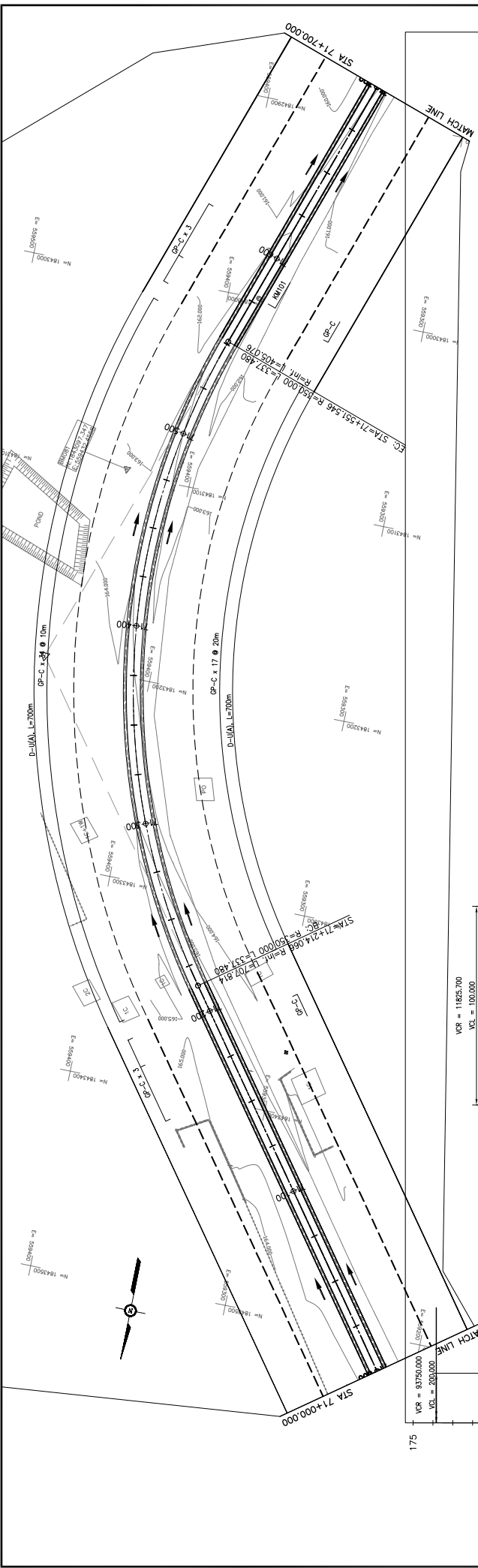
CHECKED BY

APPROVED BY

SIGNATURE

NAME

TYPE: RR-30



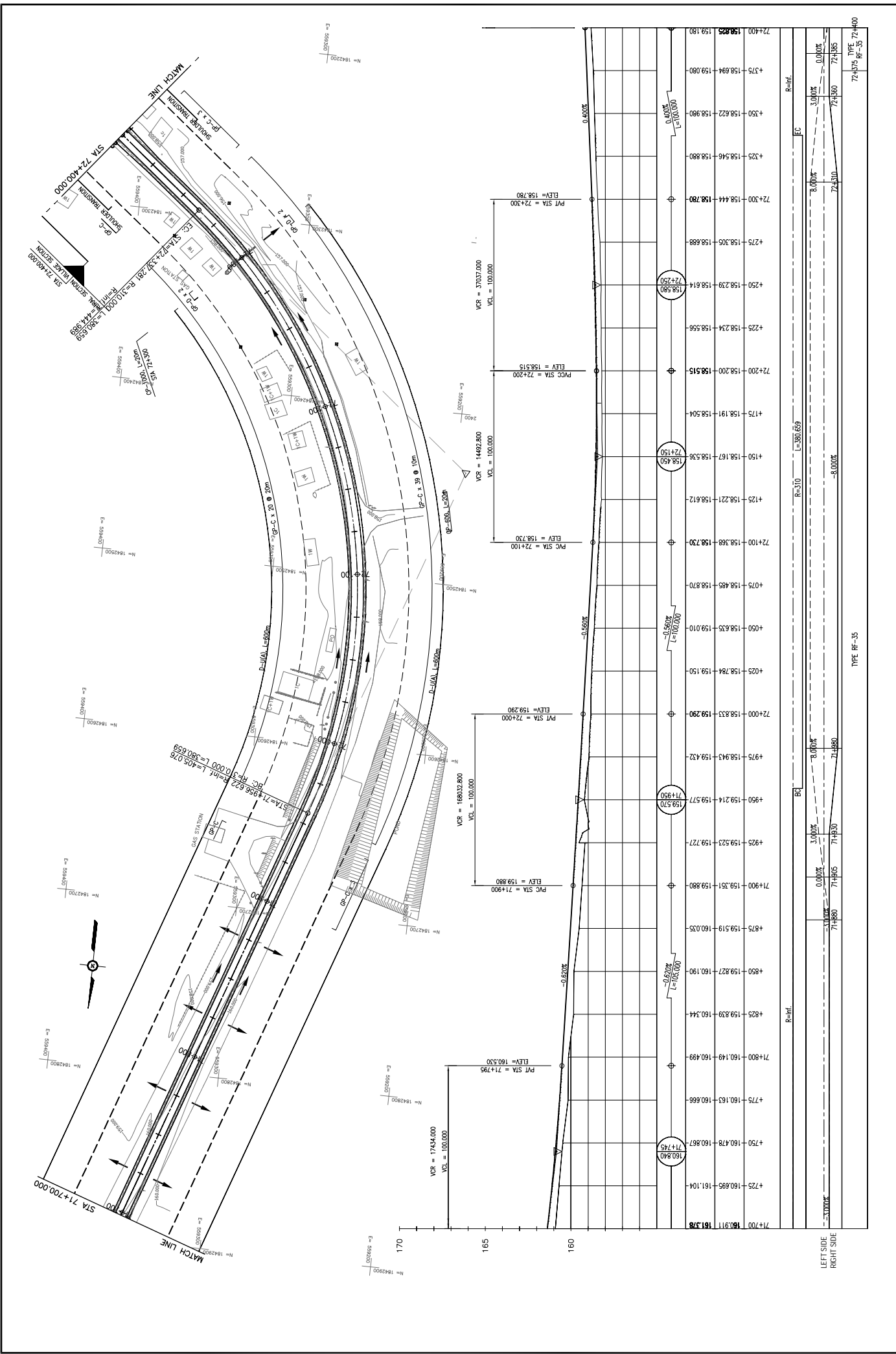
REV. No.	DATE	DESCRIPTION

SCALE:	H=1:2,000
	V=1:200
DRAWING No.	C-162

THE PROJECT FOR IMPROVEMENT OF NATIONAL ROAD No.9 AS EAST-WEST ECONOMIC CORRIDOR IN LAO PDR	
DRAWING TITLE	
MINISTRY OF PUBLIC WORKS AND TRANSPORT LAO PEOPLE'S DEMOCRATIC REPUBLIC	
PLAN & PROFILE SECTION 1: STA 71+000 - 71+700	

TITLE	SIGNATURE
PREPARED BY	
CHECKED BY	
APPROVED BY	

JAPAN INTERNATIONAL COOPERATION AGENCY	
THE CONSORTIUM OF	
ORIENTAL CONSULTANTS CO., LTD.	
INTERNATIONAL DEVELOPMENT CENTER OF JAPAN	



JAPAN INTERNATIONAL COOPERATION AGENCY
THE CONSORTIUM OF
ORIENTAL CONSULTANTS CO., LTD.
INTERNATIONAL DEVELOPMENT CENTER OF JAPAN

MINISTRY OF PUBLIC WORKS AND TRANSPORT
LAO PEOPLE'S DEMOCRATIC REPUBLIC

PLAN & PROFILE
SECTION 1: STA 71+700 - 72+400

DATE:

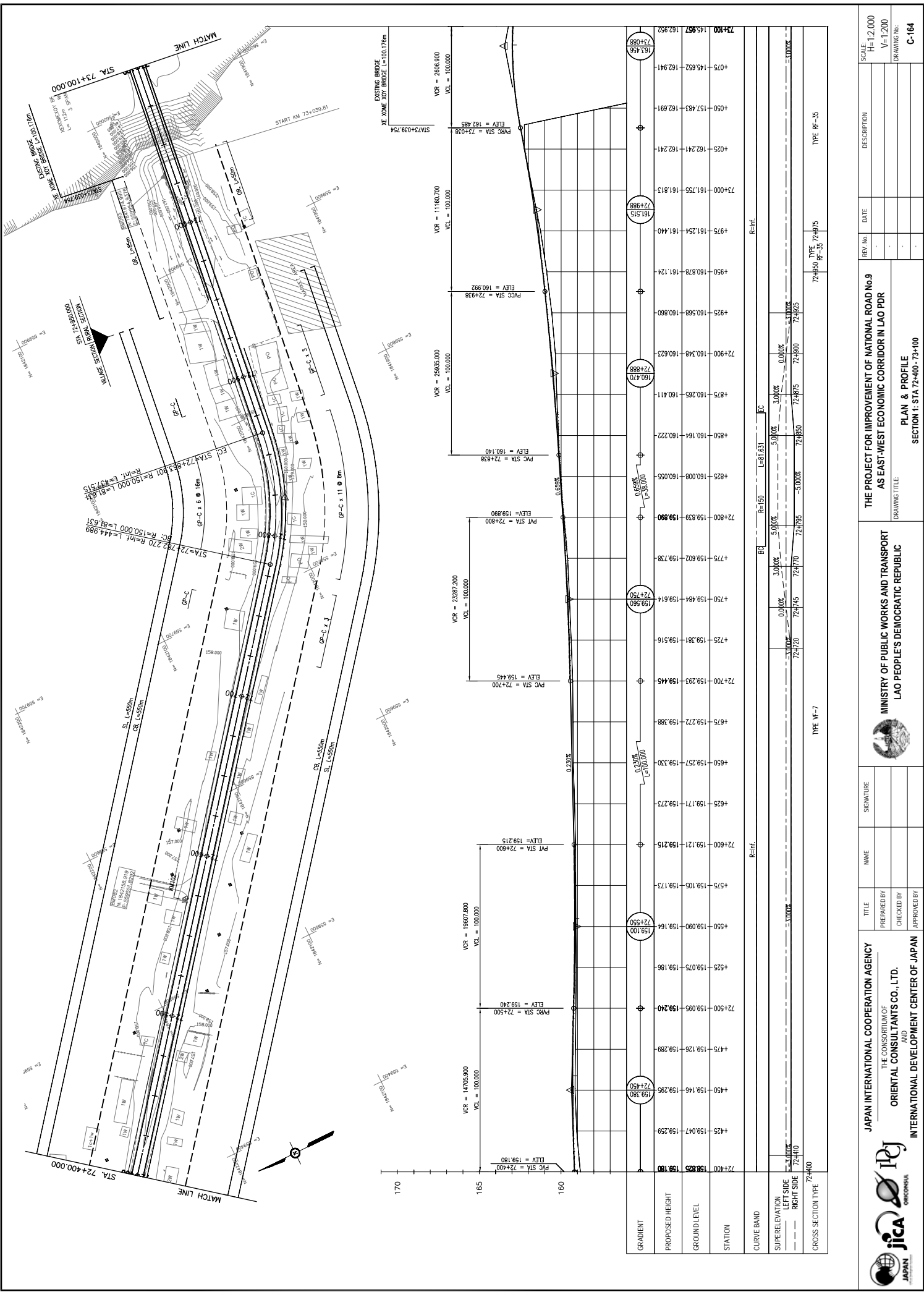
REV No:

DESCRIPTION:

SCALE: H=1:2,000
V=1:200

DRAWING No:

C-163



MINISTRY OF PUBLIC WORKS AND TRANSPORT
LAO PEOPLE'S DEMOCRATIC REPUBLIC

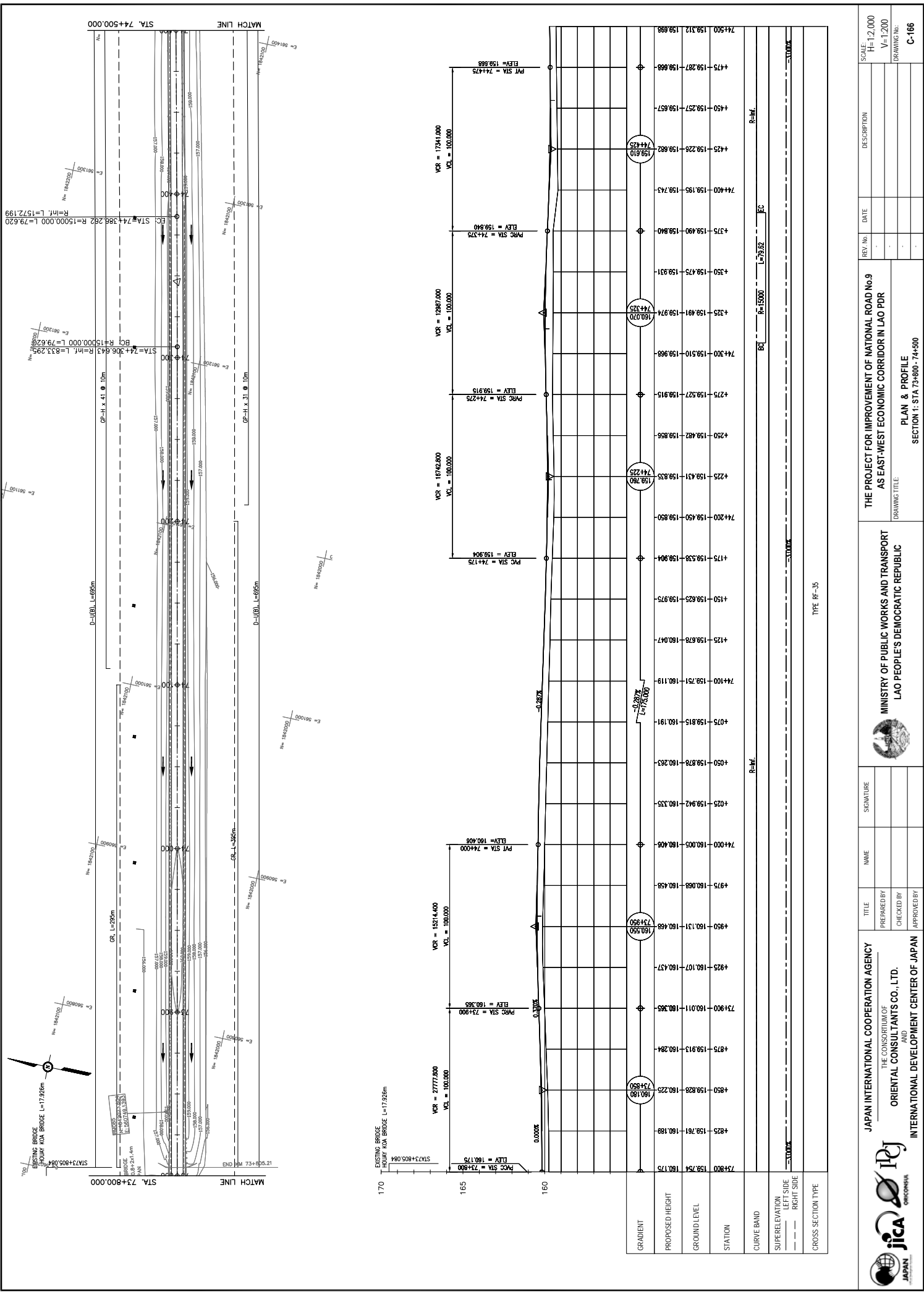
JAPAN INTERNATIONAL COOPERATION AGENCY
THE CONSORTIUM OF
ORIENTAL CONSULTANTS CO., LTD.
INTERNATIONAL DEVELOPMENT CENTER OF JAPAN

PROJECT FOR IMPROVEMENT OF NATIONAL ROAD No.9
AS EAST-WEST ECONOMIC CORRIDOR IN LAO PDR

PLAN & PROFILE
SECTION 1: STA 72+400 - 73+100

REV. No.	DATE	DESCRIPTION

SCALE: H=1:2,000
V=1:200
DRAWING No. **C-164**



REV. No.	DATE	DESCRIPTION

SCALE: H=1:2,000 V=1:200	DRIVING No. C-166
-----------------------------	-------------------

THE PROJECT FOR IMPROVEMENT OF NATIONAL ROAD No.9 AS EAST-WEST ECONOMIC CORRIDOR IN LAO PDR	MINISTRY OF PUBLIC WORKS AND TRANSPORT LAO PEOPLE'S DEMOCRATIC REPUBLIC
--	--

JAPAN INTERNATIONAL COOPERATION AGENCY THE CONSORTIUM OF ORIENTAL CONSULTANTS CO., LTD.	JICA ORIENTAL CONSULTANTS
---	------------------------------

INTERNATIONAL DEVELOPMENT CENTER OF JAPAN	PLAN & PROFILE SECTION 1: STA 73+800 - 74+500
---	--

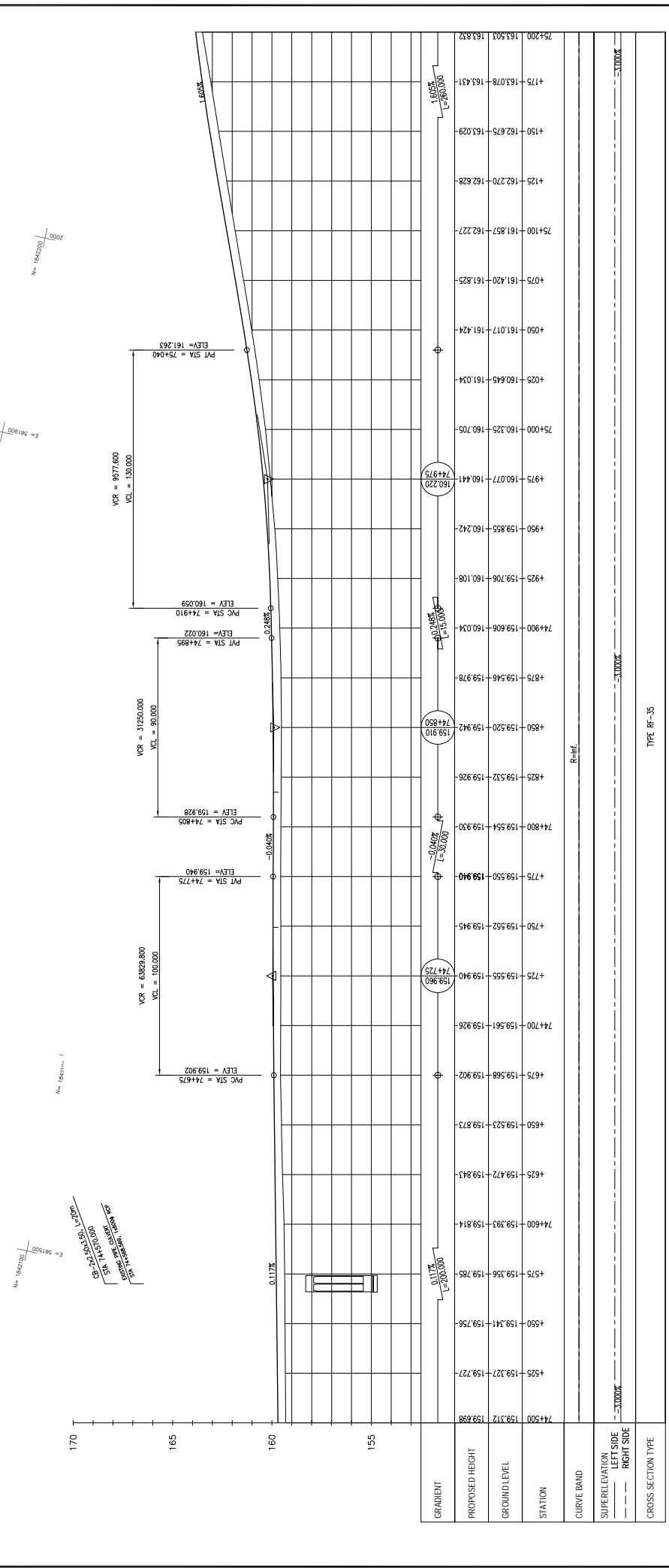
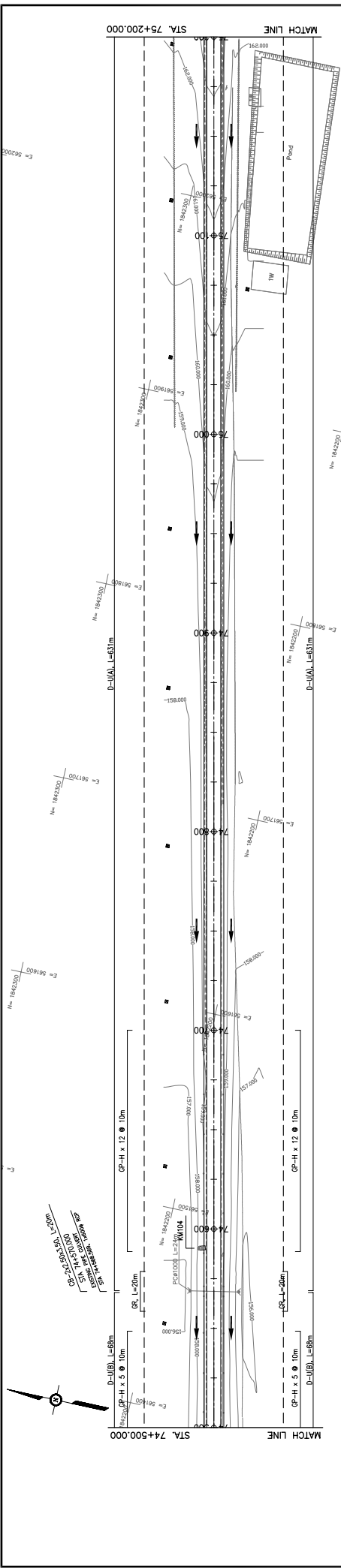
TITLE	SIGNATURE
PREPARED BY	
CHECKED BY	
APPROVED BY	

NAME	
------	--

DATE	
------	--

DESCRIPTION	
-------------	--

TYPE: RF-35



STATION	PROPOSED HEIGHT	GROUND LEVEL	GRADIENT
74+500	193.312	193.898	
4+25	159.327	159.272	
4+50	159.341	159.256	
4+75	159.356	159.285	
74+800	159.393	159.814	
4+25	159.472	159.843	
4+50	159.523	159.873	
4+75	159.568	159.902	
74+700	159.561	159.926	
4+25	159.555	159.940	
4+75	159.552	159.945	
750	159.550	159.940	
74+800	159.554	159.930	
4+25	159.532	159.926	
4+50	159.520	159.942	
4+75	159.546	159.978	
74+900	159.606	160.034	
4+25	159.706	160.108	
4+50	159.853	160.242	
4+75	160.077	160.441	
75+000	160.325	160.705	
4+25	160.645	161.034	
4+50	161.017	161.424	
4+75	161.420	161.825	
75+100	161.857	162.227	
4+25	162.270	162.628	
4+50	162.675	163.029	
4+75	163.078	163.431	
75+200	163.503	163.832	

PLAN & PROFILE
SECTION 1: STA 74+500 - 75+200

DRAWING TITLE

MINISTRY OF PUBLIC WORKS AND TRANSPORT
LAO PEOPLE'S DEMOCRATIC REPUBLIC

THE PROJECT FOR IMPROVEMENT OF NATIONAL ROAD No.9
AS EAST-WEST ECONOMIC CORRIDOR IN LAO PDR

SCALE: H=1:2,000
V=1:200

DRAWING NO. C-167

REV. No.	DATE	DESCRIPTION

SIGNATURE

NAME

TITLE

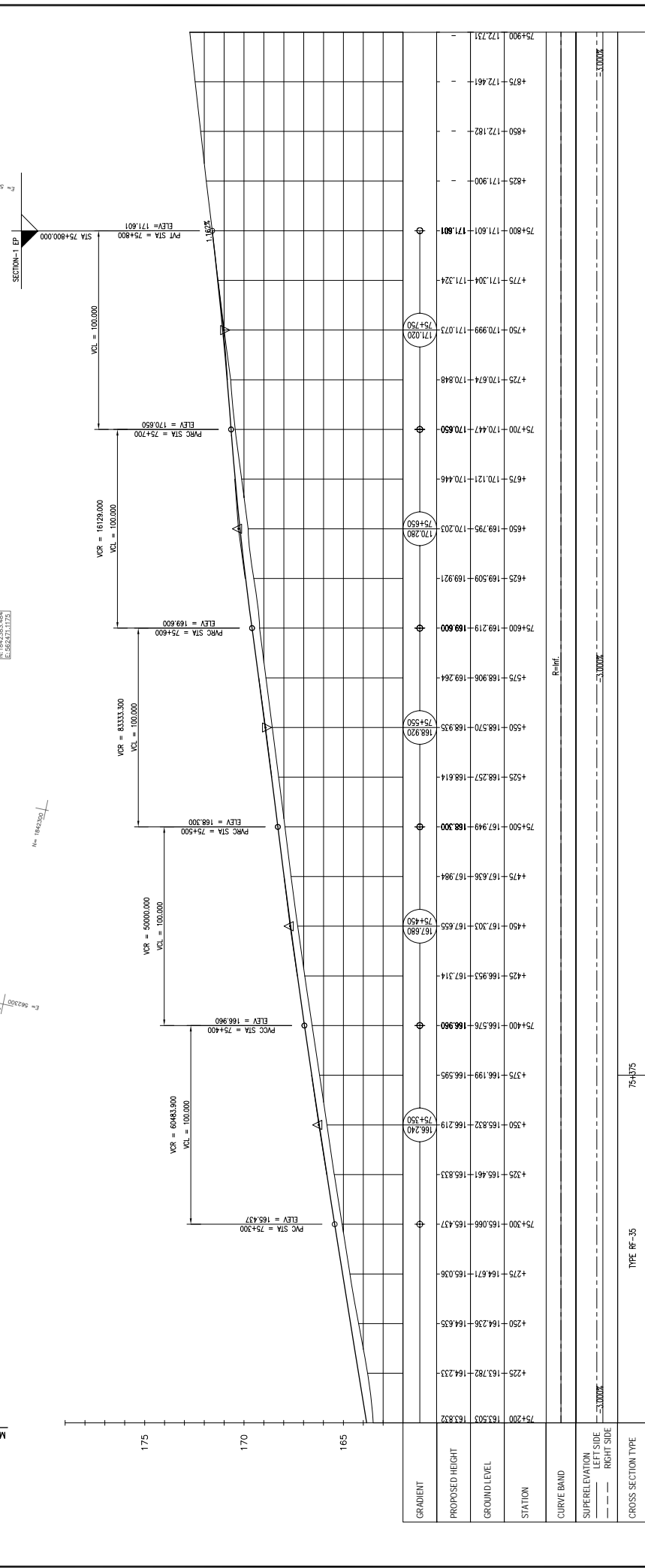
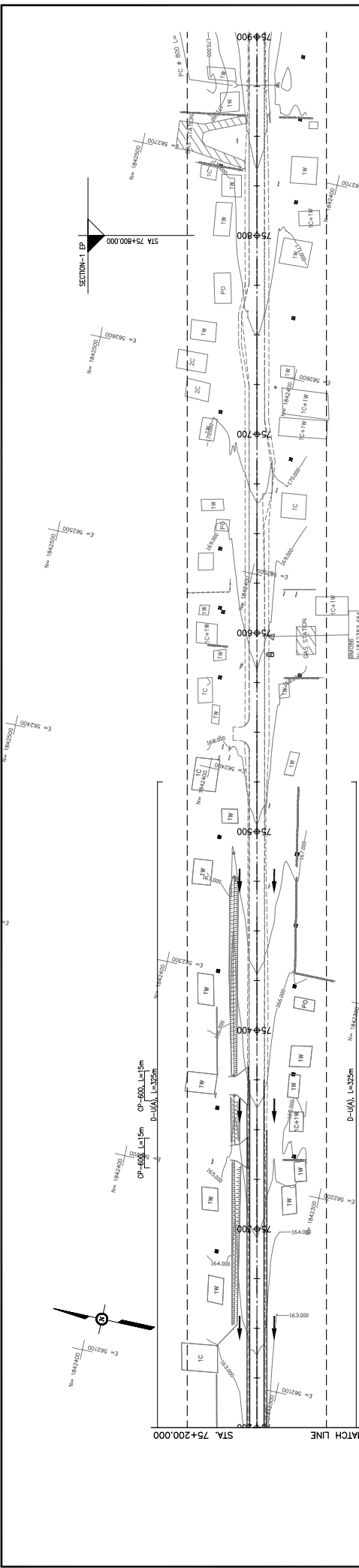
PREPARED BY

CHECKED BY

APPROVED BY

JAPAN INTERNATIONAL COOPERATION AGENCY
THE CONSORTIUM OF
ORIENTAL CONSULTANTS CO., LTD.
INTERNATIONAL DEVELOPMENT CENTER OF JAPAN

jica
ORIENTAL CONSULTANTS
ICJ



GRADIENT	PROPOSED HEIGHT	GROUND LEVEL	STATION	CURVE BAND	SUPERELEVATION LEFT SIDE RIGHT SIDE	CROSS SECTION TYPE
			75+200			TYPE RF-35
			75+200			
			75+250			
			75+300			
			75+350			
			75+400			
			75+450			
			75+500			
			75+550			
			75+600			
			75+650			
			75+700			
			75+750			
			75+800			
			75+850			
			75+900			

MINISTRY OF PUBLIC WORKS AND TRANSPORT
LAO PEOPLE'S DEMOCRATIC REPUBLIC

JAPAN INTERNATIONAL COOPERATION AGENCY
THE CONSORTIUM OF
ORIENTAL CONSULTANTS CO., LTD.
INTERNATIONAL DEVELOPMENT CENTER OF JAPAN

PLAN & PROFILE
SECTION 1: STA 75+200 - 75+900

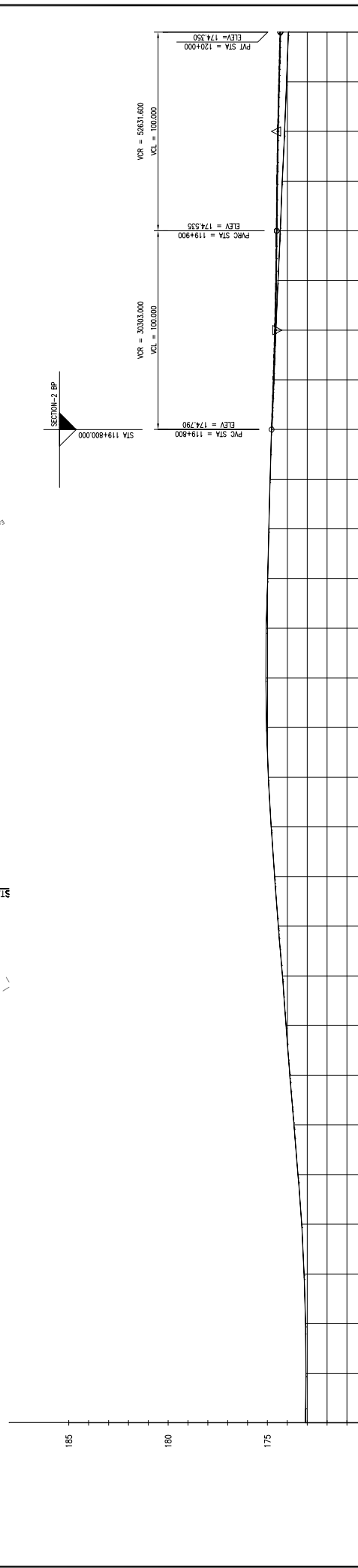
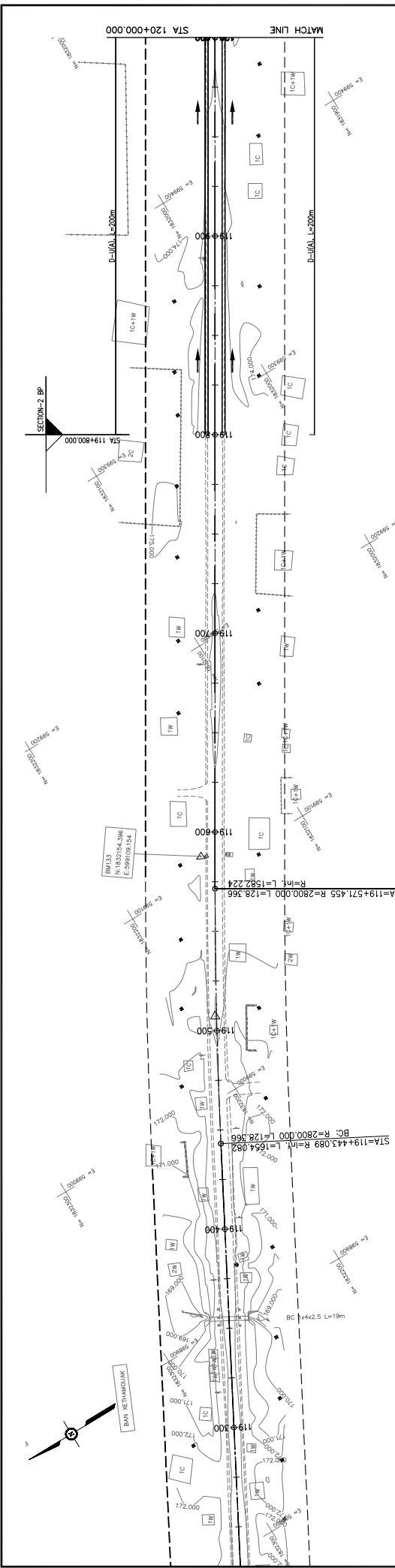
DRAWING TITLE

THE PROJECT FOR IMPROVEMENT OF NATIONAL ROAD No.9
AS EAST-WEST ECONOMIC CORRIDOR IN LAO PDR

REV. No.	DATE	DESCRIPTION

SCALE: H=1:2,000
V=1:200

DRAWING No. **C-168**



GRADIENT	PROPOSED HEIGHT	GROUND LEVEL	STATION
			119+300 173.081
			119+400 173.460
			119+425 173.556
			119+450 173.662
			119+475 173.873
			119+500 174.061
			119+525 174.244
			119+550 174.452
			119+575 174.639
			119+600 174.808
			119+625 174.954
			119+650 175.041
			119+675 175.089
			119+700 175.082
			119+725 174.986
			119+750 174.926
			119+775 174.863
			119+800 174.790
			119+825 174.673
			119+850 174.572
			119+875 174.461
			119+900 174.351
			119+925 174.249
			119+950 174.133
			119+975 174.033
			120+000 173.941

TYPE: RP-40

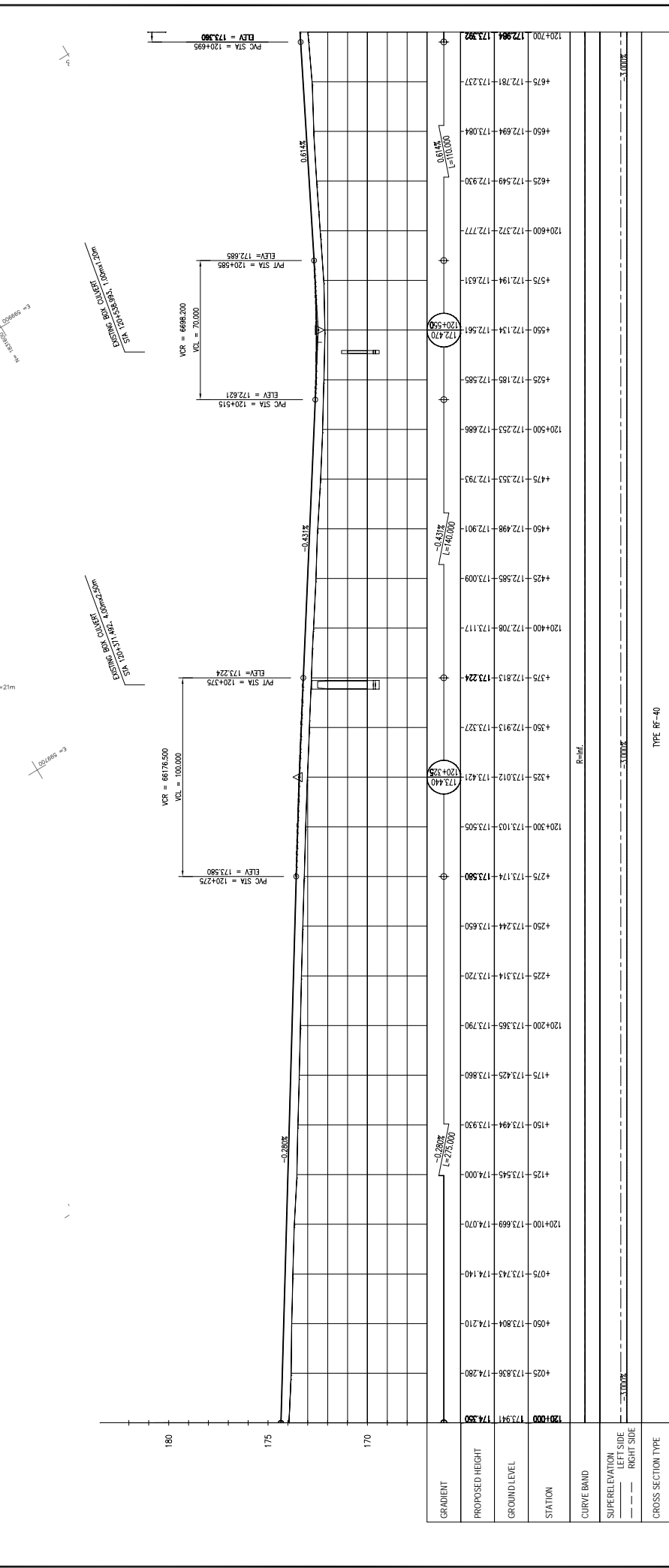
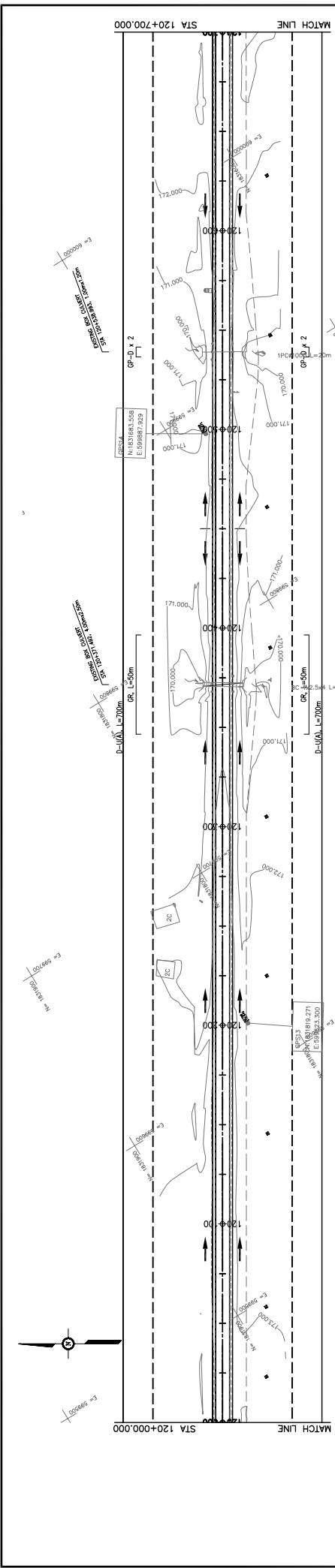
JAPAN INTERNATIONAL COOPERATION AGENCY
 THE CONSORTIUM OF
ORIENTAL CONSULTANTS CO., LTD.
INTERNATIONAL DEVELOPMENT CENTER OF JAPAN

MINISTRY OF PUBLIC WORKS AND TRANSPORT
LAO PEOPLE'S DEMOCRATIC REPUBLIC

THE PROJECT FOR IMPROVEMENT OF NATIONAL ROAD No.9
AS EAST-WEST ECONOMIC CORRIDOR IN LAO PDR

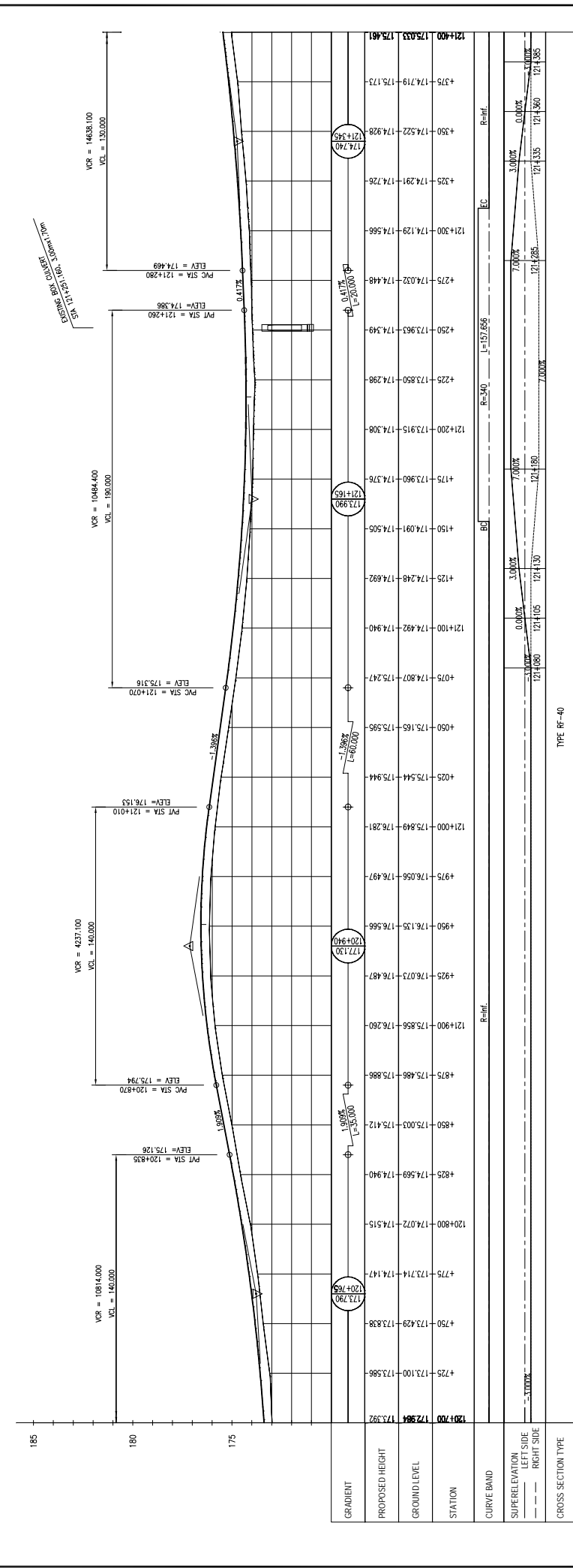
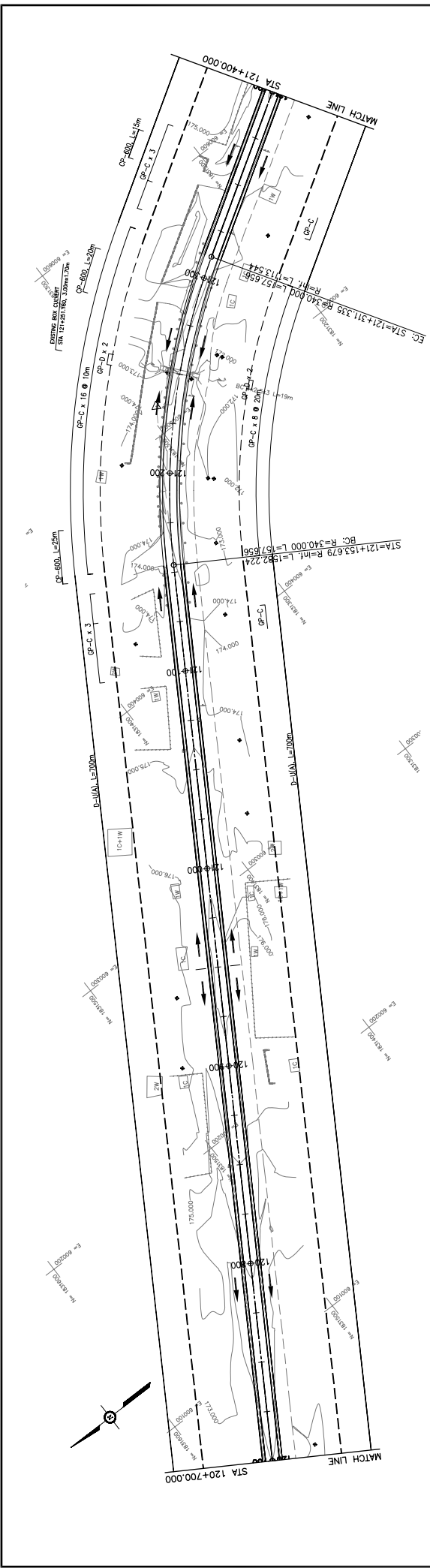
PLAN & PROFILE
SECTION 2: STA. 119+300 - 120+000

DRAWING TITLE: PLAN & PROFILE
 DRAWING NO.: C-201
 SCALE: H=1:2,000 V=1:200
 DATE: . . .
 REV. No.: . . .
 DESCRIPTION: . . .



TYPE: Rf-40

		JAPAN INTERNATIONAL COOPERATION AGENCY THE CONSORTIUM OF ORIENTAL CONSULTANTS CO., LTD. INTERNATIONAL DEVELOPMENT CENTER OF JAPAN		MINISTRY OF PUBLIC WORKS AND TRANSPORT LAO PEOPLE'S DEMOCRATIC REPUBLIC		THE PROJECT FOR IMPROVEMENT OF NATIONAL ROAD No.9 AS EAST-WEST ECONOMIC CORRIDOR IN LAO PDR		DRAWING TITLE PLAN & PROFILE SECTION 2: STA. 120+000 - 120+700	
TITLE	NAME	SIGNATURE	DATE	REV. No.	DESCRIPTION	SCALE:	H=1:2,000 V=1:200 DRAWING No.: C-202		
PREPARED BY	CHECKED BY	APPROVED BY							



STATION	PROPOSED HEIGHT	GROUND LEVEL	GRADIENT
121+400	175.033	175.461	
121+375	174.719	175.173	
121+350	174.522	174.928	
121+325	174.291	174.726	
121+300	174.129	174.568	
121+275	174.032	174.448	
121+250	173.965	174.349	
121+225	173.850	174.298	
121+200	173.915	174.308	
121+175	173.980	174.376	
121+150	174.091	174.505	
121+125	174.248	174.692	
121+100	174.492	174.940	
121+075	174.807	175.247	
121+050	175.165	175.595	
121+025	175.544	175.944	
121+000	175.849	176.281	
120+975	176.056	176.497	
120+950	176.135	176.566	
120+925	176.073	176.487	
120+900	175.856	176.280	
120+875	175.486	175.886	
120+850	175.003	175.412	
120+825	174.569	174.940	
120+800	174.072	174.515	
120+775	173.714	174.147	
120+750	173.429	173.838	
120+725	173.100	173.586	
120+700	172.804	173.292	

TITLE	NAME	SIGNATURE
PREPARED BY		
CHECKED BY		
APPROVED BY		

JAPAN INTERNATIONAL COOPERATION AGENCY
 THE CONSORTIUM OF
ORIENTAL CONSULTANTS CO., LTD.
 INTERNATIONAL DEVELOPMENT CENTER OF JAPAN

MINISTRY OF PUBLIC WORKS AND TRANSPORT
LAO PEOPLE'S DEMOCRATIC REPUBLIC

THE PROJECT FOR IMPROVEMENT OF NATIONAL ROAD No.9
AS EAST-WEST ECONOMIC CORRIDOR IN LAO PDR

PLAN & PROFILE
 SECTION 2: STA. 120+700 - 121+400

SCALE: H=1:2,000
 V=1:200
 DRAWING NO.: C-203