

STATION	GROUND LEVEL	PROPOSED HEIGHT	GRADIENT
49+300	179.844	180.105	
4+325	179.910	180.318	
4+350	180.137	180.531	
4+375	180.357	180.744	
49+400	180.572	180.957	
4+425	180.787	181.170	
4+450	181.003	181.383	
4+475	181.219	181.596	
49+500	181.434	181.809	
4+525	181.649	182.022	
4+550	181.858	182.235	
4+575	182.065	182.448	
49+600	182.272	182.662	
4+625	182.491	182.875	
4+650	182.763	183.088	
4+675	182.938	183.286	
49+700	183.076	183.456	
4+725	183.222	183.597	
4+750	183.307	183.709	
4+775	183.350	183.793	
49+800	183.399	183.847	
4+825	183.442	183.873	
4+850	183.453	183.870	
4+875	183.437	183.852	
49+900	183.411	183.834	
4+925	183.387	183.817	
4+950	183.376	183.799	
4+975	183.375	183.782	
50+000	183.363	183.764	

TYPE: RF-35

JAPAN INTERNATIONAL COOPERATION AGENCY
 THE CONSORTIUM OF
 ORIENTAL CONSULTANTS CO., LTD.
 INTERNATIONAL DEVELOPMENT CENTER OF JAPAN

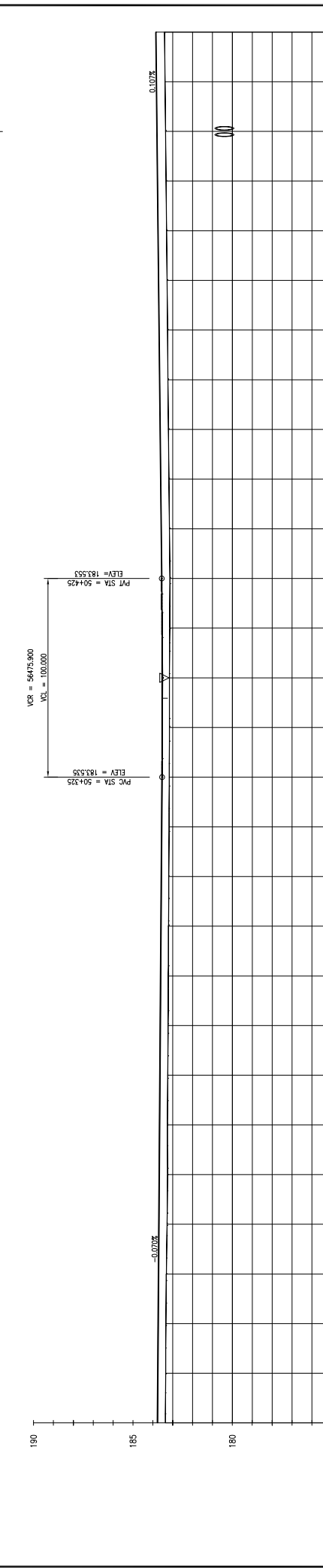
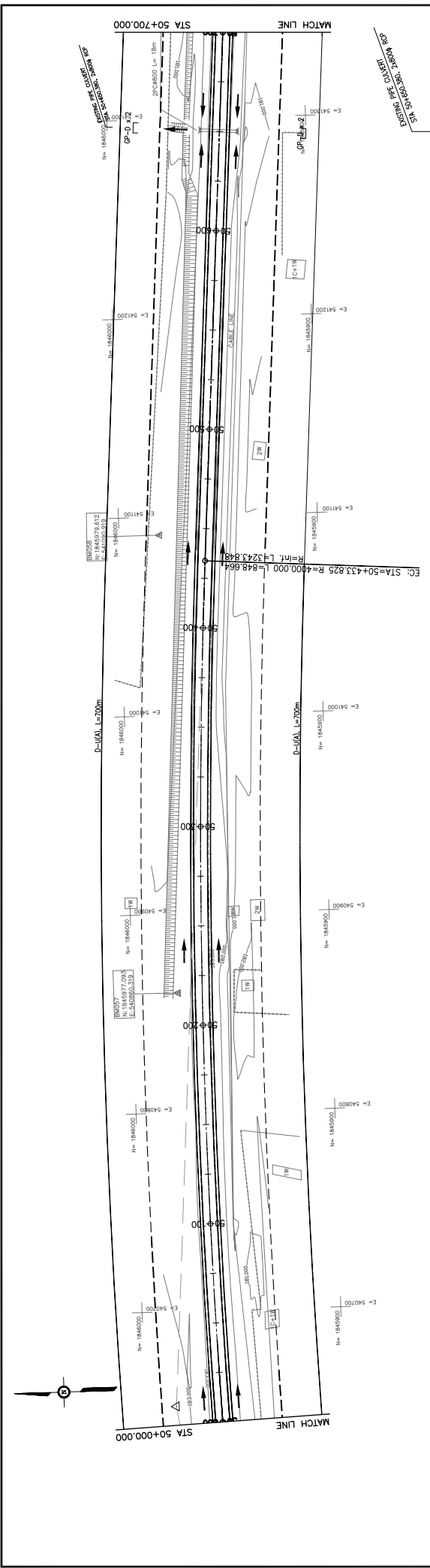
MINISTRY OF PUBLIC WORKS AND TRANSPORT
 LAO PEOPLE'S DEMOCRATIC REPUBLIC

THE PROJECT FOR IMPROVEMENT OF NATIONAL ROAD No.9
 AS EAST-WEST ECONOMIC CORRIDOR IN LAO PDR

DRAWING TITLE: PLAN & PROFILE
 SECTION 1: STA 49+300 - 50+000

REV. No.	DATE	DESCRIPTION
1		
2		
3		

SCALE: H=1:2,000
 V=1:200
 DRAWING No.: C-131



STATION	GROUND LEVEL	PROPOSED HEIGHT	GRADIENT
50+000	183.363	183.764	
4025	183.350	183.746	
4050	183.343	183.729	
4075	183.318	183.711	
50+100	183.280	183.694	
4125	183.257	183.676	
4150	183.262	183.658	
4175	183.242	183.641	
50+200	183.228	183.623	
4225	183.217	183.606	
4250	183.208	183.588	
4275	183.192	183.570	
50+300	183.180	183.553	
4325	183.171	183.535	
4350	183.164	183.523	
4375	183.160	183.522	
50+400	183.146	183.522	
4425	183.137	183.553	
4450	183.162	183.580	
4475	183.186	183.607	
50+500	183.210	183.633	
4525	183.234	183.660	
4550	183.258	183.687	
4575	183.282	183.713	
50+600	183.306	183.740	
4625	183.331	183.767	
4650	183.355	183.793	
4675	183.379	183.820	
50+700	183.403	183.847	

TYPE: RF-35

JAPAN INTERNATIONAL COOPERATION AGENCY
 THE CONSORTIUM OF
ORIENTAL CONSULTANTS CO., LTD.
INTERNATIONAL DEVELOPMENT CENTER OF JAPAN

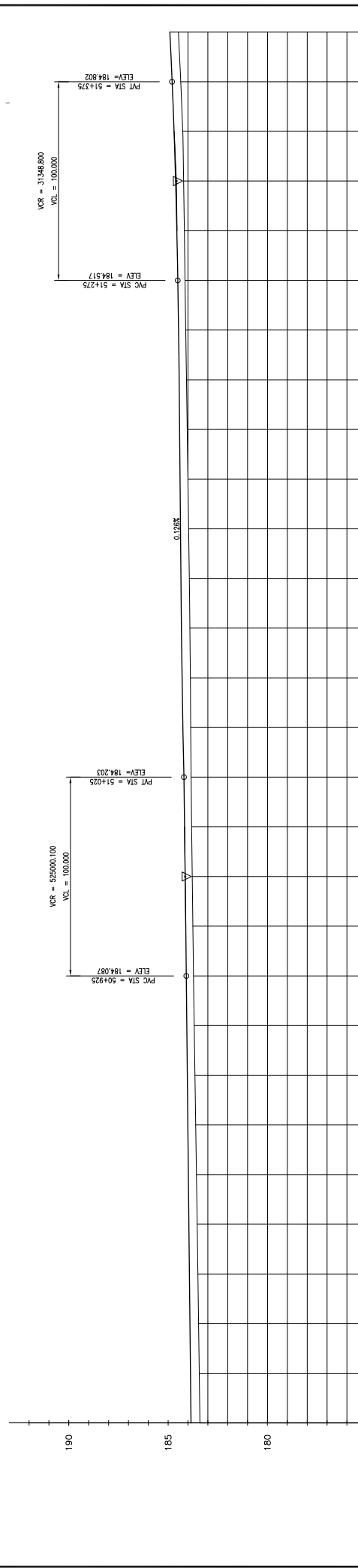
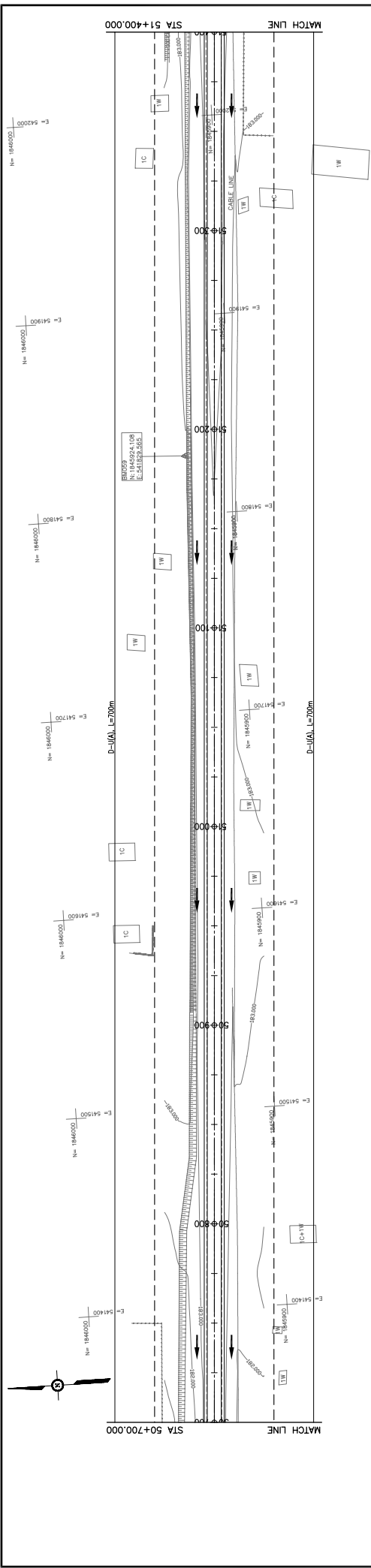
MINISTRY OF PUBLIC WORKS AND TRANSPORT
LAO PEOPLE'S DEMOCRATIC REPUBLIC

THE PROJECT FOR IMPROVEMENT OF NATIONAL ROAD No.9
AS EAST-WEST ECONOMIC CORRIDOR IN LAO PDR

PLAN & PROFILE
SECTION 1: STA 50+000 - 50+700

REV. No.	DATE	DESCRIPTION

SCALE: H=1:2,000
 V=1:200
 DRAWING No.: **C-132**



STATION	GROUND LEVEL	PROPOSED HEIGHT	GRADIENT
50+700	183.403	183.471	
50+725	183.429	183.873	
50+750	183.466	183.900	
50+775	183.503	183.927	
50+800	183.540	183.953	
50+825	183.577	183.980	
50+850	183.613	184.007	
50+875	183.650	184.033	
50+900	183.687	184.060	
50+925	183.723	184.087	
50+950	183.761	184.114	
50+975	183.791	184.142	
51+000	183.815	184.172	
51+025	183.837	184.203	
51+050	183.861	184.234	
51+075	183.884	184.266	
51+100	183.906	184.297	
51+125	183.930	184.329	
51+150	183.966	184.360	
51+175	184.002	184.391	
51+200	184.039	184.423	
51+225	184.077	184.454	
51+250	184.114	184.486	
51+275	184.151	184.517	
51+300	184.187	184.559	
51+325	184.224	184.630	
51+350	184.262	184.701	
51+375	184.303	184.802	
51+400	184.484	184.914	

TYPE: RF-35

JAPAN INTERNATIONAL COOPERATION AGENCY
 THE CONSORTIUM OF
 ORIENTAL CONSULTANTS CO., LTD.
 INTERNATIONAL DEVELOPMENT CENTER OF JAPAN

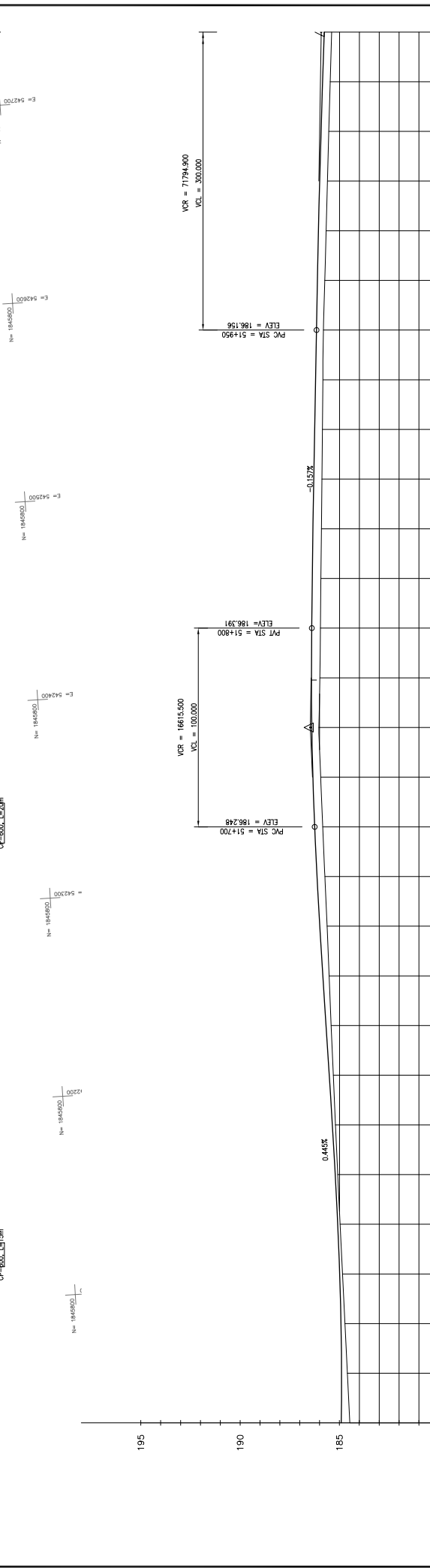
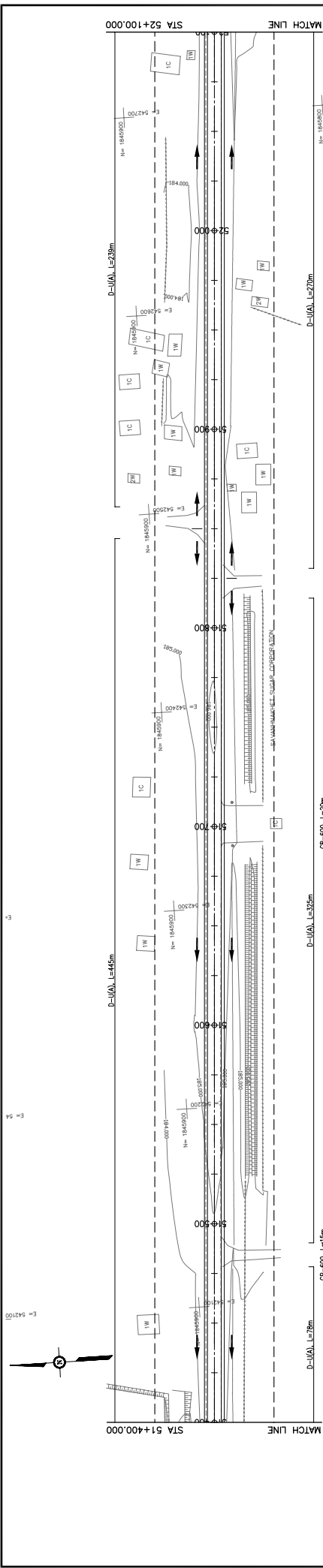
MINISTRY OF PUBLIC WORKS AND TRANSPORT
 LAO PEOPLE'S DEMOCRATIC REPUBLIC

THE PROJECT FOR IMPROVEMENT OF NATIONAL ROAD No.9
 AS EAST-WEST ECONOMIC CORRIDOR IN LAO PDR

DRAWING TITLE: PLAN & PROFILE
 SECTION 1: STA 50+700 - 51+400

REV. No.	DATE	DESCRIPTION
1		
2		
3		
4		

SCALE: H=1:2,000
 V=1:200
 DRAWING No.: C-133



STATION	GROUND LEVEL	PROPOSED HEIGHT	GRADIENT
51+700	185.841	186.248	
51+750	185.986	186.412	
51+800	185.960	186.391	
51+850	185.936	186.352	
51+900	185.860	186.234	
51+950	185.811	186.156	
52+000	185.675	186.080	
52+050	185.537	185.929	
52+100	185.398	185.850	

TYPE: RF-35

MINISTRY OF PUBLIC WORKS AND TRANSPORT
LAO PEOPLE'S DEMOCRATIC REPUBLIC

JAPAN INTERNATIONAL COOPERATION AGENCY
THE CONSORTIUM OF
ORIENTAL CONSULTANTS CO., LTD.
INTERNATIONAL DEVELOPMENT CENTER OF JAPAN

PLAN & PROFILE
SECTION 1: STA 51+400 - 52+100

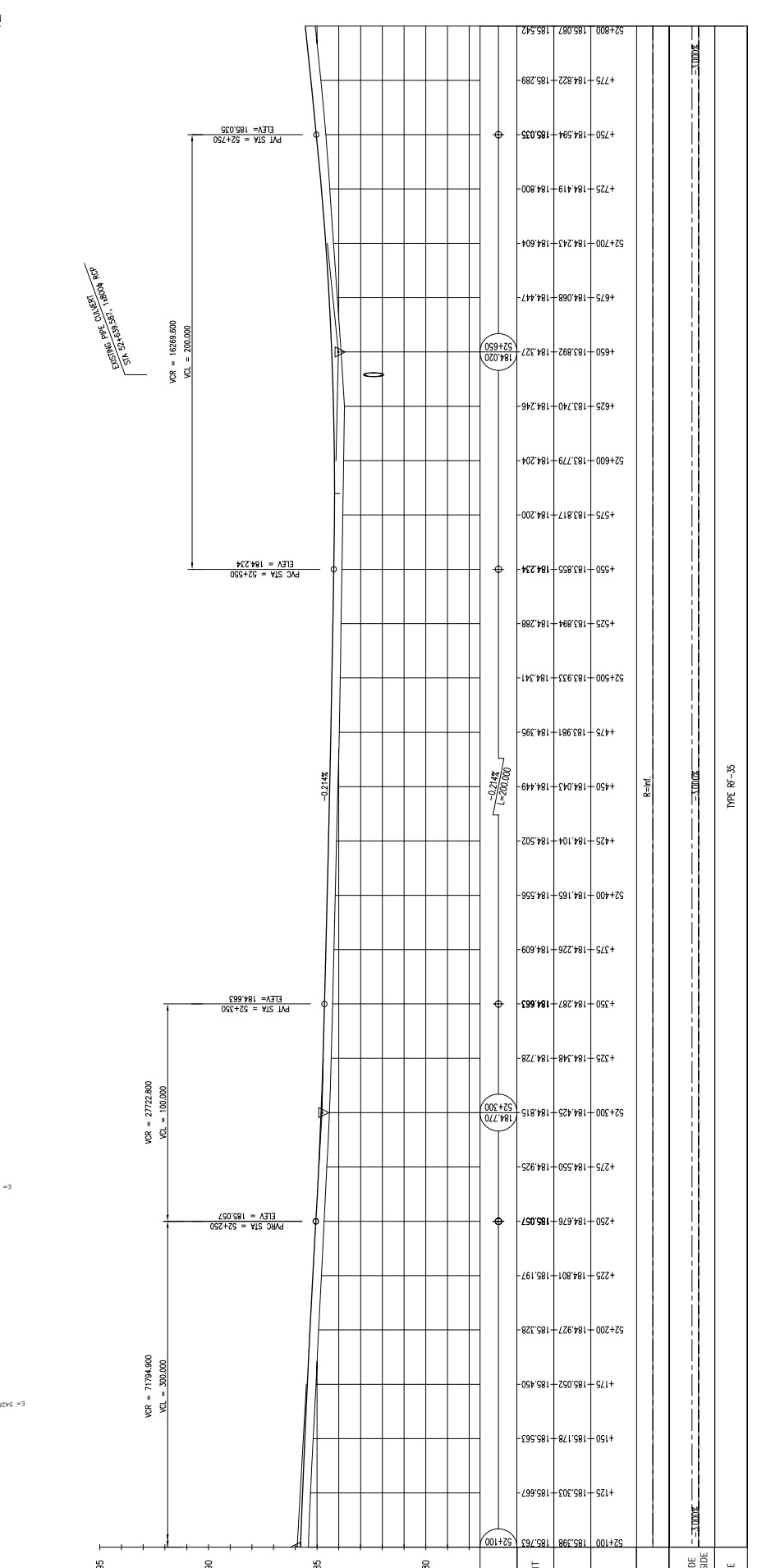
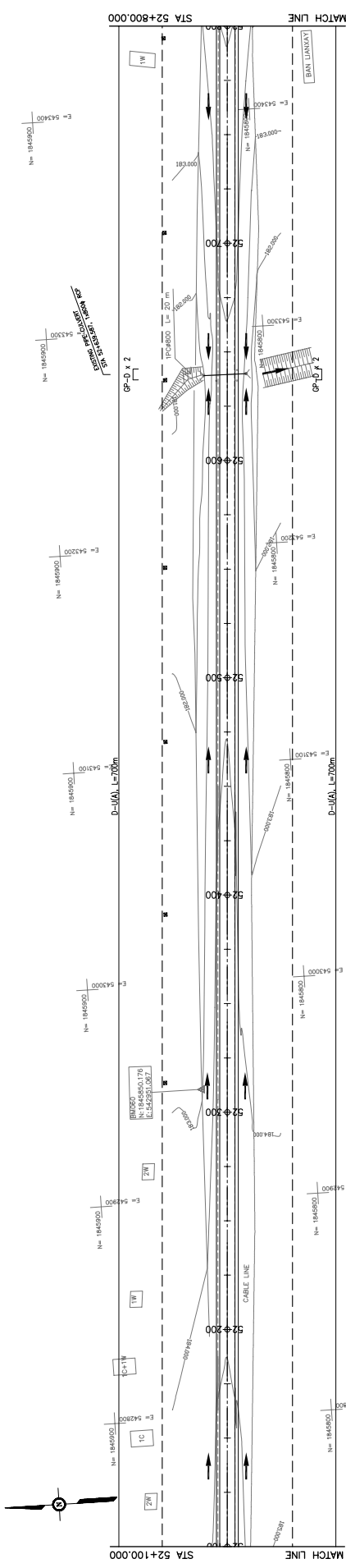
DRAWING TITLE

THE PROJECT FOR IMPROVEMENT OF NATIONAL ROAD No.9
AS EAST-WEST ECONOMIC CORRIDOR IN LAO PDR

REV. No.	DATE	DESCRIPTION

SCALE: H=1:2,000
V=1:200

DRAWING No. **C-134**



STATION	PROPOSED HEIGHT	GROUND LEVEL	GRADIENT
52+100	185.398	185.763	184.770
52+125	185.303	185.667	
52+150	185.178	185.563	
52+175	185.052	185.450	
52+200	184.927	185.328	
52+225	184.801	185.197	
52+250	184.676	185.057	
52+275	184.550	184.925	
52+300	184.425	184.815	184.770
52+325	184.348	184.728	
52+350	184.287	184.663	
52+375	184.228	184.609	
52+400	184.165	184.556	
52+425	184.104	184.502	
52+450	184.043	184.449	
52+475	183.981	184.395	
52+500	183.933	184.341	
52+525	183.894	184.288	
52+550	183.855	184.234	
52+575	183.817	184.200	
52+600	183.779	184.204	
52+625	183.740	184.246	
52+650	183.692	184.327	184.020
52+675	184.068	184.447	
52+700	184.243	184.604	
52+725	184.419	184.800	
52+750	184.594	185.035	
52+775	184.822	185.289	
52+800	185.087	185.542	

MINISTRY OF PUBLIC WORKS AND TRANSPORT
LAO PEOPLE'S DEMOCRATIC REPUBLIC

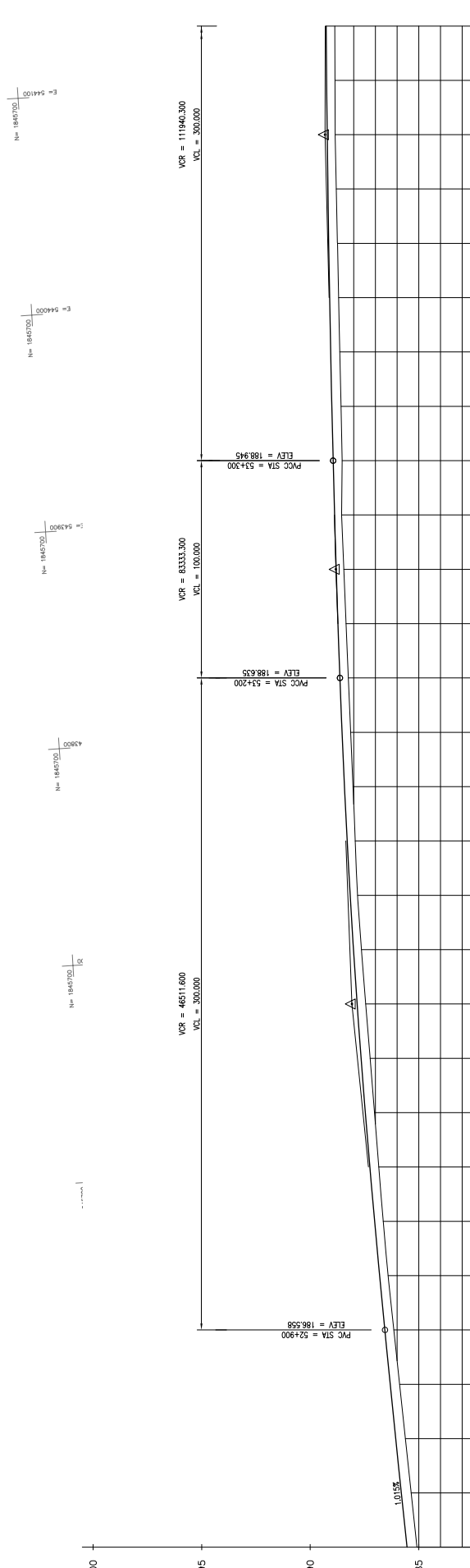
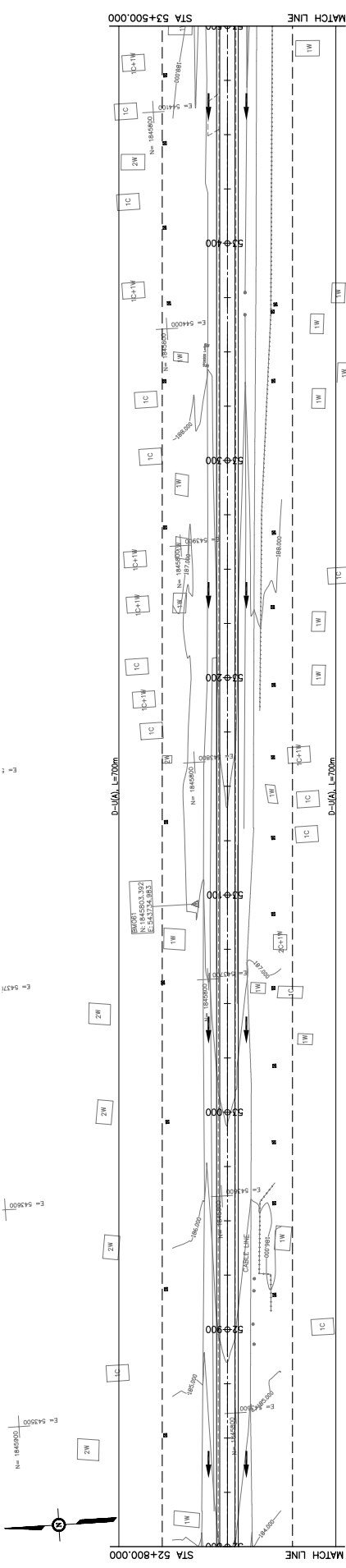
THE PROJECT FOR IMPROVEMENT OF NATIONAL ROAD No.9
AS EAST-WEST ECONOMIC CORRIDOR IN LAO PDR

DRAWING TITLE: **PLAN & PROFILE**
SECTION 1: STA 52+100 - 52+800

DATE	REV. No.	DESCRIPTION	SCALE:
			H=1:2,000 V=1:200

DRAWING No. **C-135**





STATION	GROUND LEVEL	PROPOSED HEIGHT	GRADIENT
52+800	185.087	185.542	1.03%
4825	185.533	185.796	1.03%
4850	185.618	186.050	1.03%
4875	185.884	186.304	1.03%
52+900	186.150	186.558	1.03%
4925	186.416	186.805	1.03%
4950	186.644	187.038	1.03%
4975	186.842	187.258	1.03%
53+000	187.042	187.465	1.03%
4025	187.242	187.658	1.03%
4050	187.443	187.838	1.03%
4075	187.643	188.005	1.03%
53+100	187.821	188.158	1.03%
4125	187.930	188.297	1.03%
4150	188.033	188.423	1.03%
4175	188.139	188.536	1.03%
53+200	188.243	188.635	1.03%
4225	188.348	188.724	1.03%
4250	188.452	188.805	1.03%
4275	188.557	188.879	1.03%
53+300	188.530	188.945	1.03%
4325	188.584	189.005	1.03%
4350	188.638	189.059	1.03%
4375	188.692	189.107	1.03%
53+400	188.745	189.150	1.03%
4425	188.799	189.188	1.03%
4450	188.849	189.219	1.03%
4475	188.863	189.246	1.03%
53+500	188.864	189.266	1.03%

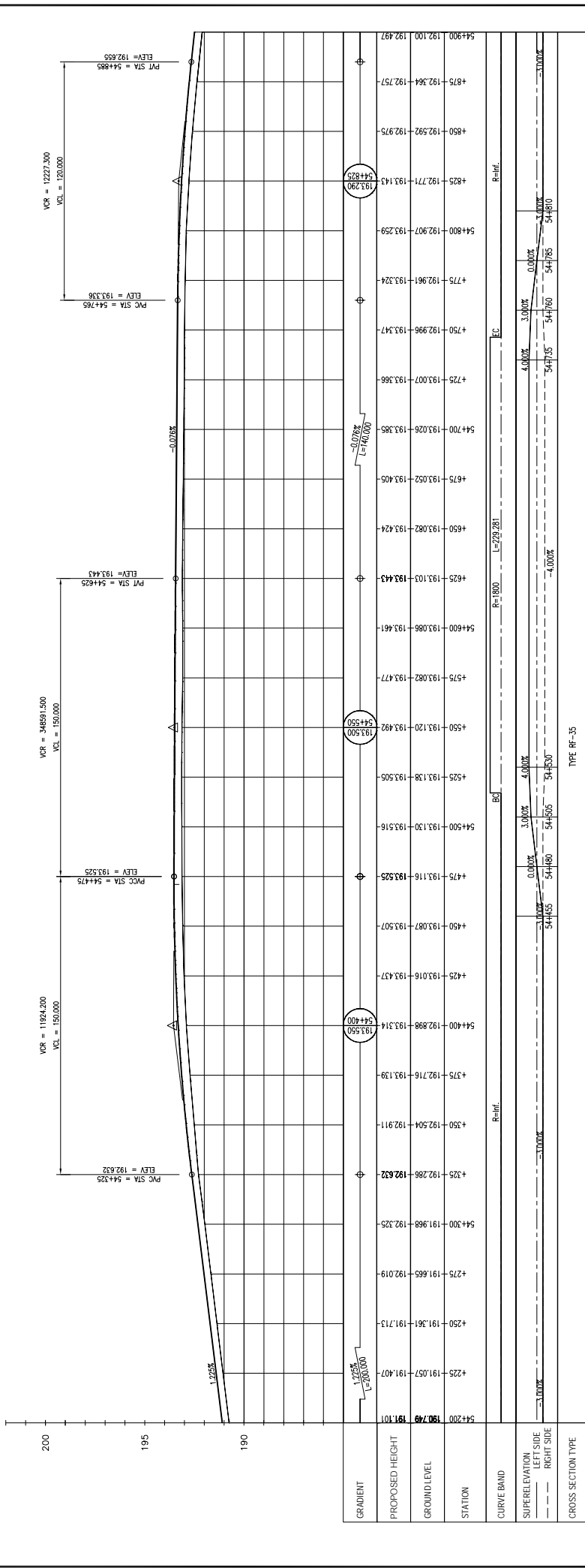
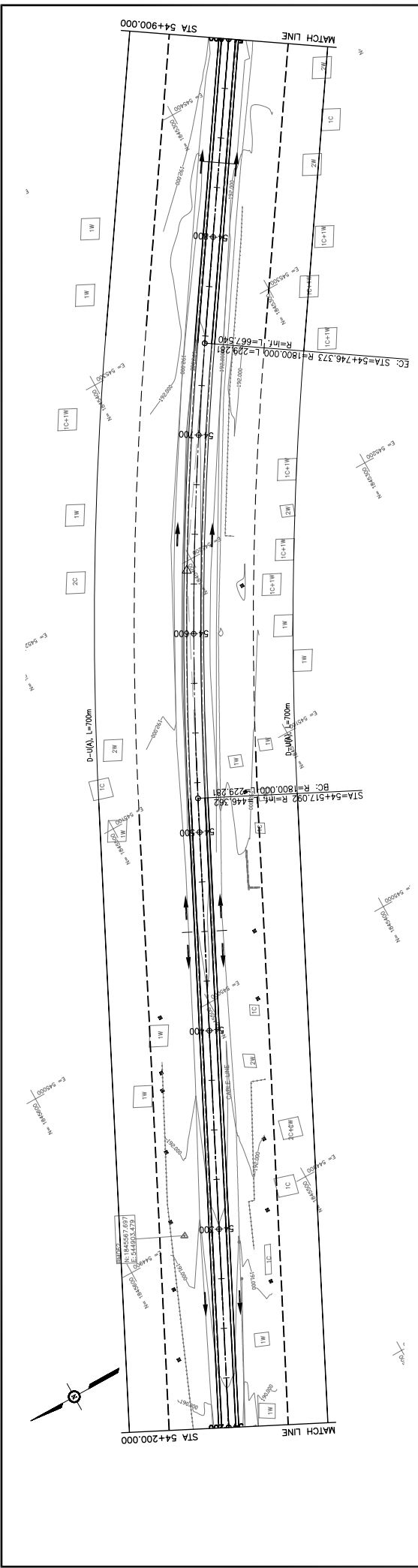
TYPE: RF-35

JAPAN INTERNATIONAL COOPERATION AGENCY THE CONSORTIUM OF ORIENTAL CONSULTANTS CO., LTD.		INTERNATIONAL DEVELOPMENT CENTER OF JAPAN	
TITLE	NAME	SIGNATURE	
PREPARED BY			
CHECKED BY			
APPROVED BY			

THE PROJECT FOR IMPROVEMENT OF NATIONAL ROAD No.9
 AS EAST-WEST ECONOMIC CORRIDOR IN LAO PDR
 PLAN & PROFILE
 SECTION 1: STA 52+800 - 53+500

SCALE:	H=1:2,000
	V=1:200
REV. No.	DATE
DESCRIPTION	

DRAWING No. C-136



CROSS SECTION TYPE: TYPE RH-35

JAPAN INTERNATIONAL COOPERATION AGENCY
 THE CONSORTIUM OF
 ORIENTAL CONSULTANTS CO., LTD.
 INTERNATIONAL DEVELOPMENT CENTER OF JAPAN

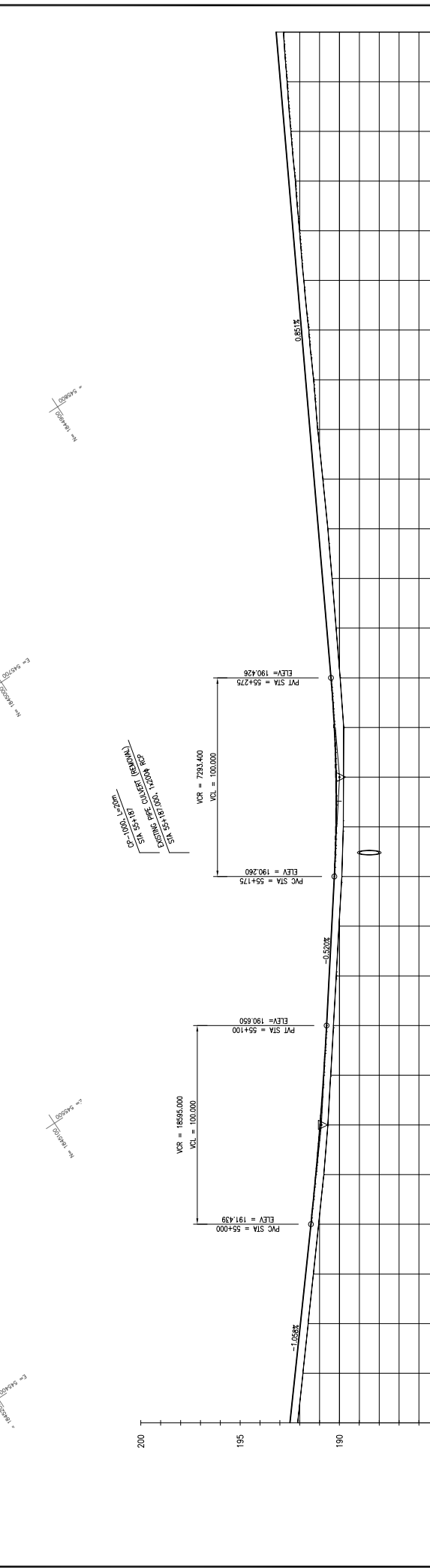
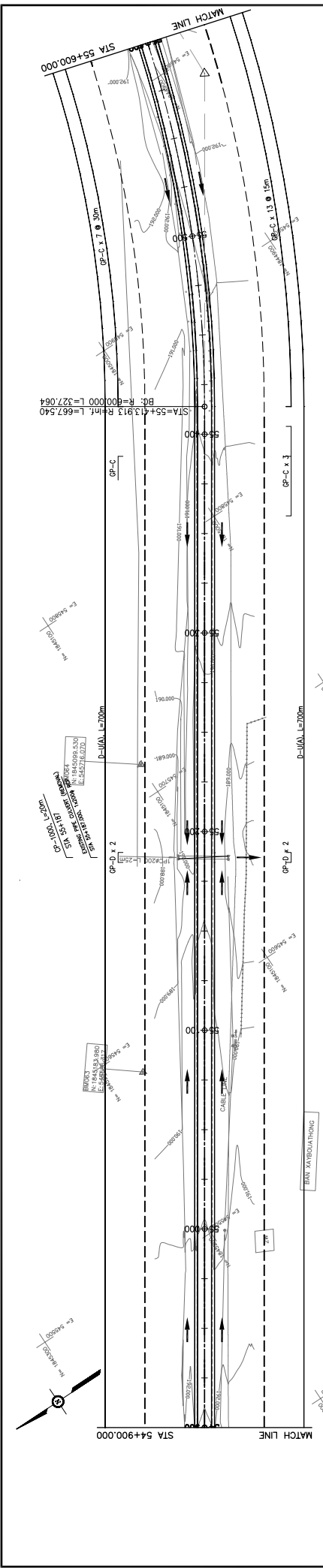
MINISTRY OF PUBLIC WORKS AND TRANSPORT
 LAO PEOPLE'S DEMOCRATIC REPUBLIC

THE PROJECT FOR IMPROVEMENT OF NATIONAL ROAD No.9
 AS EAST-WEST ECONOMIC CORRIDOR IN LAO PDR

DRAWING TITLE: PLAN & PROFILE
 SECTION 1: STA 54+200 - 54+900

REV. No.	DATE	DESCRIPTION
1		
2		
3		

SCALE: H=1:2,000
 V=1:200
 DRAWING No.: C-138



STATION	PROPOSED HEIGHT	GROUND LEVEL	GRADIENT
54+900	192.100	192.497	-0.26%
54+925	191.837	192.232	-0.14%
54+950	191.574	191.968	-0.14%
54+975	191.310	191.703	-0.14%
54+1000	191.047	191.439	-0.14%
54+1025	190.783	191.174	-0.14%
54+1050	190.518	190.909	-0.14%
54+1075	190.254	190.644	-0.14%
54+1100	190.000	190.379	-0.14%
54+1125	189.746	190.114	-0.14%
54+1150	189.492	189.849	-0.14%
54+1175	189.238	189.584	-0.14%
54+1200	188.984	189.319	-0.14%
54+1225	188.730	189.054	-0.14%
54+1250	188.476	188.789	-0.14%
54+1275	188.222	188.524	-0.14%
54+1300	187.968	188.259	-0.14%
54+1325	187.714	187.994	-0.14%
54+1350	187.460	187.729	-0.14%
54+1375	187.206	187.464	-0.14%
54+1400	186.952	187.199	-0.14%
54+1425	186.698	186.934	-0.14%
54+1450	186.444	186.669	-0.14%
54+1475	186.190	186.404	-0.14%
54+1500	185.936	186.139	-0.14%
54+1525	185.682	185.874	-0.14%
54+1550	185.428	185.609	-0.14%
54+1575	185.174	185.344	-0.14%
54+1600	184.920	185.079	-0.14%

TYPE: RP-35

CROSS SECTION TYPE

SUPERELEVATION LEFT SIDE

SUPERELEVATION RIGHT SIDE

CURVE BAND

STATION

GROUND LEVEL

PROPOSED HEIGHT

GRADIENT

JAPAN INTERNATIONAL COOPERATION AGENCY
 THE CONSORTIUM OF
 ORIENTAL CONSULTANTS CO., LTD.
 INTERNATIONAL DEVELOPMENT CENTER OF JAPAN

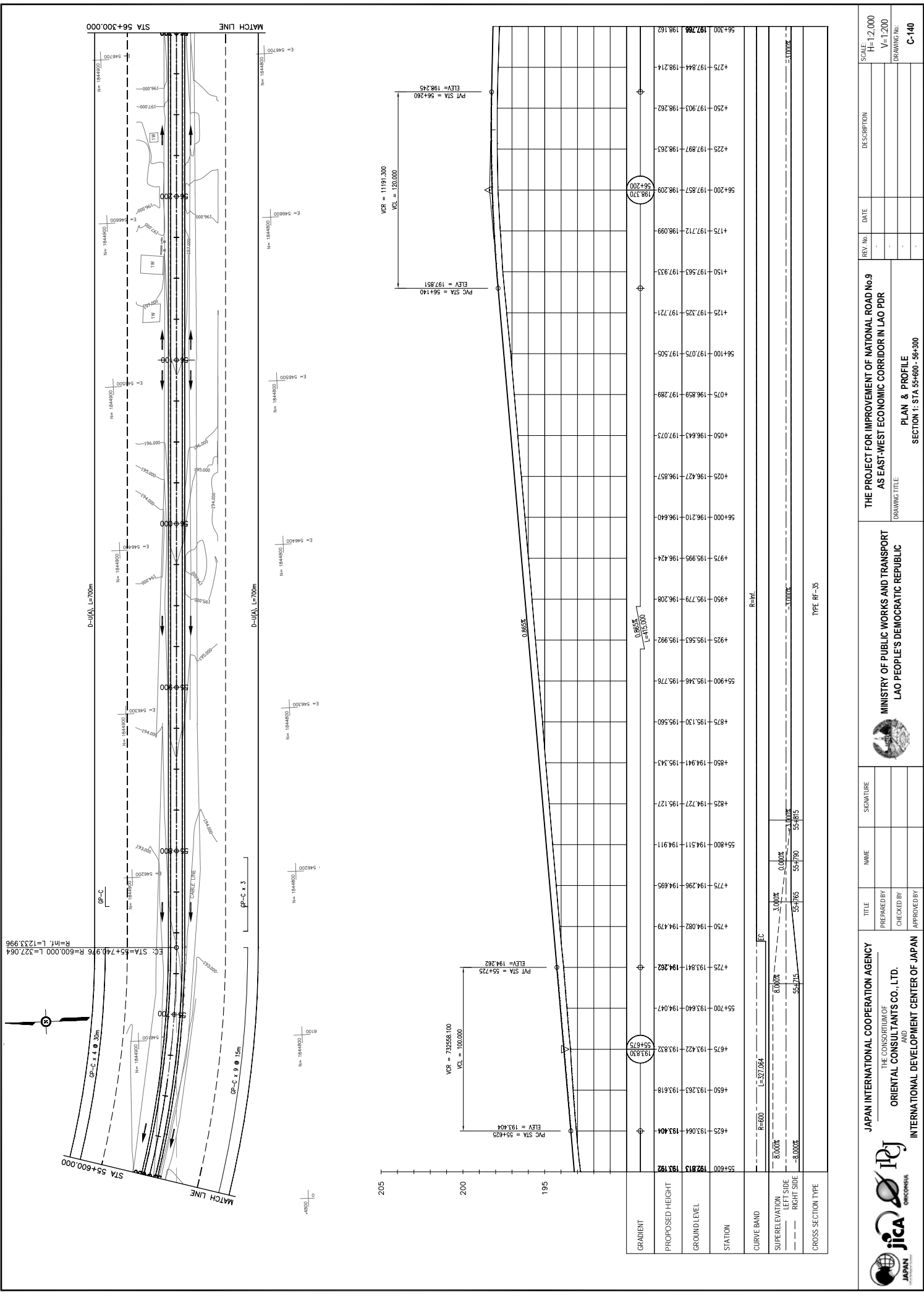
MINISTRY OF PUBLIC WORKS AND TRANSPORT
 LAO PEOPLE'S DEMOCRATIC REPUBLIC

THE PROJECT FOR IMPROVEMENT OF NATIONAL ROAD No.9
 AS EAST-WEST ECONOMIC CORRIDOR IN LAO PDR

DRAWING TITLE: PLAN & PROFILE
 SECTION 1: STA 54+900 - 55+600

REV. No.	DATE	DESCRIPTION
1		
2		
3		

SCALE: H=1:2,000
 V=1:200
 DRAWING No.: C-139



STATION	PROPOSED HEIGHT	GROUND LEVEL
55+600	192.813	193.192
55+700	193.422	193.832
55+800	193.263	193.618
55+900	193.064	193.404
56+000	193.841	194.282
56+100	194.082	194.479
56+200	194.296	194.695
56+300	194.411	194.911
56+400	194.530	195.127
56+500	194.643	195.343
56+600	194.759	195.560
56+700	194.879	195.776
56+800	194.995	195.992
56+900	195.110	196.208
57+000	195.225	196.424
57+100	195.340	196.640
57+200	195.455	196.857
57+300	195.570	197.073
57+400	195.685	197.289
57+500	195.800	197.505
57+600	195.915	197.721
57+700	196.030	197.937
57+800	196.145	198.153
57+900	196.260	198.369
58+000	196.375	198.585
58+100	196.490	198.801
58+200	196.605	199.017
58+300	196.720	199.233
58+400	196.835	199.449
58+500	196.950	199.665
58+600	197.065	199.881
58+700	197.180	200.097
58+800	197.295	200.313
58+900	197.410	200.529
59+000	197.525	200.745
59+100	197.640	200.961
59+200	197.755	201.177
59+300	197.870	201.393
59+400	197.985	201.609
59+500	198.100	201.825
59+600	198.215	202.041
59+700	198.330	202.257
59+800	198.445	202.473
59+900	198.560	202.689
60+000	198.675	202.905

JAPAN INTERNATIONAL COOPERATION AGENCY
 THE CONSORTIUM OF
ORIENTAL CONSULTANTS CO., LTD.
 INTERNATIONAL DEVELOPMENT CENTER OF JAPAN

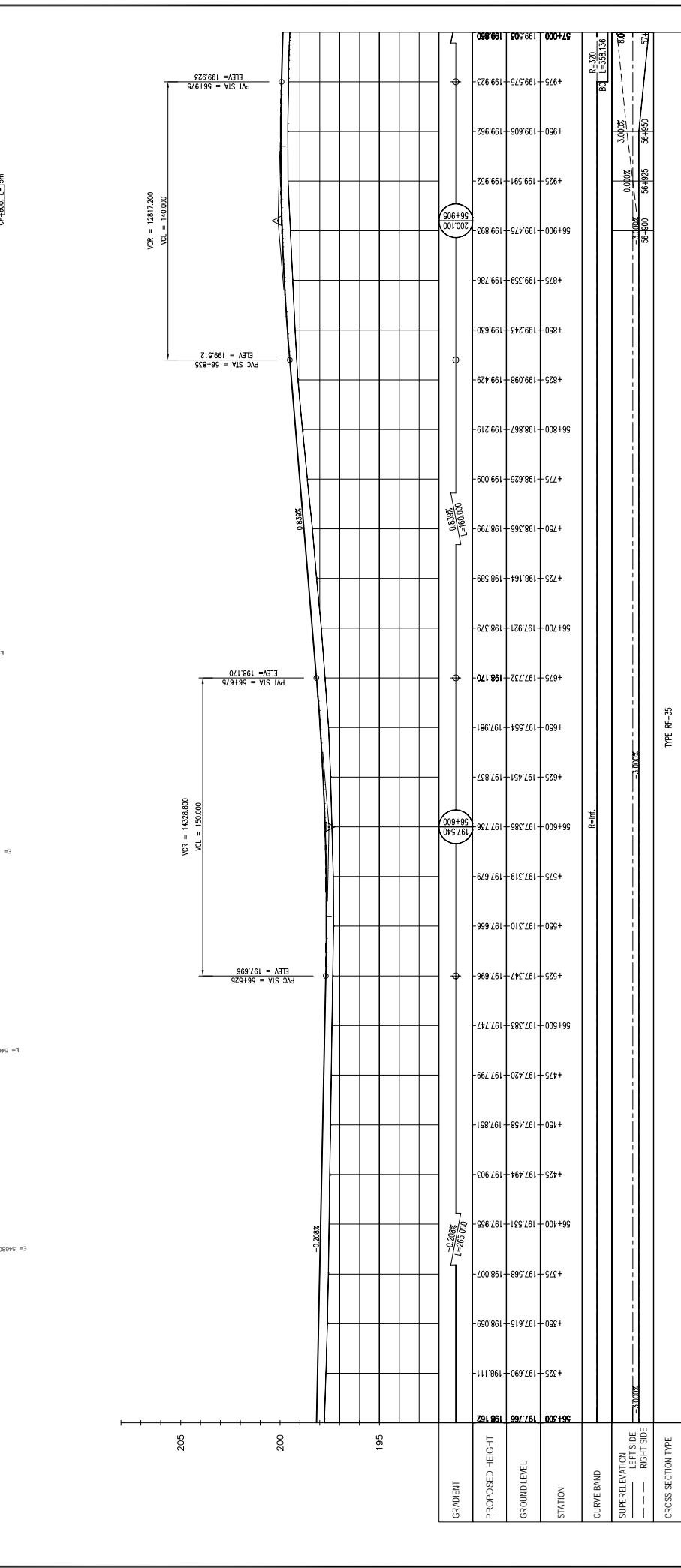
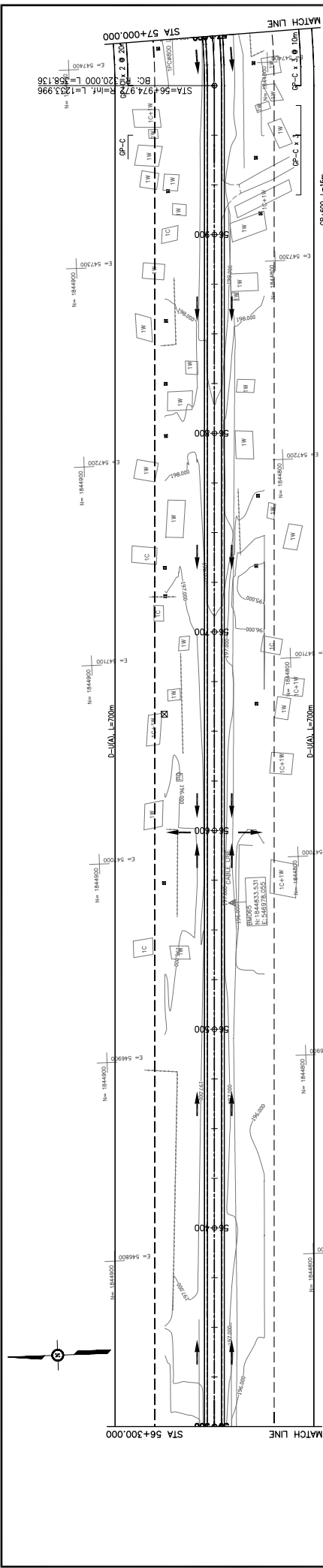
MINISTRY OF PUBLIC WORKS AND TRANSPORT
LAO PEOPLE'S DEMOCRATIC REPUBLIC

THE PROJECT FOR IMPROVEMENT OF NATIONAL ROAD No.9
AS EAST-WEST ECONOMIC CORRIDOR IN LAO PDR

PLAN & PROFILE
SECTION 1: STA 55+600 - 56+300

REV. No.	DATE	DESCRIPTION

SCALE: H=1:2,000
 V=1:200
 DRAWING No.: **C-140**



TYPE: Rf-35

REV. No.	DATE	DESCRIPTION
1		
2		
3		
4		
5		

SCALE: H=1:2,000
V=1:200

DRAWING No. C-141

THE PROJECT FOR IMPROVEMENT OF NATIONAL ROAD No.9
AS EAST-WEST ECONOMIC CORRIDOR IN LAO PDR

MINISTRY OF PUBLIC WORKS AND TRANSPORT
LAO PEOPLE'S DEMOCRATIC REPUBLIC

JAPAN INTERNATIONAL COOPERATION AGENCY
THE CONSORTIUM OF
ORIENTAL CONSULTANTS CO., LTD.
INTERNATIONAL DEVELOPMENT CENTER OF JAPAN

PLAN & PROFILE
SECTION 1: STA 56+300 - 57+000

SIGNATURE

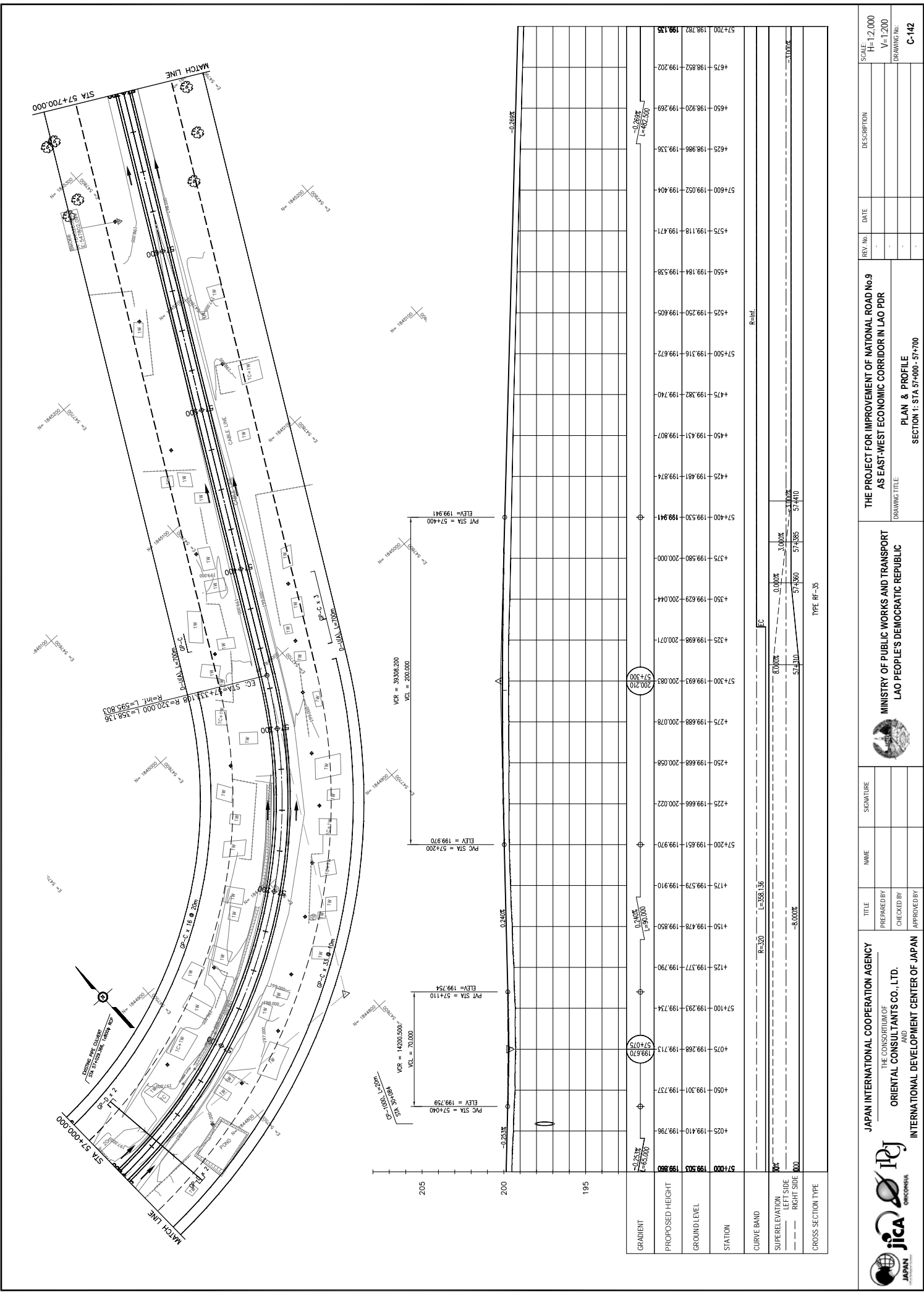
NAME

TITLE

PREPARED BY

CHECKED BY

APPROVED BY



STATION	PROPOSED HEIGHT	GROUND LEVEL
57+000	199.503	199.503
57+025	199.410	199.796
57+050	199.301	199.737
57+075	199.268	199.713
57+100	199.293	199.734
57+125	199.377	199.790
57+150	199.478	199.850
57+175	199.579	199.910
57+200	199.651	199.970
57+225	199.666	200.022
57+250	199.668	200.058
57+275	199.688	200.078
57+300	199.693	200.083
57+325	199.698	200.071
57+350	199.629	200.044
57+375	199.580	200.000
57+400	199.530	199.941
57+425	199.481	199.874
57+450	199.431	199.807
57+475	199.382	199.740
57+500	199.316	199.672
57+525	199.250	199.605
57+550	199.184	199.538
57+575	199.118	199.471
57+600	199.052	199.404
57+625	199.986	199.336
57+650	199.920	199.269
57+675	198.852	199.202
57+700	198.782	199.135

MINISTRY OF PUBLIC WORKS AND TRANSPORT
LAO PEOPLE'S DEMOCRATIC REPUBLIC

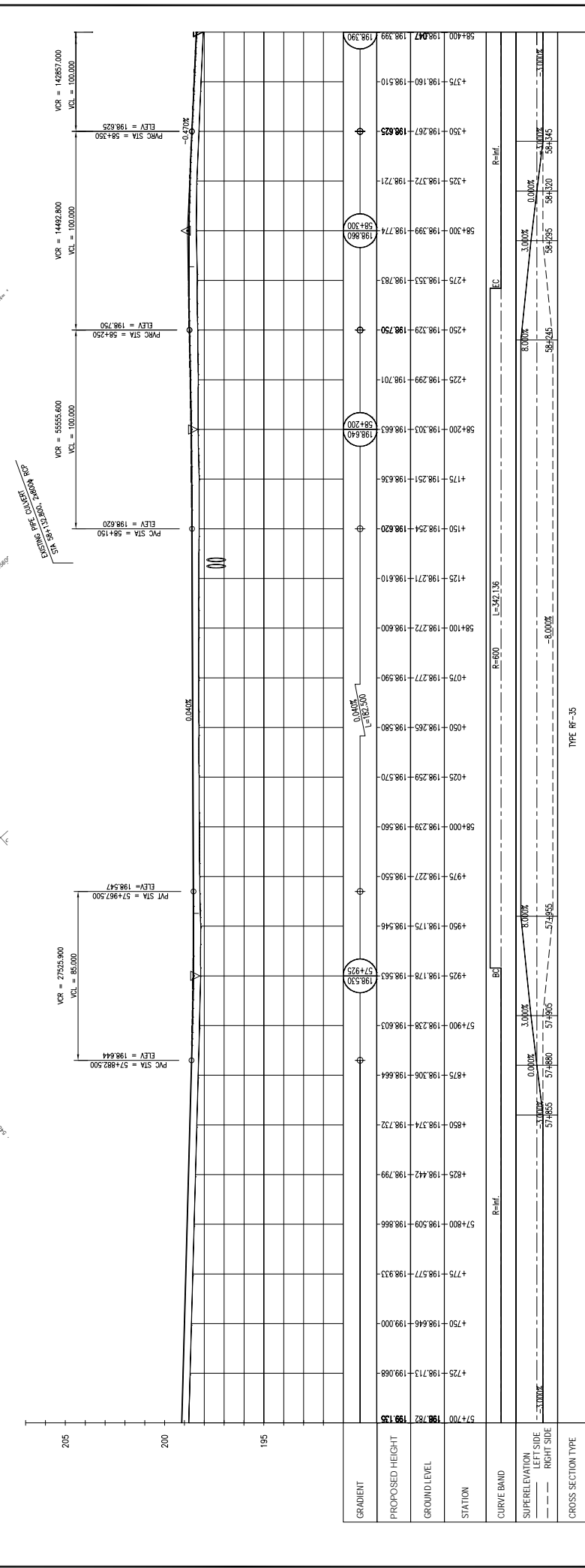
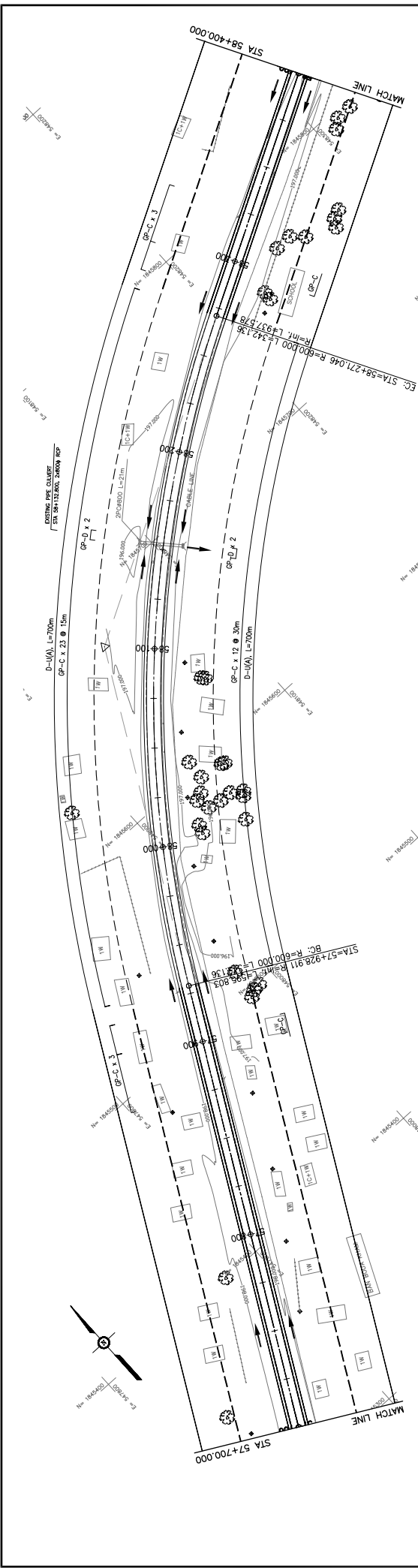
JAPAN INTERNATIONAL COOPERATION AGENCY
THE CONSORTIUM OF
ORIENTAL CONSULTANTS CO., LTD.
INTERNATIONAL DEVELOPMENT CENTER OF JAPAN

THE PROJECT FOR IMPROVEMENT OF NATIONAL ROAD No.9
AS EAST-WEST ECONOMIC CORRIDOR IN LAO PDR

PLAN & PROFILE
SECTION 1: STA 57+000 - 57+700

REV. No.	DATE	DESCRIPTION

SCALE: H=1:2,000
V=1:200
DRAWING No. C-142



GRADIENT	STATION	PROPOSED HEIGHT	GROUND LEVEL
0.000%	57+700	198.782	199.135
0.000%	57+750	198.646	199.000
0.000%	57+800	198.442	198.799
0.000%	57+850	198.374	198.732
0.000%	57+900	198.238	198.603
0.000%	57+925	198.178	198.563
0.000%	57+950	198.175	198.546
0.000%	57+975	198.227	198.550
0.000%	58+000	198.239	198.560
0.000%	58+025	198.259	198.570
0.000%	58+050	198.265	198.580
0.000%	58+075	198.277	198.590
0.000%	58+100	198.272	198.600
0.000%	58+125	198.271	198.610
0.000%	58+150	198.254	198.620
0.000%	58+175	198.251	198.636
0.000%	58+200	198.303	198.683
0.000%	58+225	198.299	198.701
0.000%	58+250	198.329	198.750
0.000%	58+275	198.353	198.783
0.000%	58+300	198.399	198.774
0.000%	58+325	198.372	198.721
0.000%	58+350	198.267	198.625
0.000%	58+375	198.160	198.510
0.000%	58+400	198.047	198.390

PLAN & PROFILE
SECTION 1: STA 57+700 - 58+400

TYPE: RP-35

REV. No.	DATE	DESCRIPTION

JAPAN INTERNATIONAL COOPERATION AGENCY
 THE CONSORTIUM OF
 ORIENTAL CONSULTANTS CO., LTD.
 INTERNATIONAL DEVELOPMENT CENTER OF JAPAN

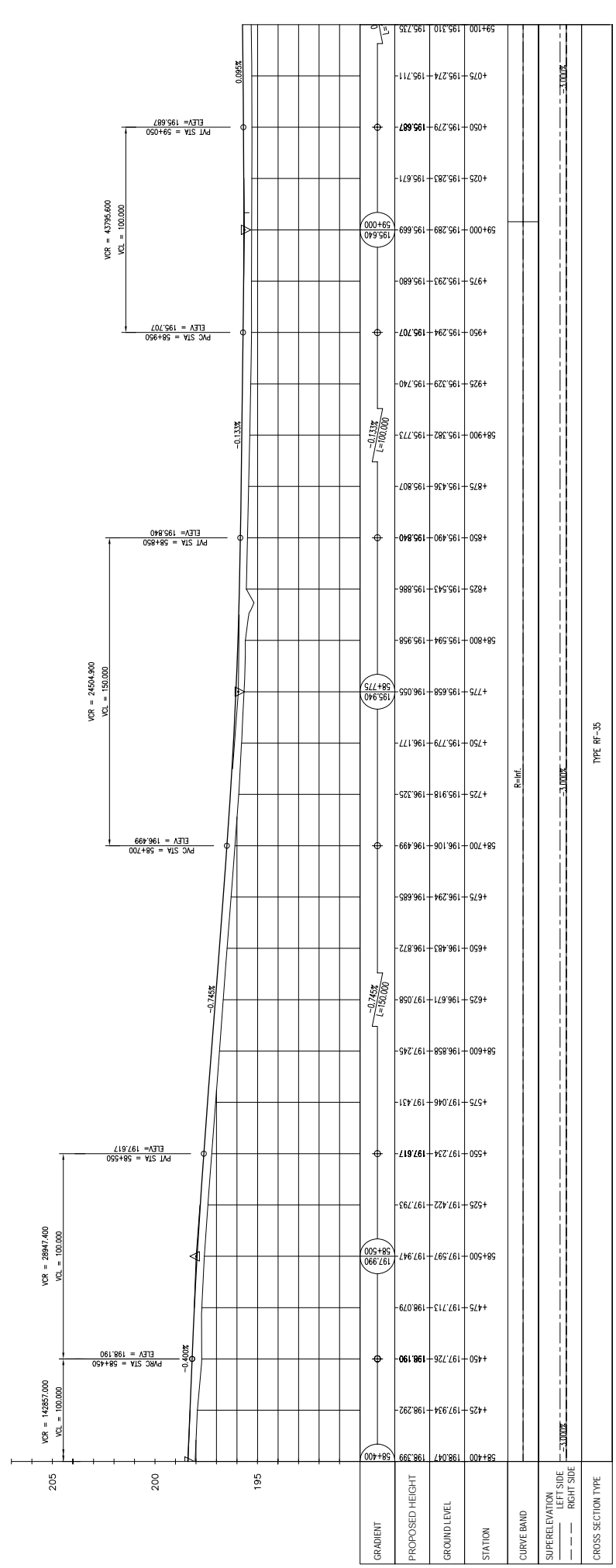
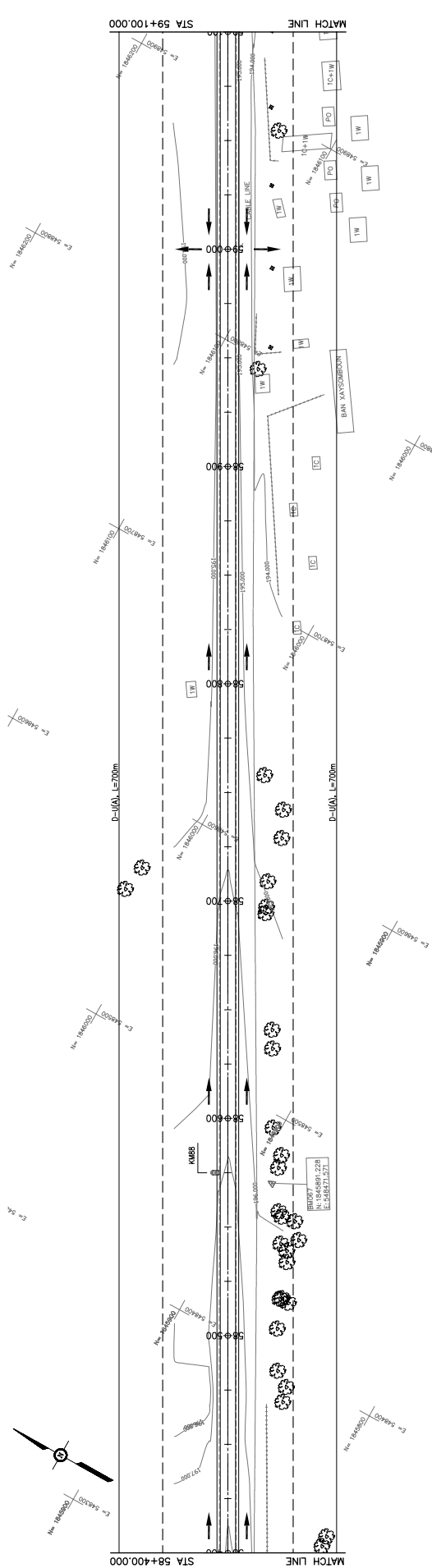
MINISTRY OF PUBLIC WORKS AND TRANSPORT
 LAO PEOPLE'S DEMOCRATIC REPUBLIC

THE PROJECT FOR IMPROVEMENT OF NATIONAL ROAD No.9
 AS EAST-WEST ECONOMIC CORRIDOR IN LAO PDR

DRAWING TITLE: PLAN & PROFILE
DRAWING No.: SECTION 1: STA 57+700 - 58+400

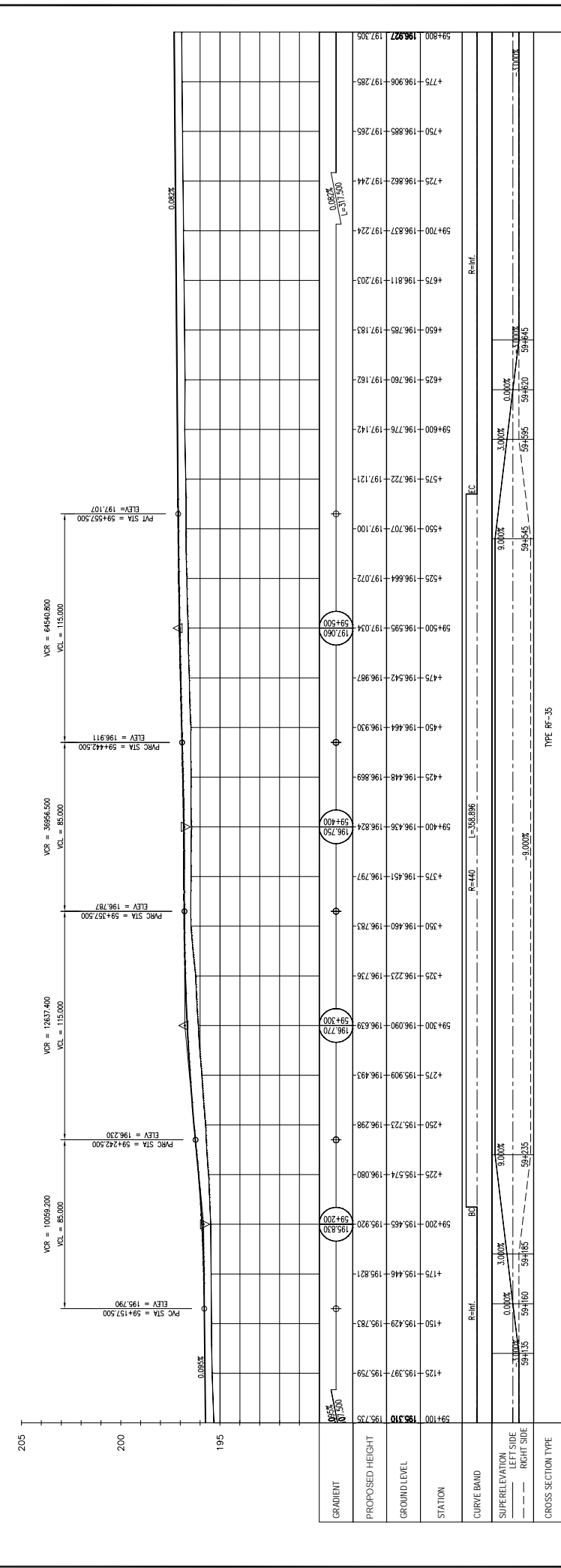
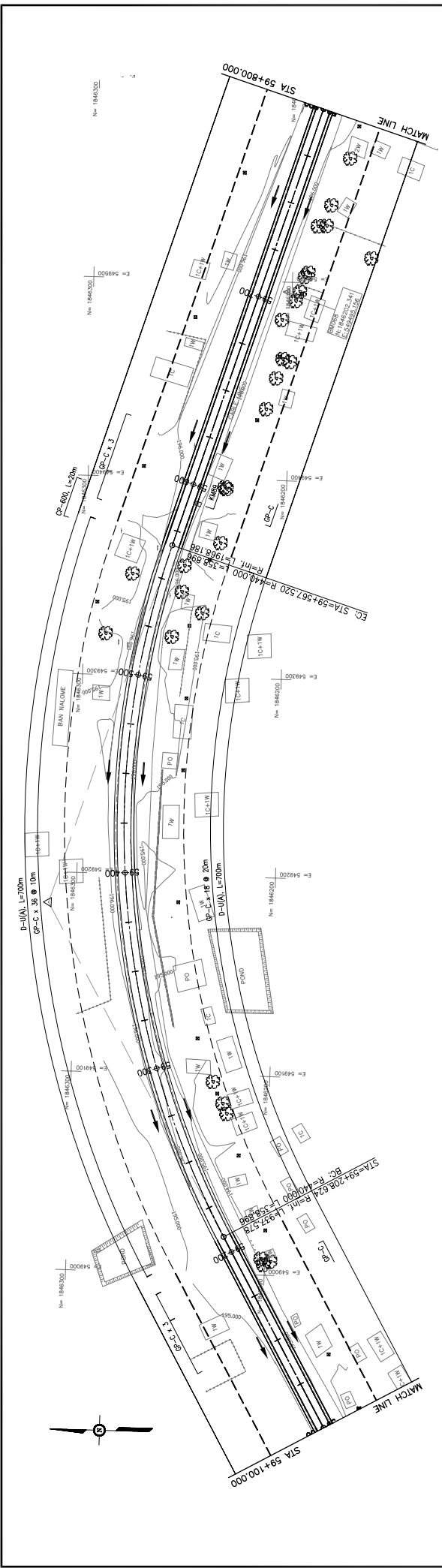
SCALE:	H=1:2,000	V=1:200

DRAWING No.: C-143



TYPE RF-35

		JAPAN INTERNATIONAL COOPERATION AGENCY THE CONSORTIUM OF ORIENTAL CONSULTANTS CO., LTD. INTERNATIONAL DEVELOPMENT CENTER OF JAPAN		MINISTRY OF PUBLIC WORKS AND TRANSPORT LAO PEOPLE'S DEMOCRATIC REPUBLIC		THE PROJECT FOR IMPROVEMENT OF NATIONAL ROAD No.9 AS EAST-WEST ECONOMIC CORRIDOR IN LAO PDR		REV No. . DATE .	DESCRIPTION . DATE .	SCALE: H=1:2,000 V=1:200
PREPARED BY CHECKED BY APPROVED BY		TITLE PREPARED BY CHECKED BY APPROVED BY		NAME SIGNATURE		DRAWING TITLE PLAN & PROFILE SECTION 1: STA 58+400 - 59+100		DRAWING No. . DATE .		C-144



STATION	PROPOSED HEIGHT	GROUND LEVEL	GRADIENT
59+100	195.310	195.735	0.00%
4+25	195.297	195.759	0.00%
4+50	195.429	195.783	0.00%
4+75	195.446	195.821	0.00%
59+200	195.465	195.920	0.00%
4+25	195.574	196.080	0.00%
4+50	195.723	196.298	0.00%
4+75	195.909	196.493	0.00%
59+300	196.090	196.639	0.00%
4+25	196.223	196.736	0.00%
4+50	196.460	196.783	0.00%
4+75	196.451	196.797	0.00%
59+400	196.436	196.824	0.00%
4+25	196.448	196.869	0.00%
4+50	196.464	196.930	0.00%
4+75	196.542	196.967	0.00%
59+500	196.598	197.034	0.00%
4+25	196.664	197.072	0.00%
4+50	196.707	197.100	0.00%
4+75	196.722	197.121	0.00%
59+600	196.776	197.142	0.00%
4+25	196.760	197.162	0.00%
4+50	196.785	197.183	0.00%
4+75	196.811	197.203	0.00%
59+700	196.837	197.224	0.00%
4+25	196.862	197.244	0.00%
4+50	196.885	197.263	0.00%
4+75	196.906	197.285	0.00%
59+800	196.927	197.305	0.00%

JAPAN INTERNATIONAL COOPERATION AGENCY
 THE CONSORTIUM OF
ORIENTAL CONSULTANTS CO., LTD.
 INTERNATIONAL DEVELOPMENT CENTER OF JAPAN

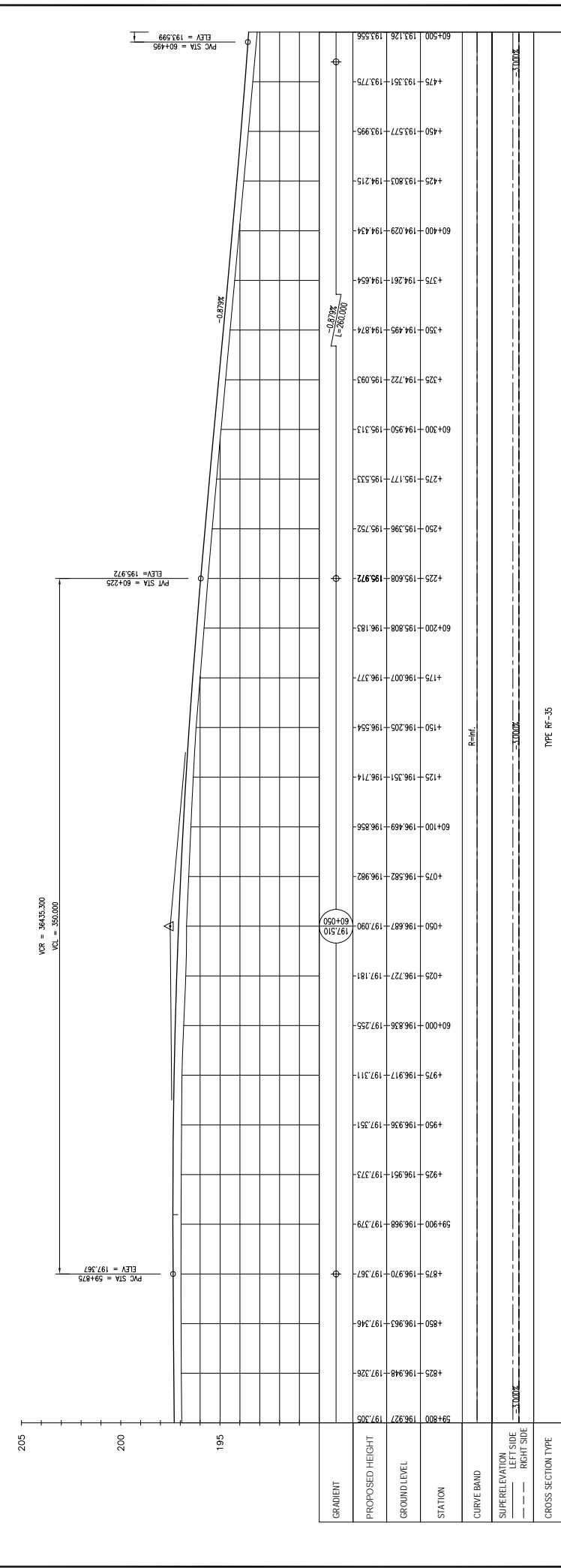
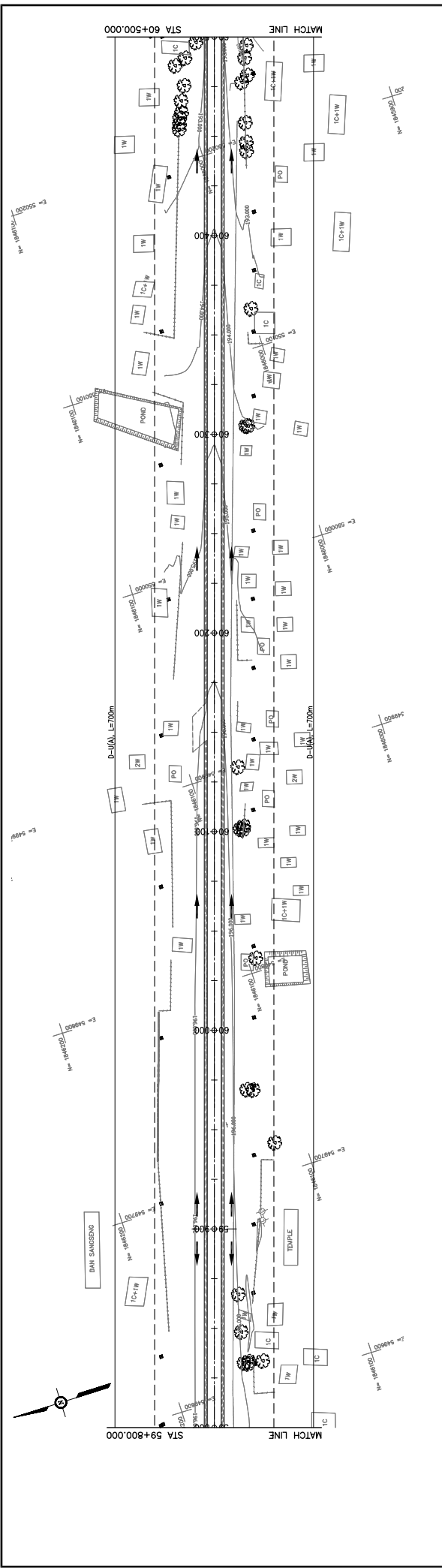
MINISTRY OF PUBLIC WORKS AND TRANSPORT
LAO PEOPLE'S DEMOCRATIC REPUBLIC

THE PROJECT FOR IMPROVEMENT OF NATIONAL ROAD No.9
AS EAST-WEST ECONOMIC CORRIDOR IN LAO PDR

PLAN & PROFILE
 SECTION 1: STA 59+100 - 59+800

REV. No.	DATE	DESCRIPTION

SCALE: H=1:2,000
 V=1:200
 DRAWING No.: **C-145**



STATION	PROPOSED HEIGHT	GROUND LEVEL
60+500	193.126	193.551
4+75	193.571	193.775
4+50	193.577	193.995
4+25	193.803	194.215
60+400	194.029	194.434
4+75	194.261	194.654
4+50	194.493	194.874
4+25	194.722	195.093
60+300	194.950	195.313
4+75	195.177	195.533
4+50	195.396	195.752
4+25	195.608	195.972
60+200	195.808	196.183
4+75	196.007	196.377
4+50	196.205	196.554
4+25	196.351	196.714
60+100	196.469	196.856
4+75	196.582	196.982
4+50	196.687	197.090
4+25	196.727	197.181
60+000	196.836	197.265
4+75	196.917	197.311
4+50	196.936	197.351
4+25	196.951	197.373
59+900	196.968	197.379
4+75	196.970	197.387
4+50	196.963	197.346
4+25	196.948	197.326
59+800	196.927	197.305

JAPAN INTERNATIONAL COOPERATION AGENCY
 THE CONSORTIUM OF
ORIENTAL CONSULTANTS CO., LTD.
INTERNATIONAL DEVELOPMENT CENTER OF JAPAN

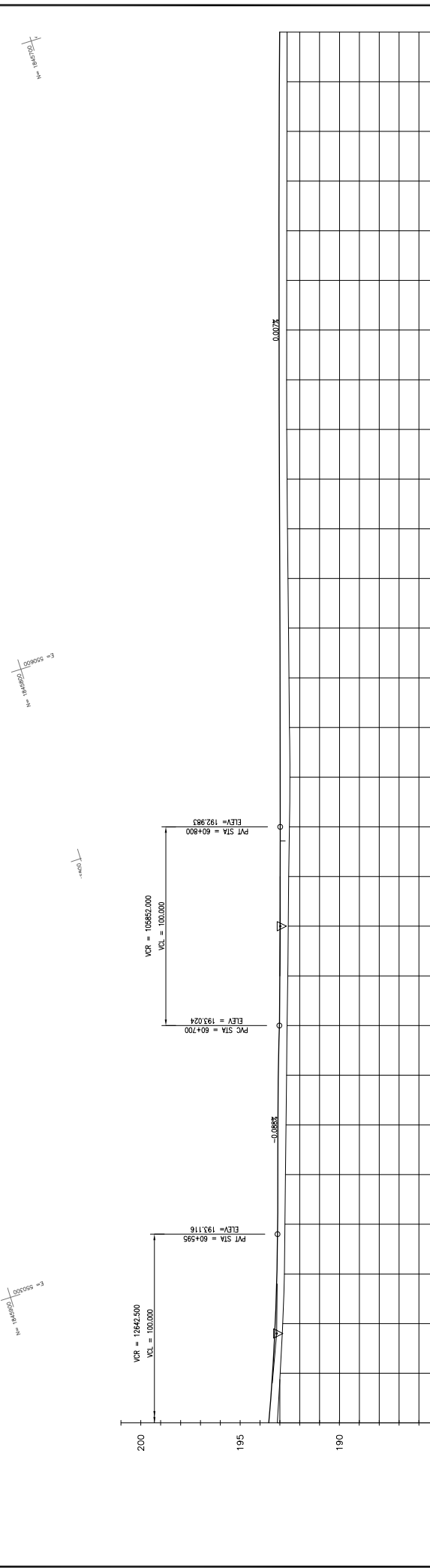
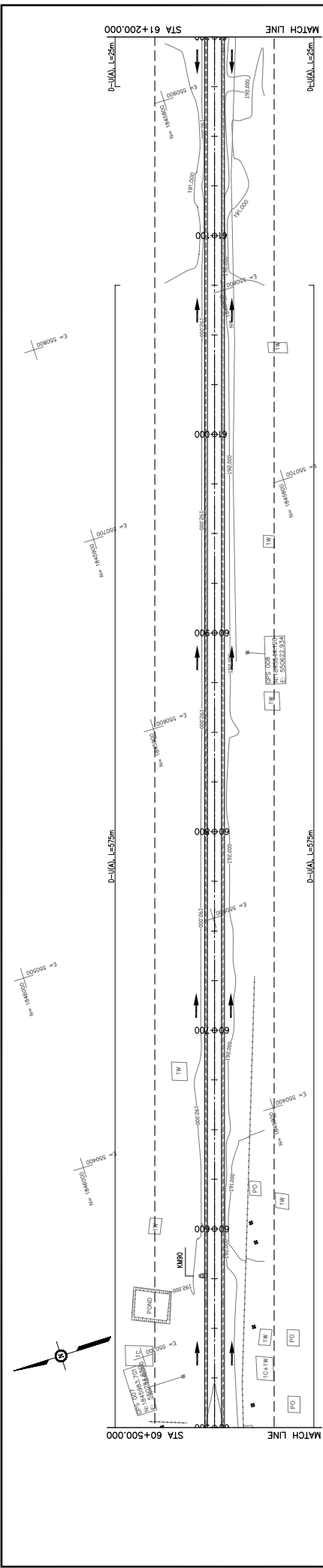
MINISTRY OF PUBLIC WORKS AND TRANSPORT
LAO PEOPLE'S DEMOCRATIC REPUBLIC

THE PROJECT FOR IMPROVEMENT OF NATIONAL ROAD No.9
AS EAST-WEST ECONOMIC CORRIDOR IN LAO PDR

PLAN & PROFILE
SECTION 1: STA 59+800 - 60+500

REV. No.	DATE	DESCRIPTION

SCALE: H=1:2,000
 V=1:200
 DRAWING No. **C-146**



STATION	GROUND LEVEL	PROPOSED HEIGHT	GRADIENT
60+500	193.556	193.126	193.556
4+25	192.982	193.371	193.160
4+50	192.854	193.236	193.545
4+75	192.718	193.090	193.117
4+50	192.854	193.236	193.545
4+25	192.982	193.371	193.160
60+600	192.747	193.112	193.149
4+50	192.854	193.236	193.545
4+25	192.982	193.371	193.160
60+700	192.634	193.024	192.990
4+25	192.607	193.005	192.992
4+75	192.579	192.992	192.992
4+50	192.579	192.992	192.992
4+75	192.551	192.985	192.985
60+800	192.523	192.983	192.983
4+25	192.495	192.985	192.985
4+50	192.519	192.987	192.987
4+875	192.543	192.988	192.988
60+900	192.566	192.990	192.990
4+25	192.591	192.992	192.992
4+50	192.615	192.993	192.993
4+75	192.639	192.995	192.995
61+000	192.663	192.997	192.997
4+25	192.664	192.998	192.998
4+50	192.660	193.000	193.000
4+75	192.656	193.002	193.002
61+100	192.652	193.003	193.003
4+25	192.648	193.005	193.005
4+50	192.644	193.007	193.007
4+75	192.640	193.008	193.008
61+200	192.637	193.010	193.010

TYPE SECTION TYPE

TYPE RF-35

MINISTRY OF PUBLIC WORKS AND TRANSPORT
LAO PEOPLE'S DEMOCRATIC REPUBLIC

JAPAN INTERNATIONAL COOPERATION AGENCY
THE CONSORTIUM OF
ORIENTAL CONSULTANTS CO., LTD.
INTERNATIONAL DEVELOPMENT CENTER OF JAPAN

THE PROJECT FOR IMPROVEMENT OF NATIONAL ROAD No.9
AS EAST-WEST ECONOMIC CORRIDOR IN LAO PDR

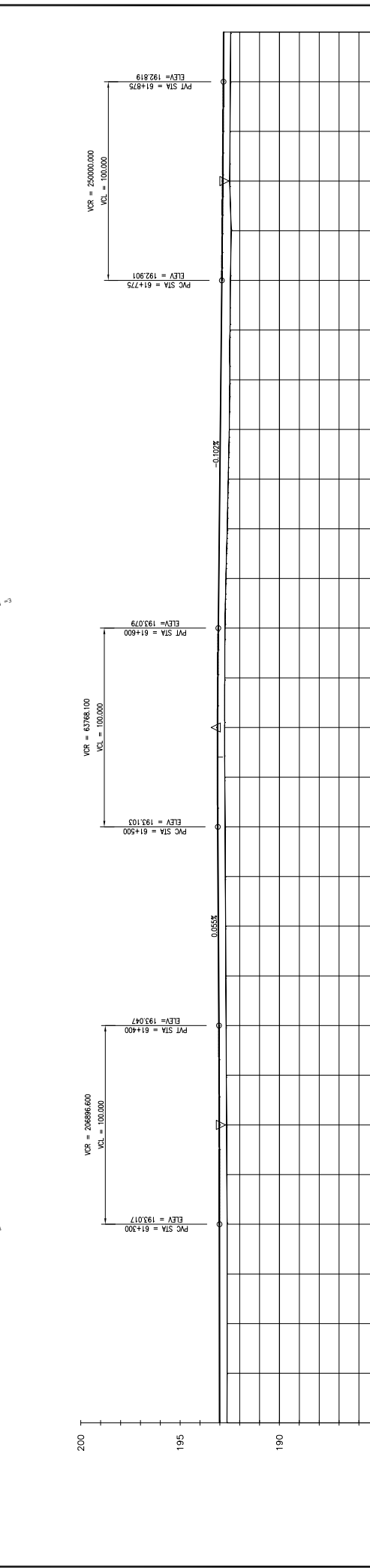
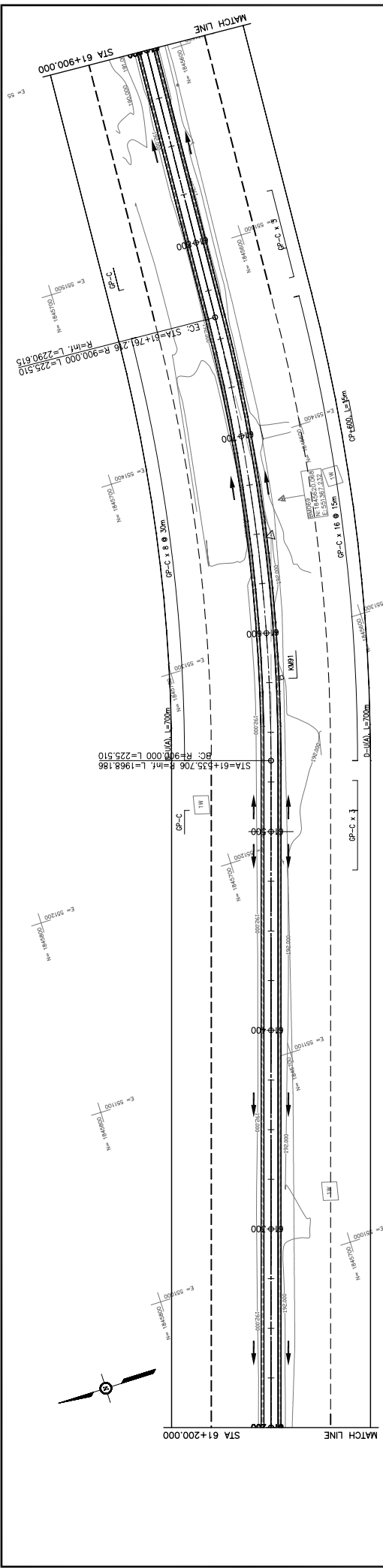
PLAN & PROFILE
SECTION 1: STA 60+500 - 61+200

REV. No.	DATE	DESCRIPTION

SCALE: H=1:2,000
V=1:200

DRAWING No. C-147

TITLE: NAME: SIGNATURE: PREPARED BY: CHECKED BY: APPROVED BY:



GRADIENT	PROPOSED HEIGHT	GROUND LEVEL	STATION	CURVE BAND	SUPERELEVATION LEFT SIDE RIGHT SIDE	CROSS SECTION TYPE
	192.637	193.010	61+200		0.000%	
	192.633	193.013	4+25		0.000%	
	192.629	193.013	4+50		0.000%	
	192.625	193.015	4+75		0.000%	
	192.632	193.017	61+300		0.000%	
	192.645	193.020	4+25		0.000%	
	192.656	193.026	4+50		0.000%	
	192.670	193.035	4+75		0.000%	
	192.682	193.047	61+400		0.000%	
	192.696	193.061	4+25		0.000%	
	192.708	193.075	4+50		0.000%	
	192.721	193.089	4+75		0.000%	
	192.734	193.103	61+500		0.000%	
	192.747	193.111	4+25		0.000%	
	192.756	193.110	4+50		0.000%	
	192.751	193.100	4+75		0.000%	
	192.736	193.079	61+600		0.000%	
	192.622	193.028	4+50		0.000%	
	192.627	193.028	4+75		0.000%	
	192.494	192.952	4+25		0.000%	
	192.498	192.926	4+50		0.000%	
	192.465	192.901	4+75		0.000%	
	192.428	192.877	61+800		0.000%	
	192.498	192.855	4+25		0.000%	
	192.483	192.836	4+50		0.000%	
	192.468	192.819	4+75		0.000%	
	192.450	192.804	61+900		0.000%	

TYPE: RF-35

TITLE	NAME	SIGNATURE	DATE	DESCRIPTION	SCALE:
PREPARED BY					H=1:2,000
CHECKED BY					V=1:200
APPROVED BY					DRAWING NO.

DRAWING TITLE: **PLAN & PROFILE**
SECTION 1: STA 61+200 - 61+900

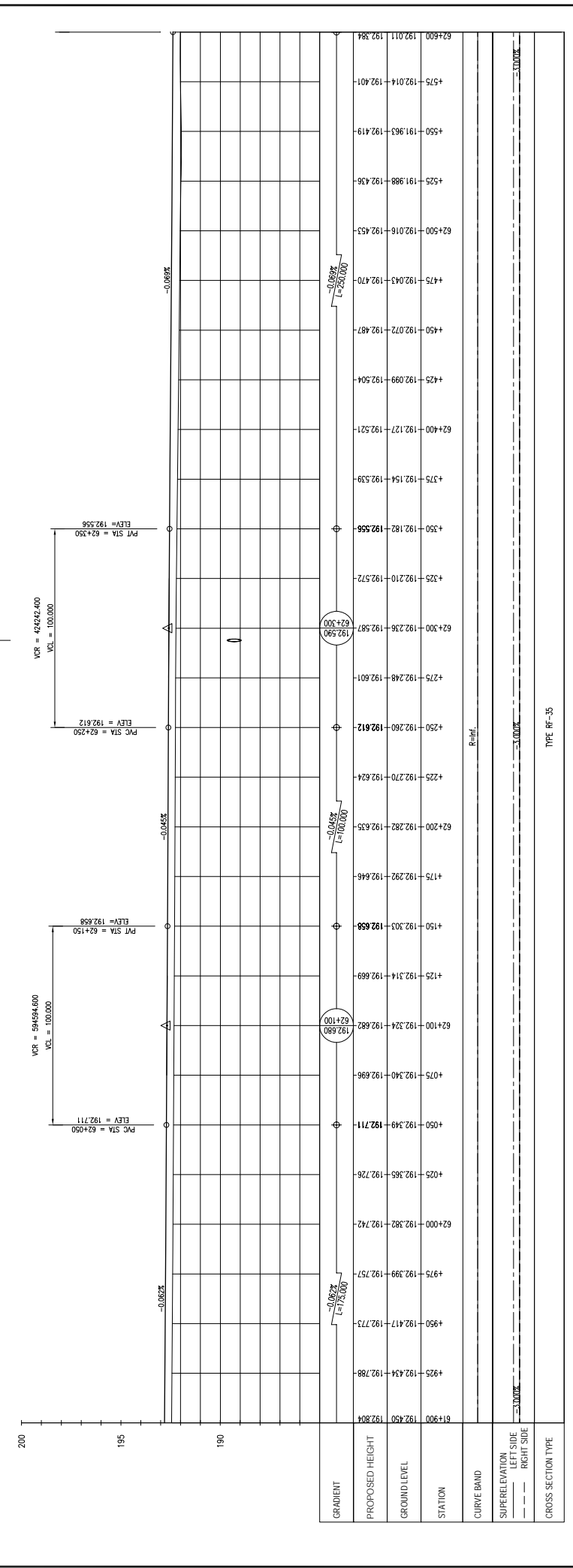
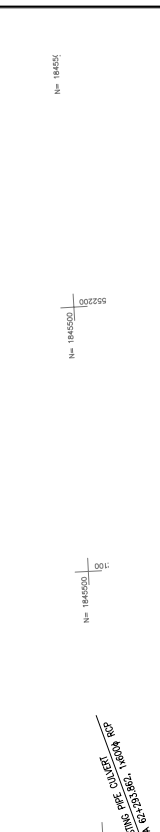
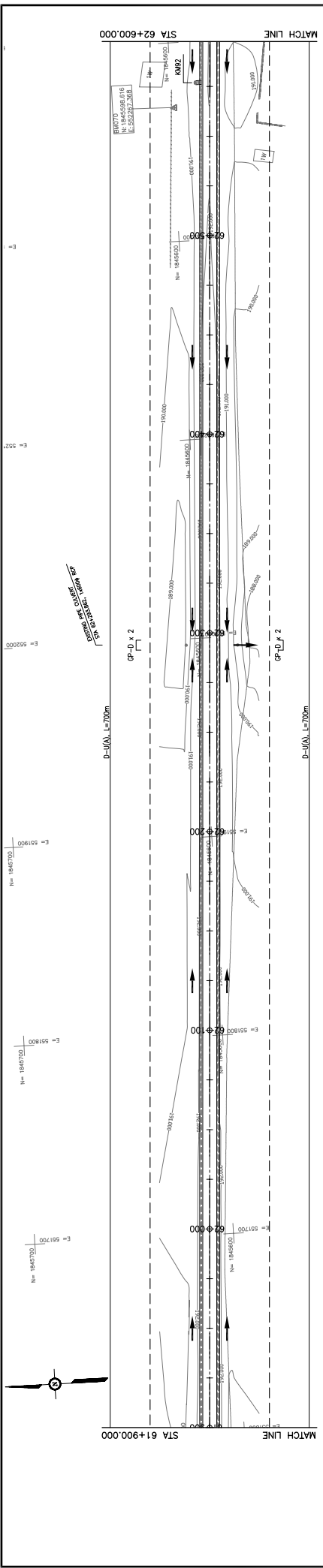
MINISTRY OF PUBLIC WORKS AND TRANSPORT
LAO PEOPLE'S DEMOCRATIC REPUBLIC

THE PROJECT FOR IMPROVEMENT OF NATIONAL ROAD No.9
AS EAST-WEST ECONOMIC CORRIDOR IN LAO PDR

JICA
JAPAN INTERNATIONAL COOPERATION AGENCY

THE CONSORTIUM OF
ORIENTAL CONSULTANTS CO., LTD.
INTERNATIONAL DEVELOPMENT CENTER OF JAPAN

C-148



JAPAN INTERNATIONAL COOPERATION AGENCY
 THE CONSORTIUM OF
ORIENTAL CONSULTANTS CO., LTD.
 INTERNATIONAL DEVELOPMENT CENTER OF JAPAN

MINISTRY OF PUBLIC WORKS AND TRANSPORT
LAO PEOPLE'S DEMOCRATIC REPUBLIC

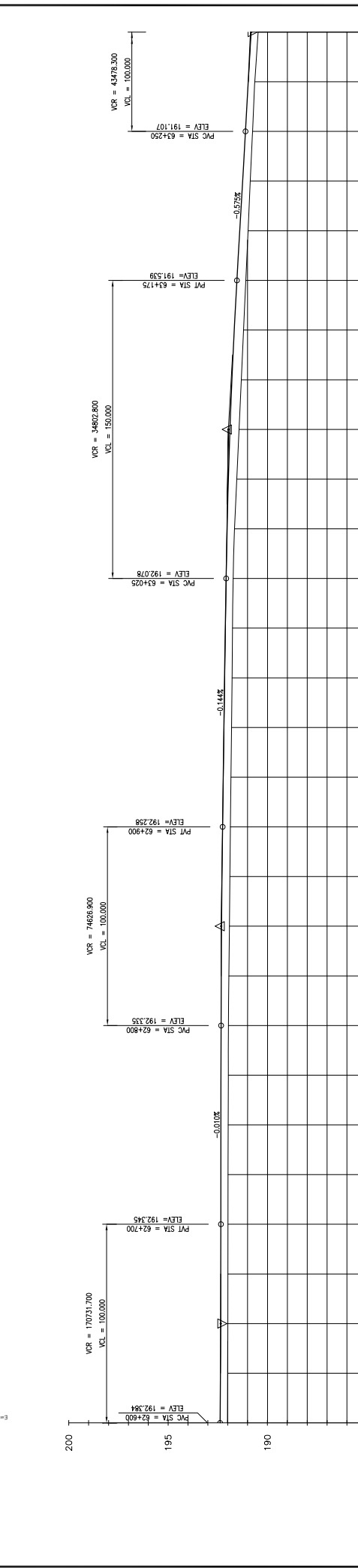
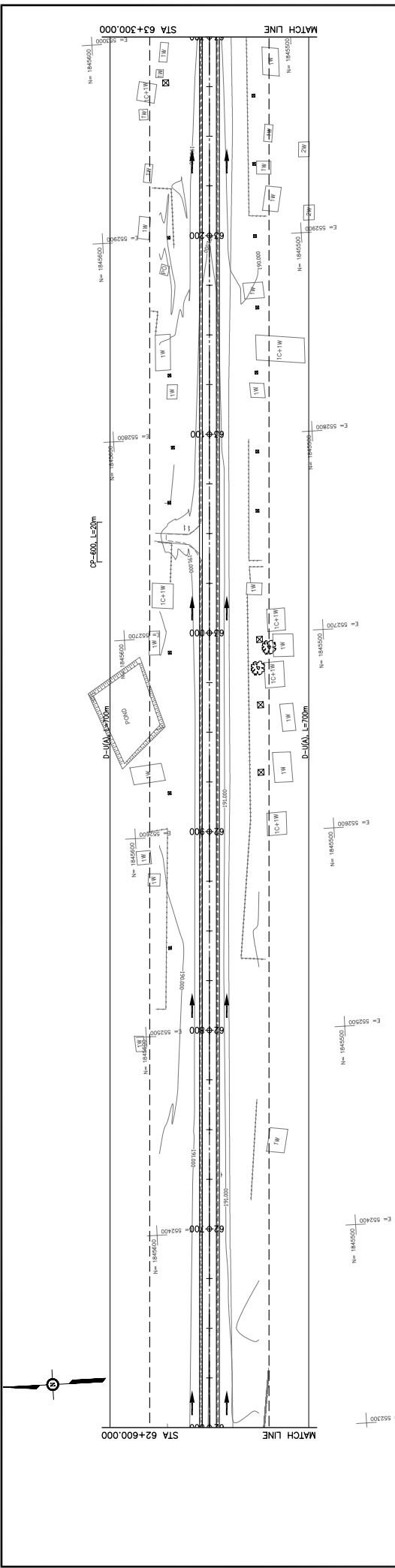
THE PROJECT FOR IMPROVEMENT OF NATIONAL ROAD No.9
AS EAST-WEST ECONOMIC CORRIDOR IN LAO PDR

PLAN & PROFILE
SECTION 1: STA 61+900 - 62+600

SCALE: H=1:2,000
 V=1:200
 DRAWING NO.: C-149

REV. No.	DATE	DESCRIPTION

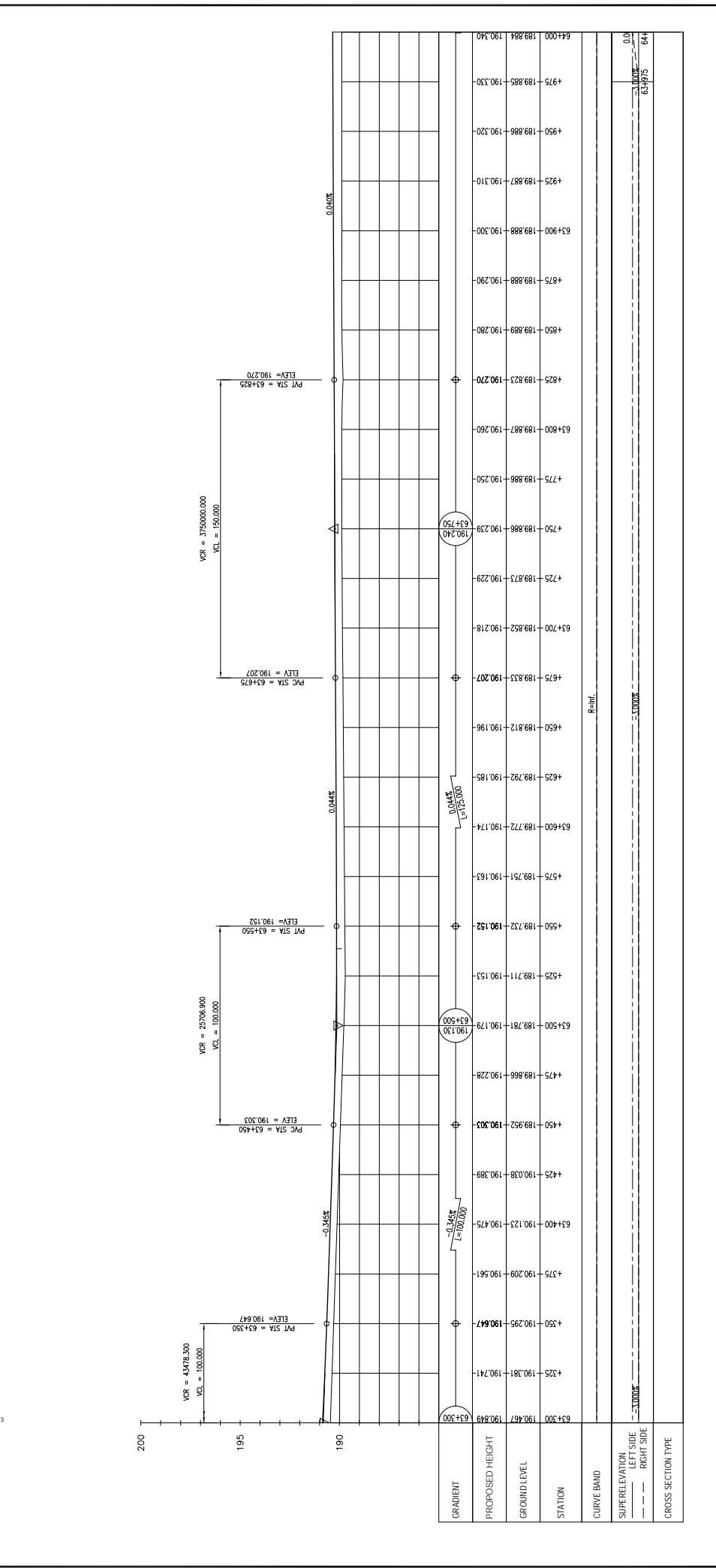
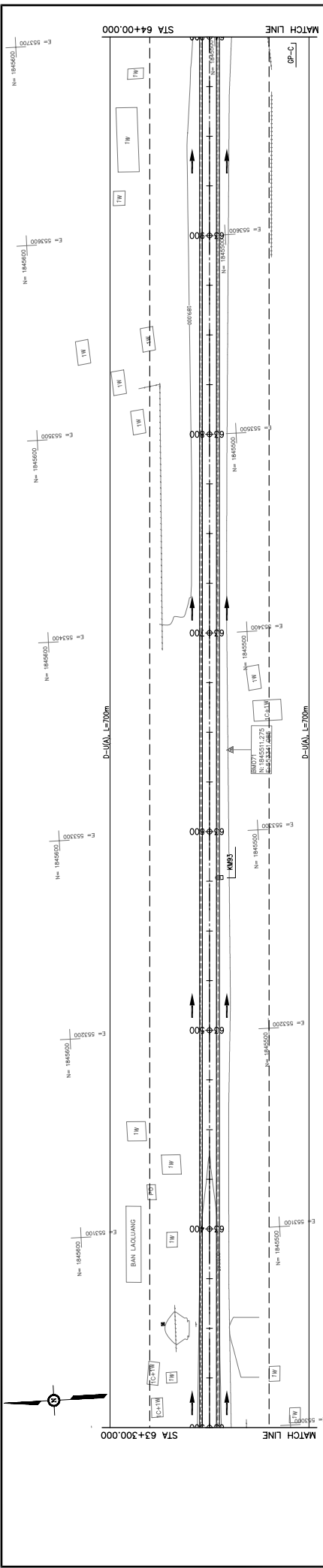
TITLE	NAME	SIGNATURE
PREPARED BY		
CHECKED BY		
APPROVED BY		



STATION	PROPOSED HEIGHT	GROUND LEVEL	GRADIENT
62+600	192.011	192.384	
62+700	191.987	192.345	
62+800	191.966	192.335	
62+900	191.863	192.258	
63+000	191.760	192.114	
63+100	191.657	192.033	
63+200	191.552	191.951	
63+300	191.447	191.869	
62+550	192.357	192.357	
62+650	192.330	192.313	
62+750	192.340	192.340	
62+850	192.328	192.328	
62+950	192.222	192.222	
63+050	192.078	192.078	
63+150	191.970	191.970	
63+250	191.865	191.865	
63+300	191.752	191.752	
63+300	190.639	190.971	
63+300	190.467	190.849	

TYPE: RF-35

JAPAN INTERNATIONAL COOPERATION AGENCY THE CONSORTIUM OF ORIENTAL CONSULTANTS CO., LTD.		INTERNATIONAL DEVELOPMENT CENTER OF JAPAN	
TITLE	NAME	SIGNATURE	
PREPARED BY			
CHECKED BY			
APPROVED BY			
THE PROJECT FOR IMPROVEMENT OF NATIONAL ROAD No.9 AS EAST-WEST ECONOMIC CORRIDOR IN LAO PDR			
MINISTRY OF PUBLIC WORKS AND TRANSPORT LAO PEOPLE'S DEMOCRATIC REPUBLIC			
DRAWING TITLE PLAN & PROFILE SECTION 1: STA 62+600 - 63+300			
REV. No.	DATE	DESCRIPTION	SCALE:
1			H=1:2,000 V=1:200
2			DRAWING No. C-150



REV. No.	DATE	DESCRIPTION

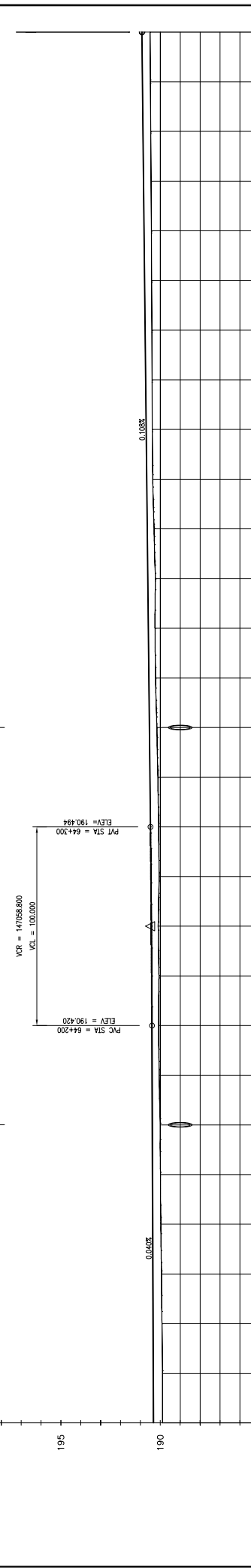
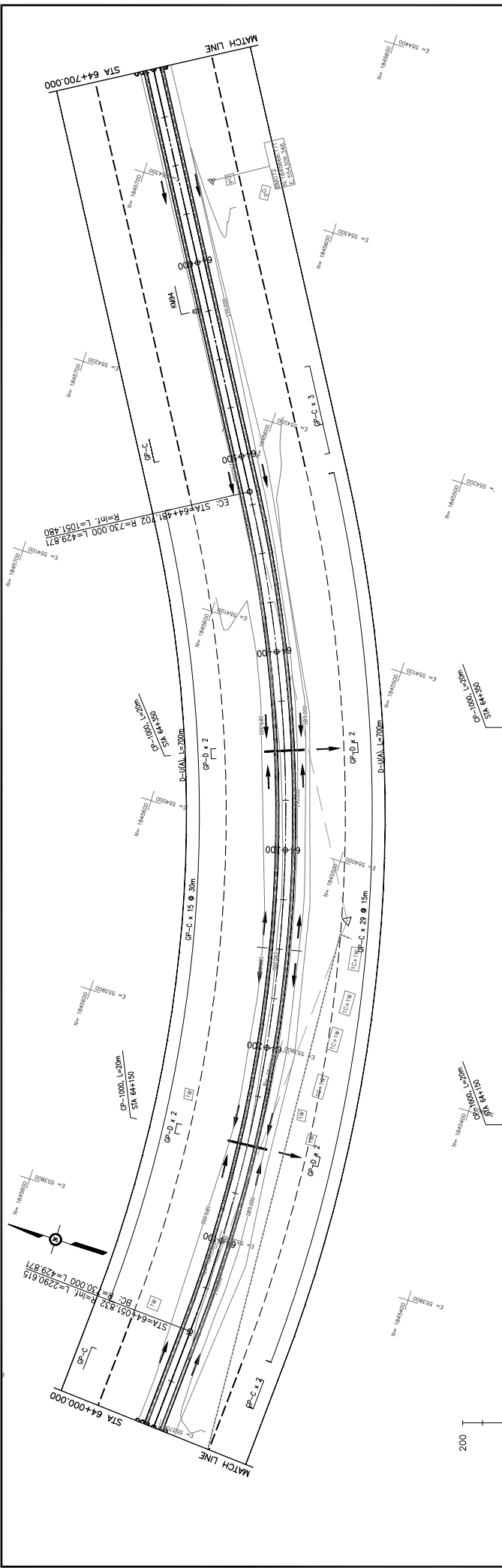
SCALE:	H=1:2,000
	V=1:200
DRAWING No.:	C-151

THE PROJECT FOR IMPROVEMENT OF NATIONAL ROAD No.9 AS EAST-WEST ECONOMIC CORRIDOR IN LAO PDR	
DRAWING TITLE	
PLAN & PROFILE	
SECTION 1: STA 63+300 - 64+000	

THE PROJECT FOR IMPROVEMENT OF NATIONAL ROAD No.9 AS EAST-WEST ECONOMIC CORRIDOR IN LAO PDR	
DRAWING TITLE PLAN & PROFILE SECTION 1: STA 63+300 - 64+000	

TITLE	NAME	SIGNATURE
PREPARED BY		
CHECKED BY		
APPROVED BY		

JAPAN INTERNATIONAL COOPERATION AGENCY THE CONSORTIUM OF ORIENTAL CONSULTANTS CO., LTD. INTERNATIONAL DEVELOPMENT CENTER OF JAPAN	



STATION	GROUND LEVEL	PROPOSED HEIGHT	GRADIENT
64+000	189.884	190.540	0.040% L=315.000
64+025	189.883	190.550	
64+050	189.914	190.560	
64+075	189.934	190.570	
64+100	189.970	190.580	
64+125	189.990	190.590	
64+150	189.997	190.400	
64+175	190.054	190.410	
64+200	190.084	190.420	
64+225	190.067	190.430	
64+250	190.104	190.448	0.108% L=400.000
64+275	190.054	190.469	
64+300	190.081	190.494	
64+325	190.118	190.521	
64+350	190.169	190.548	
64+375	190.237	190.575	
64+400	190.263	190.602	
64+425	190.245	190.629	
64+450	190.311	190.656	
64+475	190.379	190.683	
64+500	190.401	190.710	
64+525	190.413	190.737	
64+550	190.424	190.764	
64+575	190.435	190.791	
64+600	190.446	190.818	
64+625	190.459	190.845	
64+650	190.477	190.872	
64+675	190.496	190.899	
64+700	190.515	190.926	

MINISTRY OF PUBLIC WORKS AND TRANSPORT
LAO PEOPLE'S DEMOCRATIC REPUBLIC

THE PROJECT FOR IMPROVEMENT OF NATIONAL ROAD No.9
AS EAST-WEST ECONOMIC CORRIDOR IN LAO PDR

DRAWING TITLE: **PLAN & PROFILE**
SECTION 1: STA 64+000 - 64+700

SCALE: H=1:2,000 V=1:200	DATE	DESCRIPTION
REV. No.	DATE	DESCRIPTION

DRAWING NO. **C-152**

JAPAN INTERNATIONAL COOPERATION AGENCY

THE CONSORTIUM OF
ORIENTAL CONSULTANTS CO., LTD.

INTERNATIONAL DEVELOPMENT CENTER OF JAPAN

SIGNATURE

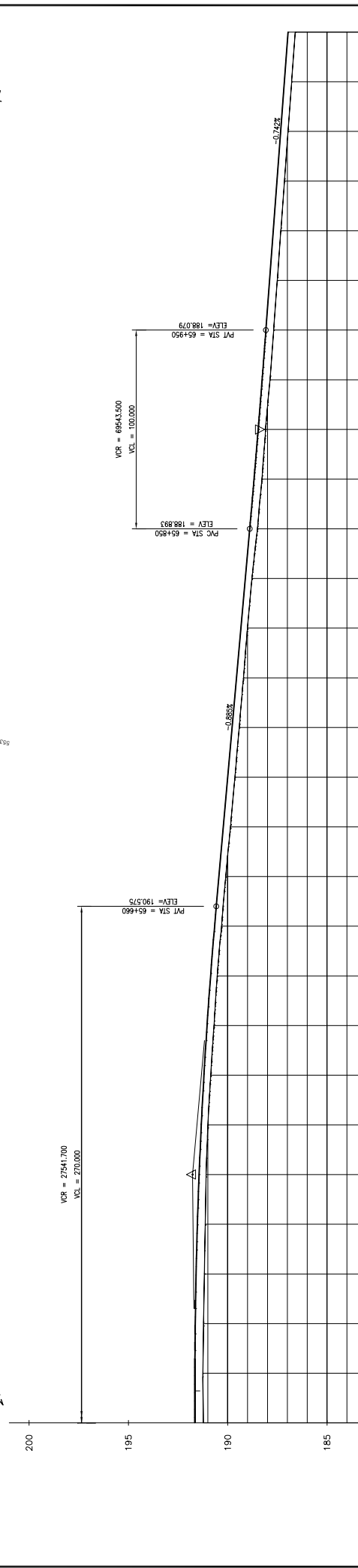
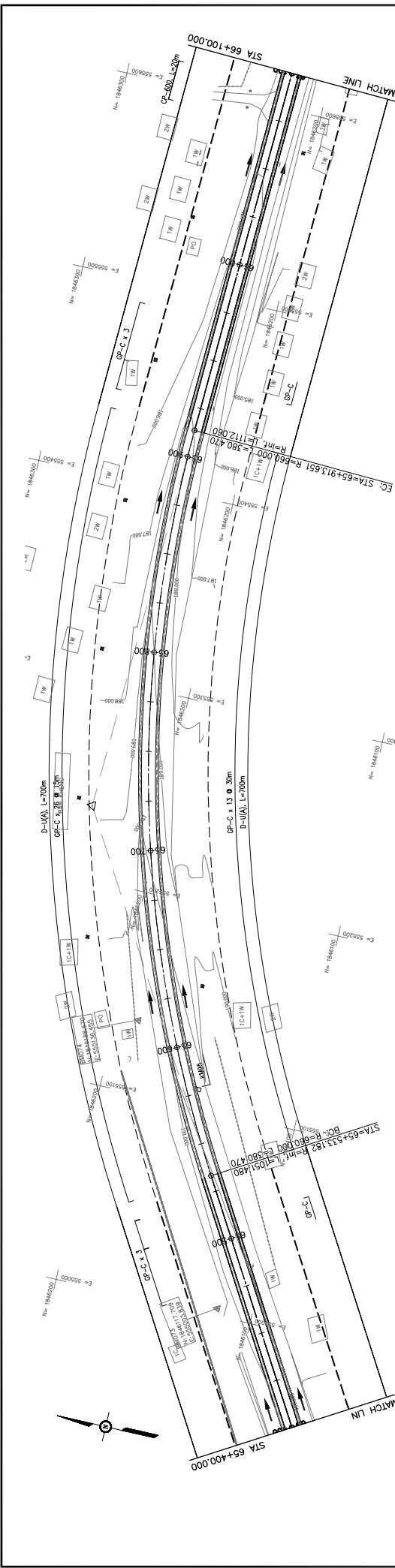
NAME

TITLE

PREPARED BY

CHECKED BY

APPROVED BY



GRADIENT	PROPOSED HEIGHT	GROUND LEVEL	STATION	CURVE BAND	SUPERELEVATION LEFT SIDE	SUPERELEVATION RIGHT SIDE	CROSS SECTION TYPE
	191.235	191.549	65+400	BC	0.000%	0.000%	BC
	191.088	191.439	65+525	BC	0.000%	0.000%	BC
	191.729	191.527	65+500	BC	0.000%	0.000%	BC
	191.172	191.591	65+475	BC	0.000%	0.000%	BC
	191.213	191.633	65+450	BC	0.000%	0.000%	BC
	191.246	191.653	65+425	BC	0.000%	0.000%	BC
	191.246	191.653	65+400	BC	0.000%	0.000%	BC
	190.849	191.196	65+475	BC	0.000%	0.000%	BC
	190.849	191.196	65+500	BC	0.000%	0.000%	BC
	190.523	190.682	65+600	BC	0.000%	0.000%	BC
	190.523	190.682	65+625	BC	0.000%	0.000%	BC
	190.307	190.662	65+500	BC	0.000%	0.000%	BC
	190.093	190.442	65+700	BC	0.000%	0.000%	BC
	189.855	190.221	65+700	BC	0.000%	0.000%	BC
	189.631	189.999	65+725	BC	0.000%	0.000%	BC
	189.413	189.778	65+750	BC	0.000%	0.000%	BC
	189.202	189.557	65+775	BC	0.000%	0.000%	BC
	189.002	189.335	65+800	BC	0.000%	0.000%	BC
	188.776	189.114	65+825	BC	0.000%	0.000%	BC
	188.501	188.893	65+850	BC	0.000%	0.000%	BC
	188.275	188.676	65+875	BC	0.000%	0.000%	BC
	188.091	188.468	65+900	BC	0.000%	0.000%	BC
	187.870	188.269	65+925	BC	0.000%	0.000%	BC
	187.686	188.079	65+950	BC	0.000%	0.000%	BC
	187.504	187.894	65+975	BC	0.000%	0.000%	BC
	187.323	187.708	66+000	BC	0.000%	0.000%	BC
	187.142	187.523	66+025	BC	0.000%	0.000%	BC
	186.961	187.338	66+050	BC	0.000%	0.000%	BC
	186.780	187.152	66+075	BC	0.000%	0.000%	BC
	186.599	186.967	66+100	BC	0.000%	0.000%	BC

JAPAN INTERNATIONAL COOPERATION AGENCY
THE CONSORTIUM OF
ORIENTAL CONSULTANTS CO., LTD.
INTERNATIONAL DEVELOPMENT CENTER OF JAPAN

MINISTRY OF PUBLIC WORKS AND TRANSPORT
LAO PEOPLE'S DEMOCRATIC REPUBLIC

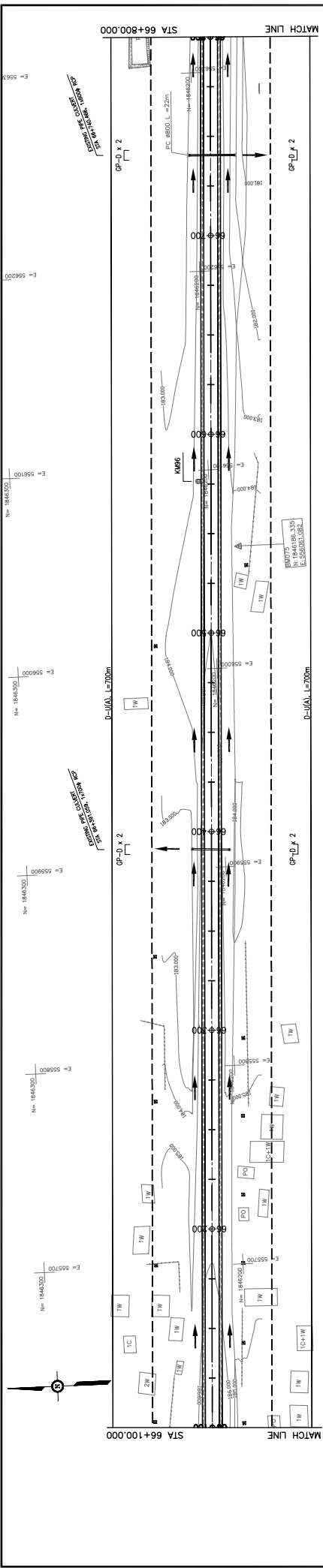
THE PROJECT FOR IMPROVEMENT OF NATIONAL ROAD No.9
AS EAST-WEST ECONOMIC CORRIDOR IN LAO PDR

DRAWING TITLE: **PLAN & PROFILE**
SECTION 1: STA 65+400 - 66+100

REV. No.	DATE	DESCRIPTION

SCALE: H=1:2,000
V=1:200

DRAWING No. **C-154**



STATION	PROPOSED HEIGHT	GROUND LEVEL	GRADIENT
66+100	186.599	186.967	
+125	186.418	186.782	
+150	186.237	186.596	
+175	186.056	186.421	
+200	185.873	186.267	
+225	185.691	186.134	186.040
+250	185.601	186.021	
+275	185.543	185.929	
+300	185.485	185.859	
+325	185.427	185.798	
+350	185.368	185.738	
+375	185.310	185.677	
+400	185.252	185.617	
+425	185.192	185.556	
+450	185.131	185.496	
+475	185.066	185.435	
+500	184.973	185.375	
+525	184.873	185.314	
+550	184.773	185.254	
+575	184.680	185.193	
+600	184.583	185.133	
+625	184.486	185.072	
+650	184.383	185.012	
+675	184.278	184.951	
+700	184.170	184.891	
+725	184.066	184.830	
+750	183.955	184.770	
+775	183.837	184.728	
+800	183.713	184.678	

PLAN & PROFILE
SECTION 1: STA 66+100 - 66+800

DATE	DESCRIPTION	SCALE:
REV No.		H=1:2,000
		V=1:200
		DRAWING No.
		C-155

MINISTRY OF PUBLIC WORKS AND TRANSPORT
LAO PEOPLE'S DEMOCRATIC REPUBLIC

JAPAN INTERNATIONAL COOPERATION AGENCY
THE CONSORTIUM OF
ORIENTAL CONSULTANTS CO., LTD.
INTERNATIONAL DEVELOPMENT CENTER OF JAPAN

TITLE	SIGNATURE
PREPARED BY	
CHECKED BY	
APPROVED BY	