

STATION	PROPOSED HEIGHT	GROUND LEVEL	GRADIENT
37+400	155.025	155.113	
4+25	155.126	155.210	
4+50	155.207	155.306	
4+75	155.335	155.402	
37+500	155.426	155.497	
4+25	155.432	155.539	
4+50	155.535	155.603	
4+75	155.247	155.390	
37+600	155.062	155.199	
4+25	154.793	154.930	
4+50	154.509	154.622	
4+75	154.210	154.314	
37+700	153.909	154.007	
4+25	153.609	153.699	
4+50	153.318	153.397	
4+75	153.042	153.128	
37+800	152.799	152.895	
4+25	152.614	152.696	
4+50	152.456	152.533	
4+75	152.322	152.405	
37+900	152.242	152.313	
4+25	152.178	152.295	
4+50	152.142	152.233	
4+75	152.137	152.245	
38+000	152.147	152.275	
4+25	152.222	152.321	
4+50	152.289	152.380	
4+75	152.356	152.440	
38+100	152.417	152.500	

TYPE (P-7)

CROSS SECTION TYPE		SUPERELEVATION		CURVE BAND		STATION		GROUND LEVEL		PROPOSED HEIGHT		GRADIENT	
R=inf.		3.000% LEFT SIDE 0.000% RIGHT SIDE		R=700 L=602.721C		37+400 - 37+465		37+435 - 37+465		37+400 - 37+465		0.386% 0.240%	

DRAWING TITLE: PLAN & PROFILE
SECTION 1: STA. 37+400 - 38+100

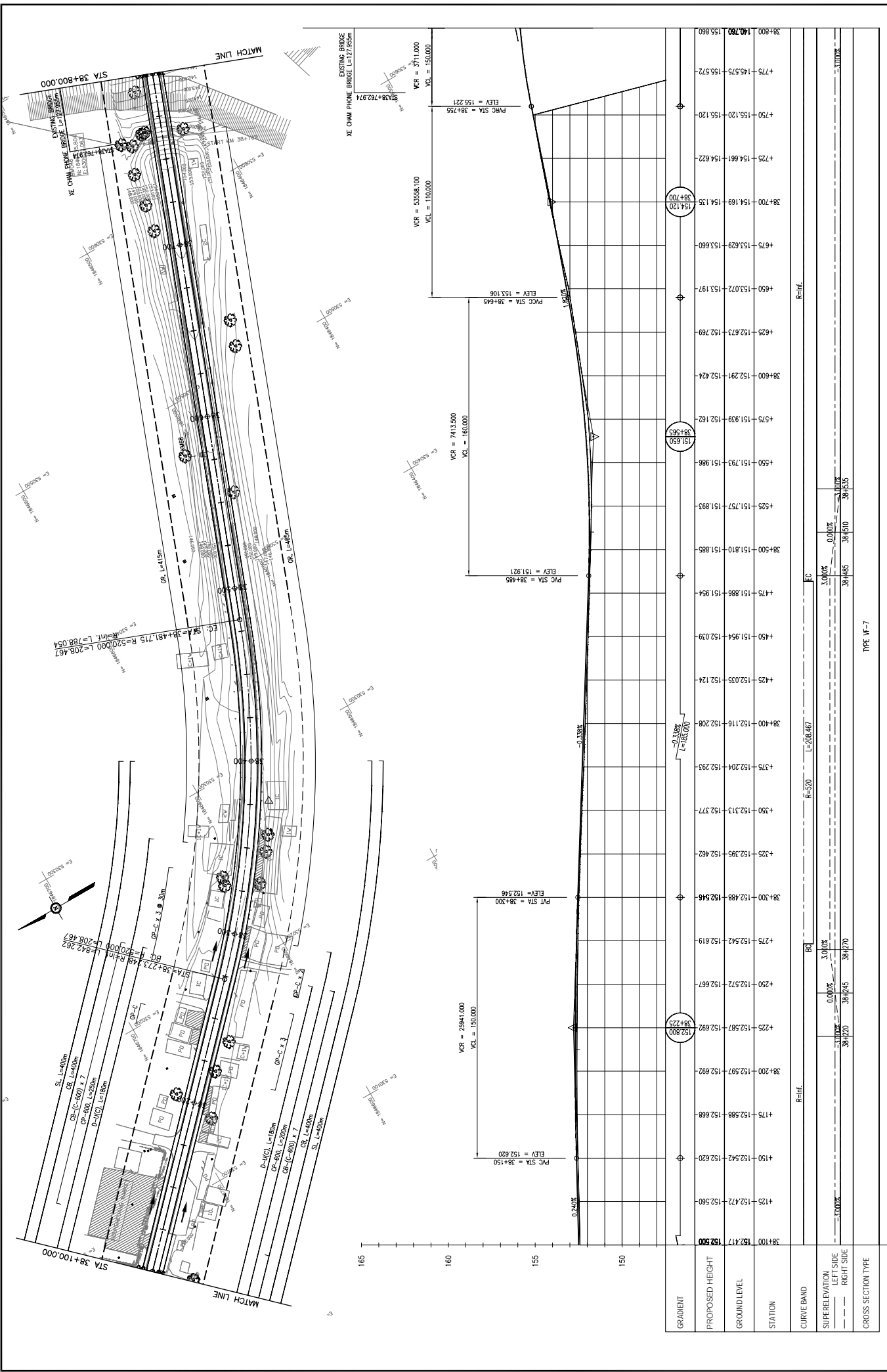
DESIGNER	DATE	REV. No.	DESCRIPTION

JAPAN INTERNATIONAL COOPERATION AGENCY
THE CONSORTIUM OF
ORIENTAL CONSULTANTS CO., LTD.
INTERNATIONAL DEVELOPMENT CENTER OF JAPAN

MINISTRY OF PUBLIC WORKS AND TRANSPORT
LAO PEOPLE'S DEMOCRATIC REPUBLIC

THE PROJECT FOR IMPROVEMENT OF NATIONAL ROAD No.9
AS EAST-WEST ECONOMIC CORRIDOR IN LAO PDR

SCALE: H=1:2,000
V=1:200
DRAWING No. C-114

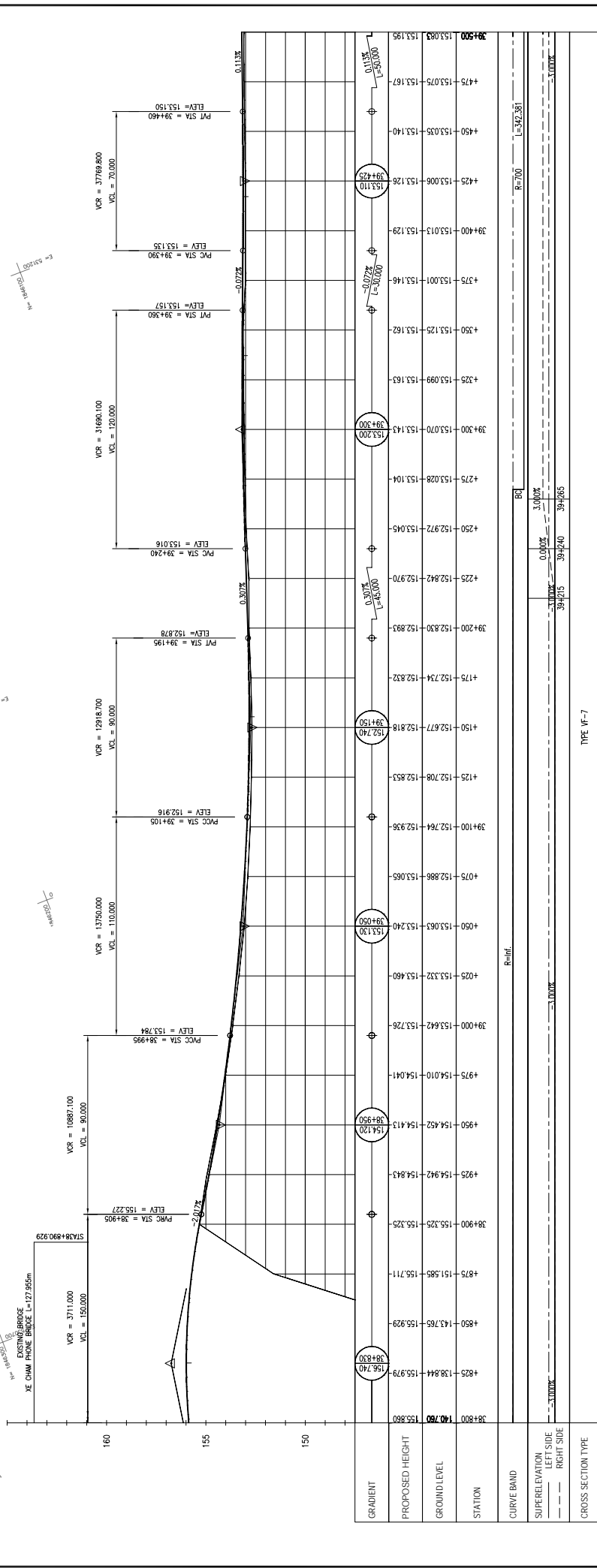
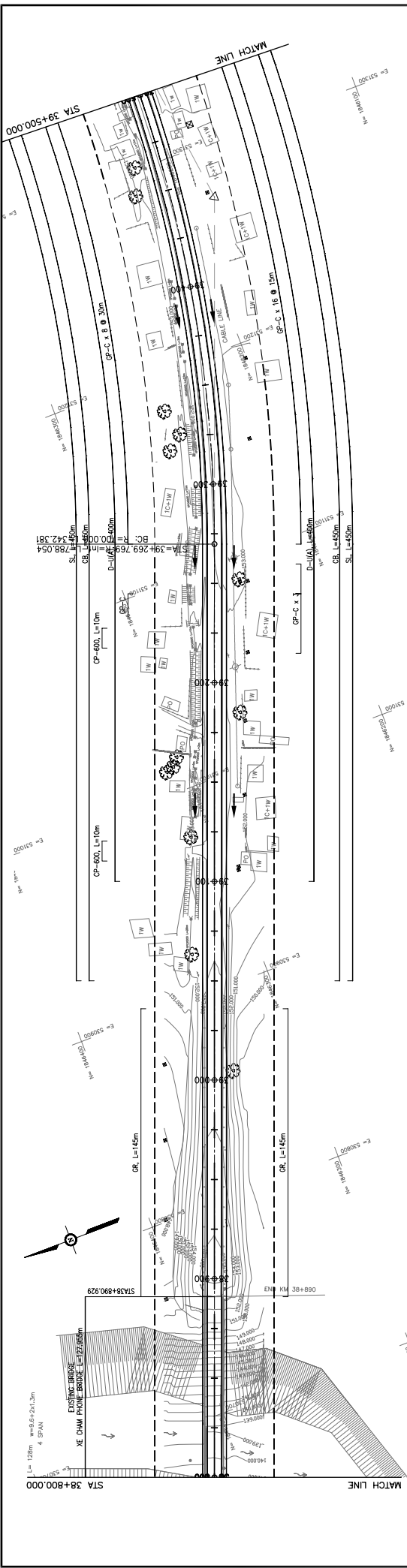


REV. No.	DATE	DESCRIPTION	SCALE
1			H=1:2,000
2			V=1:200

THE PROJECT FOR IMPROVEMENT OF NATIONAL ROAD No.9 AS EAST-WEST ECONOMIC CORRIDOR IN LAO PDR	
MINISTRY OF PUBLIC WORKS AND TRANSPORT LAO PEOPLE'S DEMOCRATIC REPUBLIC	
DRAWING TITLE PLAN & PROFILE SECTION 1: STA. 38+100 - 38+800	

TITLE	SIGNATURE
PREPARED BY	
CHECKED BY	
APPROVED BY	

JAPAN INTERNATIONAL COOPERATION AGENCY THE CONSORTIUM OF ORIENTAL CONSULTANTS CO., LTD. INTERNATIONAL DEVELOPMENT CENTER OF JAPAN		
--	--	----------



GRADIENT	PROPOSED HEIGHT	GROUND LEVEL	STATION	CURVE BAND	SUPERELEVATION LEFT SIDE RIGHT SIDE	CROSS SECTION TYPE
0.11%	153.110	153.083	39+500	R-700	0.000% 0.000%	TYPE (P-7)
0.07%	153.110	153.075	39+475			
0.07%	153.110	153.035	39+450			
0.07%	153.110	153.006	39+425			
0.07%	153.110	153.013	39+400			
0.07%	153.110	153.001	39+375			
0.07%	153.110	153.028	39+350			
0.07%	153.110	153.099	39+325			
0.07%	153.110	153.070	39+300			
0.07%	153.110	153.028	39+275			
0.07%	153.110	152.972	39+250			
0.07%	153.110	152.842	39+225			
0.07%	153.110	152.830	39+200			
0.07%	153.110	152.734	39+175			
0.07%	153.110	152.677	39+150			
0.07%	153.110	152.708	39+125			
0.07%	153.110	152.764	39+100			
0.07%	153.110	152.886	39+075			
0.07%	153.110	153.063	39+050			
0.07%	153.110	153.332	39+025			
0.07%	153.110	153.642	39+000			
0.07%	153.110	154.010	38+975			
0.07%	153.110	154.452	38+950			
0.07%	153.110	154.942	38+925			
0.07%	153.110	155.325	38+900			
0.07%	153.110	151.585	38+875			
0.07%	153.110	143.765	38+850			
0.07%	153.110	138.844	38+825			
0.07%	153.110	140.760	38+800			

**THE PROJECT FOR IMPROVEMENT OF NATIONAL ROAD No.9
AS EAST-WEST ECONOMIC CORRIDOR IN LAO PDR**

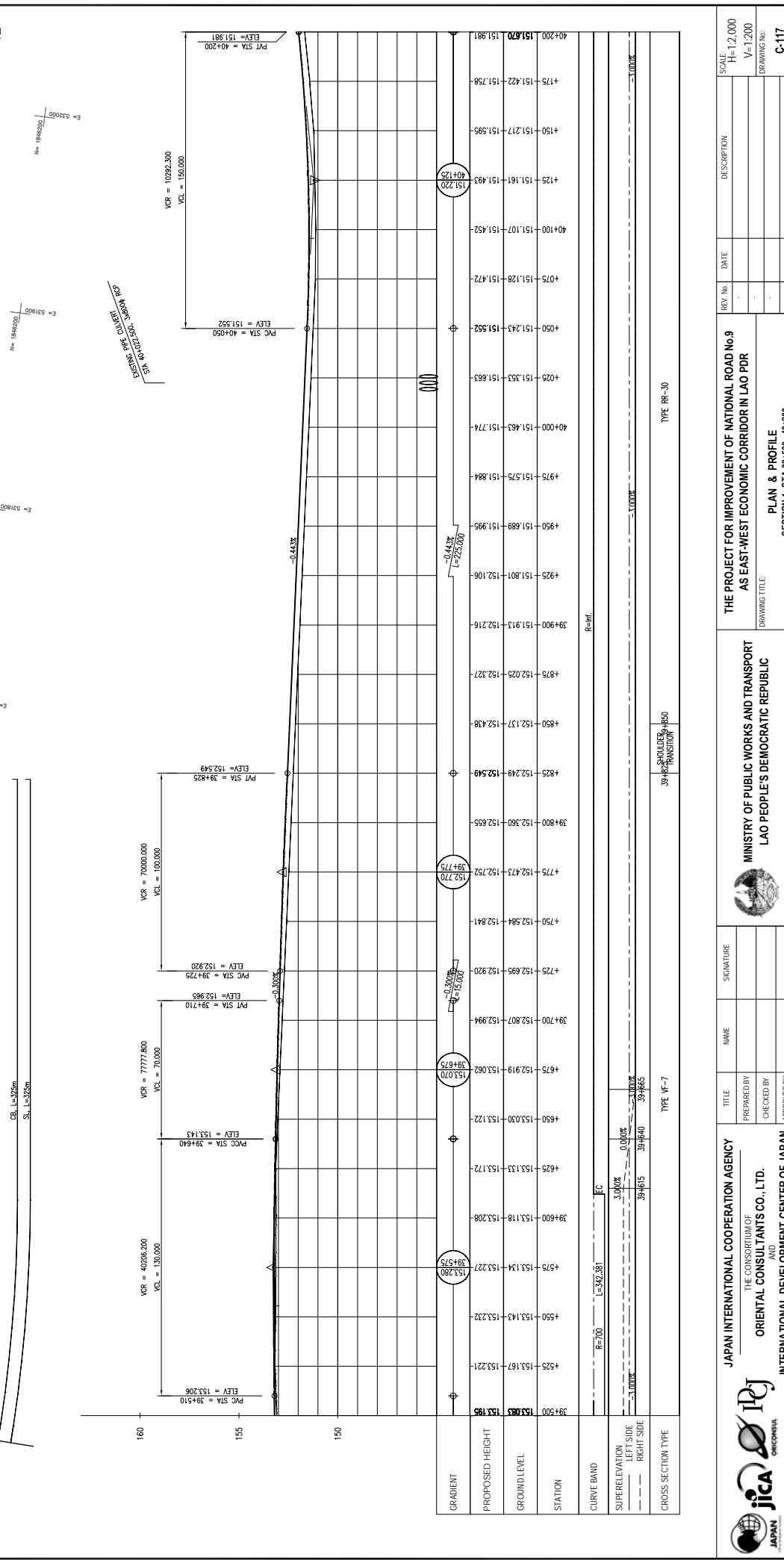
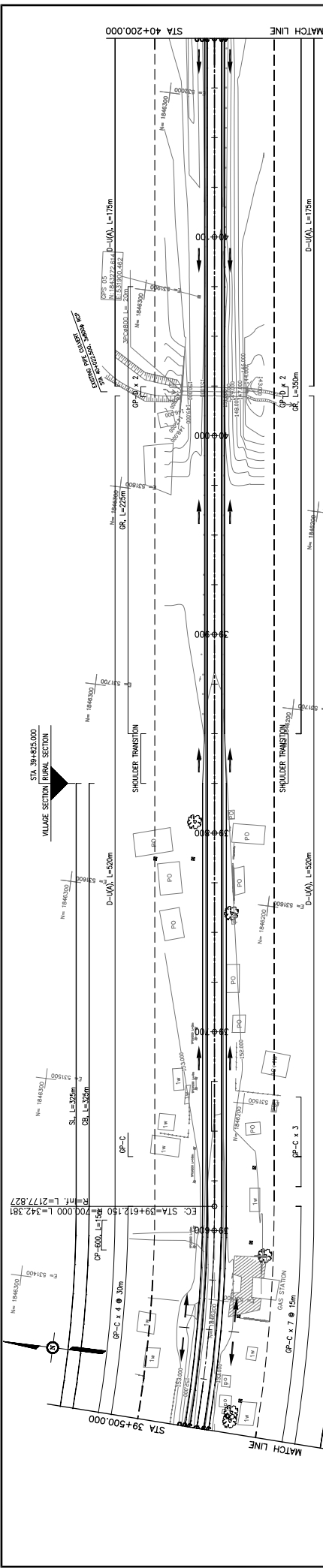
**MINISTRY OF PUBLIC WORKS AND TRANSPORT
LAO PEOPLE'S DEMOCRATIC REPUBLIC**

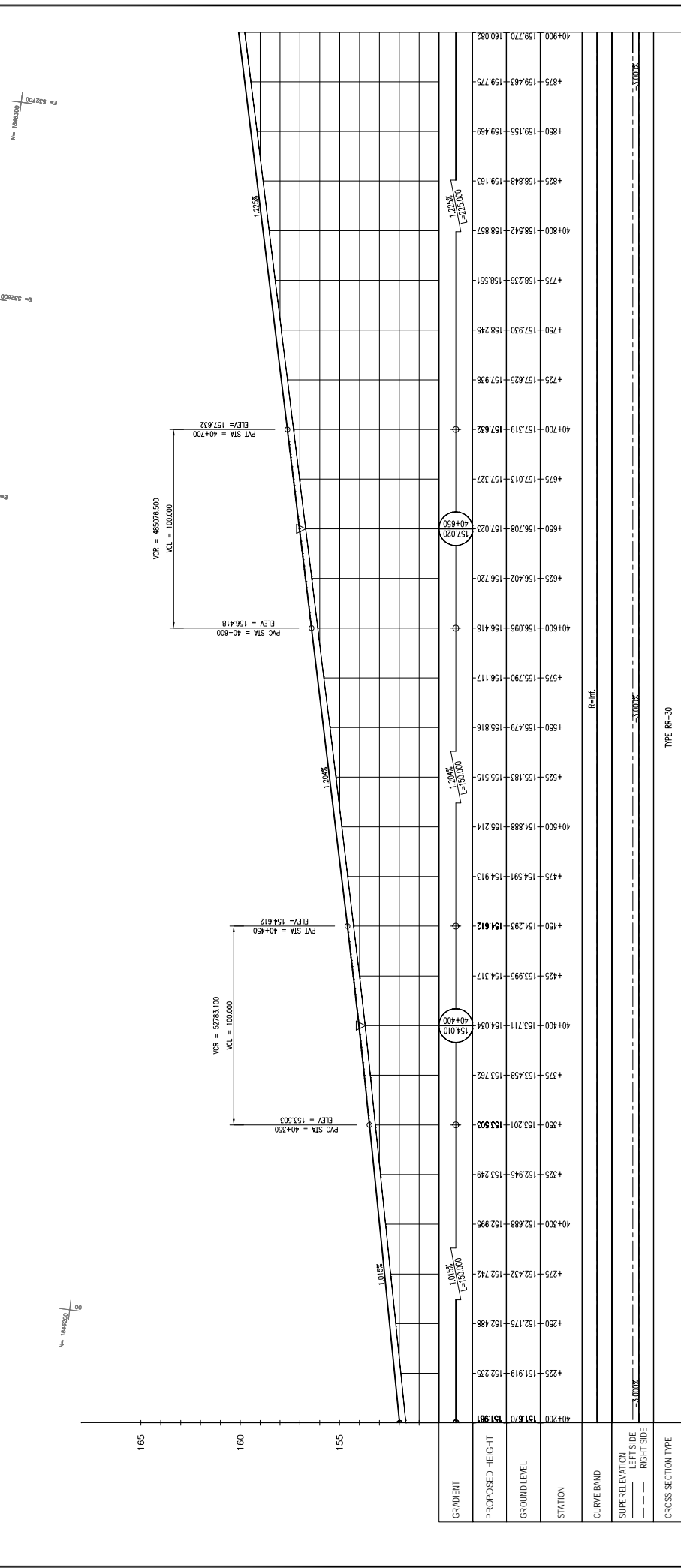
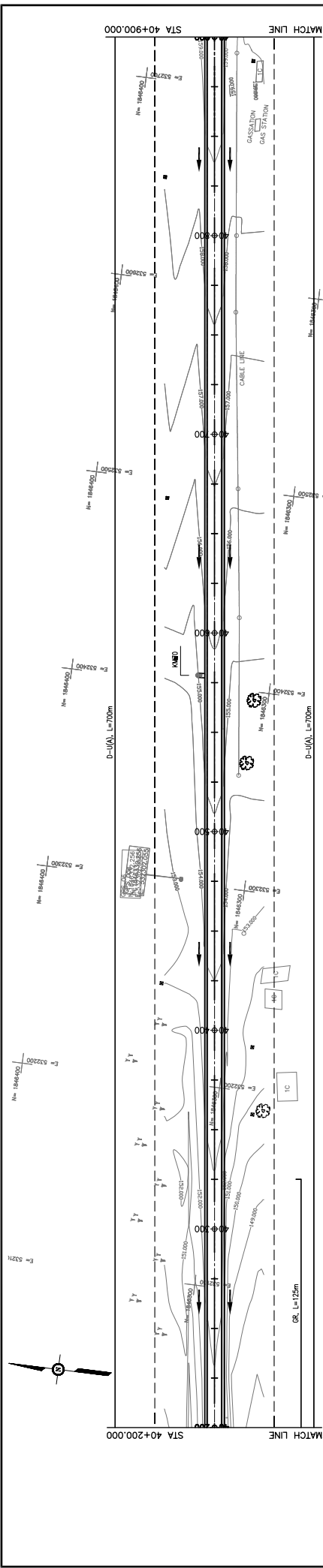
**JAPAN INTERNATIONAL COOPERATION AGENCY
THE CONSORTIUM OF
ORIENTAL CONSULTANTS CO., LTD.
INTERNATIONAL DEVELOPMENT CENTER OF JAPAN**

**PLAN & PROFILE
SECTION 1: STA 38+900 - 39+500**

REV. No.	DATE	DESCRIPTION
1		
2		
3		

SCALE: H=1:2,000
V=1:200
DRAWING No. C-116





GRADIENT	PROPOSED HEIGHT	GROUND LEVEL	STATION	CURVE BAND	SUPERELEVATION LEFT SIDE RIGHT SIDE	CROSS SECTION TYPE
	157.670	151.901	40+200			
	152.175	152.488	4+250			
	152.432	152.742	4+275			
	152.888	152.995	4+300			
	152.945	153.249	4+325			
	153.201	153.503	4+350			
	153.458	153.762	4+375			
	153.711	154.034	4+400			
	153.995	154.317	4+425			
	154.293	154.612	4+450			
	154.591	154.913	4+475			
	154.888	155.214	4+500			
	155.183	155.515	4+525			
	155.479	155.816	4+550			
	155.790	156.117	4+575			
	156.096	156.418	4+600			
	156.402	156.720	4+625			
	156.708	157.023	4+650			
	157.013	157.327	4+675			
	157.319	157.632	4+700			
	157.625	157.938	4+725			
	157.930	158.245	4+750			
	158.236	158.551	4+775			
	158.542	158.857	4+800			
	158.848	159.163	4+825			
	159.155	159.469	4+850			
	159.463	159.775	4+875			
	159.770	160.082	4+900			

PLAN & PROFILE
SECTION 1: STA 40+200 - 40+900

DRAWING TITLE

MINISTRY OF PUBLIC WORKS AND TRANSPORT
LAO PEOPLE'S DEMOCRATIC REPUBLIC

THE PROJECT FOR IMPROVEMENT OF NATIONAL ROAD No.9
AS EAST-WEST ECONOMIC CORRIDOR IN LAO PDR

JICA
ORIENTAL CONSULTANTS
INTERNATIONAL DEVELOPMENT CENTER OF JAPAN

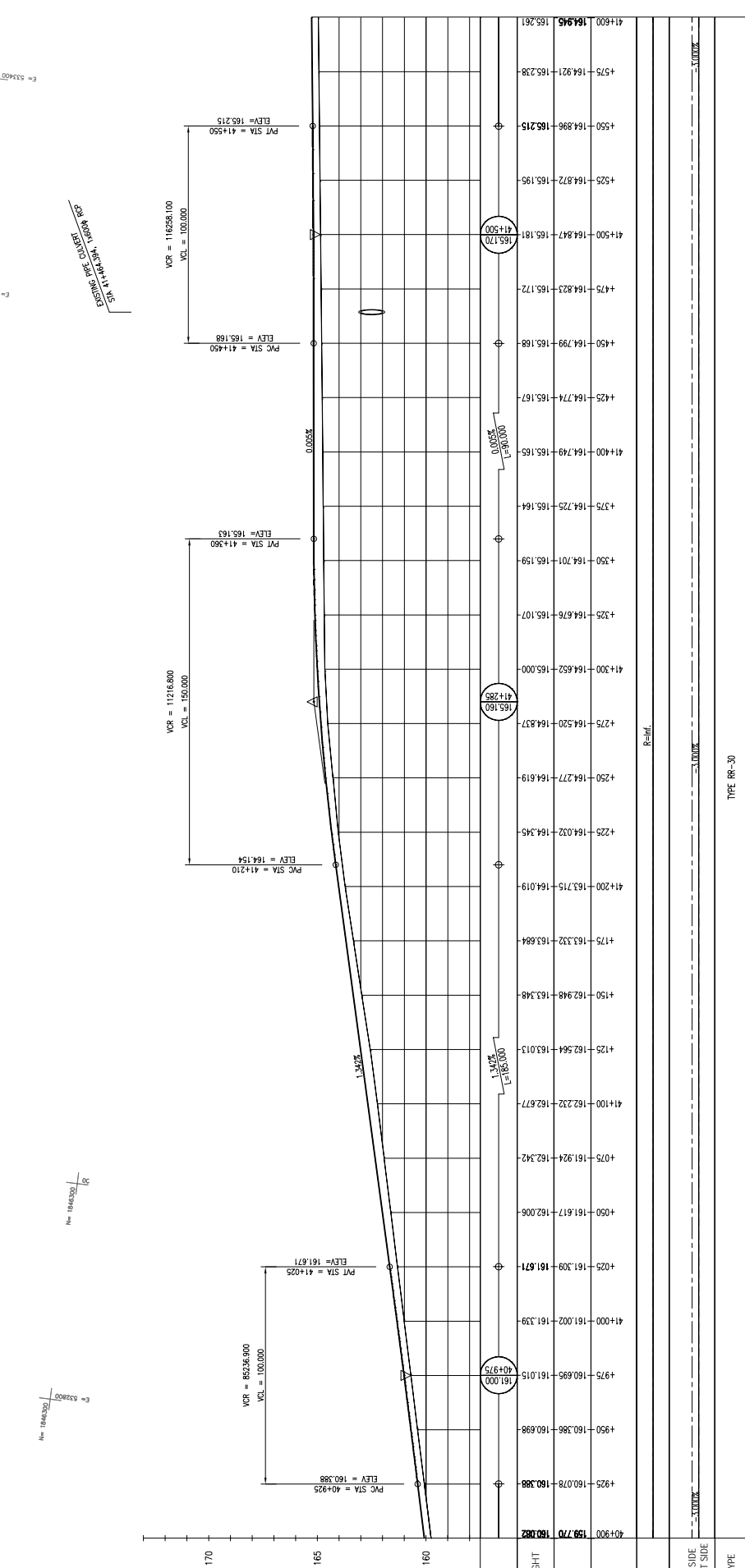
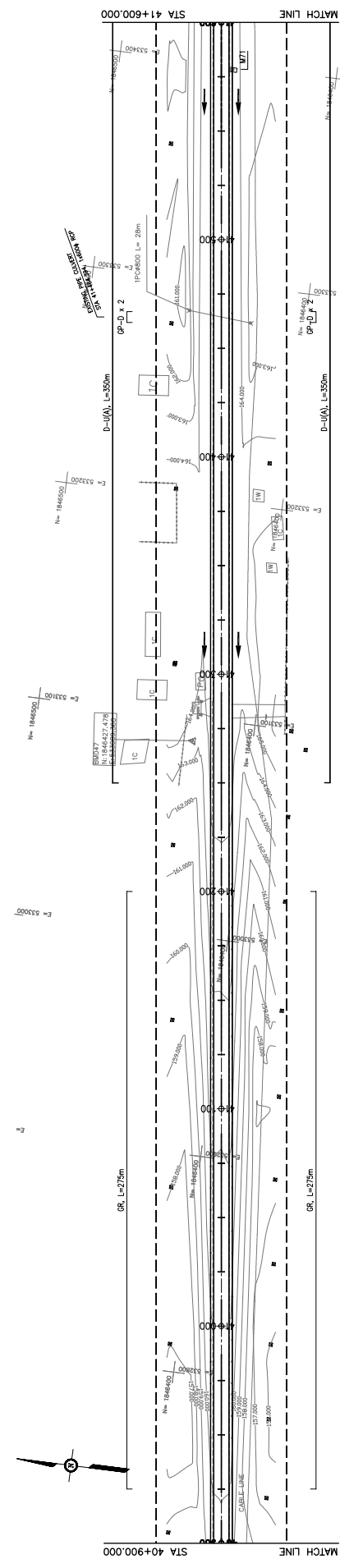
THE CONSORTIUM OF
ORIENTAL CONSULTANTS CO., LTD.

JAPAN INTERNATIONAL COOPERATION AGENCY

REV. No.	DATE	DESCRIPTION

SCALE: H=1:2,000
V=1:200

DRAWING No. C-118



STATION	PROPOSED HEIGHT	GROUND LEVEL
40+900	159.70	160.88
40+925	160.078	160.388
40+950	160.386	160.698
40+975	160.695	161.015
41+000	161.002	161.339
41+025	161.309	161.671
41+050	161.617	162.006
41+075	161.924	162.342
41+100	162.232	162.677
41+125	162.544	163.013
41+150	162.948	163.348
41+175	163.332	163.684
41+200	163.715	164.019
41+225	164.032	164.345
41+250	164.277	164.619
41+275	164.520	164.837
41+300	164.652	165.000
41+325	164.676	165.107
41+350	164.701	165.159
41+375	164.725	165.164
41+400	164.749	165.165
41+425	164.774	165.167
41+450	164.799	165.168
41+475	164.823	165.172
41+500	164.847	165.181
41+525	164.872	165.195
41+550	164.896	165.215
41+575	164.921	165.238
41+600	164.945	165.261

TYPE: RR-30

PLAN & PROFILE
SECTION 1: STA 40+900 - 41+600

DRAWING TITLE

MINISTRY OF PUBLIC WORKS AND TRANSPORT
LAO PEOPLE'S DEMOCRATIC REPUBLIC

THE PROJECT FOR IMPROVEMENT OF NATIONAL ROAD No.9
AS EAST-WEST ECONOMIC CORRIDOR IN LAO PDR

SCALE: H=1:2,000
V=1:200

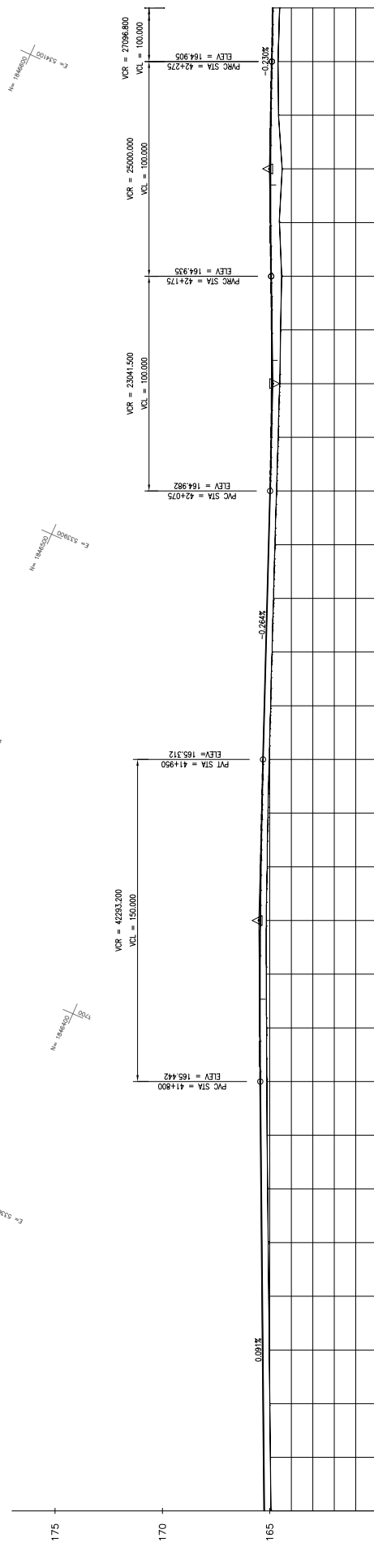
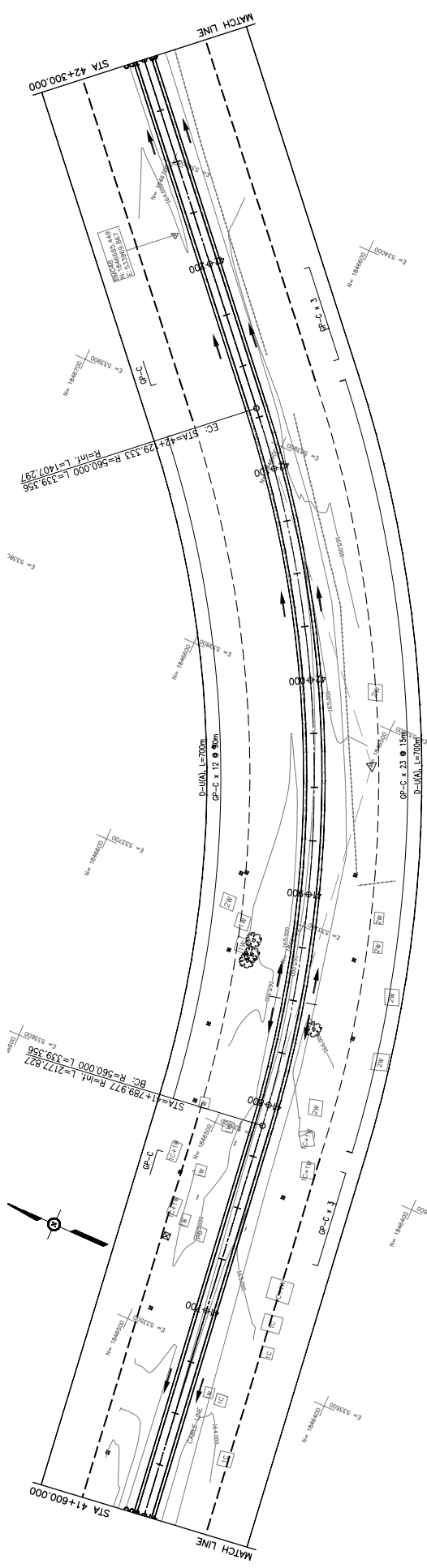
DRAWING No. C-119

REV. No.	DATE	DESCRIPTION

TITLE	NAME	SIGNATURE
PREPARED BY		
CHECKED BY		
APPROVED BY		

JAPAN INTERNATIONAL COOPERATION AGENCY
THE CONSORTIUM OF
ORIENTAL CONSULTANTS CO., LTD.
INTERNATIONAL DEVELOPMENT CENTER OF JAPAN

jica ORIENTALCONSULTANTS



STATION	PROPOSED HEIGHT	GROUND LEVEL	GRADIENT
41+600	164.945	165.261	
4+625	164.968	165.283	
4+650	164.993	165.306	
4+675	165.018	165.329	
4+700	165.043	165.351	
4+725	165.067	165.374	
4+750	165.098	165.397	
4+775	165.118	165.419	
4+800	165.132	165.442	
4+825	165.142	165.457	
4+850	165.153	165.458	
4+875	165.154	165.444	
4+900	165.115	165.414	
4+925	165.077	165.371	
4+950	165.015	165.312	
4+975	164.961	165.246	
4+000	164.888	165.180	
4+025	164.818	165.114	
4+050	164.750	165.048	
4+075	164.677	164.982	
4+100	164.598	164.930	
4+125	164.530	164.904	
4+150	164.493	164.906	
4+175	164.445	164.935	
4+200	164.548	164.965	
4+225	164.417	164.970	
4+250	164.590	164.950	
4+275	164.617	164.905	
4+300	164.537	164.859	

TYPE: RR-30

CROSS SECTION TYPE

SUPERELEVATION LEFT SIDE: 0.000%

SUPERELEVATION RIGHT SIDE: 0.000%

CURVE BAND: BC R=560 L=339.355, EC R=560 L=339.355

JAPAN INTERNATIONAL COOPERATION AGENCY
 THE CONSORTIUM OF
ORIENTAL CONSULTANTS CO., LTD.
 INTERNATIONAL DEVELOPMENT CENTER OF JAPAN

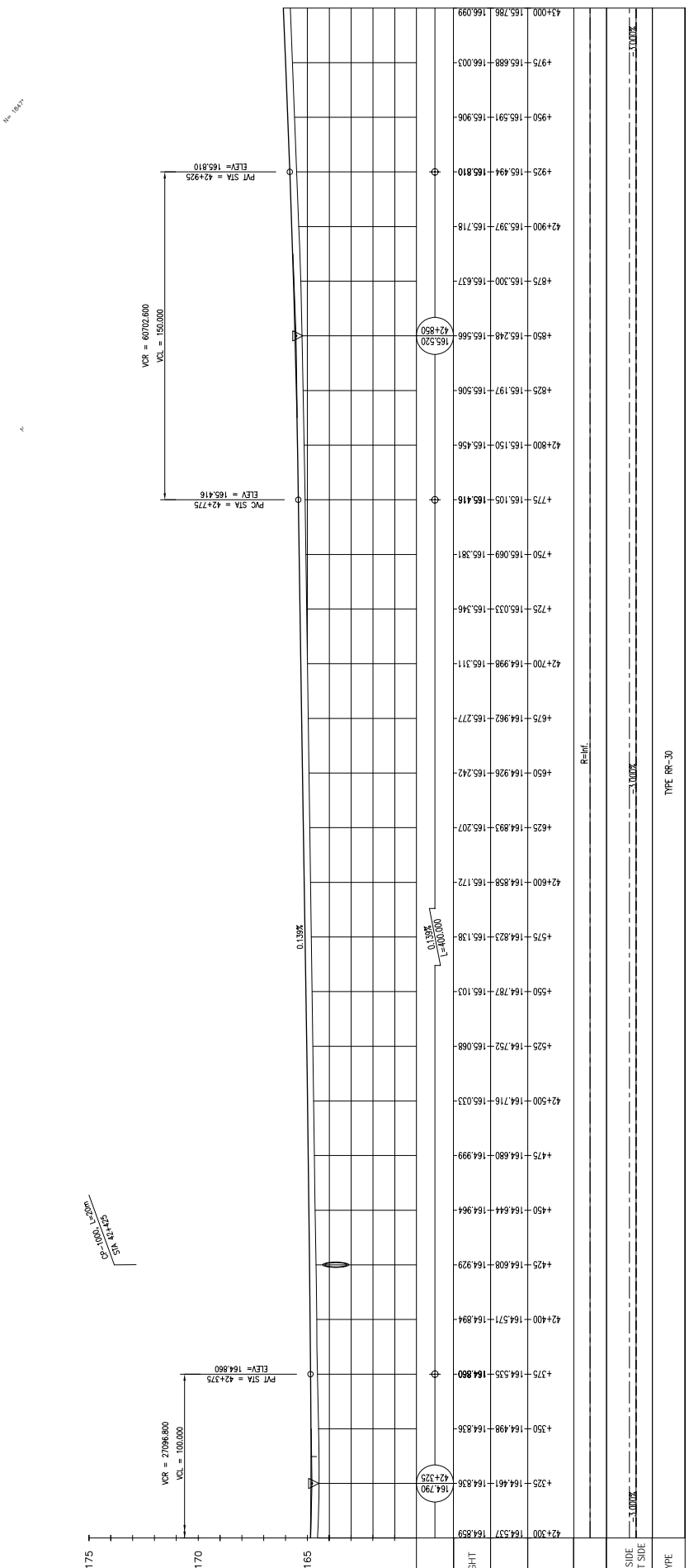
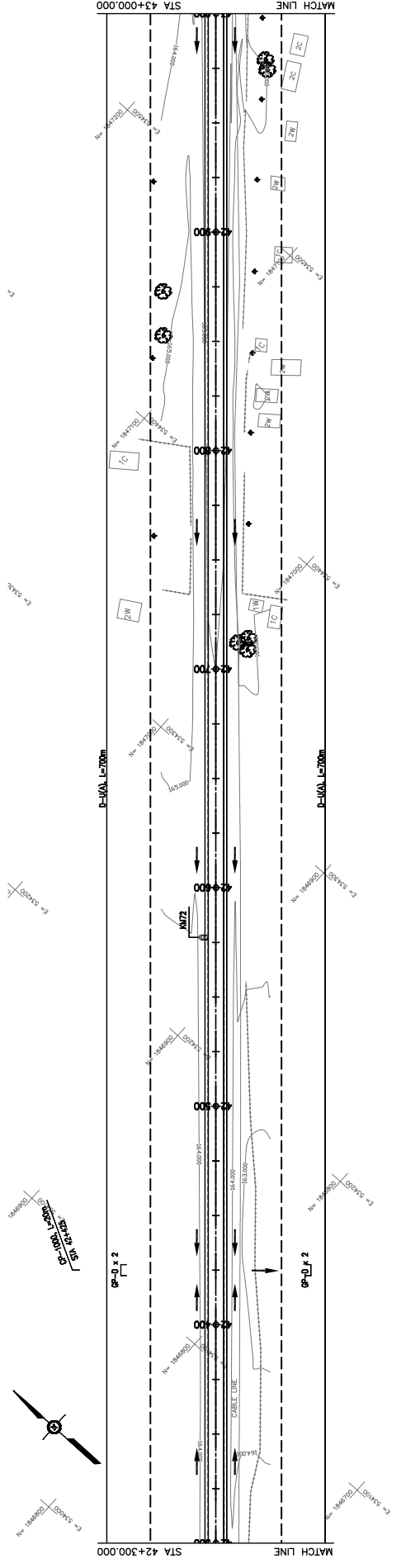
MINISTRY OF PUBLIC WORKS AND TRANSPORT
LAO PEOPLE'S DEMOCRATIC REPUBLIC

THE PROJECT FOR IMPROVEMENT OF NATIONAL ROAD No.9
AS EAST-WEST ECONOMIC CORRIDOR IN LAO PDR

PLAN & PROFILE
SECTION 1: STA 41+600 - 42+300

REV. No.	DATE	DESCRIPTION

SCALE: H=1:2,000
 V=1:200
 DRAWING No.: **C-120**



STATION	GROUND LEVEL	PROPOSED HEIGHT	GRADIENT
42+300	164.537	164.859	
42+325	164.461	164.836	
42+350	164.498	164.836	
42+375	164.535	164.880	
42+400	164.571	164.894	
42+425	164.608	164.929	
42+450	164.644	164.964	
42+475	164.680	164.999	
42+500	164.716	165.033	
42+525	164.752	165.068	
42+550	164.787	165.103	
42+575	164.823	165.138	
42+600	164.858	165.172	
42+625	164.893	165.207	
42+650	164.928	165.242	
42+675	164.962	165.277	
42+700	164.998	165.311	
42+725	165.033	165.346	
42+750	165.069	165.381	
42+775	165.105	165.416	
42+800	165.150	165.456	
42+825	165.197	165.506	
42+850	165.248	165.566	
42+875	165.300	165.637	
42+900	165.397	165.718	
42+925	165.494	165.810	
42+950	165.591	165.906	
42+975	165.688	166.003	
43+000	165.786	166.099	

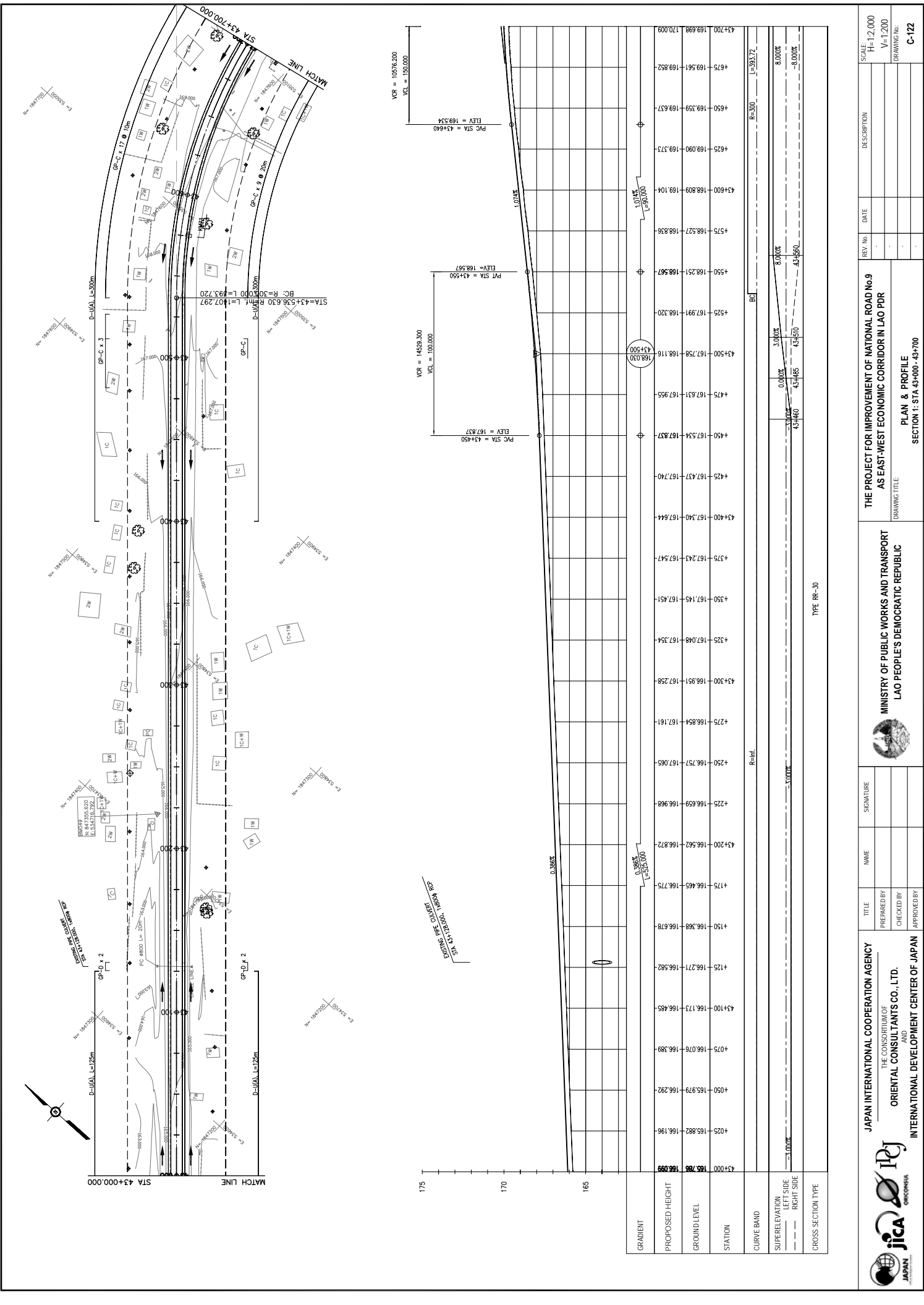
PLAN & PROFILE
SECTION 1: STA 42+500 - 43+000

MINISTRY OF PUBLIC WORKS AND TRANSPORT
LAO PEOPLE'S DEMOCRATIC REPUBLIC

JAPAN INTERNATIONAL COOPERATION AGENCY
THE CONSORTIUM OF
ORIENTAL CONSULTANTS CO., LTD.
INTERNATIONAL DEVELOPMENT CENTER OF JAPAN

REV. No.	DATE	DESCRIPTION

SCALE: H=1:2,000
V=1:200
DRAWING No. C-121



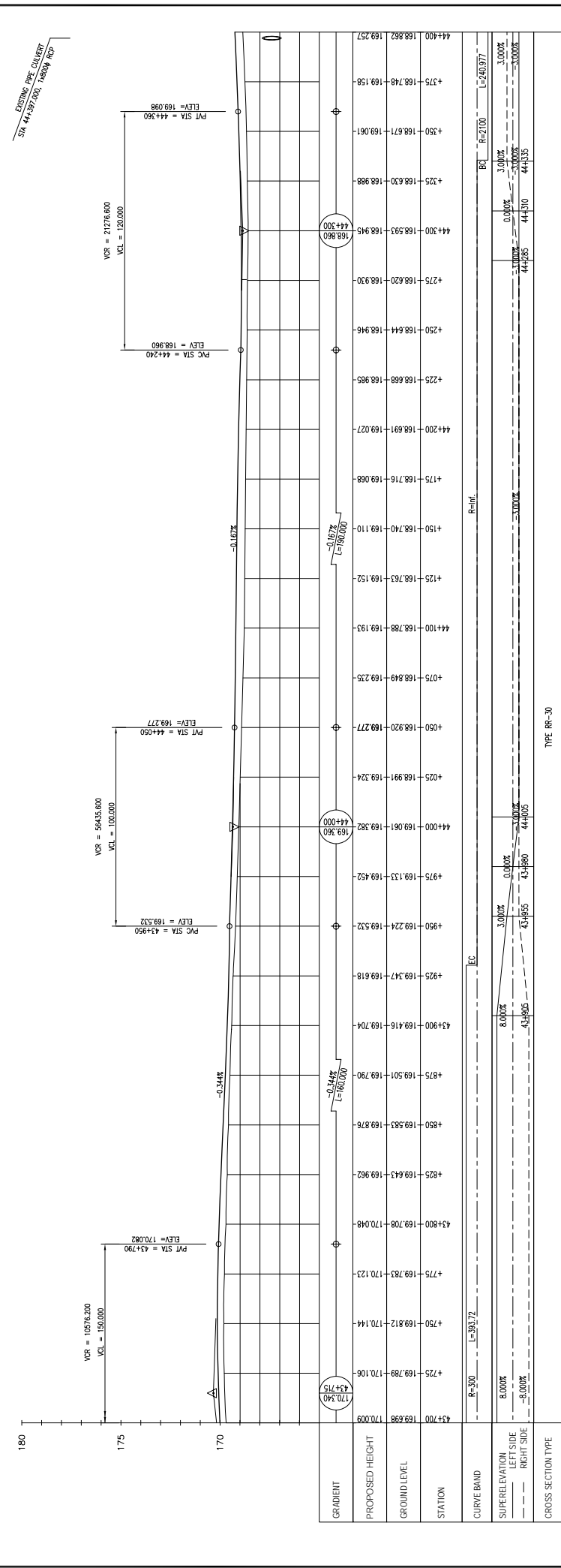
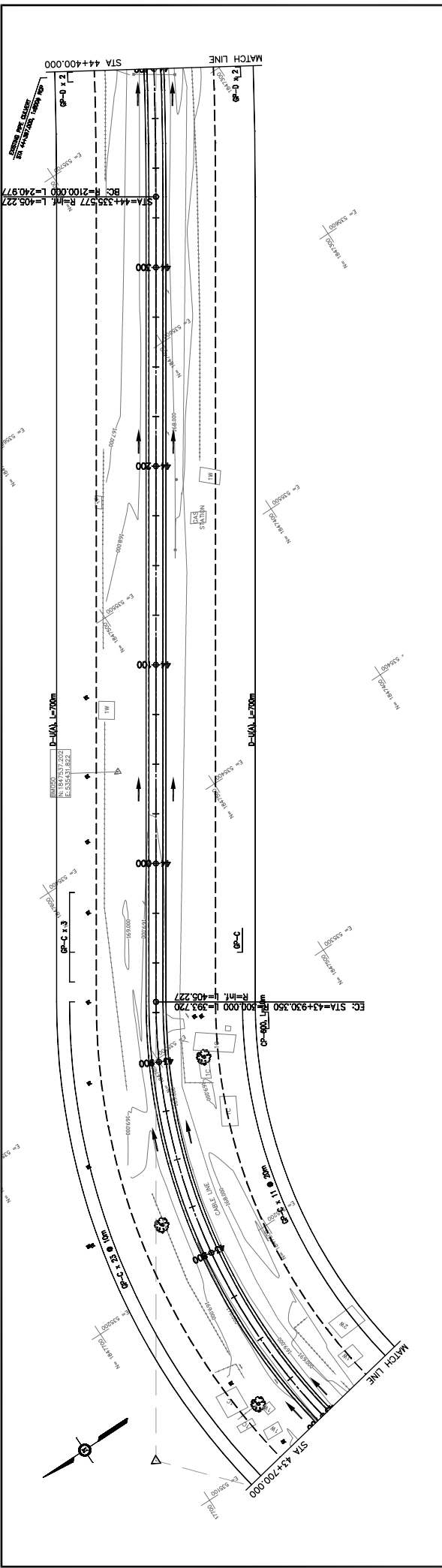
REV. No.	DATE	DESCRIPTION
1		
2		
3		
4		
5		

SCALE:	H=1:2,000
	V=1:200
DRAWING No.	C-122

THE PROJECT FOR IMPROVEMENT OF NATIONAL ROAD No.9 AS EAST-WEST ECONOMIC CORRIDOR IN LAO PDR
MINISTRY OF PUBLIC WORKS AND TRANSPORT LAO PEOPLE'S DEMOCRATIC REPUBLIC
JICA THE CONSORTIUM OF ORIENTAL CONSULTANTS CO., LTD. INTERNATIONAL DEVELOPMENT CENTER OF JAPAN

NAME	SIGNATURE
TITLE	
PREPARED BY	
CHECKED BY	
APPROVED BY	

GRADIENT	
PROPOSED HEIGHT	
GROUND LEVEL	
STATION	
CURVE BAND	
SUPERELEVATION LEFT SIDE	
RIGHT SIDE	
CROSS SECTION TYPE	TYPE RR-30



REV. NO.	DATE	DESCRIPTION

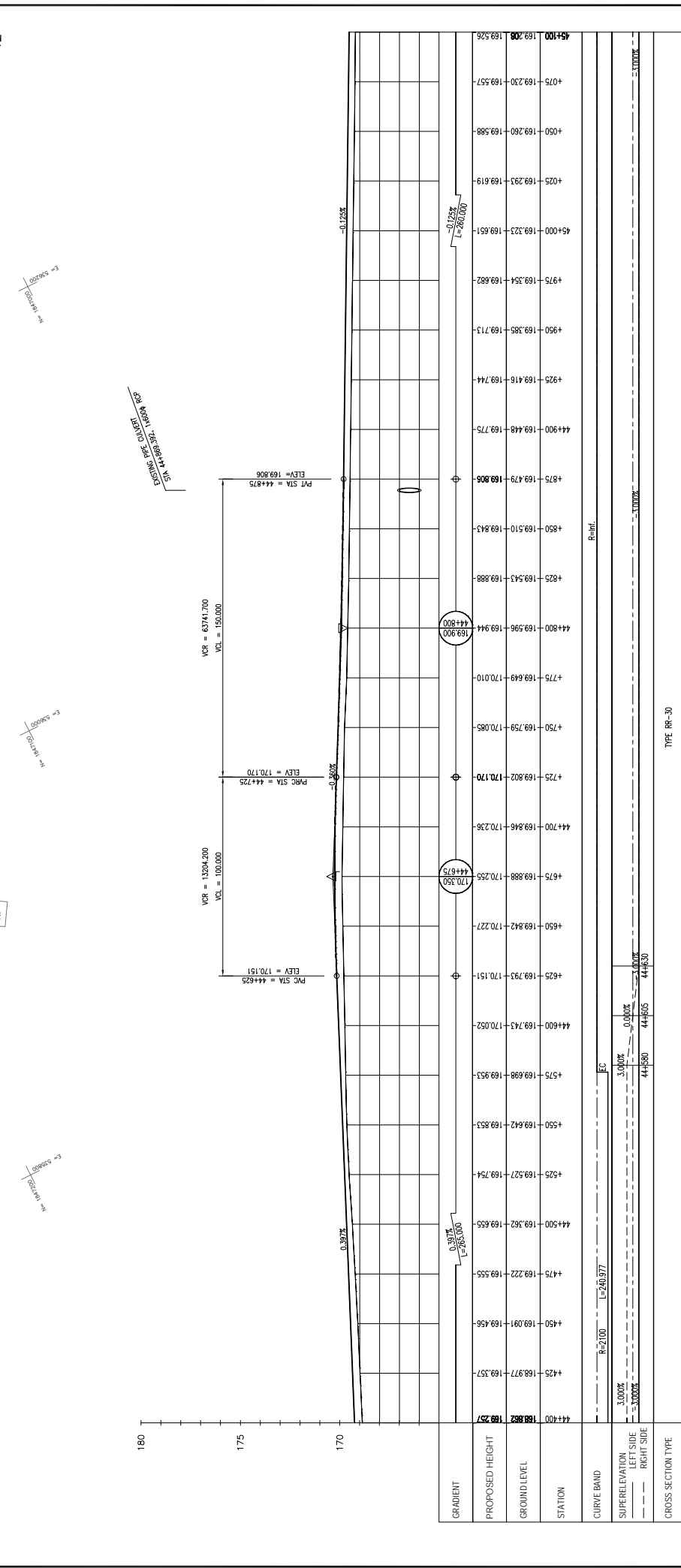
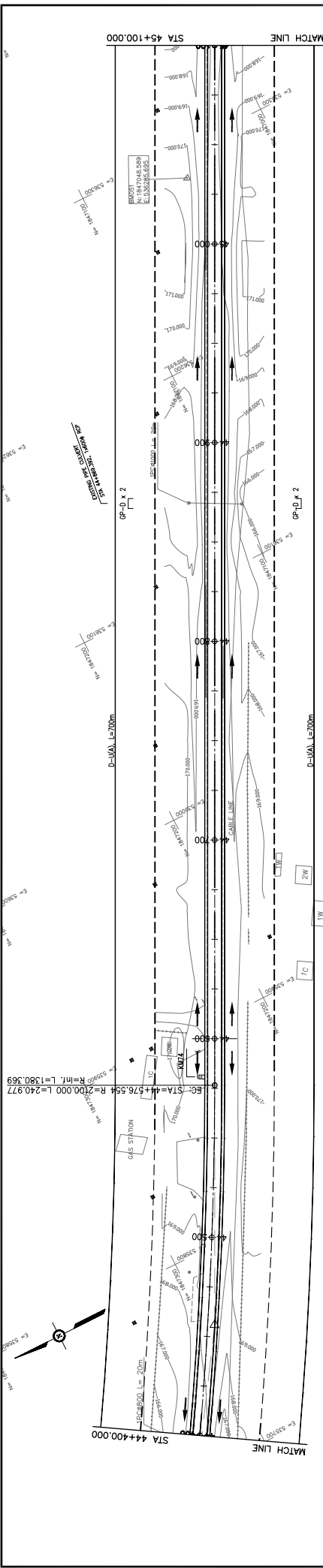
JAPAN INTERNATIONAL COOPERATION AGENCY
 THE CONSORTIUM OF
ORIENTAL CONSULTANTS CO., LTD.
INTERNATIONAL DEVELOPMENT CENTER OF JAPAN

MINISTRY OF PUBLIC WORKS AND TRANSPORT
LAO PEOPLE'S DEMOCRATIC REPUBLIC

THE PROJECT FOR IMPROVEMENT OF NATIONAL ROAD No.9
AS EAST-WEST ECONOMIC CORRIDOR IN LAO PDR

PLAN & PROFILE
SECTION 1: STA 43+700 - 44+400

SCALE: H=1:2,000
 V=1:200
 DRAWING NO. **C-123**



STATION	PROPOSED HEIGHT	GROUND LEVEL	GRADIENT
44+700	169.882	169.257	0.391%
44+725	169.842	169.553	0.391%
44+750	169.793	169.853	0.391%
44+775	169.743	169.953	0.391%
44+800	169.693	169.953	0.391%
44+825	169.642	169.953	0.391%
44+850	169.592	169.953	0.391%
44+875	169.542	169.953	0.391%
44+900	169.492	169.953	0.391%
44+925	169.442	169.953	0.391%
44+950	169.392	169.953	0.391%
44+975	169.342	169.953	0.391%
45+000	169.292	169.953	0.391%
45+025	169.242	169.953	0.391%
45+050	169.192	169.953	0.391%
45+075	169.142	169.953	0.391%
45+100	169.092	169.953	0.391%

MINISTRY OF PUBLIC WORKS AND TRANSPORT
LAO PEOPLE'S DEMOCRATIC REPUBLIC

THE PROJECT FOR IMPROVEMENT OF NATIONAL ROAD No.9
AS EAST-WEST ECONOMIC CORRIDOR IN LAO PDR

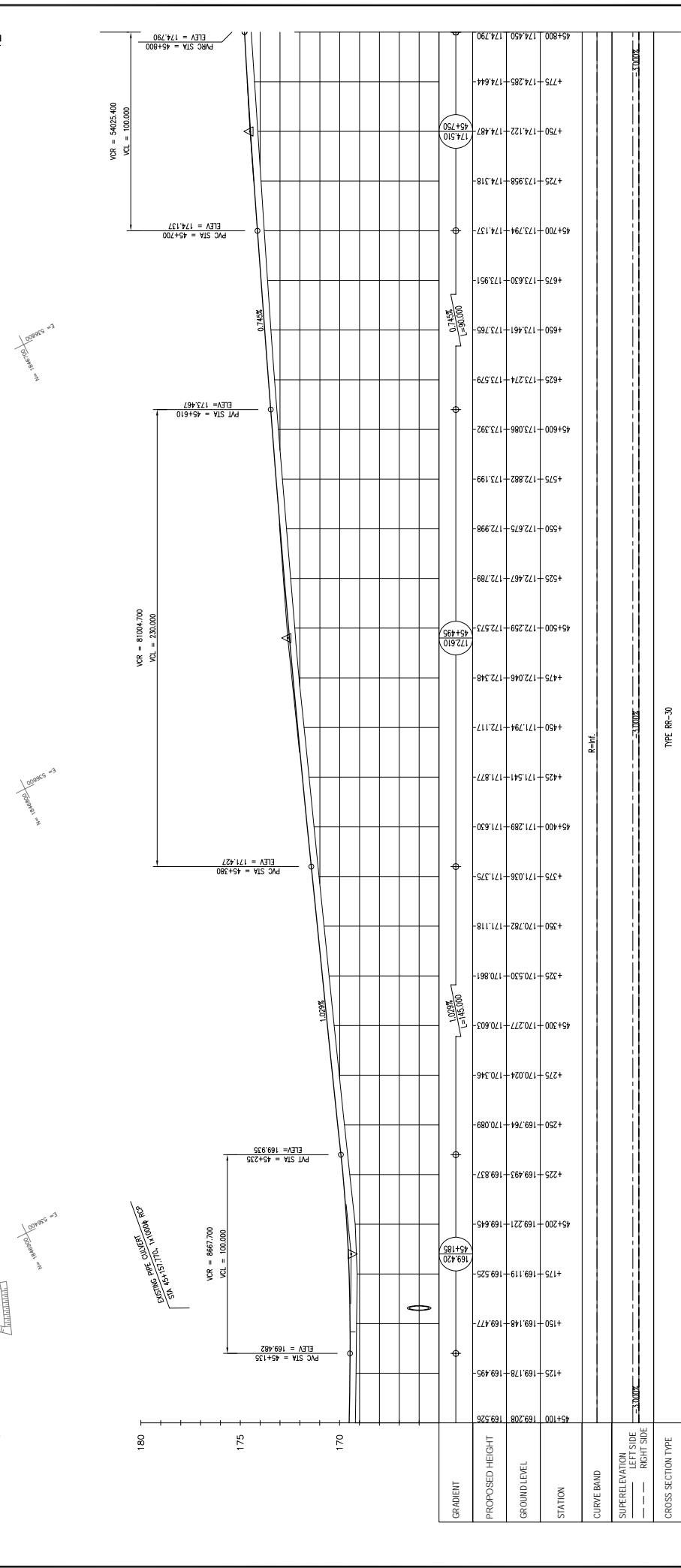
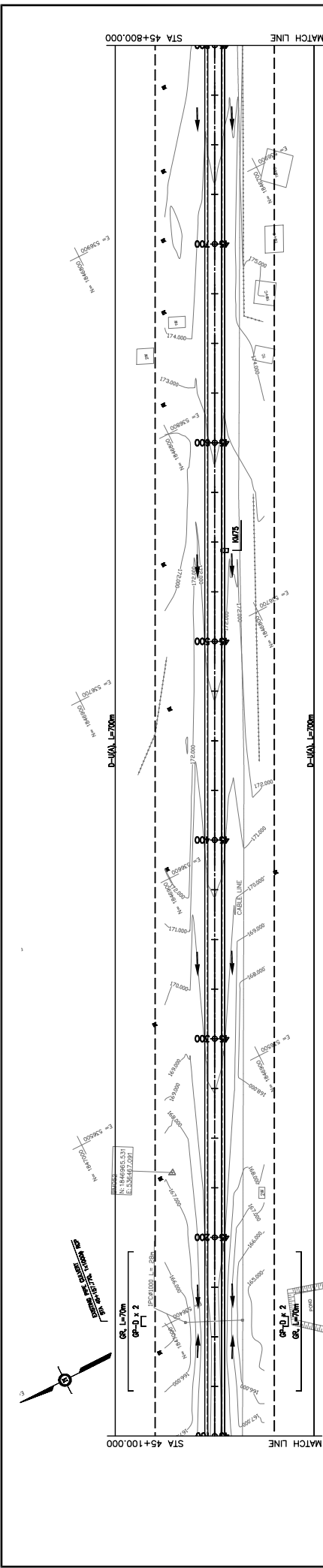
DRAWING TITLE: **PLAN & PROFILE**
SECTION 1: STA 44+400 - 45+100

SCALE: H=1:2,000
V=1:200

DRAWING NO.: **C-124**

TYPE: RR-30





REV. No.	DATE	DESCRIPTION
1		
2		
3		

SCALE: H=1:2,000
V=1:200

THE PROJECT FOR IMPROVEMENT OF NATIONAL ROAD No.9
AS EAST-WEST ECONOMIC CORRIDOR IN LAO PDR

MINISTRY OF PUBLIC WORKS AND TRANSPORT
LAO PEOPLE'S DEMOCRATIC REPUBLIC

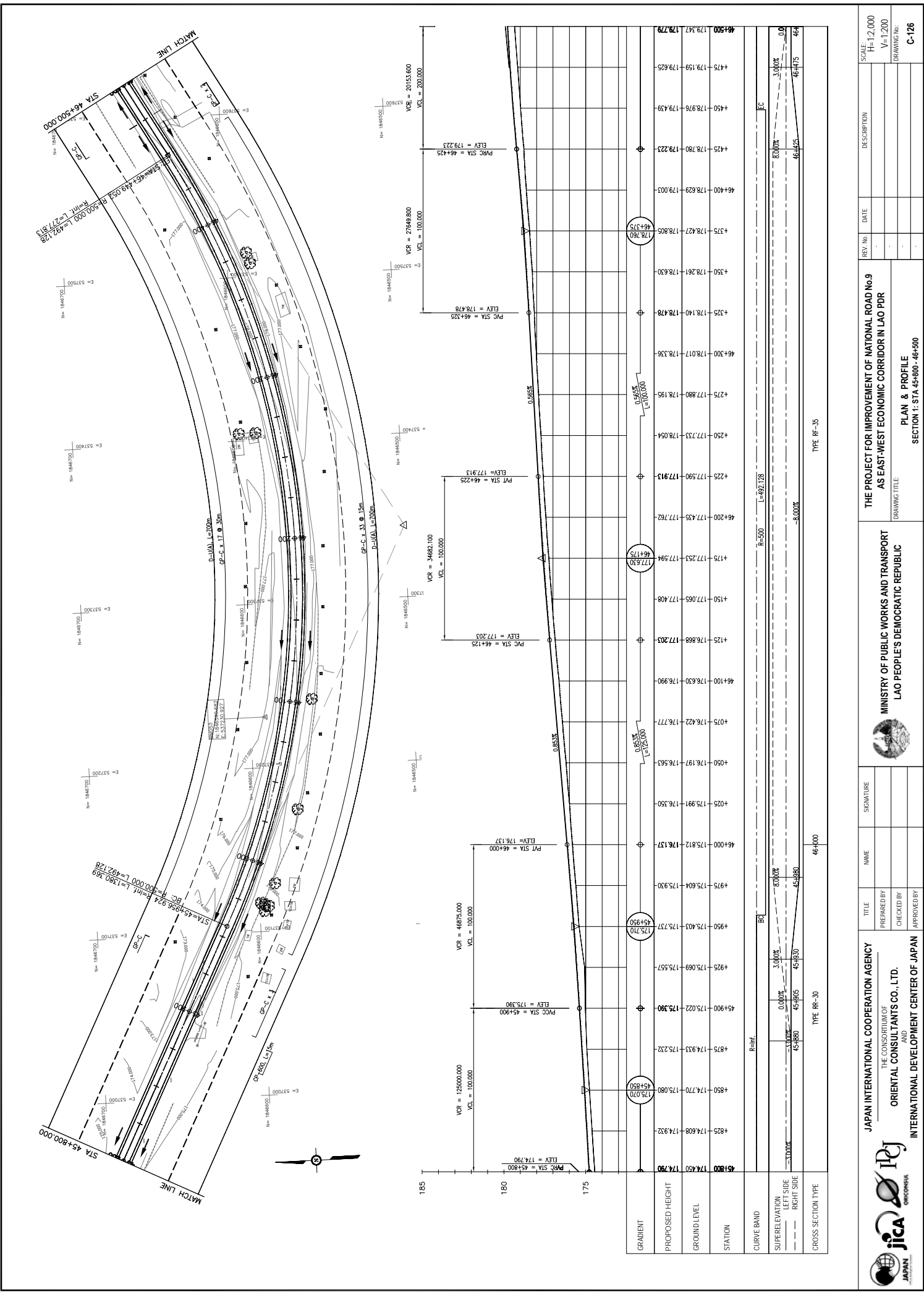
JAPAN INTERNATIONAL COOPERATION AGENCY
THE CONSORTIUM OF
ORIENTAL CONSULTANTS CO., LTD.
INTERNATIONAL DEVELOPMENT CENTER OF JAPAN

PLAN & PROFILE
SECTION 1: STA 45+100 - 45+800

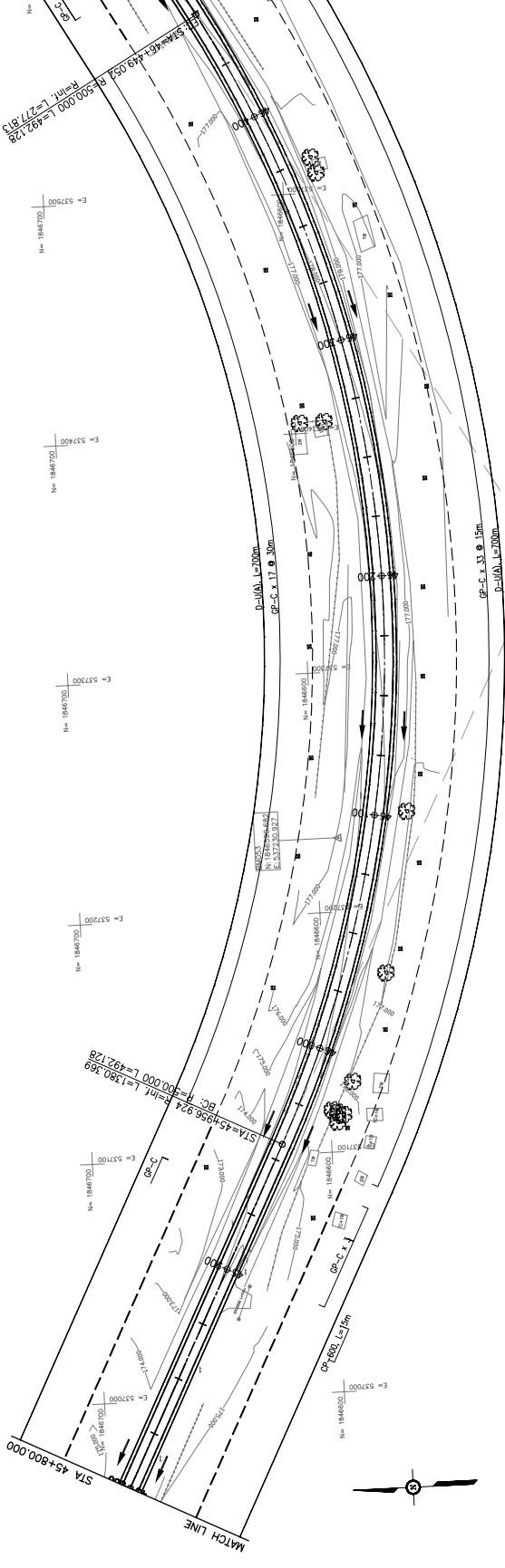
DRAWING TITLE

TYPE: RR-30

C-125



MATCH LINE
 STA 45+800.000
 STA 46+500.000



STATION	PROPOSED HEIGHT	GROUND LEVEL	GRADIENT
45+800	174.50	174.70	175.070
45+825	174.808	174.930	175.080
45+850	174.770	175.080	175.070
45+875	174.933	175.232	175.232
45+900	175.022	175.390	175.390
45+925	175.069	175.557	175.557
45+950	175.403	175.737	175.737
45+975	175.804	175.930	175.930
46+000	175.812	176.137	176.137
46+025	175.991	176.550	176.550
46+050	176.197	176.583	176.583
46+075	176.422	176.777	176.777
46+100	176.630	176.990	176.990
46+125	176.868	177.203	177.203
46+150	177.065	177.408	177.408
46+175	177.253	177.594	177.594
46+200	177.435	177.762	177.762
46+225	177.590	177.913	177.913
46+250	177.733	178.054	178.054
46+275	177.880	178.195	178.195
46+300	178.017	178.336	178.336
46+325	178.140	178.478	178.478
46+350	178.261	178.630	178.630
46+375	178.427	178.803	178.803
46+400	178.629	179.003	179.003
46+425	178.780	179.223	179.223
46+450	178.976	179.439	179.439
46+475	179.159	179.629	179.629
46+500	179.347	179.779	179.779

JAPAN INTERNATIONAL COOPERATION AGENCY
 THE CONSORTIUM OF
ORIENTAL CONSULTANTS CO., LTD.
 INTERNATIONAL DEVELOPMENT CENTER OF JAPAN

MINISTRY OF PUBLIC WORKS AND TRANSPORT
 LAO PEOPLE'S DEMOCRATIC REPUBLIC

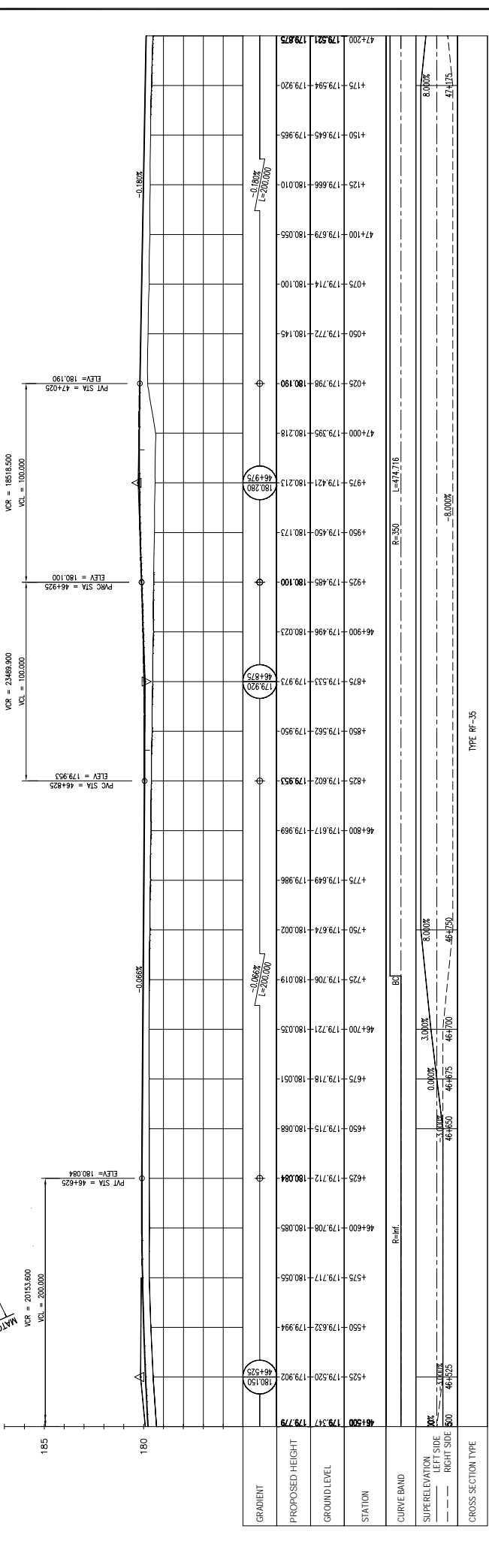
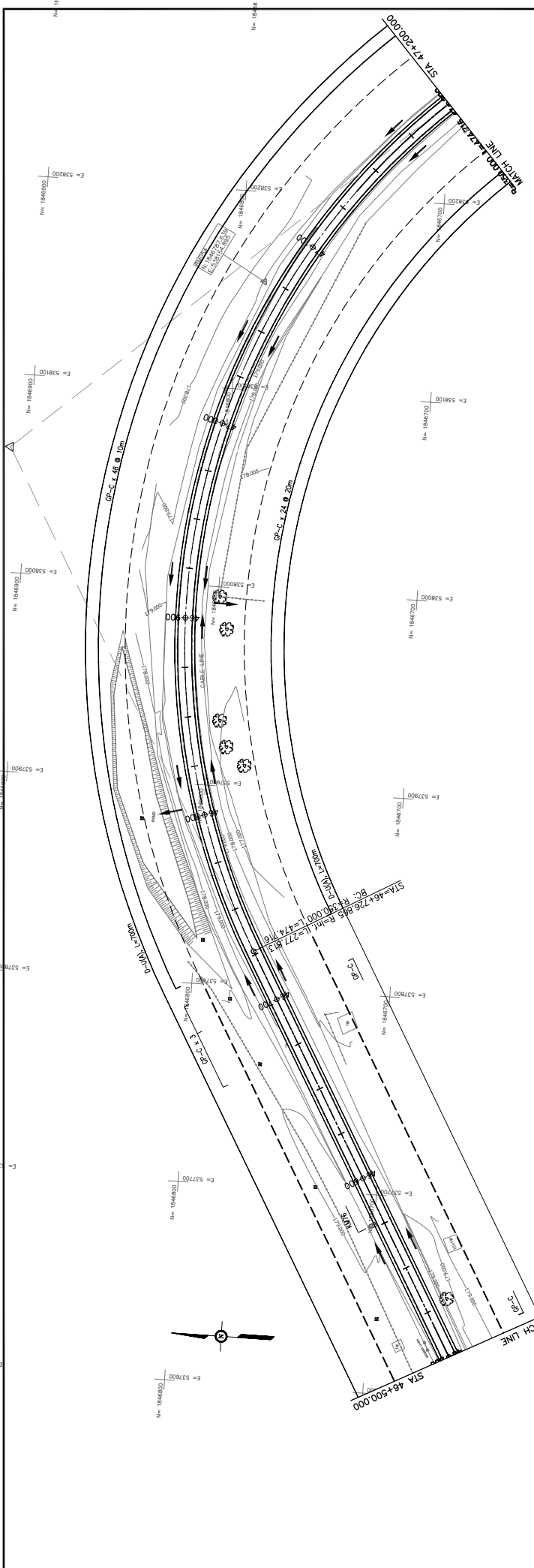
THE PROJECT FOR IMPROVEMENT OF NATIONAL ROAD No.9
 AS EAST-WEST ECONOMIC CORRIDOR IN LAO PDR

PLAN & PROFILE
 SECTION 1: STA 45+800 - 46+500

DRAWING TITLE

REV. No.	DATE	DESCRIPTION

SCALE: H=1:2,000
 V=1:200
 DRAWING No. C-126



TYPE RF-35

GRADIENT							
PROPOSED HEIGHT	179.547	179.778	180.150	179.902	179.994	180.084	180.088
GROUND LEVEL	179.547	179.778	179.902	179.994	180.084	180.088	180.051
STATION	46+500	46+525	46+550	46+575	46+600	46+625	46+650
CURVE BAND	R=Inf.						
SUPERELEVATION	0.000%						
LEFT SIDE	0.000%						
RIGHT SIDE	0.000%						
CROSS SECTION TYPE	TYPE RF-35						

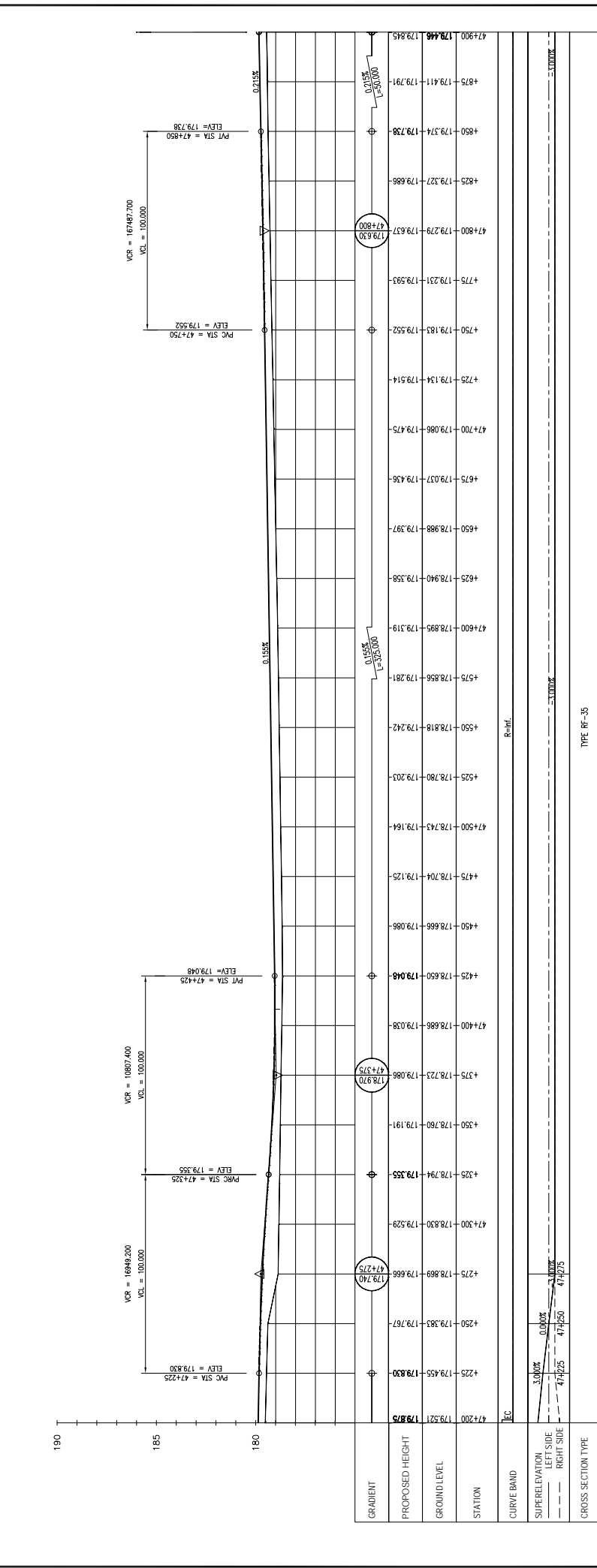
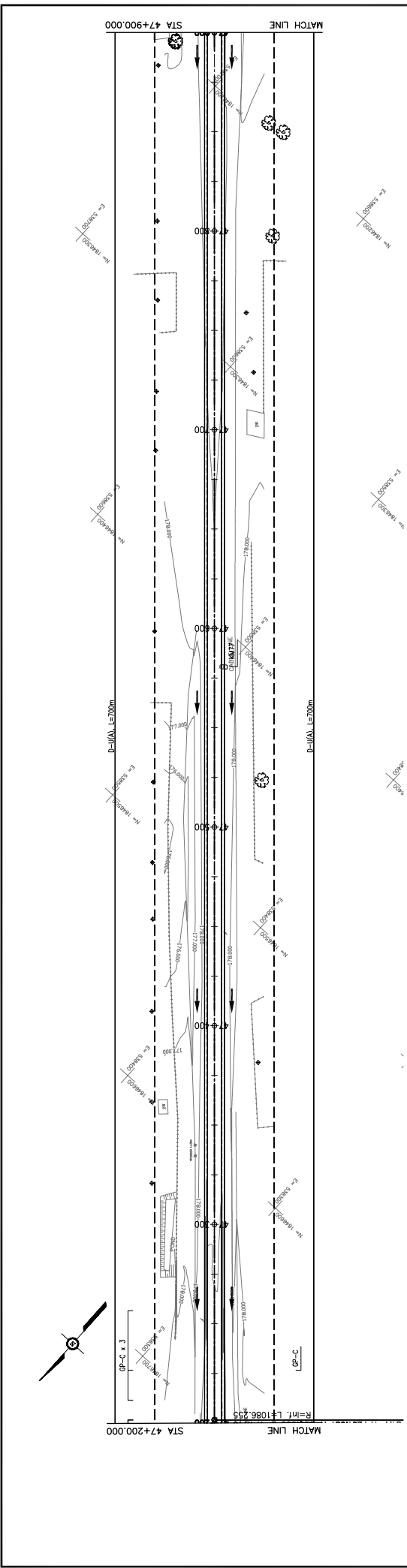
JAPAN INTERNATIONAL COOPERATION AGENCY
 THE CONSORTIUM OF
 ORIENTAL CONSULTANTS CO., LTD.
 INTERNATIONAL DEVELOPMENT CENTER OF JAPAN

MINISTRY OF PUBLIC WORKS AND TRANSPORT
 LAO PEOPLE'S DEMOCRATIC REPUBLIC

THE PROJECT FOR IMPROVEMENT OF NATIONAL ROAD No.9
 AS EAST-WEST ECONOMIC CORRIDOR IN LAO PDR

DRAWING TITLE: PLAN & PROFILE
SECTION 1: STA 46+500 - 47+200

REV. No.	DATE	DESCRIPTION	SCALE: H=1:2,000 V=1:200
			DRAWING No. C-127



STATION	ELEVATION	PROPOSED HEIGHT	GRADIENT
47+200	179.521	179.875	
47+225	179.455	179.830	
47+250	179.383	179.787	
47+275	178.869	179.666	
47+300	178.830	179.529	
47+325	178.794	179.385	
47+350	178.760	179.191	
47+375	178.723	179.086	
47+400	178.686	179.038	
47+425	178.650	179.048	
47+450	178.666	179.086	
47+475	178.704	179.125	
47+500	178.743	179.164	
47+525	178.780	179.203	
47+550	178.818	179.242	
47+575	178.856	179.281	
47+600	178.895	179.319	
47+625	178.940	179.358	
47+650	178.988	179.397	
47+675	179.037	179.436	
47+700	179.086	179.475	
47+725	179.134	179.514	
47+750	179.183	179.552	
47+775	179.231	179.593	
47+800	179.279	179.637	
47+825	179.327	179.686	
47+850	179.374	179.738	
47+875	179.411	179.791	
47+900	179.448	179.845	

**THE PROJECT FOR IMPROVEMENT OF NATIONAL ROAD No.9
AS EAST-WEST ECONOMIC CORRIDOR IN LAO PDR**

**MINISTRY OF PUBLIC WORKS AND TRANSPORT
LAO PEOPLE'S DEMOCRATIC REPUBLIC**

**PLAN & PROFILE
SECTION 1: STA 47+200 - 47+900**

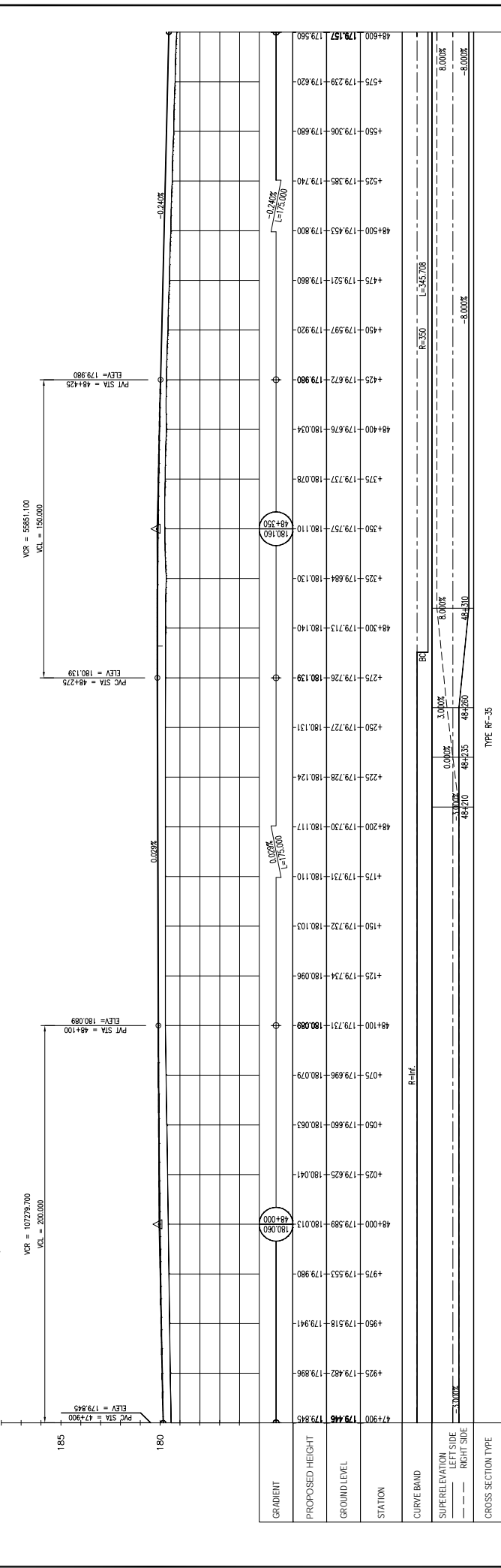
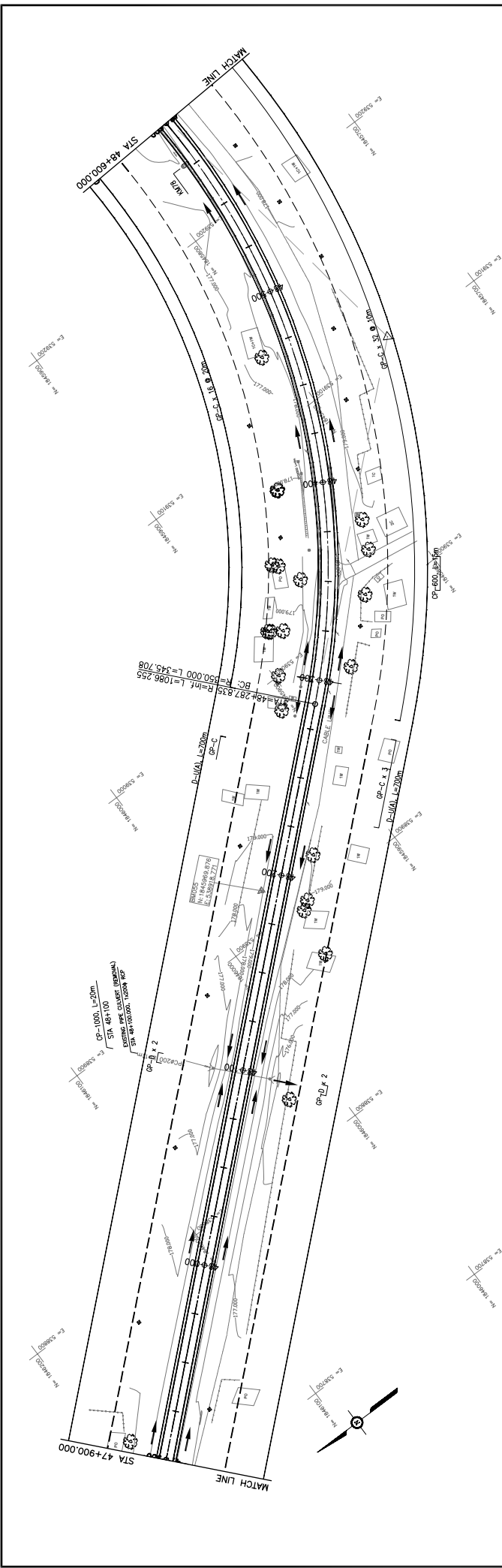
DRAWING TITLE

TYPE: RP-35

SCALE: H=1:2,000 V=1:200	DESCRIPTION	DATE	REV. No.
DRAWING No. C-128			

TITLE	NAME	SIGNATURE
PREPARED BY		
CHECKED BY		
APPROVED BY		

JAPAN INTERNATIONAL COOPERATION AGENCY
 THE CONSORTIUM OF
 ORIENTAL CONSULTANTS CO., LTD.
 INTERNATIONAL DEVELOPMENT CENTER OF JAPAN



STATION	PROPOSED HEIGHT	GROUND LEVEL	GRADIENT
47+900	179.445	179.845	
49+000	179.553	179.980	
49+100	179.625	180.041	
49+200	179.689	180.083	
49+300	179.731	180.089	
49+400	179.751	180.096	
49+500	179.754	180.103	
49+600	179.732	180.105	
49+700	179.727	180.110	
49+800	179.728	180.117	
49+900	179.728	180.124	
50+000	179.727	180.131	
50+100	179.726	180.139	
50+200	179.726	180.146	
50+300	179.713	180.150	
50+400	179.684	180.150	
50+500	179.657	180.140	
50+600	179.621	180.130	
50+700	179.579	180.120	
50+800	179.521	180.110	
50+900	179.453	180.100	
51+000	179.385	180.090	
51+100	179.308	180.080	
51+200	179.239	180.070	
51+300	179.172	180.060	
51+400	179.105	180.050	
51+500	179.038	180.040	
51+600	178.971	180.030	
51+700	178.904	180.020	
51+800	178.837	180.010	
51+900	178.770	180.000	
52+000	178.703	180.000	
52+100	178.636	180.000	
52+200	178.569	180.000	
52+300	178.502	180.000	
52+400	178.435	180.000	
52+500	178.368	180.000	
52+600	178.301	180.000	
52+700	178.234	180.000	
52+800	178.167	180.000	
52+900	178.100	180.000	
53+000	178.033	180.000	
53+100	177.966	180.000	
53+200	177.899	180.000	
53+300	177.832	180.000	
53+400	177.765	180.000	
53+500	177.698	180.000	
53+600	177.631	180.000	
53+700	177.564	180.000	
53+800	177.497	180.000	
53+900	177.430	180.000	
54+000	177.363	180.000	
54+100	177.296	180.000	
54+200	177.229	180.000	
54+300	177.162	180.000	
54+400	177.095	180.000	
54+500	177.028	180.000	
54+600	176.961	180.000	
54+700	176.894	180.000	
54+800	176.827	180.000	
54+900	176.760	180.000	
55+000	176.693	180.000	
55+100	176.626	180.000	
55+200	176.559	180.000	
55+300	176.492	180.000	
55+400	176.425	180.000	
55+500	176.358	180.000	
55+600	176.291	180.000	
55+700	176.224	180.000	
55+800	176.157	180.000	
55+900	176.090	180.000	

MINISTRY OF PUBLIC WORKS AND TRANSPORT
LAO PEOPLE'S DEMOCRATIC REPUBLIC

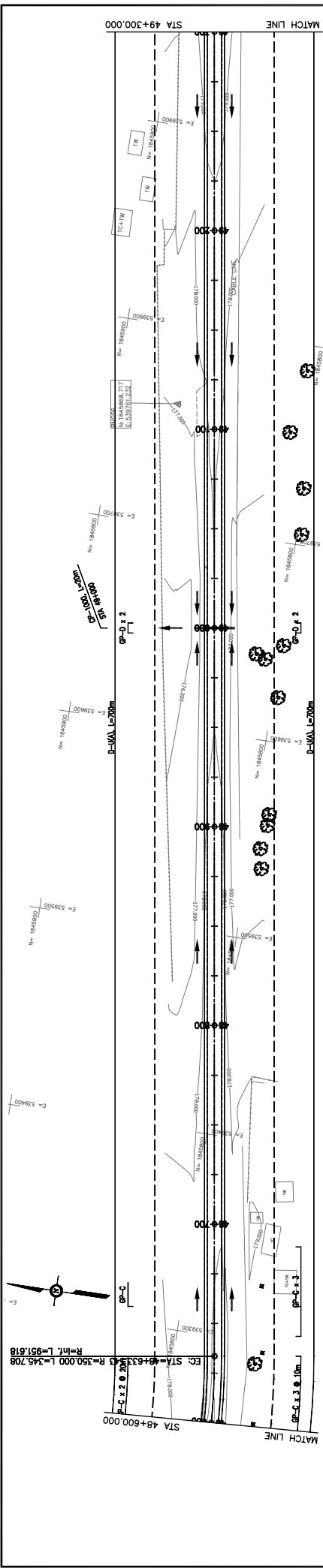
JAPAN INTERNATIONAL COOPERATION AGENCY
 THE CONSORTIUM OF
ORIENTAL CONSULTANTS CO., LTD.
 INTERNATIONAL DEVELOPMENT CENTER OF JAPAN

THE PROJECT FOR IMPROVEMENT OF NATIONAL ROAD No.9
AS EAST-WEST ECONOMIC CORRIDOR IN LAO PDR

PLAN & PROFILE
SECTION 1: STA 47+900 - 48+600

REV. NO.	DATE	DESCRIPTION
1		
2		
3		
4		
5		

SCALE: H=1:2,000
 V=1:200
 DRAWING NO. C-129



JAPAN INTERNATIONAL COOPERATION AGENCY
 THE CONSORTIUM OF
ORIENTAL CONSULTANTS CO., LTD.
 INTERNATIONAL DEVELOPMENT CENTER OF JAPAN

MINISTRY OF PUBLIC WORKS AND TRANSPORT
LAO PEOPLE'S DEMOCRATIC REPUBLIC

THE PROJECT FOR IMPROVEMENT OF NATIONAL ROAD No.9
AS EAST-WEST ECONOMIC CORRIDOR IN LAO PDR

PLAN & PROFILE
SECTION 1: STA 48+600 - 49+300

DRAWING TITLE: _____
 DRAWING NO.: _____
 SCALE: H=1:2,000
 V=1:200
 DATE: _____
 REVISED: _____
 CHECKED BY: _____
 APPROVED BY: _____
 SIGNATURE: _____
 NAME: _____
 TITLE: _____

TYPE: RF-35
 DRAWING NO.: **C-130**