

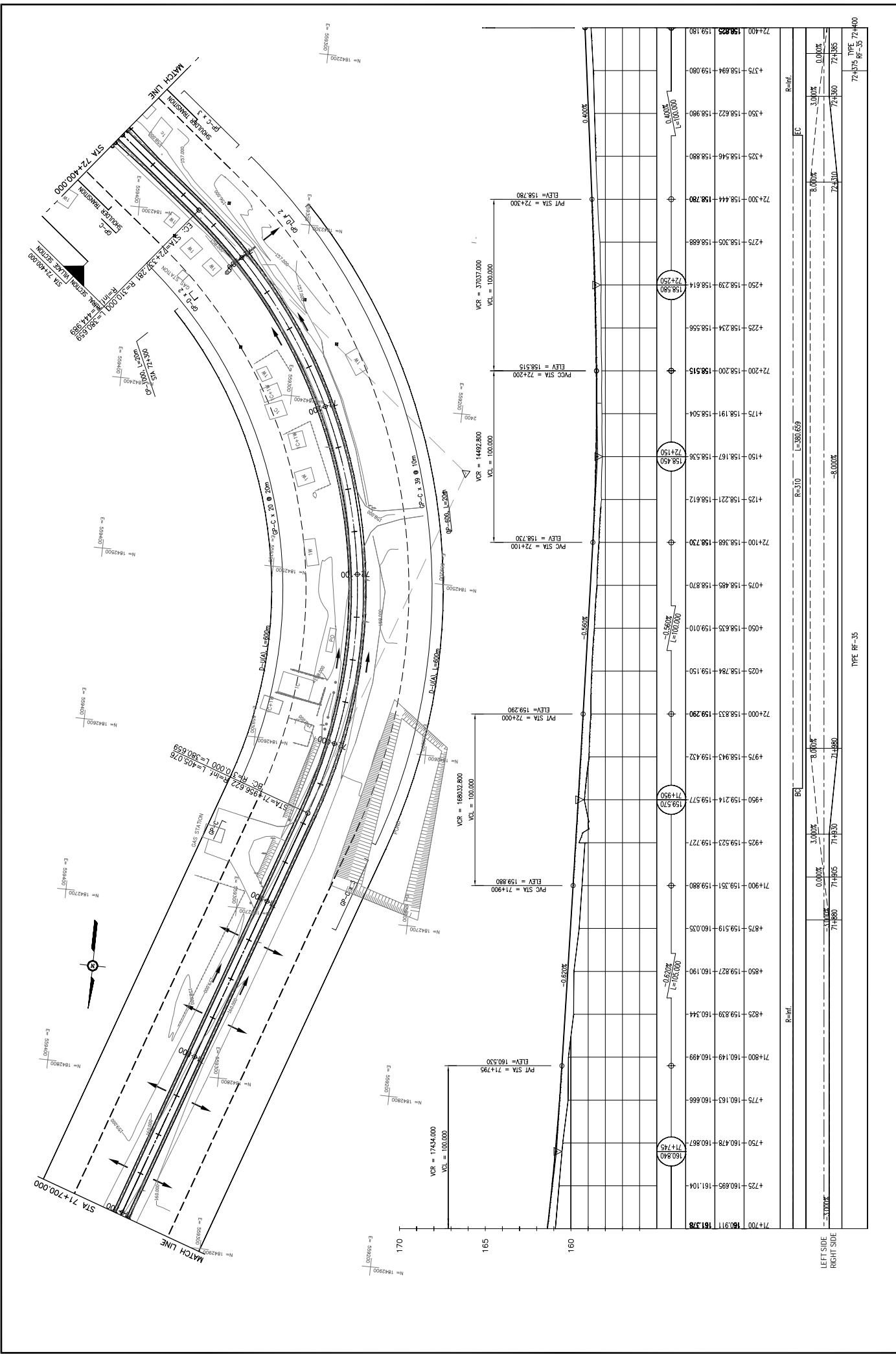
REV. No.	DATE	DESCRIPTION

SCALE:	H=1:2,000
	V=1:200
DRAWING No.	C-162

THE PROJECT FOR IMPROVEMENT OF NATIONAL ROAD No.9 AS EAST-WEST ECONOMIC CORRIDOR IN LAO PDR	MINISTRY OF PUBLIC WORKS AND TRANSPORT LAO PEOPLE'S DEMOCRATIC REPUBLIC
DRAWING TITLE	PLAN & PROFILE
	SECTION 1: STA 71+000 - 71+700

TITLE	SIGNATURE
PREPARED BY	
CHECKED BY	
APPROVED BY	

JAPAN INTERNATIONAL COOPERATION AGENCY	THE CONSORTIUM OF ORIENTAL CONSULTANTS CO., LTD.
JICA	INTERNATIONAL DEVELOPMENT CENTER OF JAPAN



PLAN & PROFILE
SECTION 1: STA 71+700 - 72+400

MINISTRY OF PUBLIC WORKS AND TRANSPORT
LAO PEOPLE'S DEMOCRATIC REPUBLIC

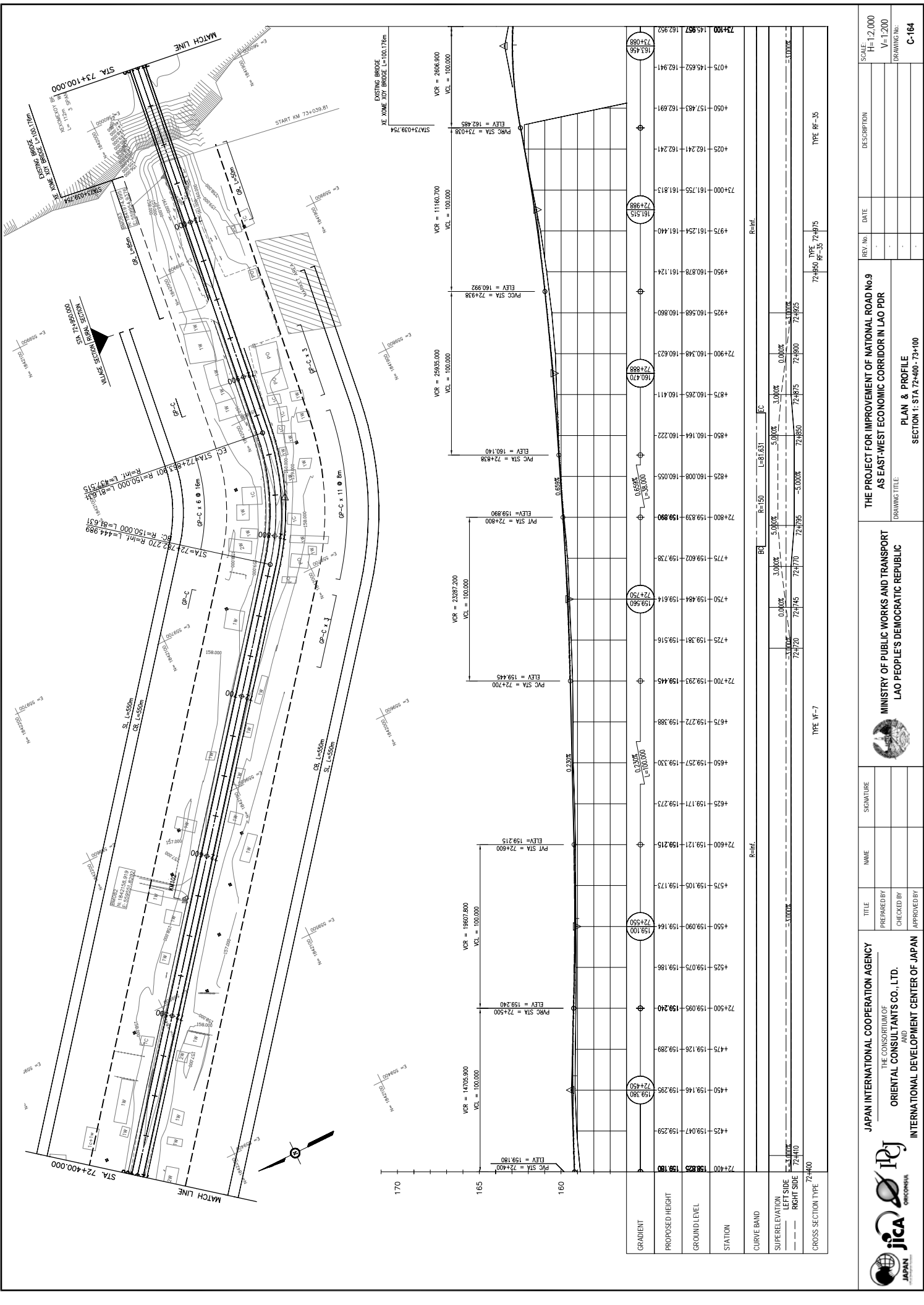
JAPAN INTERNATIONAL COOPERATION AGENCY
THE CONSORTIUM OF
ORIENTAL CONSULTANTS CO., LTD.
INTERNATIONAL DEVELOPMENT CENTER OF JAPAN

THE PROJECT FOR IMPROVEMENT OF NATIONAL ROAD No.9
AS EAST-WEST ECONOMIC CORRIDOR IN LAO PDR

REV. No.	DATE	DESCRIPTION

SCALE: H=1:2,000
V=1:200
DRAWING No. C-163

TYPE: RF-35



JAPAN INTERNATIONAL COOPERATION AGENCY
 THE CONSORTIUM OF
ORIENTAL CONSULTANTS CO., LTD.
 INTERNATIONAL DEVELOPMENT CENTER OF JAPAN

MINISTRY OF PUBLIC WORKS AND TRANSPORT
 LAO PEOPLE'S DEMOCRATIC REPUBLIC

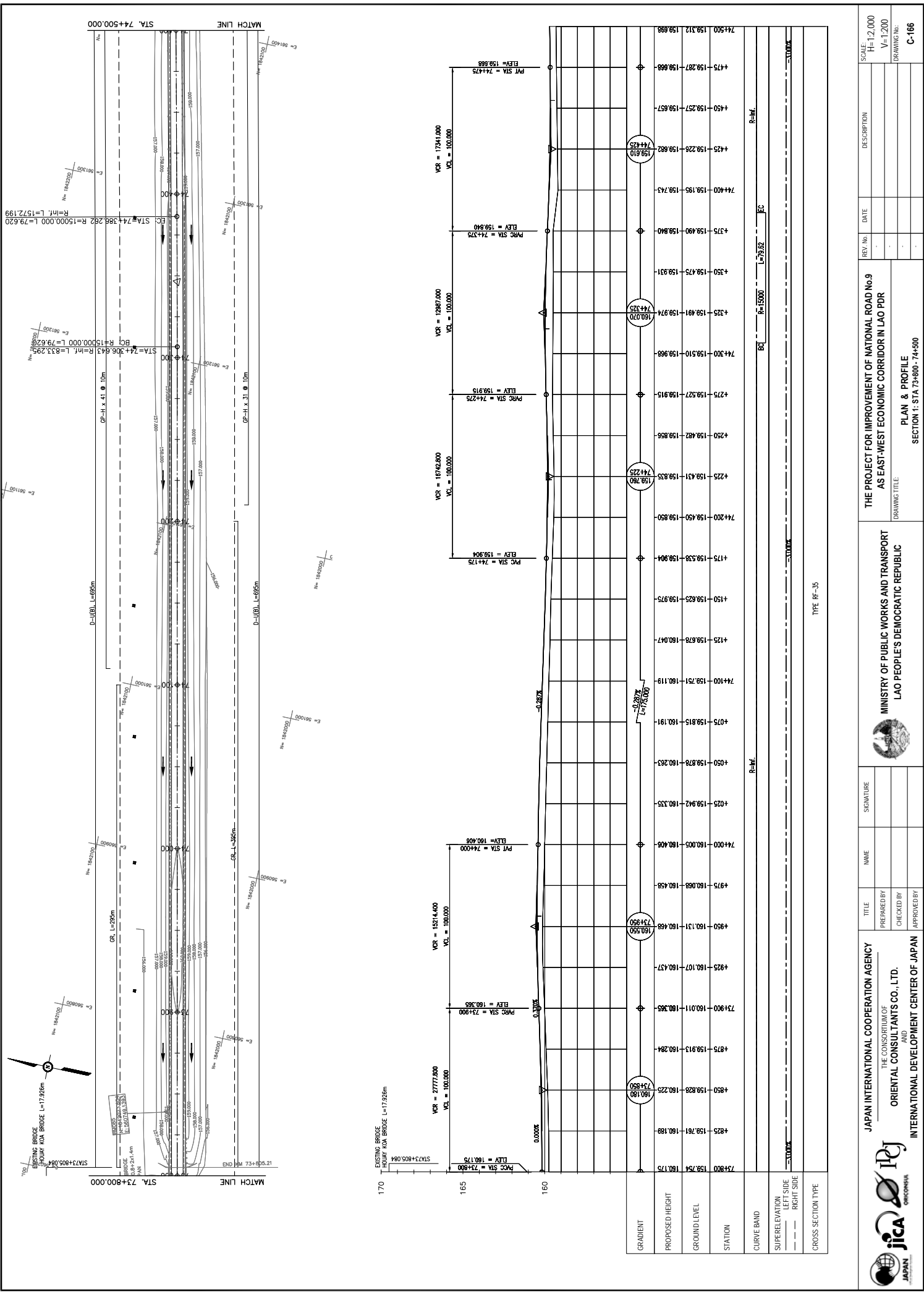
THE PROJECT FOR IMPROVEMENT OF NATIONAL ROAD No.9
 AS EAST-WEST ECONOMIC CORRIDOR IN LAO PDR

PLAN & PROFILE
 SECTION 1: STA 72+400 - 73+100

REV. No.	DATE	DESCRIPTION
1		
2		
3		
4		
5		
6		
7		
8		
9		
10		
11		
12		
13		
14		
15		
16		
17		
18		
19		
20		
21		
22		
23		
24		
25		
26		
27		
28		
29		
30		
31		
32		
33		
34		
35		
36		
37		
38		
39		
40		
41		
42		
43		
44		
45		
46		
47		
48		
49		
50		
51		
52		
53		
54		
55		
56		
57		
58		
59		
60		
61		
62		
63		
64		
65		
66		
67		
68		
69		
70		
71		
72		
73		
74		
75		
76		
77		
78		
79		
80		
81		
82		
83		
84		
85		
86		
87		
88		
89		
90		
91		
92		
93		
94		
95		
96		
97		
98		
99		
100		

SCALE: H=1:2,000
V=1:200

DRAWING No. C-164



REV. No.	DATE	DESCRIPTION	SCALE:
1			H=1:2,000
2			V=1:200

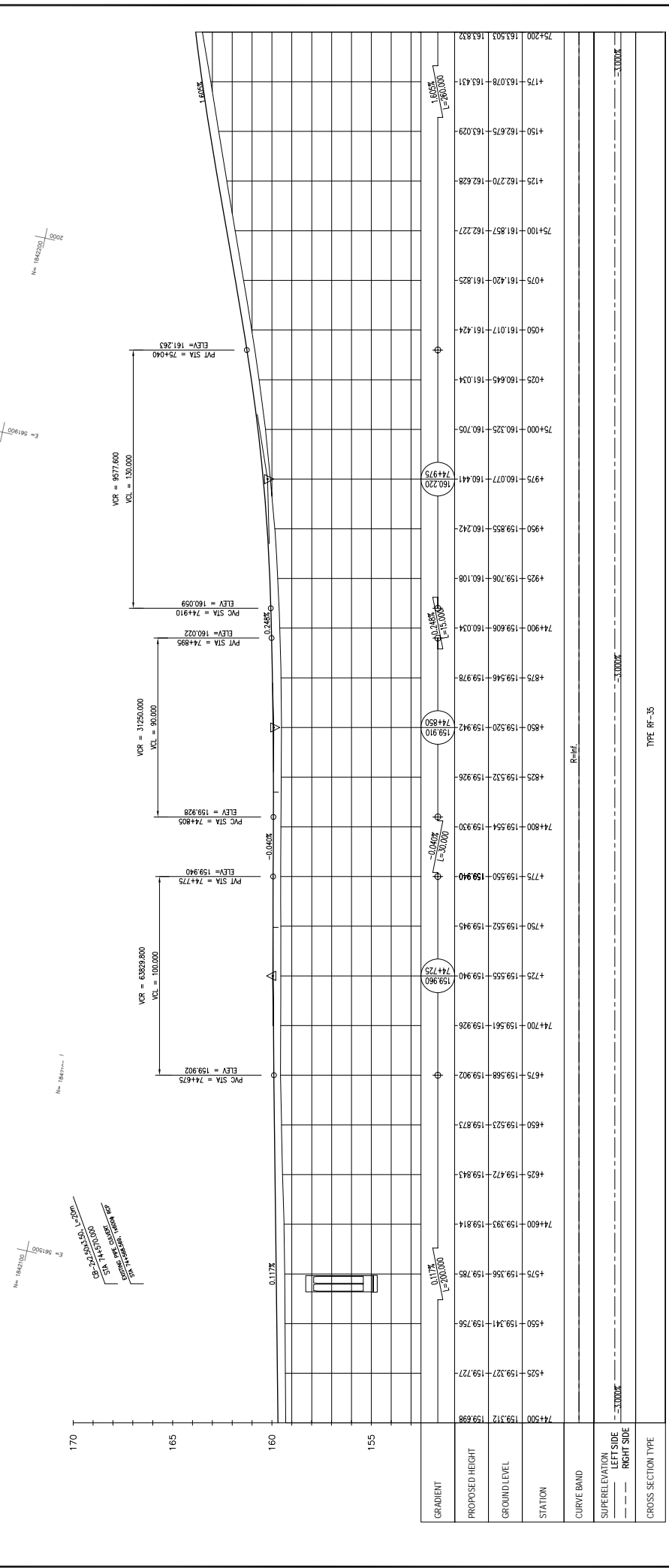
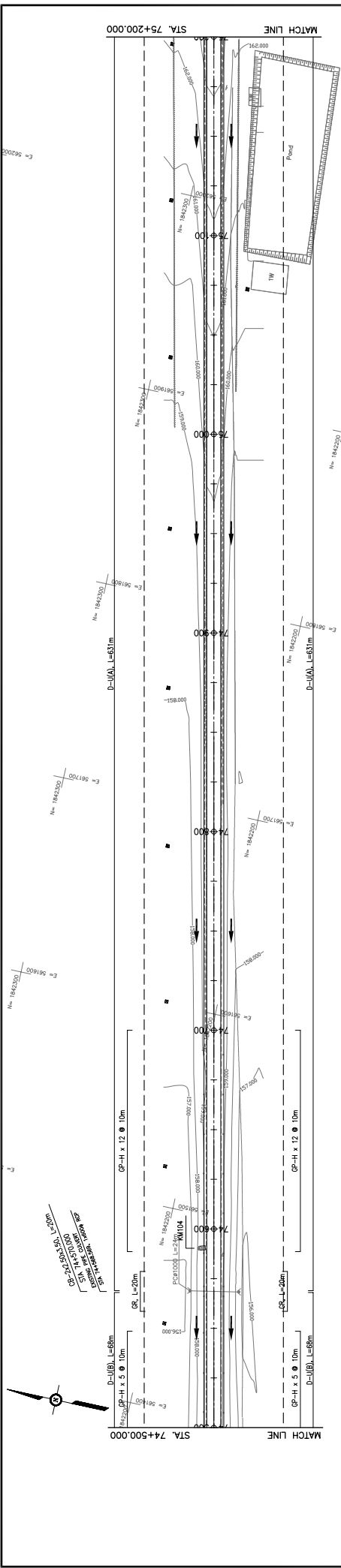
THE PROJECT FOR IMPROVEMENT OF NATIONAL ROAD No.9 AS EAST-WEST ECONOMIC CORRIDOR IN LAO PDR	
DRAWING TITLE PLAN & PROFILE SECTION 1: STA 73+800 - 74+500	

JAPAN INTERNATIONAL COOPERATION AGENCY THE CONSORTIUM OF ORIENTAL CONSULTANTS CO., LTD. INTERNATIONAL DEVELOPMENT CENTER OF JAPAN		MINISTRY OF PUBLIC WORKS AND TRANSPORT LAO PEOPLE'S DEMOCRATIC REPUBLIC	
TITLE	NAME	SIGNATURE	
PREPARED BY			
CHECKED BY			
APPROVED BY			

STATION	PROPOSED HEIGHT	GROUND LEVEL
73+800	159.754	160.175
+825	159.761	160.189
+850	159.828	160.225
+875	159.913	160.284
73+900	160.011	160.365
+925	160.107	160.437
+950	160.131	160.468
+975	160.058	160.458
74+000	160.005	160.406
+025	159.942	160.335
+050	159.878	160.283
+075	159.815	160.191
74+100	159.751	160.119
+125	159.678	160.047
+150	159.625	159.975
+175	159.538	159.904
74+200	159.450	159.850
+225	159.431	159.835
+250	159.482	159.858
+275	159.527	159.915
74+300	159.510	159.968
+325	159.491	159.974
+350	159.475	159.931
+375	159.490	159.840
74+400	159.195	159.743
+425	159.228	159.682
+450	159.257	159.657
+475	159.287	159.688
74+500	159.312	159.698

TYPE: RP-35





GRADIENT	PROPOSED HEIGHT	GROUND LEVEL	STATION	CURVE BAND	SUPERELEVATION LEFT SIDE	SUPERELEVATION RIGHT SIDE	CROSS SECTION TYPE
0.117%	193.312	193.898	74+500				
	159.327	159.727	4+525				
	159.341	159.756	4+550				
	159.356	159.785	4+575				
	159.393	159.814	4+600				
	159.472	159.843	4+625				
	159.523	159.873	4+650				
	159.568	159.902	4+675				
	159.561	159.926	74+700				
	159.555	159.940	4+725				
	159.552	159.945	4+750				
	159.550	159.949	4+775				
	159.554	159.930	74+800				
	159.532	159.926	4+825				
	159.520	159.942	4+850				
	159.546	159.978	4+875				
	159.606	160.034	74+900				
	159.706	160.108	4+925				
	159.853	160.242	4+950				
	160.077	160.441	4+975				
	160.325	160.705	75+000				
	160.645	161.034	4+025				
	161.017	161.424	4+050				
	161.420	161.825	4+075				
	162.270	162.227	75+100				
	162.675	163.029	4+25				
	163.078	163.431	4+175				
	163.503	163.833	75+200				

PLAN & PROFILE
SECTION 1: STA 74+500 - 75+200

DRAWING TITLE

MINISTRY OF PUBLIC WORKS AND TRANSPORT
LAO PEOPLE'S DEMOCRATIC REPUBLIC

THE PROJECT FOR IMPROVEMENT OF NATIONAL ROAD No.9
AS EAST-WEST ECONOMIC CORRIDOR IN LAO PDR

JICA
JAPAN INTERNATIONAL COOPERATION AGENCY

THE CONSORTIUM OF
ORIENTAL CONSULTANTS CO., LTD.
INTERNATIONAL DEVELOPMENT CENTER OF JAPAN

SIGNATURE

NAME

TITLE

PREPARED BY

CHECKED BY

APPROVED BY

REV. No.

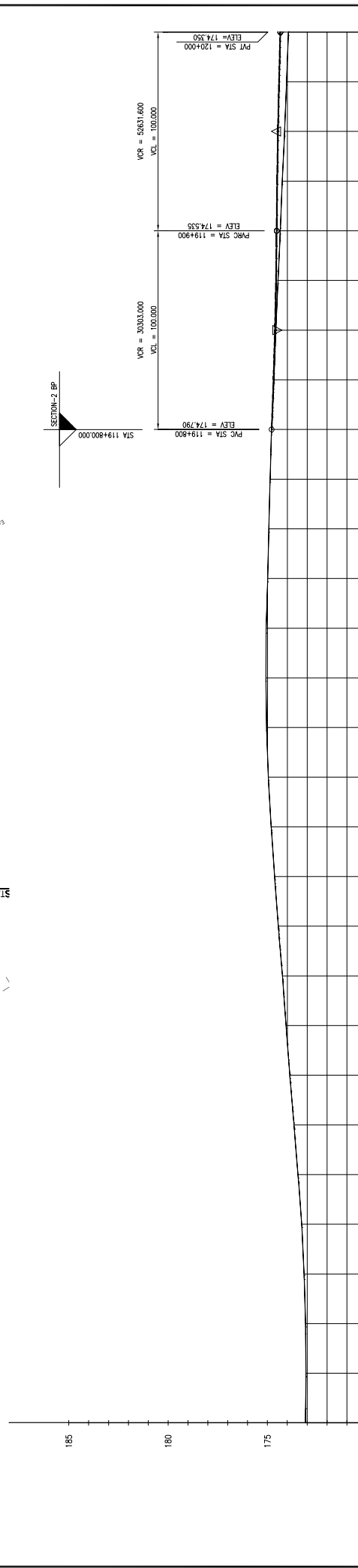
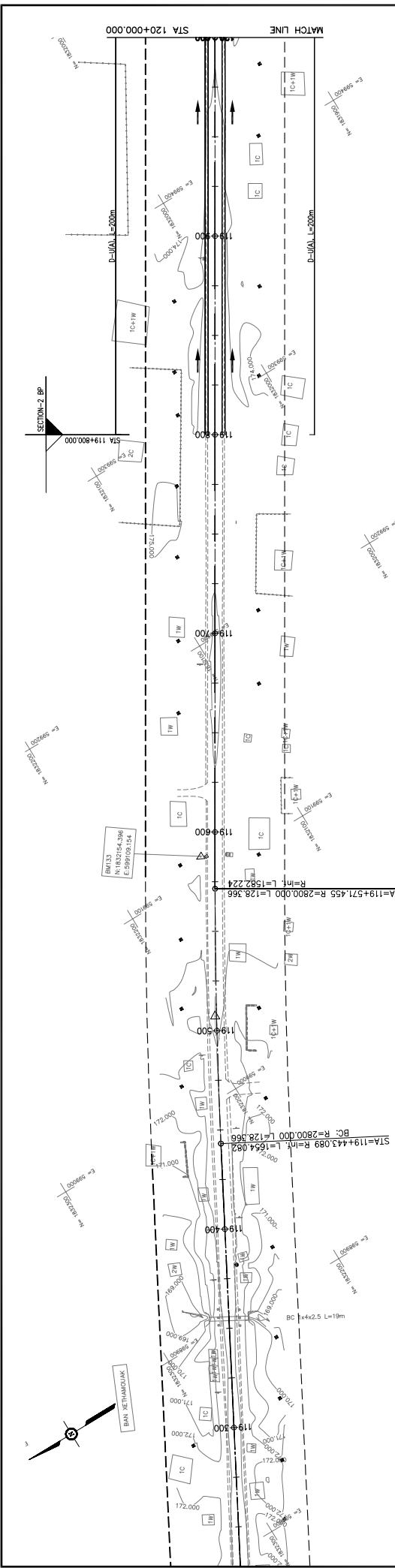
DATE

DESCRIPTION

SCALE: H=1:2,000
V=1:200

DRAWING No.

C-167



GRADIENT	PROPOSED HEIGHT	GROUND LEVEL	STATION
			119+300 173.081
			119+400 173.460
			119+425 173.460
			119+450 173.662
			119+475 173.873
			119+500 174.061
			119+525 174.244
			119+550 174.452
			119+575 174.639
			119+600 174.808
			119+625 174.954
			119+650 175.041
			119+675 175.089
			119+700 175.082
			119+725 174.986
			119+750 174.926
			119+775 174.863
			119+800 174.790
			119+825 174.673
			119+850 174.572
			119+875 174.461
			119+900 174.351
			119+925 174.249
			119+950 174.133
			119+975 174.033
			120+000 173.941

TYPE: RP-40

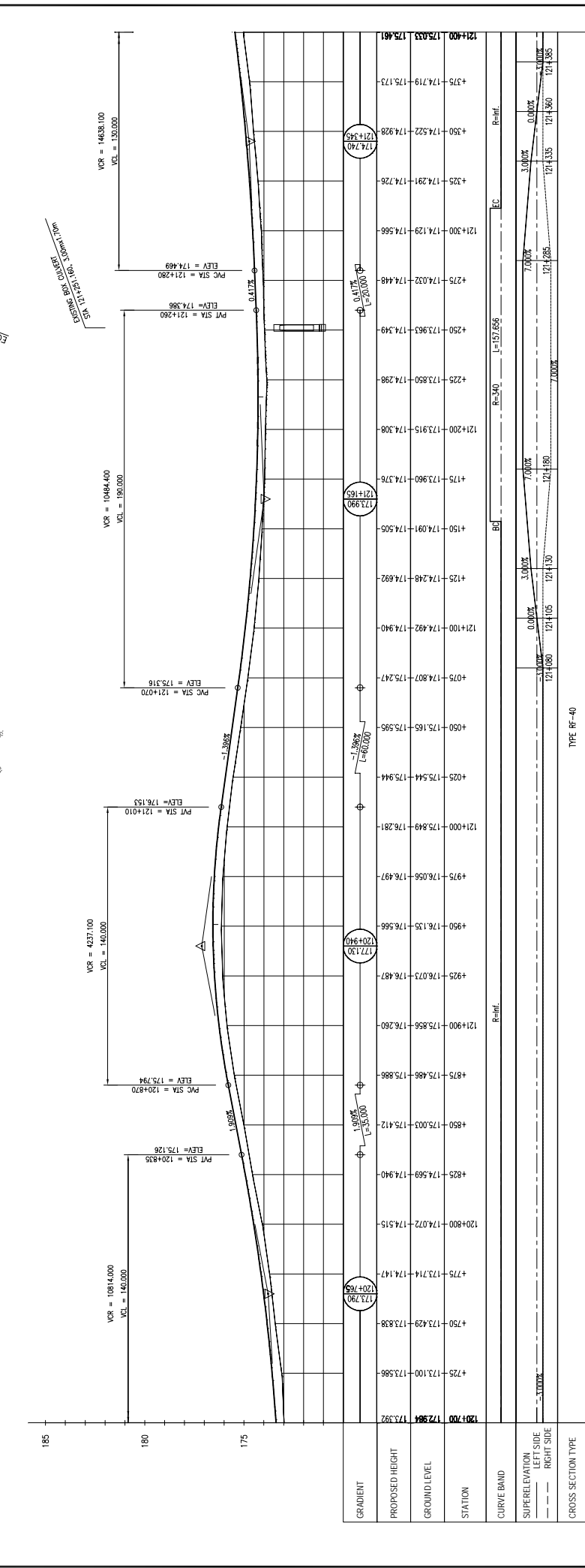
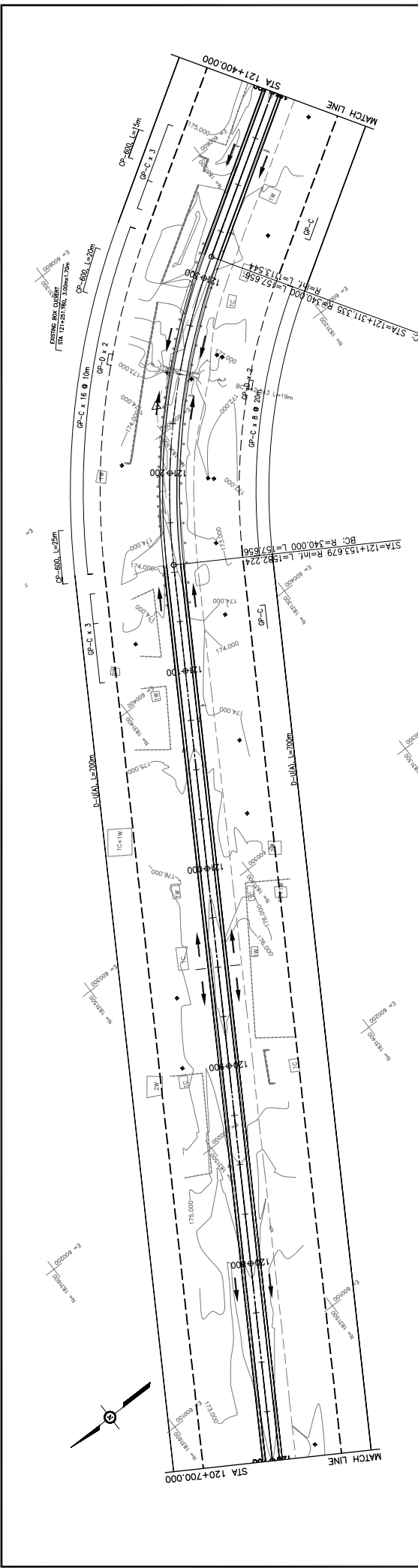
JAPAN INTERNATIONAL COOPERATION AGENCY
 THE CONSORTIUM OF
ORIENTAL CONSULTANTS CO., LTD.
 INTERNATIONAL DEVELOPMENT CENTER OF JAPAN

MINISTRY OF PUBLIC WORKS AND TRANSPORT
LAO PEOPLE'S DEMOCRATIC REPUBLIC

THE PROJECT FOR IMPROVEMENT OF NATIONAL ROAD No.9
AS EAST-WEST ECONOMIC CORRIDOR IN LAO PDR

PLAN & PROFILE
SECTION 2: STA. 119+300 - 120+000

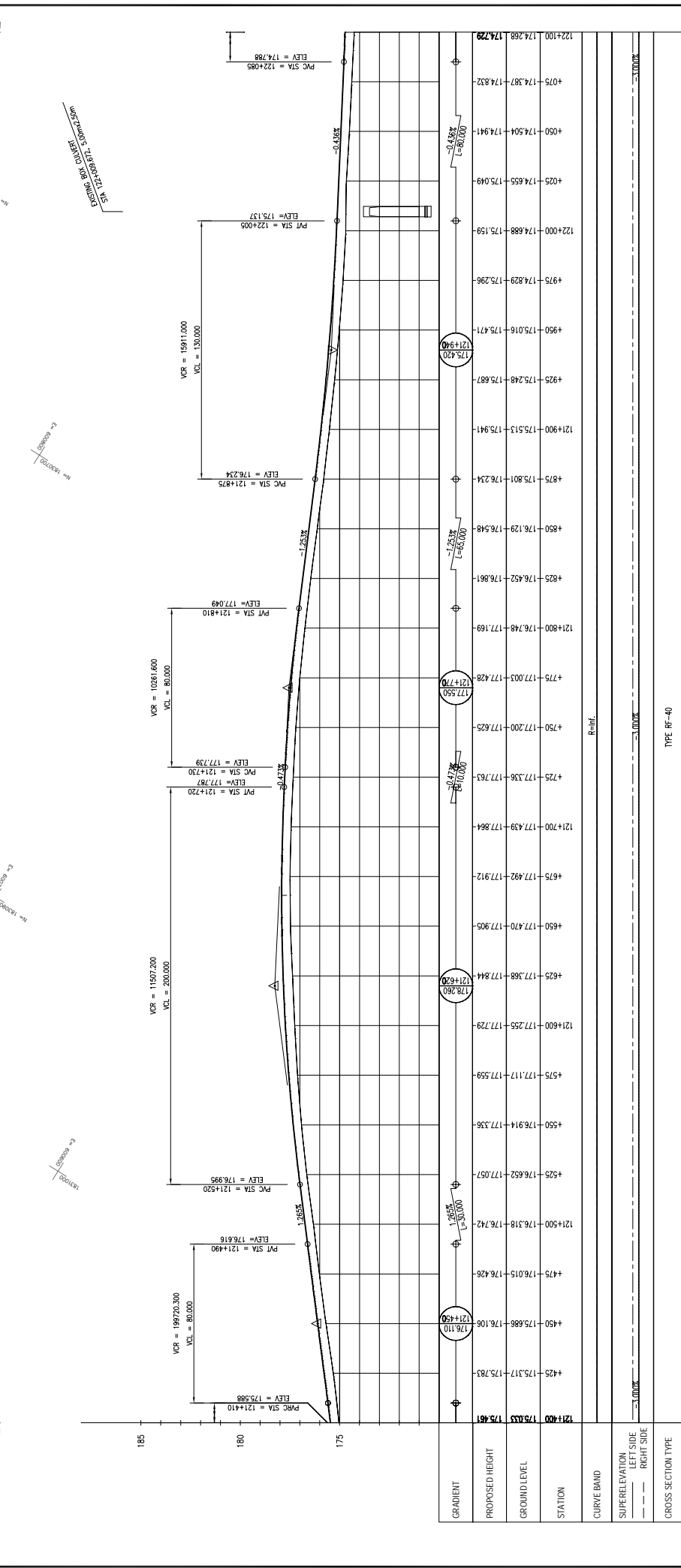
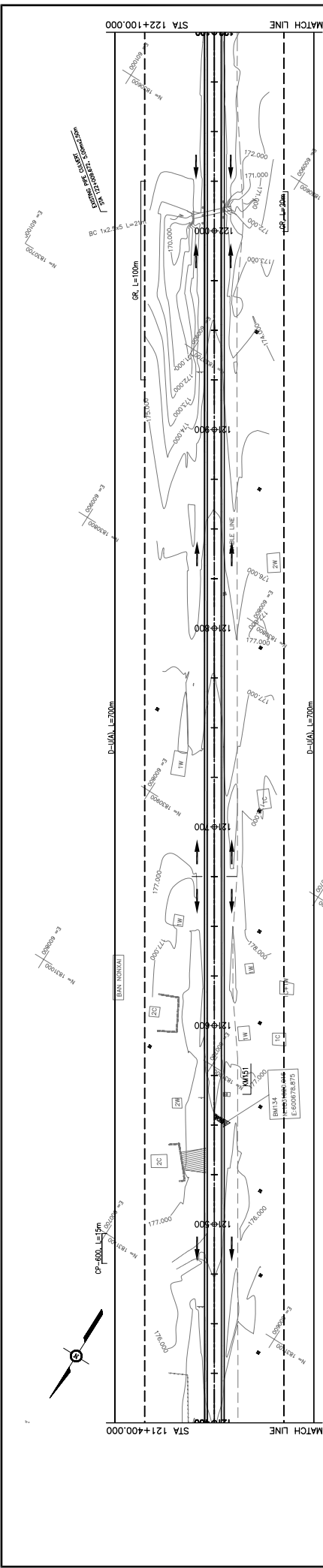
DRAWING TITLE: SECTION 2: STA. 119+300 - 120+000
 DRAWING NO.: C-201
 SCALE: H=1:2,000
 V=1:200
 DATE:
 REV. No.:
 DESCRIPTION:



STATION	PROPOSED HEIGHT	GROUND LEVEL	GRADIENT
120+700	172.984	173.392	
120+750	173.429	173.838	
120+800	174.072	174.515	
120+850	174.569	174.940	
120+900	175.003	175.412	
120+950	175.486	175.886	
121+000	175.856	176.280	
121+050	176.073	176.487	
121+100	176.135	176.566	
121+150	176.544	175.944	
121+200	175.544	175.595	
121+250	175.165	175.595	
121+300	174.807	175.247	
121+350	174.492	174.940	
121+400	174.291	174.566	
121+450	174.222	174.928	
121+500	174.719	175.173	

REV. No.	DATE	DESCRIPTION

SCALE	H=1:2,000	V=1:200



TYPE: Rf-40

MINISTRY OF PUBLIC WORKS AND TRANSPORT
LAO PEOPLE'S DEMOCRATIC REPUBLIC

JAPAN INTERNATIONAL COOPERATION AGENCY
THE CONSORTIUM OF
ORIENTAL CONSULTANTS CO., LTD.
INTERNATIONAL DEVELOPMENT CENTER OF JAPAN

THE PROJECT FOR IMPROVEMENT OF NATIONAL ROAD No.9
AS EAST-WEST ECONOMIC CORRIDOR IN LAO PDR

PLAN & PROFILE
SECTION 2: STA. 121+400 - 122+100

SCALE: H=1:2,000
V=1:200

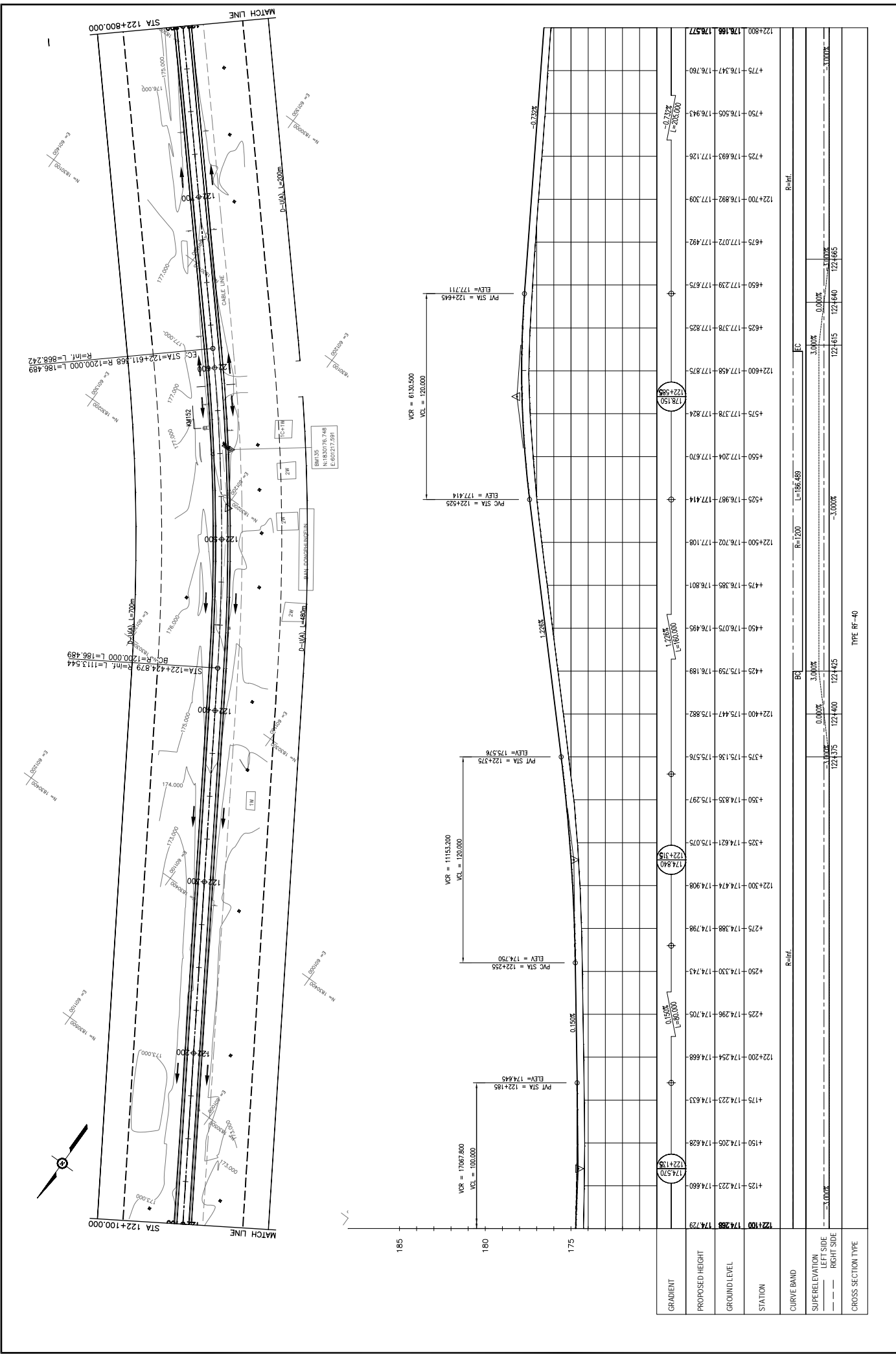
REV. No. DATE DESCRIPTION

TITLE PREPARED BY CHECKED BY APPROVED BY

SIGNATURE

NAME

DRAWING No. C-204



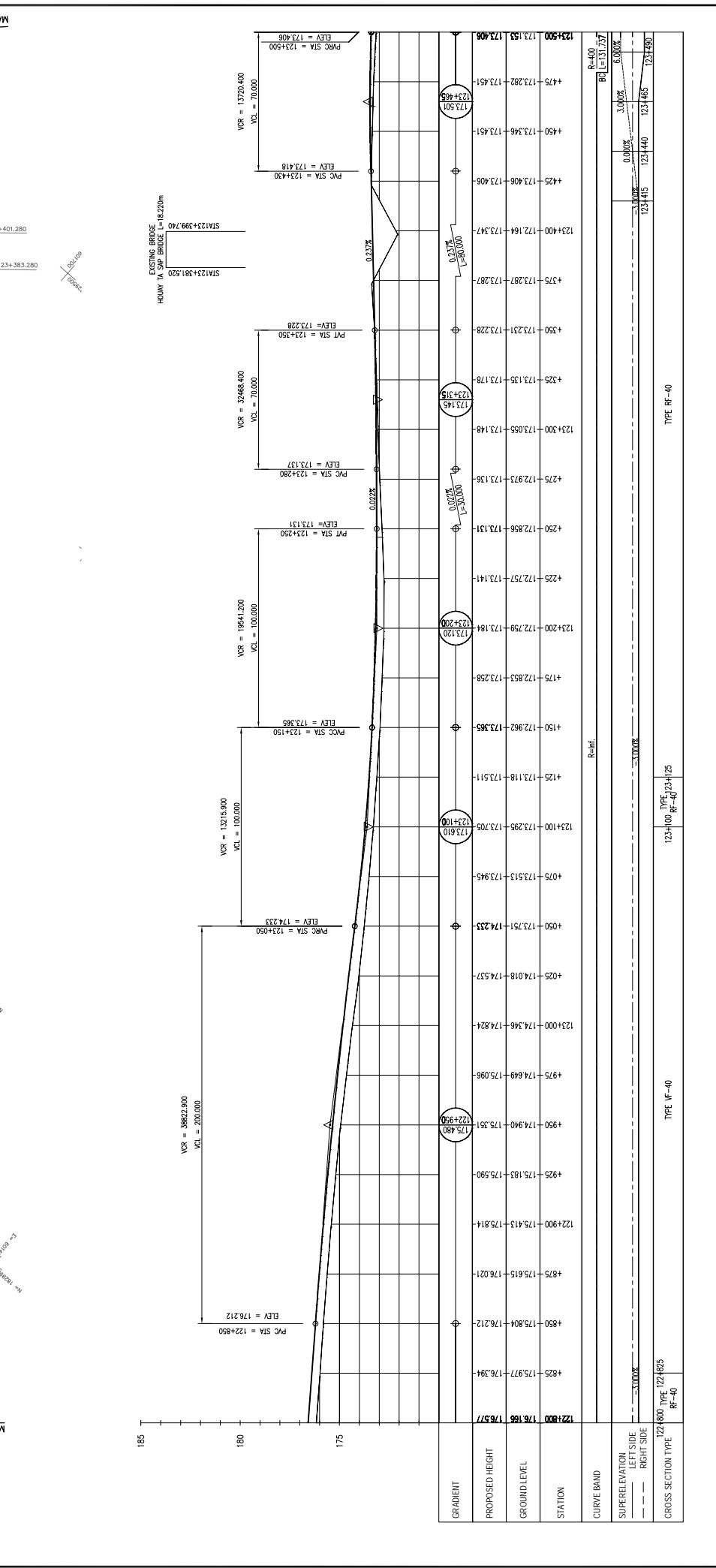
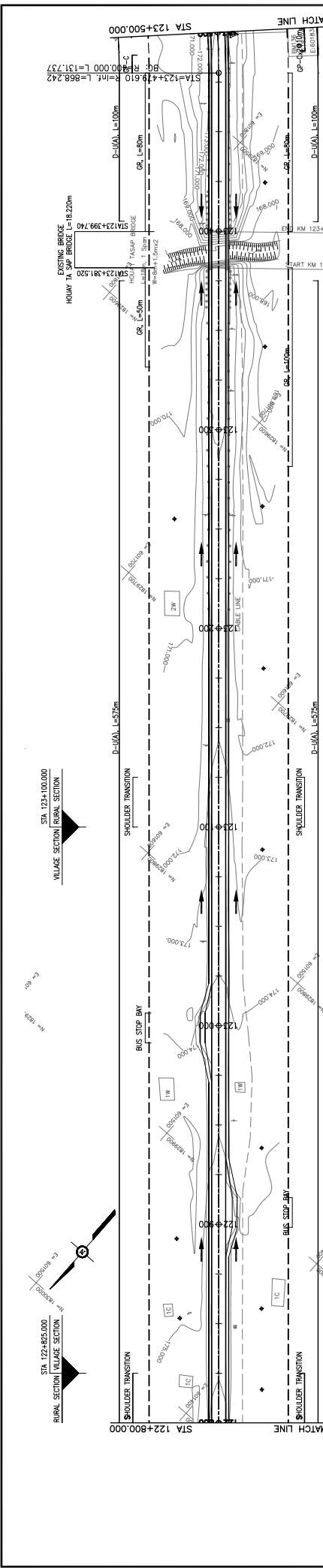
REV. No.	DATE	DESCRIPTION	SCALE
1			H=1:2,000 V=1:200
2			
3			
4			
5			

JAPAN INTERNATIONAL COOPERATION AGENCY THE CONSORTIUM OF ORIENTAL CONSULTANTS CO., LTD. INTERNATIONAL DEVELOPMENT CENTER OF JAPAN		MINISTRY OF PUBLIC WORKS AND TRANSPORT LAO PEOPLE'S DEMOCRATIC REPUBLIC		THE PROJECT FOR IMPROVEMENT OF NATIONAL ROAD No.9 AS EAST-WEST ECONOMIC CORRIDOR IN LAO PDR	
TITLE		NAME		SIGNATURE	
PREPARED BY					
CHECKED BY					
APPROVED BY					

DRAWING TITLE PLAN & PROFILE SECTION 2: STA. 122+100 - 122+800	DRAWING No. C-205
---	-----------------------------



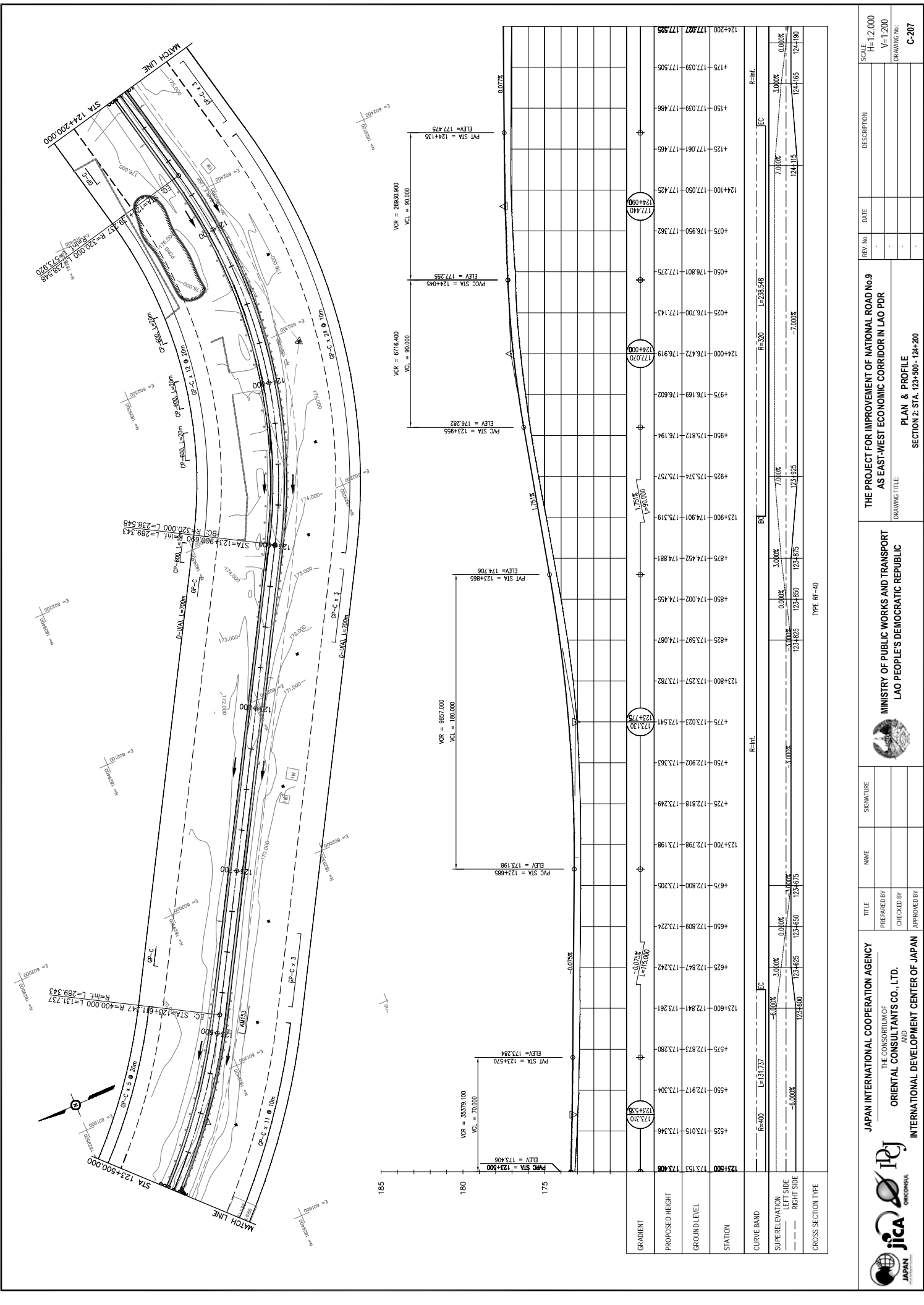
TYPE: Rf-40



REV. No.	DATE	DESCRIPTION	SCALE:
1			H=1:2,000
2			V=1:200

THE PROJECT FOR IMPROVEMENT OF NATIONAL ROAD No.9 AS EAST-WEST ECONOMIC CORRIDOR IN LAO PDR	
MINISTRY OF PUBLIC WORKS AND TRANSPORT LAO PEOPLE'S DEMOCRATIC REPUBLIC	
DRAWING TITLE SECTION 2: STA. 122+800 - 123+500	
PLAN & PROFILE	
DRAWING No. C-206	

JAPAN INTERNATIONAL COOPERATION AGENCY THE CONSORTIUM OF ORIENTAL CONSULTANTS CO., LTD. INTERNATIONAL DEVELOPMENT CENTER OF JAPAN	SIGNATURE NAME TITLE PREPARED BY CHECKED BY APPROVED BY
--	--



JAPAN INTERNATIONAL COOPERATION AGENCY
 THE CONSORTIUM OF
ORIENTAL CONSULTANTS CO., LTD.
 INTERNATIONAL DEVELOPMENT CENTER OF JAPAN

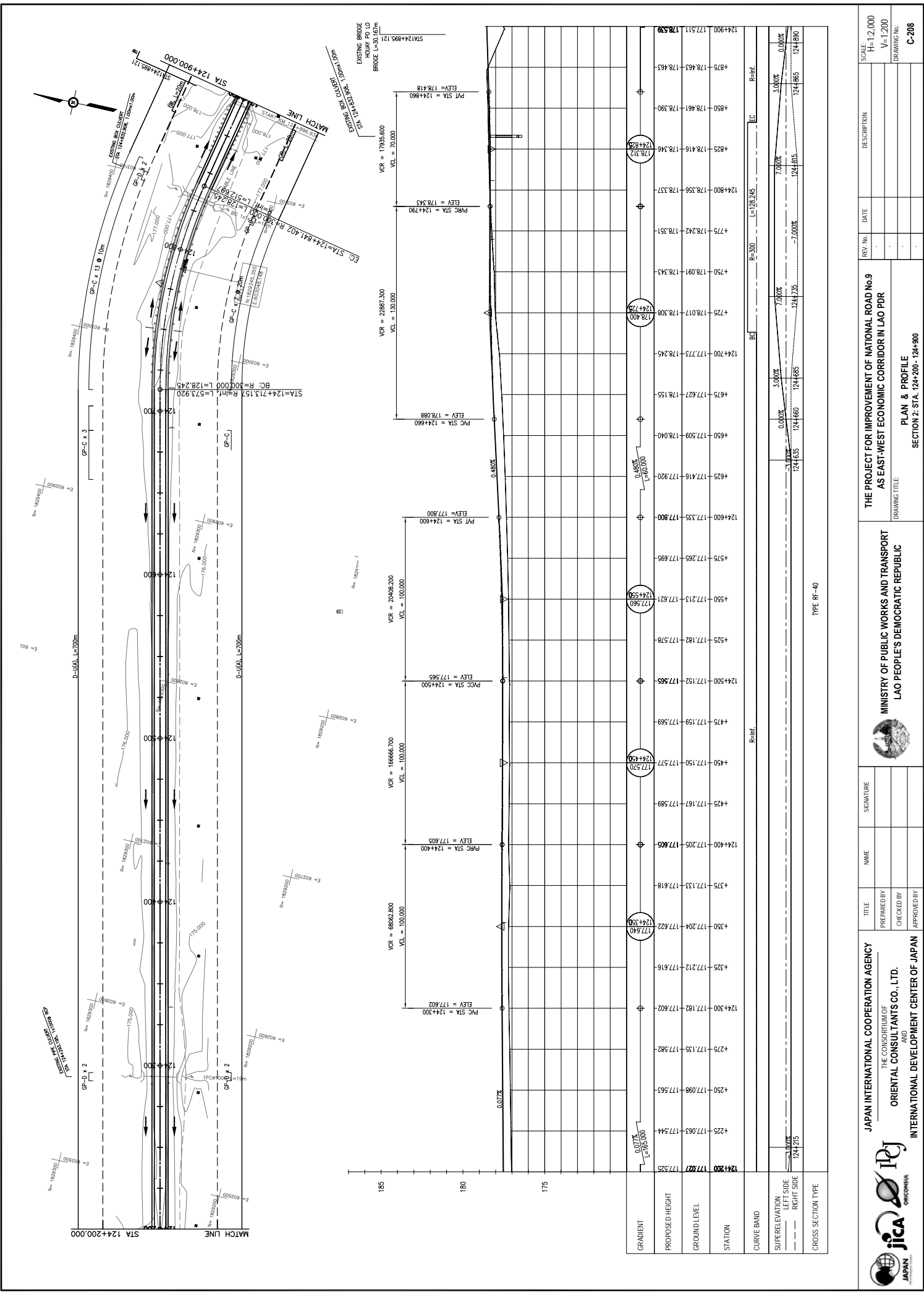
MINISTRY OF PUBLIC WORKS AND TRANSPORT
LAO PEOPLE'S DEMOCRATIC REPUBLIC

THE PROJECT FOR IMPROVEMENT OF NATIONAL ROAD No.9
AS EAST-WEST ECONOMIC CORRIDOR IN LAO PDR

PLAN & PROFILE
 SECTION 2: STA. 123+500 - 124+200

REV. No.	DATE	DESCRIPTION

SCALE: H=1:2,000
 V=1:200
 DRAWING No. C-207

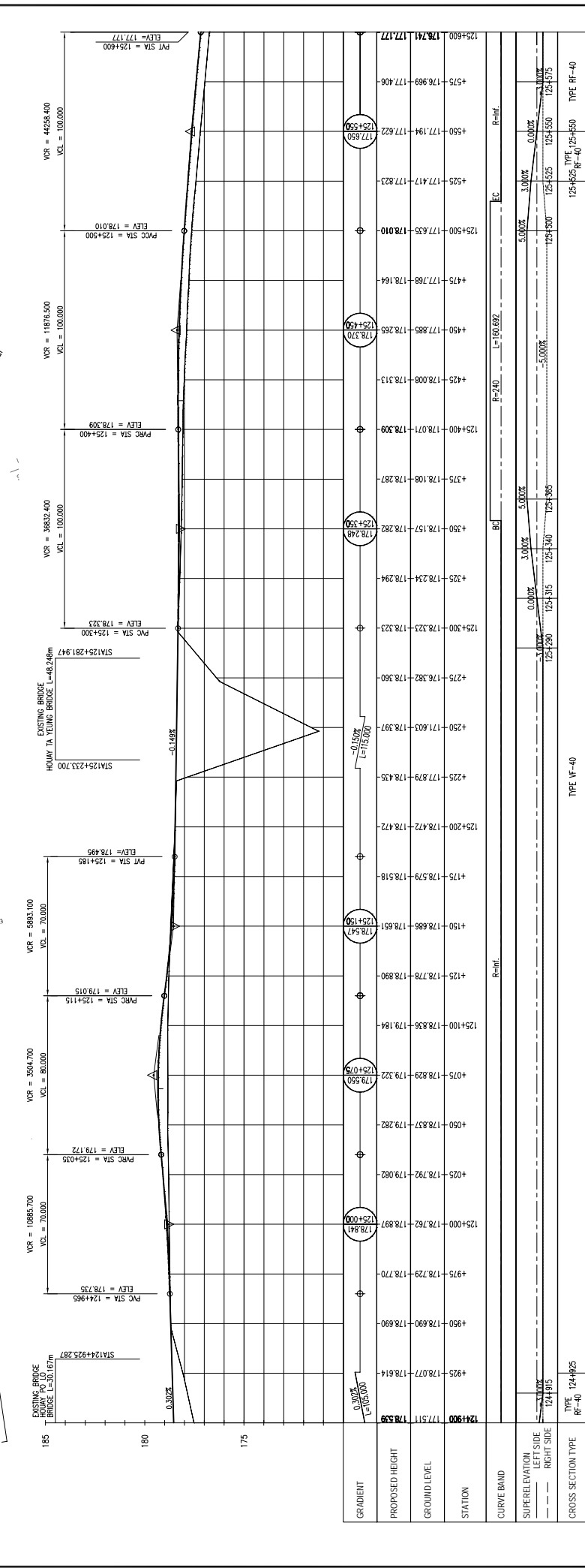
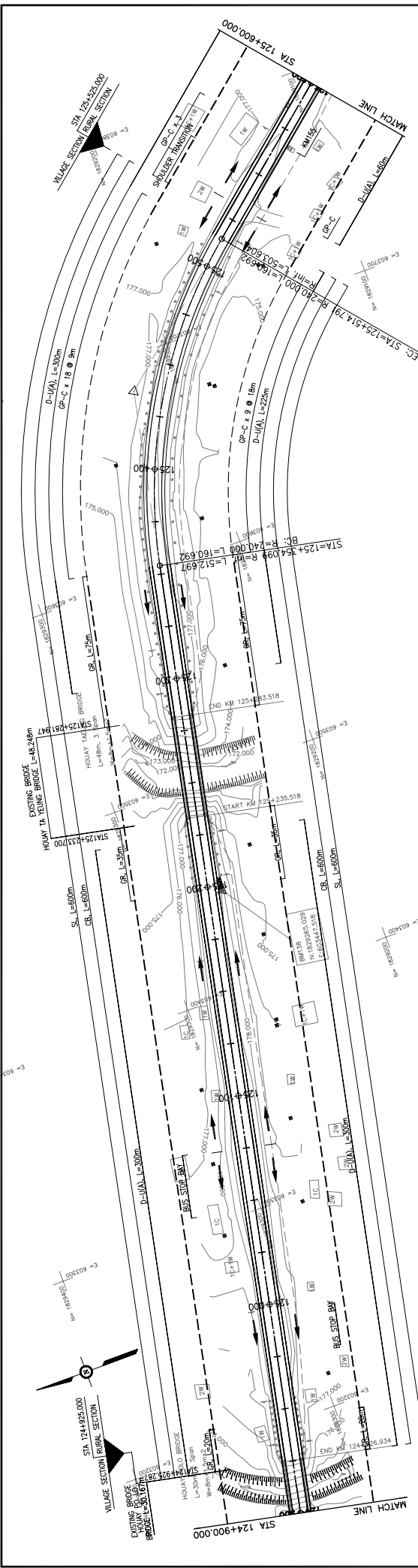


REV No.	DATE	DESCRIPTION	SCALE:
1			H=1:2,000
2			V=1:200

THE PROJECT FOR IMPROVEMENT OF NATIONAL ROAD No.9 AS EAST-WEST ECONOMIC CORRIDOR IN LAO PDR	
MINISTRY OF PUBLIC WORKS AND TRANSPORT LAO PEOPLE'S DEMOCRATIC REPUBLIC	
DRAWING TITLE PLAN & PROFILE SECTION 2: STA. 124+200 - 124+900	
DRAWING No. C-208	

TITLE	NAME	SIGNATURE
PREPARED BY		
CHECKED BY		
APPROVED BY		

JAPAN INTERNATIONAL COOPERATION AGENCY THE CONSORTIUM OF ORIENTAL CONSULTANTS CO., LTD. INTERNATIONAL DEVELOPMENT CENTER OF JAPAN	
--	--



STATION	ELEV	PROPOSED HEIGHT	GROUND LEVEL	STATION	ELEV
124+900	177.511	178.539	178.539	125+900	178.741
124+925	177.511	178.539	178.539	125+925	178.741
124+950	178.690	178.690	178.690	125+950	177.194
124+975	178.729	178.729	178.729	125+975	177.194
125+000	178.762	178.762	178.762	126+000	177.194
125+025	178.792	178.792	178.792	126+025	177.194
125+050	178.836	178.836	178.836	126+050	177.194
125+075	178.879	178.879	178.879	126+075	177.194
125+100	178.936	178.936	178.936	126+100	177.194
125+125	178.978	178.978	178.978	126+125	177.194
125+150	179.015	179.015	179.015	126+150	177.194
125+175	179.015	179.015	179.015	126+175	177.194
125+200	178.978	178.978	178.978	126+200	177.194
125+225	178.879	178.879	178.879	126+225	177.194
125+250	178.729	178.729	178.729	126+250	177.194
125+275	178.579	178.579	178.579	126+275	177.194
125+300	178.472	178.472	178.472	126+300	177.194
125+325	178.323	178.323	178.323	126+325	177.194
125+350	178.234	178.234	178.234	126+350	177.194
125+375	178.157	178.157	178.157	126+375	177.194
125+400	178.108	178.108	178.108	126+400	177.194
125+425	178.008	178.008	178.008	126+425	177.194
125+450	177.888	177.888	177.888	126+450	177.194
125+475	177.768	177.768	177.768	126+475	177.194
125+500	177.639	177.639	177.639	126+500	177.194
125+525	177.417	177.417	177.417	126+525	177.194
125+550	177.194	177.194	177.194	126+550	177.194
125+575	176.969	176.969	176.969	126+575	177.194
125+600	176.741	176.741	176.741	126+600	177.194

JAPAN INTERNATIONAL COOPERATION AGENCY
 THE CONSORTIUM OF
ORIENTAL CONSULTANTS CO., LTD.
 INTERNATIONAL DEVELOPMENT CENTER OF JAPAN

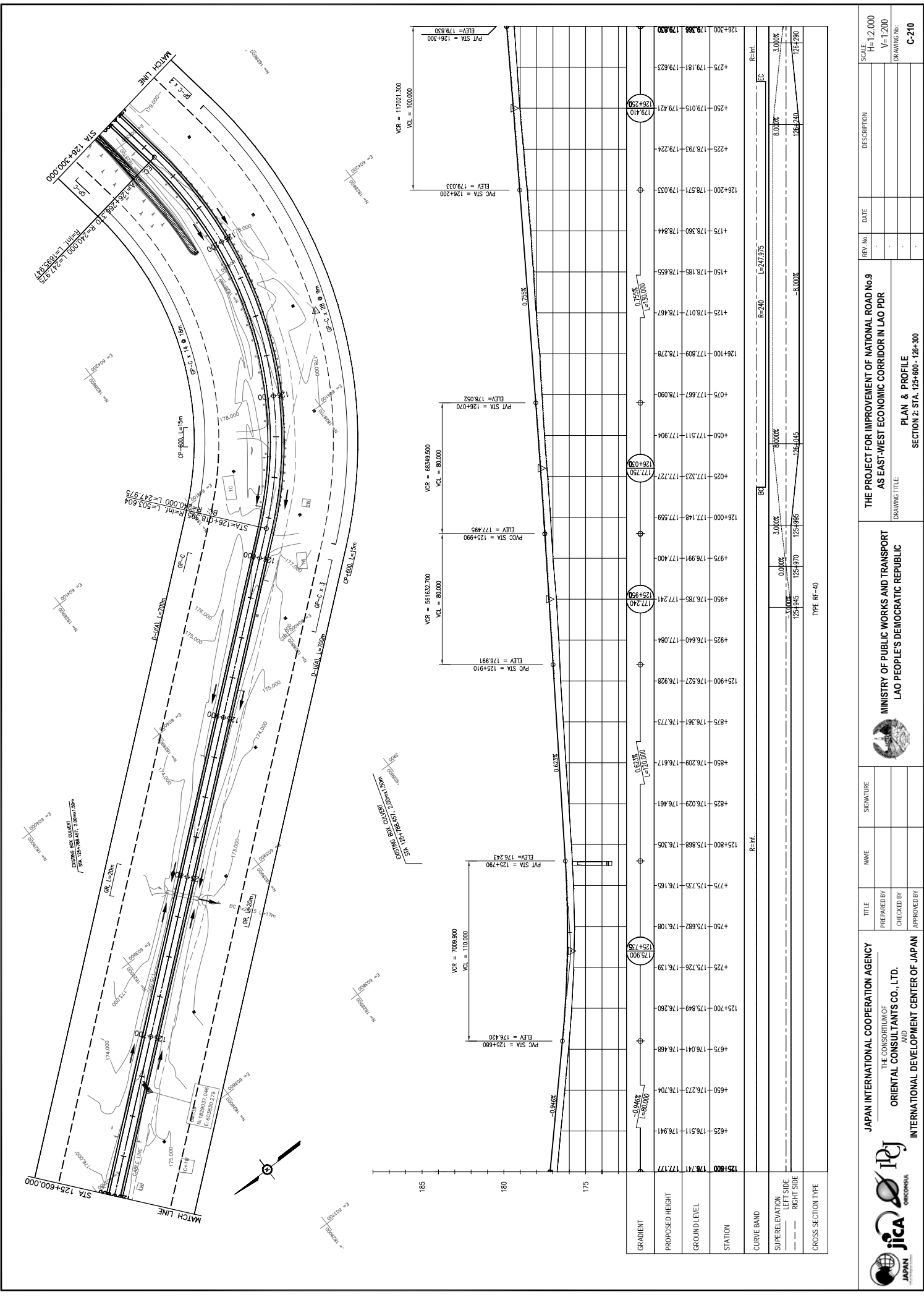
MINISTRY OF PUBLIC WORKS AND TRANSPORT
LAO PEOPLE'S DEMOCRATIC REPUBLIC

THE PROJECT FOR IMPROVEMENT OF NATIONAL ROAD No.9
AS EAST-WEST ECONOMIC CORRIDOR IN LAO PDR

PLAN & PROFILE
 SECTION 2: STA. 124+900 - 125+600

REV. No.	DATE	DESCRIPTION

SCALE: H=1:2,000
 V=1:200
 DRAWING No.: C-209

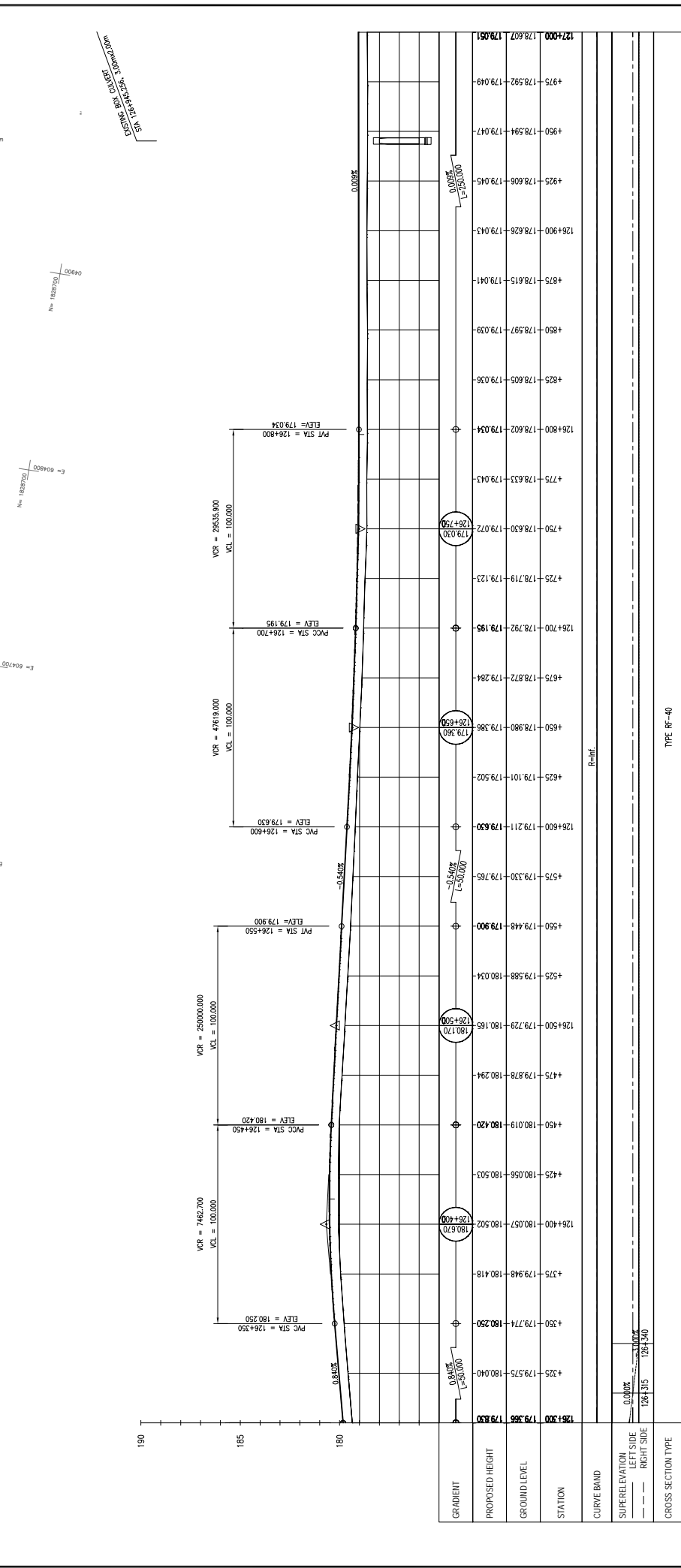
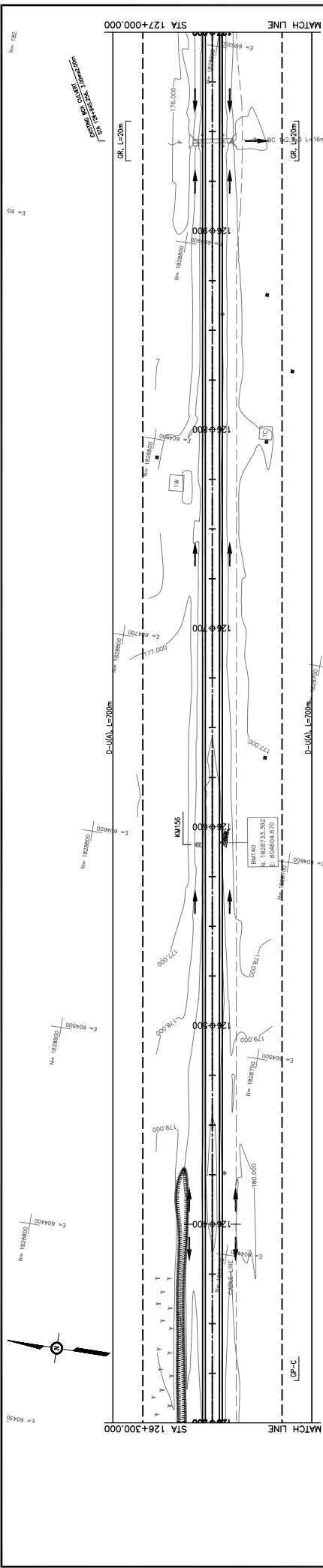


REV. No.	DATE	DESCRIPTION	SCALE:
1			H=1:2,000
2			V=1:200

THE PROJECT FOR IMPROVEMENT OF NATIONAL ROAD No.9 AS EAST-WEST ECONOMIC CORRIDOR IN LAO PDR	
MINISTRY OF PUBLIC WORKS AND TRANSPORT LAO PEOPLE'S DEMOCRATIC REPUBLIC	
DRAWING TITLE PLAN & PROFILE SECTION 2: STA. 125+600 - 126+300	
DRAWING No. C-210	

TITLE	NAME	SIGNATURE
PREPARED BY		
CHECKED BY		
APPROVED BY		

JAPAN INTERNATIONAL COOPERATION AGENCY THE CONSORTIUM OF ORIENTAL CONSULTANTS CO., LTD. INTERNATIONAL DEVELOPMENT CENTER OF JAPAN	
--	--



STATION	PROPOSED HEIGHT	GROUND LEVEL	GRADIENT
126+300	179.366	179.330	0.840%
126+400	180.570	180.502	0.008%
126+500	180.170	180.165	0.008%
126+600	179.211	179.630	0.008%
126+700	178.792	179.195	0.008%
126+800	178.602	179.034	0.008%
126+900	178.628	179.043	0.008%
127+000	178.594	179.049	0.008%

MINISTRY OF PUBLIC WORKS AND TRANSPORT
LAO PEOPLE'S DEMOCRATIC REPUBLIC

THE PROJECT FOR IMPROVEMENT OF NATIONAL ROAD No.9
AS EAST-WEST ECONOMIC CORRIDOR IN LAO PDR

DRAWING TITLE: **PLAN & PROFILE**
SECTION 2: STA. 126+300 - 127+000

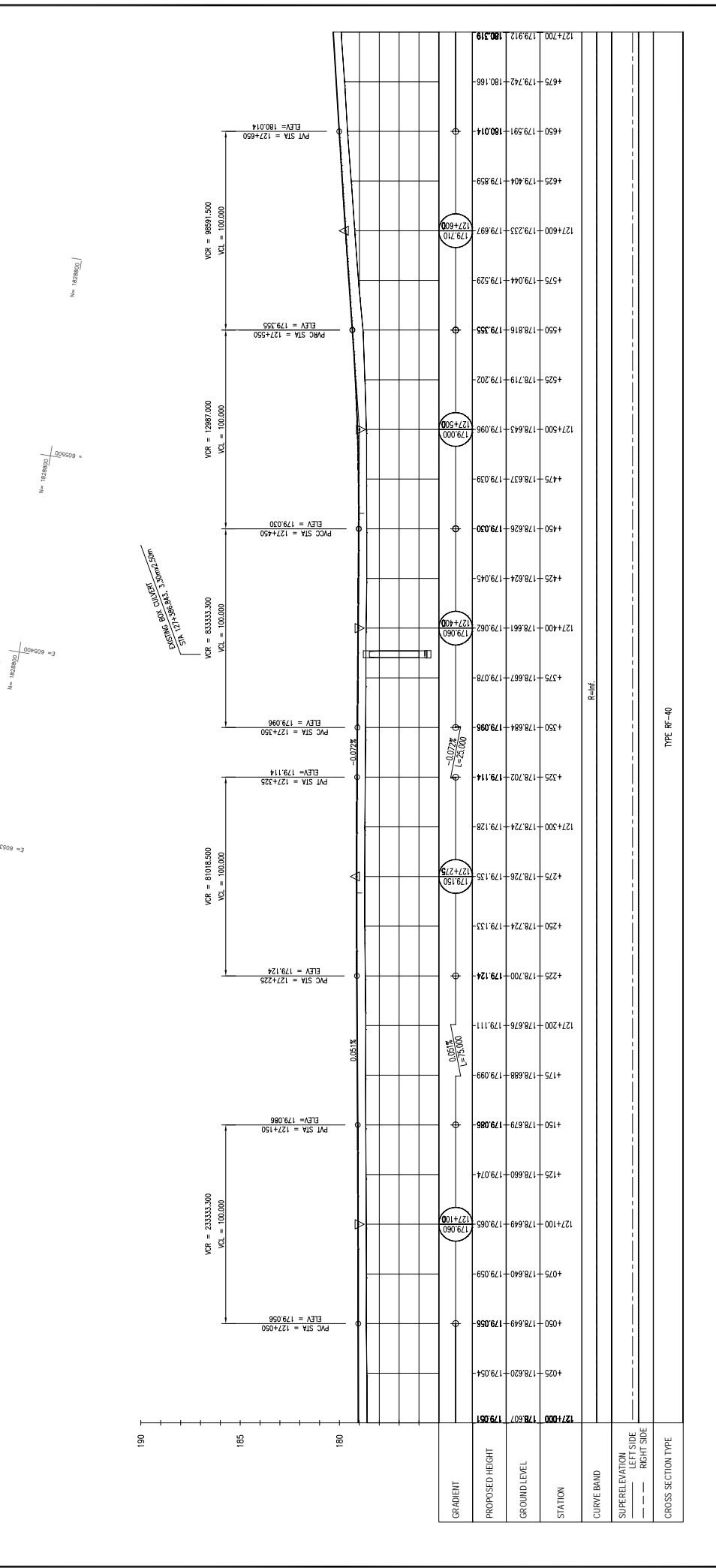
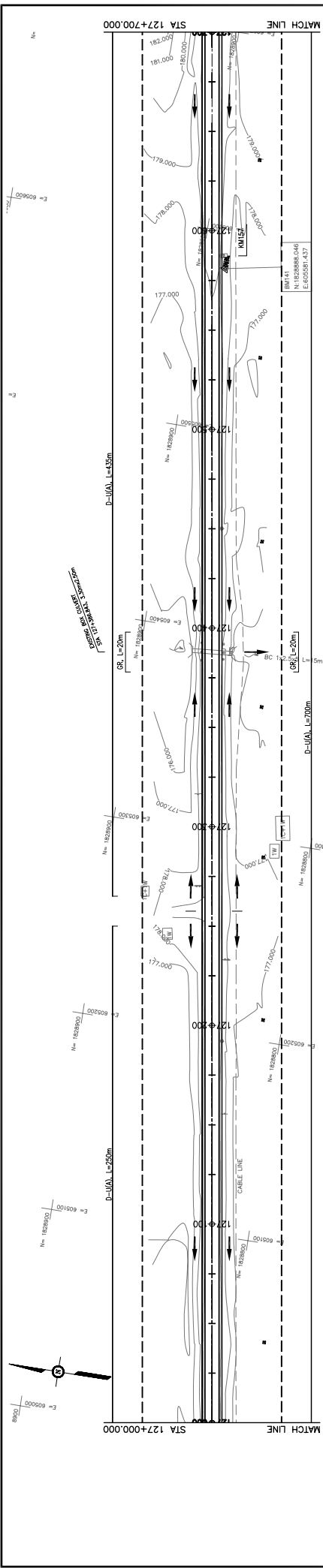
DATE	REVISION	DESCRIPTION

TYPE: Rf-40

JAPAN INTERNATIONAL COOPERATION AGENCY
THE CONSORTIUM OF
ORIENTAL CONSULTANTS CO., LTD.
INTERNATIONAL DEVELOPMENT CENTER OF JAPAN

jica ORIENTAL CONSULTANTS

TITLE	NAME	SIGNATURE
PREPARED BY		
CHECKED BY		
APPROVED BY		



REV. No.	DATE	DESCRIPTION

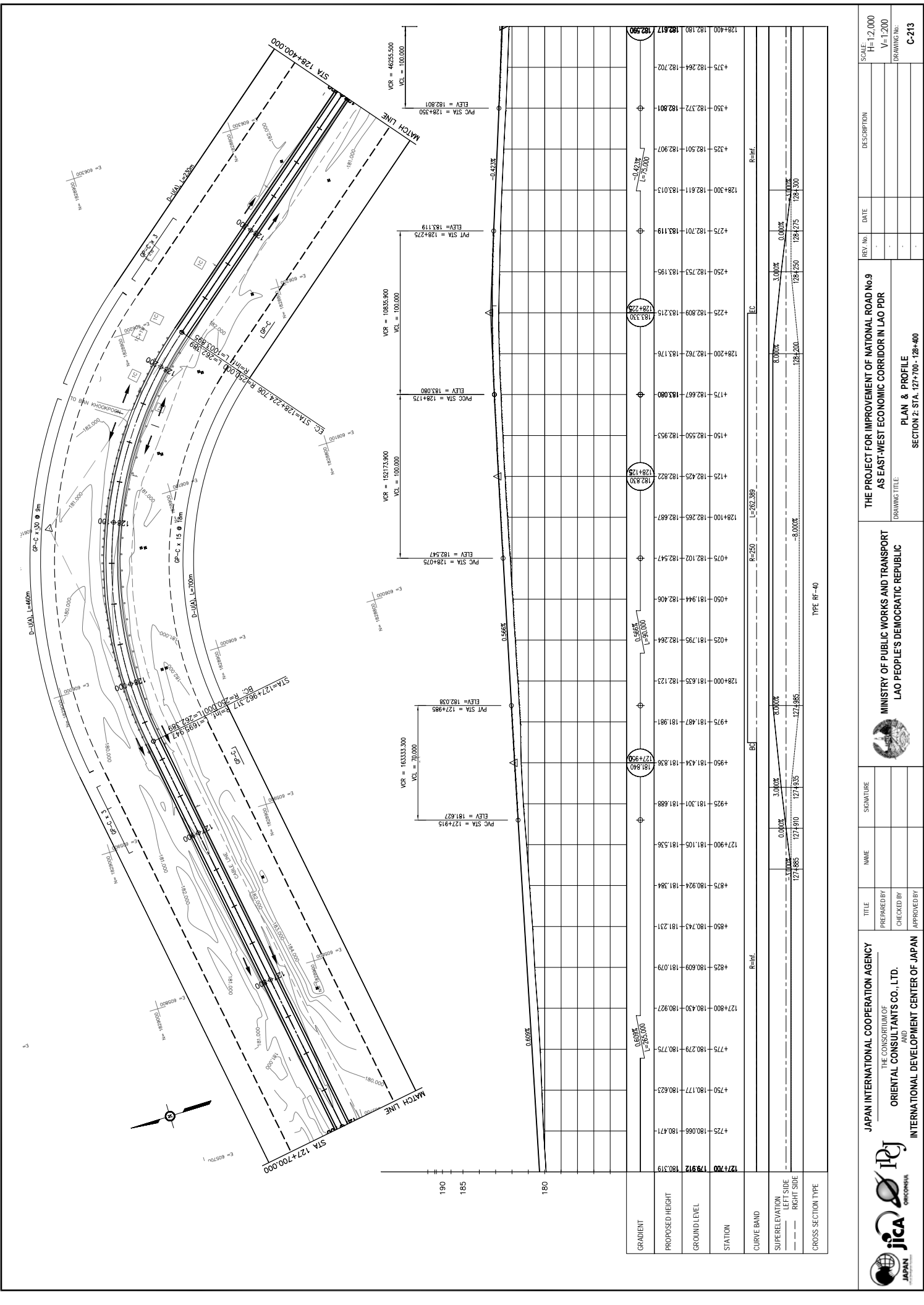
SCALE: H=1:2,000 V=1:200	DRAWING No. C-212
-----------------------------	-------------------

THE PROJECT FOR IMPROVEMENT OF NATIONAL ROAD No.9 AS EAST-WEST ECONOMIC CORRIDOR IN LAO PDR	MINISTRY OF PUBLIC WORKS AND TRANSPORT LAO PEOPLE'S DEMOCRATIC REPUBLIC
--	--

JAPAN INTERNATIONAL COOPERATION AGENCY THE CONSORTIUM OF ORIENTAL CONSULTANTS CO., LTD. INTERNATIONAL DEVELOPMENT CENTER OF JAPAN	
--	--

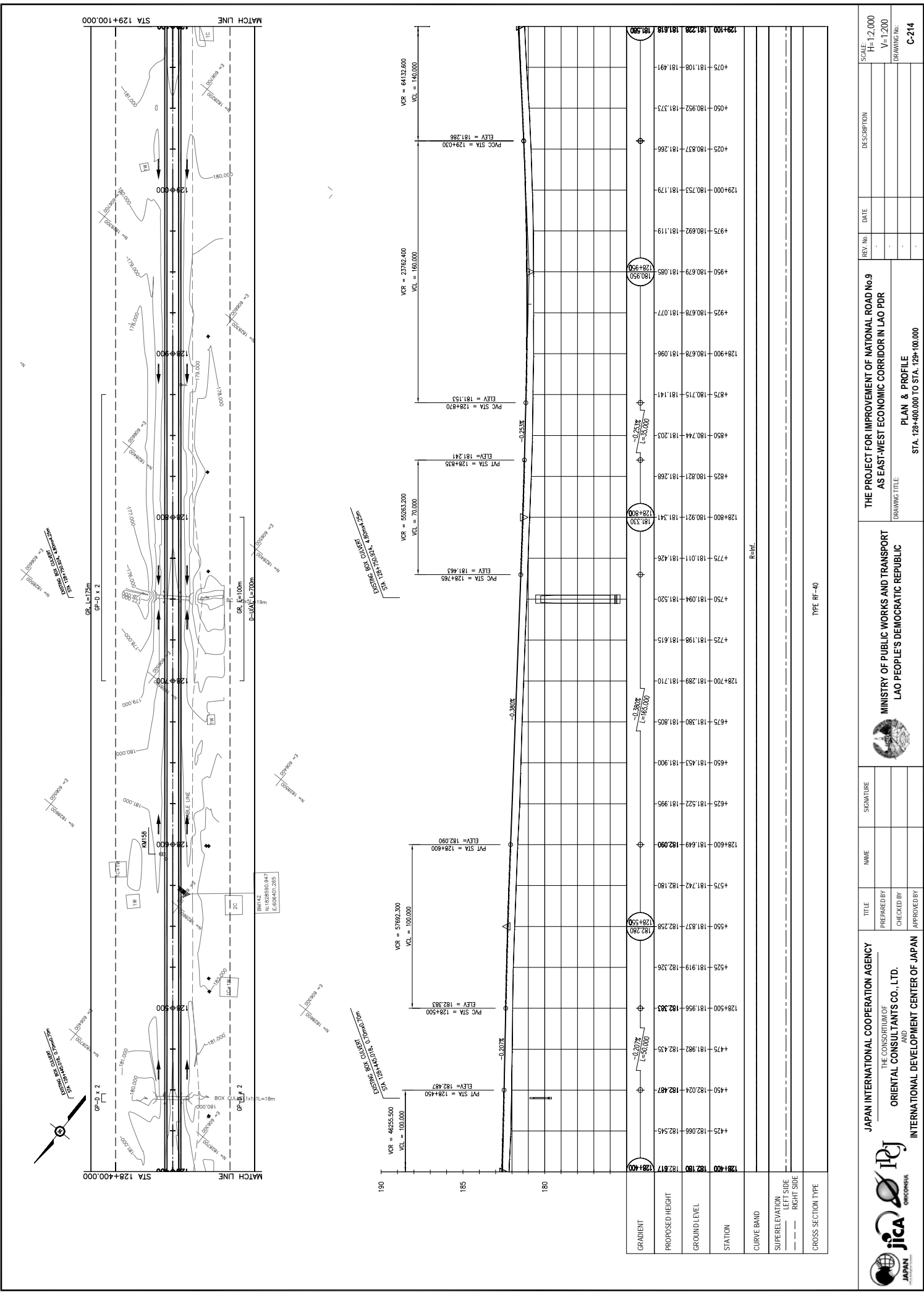
TITLE	NAME	SIGNATURE
PREPARED BY		
CHECKED BY		
APPROVED BY		

DRAWING TITLE	SECTION 2: STA. 127+000 - 127+700
PLAN & PROFILE	



REV. No.	DATE	DESCRIPTION	SCALE:
1			H=1:2,000
2			V=1:200

JAPAN INTERNATIONAL COOPERATION AGENCY THE CONSORTIUM OF ORIENTAL CONSULTANTS CO., LTD. INTERNATIONAL DEVELOPMENT CENTER OF JAPAN		MINISTRY OF PUBLIC WORKS AND TRANSPORT LAO PEOPLE'S DEMOCRATIC REPUBLIC	
TITLE PREPARED BY CHECKED BY APPROVED BY		PROJECT TITLE THE PROJECT FOR IMPROVEMENT OF NATIONAL ROAD No.9 AS EAST-WEST ECONOMIC CORRIDOR IN LAO PDR	
DRAWING No. C-213		SECTION 2: STA. 127+700 - 128+400 PLAN & PROFILE	



REV. No.	DATE	DESCRIPTION

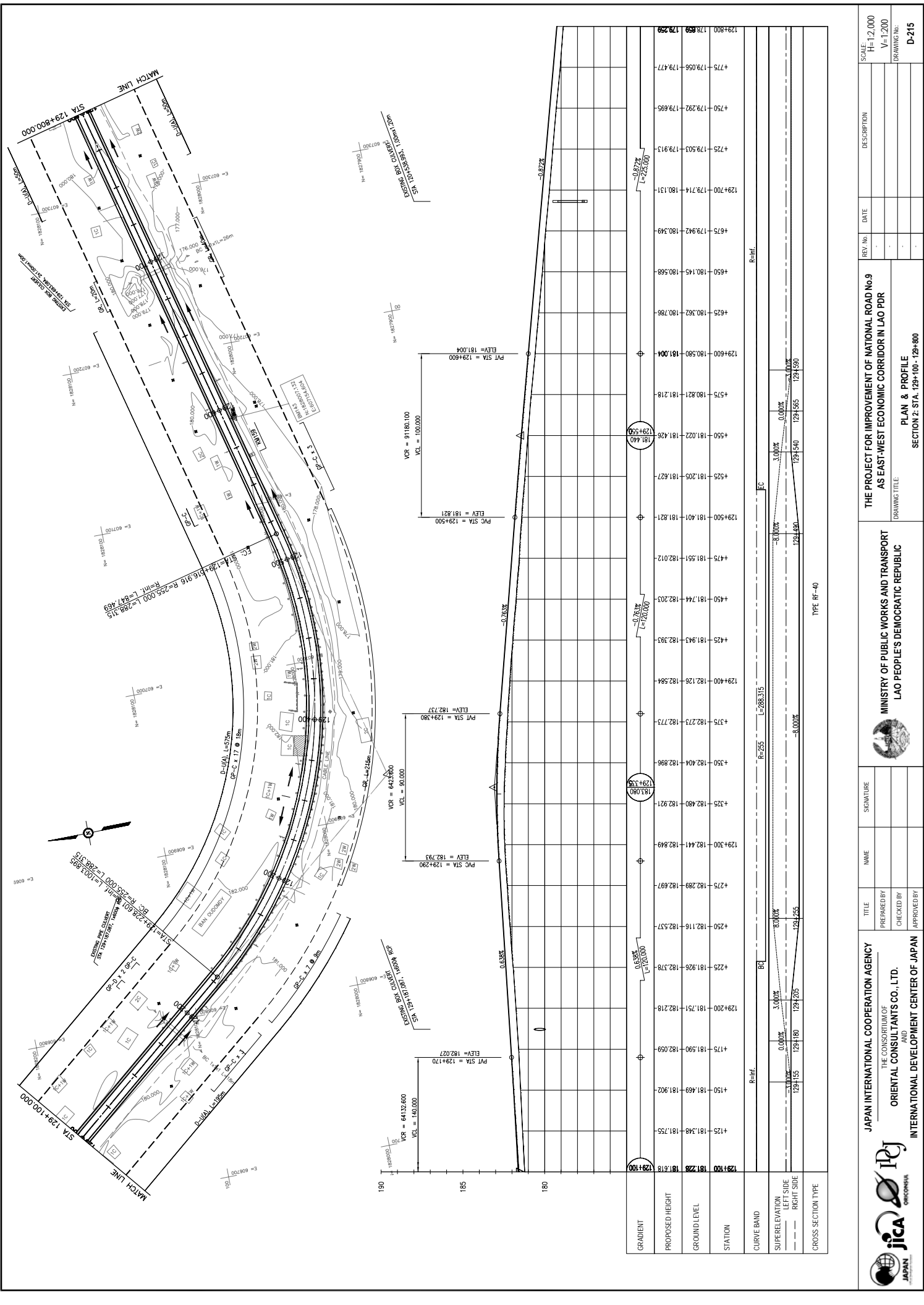
SCALE:	H=1:2,000
	V=1:200

DRAWING No. C-214	
-------------------	--

THE PROJECT FOR IMPROVEMENT OF NATIONAL ROAD No.9 AS EAST-WEST ECONOMIC CORRIDOR IN LAO PDR	
MINISTRY OF PUBLIC WORKS AND TRANSPORT LAO PEOPLE'S DEMOCRATIC REPUBLIC	
DRAWING TITLE: PLAN & PROFILE STA. 128+400.000 TO STA. 129+100.000	

TITLE	SIGNATURE
PREPARED BY	
CHECKED BY	
APPROVED BY	

JAPAN INTERNATIONAL COOPERATION AGENCY	
THE CONSORTIUM OF ORIENTAL CONSULTANTS CO., LTD.	
INTERNATIONAL DEVELOPMENT CENTER OF JAPAN	



GRADIENT	PROPOSED HEIGHT	GROUND LEVEL	STATION	CURVE BAND	SUPERELEVATION LEFT SIDE	SUPERELEVATION RIGHT SIDE	CROSS SECTION TYPE
	181.225	181.518	129+100		0.00%	0.00%	Ref.
	181.348	181.902	+125		0.00%	0.00%	
	181.469	181.902	+150		0.00%	0.00%	
	181.590	182.059	+175		0.00%	0.00%	
	181.751	182.218	129+200		0.00%	0.00%	
	181.926	182.378	+225		0.00%	0.00%	
	182.116	182.537	+250		0.00%	0.00%	
	182.289	182.697	+275		0.00%	0.00%	
	182.441	182.849	129+300		0.00%	0.00%	
	182.480	182.921	+325		0.00%	0.00%	
	182.404	182.986	+350		0.00%	0.00%	
	182.273	182.775	+375		0.00%	0.00%	
	182.126	182.584	129+400		0.00%	0.00%	
	181.943	182.393	+425		0.00%	0.00%	
	181.744	182.203	+450		0.00%	0.00%	
	181.551	182.012	129+500		0.00%	0.00%	
	181.401	181.821	+525		0.00%	0.00%	
	181.205	181.627	+550		0.00%	0.00%	
	181.022	181.426	129+600		0.00%	0.00%	
	180.821	181.218	+575		0.00%	0.00%	
	180.580	181.004	129+700		0.00%	0.00%	
	179.714	180.131	+725		0.00%	0.00%	
	179.503	179.913	+750		0.00%	0.00%	
	179.292	179.695	+775		0.00%	0.00%	
	179.056	179.477	129+800		0.00%	0.00%	
	178.859	179.259			0.00%	0.00%	

MINISTRY OF PUBLIC WORKS AND TRANSPORT
LAO PEOPLE'S DEMOCRATIC REPUBLIC

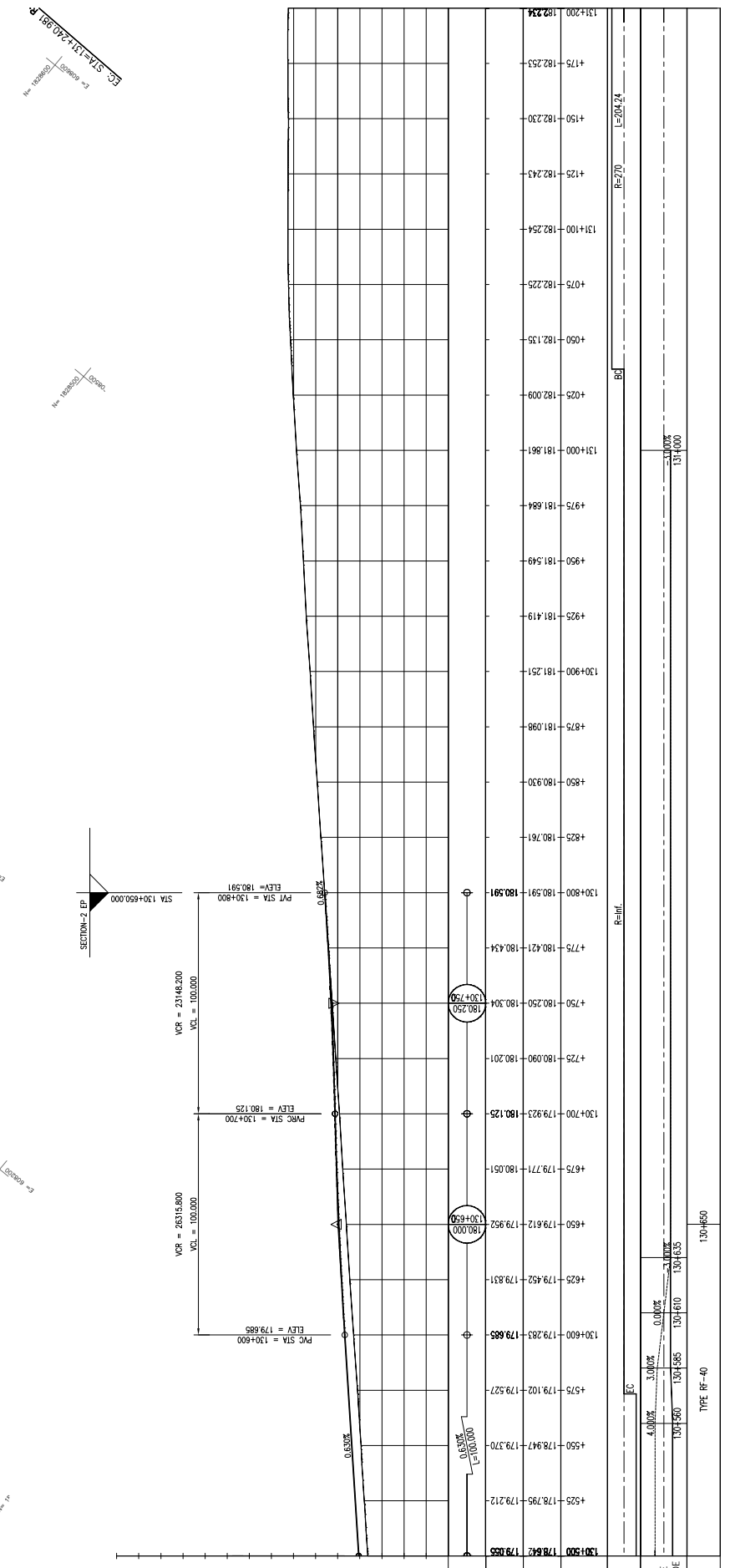
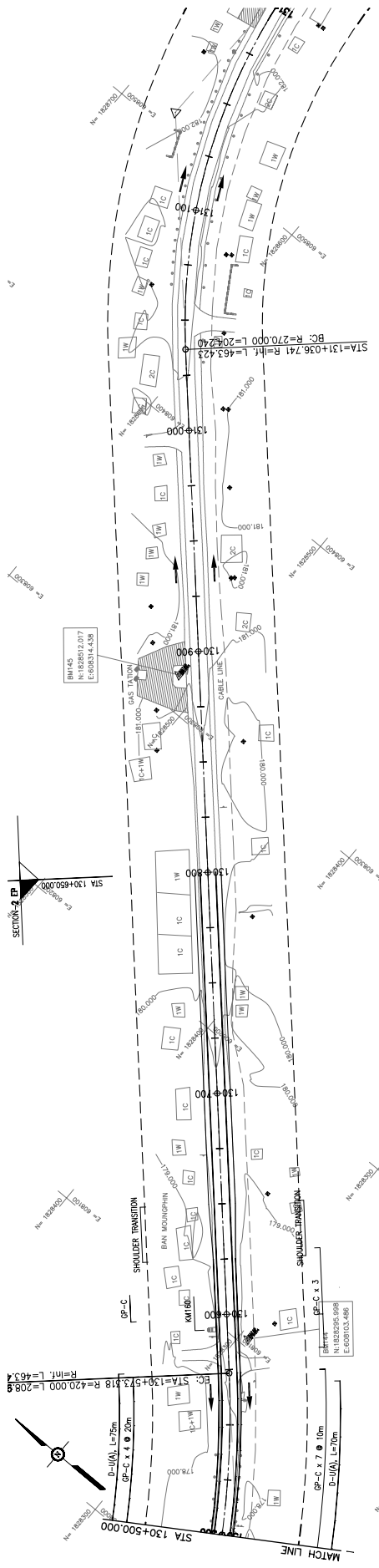
JAPAN INTERNATIONAL COOPERATION AGENCY
 THE CONSORTIUM OF
ORIENTAL CONSULTANTS CO., LTD.
INTERNATIONAL DEVELOPMENT CENTER OF JAPAN

THE PROJECT FOR IMPROVEMENT OF NATIONAL ROAD No.9
AS EAST-WEST ECONOMIC CORRIDOR IN LAO PDR

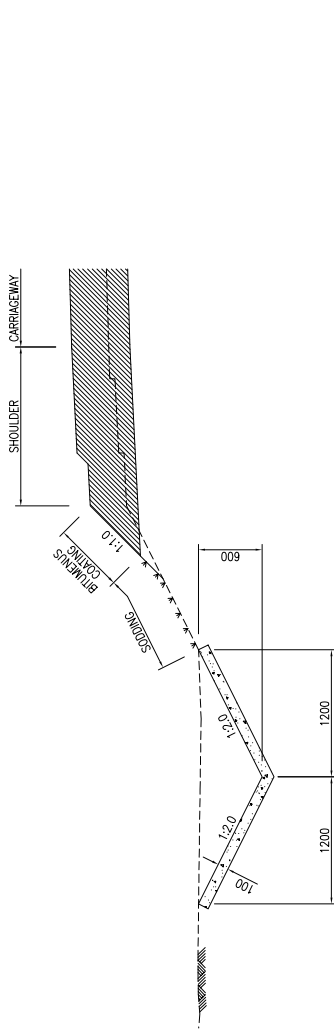
PLAN & PROFILE
 SECTION 2: STA. 129+100 - 129+800

REV. No.	DATE	DESCRIPTION

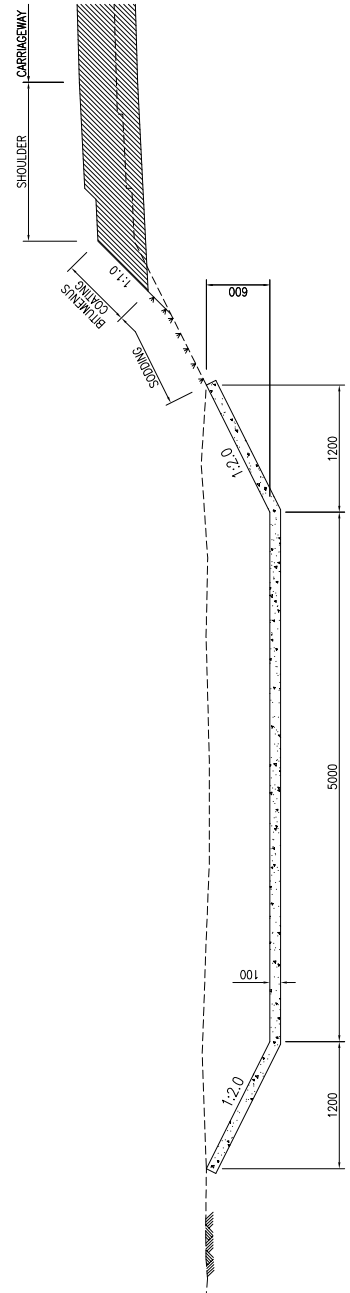
SCALE: H=1:2,000
 V=1:200
 DRAWING No. **D-215**



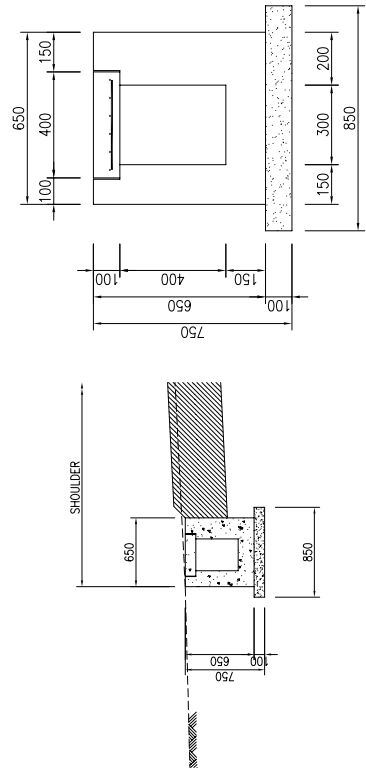
REV. No.	DATE	DESCRIPTION
1		
2		
3		
4		
5		
6		
7		
8		
9		
10		
11		
12		
13		
14		
15		
16		
17		
18		
19		
20		
21		
22		
23		
24		
25		
26		
27		
28		
29		
30		
31		
32		
33		
34		
35		
36		
37		
38		
39		
40		
41		
42		
43		
44		
45		
46		
47		
48		
49		
50		
51		
52		
53		
54		
55		
56		
57		
58		
59		
60		
61		
62		
63		
64		
65		
66		
67		
68		
69		
70		
71		
72		
73		
74		
75		
76		
77		
78		
79		
80		
81		
82		
83		
84		
85		
86		
87		
88		
89		
90		
91		
92		
93		
94		
95		
96		
97		
98		
99		
100		
101		
102		
103		
104		
105		
106		
107		
108		
109		
110		
111		
112		
113		
114		
115		
116		
117		
118		
119		
120		
121		
122		
123		
124		
125		
126		
127		
128		
129		
130		
131		
132		
133		
134		
135		
136		
137		
138		
139		
140		
141		
142		
143		
144		
145		
146		
147		
148		
149		
150		
151		
152		
153		
154		
155		
156		
157		
158		
159		
160		
161		
162		
163		
164		
165		
166		
167		
168		
169		
170		
171		
172		
173		
174		
175		
176		
177		
178		
179		
180		
181		
182		
183		
184		
185		
186		
187		
188		
189		
190		
191		
192		
193		
194		
195		
196		
197		
198		
199		
200		
201		
202		
203		
204		
205		
206		
207		
208		
209		
210		
211		
212		
213		
214		
215		
216		
217		
218		
219		
220		
221		
222		
223		
224		
225		
226		
227		
228		
229		
230		
231		
232		
233		
234		
235		
236		
237		
238		
239		
240		
241		
242		
243		
244		
245		
246		
247		
248		
249		
250		
251		
252		
253		
254		
255		
256		
257		
258		
259		
260		
261		
262		
263		
264		
265		
266		
267		
268		
269		
270		
271		
272		
273		
274		
275		
276		
277		
278		
279		
280		
281		
282		
283		
284		
285		
286		
287		
288		
289		
290		
291		
292		
293		
294		
295		
296		
297		
298		
299		
300		
301		
302		
303		
304		
305		
306		
307		
308		
309		
310		
311		
312		
313		
314		
315		
316		
317		
318		
319		
320		
321		
322		
323		
324		
325		
326		
327		
328		
329		
330		
331		
332		
333		
334		
335		
336		
337		
338		
339		
340		
341		
342		
343		
344		
345		
346		
347		
348		
349		
350		
351		
352		
353		
354		
355		
356		
357		
358		
359		
360		
361		
362		
363		
364		
365		
366		
367		
368		
369		
370		
371		
372		
373		
374		
375		
376		
377		
378		
379		
380		
381		
382		
383		
384		
385		
386		
387		
388		
389		
390		
391		
392		
393		
394		
395		
396		
397		
398		
399		
400		
401		
402		
403		
404		
405		



CONCRETE DITCH D-U(A)



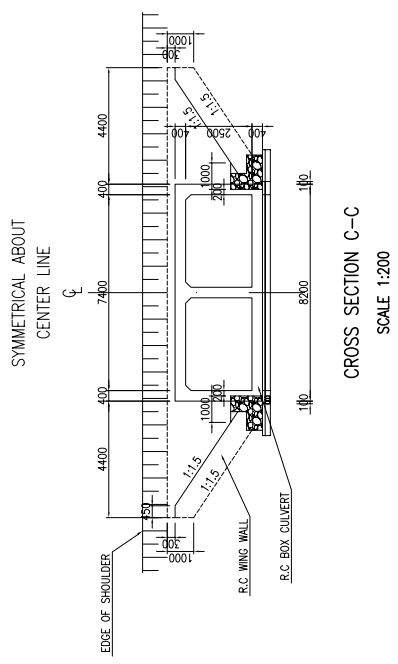
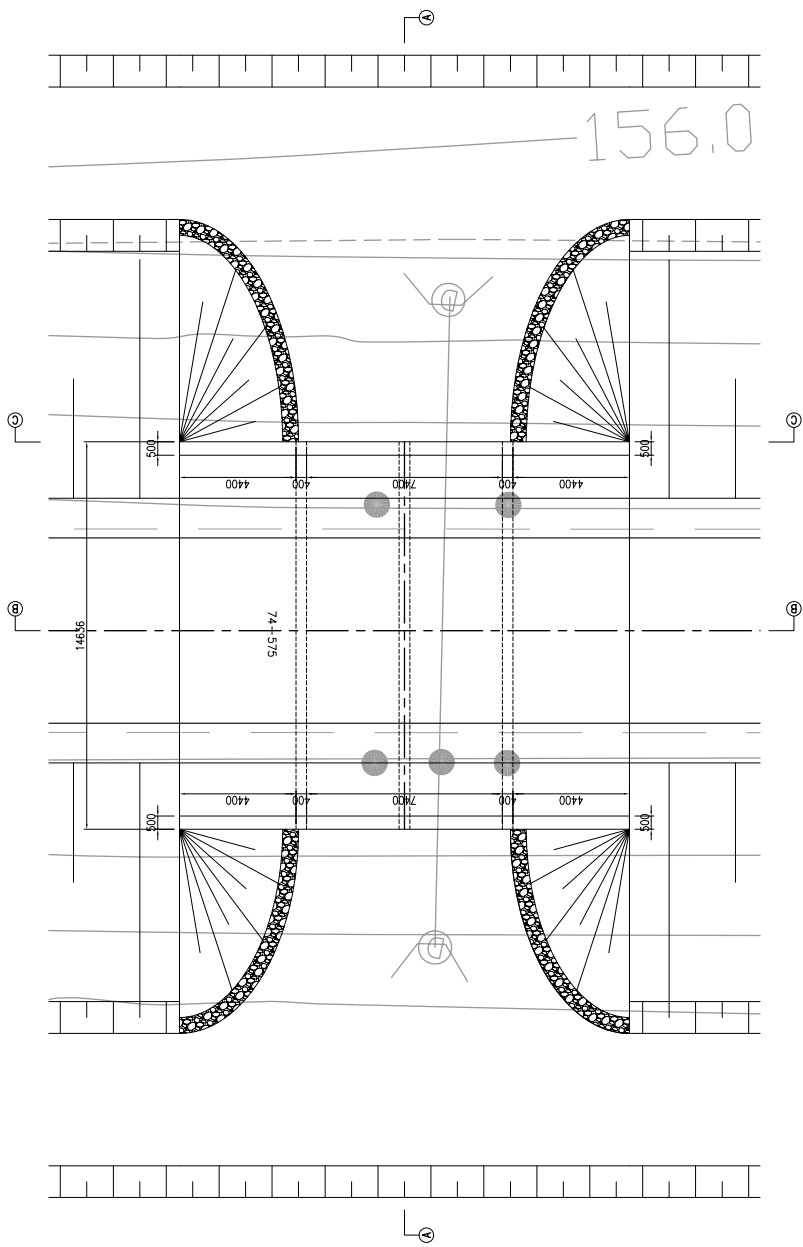
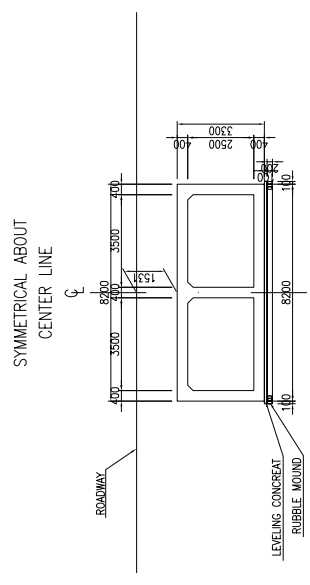
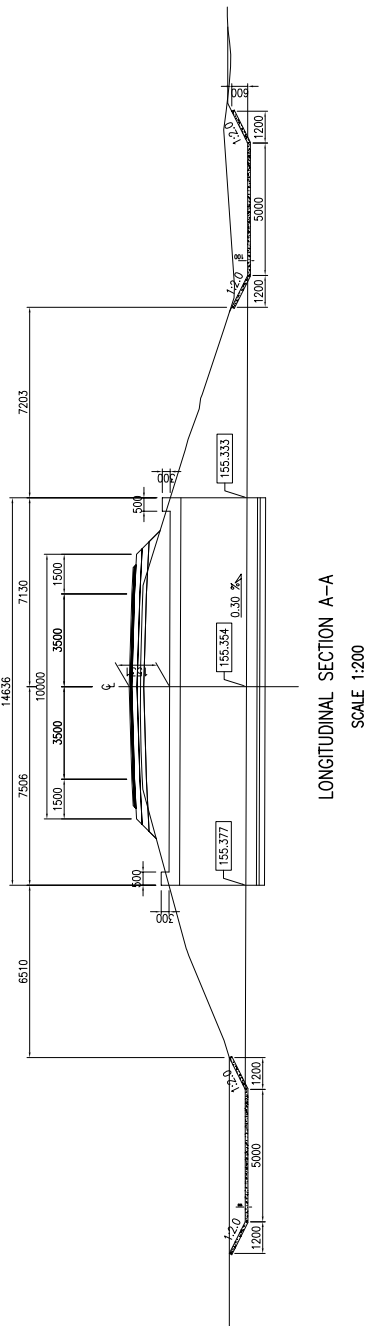
CONCRETE DITCH D-U(B)



U-TYPE DITCH D-U(C)

NOTES:
ALL DIMENSIONS ARE IN MILLIMETERS UNLESS OTHERWISE INDICATED.

	JAPAN INTERNATIONAL COOPERATION AGENCY THE CONSORTIUM OF ORIENTAL CONSULTANTS CO., LTD. INTERNATIONAL DEVELOPMENT CENTER OF JAPAN		TITLE	NAME	SIGNATURE	THE PROJECT FOR IMPROVEMENT OF NATIONAL ROAD No.9 AS EAST-WEST ECONOMIC CORRIDOR IN LAO PDR DRAWING TITLE DETAILS OF DRAINAGE DITCH	REV. No.	DATE	DESCRIPTION	SCALE	
	PREPARED BY			0				1			1:200
	CHECKED BY			1				2			DRAWING No.:
			APPROVED BY				3			D-01	



				<p>THE PROJECT FOR IMPROVEMENT OF NATIONAL ROAD No.9 AS EAST-WEST ECONOMIC CORRIDOR IN LAO PDR</p>		<p>DESCRIPTION</p>		<p>SCALE</p>	
<p>JAPAN INTERNATIONAL COOPERATION AGENCY THE CONSORTIUM OF ORIENTAL CONSULTANTS CO., LTD. INTERNATIONAL DEVELOPMENT CENTER OF JAPAN</p>		<p>MINISTRY OF PUBLIC WORKS AND TRANSPORT LAO PEOPLE'S DEMOCRATIC REPUBLIC</p>		<p>BOX CULVERT STRUCTURE</p>		<p>REV. No.</p>		<p>DATE</p>	
<p>PREPARED BY</p>		<p>CHECKED BY</p>		<p>APPROVED BY</p>		<p>DATE</p>		<p>1:200</p>	
<p>TITLE</p>		<p>NAME</p>		<p>SIGNATURE</p>		<p>DATE</p>		<p>DRAWING No.</p>	
<p>APPROVED BY</p>		<p>NAME</p>		<p>SIGNATURE</p>		<p>DATE</p>		<p>D-02</p>	