

---

(7) 概略設計図



MINISTRY OF PUBLIC WORKS AND TRANSPORT  
LAO PEOPLE'S DEMOCRATIC REPUBLIC

**THE PREPARATORY SURVEY ON  
THE PROJECT FOR IMPROVEMENT OF NATIONAL ROAD No.9  
AS EAST-WEST ECONOMIC CORRIDOR IN LAO PDR**

**DRAWINGS**

JUNE 2011



JAPAN INTERNATIONAL COOPERATION AGENCY



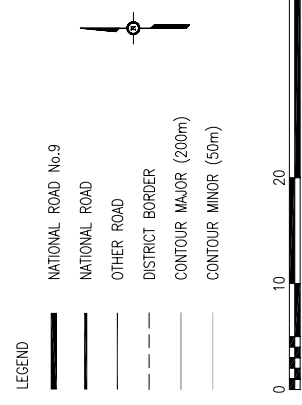
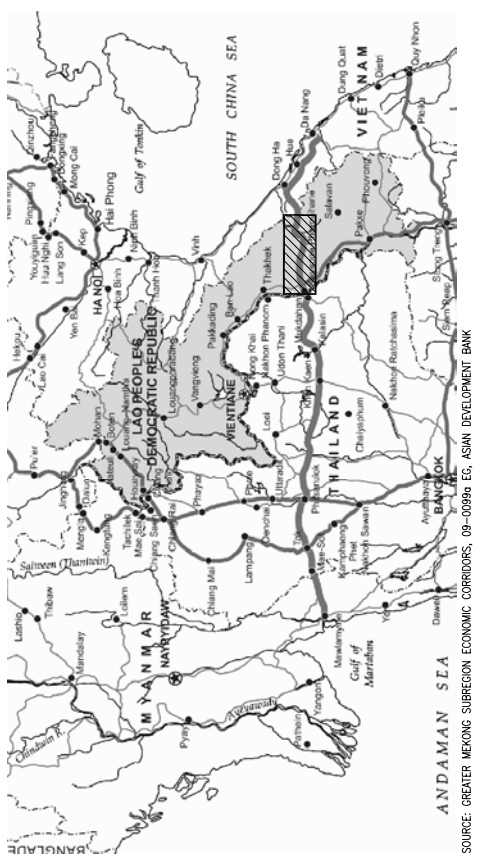
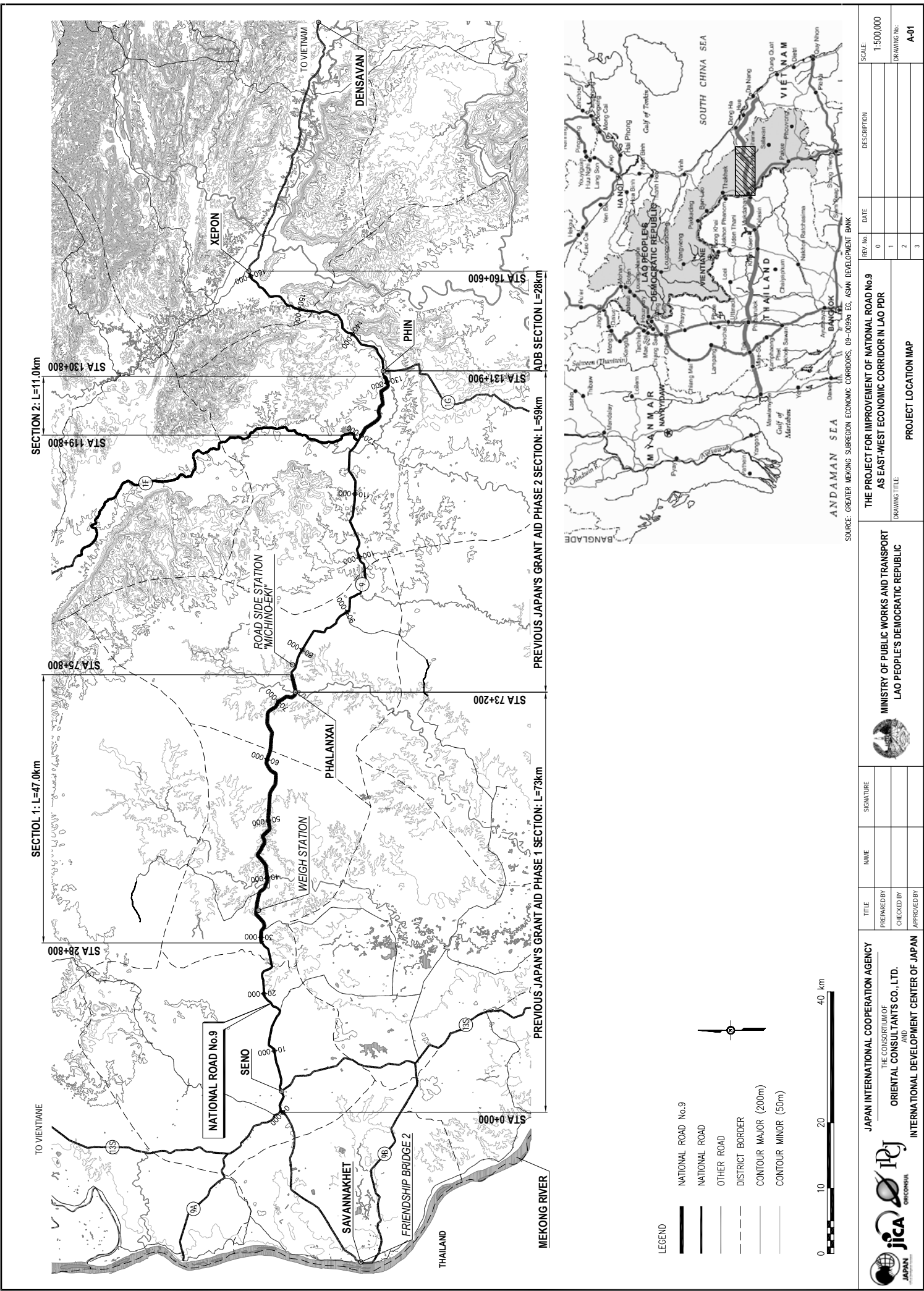
THE CONSORTIUM OF  
ORIENTAL CONSULTANTS CO., LTD.

AND



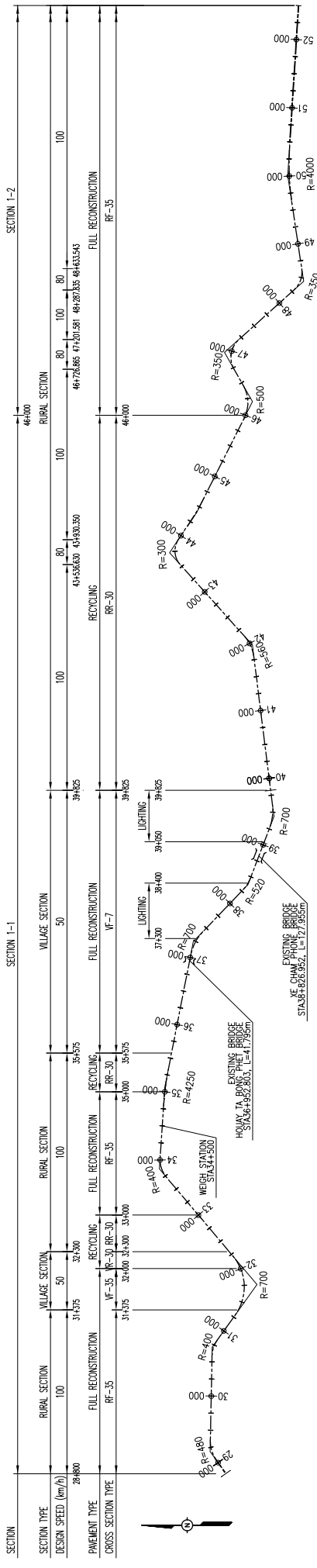
INTERNATIONAL DEVELOPMENT CENTER OF JAPAN INC.



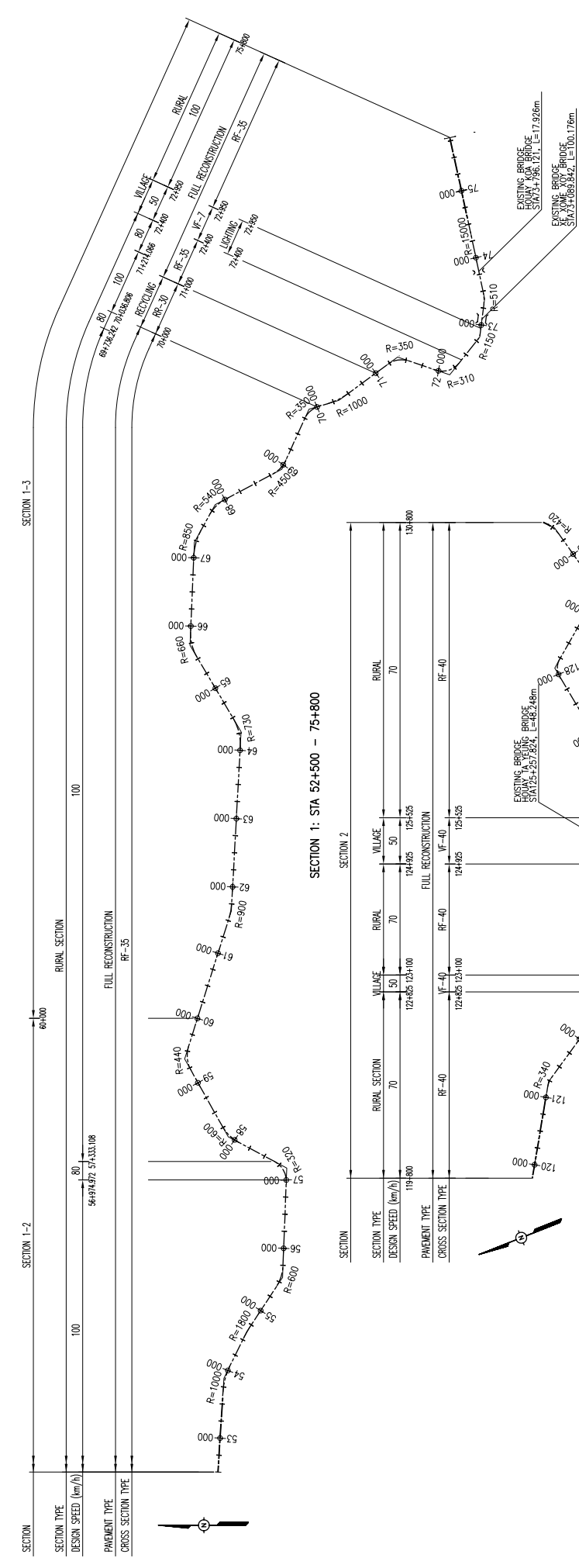


JAPAN INTERNATIONAL COOPERATION AGENCY		TITLE		SIGNATURE	
THE CONSORTIUM OF ORIENTAL CONSULTANTS CO., LTD.		PREPARED BY		NAME	
INTERNATIONAL DEVELOPMENT CENTER OF JAPAN		CHECKED BY			
		APPROVED BY			
THE PROJECT FOR IMPROVEMENT OF NATIONAL ROAD No.9 AS EAST-WEST ECONOMIC CORRIDOR IN LAO PDR					
DRAWING TITLE					
PROJECT LOCATION MAP					
REV. No.	DATE	DESCRIPTION			
0					
1					
2					
3					
SCALE:		1:500,000			
DRAWING No.:		A-01			

SOURCE: GREATER MEKONG SUBREGION ECONOMIC CORRIDORS, 09-0099a EG, ASIAN DEVELOPMENT BANK



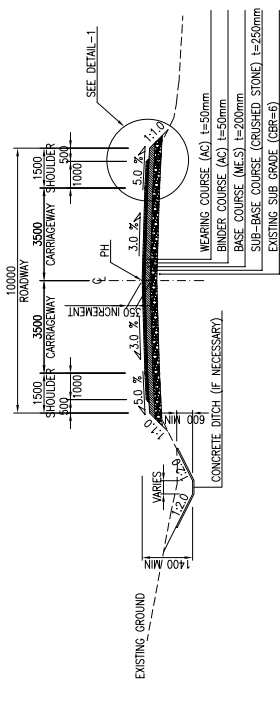
SECTION 1: STA 28+800 - 52+500



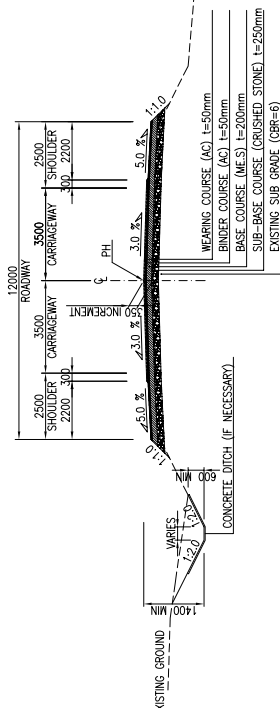
SECTION 1: STA 52+500 - 75+800

SECTION 2: STA 119+800 - 130+800

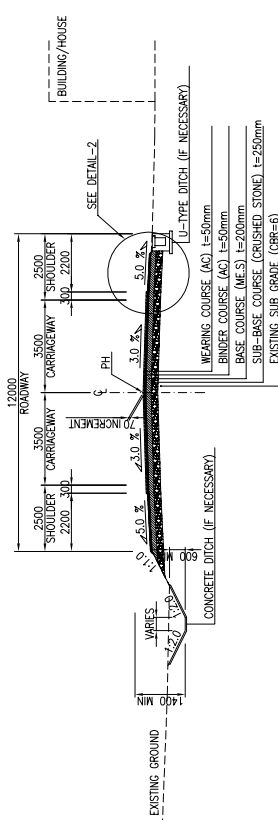
	TITLE	NAME	SIGNATURE		THE PROJECT FOR IMPROVEMENT OF NATIONAL ROAD No.9 AS EAST-WEST ECONOMIC CORRIDOR IN LAO PDR	
	PREPARED BY	CHECKED BY	APPROVED BY		REVISION No.	DATE
				DRAWING TITLE: <b>GUIDE MAP</b>		SCALE: 1:60,000
						DRAWING No.: <b>A-02</b>



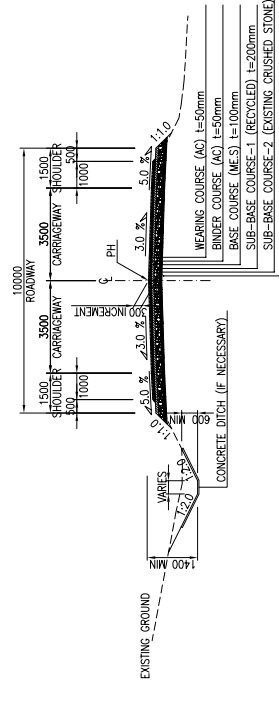
RURAL SECTION - FULL RECONSTRUCTION (RF-35)



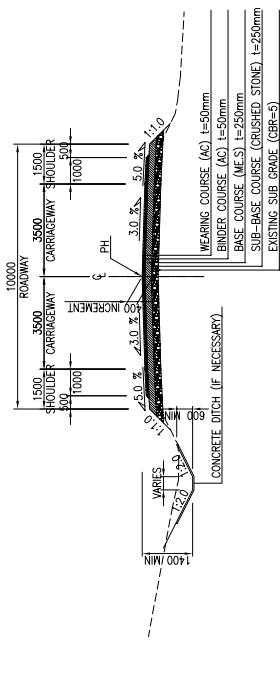
VILLAGE SECTION - FULL RECONSTRUCTION (VF-35)



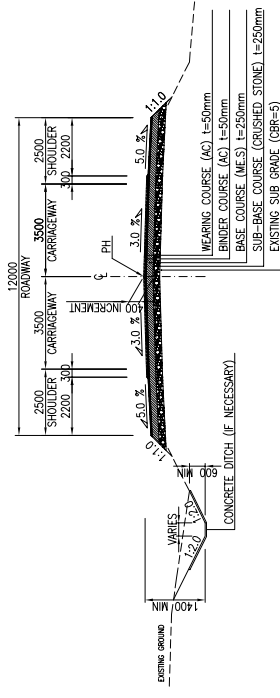
VILLAGE SECTION - FULL RECONSTRUCTION (VF-7)



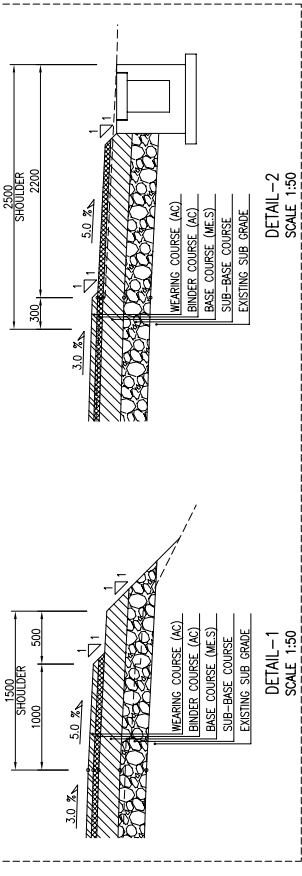
RURAL SECTION - IN-SITU RECYCLING OF BASE COURSE (RR-30)



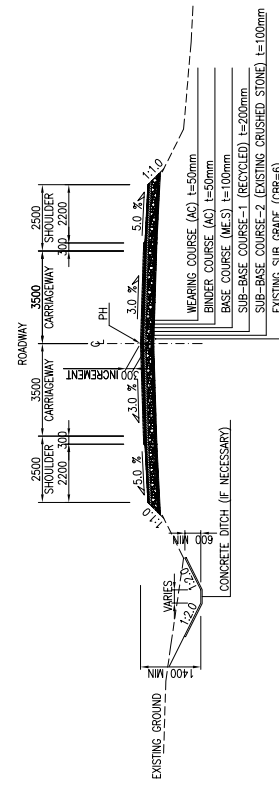
RURAL SECTION - FULL RECONSTRUCTION (RF-40)



VILLAGE SECTION - FULL RECONSTRUCTION (VF-40)



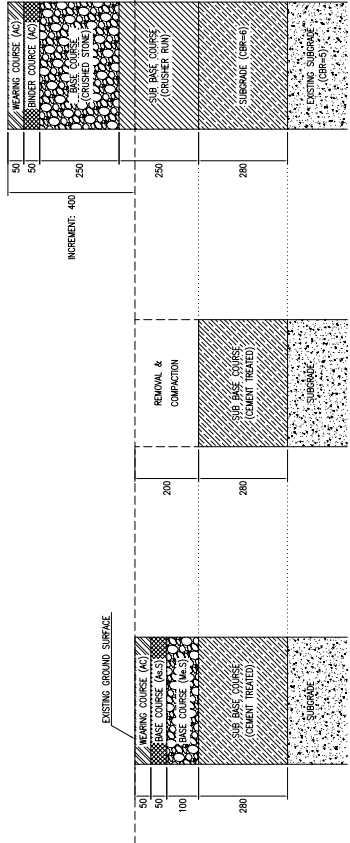
FULL RECONSTRUCTION



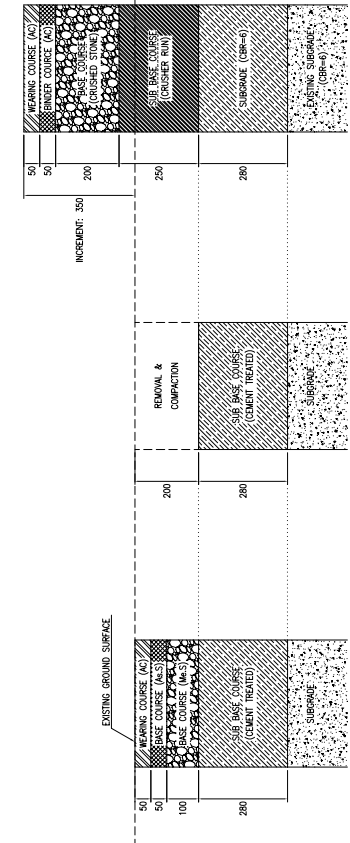
VILLAGE SECTION - IN-SITU RECYCLING OF BASE COURSE (VR-30)

IN-SITU RECYCLING OF BASE COURSE

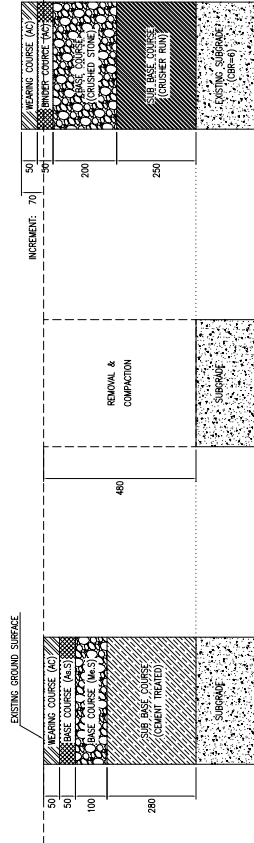
JAPAN INTERNATIONAL COOPERATION AGENCY THE CONSORTIUM OF ORIENTAL CONSULTANTS CO., LTD. INTERNATIONAL DEVELOPMENT CENTER OF JAPAN		MINISTRY OF PUBLIC WORKS AND TRANSPORT LAO PEOPLE'S DEMOCRATIC REPUBLIC		THE PROJECT FOR IMPROVEMENT OF NATIONAL ROAD No.9 AS EAST-WEST ECONOMIC CORRIDOR IN LAO PDR	
TITLE	NAME	DATE	DESCRIPTION	SCALE	
PREPARED BY	SIGNATURE	0		1:200	
CHECKED BY		1			
APPROVED BY		2			
		3			
TYPICAL CROSS SECTION					
DRAWING No. C-1					



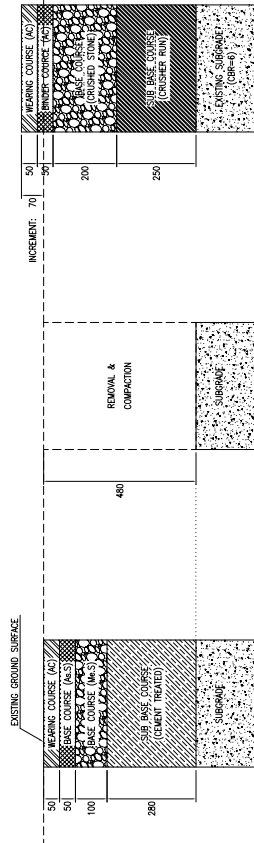
FULL RECONSTRUCTION (RURAL SECTION) - SECTION 2



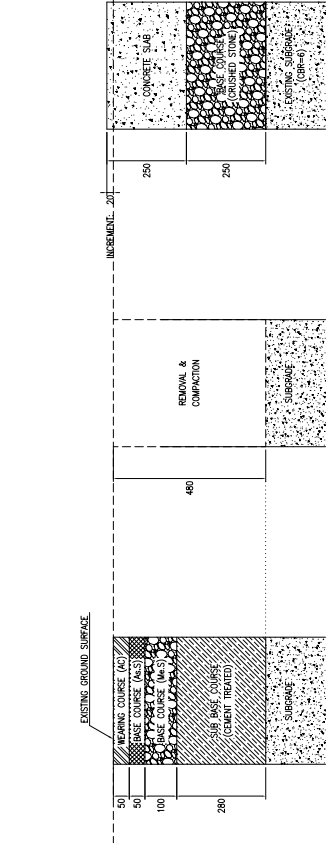
FULL RECONSTRUCTION (RURAL SECTION) - SECTION 1



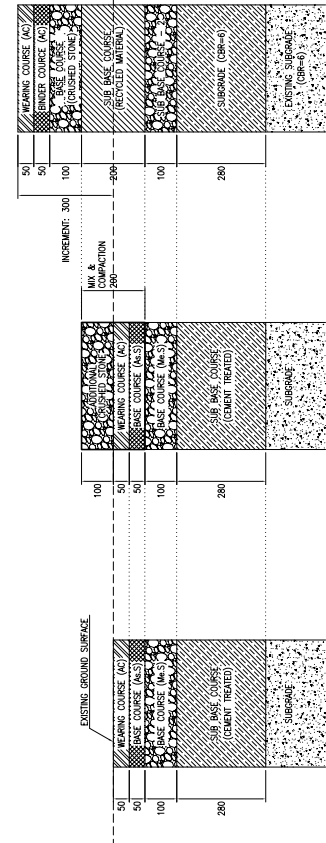
FULL RECONSTRUCTION (VILLAGE SECTION) - SECTION 2



FULL RECONSTRUCTION (VILLAGE SECTION) - SECTION 1

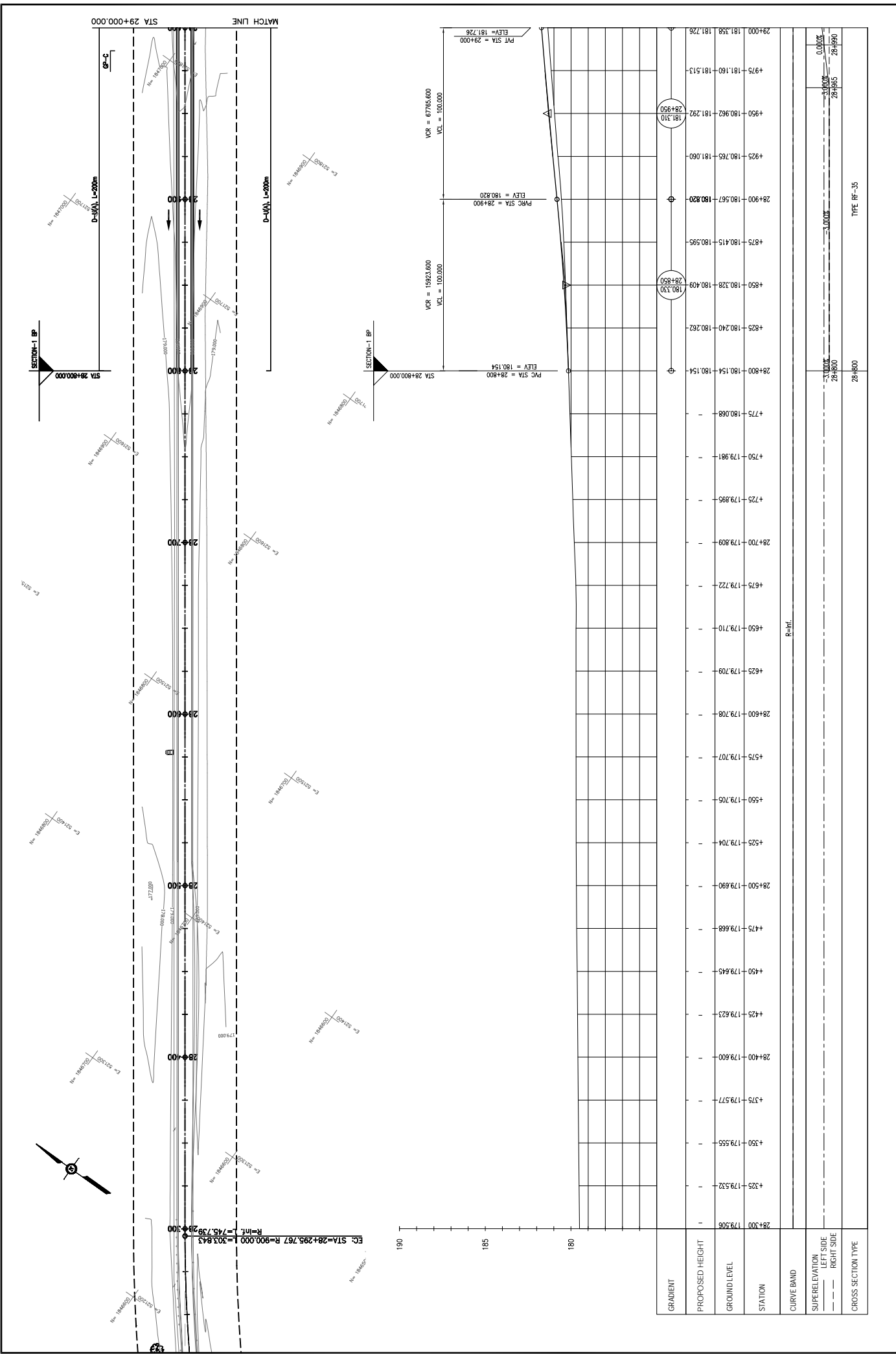


CONCRETE PAVEMENT - SECTION 1



IN-SITU RECYCLING OF BASE COURSE - SECTION 1

		<p>JAPAN INTERNATIONAL COOPERATION AGENCY THE CONSORTIUM OF ORIENTAL CONSULTANTS CO., LTD. INTERNATIONAL DEVELOPMENT CENTER OF JAPAN</p>		<p>MINISTRY OF PUBLIC WORKS AND TRANSPORT LAO PEOPLE'S DEMOCRATIC REPUBLIC</p>		<p>THE PROJECT FOR IMPROVEMENT OF NATIONAL ROAD No.9 AS EAST-WEST ECONOMIC CORRIDOR IN LAO PDR</p>		<p>SCALE: N/A</p>
TITLE	NAME	SIGNATURE	DATE	REV. No.	DESCRIPTION	PAVEMENT DETAILS		
PREPARED BY				0		DRAWING No.		
CHECKED BY				1		DRAWING No.		
APPROVED BY				2		DRAWING No.		
				3		DRAWING No.		



GRADIENT	PROPOSED HEIGHT	GROUND LEVEL	STATION	CURVE BAND	SUPERELEVATION LEFT SIDE RIGHT SIDE	CROSS SECTION TYPE
			28+300			
			179.506			
			4+25			
			179.532			
			4+30			
			179.555			
			4+37.5			
			179.577			
			28+400			
			179.600			
			4+25			
			179.623			
			4+20			
			179.645			
			4+15			
			179.668			
			28+500			
			179.690			
			4+10			
			179.704			
			4+05			
			179.705			
			4+00			
			179.707			
			28+600			
			179.708			
			4+00			
			179.709			
			3+55			
			179.710			
			3+50			
			179.722			
			28+700			
			179.809			
			3+45			
			179.895			
			3+40			
			179.981			
			28+800			
			180.154			
			3+35			
			180.240			
			180.262			
			180.328			
			180.409			
			28+900			
			180.567			
			180.820			
			4+25			
			180.765			
			181.060			
			4+30			
			181.292			
			181.310			
			28+950			
			181.358			
			181.726			

JICA INTERNATIONAL COOPERATION AGENCY  
THE CONSORTIUM OF  
ORIENTAL CONSULTANTS CO., LTD.  
INTERNATIONAL DEVELOPMENT CENTER OF JAPAN

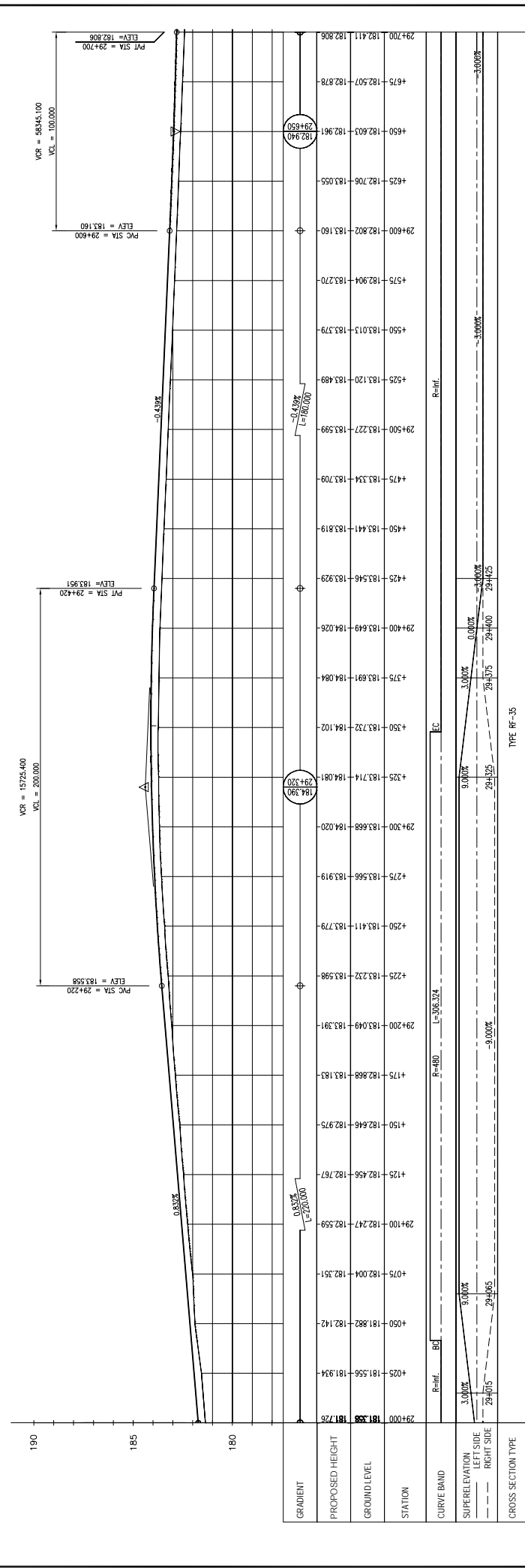
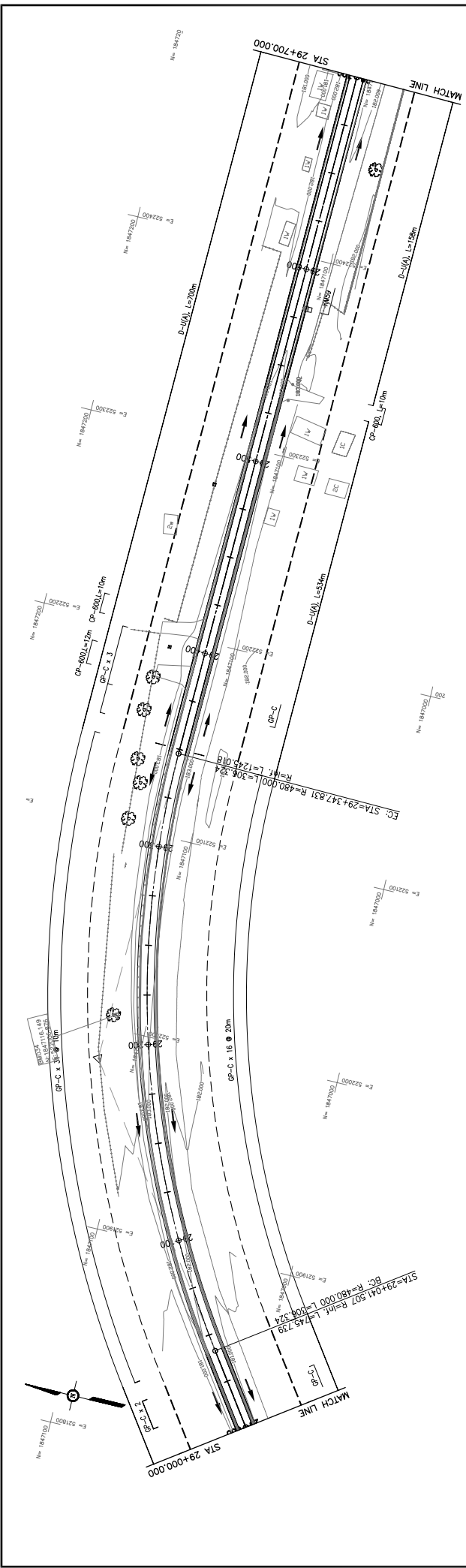
MINISTRY OF PUBLIC WORKS AND TRANSPORT  
LAO PEOPLE'S DEMOCRATIC REPUBLIC

THE PROJECT FOR IMPROVEMENT OF NATIONAL ROAD No.9  
AS EAST-WEST ECONOMIC CORRIDOR IN LAO PDR

PLAN & PROFILE  
SECTION 1: STA. 28+300 - 29+000

REV. No.	DATE	DESCRIPTION

SCALE: H=1:2,000  
V=1:200  
DRAWING No.: C-101



REV. No.	DATE	DESCRIPTION	SCALE
1			H=1:2,000 V=1:200
2			
3			
4			
5			

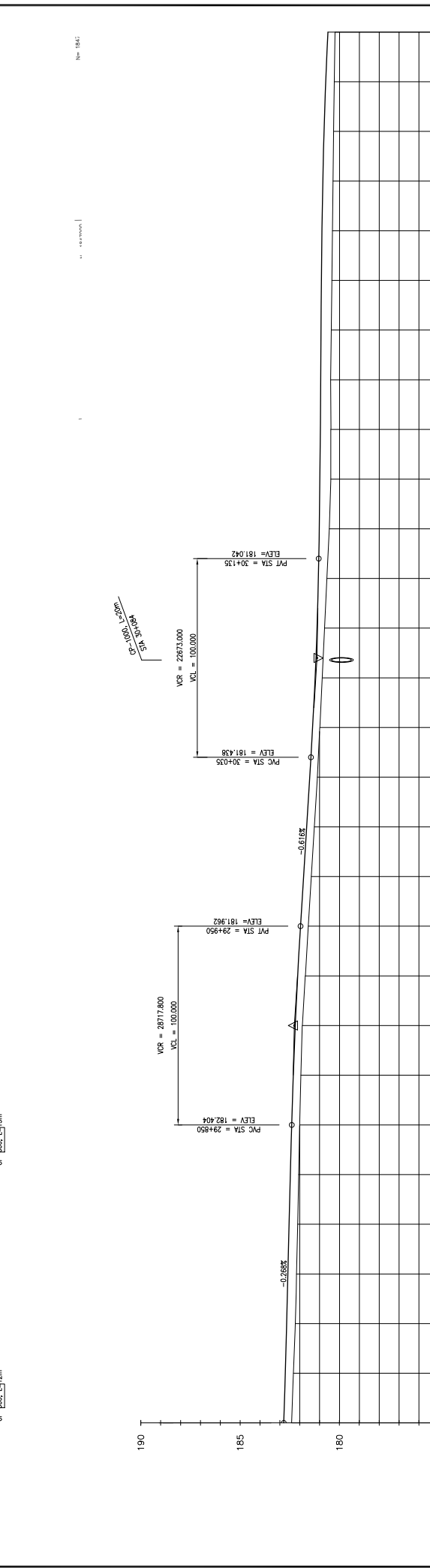
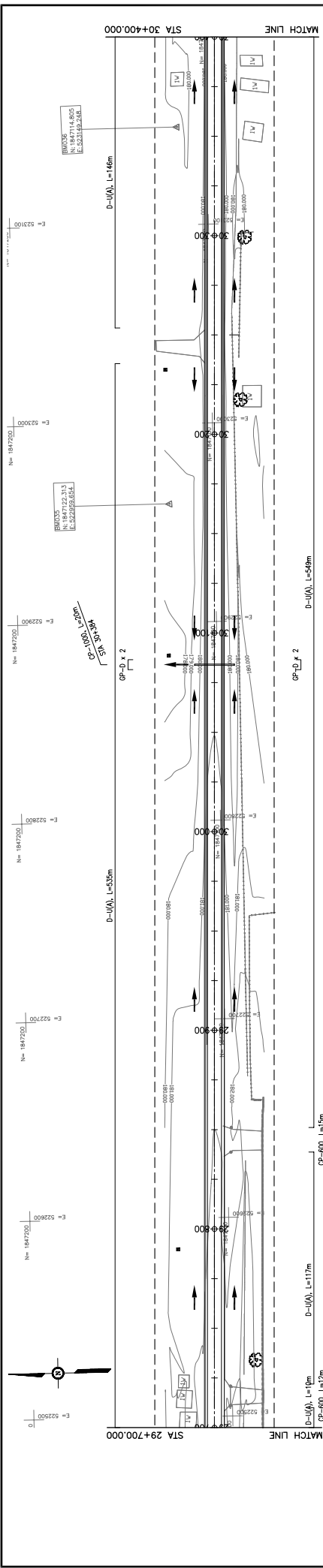
  

THE PROJECT FOR IMPROVEMENT OF NATIONAL ROAD No.9 AS EAST-WEST ECONOMIC CORRIDOR IN LAO PDR	
MINISTRY OF PUBLIC WORKS AND TRANSPORT LAO PEOPLE'S DEMOCRATIC REPUBLIC	
JAPAN INTERNATIONAL COOPERATION AGENCY THE CONSORTIUM OF ORIENTAL CONSULTANTS CO., LTD. INTERNATIONAL DEVELOPMENT CENTER OF JAPAN	
DRAWING TITLE PLAN & PROFILE SECTION 1: STA. 29+000 - 29+700	
SIGNATURE	
NAME	
TITLE	
PREPARED BY	
CHECKED BY	
APPROVED BY	

DRAWING NO. C-102
----------------------





STATION	PROPOSED HEIGHT	GROUND LEVEL	GRADIENT
29+700	182.411	182.806	
+725	182.317	182.739	
+750	182.223	182.672	
+775	182.162	182.605	
+800	182.108	182.538	
+825	182.054	182.471	
+850	181.999	182.404	
+875	181.945	182.336	
+900	181.871	182.268	
+925	181.720	182.105	
+950	181.568	181.962	
+975	181.417	181.808	
+1000	181.264	181.654	
+1025	181.113	181.500	
+1050	180.990	181.351	
+1075	180.872	181.227	
+1100	180.753	181.131	
+125	180.635	181.082	
+150	180.515	181.016	
+175	180.439	180.972	
+200	180.433	180.929	
+225	180.446	180.885	
+250	180.416	180.841	
+275	180.398	180.797	
+300	180.356	180.753	
+325	180.325	180.710	
+350	180.294	180.666	
+375	180.264	180.622	
30+400	180.226	180.578	

CROSS SECTION TYPE: TYPE RF-35

SUPERELEVATION: LEFT SIDE: -3.000%; RIGHT SIDE: -3.000%

CURVE BAND: R=inf.

**JAPAN INTERNATIONAL COOPERATION AGENCY**  
 THE CONSORTIUM OF  
**ORIENTAL CONSULTANTS CO., LTD.**  
 INTERNATIONAL DEVELOPMENT CENTER OF JAPAN

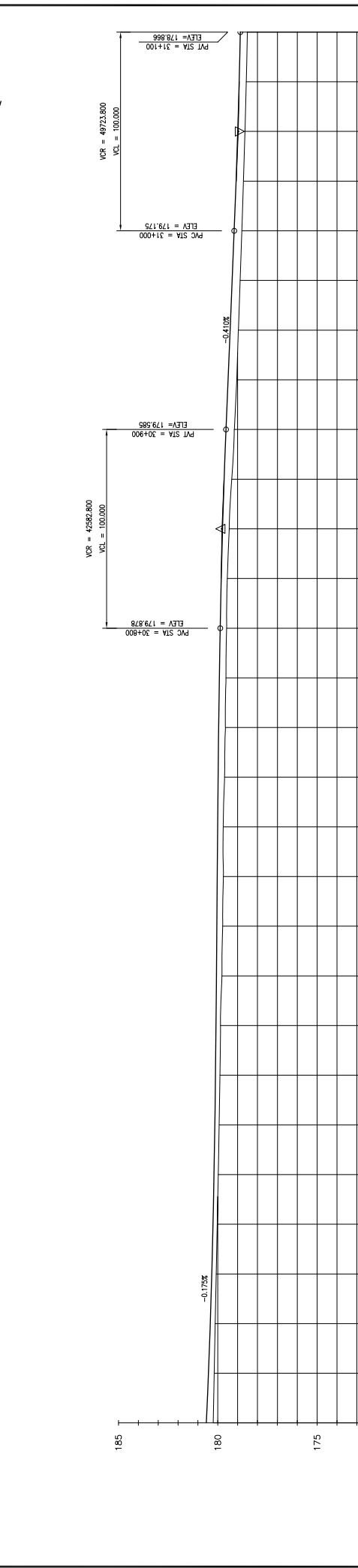
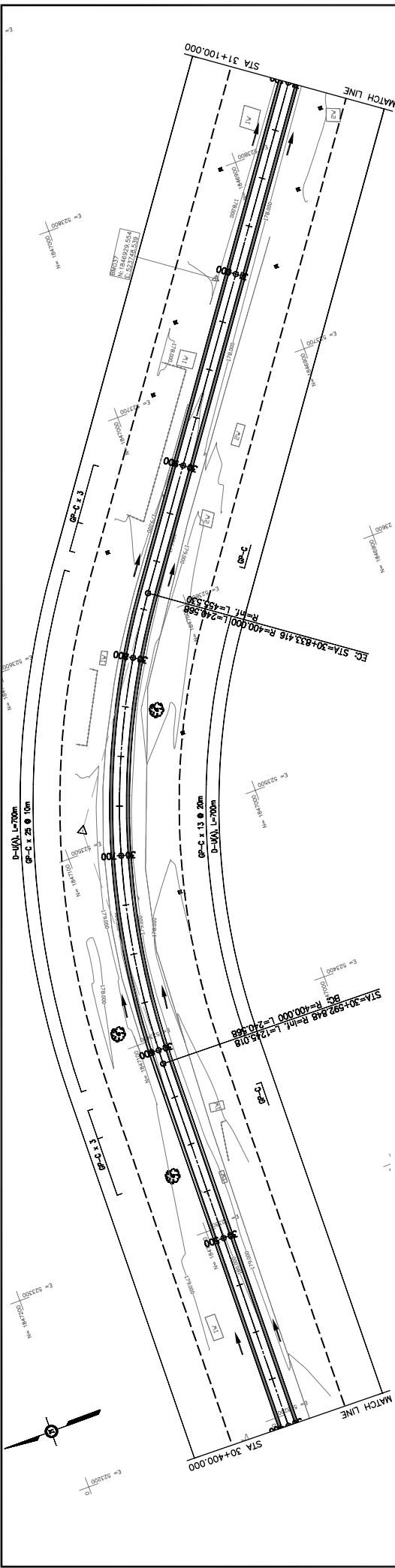
**MINISTRY OF PUBLIC WORKS AND TRANSPORT**  
**LAO PEOPLE'S DEMOCRATIC REPUBLIC**

**THE PROJECT FOR IMPROVEMENT OF NATIONAL ROAD No.9**  
**AS EAST-WEST ECONOMIC CORRIDOR IN LAO PDR**

SECTION TITLE: PLAN & PROFILE  
 SECTION 1: STA. 29+700 - 30+400

REV. No.	DATE	DESCRIPTION

SCALE: H=1:2,000  
 V=1:200  
 DRAWING No.: C-103



GRADIENT	PROPOSED HEIGHT	GROUND LEVEL	STATION	CURVE BAND	SUPERELEVATION LEFT SIDE RIGHT SIDE	CROSS SECTION TYPE
-0.12%	180.578	180.578	30+400	R=inf.	3.000%	TYPE RF-35
	180.228	180.228	30+400	R=inf.	3.000%	
	180.178	180.534	4+25	R=inf.	3.000%	
	180.129	180.491	4+50	R=inf.	3.000%	
	180.080	180.447	4+75	R=inf.	3.000%	
	180.030	180.403	50+500	R=inf.	3.000%	
	179.978	180.359	4+525	R=inf.	3.000%	
	179.928	180.315	4+550	R=inf.	3.000%	
	179.888	180.272	4+575	R=inf.	3.000%	
	179.863	180.228	30+600	R=inf.	3.000%	
	179.786	180.184	4+625	R=inf.	3.000%	
	179.750	180.140	4+650	R=inf.	3.000%	
	179.712	180.097	4+675	R=inf.	3.000%	
	179.724	180.053	30+700	R=inf.	3.000%	
	179.651	180.009	4+725	R=inf.	3.000%	
	179.615	179.965	4+750	R=inf.	3.000%	
	179.583	179.921	4+775	R=inf.	3.000%	
	179.549	179.878	30+800	R=inf.	3.000%	
	179.424	179.761	4+850	R=inf.	3.000%	
	179.297	179.680	4+875	R=inf.	3.000%	
	179.169	179.585	30+900	R=inf.	3.000%	
	179.041	179.483	4+925	R=inf.	3.000%	
	178.965	179.380	4+950	R=inf.	3.000%	
	178.879	179.278	4+975	R=inf.	3.000%	
	178.794	179.175	31+000	R=inf.	3.000%	
	178.710	179.079	4+025	R=inf.	3.000%	
	178.627	178.995	4+050	R=inf.	3.000%	
	178.514	178.924	4+075	R=inf.	3.000%	
	178.866	178.866	31+100	R=inf.	3.000%	

**MINISTRY OF PUBLIC WORKS AND TRANSPORT**  
**LAO PEOPLE'S DEMOCRATIC REPUBLIC**

SCALE: H=1:2,000  
V=1:200

**THE PROJECT FOR IMPROVEMENT OF NATIONAL ROAD No.9  
AS EAST-WEST ECONOMIC CORRIDOR IN LAO PDR**

DRAWING TITLE: **PLAN & PROFILE**  
SECTION 1: STA. 30+400 - 31+100

REV. No.	DATE	DESCRIPTION

TITLE: \_\_\_\_\_

PREPARED BY: \_\_\_\_\_

CHECKED BY: \_\_\_\_\_

APPROVED BY: \_\_\_\_\_

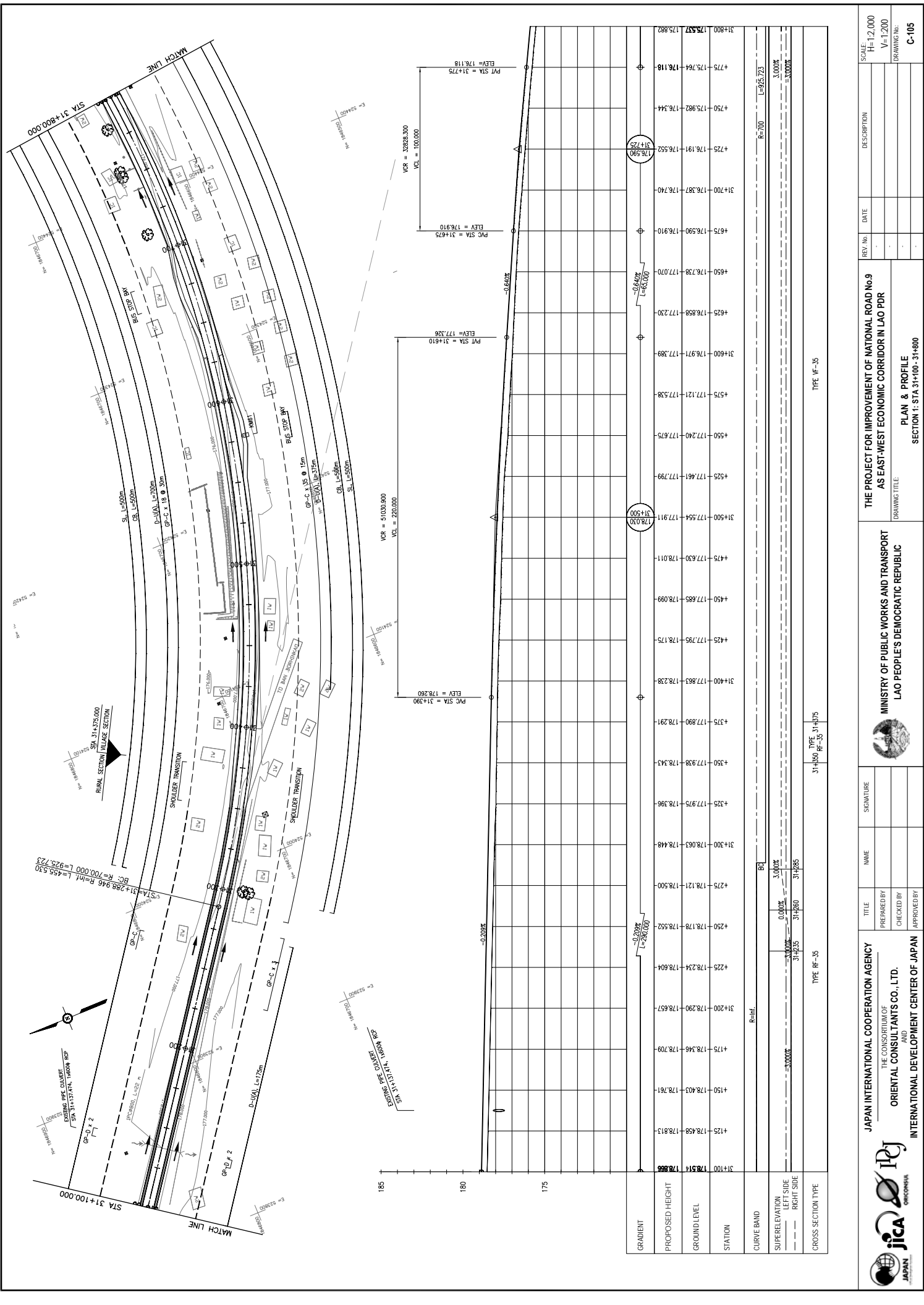
SIGNATURE: \_\_\_\_\_

NAME: \_\_\_\_\_

DATE: \_\_\_\_\_

DESCRIPTION: \_\_\_\_\_

C-104



STATION	GROUND LEVEL	PROPOSED HEIGHT
31+100	178.514	178.552
+125	178.458	178.813
+150	178.403	178.761
+175	178.346	178.709
31+200	178.290	178.657
+225	178.234	178.604
+250	178.178	178.552
+275	178.121	178.500
31+300	178.063	178.448
+325	177.975	178.396
+350	177.938	178.343
+375	177.890	178.291
31+400	177.863	178.238
+425	177.795	178.175
+450	177.688	178.099
+475	177.630	178.011
31+500	177.554	177.911
31+500	178.030	178.030
+525	177.461	177.799
+550	177.240	177.675
+575	177.121	177.538
31+600	176.971	177.389
+625	176.858	177.230
+650	176.738	177.070
+675	176.590	176.910
31+700	176.387	176.740
+725	176.191	176.552
31+725	176.590	176.590
+750	175.982	176.344
+775	175.764	176.118
31+800	175.537	175.882

**JAPAN INTERNATIONAL COOPERATION AGENCY**  
THE CONSORTIUM OF  
**ORIENTAL CONSULTANTS CO., LTD.**  
INTERNATIONAL DEVELOPMENT CENTER OF JAPAN

**MINISTRY OF PUBLIC WORKS AND TRANSPORT**  
LAO PEOPLE'S DEMOCRATIC REPUBLIC

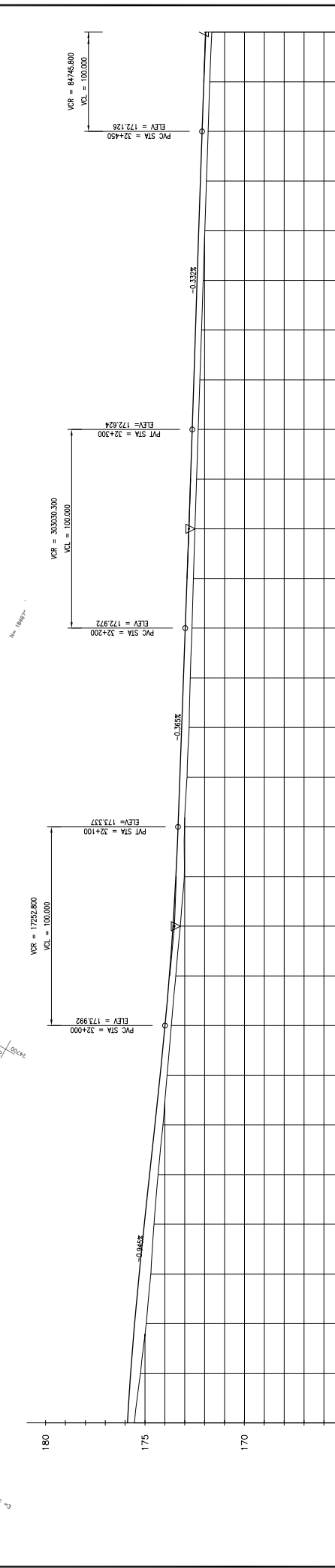
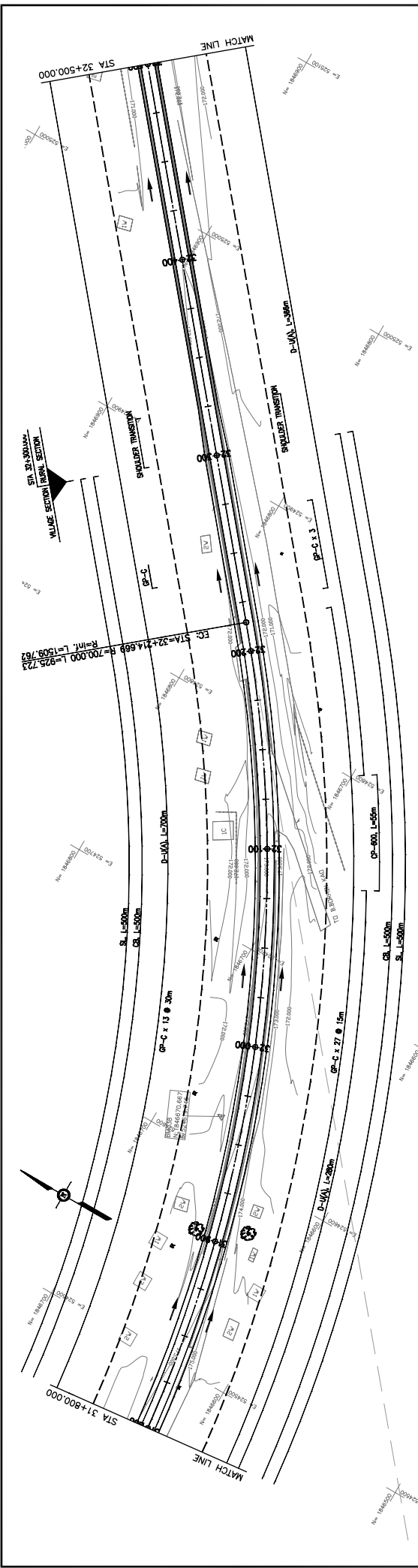
**THE PROJECT FOR IMPROVEMENT OF NATIONAL ROAD No.9  
AS EAST-WEST ECONOMIC CORRIDOR IN LAO PDR**

**PLAN & PROFILE**  
SECTION 1: STA 31+100 - 31+800

REV. No.	DATE	DESCRIPTION

SCALE: H=1:2,000 V=1:200

DRAWING No. **C-105**



GRADIENT	PROPOSED HEIGHT	GROUND LEVEL	STATION
-0.845%	175.537	175.582	31+800
-0.845%	174.544	174.937	31+900
-0.845%	174.706	175.173	31+875
-0.845%	174.933	175.409	31+850
-0.845%	175.227	175.645	31+825
-0.845%	175.537	175.882	31+800
0.000%	173.592	173.592	32+000
0.000%	173.448	173.774	32+025
0.000%	173.675	173.992	32+050
0.000%	173.448	173.774	32+075
0.000%	173.675	173.992	32+100
0.000%	173.019	173.337	32+125
0.000%	172.881	173.246	32+150
0.000%	172.778	173.155	32+175
0.000%	172.501	172.864	32+200
0.000%	172.633	172.972	32+225
0.000%	172.565	172.882	32+250
0.000%	172.489	172.791	32+275
0.000%	172.407	172.708	32+300
0.000%	172.323	172.624	32+325
0.000%	172.240	172.541	32+350
0.000%	172.157	172.458	32+375
0.000%	172.074	172.375	32+400
0.000%	171.991	172.292	32+425
0.000%	171.907	172.209	32+450
0.000%	171.825	172.126	32+475
0.000%	171.745	172.039	32+500

CROSS SECTION TYPE: TYPE WF-35 (STA 31+800 - 32+000) and TYPE RR-30 (STA 32+000 - 32+500)

SUPERELEVATION: LEFT SIDE 3.000%, RIGHT SIDE 3.000%

MINISTRY OF PUBLIC WORKS AND TRANSPORT  
LAO PEOPLE'S DEMOCRATIC REPUBLIC

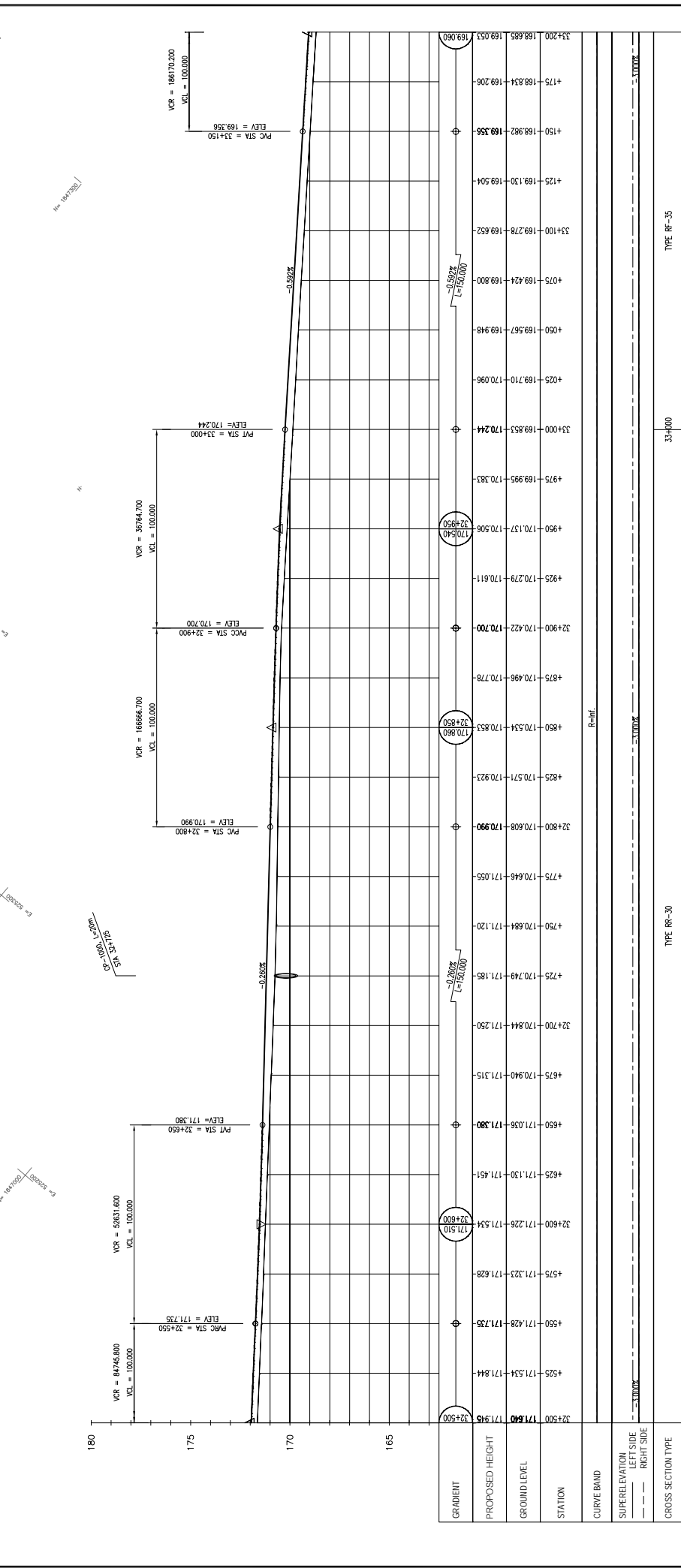
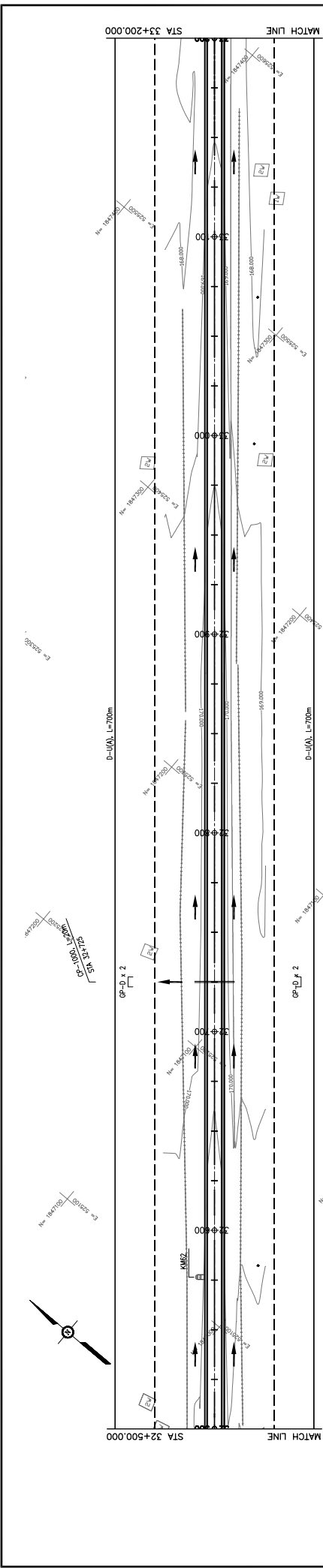
JAPAN INTERNATIONAL COOPERATION AGENCY  
THE CONSORTIUM OF  
ORIENTAL CONSULTANTS CO., LTD.  
INTERNATIONAL DEVELOPMENT CENTER OF JAPAN

THE PROJECT FOR IMPROVEMENT OF NATIONAL ROAD No.9  
AS EAST-WEST ECONOMIC CORRIDOR IN LAO PDR

SECTION 1: STA. 31+800 - 32+500  
PLAN & PROFILE

SCALE: H=1:2,000, V=1:200

DRAWING NO.: C-106



REV No.	DATE	DESCRIPTION

SCALE: H=1:2,000 V=1:200	DRAWING No. C-107
-----------------------------	-------------------

THE PROJECT FOR IMPROVEMENT OF NATIONAL ROAD No.9 AS EAST-WEST ECONOMIC CORRIDOR IN LAO PDR	MINISTRY OF PUBLIC WORKS AND TRANSPORT LAO PEOPLE'S DEMOCRATIC REPUBLIC
--	--

JAPAN INTERNATIONAL COOPERATION AGENCY THE CONSORTIUM OF ORIENTAL CONSULTANTS CO., LTD. INTERNATIONAL DEVELOPMENT CENTER OF JAPAN	SIGNATURE	NAME	TITLE

APPROVED BY	CHECKED BY	PREPARED BY

TYPE RR-30	TYPE RR-35
------------	------------