

STATION	PROPOSED HEIGHT	GROUND LEVEL	GRADIENT
52+100	185.398	185.763	0.214%
52+125	185.303	185.667	
52+150	185.178	185.563	
52+175	185.052	185.450	
52+200	184.927	185.328	
52+225	184.801	185.197	
52+250	184.676	185.057	
52+275	184.550	184.925	
52+300	184.425	184.785	
52+325	184.348	184.728	
52+350	184.287	184.653	
52+375	184.228	184.609	
52+400	184.165	184.556	
52+425	184.104	184.502	
52+450	184.043	184.449	
52+475	183.981	184.395	
52+500	183.933	184.341	
52+525	183.894	184.288	
52+550	183.855	184.234	
52+575	183.817	184.200	
52+600	183.779	184.204	
52+625	183.740	184.246	
52+650	183.692	184.327	
52+675	184.068	184.447	
52+700	184.243	184.604	
52+725	184.419	184.800	
52+750	184.594	185.035	
52+775	184.822	185.289	
52+800	185.087	185.542	

MINISTRY OF PUBLIC WORKS AND TRANSPORT
LAO PEOPLE'S DEMOCRATIC REPUBLIC

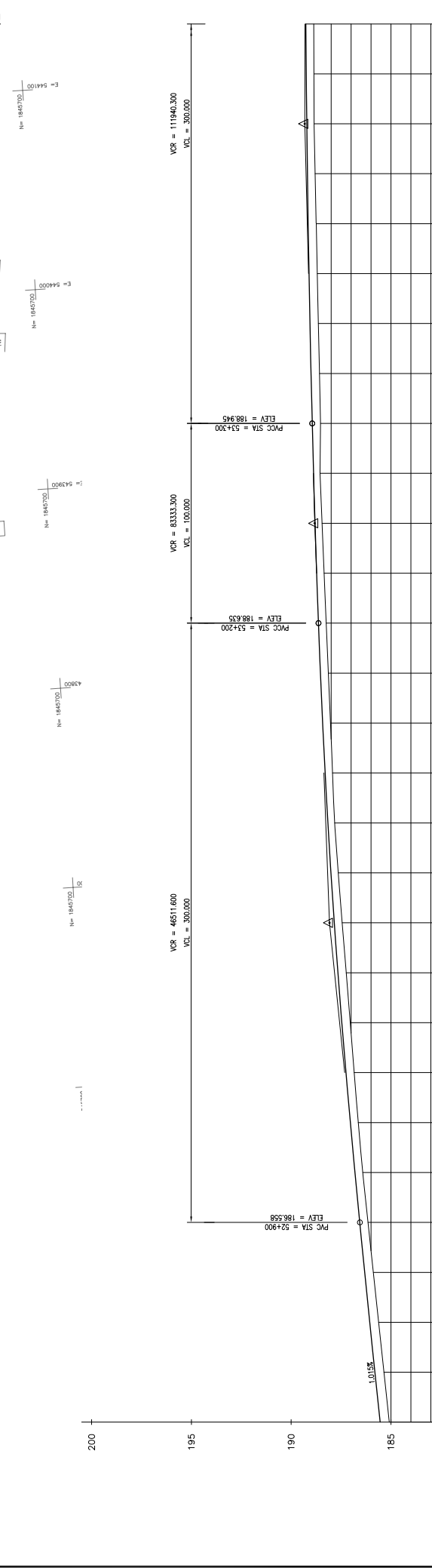
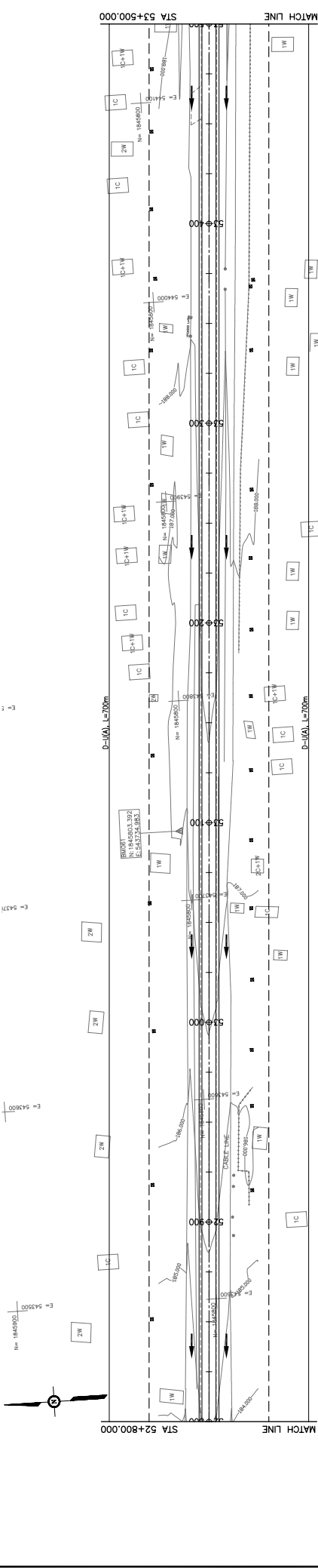
THE PROJECT FOR IMPROVEMENT OF NATIONAL ROAD No.9
AS EAST-WEST ECONOMIC CORRIDOR IN LAO PDR

DRAWING TITLE: **PLAN & PROFILE**
SECTION 1: STA 52+100 - 52+800

SCALE: H=1:2,000 V=1:200	DATE	DESCRIPTION
REV. No.	DATE	DESCRIPTION

DRAWING No. **C-135**





STATION	GROUND LEVEL	PROPOSED HEIGHT	GRADIENT
52+800	185.087	185.542	
4825	185.553	185.796	
4850	185.618	186.050	
4875	185.884	186.304	
52+900	186.150	186.558	
4925	186.416	186.805	
4950	186.644	187.038	
4975	186.842	187.258	
53+000	187.042	187.465	
4025	187.242	187.658	
4050	187.443	187.838	
4075	187.643	188.005	
53+100	187.821	188.158	
4125	187.930	188.297	
4150	188.033	188.423	
4175	188.139	188.536	
53+200	188.243	188.635	
4225	188.348	188.724	
4250	188.452	188.805	
4275	188.557	188.879	
53+300	188.530	188.945	
4325	188.584	189.005	
4350	188.638	189.059	
4375	188.692	189.107	
53+400	188.745	189.150	
4425	188.799	189.188	
4450	188.849	189.219	
4475	188.863	189.246	
53+500	188.864	189.266	

TYPE: RF-35

CROSS SECTION TYPE

SUPERELEVATION LEFT SIDE

SUPERELEVATION RIGHT SIDE

CURVE BAND

JAPAN INTERNATIONAL COOPERATION AGENCY
 THE CONSORTIUM OF
 ORIENTAL CONSULTANTS CO., LTD.
 INTERNATIONAL DEVELOPMENT CENTER OF JAPAN

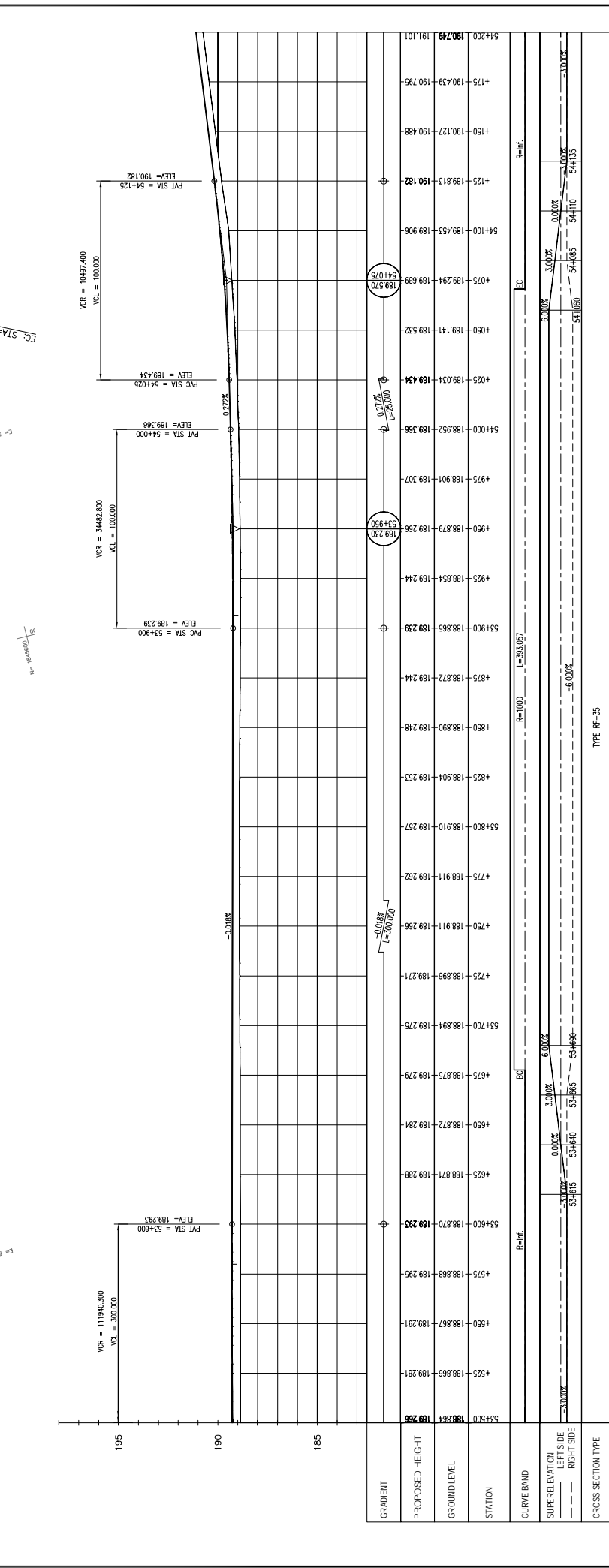
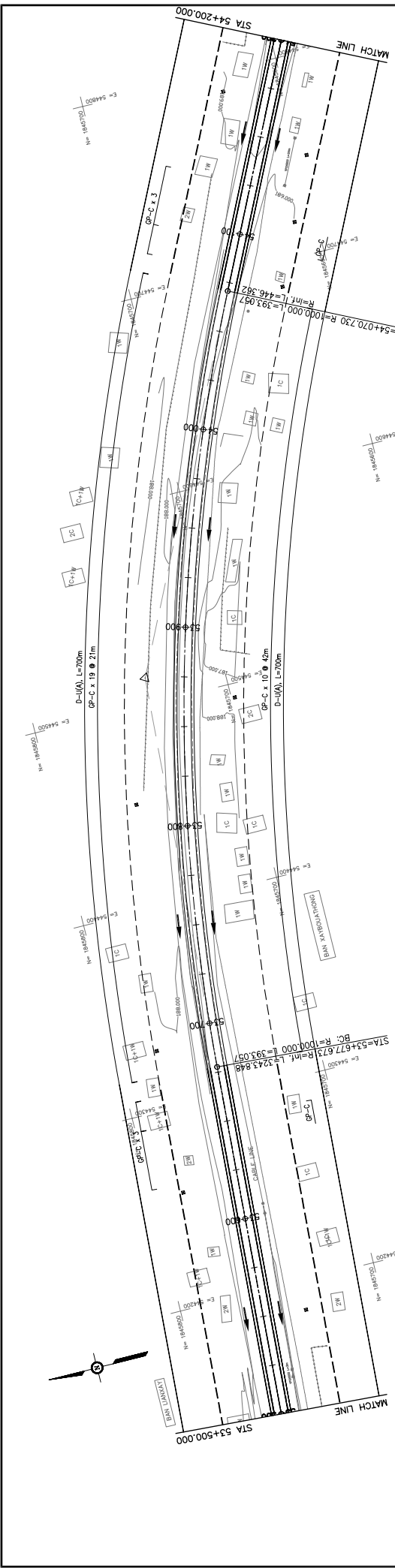
MINISTRY OF PUBLIC WORKS AND TRANSPORT
 LAO PEOPLE'S DEMOCRATIC REPUBLIC

THE PROJECT FOR IMPROVEMENT OF NATIONAL ROAD No.9
 AS EAST-WEST ECONOMIC CORRIDOR IN LAO PDR

PLAN & PROFILE
 SECTION 1: STA 52+900 - 53+500

DRAWING TITLE
 DRAWING NO.
 DATE
 REV. No.
 DESCRIPTION
 SCALE: H=1:2,000
 V=1:200
 DRAWING No.: C-136

SIGNATURE
 NAME
 TITLE
 PREPARED BY
 CHECKED BY
 APPROVED BY

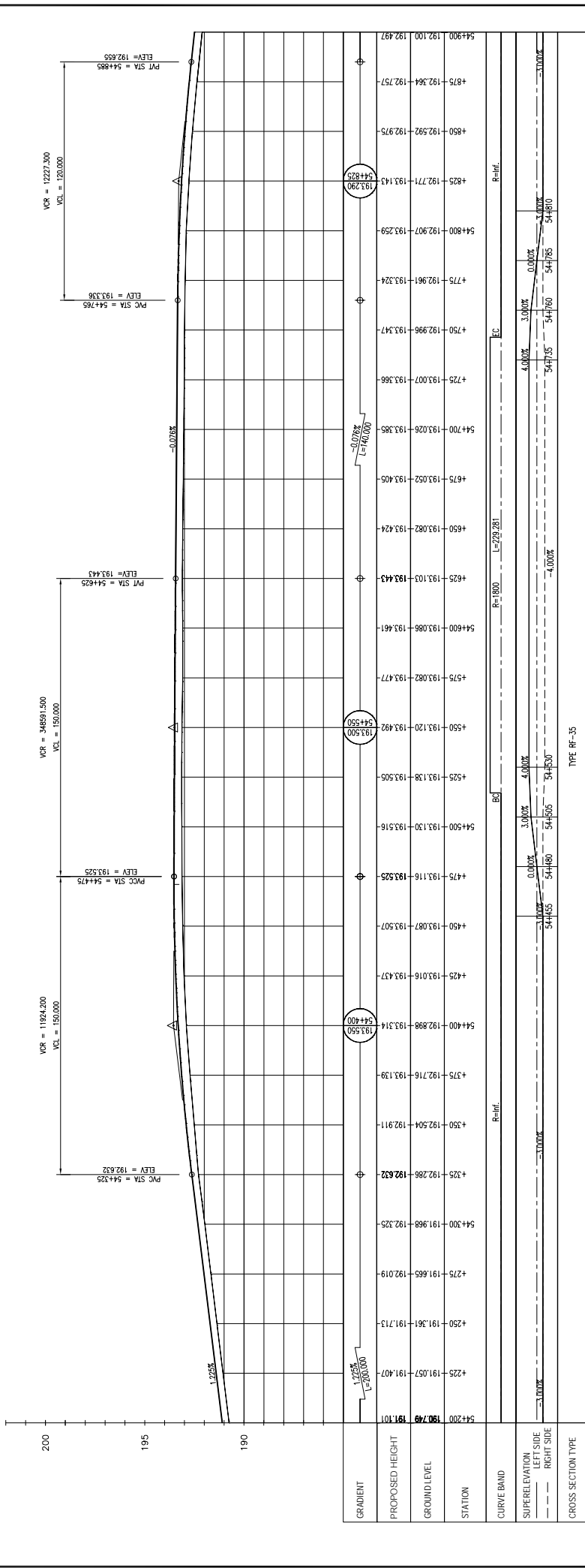
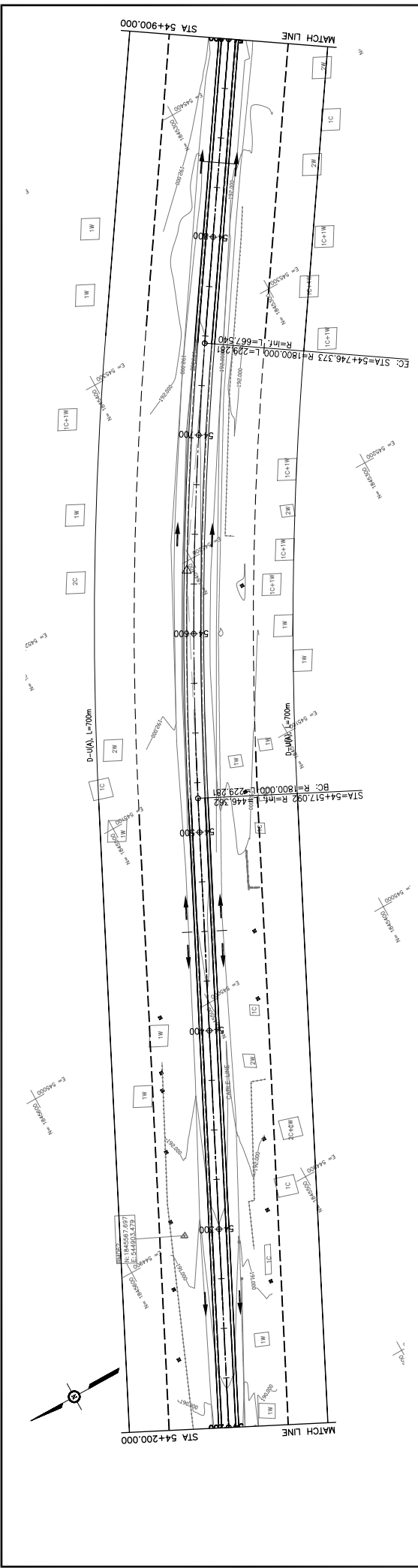


REV No.	DATE	DESCRIPTION	SCALE:
1			H=1:2,000
2			V=1:200
3			
4			

THE PROJECT FOR IMPROVEMENT OF NATIONAL ROAD No.9 AS EAST-WEST ECONOMIC CORRIDOR IN LAO PDR	
MINISTRY OF PUBLIC WORKS AND TRANSPORT LAO PEOPLE'S DEMOCRATIC REPUBLIC	
DRAWING TITLE PLAN & PROFILE SECTION 1: STA 53+500 - 54+200	
DRAWING No.	
DATE	
DESCRIPTION	
SCALE:	
H=1:2,000 V=1:200	
DRAWING No.	
C-137	

JAPAN INTERNATIONAL COOPERATION AGENCY
 THE CONSORTIUM OF
 ORIENTAL CONSULTANTS CO., LTD.
 INTERNATIONAL DEVELOPMENT CENTER OF JAPAN

SIGNATURE: _____
 NAME: _____
 TITLE: _____
 PREPARED BY: _____
 CHECKED BY: _____
 APPROVED BY: _____



GRADIENT	1.22%	L=200.000
SUPERELEVATION LEFT SIDE	3.00%	L=100.000
SUPERELEVATION RIGHT SIDE	0.00%	L=100.000
CROSS SECTION TYPE	TYPE RH-35	

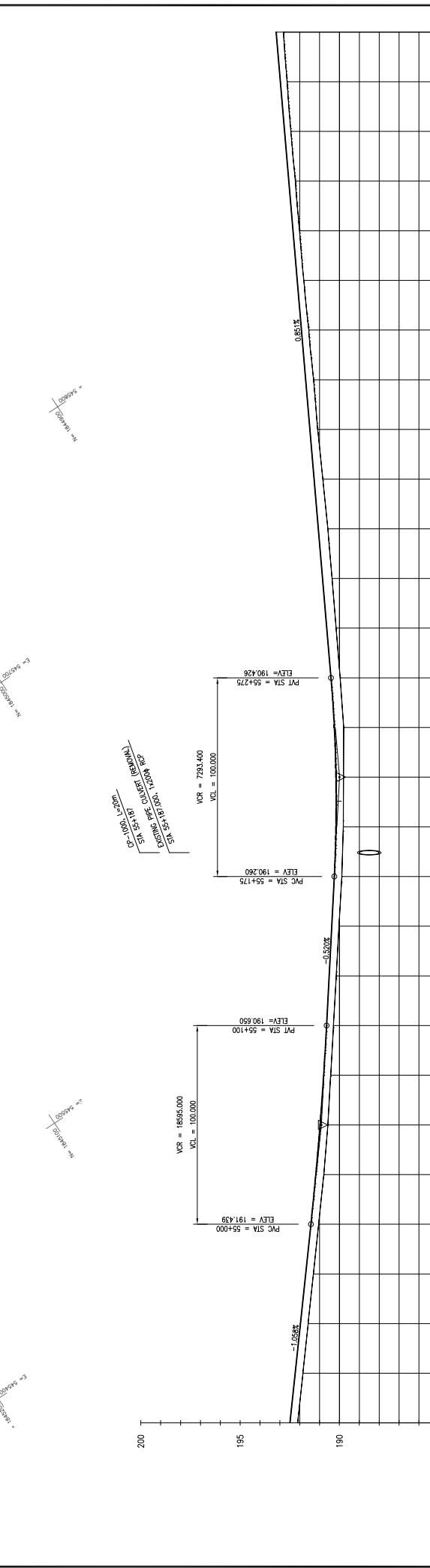
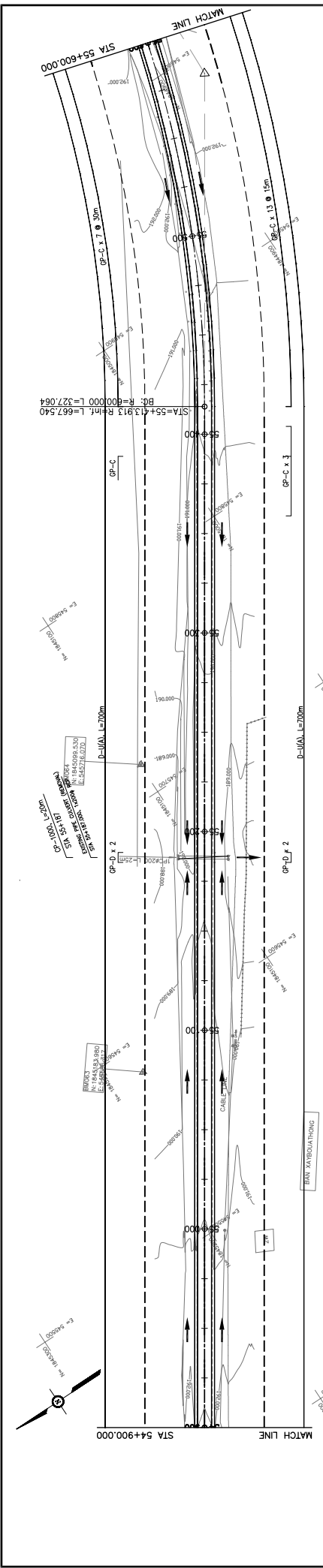
JAPAN INTERNATIONAL COOPERATION AGENCY
 THE CONSORTIUM OF
ORIENTAL CONSULTANTS CO., LTD.
 INTERNATIONAL DEVELOPMENT CENTER OF JAPAN

MINISTRY OF PUBLIC WORKS AND TRANSPORT
LAO PEOPLE'S DEMOCRATIC REPUBLIC

THE PROJECT FOR IMPROVEMENT OF NATIONAL ROAD No.9
AS EAST-WEST ECONOMIC CORRIDOR IN LAO PDR

PLAN & PROFILE
SECTION 1: STA 54+200 - 54+900

REV. No.	DATE	DESCRIPTION	SCALE:
1			H=1:2,000 V=1:200
2			DRAWING No. C-138



STATION	PROPOSED HEIGHT	GROUND LEVEL	GRADIENT
54+900	192.100	192.497	-1.058%
4+925	191.837	192.230	-1.157%
4+950	191.574	191.968	-1.360%
4+975	191.310	191.703	-1.360%
55+000	191.047	191.439	-1.500%
4+025	190.783	191.191	-1.500%
4+050	190.583	190.977	-1.500%
4+075	190.442	190.797	-1.500%
55+100	190.300	190.600	-1.500%
4+125	190.159	190.520	-1.500%
4+150	190.020	190.390	-1.500%
4+175	189.879	190.280	-1.500%
55+200	189.806	190.173	-1.500%
4+225	189.795	190.171	-1.500%
4+250	189.784	190.256	-1.500%
4+275	189.963	190.426	-1.500%
55+300	190.166	190.638	-1.500%
4+325	190.368	190.851	-1.500%
4+350	190.581	191.064	-1.500%
4+375	190.837	191.277	-1.500%
55+400	191.034	191.489	-1.500%
4+425	191.298	191.702	-1.500%
4+450	191.540	191.915	-1.500%
4+475	191.791	192.128	-1.500%
55+500	192.008	192.341	-1.500%
4+525	192.215	192.553	-1.500%
4+550	192.442	192.766	-1.500%
4+575	192.631	192.979	-1.500%
55+600	192.813	193.192	-1.500%

TYPE: RP-35

CROSS SECTION TYPE

SUPERELEVATION LEFT SIDE

SUPERELEVATION RIGHT SIDE

CURVE BAND

STATION

GROUND LEVEL

PROPOSED HEIGHT

GRADIENT

JAPAN INTERNATIONAL COOPERATION AGENCY
 THE CONSORTIUM OF
 ORIENTAL CONSULTANTS CO., LTD.
 INTERNATIONAL DEVELOPMENT CENTER OF JAPAN

MINISTRY OF PUBLIC WORKS AND TRANSPORT
 LAO PEOPLE'S DEMOCRATIC REPUBLIC

THE PROJECT FOR IMPROVEMENT OF NATIONAL ROAD No.9
 AS EAST-WEST ECONOMIC CORRIDOR IN LAO PDR

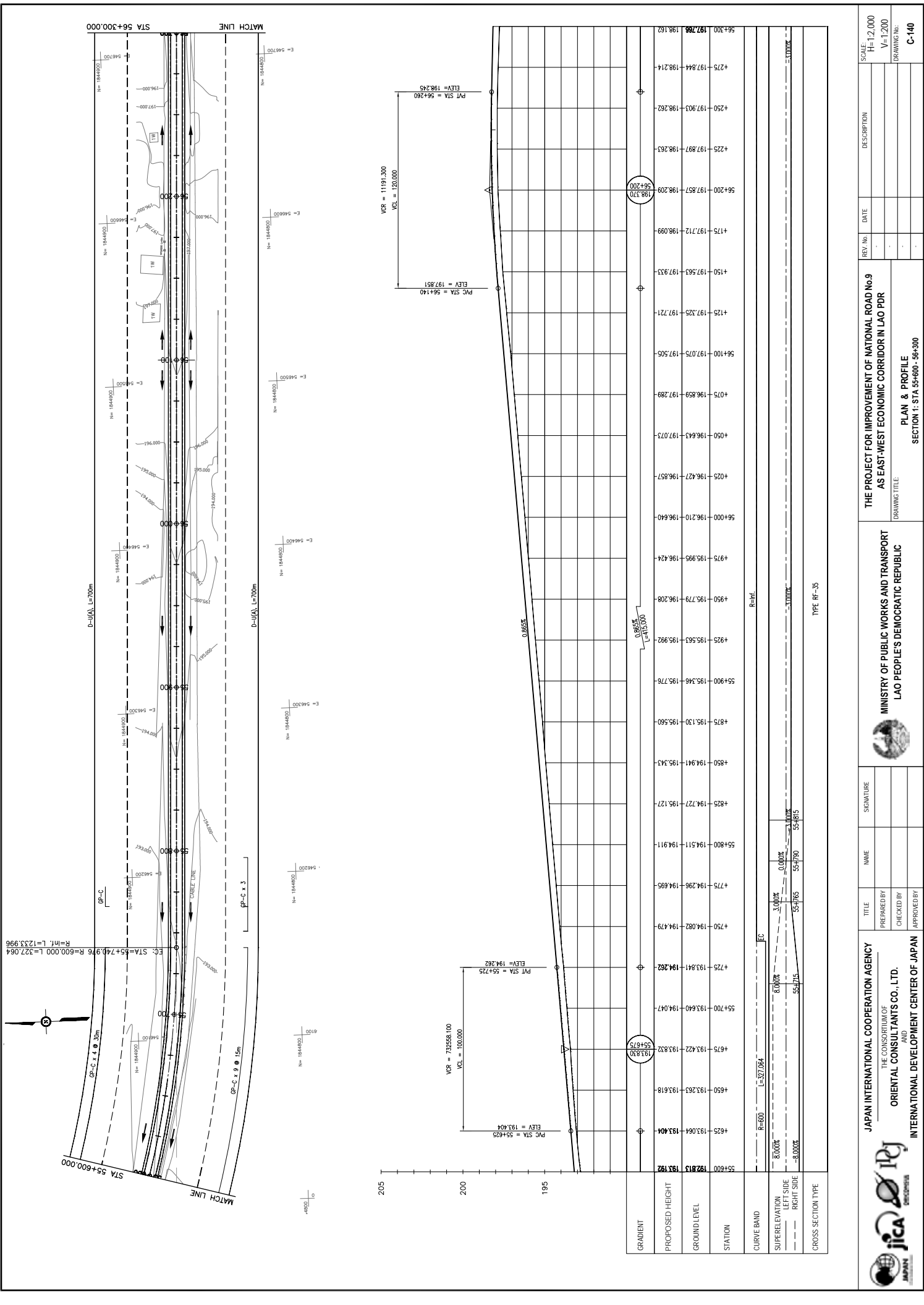
PLAN & PROFILE
 SECTION 1: STA 54+900 - 55+600

DRAWING TITLE

REV. No.	DATE	DESCRIPTION
1		
2		
3		

SCALE: H=1:2,000
 V=1:200

DRAWING No.: C-139



STATION	PROPOSED HEIGHT	GROUND LEVEL
55+600	192.813	193.192
55+700	193.841	194.282
55+800	194.222	193.832
55+900	193.263	193.618
56+000	193.064	193.404
56+100	194.082	194.479
56+200	194.296	194.693
56+300	194.779	195.208
56+400	195.346	195.776
56+500	195.563	195.992
56+600	195.779	196.208
56+700	195.995	196.424
56+800	196.210	196.640
56+900	196.427	196.857
57+000	196.643	197.073
57+100	196.859	197.289
57+200	197.075	197.505
57+300	197.292	197.721
57+400	197.508	197.937
57+500	197.724	198.153
57+600	197.940	198.369
57+700	198.156	198.585
57+800	198.372	198.801
57+900	198.588	199.017
58+000	198.804	199.233
58+100	199.020	199.449
58+200	199.236	199.665
58+300	199.452	199.881
58+400	199.668	200.097
58+500	199.884	200.313
58+600	200.100	200.529
58+700	200.316	200.745
58+800	200.532	200.961
58+900	200.748	201.177
59+000	200.964	201.393
59+100	201.180	201.609
59+200	201.396	201.825
59+300	201.612	202.041
59+400	201.828	202.257
59+500	202.044	202.473
59+600	202.260	202.689
59+700	202.476	202.905
59+800	202.692	203.121
59+900	202.908	203.337
60+000	203.124	203.553
60+100	203.340	203.769
60+200	203.556	203.985
60+300	203.772	204.201
60+400	203.988	204.417
60+500	204.204	204.633
60+600	204.420	204.849
60+700	204.636	205.065
60+800	204.852	205.281
60+900	205.068	205.497
61+000	205.284	205.713

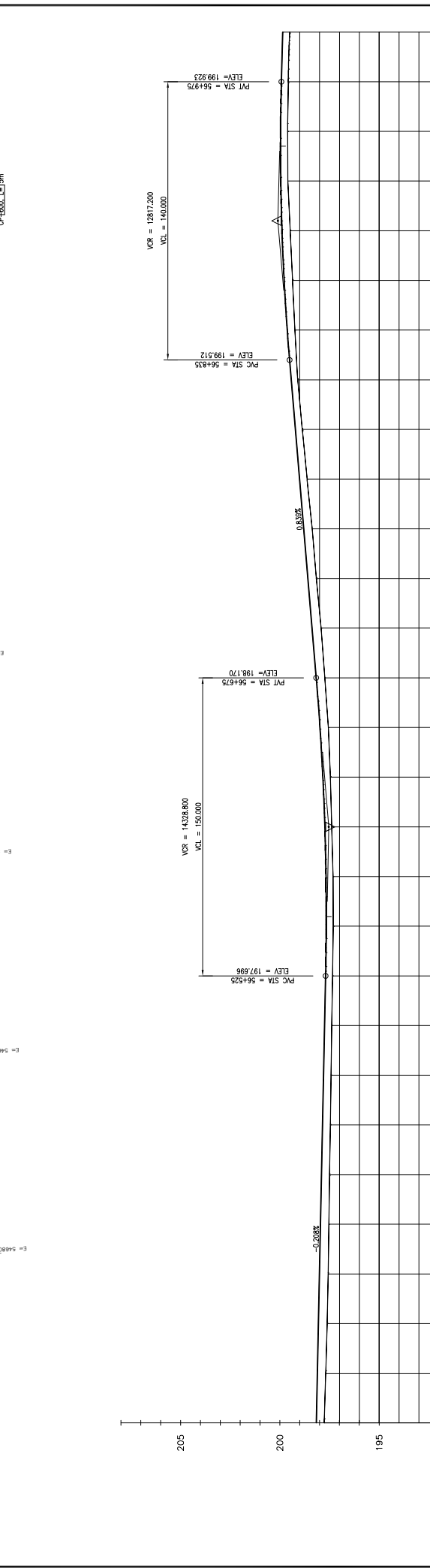
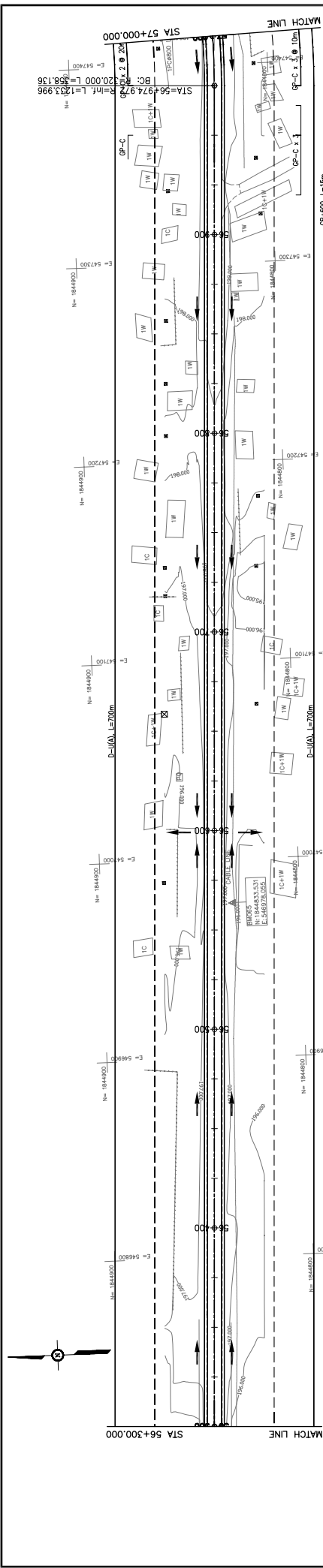
JAPAN INTERNATIONAL COOPERATION AGENCY
THE CONSORTIUM OF
ORIENTAL CONSULTANTS CO., LTD.
INTERNATIONAL DEVELOPMENT CENTER OF JAPAN

MINISTRY OF PUBLIC WORKS AND TRANSPORT
LAO PEOPLE'S DEMOCRATIC REPUBLIC

PLAN & PROFILE
SECTION 1: STA 55+600 - 56+300

REV. No.	DATE	DESCRIPTION

SCALE: H=1:2,000
V=1:200
DRAWING No. **C-140**



STATION	GROUND LEVEL	PROPOSED HEIGHT	GRADIENT
56+300	197.765	198.182	
4325	197.690	198.111	
4350	197.615	198.059	
4375	197.568	198.007	
56+400	197.531	197.955	
4425	197.494	197.903	
4450	197.458	197.851	
4475	197.420	197.799	
56+500	197.383	197.747	
4525	197.347	197.696	
4550	197.310	197.646	
4575	197.273	197.594	
56+600	197.236	197.540	
4625	197.199	197.491	
4650	197.162	197.441	
4675	197.125	197.391	
56+700	197.088	197.341	
4725	197.051	197.291	
4750	197.014	197.241	
4775	196.977	197.191	
56+800	196.940	197.141	
4825	196.903	197.091	
4850	196.866	197.041	
4875	196.829	196.991	
56+900	196.792	196.941	
4925	196.855	196.891	
4950	196.818	196.841	
4975	196.781	196.791	
57+000	196.744	196.741	

TYPE: Rf-35

SCALE: H=1:2,000
V=1:200

DRIVING NO.: C-141

THE PROJECT FOR IMPROVEMENT OF NATIONAL ROAD No.9
AS EAST-WEST ECONOMIC CORRIDOR IN LAO PDR

MINISTRY OF PUBLIC WORKS AND TRANSPORT
LAO PEOPLE'S DEMOCRATIC REPUBLIC

JAPAN INTERNATIONAL COOPERATION AGENCY
THE CONSORTIUM OF
ORIENTAL CONSULTANTS CO., LTD.
INTERNATIONAL DEVELOPMENT CENTER OF JAPAN

PLAN & PROFILE
SECTION 1: STA 56+300 - 57+000

REVISIONS:

REV. NO.	DATE	DESCRIPTION
1		
2		
3		
4		
5		

SIGNATURE: _____

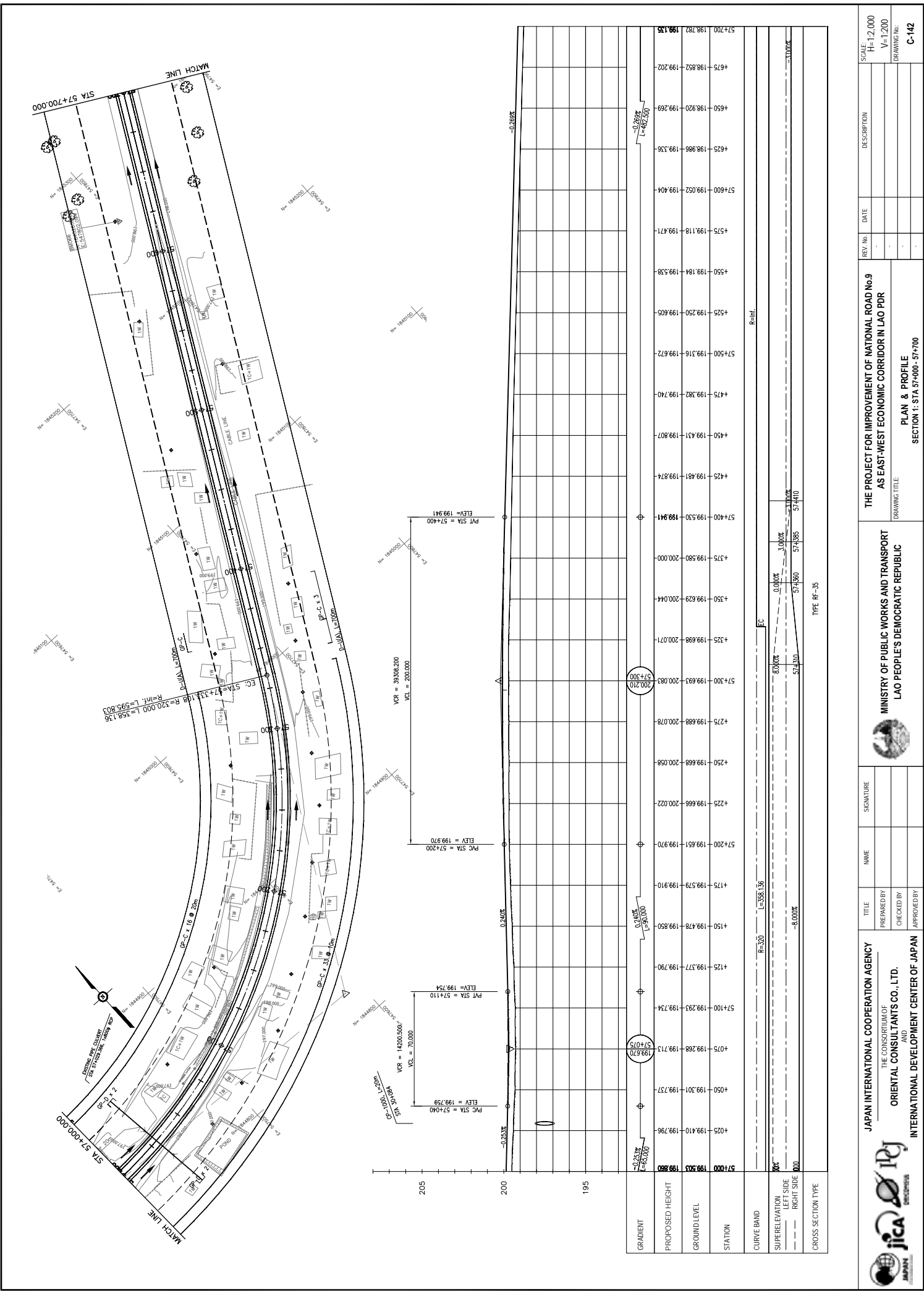
NAME: _____

TITLE: _____

PREPARED BY: _____

CHECKED BY: _____

APPROVED BY: _____



STATION	GROUND LEVEL	PROPOSED HEIGHT
57+000	199.503	199.850
57+025	199.410	199.796
57+050	199.301	199.737
57+075	199.268	199.713
57+100	199.293	199.734
57+125	199.377	199.790
57+150	199.478	199.850
57+175	199.579	199.910
57+200	199.651	199.970
57+225	199.666	200.022
57+250	199.668	200.058
57+275	199.688	200.078
57+300	199.693	200.083
57+325	199.698	200.071
57+350	199.629	200.044
57+375	199.580	200.000
57+400	199.530	199.941
57+425	199.481	199.874
57+450	199.431	199.807
57+475	199.382	199.740
57+500	199.316	199.672
57+525	199.250	199.605
57+550	199.184	199.538
57+575	199.118	199.471
57+600	199.052	199.404
57+625	199.986	199.336
57+650	199.920	199.269
57+675	198.852	199.202
57+700	198.782	199.135

JAPAN INTERNATIONAL COOPERATION AGENCY
 THE CONSORTIUM OF
ORIENTAL CONSULTANTS CO., LTD.
 INTERNATIONAL DEVELOPMENT CENTER OF JAPAN

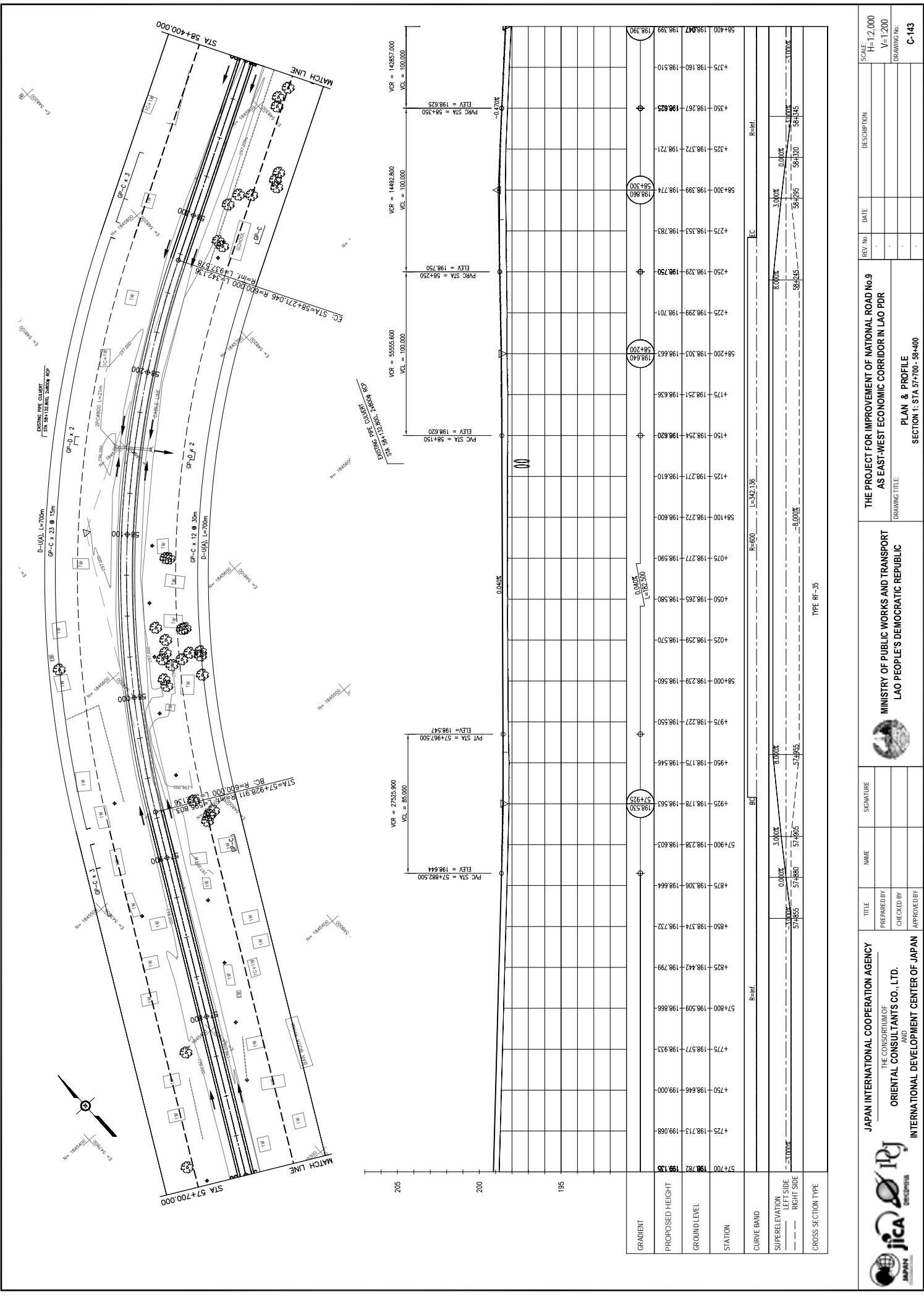
MINISTRY OF PUBLIC WORKS AND TRANSPORT
LAO PEOPLE'S DEMOCRATIC REPUBLIC

THE PROJECT FOR IMPROVEMENT OF NATIONAL ROAD No.9
AS EAST-WEST ECONOMIC CORRIDOR IN LAO PDR

PLAN & PROFILE
SECTION 1: STA 57+000 - 57+700

REV. No.	DATE	DESCRIPTION

SCALE: H=1:2,000
 V=1:200
 DRAWING No. C-142



REV. No.	DATE	DESCRIPTION

SCALE:	H=1:2,000
	V=1:200

PROJECT TITLE:	THE PROJECT FOR IMPROVEMENT OF NATIONAL ROAD No.9 AS EAST-WEST ECONOMIC CORRIDOR IN LAO PDR
DRAWING TITLE:	PLAN & PROFILE SECTION 1: STA 57+700 - 58+400

AGENCY:	JAPAN INTERNATIONAL COOPERATION AGENCY
CLIENT:	THE CONSORTIUM OF ORIENTAL CONSULTANTS CO., LTD.
CLIENT ADDRESS:	INTERNATIONAL DEVELOPMENT CENTER OF JAPAN

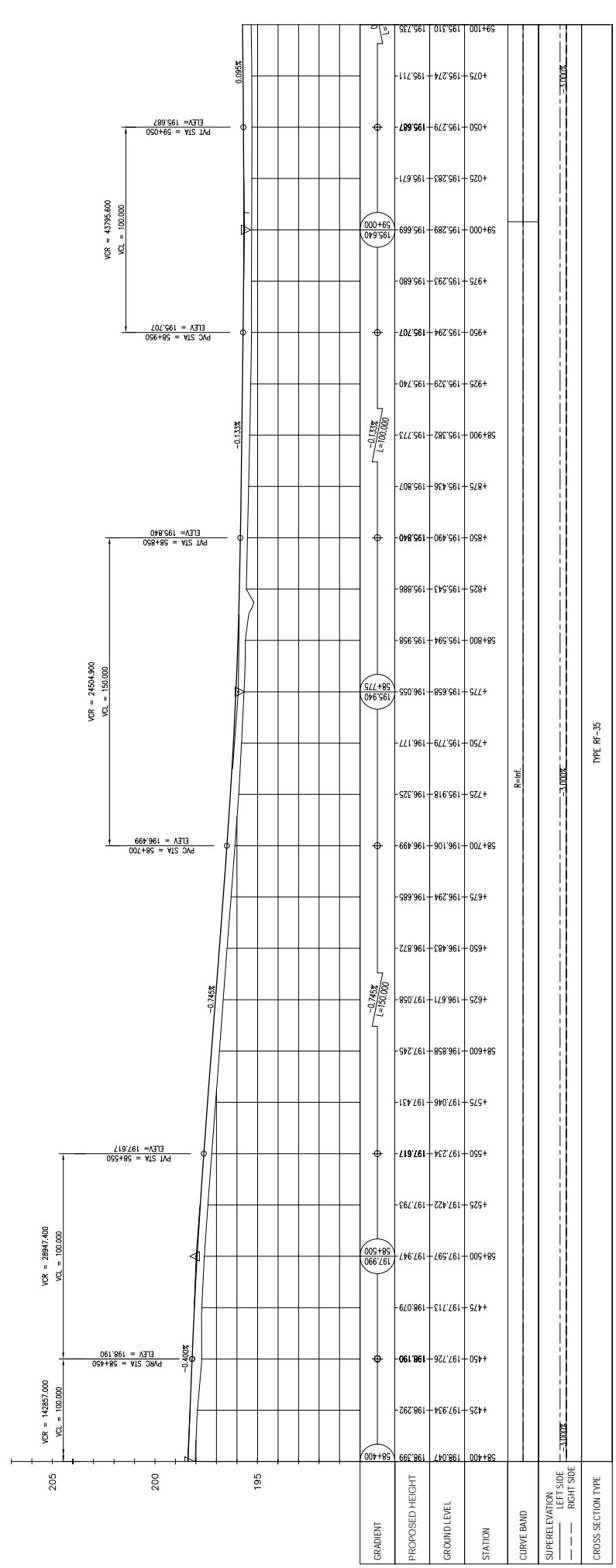
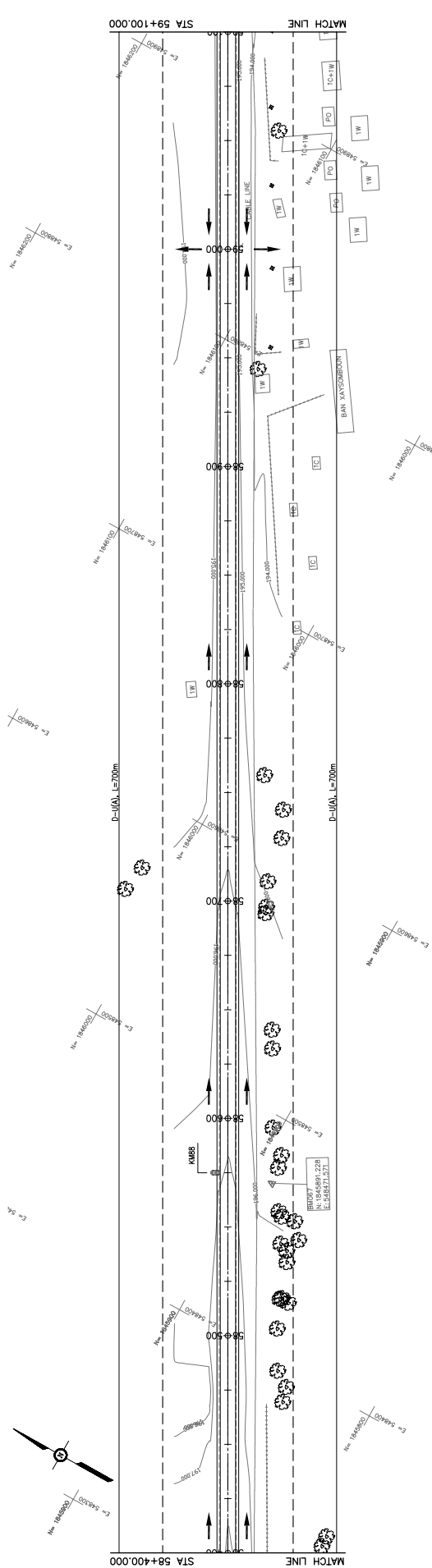
TITLE:	
PREPARED BY:	
CHECKED BY:	
APPROVED BY:	

NAME:	
SIGNATURE:	

NO.	
DATE	

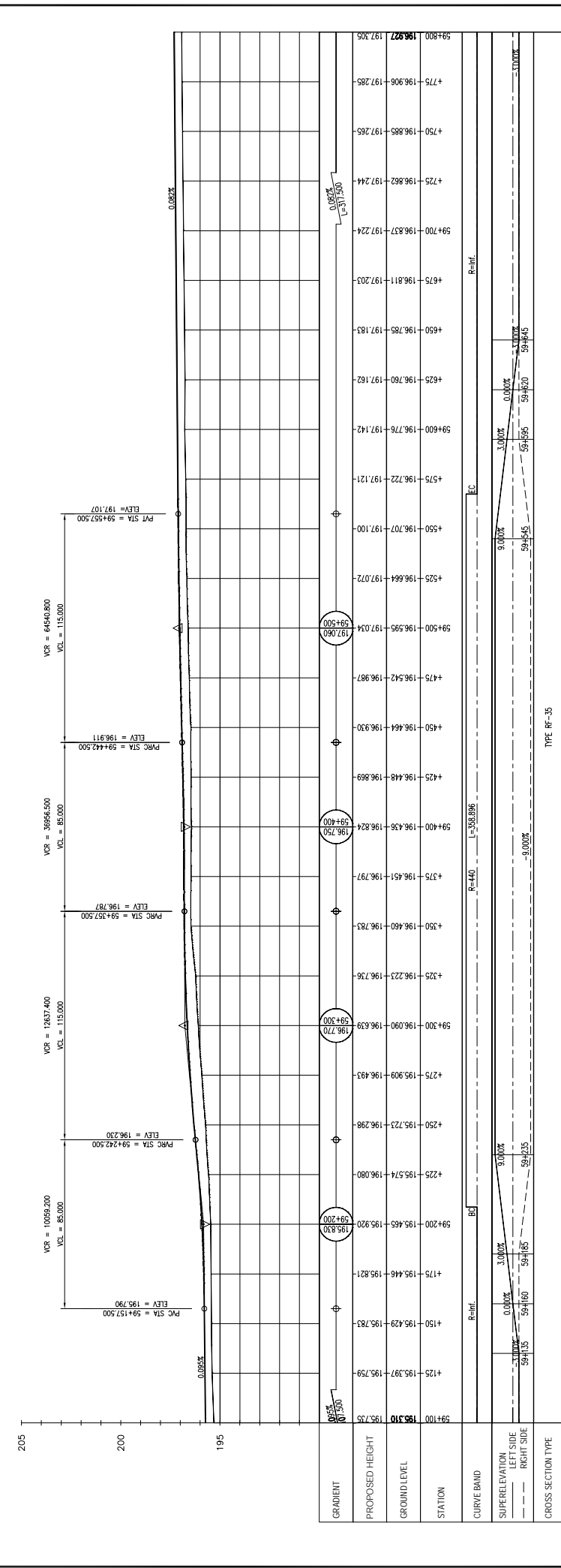
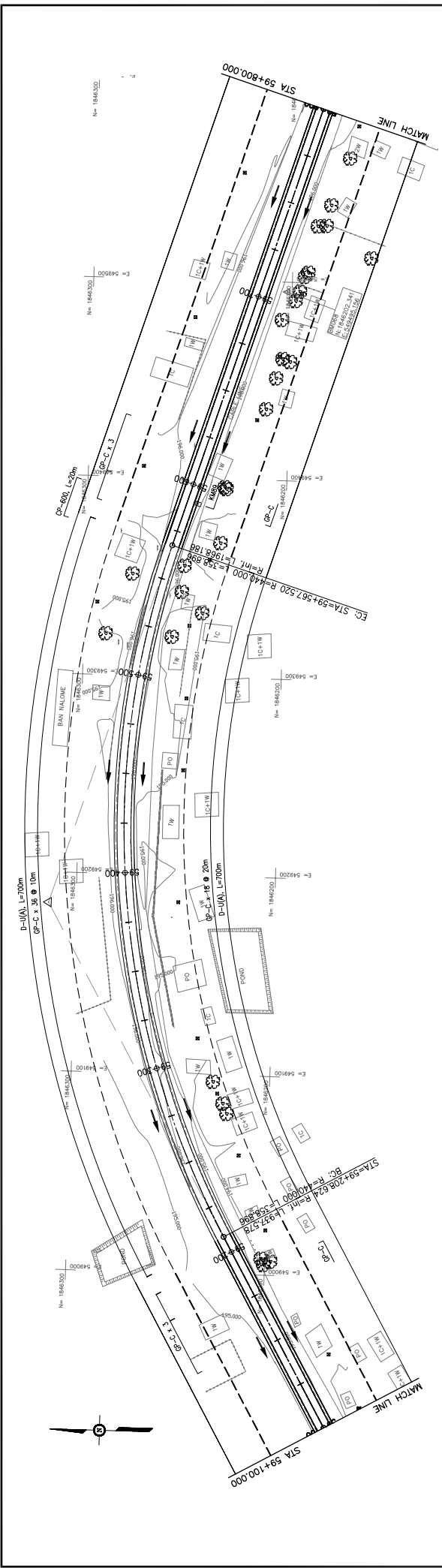
NO.	
DATE	





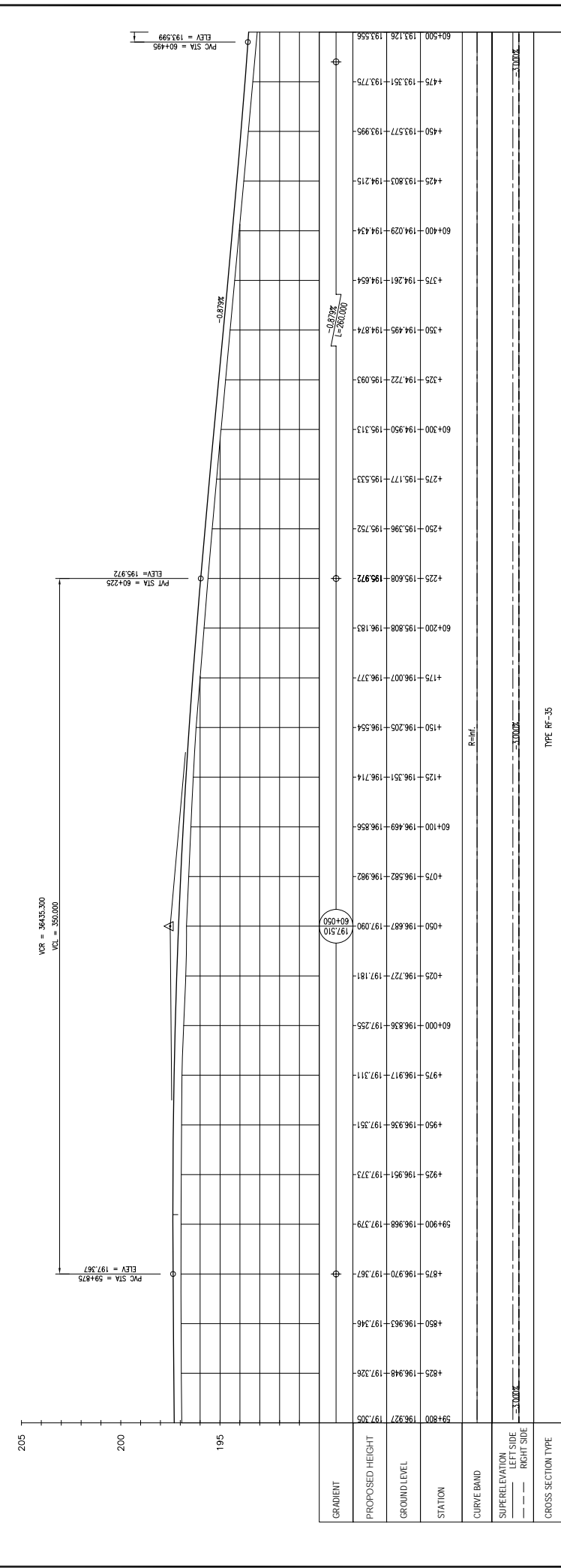
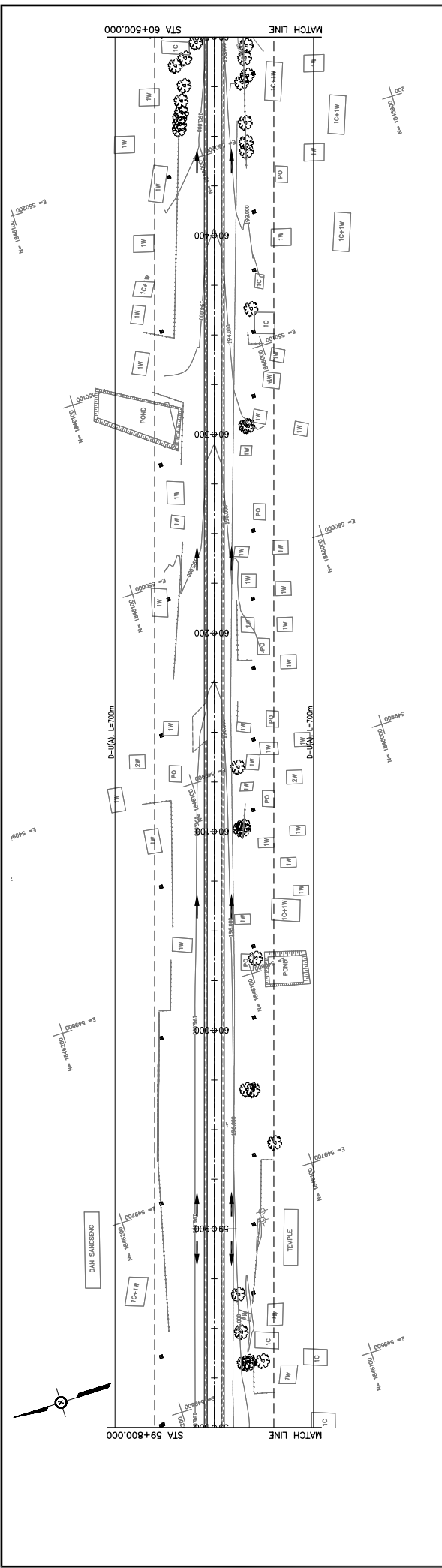
TYPE: RF-35

		JAPAN INTERNATIONAL COOPERATION AGENCY THE CONSORTIUM OF ORIENTAL CONSULTANTS CO., LTD. INTERNATIONAL DEVELOPMENT CENTER OF JAPAN		MINISTRY OF PUBLIC WORKS AND TRANSPORT LAO PEOPLE'S DEMOCRATIC REPUBLIC		THE PROJECT FOR IMPROVEMENT OF NATIONAL ROAD No.9 AS EAST-WEST ECONOMIC CORRIDOR IN LAO PDR		SCALE: H=1:2,000 V=1:200
TITLE	NAME	SIGNATURE	DATE	DESCRIPTION	REV. No.	DATE	DESCRIPTION	DRAWING No.
PREPARED BY								
CHECKED BY								
APPROVED BY								
PLAN & PROFILE SECTION 1: STA 58+400 - 59+100								C-144



TYPE: RP-35

	JAPAN INTERNATIONAL COOPERATION AGENCY THE CONSORTIUM OF ORIENTAL CONSULTANTS CO., LTD. INTERNATIONAL DEVELOPMENT CENTER OF JAPAN	MINISTRY OF PUBLIC WORKS AND TRANSPORT LAO PEOPLE'S DEMOCRATIC REPUBLIC	THE PROJECT FOR IMPROVEMENT OF NATIONAL ROAD No.9 AS EAST-WEST ECONOMIC CORRIDOR IN LAO PDR	REV. No. DATE DESCRIPTION	SCALE: H=1:2,000 V=1:200
	TITLE PREPARED BY CHECKED BY APPROVED BY	NAME SIGNATURE	DRAWING TITLE SECTION 1: STA 59+100 - 59+800 PLAN & PROFILE	DRAWING No. C-145	



STATION	ELEVATION	PROPOSED HEIGHT	GROUND LEVEL	GRADIENT
59+800	196.927	197.305	197.305	
4825	196.948	197.326	197.346	
4850	196.963	197.346	197.346	
4875	196.970	197.367	197.367	
59+900	196.968	197.379	197.379	
4925	196.951	197.373	197.373	
4950	196.936	197.351	197.351	
4975	196.917	197.311	197.311	
60+000	196.836	197.285	197.285	
4025	196.727	197.181	197.181	
4050	196.687	197.090	197.090	
4075	196.582	196.982	196.982	
60+100	196.469	196.856	196.856	
4125	196.351	196.714	196.714	
4150	196.205	196.554	196.554	
4175	196.007	196.377	196.377	
60+200	195.808	196.183	196.183	
4225	195.608	195.972	195.972	
4250	195.396	195.752	195.752	
4275	195.177	195.533	195.533	
60+300	194.950	195.313	195.313	
4325	194.722	195.093	195.093	
4350	194.493	194.874	194.874	
4375	194.261	194.654	194.654	
60+400	194.029	194.434	194.434	
4425	193.803	194.215	194.215	
4450	193.577	193.995	193.995	
4475	193.351	193.775	193.775	
60+500	193.126	193.556	193.556	

**THE PROJECT FOR IMPROVEMENT OF NATIONAL ROAD No.9
AS EAST-WEST ECONOMIC CORRIDOR IN LAO PDR**

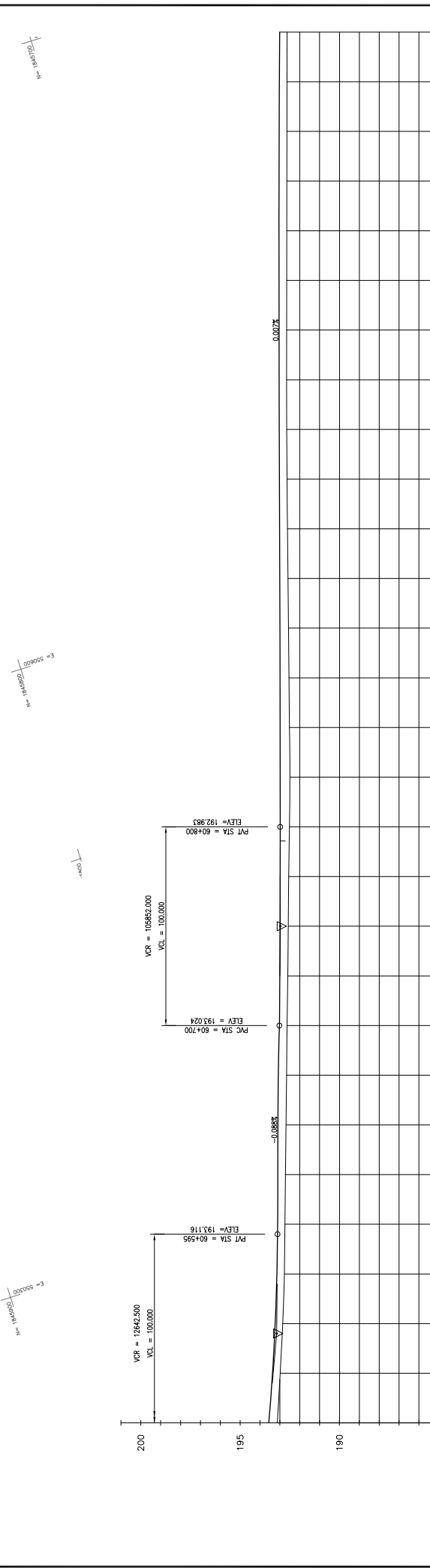
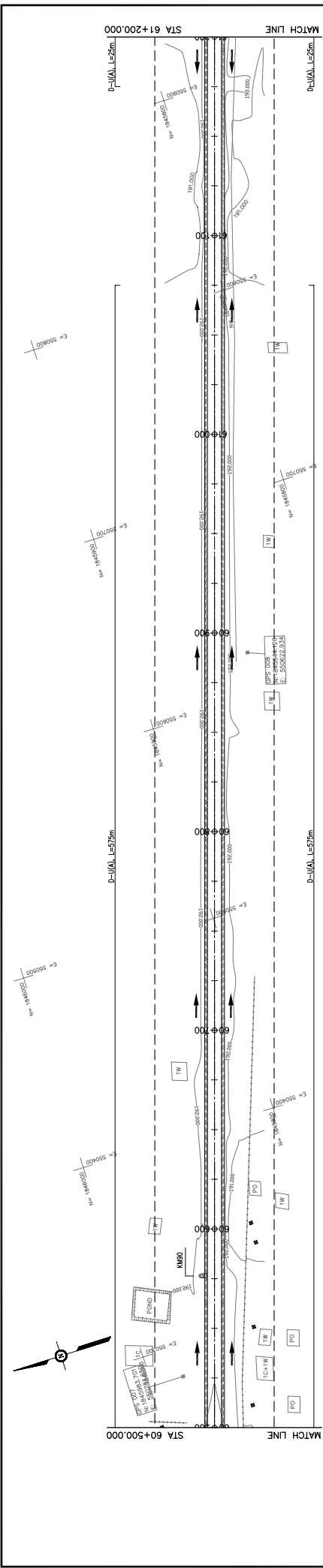
**MINISTRY OF PUBLIC WORKS AND TRANSPORT
LAO PEOPLE'S DEMOCRATIC REPUBLIC**

**PLAN & PROFILE
SECTION 1: STA 59+800 - 60+500**

DRAWING TITLE

SCALE: H=1:2,000 V=1:200	DESCRIPTION	DATE	REV. No.
DRAWING No. C-146			

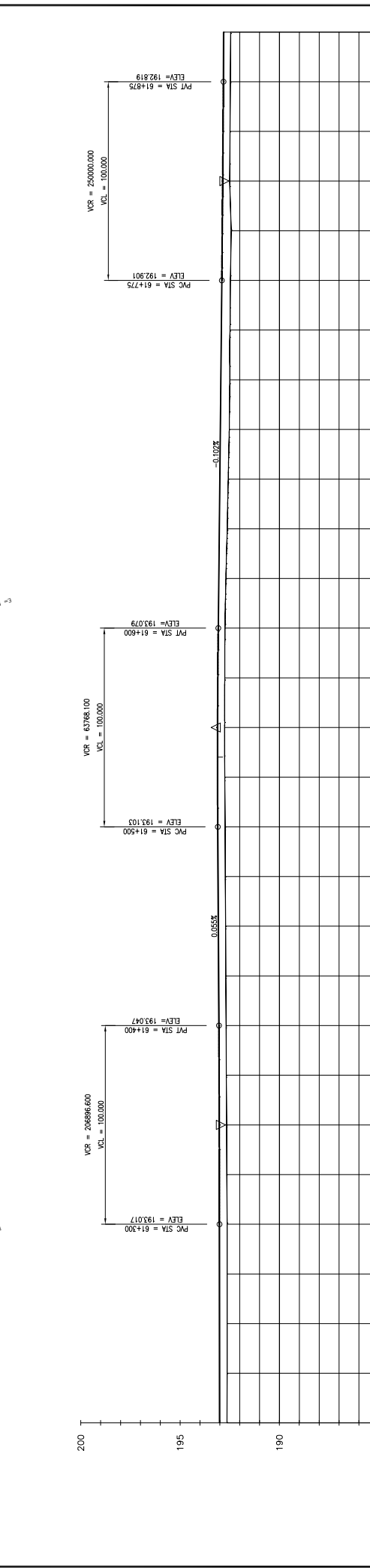
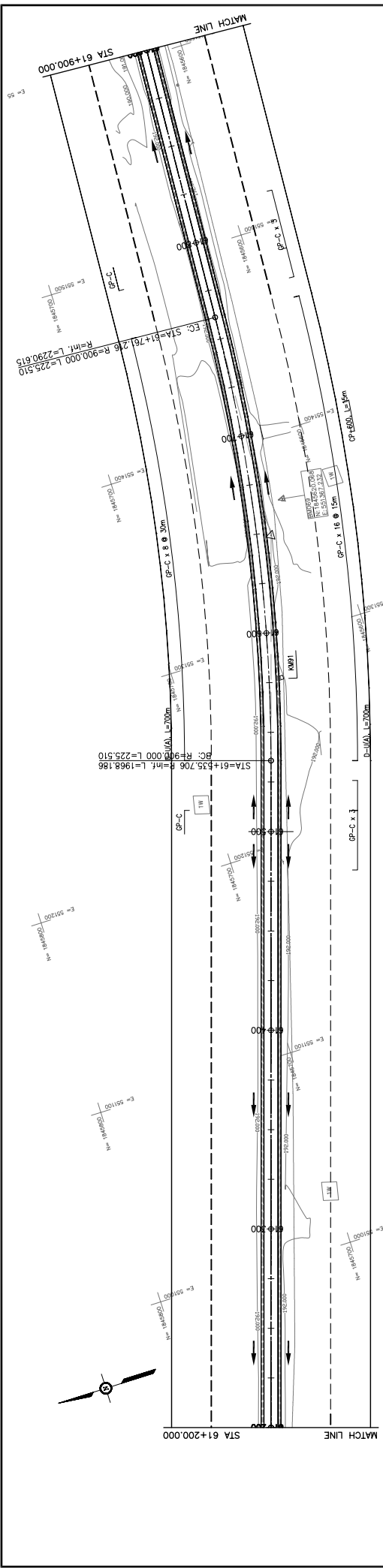
TITLE	SIGNATURE
PREPARED BY	
CHECKED BY	
APPROVED BY	



STATION	GROUND LEVEL	PROPOSED HEIGHT	GRADIENT
60+500	193.126	193.556	
4+25	192.982	193.371	
4+50	192.854	193.236	
4+75	192.775	193.149	
60+600	192.747	193.112	
4+25	192.718	193.090	
4+50	192.691	193.068	
4+75	192.663	193.046	
60+700	192.634	193.024	
4+25	192.607	193.005	
4+75	192.579	192.992	
60+800	192.523	192.983	
4+25	192.495	192.985	
4+50	192.519	192.987	
4+75	192.543	192.988	
60+900	192.566	192.990	
4+25	192.591	192.992	
4+50	192.615	192.993	
4+75	192.639	192.995	
61+000	192.663	192.997	
4+25	192.664	192.998	
4+50	192.660	193.000	
4+75	192.656	193.002	
61+100	192.652	193.003	
4+25	192.648	193.005	
4+50	192.644	193.007	
4+75	192.640	193.008	
61+200	192.637	193.010	

TYPE: RF-35

		JAPAN INTERNATIONAL COOPERATION AGENCY THE CONSORTIUM OF ORIENTAL CONSULTANTS CO., LTD. INTERNATIONAL DEVELOPMENT CENTER OF JAPAN		MINISTRY OF PUBLIC WORKS AND TRANSPORT LAO PEOPLE'S DEMOCRATIC REPUBLIC		THE PROJECT FOR IMPROVEMENT OF NATIONAL ROAD No.9 AS EAST-WEST ECONOMIC CORRIDOR IN LAO PDR		REV. No. DATE	DESCRIPTION DATE	SCALE: H=1:2,000 V=1:200 DRAWING No. C-147
DRAWING TITLE PLAN & PROFILE SECTION 1: STA 60+500 - 61+200				SIGNATURE NAME		TITLE PREPARED BY CHECKED BY APPROVED BY		DATE DESCRIPTION		DRAWING No. C-147



GRADIENT	PROPOSED HEIGHT	GROUND LEVEL	STATION	CURVE BAND	SUPERELEVATION LEFT SIDE RIGHT SIDE	CROSS SECTION TYPE
	192.637	193.010	61+200		0.000% / 0.000%	TYPE RF-35
	192.633	193.013	4+25		0.000% / 0.000%	
	192.629	193.013	4+50		0.000% / 0.000%	
	192.625	193.013	4+75		0.000% / 0.000%	
	192.632	193.017	61+300		0.000% / 0.000%	
	192.645	193.020	4+25		0.000% / 0.000%	
	192.656	193.026	4+50		0.000% / 0.000%	
	192.670	193.035	4+75		0.000% / 0.000%	
	192.734	193.103	61+500		0.000% / 0.000%	
	192.747	193.111	4+25		0.000% / 0.000%	
	192.756	193.110	4+50		0.000% / 0.000%	
	192.751	193.100	4+75		0.000% / 0.000%	
	192.736	193.079	61+600		0.000% / 0.000%	
	192.622	193.028	4+50		0.000% / 0.000%	
	192.627	193.028	4+75		0.000% / 0.000%	
	192.494	192.952	4+25		0.000% / 0.000%	
	192.498	192.926	4+50		0.000% / 0.000%	
	192.465	192.901	4+75		0.000% / 0.000%	
	192.428	192.877	61+800		0.000% / 0.000%	
	192.498	192.855	4+25		0.000% / 0.000%	
	192.483	192.836	4+50		0.000% / 0.000%	
	192.468	192.819	4+75		0.000% / 0.000%	
	192.450	192.804	61+900		0.000% / 0.000%	

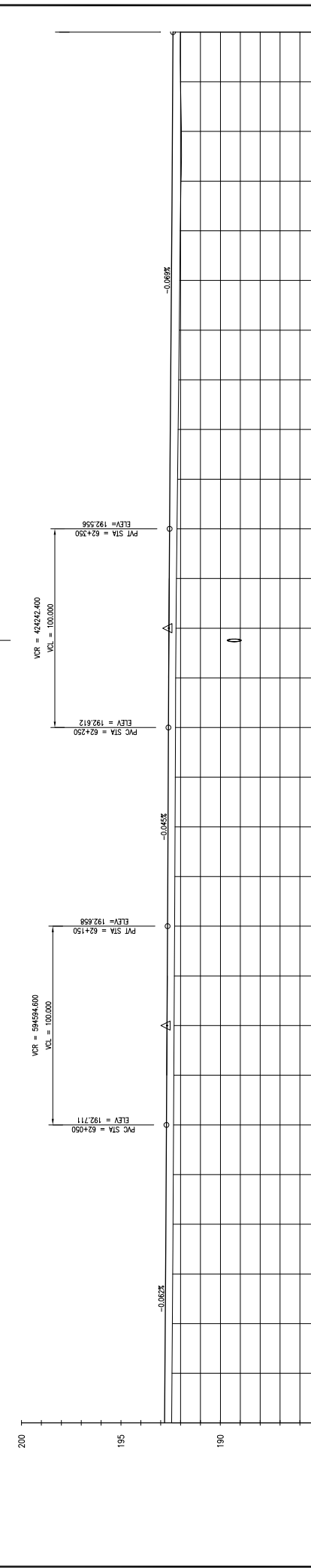
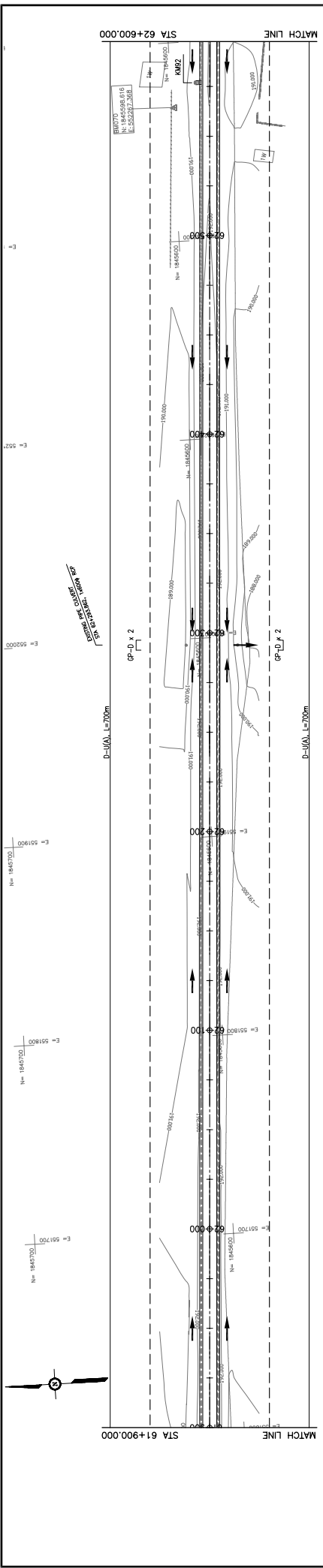
JAPAN INTERNATIONAL COOPERATION AGENCY
 THE CONSORTIUM OF
ORIENTAL CONSULTANTS CO., LTD.
 INTERNATIONAL DEVELOPMENT CENTER OF JAPAN

MINISTRY OF PUBLIC WORKS AND TRANSPORT
LAO PEOPLE'S DEMOCRATIC REPUBLIC

THE PROJECT FOR IMPROVEMENT OF NATIONAL ROAD No.9
AS EAST-WEST ECONOMIC CORRIDOR IN LAO PDR

PLAN & PROFILE
SECTION 1: STA 61+200 - 61+900

REV. No.	DATE	DESCRIPTION	SCALE:
1			H=1:2,000
2			V=1:200
3			DRAWING No.
4			C-148



STATION	PROPOSED HEIGHT	GROUND LEVEL	GRADIENT
61+900	192.450	192.804	
62+000	192.382	192.742	
62+100	192.324	192.682	
62+200	192.262	192.635	
62+300	192.200	192.587	
62+400	192.138	192.539	
62+500	192.076	192.491	
62+600	192.014	192.443	

CROSS SECTION TYPE: TYPE RF-35

SUPERELEVATION: LEFT SIDE, RIGHT SIDE

CURVE BAND: R=inf.

JAPAN INTERNATIONAL COOPERATION AGENCY
 THE CONSORTIUM OF
ORIENTAL CONSULTANTS CO., LTD.
INTERNATIONAL DEVELOPMENT CENTER OF JAPAN

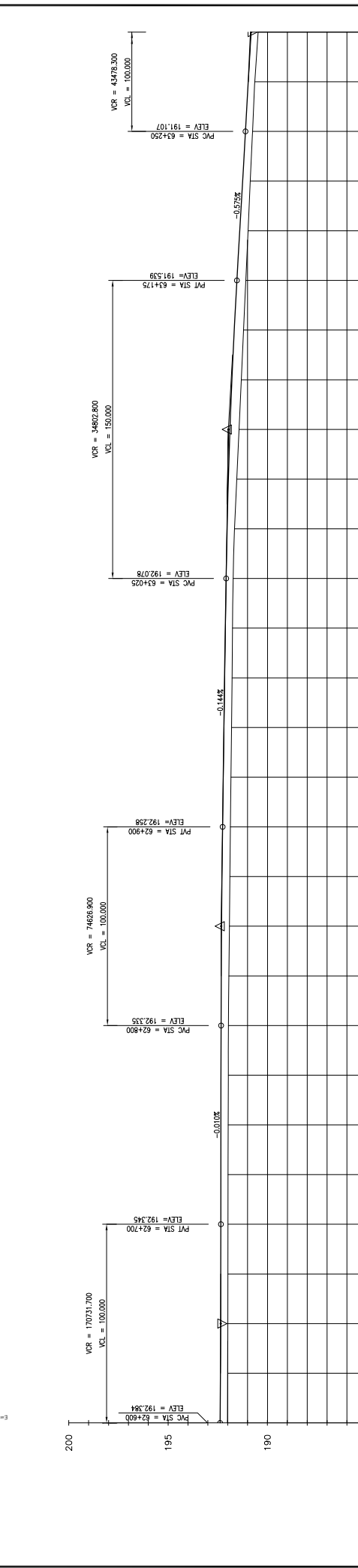
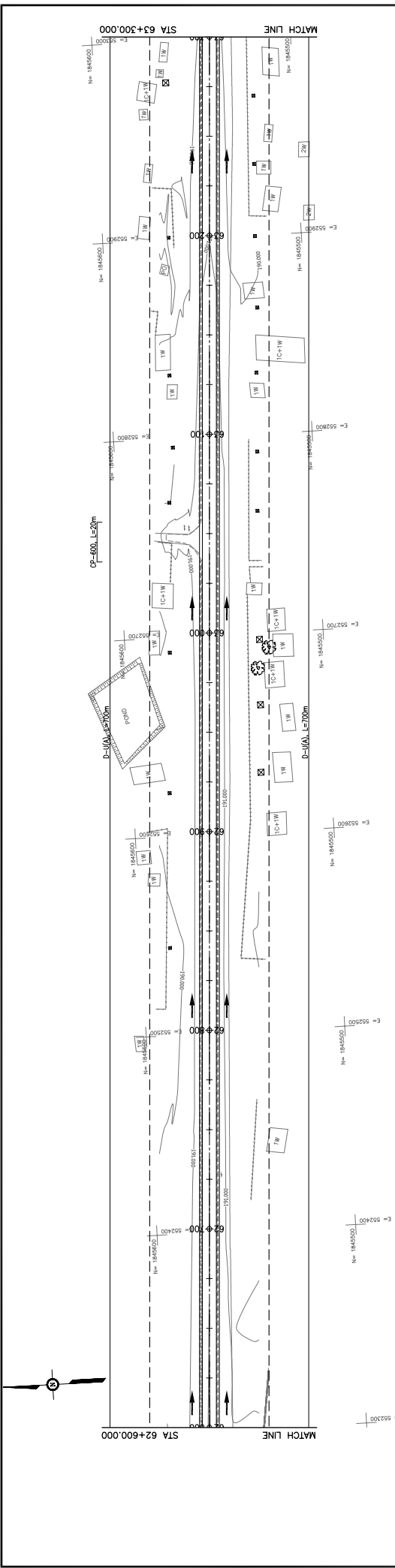
MINISTRY OF PUBLIC WORKS AND TRANSPORT
LAO PEOPLE'S DEMOCRATIC REPUBLIC

THE PROJECT FOR IMPROVEMENT OF NATIONAL ROAD No.9
AS EAST-WEST ECONOMIC CORRIDOR IN LAO PDR

PLAN & PROFILE
SECTION 1: STA 61+900 - 62+600

REV. No.	DATE	DESCRIPTION

SCALE: H=1:2,000
 V=1:200
 DRAWING No.: C-149



GRADIENT	PROPOSED HEIGHT	GROUND LEVEL	STATION
0.00%	192.354	192.354	62+600
0.00%	192.357	192.357	62+650
0.00%	192.340	192.340	62+700
0.00%	192.343	192.343	62+725
0.00%	192.345	192.345	62+750
0.00%	192.338	192.338	62+775
0.00%	192.335	192.335	62+800
0.00%	192.328	192.328	62+825
0.00%	192.313	192.313	62+850
0.00%	192.290	192.290	62+875
0.00%	192.258	192.258	62+900
0.00%	192.222	192.222	62+925
0.00%	192.186	192.186	62+950
0.00%	192.150	192.150	62+975
0.00%	192.114	192.114	63+000
0.00%	192.078	192.078	63+025
0.00%	192.033	192.033	63+050
0.00%	191.970	191.970	63+075
0.00%	191.888	191.888	63+100
0.00%	191.790	191.790	63+125
0.00%	191.674	191.674	63+150
0.00%	191.539	191.539	63+175
0.00%	191.395	191.395	63+200
0.00%	191.251	191.251	63+225
0.00%	191.107	191.107	63+250
0.00%	190.971	190.971	63+275
0.00%	190.820	190.820	63+300

TYPE: RF-35

CROSS SECTION TYPE		TYPE: RF-35																																																																																																																	
SUPERELEVATION LEFT SIDE		R=inf.																																																																																																																	
SUPERELEVATION RIGHT SIDE		R=inf.																																																																																																																	
<table border="1" style="width: 100%; border-collapse: collapse;"> <thead> <tr> <th>STATION</th> <th>PROPOSED HEIGHT</th> <th>GROUND LEVEL</th> <th>STATION</th> </tr> </thead> <tbody> <tr><td>62+600</td><td>192.354</td><td>192.354</td><td>62+600</td></tr> <tr><td>62+650</td><td>192.357</td><td>192.357</td><td>62+650</td></tr> <tr><td>62+700</td><td>192.340</td><td>192.340</td><td>62+700</td></tr> <tr><td>62+725</td><td>192.343</td><td>192.343</td><td>62+725</td></tr> <tr><td>62+750</td><td>192.345</td><td>192.345</td><td>62+750</td></tr> <tr><td>62+775</td><td>192.338</td><td>192.338</td><td>62+775</td></tr> <tr><td>62+800</td><td>192.335</td><td>192.335</td><td>62+800</td></tr> <tr><td>62+825</td><td>192.328</td><td>192.328</td><td>62+825</td></tr> <tr><td>62+850</td><td>192.313</td><td>192.313</td><td>62+850</td></tr> <tr><td>62+875</td><td>192.290</td><td>192.290</td><td>62+875</td></tr> <tr><td>62+900</td><td>192.258</td><td>192.258</td><td>62+900</td></tr> <tr><td>62+925</td><td>192.222</td><td>192.222</td><td>62+925</td></tr> <tr><td>62+950</td><td>192.186</td><td>192.186</td><td>62+950</td></tr> <tr><td>62+975</td><td>192.150</td><td>192.150</td><td>62+975</td></tr> <tr><td>63+000</td><td>192.114</td><td>192.114</td><td>63+000</td></tr> <tr><td>63+025</td><td>192.078</td><td>192.078</td><td>63+025</td></tr> <tr><td>63+050</td><td>192.033</td><td>192.033</td><td>63+050</td></tr> <tr><td>63+075</td><td>191.970</td><td>191.970</td><td>63+075</td></tr> <tr><td>63+100</td><td>191.888</td><td>191.888</td><td>63+100</td></tr> <tr><td>63+125</td><td>191.790</td><td>191.790</td><td>63+125</td></tr> <tr><td>63+150</td><td>191.674</td><td>191.674</td><td>63+150</td></tr> <tr><td>63+175</td><td>191.539</td><td>191.539</td><td>63+175</td></tr> <tr><td>63+200</td><td>191.395</td><td>191.395</td><td>63+200</td></tr> <tr><td>63+225</td><td>191.251</td><td>191.251</td><td>63+225</td></tr> <tr><td>63+250</td><td>191.107</td><td>191.107</td><td>63+250</td></tr> <tr><td>63+275</td><td>190.971</td><td>190.971</td><td>63+275</td></tr> <tr><td>63+300</td><td>190.820</td><td>190.820</td><td>63+300</td></tr> </tbody> </table>				STATION	PROPOSED HEIGHT	GROUND LEVEL	STATION	62+600	192.354	192.354	62+600	62+650	192.357	192.357	62+650	62+700	192.340	192.340	62+700	62+725	192.343	192.343	62+725	62+750	192.345	192.345	62+750	62+775	192.338	192.338	62+775	62+800	192.335	192.335	62+800	62+825	192.328	192.328	62+825	62+850	192.313	192.313	62+850	62+875	192.290	192.290	62+875	62+900	192.258	192.258	62+900	62+925	192.222	192.222	62+925	62+950	192.186	192.186	62+950	62+975	192.150	192.150	62+975	63+000	192.114	192.114	63+000	63+025	192.078	192.078	63+025	63+050	192.033	192.033	63+050	63+075	191.970	191.970	63+075	63+100	191.888	191.888	63+100	63+125	191.790	191.790	63+125	63+150	191.674	191.674	63+150	63+175	191.539	191.539	63+175	63+200	191.395	191.395	63+200	63+225	191.251	191.251	63+225	63+250	191.107	191.107	63+250	63+275	190.971	190.971	63+275	63+300	190.820	190.820	63+300
STATION	PROPOSED HEIGHT	GROUND LEVEL	STATION																																																																																																																
62+600	192.354	192.354	62+600																																																																																																																
62+650	192.357	192.357	62+650																																																																																																																
62+700	192.340	192.340	62+700																																																																																																																
62+725	192.343	192.343	62+725																																																																																																																
62+750	192.345	192.345	62+750																																																																																																																
62+775	192.338	192.338	62+775																																																																																																																
62+800	192.335	192.335	62+800																																																																																																																
62+825	192.328	192.328	62+825																																																																																																																
62+850	192.313	192.313	62+850																																																																																																																
62+875	192.290	192.290	62+875																																																																																																																
62+900	192.258	192.258	62+900																																																																																																																
62+925	192.222	192.222	62+925																																																																																																																
62+950	192.186	192.186	62+950																																																																																																																
62+975	192.150	192.150	62+975																																																																																																																
63+000	192.114	192.114	63+000																																																																																																																
63+025	192.078	192.078	63+025																																																																																																																
63+050	192.033	192.033	63+050																																																																																																																
63+075	191.970	191.970	63+075																																																																																																																
63+100	191.888	191.888	63+100																																																																																																																
63+125	191.790	191.790	63+125																																																																																																																
63+150	191.674	191.674	63+150																																																																																																																
63+175	191.539	191.539	63+175																																																																																																																
63+200	191.395	191.395	63+200																																																																																																																
63+225	191.251	191.251	63+225																																																																																																																
63+250	191.107	191.107	63+250																																																																																																																
63+275	190.971	190.971	63+275																																																																																																																
63+300	190.820	190.820	63+300																																																																																																																

JAPAN INTERNATIONAL COOPERATION AGENCY
THE CONSORTIUM OF
ORIENTAL CONSULTANTS CO., LTD.
INTERNATIONAL DEVELOPMENT CENTER OF JAPAN

MINISTRY OF PUBLIC WORKS AND TRANSPORT
LAO PEOPLE'S DEMOCRATIC REPUBLIC

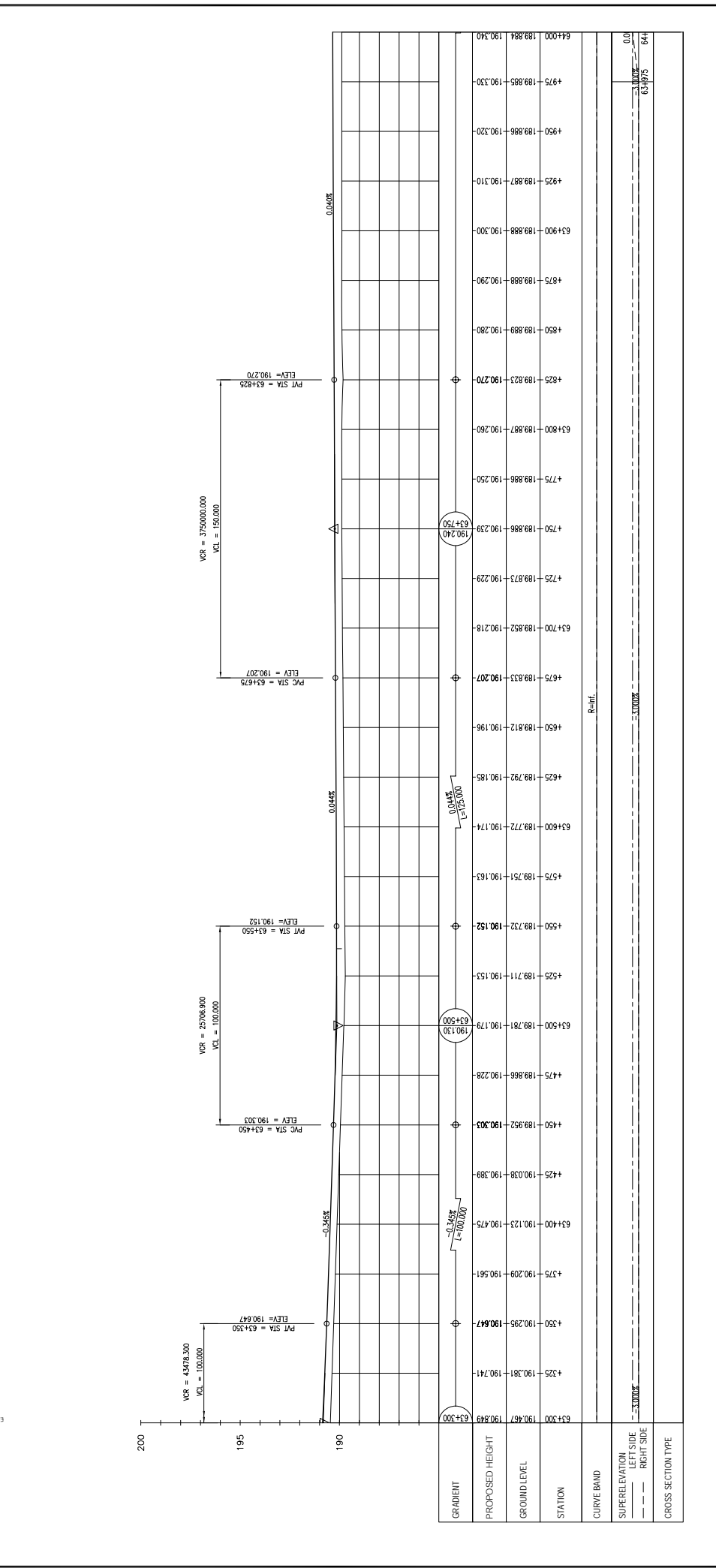
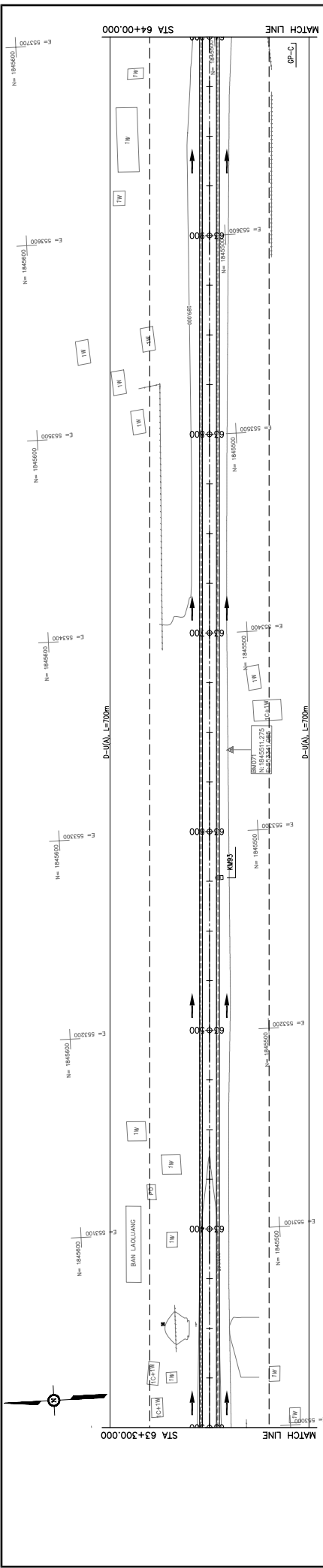
THE PROJECT FOR IMPROVEMENT OF NATIONAL ROAD No.9
AS EAST-WEST ECONOMIC CORRIDOR IN LAO PDR

PLAN & PROFILE
SECTION 1: STA 62+600 - 63+300

REV. No.	DATE	DESCRIPTION

SCALE: H=1:2,000
V=1:200

DRAWING No.: C-150



REV. No.	DATE	DESCRIPTION

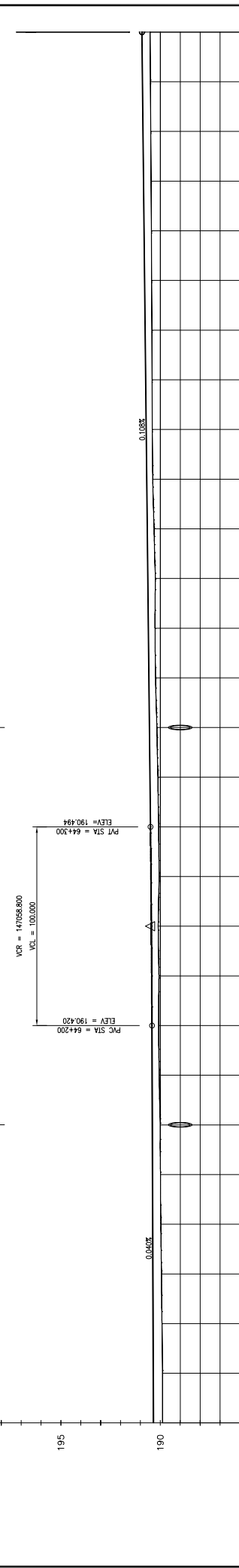
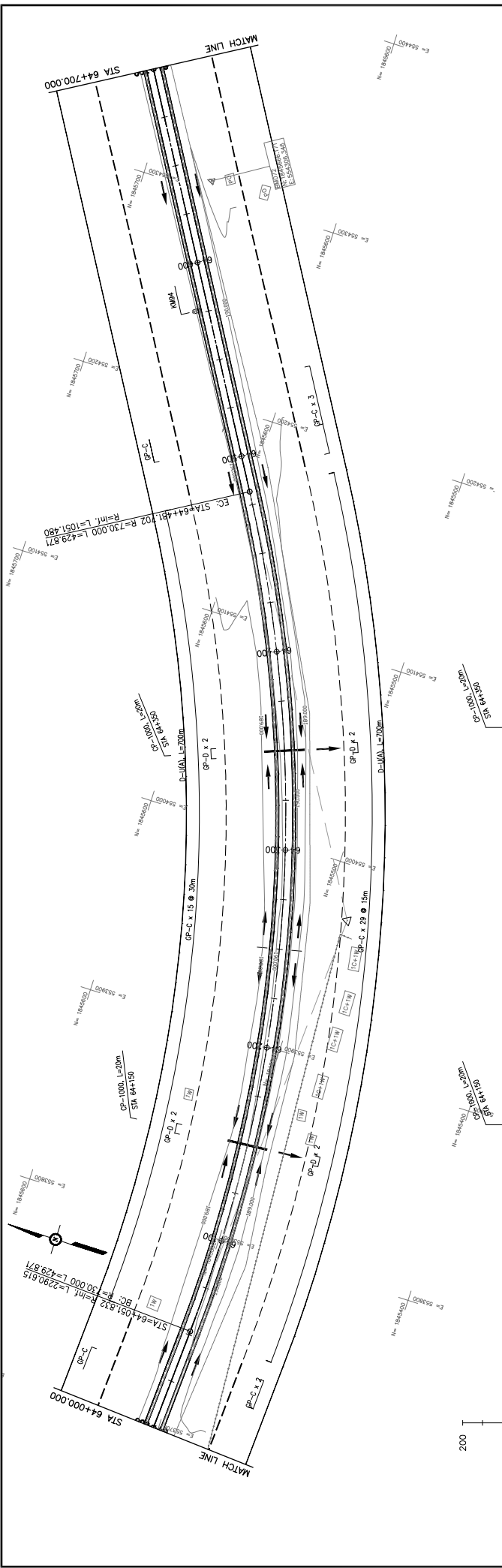
SCALE:	H=1:2,000
	V=1:200
DRAWING No.:	C-151

THE PROJECT FOR IMPROVEMENT OF NATIONAL ROAD No.9 AS EAST-WEST ECONOMIC CORRIDOR IN LAO PDR	
DRAWING TITLE	
PLAN & PROFILE	
SECTION 1: STA 63+300 - 64+000	

JAPAN INTERNATIONAL COOPERATION AGENCY THE CONSORTIUM OF ORIENTAL CONSULTANTS CO., LTD. INTERNATIONAL DEVELOPMENT CENTER OF JAPAN	
TITLE	SIGNATURE
PREPARED BY	
CHECKED BY	
APPROVED BY	

STATION	PROPOSED HEIGHT	GROUND LEVEL
63+300	190.67	190.67
4+25	190.381	190.741
4+50	190.295	190.647
4+75	190.209	190.561
63+400	190.123	190.475
4+25	190.038	190.389
4+50	189.952	190.303
4+75	189.866	190.228
63+500	189.781	190.179
4+25	189.711	190.153
4+50	189.732	190.152
4+75	189.751	190.163
63+600	189.772	190.174
6+25	189.792	190.185
4+50	189.812	190.196
4+75	189.833	190.207
63+700	189.852	190.218
4+25	189.873	190.229
4+50	189.886	190.239
4+75	189.886	190.250
63+800	189.887	190.260
4+25	189.823	190.270
4+50	189.889	190.280
4+75	189.888	190.290
63+900	189.888	190.300
4+25	189.887	190.310
4+50	189.886	190.320
4+75	189.885	190.330
64+000	189.884	190.340

CURVE BAND	R=inf.
SUPERELEVATION LEFT SIDE	0.000%
RIGHT SIDE	0.000%
CROSS SECTION TYPE	



STATION	GROUND LEVEL	PROPOSED HEIGHT	GRADIENT
64+000	189.884	190.540	0.040%
64+025	189.883	190.550	0.040%
64+050	189.914	190.560	0.040%
64+075	189.934	190.570	0.040%
64+100	189.970	190.580	0.040%
64+125	189.990	190.590	0.040%
64+150	189.997	190.400	0.040%
64+175	190.054	190.410	0.040%
64+200	190.084	190.420	0.040%
64+225	190.067	190.430	0.040%
64+250	190.104	190.448	0.040%
64+275	190.054	190.469	0.040%
64+300	190.081	190.494	0.040%
64+325	190.118	190.521	0.040%
64+350	190.169	190.548	0.040%
64+375	190.237	190.575	0.040%
64+400	190.263	190.602	0.040%
64+425	190.245	190.629	0.040%
64+450	190.311	190.656	0.040%
64+475	190.379	190.683	0.040%
64+500	190.401	190.710	0.040%
64+525	190.413	190.737	0.040%
64+550	190.424	190.764	0.040%
64+575	190.435	190.791	0.040%
64+600	190.446	190.818	0.040%
64+625	190.459	190.845	0.040%
64+650	190.477	190.872	0.040%
64+675	190.496	190.899	0.040%
64+700	190.515	190.926	0.040%

JAPAN INTERNATIONAL COOPERATION AGENCY
 THE CONSORTIUM OF
ORIENTAL CONSULTANTS CO., LTD.
 INTERNATIONAL DEVELOPMENT CENTER OF JAPAN

MINISTRY OF PUBLIC WORKS AND TRANSPORT
LAO PEOPLE'S DEMOCRATIC REPUBLIC

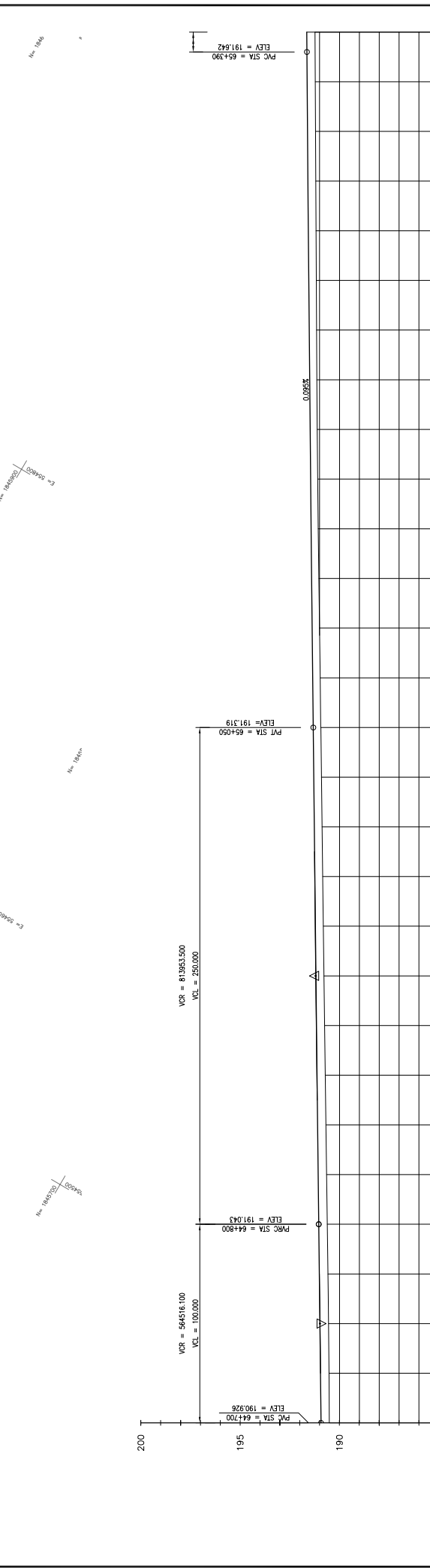
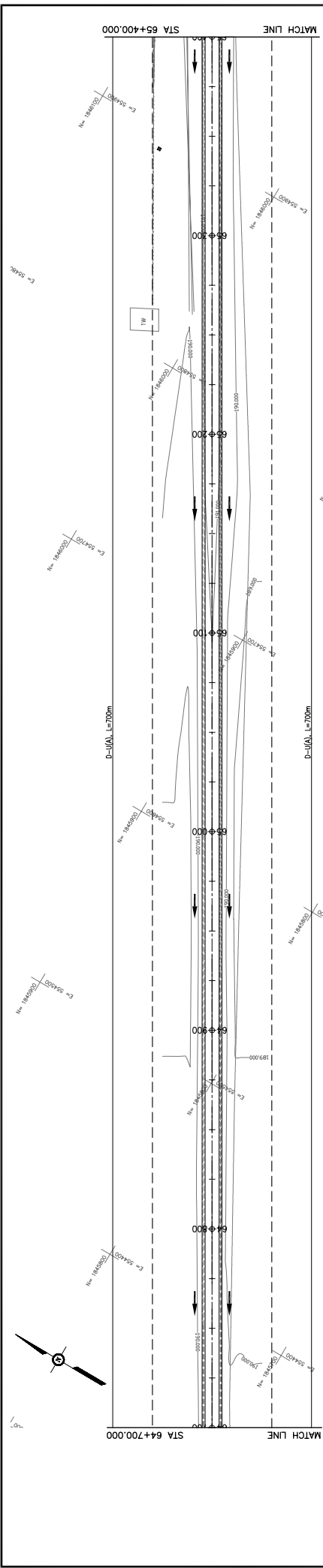
THE PROJECT FOR IMPROVEMENT OF NATIONAL ROAD No.9
AS EAST-WEST ECONOMIC CORRIDOR IN LAO PDR

PLAN & PROFILE
SECTION 1: STA 64+000 - 64+700

DRAWING TITLE: _____
 DRAWING NO.: _____

REV. No.	DATE	DESCRIPTION
1		
2		
3		
4		
5		
6		
7		
8		
9		
10		

SCALE: H=1:2,000
 V=1:200
 DRAWING No.: _____
 C-152



STATION	PROPOSED HEIGHT	GROUND LEVEL	GRADIENT
64+700	190.515	190.928	
64+725	190.532	190.954	
64+750	190.550	190.982	
64+775	190.583	191.012	
64+800	190.615	191.043	
64+825	190.649	191.074	
64+850	190.682	191.104	
64+875	190.715	191.134	
64+900	190.748	191.162	
64+925	190.781	191.190	
64+950	190.813	191.218	
64+975	190.845	191.244	
65+000	190.877	191.270	
65+025	190.909	191.295	
65+050	190.941	191.319	
65+075	190.973	191.342	
65+100	191.005	191.366	
65+125	191.036	191.390	
65+150	191.068	191.414	
65+175	191.100	191.437	
65+200	191.124	191.461	
65+225	191.138	191.485	
65+250	191.153	191.509	
65+275	191.167	191.532	
65+300	191.180	191.556	
65+325	191.193	191.580	
65+350	191.206	191.604	
65+375	191.219	191.627	
65+400	191.233	191.649	

TYPE: RF-35

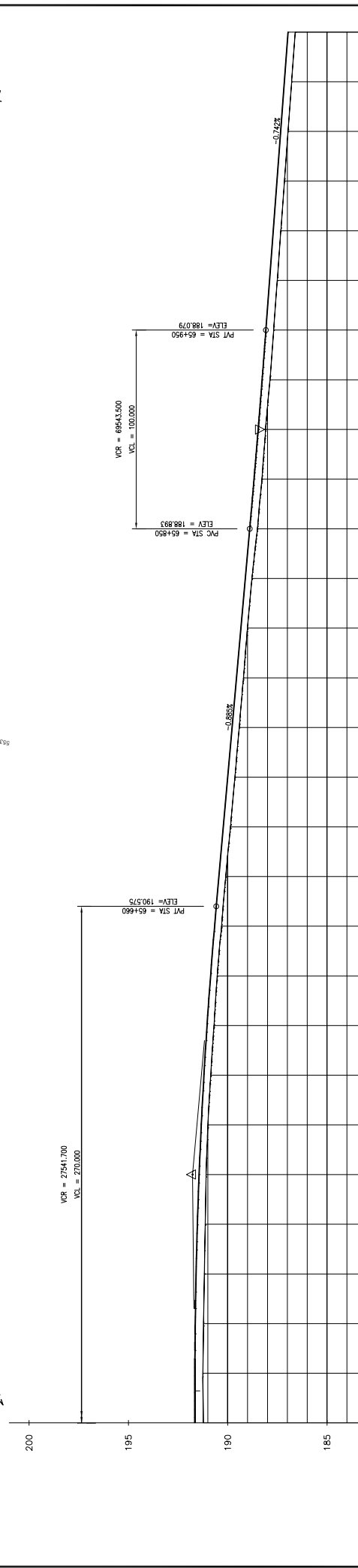
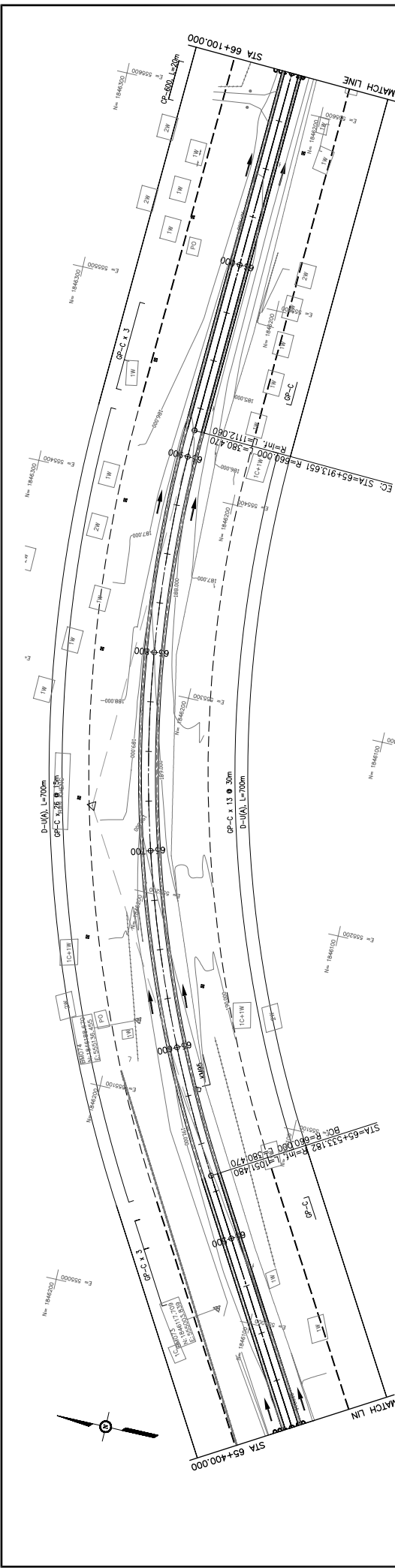
REVISIONS	DATE	DESCRIPTION	SCALE: H=1:2,000 V=1:200

MINISTRY OF PUBLIC WORKS AND TRANSPORT
LAO PEOPLE'S DEMOCRATIC REPUBLIC

JAPAN INTERNATIONAL COOPERATION AGENCY
THE CONSORTIUM OF
ORIENTAL CONSULTANTS CO., LTD.
INTERNATIONAL DEVELOPMENT CENTER OF JAPAN

PLAN & PROFILE
SECTION 1: STA 64+700 - 65+400

DRAWING NO.: **C-153**



GRADIENT	PROPOSED HEIGHT	GROUND LEVEL	STATION	CURVE BAND	SUPERELEVATION LEFT SIDE	SUPERELEVATION RIGHT SIDE	CROSS SECTION TYPE
0.000%	191.235	191.235	65+400	BC	0.000%	0.000%	BC
0.000%	191.439	191.439	65+500	BC	0.000%	0.000%	BC
0.000%	191.729	191.729	65+600	BC	0.000%	0.000%	BC
0.000%	191.997	191.997	65+700	BC	0.000%	0.000%	BC
0.000%	192.307	192.307	65+800	BC	0.000%	0.000%	BC
0.000%	192.657	192.657	65+900	BC	0.000%	0.000%	BC
0.000%	193.047	193.047	66+000	BC	0.000%	0.000%	BC
0.000%	193.477	193.477	66+100	BC	0.000%	0.000%	BC

JAPAN INTERNATIONAL COOPERATION AGENCY
 THE CONSORTIUM OF
ORIENTAL CONSULTANTS CO., LTD.
 INTERNATIONAL DEVELOPMENT CENTER OF JAPAN

MINISTRY OF PUBLIC WORKS AND TRANSPORT
 LAO PEOPLE'S DEMOCRATIC REPUBLIC

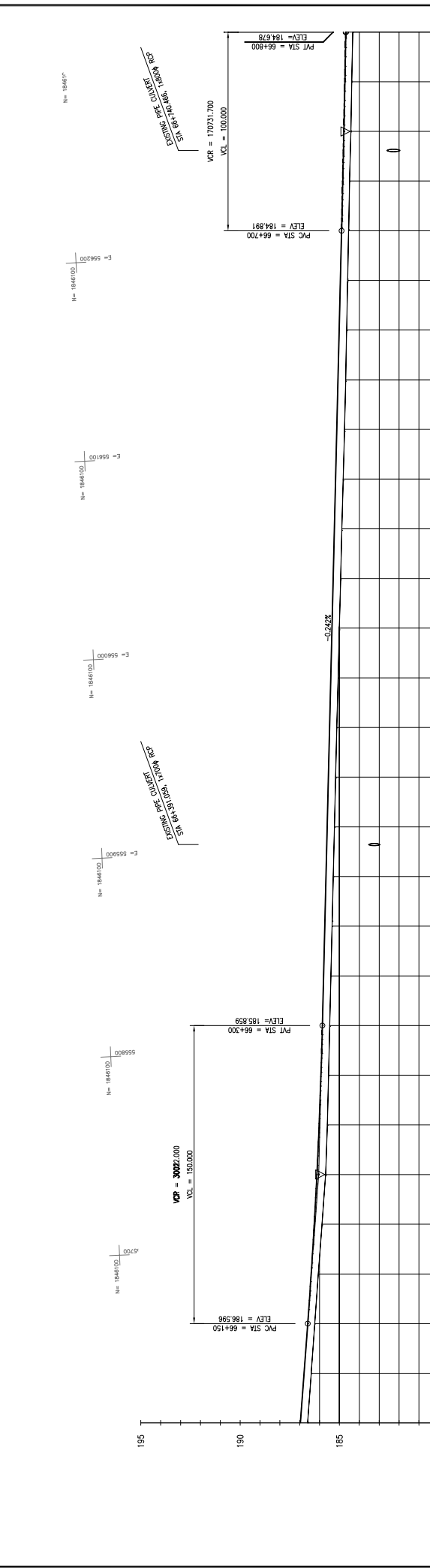
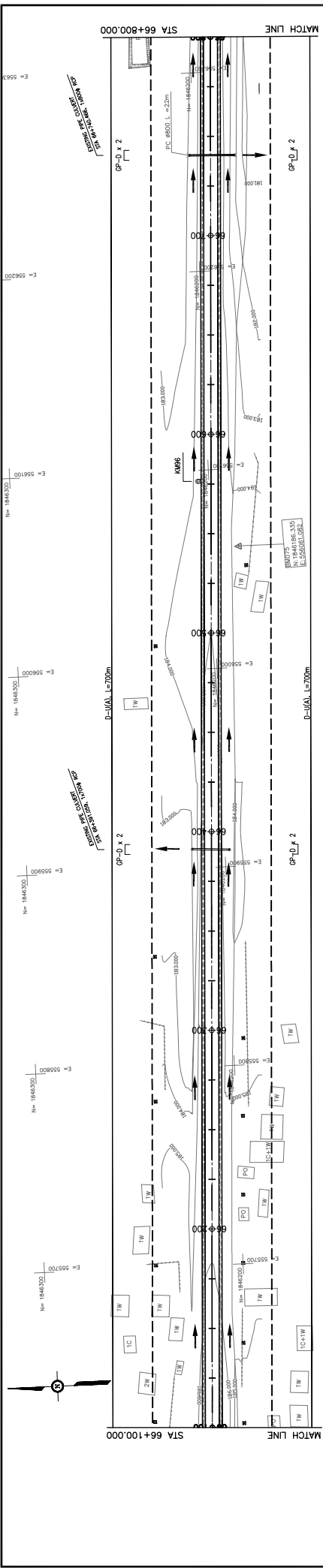
THE PROJECT FOR IMPROVEMENT OF NATIONAL ROAD No.9
 AS EAST-WEST ECONOMIC CORRIDOR IN LAO PDR

DRAWING TITLE: **PLAN & PROFILE**
 SECTION 1: STA 65+400 - 66+100

REV. No.	DATE	DESCRIPTION

SCALE: H=1:2,000
V=1:200

DRAWING No. **C-154**



STATION	ELEVATION	PROPOSED HEIGHT	GRADIENT
66+100	186.599	186.967	
+125	186.418	186.782	
+150	186.237	186.596	
+175	186.056	186.421	
+200	185.873	186.267	
+225	185.691	186.134	
+250	185.543	185.929	
+275	185.448	185.889	
+300	185.300	185.850	
+325	185.192	185.798	
+350	185.066	185.738	
+375	184.931	185.677	
+400	184.783	185.617	
+425	184.635	185.556	
+450	184.487	185.496	
+475	184.339	185.435	
+500	184.191	185.375	
+525	184.043	185.314	
+550	183.895	185.254	
+575	183.747	185.193	
+600	183.599	185.133	
+625	183.451	185.072	
+650	183.303	185.012	
+675	183.155	184.951	
+700	183.007	184.891	
+725	182.859	184.830	
+750	182.711	184.770	
+775	182.563	184.710	
+800	182.415	184.650	

JAPAN INTERNATIONAL COOPERATION AGENCY
 THE CONSORTIUM OF
ORIENTAL CONSULTANTS CO., LTD.
 INTERNATIONAL DEVELOPMENT CENTER OF JAPAN

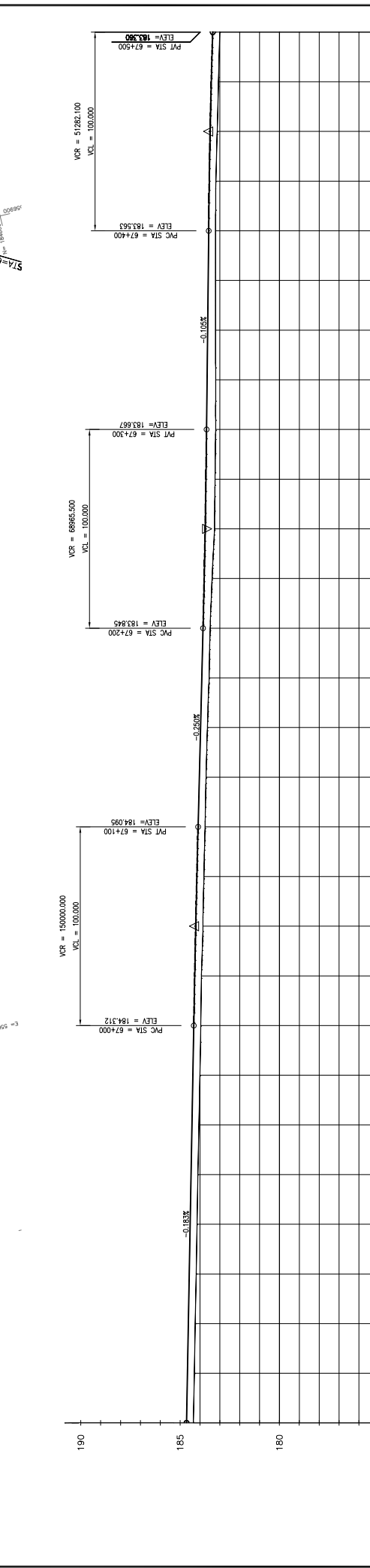
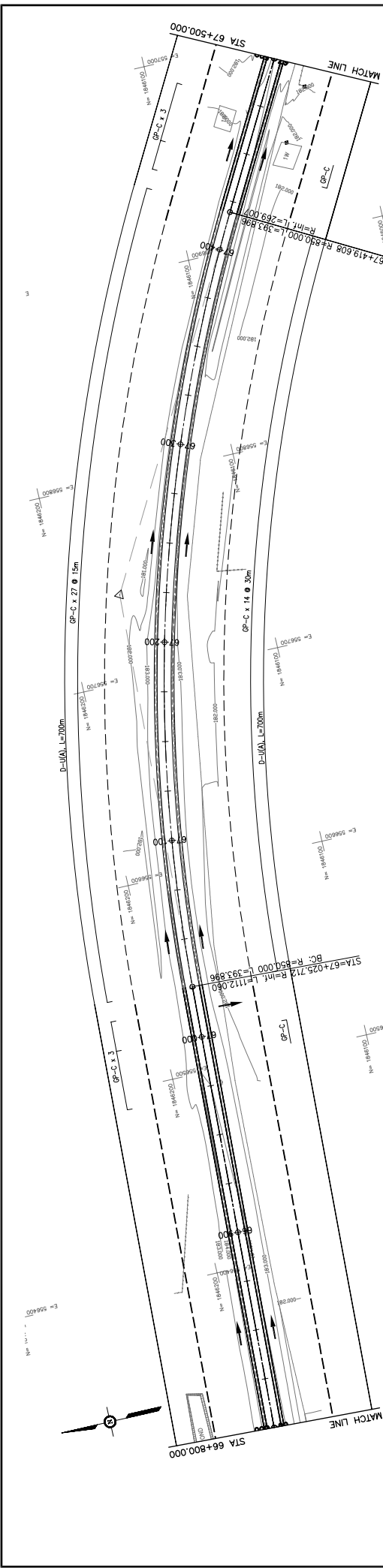
MINISTRY OF PUBLIC WORKS AND TRANSPORT
 LAO PEOPLE'S DEMOCRATIC REPUBLIC

THE PROJECT FOR IMPROVEMENT OF NATIONAL ROAD No.9
 AS EAST-WEST ECONOMIC CORRIDOR IN LAO PDR

PLAN & PROFILE
 SECTION 1: STA 66+100 - 66+800

REV. No.	DATE	DESCRIPTION
1		
2		
3		

SCALE: H=1:2,000
 V=1:200
 DRAWING No.: C-155



GRADIENT	PROPOSED HEIGHT	GROUND LEVEL	STATION	CURVE BAND	SUPERELEVATION LEFT SIDE	SUPERELEVATION RIGHT SIDE	CROSS SECTION TYPE
			66+800	184.228	184.518		
			+825	184.281	184.632		
			+850	184.234	184.587		
			+875	184.187	184.541		
			66+900	184.140	184.495		
			+925	184.099	184.449		
			+950	184.047	184.403		
			+975	184.000	184.357		
			67+000	183.954	184.312		
			+025	183.923	184.264		
			+050	183.849	184.212		
			+075	183.796	184.155		
			67+100	183.739	184.095		
			+125	183.690	184.032		
			+150	183.621	183.970		
			+175	183.537	183.907		
			67+200	183.483	183.845		
			+225	183.396	183.787		
			+250	183.264	183.738		
			+275	183.236	183.698		
			67+300	183.207	183.667		
			+325	183.202	183.641		
			+350	183.211	183.615		
			+375	183.211	183.589		
			67+400	183.214	183.563		
			+425	183.197	183.530		
			+450	183.131	183.486		
			67+500	183.004	183.360		

JAPAN INTERNATIONAL COOPERATION AGENCY
 THE CONSORTIUM OF
ORIENTAL CONSULTANTS CO., LTD.
 INTERNATIONAL DEVELOPMENT CENTER OF JAPAN

MINISTRY OF PUBLIC WORKS AND TRANSPORT
LAO PEOPLE'S DEMOCRATIC REPUBLIC

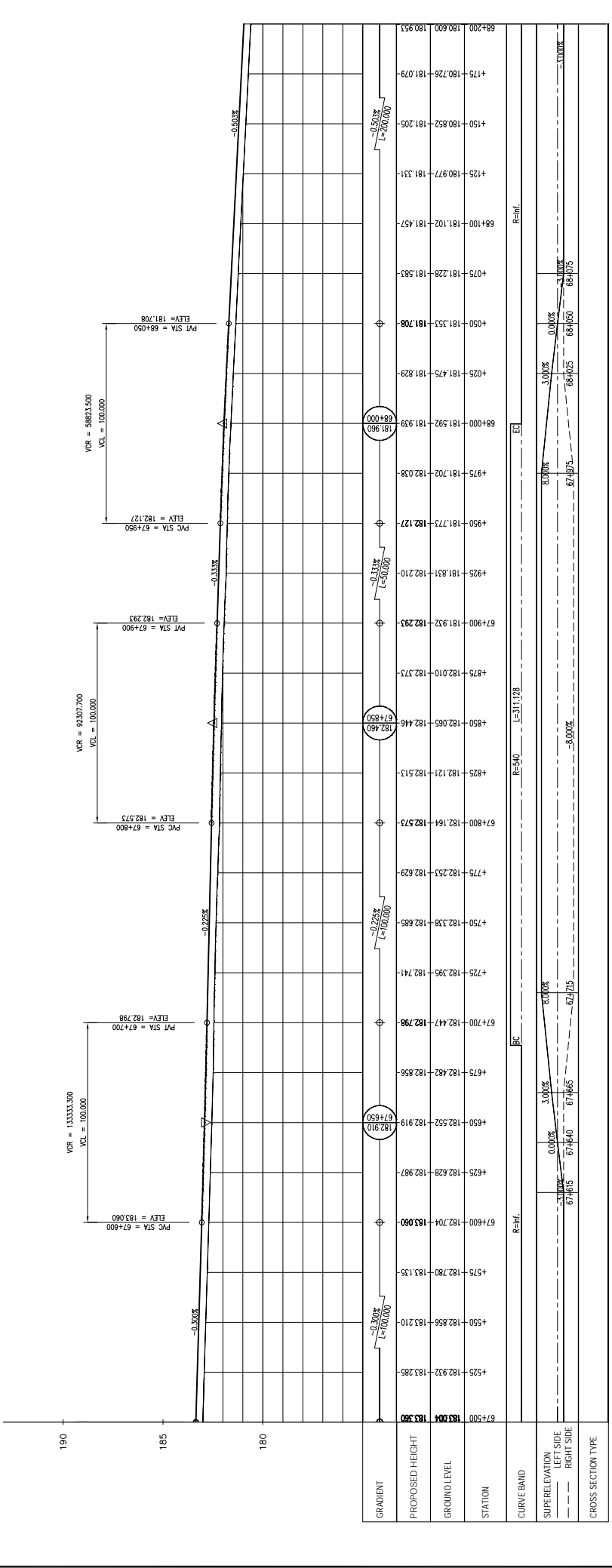
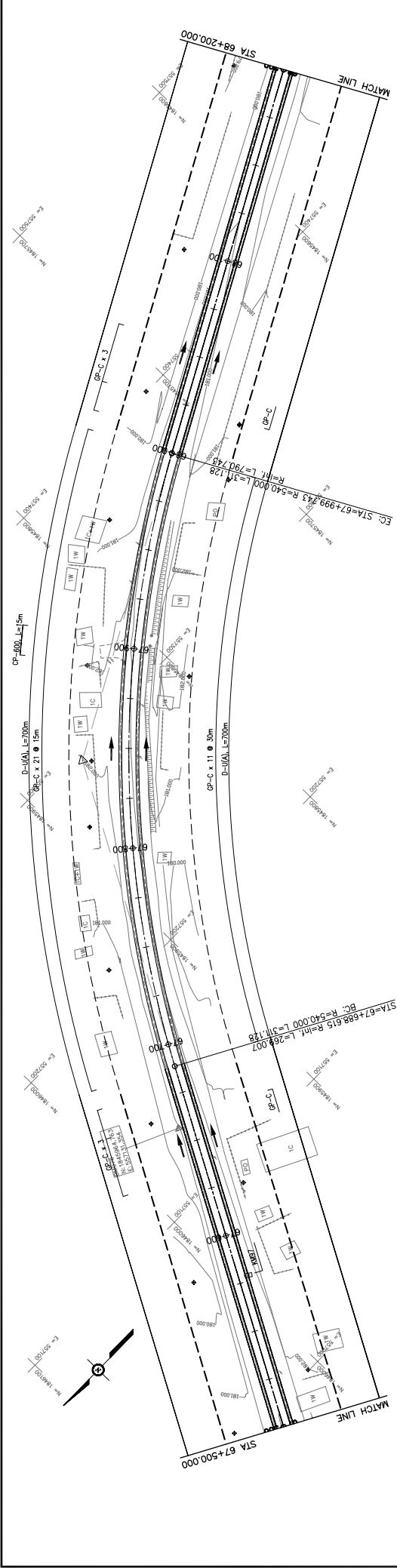
THE PROJECT FOR IMPROVEMENT OF NATIONAL ROAD No.9
AS EAST-WEST ECONOMIC CORRIDOR IN LAO PDR

PLAN & PROFILE
SECTION 1: STA 66+800 - 67+500

REV. No.	DATE	DESCRIPTION	SCALE:
1			H=1:2,000
2			V=1:200

DRAWING No. _____
 DRAWING TITLE _____
 SIGNATURE _____
 NAME _____
 TITLE _____
 PREPARED BY _____
 CHECKED BY _____
 APPROVED BY _____

C-156



STATION	PROPOSED HEIGHT	GROUND LEVEL	STATION	CURVE BAND	SUPERELEVATION LEFT SIDE	SUPERELEVATION RIGHT SIDE	CROSS SECTION TYPE
67+500	183.004	183.000	67+500	R=inf.	0.000%	0.000%	EC
67+525	182.932	183.285	67+525	R=inf.	0.000%	0.000%	EC
67+550	182.856	183.210	67+550	R=inf.	0.000%	0.000%	EC
67+575	182.780	183.135	67+575	R=inf.	0.000%	0.000%	EC
67+600	182.704	183.060	67+600	R=inf.	0.000%	0.000%	EC
67+625	182.628	182.987	67+625	R=inf.	0.000%	0.000%	EC
67+650	182.552	182.919	67+650	R=inf.	0.000%	0.000%	EC
67+675	182.482	182.856	67+675	R=inf.	0.000%	0.000%	EC
67+700	182.447	182.798	67+700	R=inf.	0.000%	0.000%	EC
67+725	182.395	182.741	67+725	R=inf.	0.000%	0.000%	EC
67+750	182.338	182.685	67+750	R=inf.	0.000%	0.000%	EC
67+775	182.253	182.629	67+775	R=inf.	0.000%	0.000%	EC
67+800	182.164	182.573	67+800	R=inf.	0.000%	0.000%	EC
67+825	182.121	182.513	67+825	R=inf.	0.000%	0.000%	EC
67+850	182.065	182.446	67+850	R=inf.	0.000%	0.000%	EC
67+875	182.010	182.373	67+875	R=inf.	0.000%	0.000%	EC
67+900	181.932	182.293	67+900	R=inf.	0.000%	0.000%	EC
67+925	181.831	182.210	67+925	R=inf.	0.000%	0.000%	EC
67+950	181.773	182.127	67+950	R=inf.	0.000%	0.000%	EC
67+975	181.702	182.038	67+975	R=inf.	0.000%	0.000%	EC
68+000	181.592	181.939	68+000	R=inf.	0.000%	0.000%	EC
68+025	181.475	181.829	68+025	R=inf.	0.000%	0.000%	EC
68+050	181.353	181.708	68+050	R=inf.	0.000%	0.000%	EC
68+075	181.228	181.583	68+075	R=inf.	0.000%	0.000%	EC
68+100	181.102	181.457	68+100	R=inf.	0.000%	0.000%	EC
68+125	180.977	181.331	68+125	R=inf.	0.000%	0.000%	EC
68+150	180.852	181.205	68+150	R=inf.	0.000%	0.000%	EC
68+175	180.726	181.079	68+175	R=inf.	0.000%	0.000%	EC
68+200	180.600	180.953	68+200	R=inf.	0.000%	0.000%	EC

JAPAN INTERNATIONAL COOPERATION AGENCY
 THE CONSORTIUM OF
ORIENTAL CONSULTANTS CO., LTD.
 INTERNATIONAL DEVELOPMENT CENTER OF JAPAN

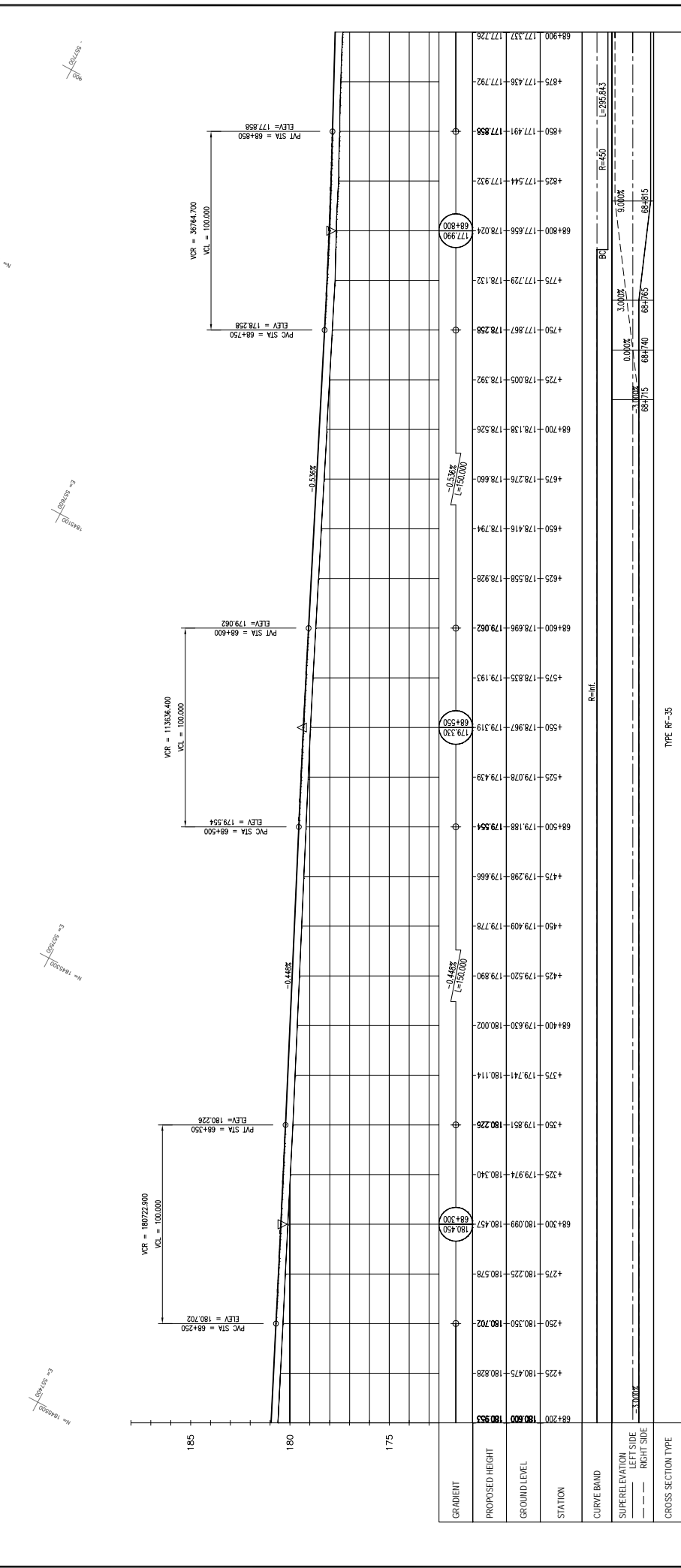
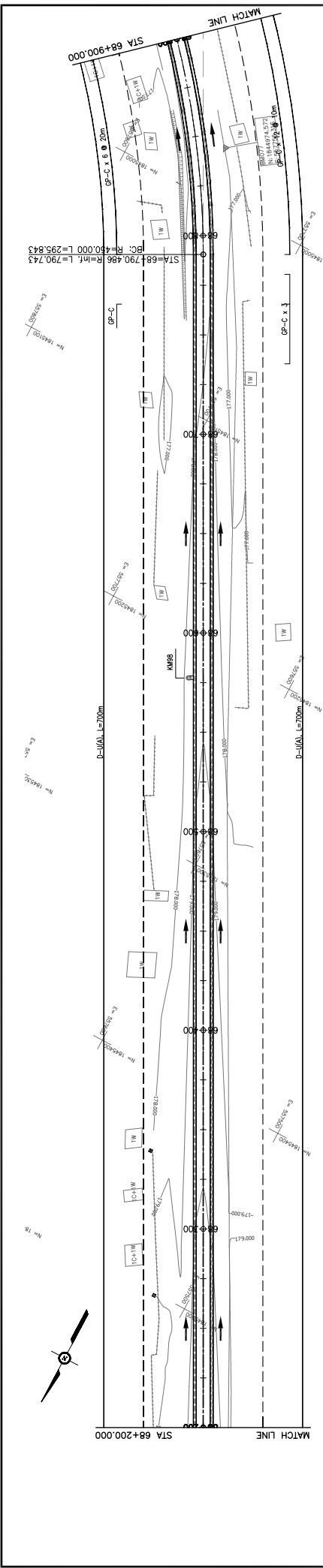
MINISTRY OF PUBLIC WORKS AND TRANSPORT
 LAO PEOPLE'S DEMOCRATIC REPUBLIC

THE PROJECT FOR IMPROVEMENT OF NATIONAL ROAD No.9
AS EAST-WEST ECONOMIC CORRIDOR IN LAO PDR

DRAWING TITLE: **PLAN & PROFILE**
 SECTION 1: STA 67+500 - 68+200

REV. No.	DATE	DESCRIPTION

SCALE: H=1:2,000
 V=1:200
 DRAWING No.: **C-157**



TYPE: RF-35

JAPAN INTERNATIONAL COOPERATION AGENCY
 THE CONSORTIUM OF
 ORIENTAL CONSULTANTS CO., LTD.
 INTERNATIONAL DEVELOPMENT CENTER OF JAPAN

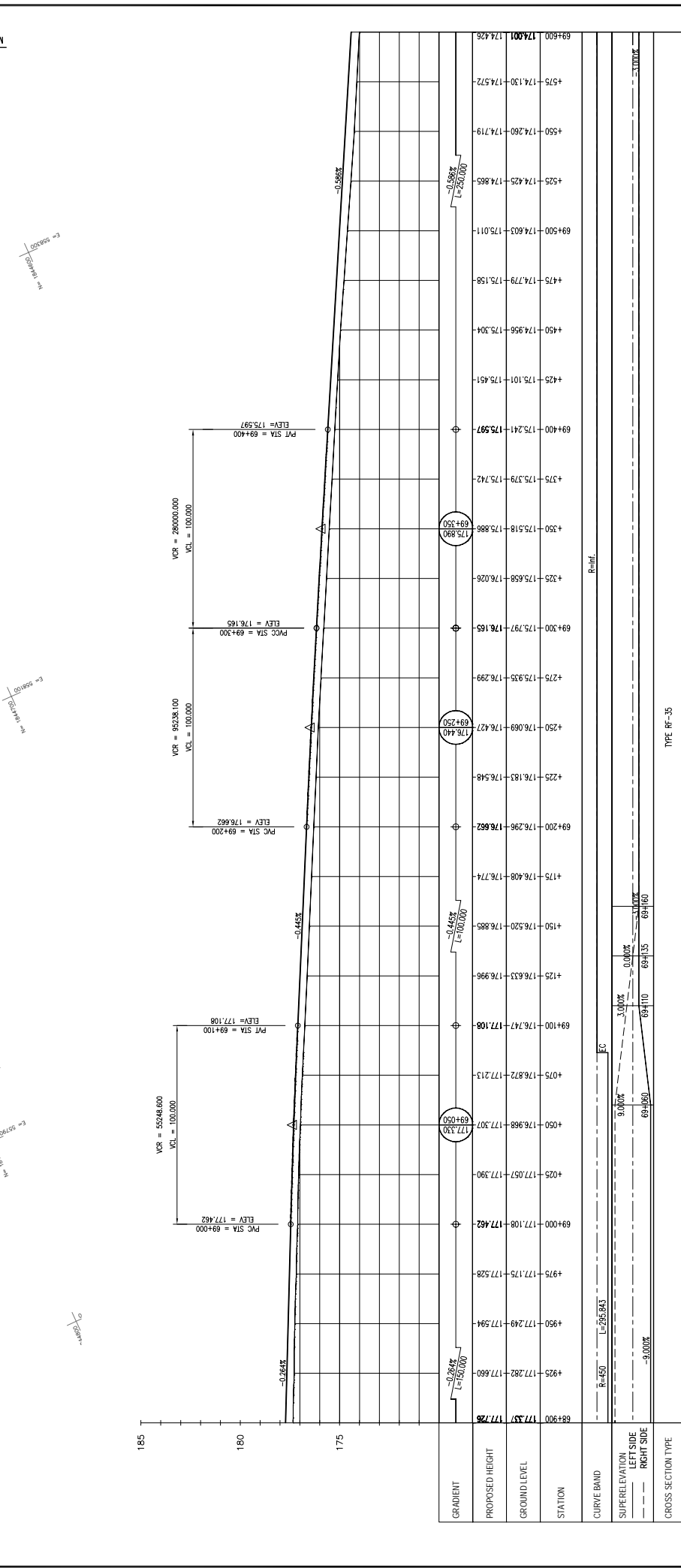
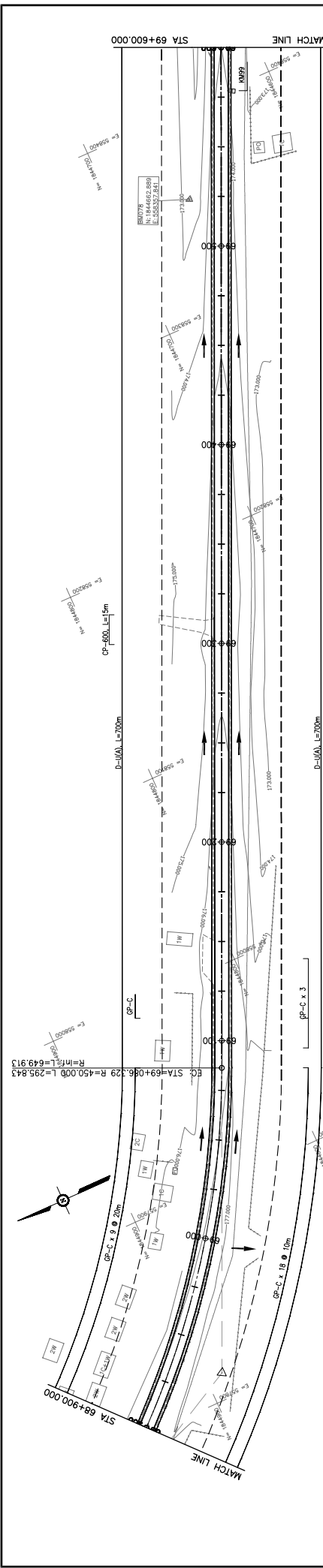
MINISTRY OF PUBLIC WORKS AND TRANSPORT
 LAO PEOPLE'S DEMOCRATIC REPUBLIC

THE PROJECT FOR IMPROVEMENT OF NATIONAL ROAD No.9
 AS EAST-WEST ECONOMIC CORRIDOR IN LAO PDR

DRAWING TITLE: PLAN & PROFILE
 SECTION 1: STA 68+200 - 68+900

REV. No.	DATE	DESCRIPTION
1		
2		
3		
4		

SCALE: H=1:2,000
 V=1:200
 DRAWING No.: C-158



GRADIENT	PROPOSED HEIGHT	GROUND LEVEL	STATION	CURVE BAND	SUPERELEVATION LEFT SIDE	SUPERELEVATION RIGHT SIDE	CROSS SECTION TYPE
-0.263%	177.337	177.78	68+900	R=460 L=295.643	0.000%	-5.000%	TYPE RF-35
-0.457%	177.307	177.390	69+050		0.000%	-5.000%	
-0.457%	177.307	177.213	69+100		0.000%	-5.000%	
-0.457%	176.968	177.462	69+000		0.000%	-5.000%	
-0.457%	176.872	177.528	69+175		0.000%	-5.000%	
-0.457%	177.108	177.594	69+249		0.000%	-5.000%	
-0.457%	177.282	177.660	69+318		0.000%	-5.000%	
-0.457%	177.471	177.726	69+400		0.000%	-5.000%	
-0.457%	176.747	177.108	69+500		0.000%	-5.000%	
-0.457%	176.633	176.996	69+550		0.000%	-5.000%	
-0.457%	176.520	176.885	69+600		0.000%	-5.000%	
-0.457%	176.408	176.774	69+650		0.000%	-5.000%	
-0.457%	176.296	176.662	69+700		0.000%	-5.000%	
-0.457%	176.183	176.548	69+750		0.000%	-5.000%	
-0.457%	176.069	176.437	69+800		0.000%	-5.000%	
-0.457%	175.956	176.324	69+850		0.000%	-5.000%	
-0.457%	175.842	176.211	69+900		0.000%	-5.000%	
-0.588%	175.518	175.886	69+950		0.000%	-5.000%	
-0.588%	175.379	175.742	69+990		0.000%	-5.000%	
-0.588%	175.241	175.597	70+000		0.000%	-5.000%	
-0.588%	175.101	175.451	70+050		0.000%	-5.000%	
-0.588%	174.956	175.304	70+100		0.000%	-5.000%	
-0.588%	174.779	175.158	70+150		0.000%	-5.000%	
-0.588%	174.603	175.011	70+200		0.000%	-5.000%	
-0.588%	174.425	174.865	70+250		0.000%	-5.000%	
-0.588%	174.260	174.719	70+300		0.000%	-5.000%	
-0.588%	174.130	174.572	70+350		0.000%	-5.000%	
-0.588%	174.001	174.426	70+400		0.000%	-5.000%	

JAPAN INTERNATIONAL COOPERATION AGENCY
 THE CONSORTIUM OF
ORIENTAL CONSULTANTS CO., LTD.
 INTERNATIONAL DEVELOPMENT CENTER OF JAPAN

MINISTRY OF PUBLIC WORKS AND TRANSPORT
LAO PEOPLE'S DEMOCRATIC REPUBLIC

THE PROJECT FOR IMPROVEMENT OF NATIONAL ROAD No.9
AS EAST-WEST ECONOMIC CORRIDOR IN LAO PDR

PLAN & PROFILE
SECTION 1: STA 68+900 - 69+600

DRAWING TITLE

REV. No.	DATE	DESCRIPTION

SCALE: H=1:2,000
V=1:200

DRAWING No. **C-159**