

STATION	ELEVATION	GRADIENT
69+600	174.001	174.426
69+650	173.873	174.279
69+700	173.490	173.980
69+750	173.308	173.707
69+800	173.181	173.573
69+850	173.254	173.640
69+900	173.041	173.500
69+950	173.043	173.526
69+980	173.193	173.543
69+990	173.043	173.543
70+000	173.204	173.550
70+025	173.144	173.551
70+050	173.168	173.470
70+075	173.088	173.378
70+100	172.931	173.250
70+125	172.763	173.088
70+150	172.576	172.890
70+175	172.332	172.638
70+200	172.048	172.390
70+225	171.747	172.105
70+250	171.472	171.820
70+275	171.189	171.535
70+300	170.899	171.250

JAPAN INTERNATIONAL COOPERATION AGENCY
 THE CONSORTIUM OF
ORIENTAL CONSULTANTS CO., LTD.
 INTERNATIONAL DEVELOPMENT CENTER OF JAPAN

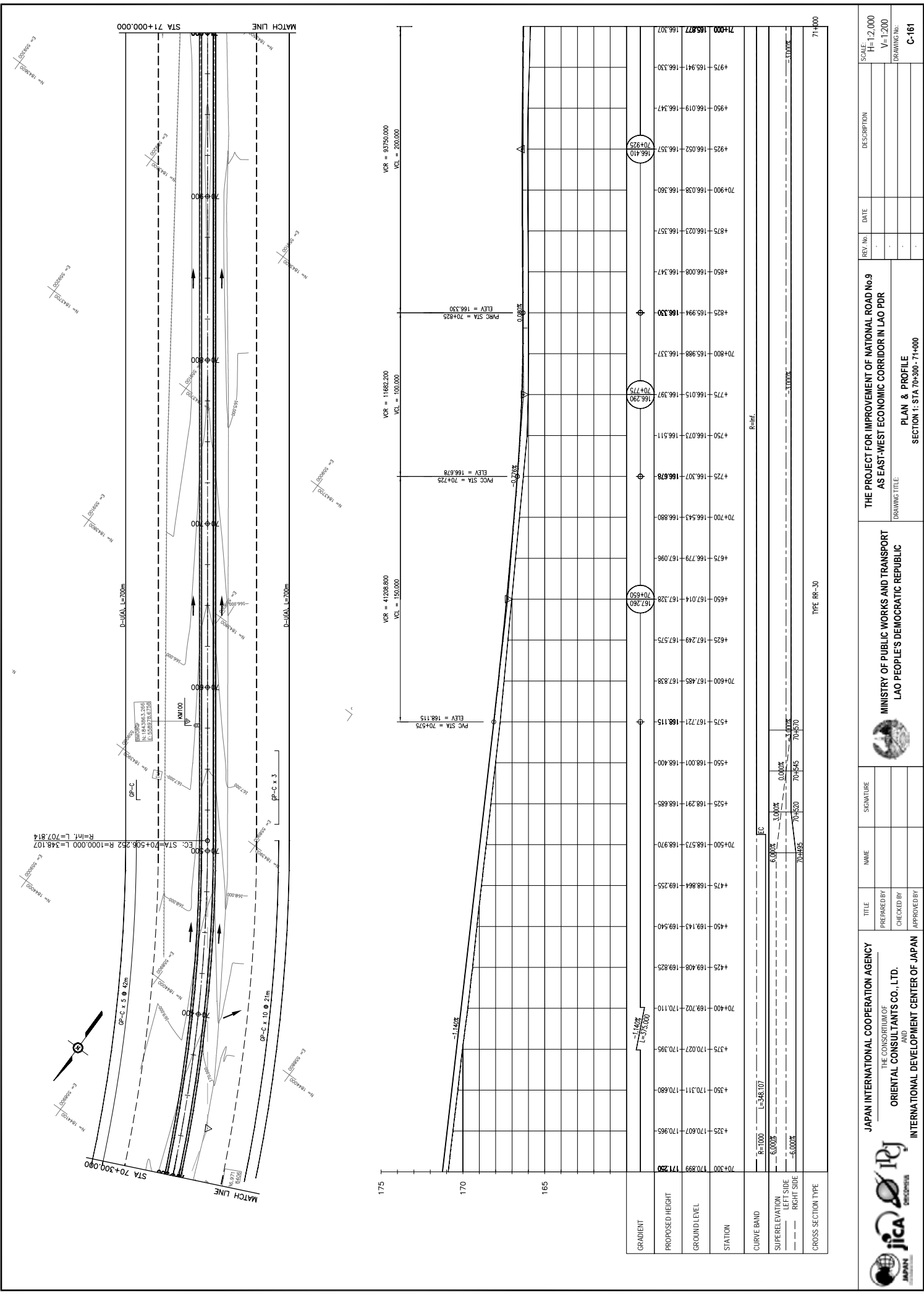
MINISTRY OF PUBLIC WORKS AND TRANSPORT
LAO PEOPLE'S DEMOCRATIC REPUBLIC

THE PROJECT FOR IMPROVEMENT OF NATIONAL ROAD No.9
AS EAST-WEST ECONOMIC CORRIDOR IN LAO PDR

DRAWING TITLE: **PLAN & PROFILE**
 SECTION 1: STA 69+600 - 70+300

REV. No.	DATE	DESCRIPTION

SCALE: H=1:2,000
 V=1:200
 DRAWING No.: **C-160**



STATION	PROPOSED HEIGHT	GROUND LEVEL	STATION
70+300	170.889	171.250	70+300
4325	170.607	170.965	4325
4350	170.311	170.680	4350
4375	170.027	170.395	4375
70+400	169.702	170.110	70+400
4425	169.408	169.825	4425
4450	169.143	169.540	4450
4475	168.864	169.255	4475
70+500	168.573	168.970	70+500
4525	168.291	168.685	4525
4550	168.001	168.400	4550
4575	167.721	168.115	4575
70+600	167.485	167.838	70+600
4625	167.249	167.575	4625
4650	167.014	167.308	4650
4675	166.779	167.098	4675
70+700	166.543	166.880	70+700
4725	166.307	166.678	4725
4750	166.073	166.511	4750
4775	166.015	166.397	4775
70+800	165.988	166.337	70+800
4825	165.994	166.330	4825
4850	166.008	166.347	4850
4875	166.023	166.357	4875
70+900	166.038	166.360	70+900
4925	166.052	166.357	4925
4950	166.019	166.347	4950
4975	165.941	166.330	4975
71+000	165.877	166.307	71+000

GRADIENT: 1:1.40%

CURVE BAND: R=1000, L=348.07

SUPERELEVATION: LEFT SIDE 6.000%, RIGHT SIDE -6.000%

CROSS SECTION TYPE: TYPE RR-30

VC = 41208.800, VCL = 150.0000, PVI STA = 70+575, ELEV = 168.115

VC = 11682.200, VCL = 100.0000, PVI STA = 70+725, ELEV = 168.678

VC = 93750.000, VCL = 200.0000, PVI STA = 70+825, ELEV = 168.330

EG: STA=70+506.252, R=1000.000, L=348.107, R=inf, L=707.814

GP-C x 5 @ 42m, GP-C x 10 @ 21m, GP-C x 3

MINIMUM CLEARANCE: 4.5m

MINIMUM CLEARANCE: 4.5m

MINIMUM CLEARANCE: 4.5m

MINIMUM CLEARANCE: 4.5m

MINIMUM CLEARANCE: 4.5m

MINIMUM CLEARANCE: 4.5m

MINIMUM CLEARANCE: 4.5m

MINIMUM CLEARANCE: 4.5m

MINIMUM CLEARANCE: 4.5m

MINIMUM CLEARANCE: 4.5m

MINIMUM CLEARANCE: 4.5m

MINIMUM CLEARANCE: 4.5m

MINIMUM CLEARANCE: 4.5m

MINIMUM CLEARANCE: 4.5m

MINIMUM CLEARANCE: 4.5m

MINIMUM CLEARANCE: 4.5m

MINIMUM CLEARANCE: 4.5m

MINIMUM CLEARANCE: 4.5m

MINIMUM CLEARANCE: 4.5m

MINIMUM CLEARANCE: 4.5m

MINIMUM CLEARANCE: 4.5m

MINIMUM CLEARANCE: 4.5m

MINIMUM CLEARANCE: 4.5m

MINIMUM CLEARANCE: 4.5m

MINIMUM CLEARANCE: 4.5m

MINIMUM CLEARANCE: 4.5m

MINIMUM CLEARANCE: 4.5m

MINIMUM CLEARANCE: 4.5m

MINIMUM CLEARANCE: 4.5m

MINIMUM CLEARANCE: 4.5m

MINIMUM CLEARANCE: 4.5m

MINIMUM CLEARANCE: 4.5m

MINIMUM CLEARANCE: 4.5m

MINIMUM CLEARANCE: 4.5m

MINIMUM CLEARANCE: 4.5m

MINIMUM CLEARANCE: 4.5m

MINIMUM CLEARANCE: 4.5m

MINIMUM CLEARANCE: 4.5m

MINIMUM CLEARANCE: 4.5m

MINIMUM CLEARANCE: 4.5m

MINIMUM CLEARANCE: 4.5m

MINIMUM CLEARANCE: 4.5m

MINIMUM CLEARANCE: 4.5m

MINIMUM CLEARANCE: 4.5m

MINIMUM CLEARANCE: 4.5m

MINIMUM CLEARANCE: 4.5m

MINIMUM CLEARANCE: 4.5m

MINIMUM CLEARANCE: 4.5m

MINIMUM CLEARANCE: 4.5m

MINIMUM CLEARANCE: 4.5m

MINIMUM CLEARANCE: 4.5m

MINIMUM CLEARANCE: 4.5m

MINIMUM CLEARANCE: 4.5m

MINIMUM CLEARANCE: 4.5m

MINIMUM CLEARANCE: 4.5m

MINIMUM CLEARANCE: 4.5m

MINIMUM CLEARANCE: 4.5m

MINIMUM CLEARANCE: 4.5m

MINIMUM CLEARANCE: 4.5m

MINIMUM CLEARANCE: 4.5m

MINIMUM CLEARANCE: 4.5m

MINIMUM CLEARANCE: 4.5m

MINIMUM CLEARANCE: 4.5m

MINIMUM CLEARANCE: 4.5m

MINIMUM CLEARANCE: 4.5m

MINIMUM CLEARANCE: 4.5m

MINIMUM CLEARANCE: 4.5m

MINIMUM CLEARANCE: 4.5m

MINIMUM CLEARANCE: 4.5m

MINIMUM CLEARANCE: 4.5m

MINIMUM CLEARANCE: 4.5m

MINIMUM CLEARANCE: 4.5m

MINIMUM CLEARANCE: 4.5m

MINIMUM CLEARANCE: 4.5m

MINIMUM CLEARANCE: 4.5m

MINIMUM CLEARANCE: 4.5m

MINIMUM CLEARANCE: 4.5m

MINIMUM CLEARANCE: 4.5m

JAPAN INTERNATIONAL COOPERATION AGENCY

THE CONSORTIUM OF
ORIENTAL CONSULTANTS CO., LTD.

INTERNATIONAL DEVELOPMENT CENTER OF JAPAN

MINISTRY OF PUBLIC WORKS AND TRANSPORT
LAO PEOPLE'S DEMOCRATIC REPUBLIC

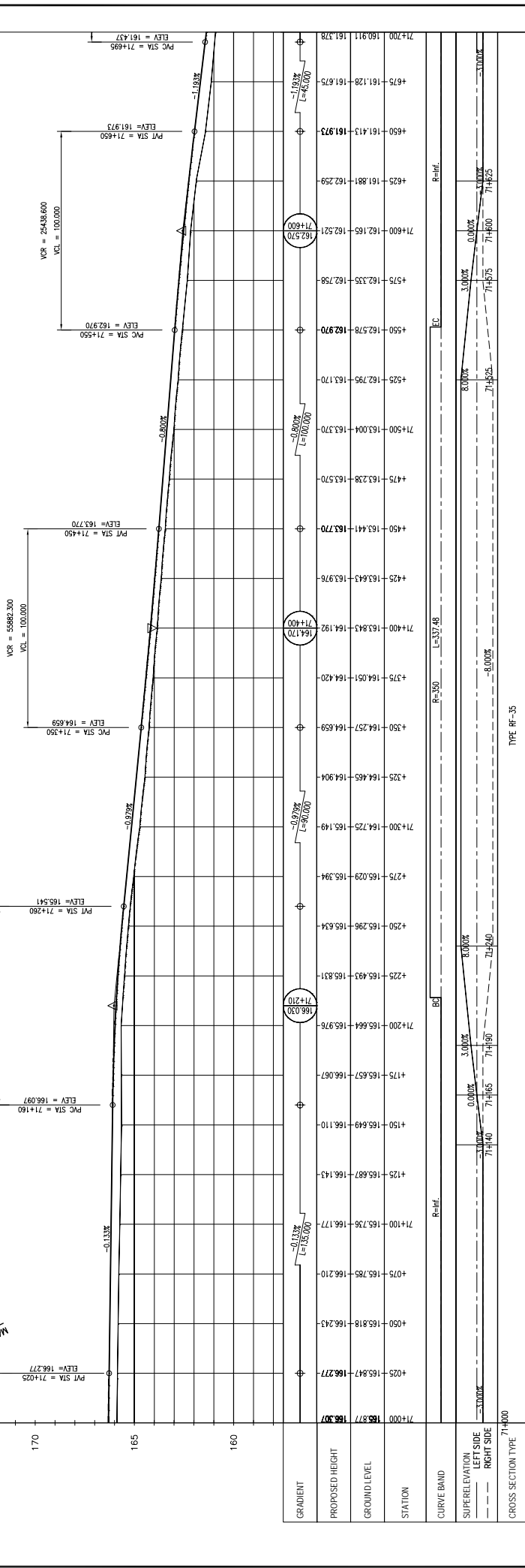
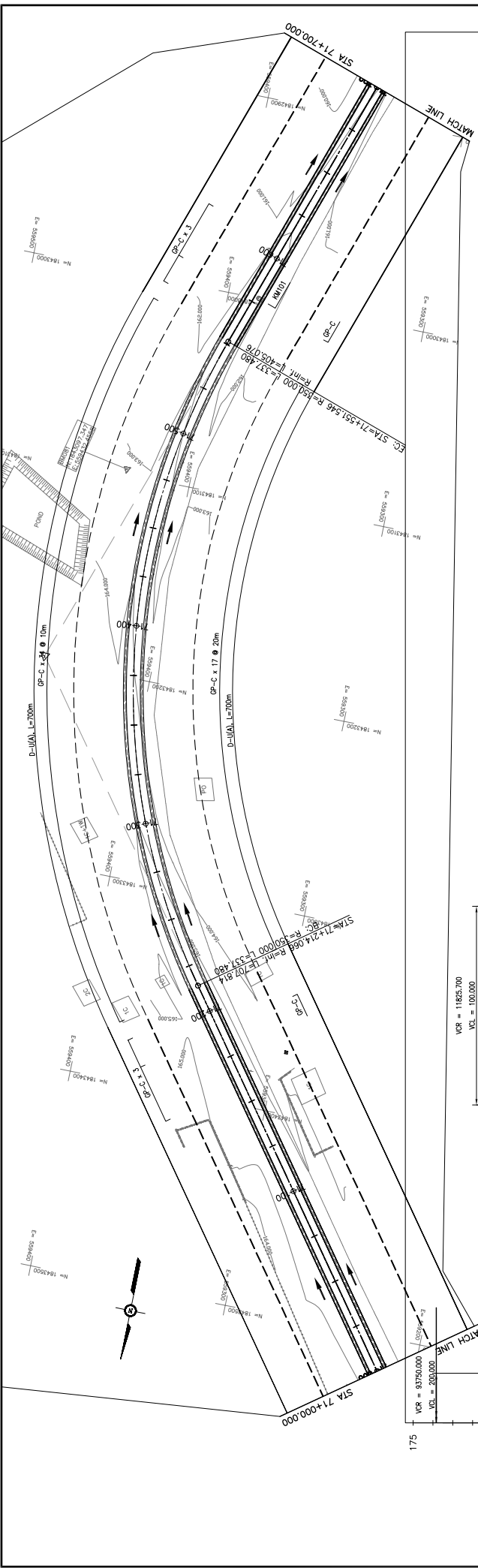
PLAN & PROFILE

SECTION 1: STA 70+300 - 71+000

REV. No.	DATE	DESCRIPTION

SCALE: H=1:2,000
V=1:200

DRAWING No. **C-161**



STATION	PROPOSED HEIGHT	GROUND LEVEL	CURVE BAND	SUPERELEVATION LEFT SIDE	SUPERELEVATION RIGHT SIDE
71+000	185.87	186.50		0.00%	0.00%
71+025	185.87	186.27		0.00%	0.00%
71+050	185.818	186.243		0.00%	0.00%
71+075	185.785	186.210		0.00%	0.00%
71+100	185.736	186.177		0.00%	0.00%
71+125	185.687	186.143		0.00%	0.00%
71+150	185.649	186.110		0.00%	0.00%
71+175	185.657	186.087		0.00%	0.00%
71+200	185.664	186.076		0.00%	0.00%
71+225	185.493	185.831		0.00%	0.00%
71+250	185.296	185.634		0.00%	0.00%
71+275	185.029	185.394		0.00%	0.00%
71+300	184.725	185.149		0.00%	0.00%
71+325	184.465	184.904		0.00%	0.00%
71+350	184.257	184.659		0.00%	0.00%
71+375	184.051	184.420		0.00%	0.00%
71+400	183.843	184.192		0.00%	0.00%
71+425	183.643	183.976		0.00%	0.00%
71+450	183.441	183.770		0.00%	0.00%
71+475	183.238	183.570		0.00%	0.00%
71+500	183.004	183.370		0.00%	0.00%
71+525	182.795	183.170		0.00%	0.00%
71+550	182.578	182.970		0.00%	0.00%
71+575	182.335	182.758		0.00%	0.00%
71+600	182.168	182.521		0.00%	0.00%
71+625	181.881	182.259		0.00%	0.00%
71+650	181.413	181.973		0.00%	0.00%
71+675	181.128	181.675		0.00%	0.00%
71+700	180.911	181.378		0.00%	0.00%

PLAN & PROFILE
SECTION 1: STA 71+000 - 71+700

DRAWING TITLE

MINISTRY OF PUBLIC WORKS AND TRANSPORT
LAO PEOPLE'S DEMOCRATIC REPUBLIC

THE PROJECT FOR IMPROVEMENT OF NATIONAL ROAD No.9
AS EAST-WEST ECONOMIC CORRIDOR IN LAO PDR

SCALE: H=1:2,000
V=1:200

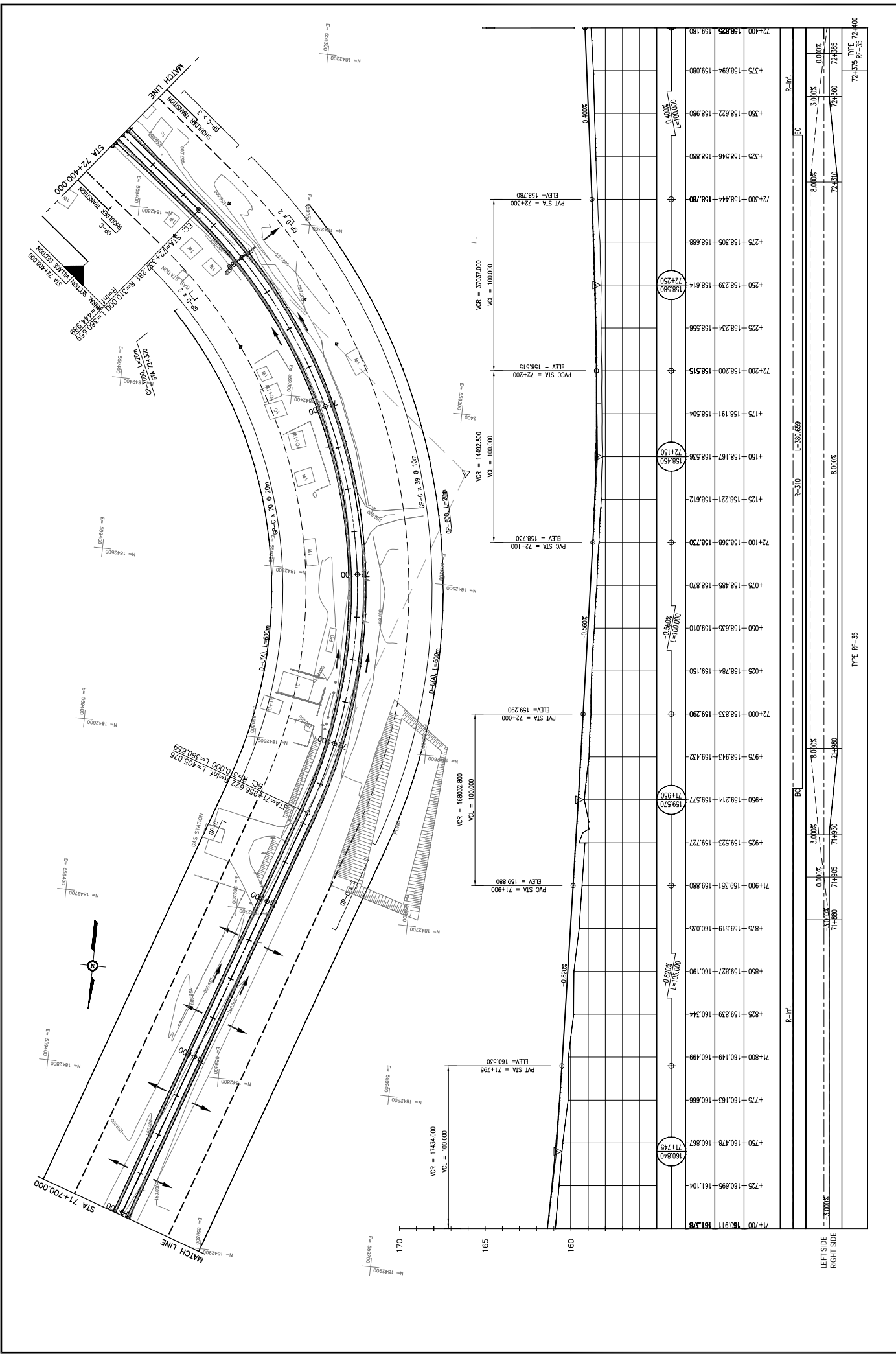
DRAWING NO. C-162

REV. No.	DATE	DESCRIPTION

TITLE	NAME	SIGNATURE
PREPARED BY		
CHECKED BY		
APPROVED BY		

JAPAN INTERNATIONAL COOPERATION AGENCY
THE CONSORTIUM OF
ORIENTAL CONSULTANTS CO., LTD.
INTERNATIONAL DEVELOPMENT CENTER OF JAPAN

jica JICA ORIENTAL CONSULTANTS CO., LTD.



PLAN & PROFILE
SECTION 1: STA 71+700 - 72+400

MINISTRY OF PUBLIC WORKS AND TRANSPORT
LAO PEOPLE'S DEMOCRATIC REPUBLIC

JAPAN INTERNATIONAL COOPERATION AGENCY
THE CONSORTIUM OF
ORIENTAL CONSULTANTS CO., LTD.
INTERNATIONAL DEVELOPMENT CENTER OF JAPAN

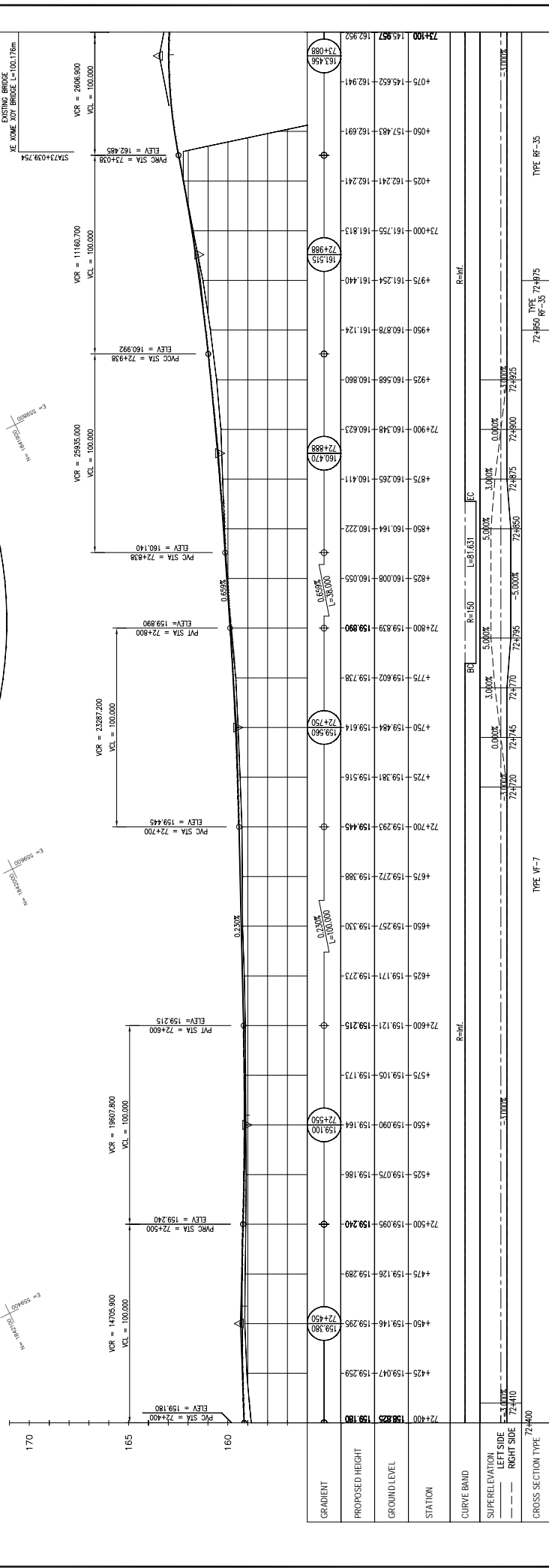
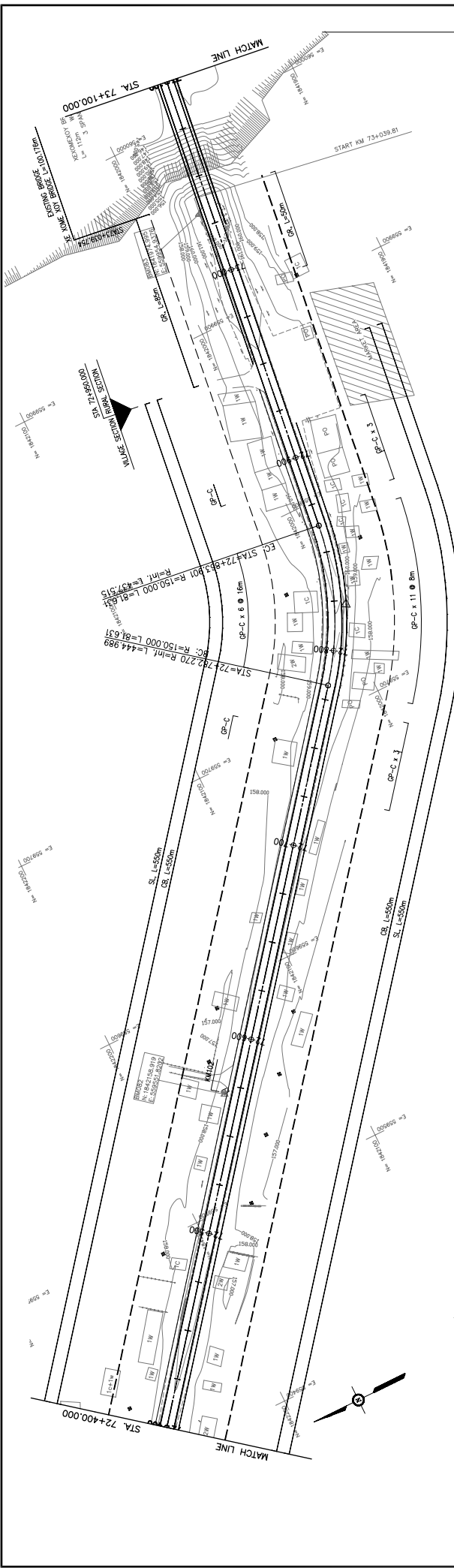
THE PROJECT FOR IMPROVEMENT OF NATIONAL ROAD No.9
AS EAST-WEST ECONOMIC CORRIDOR IN LAO PDR

DRAWING TITLE: **PLAN & PROFILE**
SECTION 1: STA 71+700 - 72+400

REV. No.	DATE	DESCRIPTION

SCALE: H=1:2,000
V=1:200
DRAWING No.: **C-163**

TYPE: RF-35



STATION	PROPOSED HEIGHT	GROUND LEVEL	GRADIENT
72+400	158.825	159.180	
72+425	159.047	159.250	
72+450	159.148	159.295	
72+475	159.128	159.289	
72+500	159.095	159.240	
72+525	159.075	159.186	
72+550	159.090	159.164	
72+575	159.105	159.173	
72+600	159.121	159.215	
72+625	159.171	159.273	
72+650	159.257	159.330	
72+675	159.272	159.388	
72+700	159.293	159.445	
72+725	159.381	159.516	
72+750	159.484	159.614	
72+775	159.602	159.738	
72+800	159.839	159.890	
72+825	160.008	160.055	
72+850	160.164	160.222	
72+875	160.265	160.411	
72+900	160.348	160.623	
72+925	160.568	160.860	
72+950	160.878	161.124	
72+975	161.254	161.440	
73+000	161.755	161.813	
73+025	162.241	162.241	
73+050	157.483	162.691	
73+075	145.652	162.941	
73+100	145.957	162.952	

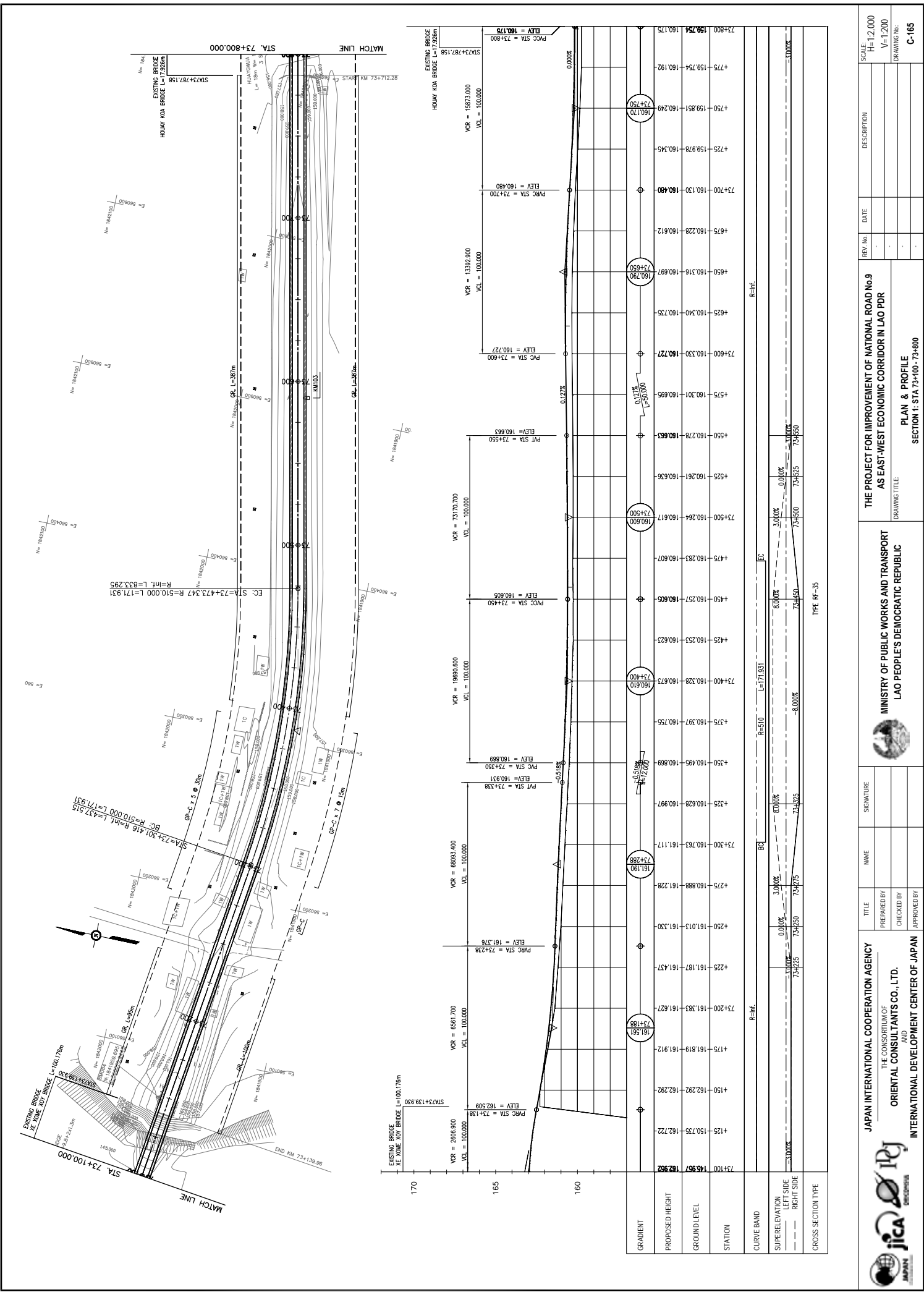
JAPAN INTERNATIONAL COOPERATION AGENCY
 THE CONSORTIUM OF
 ORIENTAL CONSULTANTS CO., LTD.
 INTERNATIONAL DEVELOPMENT CENTER OF JAPAN

MINISTRY OF PUBLIC WORKS AND TRANSPORT
 LAO PEOPLE'S DEMOCRATIC REPUBLIC

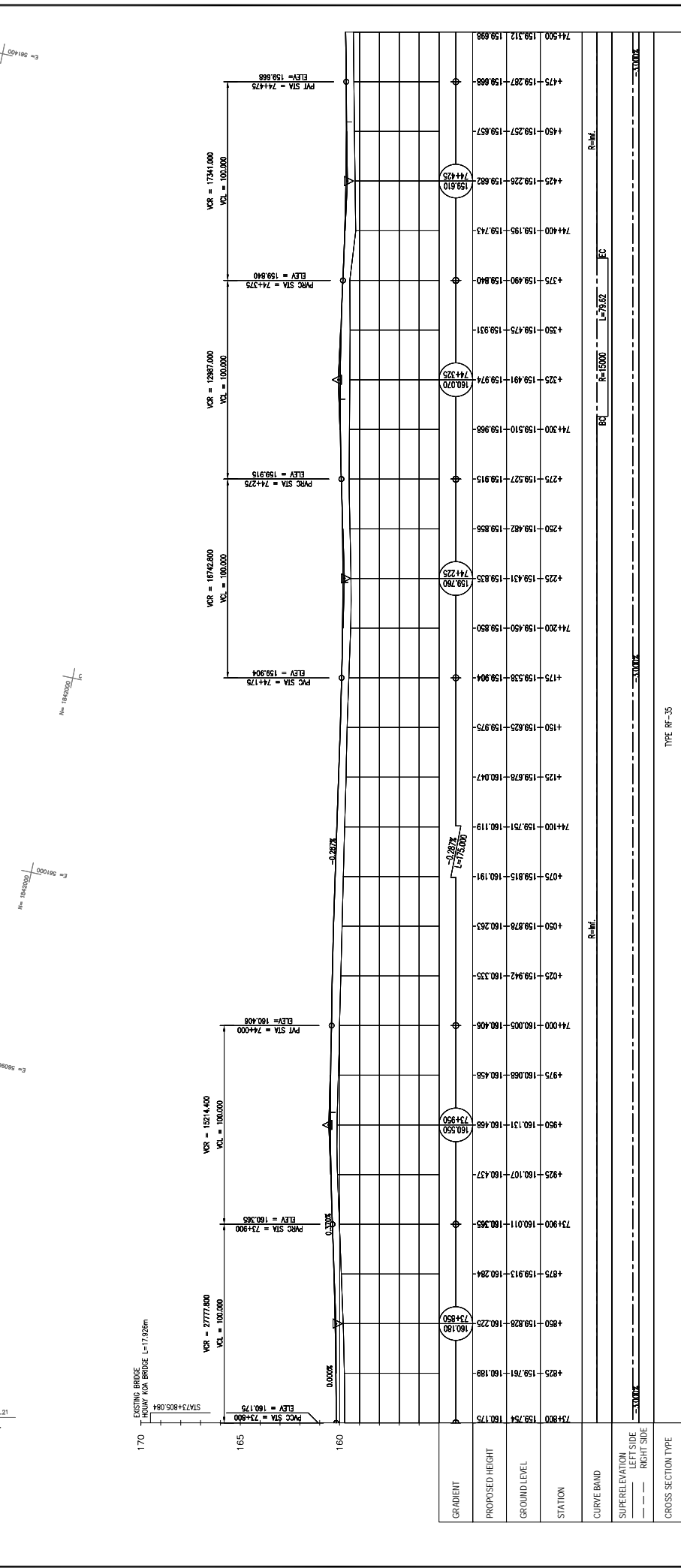
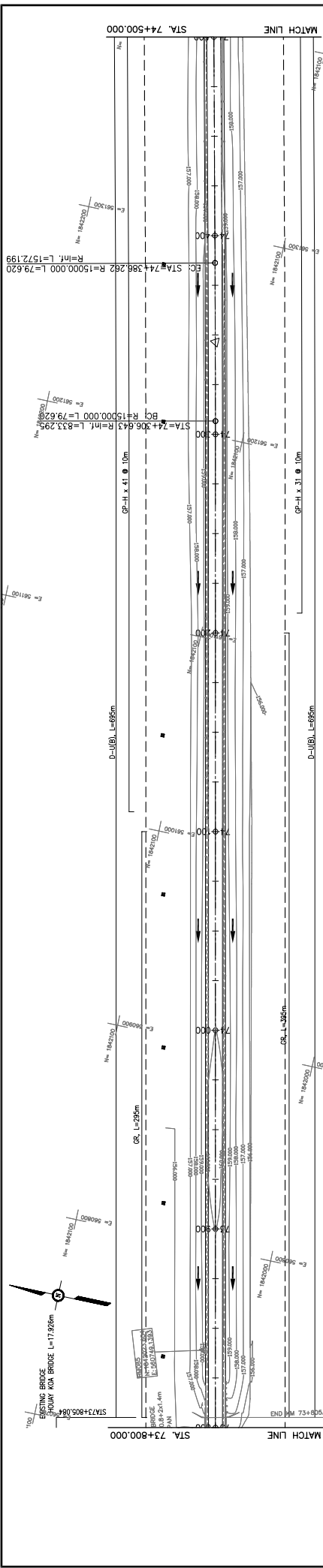
THE PROJECT FOR IMPROVEMENT OF NATIONAL ROAD No.9
 AS EAST-WEST ECONOMIC CORRIDOR IN LAO PDR

PLAN & PROFILE
 SECTION 1: STA 72+400 - 73+100

DRAWING TITLE: PLAN & PROFILE
 DRAWING NO.: C-164
 DATE:
 REV. No.:
 DESCRIPTION:
 SCALE: H=1:2,000
 V=1:200



JAPAN INTERNATIONAL COOPERATION AGENCY THE CONSORTIUM OF ORIENTAL CONSULTANTS CO., LTD. INTERNATIONAL DEVELOPMENT CENTER OF JAPAN		MINISTRY OF PUBLIC WORKS AND TRANSPORT LAO PEOPLE'S DEMOCRATIC REPUBLIC		THE PROJECT FOR IMPROVEMENT OF NATIONAL ROAD No.9 AS EAST-WEST ECONOMIC CORRIDOR IN LAO PDR	
TITLE	PREPARED BY	NAME	SIGNATURE	DRAWING TITLE	SECTION 1: STA 73+100 - 73+800
CHECKED BY	APPROVED BY			PLAN & PROFILE	
DATE	REV. No.	DESCRIPTION	SCALE:		
			H=1:2,000		
			V=1:200		
			DRAWING No.		C-165



STATION	PROPOSED HEIGHT	GROUND LEVEL	GRADIENT
73+800	159.754	160.175	
73+825	159.761	160.189	
73+850	159.828	160.225	73+850
73+875	159.913	160.284	
73+900	160.011	160.365	
73+925	160.107	160.437	
73+950	160.131	160.468	73+950
73+975	160.058	160.458	
74+000	160.005	160.406	
74+025	159.942	160.335	
74+050	159.878	160.283	
74+075	159.815	160.191	
74+100	159.751	160.119	74+100
74+125	159.678	160.047	
74+150	159.625	159.975	
74+175	159.538	159.904	
74+200	159.450	159.850	
74+225	159.431	159.835	74+225
74+250	159.482	159.858	
74+275	159.527	159.915	
74+300	159.510	159.968	
74+325	159.491	159.974	74+325
74+350	159.475	159.931	
74+375	159.490	159.840	
74+400	159.195	159.743	
74+425	159.228	159.682	74+425
74+450	159.257	159.657	
74+475	159.287	159.668	
74+500	159.312	159.698	

TYPE: RP-35

SCALE: H=1:2,000 V=1:200	DESCRIPTION	DATE	REV. No.	DATE

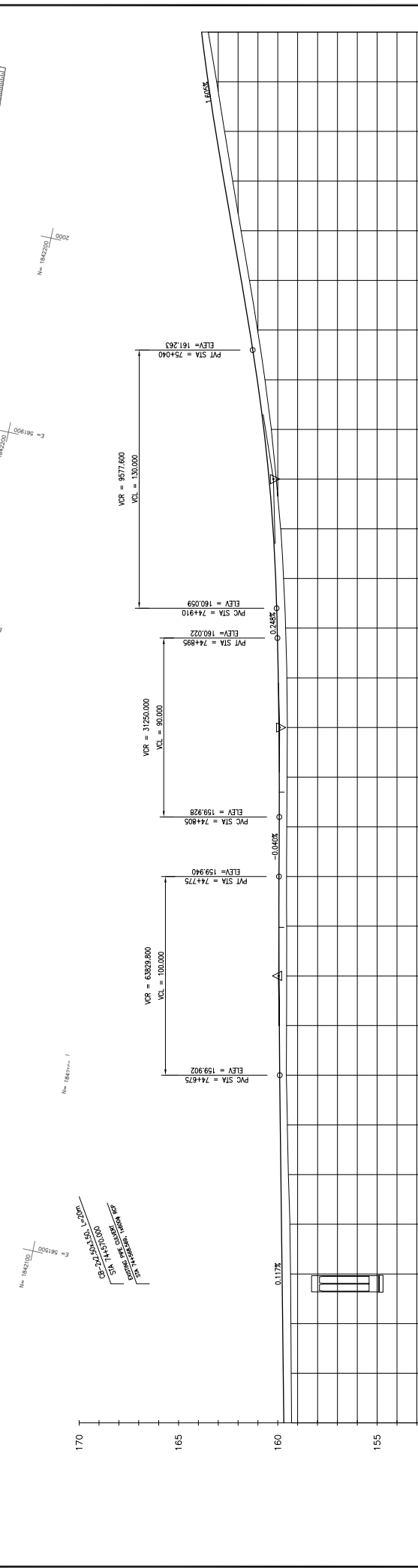
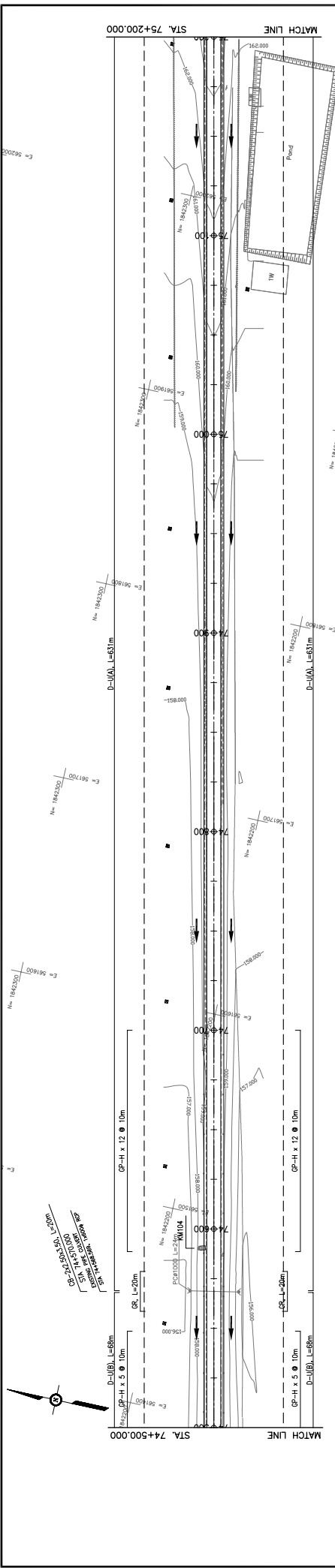
**THE PROJECT FOR IMPROVEMENT OF NATIONAL ROAD No.9
AS EAST-WEST ECONOMIC CORRIDOR IN LAO PDR**

**MINISTRY OF PUBLIC WORKS AND TRANSPORT
LAO PEOPLE'S DEMOCRATIC REPUBLIC**

**JAPAN INTERNATIONAL COOPERATION AGENCY
THE CONSORTIUM OF
ORIENTAL CONSULTANTS CO., LTD.
INTERNATIONAL DEVELOPMENT CENTER OF JAPAN**

**PLAN & PROFILE
SECTION 1: STA 73+800 - 74+500**

DRAWING No. C-166



GRADIENT	PROPOSED HEIGHT	GROUND LEVEL	STATION	CURVE BAND	SUPERELEVATION LEFT SIDE	SUPERELEVATION RIGHT SIDE	CROSS SECTION TYPE
0.11%	159.898	159.312	74+500				
	159.327	159.277	4+25				
	159.341	159.256	4+50				
	159.356	159.285	4+75				
	159.393	159.814	74+800				
	159.472	159.843	4+25				
	159.523	159.873	4+50				
	159.568	159.902	4+75				
	159.561	159.926	74+700				
	159.555	159.940	4+25				
	159.552	159.945	4+50				
	159.550	159.940	74+775				
	159.554	159.930	74+800				
	159.532	159.926	4+25				
	159.520	159.942	4+50				
	159.546	159.978	4+75				
	159.606	160.034	74+900				
	159.706	160.108	4+25				
	159.853	160.242	4+50				
	160.077	160.441	4+75				
	160.325	160.705	75+000				
	160.645	161.034	4+25				
	161.017	161.424	4+50				
	161.420	161.825	4+75				
	161.857	162.227	75+100				
	162.270	162.628	4+25				
	162.675	163.029	4+50				
	163.078	163.431	4+75				
	163.503	163.833	75+200				

JAPAN INTERNATIONAL COOPERATION AGENCY
THE CONSORTIUM OF
ORIENTAL CONSULTANTS CO., LTD.
INTERNATIONAL DEVELOPMENT CENTER OF JAPAN

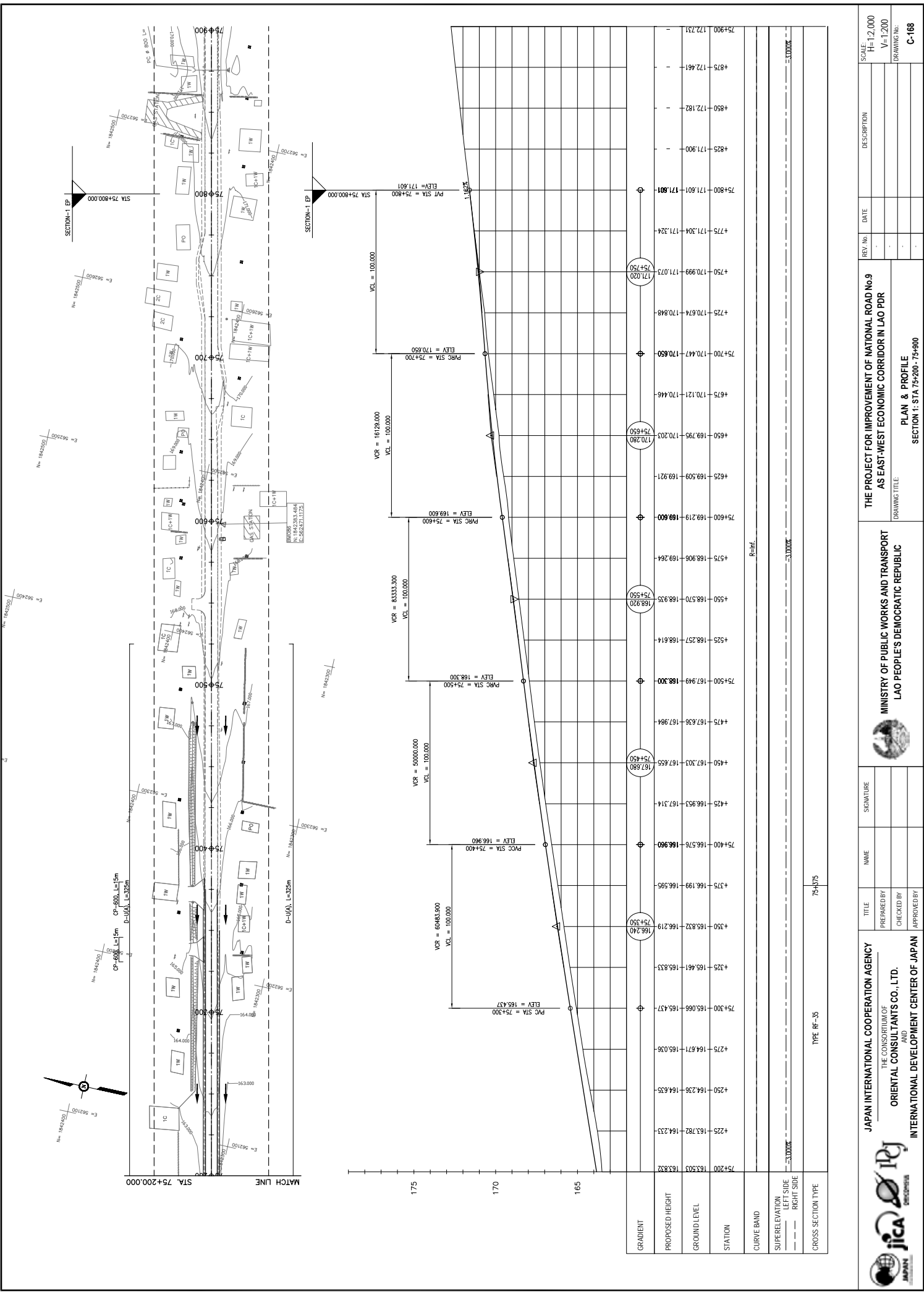
MINISTRY OF PUBLIC WORKS AND TRANSPORT
LAO PEOPLE'S DEMOCRATIC REPUBLIC

THE PROJECT FOR IMPROVEMENT OF NATIONAL ROAD No.9
AS EAST-WEST ECONOMIC CORRIDOR IN LAO PDR

PLAN & PROFILE
SECTION 1: STA 74+500 - 75+200

REV. No.	DATE	DESCRIPTION

SCALE: H=1:2,000
V=1:200
DRAWING No.: **C-167**



REV. No.	DATE	DESCRIPTION	SCALE
1			H=1:2,000
2			V=1:200

DRAWING TITLE	
PLAN & PROFILE	
SECTION 1: STA 75+200 - 75+900	

DRAWING TITLE	
THE PROJECT FOR IMPROVEMENT OF NATIONAL ROAD No.9 AS EAST-WEST ECONOMIC CORRIDOR IN LAO PDR	

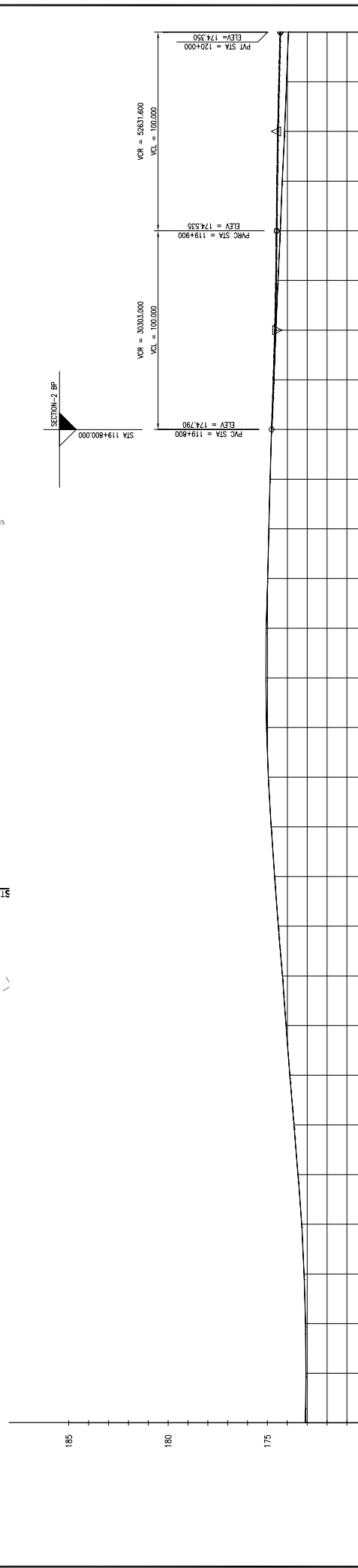
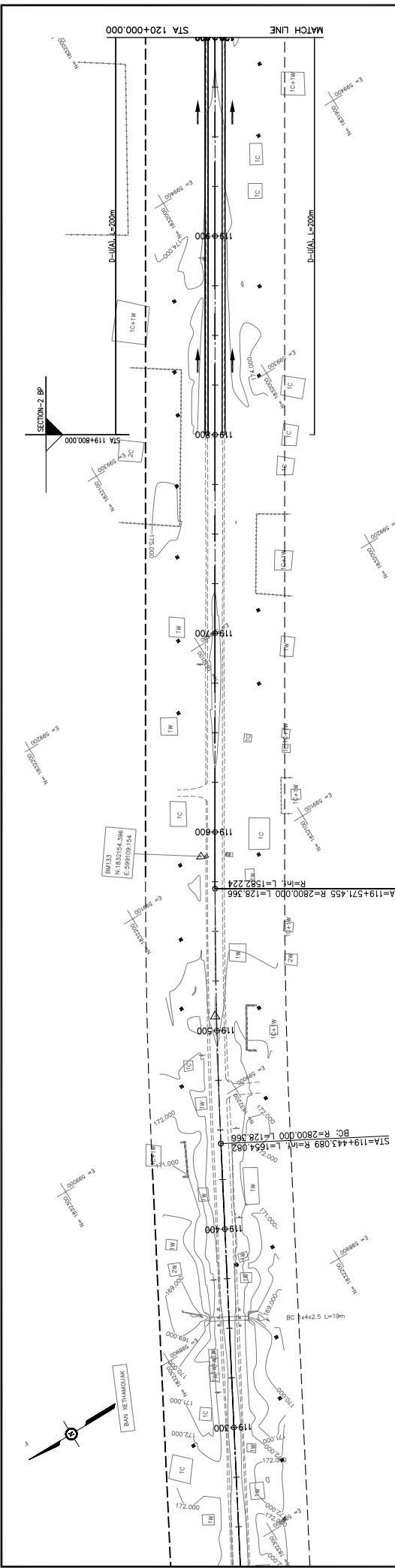
DRAWING TITLE	
MINISTRY OF PUBLIC WORKS AND TRANSPORT LAO PEOPLE'S DEMOCRATIC REPUBLIC	

TITLE	NAME	SIGNATURE
PREPARED BY		
CHECKED BY		
APPROVED BY		

DRAWING TITLE	
JAPAN INTERNATIONAL COOPERATION AGENCY THE CONSORTIUM OF ORIENTAL CONSULTANTS CO., LTD. INTERNATIONAL DEVELOPMENT CENTER OF JAPAN	

DRAWING TITLE	
JICA JAPAN INTERNATIONAL DEVELOPMENT CENTER OF JAPAN	

DRAWING TITLE	
TYPE RF-35	



GRADIENT	PROPOSED HEIGHT	GROUND LEVEL	STATION
			119+300 173.081
			119+400 173.460
			119+425 173.460
			119+450 173.662
			119+475 173.873
			119+500 174.061
			119+525 174.244
			119+550 174.452
			119+575 174.639
			119+600 174.808
			119+625 174.954
			119+650 175.041
			119+675 175.089
			119+700 175.082
			119+725 174.986
			119+750 174.926
			119+775 174.863
			119+800 174.790
			119+825 174.673
			119+850 174.572
			119+875 174.461
			119+900 174.351
			119+925 174.249
			119+950 174.133
			119+975 174.033
			120+000 173.941

TYPE: RP-40

JAPAN INTERNATIONAL COOPERATION AGENCY
 THE CONSORTIUM OF
ORIENTAL CONSULTANTS CO., LTD.
INTERNATIONAL DEVELOPMENT CENTER OF JAPAN

MINISTRY OF PUBLIC WORKS AND TRANSPORT
LAO PEOPLE'S DEMOCRATIC REPUBLIC

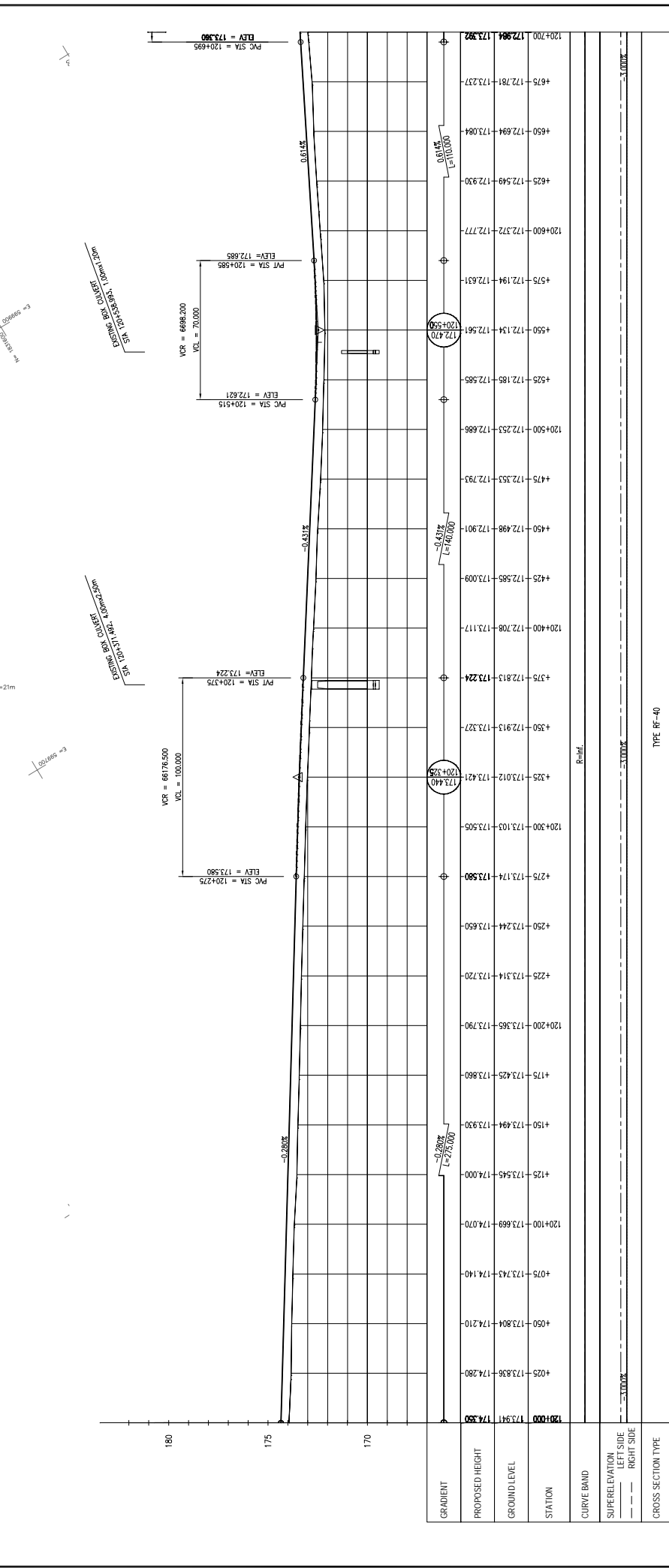
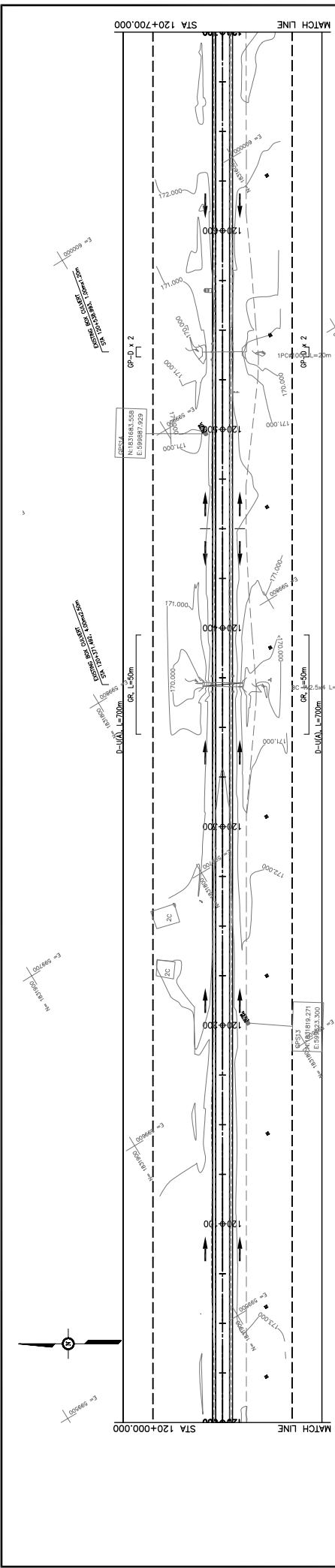
THE PROJECT FOR IMPROVEMENT OF NATIONAL ROAD No.9
AS EAST-WEST ECONOMIC CORRIDOR IN LAO PDR

PLAN & PROFILE
SECTION 2: STA. 119+300 - 120+000

SCALE: H=1:2,000
 V=1:200
 DRAWING NO.: C-201

REV. No.	DATE	DESCRIPTION

SIGNATURE: _____
 NAME: _____
 TITLE: _____
 PREPARED BY: _____
 CHECKED BY: _____
 APPROVED BY: _____



STATION	PROPOSED HEIGHT	GROUND LEVEL	GRADIENT
120+700	172.984	173.392	
120+650	172.694	173.084	
120+600	172.549	172.930	
120+550	172.372	172.777	
120+500	172.194	172.631	
120+450	172.134	172.561	
120+400	172.185	172.585	
120+350	172.253	172.686	
120+300	172.353	172.793	
120+250	172.498	172.901	
120+200	172.585	173.009	
120+150	172.708	173.117	
120+100	172.813	173.224	
120+050	172.913	173.327	
120+000	173.012	173.421	
120+700	173.440	173.425	
120+650	173.444	173.505	
120+600	173.174	173.580	
120+550	173.244	173.650	
120+500	173.314	173.720	
120+450	173.368	173.790	
120+400	173.425	173.860	
120+350	173.494	173.930	
120+300	173.545	174.000	
120+250	173.669	174.070	
120+200	173.743	174.140	
120+150	173.804	174.210	
120+100	173.836	174.280	
120+050	173.914	174.350	

TYPE: Rf-40

MINISTRY OF PUBLIC WORKS AND TRANSPORT
LAO PEOPLE'S DEMOCRATIC REPUBLIC

THE PROJECT FOR IMPROVEMENT OF NATIONAL ROAD No.9
AS EAST-WEST ECONOMIC CORRIDOR IN LAO PDR

DRAWING TITLE: PLAN & PROFILE
SECTION 2: STA. 120+000 - 120+700

JAPAN INTERNATIONAL COOPERATION AGENCY
THE CONSORTIUM OF
ORIENTAL CONSULTANTS CO., LTD.
INTERNATIONAL DEVELOPMENT CENTER OF JAPAN

SCALE: H=1:2,000
V=1:200

REV. No. DATE DESCRIPTION

SIGNATURE

NAME

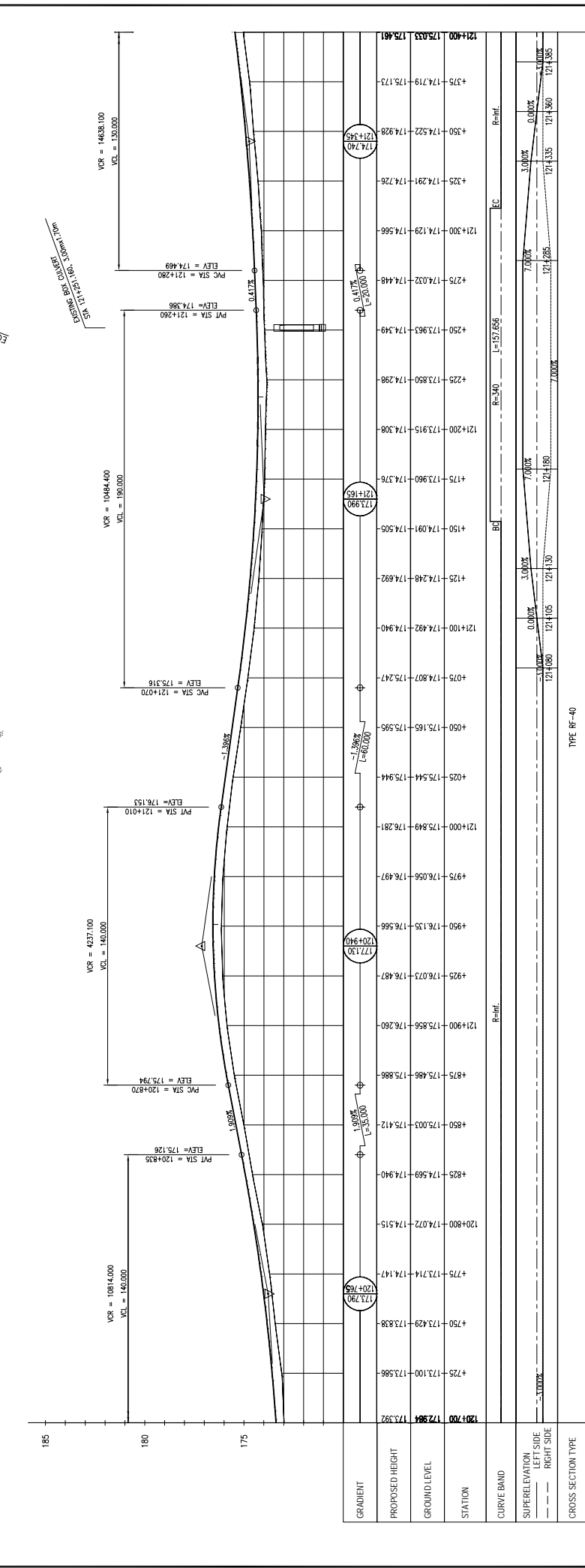
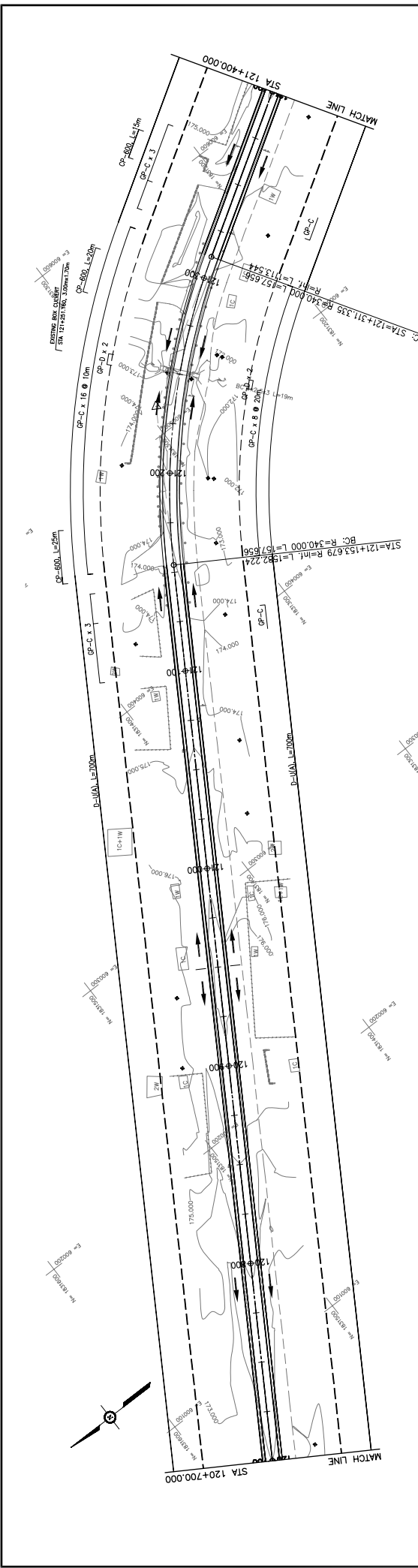
TITLE

PREPARED BY

CHECKED BY

APPROVED BY

DRAWING No. C-202



GRADIENT	PROPOSED HEIGHT	GROUND LEVEL	STATION	CURVE BAND	SUPERELEVATION LEFT SIDE	SUPERELEVATION RIGHT SIDE	CROSS SECTION TYPE
120+700	172.984	173.392	120+700		3.000%	3.000%	
120+750	173.429	173.838	120+750		3.000%	3.000%	
120+800	174.569	174.940	120+800		3.000%	3.000%	
120+850	175.003	175.412	120+850		3.000%	3.000%	
120+900	175.486	175.886	120+900		3.000%	3.000%	
120+950	176.073	176.487	120+950		3.000%	3.000%	
121+000	176.544	176.944	121+000		3.000%	3.000%	
121+050	177.130	177.530	121+050		3.000%	3.000%	
121+100	177.716	178.126	121+100		3.000%	3.000%	
121+150	178.302	178.712	121+150		3.000%	3.000%	
121+200	178.888	179.308	121+200		3.000%	3.000%	
121+250	179.474	179.894	121+250		3.000%	3.000%	
121+300	180.060	200.480	121+300		3.000%	3.000%	
121+350	180.646	201.066	121+350		3.000%	3.000%	
121+400	181.232	201.652	121+400		3.000%	3.000%	

JAPAN INTERNATIONAL COOPERATION AGENCY
 THE CONSORTIUM OF
ORIENTAL CONSULTANTS CO., LTD.
INTERNATIONAL DEVELOPMENT CENTER OF JAPAN

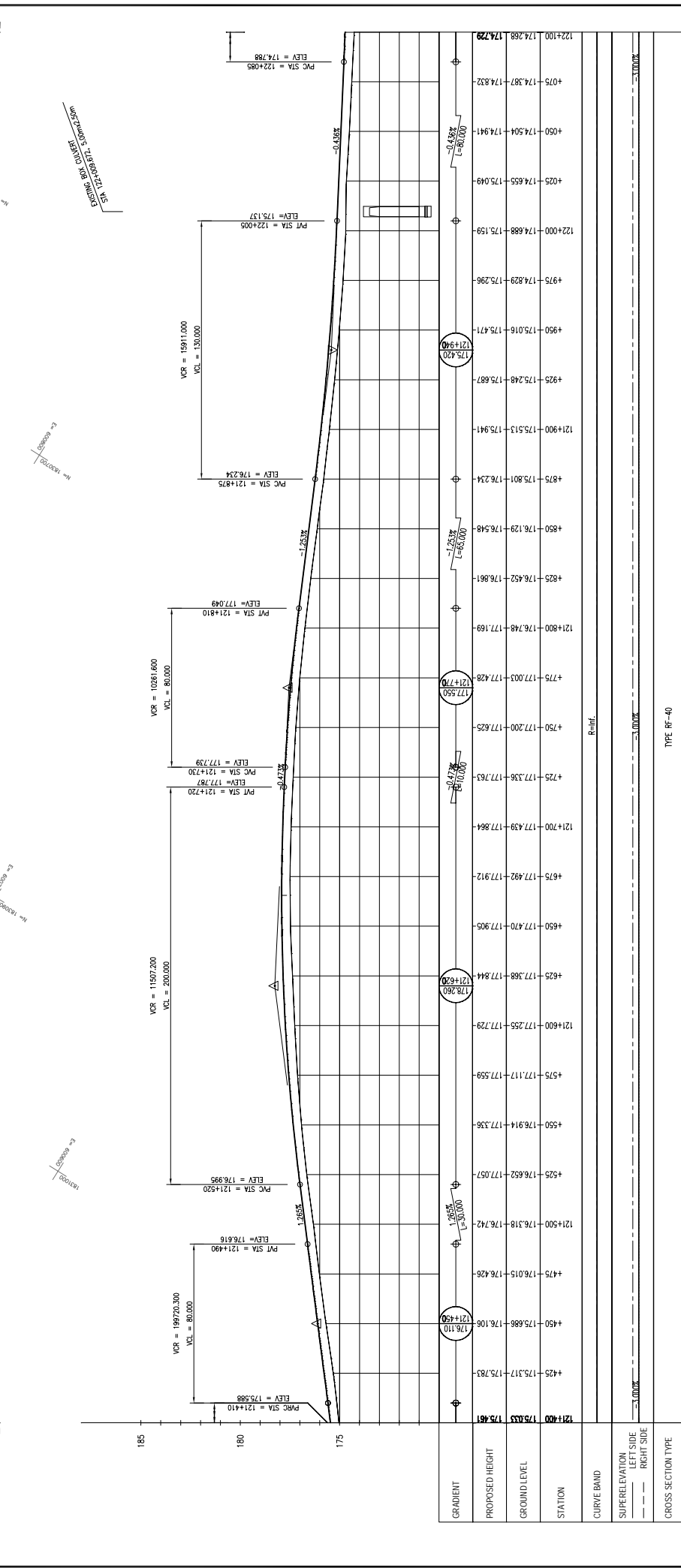
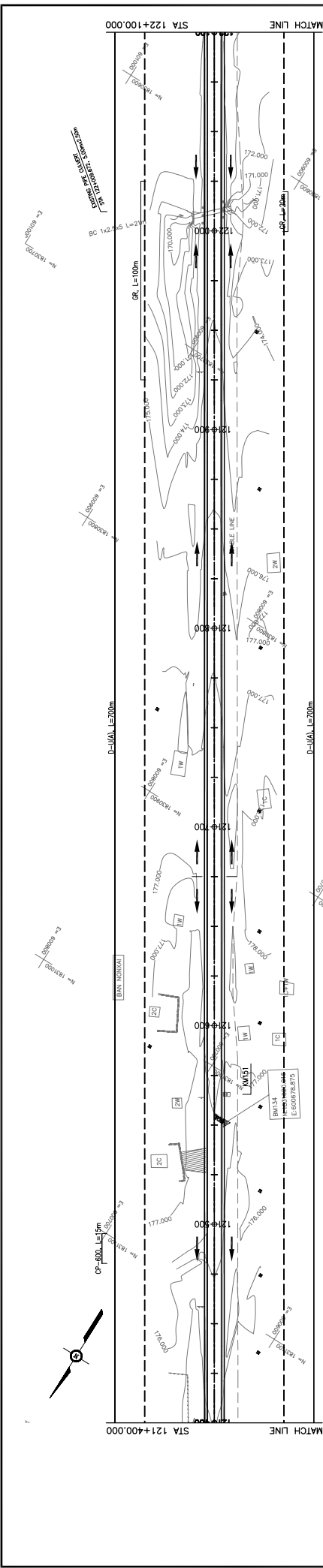
MINISTRY OF PUBLIC WORKS AND TRANSPORT
LAO PEOPLE'S DEMOCRATIC REPUBLIC

THE PROJECT FOR IMPROVEMENT OF NATIONAL ROAD No.9
AS EAST-WEST ECONOMIC CORRIDOR IN LAO PDR

PLAN & PROFILE
SECTION 2: STA. 120+700 - 121+400

REV. No.	DATE	DESCRIPTION

SCALE: H=1:2,000
 V=1:200
 DRAWING No.: **C-203**



STATION	PROPOSED HEIGHT	GROUND LEVEL
121+400	175.035	175.461
121+500	176.015	176.426
121+600	177.000	177.428
121+700	177.992	177.912
121+800	178.984	178.864
121+900	179.976	179.816
122+000	180.968	180.768
122+100	181.960	181.720

JAPAN INTERNATIONAL COOPERATION AGENCY
 THE CONSORTIUM OF
ORIENTAL CONSULTANTS CO., LTD.
 INTERNATIONAL DEVELOPMENT CENTER OF JAPAN

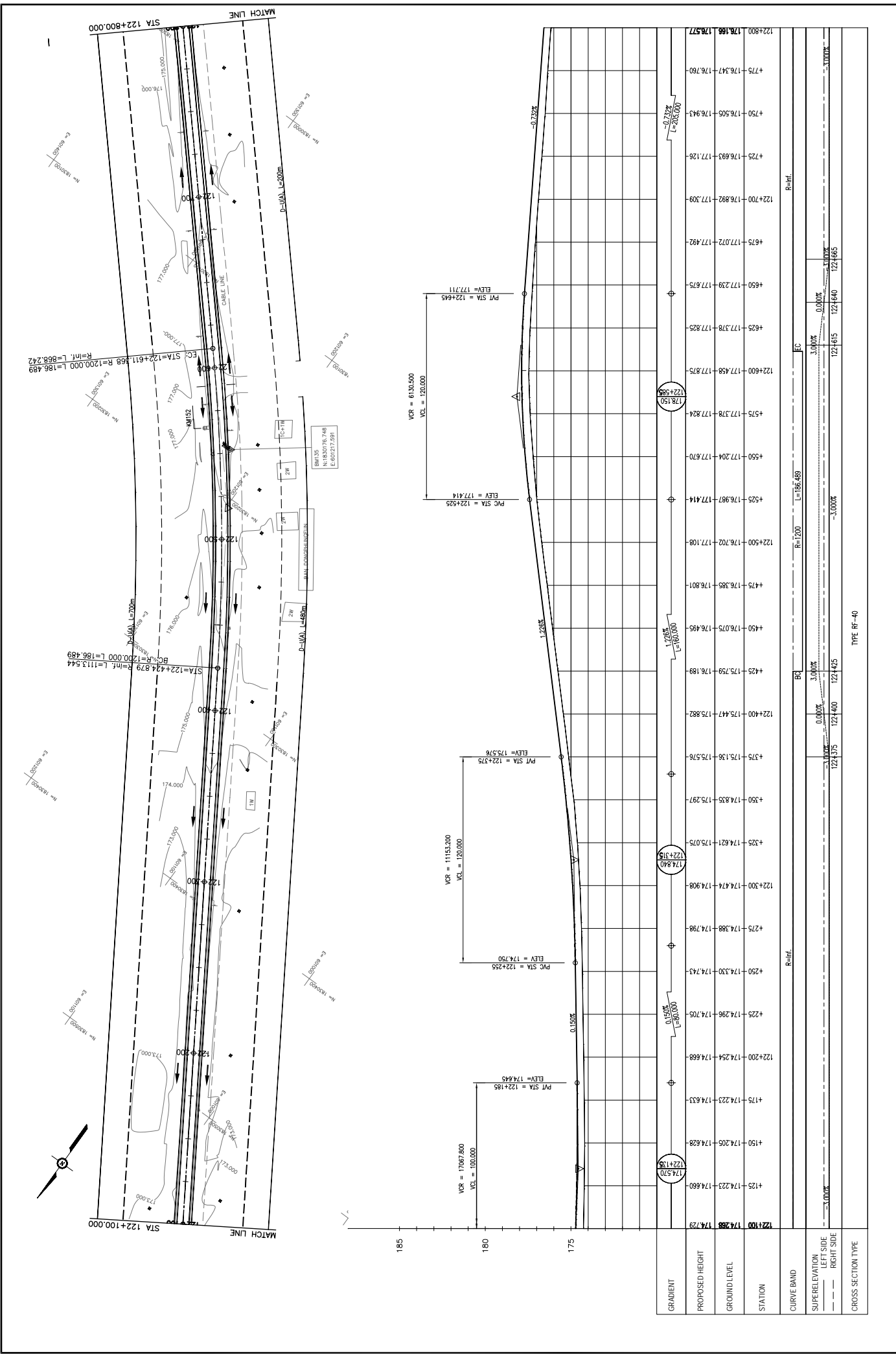
MINISTRY OF PUBLIC WORKS AND TRANSPORT
LAO PEOPLE'S DEMOCRATIC REPUBLIC

THE PROJECT FOR IMPROVEMENT OF NATIONAL ROAD No.9
AS EAST-WEST ECONOMIC CORRIDOR IN LAO PDR

PLAN & PROFILE
SECTION 2: STA. 121+400 - 122+100

REV. No.	DATE	DESCRIPTION

SCALE: H=1:2,000
 V=1:200
 DRAWING No.: C-204



PLAN & PROFILE
SECTION 2: STA. 122+100 - 122+800

DRAWING TITLE: **MINISTRY OF PUBLIC WORKS AND TRANSPORT**
LAO PEOPLE'S DEMOCRATIC REPUBLIC

PROJECT: **THE PROJECT FOR IMPROVEMENT OF NATIONAL ROAD No.9**
AS EAST-WEST ECONOMIC CORRIDOR IN LAO PDR

SCALE: H=1:2,000
V=1:200

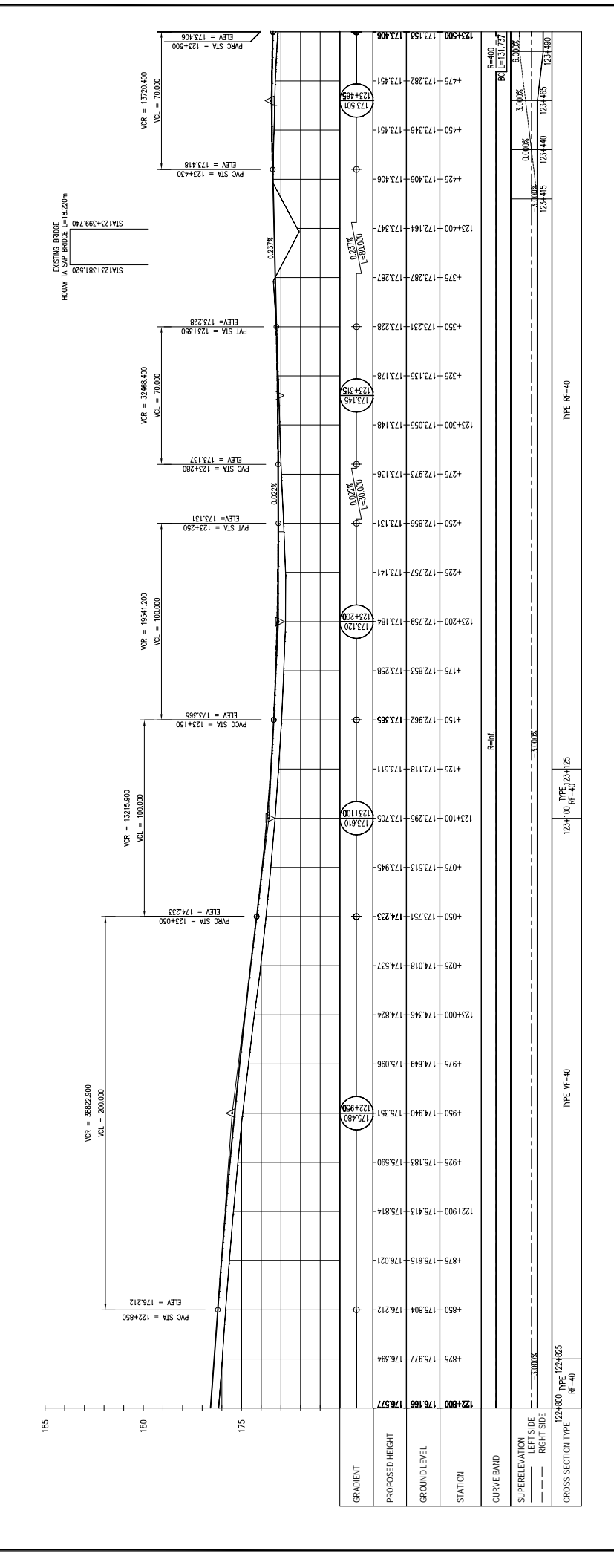
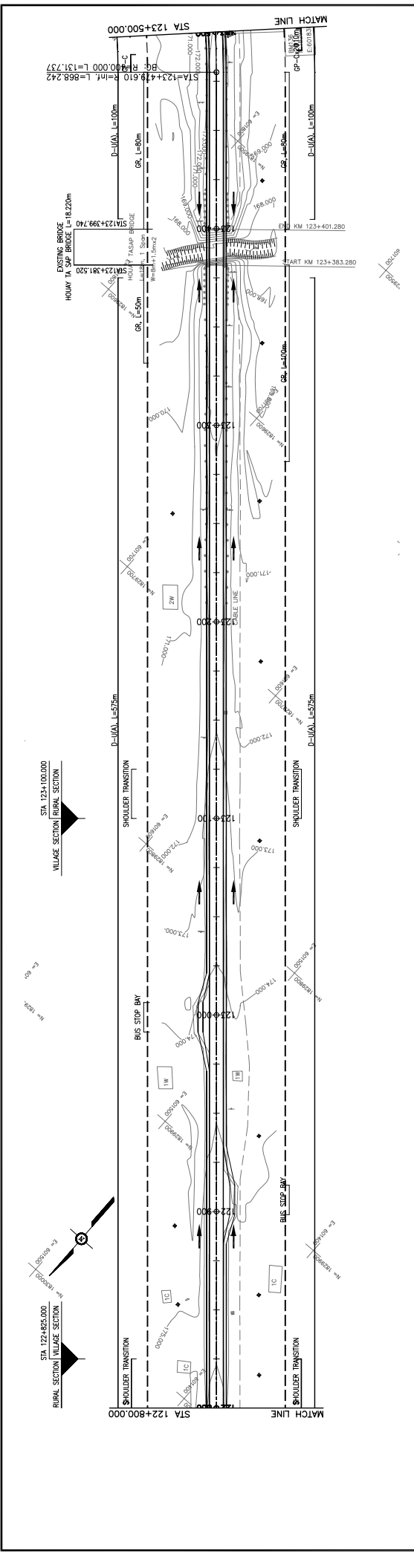
DRAWING NO.: **C-205**

REV. No.	DATE	DESCRIPTION

TYPE: Rf-40

TITLE	NAME	SIGNATURE
PREPARED BY		
CHECKED BY		
APPROVED BY		

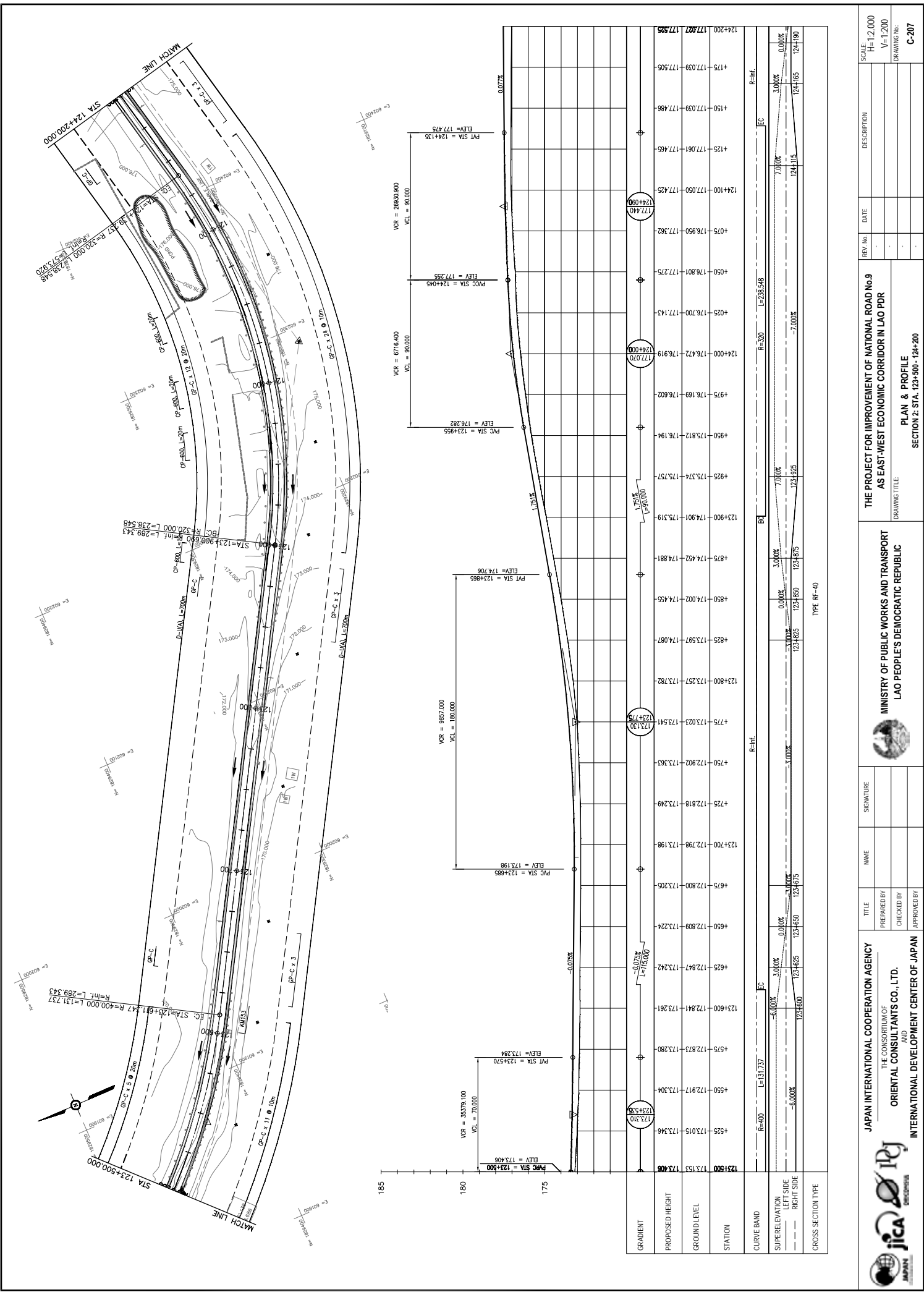
JAPAN INTERNATIONAL COOPERATION AGENCY
 THE CONSORTIUM OF
 ORIENTAL CONSULTANTS CO., LTD.
 INTERNATIONAL DEVELOPMENT CENTER OF JAPAN



REV. No.	DATE	DESCRIPTION	SCALE:
1			H=1:2,000
2			V=1:200

THE PROJECT FOR IMPROVEMENT OF NATIONAL ROAD No.9 AS EAST-WEST ECONOMIC CORRIDOR IN LAO PDR	
MINISTRY OF PUBLIC WORKS AND TRANSPORT LAO PEOPLE'S DEMOCRATIC REPUBLIC	
DRAWING TITLE SECTION 2: STA. 122+800 - 123+500	
PLAN & PROFILE	
DRAWING No. C-206	

JAPAN INTERNATIONAL COOPERATION AGENCY THE CONSORTIUM OF ORIENTAL CONSULTANTS CO., LTD. INTERNATIONAL DEVELOPMENT CENTER OF JAPAN	SIGNATURE NAME TITLE PREPARED BY CHECKED BY APPROVED BY
--	--



JAPAN INTERNATIONAL COOPERATION AGENCY
 THE CONSORTIUM OF
ORIENTAL CONSULTANTS CO., LTD.
 INTERNATIONAL DEVELOPMENT CENTER OF JAPAN

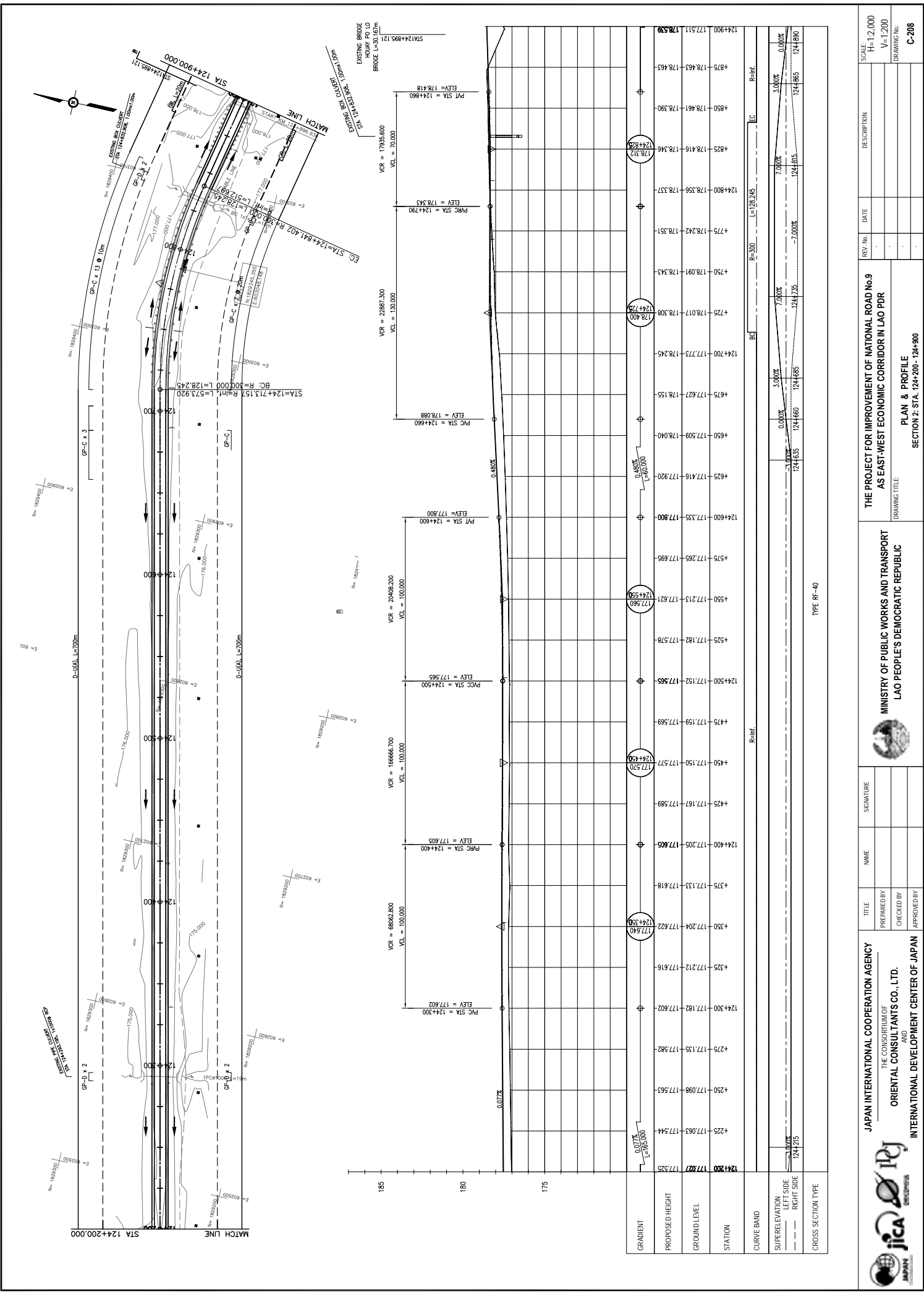
MINISTRY OF PUBLIC WORKS AND TRANSPORT
LAO PEOPLE'S DEMOCRATIC REPUBLIC

THE PROJECT FOR IMPROVEMENT OF NATIONAL ROAD No.9
AS EAST-WEST ECONOMIC CORRIDOR IN LAO PDR

PLAN & PROFILE
 SECTION 2: STA. 123+500 - 124+200

REV. No.	DATE	DESCRIPTION

SCALE: H=1:2,000
 V=1:200
 DRAWING No. C-207

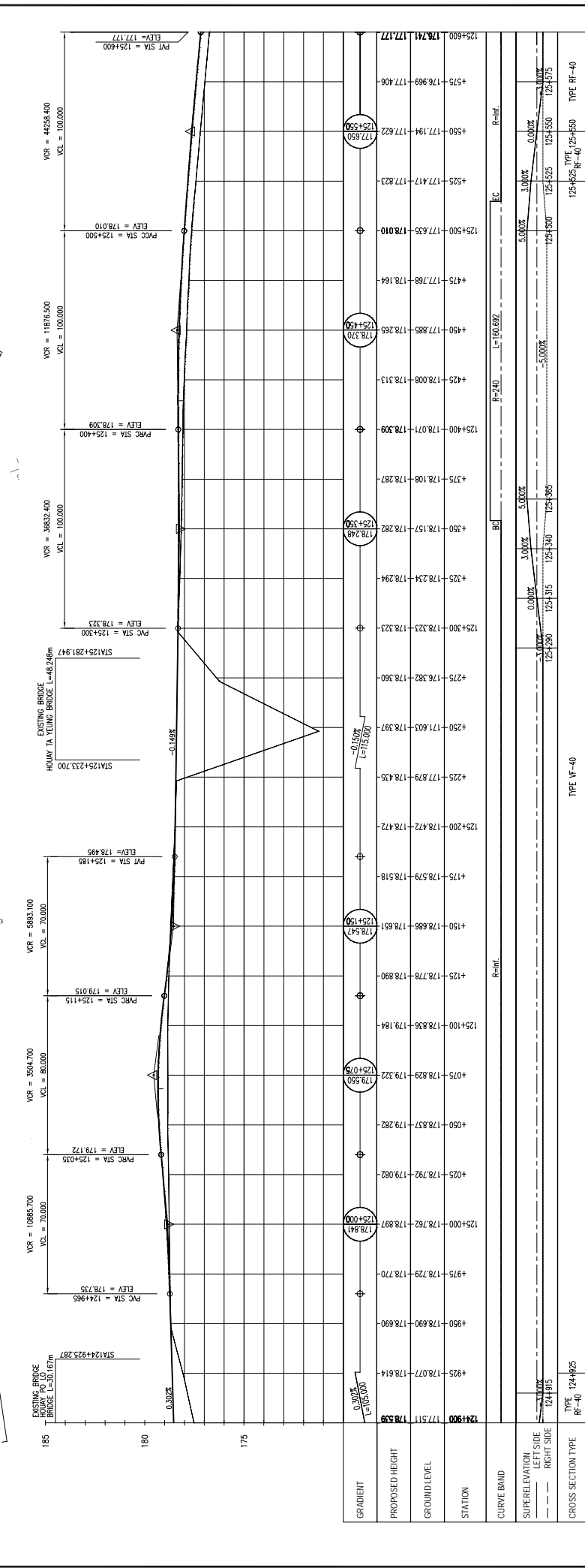
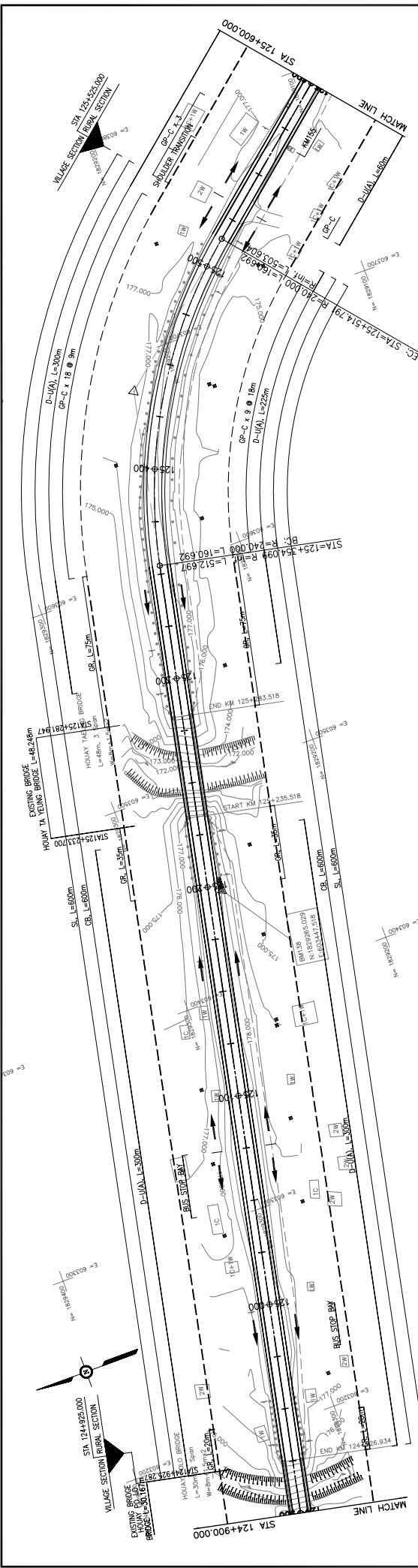


REV No.	DATE	DESCRIPTION	SCALE:
1			H=1:2,000
2			V=1:200
3			DRAWING No.
4			C-208

THE PROJECT FOR IMPROVEMENT OF NATIONAL ROAD No.9 AS EAST-WEST ECONOMIC CORRIDOR IN LAO PDR	
MINISTRY OF PUBLIC WORKS AND TRANSPORT LAO PEOPLE'S DEMOCRATIC REPUBLIC	
DRAWING TITLE PLAN & PROFILE SECTION 2: STA. 124+200 - 124+900	

TITLE	NAME	SIGNATURE
PREPARED BY		
CHECKED BY		
APPROVED BY		

JAPAN INTERNATIONAL COOPERATION AGENCY THE CONSORTIUM OF ORIENTAL CONSULTANTS CO., LTD. INTERNATIONAL DEVELOPMENT CENTER OF JAPAN	
--	--



STATION	PROPOSED HEIGHT	GROUND LEVEL
124+900	177.511	178.539
124+925	178.077	178.614
124+950	178.690	178.690
124+975	178.729	178.770
125+000	178.762	178.897
125+025	178.792	179.082
125+050	178.837	179.282
125+075	178.829	179.322
125+100	178.836	179.184
125+125	178.778	178.890
125+150	178.686	178.651
125+175	178.579	178.518
125+200	178.472	178.472
125+225	177.879	178.435
125+250	171.603	178.397
125+275	176.382	178.360
125+300	178.323	178.323
125+325	178.234	178.294
125+350	178.157	178.282
125+375	178.108	178.287
125+400	178.071	178.309
125+425	178.008	178.313
125+450	177.988	178.265
125+475	177.768	178.164
125+500	177.639	178.010
125+525	177.417	177.823
125+550	177.194	177.622
125+575	176.969	177.408
125+600	176.741	177.177

JAPAN INTERNATIONAL COOPERATION AGENCY
 THE CONSORTIUM OF
ORIENTAL CONSULTANTS CO., LTD.
 INTERNATIONAL DEVELOPMENT CENTER OF JAPAN

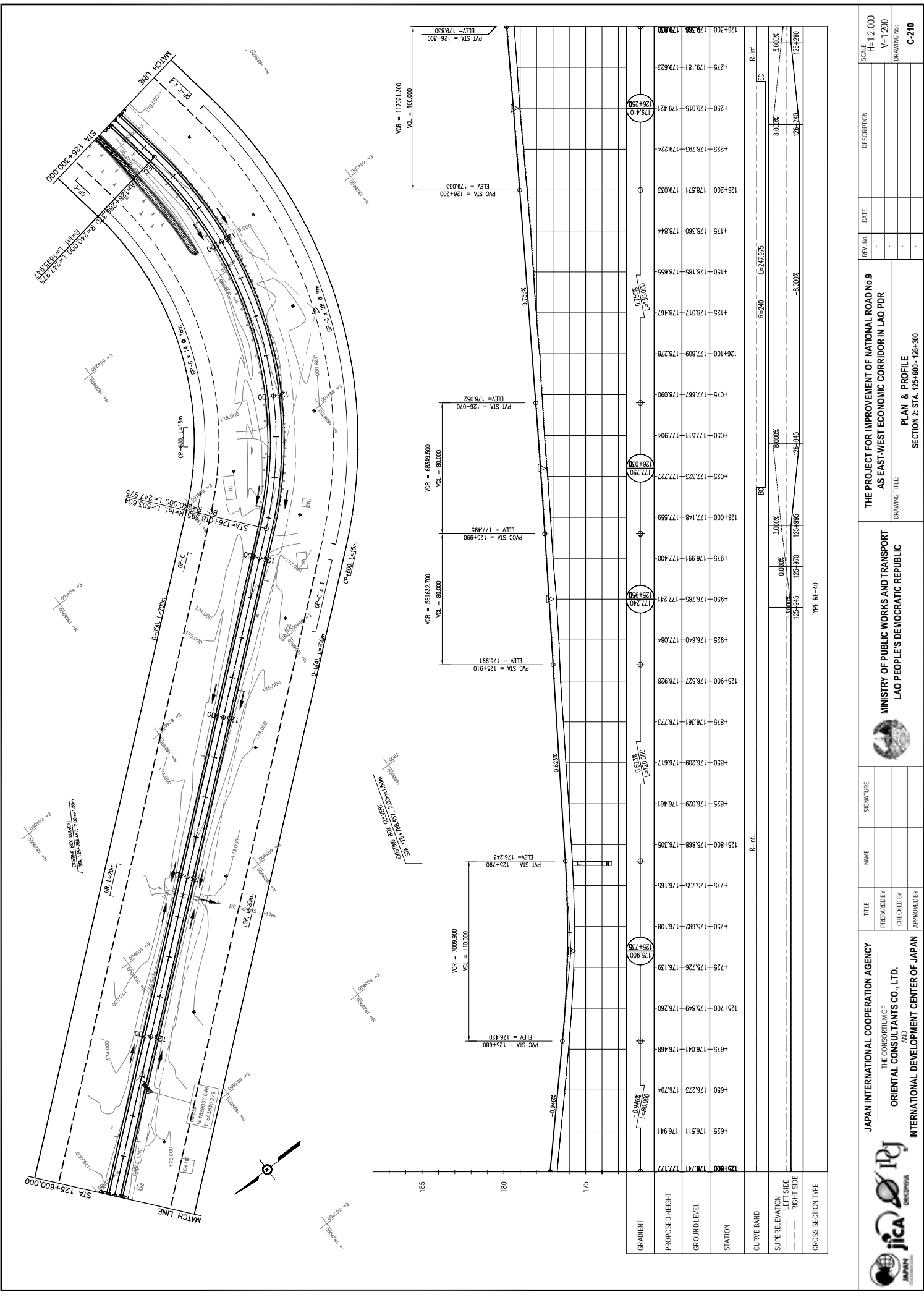
MINISTRY OF PUBLIC WORKS AND TRANSPORT
LAO PEOPLE'S DEMOCRATIC REPUBLIC

THE PROJECT FOR IMPROVEMENT OF NATIONAL ROAD No.9
AS EAST-WEST ECONOMIC CORRIDOR IN LAO PDR

PLAN & PROFILE
 SECTION 2: STA. 124+900 - 125+600

REV. No.	DATE	DESCRIPTION

SCALE: H=1:2,000
 V=1:200
 DRAWING No.: **C-209**



REV. No.	DATE	DESCRIPTION	SCALE:
1			H=1:2,000
2			V=1:200
3			
4			
5			

THE PROJECT FOR IMPROVEMENT OF NATIONAL ROAD No.9 AS EAST-WEST ECONOMIC CORRIDOR IN LAO PDR	
DRAWING TITLE: PLAN & PROFILE SECTION 2: STA. 125+600 - 126+300	
DRAWING No.: C-210	

	MINISTRY OF PUBLIC WORKS AND TRANSPORT LAO PEOPLE'S DEMOCRATIC REPUBLIC	
	NAME	SIGNATURE
	TITLE	

	JAPAN INTERNATIONAL COOPERATION AGENCY THE CONSORTIUM OF ORIENTAL CONSULTANTS CO., LTD. INTERNATIONAL DEVELOPMENT CENTER OF JAPAN	
	PREPARED BY	CHECKED BY
	APPROVED BY	