

GRADIENT	PROPOSED HEIGHT	GROUND LEVEL	STATION	CURVE BAND	SUPERELEVATION LEFT SIDE	SUPERELEVATION RIGHT SIDE	CROSS SECTION TYPE
	153.083	153.193	39+500	R=700 L=342.381	3.00%	3.00%	TYPE VI-7
	153.134	153.227	39+575		0.00%	3.00%	
	153.143	153.232	4+50			3.00%	
	153.167	153.221	4+25			3.00%	
	153.133	153.172	4+25			3.00%	
	153.030	153.122	4+50			3.00%	
	152.919	153.082	4+75			3.00%	
	152.807	152.994	39+700			3.00%	
	152.695	152.920	4+25			3.00%	
	152.584	152.841	4+50			3.00%	
	152.473	152.752	4+75			3.00%	
	152.360	152.655	39+800			3.00%	
	152.249	152.549	4+25			3.00%	
	152.137	152.438	4+50			3.00%	
	152.025	152.327	4+75			3.00%	
	151.913	152.216	39+900			3.00%	
	151.801	152.106	4+25			3.00%	
	151.689	151.995	4+50			3.00%	
	151.575	151.884	4+75			3.00%	
	151.463	151.774	40+000			3.00%	
	151.353	151.663	4+25			3.00%	
	151.243	151.552	4+050			3.00%	
	151.128	151.472	4+075			3.00%	
	151.107	151.452	40+100			3.00%	
	151.161	151.493	4+25			3.00%	
	151.217	151.595	4+50			3.00%	
	151.422	151.758	4+75			3.00%	
	151.981	151.981	40+200			3.00%	

JAPAN INTERNATIONAL COOPERATION AGENCY
 THE CONSORTIUM OF
ORIENTAL CONSULTANTS CO., LTD.
 INTERNATIONAL DEVELOPMENT CENTER OF JAPAN

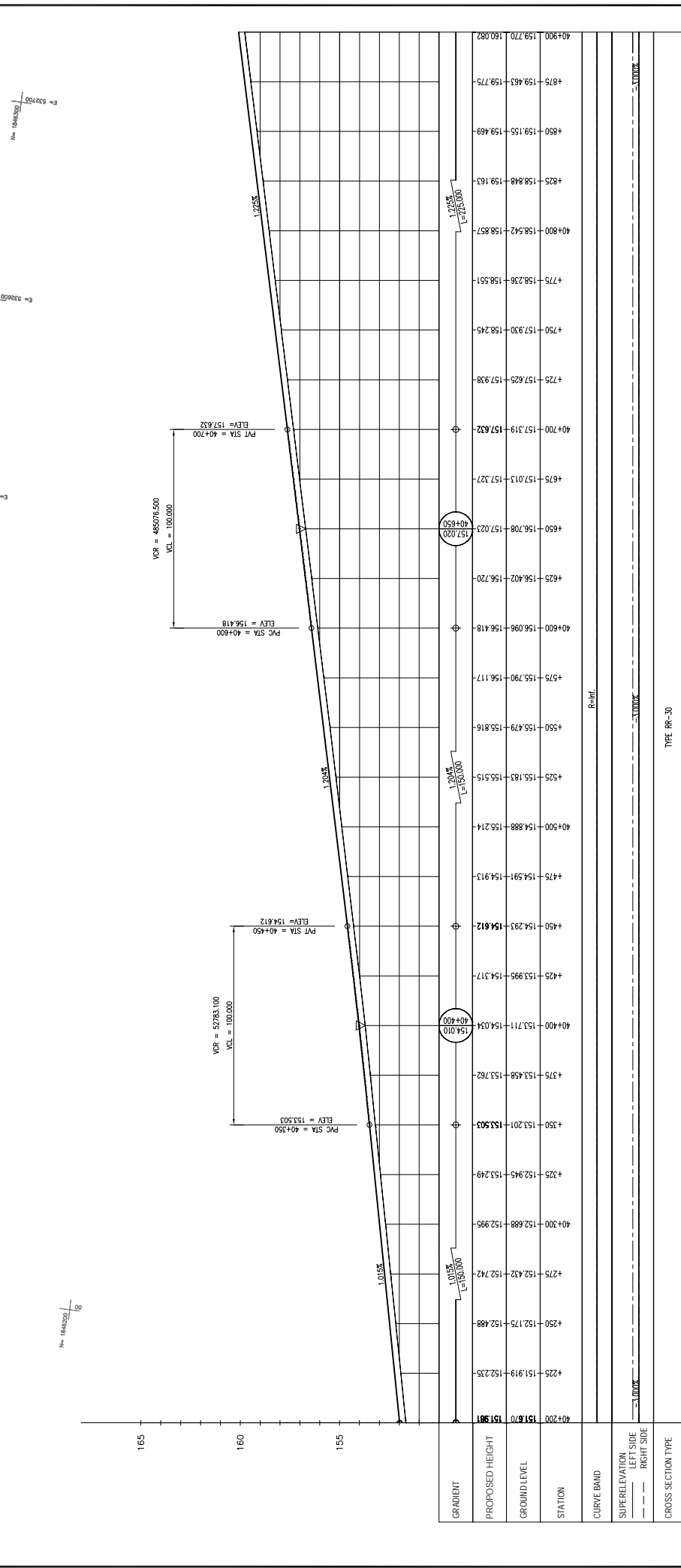
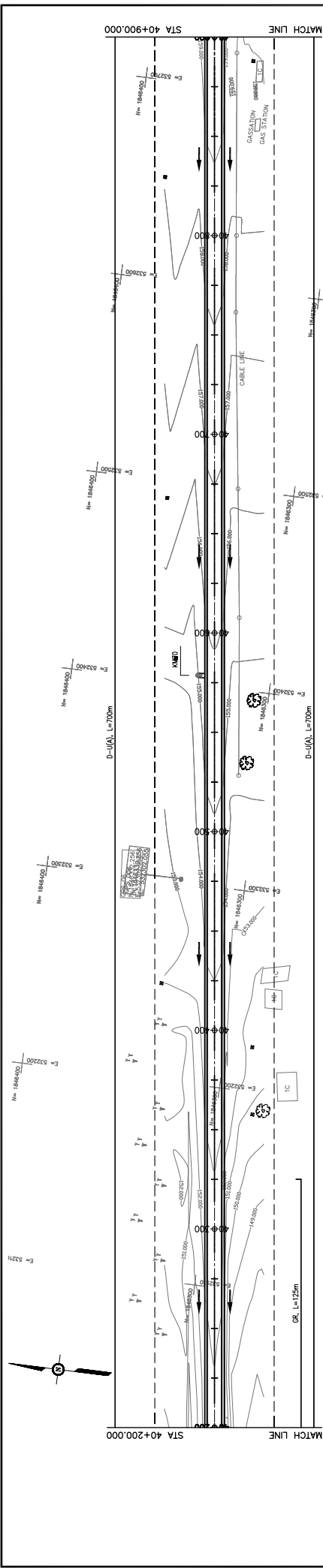
MINISTRY OF PUBLIC WORKS AND TRANSPORT
LAO PEOPLE'S DEMOCRATIC REPUBLIC

THE PROJECT FOR IMPROVEMENT OF NATIONAL ROAD No.9
AS EAST-WEST ECONOMIC CORRIDOR IN LAO PDR

PLAN & PROFILE
SECTION 1: STA 39+500 - 40+200

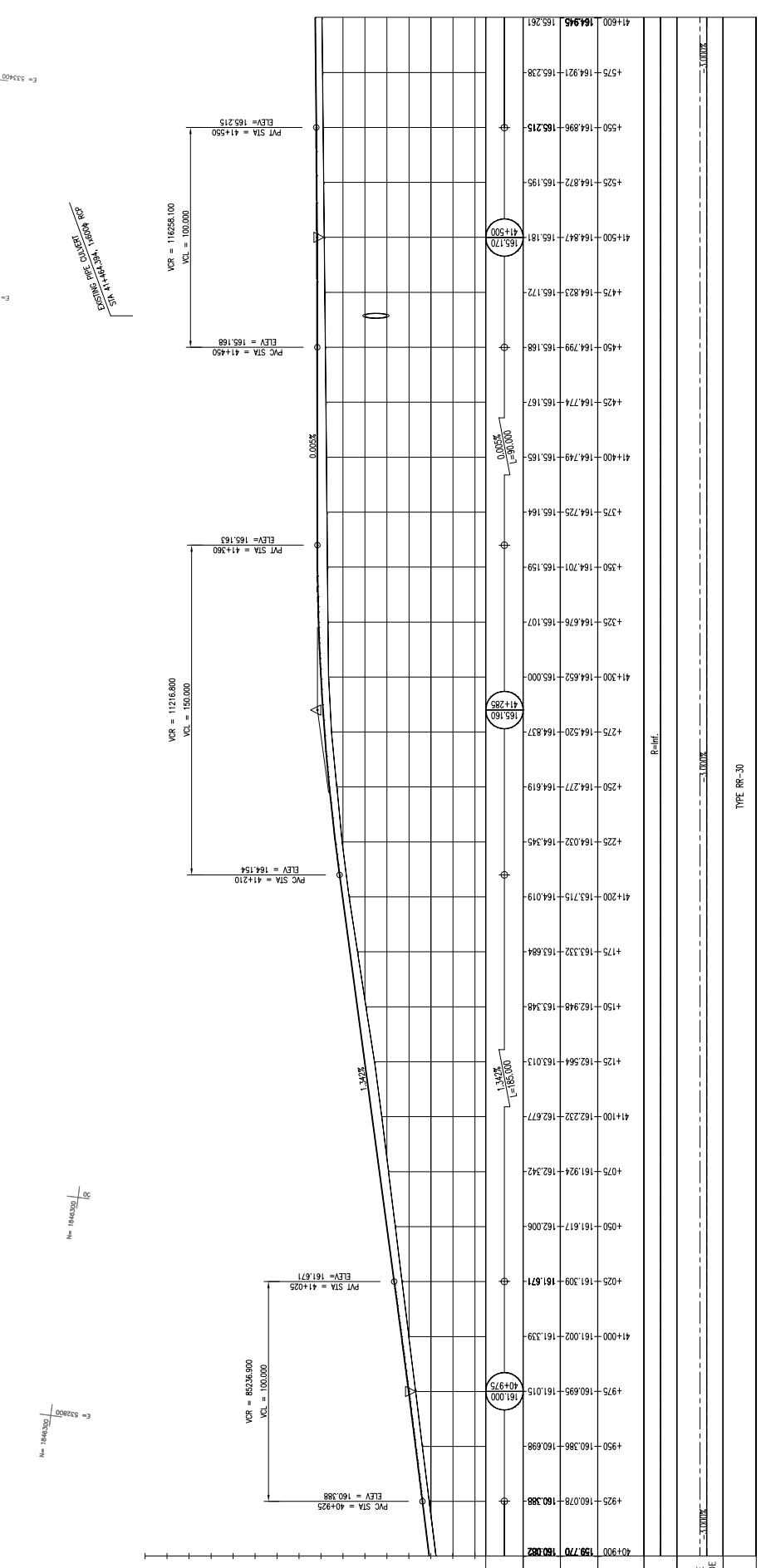
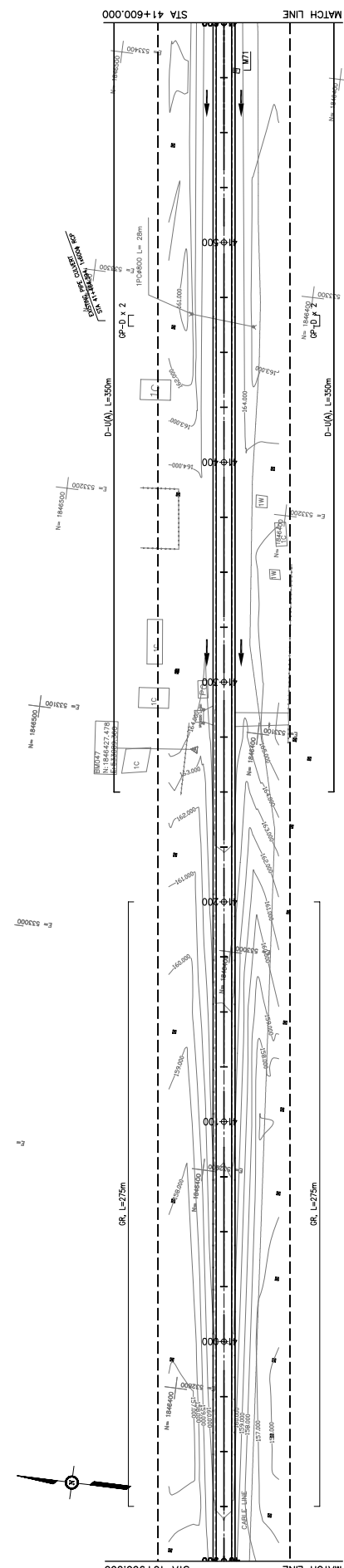
REV. No.	DATE	DESCRIPTION

SCALE: H=1:2,000
 V=1:200
 DRAWING No.: **C-117**



GRADIENT	1.200%	1.225%
PROPOSED HEIGHT	157.610	151.901
GROUND LEVEL	157.610	151.901
STATION	40+200	40+900
CURVE BAND	Re-inf.	
SUPERELEVATION	Re-inf.	
CROSS SECTION TYPE	TYPE RR-30	

		JAPAN INTERNATIONAL COOPERATION AGENCY THE CONSORTIUM OF ORIENTAL CONSULTANTS CO., LTD. INTERNATIONAL DEVELOPMENT CENTER OF JAPAN		MINISTRY OF PUBLIC WORKS AND TRANSPORT LAO PEOPLE'S DEMOCRATIC REPUBLIC		THE PROJECT FOR IMPROVEMENT OF NATIONAL ROAD No.9 AS EAST-WEST ECONOMIC CORRIDOR IN LAO PDR		REV. No. . DATE .	DESCRIPTION . DRAWING No. .	SCALE: H=1:2,000 V=1:200 DRAWING No. C-118	
TITLE		NAME		SIGNATURE		DRAWING TITLE		SECTION 1: STA 40+200 - 40+900		PLAN & PROFILE	
PREPARED BY		CHECKED BY		APPROVED BY		DRAWING TITLE		SECTION 1: STA 40+200 - 40+900		PLAN & PROFILE	



STATION	PROPOSED HEIGHT	GROUND LEVEL	GRADIENT
41+900	159.70	160.88	
41+850			
41+800			
41+750			
41+700			
41+650			
41+600			
41+550			
41+500			
41+450			
41+400			
41+350			
41+300			
41+250			
41+200			
41+150			
41+100			
41+050			
41+000			
40+950			
40+900			

PLAN & PROFILE
SECTION 1: STA 40+900 - 41+600

TYPE RR-30

SCALE: H=1:2,000
V=1:200

DRAWING NO. C-119

DRAUGHTING TITLE: THE PROJECT FOR IMPROVEMENT OF NATIONAL ROAD No.9 AS EAST-WEST ECONOMIC CORRIDOR IN LAO PDR

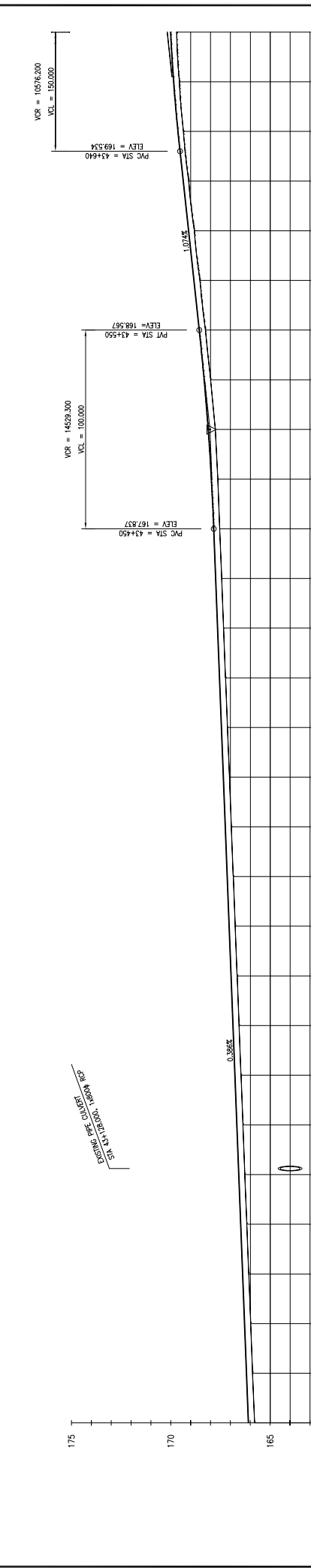
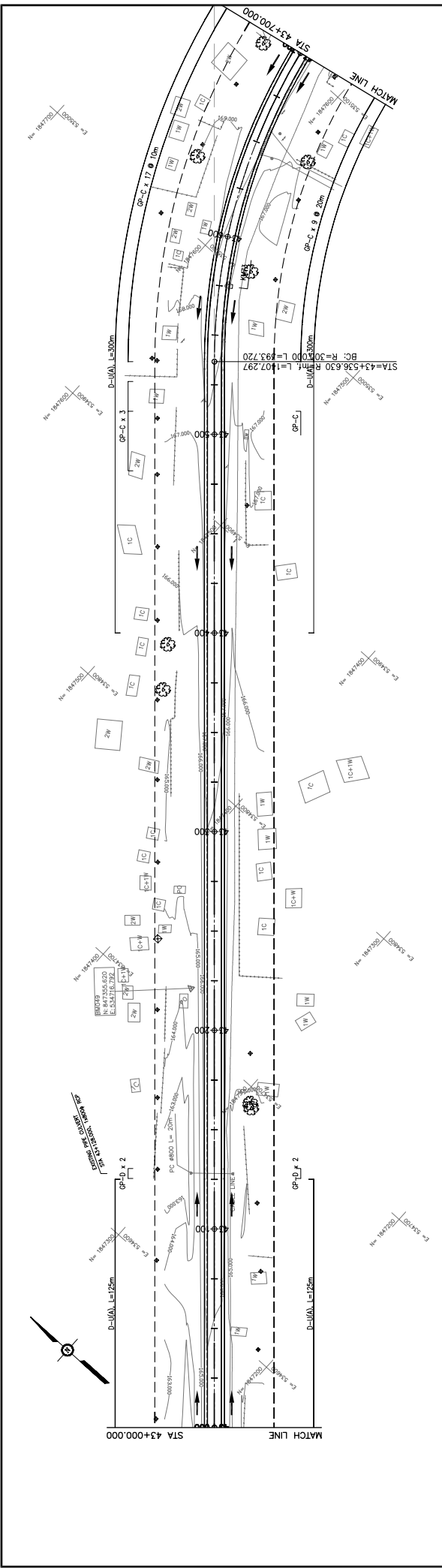
DRAWING TITLE: MINISTRY OF PUBLIC WORKS AND TRANSPORT
LAO PEOPLE'S DEMOCRATIC REPUBLIC

JAPAN INTERNATIONAL COOPERATION AGENCY
THE CONSORTIUM OF
ORIENTAL CONSULTANTS CO., LTD.
INTERNATIONAL DEVELOPMENT CENTER OF JAPAN

iJICA JAPAN ORIENTAL CONSULTANTS CO., LTD.

REV. No.	DATE	DESCRIPTION

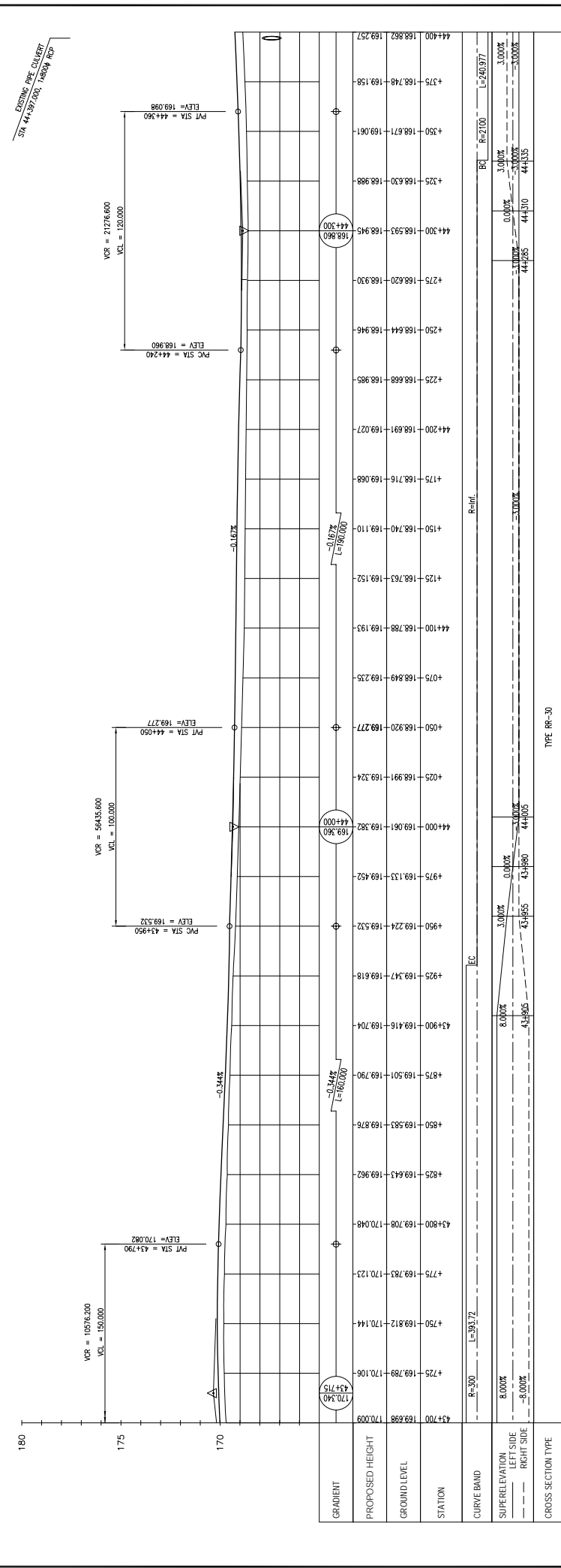
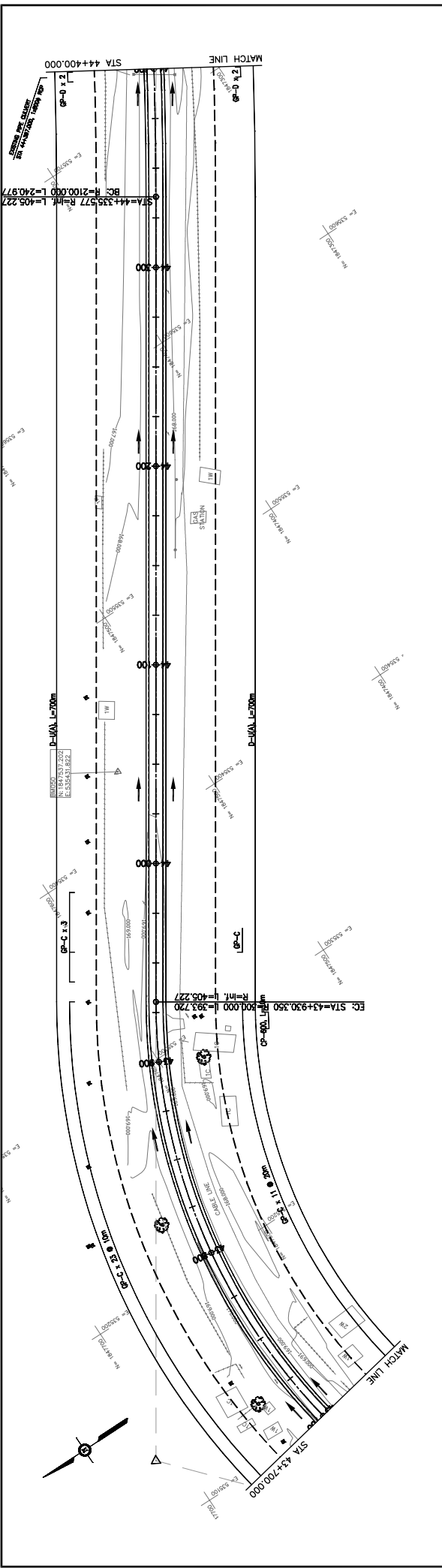
TITLE	NAME	SIGNATURE
PREPARED BY		
CHECKED BY		
APPROVED BY		



STATION	PROPOSED HEIGHT	GROUND LEVEL
43+1000	165.785	166.099
43+1025	166.076	166.389
43+1050	166.173	166.485
43+1075	166.271	166.582
43+1100	166.368	166.678
43+1125	166.465	166.775
43+1150	166.562	166.872
43+1175	166.659	166.968
43+1200	166.757	167.065
43+1225	166.854	167.161
43+1250	166.951	167.258
43+1275	167.048	167.354
43+1300	167.145	167.451
43+1325	167.243	167.547
43+1350	167.340	167.644
43+1375	167.437	167.740
43+1400	167.534	167.837
43+1425	167.631	167.935
43+1450	167.728	168.032
43+1475	167.825	168.129
43+1500	167.922	168.226
43+1525	168.019	168.323
43+1550	168.116	168.420
43+1575	168.213	168.517
43+1600	168.310	168.614
43+1625	168.407	168.711
43+1650	168.504	168.808
43+1675	168.601	168.905
43+1700	168.698	169.002
43+1725	168.795	169.099
43+1750	168.892	169.196
43+1775	168.989	169.293
43+1800	169.086	169.390
43+1825	169.183	169.487
43+1850	169.280	169.584
43+1875	169.377	169.681
43+1900	169.474	169.778
43+1925	169.571	169.875
43+1950	169.668	169.972
43+1975	169.765	170.069
43+2000	169.862	170.166

TYPE RR-30

JAPAN INTERNATIONAL COOPERATION AGENCY THE CONSORTIUM OF ORIENTAL CONSULTANTS CO., LTD. INTERNATIONAL DEVELOPMENT CENTER OF JAPAN		THE PROJECT FOR IMPROVEMENT OF NATIONAL ROAD No.9 AS EAST-WEST ECONOMIC CORRIDOR IN LAO PDR DRAWING TITLE PLAN & PROFILE SECTION 1: STA 43+000 - 43+700	
MINISTRY OF PUBLIC WORKS AND TRANSPORT LAO PEOPLE'S DEMOCRATIC REPUBLIC		REV. No. DATE	DESCRIPTION
SCALE: H=1:2,000 V=1:200 DRAWING No. C-122	STA 43+000.000 STA 43+700.000		



REV No.	DATE	DESCRIPTION

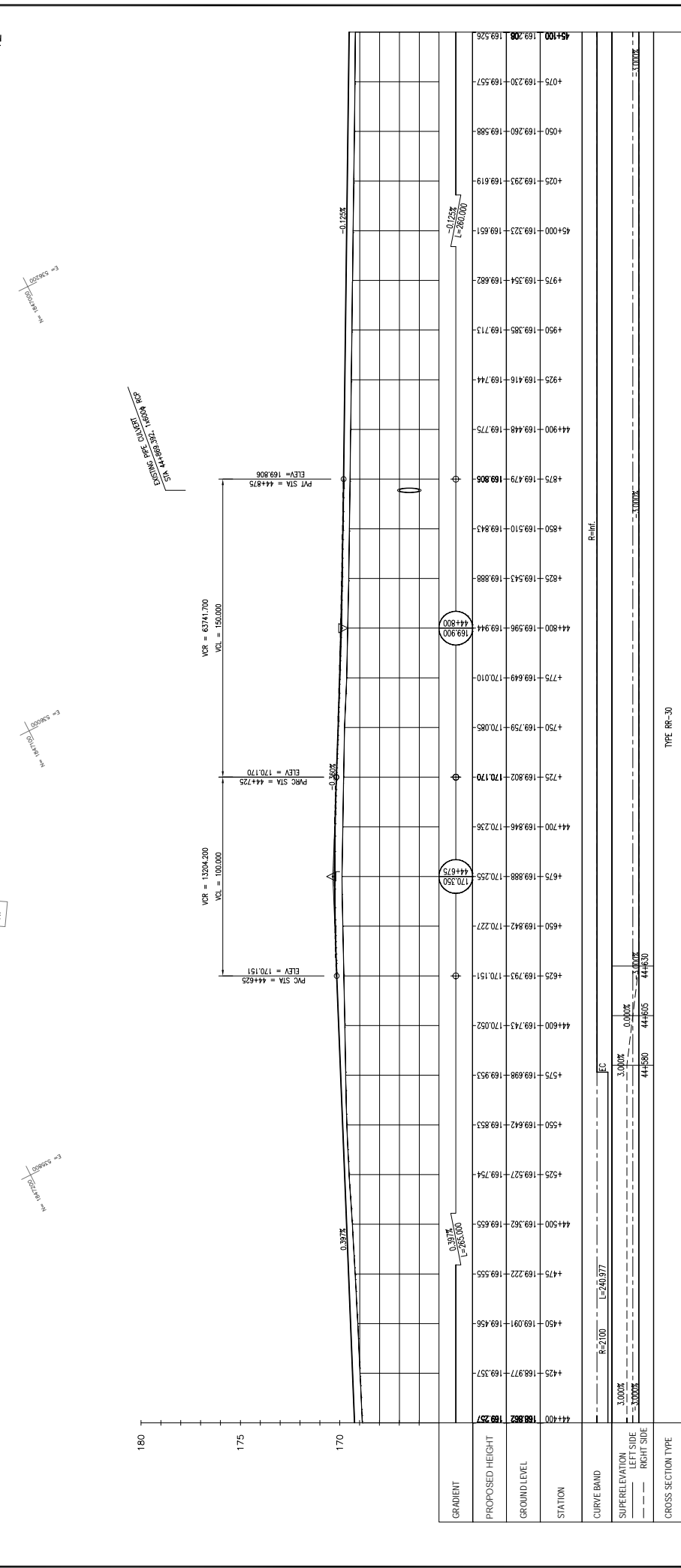
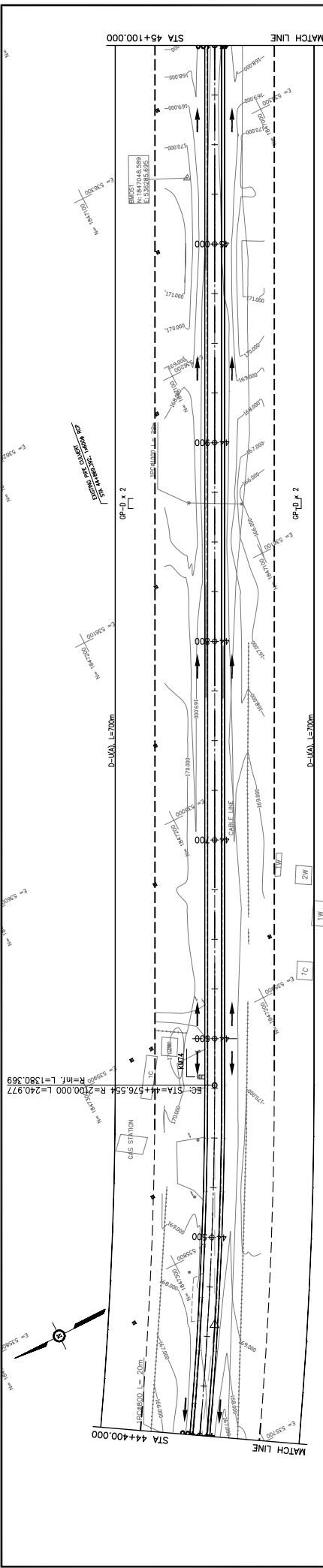
JAPAN INTERNATIONAL COOPERATION AGENCY
 THE CONSORTIUM OF
ORIENTAL CONSULTANTS CO., LTD.
INTERNATIONAL DEVELOPMENT CENTER OF JAPAN

MINISTRY OF PUBLIC WORKS AND TRANSPORT
LAO PEOPLE'S DEMOCRATIC REPUBLIC

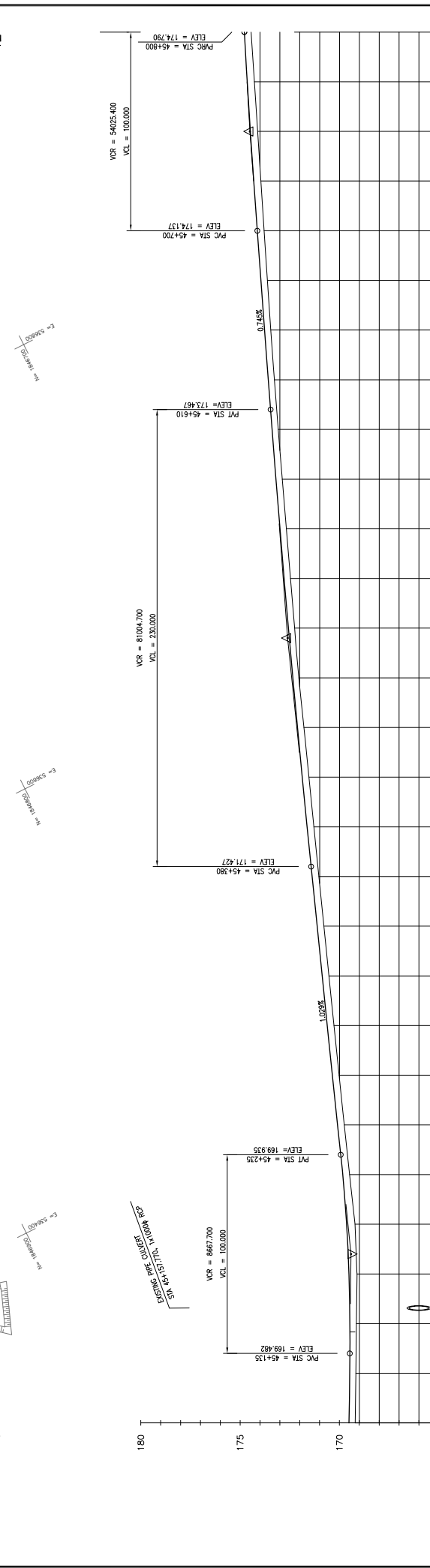
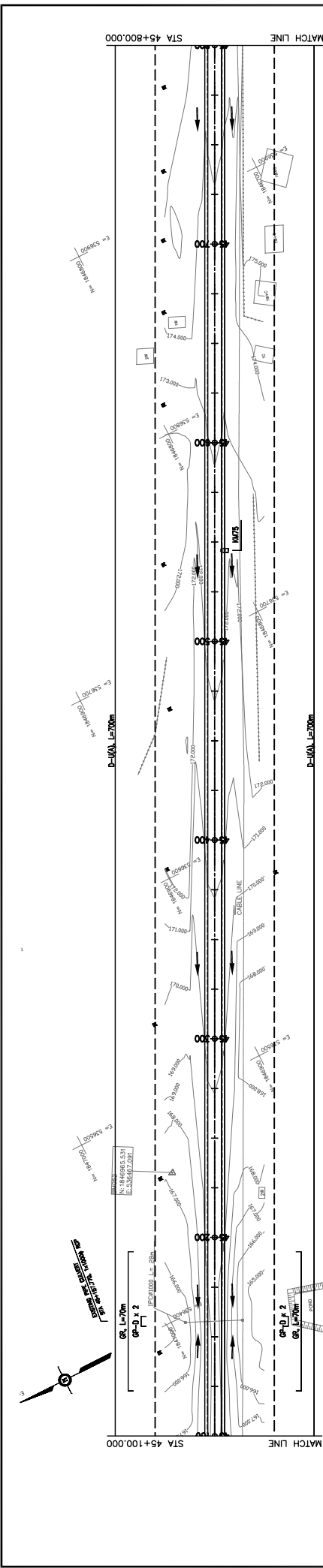
THE PROJECT FOR IMPROVEMENT OF NATIONAL ROAD No.9
AS EAST-WEST ECONOMIC CORRIDOR IN LAO PDR

PLAN & PROFILE
SECTION 1: STA 43+700 - 44+400

SCALE: H=1:2,000
 V=1:200
 DRAWING NO.: C-123



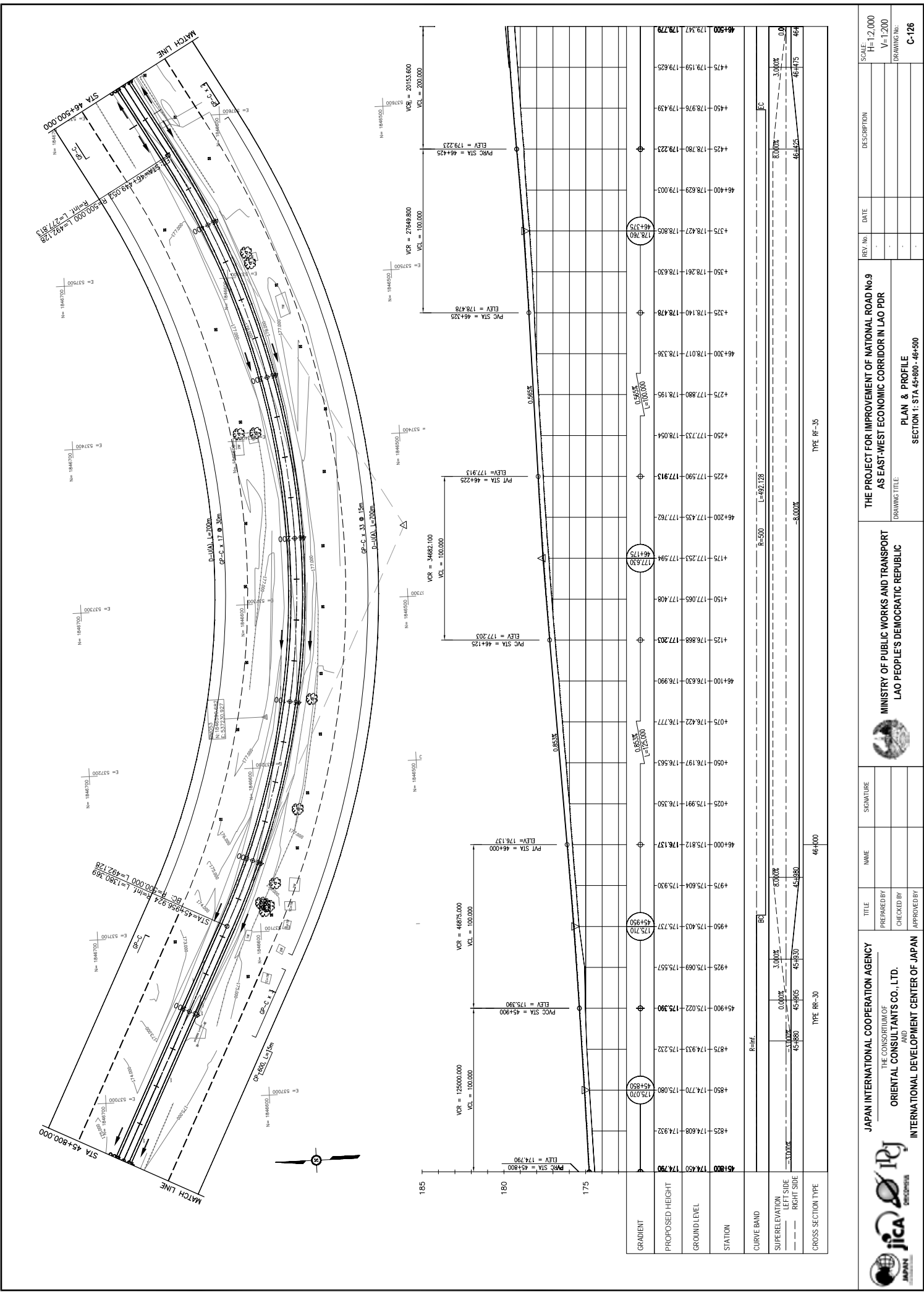
STATION	PROPOSED HEIGHT	GROUND LEVEL	GRADIENT
44+700	169.882	169.257	0.391%
44+750	169.842	169.227	0.391%
44+800	169.802	170.255	0.391%
44+850	169.762	170.285	0.391%
44+900	169.722	170.315	0.391%
44+950	169.682	170.345	0.391%
45+000	169.642	170.375	0.391%
45+050	169.602	170.405	0.391%
45+100	169.562	170.435	0.391%
45+150	169.522	170.465	0.391%
45+200	169.482	170.495	0.391%
45+250	169.442	170.525	0.391%
45+300	169.402	170.555	0.391%
45+350	169.362	170.585	0.391%
45+400	169.322	170.615	0.391%
45+450	169.282	170.645	0.391%
45+500	169.242	170.675	0.391%
45+550	169.202	170.705	0.391%
45+600	169.162	170.735	0.391%
45+650	169.122	170.765	0.391%
45+700	169.082	170.795	0.391%
45+750	169.042	170.825	0.391%
45+800	169.002	170.855	0.391%
45+850	168.962	170.885	0.391%
45+900	168.922	170.915	0.391%
45+950	168.882	170.945	0.391%
46+000	168.842	170.975	0.391%
46+050	168.802	171.005	0.391%
46+100	168.762	171.035	0.391%
46+150	168.722	171.065	0.391%
46+200	168.682	171.095	0.391%
46+250	168.642	171.125	0.391%
46+300	168.602	171.155	0.391%
46+350	168.562	171.185	0.391%
46+400	168.522	171.215	0.391%
46+450	168.482	171.245	0.391%
46+500	168.442	171.275	0.391%
46+550	168.402	171.305	0.391%
46+600	168.362	171.335	0.391%
46+650	168.322	171.365	0.391%
46+700	168.282	171.395	0.391%
46+750	168.242	171.425	0.391%
46+800	168.202	171.455	0.391%
46+850	168.162	171.485	0.391%
46+900	168.122	171.515	0.391%
46+950	168.082	171.545	0.391%
47+000	168.042	171.575	0.391%
47+050	168.002	171.605	0.391%
47+100	167.962	171.635	0.391%
47+150	167.922	171.665	0.391%
47+200	167.882	171.695	0.391%
47+250	167.842	171.725	0.391%
47+300	167.802	171.755	0.391%
47+350	167.762	171.785	0.391%
47+400	167.722	171.815	0.391%
47+450	167.682	171.845	0.391%
47+500	167.642	171.875	0.391%
47+550	167.602	171.905	0.391%
47+600	167.562	171.935	0.391%
47+650	167.522	171.965	0.391%
47+700	167.482	171.995	0.391%
47+750	167.442	172.025	0.391%
47+800	167.402	172.055	0.391%
47+850	167.362	172.085	0.391%
47+900	167.322	172.115	0.391%
47+950	167.282	172.145	0.391%
48+000	167.242	172.175	0.391%
48+050	167.202	172.205	0.391%
48+100	167.162	172.235	0.391%
48+150	167.122	172.265	0.391%
48+200	167.082	172.295	0.391%
48+250	167.042	172.325	0.391%
48+300	167.002	172.355	0.391%
48+350	166.962	172.385	0.391%
48+400	166.922	172.415	0.391%
48+450	166.882	172.445	0.391%
48+500	166.842	172.475	0.391%
48+550	166.802	172.505	0.391%
48+600	166.762	172.535	0.391%
48+650	166.722	172.565	0.391%
48+700	166.682	172.595	0.391%
48+750	166.642	172.625	0.391%
48+800	166.602	172.655	0.391%
48+850	166.562	172.685	0.391%
48+900	166.522	172.715	0.391%
48+950	166.482	172.745	0.391%
49+000	166.442	172.775	0.391%
49+050	166.402	172.805	0.391%
49+100	166.362	172.835	0.391%
49+150	166.322	172.865	0.391%
49+200	166.282	172.895	0.391%
49+250	166.242	172.925	0.391%
49+300	166.202	172.955	0.391%
49+350	166.162	172.985	0.391%
49+400	166.122	173.015	0.391%
49+450	166.082	173.045	0.391%
49+500	166.042	173.075	0.391%
49+550	166.002	173.105	0.391%
49+600	165.962	173.135	0.391%
49+650	165.922	173.165	0.391%
49+700	165.882	173.195	0.391%
49+750	165.842	173.225	0.391%
49+800	165.802	173.255	0.391%
49+850	165.762	173.285	0.391%
49+900	165.722	173.315	0.391%
49+950	165.682	173.345	0.391%
50+000	165.642	173.375	0.391%
50+050	165.602	173.405	0.391%
50+100	165.562	173.435	0.391%
50+150	165.522	173.465	0.391%
50+200	165.482	173.495	0.391%
50+250	165.442	173.525	0.391%
50+300	165.402	173.555	0.391%
50+350	165.362	173.585	0.391%
50+400	165.322	173.615	0.391%
50+450	165.282	173.645	0.391%
50+500	165.242	173.675	0.391%
50+550	165.202	173.705	0.391%
50+600	165.162	173.735	0.391%
50+650	165.122	173.765	0.391%
50+700	165.082	173.795	0.391%
50+750	165.042	173.825	0.391%
50+800	165.002	173.855	0.391%
50+850	164.962	173.885	0.391%
50+900	164.922	173.915	0.391%
50+950	164.882	173.945	0.391%
51+000	164.842	173.975	0.391%
51+050	164.802	174.005	0.391%
51+100	164.762	174.035	0.391%
51+150	164.722	174.065	0.391%
51+200	164.682	174.095	0.391%
51+250	164.642	174.125	0.391%
51+300	164.602	174.155	0.391%
51+350	164.562	174.185	0.391%
51+400	164.522	174.215	0.391%
51+450	164.482	174.245	0.391%
51+500	164.442	174.275	0.391%
51+550	164.402	174.305	0.391%
51+600	164.362	174.335	0.391%
51+650	164.322	174.365	0.391%
51+700	164.282	174.395	0.391%
51+750	164.242	174.425	0.391%
51+800	164.202	174.455	0.391%
51+850	164.162	174.485	0.391%
51+900	164.122	174.515	0.391%
51+950	164.082	174.545	0.391%
52+000	164.042	174.575	0.391%
52+050	164.002	174.605	0.391%
52+100	163.962	174.635	0.391%
52+150	163.922	174.665	0.391%
52+200	163.882	174.695	0.391%
52+250	163.842	174.725	0.391%
52+300	163.802	174.755	0.391%
52+350	163.762	174.785	0.391%
52+400	163.722	174.815	0.391%
52+450	163.682	174.845	0.391%
52+500	163.642	174.875	0.391%
52+550	163.602	174.905	0.391%
52+600	163.562	174.935	0.391%
52+650	163.522	174.965	0.391%
52+700	163.482	174.995	0.391%
52+750	163.442	175.025	0.391%
52+800	163.402	175.055	0.391%
52+850	163.362	175.085	0.391%
52+900	163.322	175.115	0.391%
52+950	163.282	175.145	0.391%
53+000	163.242	175.175	0.391%
53+050	163.202	175.205	0.391%
53+100	163.162	175.235	0.391%
53+150	163.122	175.265	0.391%
53+200	163.082	175.295	0.391%
53+250	163.042	175.325	0.391%
53+300	163.002	175.355	0.391%
53+350	162.962	175.385	0.391%
53+400	162.922	175.415	0.391%
53+450	162.882	175.445	0.391%
53+500	162.842	175.475	0.391%
53+550	162.802	175.505	0.391%
53+600	162.762	175.535	0.391%
53+650	162.722	175.565	0.391%
53+700	162.682	175.595	0.391%
53+750	162.642	175.625	0.391%
53+800	162.602	175.655	0.391%
53+850	162.562	175.685	0.391%
53+900	162.522	175.715	0.391%
53+950	162.482	175.745	0.391%
54+000	162.442	175.775	0.391%
54+050	162.402	175.805	0.391%
54+100	162.362	175.835	0.391%
54+150	162.322	175.865	0.391%
54+200	162.282	175.895	0.391%
54+250	162.242	175.925	0.391%
54+300	162.202	175.955	0.391%
54+350	162.162	175.985	0.391%
54+400	162.122	176.015	0.391%
54+450	162.082	176.045	0.391%
54+500	162.042	176.075	0.391%
54+550	162.002	176.105	0.391%
54+600	161.962	176.135	0.391%
54+650	161.922	176.165	0.391%
54+700	161.882	176.195	0.391%
54+750	161.842	176.225	0.391%
54+800	161.802	176.255	0.391%
54+850	161.762	176.285	0.391%
54+900	161.722	176.315	0.391%
54+950	161.682	176.345	0.391%
55+000	161.642	176.375	0.391%
55+050	161.602	176.405	0.391%
55+100	161.562	176.435	0.391%
55+150	161.522	176.465	0.391%
55+200	161.482	176.495	0.391%
55+250	161.442	176.525	0.391%
55+300	161.402	176.555	0.391%
55+350	161.362	176.585	0.391%
55+400	161.322	176.615	0.391%
55+450	161.282	176.645	0.391%
55+500	161.242	176.675	0.391%
55+550	161.202	176.705	0.391%
55+600	161.162	176.735	0.391%
55+650	161.122	176.765	0.391%
55+700	161.082	176.795	0.391%
55+750	161.042	176.825	0.391%
55+800	161.002	176.855	0.391%
55+850	160.962	176.885	0.391%
55+900	160.922	176.915	0.391%
55+950	160.882	176.945	0.391%
56+000	160.842	176.975	0.391%
56+050	160.802	177.005	0.391%
56+100	160.762	177.035	0.391%
56+150	160.722	177.065	0.391%
56+200	160.682	177.095	0.391%
56+250	160.642	177.125	0.391%
56+300	160.602	177.155	0.391%
56+350	160.562	177.185	0.391%
56+400	160.522	177.215	0.391%
56+450	160.482	177.245	0.391%
56+500	160.442	177.275	0.391%
56+550</			



GRADIENT	PROPOSED HEIGHT	GROUND LEVEL	STATION	CURVE BAND	SUPERELEVATION LEFT SIDE RIGHT SIDE	CROSS SECTION TYPE
	169.420	169.208	45+100			
	169.493	169.495	45+200			
	169.221	169.645	45+300			
	169.119	169.525	45+400			
	169.148	169.477	45+500			
	169.178	169.495	45+600			
	169.182	169.495	45+700			
	169.148	174.318	45+800			

TYPE RR-30

		JAPAN INTERNATIONAL COOPERATION AGENCY THE CONSORTIUM OF ORIENTAL CONSULTANTS CO., LTD. INTERNATIONAL DEVELOPMENT CENTER OF JAPAN		MINISTRY OF PUBLIC WORKS AND TRANSPORT LAO PEOPLE'S DEMOCRATIC REPUBLIC		THE PROJECT FOR IMPROVEMENT OF NATIONAL ROAD No.9 AS EAST-WEST ECONOMIC CORRIDOR IN LAO PDR		REV No. : DATE :	DESCRIPTION : DATE :	SCALE : H=1:2,000 V=1:200
TITLE : PREPARED BY : CHECKED BY : APPROVED BY :		NAME : SIGNATURE :		DRAWING TITLE : PLAN & PROFILE SECTION 1: STA 45+100 - 45+800		DRAWING No. : C-125				



STATION	PROPOSED HEIGHT	GROUND LEVEL	GRADIENT
45+800	174.50	174.70	175.070
45+825	174.808	174.930	45+850
45+850	174.770	175.080	45+875
45+875	174.933	175.232	45+900
45+900	175.022	175.390	45+925
45+925	175.069	175.557	45+950
45+950	175.403	175.737	45+975
45+975	175.804	175.930	46+000
46+000	175.812	176.137	46+025
46+025	175.991	176.550	46+050
46+050	176.197	176.583	46+075
46+075	176.422	176.777	46+100
46+100	176.630	176.990	46+125
46+125	176.868	177.203	46+150
46+150	177.065	177.408	46+175
46+175	177.253	177.594	46+200
46+200	177.435	177.762	46+225
46+225	177.590	177.913	46+250
46+250	177.733	178.054	46+275
46+275	177.880	178.195	46+300
46+300	178.017	178.336	46+325
46+325	178.140	178.478	46+350
46+350	178.261	178.630	46+375
46+375	178.427	178.803	46+400
46+400	178.629	179.003	46+425
46+425	178.780	179.223	46+450
46+450	178.976	179.439	46+475
46+475	179.159	179.625	46+500
46+500	179.347	179.779	

JAPAN INTERNATIONAL COOPERATION AGENCY
 THE CONSORTIUM OF
ORIENTAL CONSULTANTS CO., LTD.
 INTERNATIONAL DEVELOPMENT CENTER OF JAPAN

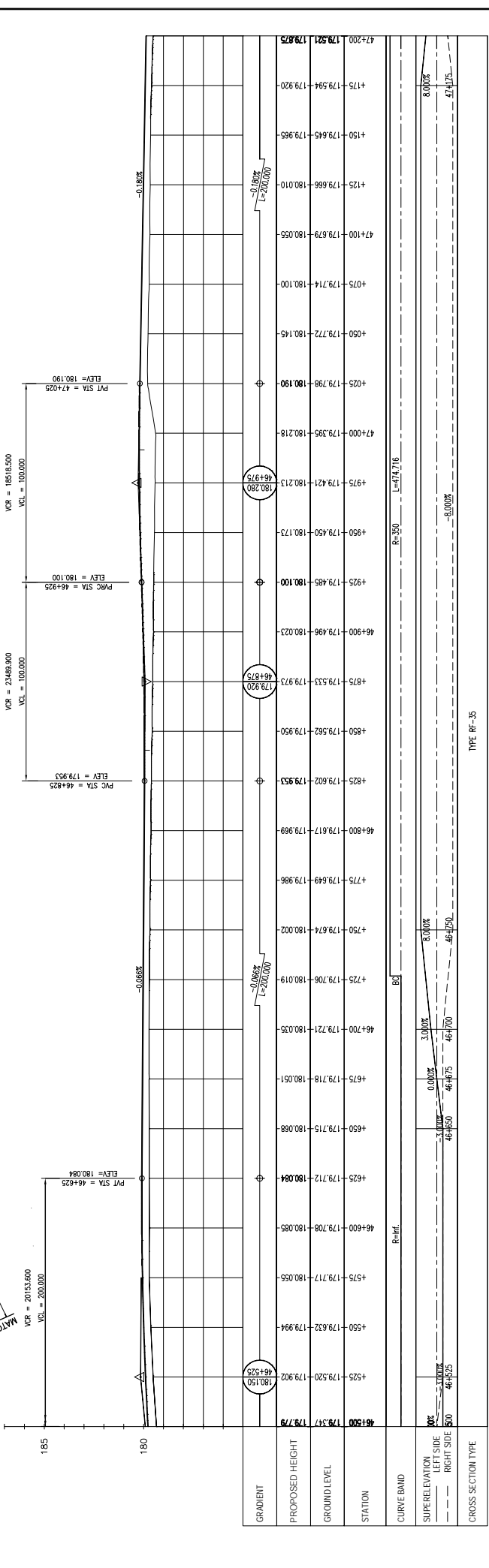
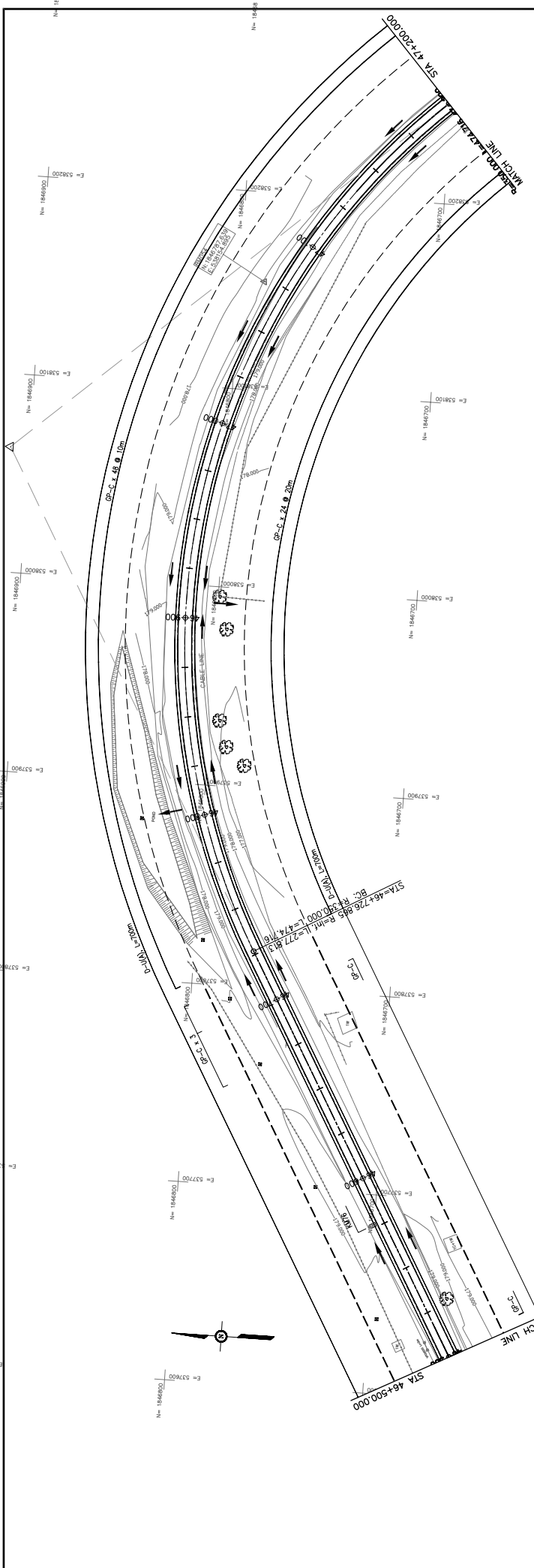
MINISTRY OF PUBLIC WORKS AND TRANSPORT
LAO PEOPLE'S DEMOCRATIC REPUBLIC

THE PROJECT FOR IMPROVEMENT OF NATIONAL ROAD No.9
AS EAST-WEST ECONOMIC CORRIDOR IN LAO PDR

PLAN & PROFILE
SECTION 1: STA 45+800 - 46+500

REV. No.	DATE	DESCRIPTION

SCALE: H=1:2,000
 V=1:200
 DRAWING No.: C-126



REV. No.	DATE	DESCRIPTION

SCALE: H=1:2,000 V=1:200	DRAWING No. C-127
-----------------------------	-------------------

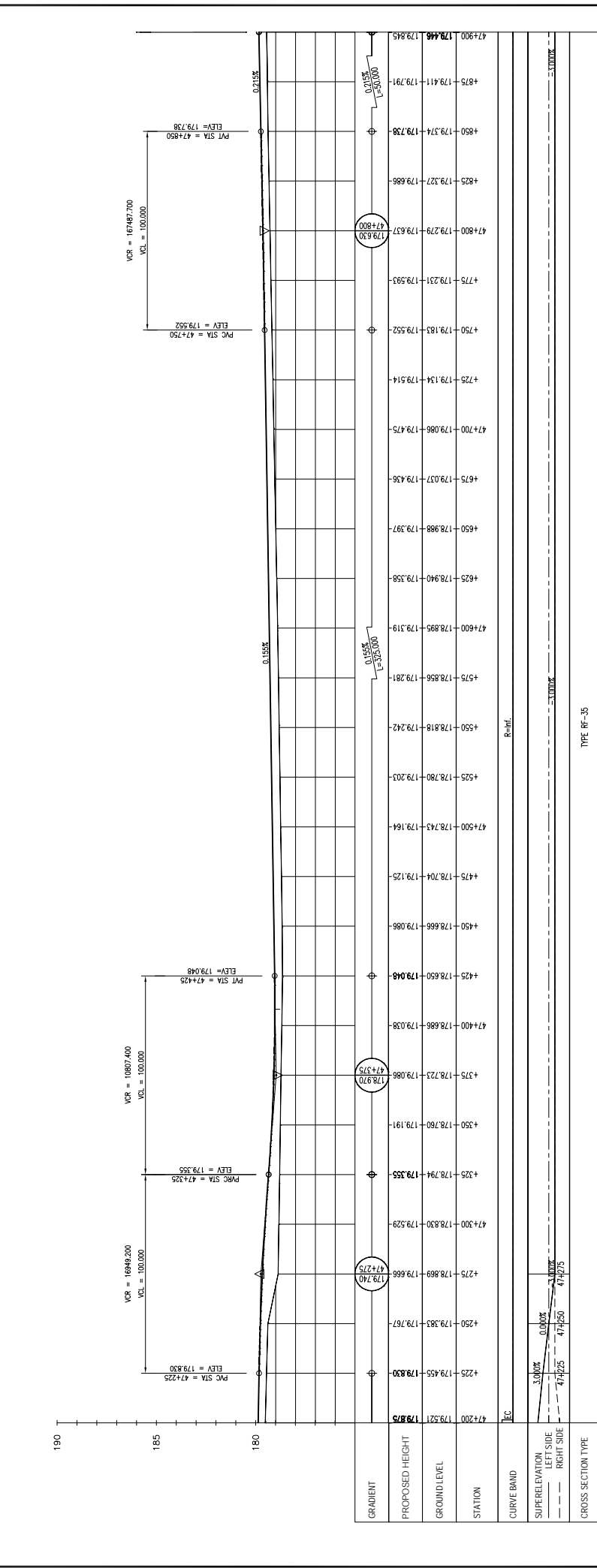
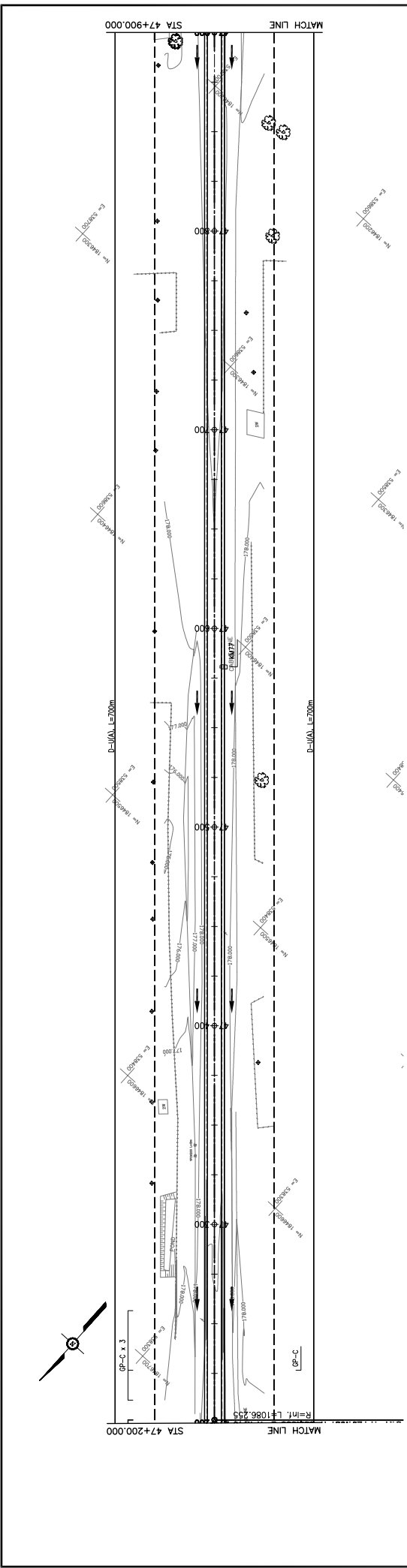
THE PROJECT FOR IMPROVEMENT OF NATIONAL ROAD No.9 AS EAST-WEST ECONOMIC CORRIDOR IN LAO PDR	MINISTRY OF PUBLIC WORKS AND TRANSPORT LAO PEOPLE'S DEMOCRATIC REPUBLIC
--	--

JAPAN INTERNATIONAL COOPERATION AGENCY THE CONSORTIUM OF ORIENTAL CONSULTANTS CO., LTD. INTERNATIONAL DEVELOPMENT CENTER OF JAPAN	SIGNATURE	NAME	TITLE

PLAN & PROFILE SECTION 1: STA 46+500 - 47+200	DRAWING TITLE
--	---------------

TYPE: RF-35

GRADIENT	46+500 179.547 179.778	46+525 180.150	46+550 179.902	46+575 179.717	46+600 180.084	46+625 180.085	46+650 180.051	46+675 180.051	46+700 180.035	46+725 180.019	46+750 180.002	46+775 179.986	46+800 179.989	46+825 179.953	46+850 179.950	46+875 179.973	46+900 180.023	46+925 180.100	46+950 180.173	46+975 180.213	47+000 180.218	47+025 180.190	47+050 180.100	47+075 179.714	47+100 180.055	47+125 179.965	47+150 179.645	47+175 179.594	47+200 179.675			
PROPOSED HEIGHT	46+500 180.150	46+525 180.084	46+550 179.902	46+575 179.717	46+600 180.085	46+625 180.085	46+650 180.051	46+675 180.051	46+700 180.035	46+725 180.019	46+750 180.002	46+775 179.986	46+800 179.989	46+825 179.953	46+850 179.950	46+875 179.973	46+900 180.023	46+925 180.100	46+950 180.173	46+975 180.213	47+000 180.218	47+025 180.190	47+050 180.100	47+075 179.714	47+100 180.055	47+125 179.965	47+150 179.645	47+175 179.594	47+200 179.675			
GROUND LEVEL	46+500 179.547	46+525 179.712	46+550 179.632	46+575 179.717	46+600 179.708	46+625 180.085	46+650 180.051	46+675 180.051	46+700 179.721	46+725 179.706	46+750 179.674	46+775 179.649	46+800 179.617	46+825 179.953	46+850 179.962	46+875 179.973	46+900 179.946	46+925 179.485	46+950 179.450	46+975 179.421	47+000 179.395	47+025 179.798	47+050 180.100	47+075 179.772	47+100 179.679	47+125 179.666	47+150 179.645	47+175 179.594	47+200 179.675			
STATION	46+500	46+525	46+550	46+575	46+600	46+625	46+650	46+675	46+700	46+725	46+750	46+775	46+800	46+825	46+850	46+875	46+900	46+925	46+950	46+975	47+000	47+025	47+050	47+075	47+100	47+125	47+150	47+175	47+200			
CURVE BAND	R=Inf.																															
SUPERELEVATION	0.000%																															
LEFT SIDE	0.000%																															
RIGHT SIDE	0.000%																															
CROSS SECTION TYPE	TYPE RF-35																															



STATION	PROPOSED HEIGHT	GROUND LEVEL	GRADIENT
47+200	179.521	179.819	
47+225	179.455	179.830	
47+250	179.383	179.787	
47+275	178.869	179.666	179.740
47+300	178.830	179.529	47+275
47+325	178.794	179.355	179.740
47+350	178.760	179.191	
47+375	178.723	179.086	178.910
47+400	178.686	179.038	47+375
47+425	178.650	179.048	178.910
47+450	178.666	179.086	
47+475	178.704	179.125	
47+500	178.743	179.164	
47+525	178.780	179.203	
47+550	178.818	179.242	
47+575	178.856	179.281	
47+600	178.895	179.319	178.910
47+625	178.940	179.358	
47+650	178.988	179.397	
47+675	179.037	179.436	
47+700	179.086	179.475	
47+725	179.134	179.514	
47+750	179.183	179.552	
47+775	179.231	179.593	
47+800	179.279	179.637	179.630
47+825	179.327	179.686	179.630
47+850	179.374	179.738	
47+875	179.411	179.791	
47+900	179.448	179.845	

**THE PROJECT FOR IMPROVEMENT OF NATIONAL ROAD No.9
AS EAST-WEST ECONOMIC CORRIDOR IN LAO PDR**

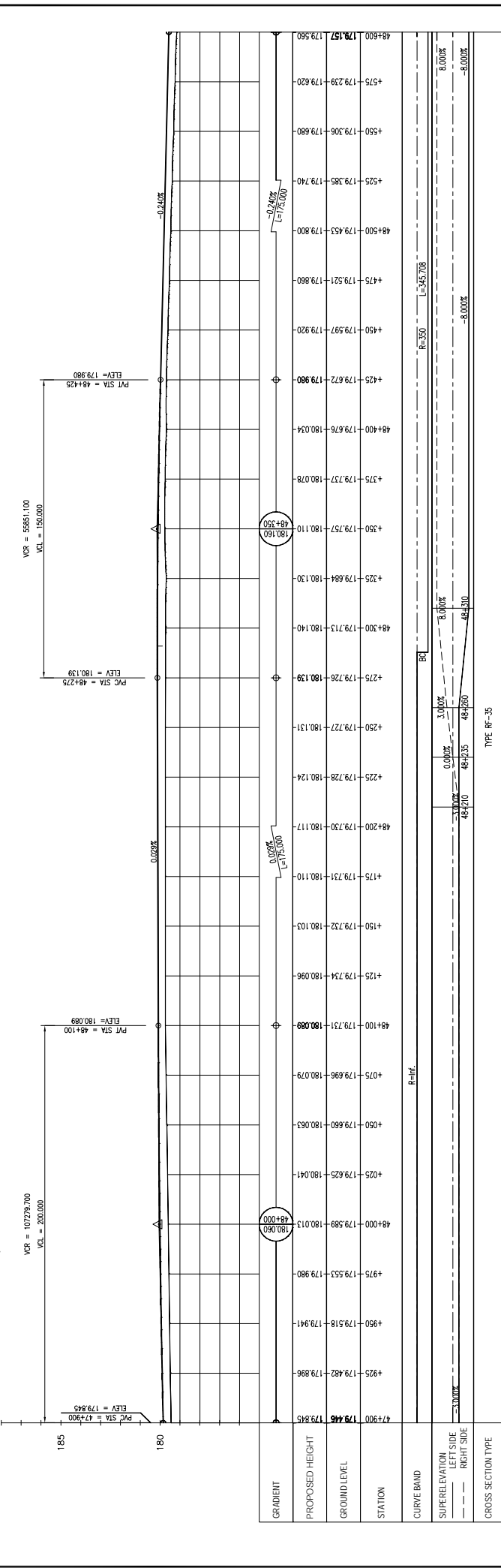
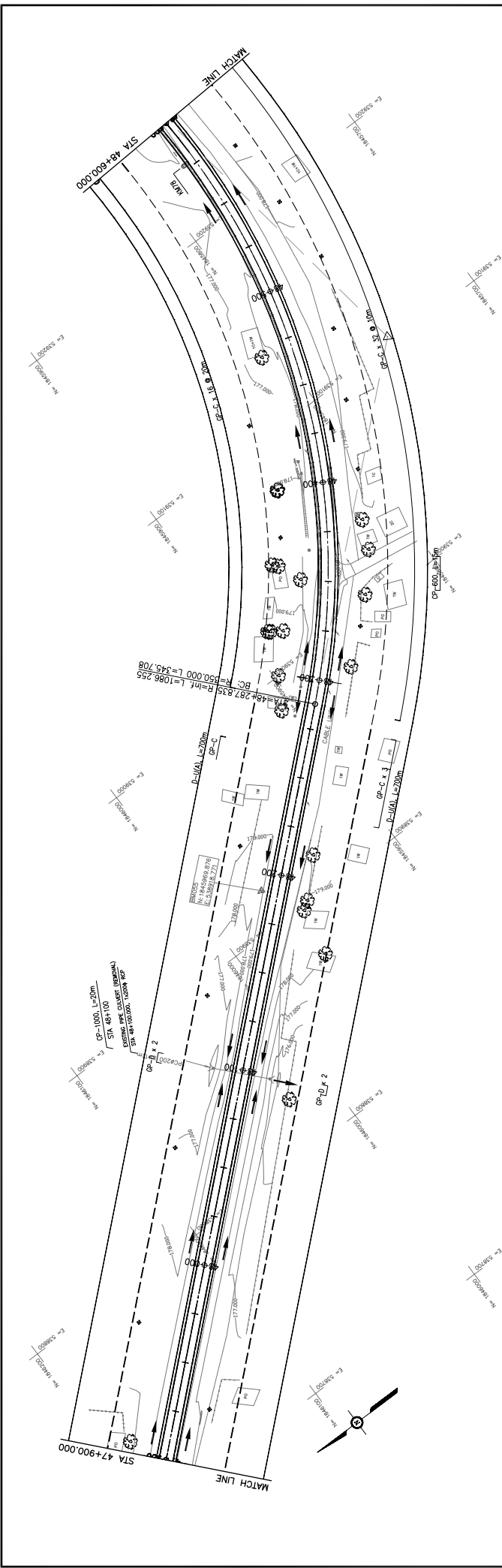
**MINISTRY OF PUBLIC WORKS AND TRANSPORT
LAO PEOPLE'S DEMOCRATIC REPUBLIC**

**PLAN & PROFILE
SECTION 1: STA 47+200 - 47+900**

TYPE: RP-35

SCALE: H=1:2,000 V=1:200	DESCRIPTION	DATE	REV. No.
DRAWING No. C-128			

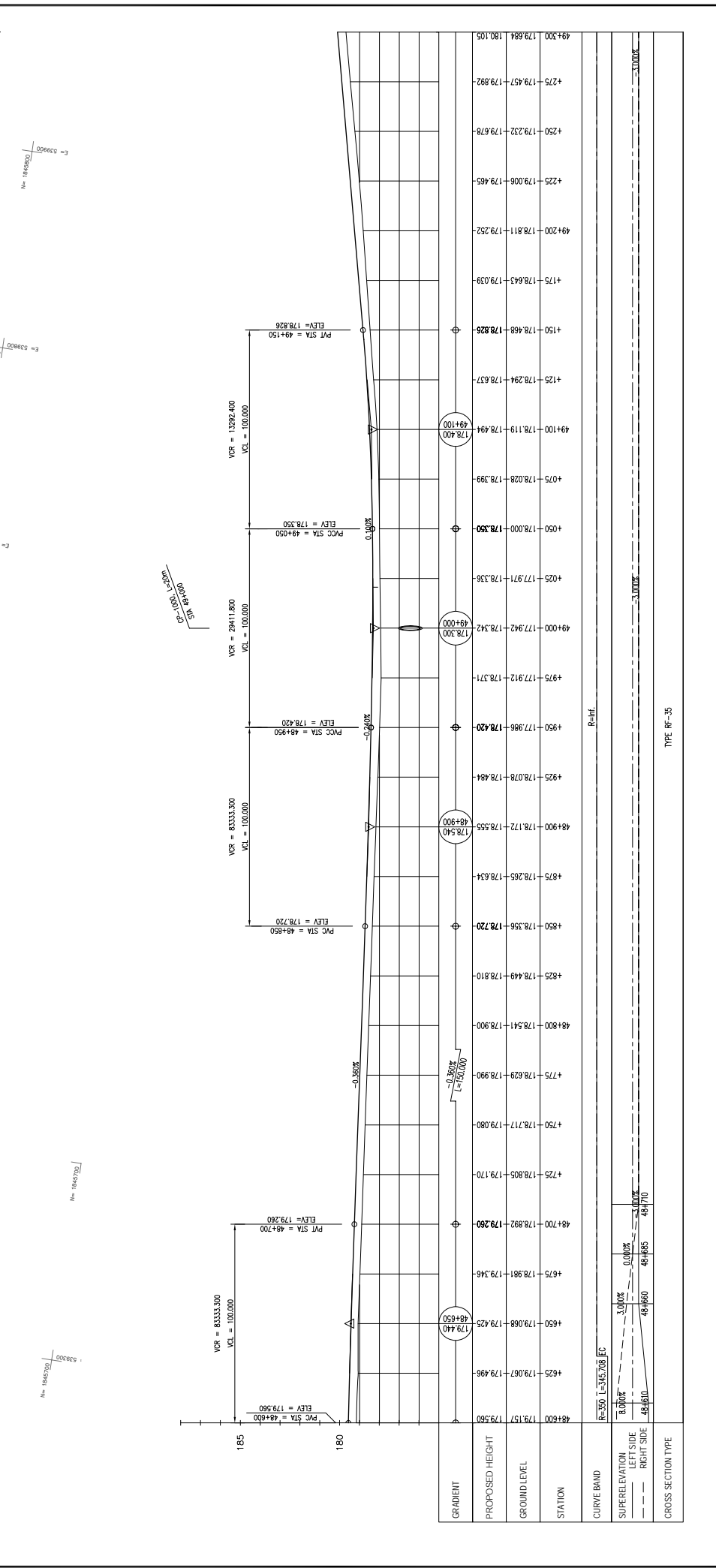
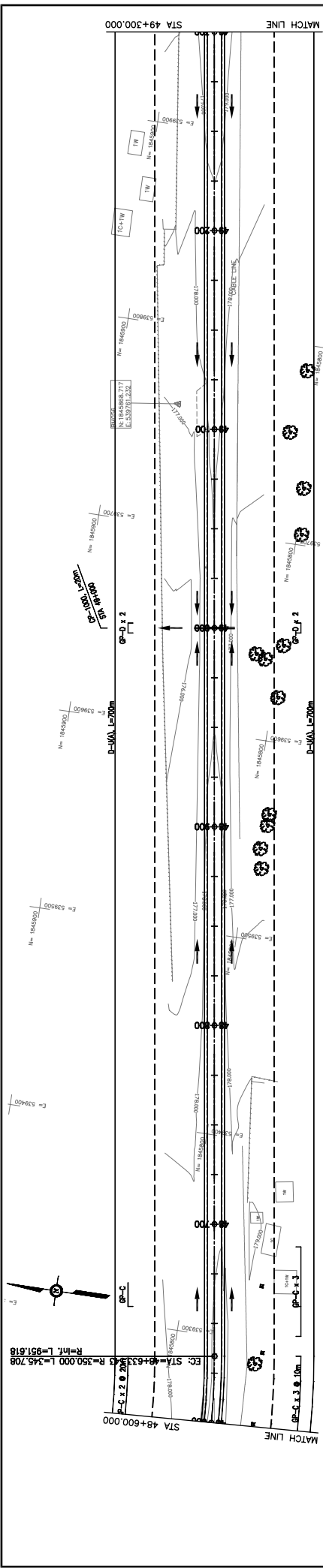
TITLE	NAME	SIGNATURE
PREPARED BY		
CHECKED BY		
APPROVED BY		



REV. No.	DATE	DESCRIPTION	SCALE
1			H=1:2,000
2			V=1:200
3			
4			
5			

THE PROJECT FOR IMPROVEMENT OF NATIONAL ROAD No.9 AS EAST-WEST ECONOMIC CORRIDOR IN LAO PDR	
DRAWING TITLE PLAN & PROFILE SECTION 1: STA 47+900 - 48+600	
DRAWING NO. C-129	

JAPAN INTERNATIONAL COOPERATION AGENCY THE CONSORTIUM OF ORIENTAL CONSULTANTS CO., LTD. INTERNATIONAL DEVELOPMENT CENTER OF JAPAN		MINISTRY OF PUBLIC WORKS AND TRANSPORT LAO PEOPLE'S DEMOCRATIC REPUBLIC	
TITLE	NAME	SIGNATURE	
PREPARED BY			
CHECKED BY			
APPROVED BY			



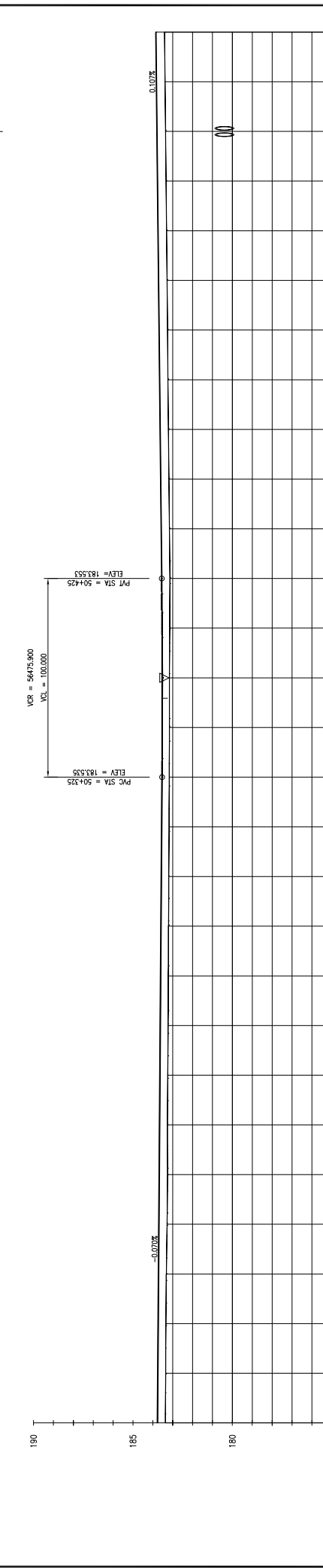
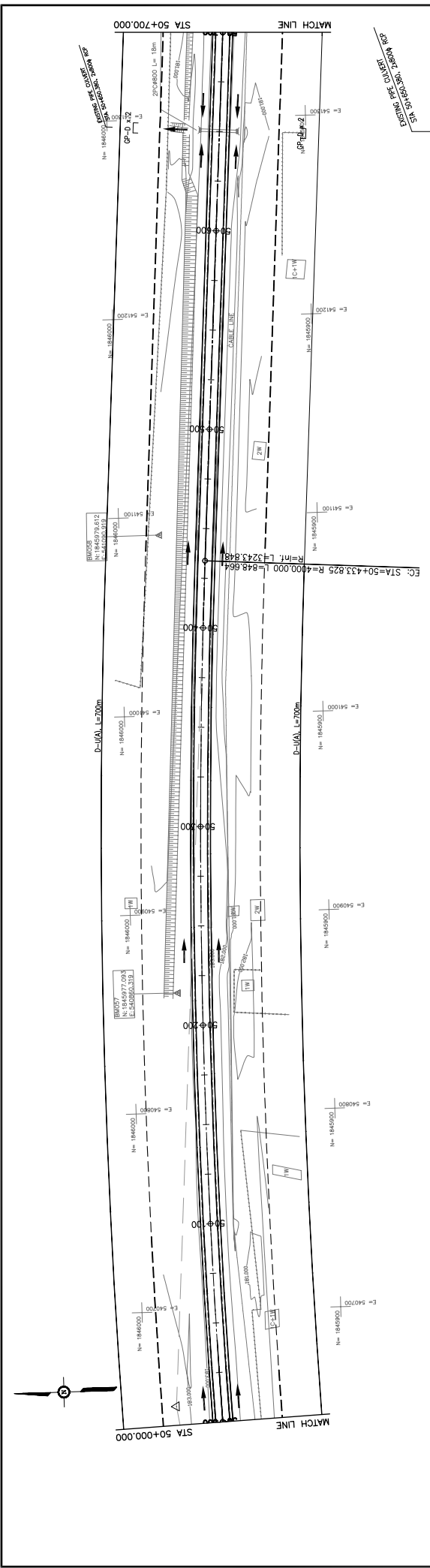
REV. No.	DATE	DESCRIPTION
1		
2		
3		

SCALE:	H=1:2,000
	V=1:200
DRAWING No.:	C-130

THE PROJECT FOR IMPROVEMENT OF NATIONAL ROAD No.9 AS EAST-WEST ECONOMIC CORRIDOR IN LAO PDR
MINISTRY OF PUBLIC WORKS AND TRANSPORT LAO PEOPLE'S DEMOCRATIC REPUBLIC
JAPAN INTERNATIONAL COOPERATION AGENCY THE CONSORTIUM OF ORIENTAL CONSULTANTS CO., LTD. INTERNATIONAL DEVELOPMENT CENTER OF JAPAN
DRAWING TITLE PLAN & PROFILE SECTION 1: STA 48+600 - 49+300

TITLE	NAME	SIGNATURE
PREPARED BY		
CHECKED BY		
APPROVED BY		

TYPE: RF-35
CROSS SECTION TYPE
CURVE BAND
SUPERELEVATION LEFT SIDE: 8.000% RIGHT SIDE: 0.000%
GRADIENT
PROPOSED HEIGHT
GROUND LEVEL
STATION



STATION	PROPOSED HEIGHT	GROUND LEVEL	GRADIENT
50+000	183.535	183.764	-0.07%
4025	183.350	183.746	-0.07%
4050	183.343	183.729	-0.07%
4075	183.318	183.711	-0.07%
50+100	183.280	183.694	-0.07%
4125	183.257	183.676	-0.07%
4150	183.262	183.658	-0.07%
4175	183.242	183.641	-0.07%
50+200	183.228	183.623	-0.07%
4225	183.217	183.606	-0.07%
4250	183.208	183.588	-0.07%
4275	183.192	183.570	-0.07%
50+300	183.180	183.553	-0.07%
4325	183.171	183.535	-0.07%
4350	183.164	183.523	-0.07%
4375	183.160	183.522	-0.07%
50+400	183.146	183.522	-0.07%
4425	183.137	183.553	-0.07%
4450	183.162	183.580	-0.07%
4475	183.186	183.607	-0.07%
50+500	183.210	183.633	-0.07%
4525	183.234	183.660	-0.07%
4550	183.258	183.687	-0.07%
4575	183.282	183.713	-0.07%
50+600	183.306	183.740	-0.07%
4625	183.331	183.767	-0.07%
4650	183.355	183.793	-0.07%
4675	183.379	183.820	-0.07%
50+700	183.403	183.847	-0.07%

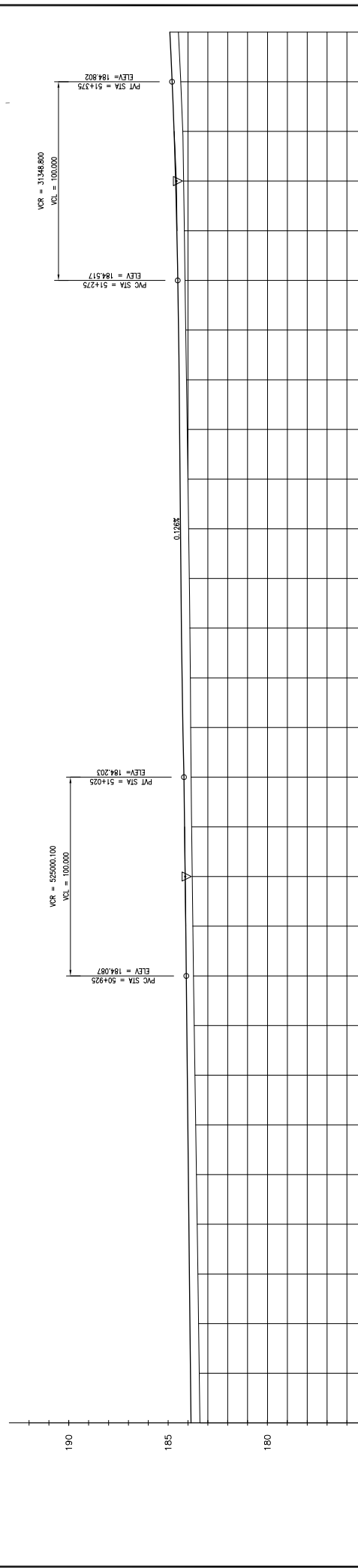
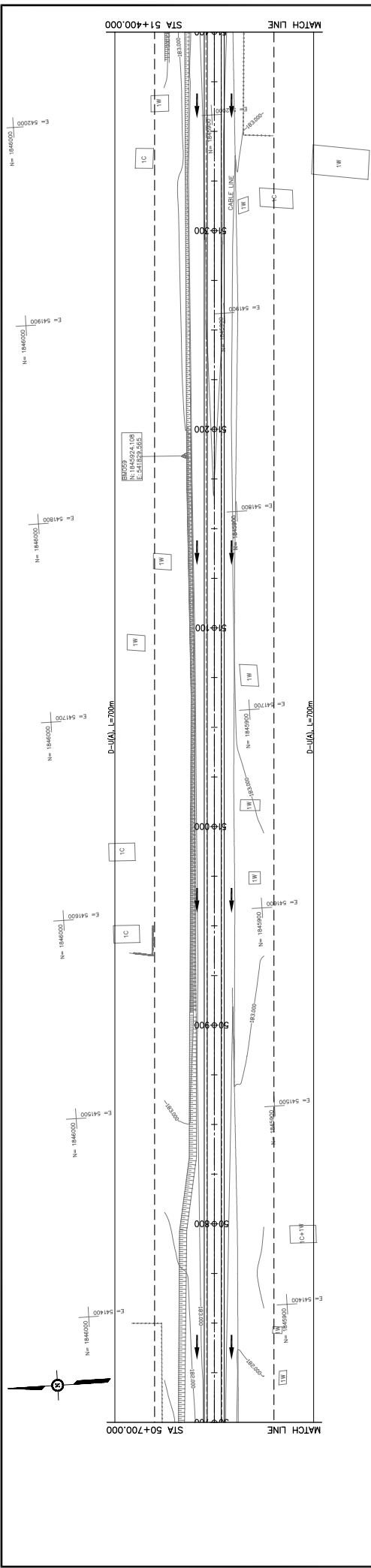
TYPE: RF-35

JAPAN INTERNATIONAL COOPERATION AGENCY
 THE CONSORTIUM OF
 ORIENTAL CONSULTANTS CO., LTD.
 INTERNATIONAL DEVELOPMENT CENTER OF JAPAN

THE PROJECT FOR IMPROVEMENT OF NATIONAL ROAD No.9
 AS EAST-WEST ECONOMIC CORRIDOR IN LAO PDR
 DRAWING TITLE: PLAN & PROFILE
 SECTION 1: STA 50+000 - 50+700

REV. No.	DATE	DESCRIPTION
1		
2		
3		

SCALE: H=1:2,000
 V=1:200
 DRAWING No.: C-132



GRADIENT	PROPOSED HEIGHT	GROUND LEVEL	STATION	CURVE BAND	SUPERELEVATION LEFT SIDE RIGHT SIDE	CROSS SECTION TYPE
			50+700			
			183.403			
			183.429			
			183.466			
			183.503			
			183.540			
			183.577			
			183.580			
			183.613			
			184.007			
			184.033			
			184.080			
			184.087			
			184.114			
			184.142			
			184.172			
			184.203			
			184.234			
			184.266			
			184.297			
			184.329			
			184.360			
			184.391			
			184.423			
			184.454			
			184.486			
			184.517			
			184.549			
			184.580			
			184.630			
			184.802			
			184.833			
			184.864			
			184.914			

TYPE RF-35

JAPAN INTERNATIONAL COOPERATION AGENCY
 THE CONSORTIUM OF
ORIENTAL CONSULTANTS CO., LTD.
 INTERNATIONAL DEVELOPMENT CENTER OF JAPAN

SCALE: H=1:2,000
V=1:200

REV No. DATE DESCRIPTION

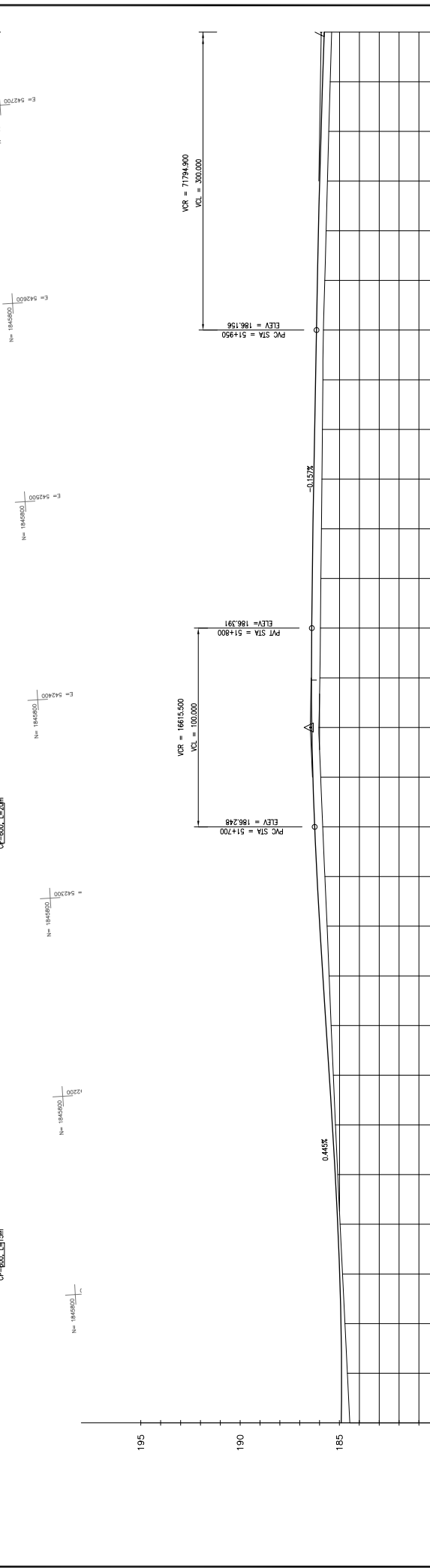
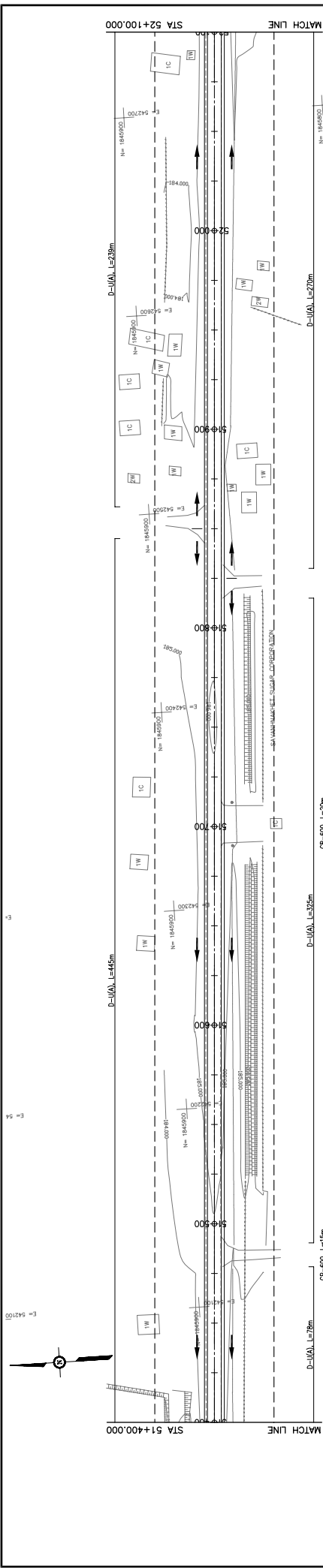
DRIVING TITLE

MINISTRY OF PUBLIC WORKS AND TRANSPORT
LAO PEOPLE'S DEMOCRATIC REPUBLIC

THE PROJECT FOR IMPROVEMENT OF NATIONAL ROAD No.9
AS EAST-WEST ECONOMIC CORRIDOR IN LAO PDR

PLAN & PROFILE
SECTION 1: STA 50+700 - 51+400

C-133



STATION	GROUND LEVEL	PROPOSED HEIGHT	GRADIENT
51+400	184.484	184.914	
4+25	184.605	185.025	
4+50	184.727	185.136	
4+75	184.847	185.247	
51+500	184.968	185.358	
4+525	185.089	185.469	
4+550	185.208	185.581	
4+575	185.313	185.692	
51+600	185.418	185.803	
4+625	185.523	185.914	
4+650	185.627	186.025	
4+675	185.732	186.136	
51+700	185.841	186.248	
4+725	185.942	186.340	
4+750	186.040	186.395	
4+775	186.142	186.412	
51+800	186.248	186.391	
4+825	186.346	186.352	
4+850	186.444	186.313	
4+875	186.542	186.274	
51+900	186.640	186.234	
4+925	186.738	186.195	
4+950	186.836	186.156	
4+975	186.934	186.117	
52+000	187.032	186.078	
4+025	187.130	186.039	
4+050	187.228	186.000	
4+075	187.326	185.961	
52+100	187.424	185.922	

CROSS SECTION TYPE: TYPE RF-35

JAPAN INTERNATIONAL COOPERATION AGENCY
 THE CONSORTIUM OF
 ORIENTAL CONSULTANTS CO., LTD.
 INTERNATIONAL DEVELOPMENT CENTER OF JAPAN

THE PROJECT FOR IMPROVEMENT OF NATIONAL ROAD No.9
 AS EAST-WEST ECONOMIC CORRIDOR IN LAO PDR
 MINISTRY OF PUBLIC WORKS AND TRANSPORT
 LAO PEOPLE'S DEMOCRATIC REPUBLIC

PLAN & PROFILE
 SECTION 1: STA 51+400 - 52+100

SCALE: H=1:2,000
 V=1:200
 DRAWING NO.: C-134