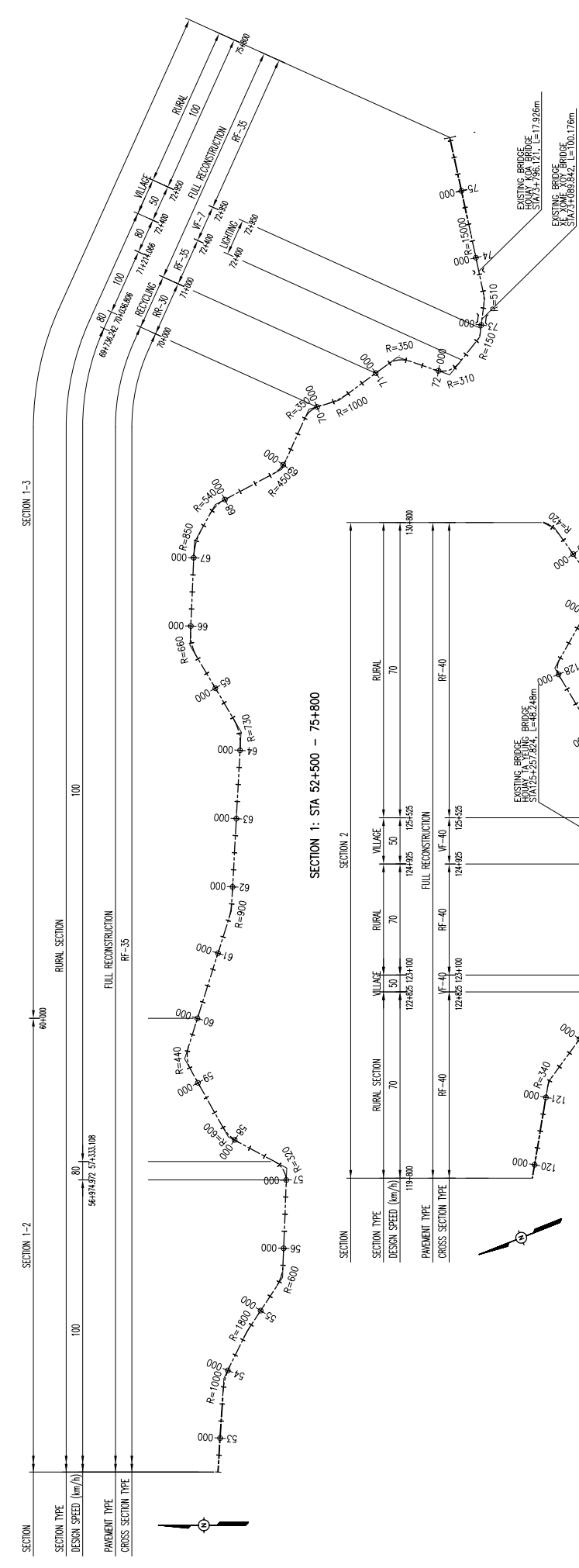
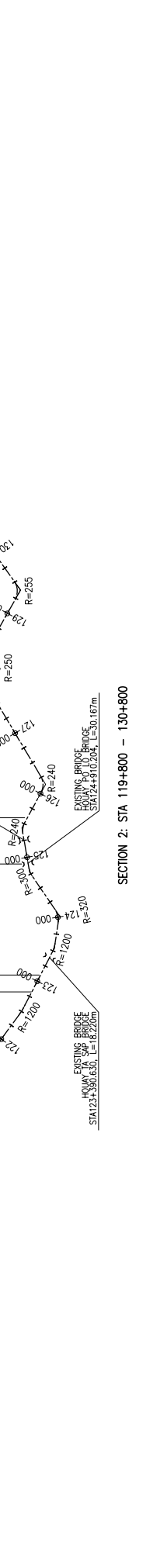


SECTION 1: STA 28+800 - 52+500

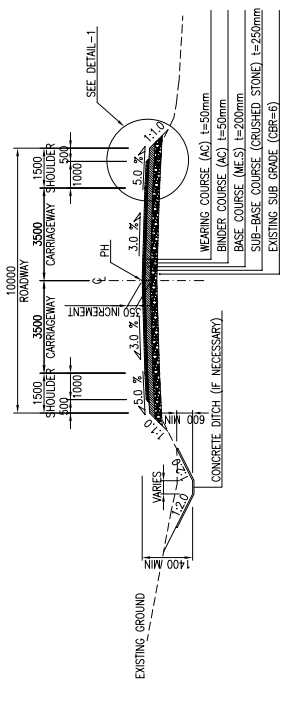


SECTION 1: STA 52+500 - 75+800

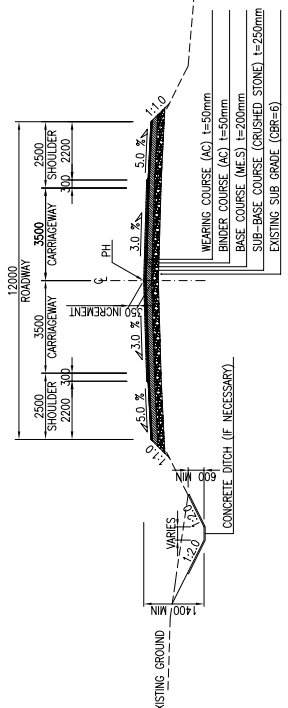


SECTION 2: STA 119+800 - 130+800

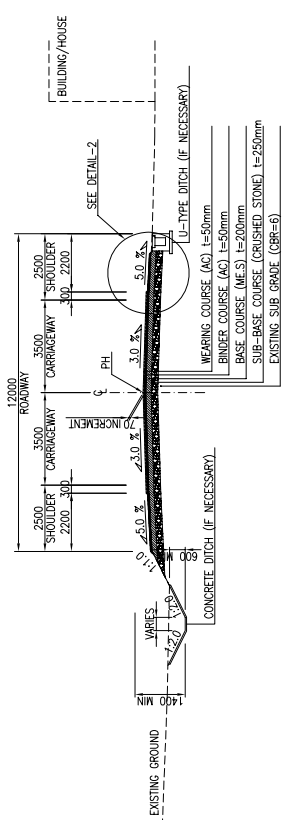
		JAPAN INTERNATIONAL COOPERATION AGENCY THE CONSORTIUM OF ORIENTAL CONSULTANTS CO., LTD. INTERNATIONAL DEVELOPMENT CENTER OF JAPAN		MINISTRY OF PUBLIC WORKS AND TRANSPORT LAO PEOPLE'S DEMOCRATIC REPUBLIC		THE PROJECT FOR IMPROVEMENT OF NATIONAL ROAD No.9 AS EAST-WEST ECONOMIC CORRIDOR IN LAO PDR		GUIDE MAP	
TITLE	NAME	SIGNATURE	DATE	REV. No.	DESCRIPTION	SCALE			
PREPARED BY						1:60,000			
CHECKED BY									
APPROVED BY									
							DRAWING No.	A-02	



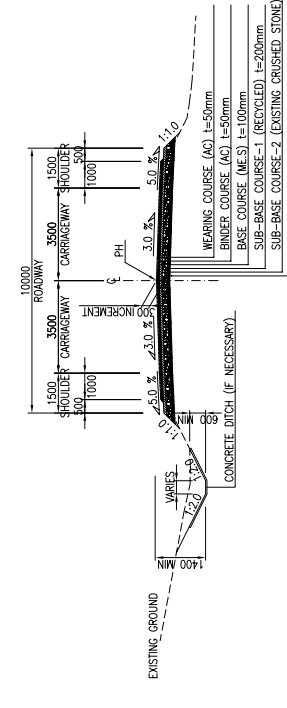
RURAL SECTION - FULL RECONSTRUCTION (RF-35)



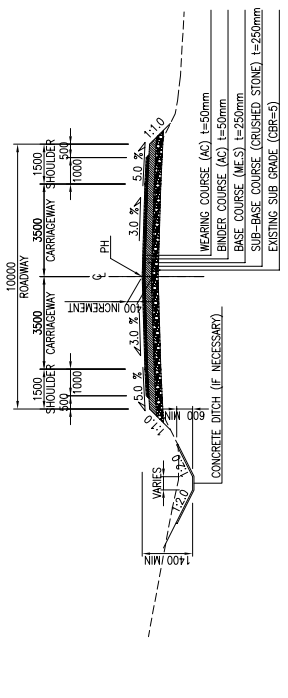
VILLAGE SECTION - FULL RECONSTRUCTION (VF-35)



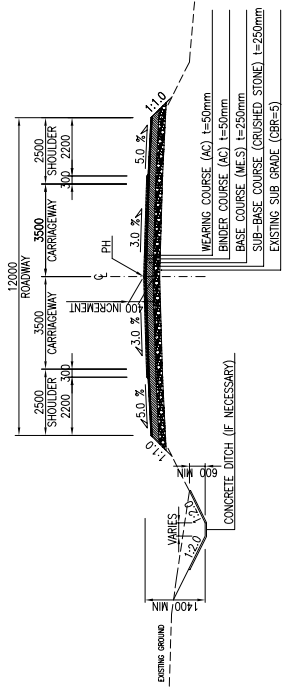
VILLAGE SECTION - FULL RECONSTRUCTION (VF-7)



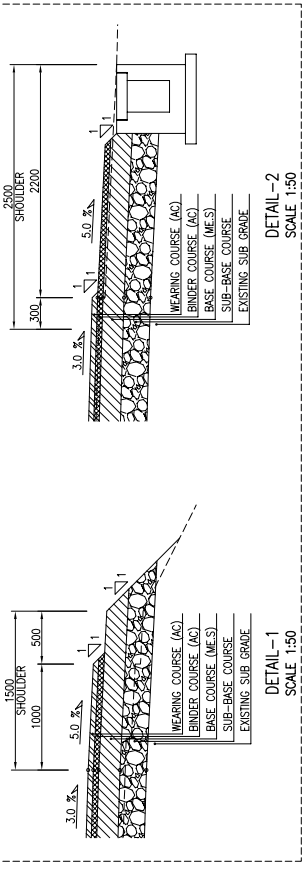
RURAL SECTION - IN-SITU RECYCLING OF BASE COURSE (RR-30)



RURAL SECTION - FULL RECONSTRUCTION (RF-40)

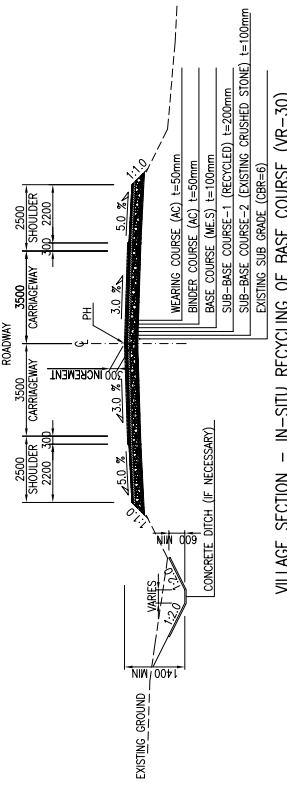


VILLAGE SECTION - FULL RECONSTRUCTION (VF-40)



DETAIL - 1
SCALE 1:50

DETAIL - 2
SCALE 1:50

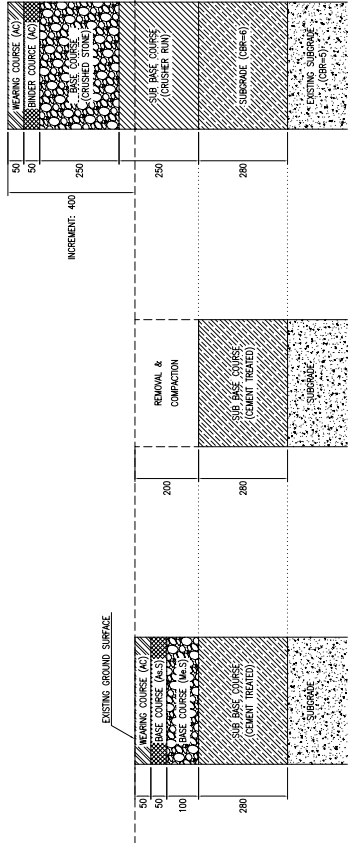


VILLAGE SECTION - IN-SITU RECYCLING OF BASE COURSE (VR-30)

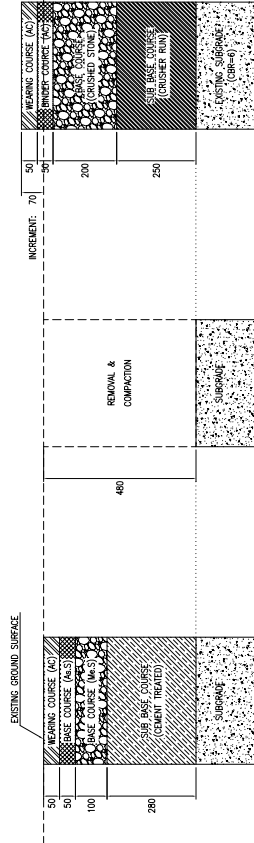
FULL RECONSTRUCTION

IN-SITU RECYCLING OF BASE COURSE

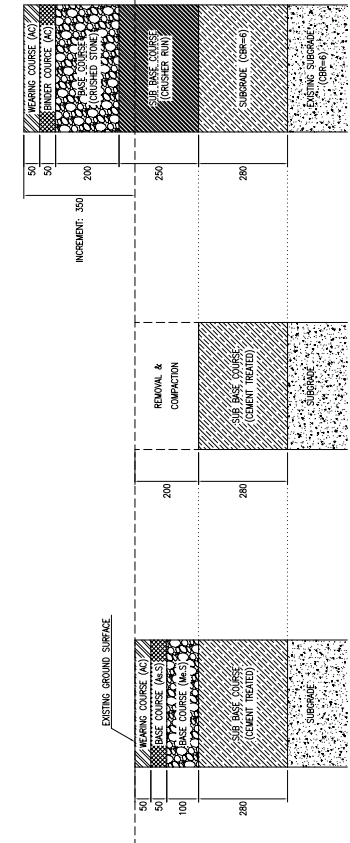
		JAPAN INTERNATIONAL COOPERATION AGENCY THE CONSORTIUM OF ORIENTAL CONSULTANTS CO., LTD. INTERNATIONAL DEVELOPMENT CENTER OF JAPAN		MINISTRY OF PUBLIC WORKS AND TRANSPORT LAO PEOPLE'S DEMOCRATIC REPUBLIC		THE PROJECT FOR IMPROVEMENT OF NATIONAL ROAD No.9 AS EAST-WEST ECONOMIC CORRIDOR IN LAO PDR		TYPICAL CROSS SECTION	
TITLE	NAME	SIGNATURE	DATE	DESCRIPTION	SCALE	REV. No.	DATE	DESCRIPTION	SCALE
PREPARED BY					1:200	0			
CHECKED BY						1			
APPROVED BY						2			
						3			
DRAWING TITLE									



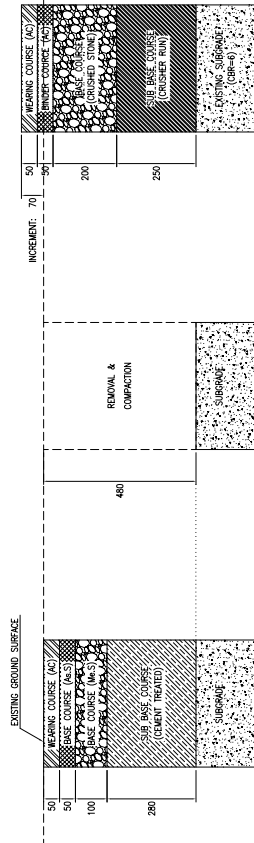
FULL RECONSTRUCTION (RURAL SECTION) - SECTION 2



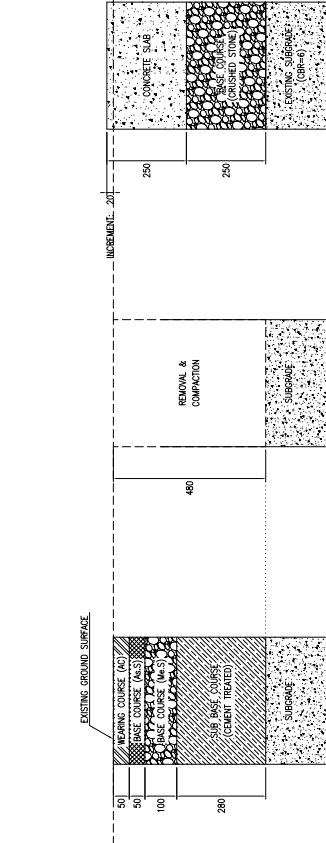
FULL RECONSTRUCTION (VILLAGE SECTION) - SECTION 2



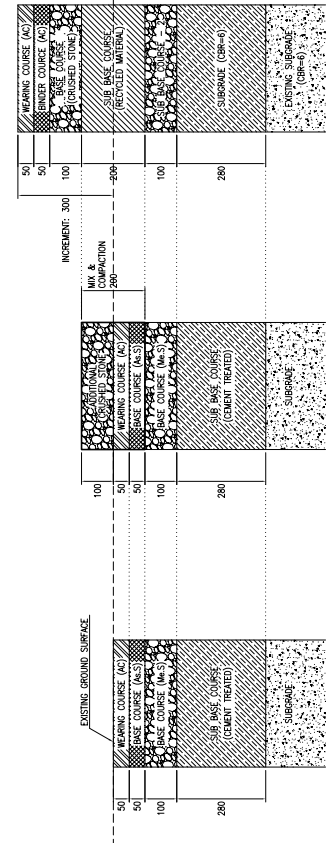
FULL RECONSTRUCTION (RURAL SECTION) - SECTION 1



FULL RECONSTRUCTION (VILLAGE SECTION) - SECTION 1

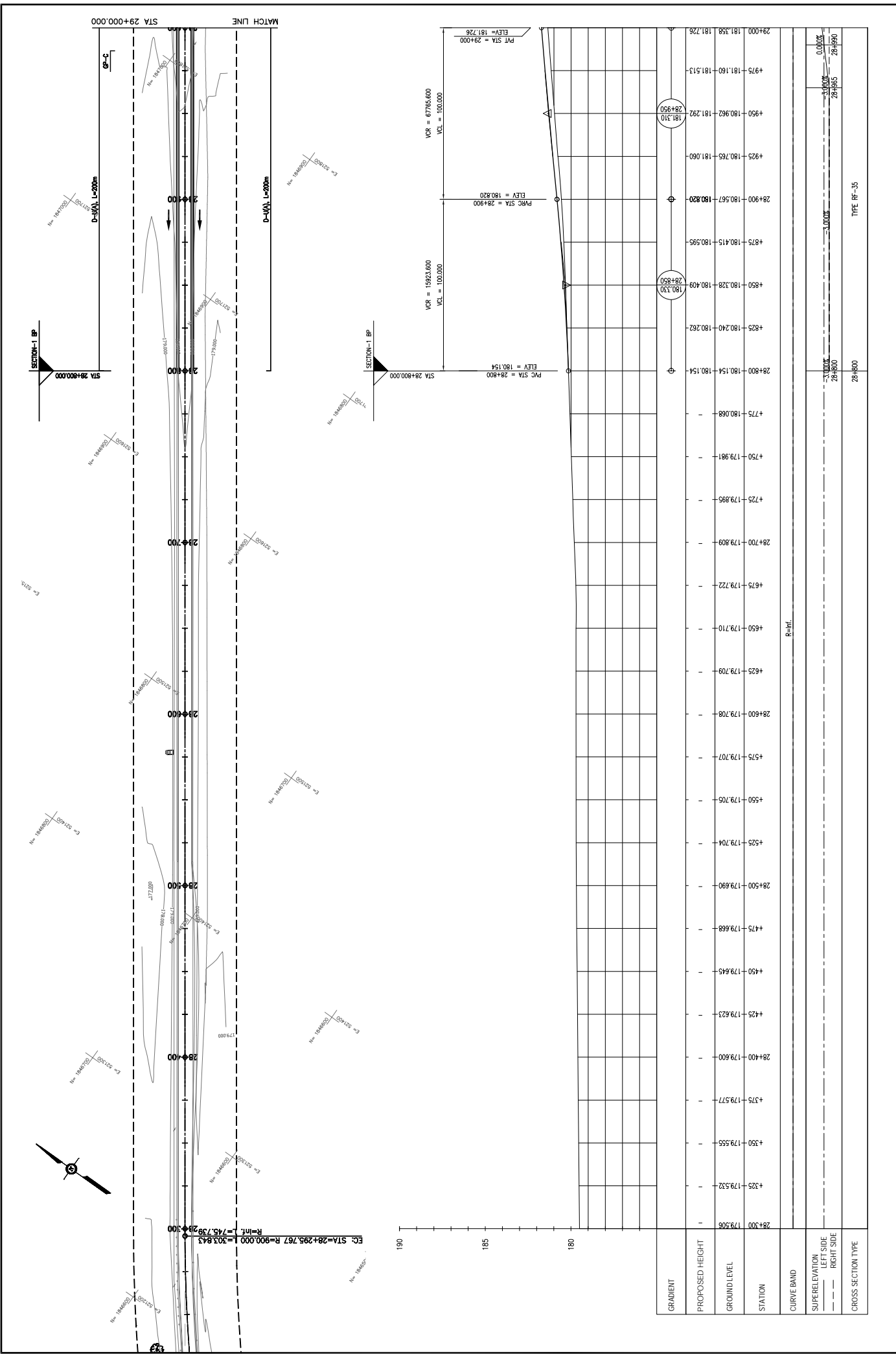


CONCRETE PAVEMENT - SECTION 1



IN-SITU RECYCLING OF BASE COURSE - SECTION 1

		JAPAN INTERNATIONAL COOPERATION AGENCY THE CONSORTIUM OF ORIENTAL CONSULTANTS CO., LTD. INTERNATIONAL DEVELOPMENT CENTER OF JAPAN		MINISTRY OF PUBLIC WORKS AND TRANSPORT LAO PEOPLE'S DEMOCRATIC REPUBLIC		THE PROJECT FOR IMPROVEMENT OF NATIONAL ROAD No.9 AS EAST-WEST ECONOMIC CORRIDOR IN LAO PDR DRAWING TITLE PAVEMENT DETAILS		REV. No. 0 1 2 3	DATE 	DESCRIPTION 	SCALE: N/A DRAWING No.: A-05
--	--	--	--	--	--	--	--	---------------------------	----------------------	-----------------------------	--



STATION	PROPOSED HEIGHT	GROUND LEVEL	GRADIENT
28+300	179.506	179.532	-
+350	179.555	179.577	-
28+400	179.600	179.623	-
+425	179.645	179.668	-
28+500	179.690	179.704	-
+475	179.705	179.709	-
28+600	179.708	179.710	-
+575	179.722	179.722	-
28+700	179.809	179.809	-
+725	179.895	179.895	-
+750	179.981	179.981	-
28+800	180.154	180.154	-
+825	180.240	180.240	-
28+900	180.567	180.567	-
+925	180.765	180.765	-
+950	180.962	180.962	-
29+000	181.358	181.358	-
29+000	181.726	181.726	-

JAPAN INTERNATIONAL COOPERATION AGENCY
THE CONSORTIUM OF
ORIENTAL CONSULTANTS CO., LTD.
INTERNATIONAL DEVELOPMENT CENTER OF JAPAN

MINISTRY OF PUBLIC WORKS AND TRANSPORT
LAO PEOPLE'S DEMOCRATIC REPUBLIC

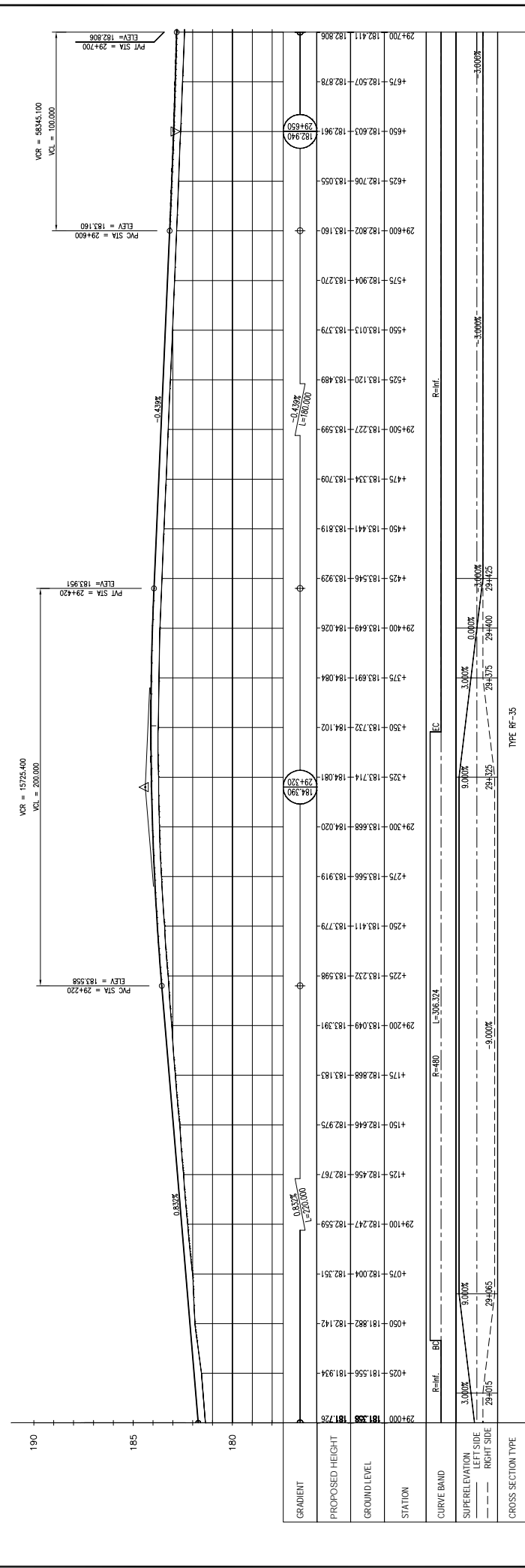
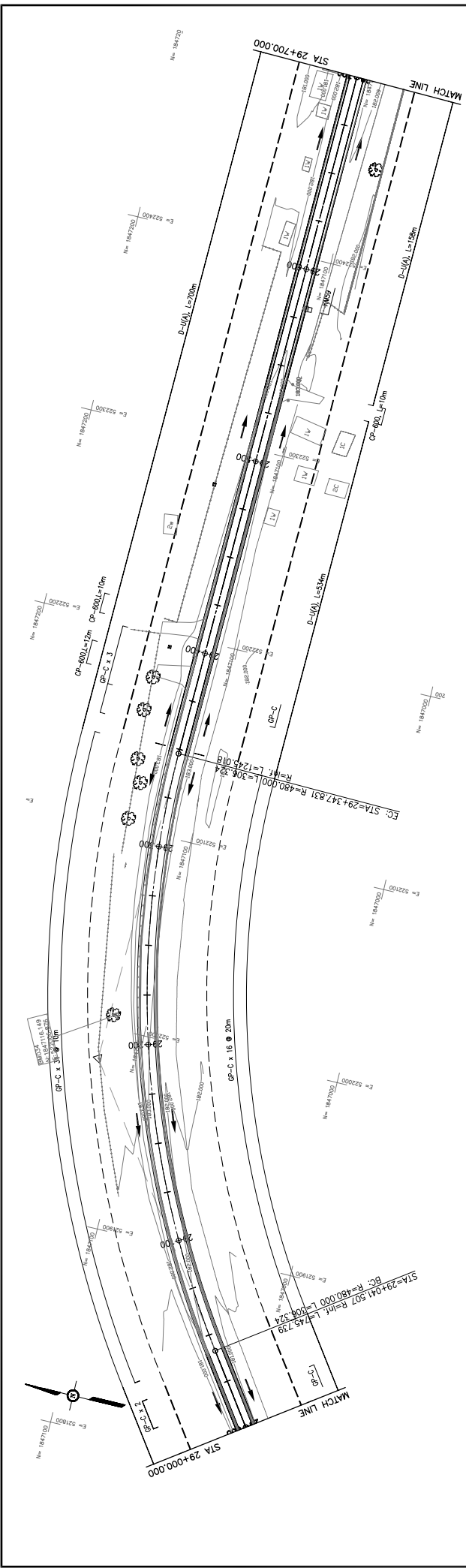
THE PROJECT FOR IMPROVEMENT OF NATIONAL ROAD No.9
AS EAST-WEST ECONOMIC CORRIDOR IN LAO PDR

DRAWING TITLE: **PLAN & PROFILE**
 SECTION 1: STA. 28+300 - 29+000

REV. No.	DATE	DESCRIPTION

SCALE: H=1:2,000
V=1:200

DRAWING No. **C-101**



STATION	ELEVATION	PROPOSED HEIGHT	GRADIENT
29+000	181.26	181.26	0.33%
29+100	182.27	182.559	-0.2000%
29+200	183.049	183.391	-0.458%
29+300	183.668	184.020	-0.458%
29+400	183.649	184.026	-0.458%
29+500	183.227	183.599	-0.458%
29+600	182.802	183.160	-0.458%
29+700	182.411	182.878	-0.458%

STATION	ELEVATION	PROPOSED HEIGHT	GRADIENT
29+000	181.26	181.26	0.33%
29+100	182.247	182.559	-0.2000%
29+200	183.049	183.391	-0.458%
29+300	183.668	184.020	-0.458%
29+400	183.649	184.026	-0.458%
29+500	183.227	183.599	-0.458%
29+600	182.802	183.160	-0.458%
29+700	182.411	182.878	-0.458%

PLAN & PROFILE
SECTION 1: STA. 29+000 - 29+700

DRAWING TITLE

MINISTRY OF PUBLIC WORKS AND TRANSPORT
LAO PEOPLE'S DEMOCRATIC REPUBLIC

THE PROJECT FOR IMPROVEMENT OF NATIONAL ROAD No.9
AS EAST-WEST ECONOMIC CORRIDOR IN LAO PDR

SCALE: H=1:2,000
V=1:200

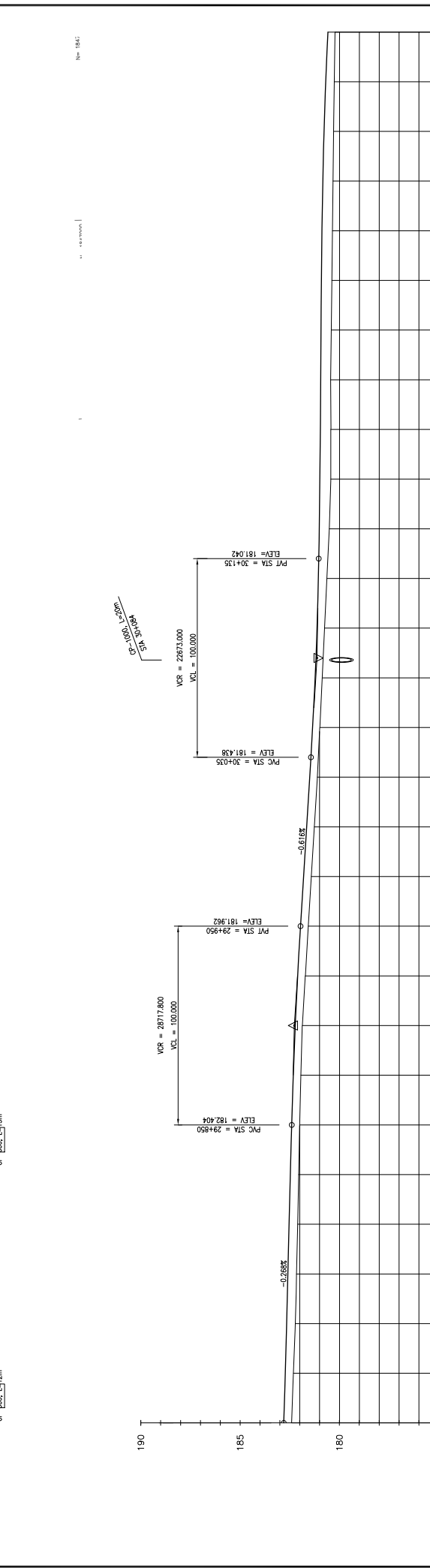
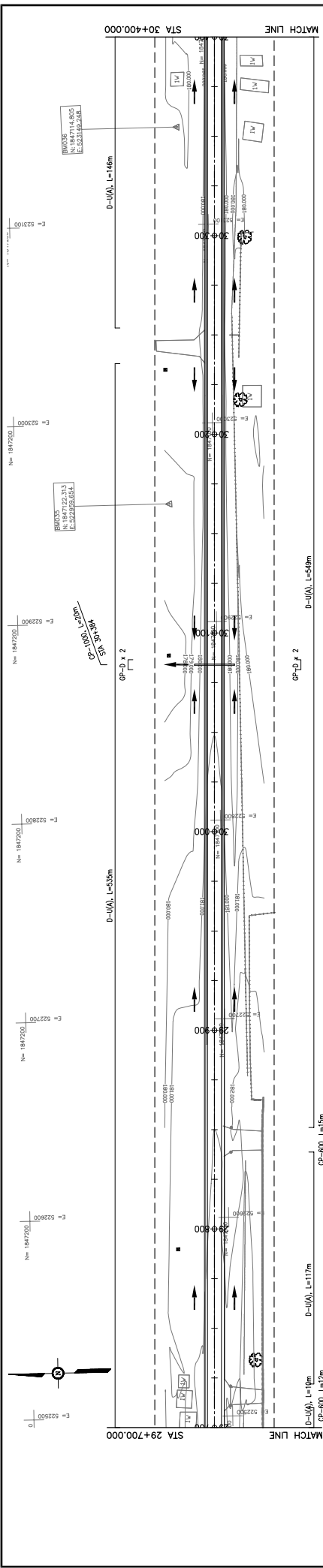
DRAWING NO. C-102

REV. No.	DATE	DESCRIPTION

TITLE	NAME	SIGNATURE
PREPARED BY		
CHECKED BY		
APPROVED BY		

JAPAN INTERNATIONAL COOPERATION AGENCY
THE CONSORTIUM OF
ORIENTAL CONSULTANTS CO., LTD.
INTERNATIONAL DEVELOPMENT CENTER OF JAPAN

jica JICA ORIENTAL CONSULTANTS CO., LTD.



STATION	PROPOSED HEIGHT	GROUND LEVEL	GRADIENT
29+700	182.411	182.806	
+725	182.317	182.739	
+750	182.223	182.672	
+775	182.162	182.605	
+800	182.108	182.538	
+825	182.054	182.471	
+850	181.999	182.404	
+875	181.945	182.336	
+900	181.871	182.268	
+925	181.720	182.105	
+950	181.568	181.962	
+975	181.417	181.808	
+1000	181.264	181.654	
+1025	181.113	181.500	
+1050	180.990	181.351	
+1075	180.872	181.227	
+1100	180.753	181.131	
+125	180.635	181.082	
+150	180.515	181.016	
+175	180.439	180.972	
+200	180.433	180.929	
+225	180.446	180.885	
+250	180.416	180.841	
+275	180.398	180.797	
+300	180.356	180.753	
+325	180.325	180.710	
+350	180.294	180.666	
+375	180.264	180.622	
30+400	180.226	180.578	

TYPE: RF-35

CROSS SECTION TYPE

SUPERELEVATION LEFT SIDE: -3.000%

SUPERELEVATION RIGHT SIDE: -3.000%

CURVE BAND: R=inf.

JAPAN INTERNATIONAL COOPERATION AGENCY
 THE CONSORTIUM OF
ORIENTAL CONSULTANTS CO., LTD.
INTERNATIONAL DEVELOPMENT CENTER OF JAPAN

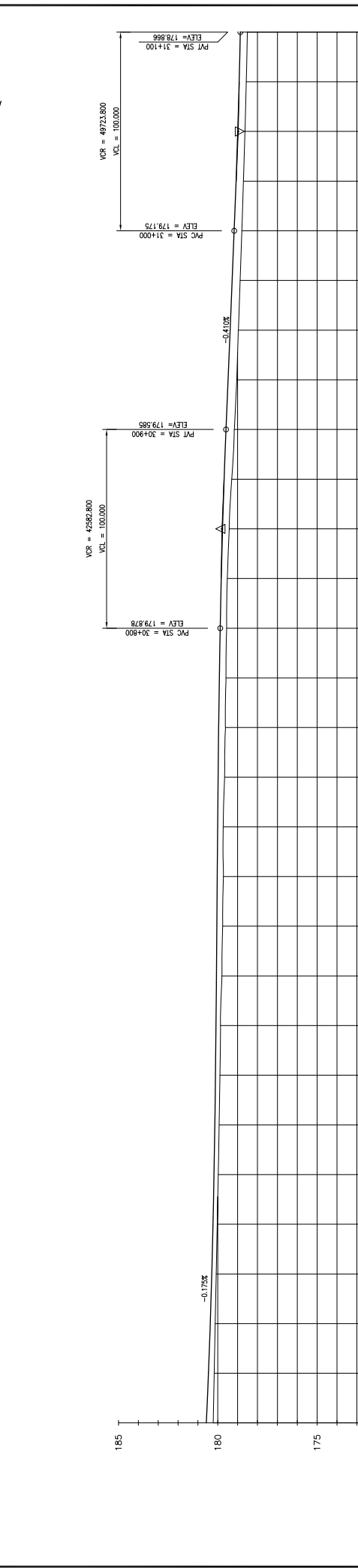
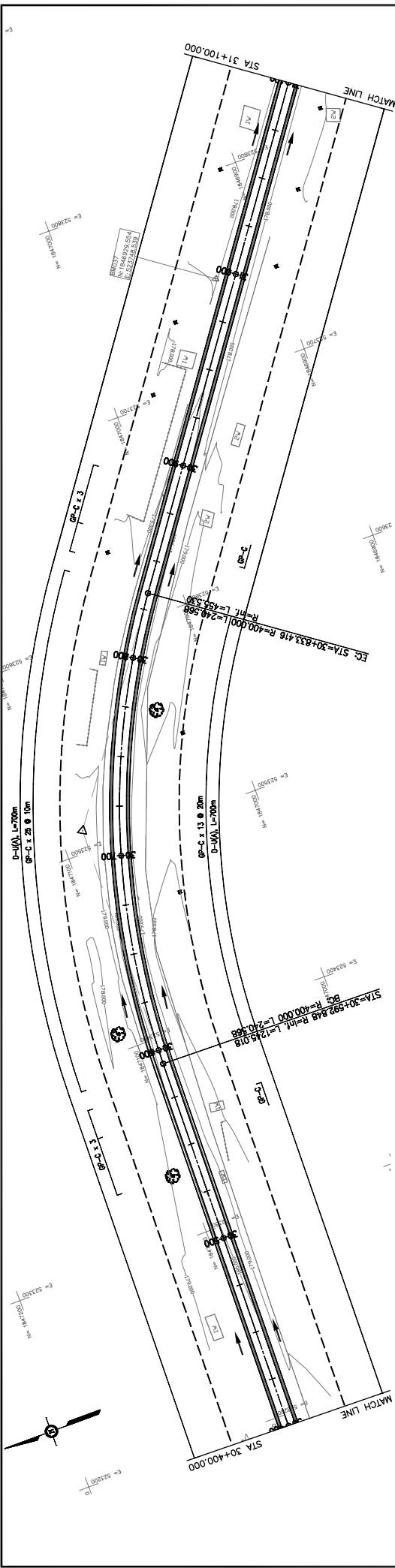
MINISTRY OF PUBLIC WORKS AND TRANSPORT
LAO PEOPLE'S DEMOCRATIC REPUBLIC

THE PROJECT FOR IMPROVEMENT OF NATIONAL ROAD No.9
AS EAST-WEST ECONOMIC CORRIDOR IN LAO PDR

PLAN & PROFILE
SECTION 1: STA. 29+700 - 30+400

REV. No.	DATE	DESCRIPTION

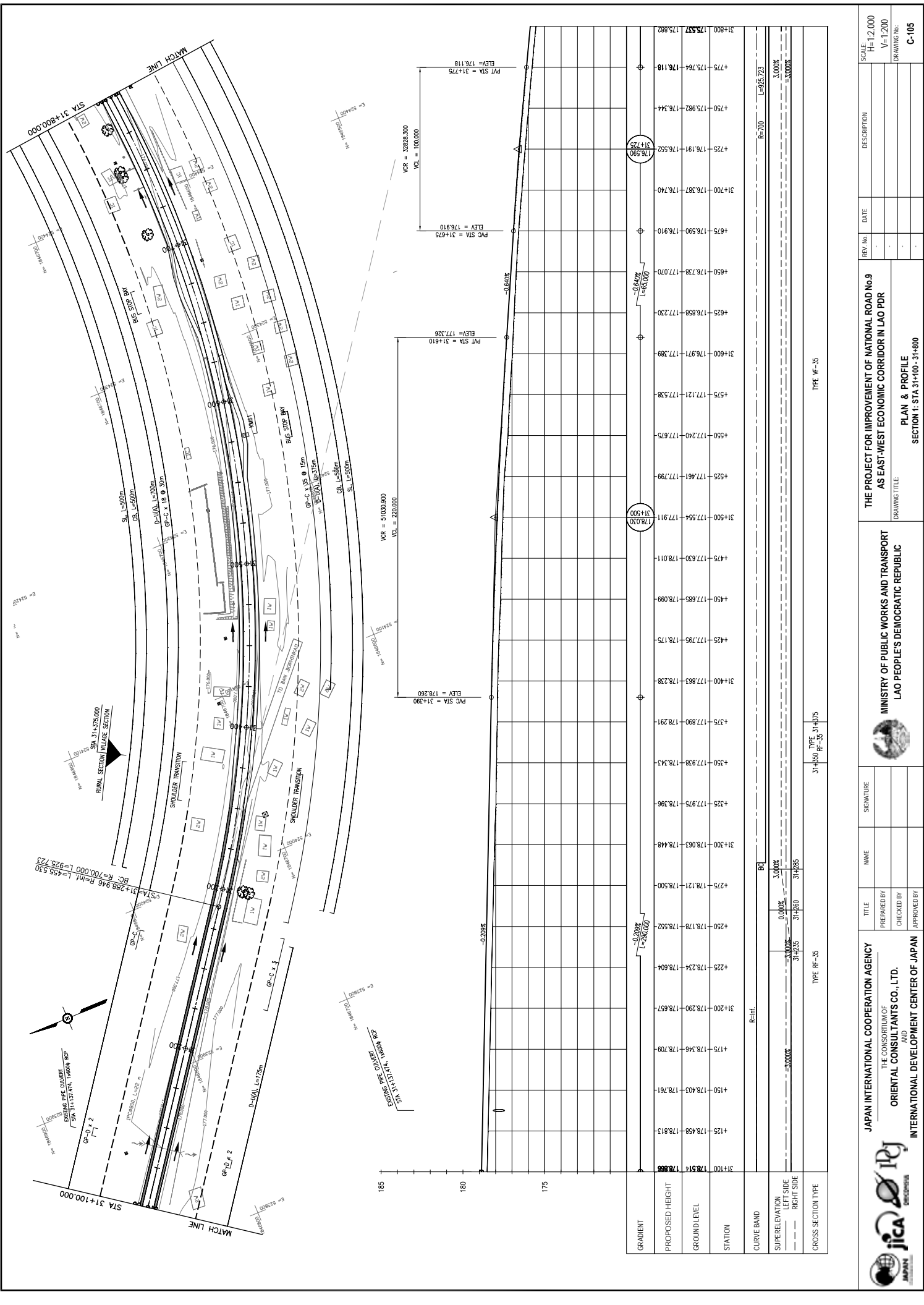
SCALE: H=1:2,000
 V=1:200
 DRAWING No.: **C-103**



GRADIENT	PROPOSED HEIGHT	GROUND LEVEL	STATION	CURVE BAND	SUPERELEVATION LEFT SIDE RIGHT SIDE	CROSS SECTION TYPE
			30+400		-3.000%	
			180.226		-3.000%	
			180.578		-3.000%	
			4+25		-3.000%	
			180.178		-3.000%	
			180.534		-3.000%	
			4+25		-3.000%	
			180.129		-3.000%	
			180.491		-3.000%	
			4+50		-3.000%	
			180.080		-3.000%	
			180.447		-3.000%	
			4+75		-3.000%	
			180.030		-3.000%	
			180.403		-3.000%	
			4+25		-3.000%	
			179.978		-3.000%	
			180.359		-3.000%	
			4+50		-3.000%	
			179.928		-3.000%	
			180.315		-3.000%	
			4+50		-3.000%	
			179.888		-3.000%	
			180.272		-3.000%	
			30+600		-3.000%	
			179.863		-3.000%	
			180.228		-3.000%	
			4+25		-3.000%	
			179.786		-3.000%	
			180.184		-3.000%	
			4+25		-3.000%	
			179.750		-3.000%	
			180.140		-3.000%	
			4+50		-3.000%	
			179.712		-3.000%	
			180.097		-3.000%	
			30+700		-3.000%	
			179.724		-3.000%	
			180.053		-3.000%	
			4+25		-3.000%	
			179.651		-3.000%	
			180.009		-3.000%	
			4+75		-3.000%	
			179.583		-3.000%	
			179.921		-3.000%	
			30+800		-3.000%	
			179.549		-3.000%	
			179.878		-3.000%	
			4+25		-3.000%	
			179.521		-3.000%	
			179.826		-3.000%	
			4+50		-3.000%	
			179.424		-3.000%	
			179.761		-3.000%	
			30+900		-3.000%	
			179.169		-3.000%	
			179.585		-3.000%	
			4+25		-3.000%	
			179.041		-3.000%	
			179.483		-3.000%	
			4+25		-3.000%	
			178.879		-3.000%	
			179.278		-3.000%	
			4+75		-3.000%	
			178.794		-3.000%	
			179.175		-3.000%	
			31+000		-3.000%	
			178.710		-3.000%	
			179.079		-3.000%	
			4+25		-3.000%	
			178.627		-3.000%	
			178.995		-3.000%	
			4+50		-3.000%	
			178.514		-3.000%	
			178.866		-3.000%	
			31+100		-3.000%	

TYPE: RF-35

JAPAN INTERNATIONAL COOPERATION AGENCY	MINISTRY OF PUBLIC WORKS AND TRANSPORT	THE PROJECT FOR IMPROVEMENT OF NATIONAL ROAD No.9	AS EAST-WEST ECONOMIC CORRIDOR IN LAO PDR	REVISION	DATE	DESCRIPTION	SCALE: H=1:2,000 V=1:200
THE CONSORTIUM OF ORIENTAL CONSULTANTS CO., LTD.	LAO PEOPLE'S DEMOCRATIC REPUBLIC	DRAWING TITLE PLAN & PROFILE		REV. No.			DRAWING No.
INTERNATIONAL DEVELOPMENT CENTER OF JAPAN		SECTION 1: STA. 30+400 - 31+100					C-104



STATION	GROUND LEVEL	PROPOSED HEIGHT
31+100	175.514	178.865
+125	178.458	178.813
+150	178.403	178.761
+175	178.346	178.709
+200	178.290	178.657
+225	178.234	178.604
+250	178.178	178.552
+275	178.121	178.500
+300	178.063	178.448
+325	177.975	178.396
+350	177.938	178.343
+375	177.890	178.291
+400	177.863	178.238
+425	177.795	178.175
+450	177.688	178.099
+475	177.630	178.011
+500	177.554	177.911
+525	177.461	177.799
+550	177.240	177.675
+575	177.121	177.538
+600	176.971	177.389
+625	176.858	177.230
+650	176.738	177.070
+675	176.590	176.910
+700	176.387	176.740
+725	176.191	176.552
+750	175.982	176.344
+775	175.764	176.118
+800	175.537	175.882

JAPAN INTERNATIONAL COOPERATION AGENCY
 THE CONSORTIUM OF
ORIENTAL CONSULTANTS CO., LTD.
 INTERNATIONAL DEVELOPMENT CENTER OF JAPAN

MINISTRY OF PUBLIC WORKS AND TRANSPORT
LAO PEOPLE'S DEMOCRATIC REPUBLIC

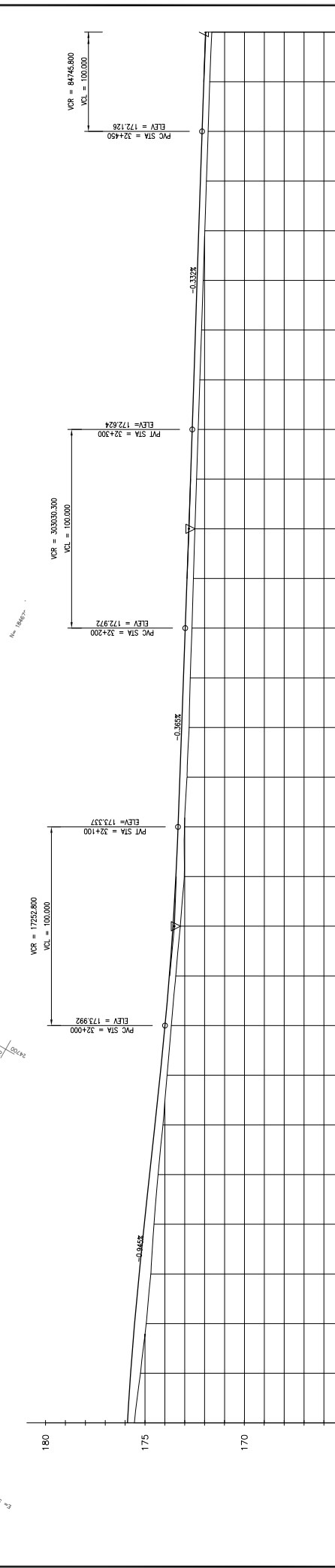
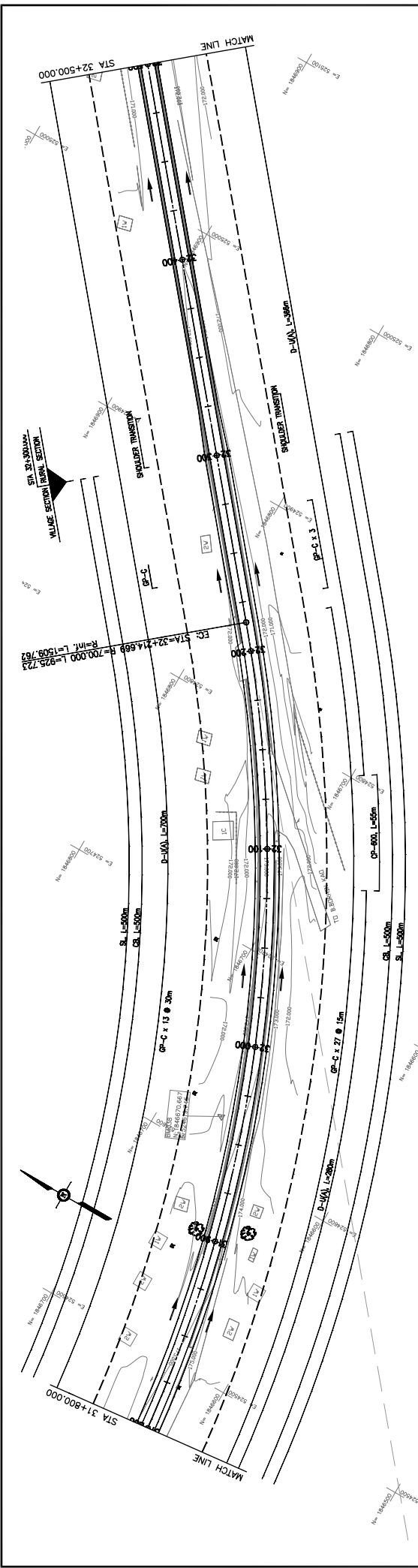
THE PROJECT FOR IMPROVEMENT OF NATIONAL ROAD No.9
AS EAST-WEST ECONOMIC CORRIDOR IN LAO PDR

PLAN & PROFILE
SECTION 1: STA 31+100 - 31+800

DRAWING TITLE: SECTION 1: STA 31+100 - 31+800
 DRAWING NO.: C-105

REV. No.	DATE	DESCRIPTION

SCALE: H=1:2,000
 V=1:200



GRADIENT	PROPOSED HEIGHT	GROUND LEVEL	STATION
-0.945%	175.537	175.582	31+800
-0.945%	175.537	175.645	31+825
-0.945%	174.544	174.937	31+900
-0.945%	174.339	174.701	31+925
-0.945%	174.091	174.465	31+950
-0.945%	173.882	174.228	31+975
-0.945%	173.675	173.992	32+000
-0.945%	173.448	173.774	32+025
-0.945%	173.223	173.592	32+050
-0.945%	173.019	173.337	32+100
-0.945%	172.881	173.246	32+125
-0.945%	172.778	173.155	32+150
-0.945%	172.722	173.064	32+175
-0.945%	172.633	172.972	32+200
-0.945%	172.565	172.882	32+225
-0.945%	172.489	172.794	32+250
-0.945%	172.407	172.708	32+275
-0.945%	172.323	172.624	32+300
-0.945%	172.240	172.541	32+325
-0.945%	172.157	172.458	32+350
-0.945%	172.074	172.375	32+375
-0.945%	171.991	172.292	32+400
-0.945%	171.907	172.209	32+425
-0.945%	171.825	172.126	32+450
-0.945%	171.745	172.039	32+475
-0.945%	171.640	171.945	32+500

CROSS SECTION TYPE: TYPE WF-35 (32+800) TYPE VP-30 (32+200) TYPE RR-30 (32+500)

JAPAN INTERNATIONAL COOPERATION AGENCY
 THE CONSORTIUM OF
ORIENTAL CONSULTANTS CO., LTD.
INTERNATIONAL DEVELOPMENT CENTER OF JAPAN

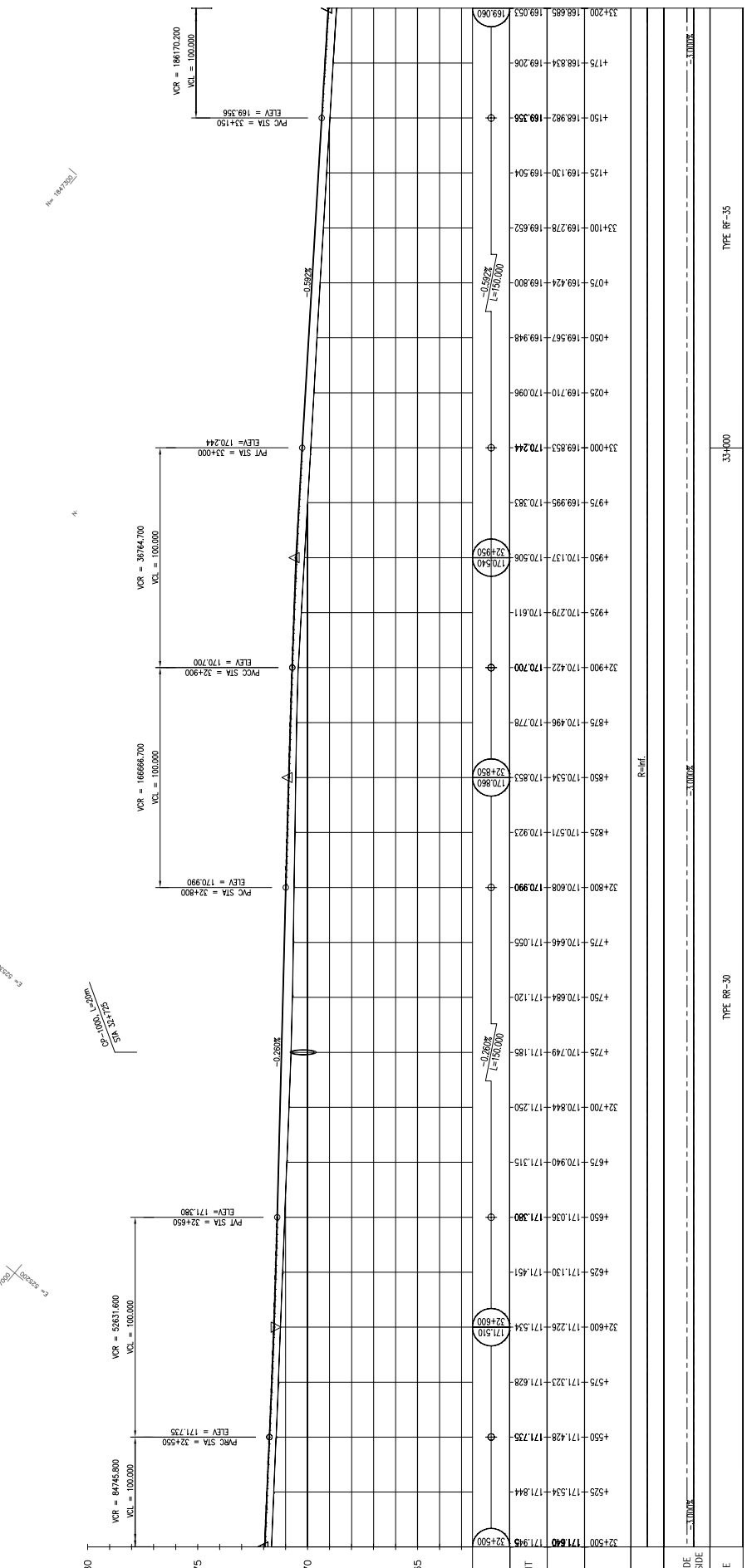
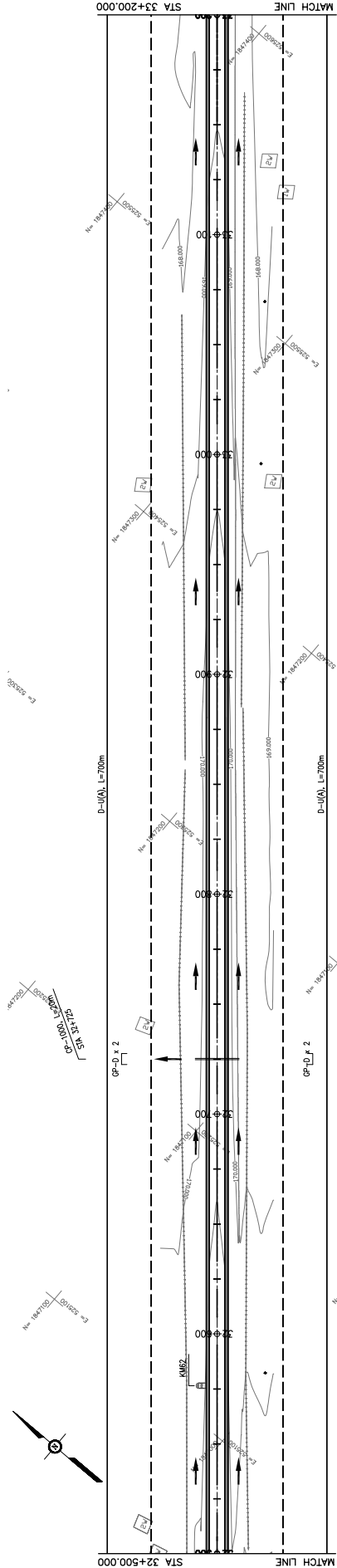
MINISTRY OF PUBLIC WORKS AND TRANSPORT
LAO PEOPLE'S DEMOCRATIC REPUBLIC

THE PROJECT FOR IMPROVEMENT OF NATIONAL ROAD No.9
AS EAST-WEST ECONOMIC CORRIDOR IN LAO PDR

DRAWING TITLE: **PLAN & PROFILE**
 SECTION 1: STA. 31+800 - 32+500

REV. No.	DATE	DESCRIPTION
1		
2		
3		

SCALE: H=1:2,000 V=1:200
 DRAWING No.: **C-106**



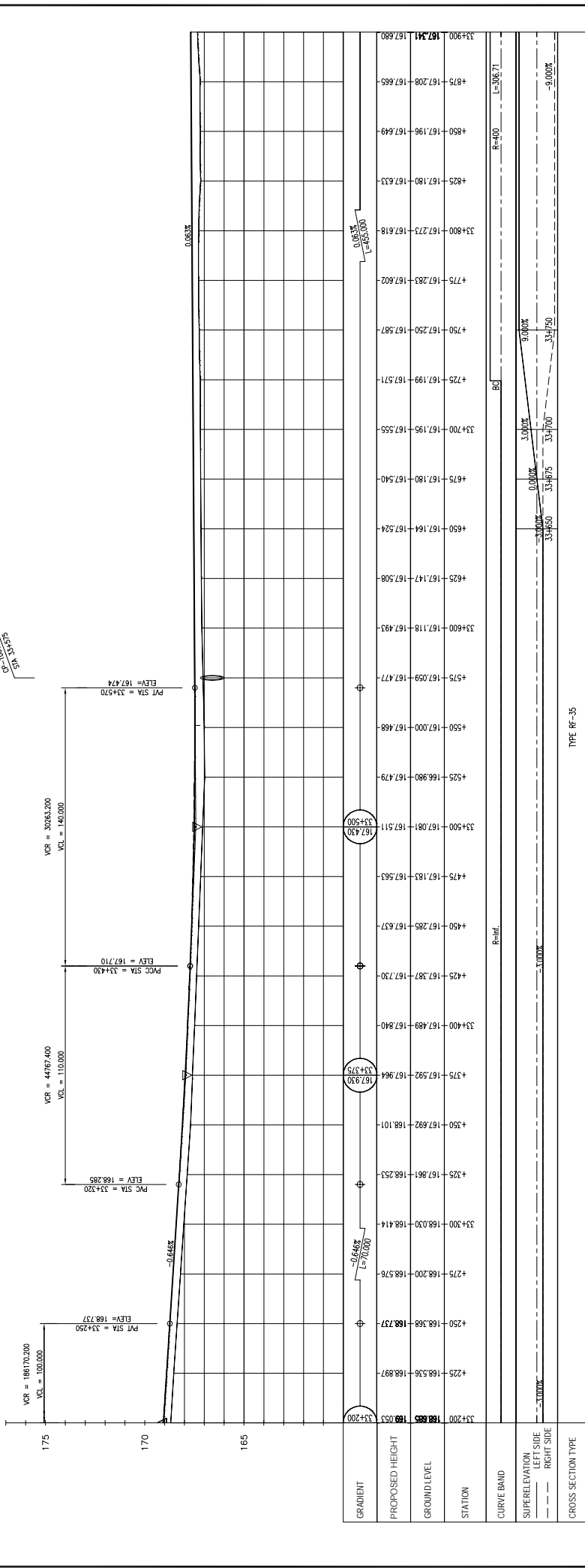
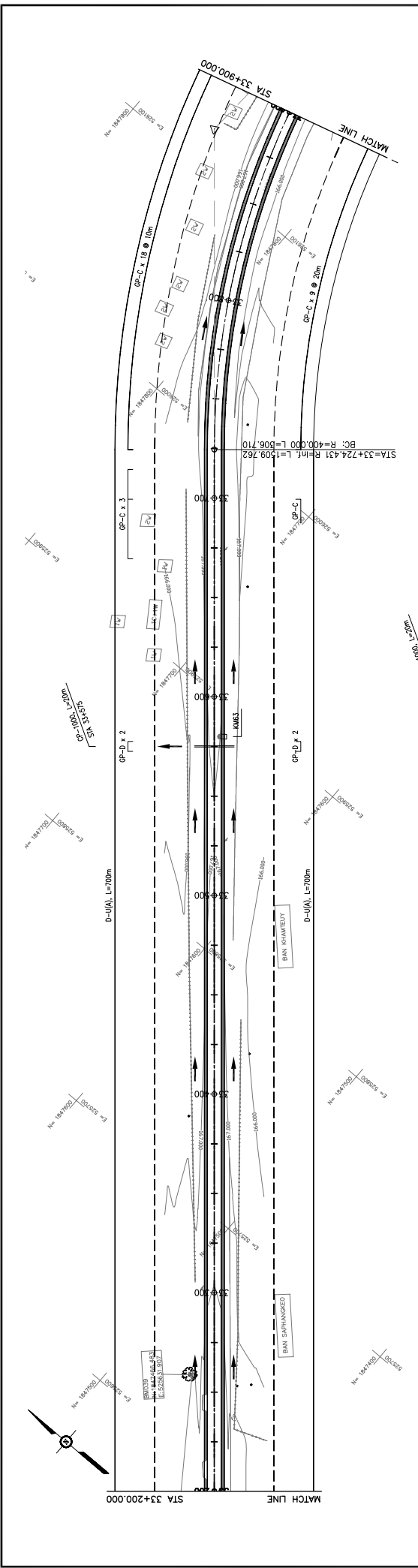
REV. No.	DATE	DESCRIPTION

SCALE: H=1:2,000 V=1:200	DRAWING No. C-107
-----------------------------	-------------------

THE PROJECT FOR IMPROVEMENT OF NATIONAL ROAD No.9 AS EAST-WEST ECONOMIC CORRIDOR IN LAO PDR	MINISTRY OF PUBLIC WORKS AND TRANSPORT LAO PEOPLE'S DEMOCRATIC REPUBLIC
--	--

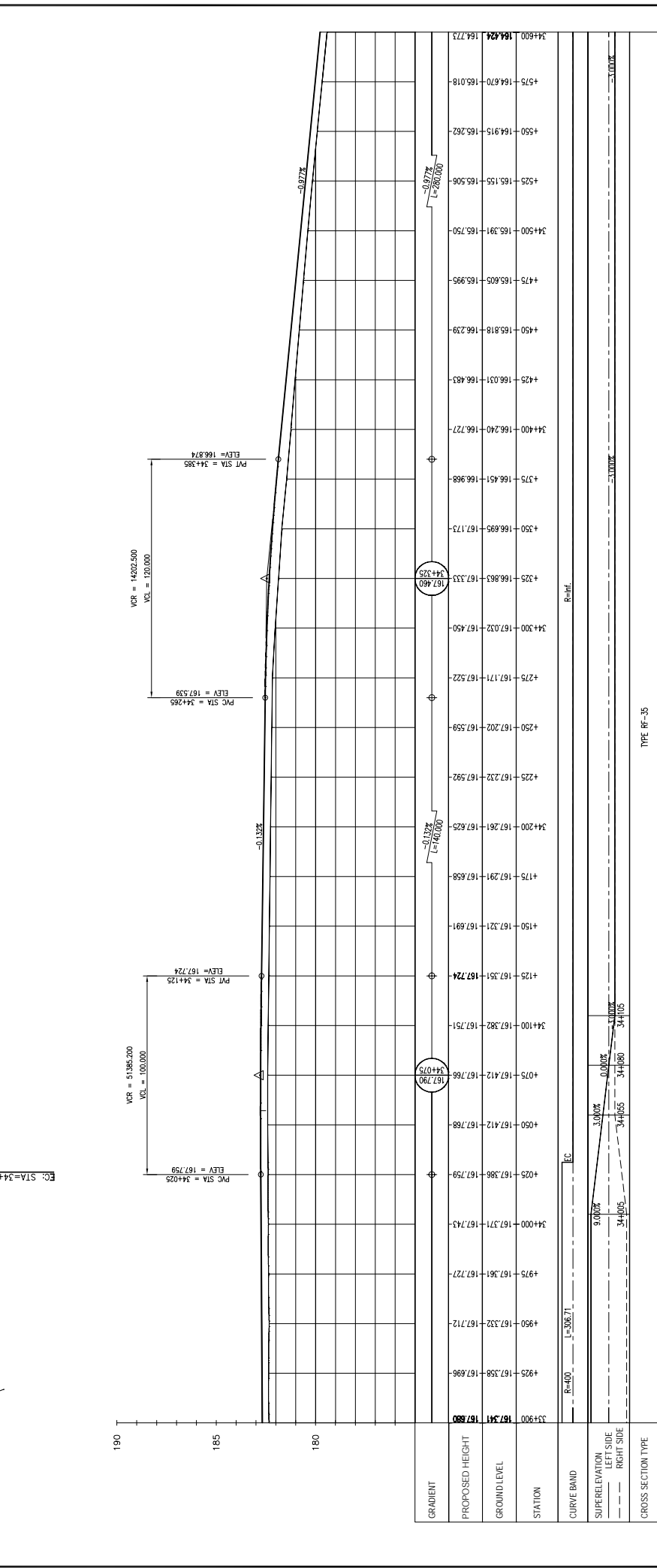
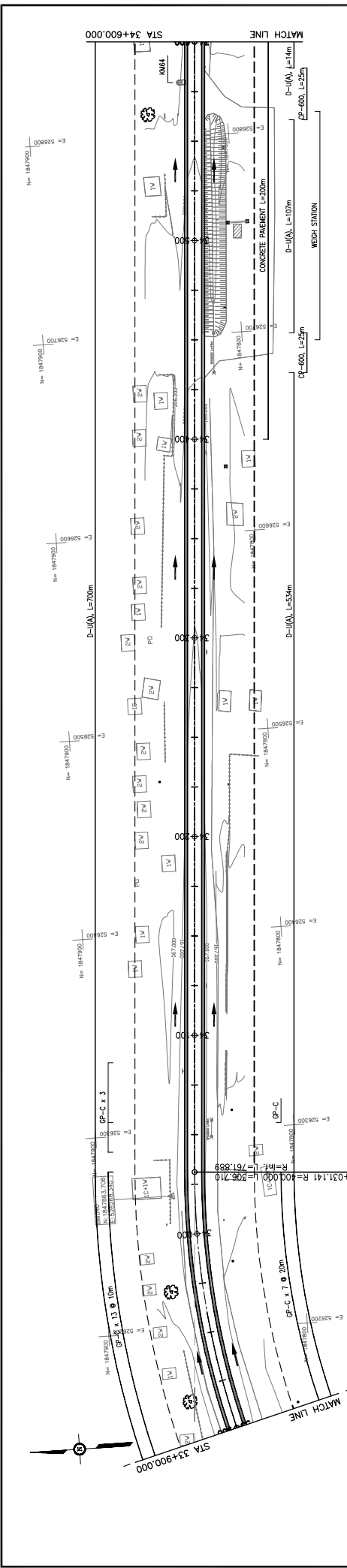
JAPAN INTERNATIONAL COOPERATION AGENCY THE CONSORTIUM OF ORIENTAL CONSULTANTS CO., LTD. INTERNATIONAL DEVELOPMENT CENTER OF JAPAN	SIGNATURE	NAME	TITLE	APPROVED BY

DRAWING TITLE PLAN & PROFILE SECTION 1: STA 32+500 - 33+200	TYPE RR-30	TYPE RR-35
---	------------	------------



TYPE: RF-35

JAPAN INTERNATIONAL COOPERATION AGENCY THE CONSORTIUM OF ORIENTAL CONSULTANTS CO., LTD.		INTERNATIONAL DEVELOPMENT CENTER OF JAPAN	
TITLE	NAME	SIGNATURE	
PREPARED BY			
CHECKED BY			
APPROVED BY			
THE PROJECT FOR IMPROVEMENT OF NATIONAL ROAD No.9 AS EAST-WEST ECONOMIC CORRIDOR IN LAO PDR			
MINISTRY OF PUBLIC WORKS AND TRANSPORT LAO PEOPLE'S DEMOCRATIC REPUBLIC			
DRAWING TITLE PLAN & PROFILE SECTION 1: STA 33+200 - 33+900			
REV. No.	DATE	DESCRIPTION	SCALE:
1			H=1:2,000 V=1:200
2			DRAWING No.
3			C-108



STATION	ELEVATION	PROPOSED GRADE	GROUND LEVEL	GRADIENT
33+900	176.800			
34+025	184.424			
34+050	184.915			
34+075	185.155			
34+100	185.391			
34+125	185.605			
34+150	185.818			
34+175	186.031			
34+200	186.240			
34+225	186.451			
34+250	186.693			
34+275	186.935			
34+300	187.171			
34+325	187.403			
34+350	187.633			
34+375	187.863			
34+400	188.093			
34+425	188.323			
34+450	188.553			
34+475	188.783			
34+500	189.013			
34+525	189.243			
34+550	189.473			
34+575	189.703			
34+600	189.933			

JAPAN INTERNATIONAL COOPERATION AGENCY
 THE CONSORTIUM OF
ORIENTAL CONSULTANTS CO., LTD.
 INTERNATIONAL DEVELOPMENT CENTER OF JAPAN

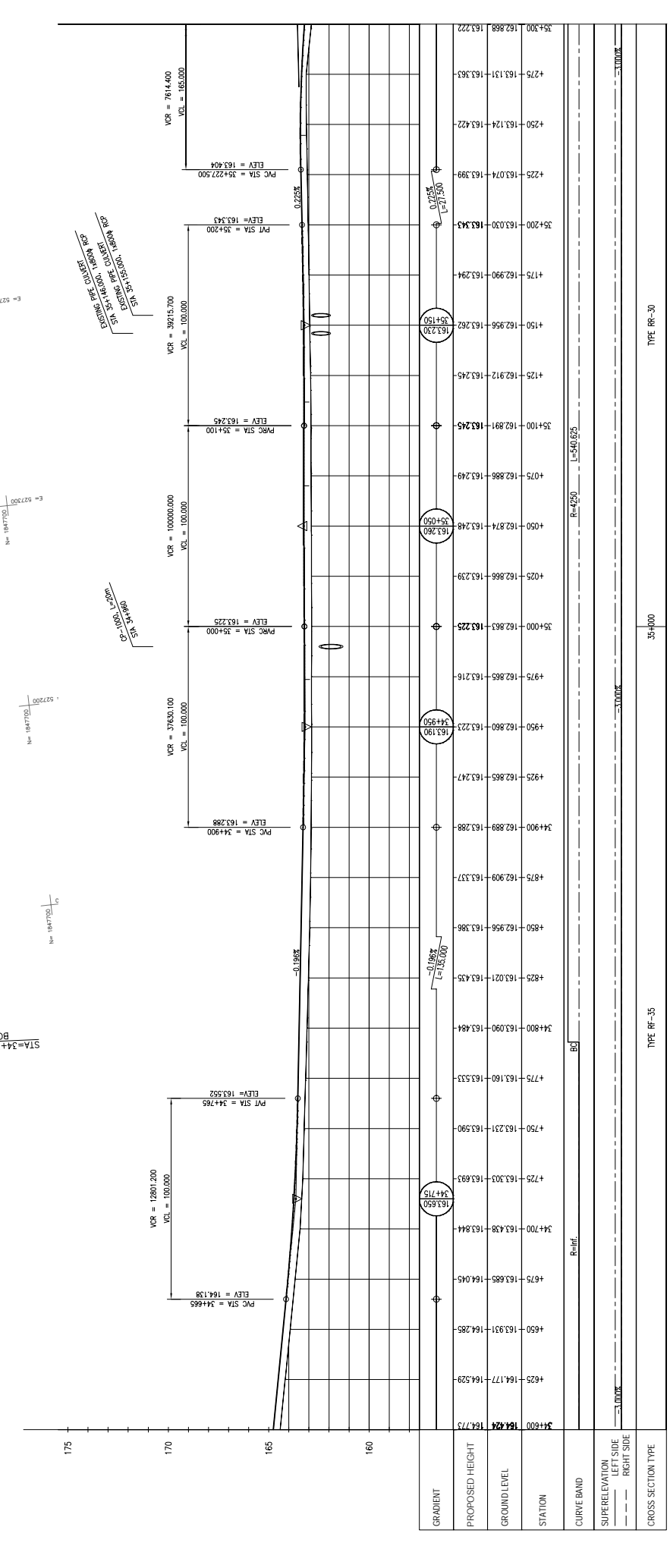
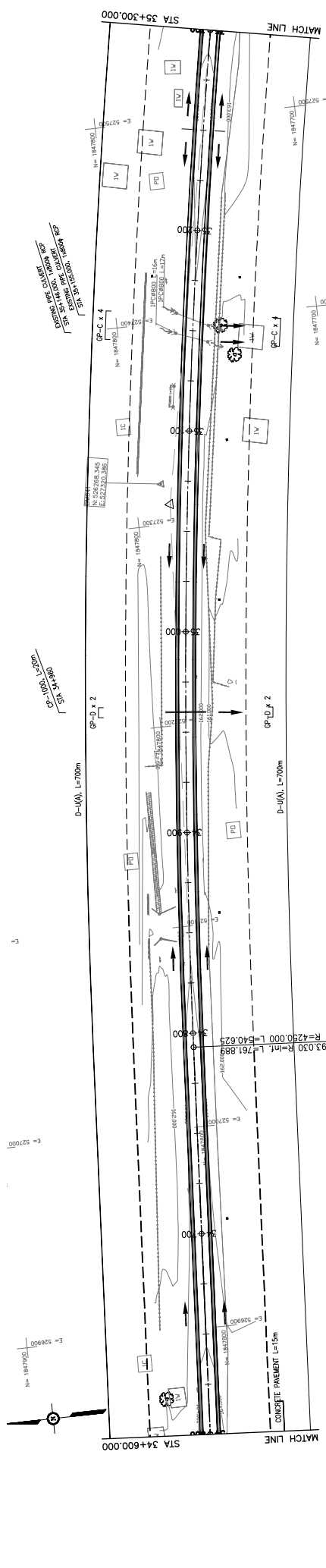
MINISTRY OF PUBLIC WORKS AND TRANSPORT
LAO PEOPLE'S DEMOCRATIC REPUBLIC

THE PROJECT FOR IMPROVEMENT OF NATIONAL ROAD No.9
AS EAST-WEST ECONOMIC CORRIDOR IN LAO PDR

PLAN & PROFILE
SECTION 1: STA 33+900 - 34+600

SCALE: H=1:2,000 V=1:200	DESCRIPTION	DATE	REV. No.
DRAWING No.			

C-109



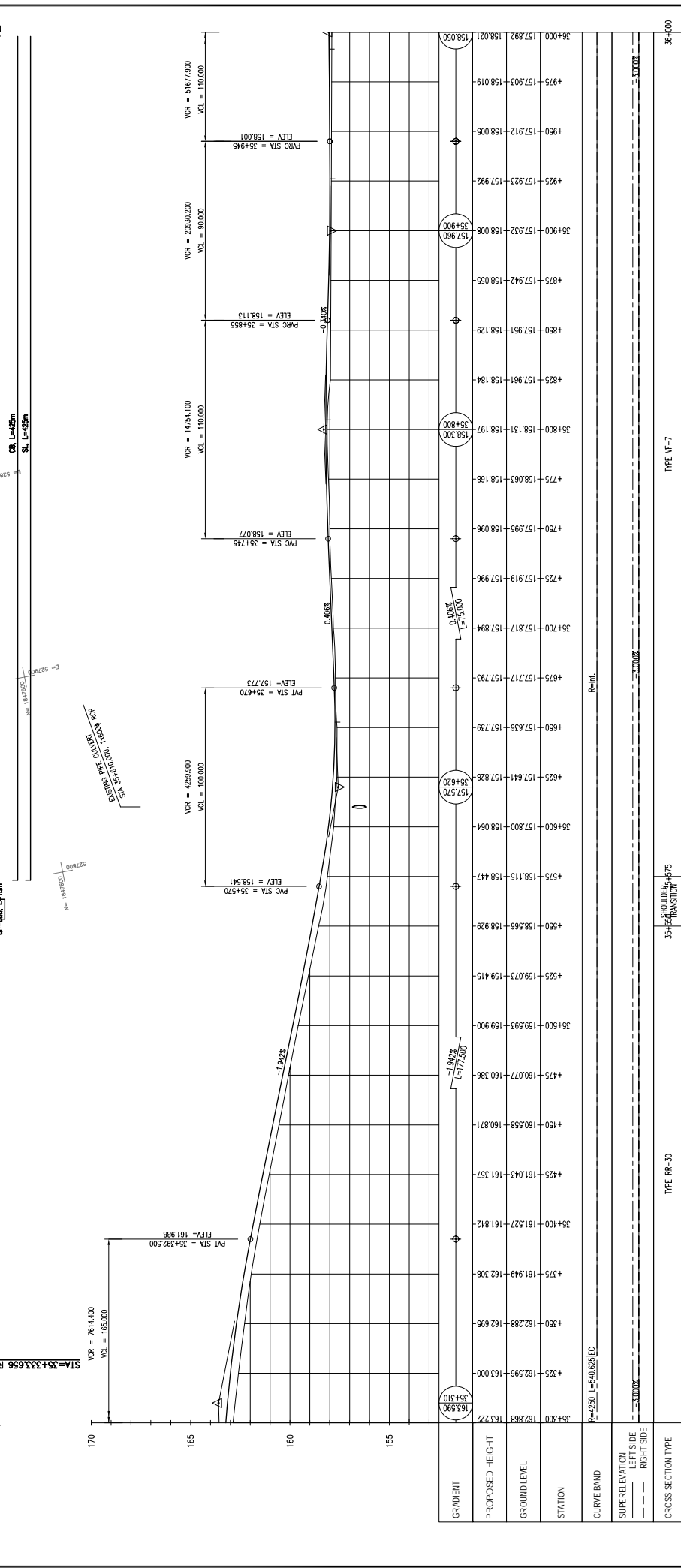
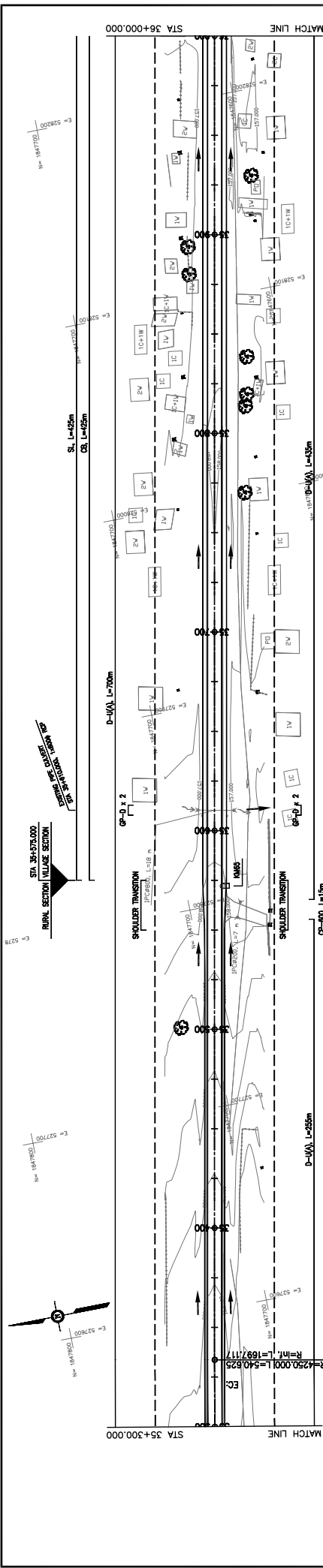
REV No.	DATE	DESCRIPTION	SCALE:
1			H=1:2,000
2			V=1:200

THE PROJECT FOR IMPROVEMENT OF NATIONAL ROAD No.9
 AS EAST-WEST ECONOMIC CORRIDOR IN LAO PDR
 DRAWING TITLE: **PLAN & PROFILE**
 STA. 34+600.000 TO STA. 35+300.000

MINISTRY OF PUBLIC WORKS AND TRANSPORT
LAO PEOPLE'S DEMOCRATIC REPUBLIC

JAPAN INTERNATIONAL COOPERATION AGENCY
 THE CONSORTIUM OF
ORIENTAL CONSULTANTS CO., LTD.
INTERNATIONAL DEVELOPMENT CENTER OF JAPAN

C-110




PLAN & PROFILE
SECTION 1: STA. 35+300 - 36+000

REV. No.	DATE	DESCRIPTION



SCALE: H=1:2,000
V=1:200

DRAWING No. C-111

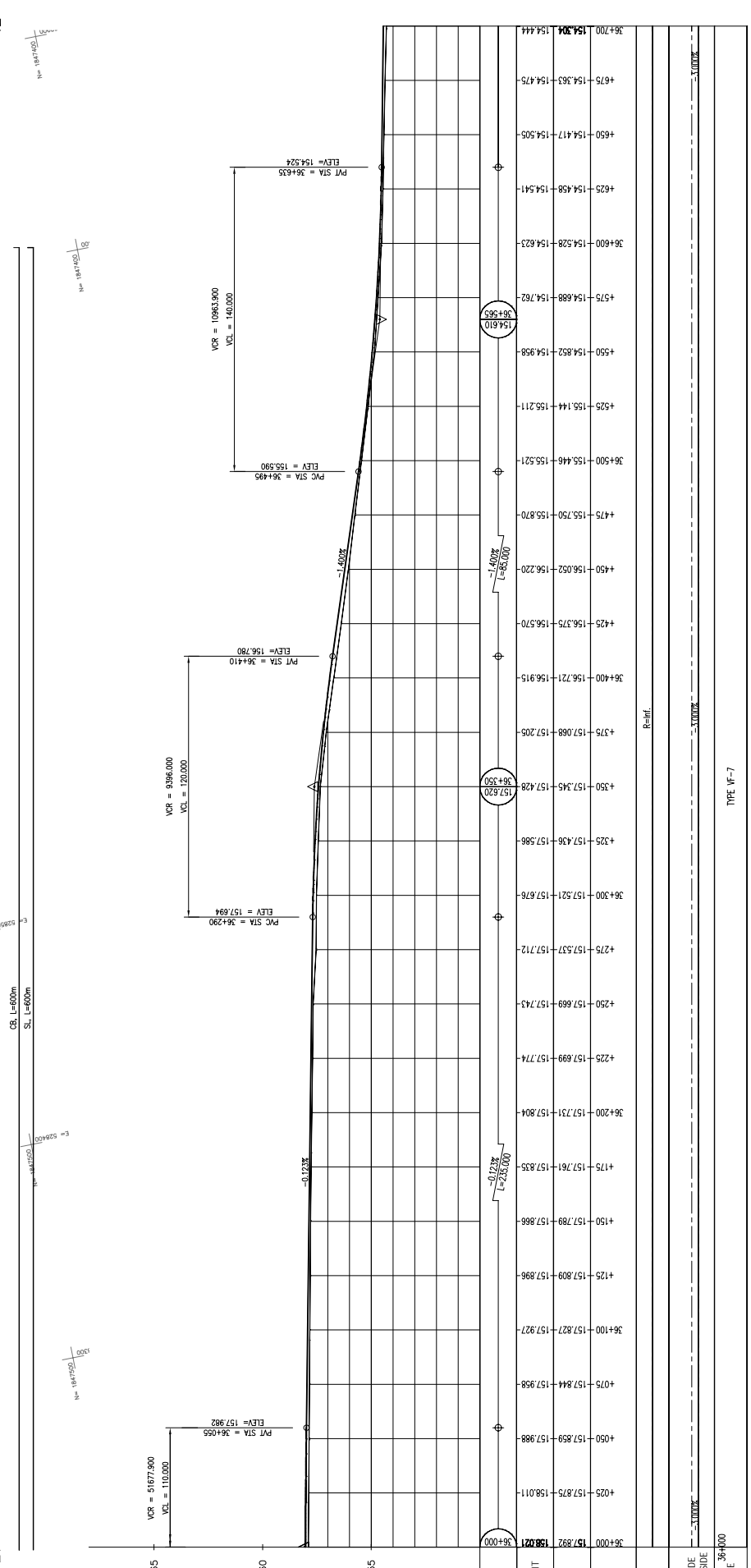
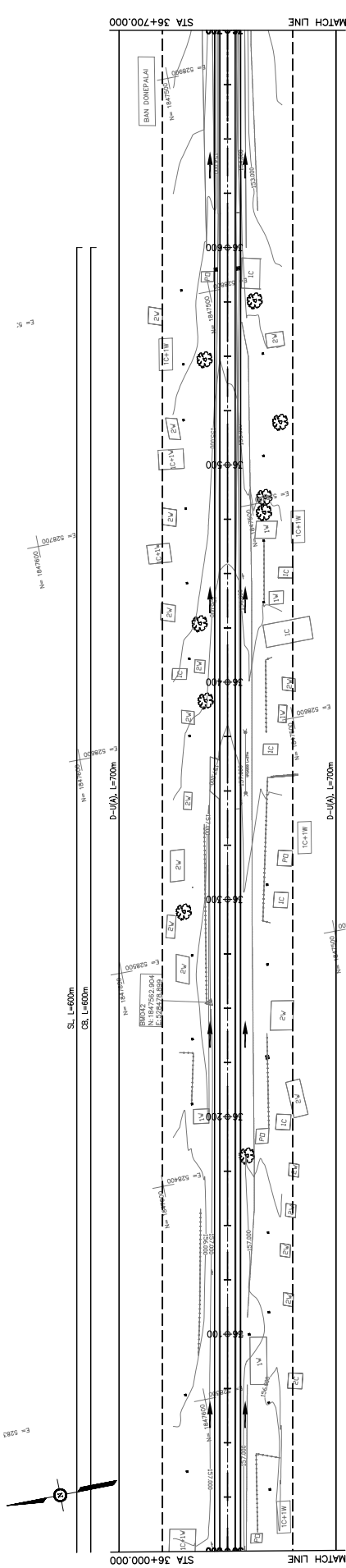
MINISTRY OF PUBLIC WORKS AND TRANSPORT
LAO PEOPLE'S DEMOCRATIC REPUBLIC



JAPAN INTERNATIONAL COOPERATION AGENCY
THE CONSORTIUM OF
ORIENTAL CONSULTANTS CO., LTD.
INTERNATIONAL DEVELOPMENT CENTER OF JAPAN

TITLE	NAME	SIGNATURE
PREPARED BY		
CHECKED BY		
APPROVED BY		



STATION	ELEVATION
36+000	157.892
36+100	157.827
36+200	157.731
36+300	157.521
36+400	156.915
36+500	155.446
36+600	154.623
36+700	154.444

MINISTRY OF PUBLIC WORKS AND TRANSPORT
LAO PEOPLE'S DEMOCRATIC REPUBLIC

SCALE: H=1:2,000
V=1:200

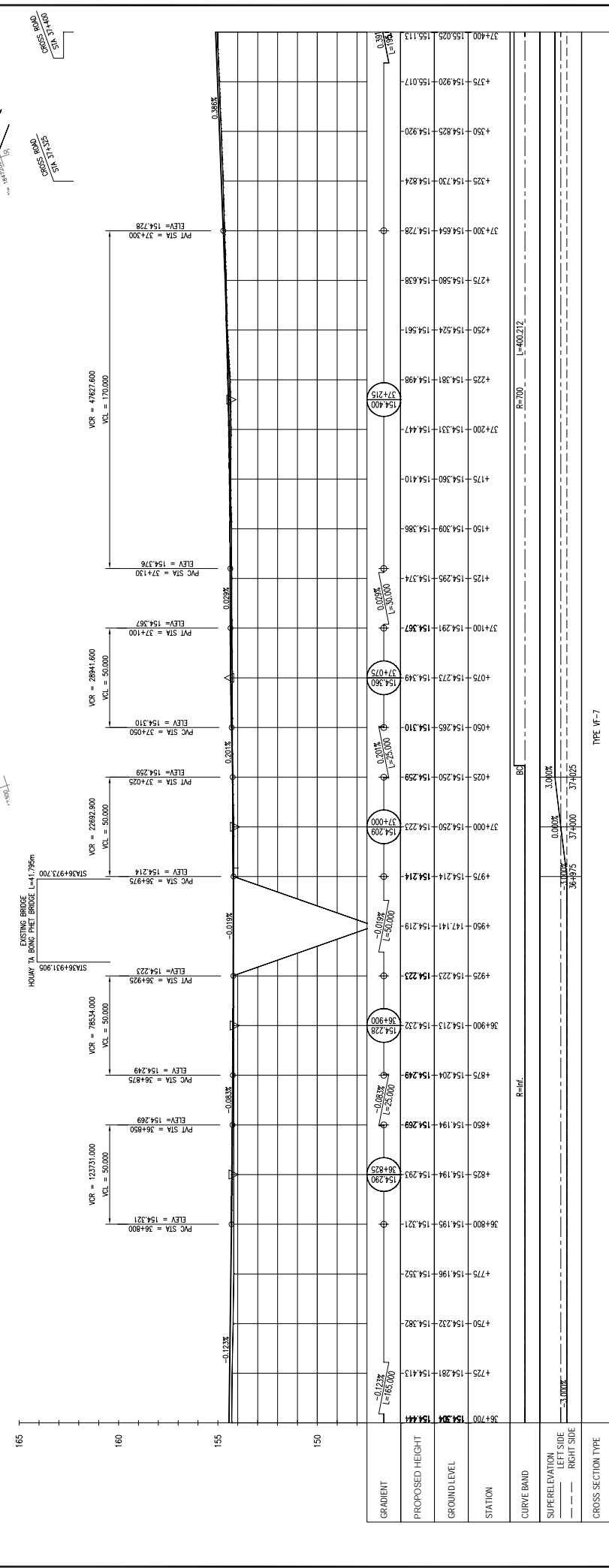
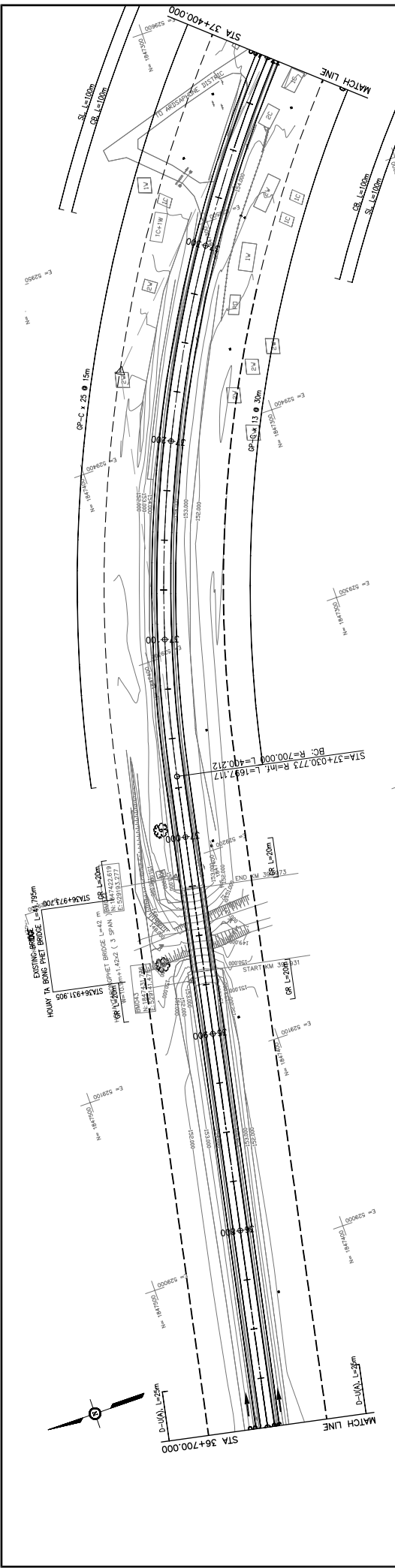
THE PROJECT FOR IMPROVEMENT OF NATIONAL ROAD No.9
AS EAST-WEST ECONOMIC CORRIDOR IN LAO PDR

REV. No.	DATE	DESCRIPTION

TITLE	NAME	SIGNATURE
PREPARED BY		
CHECKED BY		
APPROVED BY		

PLAN & PROFILE
SECTION 1: STA 36+000 - 36+700

DRAWING No. **C-112**



GRADIENT	36+700	154.304	154.441	427.00	1:15.4
PROPOSED HEIGHT	36+700	154.304	154.441	427.00	1:15.4
GROUND LEVEL	36+700	154.194	154.293	36+825	1:15.4
STATION	36+800	154.195	154.321	425	1:15.4
CURVE BAND	36+800	154.196	154.352	425	1:15.4
SUPERELEVATION	36+800	154.196	154.352	425	1:15.4
CROSS SECTION TYPE	36+800	154.196	154.352	425	1:15.4

JAPAN INTERNATIONAL COOPERATION AGENCY
THE CONSORTIUM OF
ORIENTAL CONSULTANTS CO., LTD.
INTERNATIONAL DEVELOPMENT CENTER OF JAPAN

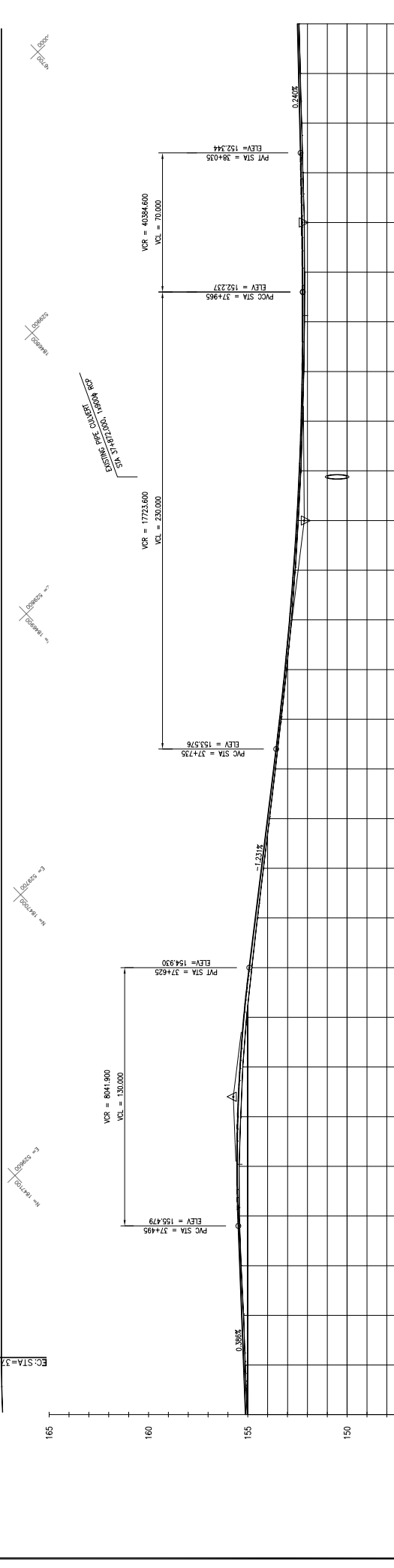
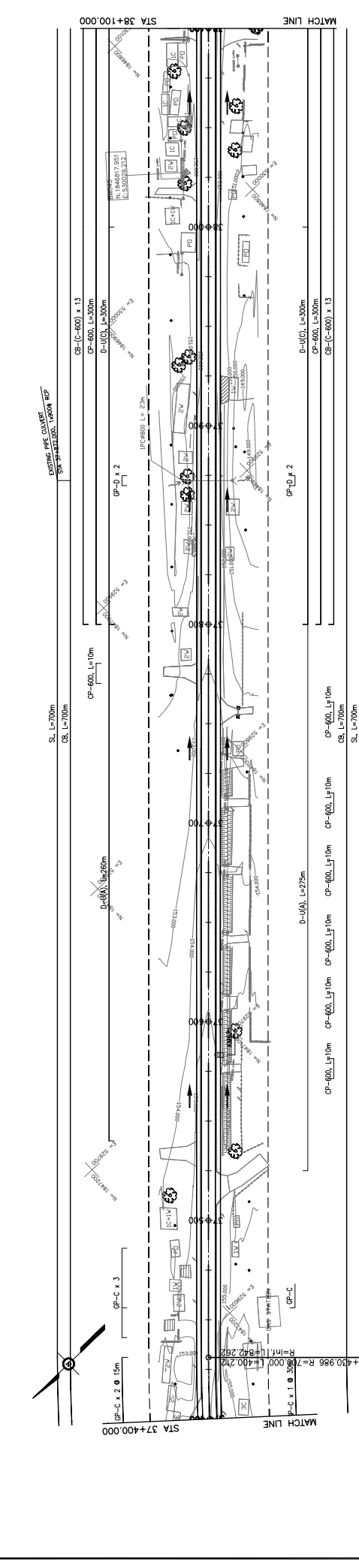
MINISTRY OF PUBLIC WORKS AND TRANSPORT
LAO PEOPLE'S DEMOCRATIC REPUBLIC

REV. No.	DATE	DESCRIPTION

SCALE: H=1:2,000 V=1:200
DRAWING No. C-113

**THE PROJECT FOR IMPROVEMENT OF NATIONAL ROAD No.9
AS EAST-WEST ECONOMIC CORRIDOR IN LAO PDR**

PLAN & PROFILE
SECTION 1: STA 36+700 - 37+400



STATION	PROPOSED HEIGHT	GROUND LEVEL	GRADIENT
37+400	155.025	155.113	
4+25	155.126	155.210	
4+50	155.207	155.306	
4+75	155.335	155.402	
37+500	155.426	155.497	
4+25	155.432	155.539	
4+50	155.535	155.603	
4+75	155.247	155.390	
37+600	155.062	155.199	
4+25	154.793	154.930	
4+50	154.509	154.622	
4+75	154.210	154.314	
37+700	153.909	154.007	
4+25	153.609	153.699	
4+75	153.318	153.397	
37+800	152.799	152.895	
4+25	152.614	152.696	
4+50	152.456	152.533	
4+75	152.322	152.405	
37+900	152.242	152.313	
4+25	152.178	152.295	
4+50	152.142	152.233	
4+75	152.137	152.245	
38+000	152.147	152.275	
4+25	152.222	152.321	
4+50	152.289	152.380	
4+75	152.356	152.440	
38+100	152.417	152.500	

TYPE: (P-7)

		JAPAN INTERNATIONAL COOPERATION AGENCY THE CONSORTIUM OF ORIENTAL CONSULTANTS CO., LTD. INTERNATIONAL DEVELOPMENT CENTER OF JAPAN		MINISTRY OF PUBLIC WORKS AND TRANSPORT LAO PEOPLE'S DEMOCRATIC REPUBLIC		THE PROJECT FOR IMPROVEMENT OF NATIONAL ROAD No.9 AS EAST-WEST ECONOMIC CORRIDOR IN LAO PDR		SCALE: H=1:2,000 V=1:200 DRAWING NO.: C-114	
TITLE	NAME	SIGNATURE	DATE	DESCRIPTION	REV. No.	DATE	DESCRIPTION	REV. No.	DATE
PREPARED BY									
CHECKED BY									
APPROVED BY									

DRAWING TITLE: **PLAN & PROFILE**
SECTION 1: STA. 37+400 - 38+100