

Appendix

Appendix-1 Member List of the Study Team

(1) 1st Field Study

Assignment	Name	Position
Team Leader	Yoshiki OMURA	JICA Senior Advisor (Water Supply Development)
Planning Management	Miki INAOKA	Water Resources Management Division I, Global Environment Department, JICA
Chief Consultant/Water Supply Planning	Tadao FUNAMOTO	NJS Consultants Co., Ltd.
Water Supply System Planning/Water Purification/Water Quality	Toru YAGI	
Operation and Maintenance Planning	Shinichi OSAKA	
Construction and procurement Planning/Cost Estimation	Takashi WATANABE	

(2) 2nd Field Study

Assignment	Name	Position
Team Leader	Yoshiki OMURA	JICA Senior Advisor (Water Supply Development)
Planning Management	Ryosuke ISOBE	Assistant Director, Water Resources Management Division I, Global Environment Department, JICA
Chief Consultant/Water Supply Planning	Tadao FUNAMOTO	NJS Consultants Co., Ltd.
Water Supply System Planning/Water Purification/Water Quality	Toru YAGI	
Operation and Maintenance Planning	Shinichi OSAKA	
Construction and procurement Planning/Cost Estimation	Takashi WATANABE	
Mechanical/ Electrical	Akira MIURA	
Facility Plan/Civil Structure	Yoshiya MAEDA	
Network Analysis	Daisuke YASHIRO	
Environmental/Social Considerations	Kenji TAKAYANAGI	
Water Supply System Planning/Water Purification/Water Quality (2)	Koichi YONEDA	
Mechanical/ Electrical (2)	Akira HASEBE	

(3) Explanation of DBD Report

Assignment	Name	Position
Team Leader	Yoshiki OMURA	JICA Senior Advisor (Water Supply Development)
Planning Management	Yushin NAKAO	Training and Partnership Program Division, JICA
Chief Consultant/Water Supply Planning	Tadao FUNAMOTO	NJS Consultants Co., Ltd.
Water Supply System Planning/Water Purification/Water Quality	Toru YAGI	

Appendix-2 Study Schedule

(1) 1st Field Study

Date			JICA		Consultants										
			Mr. Omura	Ms. Inaoka	Mr. Funamoto	Mr. Yagi	Mr. Osaka	Mr. Watanabe							
1	2/24	T	CMB	NTR-SIN-CMB		Preparation									
2	2/25	F	Explanation and Discussion on ICR with NWSDB												
3	2/26	S	Internal meeting												
4	2/27	S	Move for Anuradhapura												
5	2/28	M	Move for Vavuniya Discussion with NWSDB Northern Office Move for Killinochchi Discussion with Killinochchi District Secretariat, Site Visiting												
			Move for Anuradhapura			Move for Vavuniya	Move for Anuradhapura								
6	3/1	T	Move for Colombo, Internal Meeting			Field Survey (Existing Facilities)	Move for Colombo								
7	3/2	W	Discussion on ICR with NWSDB				Discussion on ICR with NWSDB								
8	3/3	T	Discussion on MM with NWSDB, ERD, Ministry of Finance and Planning				Discussion on O&M with NWSDB								
9	3/4	F	Sign on MM												
10	3/5	S	Move for another study	CMB-SIN-NTR	Review of collected information	Move for Colombo	Review of collected information								
11	3/6	S	Review of collected information												
12	3/7	M	Discussion on current situation and issues with NWSDB												
13	3/8	T	<ul style="list-style-type: none"> Existing Facilities Future provision Prior water supply plans Base Map Preparation Collection of information on existing plans and initial cost and O&M cost 												
14	3/9	W													
15	3/10	T													
16	3/11	F													
17	3/12	S							Internal meeting, Review of collected information						
18	3/13	S							Preparation	Move for Vavuniya					
19	3/14	M							Discussion on current situation and issues with NWSDB						
20	3/15	T							Field survey in Killinochchi			Discussion on O&M with NWSDB			
21	3/16	W							Field survey in Killinochchi						
22	3/17	T							Preparation	Move for Colombo			NTR-SIN-CMB		
23	3/18	F	TV Conference (JICAHQ—JICA Sri Lanka)												
24	3/19	S	Internal meeting, Review of collected information												
25	3/20	S	Review of collected information, Report preparation												
26	3/21	M	Discussion with NWSDB						Information collection on local contractors						
27	3/22	T	Report preparation												
28	3/23	W	Plenary meeting with NWSDB												
29	3/24	T	Internal meeting, Review of collected information												
30	3/25	F	Preparation	CMB - SIN - NTR		Preparation	Cost information								
31	3/26	S	Preparation				Cost information								
32	3/27	S	Preparation				Cost information								
33	3/28	M	Discussion with NWSDB				Discussion with NWSDB								
34	3/29	T	Report preparation				Report preparation								
35	3/30	W	Report preparation				Report preparation								
36	3/31	T	JICA Office				CMB - SIN - NTR								
37	4/1	F	CMB - SIN - NTR												

(2) 2nd Field Study

Date	Day	JICA				Consultants								
		Mr. Omura	Mr. Isobe	Mr. Funamoto	Mr. Yagi	Mr. Osaka	Mr. Watanabe	Mr. Miura	Mr. Maeda	Mr. Yashiro	Mr. Takayanagi	Mr. Yoneda	Mr. Hasebe	
1	5/8	NTR-SIN-CMB												
2	5/9	Discussion with JICA Office, ERD and NWSDB												
3	5/10	Discussion with NWSDB												
4	5/11	Discussion with NWSDB												
5	5/12	Discussion on MM with ERD and NWSDB				Move for Vavuniya			NTR-SIN-CMB					
6	5/13	Sign on MM				Field Survey			Move for Vavuniya					
7	5/14	CMB-SIN-NTR		Review of Data	Field Survey			Field Survey						
8	5/15			Review of Data	Field Survey			Field Survey						
9	5/16			Discuss with NWSDB	Field Survey			Field Survey						
10	5/17			Review of Data	Field Survey			Field Survey						
11	5/18			Review of Data	Move for Colombo			Move for Colombo	NTR-SIN-CMB					
12	5/19			Discuss with NWSDB				Discuss with NWSDB	Discuss with NWSDB	Discuss with NWSDB				
13	5/20			Discuss with NWSDB				Discuss with NWSDB	Discuss with NWSDB	Prepare Social Survey				
14	5/21			Review of Data				Review of Data	Review of Data	Prepare Social Survey				
15	5/22			Review of Data	NTR-SIN-CMB			Review of Data	Review of Data	Prepare Social Survey	NTR-SIN-CMB			
16	5/23			Discuss with NWSDB	Discuss with NWSDB			Review of Data	Review of Data	Prepare Social Survey	Review of Data			
17	5/24			Discuss with NWSDB	Move for Vavuniya			Review of Data	Review of Data	Environmental Data	Review of Data			
18	5/25			Discuss with NWSDB	Field Survey			Review of Data	Review of Data	Field Survey	Review of Data			
19	5/26			Discuss with NWSDB	Field Survey			Review of Data	Review of Data	Field Survey	Review of Data			
20	5/25			Discuss with NWSDB	Field Survey			Move for Vavuniya	Move for Vavuniya	Environmental Data	Move for Vavuniya			
21	5/28			Review of Data	Field Survey			Field Survey	Field Survey	Environmental Data	Field Survey			
22	5/29			Move for Vavuniya	Move for Vavuniya			Field Survey	Field Survey	Move for Vavuniya	Field Survey			
23	5/30			Discuss with NWSDB	Discuss with NWSDB			Field Survey	Field Survey	Discuss with Others	Field Survey			
24	5/31			Discuss with NWSDB	Discuss with NWSDB			Field Survey	Field Survey	Discuss with NWSDB	Field Survey			
25	6/1			Move for Colombo	Move for Colombo		NTR-SIN-CMB	Review of Data	Review of Data	Move for Colombo	Field Survey			
26	6/2			Review of Data	Review of Data			Review of Data	Review of Data	Review of Data	Field Survey			
27	6/3			Internal Meeting	Review of Data			Internal Meeting	Move for Colombo	Move for Colombo	Internal Meeting	Move for Colombo		
28	6/4			Review of Data	Review of Data			Review of Data	Review of Data	Review of Data	Review of Data	Review of Data		
29	6/5			Review of Data	Review of Data	Review of Data	Review of Data	Review of Data	Review of Data	Review of Data	Review of Data	Review of Data		
30	6/6			Discuss with NWSDB	Discuss with NWSDB	Discuss with NWSDB	Review of Data	Review of Data	Review of Data	Review of Data	Review of Data	Review of Data		
31	6/7			Discuss with NWSDB	Discuss with NWSDB	Discuss with NWSDB	Review of Data	Review of Data	Review of Data	Review of Data	Review of Data	Review of Data		
32	6/8			Discuss with NWSDB	Discuss with NWSDB	Discuss with NWSDB	Review of Data	Review of Data	Review of Data	Review of Data	Move for Vavuniya	Review of Data		
33	6/9			Discuss with NWSDB	Discuss with NWSDB	Discuss with NWSDB	Review of Data	Review of Data	Review of Data	Discuss with Others	Review of Data			
34	6/10			Review of Data	Review of Data	Review of Data	Review of Data	Review of Data	Review of Data	Discuss with Others	Review of Data			
35	6/11			Review of Data	Review of Data	Review of Data	Review of Data	NTR-SIN-CMB	Review of Data	Review of Data	Discuss with Others	CMB - SIN - NTR	NTR-SIN-CMB	
36	6/12			Move for Vavuniya	Move for Vavuniya	Move for Vavuniya	Internal Meeting	Move for Vavuniya	Internal Meeting	Move for Vavuniya	Discuss with Others		Move for Vavuniya	
37	6/13			Discuss with NWSDB	Discuss with NWSDB	Discuss with NWSDB	Review of Data	Discuss with NWSDB	Discuss with NWSDB	Discuss with NWSDB	Discuss with NWSDB		Discuss with NWSDB	
38	6/14			Field Survey	Field Survey	Field Survey	Review of Data	Field Survey	Field Survey	Field Survey	Move for Colombo		Field Survey	
39	6/15			Move for Colombo	Move for Colombo	Field Survey	Review of Data	Field Survey	Field Survey	Field Survey	Review of Data		Field Survey	
40	6/16			Meeting with JICA	Meeting with JICA	Move for Colombo	Review of Data	Move for Colombo	Move for Colombo	Move for Colombo	Review of Data		Move for Colombo	
41	6/17			CMB - SIN - NTR	Discuss with NWSDB	Review of Data	Review of Data	Review of Data	Review of Data	Review of Data	Review of Data		Review of Data	
42	6/18				Review of Data	Review of Data	Review of Data	Review of Data	NTR-SIN-CMB	Discuss with NWSDB	Review of Data		Review of Data	
43	6/19				Review of Data	Review of Data	Review of Data	Review of Data		Discuss with NWSDB	Move for Jaffna		Review of Data	
44	6/20				Discuss with NWSDB	Review of Data	Review of Data	Review of Data		Discuss with NWSDB	Discuss with Others		Review of Data	
45	6/21				Discuss with NWSDB	Review of Data	Review of Data	Review of Data		Discuss with NWSDB	Discuss with Others		Review of Data	
46	6/22				Review of Data	Review of Data	Review of Data	Review of Data		Review of Data	Discuss with Others		Review of Data	
47	6/23				Review of Data	Review of Data	Review of Data	Review of Data		Review of Data	Move for Colombo		Review of Data	
48	6/24				Meeting with JICA	Meeting with JICA	Meeting with JICA	Meeting with JICA		Meeting with JICA	Meeting with JICA		Meeting with JICA	
49	6/25				CMB - SIN - NTR	Review of Data	NTR-SIN-CMB	NTR-SIN-CMB		NTR-SIN-CMB	NTR-SIN-CMB		NTR-SIN-CMB	

(3) Explanation of DBD Report

Date			JICA		Consultants	
			Mr. Omura	Mr. Nakao	Mr. Funamoto	Mr. Yagi
1	10/6	T	/		NTR-SIN-CMB	NTR-SIN-CMB
2	10/7	F			Discussion with JICA Office	
3	10/8	S			Document Preparation	
4	10/9	S	NTR-SIN-CMB	NTR-SIN-CMB	Document Preparation	
5	10/10	M	Discussion with JICA Office Discussion with NWSD Discussion with ERD Discussion with MWSD			
6	10/11	T	Discussion with NWSD			
7	10/12	W	Discussion with NWSD Discussion with ERD			
8	10/13	T	Discussion with NWSD Sign on MM			
9	10/14	F	Discussion with ERD Sign on MM Report to Japanese Embassy Discussion with JICA Office			
10	10/15	S	CMB	CMB-SIN-NTR	CMB-SIN-NTR	CMB-SIN-NTR

Appendix-3 List of Parties Concerned in Sri Lanka

(1) Ministry of Finance and Planning

Mr. Mapa Pathiarana	Director General, External Resources Department
Dr. B.M.S. Batagoda	Director General, Department of National Planning
Mr. S.S. Mudalige	Director, Department of National Planning
Ms. Rumeshe Hewawasam	Assistant Director, Department of National Planning

(2) Ministry of Water Supply and Drainage

Mr. A Abeygunasekara	Secretary
----------------------	-----------

(3) National Water Supply and Drainage Board (NWSDB)

Mr. Karunasena Hettiarachchi	Chairman
Mr. K.L.L. Premanath	General Manager
Mr. D N J Fernando	Additional General Manager
Ms. P.N.S. Yapa	Additional General Manager (Northern & Central)
Mr. Duleep Goonewardene	Deputy General Manager (North)
Mr. D.S.D. Jayasiriwardene	Deputy General Manager (Planning & Designs)
Mr. M.M. Umarlebbe	Assistant General Manager (Japanese Project Unit)
Mr. R. B. Thavendrakumar	Regional Manager (NR-Jaffna)
Mr. T. Barathithasa	General Manager of ADB Project
Mr. U. Ratnapala	Assistant General Manager (Planning & Designs)
Mr. Thirunavukkarasu	Assistant General Manager (North)
Mr. R.R.P.N. Rathnayake	Specialist (Water Treatment)
Mr. S. Saravanakugan	Engineer (Planning & Designs)
Mr. Imran M Saheer	Engineer (Japanese Project Unit)
Mr. Suveenthan	Engineer (NR-Jaffna)

(4) Killinochchi District Secretariat

Ms. R. Ketheeswaran	District Secretary
Mr. S. Srinivasa	Additional District Secretary

(5) Road Development Authority (RDA)

Mr. T. K. Ilangeern	Chief Engineer
Mr. Sivagauesan	Project Officer (A9 Project)
Mr. Thayaparan	Project Engineer (A9 Project)

(6) Central Engineering Consultancy Bureau (CECB)

Mr. Dinusha Gunawardana	Site Engineer (A9 Road)
Mr. M.D. Vaseehara	Site Engineer (A9 Road)
P. Chandrsiri	Resident Engineer (A9 Road)

(7) Central Environmental Authority (CEA)

Ms. Vijitha Sathiyakuumar	Assistant Director (Northern Provincial Office)
---------------------------	---

(8) Ceylon Electric Board (CEB)

Mr. T Gugaraj	CEB Killinochchi Office
---------------	-------------------------

(9) Land Mine Removal Office

Mr. R. Rajkumar	Land Mine Removal Information Technology Officer
-----------------	--

(10) ADB

Mr. Mookiah Thiruchelvam	Project Implementation Officer
--------------------------	--------------------------------

Appendix-4 Minuets of Meetings / Minutes of Discussions

4-1 Minutes of Meetings on 3 March 2011

**THE MINUTES OF MEETINGS
ON
THE MISSION FOR THE PREPARATORY SURVEY
ON
REHABILITATION OF KILLINOCHCHI WATER SUPPLY SCHEME
IN
DEMOCRATIC SOCIALIST REPUBLIC OF SRI LANKA**


In response to a request from the Government of the Democratic Socialist Republic of Sri Lanka (hereinafter referred to as "GoSL"), the Government of Japan decided to conduct a Preparatory Survey on Rehabilitation of Killinochchi Water Supply Scheme (hereinafter referred to as "the Project").

JICA sent to Sri Lanka the Preparatory Survey Team (hereinafter referred to as "the JICA Mission") which is headed by Mr Yoshiki Omura, Senior Advisor, JICA, and is scheduled to stay in the country from 25 February 2011 to 31 March 2011.


The JICA Mission held discussions with the officials concerned of GoSL and conducted a field survey at the survey area.

In the course of discussions and field survey, both parties confirmed the main items described in the attached sheets. The JICA Mission will proceed to further works and prepare the preparatory survey report.

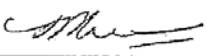
Colombo, 3 March 2011



Mr. M P D U K Mapa Pathirana
Director General
Department of External Resources
Ministry of Finance and Planning



Mr. Yoshiki Omura
Leader
The Preparatory Survey Team
Japan International Cooperation Agency
(JICA)



Mr. Karunasena Hettiarachchi
Chairman
National Water Supply and Drainage Board

I. OBJECTIVES OF THE PROJECT

The Objective of the Project is the rehabilitation of the existing water supply scheme to bring it back to operational level.

II. PROJECT SITES

The site of the Project is located in Killinochchi as shown in Annex-1.

III. RESPONSIBLE AND IMPLEMENTING AGENCY

The Responsible Organization is Ministry of Water Supply and Drainage.

The Implementing Agency is the National Water Supply and Drainage Board (NWSDB).
The organization chart is shown in Annex-2.

II. MAJOR ISSUES DISCUSSED

The Major issues discussed are described in Annex-3.

Both sides confirmed that appropriateness of the request shall be examined in accordance with further studies and analysis in Japan and the final components of the Project would be decided by the Japanese side after consultation with the GoSL.

III. JAPAN'S GRANT AID SCHEME

GoSL understands the Japan's Grant Aid Scheme explained by the JICA Mission as described in Annex-4.

GoSL will take the necessary measures, as described in Annex-5, for smooth implementation of the Project, as a condition for the Japanese Grant Aid to be implemented.

Annex-1 Project Sites Map

Annex-2 Organization Chart

Annex-3 Major Issues Discussed

Annex-4 Japan's Grant Aid Scheme

Annex-5 Major Undertakings to be taken by each Government

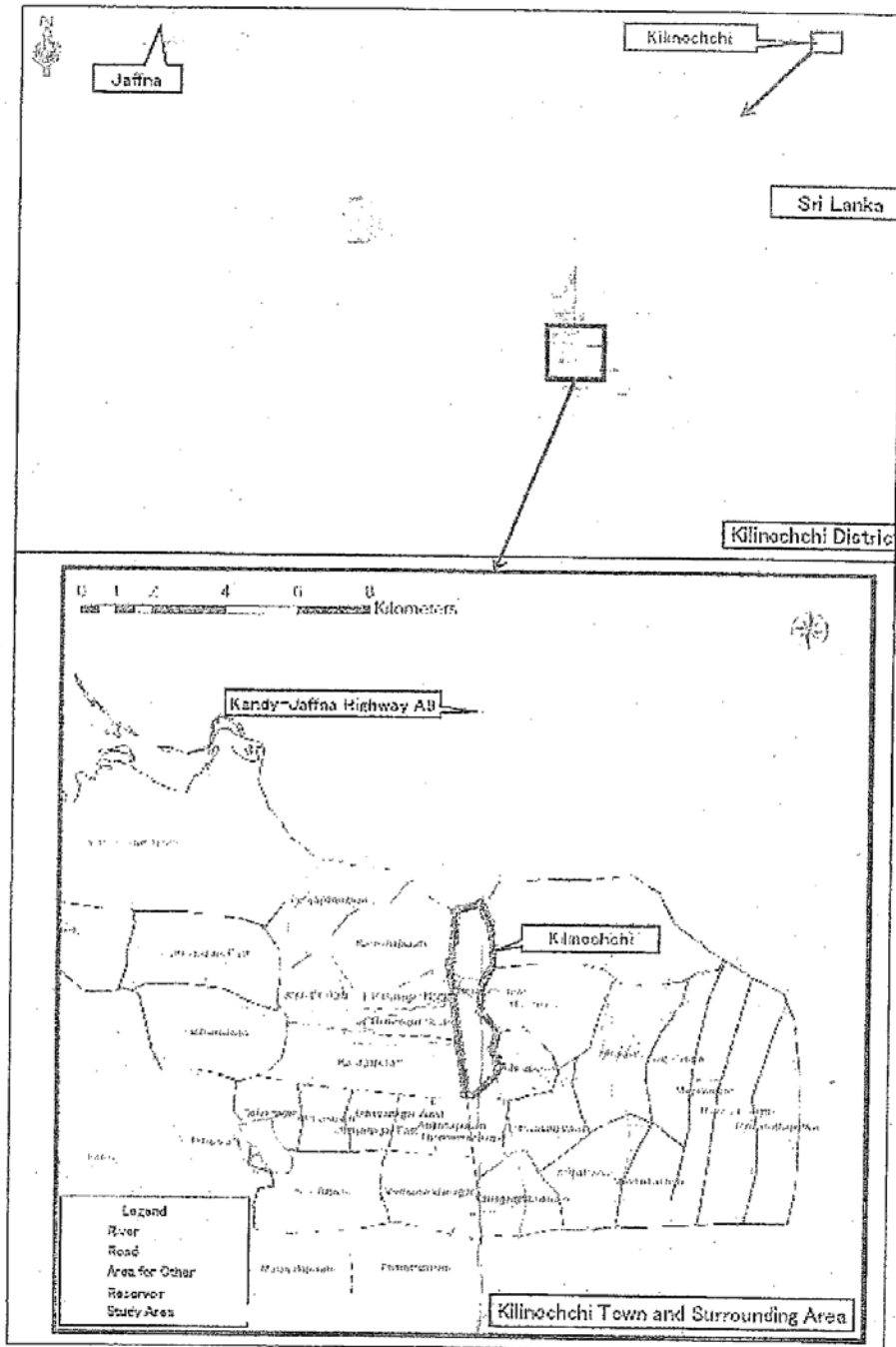
Annex-6 Proposed Project Management Unit Staff

Annex-7 Proposed Operation and Maintenance Staff

END

h n

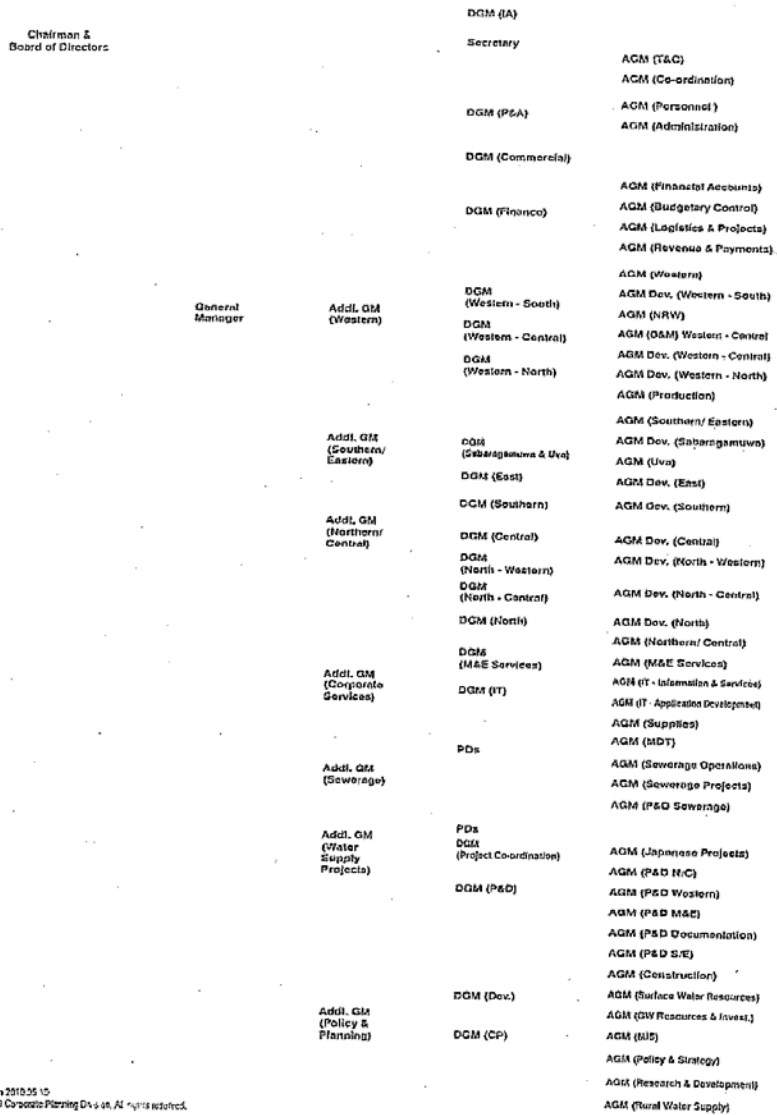
PROJECT SITES MAP



in 2

ORGANIZATION CHART

Organization Structure of the National Water Supply & Drainage Board



Version 2010.05.10
© 2010 Co-ordinate Planning Division, All rights reserved.

Handwritten signature and initials

MAJOR ISSUES DISCUSSED

The following issues were discussed among the Sri Lankan Side and the JICA Mission.

1 The Request of Small Scale Treatment Plant and Drilling Equipment

GoSL submitted a separate request of a package water treatment plant (1,000m³/d) to EoJ to utilize the Counterpart Fund of 2KR. The proposed plant was for urgent supply of safe drinking water to the Killinochchi General Hospital, other institutions and domestic users. Upon completion of the rehabilitation of the existing 3,000m³/d treatment plant, the proposed package plant will be disassembled and relocated.

GoSL has submitted another request to purchase well drilling equipment and spare parts for rural water supply.

Both sides confirmed that there is no duplication among the three projects.

2 Confirmation of Water Right

NWSDB explained that the agreement between the Provincial Irrigation Department (NEPC) and NWSDB dated 13 July 2007 was confirmed as remaining valid; the confirmation was made during the stakeholder meeting held by the Government Agent – Killinochchi and participated by the Farmers Organization, Divisional Secretary- Kandavalai, the Irrigation Department, and NWSDB held on 12 October 2010.

NWSDB also explained that water abstraction up to 12,000m³/d for Killinochchi District are confirmed.

3 Alternative Locations of Towers

The Location of Elevated Tower of 1,000m³ is to be changed since there is a plan to reserve the previous tower as a memorial. The Paranthan Balancing Tower of 450 m³ also might need to be relocated due to space limitations. The Sri Lankan side will decide alternative locations for the Towers by 11 March 2011. The JICA Mission stated that the conditions of the substitute land are: (1) mine cleared (2) topographically appropriate (3) smooth land acquisition.

4 Expansion Plan of A9 Road and Rehabilitation of Pipelines

NWSDB explained that there is a plan to widen the A9 road. Even if the existing pipelines were still in good condition, after expansion the pipelines would be under the carriage way of the road and maintenance work will be hampered. Therefore NWSDB requested the JICA Mission to consider re-laying the transmission mains and distribution lines.

In case the A9 widening works commences prior to the Project, NWSDB will implement the road crossing works.

The JICA Mission will convey the request to GoJ after further collection of information by the JICA Mission.

Q
i n

5 Future Plan of Killinochchi Development

Both sides agreed that the Project should be in line with the Future Development Plan of the District. The Sri Lanka side will provide relevant information. The JICA Mission emphasized that a Grant Aid Project is aimed at meeting immediate needs and a District Development Plan should be interpreted reflecting present conditions of the district.

6 Service Level

NWSDB explained that the Board approval has been obtained to implement 1,000 individual connections on subsidized rate in the Killinochchi Town. NWSDB requested the materials of individual connection be included in the Project.

7 Treatment of Wastewater of Hospitals

The JICA Mission expressed their concern about the possibility of discharging wastewater of District General Hospital and District Ayurvedic Hospital into Dry Aru. NWSDB understood the necessity to handle the waste water properly and requested this to be included in the Project, if any adverse effect on to Dry Aru were found.

8 Jaffna- Killinochchi Water Supply and Sanitation Project

NWSDB explained that the Jaffna- Killinochchi Water Supply and Sanitation Project funded by the ADB only includes Poomeri and Palai Divisions of Killinochchi District, and is out of the service area of the Project.

9 Staff Allocation

NWSDB agreed to make arrangements to allocate sufficient numbers of trained staffs for Construction Supervision, Operation and Maintenance. Numbers, Job Descriptions and backgrounds of necessary staffs will be discussed and identified in the course of the Preparatory Survey.

10 Budget Allocation

The GoSL shall make necessary arrangements to allocate budget for the responsibility of the recipient country.

Handwritten signature
i u

JAPAN'S GRANT AID SCHEME

The Government of Japan (hereinafter referred to as "the GOJ") is implementing the organizational reforms to improve the quality of ODA operations, and as a part of this realignment, a new JICA law was entered into effect on October 1, 2008. Based on the law and the decision of the Government of Japan (hereinafter referred to as "the GOJ"), JICA has become the executing agency of the Grant Aid for General Projects, for Fisheries and for Cultural Cooperation, etc.

The Grant Aid is non-reimbursable fund to a recipient country to procure the facilities, equipment and services (engineering services and transportation of the products, etc.) for economic and social development of the country under principles in accordance with the relevant laws and regulations of Japan. The Grant Aid is not supplied through the donation of materials as such.

1. Grant Aid Procedures

The Japanese Grant Aid is conducted as follows-

- Preparatory Survey (hereinafter referred to as "the Survey")
 - The Survey conducted by JICA
- Appraisal & Approval
 - Appraisal by the GOJ and JICA, and Approval by the Japanese Cabinet
- Determination of Implementation
 - The Notes exchanged between the GOJ and a recipient country
- Grant Agreement (hereinafter referred to as "the G/A")
 - Agreement concluded between JICA and a recipient country
- Implementation - Implementation of the Project on the basis of the G/A

2. Preparatory Survey**(1) Contents of the Survey**

The aim of the Survey is to provide a basic document necessary for the appraisal of the Project by JICA and the GOJ. The contents of the Survey are as follows:

- Confirmation of the background, objectives, and benefits of the Project and also institutional capacity of agencies concerned of the recipient country necessary for the implementation of the Project.
- Evaluation of the appropriateness of the Project to be implemented under the Grant Aid Scheme from a technical, financial, social and economic point of view.
- Confirmation of items agreed on by both parties concerning the basic concept of the Project.
- Preparation of a basic design of the Project.
- Estimation of costs of the Project.

The contents of the original request by the recipient country are not necessarily approved in their initial form as the contents of the Grant Aid project. The Basic Design of the Project is confirmed considering the guidelines of the Japan's Grant Aid scheme.

JICA requests the Government of the recipient country to take whatever measures are necessary to ensure its self-reliance in the implementation of the Project. Such measures must be guaranteed even though they may fall outside of the jurisdiction of the organization in the recipient country actually implementing the Project. Therefore, the implementation of the Project is confirmed by all relevant organizations of the recipient country through the Minutes of Discussions.

(2) Selection of Consultants

For smooth implementation of the Survey, JICA uses (a) registered consulting firm(s). JICA selects (a) firm(s) based on proposals submitted by interested firms.

(3) Result of the Survey

The Report on the Survey is reviewed by JICA, and after the appropriateness of the Project is confirmed, JICA recommends the GOJ to appraise the implementation of the Project.

3. Japan's Grant Aid Scheme

(1) The E/N and the G/A

After the Project is approved by the Cabinet of Japan, the Exchange of Notes (hereinafter referred to as "the E/N") will be signed between the GOJ and the Government of the recipient country to make a plea for assistance, which is followed by the conclusion of the G/A between JICA and the Government of the recipient country to define the necessary articles to implement the Project, such as payment conditions, responsibilities of the Government of the recipient country, and procurement conditions.

(2) Selection of Consultants

The consultant firm(s) used for the Survey will be recommended by JICA to the recipient country to also work on the Project's implementation after the E/N and the G/A, in order to maintain technical consistency.

(3) Eligible source country

Under the Japanese Grant Aid, in principle, Japanese products and services including transport or those of the recipient country are to be purchased. When JICA and the Government of the recipient country or its designated authority deem it necessary, the Grant Aid may be used for the purchase of the products or services of a third country. However, the prime contractors, namely, constructing and procurement firms, and the prime consulting firm are limited to "Japanese nationals".

(4) Necessity of "Verification"

The Government of the recipient country or its designated authority will conclude contracts denominated in Japanese yen with Japanese nationals. Those contracts shall



be verified by JICA. This "Verification" is deemed necessary to secure accountability to Japanese taxpayers.

(5) Major undertakings to be taken by the Government of the Recipient Country

In the implementation of the Grant Aid Project, the recipient country is required to undertake such necessary measures as Annex.

(6) "Proper Use"

The Government of the recipient country is required to maintain and use the facilities constructed and the equipment purchased under the Grant Aid properly and effectively and to assign staff necessary for this operation and maintenance as well as to bear all the expenses other than those covered by the Grant Aid.

(7) "Export and Re-export"

The products purchased under the Grant Aid should not be exported or re-exported from the recipient country.

(8) Banking Arrangements (B/A)

- a) The Government of the recipient country or its designated authority should open an account in the name of the Government of the recipient country in a bank in Japan (hereinafter referred to as "the Bank"). JICA will execute the Grant Aid by making payments in Japanese yen to cover the obligations incurred by the Government of the recipient country or its designated authority under the Verified Contracts.
- b) The payments will be made when payment requests are presented by the Bank to JICA under an Authorization to Pay (A/P) issued by the Government of the recipient country or its designated authority.

(9) Authorization to Pay (A/P)

The Government of the recipient country should bear an advising commission of an Authorization to Pay and payment commissions to the Bank.

(10) Social and Environmental Considerations

A recipient country must ensure the social and environmental considerations for the Project and must follow the environmental regulation of the recipient country and JICA socio-environmental guidelines.

(End)

①
i u

Annex- 5

Major Undertakings to be taken by Each Government (Architecture)

* To be adjusted as appropriate for each project

NO	Items	To be covered by the Grant	To be covered by Recipient side
1	To secure land		⊙
2	To clear, level and reclaim the site when needed		⊙
3	To construct gates and fences in and around the site		⊙
4	To construct the parking lot	⊙	
5	To construct roads		
	1) Within the site	⊙	
	2) Outside the site		⊙
6	To construct the building	⊙	
7	To provide facilities for the distribution of electricity, water supply, drainage and other incidental facilities		
	1) Electricity		
	a. The distributing line to the site		⊙
	b. The drop wiring and internal wiring within the site	⊙	
	c. The main circuit breaker and transformer	⊙	
	2) Water Supply		
	a. The city water distribution main to the site		⊙
	b. The supply system within the site (receiving and/or elevated tanks)	⊙	
	3) Drainage		
	a. The city drainage main (for storm, sewer and others) to the site		⊙
	b. The drainage system (for toilet sewer, ordinary waste, storm drainage and others) within the site	⊙	
	4) Telephone System		
	a. The telephone trunk line to the main distribution frame / panel (MDF) of the building		⊙
	b. The MDF and the extension after the frame / panel	⊙	
	5) Furniture and Equipment		
	a. General furniture		⊙
	b. Project equipment	⊙	
8	To bear the following commissions to a bank of Japan for the banking services based upon the B/A		
	1) Advising commission of A/P		⊙
	2) Payment commission		⊙

2
i n

NO	Items	To be covered by the Grant	To be covered by Recipient side
9	To ensure prompt unloading and customs clearance at the port of disembarkation in recipient country		
	1) Marine(Air) transportation of the products from Japan to the recipient country	⊙	
	2) Tax exemption and customs clearance of the products at the port of disembarkation		⊙
	3) Internal transportation from the port of disembarkation to the project site	⊙	
10	To accord Japanese nationals whose services may be required in connection with the supply of the products and the services under the verified contract such facilities as may be necessary for their entry into the recipient country and stay therein for the performance of their work		⊙
11	To exempt Japanese nationals from customs duties, internal taxes and other fiscal levies which may be imposed in the recipient country with respect to the supply of the products and services under the verified contract		⊙
12	To maintain and use properly and effectively the facilities constructed and equipment provided under the Grant Aid		⊙
13	To bear all the expenses, other than those to be borne by the Grant Aid, necessary for construction of the facilities as well as for the transportation and installation of the equipment		⊙

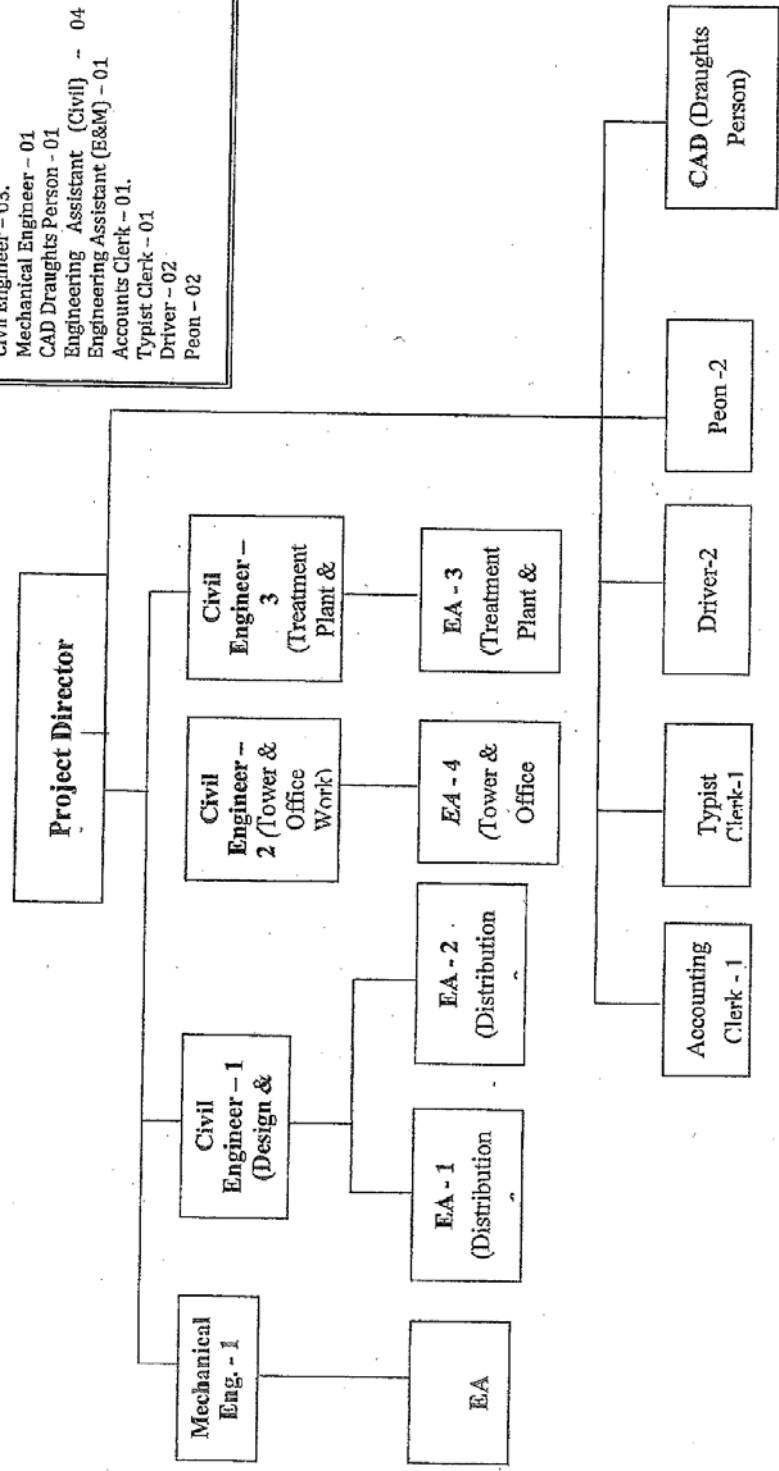
(B/A: Banking Arrangement, A/P: Authorization to pay, N/A: Not Applicable)

Handwritten marks:
 ⊙
 i n

ed 2.3
Annex - 6

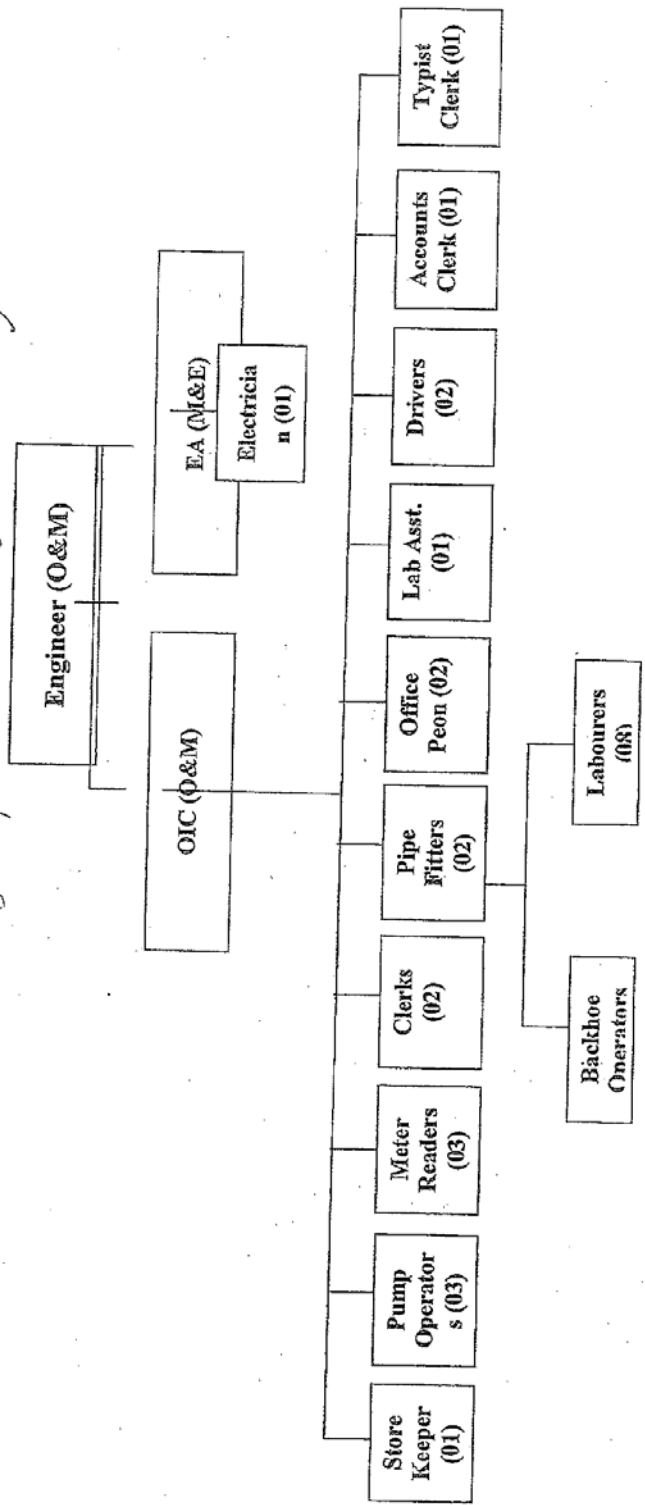
Rehabilitation of Killinochchi Water Supply Scheme – Design & Construction
Funded by Government of Japan
PMU Staff

Summary:
 Project Director - 01
 Civil Engineer - 03,
 Mechanical Engineer - 01
 CAD Draughts Person - 01
 Engineering Assistant (Civil) - 04
 Engineering Assistant (E&M) - 01
 Accounts Clerk - 01,
 Typist Clerk - 01,
 Driver - 02
 Peon - 02



ed 3, 1
Annex - 7


Proposed O&M Staff Requirement for Killinochchi WSS
Assigned by N&S 2&3 withing their career



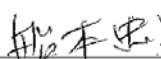
4-2 Minutes of Discussions on 28 March 2011

**MINUTES OF THE MEETING ON MARCH 28TH 2011
ON
PREPARATORY STUDY
ON
REHABILITATION OF KILLINOCHCHI WATER SUPPLY SCHEME
IN
DEMOCRATIC SOCIALIST REPUBLIC OF SRI LANKA**

Agreed on March 28th 2011



Mr. D.S.D Jayasiriwardene
Deputy General Manager
Planning & Design Section,
National Water Supply & Drainage Board



Mr. Tadao Funamoto
Chief Consultants
JICA Study Team

MINUTES OF THE MEETING

- I. Date and Time : 28 March 2011, 14:00-16:40
- II. Place : Meeting Room of Planning & Design Division NWSDB
- III. Present : As shown in the attached attendants list
- IV. Discussions

The meeting was chaired by Mr. D.S.D Jayasiriwardene; Deputy General Manager, NWSDB Planning & Design Section. In the meeting two subjects were discussed, i.e. 1) water treatment technologies to be introduced into the WTP, and 2) the water supply system options and the project components to be undertaken by the Japan's Grant Aid Scheme or by Sri Lankan side. Those two subjects had been discussed generally on March 23rd 2011 and on March 14th respectively. Both issues were discussed in detail and both sides agreed to select the Case -2 as the optimum option.

Water Treatment Technology

- 1) NWSDB explained the necessity of detailed discussion about the technology which will be introduced into the WTP in addition to the existing Slow Sand Filters technology. In the previous meeting "Pre-chlorination + Aeration" was supposed to be introduced; however, NWSDB suggested that another technology such as Roughing Filters might be suitable to deduce Turbidity, Colour, Iron and Manganese properly. However, NWSDB explained that Mn measurements are not available for the source and agreed to provide them within next week. The NWSDB indicated that all the above technologies are only options to be considered by the consultant prior to finalization their final recommendation of the appropriate treatment method.
- 2) NWSDB also explained the necessity of a trial analysis to be conducted to determine the effectiveness of proposed technology and the JICA Study Team agreed to carry out the trial in the early period in April 2011. The JICA Study Team will make a testing method proposal before 01 April 2011 and discuss with NWSDB about detailed procedures. Since algae is present in water a suitable option will be introduced to reduce them to an acceptable level at the intake.

Water Supply System Option

- 3) The JICA Study Team explained that there are following three options as concepts of Planning the Project, as follows:
- 3 Options of Scope of Works for Japan's Grant Aid components
- Case-1: Rehabilitation of the former existed main water supply system
 - Case-2: Rehabilitation of the former existed water supply system with some extension up to Iranamadu Junction
 - Case-3: Rehabilitation of the former existed water supply System with future provision
- 4) NWSDB and the JICA Study Team agreed to select the Case -2 as the optimum option.

- 5) Case-3 shall be justified as a future plan which will cover the entire area of Killinochchi Division in the aspects of the consistency of the total water supply system in future.
- 6) NWSDB agreed that Case-3, the expansion of the water supply system to the southern area (Ponnagar and Bharathipuram) shall be taken care of in a future plan.
- 7) The area for the elevated tower which will be newly constructed in Kilinochchi Town is proposed to be included with in the current WTP land. It shall be justified with treatment technology selection. NWSDB also agreed to search for a suitable land to construct the tower within a radius of 1 km from the existing TP land within 2 weeks and report.
- 8) Regarding the demarcation of the proposed project components between Japan's Grant Aid components and Sri Lankan sides' components, NWSDB and the JICA Study Team agreed tentatively as follows. This will be finalized and agreed among NWSDB and the next JICA mission expected in May 2011, after further analysis, discussion and approval in Japan.

No	Items	Grant Aid Project Component	Sri Lankan sides
1	Demolition and Disposal of damaged structures	Deleted	
2	Intake / Catchment Protection	Included	
3	Supply & Installation of LL and HL Pumps and Generators	Included	
4	Rehabilitation, Repairs, Modification and Improvement of existing 3,000 m ³ capacity water treatment plant and intake with clear water tank	Included	
5	Construction of 1,000 m ³ tower at Kilinochchi Town	Included	
6	Construction of 450 m ³ tower at Paranthan	Included	
7	Rehabilitation of Raw Water Main	Included DCIP L=200m	
8	Rehabilitation of Treated Water Transmission Main to Paranthan	Included DCIP L=6 km	
9	Rehabilitation and repair of uPVC - distribution system including reinforcement	Included uPVC L=approx. 34 km	
10	Supply & Installation of Gas Chlorinator	Included	
11	Construction of Quarters	Excluded	Will manage
12	Construction Office Building and Stores	Only O&M rooms at WTP site	Main Office and Stores will be taken
13	Power Supply	Excluded	Will manage
14	Vehicles for operation and maintenance works (Pickups - 2, Lorry Mounted Crane - 1, JCB - 1, Crew Cab - 2)	Included	
15	O&M Equipment and Laboratory Equipment	Minimum equipment required for WTP operation	Laboratory in Jaffna Office will overview
16	Capacity Building Training Programme	Included (O&M Training shall be included)	General Training for newly hired staffs will be done by NWSDB
17	House Connections (added)	Included (1,500 connections)	

Note 1: As to the pipe material, utilization of PE is to be examined.

Note 2: The number of connections shall be examined and justified later.

9) A population density map to be developed by the JICA Study Team to clarify area-wise priorities of the project.

IV. Conclusion

NWSDB and the JICA Study Team agreed to examine the project components in further detail through internal and mutual discussions prior to the second JICA's Mission.

The JICA Sri Lanka Office Representative explained the tentative schedule of the Preparatory Survey on Rehabilitation of Killinochchi WSS (Phase 2) from May 9th 2011 to June 29th 2011.

V. Others

Regarding environmental and social considerations, JICA Study Team explained that they need to confirm in writing from CEA that neither IEE nor EIA is necessary for the Project. NWSDB will contact CEA and discuss whether there are any issues to be clarified regarding fauna and flora ordinance clarification, etc.

Attachment: List of Participants

Mr. D.S.D Jayasiriwardene	NWSDB Planning & Design Section	Deputy General Manager
Mr. M.M. Umarlebbe	NWSDB Japanese Projects Unit	Assistant General Manager
Mr. R.B. Thavendrakumar	NWSDB NR-Jaffna	Regional Manager
Mr. R. R. P.N. Rathnayake	NWSDB Planning & Design Section	Specialist (Water Treatment)
Mr. S. Saravanakugan	NWSDB Planning & Design Section	Engineer
Mr. Imran M Saheer	NWSDB Japanese Projects Unit	Engineer
Mr. Tsuyoshi Hara	JICA Sri Lanka Office	Representative
Mr. Tadao Funamoto	JICA Study Team	Chief Consultant
Mr. Shinichi Osaka	JICA Study Team	O&M Specialist
Mr. Takashi Watanabe	JICA Study Team	Construction Planning Specialist

4-3 Minutes of Meetings on 13 May 2011

**THE MINUTES OF MEETINGS
ON
THE MISSION FOR THE PREPARATORY SURVEY (PHASE 2)
ON
REHABILITATION OF KILLINOCHCHI WATER SUPPLY SCHEME
IN
DEMOCRATIC SOCIALIST REPUBLIC OF SRI LANKA**

In response to a request from the Government of the Democratic Socialist Republic of Sri Lanka (hereinafter referred to as "GoSL"), the Government of Japan decided to conduct a preparatory Survey (Phase 2) on Rehabilitation of Killinochchi Water Supply Scheme (hereinafter referred to as "the Project").

JICA sent to Sri Lanka the Preparatory Survey Team (hereinafter referred to as "the JICA Mission") which is headed by Mr. Yoshiki Omura, Senior Advisor, JICA, and is scheduled to stay in the country from 8 May 2011 to 25 June 2011.

The JICA Mission held discussions with the officials concerned of GoSL and conducted a field survey at the survey area.

In the course of discussions and field survey, both parties confirmed the main items described in the attached sheets. The JICA Mission will proceed to further works and prepare the preparatory survey report.

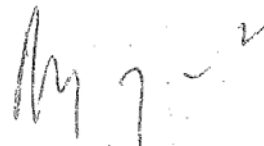
Colombo, 13 May 2011



Mr. Yoshiki Omura
Leader
The Preparatory
Study Team
Japan International
Cooperation Agency
(JICA)



Mr. M P D U K Mapa Pathirana
Director General
Department of External Resources
Ministry of Finance and Planning



Mr. A. Abeygunasekara
Secretary
Ministry of Water Supply
and Drainage



Mr. Karunasena Hettiarachchi
Chairman
National Water Supply
and Drainage Board

ATTACHMENT

1. Objective of the Project

The Objective of the Project is the rehabilitation of the existing water supply scheme to bring it back to operational level.

2. Project Site

The site of the Project is located in Killinochchi as shown in **Annex-1**.

3. Responsible and Implementing Agency

3-1 The Responsible Organization is the Ministry of Water Supply and Drainage.

3-2 The Implementing Agency is the National Water Supply and Drainage Board (NWSDB).

The organization chart is shown in **Annex-2**.

4. Items requested by the Government of Sri Lanka

After discussions between the Sri Lanka side and the JICA Mission (hereinafter referred to as "the both sides"), the items described in **Annex-3** were finally requested by the Sri Lanka side.

The both sides confirmed that the appropriateness of the request would be examined in accordance with the further studies and analysis, and the final components of the Project would be decided by the Japanese side.

5. Japan's Grant Aid Scheme

5-1 GoSL understands the Japan's Grant Aid Scheme explained by the JICA Mission as described in **Annex 4**.

5-2 GoSL will take the necessary measures, as described in **Annex-5**, for smooth implementation of the Project, as a condition for the Japanese Grant Aid to be implemented.

6. Schedule of the Survey

6-1 The consultant members of the JICA Mission will proceed to further studies in Sri Lanka until June 25, 2011.

6-2 JICA will prepare the survey report in English and dispatch a mission in order to explain its contents to GoSL around October 2011.

6-3 In case that the contents of the report are accepted in principal by GoSL, JICA will finalize the report and send it to the GoSL around December 2011.

6-4 GoSL understands that execution of the Preparatory Survey (hereinafter referred to as "the Survey") does not necessarily imply that the grant aid will be implemented.

7. Other Relevant Issues

In addition to the issues recorded in the previous minutes of meeting signed on 3 March 2011, the following were discussed and agreed:

7-1 Expansion Plan of A9 Road and Rehabilitation of Pipelines

Regarding the proposed transmission pipe and distribution pipe routes along the A9 road, the A9 road expansion project will be started before the commencement of the Project. Both sides recognized that the existing pipes will be located in the middle of expanded carriage way, which makes operation and maintenance of the pipes difficult, and there is a need of

relocation of pipeline to the road sides of the expanded A9 road. Also both sides recognized that the other existing transmission and distribution mains have the possibility of damages by bombardment during the conflict. Therefore both sides considered that it was preferable to install new pipeline for the transmission and distribution mains of the Project and leave the existing mains as they are. NWSDB agreed to install road crossing pipeline across the expanded A9 road at approximately 500m intervals.

7-2 Treatment of Wastewater of Hospitals

NWSDB explained that untreated wastewater is discharged by the Killinochchi District General Hospital directly to Dry Aru Tank, which was proposed as a water source for Killinochchi water supply scheme. NWSDB also explained that a nearby army camp is also discharging wastewater.

In view of water resource conservation, NWSDB proposed a plan to construct a wastewater treatment facility (stabilization pond system) for treating both wastewater from the hospital and the army camp.

The JICA Mission requested that the treatment facilities be made operable by the end of 2013 or the Project completion. NWSDB agreed to include this cost for the government budget of 2012 to meet the schedule.

NWSDB also explained that no wastewater from the Ayurvedic Hospital is drained to Dry Aru tank.

7-3 UXO disposal

NWSDB submitted "Current Status of Mine Action Map for Kandavalai DS Division as of April 27, 2011", which indicated that the project area was of low risk with respect to landmines. In this regard, the JICA Mission requested and NWSDB agreed to arrange the Technical Survey (TS) at least within the premises of Killinochchi Water Treatment Plant by October 2011.

Also during the previous survey, the JICA Mission recognized risks of unexploded ordnance (UXO) in addition to landmines. The JICA Mission requested and NWSDB agreed to conduct the following activities during the project period:

- i) With assistance of UN Mine Action Office, NWSDB shall organize a seminar on landmines and UXOs about current situations and how to deal with them when UXOs are discovered prior to the commencement of the construction works.
- ii) NWSDB shall facilitate Technical Survey (TS) of all the routes of transmission and distribution mains for UXO by November 2011. If any landmines/UXOs were found, NWSDB immediately reports to the UN Mine Action Office for disposal.
- iii) NWSDB shall report to the UN Mine Action Office and clear the landmines/UXOs, if found during the construction works.

7-4 Treatment of color and turbidity

In the previous field survey, NWSDB showed its concern of color, turbidity, Manganese and algae and requested the countermeasures. The Mission proposed introduction of up-flow roughing filtration as pre-treatment. NWSDB agreed the proposal.

7-5 Pipe material

In the previous field survey, NWSDB requested to utilize High-density Polyethylene (PE) pipes instead of PVC pipes for distribution network. After the previous field survey a comparative study was conducted about pipe material and, both sides agreed to utilize PVC pipes for the distribution network for the Project.

Both sides also agreed that for transmission mains, PE pipe will be used except for exposed sections, where Ductile Iron pipes are applied, and for house connections, PE pipes of 15mm and/or 20mm diameters will be used.

7-6 Installation of individual house connections

In the previous survey, NWSDB requested new 1500 individual connections under the Project. The JICA mission proposed that the Japanese side will provide pipe material and water meters for 1500 connections for NWSDB's installation work if NWSDB submitted justification of such quantity acceptable to JICA. NWSDB agreed to install 2000 connections including said 1500 connections for immediate maximization of benefit within one year after completion of the Project.

7-7 Proposed intake pit

NWSDB requested to locate the proposed intake pit off the existing intake pit and the JICA Mission agreed. Both sides agreed to study providing devices for minimizing inflow of algae into the proposed intake pit.

7-8 Soft component

NWDSB requested to include soft component comprising O&M training and preparing O/M manuals as follows:

- i) O&M of treatment plant
- ii) O&M of distribution system
- iii) Training of Electrical & Mechanical works
- iv) PE service connection work
- v) Water quality analysis

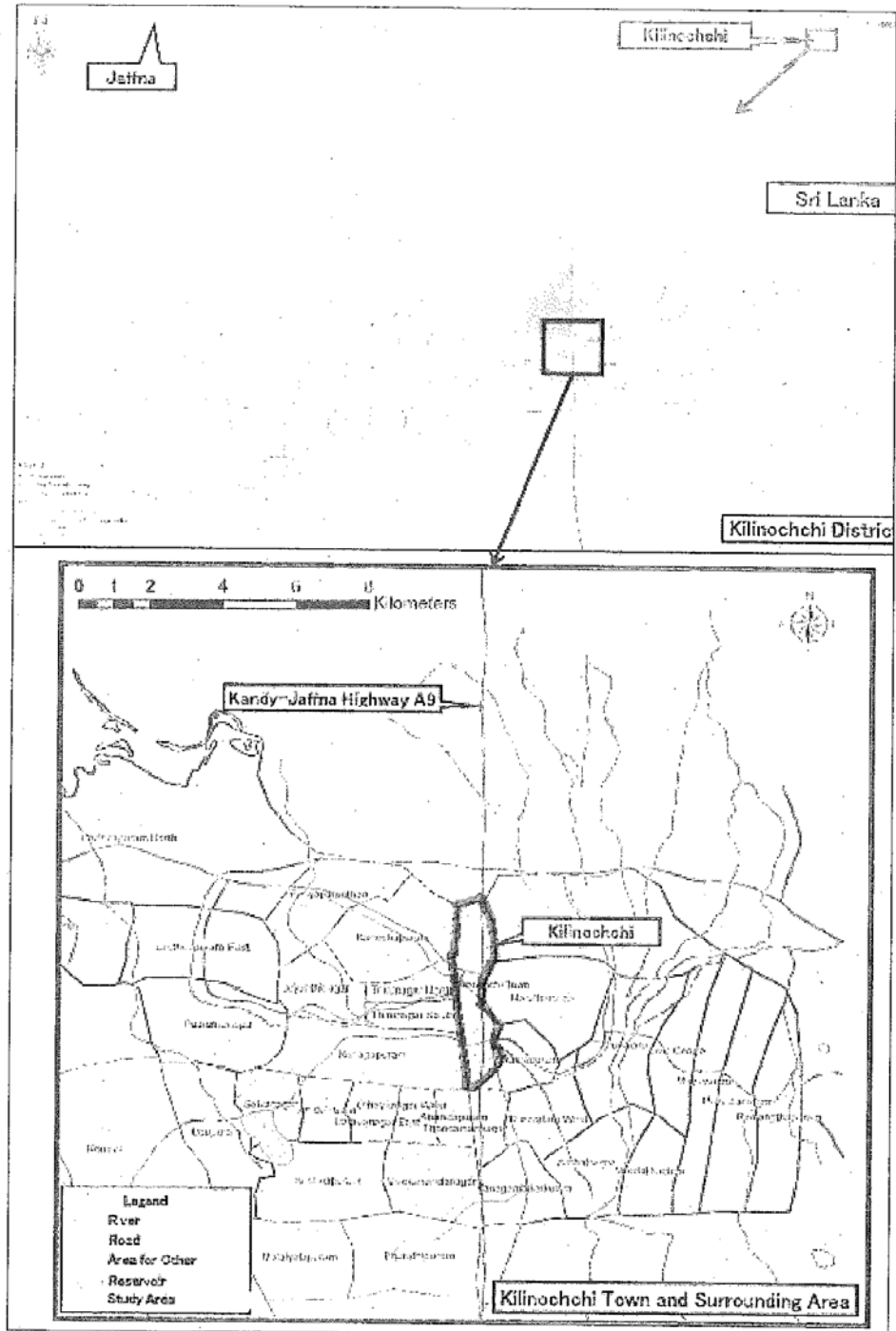
NWSDB emphasized that Killinochchi Water Supply Scheme requires manpower of 20 employees, who are mostly new recruits within the NWSDB approved cadre. The JICA Mission recognized the need of such training.

7-9 Elevated tower

NWSDB requested that the distribution system should have a single water tower comprising the existing capacity of 1,450m³ depending on the distribution model and soil condition.

END

PROJECT SITES MAP



Handwritten marks: a checkmark and some illegible scribbles.

ORGANIZATION CHART

Organization Structure of the
National Water Supply & Drainage Board

Chairman & Board of Directors		DGM (IA)	
		Secretary	AGM (T&C) AGM (Co-ordination)
General Manager		DGM (P&A)	AGM (Personnel) AGM (Administration)
		DGM (Commercial)	AGM (Financial Accounts) AGM (Budgetary Control) AGM (Logistics & Projects) AGM (Revenue & Payments) AGM (Western)
	Addl. GM (Western)	DGM (Western - South)	AGM Dev. (Western - South) AGM (NRW)
		DGM (Western - Central)	AGM (O&M) Western - Central AGM Dev. (Western - Central)
	Addl. GM (Southern/ Eastern)	DGM (Western - North)	AGM Dev. (Western - North) AGM (Production)
		DGM (Sabaragamuwa & Uva)	AGM (Southern/ Eastern) AGM Dev. (Sabaragamuwa) AGM (Uva)
	Addl. GM (Northern/ Central)	DGM (East)	AGM Dev. (East)
		DGM (Southern)	AGM Dev. (Southern)
	Addl. GM (Corporate Services)	DGM (Central)	AGM Dev. (Central)
		DGM (North - Western)	AGM Dev. (North - Western)
	Addl. GM (Sewerage)	DGM (North - Central)	AGM Dev. (North - Central)
		DGM (North)	AGM Dev. (North)
	Addl. GM (Water Supply Projects)	DGM (M&E Services)	AGM (Northern/ Central) AGM (M&E Services)
		DGM (IT)	AGM (IT - Information & Services) AGM (IT - Application Development) AGM (Supplies) AGM (MDT)
	Addl. GM (Policy & Planning)	PDs	AGM (Sewerage Operations) AGM (Sewerage Projects) AGM (P&D Sewerage)
		PDs DGM (Project Co-ordination)	AGM (Japanese Projects) AGM (P&D N/C)
		DGM (P&D)	AGM (P&D Western) AGM (P&D MAE) AGM (P&D Documentation) AGM (P&D S/E) AGM (Construction)
		DGM (Dev.)	AGM (Surface Water Resources) AGM (GW Resources & Invecl.)
		DGM (CP)	AGM (MIS) AGM (Policy & Strategy) AGM (Research & Development) AGM (Rural Water Supply)

Version 2010.05.10
© 2010 Corporate Planning Division. All rights reserved.

Handwritten marks: a checkmark, a circled '9', and a circled '10'.

Items requested by the Sri Lankan side

No.	Description
①	Intake and catchment protection
②	Supply and installation of LL & HL pumps & generators
③	Rehabilitation of existing 3000cu.m per day capacity water treatment plant, clear water sump, HL pump house and installation of transmission main
④	Construction of 1000 cu.m water tower in Killinochchi Town
⑤	Construction of 450 cu.m water tower at Paranthan
⑥	Rehabilitation of 300mm dia Raw water main
⑦	Supply and laying of 300 mm dia treated water transmission mains
⑧	Supply and laying of 225-90 mm dia 40km uPVC distribution system
⑨	Supply & installation of gas chlorinators
⑩	Construction of quarters, office building & stores
⑪	Vehicles for Operation and Maintenance works (Crew Cab 1 unit, Pick up truck 1 unit)
⑫	O&M Equipment (under-pressure tapping machine 2 units, personal computer 2 units, printer 2 units, LCD projector 1 unit) and laboratory equipment (colorimeter (temperature, turbidity and color) 1 unit, microscope 1 unit, Electrical Conductivity meters 2 units, pH meters 2 units and Residual chlorine meter 2 units)
⑬	Soft (Non-Physical) Components: Capacity building training program

JAPAN'S GRANT AID SCHEME

The Government of Japan (hereinafter referred to as "the GOJ") is implementing the organizational reforms to improve the quality of ODA operations, and as a part of this realignment, a new JICA law was entered into effect on October 1, 2008. Based on the law and the decision of the Government of Japan (hereinafter referred to as "the GOJ"), JICA has become the executing agency of the Grant Aid for General Projects, for Fisheries and for Cultural Cooperation, etc.

The Grant Aid is non-reimbursable fund to a recipient country to procure the facilities, equipment and services (engineering services and transportation of the products, etc.) for economic and social development of the country under principles in accordance with the relevant laws and regulations of Japan. The Grant Aid is not supplied through the donation of materials as such.

1. Grant Aid Procedures

The Japanese Grant Aid is conducted as follows-

- Preparatory Survey (hereinafter referred to as "the Survey")
 - The Survey conducted by JICA
- Appraisal & Approval
 - Appraisal by the GOJ and JICA, and Approval by the Japanese Cabinet
- Determination of Implementation
 - The Notes exchanged between the GOJ and a recipient country
- Grant Agreement (hereinafter referred to as "the G/A")
 - Agreement concluded between JICA and a recipient country
- Implementation - Implementation of the Project on the basis of the G/A

2. Preparatory Survey**(1) Contents of the Survey**

The aim of the Survey is to provide a basic document necessary for the appraisal of the Project by JICA and the GOJ. The contents of the Survey are as follows:

- Confirmation of the background, objectives, and benefits of the Project and also institutional capacity of agencies concerned of the recipient country necessary for the implementation of the Project.
- Evaluation of the appropriateness of the Project to be implemented under the Grant Aid Scheme from a technical, financial, social and economic point of view.
- Confirmation of items agreed on by both parties concerning the basic concept of the Project.
- Preparation of a basic design of the Project.
- Estimation of costs of the Project.

The contents of the original request by the recipient country are not necessarily approved in their initial form as the contents of the Grant Aid project. The Basic Design of the

Project is confirmed considering the guidelines of the Japan's Grant Aid scheme.

JICA requests the Government of the recipient country to take whatever measures are necessary to ensure its self-reliance in the implementation of the Project. Such measures must be guaranteed even though they may fall outside of the jurisdiction of the organization in the recipient country actually implementing the Project. Therefore, the implementation of the Project is confirmed by all relevant organizations of the recipient country through the Minutes of Discussions.

(2) Selection of Consultants

For smooth implementation of the Survey, JICA uses (a) registered consulting firm(s). JICA selects (a) firm(s) based on proposals submitted by interested firms.

(3) Result of the Survey

The Report on the Survey is reviewed by JICA, and after the appropriateness of the Project is confirmed, JICA recommends the GOJ to appraise the implementation of the Project.

3. Japan's Grant Aid Scheme

(1) The E/N and the G/A

After the Project is approved by the Cabinet of Japan, the Exchange of Notes (hereinafter referred to as "the E/N") will be signed between the GOJ and the Government of the recipient country to make a plea for assistance, which is followed by the conclusion of the G/A between JICA and the Government of the recipient country to define the necessary articles to implement the Project, such as payment conditions, responsibilities of the Government of the recipient country, and procurement conditions.

(2) Selection of Consultants

The consultant firm(s) used for the Survey will be recommended by JICA to the recipient country to also work on the Project's implementation after the E/N and the G/A, in order to maintain technical consistency.

(3) Eligible source country

Under the Japanese Grant Aid, in principle, Japanese products and services including transport or those of the recipient country are to be purchased. When JICA and the Government of the recipient country or its designated authority deem it necessary, the Grant Aid may be used for the purchase of the products or services of a third country. However, the prime contractors, namely, constructing and procurement firms, and the prime consulting firm are limited to "Japanese nationals".

(4) Necessity of "Verification"

The Government of the recipient country or its designated authority will conclude contracts denominated in Japanese yen with Japanese nationals. Those contracts shall be verified by JICA. This "Verification" is deemed necessary to secure accountability to Japanese taxpayers.

(5) Major undertakings to be taken by the Government of the Recipient Country

In the implementation of the Grant Aid Project, the recipient country is required to undertake such necessary measures as Annex.

(6) "Proper Use"

The Government of the recipient country is required to maintain and use the facilities constructed and the equipment purchased under the Grant Aid properly and effectively and to assign staff necessary for this operation and maintenance as well as to bear all the expenses other than those covered by the Grant Aid.

(7) "Export and Re-export"

The products purchased under the Grant Aid should not be exported or re-exported from the recipient country.

(8) Banking Arrangements (B/A)

a) The Government of the recipient country or its designated authority should open an account in the name of the Government of the recipient country in a bank in Japan (hereinafter referred to as "the Bank"). JICA will execute the Grant Aid by making payments in Japanese yen to cover the obligations incurred by the Government of the recipient country or its designated authority under the Verified Contracts.

b) The payments will be made when payment requests are presented by the Bank to JICA under an Authorization to Pay (A/P) issued by the Government of the recipient country or its designated authority.

(9) Authorization to Pay (A/P)

The Government of the recipient country should bear an advising commission of an Authorization to Pay and payment commissions to the Bank.

(10) Social and Environmental Considerations

A recipient country must ensure the social and environmental considerations for the Project and must follow the environmental regulation of the recipient country and JICA socio-environmental guidelines.

(End) *i*

Major Undertakings to be taken by Each Government (Architecture)

* To be adjusted as appropriate for each project

NO	Items	To be covered by the Grant	To be covered by Recipient side
1	To secure land		●
2	To clear, level and reclaim the site when needed		●
3	To construct gates and fences in and around the site		●
4	To construct the parking lot	●	
5	To construct roads		
	1) Within the site	●	
	2) Outside the site		●
6	To construct the building	●	
7	To provide facilities for the distribution of electricity, water supply, drainage and other incidental facilities		
	1) Electricity		
	a. The distributing line to the site		●
	b. The drop wiring and internal wiring within the site	●	
	c. The main circuit breaker and transformer	●	
	2) Water Supply		
	a. The city water distribution main to the site		●
	b. The supply system within the site (receiving and/or elevated tanks)	●	
	3) Drainage		
	a. The city drainage main (for storm, sewer and others) to the site		●
	b. The drainage system (for toilet sewer, ordinary waste, storm drainage and others) within the site	●	
	4) Gas Supply		
	a. The city gas main to the site		●
	b. The gas supply system within the site	●	
	5) Telephone System		
	a. The telephone trunk line to the main distribution frame / panel (MDF) of the building		●
	b. The MDF and the extension after the frame / panel	●	
	6) Furniture and Equipment		
	a. General furniture		●
	b. Project equipment	●	
8.	To bear the following commissions to a bank of Japan for the banking services based upon the B/A		
	1) Advising commission of A/P		●
	2) Payment commission		●

9 2

NO	Items	To be covered by the Grant	To be covered by Recipient side
9	To ensure prompt unloading and customs clearance at the port of disembarkation in recipient country		
	1) Marine(Air) transportation of the products from Japan to the recipient country	●	
	2) Tax exemption and customs clearance of the products at the port of disembarkation		●
	3) Internal transportation from the port of disembarkation to the project site	(●)	(●)
10	To accord Japanese nationals whose services may be required in connection with the supply of the products and the services under the verified contract such facilities as may be necessary for their entry into the recipient country and stay therein for the performance of their work		●
11	To exempt Japanese nationals from customs duties, internal taxes and other fiscal levies which may be imposed in the recipient country with respect to the supply of the products and services under the verified contract		●
12	To maintain and use properly and effectively the facilities constructed and equipment provided under the Grant Aid		●
13	To bear all the expenses, other than those to be borne by the Grant Aid, necessary for construction of the facilities as well as for the transportation and installation of the equipment		●

(B/A: Banking Arrangement, A/P: Authorization to pay, N/A: Not Applicable)

9. 2