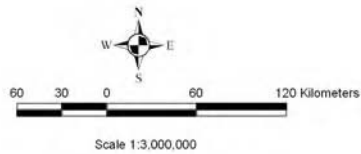
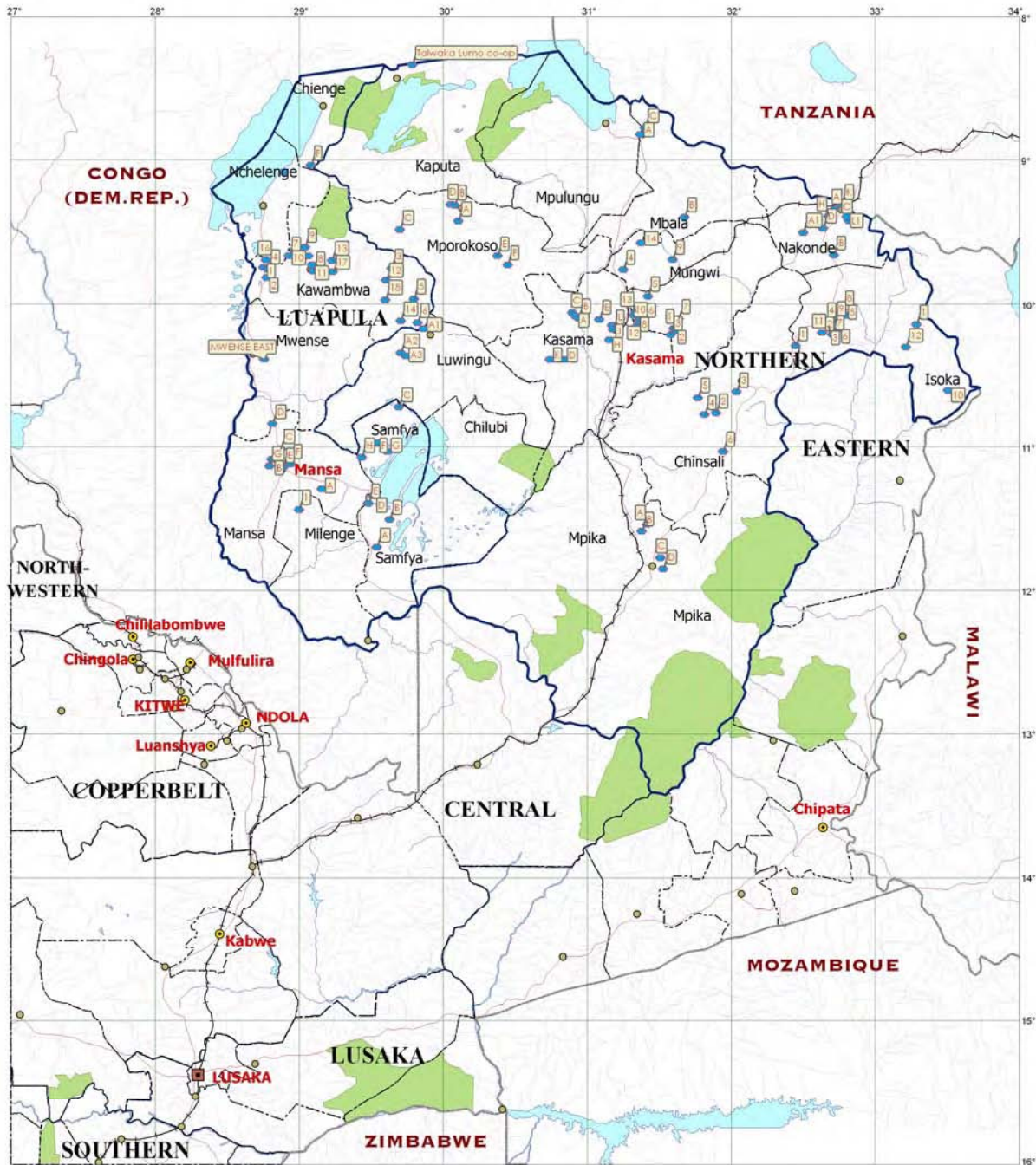


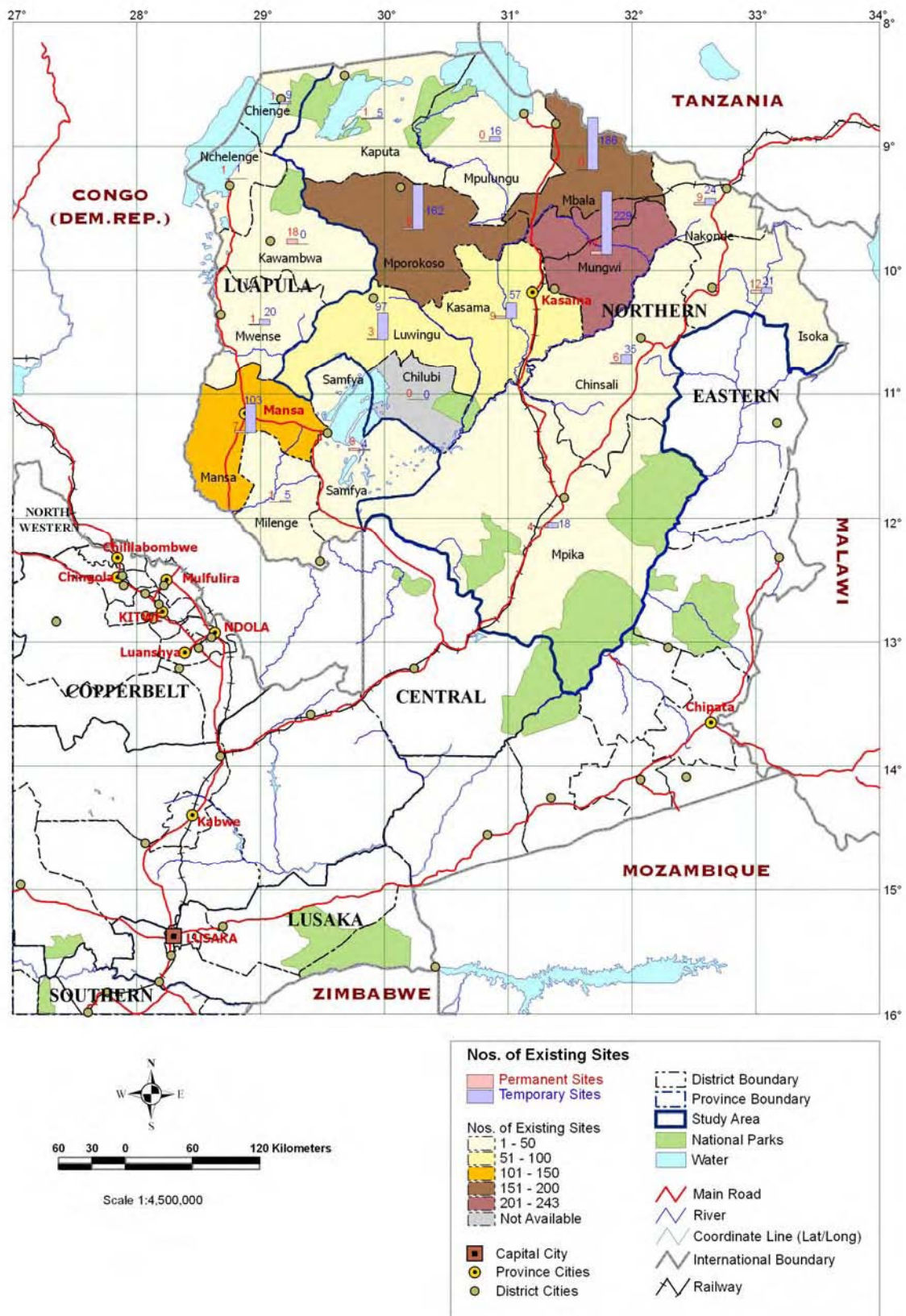
Map.39 Existing Permanent Irrigation Scheme in Northern Province and Luapula Provinc



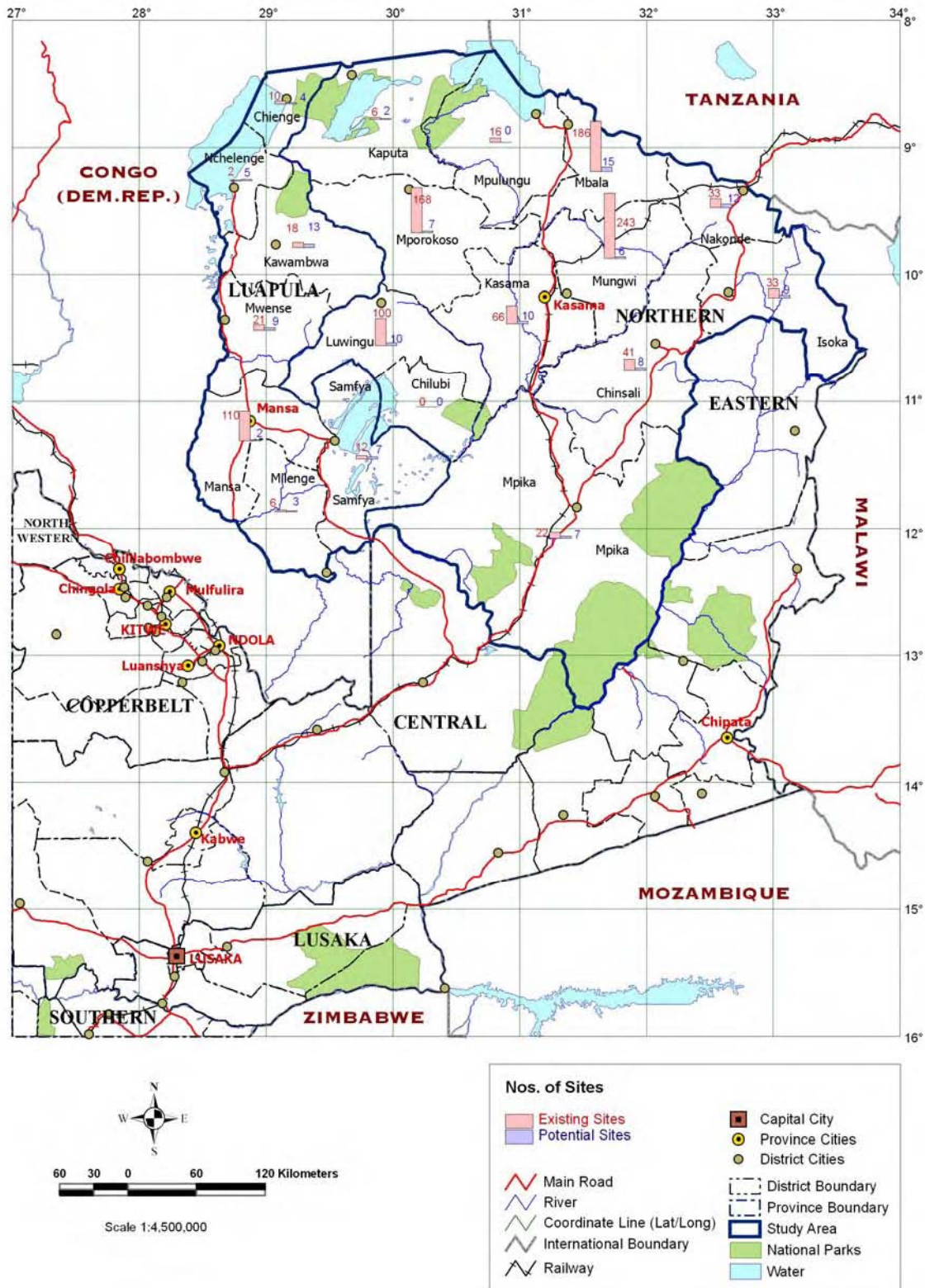
EXISTING PERMANENT IRRIGATION SCHEME

Irrigated Scheme or Sites	Road
Capital City	Main Road
Province Cities	Other Roads / Tracks
District Cities	River
District Boundary	Stream
Province Boundary	River
Province Boundary	Coordinate Line (Lat/Long)
National Parks	International Boundary
Water	Railway

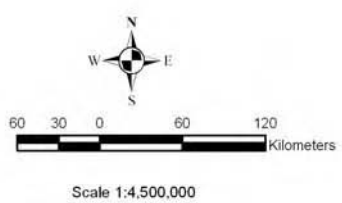
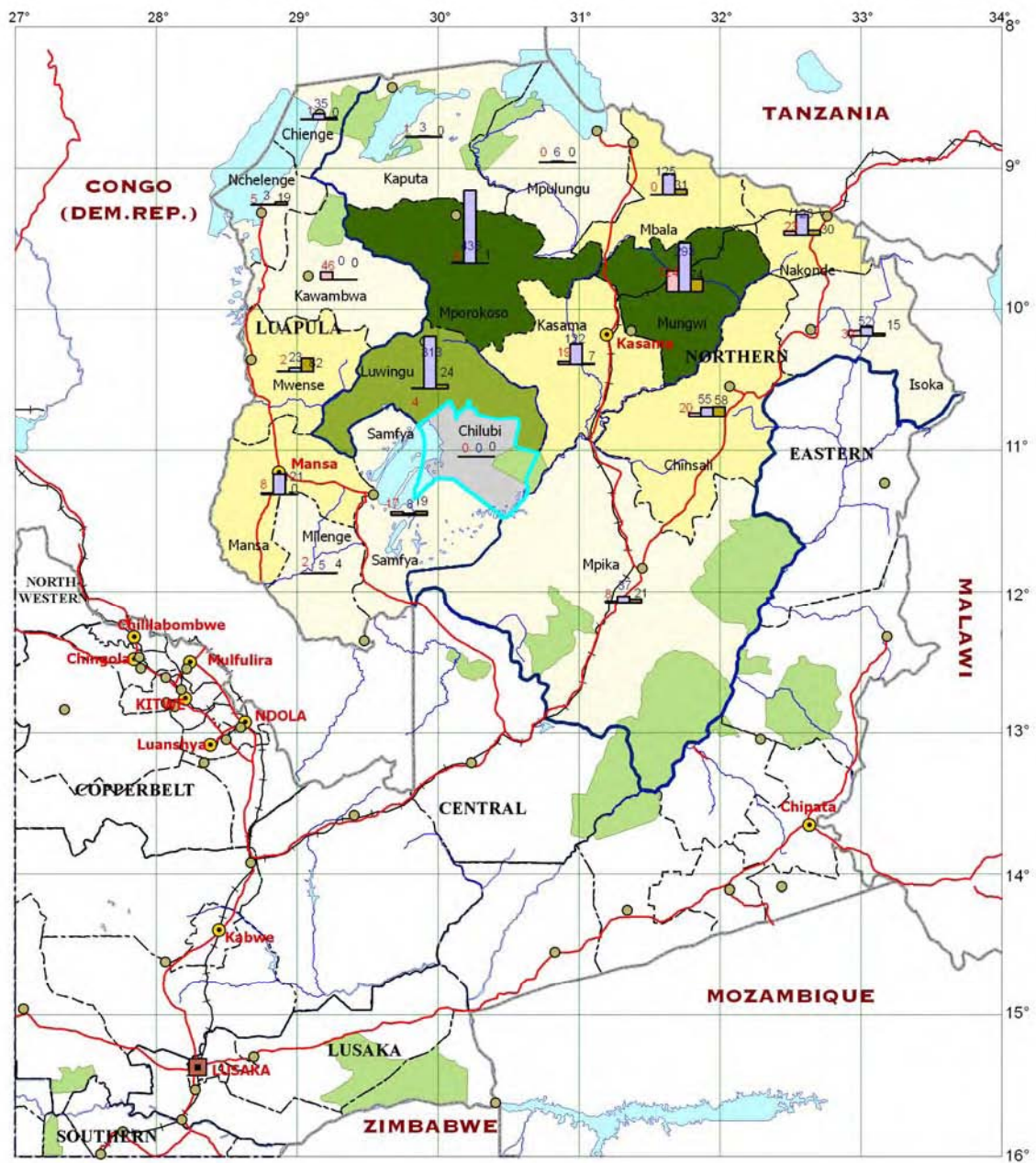
Map.40 Numbers of Existing Permanent and Temporary Sites



Map.41 Numbers of Existing and Potential Sites



Map.42 Existing Irrigated Area (ha)

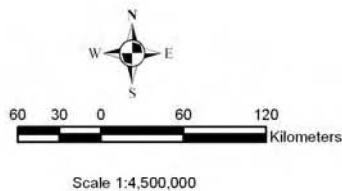
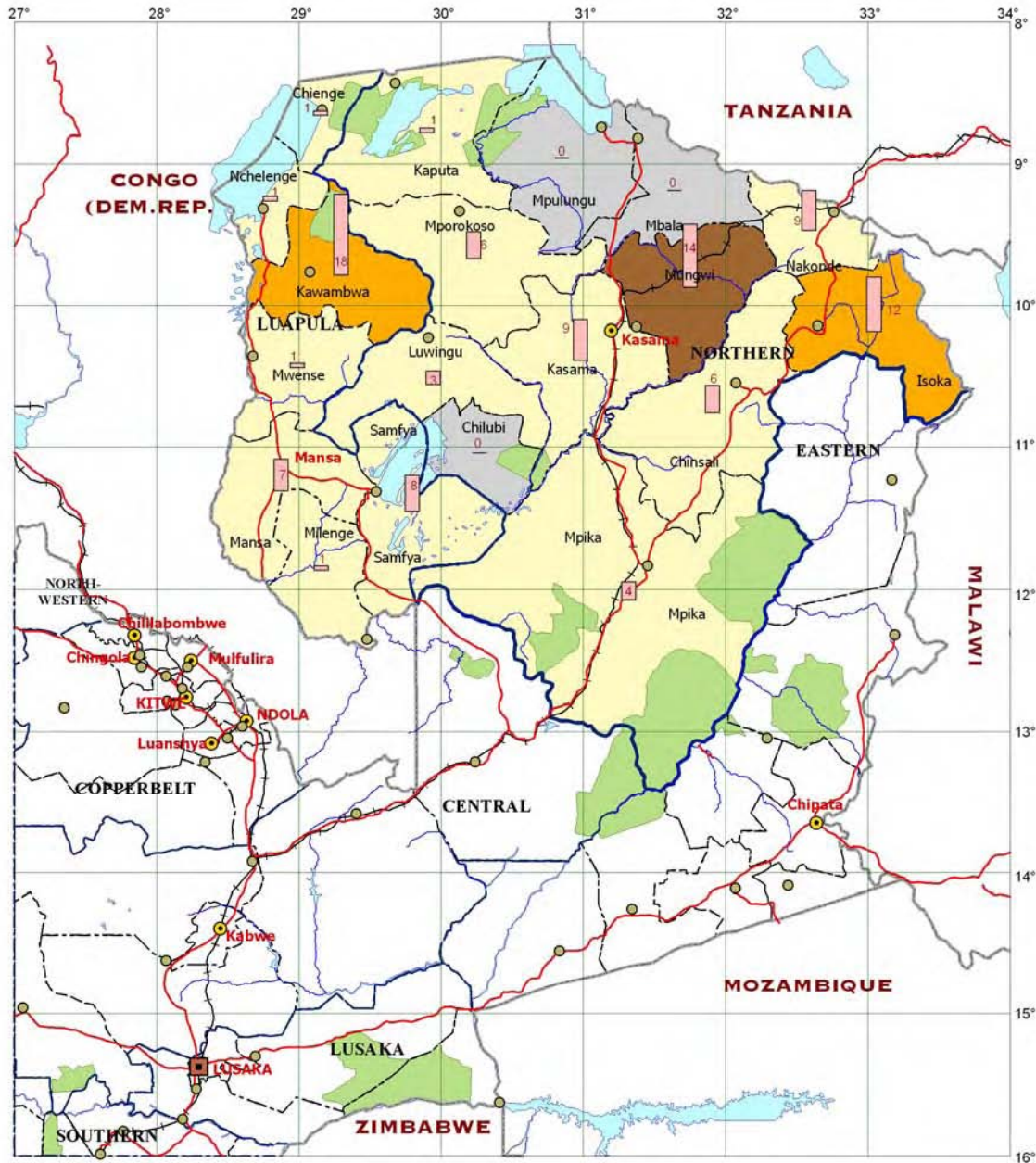


EXISTING IRRIGATED AREA

(Unit - ha)

 Permanent Site	 District Boundary
 Temporary Sites	 Province Boundary
 Planned Site	 Study Area
 Existing Irrigated Area (ha)	 National Parks
 0 - 100	 Water
 101 - 200	 Main Road
 201 - 300	 River
 301 - 400	 Coordinate Line (Lat/Long)
 401 - 491	 International Boundary
 Not Available	 Railway
 Capital City	
 Province Cities	
 District Cities	

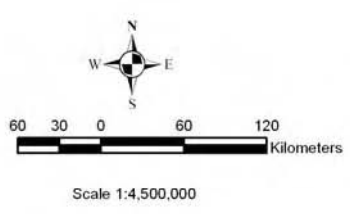
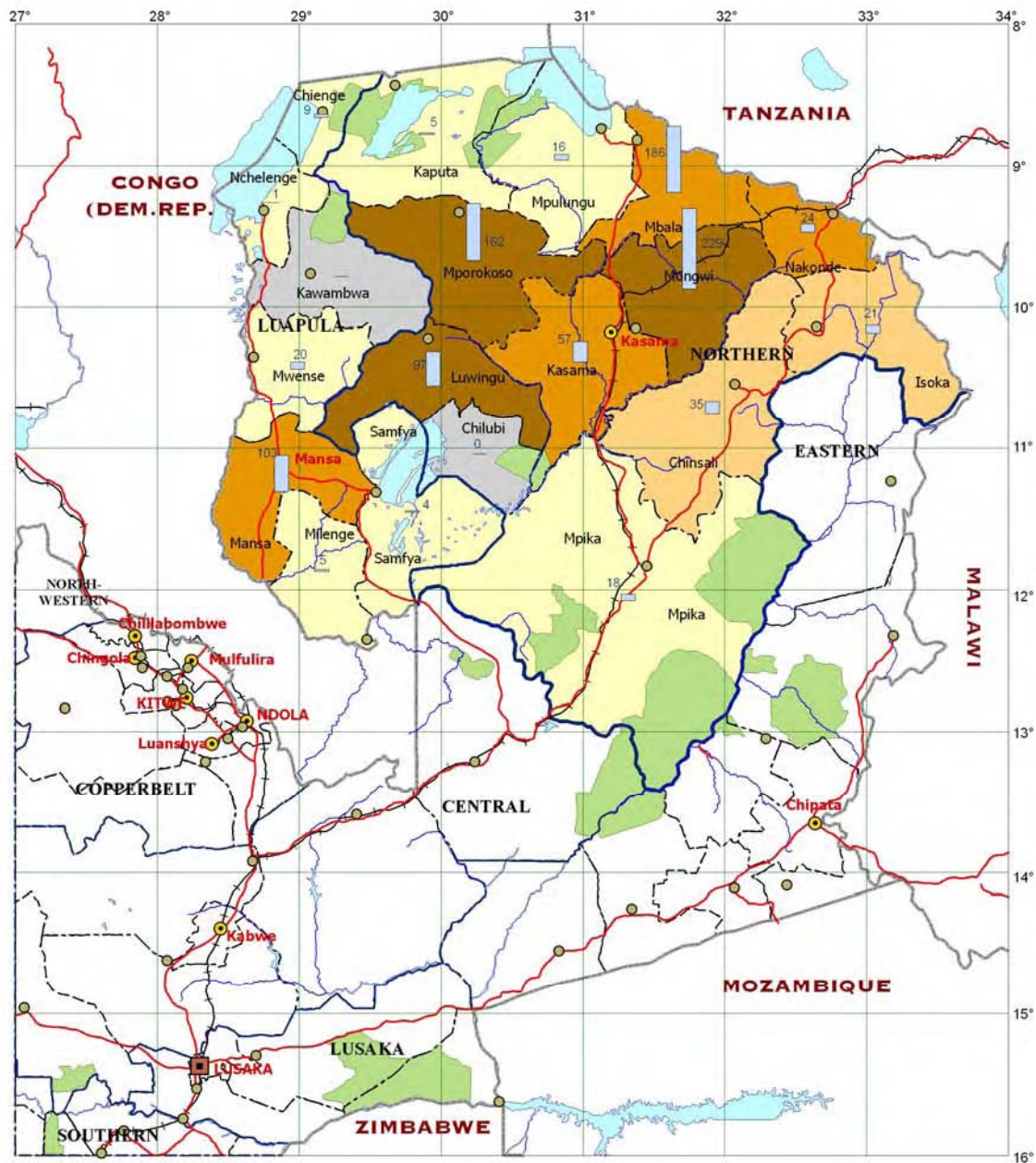
**Map.43 Existing Permanent Sites
(Permanent Sites only) (Nos., ha)**



EXISTING PERMANENT SITES (NOS, ha)

	Nos of Existing Permanent Sites		Main Road
	Existing Permanent Irrigated Area (ha)		River
	1 - 30		Coordinate Line (Lat/Long)
	31 - 60		International Boundary
	61 - 124		Railway
	Not Available		District Boundary
	Capital City		Province Boundary
	Province Cities		Study Area
	District Cities		National Parks
			Water

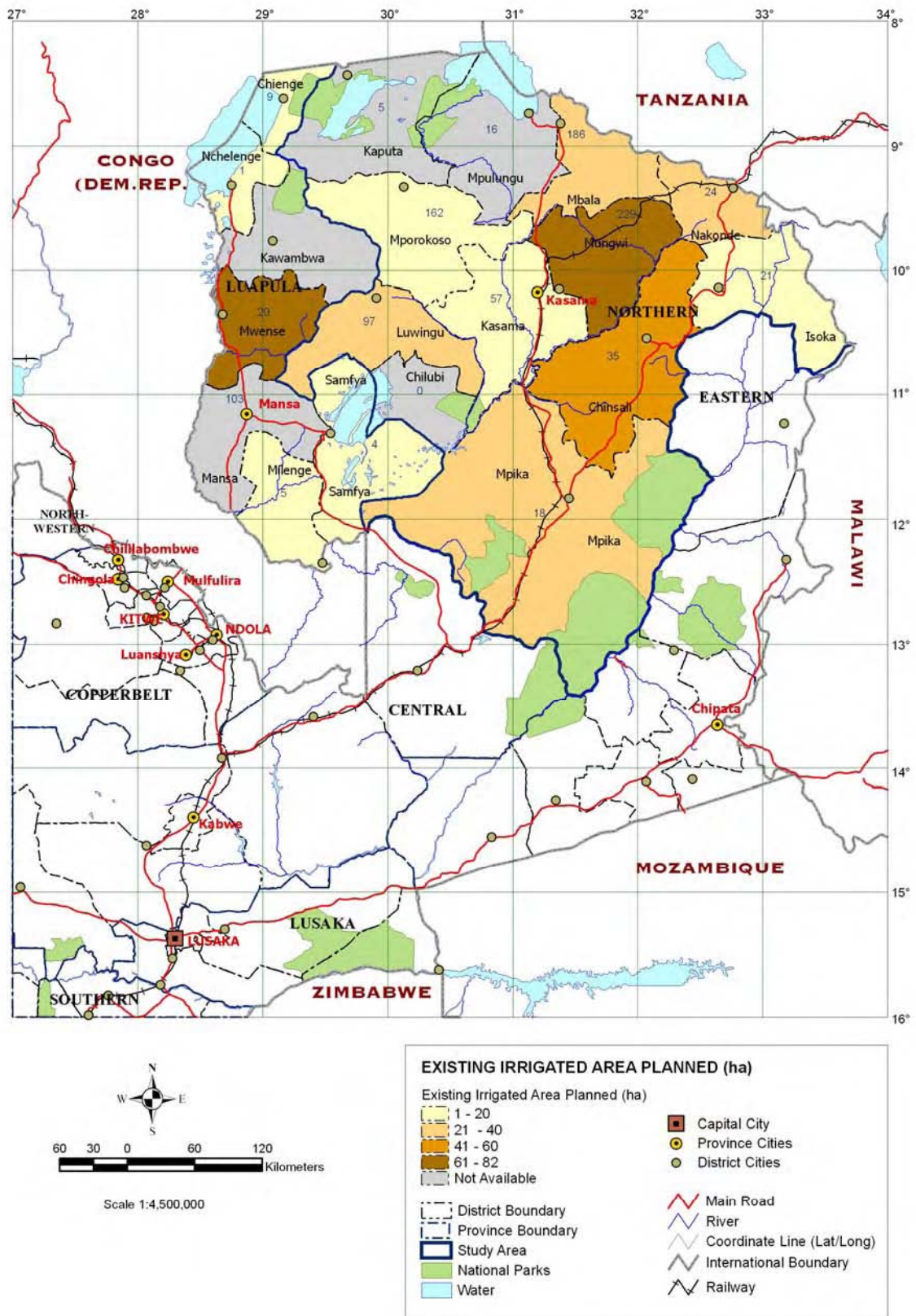
Map.44 Existing Temporary Sites (Temporary Sites only) (Nos., ha)



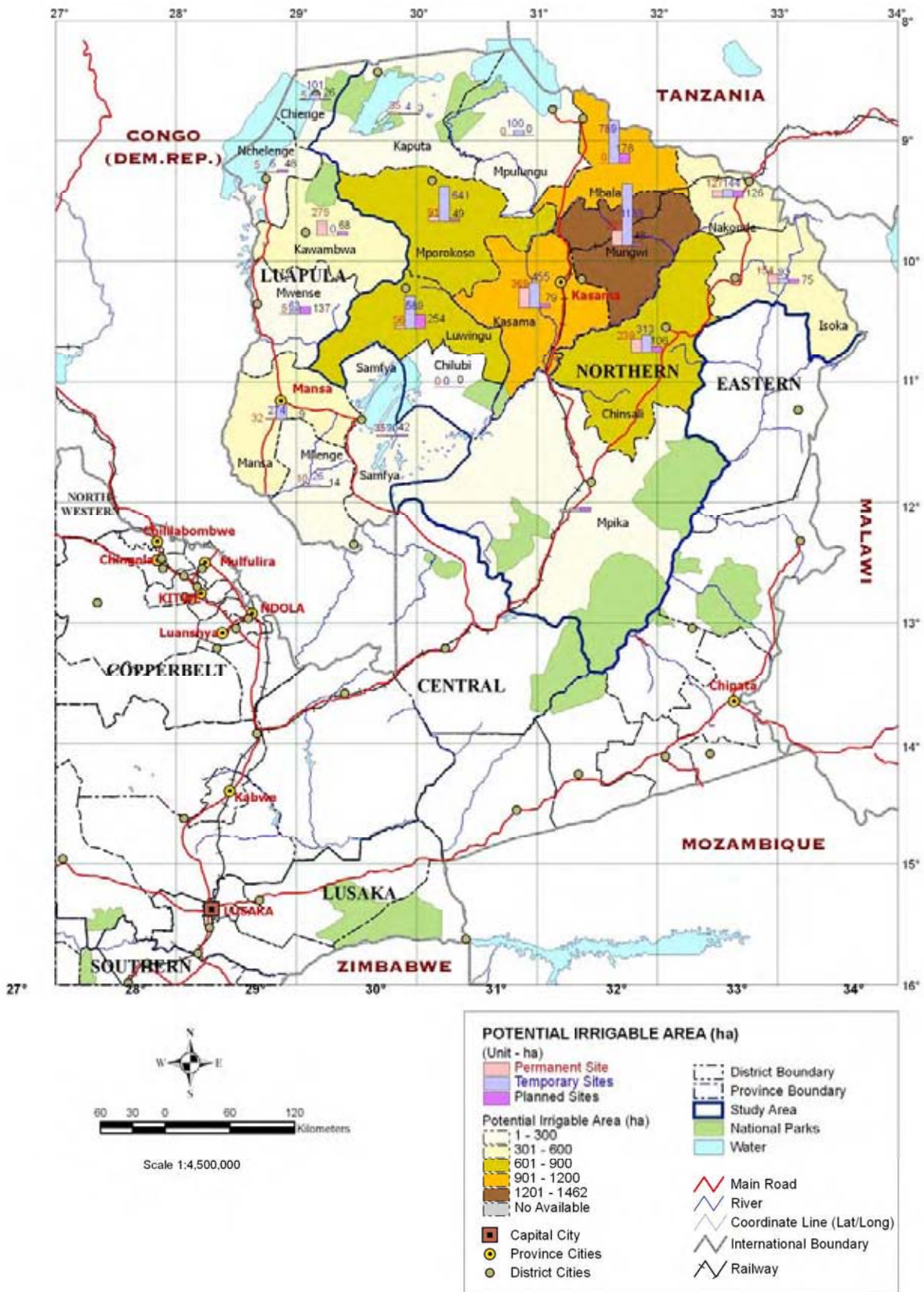
EXISTING TEMPORARY SITES (NOS, ha)

	Nos of Existing Temporary Sites		Main Road
	Existing Temporary Irrigated Area (ha)		River
	1 - 50		Coordinate Line (Lat/Long)
	51 - 100		International Boundary
	101 - 200		Railway
	201 - 435		District Boundary
	Not Available		Province Boundary
	Capital City		Study Area
	Province Cities		National Parks
	District Cities		Water

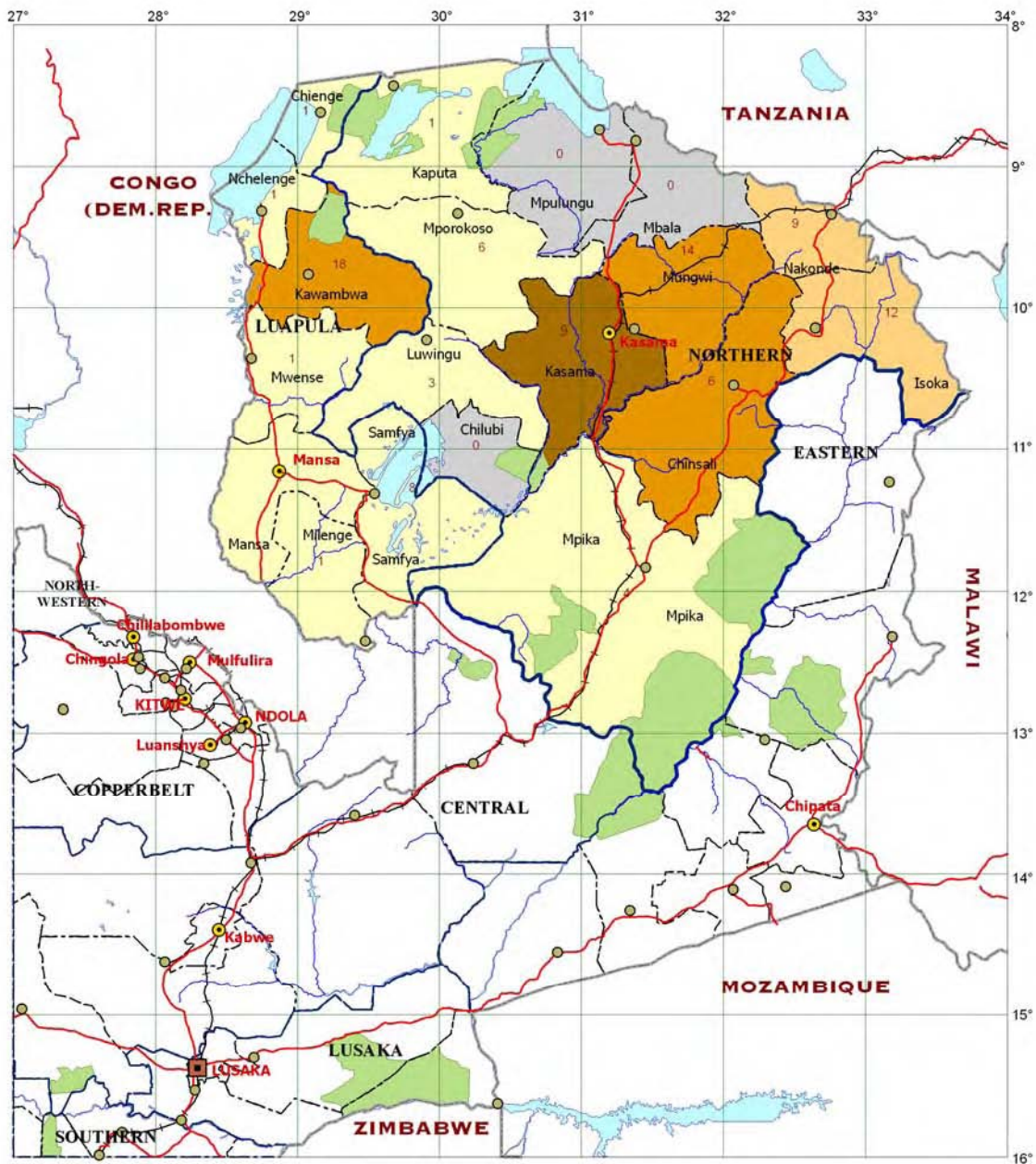
Map.45 Existing Irrigated Area Planned (Planted Sites only) (ha)



Map.46 Potential Irrigable Area (ha)



Map.47 Potential Irrigable Area (Permanent Sites only) (ha)



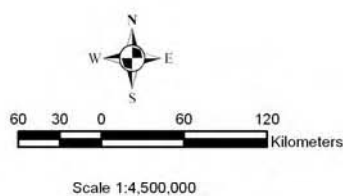
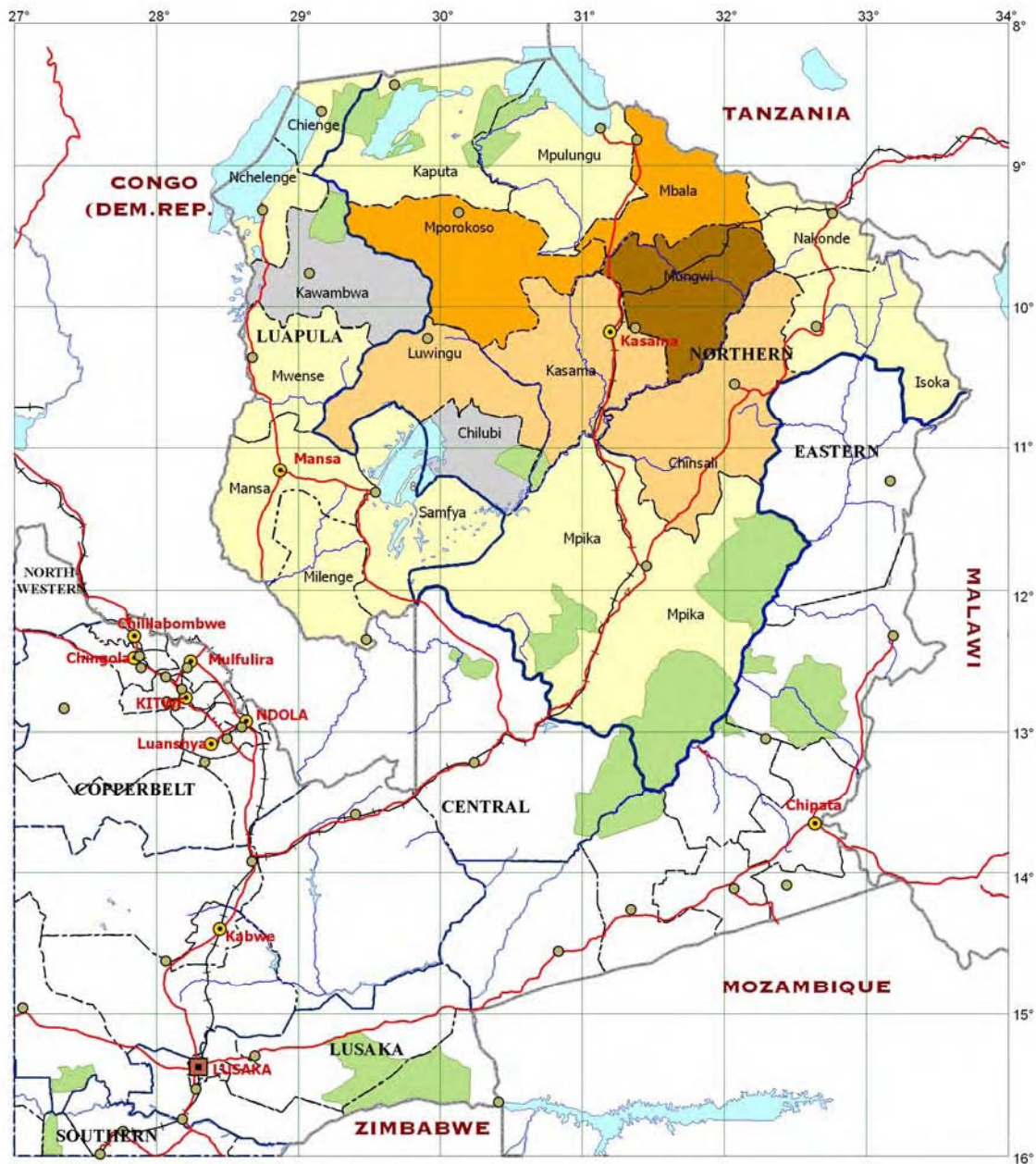
Scale 1:4,500,000

POTENTIAL IRRIGABLE AREA (ha)
Permanent Sites Only

1 - 100	Capital City
101 - 200	Province Cities
210 - 300	District Cities
301 - 369	
Not Available	

District Boundary	Main Road
Province Boundary	River
Study Area	Coordinate Line (Lat/Long)
National Parks	International Boundary
Water	Railway

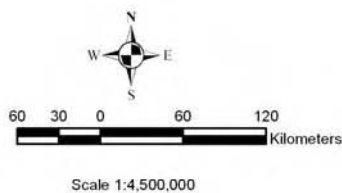
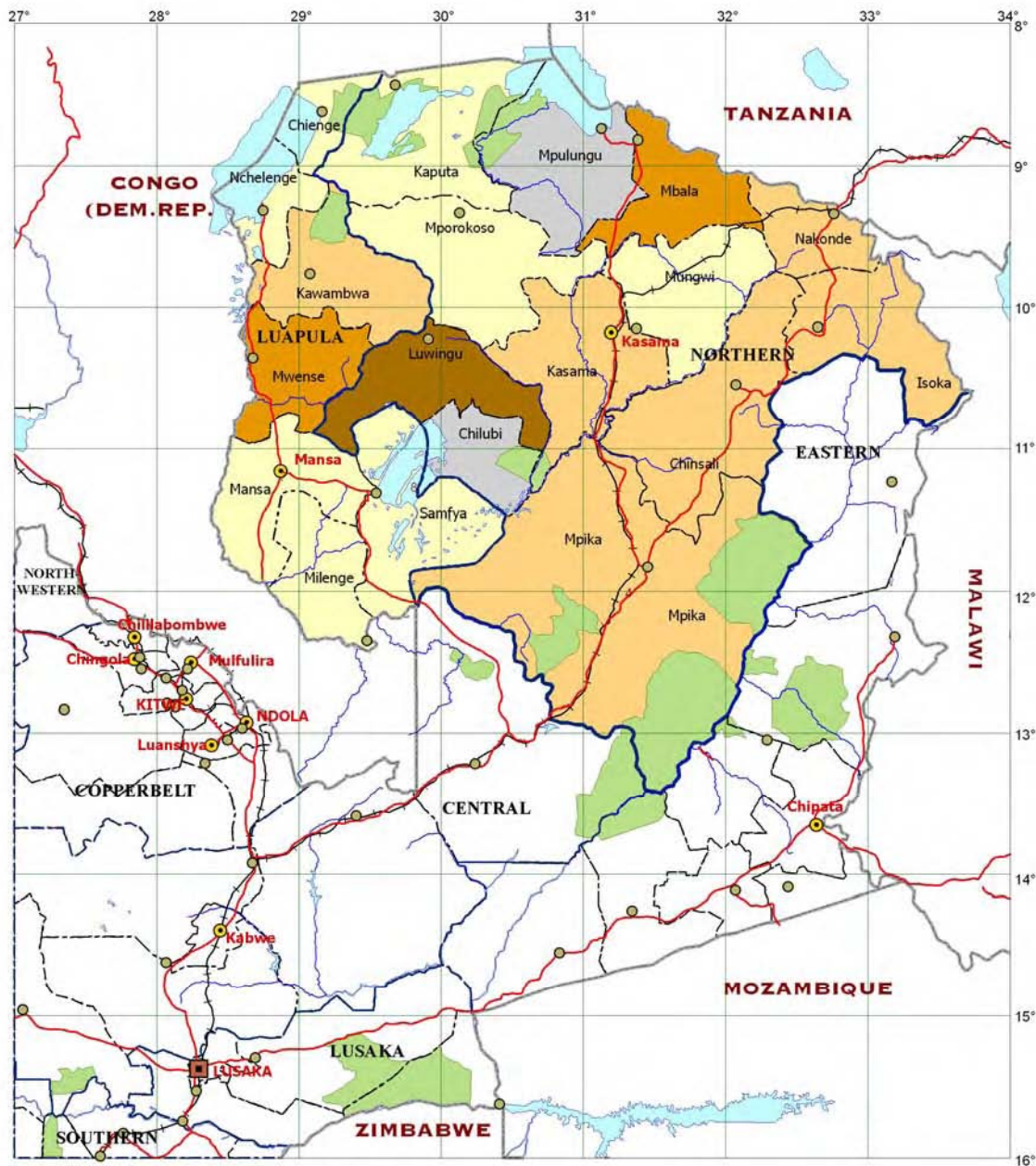
Map.48 Potential Irrigable Area (Temporary Sites only) (ha)



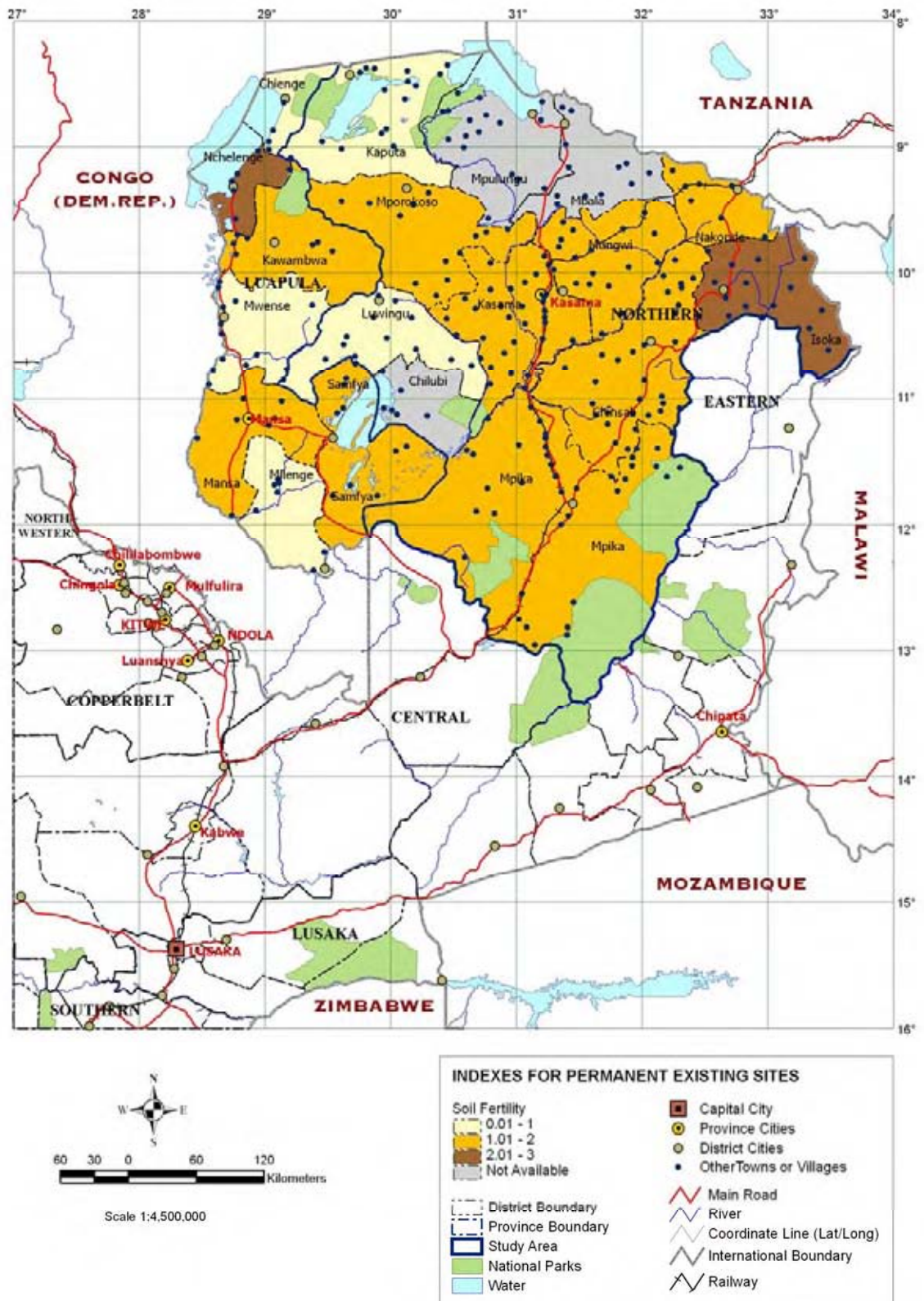
POTENTIAL IRRIGABLE AREA (ha)
Temporary Sites Only

1 - 300	Capital City
301 - 600	Province Cities
601 - 900	District Cities
901 - 1133	District Boundary
Not Available	Province Boundary
Main Road	Study Area
River	National Parks
Coordinate Line (Lat/Long)	Water
International Boundary	
Railway	

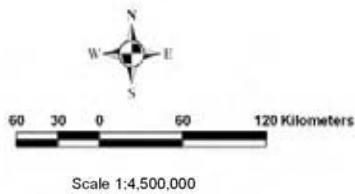
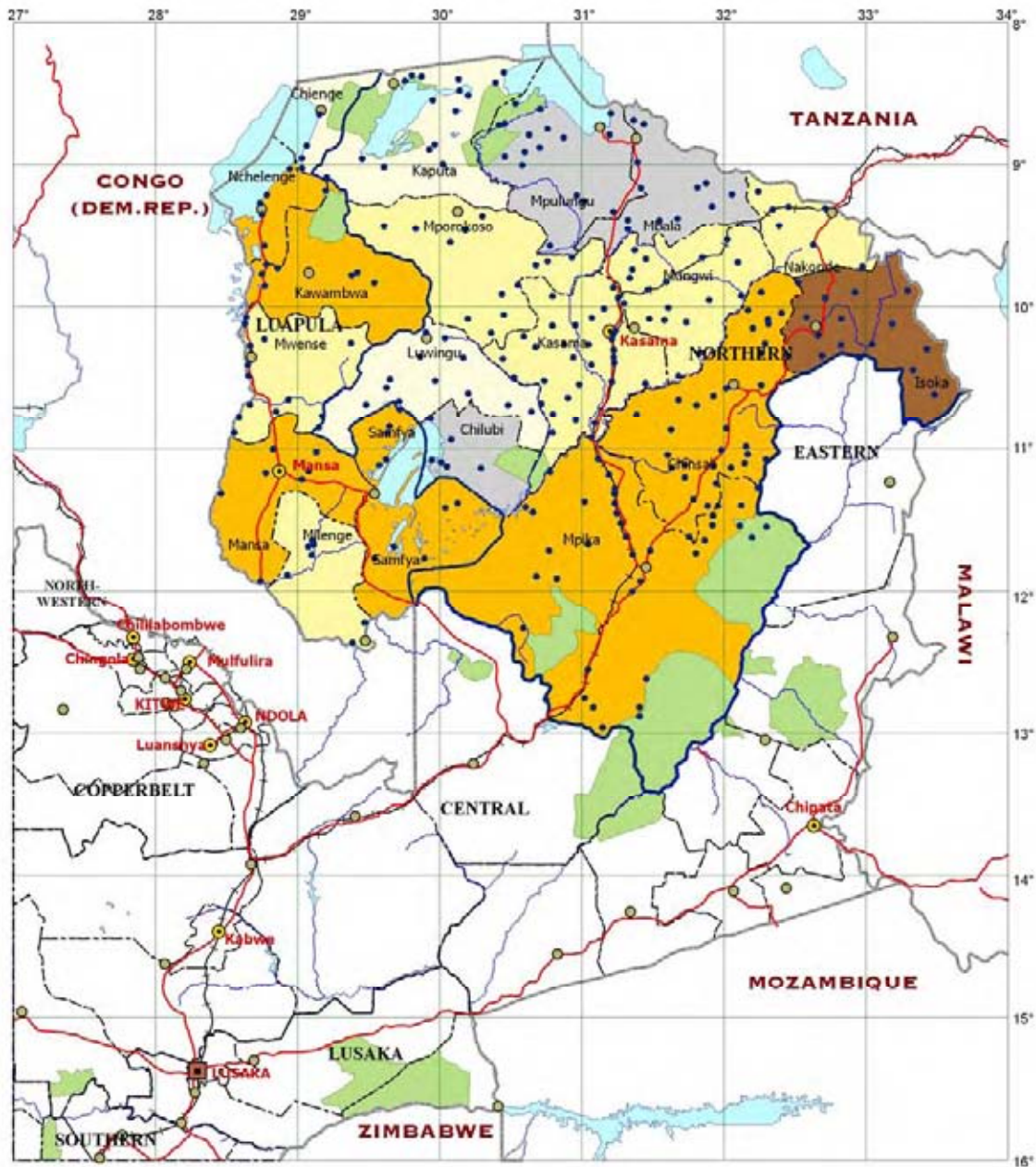
Map.49 Potential Irrigable Area (Planned Sites only) (ha)



Map.50 Indexes for Permanent Existing Sites, Soil Fertility



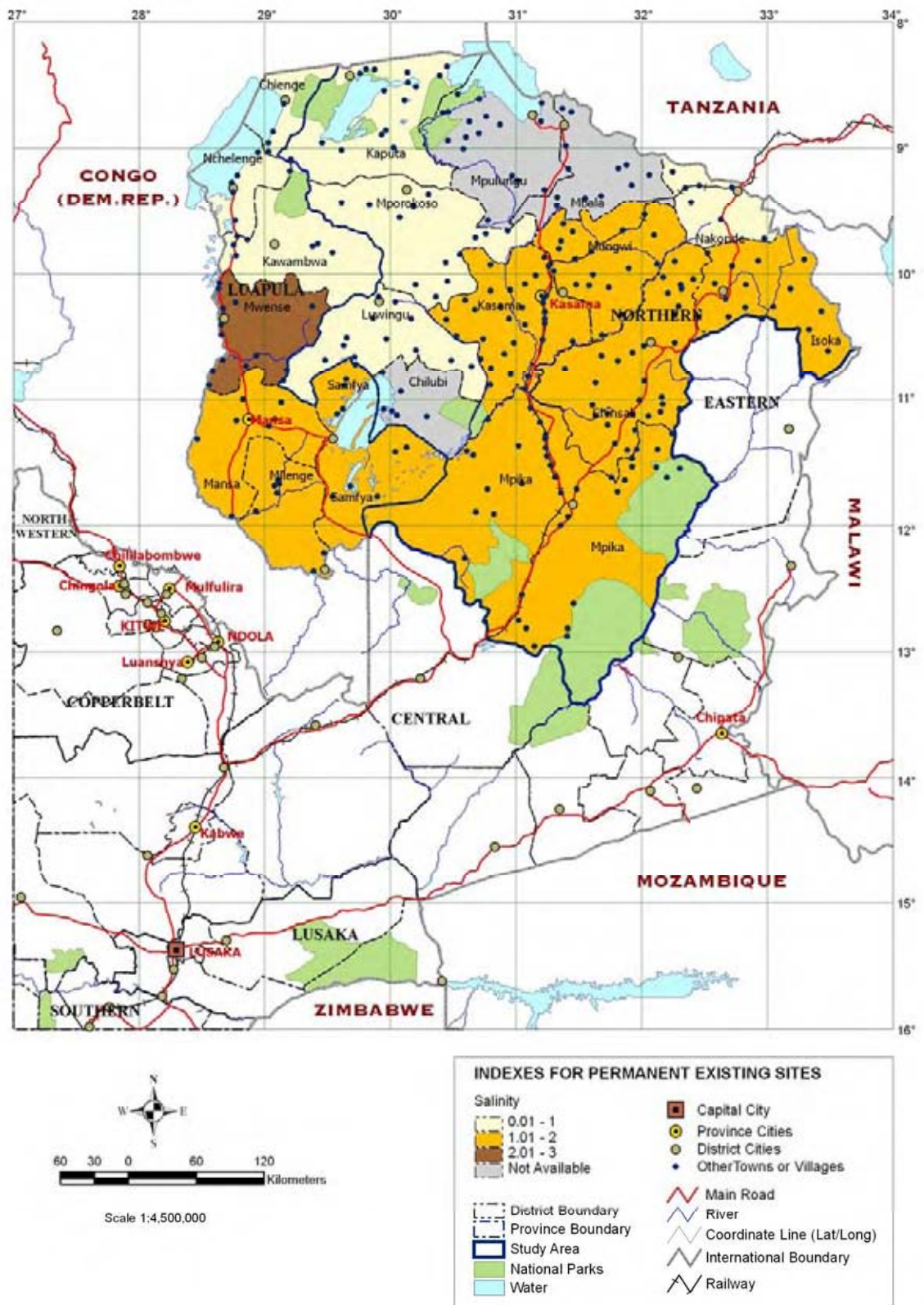
Map.51 Indexes for Permanent Existing Sites, Acidity



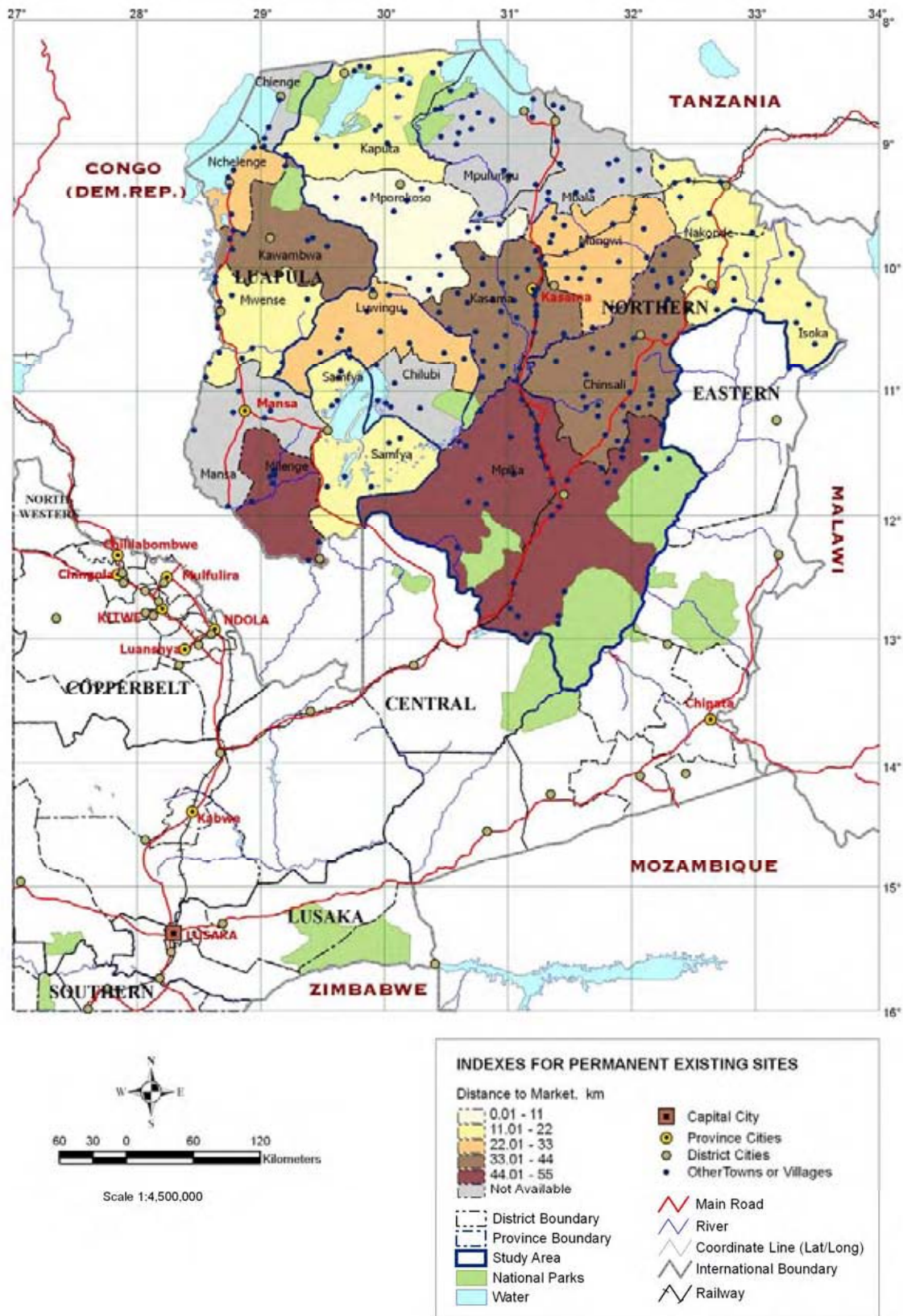
INDEXES FOR PERMANENT EXISTING SITES

Acidity	
	0.01 - 1
	1.01 - 2
	2.01 - 3
	3.01 - 3.58
	Not Available
	District Boundary
	Province Boundary
	Study Area
	National Parks
	Water
	Capital City
	Province Cities
	District Cities
	Other Towns or Villages
	Main Road
	River
	Coordinate Line (Lat/Long)
	International Boundary
	Railway

Map.52 Indexes for Permanent Existing Sites, Salinity



Map.53 Indexes for Permanent Existing Sites, Distance to Market



**Map.54 Indexes for Permanent Existing Sites,
Road Condition**

