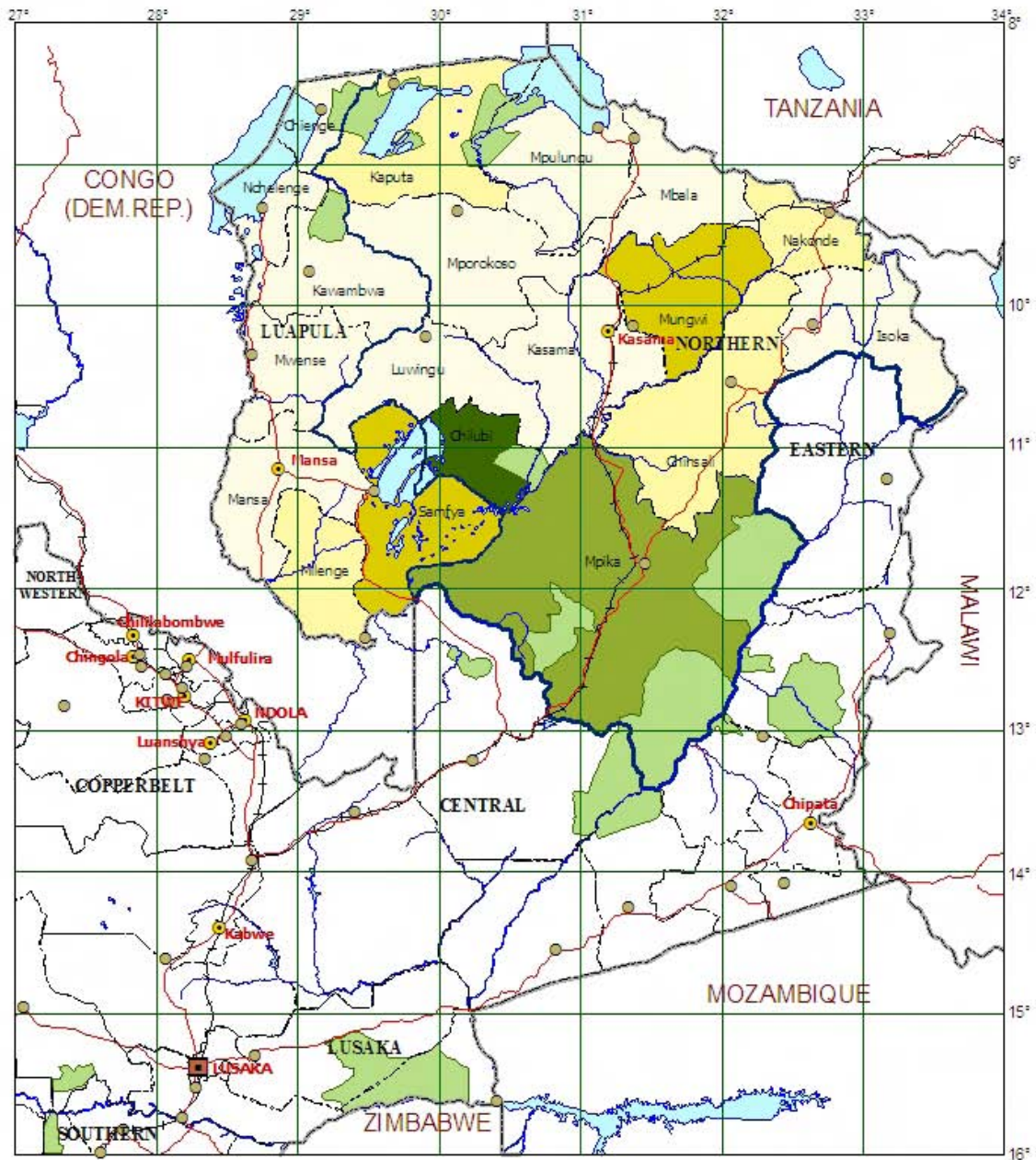


**Map.21 District-wise Area of Land Cover, Wetland Area per Household (ha/HH)**



Scale 1:4,500,000

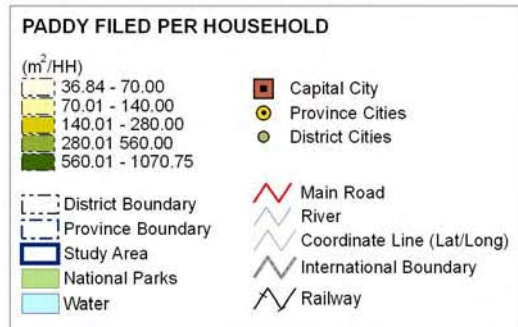
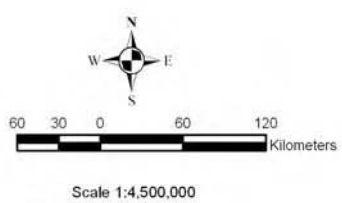
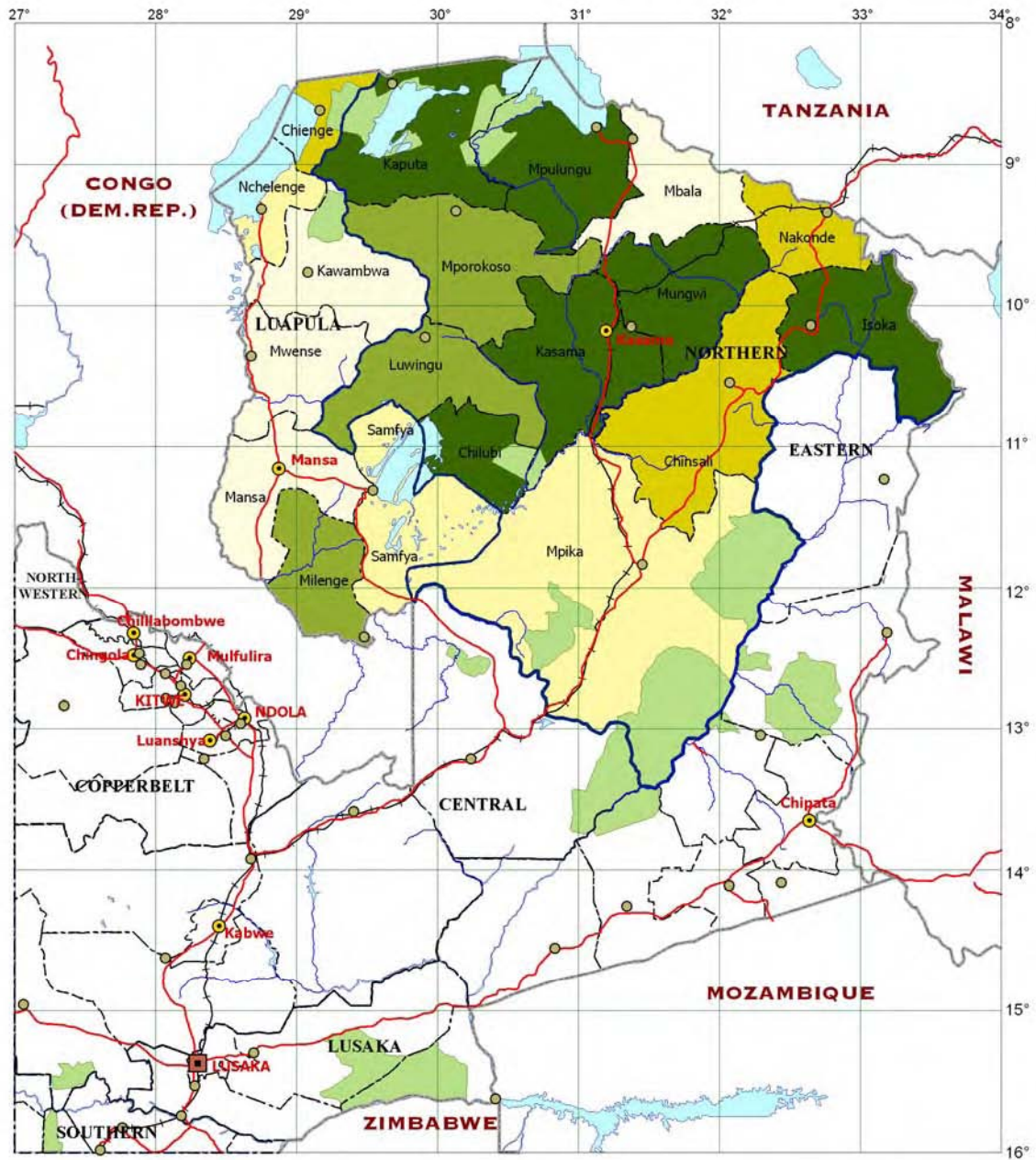
**WETLAND AREA PER HOUSEHOLD**  
(ha/HH)

- 0.86 - 6.00
- 6.01 - 12.00
- 12.01 - 18.00
- 18.01 - 24.00
- 24.01 - 29.62

- Capital City
- Province Cities
- District Cities

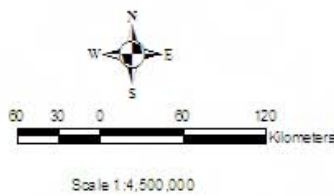
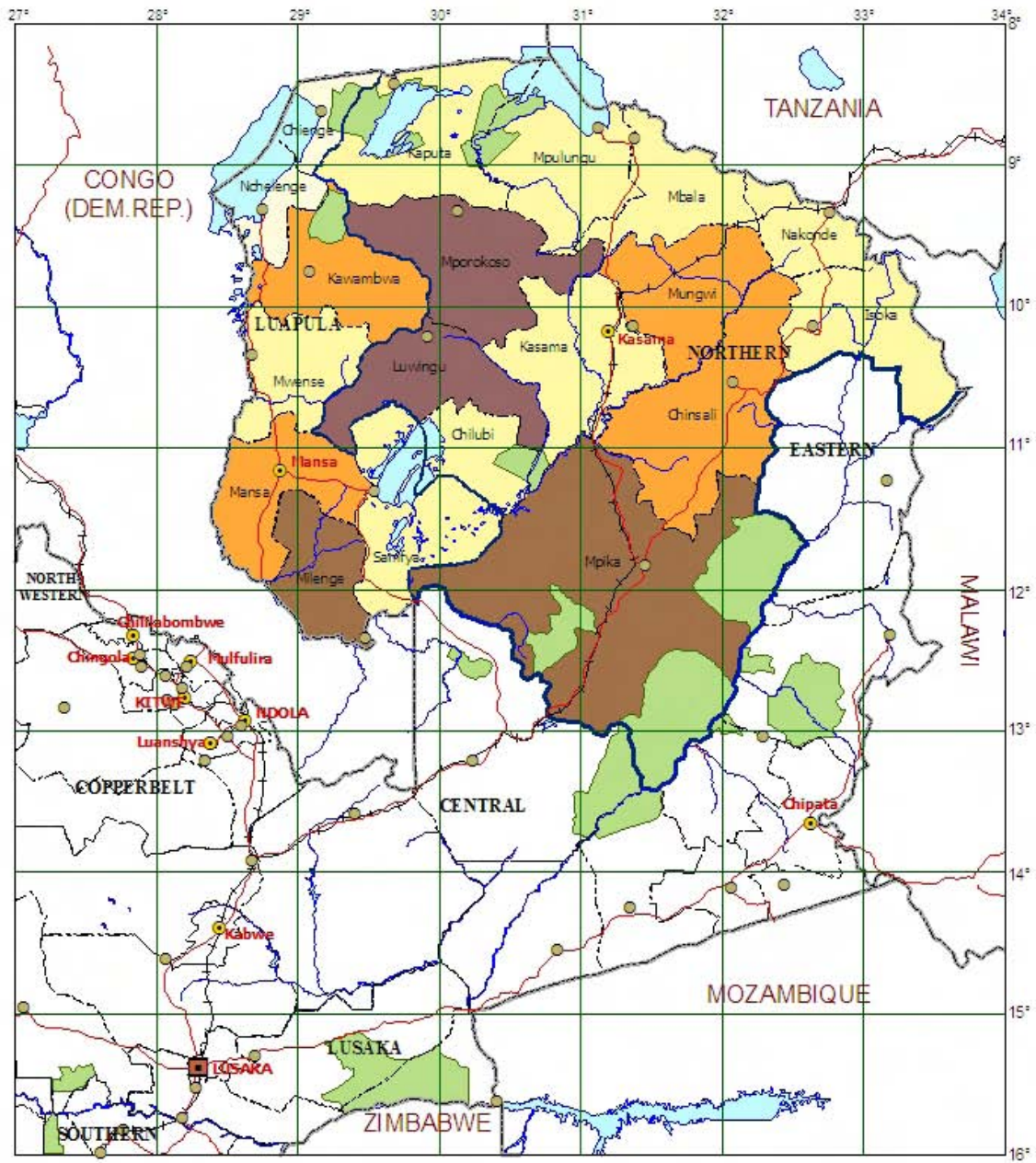
- District Boundary
- Province Boundary
- Study Area
- National Parks
- Water
- Main Road
- River
- Coordinate Line (Lat/Long)
- International Boundary
- Railway

**Map.22 District-wise Area of Land Cover, Paddy Field per Household (m<sup>2</sup>/HH)**





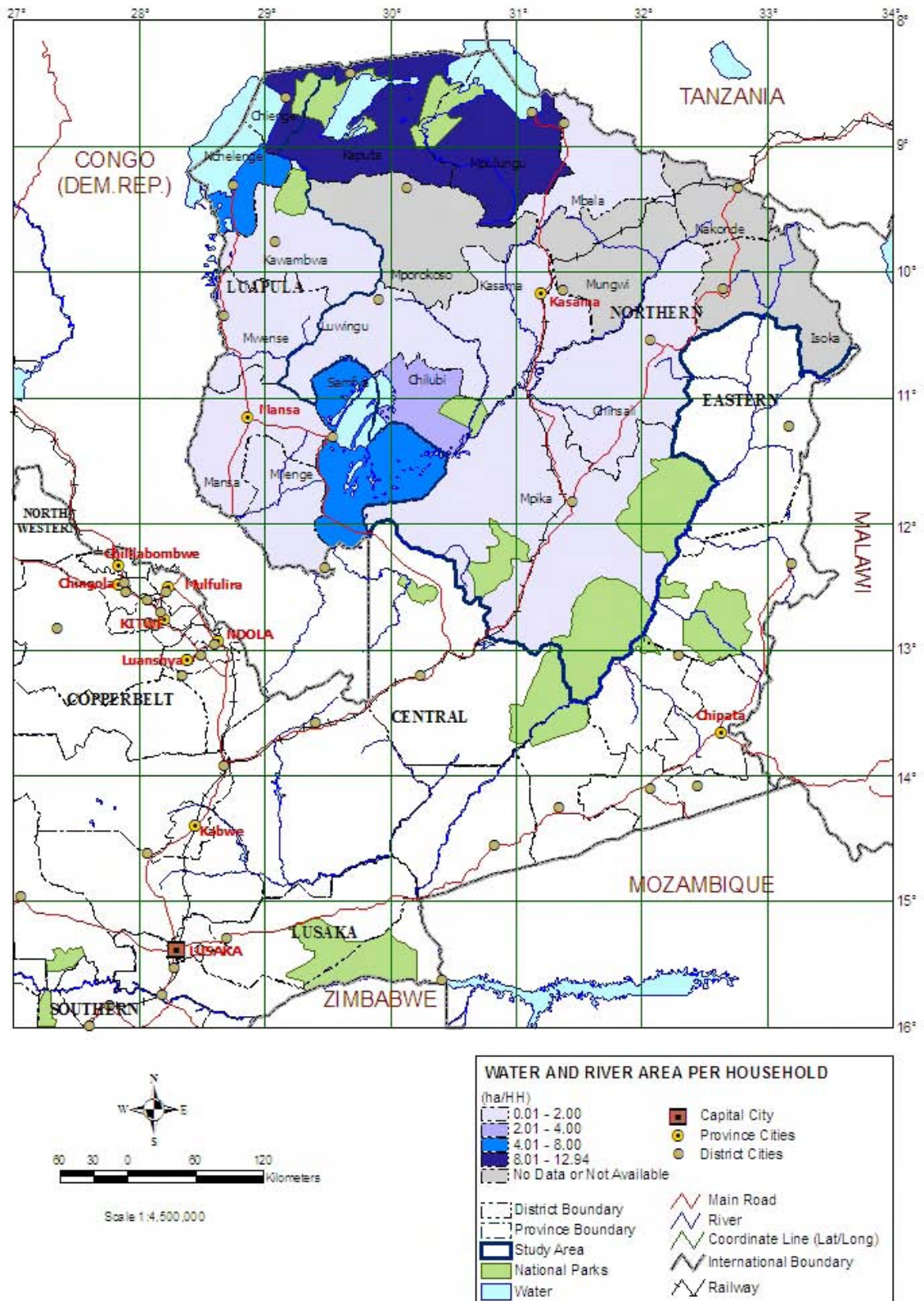
**Map.23 District-wise Area of Land Cover, Upland Area per Household (ha/HH)**



**UPLAND AREA PER HOUSEHOLD**  
(ha/HH)

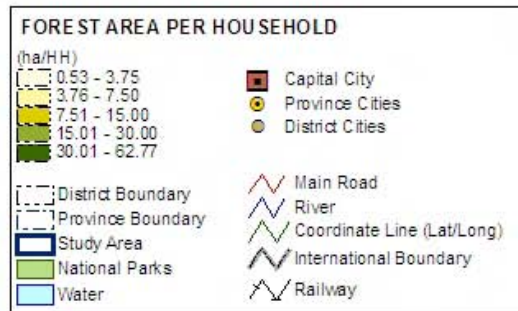
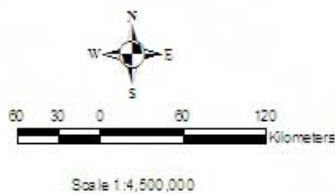
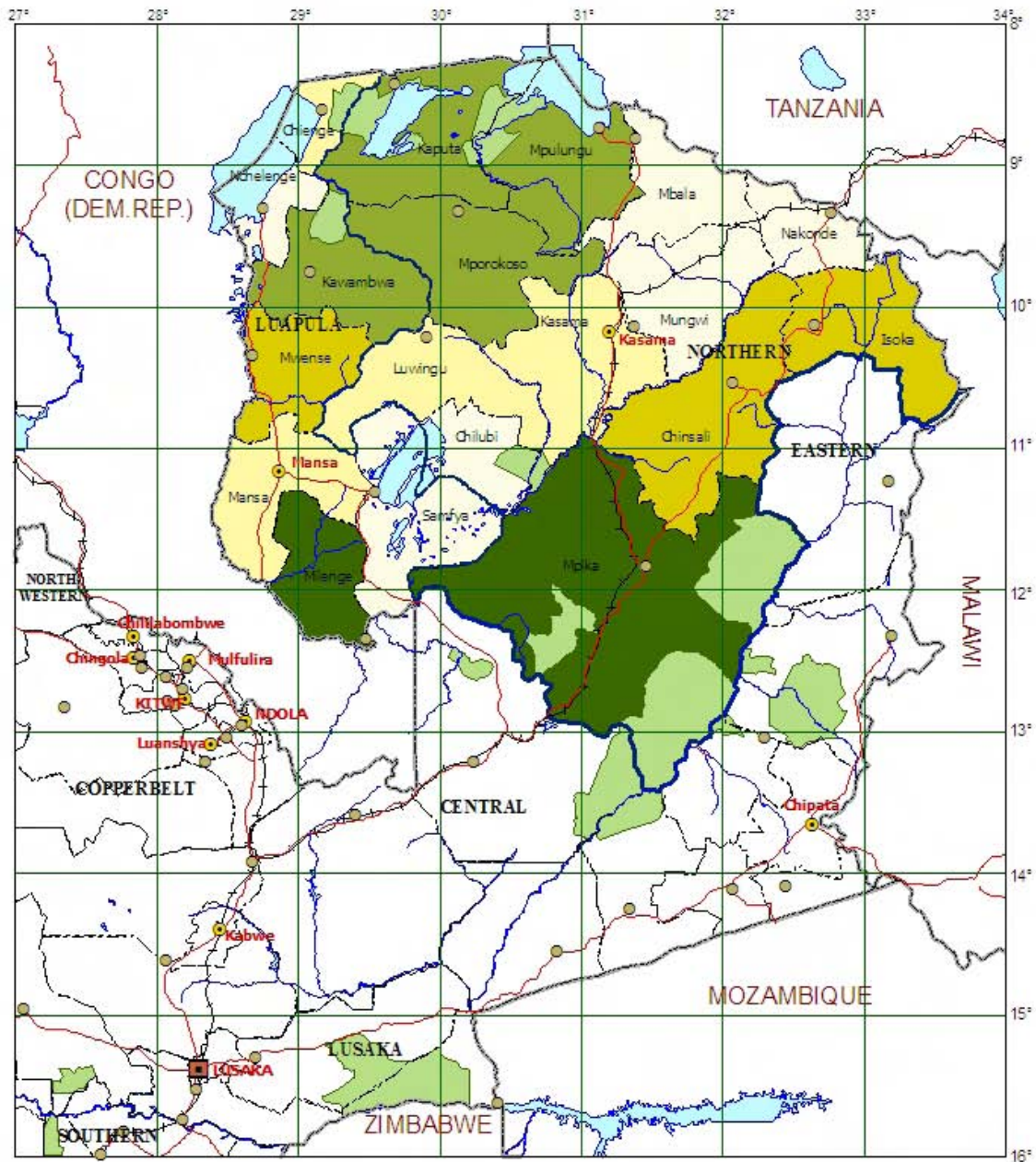
2.10 - 4.00	Capital City
4.01 - 8.00	Province Cities
8.01 - 12.00	District Cities
12.01 - 16.00	Main Road
16.01 - 19.81	River
	Coordinate Line (Lat/Long)
	International Boundary
	Railway
	District Boundary
	Province Boundary
	Study Area
	National Parks
	Water

**Map.24 District-wise Area of Land Cover, Water and River Area per Household (ha/HH)**

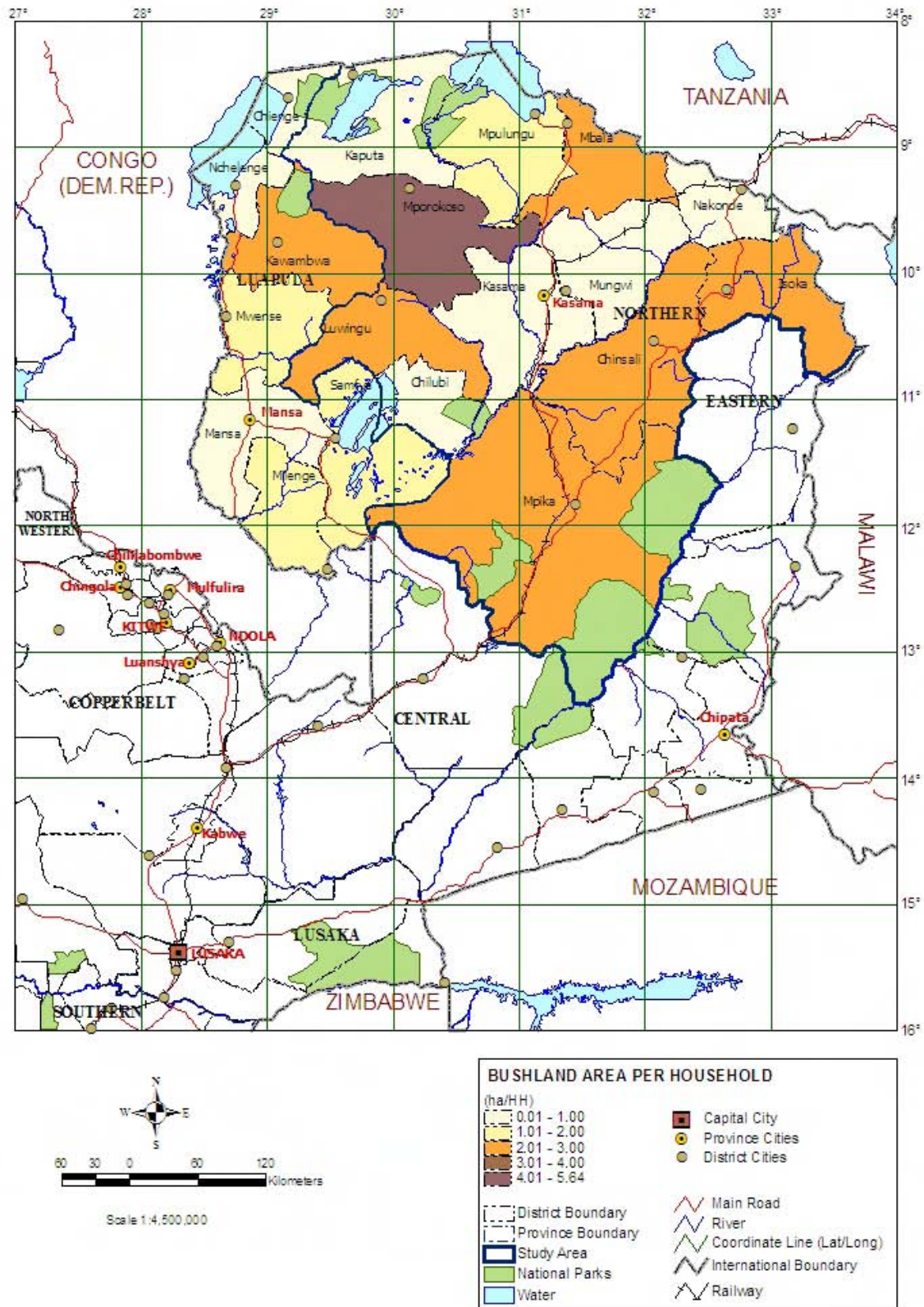




**Map.25 District-wise Area of Land Cover, Forest Area per Household (ha/HH)**

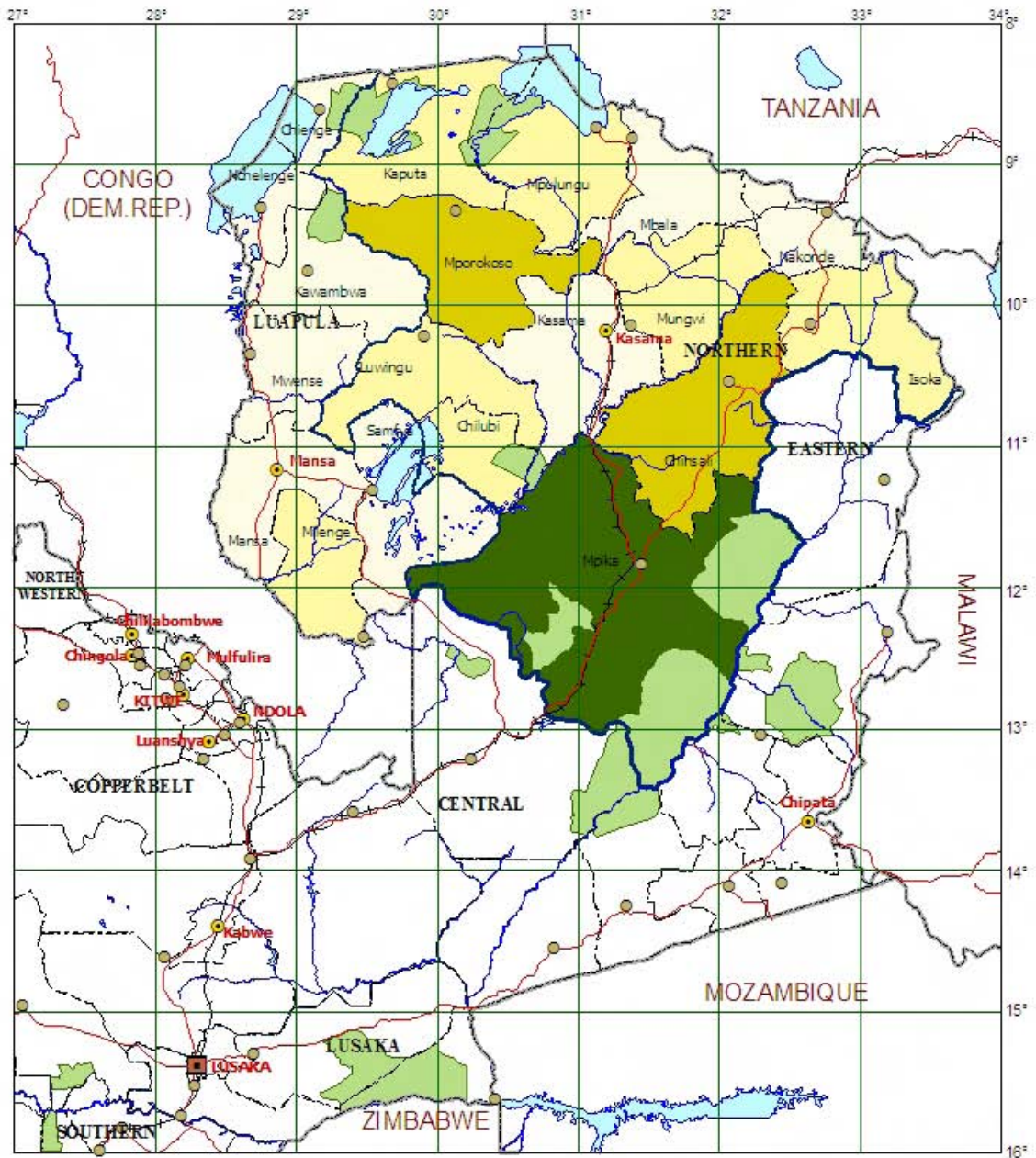


**Map.26 District-wise Area of Land Cover, Bush Land Area per Household (ha/HH)**





**Map.27 District-wise Area of Land Cover, Grass Land Area per Household (ha/HH)**

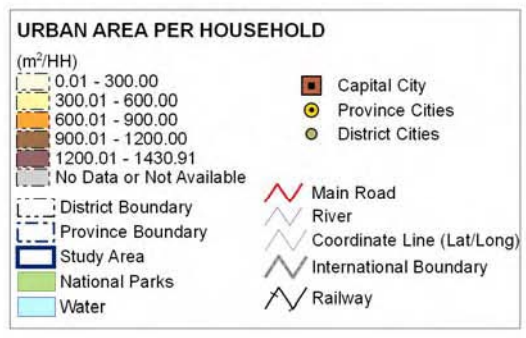
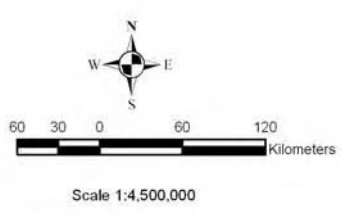
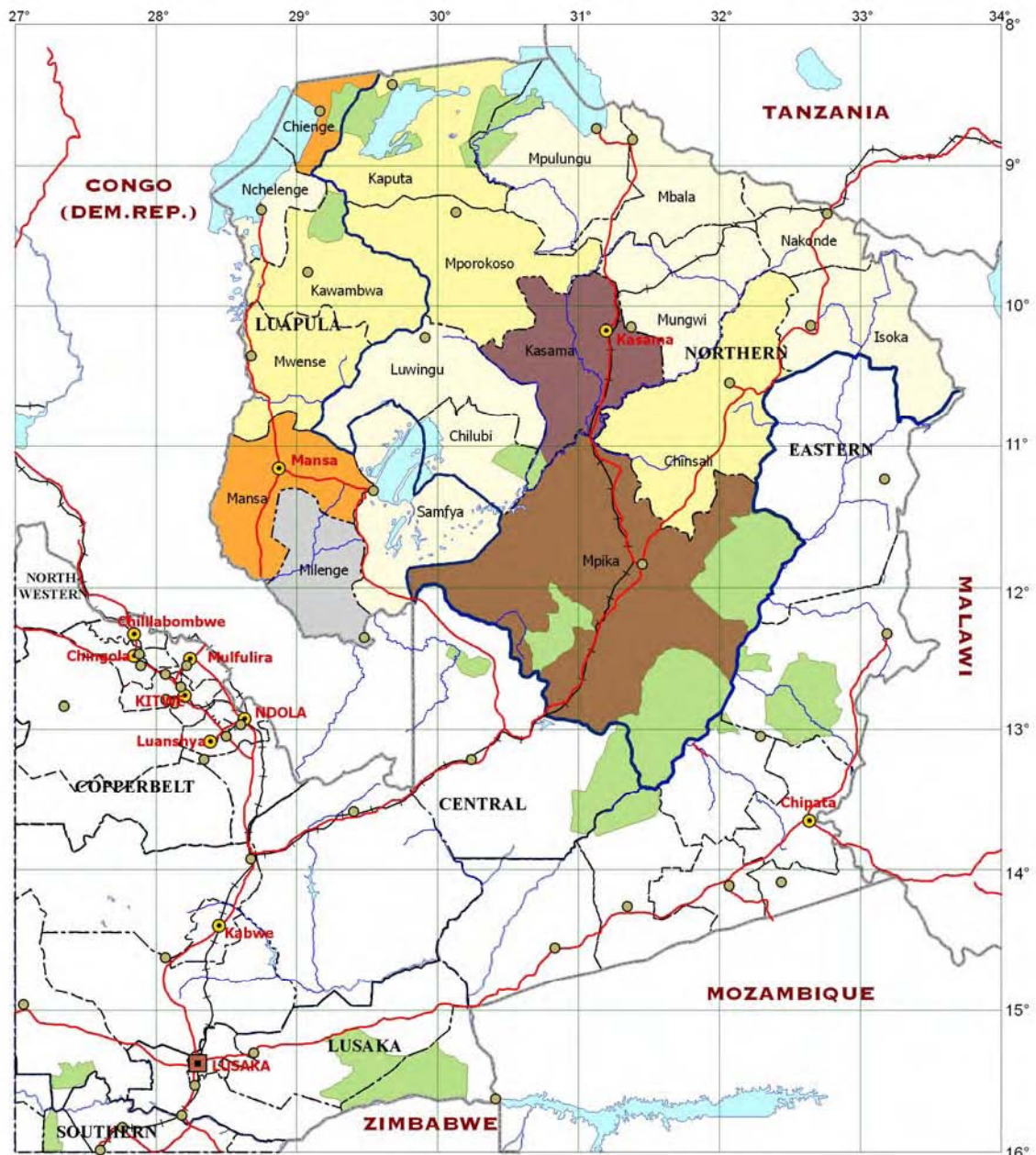


Scale 1:4,500,000

**GRASSLAND AREA PER HOUSEHOLD**  
(ha/HH)

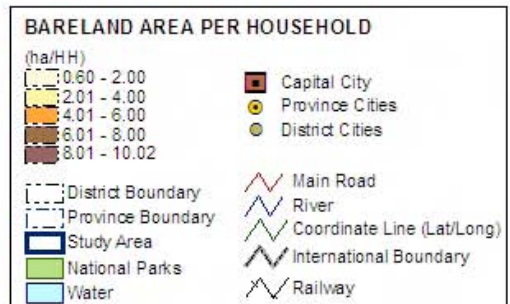
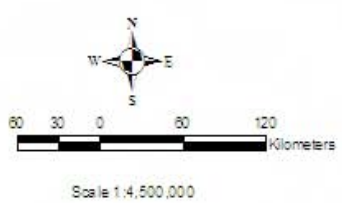
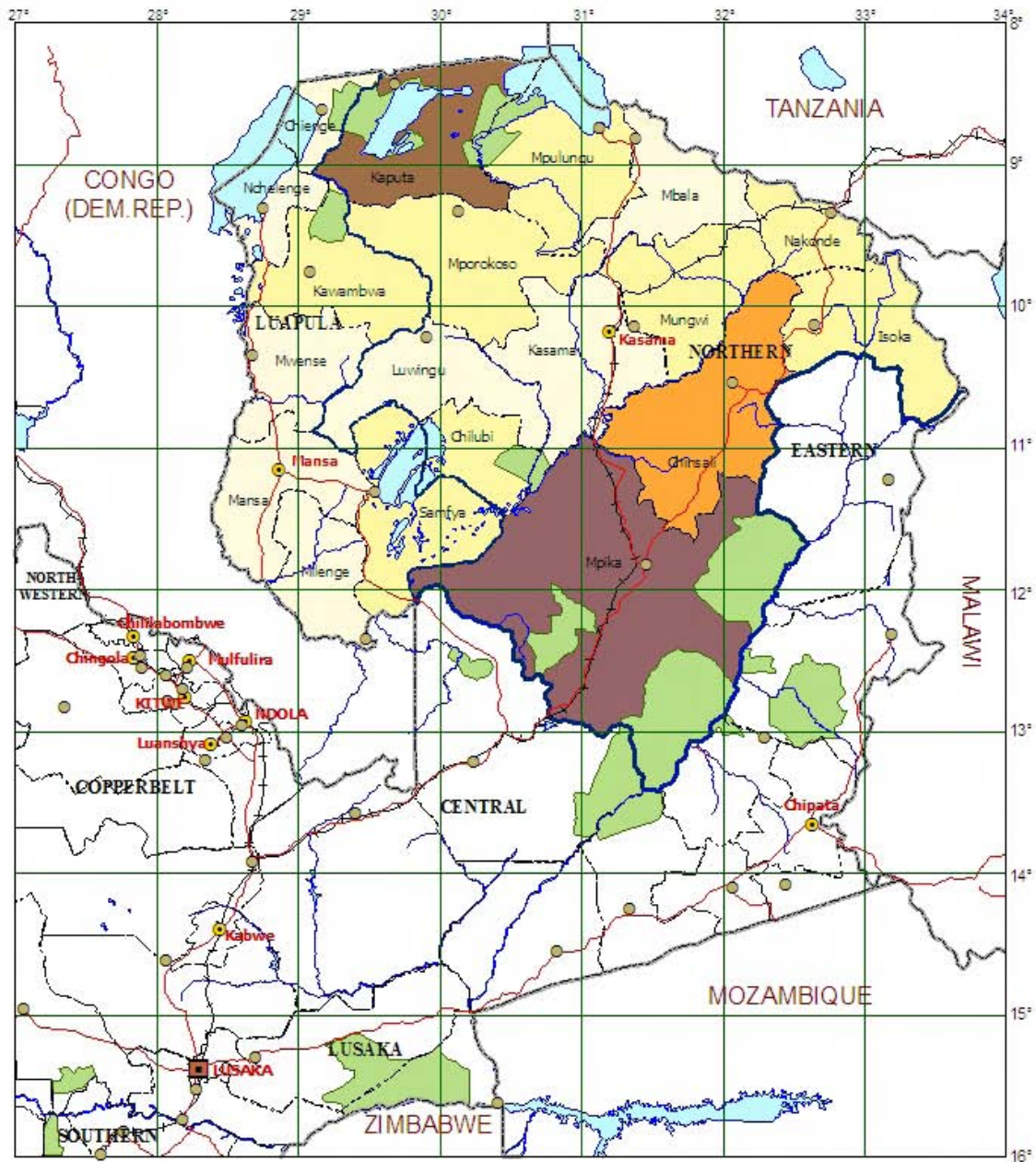
	3.62 - 20.00	<ul style="list-style-type: none"> <li><span style="display: inline-block; width: 10px; height: 10px; background-color: #800000; border: 1px solid black; margin-right: 5px;"></span> Capital City</li> <li><span style="display: inline-block; width: 10px; height: 10px; background-color: #ffa500; border: 1px solid black; margin-right: 5px;"></span> Province Cities</li> <li><span style="display: inline-block; width: 10px; height: 10px; background-color: #808000; border: 1px solid black; margin-right: 5px;"></span> District Cities</li> <li><span style="border-bottom: 1px dashed black; width: 20px; margin-right: 5px;"></span> District Boundary</li> <li><span style="border-bottom: 1px dotted black; width: 20px; margin-right: 5px;"></span> Province Boundary</li> <li><span style="border: 2px solid blue; width: 20px; height: 10px; margin-right: 5px;"></span> Study Area</li> <li><span style="display: inline-block; width: 10px; height: 10px; background-color: #90ee90; border: 1px solid black; margin-right: 5px;"></span> National Parks</li> <li><span style="display: inline-block; width: 10px; height: 10px; background-color: #add8e6; border: 1px solid black; margin-right: 5px;"></span> Water</li> <li><span style="border-bottom: 1px solid red; width: 20px; margin-right: 5px;"></span> Main Road</li> <li><span style="border-bottom: 1px solid blue; width: 20px; margin-right: 5px;"></span> River</li> <li><span style="border-bottom: 1px solid green; width: 20px; margin-right: 5px;"></span> Coordinate Line (Lat/Long)</li> <li><span style="border-bottom: 1px solid black; width: 20px; margin-right: 5px;"></span> International Boundary</li> <li><span style="border-bottom: 1px solid black; width: 20px; margin-right: 5px;"></span> Railway</li> </ul>
	20.01 - 30.00	
	30.01 - 40.00	
	40.01 - 50.00	
	50.01 - 66.56	

**Map.28 District-wise Area of Land Cover, Urban Area per Household (m<sup>2</sup>/HH)**

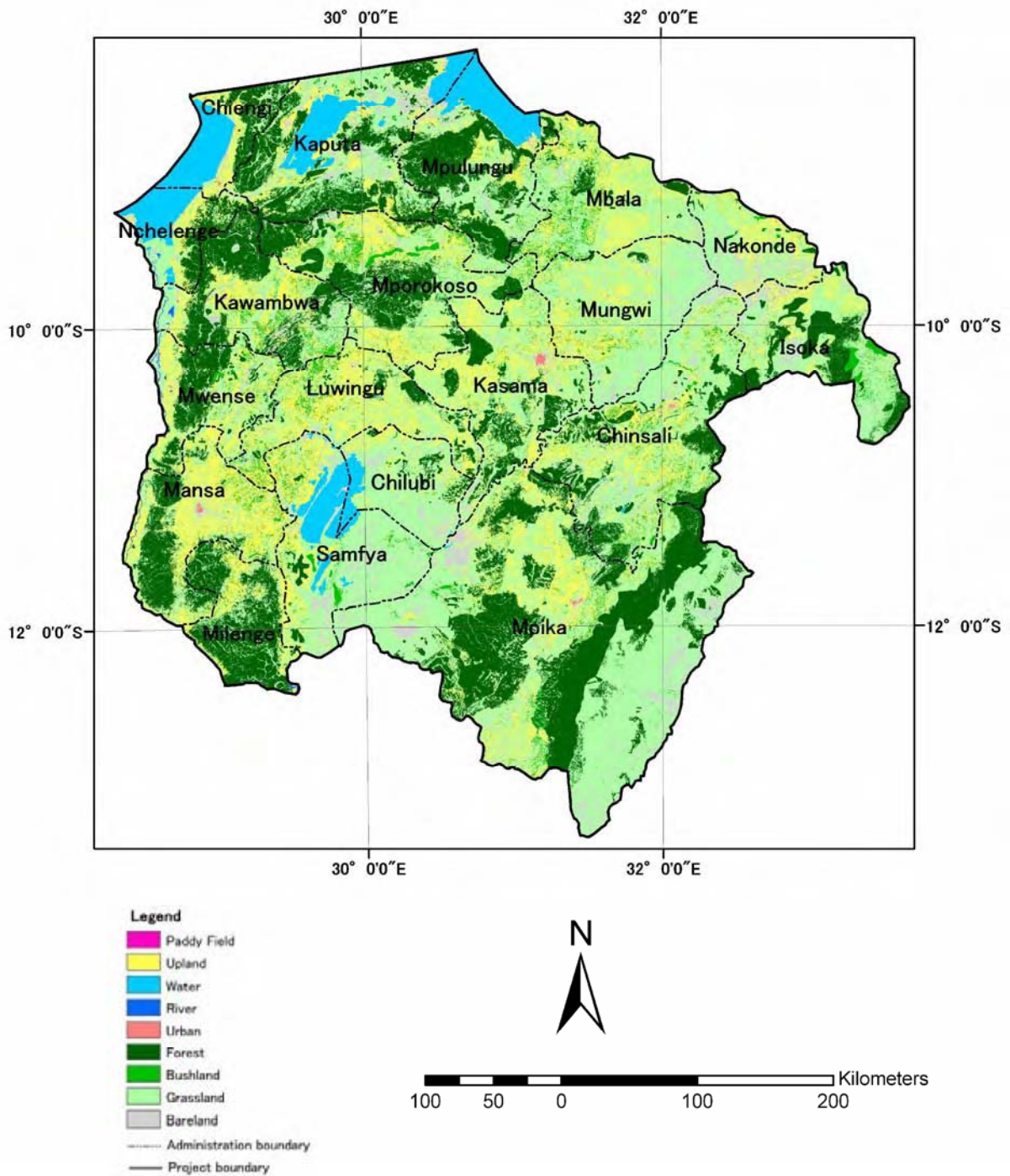




**Map.29 District-wise Area of Land Cover, Bare Land Area per Household (ha/HH)**

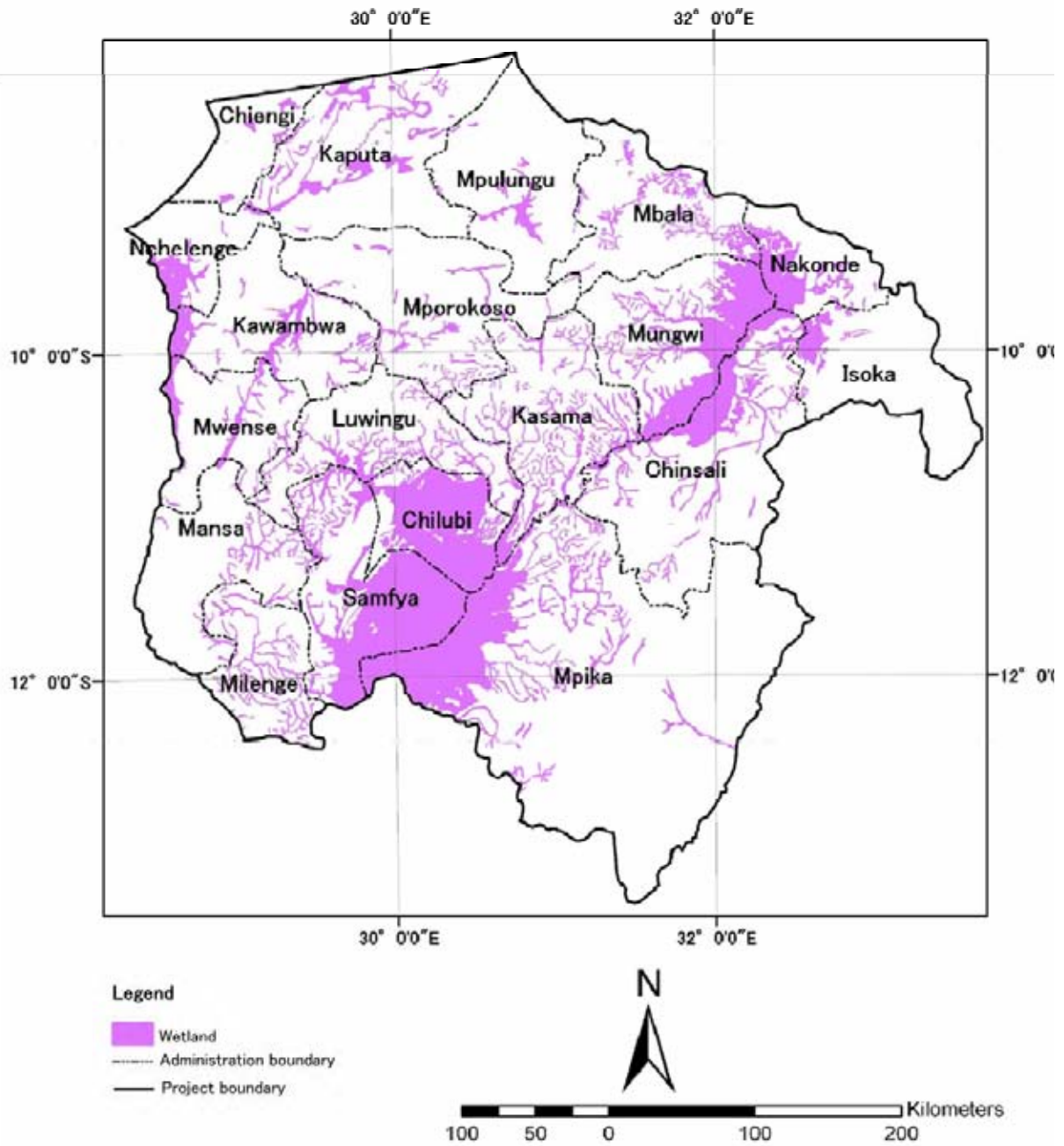


**Map.30 Land Use in Luapula and Northern Provinces**





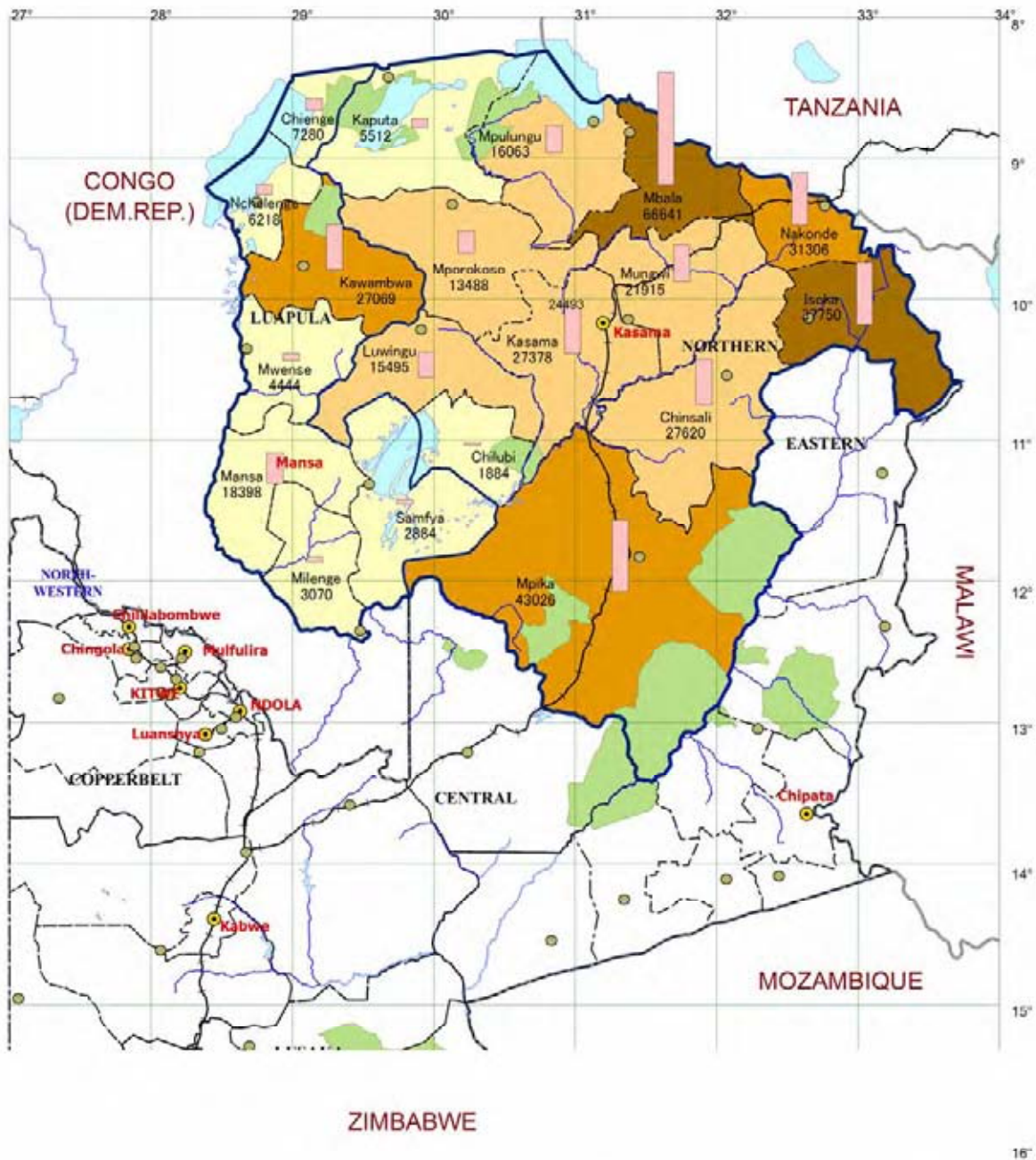
**Map.31 Wet Land in Luapula and Northern Provinces**







**Map.32 Maise Production (2009-2010)**



Scale 1:4,500,000

**Maise Production 2009-2010**

(Unit - ton)

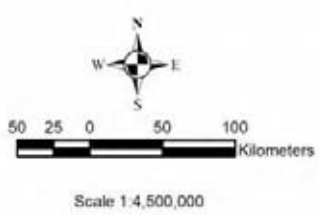
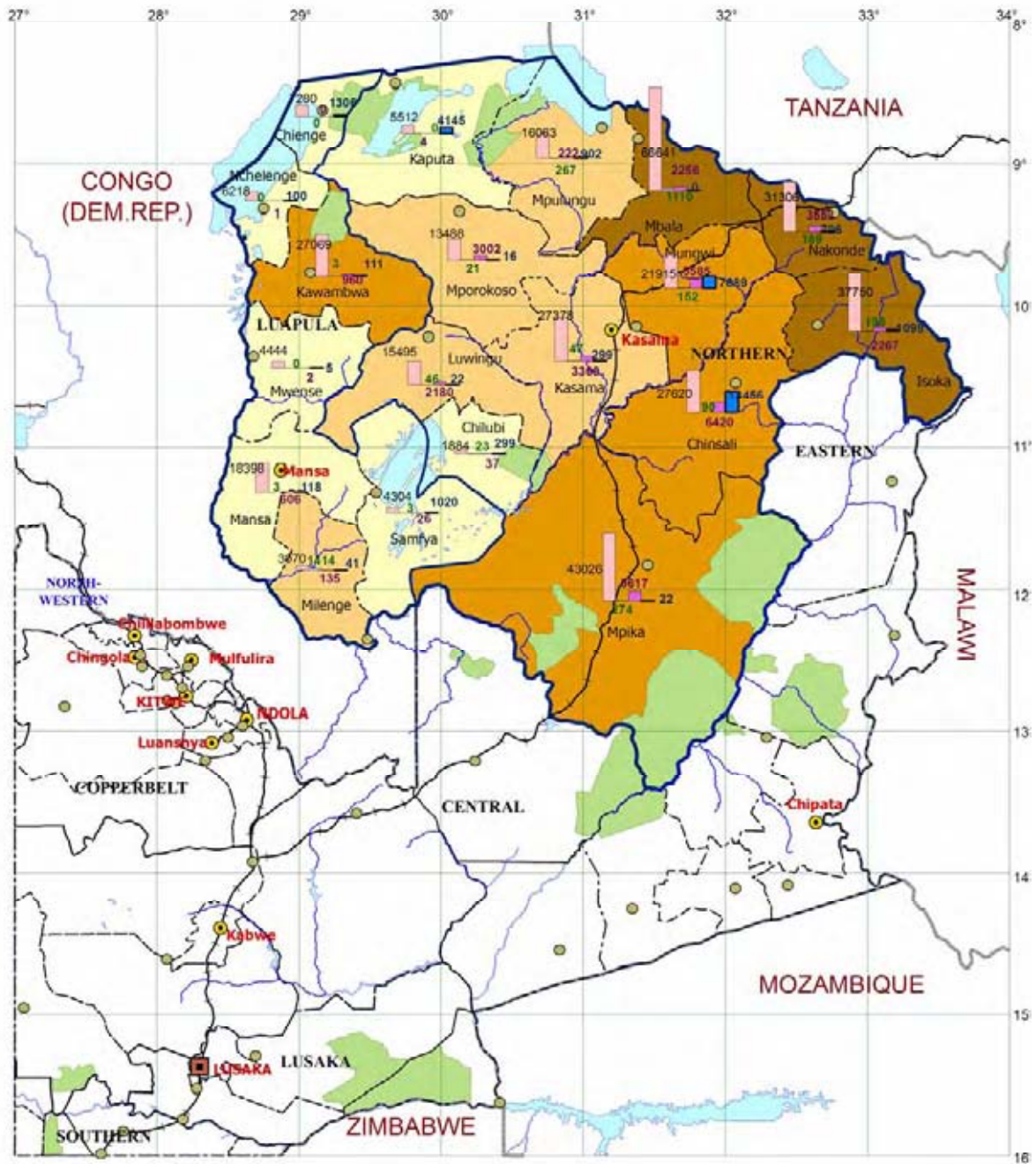
Maize

(Unit - kg/head)

- 0 - 100
- 101 - 200
- 201 - 300
- 301 - 400

District Boundary  
 Province Boundary  
 Study Area  
 National Parks  
 Water  
 Main Road  
 River  
 Coordinate Line (Lat/Long)  
 International Boundary  
 Railway  
 Capital City  
 Province Cities  
 District Cities

**Map.33 Cereal Production (2009-2010)**



**Cereal Production 2009-2010**

(Unit - ton)  
 Maize  
 Sorghum  
 Millet  
 Rice

(Unit - kg/head)  
 0 - 100  
 101 - 200  
 201 - 300  
 301 - 400

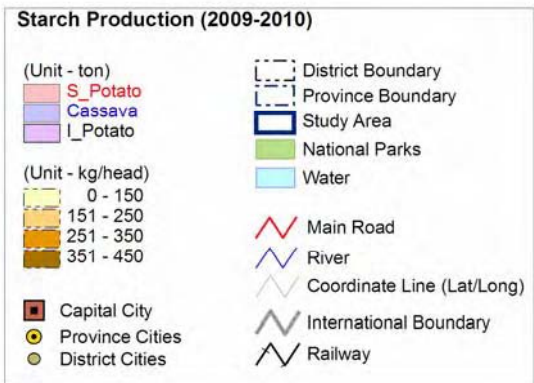
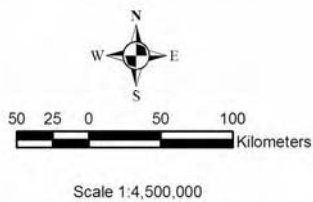
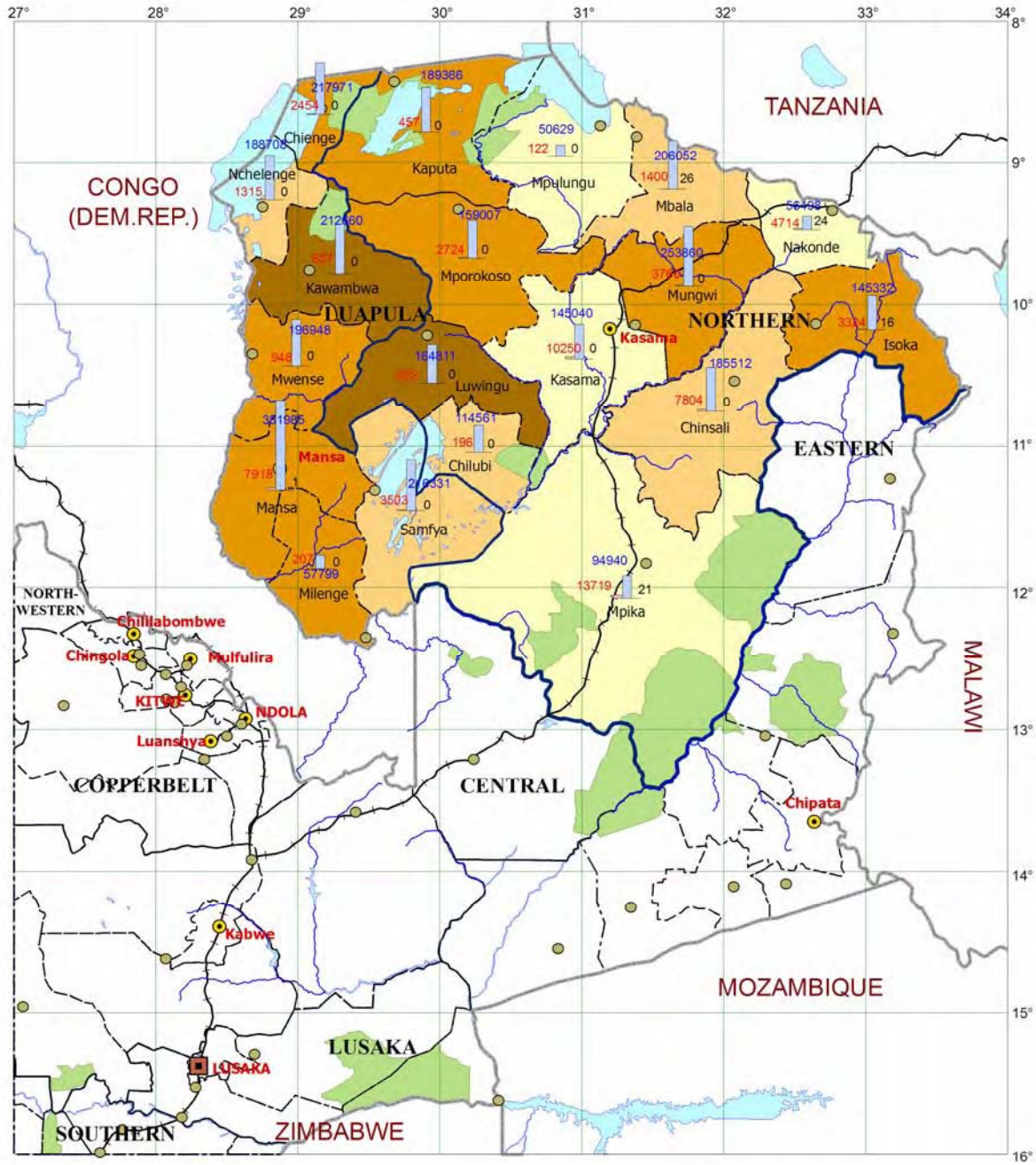
Capital City  
 Province Cities  
 District Cities

District Boundary  
 Province Boundary  
 Study Area  
 National Parks  
 Water  
 Main Road  
 River  
 Coordinate Line (Lat/Long)  
 International Boundary  
 Railway



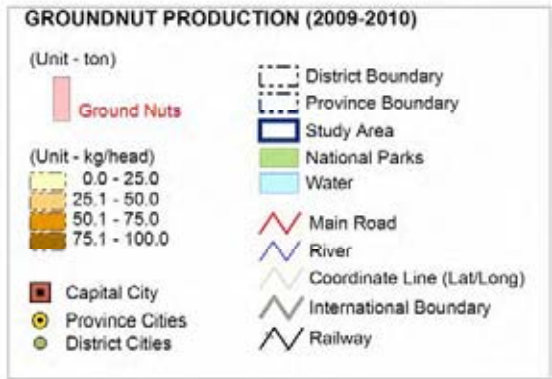
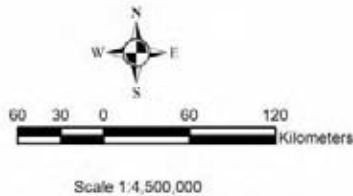
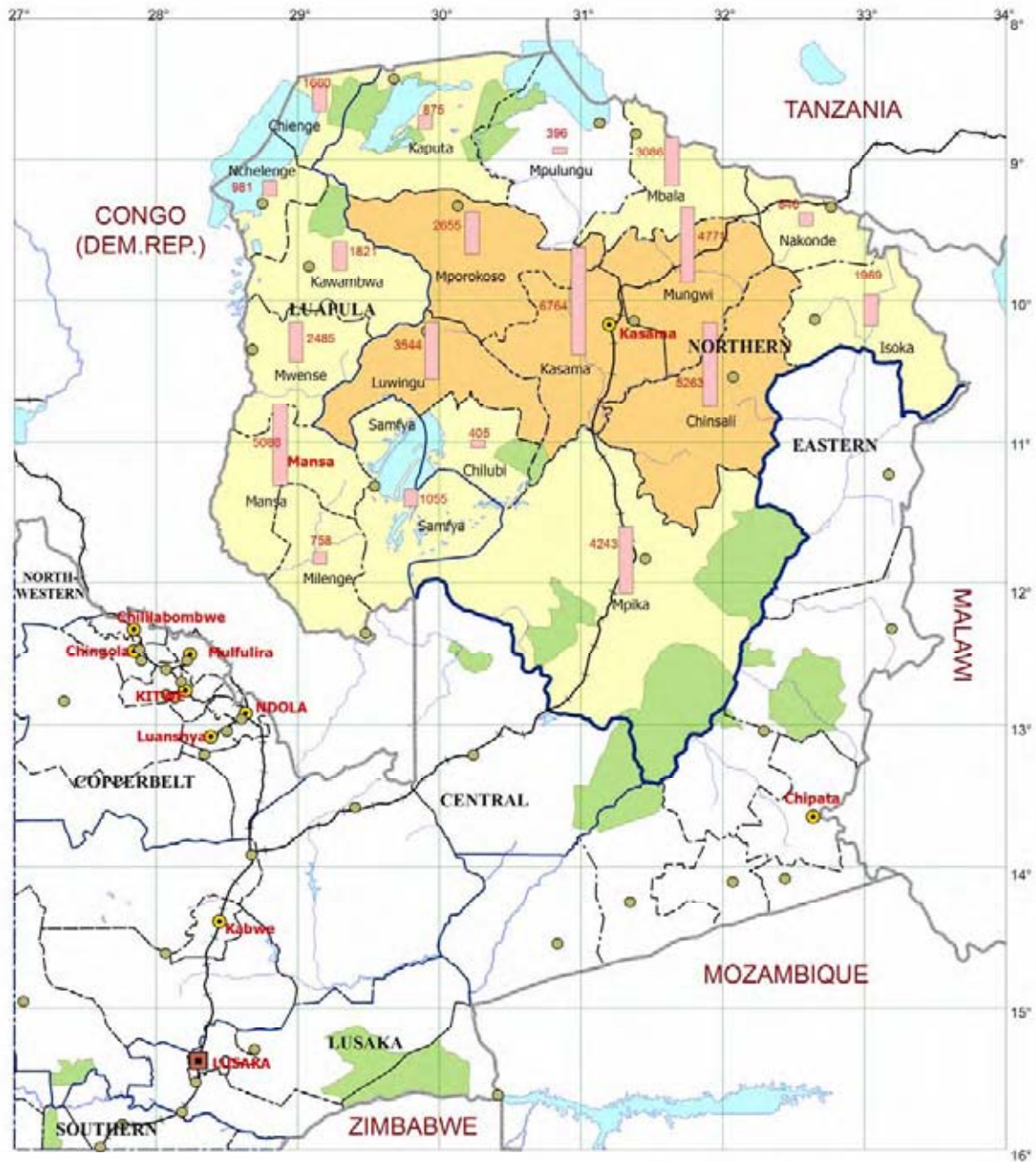


Map.35 Starch Production (2009 - 2010)

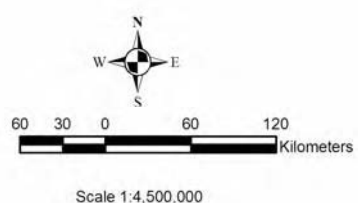




**Map.36 Groundnuts Production (2009-2010)**



**Map.37 Mixed Beand Production (2009-2010)**

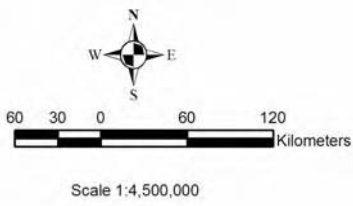
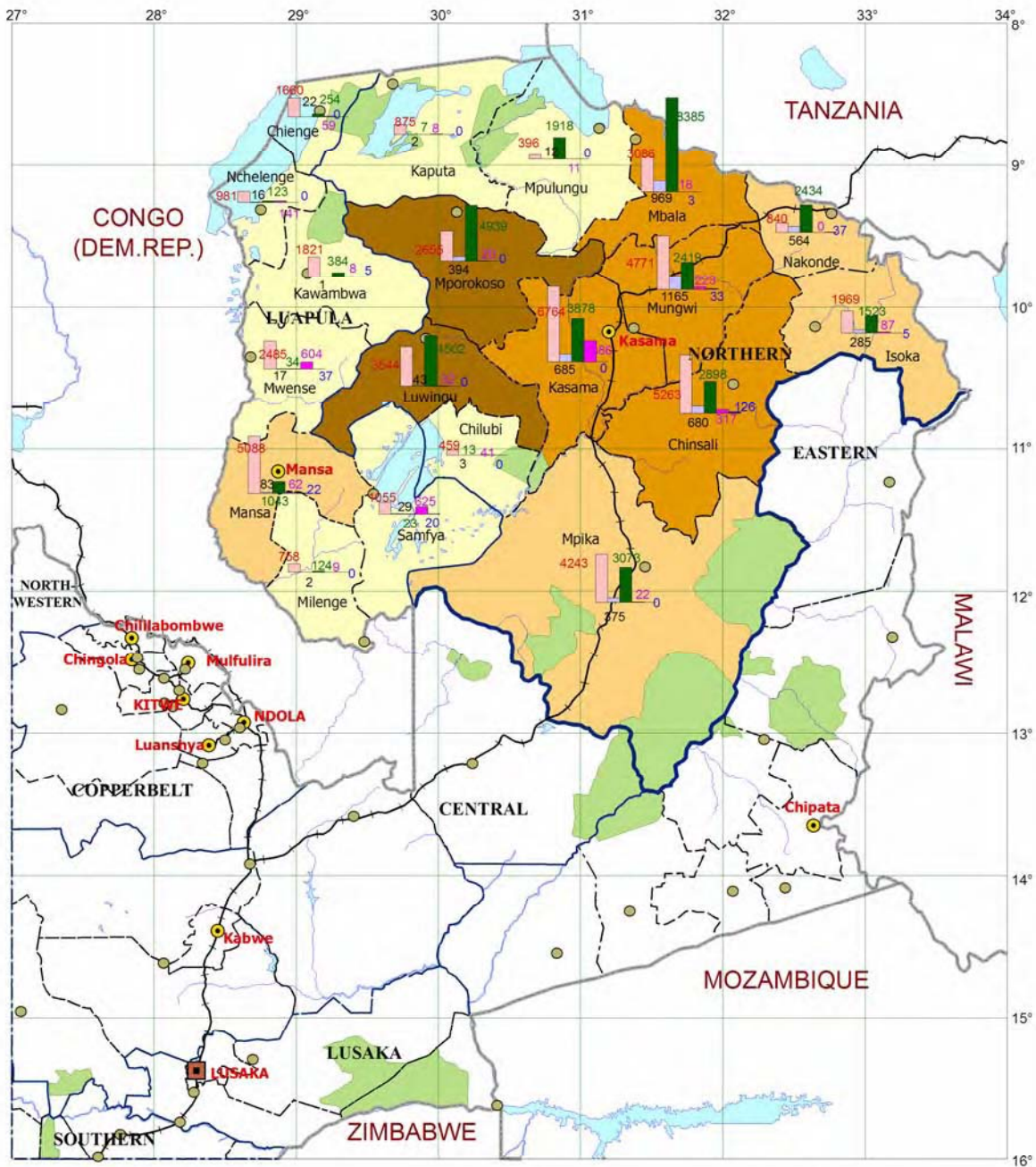


**Mixed Beans Production (2009-2010)**

(Unit - ton)	Mixed Beans	District Boundary Province Boundary Study Area National Parks Water
(Unit - kg/head)	0.0 - 25.0 25.1 - 50.0 50.1 - 75.0 75.1 - 100.0	Main Road River Coordinate Line (Lat/Long) International Boundary Railway
Capital City Province Cities District Cities		



**Map.38 Nuts and Beans Production (2009-2010)**



**Nuts and Beans Production (2009-2010)**

<b>(Unit - ton)</b>		[---] District Boundary [---] Province Boundary [---] Study Area [---] National Parks [---] Water	
[Pink]	Ground Nuts		
[Light Blue]	Soybean		
[Green]	Mixed Bean		
[Purple]	B_Nuts		
[Blue]	Cowpea		
<b>(Unit - kg/head)</b>			
[Lightest Yellow]	0.0 - 25.0	[Red Line]	Main Road
[Light Yellow]	25.1 - 50.0	[Blue Line]	River
[Yellow]	50.1 - 75.0	[Grey Line]	Coordinate Line (Lat/Long)
[Orange]	75.1 - 100.0	[Thick Grey Line]	International Boundary
[Red Square]	Capital City	[Black Line]	Railway
[Yellow Circle]	Province Cities		
[Black Circle]	District Cities		

